



# wwPDB X-ray Structure Validation Summary Report ⓘ

Nov 3, 2022 – 02:26 am GMT

PDB ID : 7ZOW  
Title : Crystal structure of Synechocystis halorhodopsin (SyHR), Cl-pumping mode, O state  
Authors : Kovalev, K.; Bukhdruker, S.; Astashkin, R.; Vaganova, S.; Gordeliy, V.  
Deposited on : 2022-04-26  
Resolution : 1.60 Å(reported)

This is a wwPDB X-ray Structure Validation Summary Report for a publicly released PDB entry.

We welcome your comments at [validation@mail.wwpdb.org](mailto:validation@mail.wwpdb.org)

A user guide is available at

<https://www.wwpdb.org/validation/2017/XrayValidationReportHelp>

with specific help available everywhere you see the ⓘ symbol.

The types of validation reports are described at

<http://www.wwpdb.org/validation/2017/FAQs#types>.

---

The following versions of software and data (see [references ⓘ](#)) were used in the production of this report:

MolProbity : 4.02b-467  
Mogul : 1.8.4, CSD as541be (2020)  
Xtriage (Phenix) : 1.13  
EDS : 2.31.2  
buster-report : 1.1.7 (2018)  
Percentile statistics : 20191225.v01 (using entries in the PDB archive December 25th 2019)  
Refmac : 5.8.0267  
CCP4 : 7.1.010 (Gargrove)  
Ideal geometry (proteins) : Engh & Huber (2001)  
Ideal geometry (DNA, RNA) : Parkinson et al. (1996)  
Validation Pipeline (wwPDB-VP) : 2.31.2

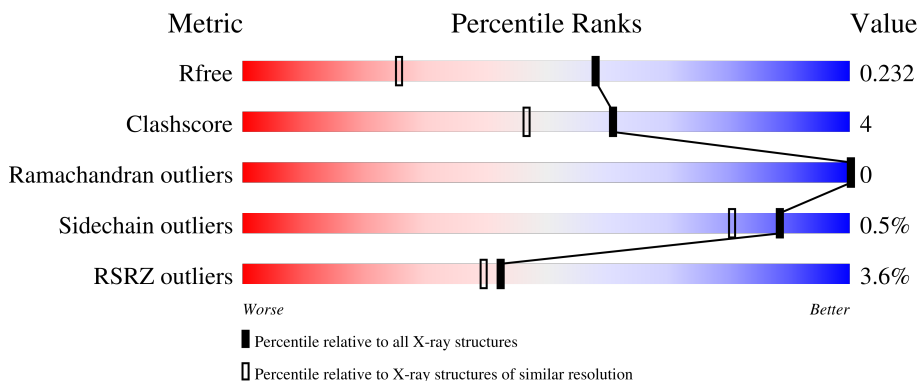
# 1 Overall quality at a glance

The following experimental techniques were used to determine the structure:

*X-RAY DIFFRACTION*

The reported resolution of this entry is 1.60 Å.

Percentile scores (ranging between 0-100) for global validation metrics of the entry are shown in the following graphic. The table shows the number of entries on which the scores are based.



Metric	Whole archive (#Entries)	Similar resolution (#Entries, resolution range(Å))
$R_{free}$	130704	3398 (1.60-1.60)
Clashscore	141614	3665 (1.60-1.60)
Ramachandran outliers	138981	3564 (1.60-1.60)
Sidechain outliers	138945	3563 (1.60-1.60)
RSRZ outliers	127900	3321 (1.60-1.60)

The table below summarises the geometric issues observed across the polymeric chains and their fit to the electron density. The red, orange, yellow and green segments of the lower bar indicate the fraction of residues that contain outliers for  $\geq 3$ , 2, 1 and 0 types of geometric quality criteria respectively. A grey segment represents the fraction of residues that are not modelled. The numeric value for each fraction is indicated below the corresponding segment, with a dot representing fractions  $\leq 5\%$ . The upper red bar (where present) indicates the fraction of residues that have poor fit to the electron density. The numeric value is given above the bar.

Mol	Chain	Length	Quality of chain
1	A	234	

## 2 Entry composition [i](#)

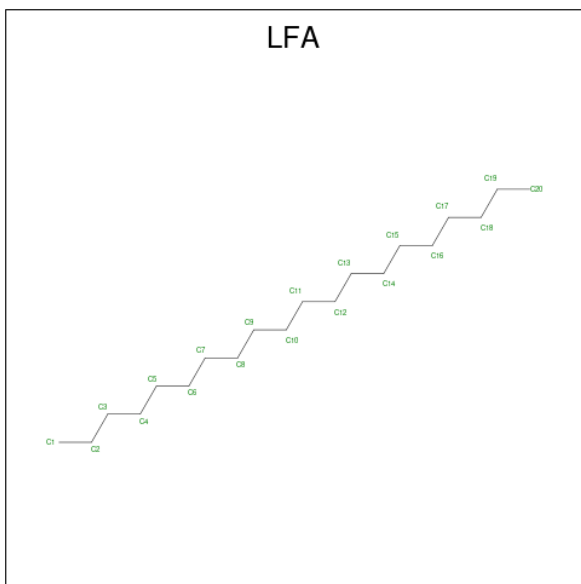
There are 5 unique types of molecules in this entry. The entry contains 2264 atoms, of which 0 are hydrogens and 0 are deuteriums.

In the tables below, the ZeroOcc column contains the number of atoms modelled with zero occupancy, the AltConf column contains the number of residues with at least one atom in alternate conformation and the Trace column contains the number of residues modelled with at most 2 atoms.

- Molecule 1 is a protein called Synechocystis halorhodopsin.

Mol	Chain	Residues	Atoms					ZeroOcc	AltConf	Trace
			Total	C	N	O	S			
1	A	225	1909	1270	311	319	9	0	16	0

- Molecule 2 is EICOSANE (three-letter code: LFA) (formula:  $C_{20}H_{42}$ ).



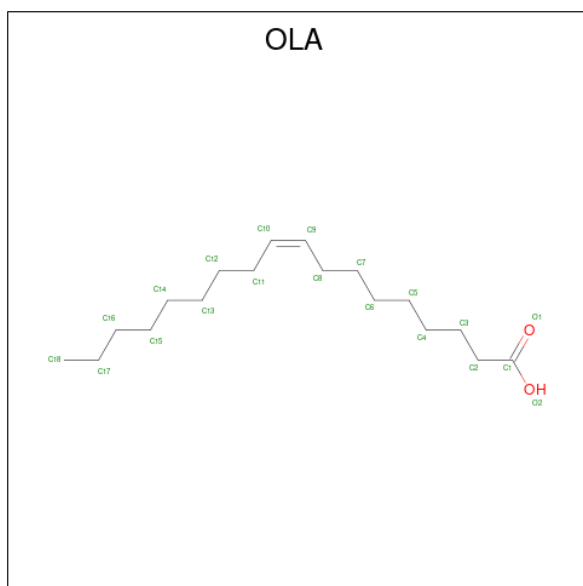
Mol	Chain	Residues	Atoms		ZeroOcc	AltConf
2	A	1	Total	C	0	0
			12	12		
2	A	1	Total	C	0	0
			13	13		
2	A	1	Total	C	0	0
			10	10		
2	A	1	Total	C	0	0
			15	15		
2	A	1	Total	C	0	0
			6	6		

*Continued on next page...*

Continued from previous page...

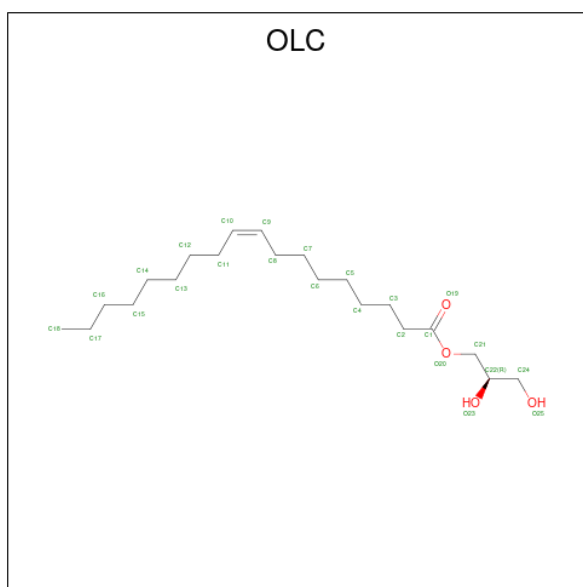
Mol	Chain	Residues	Atoms	ZeroOcc	AltConf
2	A	1	Total C 7 7	0	0
2	A	1	Total C 18 18	0	0
2	A	1	Total C 10 10	0	0
2	A	1	Total C 8 8	0	0
2	A	1	Total C 7 7	0	0
2	A	1	Total C 12 12	0	0

- Molecule 3 is OLEIC ACID (three-letter code: OLA) (formula:  $C_{18}H_{34}O_2$ ).



Mol	Chain	Residues	Atoms	ZeroOcc	AltConf
3	A	1	Total C O 15 13 2	0	0
3	A	1	Total C O 11 9 2	0	0
3	A	1	Total C O 12 10 2	0	0
3	A	1	Total C O 20 18 2	0	0

- Molecule 4 is (2R)-2,3-dihydroxypropyl (9Z)-octadec-9-enoate (three-letter code: OLC) (formula:  $C_{21}H_{40}O_4$ ).



Mol	Chain	Residues	Atoms	ZeroOcc	AltConf
4	A	1	Total C O 24 20 4	0	0
4	A	1	Total C O 15 11 4	0	0
4	A	1	Total C O 18 14 4	0	0

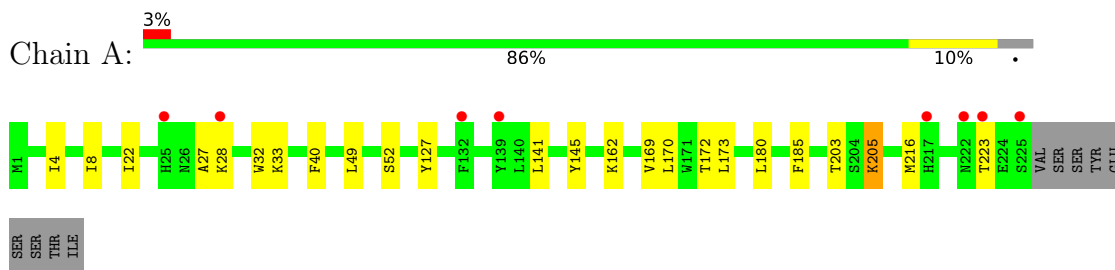
- Molecule 5 is water.

Mol	Chain	Residues	Atoms	ZeroOcc	AltConf
5	A	121	Total O 122 122	0	4

### 3 Residue-property plots [i](#)

These plots are drawn for all protein, RNA, DNA and oligosaccharide chains in the entry. The first graphic for a chain summarises the proportions of the various outlier classes displayed in the second graphic. The second graphic shows the sequence view annotated by issues in geometry and electron density. Residues are color-coded according to the number of geometric quality criteria for which they contain at least one outlier: green = 0, yellow = 1, orange = 2 and red = 3 or more. A red dot above a residue indicates a poor fit to the electron density ( $RSRZ > 2$ ). Stretches of 2 or more consecutive residues without any outlier are shown as a green connector. Residues present in the sample, but not in the model, are shown in grey.

- Molecule 1: Synechocystis halorhodopsin



## 4 Data and refinement statistics i

Property	Value	Source
Space group	P 3 2 1	Depositor
Cell constants a, b, c, $\alpha$ , $\beta$ , $\gamma$	62.41Å 62.41Å 110.08Å 90.00° 90.00° 120.00°	Depositor
Resolution (Å)	19.28 – 1.60 19.28 – 1.60	Depositor EDS
% Data completeness (in resolution range)	93.8 (19.28-1.60) 93.8 (19.28-1.60)	Depositor EDS
$R_{merge}$	(Not available)	Depositor
$R_{sym}$	(Not available)	Depositor
$\langle I/\sigma(I) \rangle$ <sup>1</sup>	1.33 (at 1.60Å)	Xtrriage
Refinement program	PHENIX 1.19.2_4158	Depositor
R, $R_{free}$	0.195 , 0.232 0.195 , 0.232	Depositor DCC
$R_{free}$ test set	1609 reflections (5.13%)	wwPDB-VP
Wilson B-factor (Å <sup>2</sup> )	18.1	Xtrriage
Anisotropy	0.042	Xtrriage
Bulk solvent $k_{sol}$ (e/Å <sup>3</sup> ), $B_{sol}$ (Å <sup>2</sup> )	(Not available) , (Not available)	EDS
L-test for twinning <sup>2</sup>	$\langle  L  \rangle = 0.49$ , $\langle L^2 \rangle = 0.33$	Xtrriage
Estimated twinning fraction	0.047 for -h,-k,l	Xtrriage
$F_o, F_c$ correlation	0.95	EDS
Total number of atoms	2264	wwPDB-VP
Average B, all atoms (Å <sup>2</sup> )	22.0	wwPDB-VP

Xtrriage's analysis on translational NCS is as follows: *The largest off-origin peak in the Patterson function is 9.78% of the height of the origin peak. No significant pseudotranslation is detected.*

<sup>1</sup>Intensities estimated from amplitudes.

<sup>2</sup>Theoretical values of  $\langle |L| \rangle$ ,  $\langle L^2 \rangle$  for acentric reflections are 0.5, 0.333 respectively for untwinned datasets, and 0.375, 0.2 for perfectly twinned datasets.

## 5 Model quality [i](#)

### 5.1 Standard geometry [i](#)

Bond lengths and bond angles in the following residue types are not validated in this section: OLA, LYR, LFA, FME, OLC

The Z score for a bond length (or angle) is the number of standard deviations the observed value is removed from the expected value. A bond length (or angle) with  $|Z| > 5$  is considered an outlier worth inspection. RMSZ is the root-mean-square of all Z scores of the bond lengths (or angles).

Mol	Chain	Bond lengths		Bond angles	
		RMSZ	# $ Z  > 5$	RMSZ	# $ Z  > 5$
1	A	3.69	2/1924 (0.1%)	0.72	4/2617 (0.2%)

All (2) bond length outliers are listed below:

Mol	Chain	Res	Type	Atoms	Z	Observed(Å)	Ideal(Å)
1	A	28[A]	LYS	CB-CG	113.82	4.59	1.52
1	A	28[B]	LYS	CB-CG	113.82	4.59	1.52

All (4) bond angle outliers are listed below:

Mol	Chain	Res	Type	Atoms	Z	Observed(°)	Ideal(°)
1	A	28[A]	LYS	CA-CB-CG	-14.82	80.80	113.40
1	A	28[B]	LYS	CA-CB-CG	-14.82	80.80	113.40
1	A	28[A]	LYS	CB-CG-CD	5.92	126.98	111.60
1	A	28[B]	LYS	CB-CG-CD	5.92	126.98	111.60

There are no chirality outliers.

There are no planarity outliers.

### 5.2 Too-close contacts [i](#)

In the following table, the Non-H and H(model) columns list the number of non-hydrogen atoms and hydrogen atoms in the chain respectively. The H(added) column lists the number of hydrogen atoms added and optimized by MolProbity. The Clashes column lists the number of clashes within the asymmetric unit, whereas Symm-Clashes lists symmetry-related clashes.

Mol	Chain	Non-H	H(model)	H(added)	Clashes	Symm-Clashes
1	A	1909	0	1948	18	0
2	A	118	0	219	10	0

*Continued on next page...*



Continued from previous page...

Mol	Chain	Non-H	H(model)	H(added)	Clashes	Symm-Clashes
3	A	58	0	82	0	0
4	A	57	0	77	3	0
5	A	122	0	0	0	1
All	All	2264	0	2326	20	1

The all-atom clashscore is defined as the number of clashes found per 1000 atoms (including hydrogen atoms). The all-atom clashscore for this structure is 4.

The worst 5 of 20 close contacts within the same asymmetric unit are listed below, sorted by their clash magnitude.

Atom-1	Atom-2	Interatomic distance (Å)	Clash overlap (Å)
1:A:180:LEU:HD23	2:A:1002:LFA:H51	1.78	0.64
1:A:32:TRP:CZ2	1:A:216[B]:MET:HG2	2.38	0.59
4:A:1011:OLC:H3	4:A:1011:OLC:H7	1.86	0.57
1:A:173:LEU:HD22	2:A:1001:LFA:H91	1.88	0.56
1:A:22:ILE:HG23	2:A:1004:LFA:H12	1.88	0.56

All (1) symmetry-related close contacts are listed below. The label for Atom-2 includes the symmetry operator and encoded unit-cell translations to be applied.

Atom-1	Atom-2	Interatomic distance (Å)	Clash overlap (Å)
5:A:1172:HOH:O	5:A:1200:HOH:O[2_445]	2.18	0.02

## 5.3 Torsion angles [i](#)

### 5.3.1 Protein backbone [i](#)

In the following table, the Percentiles column shows the percent Ramachandran outliers of the chain as a percentile score with respect to all X-ray entries followed by that with respect to entries of similar resolution.

The Analysed column shows the number of residues for which the backbone conformation was analysed, and the total number of residues.

Mol	Chain	Analysed	Favoured	Allowed	Outliers	Percentiles
1	A	238/234 (102%)	235 (99%)	3 (1%)	0	<b>100</b> <b>100</b>

There are no Ramachandran outliers to report.

### 5.3.2 Protein sidechains [i](#)

In the following table, the Percentiles column shows the percent sidechain outliers of the chain as a percentile score with respect to all X-ray entries followed by that with respect to entries of similar resolution.

The Analysed column shows the number of residues for which the sidechain conformation was analysed, and the total number of residues.

Mol	Chain	Analysed	Rotameric	Outliers	Percentiles
1	A	197/195 (101%)	196 (100%)	1 (0%)	<a href="#">88</a> <a href="#">80</a>

All (1) residues with a non-rotameric sidechain are listed below:

Mol	Chain	Res	Type
1	A	223	THR

Sometimes sidechains can be flipped to improve hydrogen bonding and reduce clashes. There are no such sidechains identified.

### 5.3.3 RNA [i](#)

There are no RNA molecules in this entry.

## 5.4 Non-standard residues in protein, DNA, RNA chains [i](#)

2 non-standard protein/DNA/RNA residues are modelled in this entry.

In the following table, the Counts columns list the number of bonds (or angles) for which Mogul statistics could be retrieved, the number of bonds (or angles) that are observed in the model and the number of bonds (or angles) that are defined in the Chemical Component Dictionary. The Link column lists molecule types, if any, to which the group is linked. The Z score for a bond length (or angle) is the number of standard deviations the observed value is removed from the expected value. A bond length (or angle) with  $|Z| > 2$  is considered an outlier worth inspection. RMSZ is the root-mean-square of all Z scores of the bond lengths (or angles).

Mol	Type	Chain	Res	Link	Bond lengths			Bond angles		
					Counts	RMSZ	$\# Z  > 2$	Counts	RMSZ	$\# Z  > 2$
1	LYR	A	205	1	27,29,30	0.67	0	30,37,39	1.01	<b>1 (3%)</b>
1	FME	A	1	1	8,9,10	0.99	0	7,9,11	0.81	0

In the following table, the Chirals column lists the number of chiral outliers, the number of chiral centers analysed, the number of these observed in the model and the number defined in the Chemical Component Dictionary. Similar counts are reported in the Torsion and Rings columns.

'-' means no outliers of that kind were identified.

Mol	Type	Chain	Res	Link	Chirals	Torsions	Rings
1	LYR	A	205	1	-	7/22/40/42	0/1/1/1
1	FME	A	1	1	-	0/7/9/11	-

There are no bond length outliers.

All (1) bond angle outliers are listed below:

Mol	Chain	Res	Type	Atoms	Z	Observed(°)	Ideal(°)
1	A	205	LYR	C4-C3-C5	-2.42	114.27	118.08

There are no chirality outliers.

5 of 7 torsion outliers are listed below:

Mol	Chain	Res	Type	Atoms
1	A	205	LYR	C8-C80-C9-C10
1	A	205	LYR	CG-CD-CE-NZ
1	A	205	LYR	C9-C10-C11-C17
1	A	205	LYR	CD-CE-NZ-C1
1	A	205	LYR	C1-C2-C3-C4

There are no ring outliers.

1 monomer is involved in 2 short contacts:

Mol	Chain	Res	Type	Clashes	Symm-Clashes
1	A	205	LYR	2	0

## 5.5 Carbohydrates [i](#)

There are no monosaccharides in this entry.

## 5.6 Ligand geometry [i](#)

18 ligands are modelled in this entry.

In the following table, the Counts columns list the number of bonds (or angles) for which Mogul statistics could be retrieved, the number of bonds (or angles) that are observed in the model and the number of bonds (or angles) that are defined in the Chemical Component Dictionary. The Link column lists molecule types, if any, to which the group is linked. The Z score for a bond length (or angle) is the number of standard deviations the observed value is removed from the

expected value. A bond length (or angle) with  $|Z| > 2$  is considered an outlier worth inspection. RMSZ is the root-mean-square of all Z scores of the bond lengths (or angles).

Mol	Type	Chain	Res	Link	Bond lengths			Bond angles		
					Counts	RMSZ	# Z  > 2	Counts	RMSZ	# Z  > 2
2	LFA	A	1005	-	5,5,19	0.12	0	4,4,18	0.08	0
2	LFA	A	1017	-	6,6,19	0.10	0	5,5,18	0.24	0
2	LFA	A	1018	-	11,11,19	0.09	0	10,10,18	0.09	0
3	OLA	A	1007	-	14,14,19	0.61	0	14,14,19	0.56	0
2	LFA	A	1015	-	9,9,19	0.12	0	8,8,18	0.15	0
2	LFA	A	1004	-	14,14,19	0.08	0	13,13,18	0.10	0
2	LFA	A	1006	-	6,6,19	0.10	0	5,5,18	0.13	0
3	OLA	A	1014	-	19,19,19	0.53	0	19,19,19	0.49	0
2	LFA	A	1003	-	9,9,19	0.10	0	8,8,18	0.10	0
4	OLC	A	1011	-	14,14,24	0.26	0	15,15,25	0.26	0
3	OLA	A	1008	-	10,10,19	0.70	0	10,10,19	0.66	0
4	OLC	A	1013	-	17,17,24	0.25	0	18,18,25	0.36	0
2	LFA	A	1002	-	12,12,19	0.09	0	11,11,18	0.20	0
2	LFA	A	1016	-	7,7,19	0.13	0	6,6,18	0.13	0
2	LFA	A	1012	-	17,17,19	0.09	0	16,16,18	0.18	0
3	OLA	A	1009	-	11,11,19	0.67	0	11,11,19	0.61	0
2	LFA	A	1001	-	11,11,19	0.10	0	10,10,18	0.15	0
4	OLC	A	1010	-	23,23,24	0.28	0	24,24,25	0.35	0

In the following table, the Chirals column lists the number of chiral outliers, the number of chiral centers analysed, the number of these observed in the model and the number defined in the Chemical Component Dictionary. Similar counts are reported in the Torsion and Rings columns. '-' means no outliers of that kind were identified.

Mol	Type	Chain	Res	Link	Chirals	Torsions	Rings
2	LFA	A	1005	-	-	0/3/3/17	-
2	LFA	A	1017	-	-	0/4/4/17	-
2	LFA	A	1018	-	-	1/9/9/17	-
3	OLA	A	1007	-	-	4/12/12/17	-
2	LFA	A	1015	-	-	0/7/7/17	-
2	LFA	A	1004	-	-	3/12/12/17	-
2	LFA	A	1006	-	-	0/4/4/17	-
3	OLA	A	1014	-	-	4/17/17/17	-
2	LFA	A	1003	-	-	0/7/7/17	-
4	OLC	A	1011	-	-	1/14/14/24	-
3	OLA	A	1008	-	-	2/8/8/17	-
4	OLC	A	1013	-	-	3/17/17/24	-
2	LFA	A	1002	-	-	2/10/10/17	-

*Continued on next page...*

Continued from previous page...

Mol	Type	Chain	Res	Link	Chirals	Torsions	Rings
2	LFA	A	1016	-	-	1/5/5/17	-
2	LFA	A	1012	-	-	3/15/15/17	-
3	OLA	A	1009	-	-	3/9/9/17	-
2	LFA	A	1001	-	-	2/9/9/17	-
4	OLC	A	1010	-	-	4/23/23/24	-

There are no bond length outliers.

There are no bond angle outliers.

There are no chirality outliers.

5 of 33 torsion outliers are listed below:

Mol	Chain	Res	Type	Atoms
4	A	1010	OLC	C2-C1-O20-C21
4	A	1010	OLC	O19-C1-O20-C21
2	A	1012	LFA	C3-C4-C5-C6
4	A	1013	OLC	C21-C22-C24-O25
2	A	1001	LFA	C9-C10-C11-C12

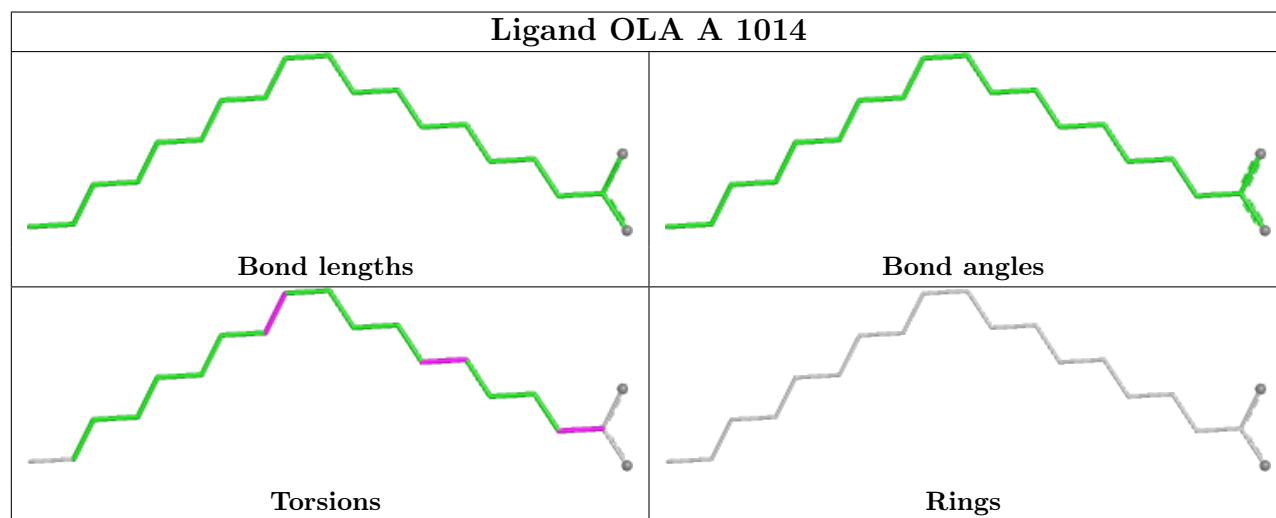
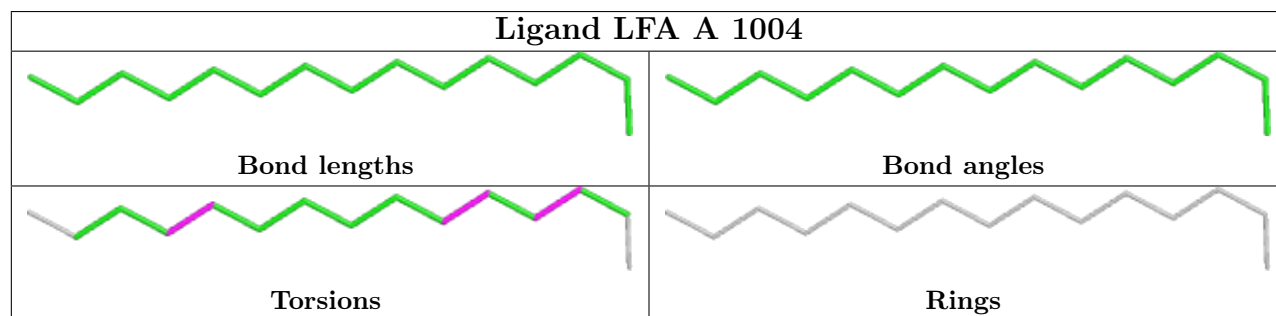
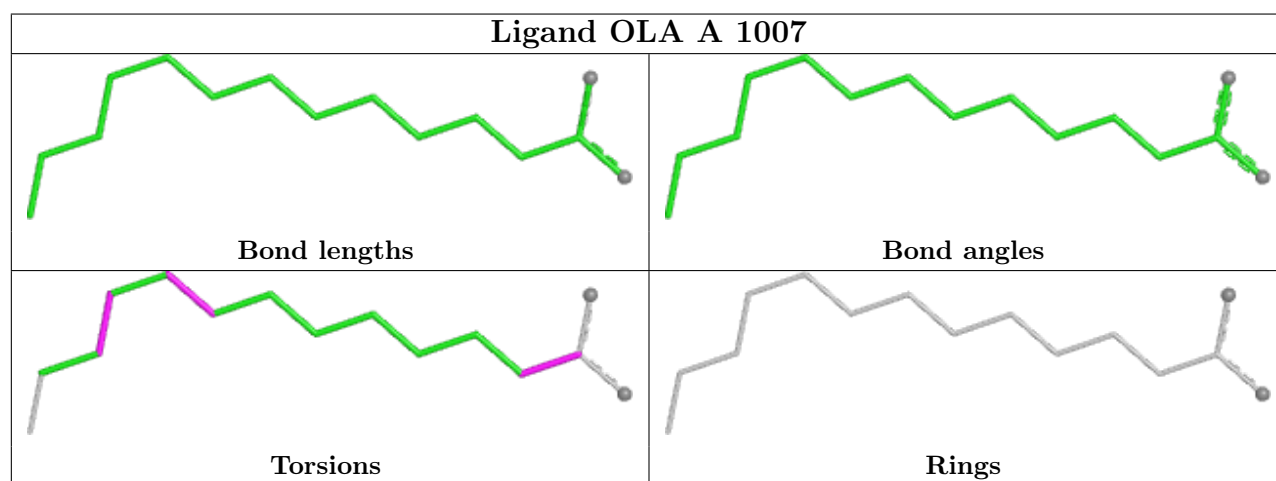
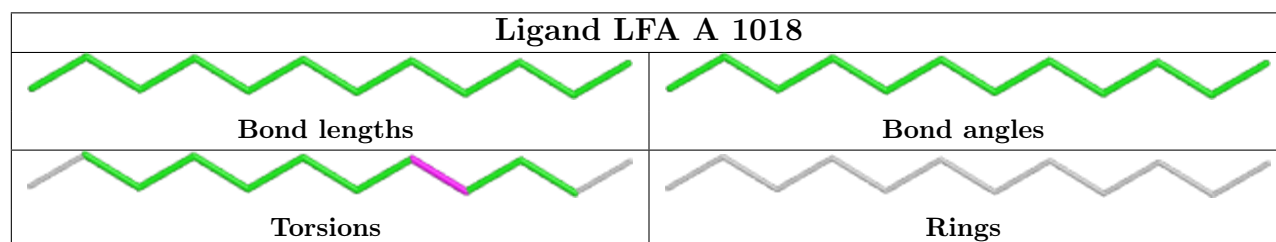
There are no ring outliers.

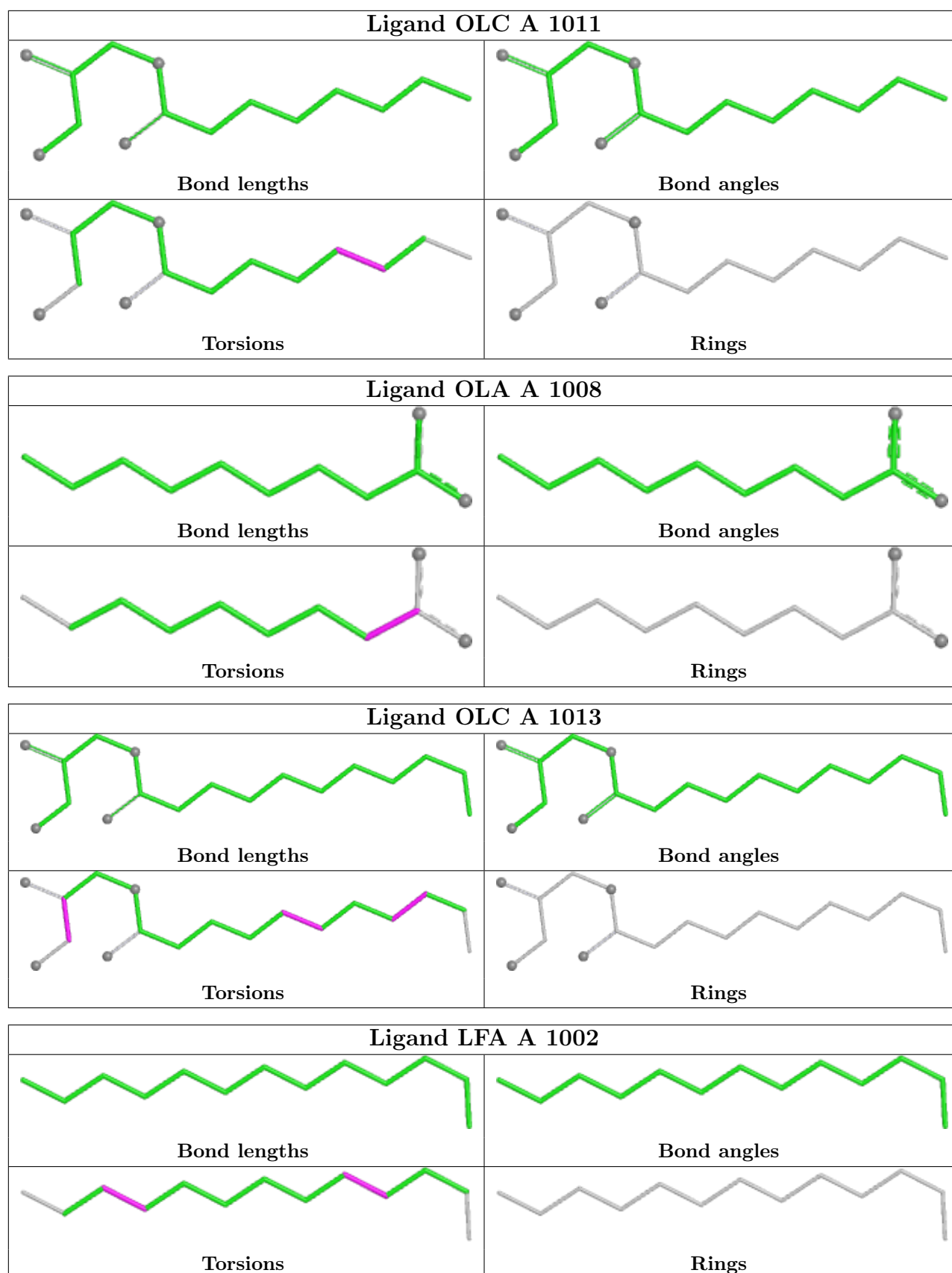
7 monomers are involved in 13 short contacts:

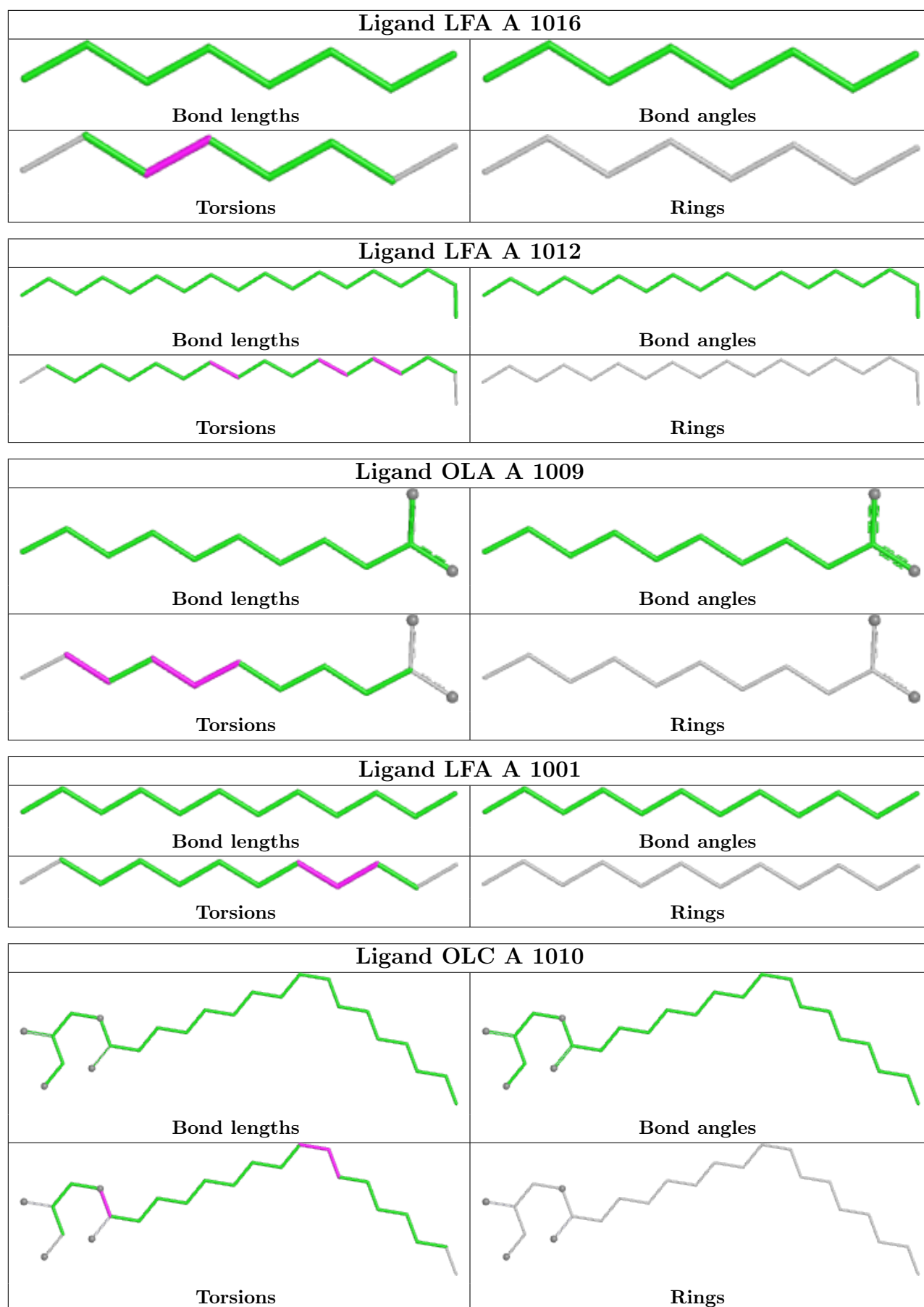
Mol	Chain	Res	Type	Clashes	Symm-Clashes
2	A	1004	LFA	3	0
2	A	1003	LFA	2	0
4	A	1011	OLC	1	0
2	A	1002	LFA	2	0
2	A	1012	LFA	2	0
2	A	1001	LFA	1	0
4	A	1010	OLC	2	0

The following is a two-dimensional graphical depiction of Mogul quality analysis of bond lengths, bond angles, torsion angles, and ring geometry for all instances of the Ligand of Interest. In addition, ligands with molecular weight > 250 and outliers as shown on the validation Tables will also be included. For torsion angles, if less than 5% of the Mogul distribution of torsion angles is within 10 degrees of the torsion angle in question, then that torsion angle is considered an outlier. Any bond that is central to one or more torsion angles identified as an outlier by Mogul will be highlighted in the graph. For rings, the root-mean-square deviation (RMSD) between the ring in question and similar rings identified by Mogul is calculated over all ring torsion angles. If the average RMSD is greater than 60 degrees and the minimal RMSD between the ring in question and any Mogul-identified rings is also greater than 60 degrees, then that ring is considered an outlier.

The outliers are highlighted in purple. The color gray indicates Mogul did not find sufficient equivalents in the CSD to analyse the geometry.









## 5.7 Other polymers

There are no such residues in this entry.

## 5.8 Polymer linkage issues

There are no chain breaks in this entry.

## 6 Fit of model and data [i](#)

### 6.1 Protein, DNA and RNA chains [i](#)

In the following table, the column labelled '#RSRZ > 2' contains the number (and percentage) of RSRZ outliers, followed by percent RSRZ outliers for the chain as percentile scores relative to all X-ray entries and entries of similar resolution. The OWAB column contains the minimum, median, 95<sup>th</sup> percentile and maximum values of the occupancy-weighted average B-factor per residue. The column labelled 'Q < 0.9' lists the number of (and percentage) of residues with an average occupancy less than 0.9.

Mol	Chain	Analysed	<RSRZ>	#RSRZ>2	OWAB(Å <sup>2</sup> )	Q<0.9
1	A	223/234 (95%)	0.01	8 (3%) 42 40	13, 17, 33, 72	2 (0%)

The worst 5 of 8 RSRZ outliers are listed below:

Mol	Chain	Res	Type	RSRZ
1	A	223	THR	6.2
1	A	222	ASN	4.3
1	A	225	SER	3.2
1	A	139	TYR	3.0
1	A	28[A]	LYS	2.6

### 6.2 Non-standard residues in protein, DNA, RNA chains [i](#)

In the following table, the Atoms column lists the number of modelled atoms in the group and the number defined in the chemical component dictionary. The B-factors column lists the minimum, median, 95<sup>th</sup> percentile and maximum values of B factors of atoms in the group. The column labelled 'Q < 0.9' lists the number of atoms with occupancy less than 0.9.

Mol	Type	Chain	Res	Atoms	RSCC	RSR	B-factors(Å <sup>2</sup> )	Q<0.9
1	LYR	A	205	29/30	0.92	0.11	11,14,20,21	0
1	FME	A	1	10/11	0.95	0.10	21,24,33,35	0

### 6.3 Carbohydrates [i](#)

There are no monosaccharides in this entry.

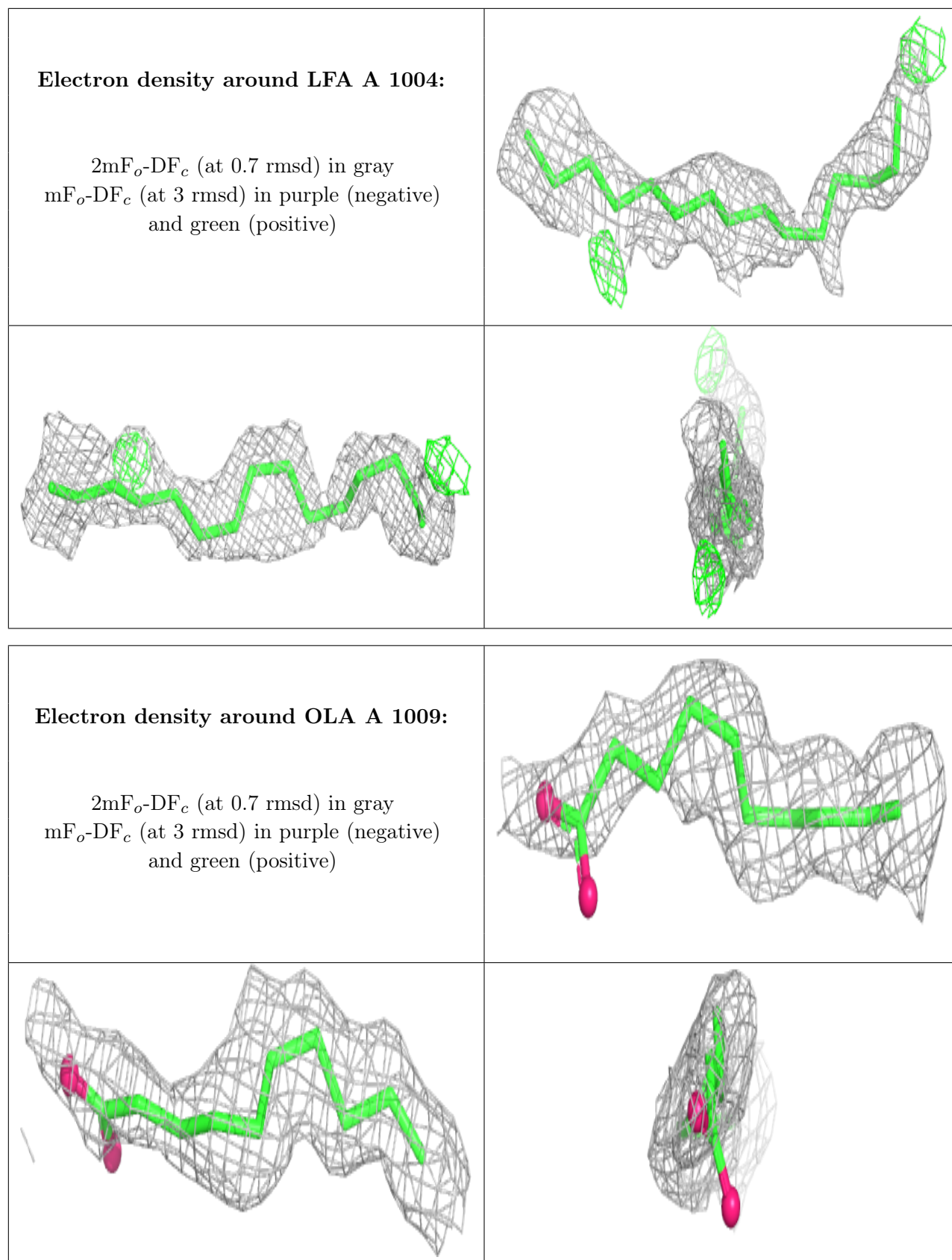
### 6.4 Ligands [i](#)

In the following table, the Atoms column lists the number of modelled atoms in the group and the number defined in the chemical component dictionary. The B-factors column lists the minimum,

median, 95<sup>th</sup> percentile and maximum values of B factors of atoms in the group. The column labelled 'Q< 0.9' lists the number of atoms with occupancy less than 0.9.

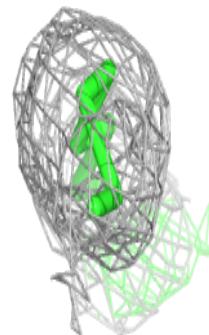
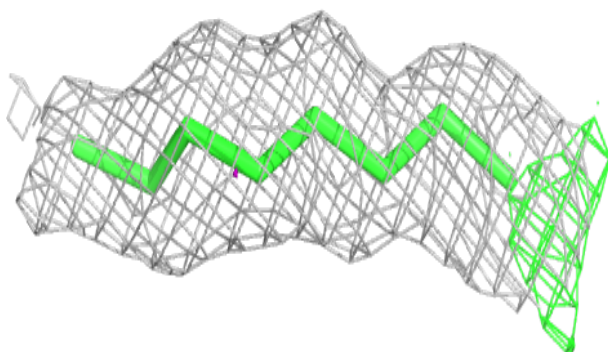
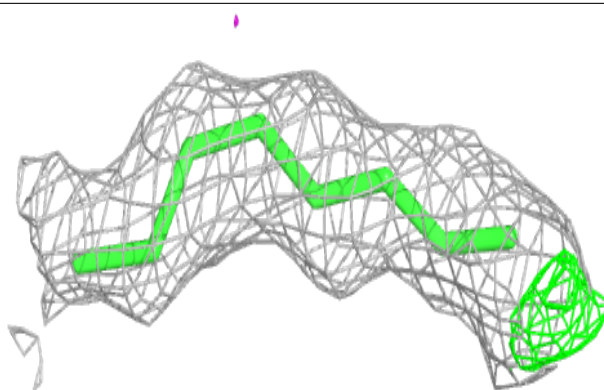
Mol	Type	Chain	Res	Atoms	RSCC	RSR	B-factors(Å <sup>2</sup> )	Q<0.9
2	LFA	A	1005	6/20	0.48	0.26	35,41,50,51	0
2	LFA	A	1015	10/20	0.63	0.14	26,33,42,46	0
2	LFA	A	1004	15/20	0.68	0.16	34,40,50,51	0
3	OLA	A	1009	12/20	0.71	0.22	29,39,62,91	0
2	LFA	A	1006	7/20	0.74	0.15	32,39,61,65	0
2	LFA	A	1003	10/20	0.75	0.17	27,36,42,45	0
2	LFA	A	1017	7/20	0.78	0.10	25,29,37,40	0
2	LFA	A	1016	8/20	0.78	0.11	27,33,41,43	0
4	OLC	A	1011	15/25	0.78	0.16	37,46,58,59	0
4	OLC	A	1010	24/25	0.79	0.15	23,35,56,59	0
3	OLA	A	1014	20/20	0.79	0.15	28,41,51,55	0
3	OLA	A	1007	15/20	0.80	0.17	17,30,64,69	0
2	LFA	A	1002	13/20	0.82	0.12	33,39,54,59	0
2	LFA	A	1012	18/20	0.83	0.17	22,33,43,47	0
3	OLA	A	1008	11/20	0.83	0.12	21,26,52,54	0
4	OLC	A	1013	18/25	0.84	0.15	27,40,53,58	0
2	LFA	A	1018	12/20	0.86	0.10	30,40,48,51	0
2	LFA	A	1001	12/20	0.87	0.12	26,34,39,43	0

The following is a graphical depiction of the model fit to experimental electron density of all instances of the Ligand of Interest. In addition, ligands with molecular weight > 250 and outliers as shown on the geometry validation Tables will also be included. Each fit is shown from different orientation to approximate a three-dimensional view.

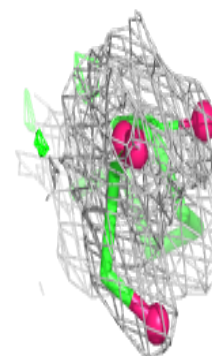
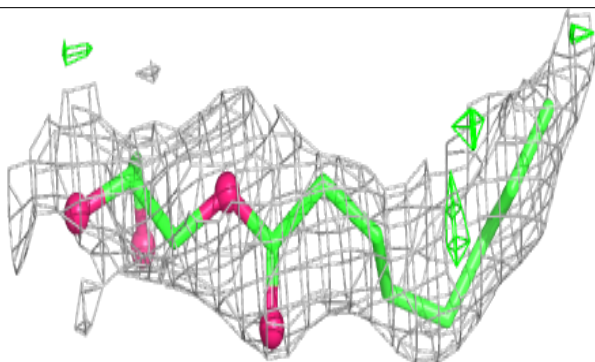
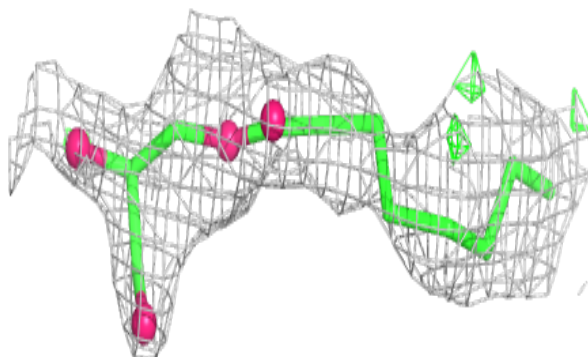


**Electron density around LFA A 1016:**

$2mF_o-DF_c$  (at 0.7 rmsd) in gray  
 $mF_o-DF_c$  (at 3 rmsd) in purple (negative)  
and green (positive)

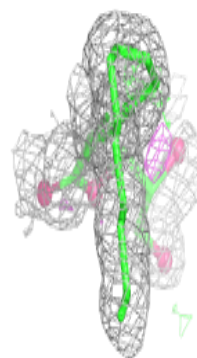
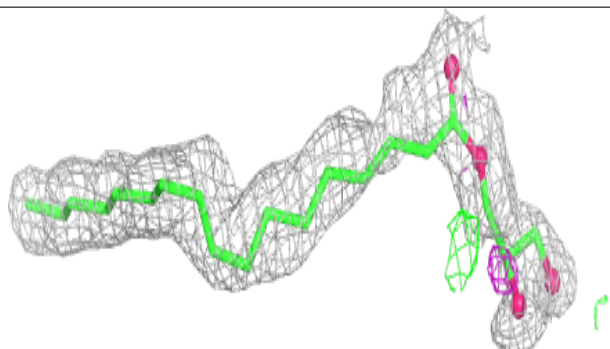
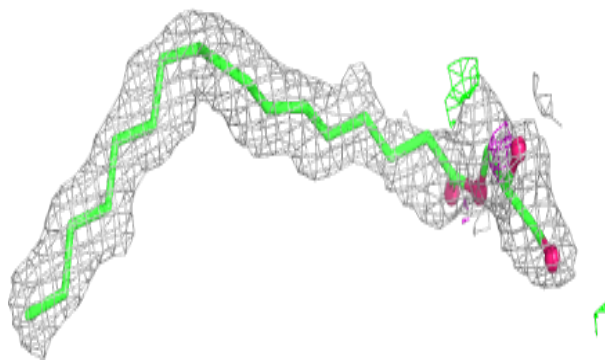
**Electron density around OLC A 1011:**

$2mF_o-DF_c$  (at 0.7 rmsd) in gray  
 $mF_o-DF_c$  (at 3 rmsd) in purple (negative)  
and green (positive)

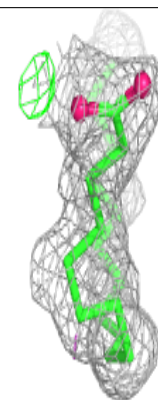
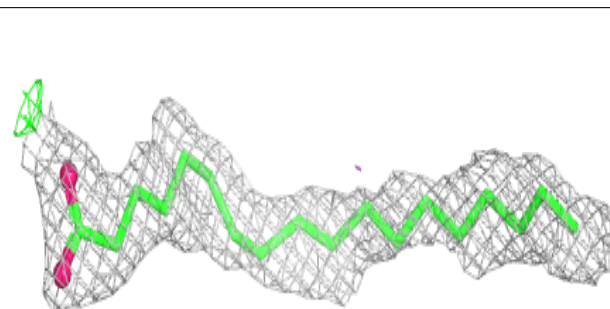
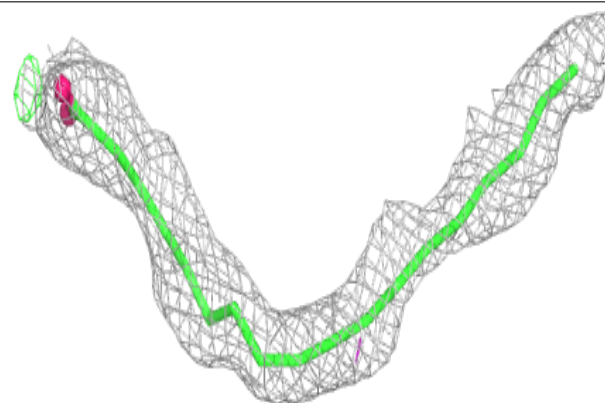


**Electron density around OLC A 1010:**

$2mF_o-DF_c$  (at 0.7 rmsd) in gray  
 $mF_o-DF_c$  (at 3 rmsd) in purple (negative)  
and green (positive)

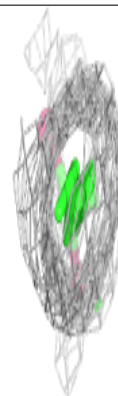
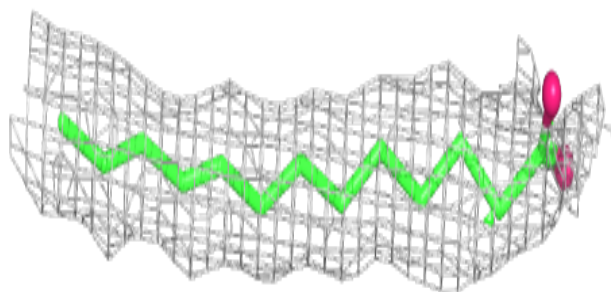
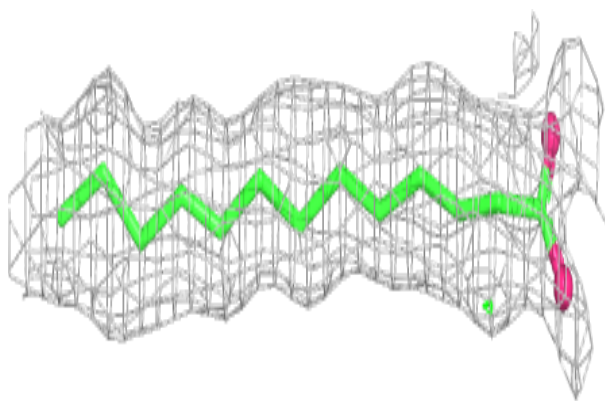
**Electron density around OLA A 1014:**

$2mF_o-DF_c$  (at 0.7 rmsd) in gray  
 $mF_o-DF_c$  (at 3 rmsd) in purple (negative)  
and green (positive)

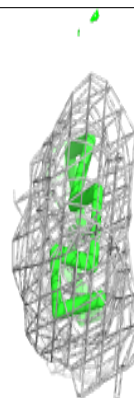
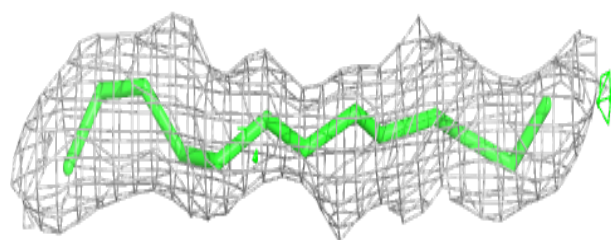
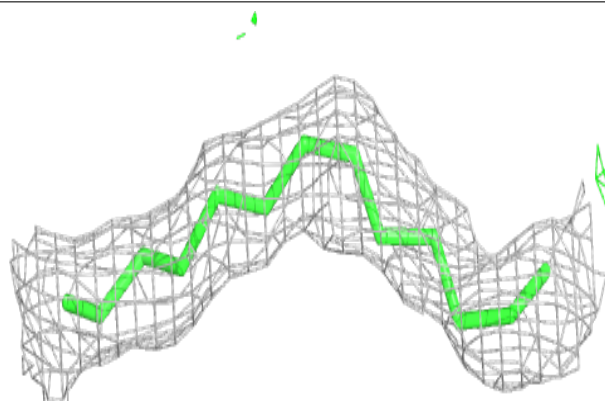


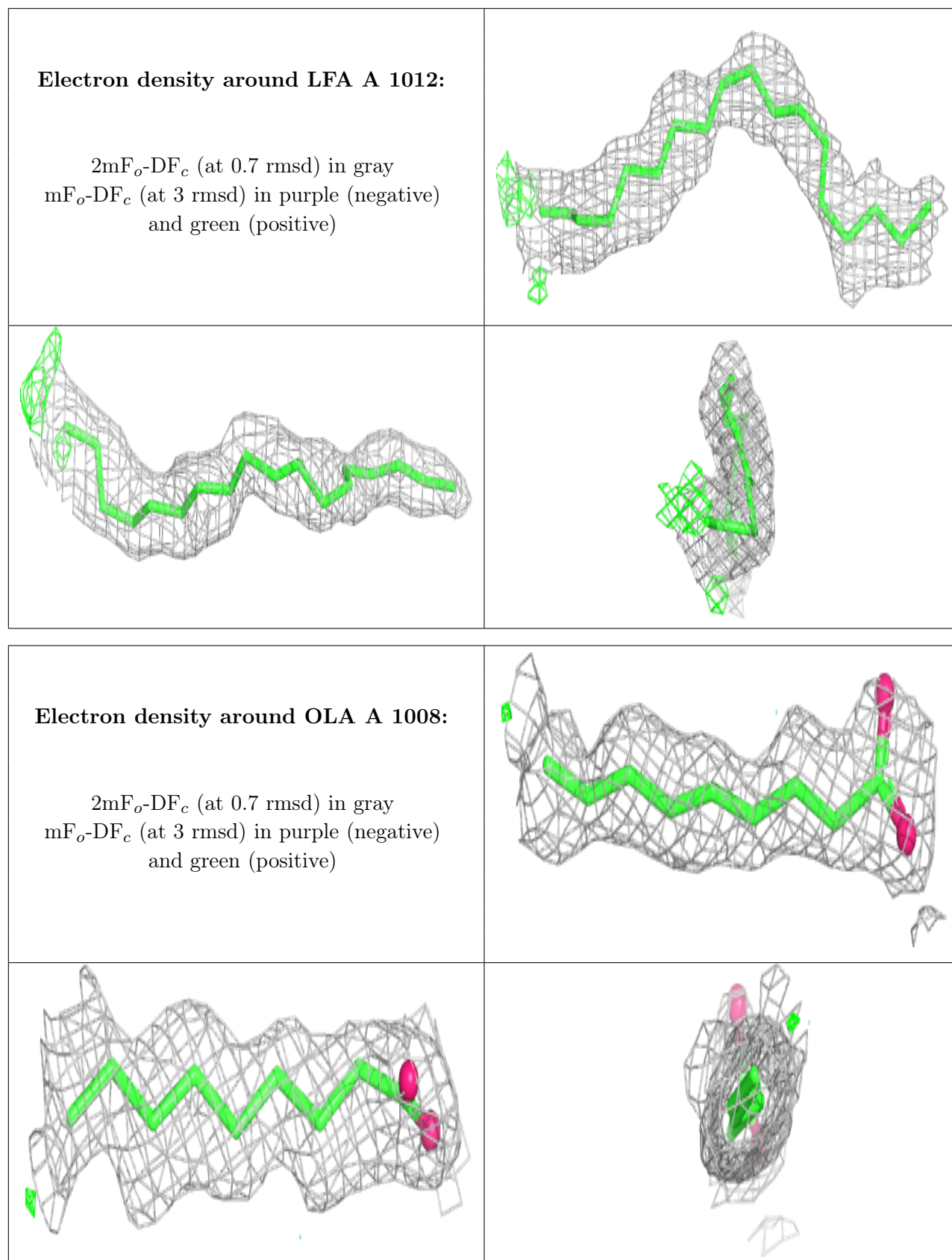
**Electron density around OLA A 1007:**

$2mF_o-DF_c$  (at 0.7 rmsd) in gray  
 $mF_o-DF_c$  (at 3 rmsd) in purple (negative)  
and green (positive)

**Electron density around LFA A 1002:**

$2mF_o-DF_c$  (at 0.7 rmsd) in gray  
 $mF_o-DF_c$  (at 3 rmsd) in purple (negative)  
and green (positive)

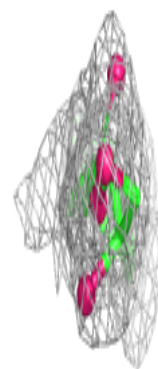
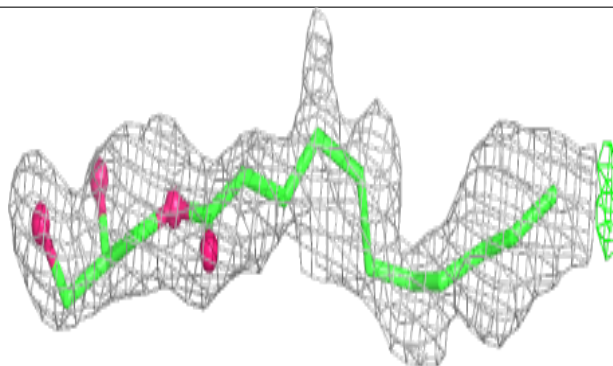
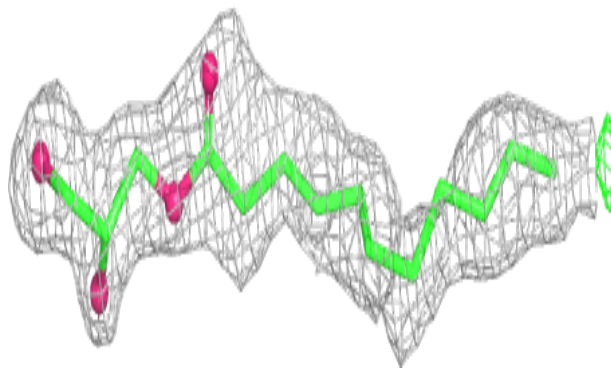




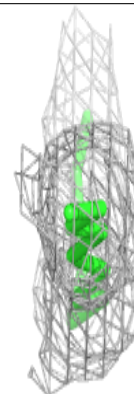
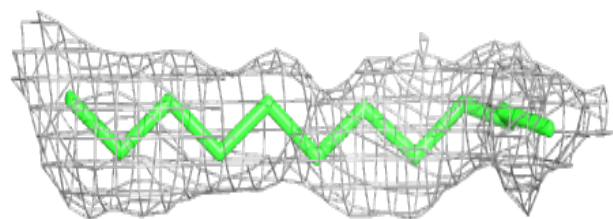
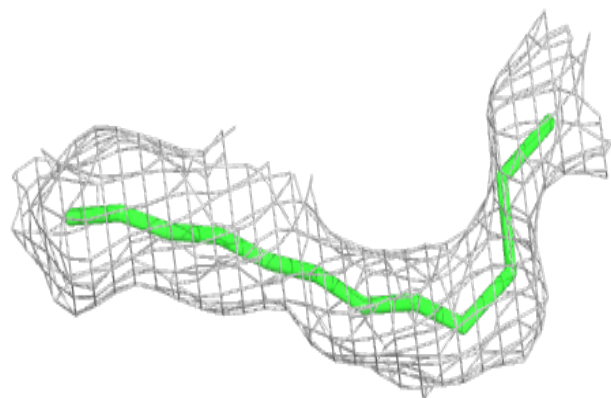


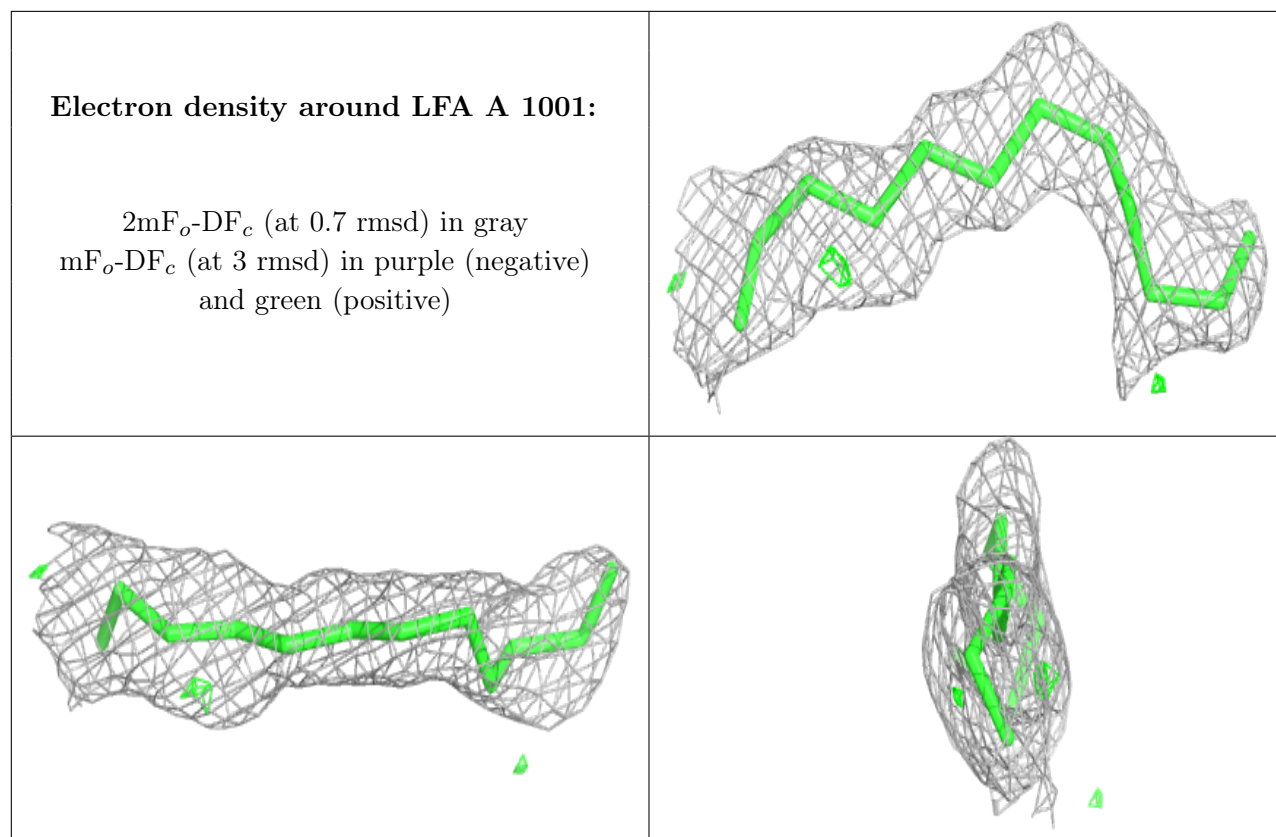
**Electron density around OLC A 1013:**

$2mF_o-DF_c$  (at 0.7 rmsd) in gray  
 $mF_o-DF_c$  (at 3 rmsd) in purple (negative)  
and green (positive)

**Electron density around LFA A 1018:**

$2mF_o-DF_c$  (at 0.7 rmsd) in gray  
 $mF_o-DF_c$  (at 3 rmsd) in purple (negative)  
and green (positive)





## 6.5 Other polymers [i](#)

There are no such residues in this entry.