



Full wwPDB X-ray Structure Validation Report ⓘ

May 10, 2021 – 08:13 pm BST

PDB ID : 6ZP3
Title : Thioredoxin glutathione reductase from *Schistosoma mansoni* in complex with 2-Methylindole-3-acetic acid
Authors : Fata, F.; Silvestri, I.; Williams, D.L.; Angelucci, F.
Deposited on : 2020-07-08
Resolution : 1.80 Å(reported)

This is a Full wwPDB X-ray Structure Validation Report for a publicly released PDB entry.

We welcome your comments at validation@mail.wwpdb.org

A user guide is available at

<https://www.wwpdb.org/validation/2017/XrayValidationReportHelp>

with specific help available everywhere you see the ⓘ symbol.

The following versions of software and data (see [references ⓘ](#)) were used in the production of this report:

MolProbity : 4.02b-467
Mogul : 1.8.5 (274361), CSD as541be (2020)
Xtriage (Phenix) : 1.13
EDS : 2.18
buster-report : 1.1.7 (2018)
Percentile statistics : 20191225.v01 (using entries in the PDB archive December 25th 2019)
Refmac : 5.8.0158
CCP4 : 7.0.044 (Gargrove)
Ideal geometry (proteins) : Engh & Huber (2001)
Ideal geometry (DNA, RNA) : Parkinson et al. (1996)
Validation Pipeline (wwPDB-VP) : 2.18

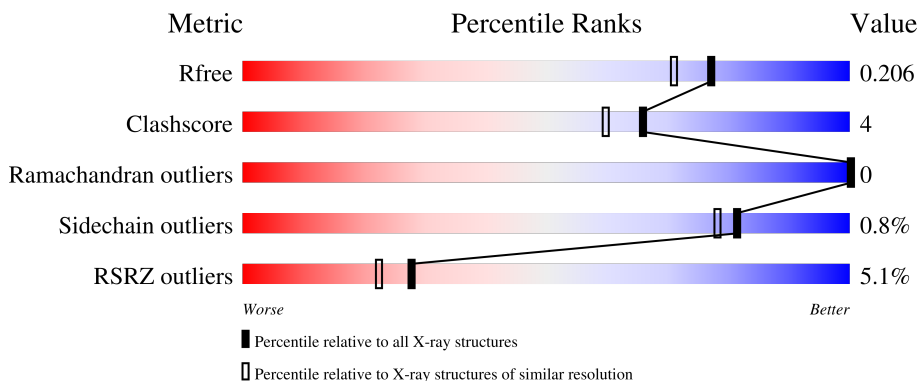
1 Overall quality at a glance

The following experimental techniques were used to determine the structure:

X-RAY DIFFRACTION

The reported resolution of this entry is 1.80 Å.

Percentile scores (ranging between 0-100) for global validation metrics of the entry are shown in the following graphic. The table shows the number of entries on which the scores are based.



Metric	Whole archive (#Entries)	Similar resolution (#Entries, resolution range(Å))
R_{free}	130704	5950 (1.80-1.80)
Clashscore	141614	6793 (1.80-1.80)
Ramachandran outliers	138981	6697 (1.80-1.80)
Sidechain outliers	138945	6696 (1.80-1.80)
RSRZ outliers	127900	5850 (1.80-1.80)

The table below summarises the geometric issues observed across the polymeric chains and their fit to the electron density. The red, orange, yellow and green segments of the lower bar indicate the fraction of residues that contain outliers for ≥ 3 , 2, 1 and 0 types of geometric quality criteria respectively. A grey segment represents the fraction of residues that are not modelled. The numeric value for each fraction is indicated below the corresponding segment, with a dot representing fractions $\leq 5\%$. The upper red bar (where present) indicates the fraction of residues that have poor fit to the electron density. The numeric value is given above the bar.

Mol	Chain	Length	Quality of chain
1	A	598	

The following table lists non-polymeric compounds, carbohydrate monomers and non-standard residues in protein, DNA, RNA chains that are outliers for geometric or electron-density-fit criteria:

Mol	Type	Chain	Res	Chirality	Geometry	Clashes	Electron density
5	DMS	A	604	-	X	-	-

2 Entry composition [i](#)

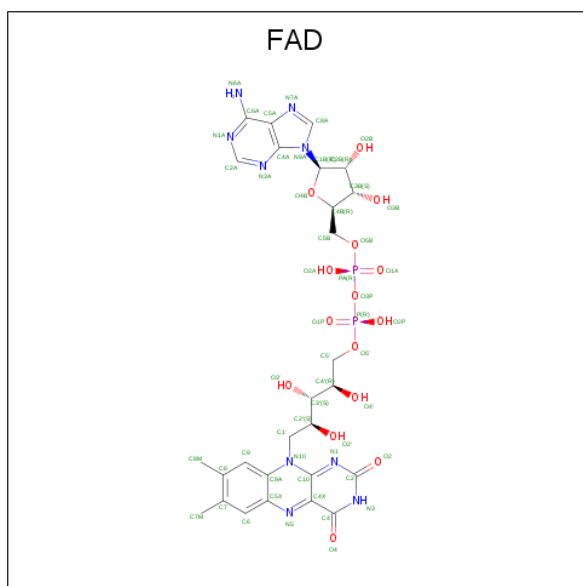
There are 11 unique types of molecules in this entry. The entry contains 9724 atoms, of which 4696 are hydrogens and 0 are deuteriums.

In the tables below, the ZeroOcc column contains the number of atoms modelled with zero occupancy, the AltConf column contains the number of residues with at least one atom in alternate conformation and the Trace column contains the number of residues modelled with at most 2 atoms.

- Molecule 1 is a protein called Thioredoxin glutathione reductase.

Mol	Chain	Residues	Atoms					ZeroOcc	AltConf	Trace	
			Total	C	H	N	O				S
1	A	588	9168	2896	4597	776	876	23	0	17	0

- Molecule 2 is FLAVIN-ADENINE DINUCLEOTIDE (three-letter code: FAD) (formula: $C_{27}H_{33}N_9O_{15}P_2$).

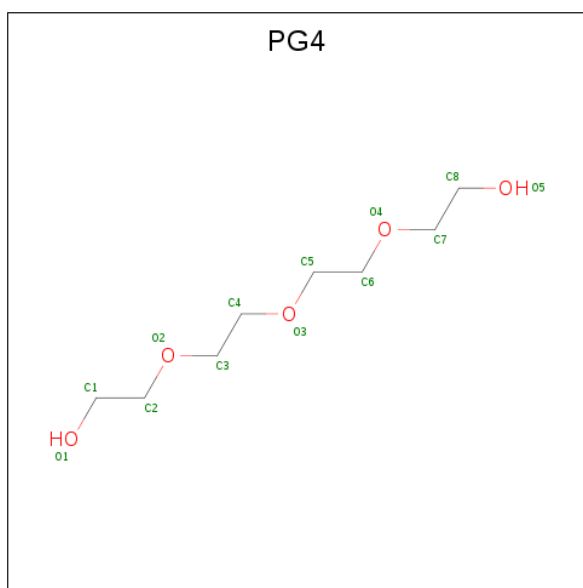


Mol	Chain	Residues	Atoms						ZeroOcc	AltConf
			Total	C	H	N	O	P		
2	A	1	84	27	31	9	15	2	0	0

- Molecule 3 is POTASSIUM ION (three-letter code: K) (formula: K).

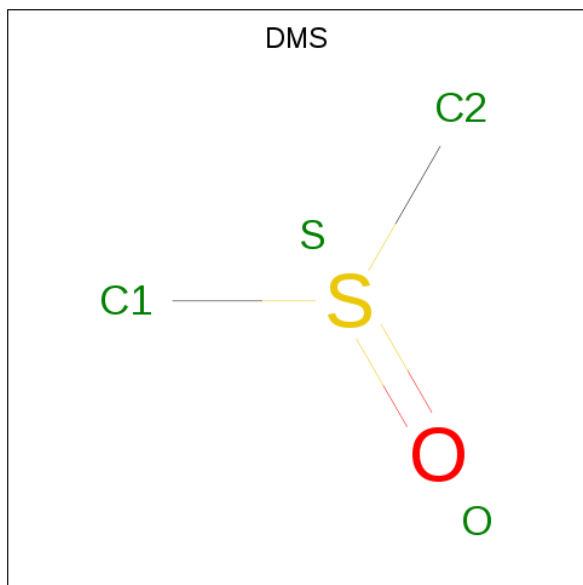
Mol	Chain	Residues	Atoms		ZeroOcc	AltConf
3	A	1	Total	K	0	0
			1	1		

- Molecule 4 is TETRAETHYLENE GLYCOL (three-letter code: PG4) (formula: $C_8H_{18}O_5$).



Mol	Chain	Residues	Atoms				ZeroOcc	AltConf
			Total	C	H	O		
4	A	1	31	8	18	5	0	0

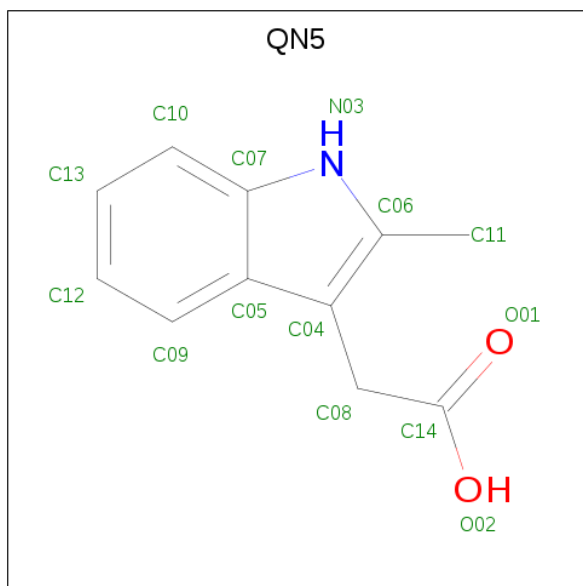
- Molecule 5 is DIMETHYL SULFOXIDE (three-letter code: DMS) (formula: C_2H_6OS).



Mol	Chain	Residues	Atoms					ZeroOcc	AltConf
			Total	C	H	O	S		
5	A	1	10	2	6	1	1	0	0

- Molecule 6 is 2-(2-methyl-1 {H}-indol-3-yl)ethanoic acid (three-letter code: QN5) (formula:

C₁₁H₁₁NO₂) (labeled as "Ligand of Interest" by depositor).

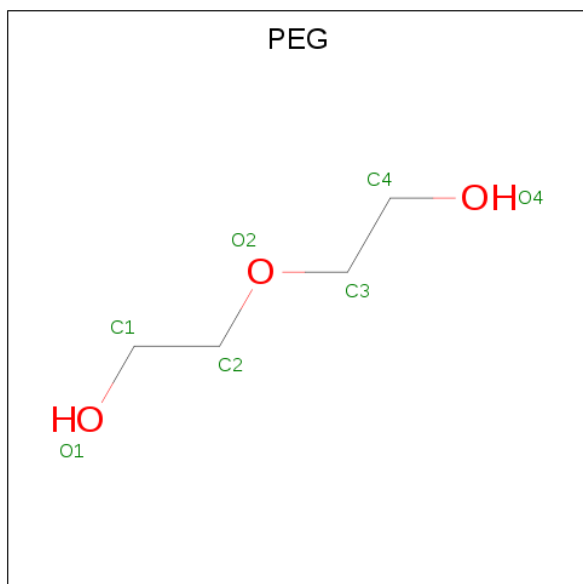


Mol	Chain	Residues	Atoms				ZeroOcc	AltConf	
			Total	C	H	N			O
6	A	1	24	11	10	1	2	0	0

- Molecule 7 is CALCIUM ION (three-letter code: CA) (formula: Ca).

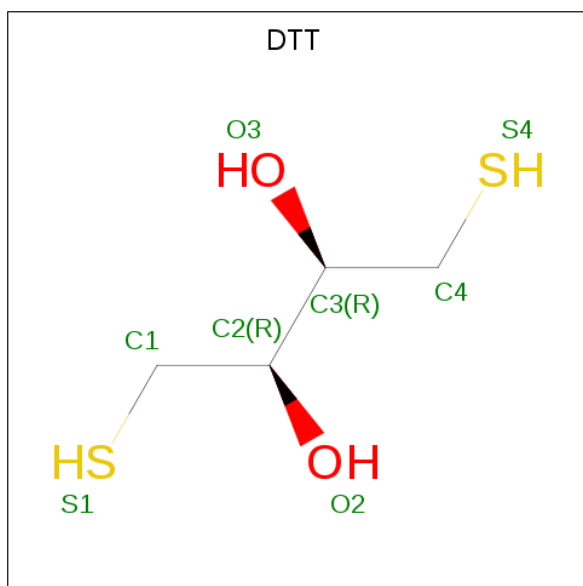
Mol	Chain	Residues	Atoms		ZeroOcc	AltConf
			Total	Ca		
7	A	1	1	1	0	0

- Molecule 8 is DI(HYDROXYETHYL)ETHER (three-letter code: PEG) (formula: C₄H₁₀O₃).



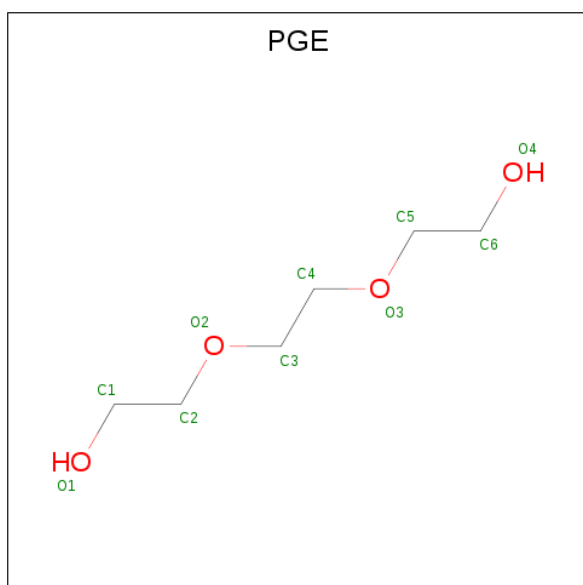
Mol	Chain	Residues	Atoms				ZeroOcc	AltConf
8	A	1	Total	C	H	O	0	0
			17	4	10	3		

- Molecule 9 is 2,3-DIHYDROXY-1,4-DITHIOBUTANE (three-letter code: DTT) (formula: $C_4H_{10}O_2S_2$).



Mol	Chain	Residues	Atoms					ZeroOcc	AltConf
9	A	1	Total	C	H	O	S	0	0
			18	4	10	2	2		

- Molecule 10 is TRIETHYLENE GLYCOL (three-letter code: PGE) (formula: $C_6H_{14}O_4$).



Mol	Chain	Residues	Atoms				ZeroOcc	AltConf
10	A	1	Total	C	H	O	0	0
			24	6	14	4		

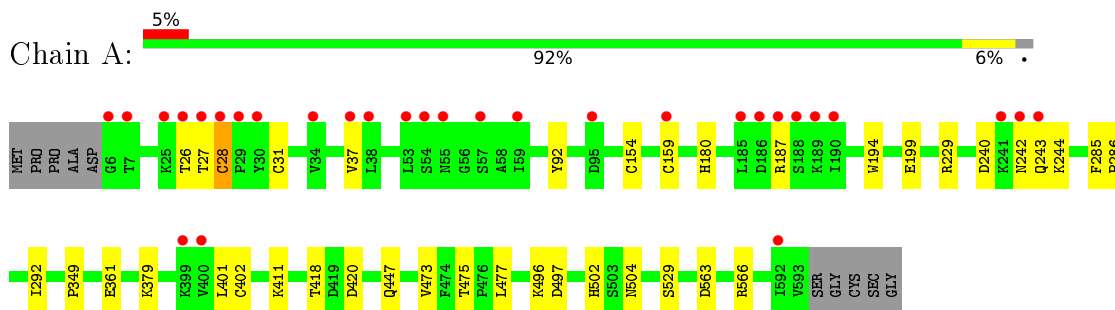
- Molecule 11 is water.

Mol	Chain	Residues	Atoms		ZeroOcc	AltConf
11	A	346	Total	O	0	0
			346	346		

3 Residue-property plots [i](#)

These plots are drawn for all protein, RNA, DNA and oligosaccharide chains in the entry. The first graphic for a chain summarises the proportions of the various outlier classes displayed in the second graphic. The second graphic shows the sequence view annotated by issues in geometry and electron density. Residues are color-coded according to the number of geometric quality criteria for which they contain at least one outlier: green = 0, yellow = 1, orange = 2 and red = 3 or more. A red dot above a residue indicates a poor fit to the electron density ($RSRZ > 2$). Stretches of 2 or more consecutive residues without any outlier are shown as a green connector. Residues present in the sample, but not in the model, are shown in grey.

- Molecule 1: Thioredoxin glutathione reductase



4 Data and refinement statistics

Property	Value	Source
Space group	C 1 2 1	Depositor
Cell constants a, b, c, α , β , γ	141.85Å 102.19Å 58.57Å 90.00° 112.94° 90.00°	Depositor
Resolution (Å)	39.68 – 1.80 39.68 – 1.80	Depositor EDS
% Data completeness (in resolution range)	98.8 (39.68-1.80) 98.8 (39.68-1.80)	Depositor EDS
R_{merge}	0.05	Depositor
R_{sym}	(Not available)	Depositor
$\langle I/\sigma(I) \rangle$ ¹	1.43 (at 1.79Å)	Xtrriage
Refinement program	PHENIX 1.15.2_3472	Depositor
R, R_{free}	0.172 , 0.205 0.172 , 0.206	Depositor DCC
R_{free} test set	3637 reflections (5.17%)	wwPDB-VP
Wilson B-factor (Å ²)	23.1	Xtrriage
Anisotropy	0.066	Xtrriage
Bulk solvent k_{sol} (e/Å ³), B_{sol} (Å ²)	0.45 , 53.9	EDS
L-test for twinning ²	$\langle L \rangle = 0.51$, $\langle L^2 \rangle = 0.34$	Xtrriage
Estimated twinning fraction	0.017 for -h-2*k,l	Xtrriage
F_o, F_c correlation	0.96	EDS
Total number of atoms	9724	wwPDB-VP
Average B, all atoms (Å ²)	34.0	wwPDB-VP

Xtrriage's analysis on translational NCS is as follows: *The largest off-origin peak in the Patterson function is 5.26% of the height of the origin peak. No significant pseudotranslation is detected.*

¹Intensities estimated from amplitudes.

²Theoretical values of $\langle |L| \rangle$, $\langle L^2 \rangle$ for acentric reflections are 0.5, 0.333 respectively for untwinned datasets, and 0.375, 0.2 for perfectly twinned datasets.

5 Model quality [i](#)

5.1 Standard geometry [i](#)

Bond lengths and bond angles in the following residue types are not validated in this section: CA, PG4, DTT, PGE, DMS, PEG, K, QN5, FAD

The Z score for a bond length (or angle) is the number of standard deviations the observed value is removed from the expected value. A bond length (or angle) with $|Z| > 5$ is considered an outlier worth inspection. RMSZ is the root-mean-square of all Z scores of the bond lengths (or angles).

Mol	Chain	Bond lengths		Bond angles	
		RMSZ	# Z >5	RMSZ	# Z >5
1	A	0.49	0/4728	0.65	0/6402

There are no bond length outliers.

There are no bond angle outliers.

There are no chirality outliers.

There are no planarity outliers.

5.2 Too-close contacts [i](#)

In the following table, the Non-H and H(model) columns list the number of non-hydrogen atoms and hydrogen atoms in the chain respectively. The H(added) column lists the number of hydrogen atoms added and optimized by MolProbity. The Clashes column lists the number of clashes within the asymmetric unit, whereas Symm-Clashes lists symmetry-related clashes.

Mol	Chain	Non-H	H(model)	H(added)	Clashes	Symm-Clashes
1	A	4571	4597	4520	35	0
2	A	53	31	31	3	0
3	A	1	0	0	0	0
4	A	13	18	18	0	0
5	A	4	6	6	0	0
6	A	14	10	0	0	0
7	A	1	0	0	0	0
8	A	7	10	10	0	0
9	A	8	10	9	2	0
10	A	10	14	14	1	0
11	A	346	0	0	6	1
All	All	5028	4696	4608	36	1

The all-atom clashscore is defined as the number of clashes found per 1000 atoms (including

hydrogen atoms). The all-atom clashscore for this structure is 4.

All (36) close contacts within the same asymmetric unit are listed below, sorted by their clash magnitude.

Atom-1	Atom-2	Interatomic distance (Å)	Clash overlap (Å)
1:A:402:CYS:SG	9:A:608:DTT:S1	2.33	1.26
1:A:418:THR:OG1	1:A:420:ASP:OD1	1.68	1.09
1:A:199:GLU:OE2	11:A:701:HOH:O	2.01	0.77
1:A:154:CYS:HG	1:A:159[A]:CYS:CB	2.05	0.69
1:A:285:PHE:CD1	1:A:286:PRO:HD2	2.30	0.66
1:A:159[A]:CYS:SG	2:A:601:FAD:C4X	2.84	0.64
1:A:187:ARG:HG3	1:A:187:ARG:HH21	1.62	0.63
1:A:361:GLU:HA	1:A:361:GLU:OE2	1.99	0.62
1:A:159[A]:CYS:SG	2:A:601:FAD:C10	2.89	0.61
1:A:154:CYS:HG	1:A:159[A]:CYS:HG	0.69	0.56
1:A:566[A]:ARG:HG3	11:A:969:HOH:O	2.06	0.55
1:A:361:GLU:OE2	1:A:361:GLU:CA	2.58	0.52
1:A:563:ASP:OD1	1:A:566[B]:ARG:NH2	2.42	0.52
1:A:187:ARG:HG3	1:A:187:ARG:NH2	2.25	0.51
1:A:194:TRP:HB2	1:A:285:PHE:CD1	2.46	0.51
1:A:473:VAL:HG12	1:A:475:THR:HG23	1.92	0.51
1:A:26:THR:OG1	1:A:27:THR:HG23	2.12	0.49
1:A:566[B]:ARG:NH1	11:A:703:HOH:O	2.39	0.48
1:A:154:CYS:SG	1:A:159[A]:CYS:CB	3.01	0.48
9:A:608:DTT:H3	11:A:935:HOH:O	2.15	0.46
1:A:154:CYS:SG	1:A:159[A]:CYS:HB2	2.55	0.46
1:A:566[B]:ARG:NH2	11:A:703:HOH:O	2.26	0.45
1:A:504:ASN:HD21	10:A:609:PGE:H6	1.83	0.44
1:A:497:ASP:OD1	1:A:529:SER:HB3	2.18	0.44
1:A:37:VAL:HG13	1:A:92:TYR:CD2	2.54	0.43
1:A:229[A]:ARG:HG2	1:A:401:LEU:HD21	2.01	0.43
1:A:180:HIS:HD2	11:A:1001:HOH:O	2.00	0.42
1:A:496:LYS:H	1:A:496:LYS:CD	2.31	0.42
1:A:242:ASN:O	1:A:243:GLN:HB2	2.19	0.42
1:A:292:ILE:HD13	1:A:349:PRO:HG3	2.01	0.42
1:A:229[A]:ARG:HG2	1:A:401:LEU:CD2	2.50	0.42
1:A:28:CYS:SG	1:A:31:CYS:N	2.90	0.41
1:A:379:LYS:HD2	1:A:379:LYS:HA	1.73	0.41
1:A:159[A]:CYS:SG	2:A:601:FAD:C4	3.09	0.41
1:A:477:LEU:HD12	1:A:477:LEU:HA	1.95	0.41
1:A:240:ASP:OD2	1:A:244:LYS:HB3	2.21	0.41

All (1) symmetry-related close contacts are listed below. The label for Atom-2 includes the symmetry operator and encoded unit-cell translations to be applied.

Atom-1	Atom-2	Interatomic distance (Å)	Clash overlap (Å)
11:A:972:HOH:O	11:A:972:HOH:O[2_556]	1.96	0.24

5.3 Torsion angles [i](#)

5.3.1 Protein backbone [i](#)

In the following table, the Percentiles column shows the percent Ramachandran outliers of the chain as a percentile score with respect to all X-ray entries followed by that with respect to entries of similar resolution.

The Analysed column shows the number of residues for which the backbone conformation was analysed, and the total number of residues.

Mol	Chain	Analysed	Favoured	Allowed	Outliers	Percentiles
1	A	602/598 (101%)	589 (98%)	13 (2%)	0	100 100

There are no Ramachandran outliers to report.

5.3.2 Protein sidechains [i](#)

In the following table, the Percentiles column shows the percent sidechain outliers of the chain as a percentile score with respect to all X-ray entries followed by that with respect to entries of similar resolution.

The Analysed column shows the number of residues for which the sidechain conformation was analysed, and the total number of residues.

Mol	Chain	Analysed	Rotameric	Outliers	Percentiles
1	A	505/495 (102%)	501 (99%)	4 (1%)	81 78

All (4) residues with a non-rotameric sidechain are listed below:

Mol	Chain	Res	Type
1	A	28	CYS
1	A	411	LYS
1	A	447	GLN
1	A	502	HIS

Sometimes sidechains can be flipped to improve hydrogen bonding and reduce clashes. All (3) such sidechains are listed below:

Mol	Chain	Res	Type
1	A	180	HIS
1	A	219	ASN
1	A	220	GLN

5.3.3 RNA [i](#)

There are no RNA molecules in this entry.

5.4 Non-standard residues in protein, DNA, RNA chains [i](#)

There are no non-standard protein/DNA/RNA residues in this entry.

5.5 Carbohydrates [i](#)

There are no monosaccharides in this entry.

5.6 Ligand geometry [i](#)

Of 9 ligands modelled in this entry, 2 are monoatomic - leaving 7 for Mogul analysis.

In the following table, the Counts columns list the number of bonds (or angles) for which Mogul statistics could be retrieved, the number of bonds (or angles) that are observed in the model and the number of bonds (or angles) that are defined in the Chemical Component Dictionary. The Link column lists molecule types, if any, to which the group is linked. The Z score for a bond length (or angle) is the number of standard deviations the observed value is removed from the expected value. A bond length (or angle) with $|Z| > 2$ is considered an outlier worth inspection. RMSZ is the root-mean-square of all Z scores of the bond lengths (or angles).

Mol	Type	Chain	Res	Link	Bond lengths			Bond angles		
					Counts	RMSZ	# Z > 2	Counts	RMSZ	# Z > 2
10	PGE	A	609	-	9,9,9	0.57	0	8,8,8	0.37	0
5	DMS	A	604	-	3,3,3	0.90	0	3,3,3	3.15	3 (100%)
2	FAD	A	601	-	51,58,58	3.88	17 (33%)	60,89,89	3.08	14 (23%)
8	PEG	A	607	-	6,6,6	0.42	0	5,5,5	0.31	0
9	DTT	A	608	-	7,7,7	1.23	1 (14%)	4,8,8	2.54	2 (50%)
6	QN5	A	605	-	10,15,15	4.79	6 (60%)	12,21,21	0.89	0
4	PG4	A	603	-	12,12,12	0.53	0	11,11,11	0.36	0

In the following table, the Chirals column lists the number of chiral outliers, the number of chiral centers analysed, the number of these observed in the model and the number defined in the Chemical Component Dictionary. Similar counts are reported in the Torsion and Rings columns.

'-' means no outliers of that kind were identified.

Mol	Type	Chain	Res	Link	Chirals	Torsions	Rings
10	PGE	A	609	-	-	3/7/7/7	-
2	FAD	A	601	-	-	4/30/50/50	0/6/6/6
8	PEG	A	607	-	-	2/4/4/4	-
9	DTT	A	608	-	-	6/8/8/8	-
6	QN5	A	605	-	-	0/2/4/4	0/2/2/2
4	PG4	A	603	-	-	5/10/10/10	-

All (24) bond length outliers are listed below:

Mol	Chain	Res	Type	Atoms	Z	Observed(Å)	Ideal(Å)
2	A	601	FAD	C2B-C1B	-14.45	1.31	1.53
2	A	601	FAD	O4B-C1B	14.16	1.60	1.41
6	A	605	QN5	C10-C07	8.85	1.57	1.41
6	A	605	QN5	C09-C05	7.35	1.57	1.42
2	A	601	FAD	C5X-N5	7.14	1.47	1.35
2	A	601	FAD	C10-N1	6.59	1.41	1.33
6	A	605	QN5	C12-C09	6.17	1.50	1.36
2	A	601	FAD	C9A-N10	6.08	1.46	1.38
6	A	605	QN5	C13-C10	5.91	1.50	1.36
2	A	601	FAD	C4X-N5	5.66	1.41	1.33
2	A	601	FAD	C4X-C10	5.58	1.44	1.38
2	A	601	FAD	C4-N3	4.87	1.41	1.33
2	A	601	FAD	C2-N3	4.63	1.47	1.38
2	A	601	FAD	O4B-C4B	-4.48	1.35	1.45
2	A	601	FAD	C4-C4X	4.31	1.48	1.41
6	A	605	QN5	C12-C13	3.95	1.48	1.38
2	A	601	FAD	C2A-N3A	3.41	1.37	1.32
2	A	601	FAD	C2-N1	2.91	1.43	1.38
2	A	601	FAD	C6A-N6A	2.72	1.44	1.34
2	A	601	FAD	C5A-C4A	-2.64	1.33	1.40
6	A	605	QN5	C11-C06	2.42	1.54	1.50
2	A	601	FAD	O3B-C3B	-2.36	1.37	1.43
2	A	601	FAD	O2B-C2B	2.25	1.48	1.43
9	A	608	DTT	O3-C3	-2.17	1.38	1.43

All (19) bond angle outliers are listed below:

Mol	Chain	Res	Type	Atoms	Z	Observed(°)	Ideal(°)
2	A	601	FAD	C4-N3-C2	11.24	124.63	115.14
2	A	601	FAD	C5A-C6A-N6A	9.15	134.26	120.35

Continued on next page...

Continued from previous page...

Mol	Chain	Res	Type	Atoms	Z	Observed(°)	Ideal(°)
2	A	601	FAD	C1'-N10-C9A	8.44	124.94	118.29
2	A	601	FAD	N6A-C6A-N1A	-6.89	104.28	118.57
2	A	601	FAD	C4X-C4-N3	-6.10	115.09	123.43
2	A	601	FAD	C7M-C7-C8	5.76	132.54	120.74
2	A	601	FAD	N3A-C2A-N1A	-5.26	120.45	128.68
2	A	601	FAD	C5X-C9A-N10	5.26	121.53	117.72
2	A	601	FAD	C7M-C7-C6	-4.98	108.42	120.34
5	A	604	DMS	C2-S-C1	3.74	117.70	98.44
9	A	608	DTT	C3-C4-S4	-3.60	103.99	114.47
2	A	601	FAD	C5'-C4'-C3'	-3.56	105.34	112.20
9	A	608	DTT	C2-C1-S1	-3.43	104.49	114.47
2	A	601	FAD	O4B-C1B-C2B	-3.39	101.97	106.93
2	A	601	FAD	C8M-C8-C7	-3.35	113.87	120.74
2	A	601	FAD	C9A-N10-C10	-3.21	117.70	121.91
5	A	604	DMS	O-S-C2	3.05	122.09	106.54
2	A	601	FAD	C4'-C3'-C2'	-2.66	107.83	113.36
5	A	604	DMS	O-S-C1	2.54	119.48	106.54

There are no chirality outliers.

All (20) torsion outliers are listed below:

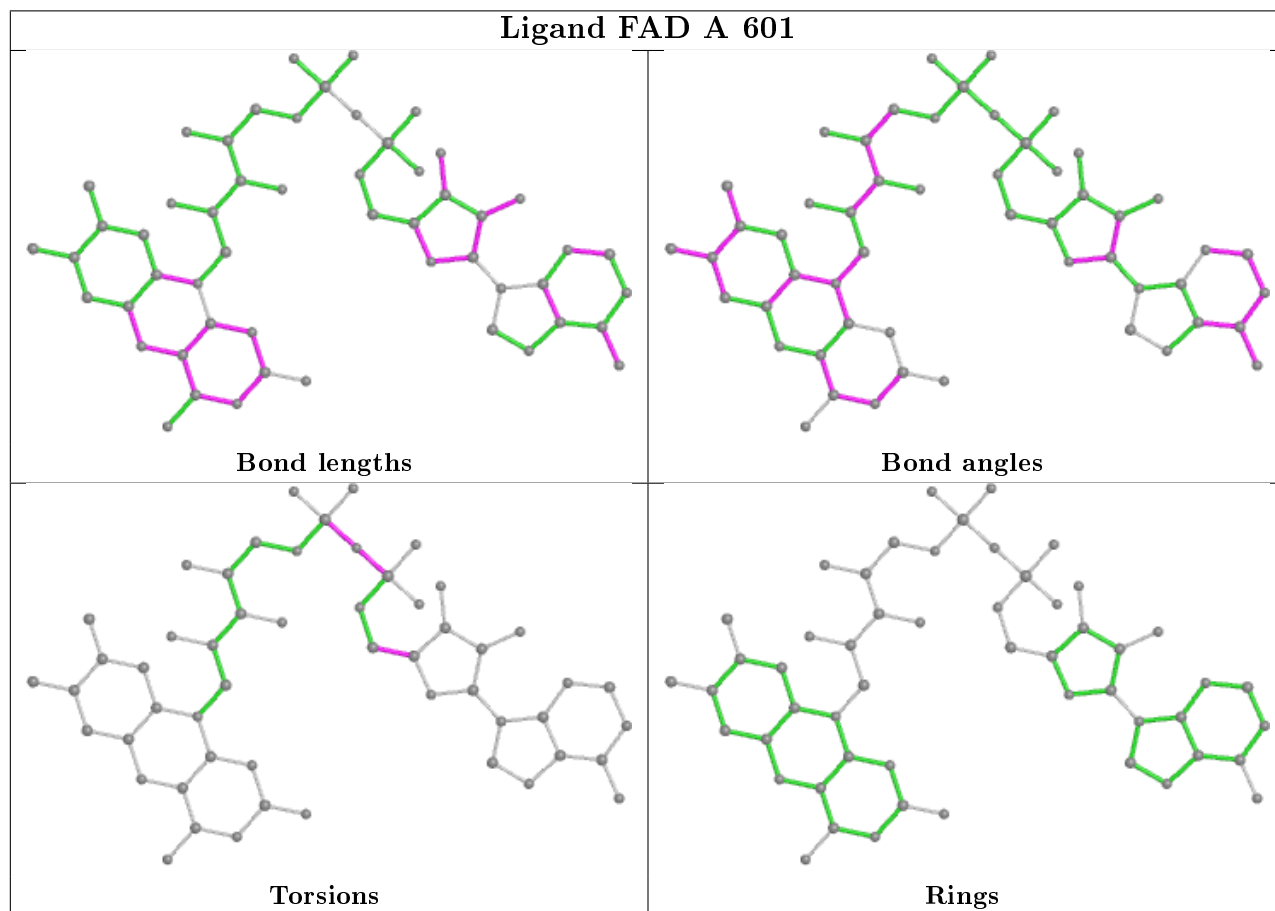
Mol	Chain	Res	Type	Atoms
9	A	608	DTT	S1-C1-C2-O2
9	A	608	DTT	S1-C1-C2-C3
9	A	608	DTT	C1-C2-C3-O3
9	A	608	DTT	C1-C2-C3-C4
9	A	608	DTT	O2-C2-C3-O3
9	A	608	DTT	O2-C2-C3-C4
4	A	603	PG4	O2-C3-C4-O3
10	A	609	PGE	O1-C1-C2-O2
8	A	607	PEG	O1-C1-C2-O2
4	A	603	PG4	O4-C7-C8-O5
2	A	601	FAD	P-O3P-PA-O1A
2	A	601	FAD	PA-O3P-P-O5'
4	A	603	PG4	C4-C3-O2-C2
4	A	603	PG4	C3-C4-O3-C5
4	A	603	PG4	O3-C5-C6-O4
8	A	607	PEG	C4-C3-O2-C2
10	A	609	PGE	C3-C4-O3-C5
2	A	601	FAD	P-O3P-PA-O2A
2	A	601	FAD	O4B-C4B-C5B-O5B
10	A	609	PGE	O2-C3-C4-O3

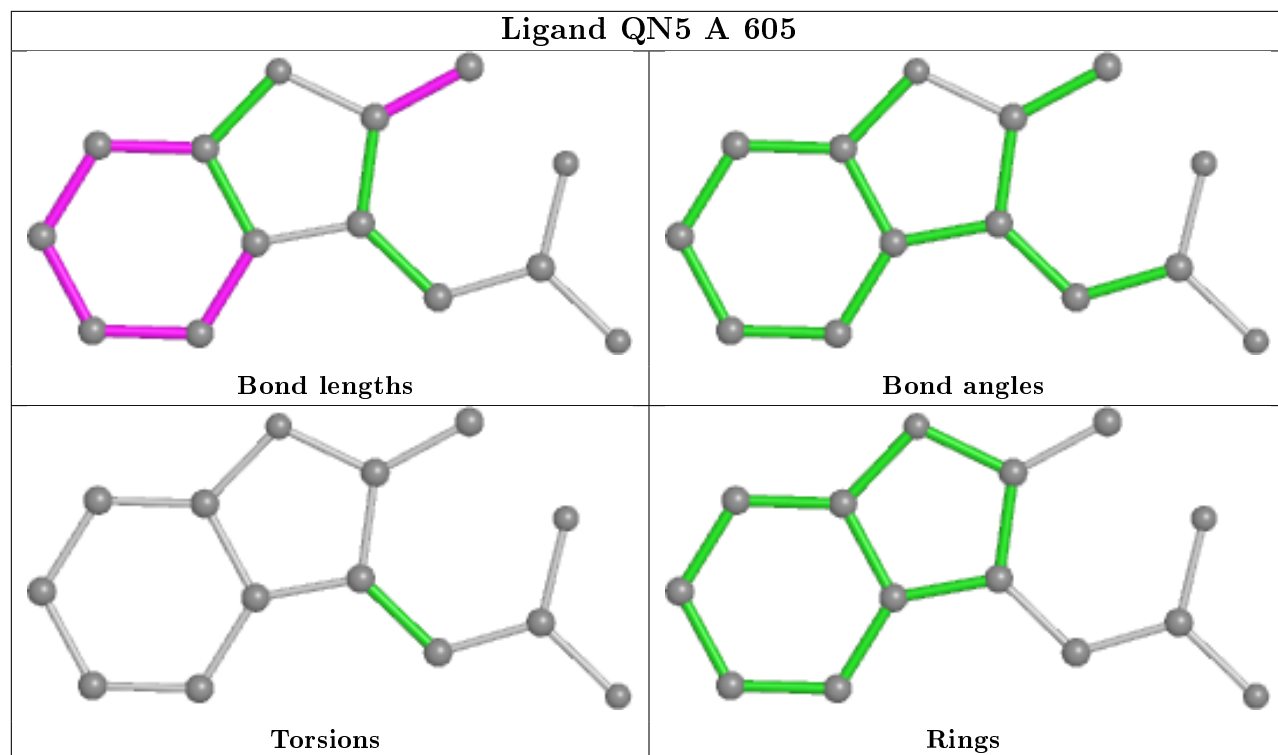
There are no ring outliers.

3 monomers are involved in 6 short contacts:

Mol	Chain	Res	Type	Clashes	Symm-Clashes
10	A	609	PGE	1	0
2	A	601	FAD	3	0
9	A	608	DTT	2	0

The following is a two-dimensional graphical depiction of Mogul quality analysis of bond lengths, bond angles, torsion angles, and ring geometry for all instances of the Ligand of Interest. In addition, ligands with molecular weight > 250 and outliers as shown on the validation Tables will also be included. For torsion angles, if less than 5% of the Mogul distribution of torsion angles is within 10 degrees of the torsion angle in question, then that torsion angle is considered an outlier. Any bond that is central to one or more torsion angles identified as an outlier by Mogul will be highlighted in the graph. For rings, the root-mean-square deviation (RMSD) between the ring in question and similar rings identified by Mogul is calculated over all ring torsion angles. If the average RMSD is greater than 60 degrees and the minimal RMSD between the ring in question and any Mogul-identified rings is also greater than 60 degrees, then that ring is considered an outlier. The outliers are highlighted in purple. The color gray indicates Mogul did not find sufficient equivalents in the CSD to analyse the geometry.





5.7 Other polymers [i](#)

There are no such residues in this entry.

5.8 Polymer linkage issues [i](#)

There are no chain breaks in this entry.

6 Fit of model and data [i](#)

6.1 Protein, DNA and RNA chains [i](#)

In the following table, the column labelled ‘#RSRZ> 2’ contains the number (and percentage) of RSRZ outliers, followed by percent RSRZ outliers for the chain as percentile scores relative to all X-ray entries and entries of similar resolution. The OWAB column contains the minimum, median, 95th percentile and maximum values of the occupancy-weighted average B-factor per residue. The column labelled ‘Q< 0.9’ lists the number of (and percentage) of residues with an average occupancy less than 0.9.

Mol	Chain	Analysed	<RSRZ>	#RSRZ>2	OWAB(Å ²)	Q<0.9
1	A	588/598 (98%)	-0.07	30 (5%) 28 22	14, 25, 60, 83	1 (0%)

All (30) RSRZ outliers are listed below:

Mol	Chain	Res	Type	RSRZ
1	A	186	ASP	5.6
1	A	188	SER	5.4
1	A	6	GLY	5.0
1	A	400	VAL	4.8
1	A	189	LYS	4.7
1	A	26	THR	3.9
1	A	54	SER	3.9
1	A	241	LYS	3.8
1	A	37	VAL	3.7
1	A	53	LEU	3.5
1	A	55	ASN	3.4
1	A	30	TYR	3.0
1	A	59	ILE	3.0
1	A	27	THR	2.8
1	A	34	VAL	2.7
1	A	38	LEU	2.7
1	A	57	SER	2.6
1	A	190	ILE	2.6
1	A	592	ILE	2.5
1	A	187	ARG	2.5
1	A	95	ASP	2.4
1	A	185	LEU	2.4
1	A	29	PRO	2.4
1	A	399[A]	LYS	2.3
1	A	7	THR	2.3
1	A	242	ASN	2.3
1	A	28	CYS	2.3

Continued on next page...

Continued from previous page...

Mol	Chain	Res	Type	RSRZ
1	A	159[A]	CYS	2.3
1	A	243	GLN	2.1
1	A	25	LYS	2.1

6.2 Non-standard residues in protein, DNA, RNA chains [i](#)

There are no non-standard protein/DNA/RNA residues in this entry.

6.3 Carbohydrates [i](#)

There are no monosaccharides in this entry.

6.4 Ligands [i](#)

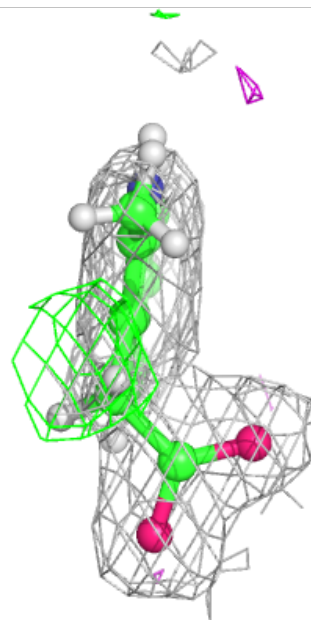
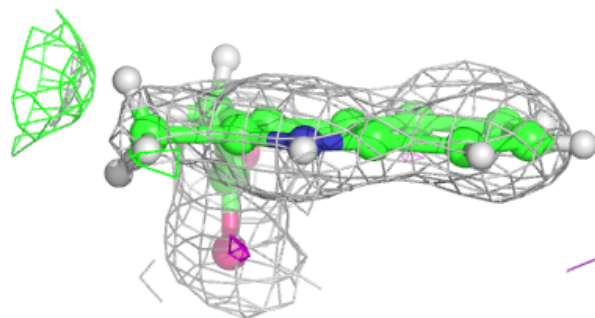
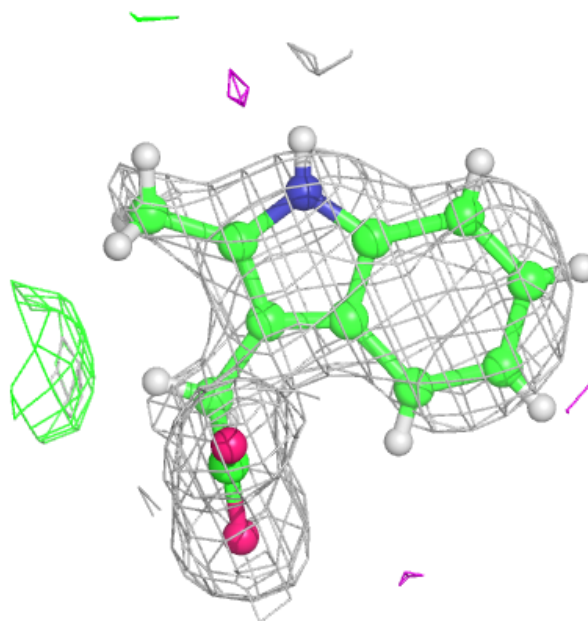
In the following table, the Atoms column lists the number of modelled atoms in the group and the number defined in the chemical component dictionary. The B-factors column lists the minimum, median, 95th percentile and maximum values of B factors of atoms in the group. The column labelled 'Q< 0.9' lists the number of atoms with occupancy less than 0.9.

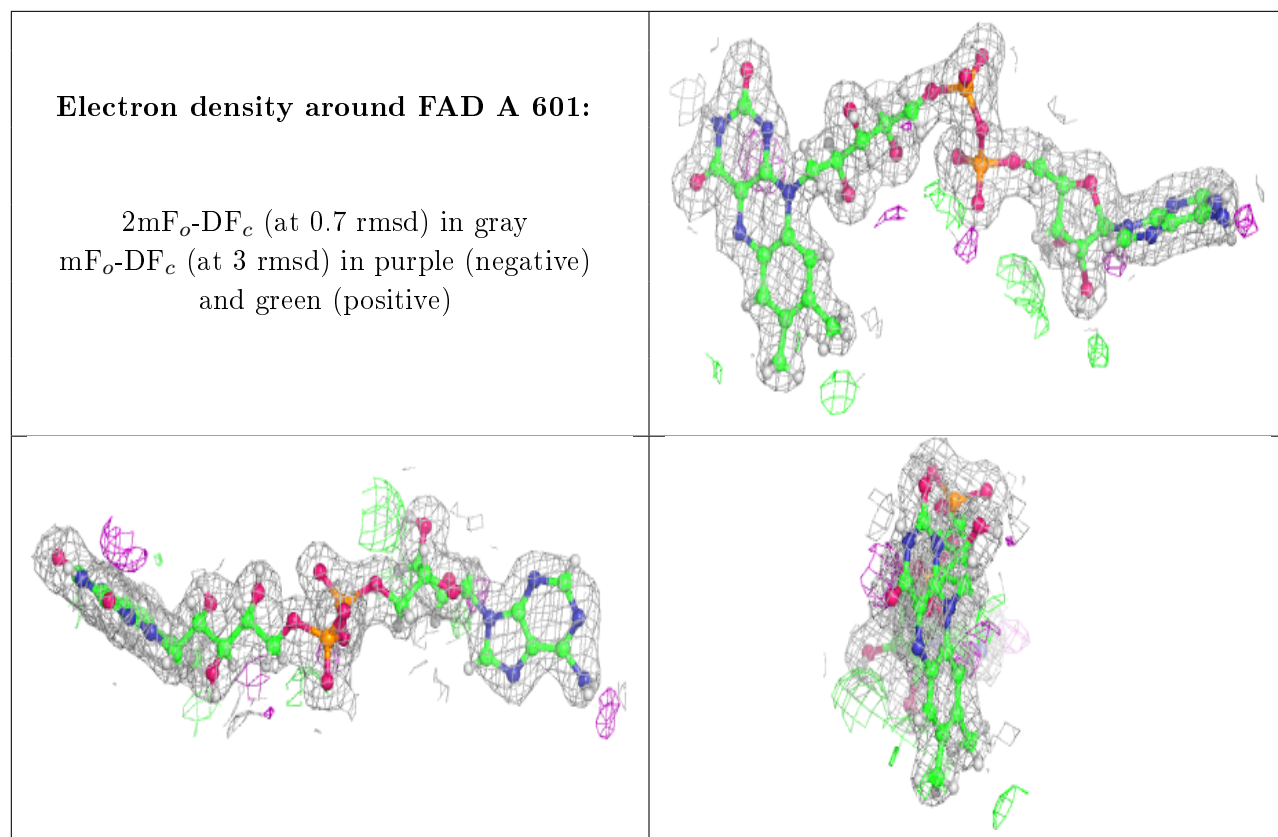
Mol	Type	Chain	Res	Atoms	RSCC	RSR	B-factors(Å ²)	Q<0.9
4	PG4	A	603	13/13	0.78	0.22	59,71,79,80	0
8	PEG	A	607	7/7	0.78	0.23	46,57,70,73	0
6	QN5	A	605	14/14	0.91	0.19	30,43,50,53	0
5	DMS	A	604	4/4	0.95	0.11	29,35,40,49	0
9	DTT	A	608	8/8	0.95	0.19	46,57,69,82	0
10	PGE	A	609	10/10	0.95	0.25	29,52,64,65	0
2	FAD	A	601	53/53	0.97	0.09	17,23,31,37	0
7	CA	A	606	1/1	1.00	0.10	21,21,21,21	0
3	K	A	602	1/1	1.00	0.18	15,15,15,15	0

The following is a graphical depiction of the model fit to experimental electron density of all instances of the Ligand of Interest. In addition, ligands with molecular weight > 250 and outliers as shown on the geometry validation Tables will also be included. Each fit is shown from different orientation to approximate a three-dimensional view.

Electron density around QN5 A 605:

$2mF_o-DF_c$ (at 0.7 rmsd) in gray
 mF_o-DF_c (at 3 rmsd) in purple (negative)
and green (positive)





6.5 Other polymers [i](#)

There are no such residues in this entry.