



Full wwPDB X-ray Structure Validation Report ⓘ

May 22, 2023 – 07:26 pm BST

PDB ID : 3ZUY
Title : Crystal structure of a bacterial homologue of the bile acid sodium symporter ASBT.
Authors : Hu, N.-J.; Iwata, S.; Cameron, A.D.; Drew, D.
Deposited on : 2011-07-21
Resolution : 2.20 Å (reported)

This is a Full wwPDB X-ray Structure Validation Report for a publicly released PDB entry.

We welcome your comments at validation@mail.wwpdb.org

A user guide is available at

<https://www.wwpdb.org/validation/2017/XrayValidationReportHelp>

with specific help available everywhere you see the ⓘ symbol.

The types of validation reports are described at

<http://www.wwpdb.org/validation/2017/FAQs#types>.

The following versions of software and data (see [references ⓘ](#)) were used in the production of this report:

MolProbity : 4.02b-467
Mogul : 1.8.4, CSD as541be (2020)
Xtriage (Phenix) : 1.13
EDS : 2.33
buster-report : 1.1.7 (2018)
Percentile statistics : 20191225.v01 (using entries in the PDB archive December 25th 2019)
Refmac : 5.8.0158
CCP4 : 7.0.044 (Gargrove)
Ideal geometry (proteins) : Engh & Huber (2001)
Ideal geometry (DNA, RNA) : Parkinson et al. (1996)
Validation Pipeline (wwPDB-VP) : 2.33

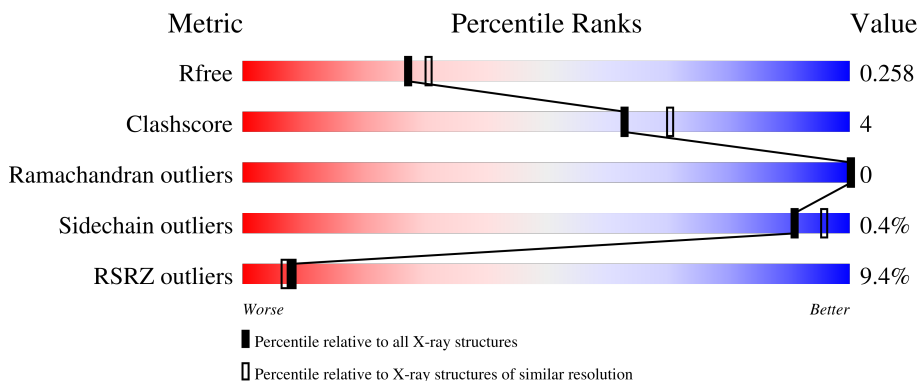
1 Overall quality at a glance

The following experimental techniques were used to determine the structure:

X-RAY DIFFRACTION

The reported resolution of this entry is 2.20 Å.

Percentile scores (ranging between 0-100) for global validation metrics of the entry are shown in the following graphic. The table shows the number of entries on which the scores are based.



Metric	Whole archive (#Entries)	Similar resolution (#Entries, resolution range(Å))
R_{free}	130704	4898 (2.20-2.20)
Clashscore	141614	5594 (2.20-2.20)
Ramachandran outliers	138981	5503 (2.20-2.20)
Sidechain outliers	138945	5504 (2.20-2.20)
RSRZ outliers	127900	4800 (2.20-2.20)

The table below summarises the geometric issues observed across the polymeric chains and their fit to the electron density. The red, orange, yellow and green segments of the lower bar indicate the fraction of residues that contain outliers for ≥ 3 , 2, 1 and 0 types of geometric quality criteria respectively. A grey segment represents the fraction of residues that are not modelled. The numeric value for each fraction is indicated below the corresponding segment, with a dot representing fractions $\leq 5\%$. The upper red bar (where present) indicates the fraction of residues that have poor fit to the electron density. The numeric value is given above the bar.

Mol	Chain	Length	Quality of chain
1	A	323	

2 Entry composition [i](#)

There are 6 unique types of molecules in this entry. The entry contains 2483 atoms, of which 0 are hydrogens and 0 are deuteriums.

In the tables below, the ZeroOcc column contains the number of atoms modelled with zero occupancy, the AltConf column contains the number of residues with at least one atom in alternate conformation and the Trace column contains the number of residues modelled with at most 2 atoms.

- Molecule 1 is a protein called Transporter.

Mol	Chain	Residues	Atoms					ZeroOcc	AltConf	Trace
			Total	C	N	O	S			
1	A	308	2264	1515	355	381	13	0	0	0

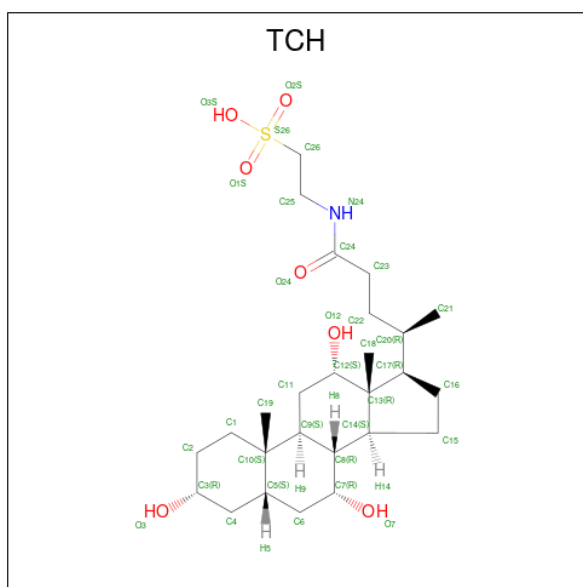
There are 8 discrepancies between the modelled and reference sequences:

Chain	Residue	Modelled	Actual	Comment	Reference
A	316	GLY	-	expression tag	UNP Q9K0A9
A	317	SER	-	expression tag	UNP Q9K0A9
A	318	GLU	-	expression tag	UNP Q9K0A9
A	319	ASN	-	expression tag	UNP Q9K0A9
A	320	LEU	-	expression tag	UNP Q9K0A9
A	321	TYR	-	expression tag	UNP Q9K0A9
A	322	PHE	-	expression tag	UNP Q9K0A9
A	323	GLN	-	expression tag	UNP Q9K0A9

- Molecule 2 is SODIUM ION (three-letter code: NA) (formula: Na).

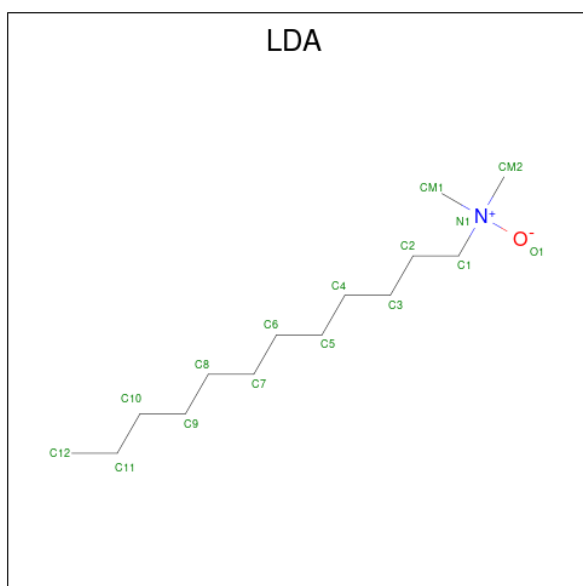
Mol	Chain	Residues	Atoms		ZeroOcc	AltConf
2	A	2	Total	Na	0	0
			2	2		

- Molecule 3 is TAUROCHOLIC ACID (three-letter code: TCH) (formula: C₂₆H₄₅NO₇S).



Mol	Chain	Residues	Atoms				ZeroOcc	AltConf		
3	A	1	Total	C	N	O	S	0	0	
			35	26	1	7	1			
3	A	1	Total	C	O				0	0
			22	19	3					

- Molecule 4 is LAURYL DIMETHYLAMINE-N-OXIDE (three-letter code: LDA) (formula: C₁₄H₃₁NO).



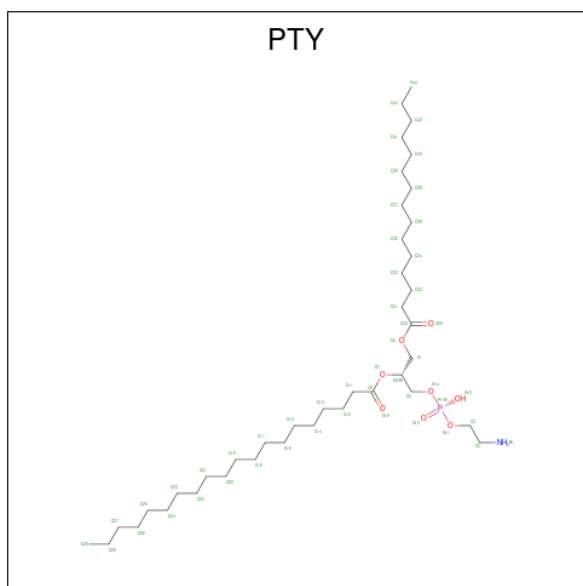
Mol	Chain	Residues	Atoms				ZeroOcc	AltConf
4	A	1	Total	C	N	O	0	0
			10	8	1	1		

Continued on next page...

Continued from previous page...

Mol	Chain	Residues	Atoms				ZeroOcc	AltConf
4	A	1	Total	C	N	O	0	0
			16	14	1	1		
4	A	1	Total	C	N	O	0	0
			16	14	1	1		
4	A	1	Total	C	N	O	0	0
			9	7	1	1		
4	A	1	Total	C			0	0
			9	9				

- Molecule 5 is PHOSPHATIDYLETHANOLAMINE (three-letter code: PTY) (formula: $C_{40}H_{80}NO_8P$).



Mol	Chain	Residues	Atoms					ZeroOcc	AltConf
5	A	1	Total	C	N	O	P	0	0
			34	24	1	8	1		
5	A	1	Total	C	N	O	P	0	0
			40	30	1	8	1		


- Molecule 6 is water.

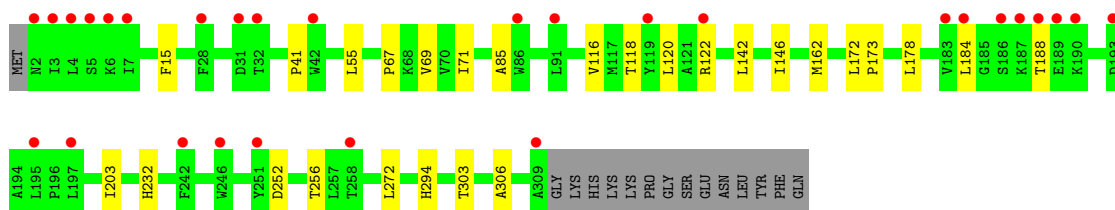
Mol	Chain	Residues	Atoms		ZeroOcc	AltConf
6	A	26	Total	O	0	0
			26	26		

3 Residue-property plots [i](#)

These plots are drawn for all protein, RNA, DNA and oligosaccharide chains in the entry. The first graphic for a chain summarises the proportions of the various outlier classes displayed in the second graphic. The second graphic shows the sequence view annotated by issues in geometry and electron density. Residues are color-coded according to the number of geometric quality criteria for which they contain at least one outlier: green = 0, yellow = 1, orange = 2 and red = 3 or more. A red dot above a residue indicates a poor fit to the electron density ($RSRZ > 2$). Stretches of 2 or more consecutive residues without any outlier are shown as a green connector. Residues present in the sample, but not in the model, are shown in grey.

- Molecule 1: Transporter

Chain A: 



4 Data and refinement statistics

Property	Value	Source
Space group	P 41 2 2	Depositor
Cell constants a, b, c, α , β , γ	73.35Å 73.35Å 162.45Å 90.00° 90.00° 90.00°	Depositor
Resolution (Å)	24.42 – 2.20 24.00 – 2.20	Depositor EDS
% Data completeness (in resolution range)	(Not available) (24.42-2.20) 98.3 (24.00-2.20)	Depositor EDS
R_{merge}	0.08	Depositor
R_{sym}	(Not available)	Depositor
$\langle I/\sigma(I) \rangle$ ¹	2.24 (at 2.19Å)	Xtrriage
Refinement program	BUSTER 2.8.0	Depositor
R, R_{free}	0.212 , 0.245 0.221 , 0.258	Depositor DCC
R_{free} test set	1158 reflections (5.05%)	wwPDB-VP
Wilson B-factor (Å ²)	43.3	Xtrriage
Anisotropy	0.039	Xtrriage
Bulk solvent k_{sol} (e/Å ³), B_{sol} (Å ²)	0.40 , 76.0	EDS
L-test for twinning ²	$\langle L \rangle = 0.46$, $\langle L^2 \rangle = 0.29$	Xtrriage
Estimated twinning fraction	No twinning to report.	Xtrriage
F_o, F_c correlation	0.94	EDS
Total number of atoms	2483	wwPDB-VP
Average B, all atoms (Å ²)	64.0	wwPDB-VP

Xtrriage's analysis on translational NCS is as follows: *The largest off-origin peak in the Patterson function is 5.46% of the height of the origin peak. No significant pseudotranslation is detected.*

¹Intensities estimated from amplitudes.

²Theoretical values of $\langle |L| \rangle$, $\langle L^2 \rangle$ for acentric reflections are 0.5, 0.333 respectively for untwinned datasets, and 0.375, 0.2 for perfectly twinned datasets.

5 Model quality [i](#)

5.1 Standard geometry [i](#)

Bond lengths and bond angles in the following residue types are not validated in this section: TCH, NA, PTY, LDA

The Z score for a bond length (or angle) is the number of standard deviations the observed value is removed from the expected value. A bond length (or angle) with $|Z| > 5$ is considered an outlier worth inspection. RMSZ is the root-mean-square of all Z scores of the bond lengths (or angles).

Mol	Chain	Bond lengths		Bond angles	
		RMSZ	# Z >5	RMSZ	# Z >5
1	A	0.48	0/2318	0.59	0/3165

There are no bond length outliers.

There are no bond angle outliers.

There are no chirality outliers.

There are no planarity outliers.

5.2 Too-close contacts [i](#)

In the following table, the Non-H and H(model) columns list the number of non-hydrogen atoms and hydrogen atoms in the chain respectively. The H(added) column lists the number of hydrogen atoms added and optimized by MolProbity. The Clashes column lists the number of clashes within the asymmetric unit, whereas Symm-Clashes lists symmetry-related clashes.

Mol	Chain	Non-H	H(model)	H(added)	Clashes	Symm-Clashes
1	A	2264	0	2413	20	0
2	A	2	0	0	0	0
3	A	57	0	74	5	0
4	A	60	0	106	3	0
5	A	74	0	97	3	0
6	A	26	0	0	0	0
All	All	2483	0	2690	22	0

The all-atom clashscore is defined as the number of clashes found per 1000 atoms (including hydrogen atoms). The all-atom clashscore for this structure is 4.

All (22) close contacts within the same asymmetric unit are listed below, sorted by their clash magnitude.

Atom-1	Atom-2	Interatomic distance (Å)	Clash overlap (Å)
1:A:122:ARG:HH21	5:A:1320:PTY:HN12	1.38	0.71
1:A:41:PRO:HG2	4:A:1316:LDA:HM12	1.73	0.70
1:A:184:LEU:HB2	1:A:188:THR:HG23	1.81	0.63
1:A:173:PRO:HG3	4:A:1316:LDA:H81	1.81	0.63
4:A:1314:LDA:H52	4:A:1317:LDA:H31	1.82	0.61
1:A:116:VAL:HG11	3:A:1312:TCH:H22	1.83	0.60
1:A:118:THR:HG23	1:A:256:THR:HG22	1.86	0.58
1:A:118:THR:CG2	1:A:256:THR:HG22	2.41	0.50
1:A:252:ASP:O	1:A:256:THR:HG23	2.11	0.49
1:A:203:ILE:HG21	3:A:1312:TCH:H6A	1.97	0.46
1:A:69:VAL:HG21	3:A:1313:TCH:H2	1.97	0.45
1:A:162:MET:HG2	1:A:272:LEU:HD22	1.98	0.45
1:A:67:PRO:O	1:A:71:ILE:HG12	2.17	0.44
1:A:55:LEU:HB3	1:A:178:LEU:HD13	1.99	0.44
1:A:303:THR:HG23	5:A:1320:PTY:HC6	2.00	0.44
3:A:1313:TCH:H8	3:A:1313:TCH:H19	1.80	0.42
1:A:15:PHE:CE2	3:A:1312:TCH:H7	2.56	0.41
1:A:303:THR:CG2	5:A:1320:PTY:HC6	2.50	0.41
1:A:85:ALA:HB2	1:A:232:HIS:CE1	2.56	0.41
1:A:172:LEU:HB3	1:A:173:PRO:HD3	2.03	0.41
1:A:142:LEU:HD22	1:A:146:ILE:HD11	2.03	0.41
1:A:120:LEU:O	1:A:306:ALA:HB2	2.21	0.40

There are no symmetry-related clashes.

5.3 Torsion angles [i](#)

5.3.1 Protein backbone [i](#)

In the following table, the Percentiles column shows the percent Ramachandran outliers of the chain as a percentile score with respect to all X-ray entries followed by that with respect to entries of similar resolution.

The Analysed column shows the number of residues for which the backbone conformation was analysed, and the total number of residues.

Mol	Chain	Analysed	Favoured	Allowed	Outliers	Percentiles
1	A	306/323 (95%)	304 (99%)	2 (1%)	0	100 100

There are no Ramachandran outliers to report.

5.3.2 Protein sidechains [i](#)

In the following table, the Percentiles column shows the percent sidechain outliers of the chain as a percentile score with respect to all X-ray entries followed by that with respect to entries of similar resolution.

The Analysed column shows the number of residues for which the sidechain conformation was analysed, and the total number of residues.

Mol	Chain	Analysed	Rotameric	Outliers	Percentiles
1	A	235/248 (95%)	234 (100%)	1 (0%)	91 96

All (1) residues with a non-rotameric sidechain are listed below:

Mol	Chain	Res	Type
1	A	294	HIS

Sometimes sidechains can be flipped to improve hydrogen bonding and reduce clashes. There are no such sidechains identified.

5.3.3 RNA [i](#)

There are no RNA molecules in this entry.

5.4 Non-standard residues in protein, DNA, RNA chains [i](#)

There are no non-standard protein/DNA/RNA residues in this entry.

5.5 Carbohydrates [i](#)

There are no monosaccharides in this entry.

5.6 Ligand geometry [i](#)

Of 11 ligands modelled in this entry, 2 are monoatomic - leaving 9 for Mogul analysis.

In the following table, the Counts columns list the number of bonds (or angles) for which Mogul statistics could be retrieved, the number of bonds (or angles) that are observed in the model and the number of bonds (or angles) that are defined in the Chemical Component Dictionary. The Link column lists molecule types, if any, to which the group is linked. The Z score for a bond length (or angle) is the number of standard deviations the observed value is removed from the expected value. A bond length (or angle) with $|Z| > 2$ is considered an outlier worth inspection. RMSZ is the root-mean-square of all Z scores of the bond lengths (or angles).

Mol	Type	Chain	Res	Link	Bond lengths			Bond angles		
					Counts	RMSZ	# Z > 2	Counts	RMSZ	# Z > 2
5	PTY	A	1319	-	33,33,49	1.35	5 (15%)	36,38,54	2.28	10 (27%)
4	LDA	A	1318	-	8,8,15	0.34	0	7,7,17	0.87	0
3	TCH	A	1312	-	38,38,38	0.99	2 (5%)	59,60,60	1.74	12 (20%)
4	LDA	A	1314	-	6,9,15	0.84	0	8,11,17	0.79	0
4	LDA	A	1316	-	12,15,15	0.84	1 (8%)	14,17,17	0.76	0
3	TCH	A	1313	-	25,25,38	0.76	0	37,41,60	1.59	9 (24%)
4	LDA	A	1315	-	12,15,15	0.76	1 (8%)	14,17,17	0.80	0
5	PTY	A	1320	-	39,39,49	1.30	4 (10%)	42,44,54	2.07	14 (33%)
4	LDA	A	1317	-	5,8,15	1.08	1 (20%)	7,10,17	0.58	0

In the following table, the Chirals column lists the number of chiral outliers, the number of chiral centers analysed, the number of these observed in the model and the number defined in the Chemical Component Dictionary. Similar counts are reported in the Torsion and Rings columns. '-' means no outliers of that kind were identified.

Mol	Type	Chain	Res	Link	Chirals	Torsions	Rings
5	PTY	A	1319	-	-	20/37/37/53	-
4	LDA	A	1318	-	-	2/6/6/13	-
3	TCH	A	1312	-	-	2/16/81/81	0/4/4/4
4	LDA	A	1314	-	-	2/7/7/13	-
4	LDA	A	1316	-	-	5/13/13/13	-
3	TCH	A	1313	-	-	-	0/4/4/4
4	LDA	A	1315	-	-	7/13/13/13	-
5	PTY	A	1320	-	-	26/43/43/53	-
4	LDA	A	1317	-	-	2/6/6/13	-

All (14) bond length outliers are listed below:

Mol	Chain	Res	Type	Atoms	Z	Observed(Å)	Ideal(Å)
5	A	1320	PTY	O4-C1	-3.83	1.36	1.45
5	A	1320	PTY	P1-O13	3.78	1.64	1.50
5	A	1319	PTY	O4-C1	-3.48	1.37	1.45
3	A	1312	TCH	C26-S26	3.43	1.82	1.77
5	A	1319	PTY	P1-O13	3.32	1.62	1.50
3	A	1312	TCH	O1S-S26	2.64	1.52	1.45
4	A	1316	LDA	O1-N1	2.47	1.47	1.42
5	A	1319	PTY	O30-C30	-2.44	1.15	1.22
5	A	1320	PTY	O30-C30	-2.42	1.15	1.22
5	A	1319	PTY	P1-O14	2.36	1.68	1.59

Continued on next page...

Continued from previous page...

Mol	Chain	Res	Type	Atoms	Z	Observed(Å)	Ideal(Å)
4	A	1317	LDA	O1-N1	2.28	1.47	1.42
4	A	1315	LDA	O1-N1	2.23	1.47	1.42
5	A	1320	PTY	P1-O14	2.18	1.68	1.59
5	A	1319	PTY	O7-C8	2.09	1.40	1.34

All (45) bond angle outliers are listed below:

Mol	Chain	Res	Type	Atoms	Z	Observed(°)	Ideal(°)
5	A	1319	PTY	C6-O7-C8	7.41	136.04	117.79
5	A	1320	PTY	C6-O7-C8	5.87	132.25	117.79
5	A	1319	PTY	O4-C30-O30	-5.24	110.38	123.59
5	A	1320	PTY	O4-C30-O30	-4.97	111.06	123.59
3	A	1312	TCH	O3S-S26-O2S	4.89	123.22	111.27
3	A	1312	TCH	O2S-S26-C26	4.08	111.82	106.92
3	A	1312	TCH	O3S-S26-O1S	-4.07	101.33	111.27
3	A	1312	TCH	O3S-S26-C26	3.86	112.02	105.77
5	A	1320	PTY	O7-C8-O10	-3.79	114.53	123.70
5	A	1319	PTY	O4-C30-C31	3.65	123.36	111.91
5	A	1319	PTY	O7-C8-C11	3.59	119.25	111.50
3	A	1312	TCH	O2S-S26-O1S	-3.57	101.58	113.95
5	A	1320	PTY	O7-C6-C5	3.48	121.02	108.40
3	A	1313	TCH	C19-C10-C1	-3.45	102.70	108.26
5	A	1319	PTY	O7-C8-O10	-3.37	115.57	123.70
3	A	1313	TCH	C10-C9-C8	-3.34	108.23	111.82
5	A	1319	PTY	O7-C6-C5	3.33	120.45	108.40
3	A	1313	TCH	C1-C2-C3	3.33	114.74	110.47
5	A	1320	PTY	O7-C8-C11	3.30	118.61	111.50
3	A	1313	TCH	C19-C10-C9	-3.17	106.82	111.18
5	A	1320	PTY	O12-P1-O13	-3.12	96.83	112.24
5	A	1319	PTY	O12-P1-O13	-3.11	96.88	112.24
5	A	1320	PTY	C40-C39-C38	-3.09	98.73	114.42
5	A	1320	PTY	O4-C30-C31	2.88	120.94	111.91
3	A	1312	TCH	C13-C17-C20	-2.82	116.13	119.50
3	A	1312	TCH	C23-C22-C20	-2.80	109.40	114.52
3	A	1313	TCH	C11-C9-C8	2.80	114.97	110.88
3	A	1312	TCH	O1S-S26-C26	-2.78	103.57	106.92
3	A	1313	TCH	C1-C10-C9	2.55	115.36	111.35
5	A	1320	PTY	C36-C35-C34	-2.41	102.19	114.42
5	A	1320	PTY	O12-P1-O14	2.39	118.86	107.75
3	A	1312	TCH	O7-C7-C8	2.39	114.77	109.43
5	A	1319	PTY	O12-P1-O14	2.36	118.73	107.75
5	A	1319	PTY	O4-C1-C6	2.34	115.24	108.43

Continued on next page...

Continued from previous page...

Mol	Chain	Res	Type	Atoms	Z	Observed(°)	Ideal(°)
5	A	1320	PTY	C13-C12-C11	-2.34	104.79	113.19
5	A	1320	PTY	C17-C16-C15	2.32	126.20	114.42
3	A	1313	TCH	C9-C8-C7	-2.31	109.11	111.88
3	A	1312	TCH	C9-C10-C5	2.28	111.79	108.58
3	A	1313	TCH	C14-C8-C9	2.14	112.65	109.71
5	A	1319	PTY	C33-C32-C31	-2.12	105.56	113.19
5	A	1320	PTY	C33-C32-C31	-2.12	105.57	113.19
3	A	1312	TCH	C5-C4-C3	-2.11	109.66	112.76
3	A	1312	TCH	C13-C14-C8	-2.05	112.12	114.74
5	A	1320	PTY	O11-C3-C2	-2.03	101.49	109.10
3	A	1313	TCH	C1-C10-C5	2.03	110.77	107.77

There are no chirality outliers.

All (66) torsion outliers are listed below:

Mol	Chain	Res	Type	Atoms
3	A	1312	TCH	C25-C26-S26-O1S
3	A	1312	TCH	C25-C26-S26-O2S
4	A	1315	LDA	N1-C1-C2-C3
5	A	1320	PTY	C3-O11-P1-O12
5	A	1320	PTY	C3-O11-P1-O13
5	A	1320	PTY	C3-O11-P1-O14
5	A	1319	PTY	O30-C30-O4-C1
5	A	1319	PTY	C31-C30-O4-C1
5	A	1320	PTY	C31-C30-O4-C1
5	A	1320	PTY	O30-C30-O4-C1
5	A	1320	PTY	C5-O14-P1-O11
5	A	1320	PTY	C12-C13-C14-C15
5	A	1320	PTY	C15-C16-C17-C18
4	A	1314	LDA	C2-C3-C4-C5
4	A	1315	LDA	C7-C8-C9-C10
4	A	1316	LDA	C11-C10-C9-C8
5	A	1320	PTY	C11-C8-O7-C6
5	A	1320	PTY	C36-C37-C38-C39
5	A	1319	PTY	C33-C34-C35-C36
5	A	1320	PTY	O10-C8-O7-C6
5	A	1319	PTY	C15-C16-C17-C18
5	A	1319	PTY	C11-C8-O7-C6
4	A	1315	LDA	C3-C4-C5-C6
5	A	1319	PTY	O10-C8-O7-C6
4	A	1316	LDA	C3-C4-C5-C6
5	A	1319	PTY	C32-C33-C34-C35

Continued on next page...

Continued from previous page...

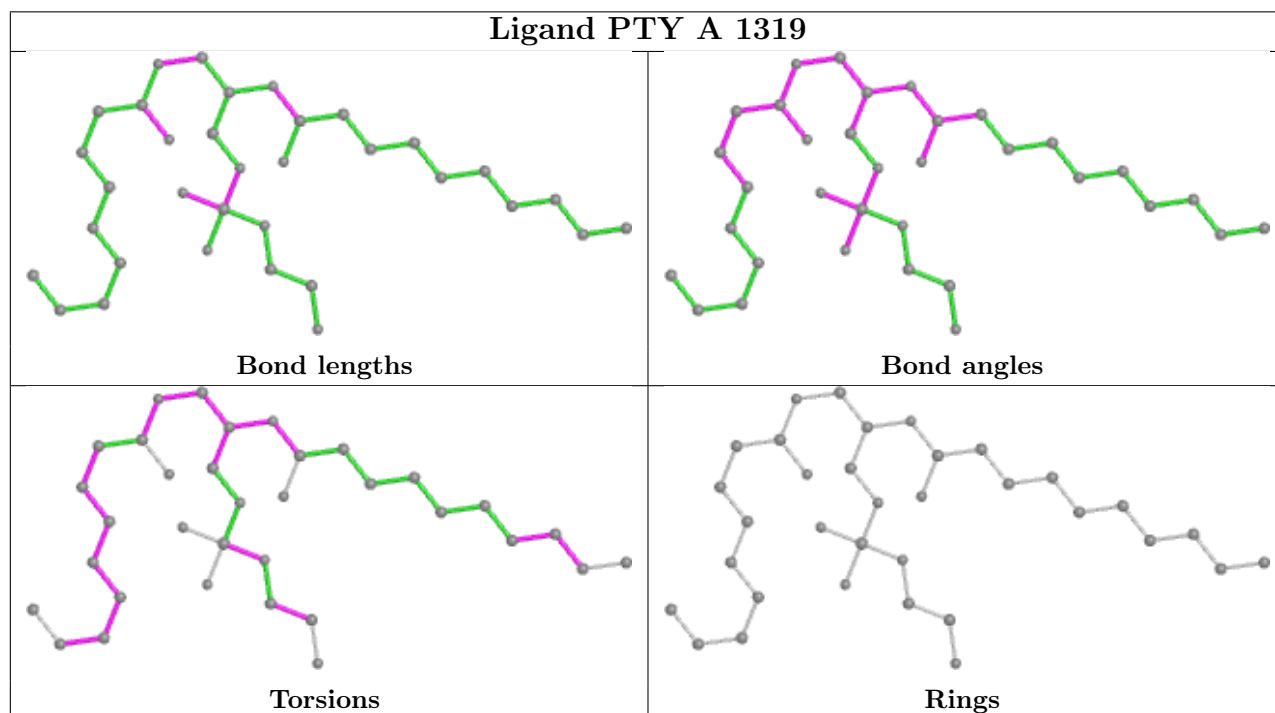
Mol	Chain	Res	Type	Atoms
5	A	1320	PTY	C32-C33-C34-C35
5	A	1319	PTY	O14-C5-C6-C1
5	A	1319	PTY	O4-C1-C6-C5
4	A	1315	LDA	C2-C3-C4-C5
4	A	1317	LDA	C2-C3-C4-C5
5	A	1319	PTY	C30-C31-C32-C33
4	A	1315	LDA	C4-C5-C6-C7
4	A	1317	LDA	C1-C2-C3-C4
4	A	1316	LDA	N1-C1-C2-C3
5	A	1320	PTY	N1-C2-C3-O11
5	A	1319	PTY	O14-C5-C6-O7
5	A	1320	PTY	C16-C17-C18-C19
5	A	1320	PTY	C6-C5-O14-P1
5	A	1320	PTY	C41-C42-C43-C44
5	A	1320	PTY	C34-C35-C36-C37
4	A	1315	LDA	C11-C10-C9-C8
5	A	1320	PTY	C35-C36-C37-C38
5	A	1319	PTY	C3-O11-P1-O14
5	A	1320	PTY	C13-C14-C15-C16
5	A	1320	PTY	C8-C11-C12-C13
5	A	1320	PTY	C33-C34-C35-C36
5	A	1319	PTY	C34-C35-C36-C37
5	A	1319	PTY	O4-C1-C6-O7
5	A	1320	PTY	O4-C1-C6-O7
4	A	1316	LDA	C6-C7-C8-C9
4	A	1318	LDA	C4-C5-C6-C7
5	A	1319	PTY	C5-C6-O7-C8
4	A	1318	LDA	C2-C3-C4-C5
5	A	1319	PTY	C35-C36-C37-C38
4	A	1315	LDA	C5-C6-C7-C8
5	A	1319	PTY	N1-C2-C3-O11
4	A	1314	LDA	C3-C4-C5-C6
5	A	1320	PTY	C5-C6-O7-C8
5	A	1319	PTY	C6-C1-O4-C30
5	A	1320	PTY	C39-C40-C41-C42
5	A	1320	PTY	C37-C38-C39-C40
5	A	1319	PTY	C31-C32-C33-C34
5	A	1320	PTY	C14-C15-C16-C17
5	A	1319	PTY	C16-C17-C18-C19
4	A	1316	LDA	C9-C10-C11-C12

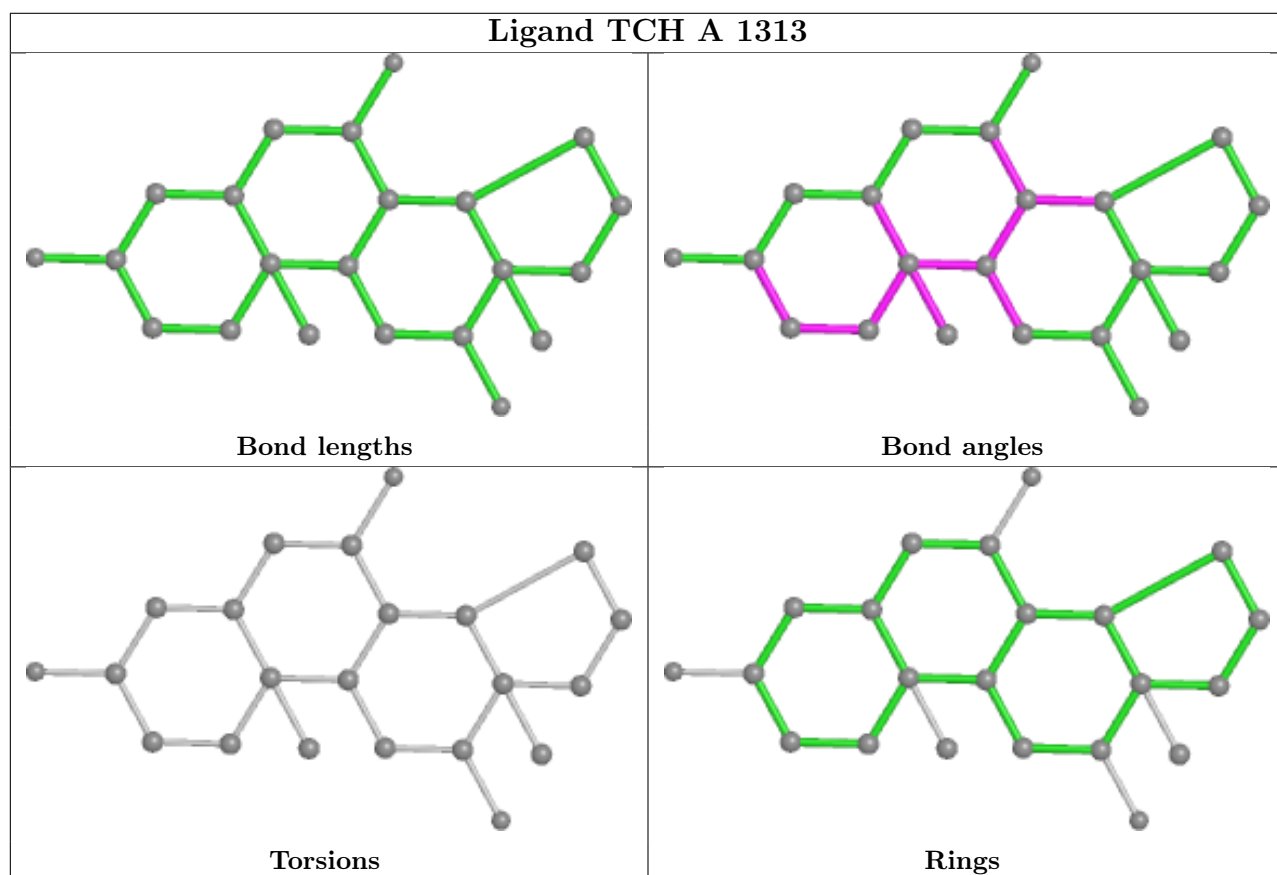
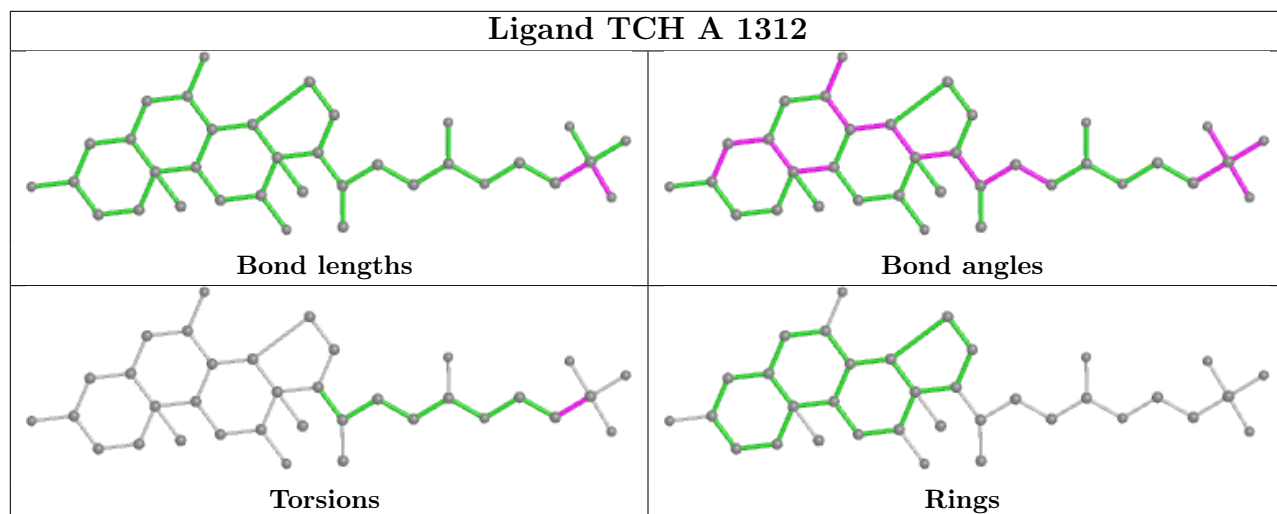
There are no ring outliers.

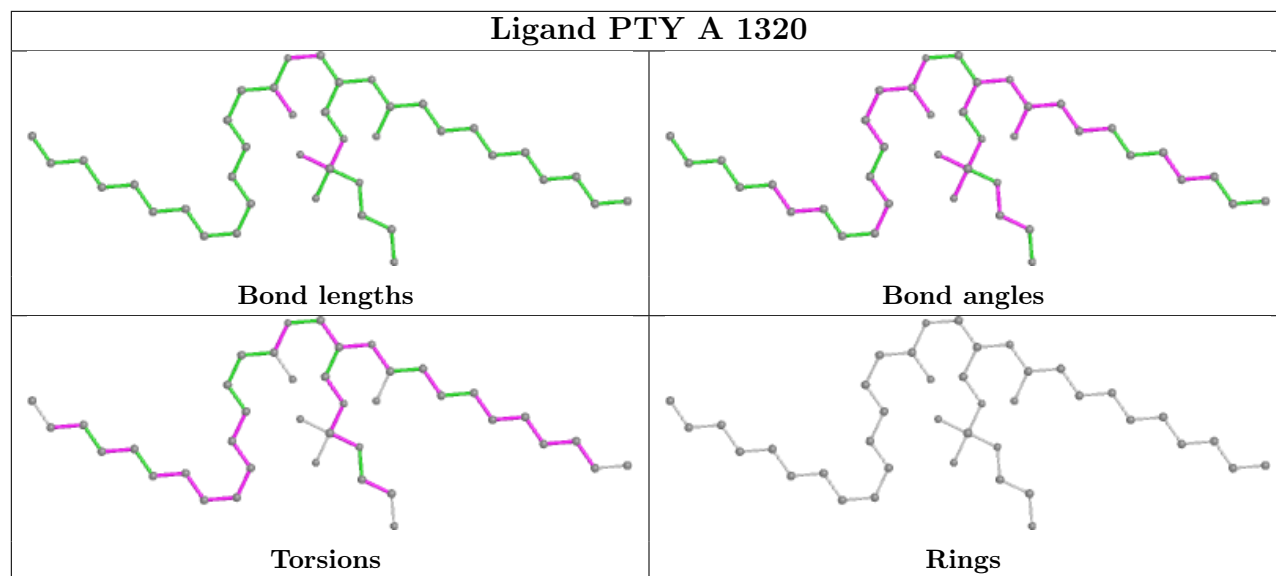
6 monomers are involved in 11 short contacts:

Mol	Chain	Res	Type	Clashes	Symm-Clashes
3	A	1312	TCH	3	0
4	A	1314	LDA	1	0
4	A	1316	LDA	2	0
3	A	1313	TCH	2	0
5	A	1320	PTY	3	0
4	A	1317	LDA	1	0

The following is a two-dimensional graphical depiction of Mogul quality analysis of bond lengths, bond angles, torsion angles, and ring geometry for all instances of the Ligand of Interest. In addition, ligands with molecular weight > 250 and outliers as shown on the validation Tables will also be included. For torsion angles, if less than 5% of the Mogul distribution of torsion angles is within 10 degrees of the torsion angle in question, then that torsion angle is considered an outlier. Any bond that is central to one or more torsion angles identified as an outlier by Mogul will be highlighted in the graph. For rings, the root-mean-square deviation (RMSD) between the ring in question and similar rings identified by Mogul is calculated over all ring torsion angles. If the average RMSD is greater than 60 degrees and the minimal RMSD between the ring in question and any Mogul-identified rings is also greater than 60 degrees, then that ring is considered an outlier. The outliers are highlighted in purple. The color gray indicates Mogul did not find sufficient equivalents in the CSD to analyse the geometry.







5.7 Other polymers [i](#)

There are no such residues in this entry.

5.8 Polymer linkage issues [i](#)

There are no chain breaks in this entry.

6 Fit of model and data

6.1 Protein, DNA and RNA chains

In the following table, the column labelled ‘#RSRZ> 2’ contains the number (and percentage) of RSRZ outliers, followed by percent RSRZ outliers for the chain as percentile scores relative to all X-ray entries and entries of similar resolution. The OWAB column contains the minimum, median, 95th percentile and maximum values of the occupancy-weighted average B-factor per residue. The column labelled ‘Q< 0.9’ lists the number of (and percentage) of residues with an average occupancy less than 0.9.

Mol	Chain	Analysed	<RSRZ>	#RSRZ>2	OWAB(Å ²)	Q<0.9
1	A	308/323 (95%)	0.33	29 (9%) 8 7	35, 56, 97, 185	0

All (29) RSRZ outliers are listed below:

Mol	Chain	Res	Type	RSRZ
1	A	3	ILE	11.9
1	A	4	LEU	9.3
1	A	2	ASN	6.7
1	A	28	PHE	6.0
1	A	309	ALA	5.4
1	A	5	SER	4.8
1	A	7	ILE	4.8
1	A	183	VAL	4.8
1	A	6	LYS	4.5
1	A	91	LEU	4.2
1	A	246	TRP	3.7
1	A	184	LEU	3.5
1	A	190	LYS	3.2
1	A	195	LEU	3.2
1	A	122	ARG	3.1
1	A	186	SER	3.1
1	A	193	ASP	3.0
1	A	188	THR	2.8
1	A	32	THR	2.6
1	A	187	LYS	2.6
1	A	42	TRP	2.6
1	A	258	THR	2.5
1	A	119	TYR	2.5
1	A	86	TRP	2.4
1	A	242	PHE	2.3
1	A	197	LEU	2.2
1	A	189	GLU	2.2

Continued on next page...

Continued from previous page...

Mol	Chain	Res	Type	RSRZ
1	A	251	TYR	2.1
1	A	31	ASP	2.1

6.2 Non-standard residues in protein, DNA, RNA chains [i](#)

There are no non-standard protein/DNA/RNA residues in this entry.

6.3 Carbohydrates [i](#)

There are no monosaccharides in this entry.

6.4 Ligands [i](#)

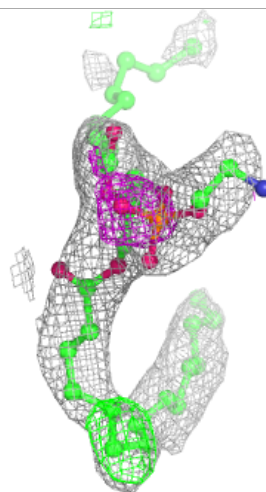
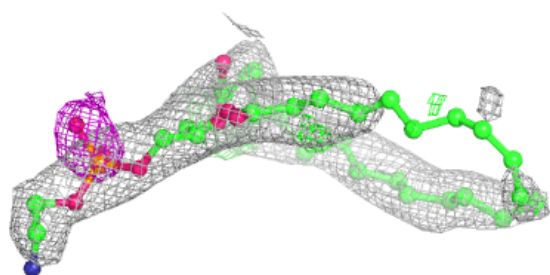
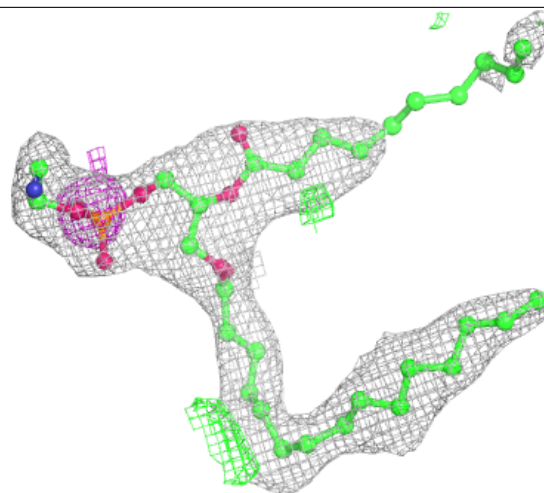
In the following table, the Atoms column lists the number of modelled atoms in the group and the number defined in the chemical component dictionary. The B-factors column lists the minimum, median, 95th percentile and maximum values of B factors of atoms in the group. The column labelled 'Q < 0.9' lists the number of atoms with occupancy less than 0.9.

Mol	Type	Chain	Res	Atoms	RSCC	RSR	B-factors(Å ²)	Q < 0.9
4	LDA	A	1315	16/16	0.49	0.29	72,73,77,78	0
5	PTY	A	1320	40/50	0.70	0.24	75,87,103,104	0
3	TCH	A	1312	35/35	0.72	0.37	74,98,146,183	0
4	LDA	A	1314	10/16	0.74	0.29	87,89,91,91	0
5	PTY	A	1319	34/50	0.75	0.35	91,97,107,107	0
4	LDA	A	1318	9/16	0.80	0.18	68,68,69,69	0
4	LDA	A	1316	16/16	0.83	0.23	72,73,77,77	0
4	LDA	A	1317	9/16	0.84	0.29	99,100,102,103	0
3	TCH	A	1313	22/35	0.89	0.18	78,92,114,117	0
2	NA	A	1310	1/1	0.94	0.10	46,46,46,46	0
2	NA	A	1311	1/1	0.98	0.07	40,40,40,40	0

The following is a graphical depiction of the model fit to experimental electron density of all instances of the Ligand of Interest. In addition, ligands with molecular weight > 250 and outliers as shown on the geometry validation Tables will also be included. Each fit is shown from different orientation to approximate a three-dimensional view.

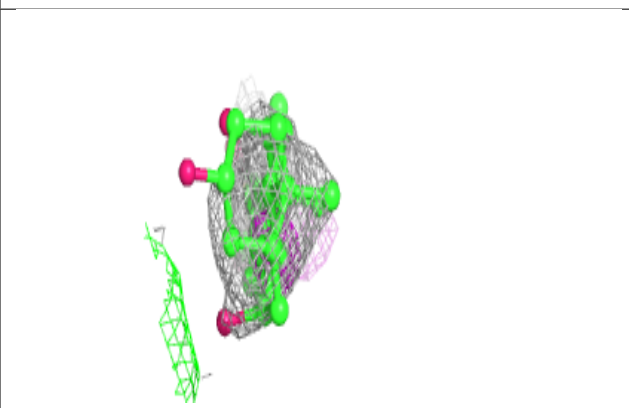
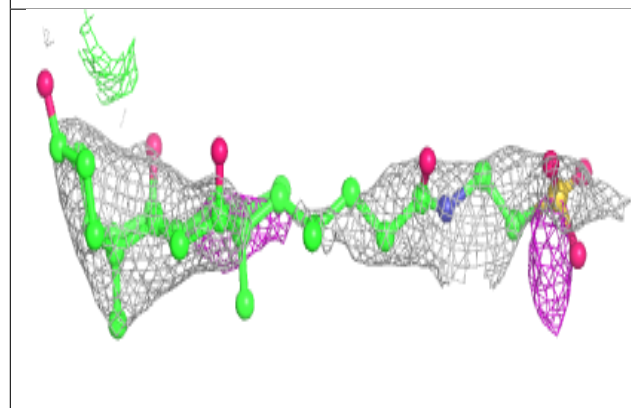
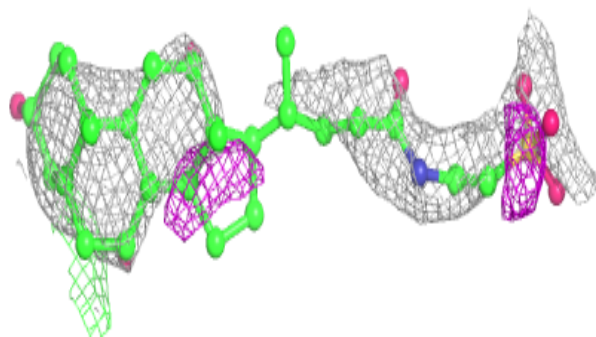
Electron density around PTY A 1320:

$2mF_o-DF_c$ (at 0.7 rmsd) in gray
 mF_o-DF_c (at 3 rmsd) in purple (negative)
and green (positive)

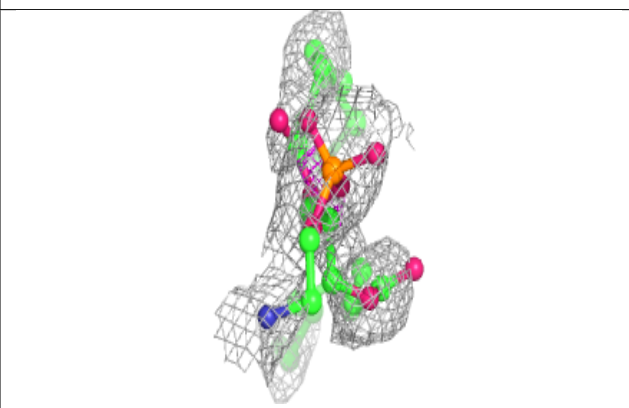
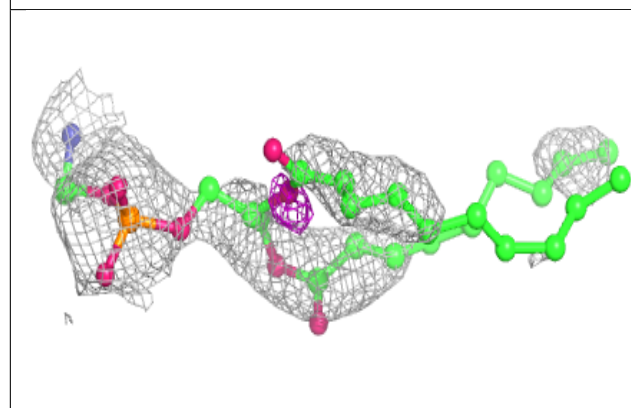
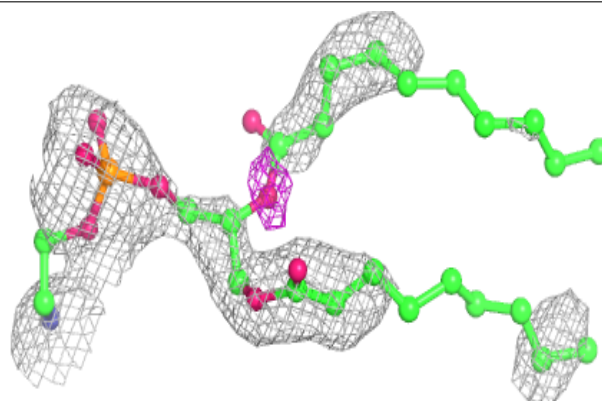


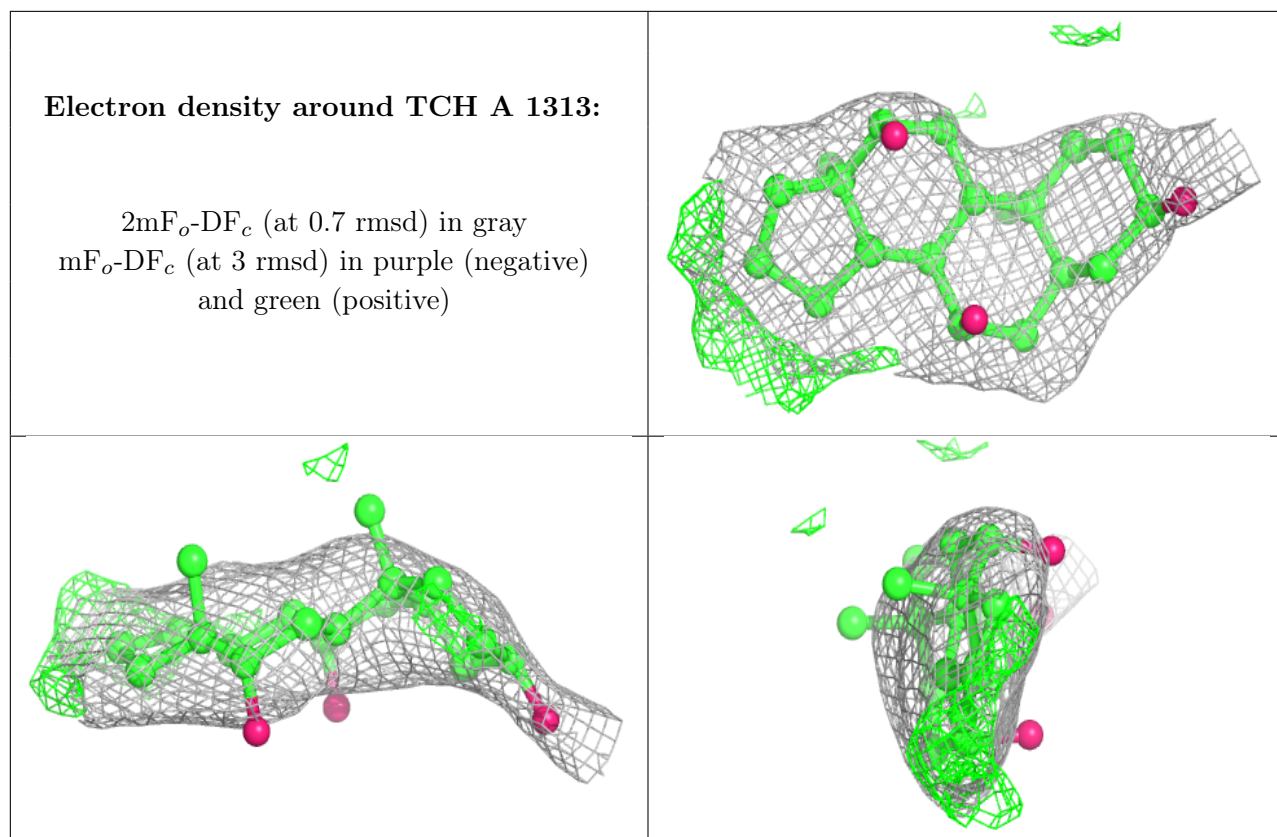
Electron density around TCH A 1312:

$2mF_o-DF_c$ (at 0.7 rmsd) in gray
 mF_o-DF_c (at 3 rmsd) in purple (negative)
and green (positive)

**Electron density around PTY A 1319:**

$2mF_o-DF_c$ (at 0.7 rmsd) in gray
 mF_o-DF_c (at 3 rmsd) in purple (negative)
and green (positive)





6.5 Other polymers [i](#)

There are no such residues in this entry.