



Full wwPDB EM Validation Report ⓘ

Dec 18, 2022 – 01:34 am GMT

PDB ID : 6ZWM
EMDB ID : EMD-11488
Title : cryo-EM structure of human mTOR complex 2, overall refinement
Authors : Scaiola, A.; Mangia, F.; Inseng, S.; Boehringer, D.; Ban, N.; Maier, T.
Deposited on : 2020-07-28
Resolution : 3.20 Å (reported)

This is a Full wwPDB EM Validation Report for a publicly released PDB entry.

We welcome your comments at validation@mail.wwpdb.org

A user guide is available at

<https://www.wwpdb.org/validation/2017/EMValidationReportHelp>

with specific help available everywhere you see the ⓘ symbol.

The types of validation reports are described at

<http://www.wwpdb.org/validation/2017/FAQs#types>.

The following versions of software and data (see [references ⓘ](#)) were used in the production of this report:

EMDB validation analysis : 0.0.1.dev43
Mogul : 1.8.4, CSD as541be (2020)
MolProbity : 4.02b-467
buster-report : 1.1.7 (2018)
Percentile statistics : 20191225.v01 (using entries in the PDB archive December 25th 2019)
MapQ : 1.9.9
Ideal geometry (proteins) : Engh & Huber (2001)
Ideal geometry (DNA, RNA) : Parkinson et al. (1996)
Validation Pipeline (wwPDB-VP) : 2.31.3

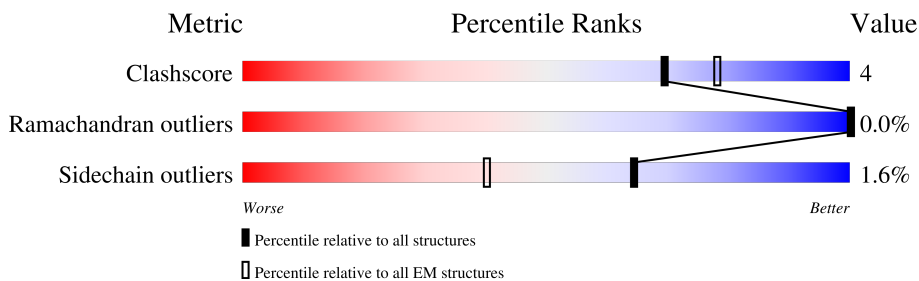
1 Overall quality at a glance

The following experimental techniques were used to determine the structure:

ELECTRON MICROSCOPY

The reported resolution of this entry is 3.20 Å.

Percentile scores (ranging between 0-100) for global validation metrics of the entry are shown in the following graphic. The table shows the number of entries on which the scores are based.



Metric	Whole archive (#Entries)	EM structures (#Entries)
Clashscore	158937	4297
Ramachandran outliers	154571	4023
Sidechain outliers	154315	3826

The table below summarises the geometric issues observed across the polymeric chains and their fit to the map. The red, orange, yellow and green segments of the bar indicate the fraction of residues that contain outliers for ≥ 3 , 2, 1 and 0 types of geometric quality criteria respectively. A grey segment represents the fraction of residues that are not modelled. The numeric value for each fraction is indicated below the corresponding segment, with a dot representing fractions $\leq 5\%$. The upper red bar (where present) indicates the fraction of residues that have poor fit to the EM map (all-atom inclusion $< 40\%$). The numeric value is given above the bar.

Mol	Chain	Length	Quality of chain
1	A	2549	
1	B	2549	
2	C	326	
2	D	326	
3	E	1708	
3	F	1708	
4	G	522	
4	H	522	

2 Entry composition [i](#)

There are 8 unique types of molecules in this entry. The entry contains 56947 atoms, of which 0 are hydrogens and 0 are deuteriums.

In the tables below, the AltConf column contains the number of residues with at least one atom in alternate conformation and the Trace column contains the number of residues modelled with at most 2 atoms.

- Molecule 1 is a protein called Serine/threonine-protein kinase mTOR.

Mol	Chain	Residues	Atoms					AltConf	Trace
			Total	C	N	O	S		
1	A	2184	Total	C	N	O	S	0	0
			16337	10356	2906	2977	98		
1	B	2185	Total	C	N	O	S	0	0
			16304	10330	2904	2972	98		

- Molecule 2 is a protein called Target of rapamycin complex subunit LST8.

Mol	Chain	Residues	Atoms					AltConf	Trace
			Total	C	N	O	S		
2	C	319	Total	C	N	O	S	0	0
			2465	1533	437	477	18		
2	D	319	Total	C	N	O	S	0	0
			2465	1533	437	477	18		

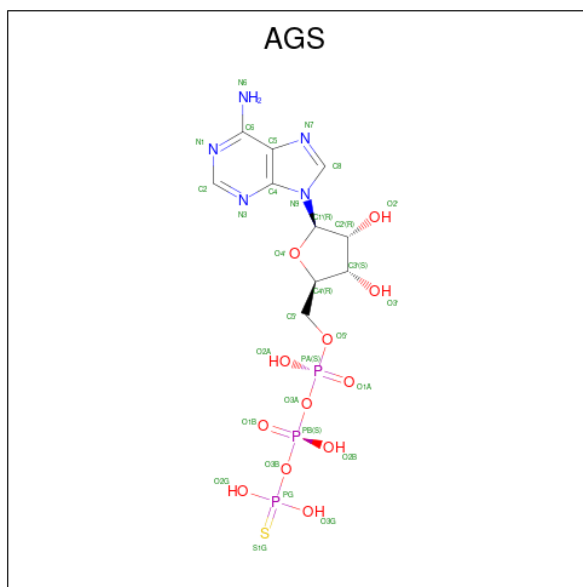
- Molecule 3 is a protein called Rapamycin-insensitive companion of mTOR.

Mol	Chain	Residues	Atoms					AltConf	Trace
			Total	C	N	O	S		
3	E	1117	Total	C	N	O	S	0	0
			8931	5689	1584	1611	47		
3	F	1117	Total	C	N	O	S	0	0
			8931	5689	1584	1611	47		

- Molecule 4 is a protein called Target of rapamycin complex 2 subunit MAPKAP1.

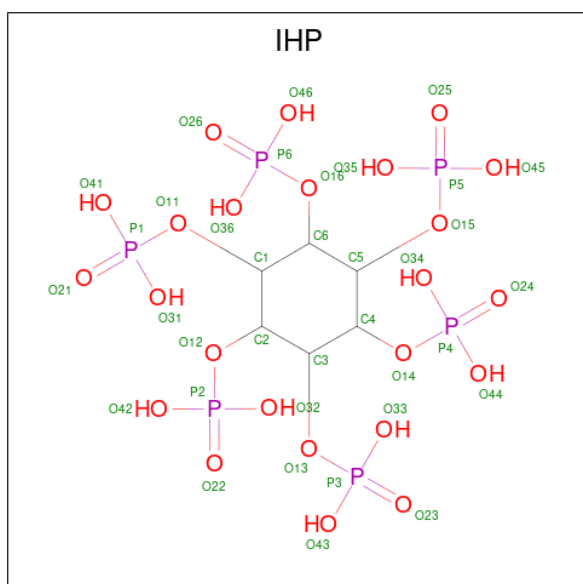
Mol	Chain	Residues	Atoms					AltConf	Trace
			Total	C	N	O	S		
4	G	98	Total	C	N	O	S	0	0
			655	399	125	127	4		
4	H	98	Total	C	N	O	S	0	0
			655	399	125	127	4		

- Molecule 5 is PHOSPHOTHIOPHOSPHORIC ACID-ADENYLATE ESTER (three-letter code: AGS) (formula: C₁₀H₁₆N₅O₁₂P₃S) (labeled as "Ligand of Interest" by depositor).



Mol	Chain	Residues	Atoms					AltConf	
			Total	C	N	O	P		S
5	A	1	Total	C	N	O	P	S	0
			31	10	5	12	3	1	
5	B	1	Total	C	N	O	P	S	0
			31	10	5	12	3	1	
5	E	1	Total	C	N	O	P	S	0
			31	10	5	12	3	1	
5	F	1	Total	C	N	O	P	S	0
			31	10	5	12	3	1	

- Molecule 6 is INOSITOL HEXAKISPHOSPHATE (three-letter code: IHP) (formula: $C_6H_{18}O_{24}P_6$) (labeled as "Ligand of Interest" by depositor).

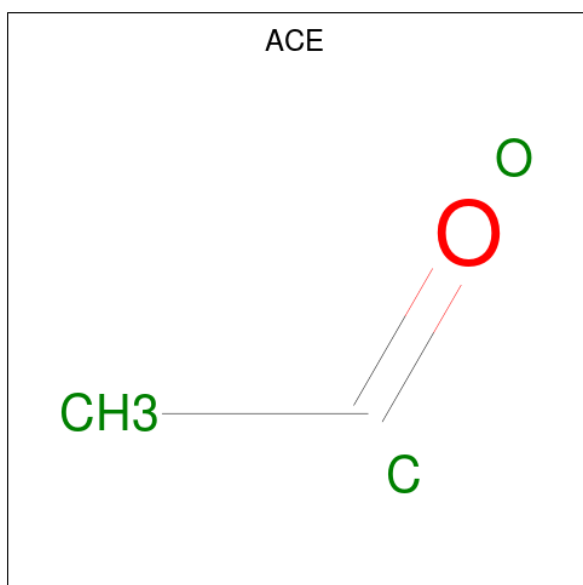


Mol	Chain	Residues	Atoms				AltConf
6	A	1	Total	C	O	P	0
			36	6	24	6	
6	B	1	Total	C	O	P	0
			36	6	24	6	

- Molecule 7 is ZINC ION (three-letter code: ZN) (formula: Zn).

Mol	Chain	Residues	Atoms		AltConf
7	E	1	Total	Zn	0
			1	1	
7	F	1	Total	Zn	0
			1	1	

- Molecule 8 is ACETYL GROUP (three-letter code: ACE) (formula: C₂H₄O).

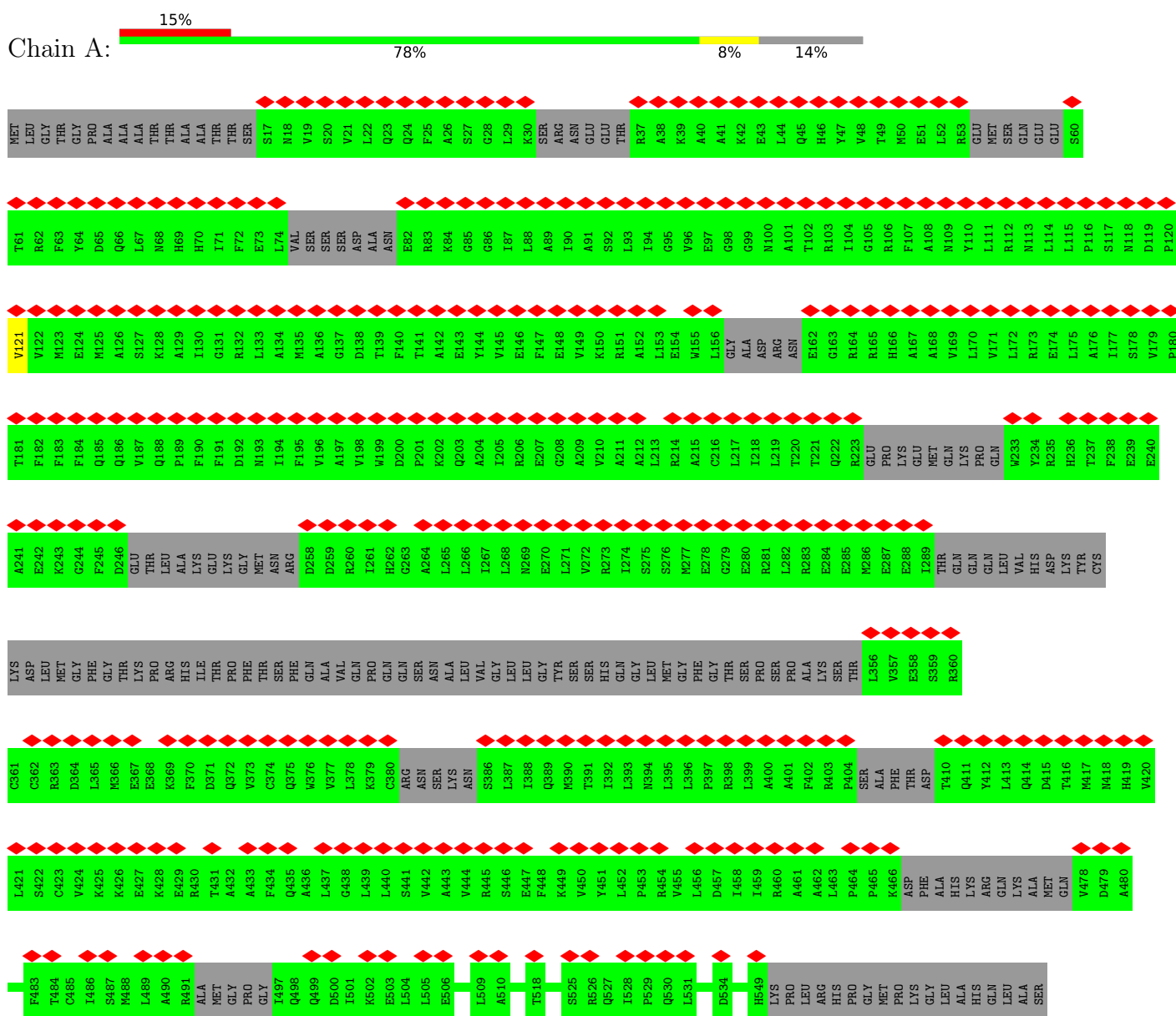


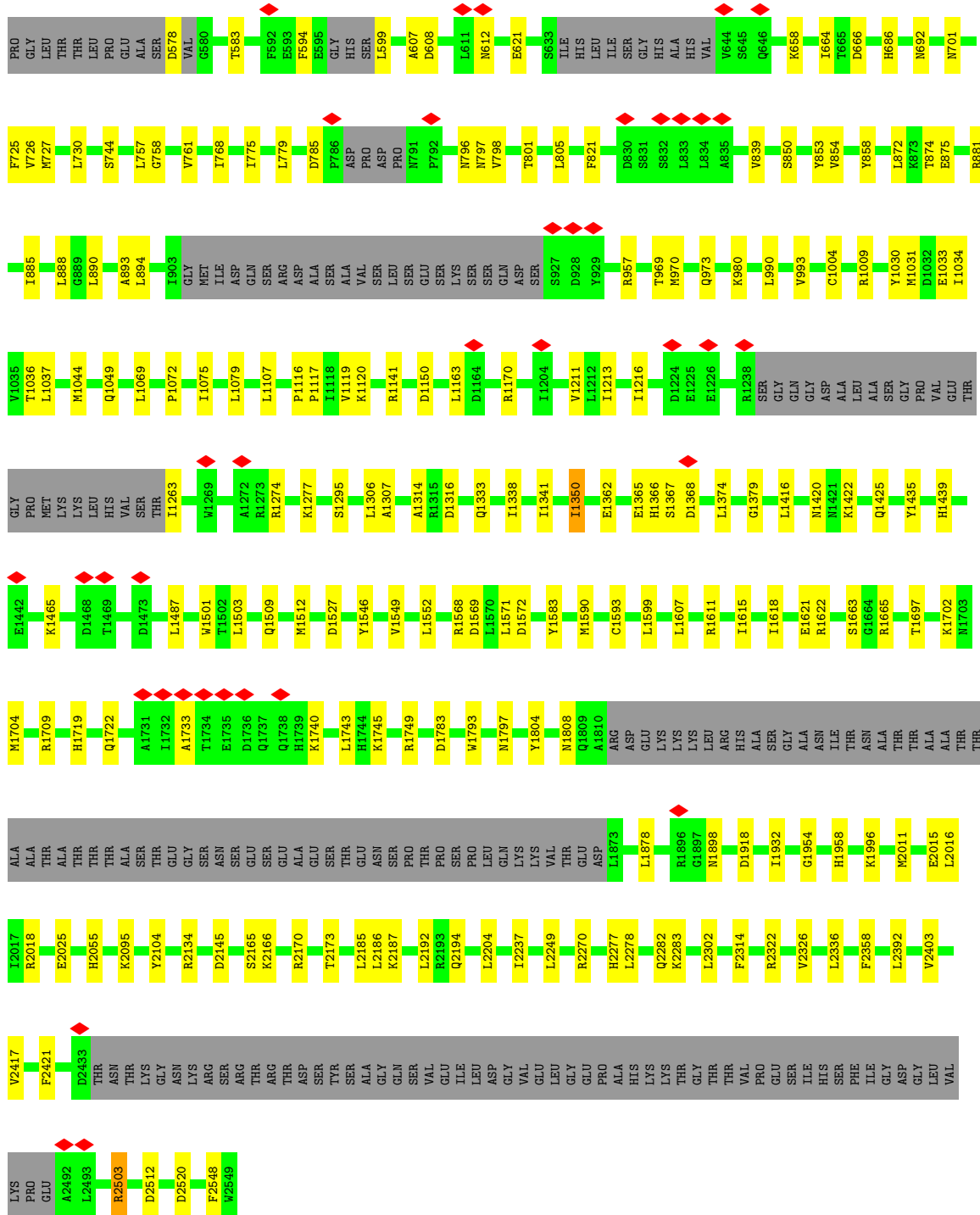
Mol	Chain	Residues	Atoms			AltConf
8	G	1	Total	C	O	0
			3	2	1	
8	H	1	Total	C	O	0
			3	2	1	

3 Residue-property plots

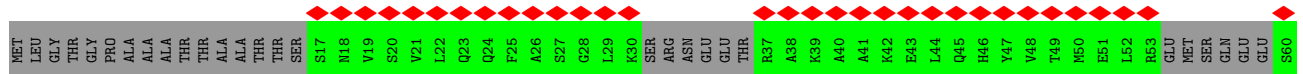
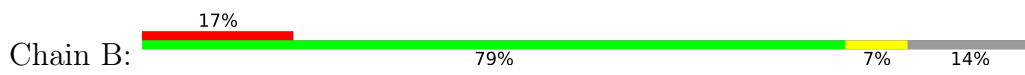
These plots are drawn for all protein, RNA, DNA and oligosaccharide chains in the entry. The first graphic for a chain summarises the proportions of the various outlier classes displayed in the second graphic. The second graphic shows the sequence view annotated by issues in geometry and atom inclusion in map density. Residues are color-coded according to the number of geometric quality criteria for which they contain at least one outlier: green = 0, yellow = 1, orange = 2 and red = 3 or more. A red diamond above a residue indicates a poor fit to the EM map for this residue (all-atom inclusion < 40%). Stretches of 2 or more consecutive residues without any outlier are shown as a green connector. Residues present in the sample, but not in the model, are shown in grey.

- Molecule 1: Serine/threonine-protein kinase mTOR

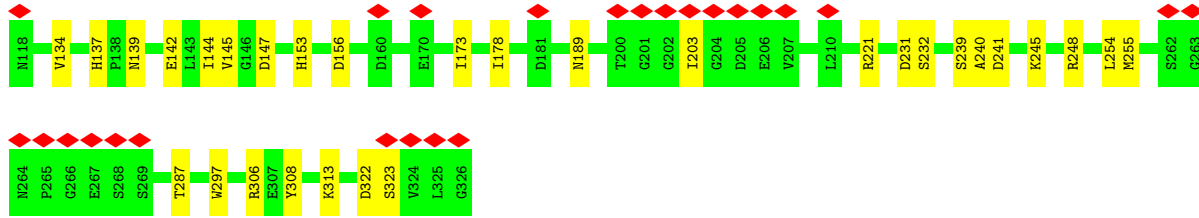




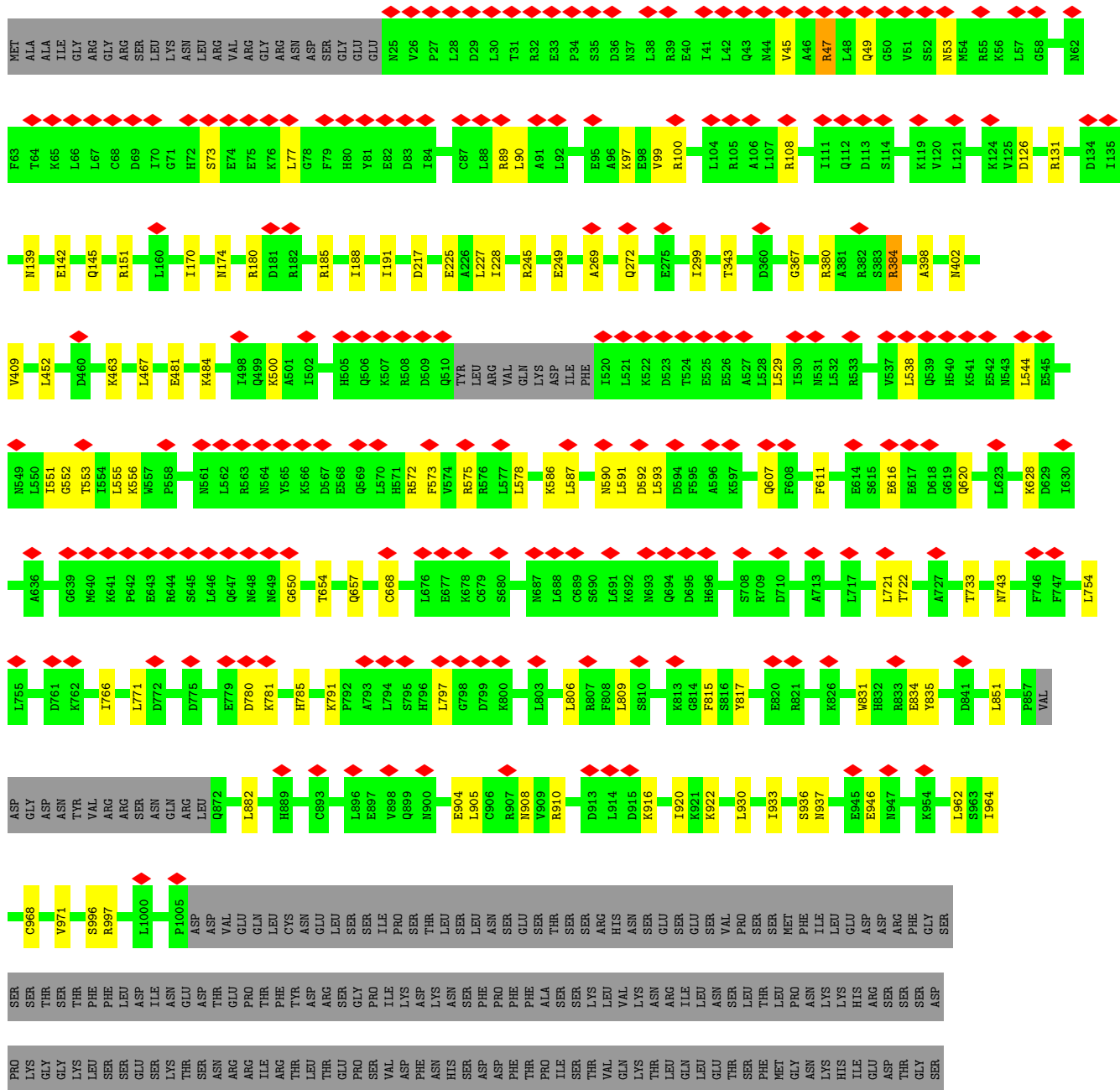
● Molecule 1: Serine/threonine-protein kinase mTOR

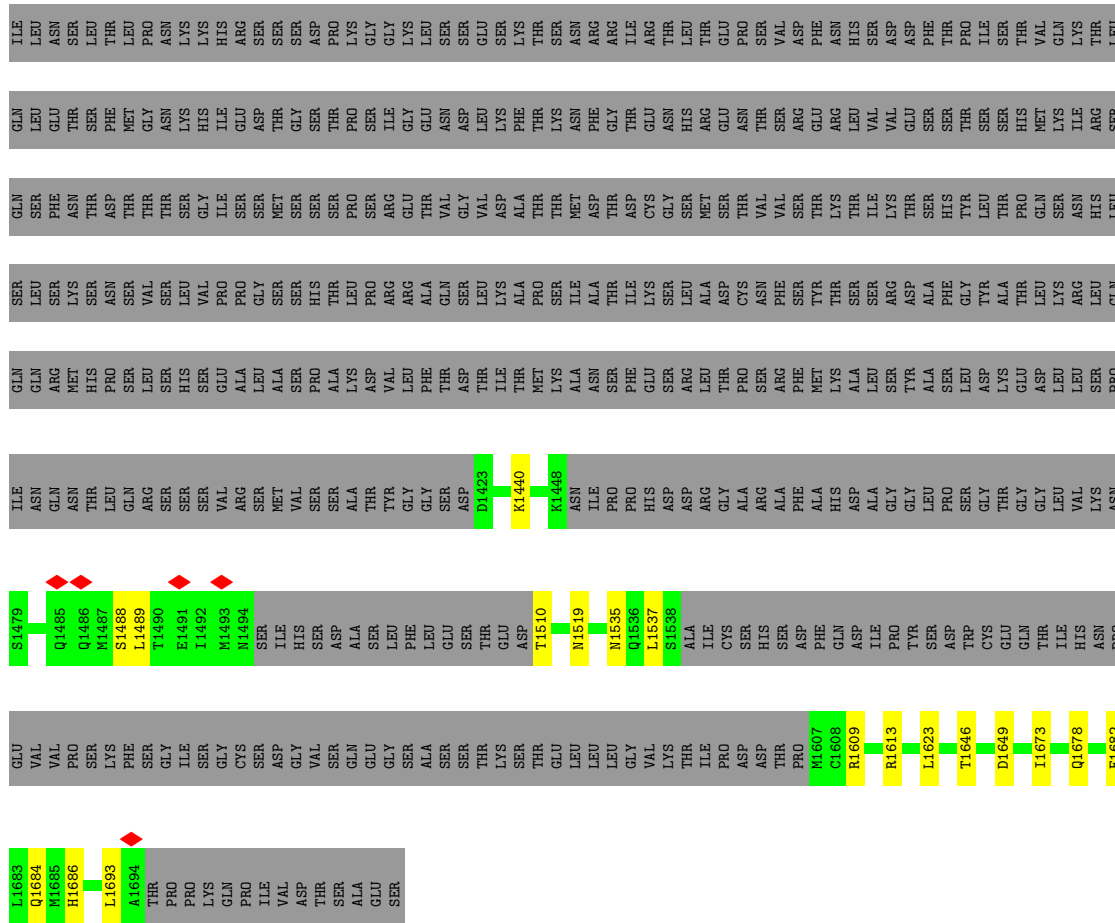


T61	R62	F63	Y64	D65	Q66	L67	N68	H69	H70	I71	F72	E73	L74	VAL	SER	SER	SER	SER	ASP	ASP	ALA	ASN	E82	R83	K84	G85	G86	I87	L88	A89	I90	A91	S92	L93	I94	G95	V96	E97	G98	G99	N100	A101	R103	I104	G105	R106	F107	A108	N109	Y110	L111	R112	N113	L114	L115	P116	S117	D119	P120												
V121	M122	E124	M125	A126	S127	K128	A129	I130	G131	R132	L133	A134	M135	A136	G137	D138	T139	F140	T141	A142	E143	Y144	V145	A146	F147	E148	A149	K150	R151	A152	L153	E154	W155	L156	GLY	ALA	ASP	ARG	ASN	E162	G163	R164	R165	H166	A167	A168	V169	L170	V171	L172	R173	E174	L175	A176	I177	S178	V179	P180													
T181	F182	F184	Q185	Q186	V187	Q188	P189	F190	F191	D192	N193	I194	F195	V196	A197	V198	W199	D200	P201	K202	Q203	A204	I205	R206	E207	G208	A209	V210	A211	A212	L213	R214	A215	C216	L217	I218	L219	T220	Q221	R222	R223	GLU	P280	L281	L282	R283	E284	E285	M286	E287	E288	I289	THR	GLN	GLN	GLN	LEU	VAL	HIS	ASP	LYS	TYR	CYS	W233	Y234	R235	H236	T237	F238	E239	E240
A241	E242	K243	G244	D245	D246	GLU	THR	LEU	ALA	LYS	GLU	LYS	GLY	MET	ASN	ARG	D258	D259	R260	I261	G263	A264	L265	L266	I267	L268	M269	E270	L271	V272	R273	I274	S275	S276	M277	E278	G279	E280	R281	L282	R283	E284	E285	M286	E287	E288	I289	THR	GLN	GLN	GLN	LEU	VAL	HIS	ASP	LYS	TYR	CYS	L356	V357	E358	S359	R360								
LYS	ASP	LEU	MET	GLY	PHE	GLY	THR	PRO	ARG	HIS	ILE	THR	PRO	PHE	THR	SER	PHE	GLN	ALA	VAL	GLN	ASN	ALA	LYS	VAL	GLY	LEU	LEU	GLY	TYR	SER	SER	HIS	GLN	GLY	LEU	MET	PHE	GLY	THR	THR	L356	V357	E358	S359	R360	L356	V357	E358	S359	R360	L356	V357	E358	S359	R360															
C361	C362	R363	D364	L365	M366	E367	E368	K369	F370	D371	Q372	V373	C374	Q375	M376	V377	L378	K379	ARG	ASN	LYS	ASN	S386	L387	I388	Q389	M390	T391	I392	L393	N394	L395	L396	P397	R398	L399	A400	A401	F402	R403	P404	SER	ALA	PHE	THR	ASP	T410	Q411	Y412	L413	Q414	D415	T416	M417	M418	H419	V420														
L421	S422	C423	V424	K425	K426	E427	K428	E429	R430	T431	A432	F433	Q435	A436	L437	G438	L439	L440	S441	V442	A443	V444	R445	S446	E447	F448	K449	V450	Y451	L452	P453	R454	V455	L456	D457	T458	I459	R460	A461	A462	L463	P464	P465	K466	ASP	PHE	ALA	HIS	LYS	ARG	GLN	LYS	ALA	MET	GLN	V478	D479	A480													
T481	V482	F483	T484	C485	I486	S487	M488	L489	A490	B491	ALA	MET	GLY	PRO	GLY	T497	Q498	Q499	D500	I501	K502	E503	L504	L505	E506	P507	M508	L509	A510	V511	G512	L513	S514	F515	T518	D523	L524	S525	A526	Q527	L528	P529	Q530	L531	K532	K533	D534	I535	G538	M542	L545	V546	L547	M548																	
H549	LYS	PRO	LEU	ARG	HIS	PRO	GLY	PRO	GLY	ALA	LYS	LEU	ALA	HIS	GLN	LEU	ALA	PRO	GLY	ALA	SER	D578	G590	S591	F592	E593	F594	S719	S720	P723	L724	F725	V726	M727	L738	E751	L611	N612	S613	E614	H615	K616	T625	H628	S633	I634	HIS																								
LEU	ILE	SER	GLY	HIS	ALA	HIS	VAL	V644	S645	D646	V652	L656	L659	V662	L676	L679	D684	L687	Q694	E709	L710	R717	L718	S719	S720	P723	M724	F725	V726	M727	L738	E751	V761	R766	L767	I768	L775	L776	L779	L780	L781																														
D785	F786	ASP	PRO	ASP	PRO	H791	F792	G793	V794	V798	T801	L805	F821	D830	S831	S832	L833	L834	A835	Y853	H854	P857	Y858	R859	K860	T863	L872	L888	F889	L890	A893	L903	GLY	MET	ILE	ASP	GLN	SER	ARG	ASP	ALA	ALA	VAL	SER	LEU																										
SER	GLU	SER	LYS	SER	ALA	LEU	PRO	VAL	GLU	THR	K985	C1004	R1009	R1028	P1029	Y1030	M1031	D1032	E1033	I1034	V1035	T1036	M1044	S1047	I1048	Q1049	L1069	P1072	I1075	L1079	L1097	L1107	L1113	P1116	P1117	I1118	V1119	T1138	D1150	S1153	R1238																														
SER	GLY	GLN	ASP	ALA	LEU	ALA	SER	PRO	VAL	THR	I1263	K1267	G1270	A1271	R1274	V1275	S1276	K1277	S1295	A1307	A1314	S1324	Q1348	T1354	L1372	P1373	L1416	N1420	N1421	K1422	Q1425	Y1435																																							

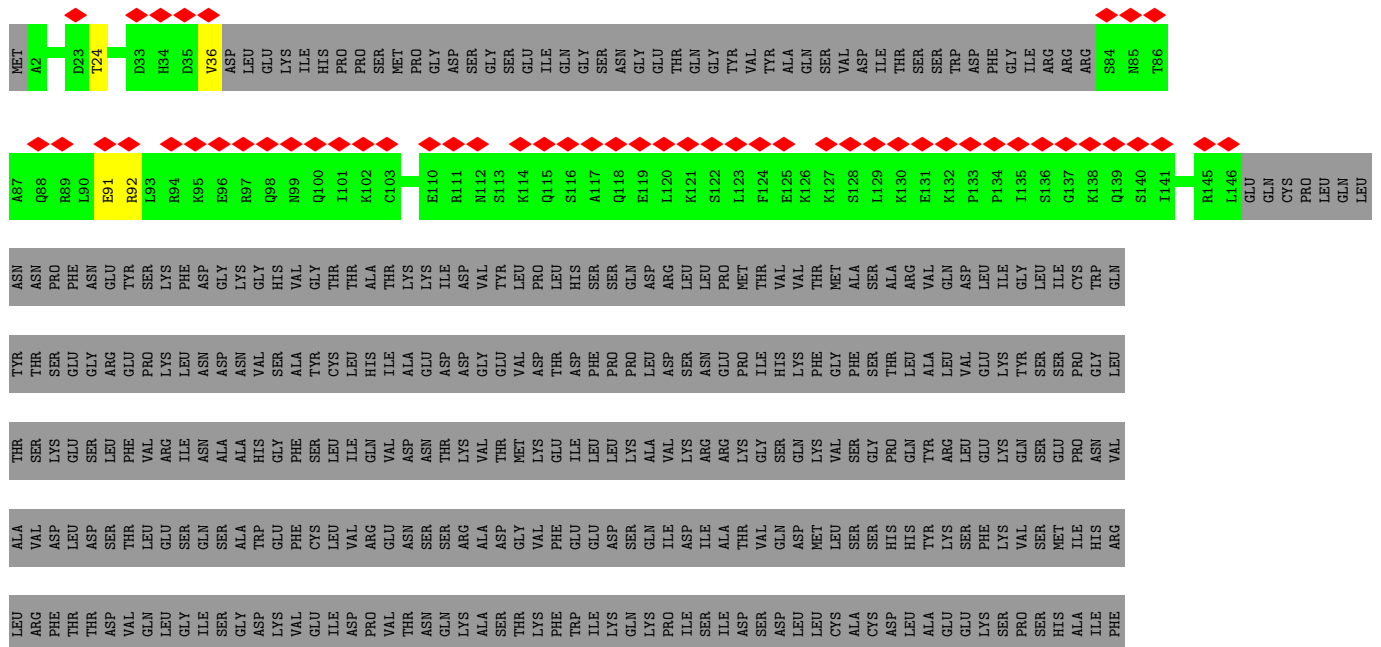


• Molecule 3: Rapamycin-insensitive companion of mTOR





● Molecule 4: Target of rapamycin complex 2 subunit MAPKAP1



LYS
LEU
THR
TYR
LYS
LEU
SER
ASN
HIS
ASP
LYS
TYR
HIS
LEU
TYR
PHE
GLU
SER
SER
ASP
ALA
ALA
THR
VAL
ASN
GLU
ILE
VAL
LEU
LYS
VAL
ASN
TYR
ILE
LEU
GLU
SER
SER
ARG
ALA
SER
THR
ALA
GLN
LYS
GLN
ARG
LYS
LEU
ASN
ARG
THR
SER
PHE
SER
PHE

GLN
LYS
GLU
LYS
SER
GLY
GLN

● Molecule 4: Target of rapamycin complex 2 subunit MAPKAP1



MET
A2
D5
N6
Q16
D22
D23
T24
D35
Y36
ASP
LEU
GLU
LYS
HIS
PRO
PRO
SER
MET
PRO
GLY
ASP
GLY
SER
SER
GLU
ILE
GLN
GLY
SER
ASN
GLY
THR
GLN
TYR
VAL
TYR
ALA
SER
VAL
ASP
GLN
GLN
ASP
ILE
THR
SER
SER
TRP
ASP
PHE
GLY
ILE
ARG
ARG

ARG
S84
N85
E91
K95
Q100
I101
M105
E110
R111
M112
Q115
S116
A117
Q118
E119
F124
L129
K130
E131
K132
P133
P134
I135
S136
G137
K138
Q139
S140
R145
L146
GLU
GLN
CYS
PRO
LEU
GLN
LEU
ASN
PRO
PHE
ASN
GLU
TYR
SER
LYS
PHE
ASP
LYS

GLY
HIS
VAL
GLY
THR
THR
ALA
THR
LYS
LYS
ILE
ASP
VAL
TYR
LEU
PRO
LEU
HIS
SER
SER
GLN
ASP
ARG
LEU
LEU
PRO
MET
THR
VAL
VAL
THR
MET
ALA
SER
SER
ALA
VAL
VAL
GLN
ASP
ILE
GLY
LEU
CYS
TRP
GLN
TYR
THR
SER
GLY
GLU
ARG
LEU
PRO
LYS
LEU
ASN
ALA

VAL
SER
ALA
TYR
CYS
LEU
LEU
HIS
ILE
VAL
ASP
ALA
SER
THR
ASP
GLY
GLU
VAL
VAL
ASP
THR
GLU
ILE
PHE
PRO
PRO
SER
ALA
LEU
ASP
LYS
ASN
ARG
ASN
GLU
PRO
MET
ILE
SER
HIS
LYS
PHE
GLY
SER
SER
LEU
ALA
VAL
VAL
LYS
GLY
SER
PRO

HIS
GLY
PHE
SER
LEU
ILE
GLN
VAL
ASP
ASN
THR
SER
LYS
VAL
THR
MET
LYS
VAL
GLU
ILE
LEU
LEU
LYS
SER
VAL
ALA
VAL
LYS
ARG
ARG
LYS
GLY
ILE
SER
SER
GLN
SER
VAL
VAL
VAL
ASP
LEU
VAL
LEU
VAL
VAL
SER
PRO
LEU
ASN
ALA

TRP
GLU
CYS
VAL
VAL
ARG
GLU
ASN
SER
SER
ARG
ALA
ASP
GLY
VAL
VAL
VAL
PHE
SER
HIS
HIS
TYR
ARG
LYS
SER
PHE
LEU
LYS
VAL
VAL
SER
SER
MET
ILE
HIS
ARG
VAL
LEU
ARG
PHE
THR
THR
THR
ASP
VAL
THR
SER
GLN
LEU
GLY
SER
HIS
SER
SER
SER
GLY

ASP
LYS
VAL
GLU
ILE
ASP
PRO
VAL
THR
SER
ASN
GLN
SER
ILE
ALA
SER
THR
LYS
VAL
ASN
PHE
TRP
ILE
LYS
SER
LYS
PRO
ARG
ALA
SER
ILE
ASP
SER
VAL
ASP
GLN
SER
CYS
ALA
SER
PHE
GLN
TYR
PHE
GLN
GLN
ARG
ALA
SER
GLY
LEU
SER
THR
HIS
VAL
PHE
GLN
LYS
THR
TYR
HIS
SER
SER
LEU
HIS
SER
SER
HIS
LEU

TYR
PHE
GLU
SER
ASP
ALA
ALA
THR
VAL
ASN
GLU
ILE
VAL
LEU
LYS
VAL
ASN
TYR
ILE
LEU
GLU
SER
SER
SER
THR
ALA
ARG
ALA
ASP
PHE
GLN
GLN
ARG
ALA
LYS
LEU
ASN
ARG
THR
SER
PHE
GLY
LYS
GLU
LYS
GLN

4 Experimental information

Property	Value	Source
EM reconstruction method	SINGLE PARTICLE	Depositor
Imposed symmetry	POINT, Not provided	
Number of particles used	293038	Depositor
Resolution determination method	FSC 0.143 CUT-OFF	Depositor
CTF correction method	PHASE FLIPPING AND AMPLITUDE CORRECTION	Depositor
Microscope	FEI TITAN KRIOS	Depositor
Voltage (kV)	300	Depositor
Electron dose ($e^-/\text{\AA}^2$)	70	Depositor
Minimum defocus (nm)	Not provided	
Maximum defocus (nm)	Not provided	
Magnification	Not provided	
Image detector	GATAN K2 SUMMIT (4k x 4k)	Depositor
Maximum map value	3.323	Depositor
Minimum map value	-1.756	Depositor
Average map value	-0.002	Depositor
Map value standard deviation	0.077	Depositor
Recommended contour level	0.375	Depositor
Map size (Å)	430.08, 430.08, 430.08	wwPDB
Map dimensions	320, 320, 320	wwPDB
Map angles (°)	90.0, 90.0, 90.0	wwPDB
Pixel spacing (Å)	1.344, 1.344, 1.344	Depositor

5 Model quality

5.1 Standard geometry

Bond lengths and bond angles in the following residue types are not validated in this section: AGS, IHP, ZN, ACE

The Z score for a bond length (or angle) is the number of standard deviations the observed value is removed from the expected value. A bond length (or angle) with $|Z| > 5$ is considered an outlier worth inspection. RMSZ is the root-mean-square of all Z scores of the bond lengths (or angles).

Mol	Chain	Bond lengths		Bond angles	
		RMSZ	# Z >5	RMSZ	# Z >5
1	A	0.27	0/16632	0.49	3/22593 (0.0%)
1	B	0.26	0/16598	0.47	3/22552 (0.0%)
2	C	0.28	0/2523	0.58	0/3438
2	D	0.27	0/2523	0.58	0/3438
3	E	0.28	0/9092	0.53	1/12300 (0.0%)
3	F	0.26	0/9092	0.50	1/12300 (0.0%)
4	G	0.27	0/660	0.54	0/900
4	H	0.25	0/660	0.50	0/900
All	All	0.27	0/57780	0.50	8/78421 (0.0%)

Chiral center outliers are detected by calculating the chiral volume of a chiral center and verifying if the center is modelled as a planar moiety or with the opposite hand. A planarity outlier is detected by checking planarity of atoms in a peptide group, atoms in a mainchain group or atoms of a sidechain that are expected to be planar.

Mol	Chain	#Chirality outliers	#Planarity outliers
3	E	0	1

There are no bond length outliers.

All (8) bond angle outliers are listed below:

Mol	Chain	Res	Type	Atoms	Z	Observed(°)	Ideal(°)
1	B	1107	LEU	CA-CB-CG	6.75	130.82	115.30
1	A	1107	LEU	CA-CB-CG	6.75	130.82	115.30
3	F	38	LEU	CA-CB-CG	6.51	130.28	115.30
3	E	529	LEU	CA-CB-CG	6.08	129.28	115.30
1	B	659	LEU	CA-CB-CG	5.74	128.49	115.30
1	A	2016	LEU	CA-CB-CG	5.58	128.13	115.30
1	B	2016	LEU	CA-CB-CG	5.41	127.74	115.30
1	A	1503	LEU	CA-CB-CG	5.34	127.58	115.30

There are no chirality outliers.

All (1) planarity outliers are listed below:

Mol	Chain	Res	Type	Group
3	E	367	GLY	Peptide

5.2 Too-close contacts [i](#)

In the following table, the Non-H and H(model) columns list the number of non-hydrogen atoms and hydrogen atoms in the chain respectively. The H(added) column lists the number of hydrogen atoms added and optimized by MolProbity. The Clashes column lists the number of clashes within the asymmetric unit, whereas Symm-Clashes lists symmetry-related clashes.

Mol	Chain	Non-H	H(model)	H(added)	Clashes	Symm-Clashes
1	A	16337	0	15369	110	0
1	B	16304	0	15298	97	0
2	C	2465	0	2351	33	0
2	D	2465	0	2351	33	0
3	E	8931	0	9080	80	0
3	F	8931	0	9080	69	0
4	G	655	0	519	2	0
4	H	655	0	519	6	0
5	A	31	0	12	1	0
5	B	31	0	12	0	0
5	E	31	0	12	1	0
5	F	31	0	12	1	0
6	A	36	0	6	2	0
6	B	36	0	6	2	0
7	E	1	0	0	0	0
7	F	1	0	0	0	0
8	G	3	0	3	0	0
8	H	3	0	3	0	0
All	All	56947	0	54633	413	0

The all-atom clashscore is defined as the number of clashes found per 1000 atoms (including hydrogen atoms). The all-atom clashscore for this structure is 4.

All (413) close contacts within the same asymmetric unit are listed below, sorted by their clash magnitude.

Atom-1	Atom-2	Interatomic distance (Å)	Clash overlap (Å)
3:E:552:GLY:O	3:E:556:LYS:HB2	1.75	0.87
3:E:920:ILE:HG23	3:E:964:ILE:HD11	1.75	0.69

Continued on next page...

Continued from previous page...

Atom-1	Atom-2	Interatomic distance (Å)	Clash overlap (Å)
1:A:1211:VAL:HA	3:E:553:THR:HG21	1.75	0.67
3:E:555:LEU:HD11	3:E:607:GLN:HG3	1.76	0.66
2:D:134:VAL:HG12	2:D:145:VAL:HG12	1.82	0.62
2:D:94:HIS:HB3	2:D:98:ARG:H	1.65	0.62
2:D:173:ILE:HA	2:D:189:ASN:HA	1.81	0.62
3:F:41:ILE:HG13	3:F:1693:LEU:HD11	1.82	0.61
2:C:173:ILE:HA	2:C:189:ASN:HA	1.82	0.61
1:B:676:LEU:HG	1:B:710:LEU:HD22	1.83	0.60
1:A:1435:TYR:O	1:A:1439:HIS:HB2	2.01	0.60
3:E:97:LYS:HA	3:E:100:ARG:HE	1.66	0.60
1:B:1097:LEU:HD22	1:B:1138:THR:HG21	1.83	0.60
2:C:238:CYS:HB3	2:C:273:MET:HB3	1.84	0.60
3:E:538:LEU:HD13	3:E:572:ARG:HE	1.67	0.60
2:C:94:HIS:HB3	2:C:98:ARG:H	1.66	0.59
1:A:1116:PRO:HA	1:A:1119:VAL:HG12	1.84	0.59
3:E:733:THR:HG21	3:E:766:ILE:HG23	1.84	0.59
3:F:912:PRO:HB2	3:F:914:LEU:HD13	1.84	0.59
1:A:2249:LEU:HB3	1:A:2302:LEU:HD21	1.83	0.59
1:B:723:PRO:O	1:B:727:MET:HB2	2.02	0.59
3:E:1488:SER:OG	3:E:1489:LEU:N	2.35	0.59
1:A:1277:LYS:HG2	1:A:1350:ILE:HG12	1.85	0.59
2:C:123:ARG:NH1	2:C:157:LEU:O	2.37	0.58
1:B:2011:MET:O	1:B:2015:GLU:HB2	2.04	0.58
1:A:1878:LEU:HD11	1:A:1918:ASP:HB2	1.84	0.58
2:C:145:VAL:HB	2:C:153:HIS:HB2	1.85	0.58
1:B:1878:LEU:HD11	1:B:1918:ASP:HB2	1.85	0.57
3:E:575:ARG:HA	3:E:578:LEU:HD12	1.86	0.57
3:E:1623:LEU:HD13	3:E:1632:HIS:HB2	1.87	0.56
2:D:90:SER:HB2	2:D:134:VAL:HG22	1.86	0.56
3:E:131:ARG:HH2	3:E:1678:GLN:HA	1.70	0.56
2:D:145:VAL:HG23	2:D:153:HIS:HB2	1.88	0.56
3:E:1689:ALA:O	3:E:1693:LEU:HB2	2.06	0.56
1:A:1749:ARG:NH2	6:A:2602:IHP:O45	2.37	0.55
1:A:2278:LEU:HB2	1:A:2283:LYS:HG3	1.88	0.55
3:F:910:ARG:NH2	3:F:946:GLU:O	2.37	0.55
1:B:2249:LEU:HB3	1:B:2302:LEU:HD21	1.88	0.55
2:C:131:ILE:HA	2:C:147:ASP:HA	1.88	0.55
3:E:616:GLU:O	3:E:620:GLN:NE2	2.40	0.55
1:B:1276:SER:OG	1:B:1277:LYS:N	2.40	0.55
3:F:523:ASP:OD2	3:F:557:TRP:NE1	2.40	0.55
3:E:650:GLY:O	3:E:654:THR:OG1	2.24	0.55

Continued on next page...

Continued from previous page...

Atom-1	Atom-2	Interatomic distance (Å)	Clash overlap (Å)
3:F:384:ARG:O	3:F:997:ARG:NH2	2.40	0.55
1:B:1116:PRO:HA	1:B:1119:VAL:HG22	1.89	0.54
1:A:957:ARG:NH1	1:A:1316:ASP:OD1	2.40	0.54
3:F:324:ARG:HH11	3:F:415:SER:HB2	1.71	0.54
1:A:1044:MET:O	1:A:1049:GLN:NE2	2.40	0.54
1:B:872:LEU:HB3	1:B:1576:THR:HG22	1.89	0.54
2:D:36:ARG:HH22	2:D:70:LEU:HA	1.73	0.54
2:D:221:ARG:HG3	2:D:241:ASP:HB3	1.90	0.54
3:E:188:ILE:HA	3:E:191:ILE:HD12	1.89	0.54
3:E:384:ARG:O	3:E:997:ARG:NH2	2.41	0.54
3:F:1649:ASP:OD1	3:F:1649:ASP:N	2.39	0.54
1:A:744:SER:HB3	1:B:1113:LEU:HD22	1.90	0.53
3:E:380:ARG:NH2	3:E:780:ASP:OD1	2.40	0.53
1:B:1004:CYS:O	1:B:1009:ARG:NH2	2.41	0.53
1:B:761:VAL:HG22	1:B:768:ILE:HG21	1.89	0.53
2:D:54:ARG:NH2	2:D:322:ASP:O	2.40	0.53
2:D:248:ARG:NH1	2:D:255:MET:SD	2.82	0.53
1:A:872:LEU:O	1:A:881:ARG:NH1	2.42	0.53
1:B:1501:TRP:O	1:B:1509:GLN:NE2	2.42	0.53
3:F:1609:ARG:HH22	3:F:1646:THR:HA	1.73	0.53
3:E:108:ARG:NH1	3:E:145:GLN:OE1	2.42	0.53
3:F:607:GLN:HA	3:F:610:GLU:HG2	1.90	0.53
3:E:1628:SER:HG	3:E:1631:CYS:HG	1.57	0.53
3:F:572:ARG:NH1	5:F:4802:AGS:O2B	2.42	0.53
1:A:779:LEU:HD22	1:A:798:VAL:HG23	1.91	0.53
3:E:1682:PHE:O	3:E:1686:HIS:ND1	2.42	0.53
3:F:245:ARG:HB2	3:F:249:GLU:HG3	1.91	0.53
3:F:616:GLU:O	3:F:620:GLN:NE2	2.42	0.53
1:A:1793:TRP:O	1:A:1797:ASN:ND2	2.42	0.52
2:C:85:ASN:OD1	2:C:85:ASN:N	2.42	0.52
3:E:1618:ARG:HA	3:E:1621:ILE:HG22	1.91	0.52
1:B:1954:GLY:O	1:B:1958:HIS:ND1	2.43	0.52
3:E:806:LEU:HD11	3:E:882:LEU:HD12	1.90	0.52
1:B:2194:GLN:HG3	1:B:2421:PHE:HZ	1.75	0.52
3:F:97:LYS:NZ	3:F:138:SER:O	2.42	0.52
1:A:1487:LEU:O	1:A:1665:ARG:NH1	2.42	0.52
1:A:1954:GLY:O	1:A:1958:HIS:ND1	2.41	0.52
1:B:1069:LEU:HD22	3:F:463:LYS:HG3	1.91	0.52
1:B:1499:GLU:HG3	1:B:1500:LYS:HG3	1.91	0.52
3:E:299:ILE:HD12	3:E:962:LEU:HB3	1.91	0.52
3:F:170:ILE:O	3:F:174:ASN:HB2	2.09	0.52

Continued on next page...

Continued from previous page...

Atom-1	Atom-2	Interatomic distance (Å)	Clash overlap (Å)
1:A:1898:ASN:N	1:A:1898:ASN:OD1	2.42	0.52
1:B:2276:ASP:N	1:B:2276:ASP:OD1	2.37	0.51
1:B:1615:ILE:HA	1:B:1618:ILE:HG12	1.92	0.51
2:C:54:ARG:NH2	2:C:322:ASP:O	2.39	0.51
3:E:910:ARG:NH2	3:E:946:GLU:O	2.43	0.51
1:B:1044:MET:O	1:B:1049:GLN:NE2	2.44	0.51
2:C:137:HIS:ND1	2:C:139:ASN:OD1	2.41	0.51
3:E:139:ASN:ND2	3:E:142:GLU:OE1	2.39	0.51
1:A:608:ASP:O	1:A:612:ASN:ND2	2.44	0.51
1:B:1069:LEU:HD23	3:F:467:LEU:HD12	1.93	0.51
1:B:2145:ASP:OD1	1:B:2145:ASP:N	2.41	0.51
3:E:930:LEU:HA	3:E:933:ILE:HG12	1.93	0.51
1:A:1569:ASP:HA	1:A:1572:ASP:HB3	1.91	0.51
1:B:2278:LEU:HB2	1:B:2283:LYS:HG3	1.92	0.51
2:C:38:VAL:HG13	2:C:75:PRO:HA	1.92	0.51
3:E:398:ALA:O	3:E:402:ASN:ND2	2.42	0.51
3:E:544:LEU:HD21	3:E:591:LEU:HD21	1.92	0.51
3:F:398:ALA:O	3:F:402:ASN:ND2	2.42	0.51
1:A:686:HIS:O	1:A:692:ASN:ND2	2.40	0.51
1:A:2503:ARG:HH21	1:A:2512:ASP:HB2	1.76	0.51
1:A:1527:ASP:OD2	1:A:1527:ASP:N	2.44	0.51
3:E:721:LEU:HD12	3:E:722:THR:HG23	1.93	0.51
1:A:1031:MET:O	1:A:1034:ILE:HB	2.11	0.51
1:B:719:SER:HA	1:B:726:VAL:HG21	1.93	0.51
1:B:751:GLU:HG2	1:B:794:VAL:HB	1.94	0.50
2:C:87:ASN:O	2:C:105:GLU:N	2.43	0.50
3:E:904:GLU:O	3:E:908:ASN:HB2	2.11	0.50
1:B:1509:GLN:HA	1:B:1512:MET:HG2	1.92	0.50
1:A:757:LEU:HD21	1:A:775:ILE:HG23	1.93	0.50
3:F:124:LYS:HE2	3:F:1519:ASN:HA	1.92	0.50
1:A:2011:MET:O	1:A:2015:GLU:HB2	2.11	0.50
1:B:1307:ALA:HB1	1:B:1314:ALA:HB2	1.93	0.50
3:F:139:ASN:ND2	3:F:142:GLU:OE1	2.45	0.50
3:F:299:ILE:HD12	3:F:962:LEU:HB3	1.93	0.50
1:A:2015:GLU:OE2	1:A:2018:ARG:NH1	2.45	0.50
1:B:2025:GLU:OE2	1:B:2170:ARG:NH2	2.38	0.50
2:C:246:ILE:HD11	2:C:285:ILE:HD13	1.93	0.50
1:A:1263:ILE:HG22	1:A:1333:GLN:HE22	1.76	0.50
1:A:2145:ASP:N	1:A:2145:ASP:OD1	2.45	0.50
1:B:1898:ASN:OD1	1:B:1898:ASN:N	2.43	0.50
1:A:2194:GLN:HG3	1:A:2421:PHE:HZ	1.77	0.50

Continued on next page...

Continued from previous page...

Atom-1	Atom-2	Interatomic distance (Å)	Clash overlap (Å)
1:B:1618:ILE:HA	1:B:1621:GLU:HB2	1.94	0.50
3:F:126:ASP:OD1	3:F:126:ASP:N	2.45	0.50
3:F:509:ASP:OD2	3:F:509:ASP:N	2.44	0.50
3:E:131:ARG:HB2	3:E:1674:GLN:HE21	1.75	0.50
1:B:2503:ARG:HH21	1:B:2512:ASP:HB2	1.77	0.49
3:E:481:GLU:HA	3:E:484:LYS:HG2	1.93	0.49
2:D:142:GLU:HG3	2:D:156:ASP:HB3	1.93	0.49
3:F:150:VAL:HG11	3:F:165:VAL:HG11	1.93	0.49
1:B:2277:HIS:O	2:D:44:GLN:NE2	2.45	0.49
2:D:91:VAL:HG12	2:D:102:THR:HG22	1.93	0.49
3:E:771:LEU:HD11	3:E:797:LEU:HD13	1.95	0.49
3:F:996:SER:OG	3:F:997:ARG:N	2.45	0.49
4:G:91:GLU:OE1	4:G:92:ARG:NH1	2.46	0.49
1:B:684:ASP:OD1	1:B:717:ARG:NH1	2.45	0.49
1:A:1072:PRO:O	1:A:1075:ILE:HB	2.12	0.49
1:A:1615:ILE:HA	1:A:1618:ILE:HG12	1.94	0.49
1:B:1028:ARG:NH2	3:F:464:GLU:OE2	2.45	0.49
3:E:126:ASP:OD1	3:E:126:ASP:N	2.41	0.49
1:A:1213:ILE:HA	1:A:1216:ILE:HG12	1.94	0.49
3:E:1649:ASP:N	3:E:1649:ASP:OD1	2.40	0.49
3:F:1682:PHE:O	3:F:1686:HIS:ND1	2.46	0.49
1:A:893:ALA:HA	1:A:1590:MET:HG2	1.95	0.49
1:B:2270:ARG:O	2:D:313:LYS:NZ	2.41	0.49
2:D:27:TRP:HA	2:D:35:THR:HG23	1.95	0.49
1:B:1793:TRP:O	1:B:1797:ASN:ND2	2.46	0.48
1:B:1702:LYS:NZ	6:B:2602:IHP:O22	2.40	0.48
1:A:1069:LEU:HD23	3:E:467:LEU:HD12	1.96	0.48
2:C:239:SER:OG	2:C:241:ASP:OD1	2.30	0.48
3:F:210:THR:O	3:F:214:ASN:HB2	2.13	0.48
1:A:2512:ASP:OD1	1:A:2512:ASP:N	2.42	0.48
2:D:245:LYS:HD3	2:D:254:LEU:HD21	1.95	0.48
2:D:102:THR:HG1	2:D:112:TRP:HE1	1.61	0.48
1:A:1069:LEU:HD22	3:E:463:LYS:HG3	1.96	0.48
1:B:2252:ASP:HA	1:B:2255:GLU:HG2	1.95	0.48
3:E:996:SER:OG	3:E:997:ARG:N	2.47	0.48
3:F:335:PHE:O	3:F:873:ARG:NH2	2.42	0.48
3:F:595:PHE:HB3	3:F:598:ALA:HB2	1.94	0.48
1:A:1702:LYS:NZ	6:A:2602:IHP:O22	2.46	0.48
3:E:45:VAL:HG22	3:E:90:LEU:HD12	1.96	0.48
3:F:592:ASP:HA	3:F:654:THR:HA	1.95	0.48
1:B:1031:MET:O	1:B:1034:ILE:HB	2.13	0.48

Continued on next page...

Continued from previous page...

Atom-1	Atom-2	Interatomic distance (Å)	Clash overlap (Å)
1:B:2326:VAL:HG22	1:B:2403:VAL:HG21	1.95	0.48
2:C:69:ASP:OD1	2:C:72:SER:OG	2.32	0.48
3:E:1518:ASP:HA	3:E:1524:VAL:HG22	1.96	0.48
3:F:415:SER:OG	3:F:416:ASP:N	2.46	0.48
1:A:1362:GLU:HA	1:A:1365:GLU:HG2	1.95	0.48
3:F:131:ARG:HH22	3:F:1678:GLN:HA	1.78	0.47
1:A:2520:ASP:OD1	1:A:2520:ASP:N	2.44	0.47
1:A:594:PHE:HB2	1:A:599:LEU:HD11	1.96	0.47
1:A:1745:LYS:NZ	1:A:1783:ASP:OD1	2.38	0.47
3:F:1613:ARG:NH2	3:F:1649:ASP:OD2	2.45	0.47
2:D:231:ASP:OD2	2:D:231:ASP:N	2.44	0.47
3:E:1609:ARG:HH22	3:E:1646:THR:HA	1.79	0.47
2:D:232:SER:O	2:D:232:SER:OG	2.32	0.47
3:E:269:ALA:HB3	3:E:272:GLN:HE22	1.80	0.47
3:E:1613:ARG:NH2	3:E:1649:ASP:OD2	2.48	0.47
1:A:1072:PRO:HA	1:A:1075:ILE:HD12	1.97	0.47
2:D:38:VAL:HG13	2:D:75:PRO:HA	1.97	0.47
3:E:170:ILE:O	3:E:174:ASN:HB2	2.14	0.47
3:F:854:TYR:O	4:H:16:GLN:NE2	2.44	0.47
1:A:2025:GLU:OE2	1:A:2170:ARG:NH2	2.40	0.46
2:C:94:HIS:CD2	2:C:96:ASP:H	2.33	0.46
1:B:857:PRO:HA	1:B:860:LYS:HG2	1.97	0.46
1:B:1072:PRO:HA	1:B:1075:ILE:HD12	1.97	0.46
2:C:48:LEU:HA	2:C:58:ALA:O	2.14	0.46
2:D:144:ILE:HD12	2:D:178:ILE:HD11	1.97	0.46
1:B:1033:GLU:HA	1:B:1036:THR:HG22	1.98	0.46
3:E:831:TRP:HA	3:E:835:TYR:HB2	1.96	0.46
3:F:538:LEU:HD23	3:F:572:ARG:HE	1.79	0.46
4:H:6:ASN:N	4:H:6:ASN:OD1	2.47	0.46
1:B:2512:ASP:OD1	1:B:2512:ASP:N	2.39	0.46
3:E:628:LYS:HD2	3:E:628:LYS:HA	1.68	0.46
3:E:968:CYS:HA	3:E:971:VAL:HG22	1.97	0.46
1:A:2095:LYS:HE2	1:A:2095:LYS:HB3	1.79	0.46
3:E:551:ILE:HG23	3:E:573:PHE:HZ	1.80	0.46
1:A:2326:VAL:HG22	1:A:2403:VAL:HG21	1.97	0.46
1:B:380:CYS:O	1:B:386:SER:N	2.48	0.46
2:C:100:MET:O	2:C:111:ILE:HA	2.16	0.46
3:F:185:ARG:NH1	4:H:22:ASP:OD1	2.49	0.46
1:A:850:SER:HA	1:A:1611:ARG:HH12	1.80	0.46
1:A:2192:LEU:HD21	1:A:2237:ILE:HG13	1.98	0.46
3:F:634:LEU:HD21	3:F:688:LEU:HD12	1.97	0.46

Continued on next page...

Continued from previous page...

Atom-1	Atom-2	Interatomic distance (Å)	Clash overlap (Å)
1:A:2278:LEU:HB3	1:A:2282:GLN:HB2	1.97	0.46
2:C:148:GLN:HA	2:C:172:SER:HB2	1.98	0.46
2:D:87:ASN:O	2:D:105:GLU:N	2.46	0.46
3:F:86:ILE:HA	3:F:89:ARG:HD3	1.98	0.46
1:A:1033:GLU:HA	1:A:1036:THR:HG22	1.97	0.46
1:A:1509:GLN:HA	1:A:1512:MET:HG2	1.98	0.46
3:E:936:SER:OG	3:E:937:ASN:N	2.49	0.46
1:A:1804:TYR:O	1:A:1808:ASN:ND2	2.49	0.45
3:E:809:LEU:HG	3:E:815:PHE:HD2	1.81	0.45
1:A:1307:ALA:HB1	1:A:1314:ALA:HB2	1.99	0.45
1:A:2170:ARG:HB2	1:A:2186:LEU:HB3	1.97	0.45
3:F:293:ARG:O	4:H:2:ALA:N	2.49	0.45
3:F:1535:ASN:HD21	3:F:1684:GLN:HG3	1.81	0.45
1:B:1595:MET:HG3	1:B:1639:VAL:HG11	1.97	0.45
1:B:2192:LEU:HD21	1:B:2237:ILE:HG13	1.99	0.45
1:A:701:ASN:O	1:B:1153:SER:OG	2.35	0.45
1:A:1367:SER:OG	1:A:1368:ASP:N	2.48	0.45
1:B:1295:SER:O	1:B:1324:SER:OG	2.35	0.45
3:F:138:SER:O	3:F:138:SER:OG	2.31	0.45
1:A:761:VAL:HA	1:A:768:ILE:HD12	1.99	0.45
3:E:592:ASP:HA	3:E:654:THR:HA	1.99	0.45
1:B:1422:LYS:HB3	1:B:1422:LYS:HE2	1.73	0.45
1:B:2009:ALA:HA	1:B:2138:LEU:HD11	1.99	0.45
1:B:1499:GLU:OE2	1:B:1500:LYS:NZ	2.50	0.45
3:F:617:GLU:HA	3:F:620:GLN:HE22	1.81	0.45
1:A:727:MET:HG3	3:F:447:HIS:HB2	1.98	0.45
1:A:1618:ILE:HA	1:A:1621:GLU:HB2	1.98	0.45
1:B:738:LEU:HD21	1:B:775:ILE:HG12	1.99	0.45
1:B:1552:LEU:HD13	1:B:1599:LEU:HD22	1.98	0.45
2:C:272:TRP:N	2:C:290:SER:OG	2.50	0.45
2:D:94:HIS:CD2	2:D:96:ASP:H	2.35	0.45
3:F:139:ASN:OD1	3:F:139:ASN:N	2.50	0.45
2:C:66:ARG:HB3	2:C:77:PRO:HB3	1.99	0.45
1:A:1004:CYS:O	1:A:1009:ARG:NH2	2.50	0.44
1:A:2270:ARG:O	2:C:313:LYS:NZ	2.41	0.44
1:B:1079:LEU:HD22	1:B:1117:PRO:HG2	1.99	0.44
1:B:1150:ASP:OD2	3:F:477:LYS:NZ	2.50	0.44
3:E:1637:LEU:HD23	3:E:1637:LEU:HA	1.82	0.44
1:B:1569:ASP:HA	1:B:1572:ASP:HB3	1.99	0.44
2:D:287:THR:HG1	2:D:297:TRP:HE1	1.64	0.44
1:A:970:MET:HA	1:A:973:GLN:HG2	1.99	0.44

Continued on next page...

Continued from previous page...

Atom-1	Atom-2	Interatomic distance (Å)	Clash overlap (Å)
1:A:990:LEU:HA	1:A:993:VAL:HG12	1.98	0.44
1:B:720:SER:OG	1:B:766:ARG:NH2	2.49	0.44
1:B:1435:TYR:O	1:B:1439:HIS:HB2	2.16	0.44
2:C:24:VAL:HG13	2:C:38:VAL:HB	2.00	0.44
3:E:97:LYS:HB3	3:E:100:ARG:HH21	1.82	0.44
1:A:757:LEU:HD11	1:A:775:ILE:HD13	1.99	0.44
1:A:1425:GLN:HG3	1:A:2314:PHE:HZ	1.83	0.44
3:E:721:LEU:HD21	3:E:754:LEU:HD22	1.99	0.44
3:E:791:LYS:HG2	3:E:817:TYR:CZ	2.53	0.44
3:E:1445:PHE:HA	3:E:1448:LYS:HG3	1.99	0.44
3:F:1488:SER:OG	3:F:1489:LEU:N	2.51	0.44
1:A:1295:SER:O	1:A:1295:SER:OG	2.34	0.44
1:B:1047:SER:O	1:B:1047:SER:OG	2.36	0.44
2:C:17:THR:OG1	2:C:311:HIS:NE2	2.46	0.44
3:F:529:LEU:HD23	3:F:532:LEU:HD21	1.99	0.44
1:A:2165:SER:OG	1:A:2166:LYS:N	2.51	0.44
2:C:245:LYS:HD3	2:C:254:LEU:HD11	1.99	0.44
2:D:27:TRP:HB3	2:D:34:CYS:HA	2.00	0.44
1:A:2055:HIS:NE2	1:A:2104:TYR:OH	2.42	0.43
1:B:893:ALA:HA	1:B:1590:MET:HG2	1.98	0.43
1:A:785:ASP:OD2	1:A:785:ASP:N	2.46	0.43
1:A:796:ASN:HB2	1:A:839:VAL:HG21	2.00	0.43
1:A:1374:LEU:HD12	1:A:1379:GLY:HA3	2.01	0.43
1:B:1707:SER:OG	1:B:1708:ALA:N	2.51	0.43
2:C:19:GLY:HA3	2:C:315:VAL:HA	2.01	0.43
1:B:1546:TYR:HA	1:B:1549:VAL:HG12	2.00	0.43
1:B:2520:ASP:OD1	1:B:2520:ASP:N	2.44	0.43
3:F:1440:LYS:HD3	3:F:1440:LYS:HA	1.80	0.43
1:B:2019:VAL:HG13	1:B:2126:VAL:HG11	2.00	0.43
1:A:1663:SER:O	1:A:1663:SER:OG	2.35	0.43
1:B:679:LEU:HD12	1:B:687:LEU:HD11	2.01	0.43
2:C:13:VAL:HG23	2:C:322:ASP:HB3	2.00	0.43
2:D:66:ARG:HB3	2:D:77:PRO:HB3	2.00	0.43
3:E:47:ARG:HB2	3:E:49:GLN:HE21	1.84	0.43
3:E:500:LYS:HE2	3:E:668:CYS:HB3	1.99	0.43
1:A:726:VAL:HG12	1:A:730:LEU:HG	2.01	0.43
1:B:798:VAL:HA	1:B:801:THR:HG22	2.01	0.43
1:B:1961:LEU:HD22	1:B:1972:LEU:HD11	2.01	0.43
2:D:137:HIS:ND1	2:D:139:ASN:OD1	2.48	0.43
3:F:491:SER:OG	3:F:492:LEU:N	2.52	0.43
2:C:37:THR:O	2:C:37:THR:OG1	2.36	0.43

Continued on next page...

Continued from previous page...

Atom-1	Atom-2	Interatomic distance (Å)	Clash overlap (Å)
2:C:149:SER:O	2:C:149:SER:OG	2.37	0.43
1:A:578:ASP:OD2	1:A:578:ASP:N	2.52	0.43
1:A:1338:ILE:HA	1:A:1341:ILE:HG22	2.01	0.43
1:A:1465:LYS:HE2	1:A:1465:LYS:HB3	1.77	0.43
1:A:2185:LEU:HD23	1:A:2187:LYS:HD3	2.00	0.43
1:B:1372:LEU:HA	1:B:1373:PRO:HD3	1.92	0.43
2:D:203:ILE:H	2:D:203:ILE:HG13	1.67	0.43
3:E:185:ARG:HA	3:E:188:ILE:HG12	2.01	0.43
1:A:1150:ASP:OD1	1:A:1150:ASP:N	2.51	0.42
1:B:1425:GLN:HG3	1:B:2314:PHE:HZ	1.84	0.42
2:C:173:ILE:HG22	2:C:189:ASN:HB3	2.00	0.42
1:A:1079:LEU:HD22	1:A:1117:PRO:HG2	2.01	0.42
1:A:2204:LEU:HD22	1:A:2417:VAL:HG21	2.01	0.42
1:B:785:ASP:OD1	1:B:785:ASP:N	2.51	0.42
1:B:1874:SER:O	1:B:1874:SER:OG	2.34	0.42
3:E:1693:LEU:HD12	3:E:1693:LEU:HA	1.85	0.42
3:F:959:CYS:SG	3:F:960:GLU:N	2.93	0.42
4:H:35:ASP:N	4:H:35:ASP:OD2	2.36	0.42
1:A:761:VAL:HG21	1:A:805:LEU:HD13	2.01	0.42
1:A:1546:TYR:HA	1:A:1549:VAL:HG12	2.01	0.42
3:E:409:VAL:HG13	3:E:452:LEU:HD13	2.01	0.42
3:F:939:GLY:O	3:F:943:LEU:HB2	2.19	0.42
1:A:1552:LEU:HD13	1:A:1599:LEU:HD22	2.01	0.42
2:D:254:LEU:HD23	2:D:254:LEU:HA	1.94	0.42
3:F:683:GLN:HA	3:F:686:LEU:HD12	2.01	0.42
1:A:874:THR:OG1	1:A:875:GLU:OE1	2.35	0.42
1:A:1416:LEU:O	1:A:1420:ASN:ND2	2.46	0.42
1:B:601:GLN:HA	1:B:604:ARG:HE	1.85	0.42
1:B:2134:ARG:HD3	1:B:2134:ARG:HA	1.86	0.42
3:F:959:CYS:O	3:F:965:ARG:NH2	2.45	0.42
1:A:1163:LEU:O	1:A:1170:ARG:NE	2.52	0.42
1:B:590:GLY:HA3	1:B:625:THR:HG22	2.02	0.42
1:B:888:LEU:HD12	1:B:888:LEU:HA	1.91	0.42
1:B:1759:LEU:HD23	1:B:1759:LEU:HA	1.91	0.42
3:E:188:ILE:HD12	3:E:227:LEU:HD11	2.02	0.42
3:E:217:ASP:OD1	3:E:217:ASP:N	2.53	0.42
3:F:379:HIS:HD2	3:F:381:ALA:H	1.66	0.42
3:F:409:VAL:HG13	3:F:452:LEU:HD13	2.02	0.42
1:A:1422:LYS:HE2	1:A:1422:LYS:HB3	1.76	0.42
3:E:151:ARG:NH2	4:G:36:VAL:O	2.53	0.42
1:A:1743:LEU:HD23	1:A:1743:LEU:HA	1.92	0.42

Continued on next page...

Continued from previous page...

Atom-1	Atom-2	Interatomic distance (Å)	Clash overlap (Å)
1:B:1607:LEU:HD23	1:B:1607:LEU:HA	1.92	0.42
1:A:797:ASN:O	1:A:801:THR:HG23	2.20	0.42
1:A:1607:LEU:HD23	1:A:1607:LEU:HA	1.93	0.42
1:B:1733:ALA:HB3	1:B:1740:LYS:HD3	2.02	0.42
3:E:73:SER:H	3:E:77:LEU:HD13	1.85	0.42
3:F:1537:LEU:HD21	3:F:1649:ASP:HB3	2.02	0.42
1:B:2161:GLN:HG3	1:B:2171:LYS:HB3	2.02	0.42
3:E:905:LEU:HB3	3:E:930:LEU:HD11	2.01	0.42
3:F:51:VAL:HG13	3:F:55:ARG:HD2	2.01	0.42
3:F:217:ASP:OD1	3:F:217:ASP:N	2.51	0.42
3:F:666:LEU:HD12	3:F:666:LEU:HA	1.93	0.42
1:A:758:GLY:HA3	1:A:801:THR:HG22	2.02	0.41
1:A:1116:PRO:O	1:A:1120:LYS:HB2	2.20	0.41
1:A:1618:ILE:O	1:A:1622:ARG:N	2.53	0.41
1:B:1749:ARG:NH2	6:B:2602:IHP:O45	2.39	0.41
1:B:2137:GLU:O	1:B:2152:ARG:NH1	2.53	0.41
3:E:225:GLU:HA	3:E:228:ILE:HG22	2.01	0.41
3:E:593:LEU:HD21	3:E:657:GLN:HE21	1.85	0.41
3:F:324:ARG:NH1	3:F:414:ASN:O	2.53	0.41
1:B:2336:LEU:HD23	1:B:2336:LEU:HA	1.94	0.41
3:E:245:ARG:H	3:E:249:GLU:HG3	1.86	0.41
1:B:2195:ASP:HA	1:B:2198:VAL:HG22	2.02	0.41
2:C:279:SER:OG	2:C:280:GLY:N	2.53	0.41
3:E:572:ARG:NH1	5:E:4802:AGS:O2B	2.53	0.41
1:A:607:ALA:HB1	1:A:658:LYS:HD2	2.02	0.41
3:E:53:ASN:HB3	3:E:99:VAL:HG21	2.02	0.41
3:E:587:LEU:HD23	3:E:587:LEU:HA	1.94	0.41
1:A:1501:TRP:O	1:A:1509:GLN:NE2	2.52	0.41
1:A:2322:ARG:HE	1:A:2322:ARG:HB3	1.65	0.41
1:A:888:LEU:HD12	1:A:888:LEU:HA	1.91	0.41
1:A:2134:ARG:HA	1:A:2134:ARG:HD3	1.86	0.41
1:A:2336:LEU:HD21	1:A:2358:PHE:HD1	1.85	0.41
1:B:2332:TYR:OH	1:B:2512:ASP:OD2	2.36	0.41
2:D:43:SER:OG	2:D:44:GLN:N	2.53	0.41
3:F:354:ASP:O	3:F:357:ARG:NH2	2.49	0.41
1:A:2336:LEU:HD23	1:A:2336:LEU:HA	1.92	0.41
1:B:776:LEU:HD12	1:B:776:LEU:HA	1.93	0.41
3:E:1614:LYS:HD3	3:E:1614:LYS:HA	1.73	0.41
1:A:583:THR:HG23	1:A:621:GLU:HG3	2.03	0.41
1:B:2055:HIS:NE2	1:B:2104:TYR:OH	2.37	0.41
2:D:60:ALA:HB1	2:D:88:ILE:HB	2.03	0.41

Continued on next page...

Continued from previous page...

Atom-1	Atom-2	Interatomic distance (Å)	Clash overlap (Å)
3:E:380:ARG:HH12	3:E:743:ASN:HD21	1.67	0.41
3:E:586:LYS:HG3	3:E:590:ASN:HD21	1.86	0.41
3:F:791:LYS:HG2	3:F:817:TYR:CZ	2.56	0.41
4:H:23:ASP:OD2	4:H:23:ASP:N	2.53	0.41
1:A:885:ILE:HD11	1:A:1568:ARG:HB3	2.03	0.41
1:A:2277:HIS:O	2:C:44:GLN:NE2	2.54	0.41
1:B:652:VAL:O	1:B:656:LEU:HB2	2.21	0.41
1:B:659:LEU:HA	1:B:662:VAL:HG12	2.03	0.41
1:B:1475:GLU:OE2	1:B:1511:LYS:NZ	2.42	0.41
3:E:834:GLU:HG3	3:E:835:TYR:HD1	1.86	0.41
3:E:1513:GLN:HG2	3:E:1614:LYS:NZ	2.35	0.41
3:F:794:LEU:HB2	3:F:805:LEU:HD12	2.03	0.41
1:A:894:LEU:O	1:A:1583:TYR:OH	2.34	0.41
1:A:1704:MET:HG3	1:A:1709:ARG:HH21	1.86	0.41
1:A:1719:HIS:HA	1:A:1722:GLN:HE21	1.86	0.41
1:A:1733:ALA:HB3	1:A:1740:LYS:HD3	2.02	0.41
5:A:2601:AGS:O2B	5:A:2601:AGS:S1G	2.78	0.41
1:B:1416:LEU:O	1:B:1420:ASN:ND2	2.47	0.41
3:E:467:LEU:HD23	3:E:467:LEU:HA	1.82	0.41
3:F:698:LEU:HA	3:F:701:THR:HG22	2.03	0.41
3:F:831:TRP:HA	3:F:835:TYR:HB2	2.02	0.41
1:A:970:MET:HG3	1:A:1306:LEU:HD13	2.03	0.40
1:A:1037:LEU:HD23	1:A:1037:LEU:HA	1.89	0.40
1:B:779:LEU:HD22	1:B:798:VAL:HG23	2.02	0.40
1:B:1932:ILE:HD12	1:B:1932:ILE:HA	1.97	0.40
2:D:54:ARG:HH22	2:D:323:SER:HA	1.87	0.40
1:B:985:LYS:HE2	1:B:985:LYS:HB3	1.96	0.40
3:F:67:LEU:HD11	3:F:72:HIS:HB3	2.02	0.40
3:F:481:GLU:HA	3:F:484:LYS:HG2	2.03	0.40
3:F:1623:LEU:HD23	3:F:1673:ILE:HD11	2.03	0.40
2:C:194:CYS:HB3	2:C:216:ILE:HG23	2.03	0.40
3:E:781:LYS:O	3:E:785:HIS:ND1	2.41	0.40
3:E:1661:SER:O	3:E:1661:SER:OG	2.40	0.40
3:F:467:LEU:HD23	3:F:467:LEU:HA	1.80	0.40
2:C:100:MET:HB2	2:C:112:TRP:HB2	2.04	0.40
2:D:173:ILE:HG22	2:D:189:ASN:HB3	2.03	0.40
1:A:664:ILE:HD13	1:A:664:ILE:HA	1.91	0.40
1:A:1932:ILE:HD12	1:A:1932:ILE:HA	1.99	0.40
1:B:776:LEU:HD13	1:B:805:LEU:HD23	2.04	0.40
1:B:2121:LEU:HD11	1:B:2170:ARG:HE	1.87	0.40
1:B:2170:ARG:HB2	1:B:2186:LEU:HB3	2.04	0.40

Continued on next page...

Continued from previous page...

Atom-1	Atom-2	Interatomic distance (Å)	Clash overlap (Å)
2:D:239:SER:OG	2:D:240:ALA:N	2.53	0.40

There are no symmetry-related clashes.

5.3 Torsion angles [i](#)

5.3.1 Protein backbone [i](#)

In the following table, the Percentiles column shows the percent Ramachandran outliers of the chain as a percentile score with respect to all PDB entries followed by that with respect to all EM entries.

The Analysed column shows the number of residues for which the backbone conformation was analysed, and the total number of residues.

Mol	Chain	Analysed	Favoured	Allowed	Outliers	Percentiles	
1	A	2143/2549 (84%)	2080 (97%)	62 (3%)	1 (0%)	100	100
1	B	2145/2549 (84%)	2071 (97%)	73 (3%)	1 (0%)	100	100
2	C	317/326 (97%)	299 (94%)	18 (6%)	0	100	100
2	D	317/326 (97%)	291 (92%)	26 (8%)	0	100	100
3	E	1103/1708 (65%)	1066 (97%)	37 (3%)	0	100	100
3	F	1103/1708 (65%)	1067 (97%)	36 (3%)	0	100	100
4	G	94/522 (18%)	86 (92%)	8 (8%)	0	100	100
4	H	94/522 (18%)	85 (90%)	9 (10%)	0	100	100
All	All	7316/10210 (72%)	7045 (96%)	269 (4%)	2 (0%)	100	100

All (2) Ramachandran outliers are listed below:

Mol	Chain	Res	Type
1	B	121	VAL
1	A	121	VAL

5.3.2 Protein sidechains [i](#)

In the following table, the Percentiles column shows the percent sidechain outliers of the chain as a percentile score with respect to all PDB entries followed by that with respect to all EM entries.

The Analysed column shows the number of residues for which the sidechain conformation was analysed, and the total number of residues.

Mol	Chain	Analysed	Rotameric	Outliers	Percentiles	
1	A	1563/2220 (70%)	1541 (99%)	22 (1%)	67	86
1	B	1552/2220 (70%)	1524 (98%)	28 (2%)	59	82
2	C	269/276 (98%)	260 (97%)	9 (3%)	38	71
2	D	269/276 (98%)	262 (97%)	7 (3%)	46	76
3	E	987/1539 (64%)	977 (99%)	10 (1%)	76	90
3	F	987/1539 (64%)	976 (99%)	11 (1%)	73	88
4	G	50/471 (11%)	49 (98%)	1 (2%)	55	80
4	H	50/471 (11%)	48 (96%)	2 (4%)	31	66
All	All	5727/9012 (64%)	5637 (98%)	90 (2%)	64	84

All (90) residues with a non-rotameric sidechain are listed below:

Mol	Chain	Res	Type
1	A	666	ASP
1	A	725	PHE
1	A	821	PHE
1	A	853	TYR
1	A	854	VAL
1	A	858	TYR
1	A	890	LEU
1	A	969	THR
1	A	980	LYS
1	A	1030	TYR
1	A	1141	ARG
1	A	1274	ARG
1	A	1350	ILE
1	A	1366	HIS
1	A	1571	LEU
1	A	1593	CYS
1	A	1697	THR
1	A	1996	LYS
1	A	2173	THR
1	A	2392	LEU
1	A	2503	ARG
1	A	2548	PHE
1	B	659	LEU
1	B	662	VAL

Continued on next page...

Continued from previous page...

Mol	Chain	Res	Type
1	B	694	GLN
1	B	709	GLU
1	B	725	PHE
1	B	766	ARG
1	B	821	PHE
1	B	853	TYR
1	B	854	VAL
1	B	858	TYR
1	B	863	THR
1	B	890	LEU
1	B	1030	TYR
1	B	1113	LEU
1	B	1274	ARG
1	B	1348	GLN
1	B	1354	THR
1	B	1571	LEU
1	B	1593	CYS
1	B	1639	VAL
1	B	1697	THR
1	B	2145	ASP
1	B	2173	THR
1	B	2260	LEU
1	B	2392	LEU
1	B	2503	ARG
1	B	2509	THR
1	B	2548	PHE
2	C	27	TRP
2	C	42	ASP
2	C	106	ASP
2	C	110	ARG
2	C	214	THR
2	C	235	LEU
2	C	254	LEU
2	C	306	ARG
2	C	308	TYR
2	D	27	TRP
2	D	42	ASP
2	D	106	ASP
2	D	110	ARG
2	D	147	ASP
2	D	306	ARG
2	D	308	TYR

Continued on next page...

Continued from previous page...

Mol	Chain	Res	Type
3	E	47	ARG
3	E	89	ARG
3	E	180	ARG
3	E	343	THR
3	E	384	ARG
3	E	611	PHE
3	E	851	LEU
3	E	916	LYS
3	E	922	LYS
3	E	1516	THR
3	F	47	ARG
3	F	180	ARG
3	F	384	ARG
3	F	441	SER
3	F	629	ASP
3	F	702	VAL
3	F	765	THR
3	F	802	LEU
3	F	851	LEU
3	F	852	THR
3	F	1510	THR
4	G	24	THR
4	H	5	ASP
4	H	24	THR

Sometimes sidechains can be flipped to improve hydrogen bonding and reduce clashes. All (60) such sidechains are listed below:

Mol	Chain	Res	Type
1	A	612	ASN
1	A	791	ASN
1	A	797	ASN
1	A	838	GLN
1	A	1014	GLN
1	A	1112	HIS
1	A	1183	GLN
1	A	1333	GLN
1	A	1495	GLN
1	A	1670	HIS
1	A	1715	GLN
1	A	1726	GLN
1	A	2093	ASN
1	A	2147	ASN

Continued on next page...

Continued from previous page...

Mol	Chain	Res	Type
1	A	2385	ASN
1	A	2401	HIS
1	B	646	GLN
1	B	797	ASN
1	B	838	GLN
1	B	966	HIS
1	B	1014	GLN
1	B	1106	ASN
1	B	1112	HIS
1	B	1421	ASN
1	B	1525	GLN
1	B	1670	HIS
1	B	1722	GLN
1	B	2385	ASN
2	C	41	GLN
2	C	94	HIS
2	D	41	GLN
2	D	46	ASN
2	D	118	ASN
3	E	49	GLN
3	E	112	GLN
3	E	219	GLN
3	E	237	HIS
3	E	359	GLN
3	E	447	HIS
3	E	540	HIS
3	E	547	ASN
3	E	564	ASN
3	E	749	ASN
3	E	848	ASN
3	E	894	HIS
3	E	900	ASN
3	E	958	GLN
3	E	1674	GLN
3	F	112	GLN
3	F	145	GLN
3	F	219	GLN
3	F	264	HIS
3	F	359	GLN
3	F	418	HIS
3	F	539	GLN
3	F	848	ASN

Continued on next page...

Continued from previous page...

Mol	Chain	Res	Type
3	F	908	ASN
3	F	958	GLN
3	F	1535	ASN
4	G	107	GLN

5.3.3 RNA [i](#)

There are no RNA molecules in this entry.

5.4 Non-standard residues in protein, DNA, RNA chains [i](#)

There are no non-standard protein/DNA/RNA residues in this entry.

5.5 Carbohydrates [i](#)

There are no monosaccharides in this entry.

5.6 Ligand geometry [i](#)

Of 10 ligands modelled in this entry, 2 are monoatomic - leaving 8 for Mogul analysis.

In the following table, the Counts columns list the number of bonds (or angles) for which Mogul statistics could be retrieved, the number of bonds (or angles) that are observed in the model and the number of bonds (or angles) that are defined in the Chemical Component Dictionary. The Link column lists molecule types, if any, to which the group is linked. The Z score for a bond length (or angle) is the number of standard deviations the observed value is removed from the expected value. A bond length (or angle) with $|Z| > 2$ is considered an outlier worth inspection. RMSZ is the root-mean-square of all Z scores of the bond lengths (or angles).

Mol	Type	Chain	Res	Link	Bond lengths			Bond angles		
					Counts	RMSZ	# Z > 2	Counts	RMSZ	# Z > 2
6	IHP	B	2602	-	36,36,36	1.47	3 (8%)	54,60,60	1.03	5 (9%)
8	ACE	H	601	4	1,2,2	0.70	0	1,1,1	0.30	0
5	AGS	E	4802	-	26,33,33	1.89	6 (23%)	26,52,52	2.07	7 (26%)
8	ACE	G	601	4	1,2,2	0.79	0	1,1,1	0.23	0
5	AGS	A	2601	-	26,33,33	1.84	6 (23%)	26,52,52	2.05	7 (26%)
5	AGS	B	2601	-	26,33,33	1.85	6 (23%)	26,52,52	2.03	7 (26%)
5	AGS	F	4802	-	26,33,33	1.89	6 (23%)	26,52,52	2.11	7 (26%)
6	IHP	A	2602	-	36,36,36	1.47	3 (8%)	54,60,60	1.04	5 (9%)

In the following table, the Chirals column lists the number of chiral outliers, the number of chiral centers analysed, the number of these observed in the model and the number defined in the Chemical Component Dictionary. Similar counts are reported in the Torsion and Rings columns. '-' means no outliers of that kind were identified.

Mol	Type	Chain	Res	Link	Chirals	Torsions	Rings
6	IHP	B	2602	-	-	8/30/54/54	0/1/1/1
5	AGS	E	4802	-	-	1/17/38/38	0/3/3/3
5	AGS	A	2601	-	-	5/17/38/38	0/3/3/3
5	AGS	B	2601	-	-	5/17/38/38	0/3/3/3
5	AGS	F	4802	-	-	1/17/38/38	0/3/3/3
6	IHP	A	2602	-	-	8/30/54/54	0/1/1/1

All (30) bond length outliers are listed below:

Mol	Chain	Res	Type	Atoms	Z	Observed(Å)	Ideal(Å)
5	E	4802	AGS	C2-N3	5.06	1.40	1.32
5	F	4802	AGS	C2-N3	5.04	1.40	1.32
5	A	2601	AGS	C2-N3	5.01	1.40	1.32
5	B	2601	AGS	C2-N3	4.96	1.40	1.32
5	E	4802	AGS	O4'-C1'	4.45	1.47	1.41
5	F	4802	AGS	O4'-C1'	4.33	1.47	1.41
5	B	2601	AGS	O4'-C1'	3.96	1.46	1.41
5	A	2601	AGS	O4'-C1'	3.84	1.46	1.41
6	A	2602	IHP	P4-O24	3.67	1.62	1.50
6	B	2602	IHP	P4-O24	3.67	1.62	1.50
6	A	2602	IHP	P3-O23	3.30	1.61	1.50
5	F	4802	AGS	C2-N1	3.29	1.40	1.33
5	A	2601	AGS	C2-N1	3.27	1.40	1.33
5	B	2601	AGS	C2-N1	3.26	1.40	1.33
6	A	2602	IHP	P6-O26	3.25	1.61	1.50
6	B	2602	IHP	P3-O23	3.23	1.61	1.50
6	B	2602	IHP	P6-O26	3.22	1.60	1.50
5	E	4802	AGS	C2-N1	3.19	1.39	1.33
5	B	2601	AGS	C5-C4	-2.76	1.33	1.40
5	A	2601	AGS	C5-C4	-2.72	1.33	1.40
5	B	2601	AGS	C6-C5	-2.68	1.33	1.43
5	A	2601	AGS	C6-C5	-2.65	1.33	1.43
5	F	4802	AGS	C5-C4	-2.63	1.34	1.40
5	E	4802	AGS	C5-C4	-2.63	1.34	1.40
5	F	4802	AGS	C6-C5	-2.60	1.33	1.43
5	E	4802	AGS	C6-C5	-2.58	1.33	1.43
5	A	2601	AGS	PG-O2G	2.36	1.62	1.54
5	B	2601	AGS	PG-O2G	2.34	1.62	1.54

Continued on next page...

Continued from previous page...

Mol	Chain	Res	Type	Atoms	Z	Observed(Å)	Ideal(Å)
5	F	4802	AGS	PG-O2G	2.32	1.62	1.54
5	E	4802	AGS	PG-O2G	2.30	1.62	1.54

All (38) bond angle outliers are listed below:

Mol	Chain	Res	Type	Atoms	Z	Observed(°)	Ideal(°)
5	A	2601	AGS	N3-C2-N1	-6.93	117.85	128.68
5	F	4802	AGS	N3-C2-N1	-6.92	117.86	128.68
5	B	2601	AGS	N3-C2-N1	-6.92	117.87	128.68
5	E	4802	AGS	N3-C2-N1	-6.88	117.93	128.68
5	F	4802	AGS	PA-O3A-PB	-3.45	120.98	132.83
5	E	4802	AGS	PA-O3A-PB	-3.36	121.29	132.83
5	F	4802	AGS	C2'-C3'-C4'	-3.31	96.20	102.64
5	A	2601	AGS	PA-O3A-PB	-3.28	121.56	132.83
5	B	2601	AGS	C2'-C3'-C4'	-3.23	96.38	102.64
5	B	2601	AGS	PA-O3A-PB	-3.22	121.79	132.83
5	A	2601	AGS	C2'-C3'-C4'	-3.21	96.41	102.64
5	E	4802	AGS	C2'-C3'-C4'	-3.18	96.47	102.64
6	A	2602	IHP	O43-P3-O33	3.07	119.35	107.64
6	B	2602	IHP	O43-P3-O33	3.04	119.24	107.64
6	B	2602	IHP	O46-P6-O36	3.03	119.23	107.64
6	A	2602	IHP	O46-P6-O36	3.00	119.11	107.64
5	F	4802	AGS	O4'-C4'-C3'	-2.99	99.20	105.11
5	B	2601	AGS	C5-C6-N6	-2.85	116.02	120.35
5	A	2601	AGS	C5-C6-N6	-2.82	116.07	120.35
5	F	4802	AGS	C5-C6-N6	-2.72	116.21	120.35
5	E	4802	AGS	C5-C6-N6	-2.68	116.28	120.35
5	E	4802	AGS	C1'-N9-C4	2.66	131.32	126.64
5	E	4802	AGS	O4'-C4'-C3'	-2.60	99.97	105.11
5	A	2601	AGS	O4'-C4'-C3'	-2.49	100.19	105.11
5	F	4802	AGS	C1'-N9-C4	2.48	131.00	126.64
5	A	2601	AGS	C1'-N9-C4	-2.45	122.34	126.64
5	B	2601	AGS	O4'-C4'-C3'	-2.42	100.32	105.11
6	A	2602	IHP	O45-P5-O25	2.26	119.53	110.68
6	B	2602	IHP	O45-P5-O25	2.26	119.52	110.68
6	B	2602	IHP	O41-P1-O21	2.24	119.46	110.68
6	A	2602	IHP	O41-P1-O21	2.23	119.42	110.68
6	B	2602	IHP	O32-P2-O22	2.21	119.34	110.68
6	A	2602	IHP	O32-P2-O22	2.21	119.32	110.68
5	B	2601	AGS	C1'-N9-C4	-2.18	122.82	126.64
5	B	2601	AGS	O3G-PG-O3B	2.16	111.86	104.64
5	A	2601	AGS	O3G-PG-O3B	2.13	111.76	104.64

Continued on next page...

Continued from previous page...

Mol	Chain	Res	Type	Atoms	Z	Observed(°)	Ideal(°)
5	F	4802	AGS	O3G-PG-O3B	2.09	111.61	104.64
5	E	4802	AGS	O3G-PG-O3B	2.05	111.49	104.64

There are no chirality outliers.

All (28) torsion outliers are listed below:

Mol	Chain	Res	Type	Atoms
5	A	2601	AGS	PB-O3B-PG-O3G
5	B	2601	AGS	PB-O3B-PG-O3G
5	E	4802	AGS	C5'-O5'-PA-O1A
5	F	4802	AGS	C5'-O5'-PA-O1A
5	A	2601	AGS	PA-O3A-PB-O3B
5	B	2601	AGS	PA-O3A-PB-O3B
5	B	2601	AGS	O4'-C4'-C5'-O5'
5	A	2601	AGS	O4'-C4'-C5'-O5'
6	A	2602	IHP	C2-O12-P2-O22
6	A	2602	IHP	C4-O14-P4-O24
6	B	2602	IHP	C2-O12-P2-O22
6	B	2602	IHP	C4-O14-P4-O24
6	B	2602	IHP	C2-C3-O13-P3
6	A	2602	IHP	C2-C3-O13-P3
6	A	2602	IHP	C6-O16-P6-O26
6	B	2602	IHP	C6-O16-P6-O26
6	A	2602	IHP	C2-O12-P2-O32
6	A	2602	IHP	C4-O14-P4-O34
6	A	2602	IHP	C5-O15-P5-O45
6	A	2602	IHP	C6-O16-P6-O36
6	B	2602	IHP	C4-C3-O13-P3
6	B	2602	IHP	C4-O14-P4-O34
6	B	2602	IHP	C5-O15-P5-O45
6	B	2602	IHP	C6-O16-P6-O36
5	A	2601	AGS	PA-O3A-PB-O1B
5	B	2601	AGS	PA-O3A-PB-O1B
5	A	2601	AGS	C5'-O5'-PA-O1A
5	B	2601	AGS	C5'-O5'-PA-O1A

There are no ring outliers.

5 monomers are involved in 7 short contacts:

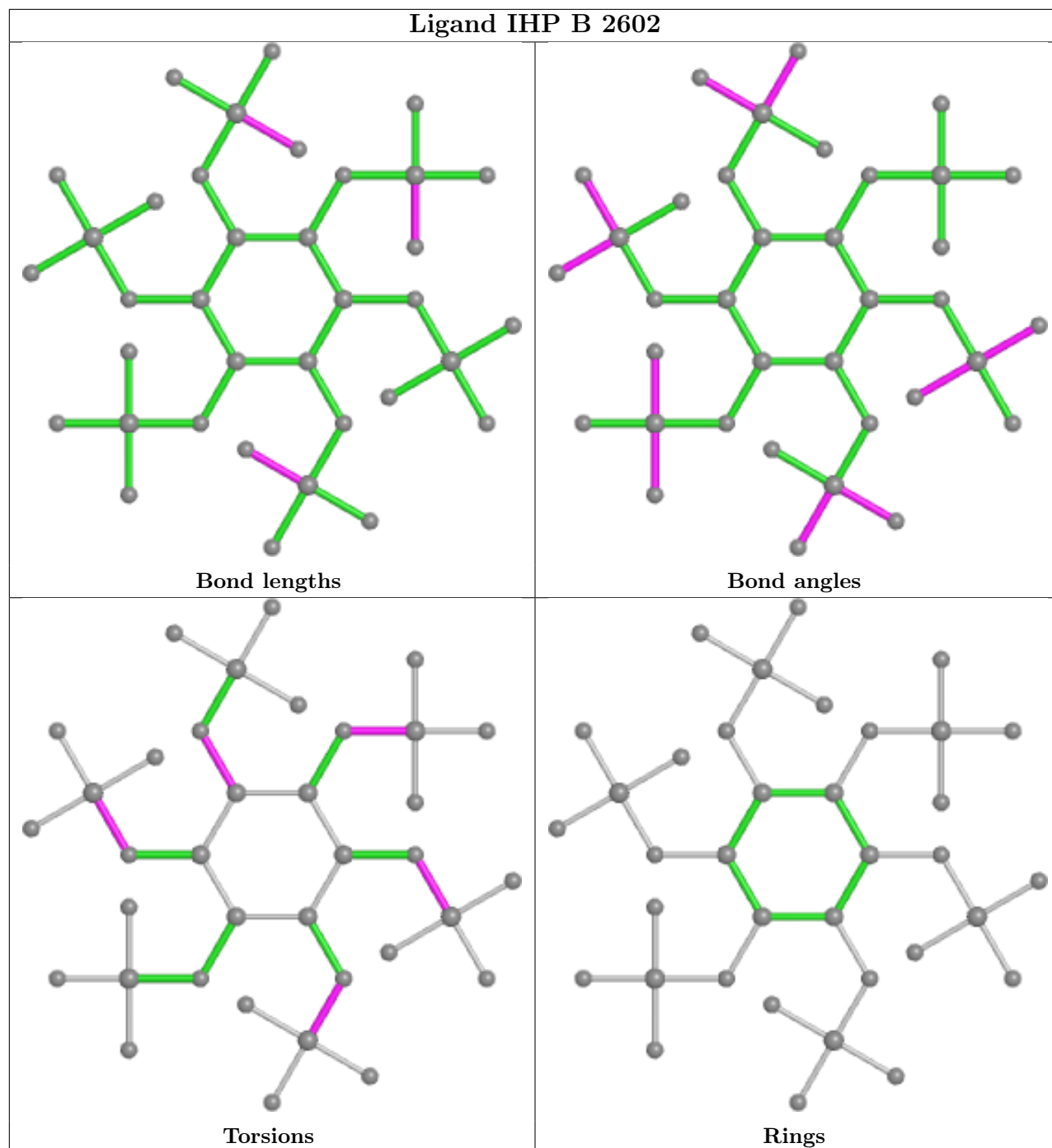
Mol	Chain	Res	Type	Clashes	Symm-Clashes
6	B	2602	IHP	2	0

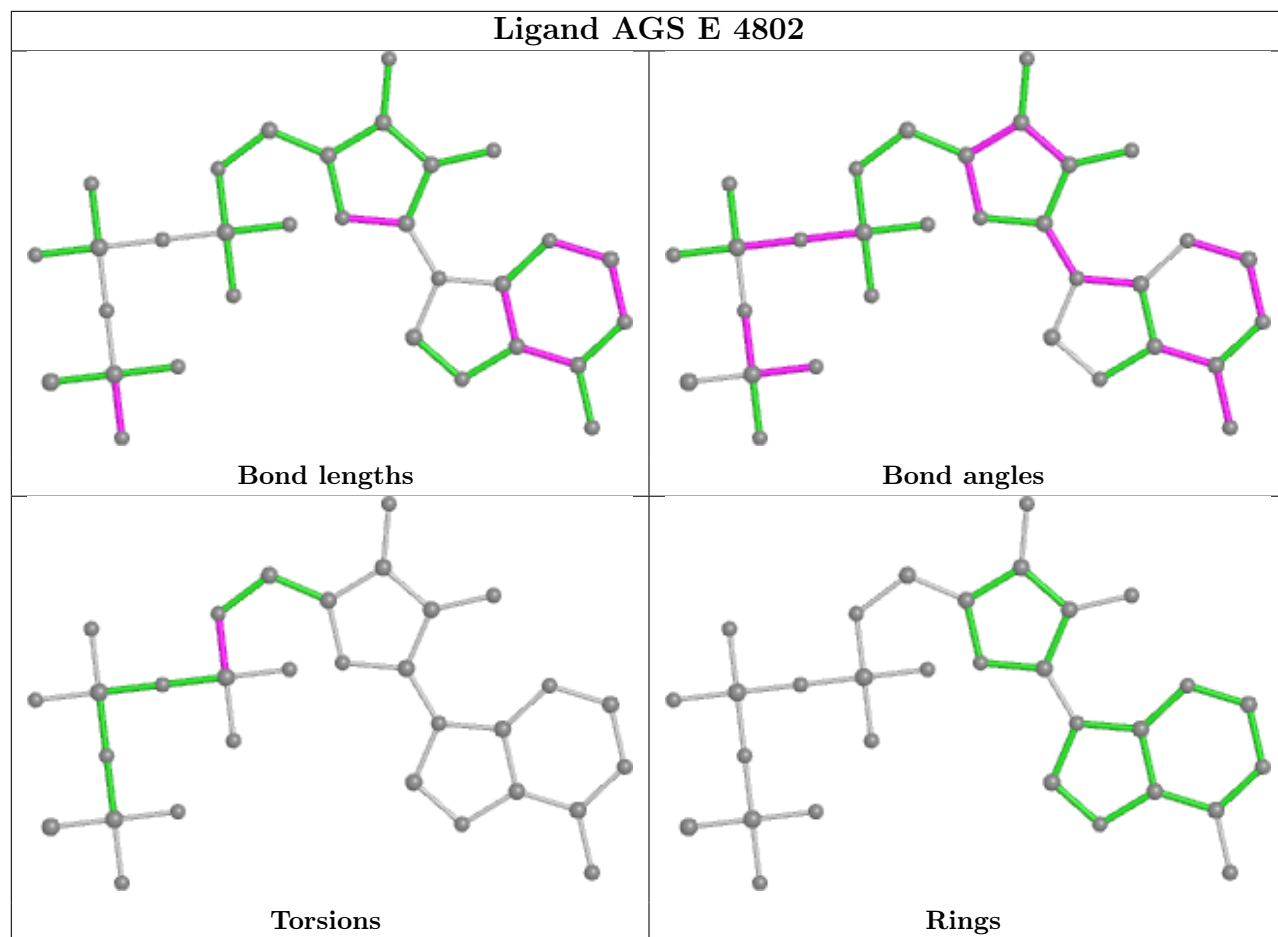
Continued on next page...

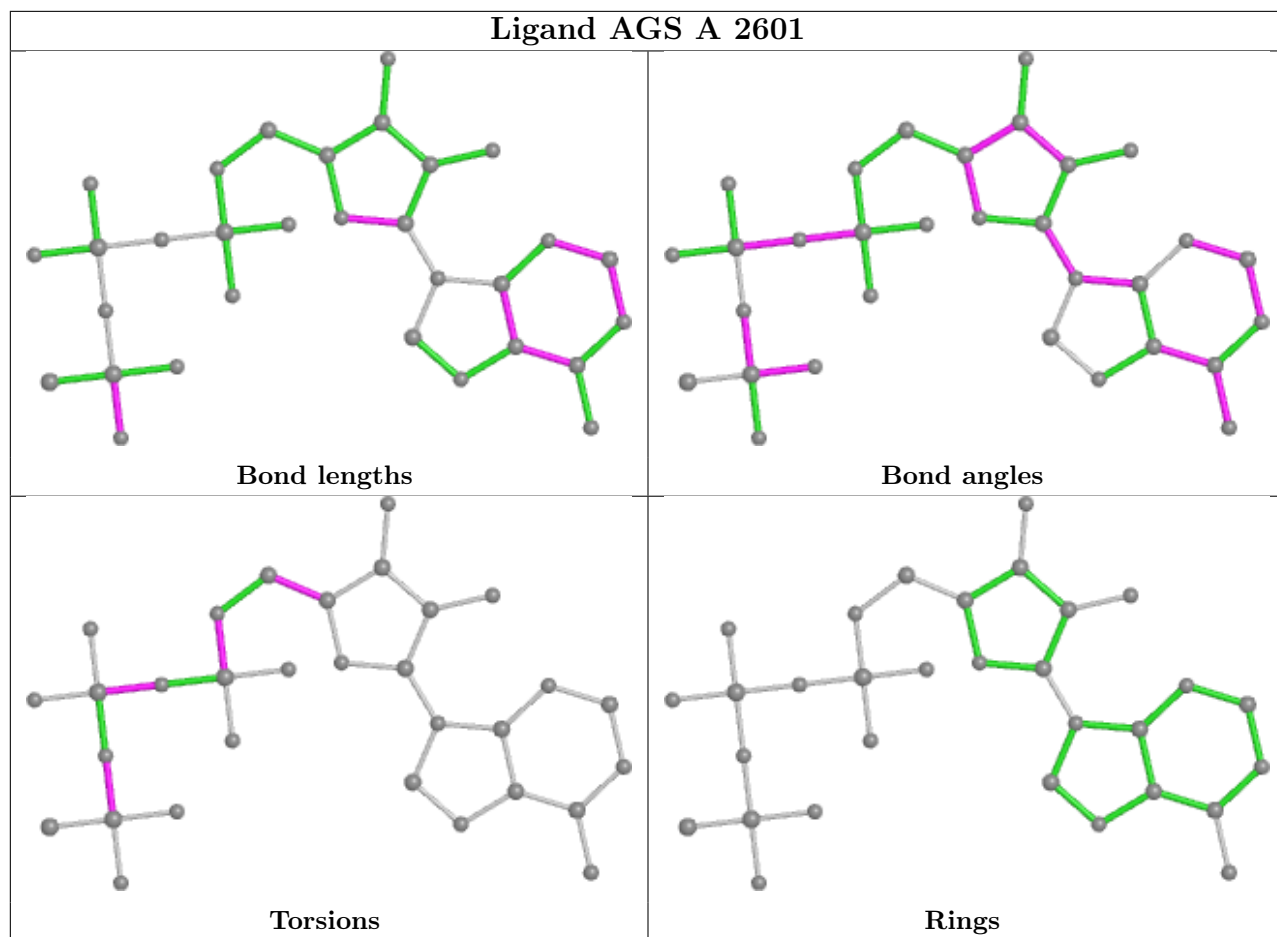
Continued from previous page...

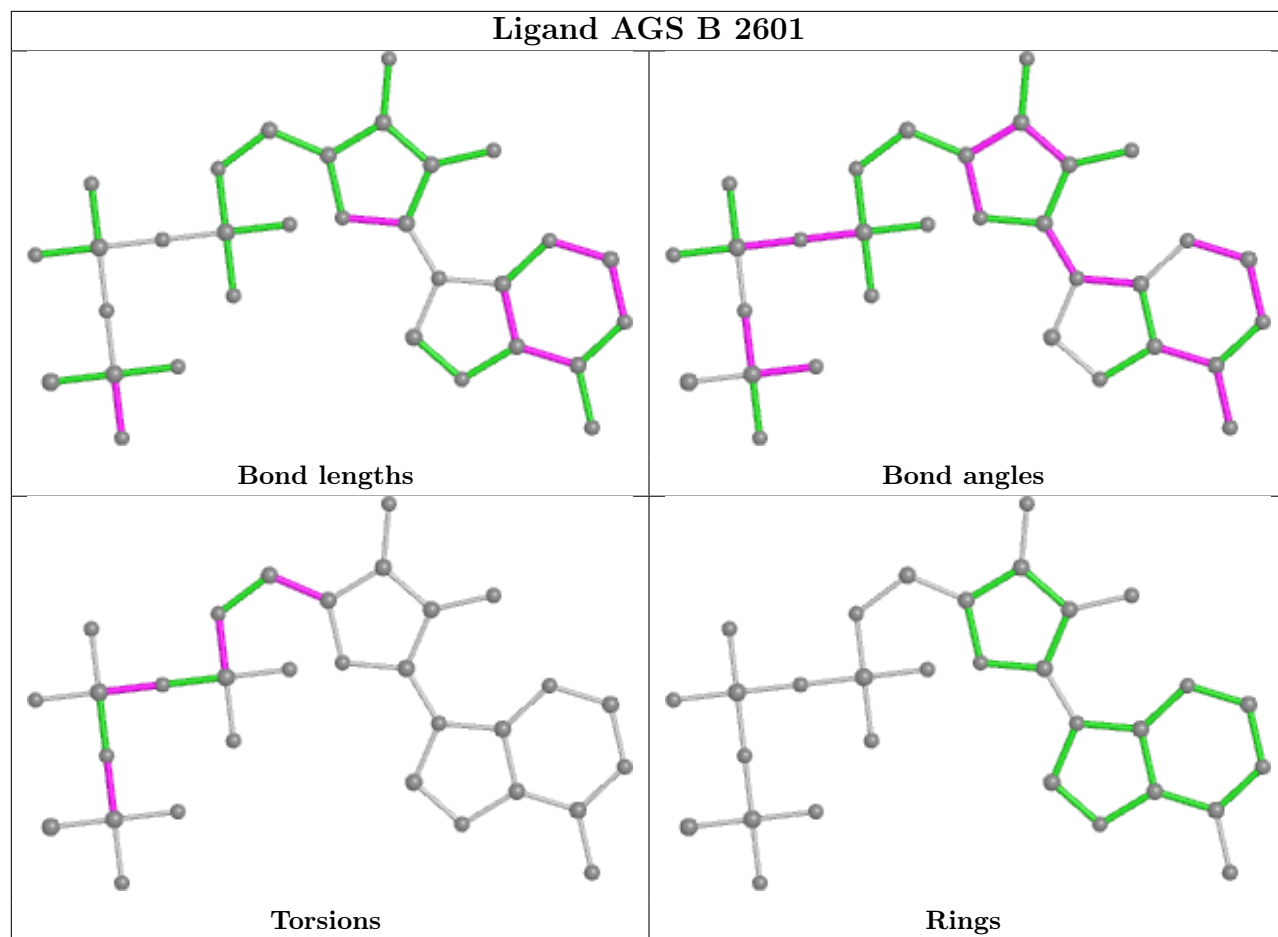
Mol	Chain	Res	Type	Clashes	Symm-Clashes
5	E	4802	AGS	1	0
5	A	2601	AGS	1	0
5	F	4802	AGS	1	0
6	A	2602	IHP	2	0

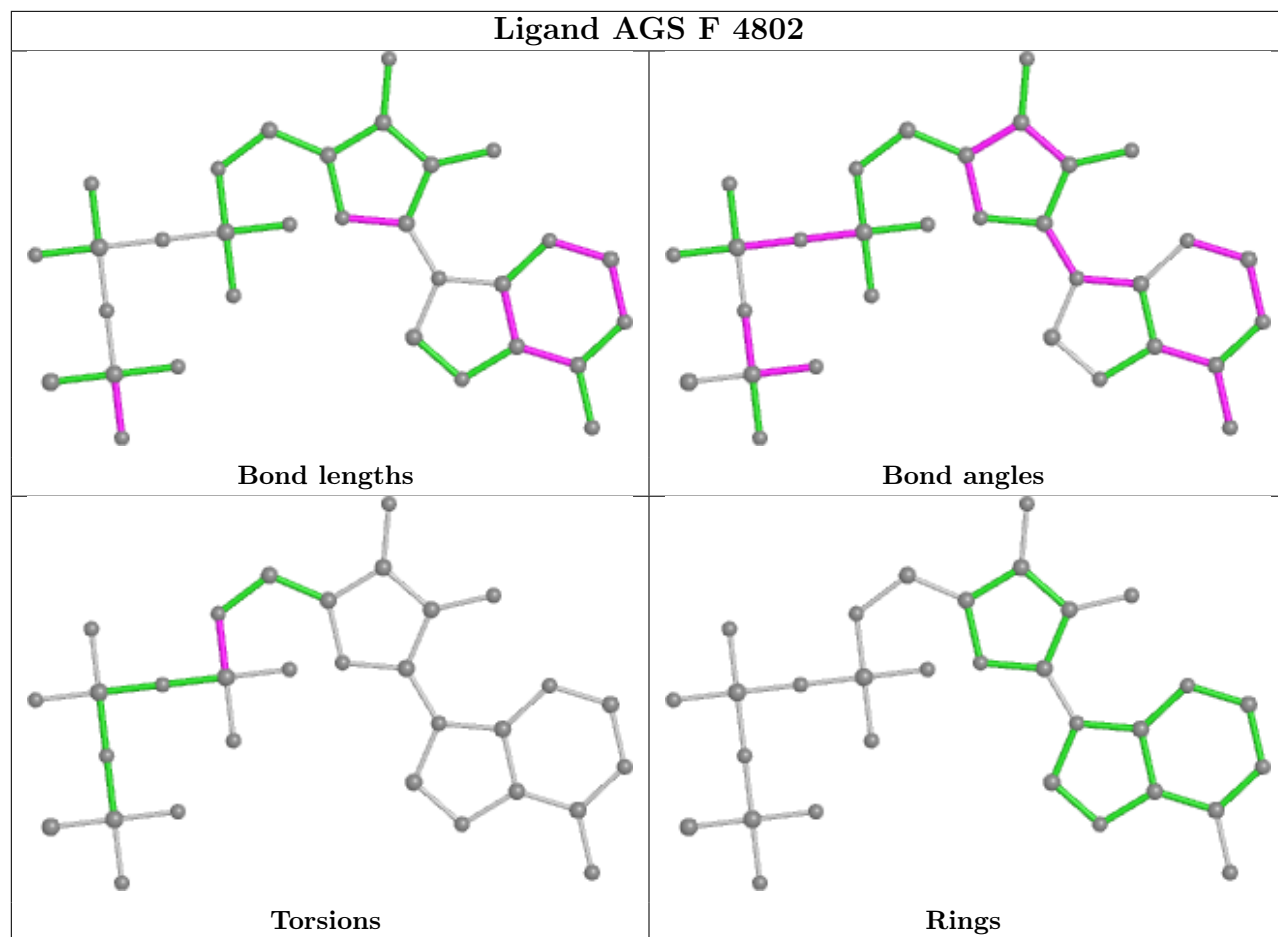
The following is a two-dimensional graphical depiction of Mogul quality analysis of bond lengths, bond angles, torsion angles, and ring geometry for all instances of the Ligand of Interest. In addition, ligands with molecular weight > 250 and outliers as shown on the validation Tables will also be included. For torsion angles, if less than 5% of the Mogul distribution of torsion angles is within 10 degrees of the torsion angle in question, then that torsion angle is considered an outlier. Any bond that is central to one or more torsion angles identified as an outlier by Mogul will be highlighted in the graph. For rings, the root-mean-square deviation (RMSD) between the ring in question and similar rings identified by Mogul is calculated over all ring torsion angles. If the average RMSD is greater than 60 degrees and the minimal RMSD between the ring in question and any Mogul-identified rings is also greater than 60 degrees, then that ring is considered an outlier. The outliers are highlighted in purple. The color gray indicates Mogul did not find sufficient equivalents in the CSD to analyse the geometry.

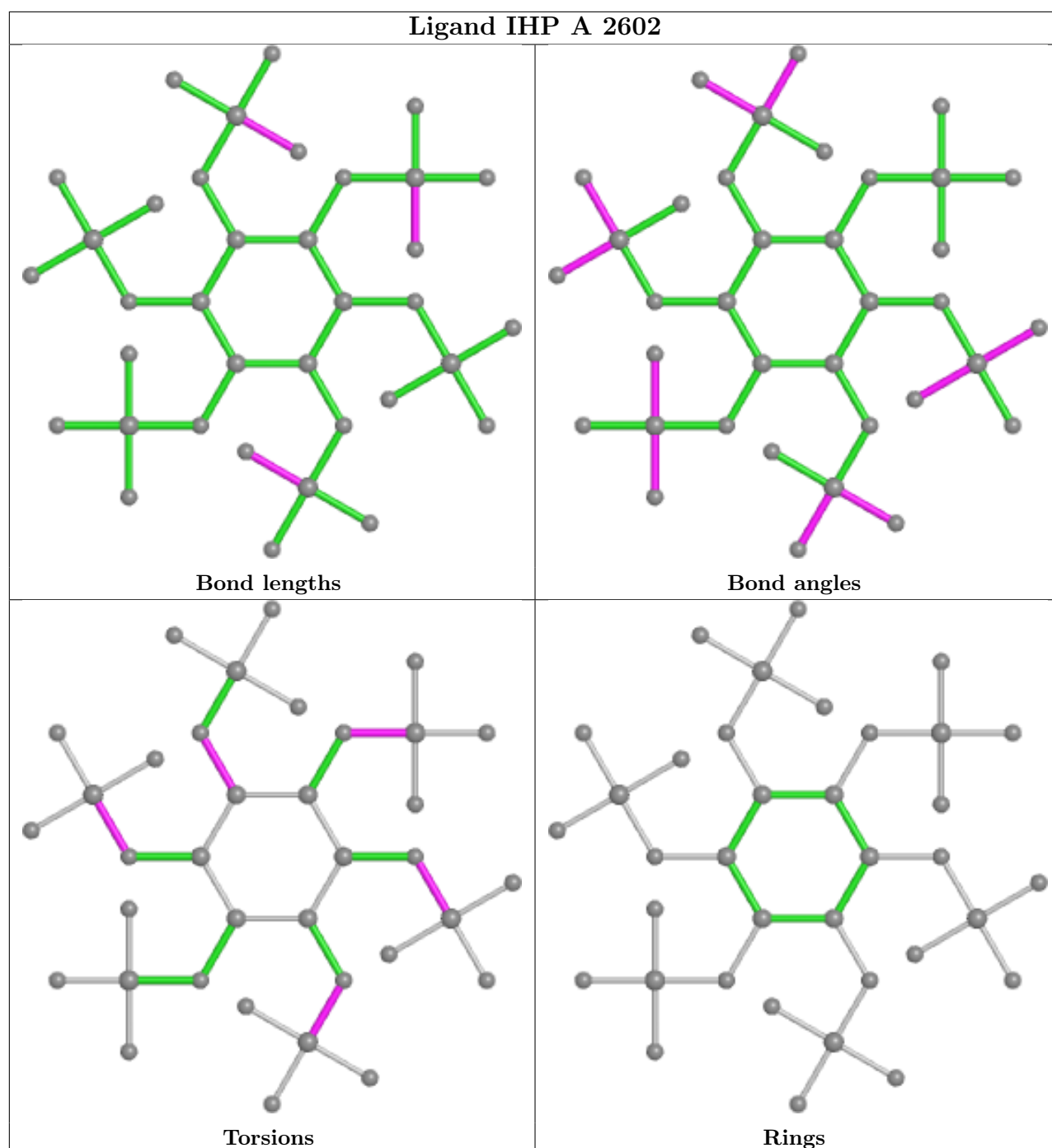












5.7 Other polymers [i](#)

There are no such residues in this entry.

5.8 Polymer linkage issues [i](#)

There are no chain breaks in this entry.

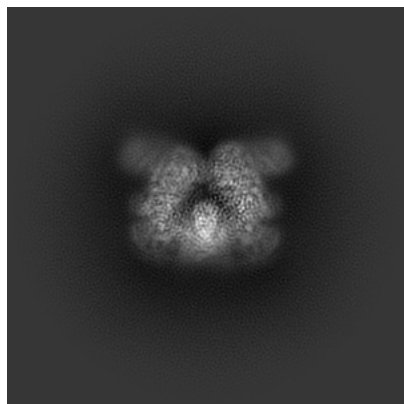
6 Map visualisation [i](#)

This section contains visualisations of the EMDB entry EMD-11488. These allow visual inspection of the internal detail of the map and identification of artifacts.

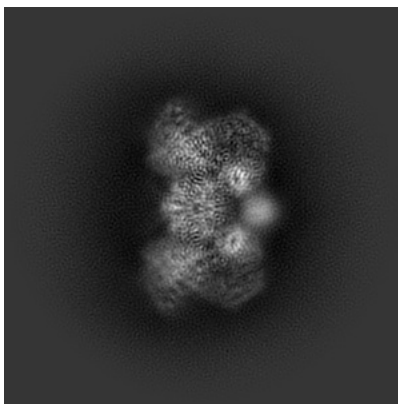
Images derived from a raw map, generated by summing the deposited half-maps, are presented below the corresponding image components of the primary map to allow further visual inspection and comparison with those of the primary map.

6.1 Orthogonal projections [i](#)

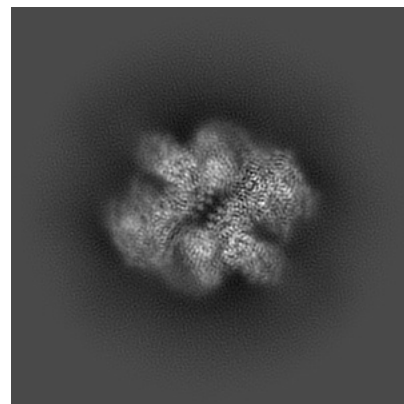
6.1.1 Primary map



X

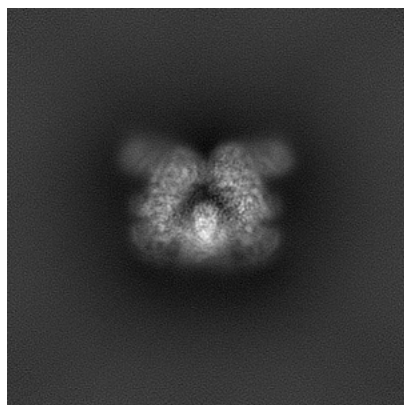


Y

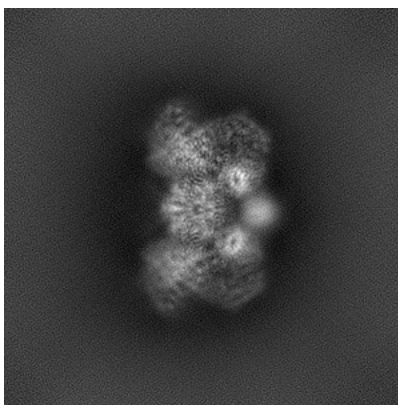


Z

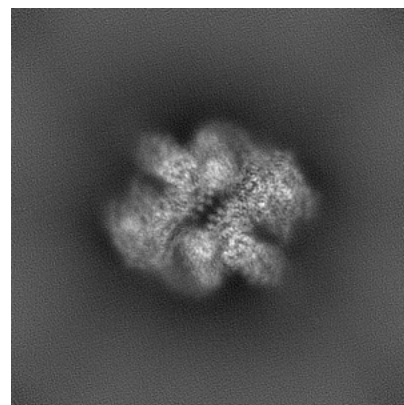
6.1.2 Raw map



X



Y

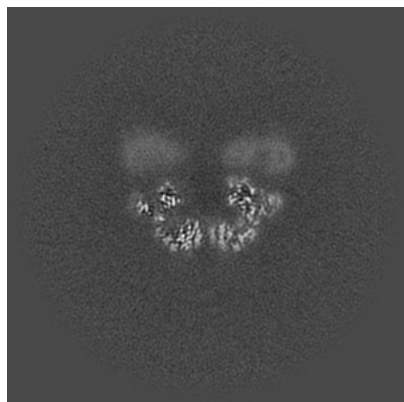


Z

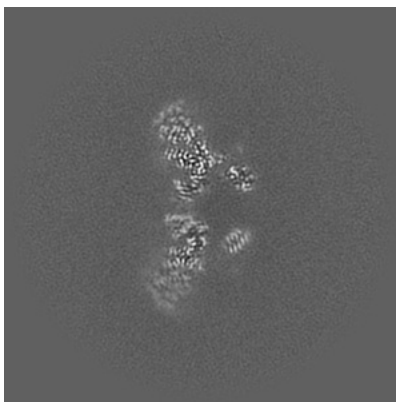
The images above show the map projected in three orthogonal directions.

6.2 Central slices [i](#)

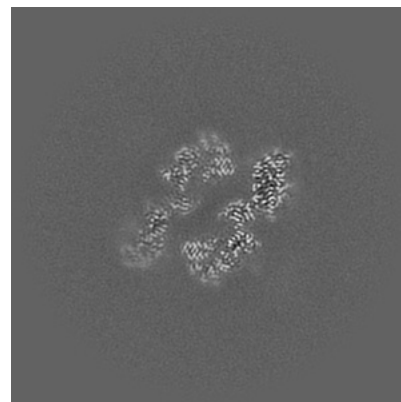
6.2.1 Primary map



X Index: 160

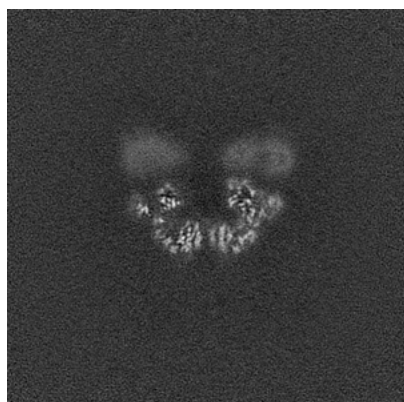


Y Index: 160



Z Index: 160

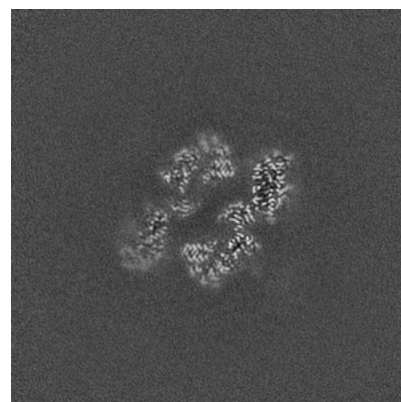
6.2.2 Raw map



X Index: 160



Y Index: 160

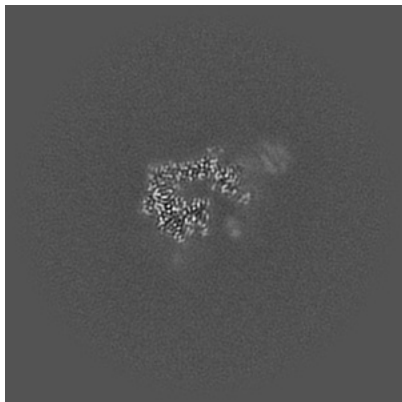


Z Index: 160

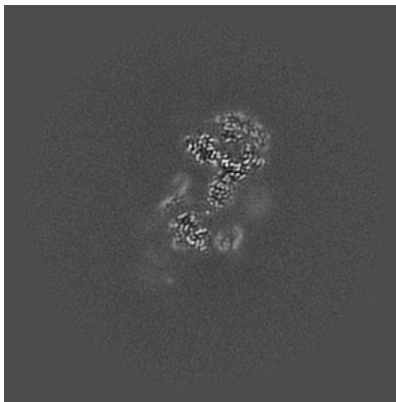
The images above show central slices of the map in three orthogonal directions.

6.3 Largest variance slices [i](#)

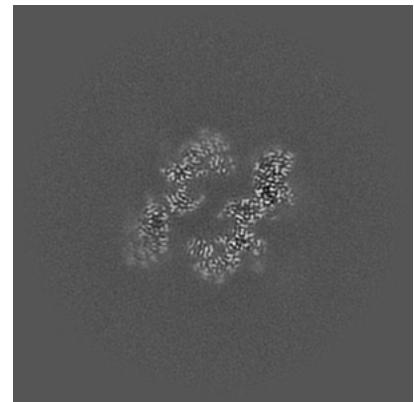
6.3.1 Primary map



X Index: 179

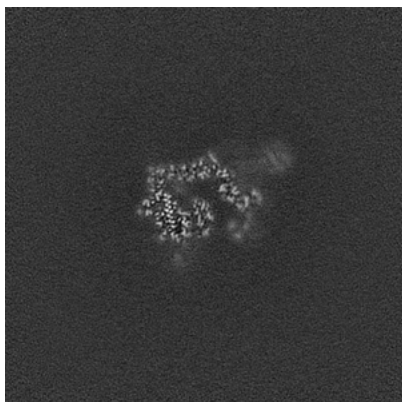


Y Index: 182

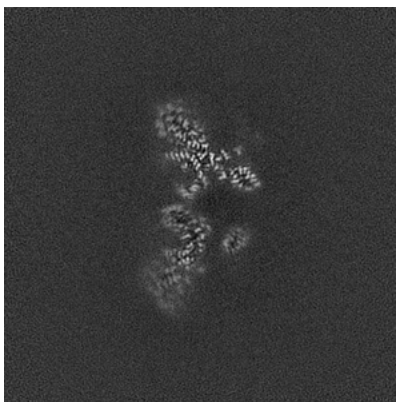


Z Index: 157

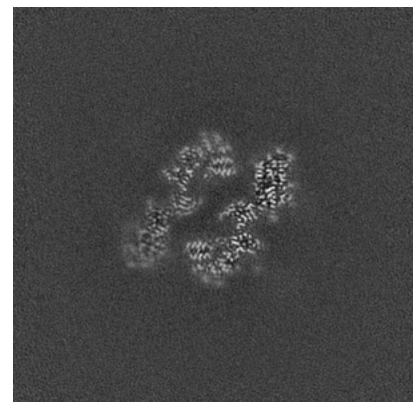
6.3.2 Raw map



X Index: 176



Y Index: 163



Z Index: 159

The images above show the largest variance slices of the map in three orthogonal directions.

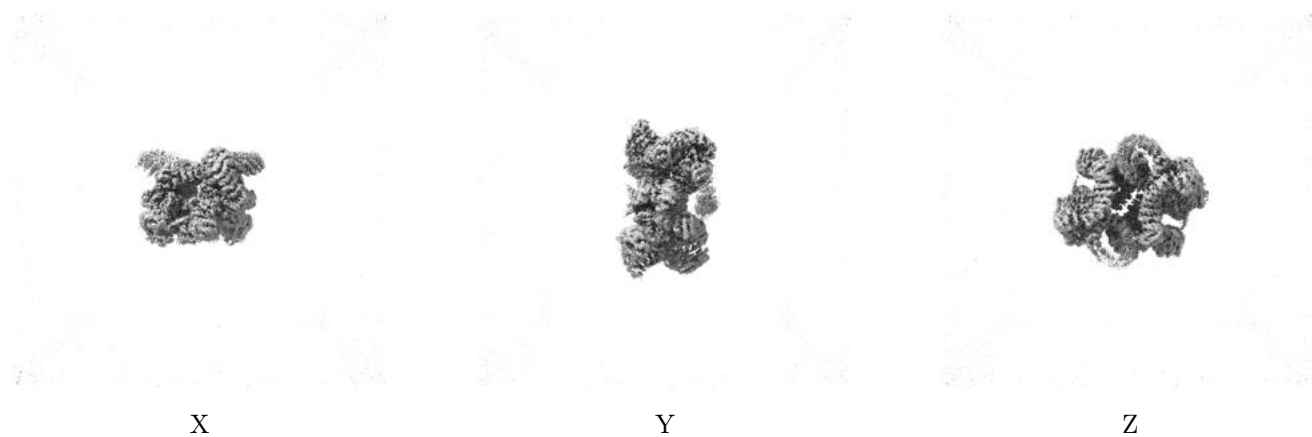
6.4 Orthogonal surface views [i](#)

6.4.1 Primary map



The images above show the 3D surface view of the map at the recommended contour level 0.375. These images, in conjunction with the slice images, may facilitate assessment of whether an appropriate contour level has been provided.

6.4.2 Raw map



These images show the 3D surface of the raw map. The raw map's contour level was selected so that its surface encloses the same volume as the primary map does at its recommended contour level.

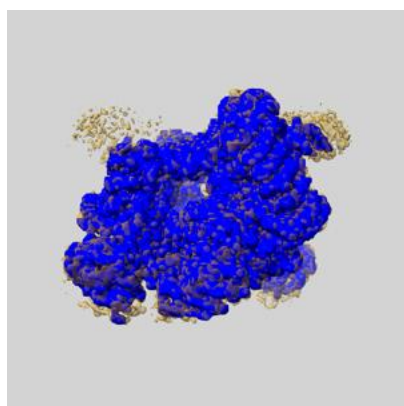
6.5 Mask visualisation [i](#)

This section shows the 3D surface view of the primary map at 50% transparency overlaid with the specified mask at 0% transparency

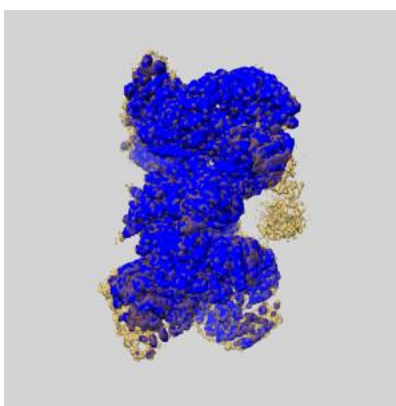
A mask typically either:

- Encompasses the whole structure
- Separates out a domain, a functional unit, a monomer or an area of interest from a larger structure

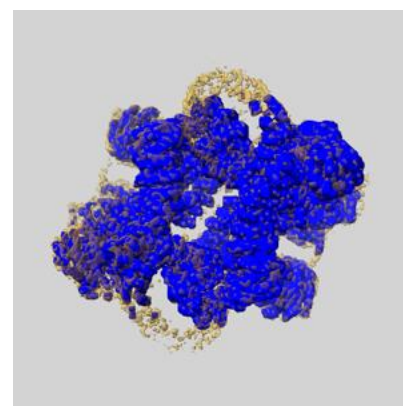
6.5.1 emd_11488_msk_2.map [i](#)



X

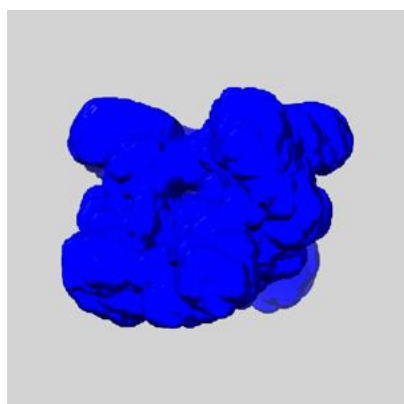


Y

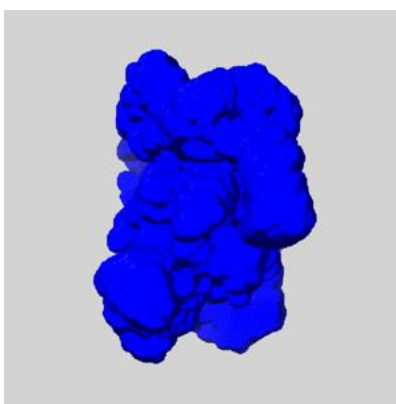


Z

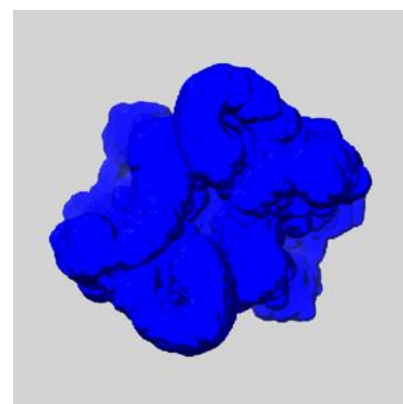
6.5.2 emd_11488_msk_1.map [i](#)



X



Y

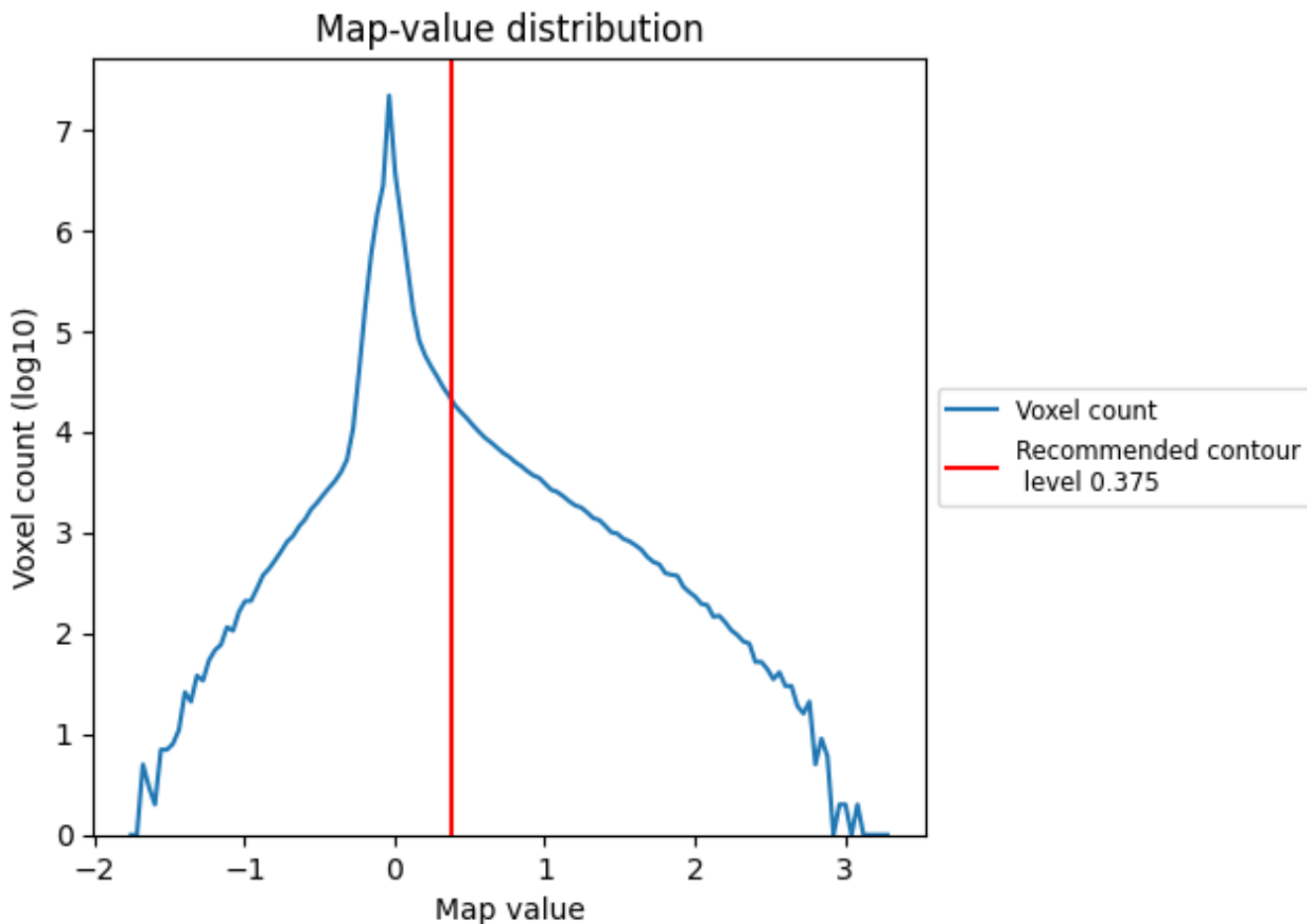


Z

7 Map analysis [i](#)

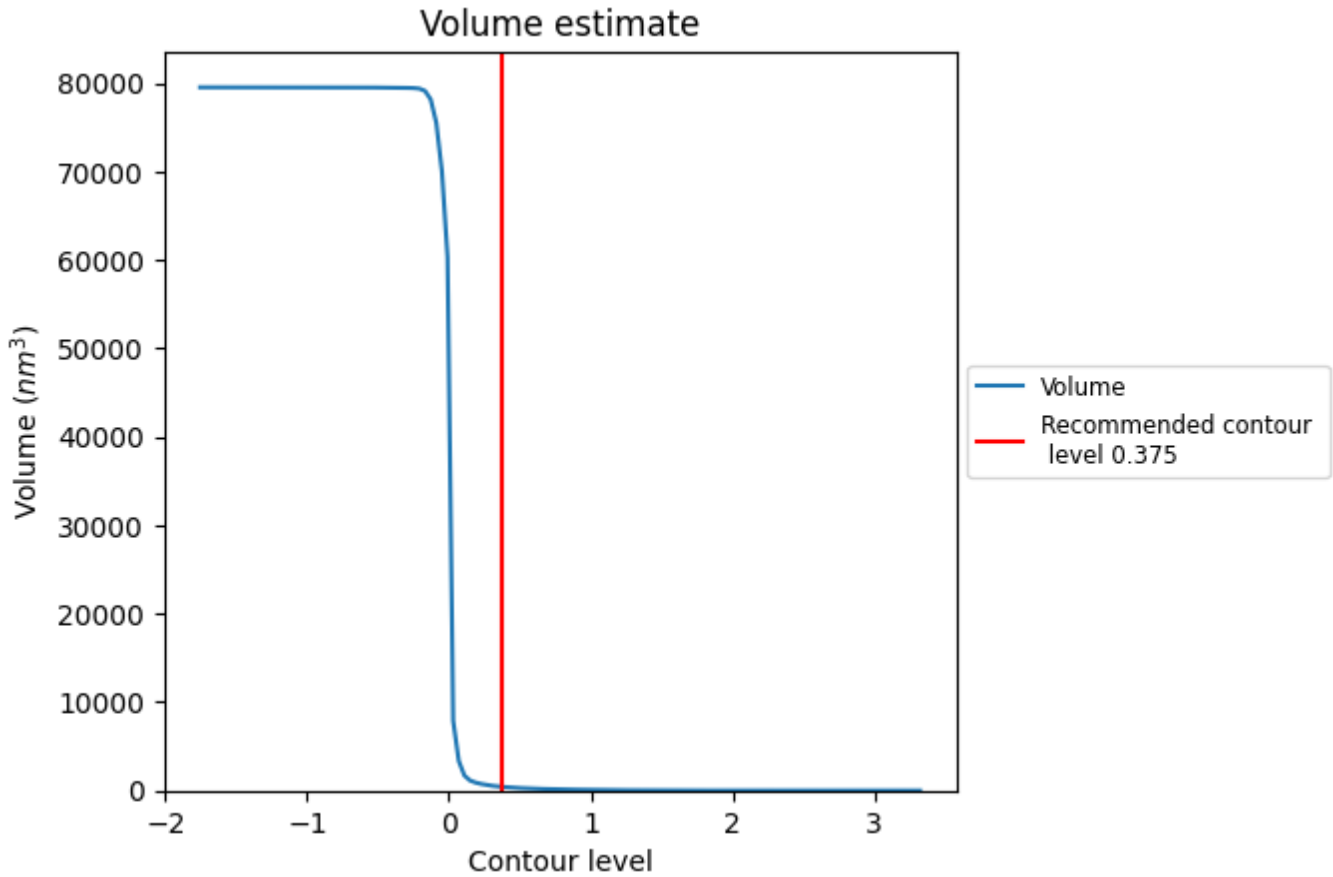
This section contains the results of statistical analysis of the map.

7.1 Map-value distribution [i](#)



The map-value distribution is plotted in 128 intervals along the x-axis. The y-axis is logarithmic. A spike in this graph at zero usually indicates that the volume has been masked.

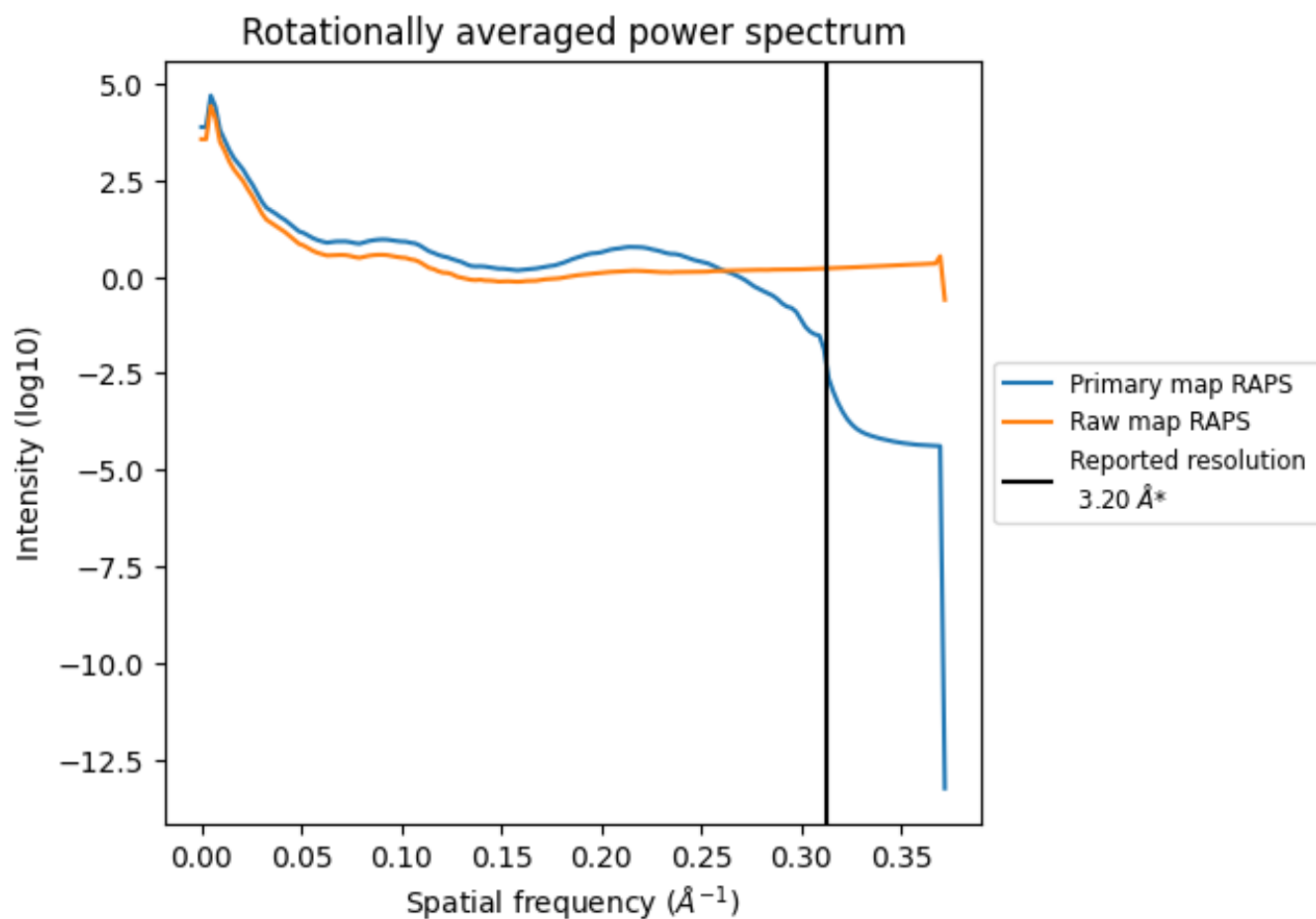
7.2 Volume estimate [i](#)



The volume at the recommended contour level is 419 nm³; this corresponds to an approximate mass of 379 kDa.

The volume estimate graph shows how the enclosed volume varies with the contour level. The recommended contour level is shown as a vertical line and the intersection between the line and the curve gives the volume of the enclosed surface at the given level.

7.3 Rotationally averaged power spectrum i

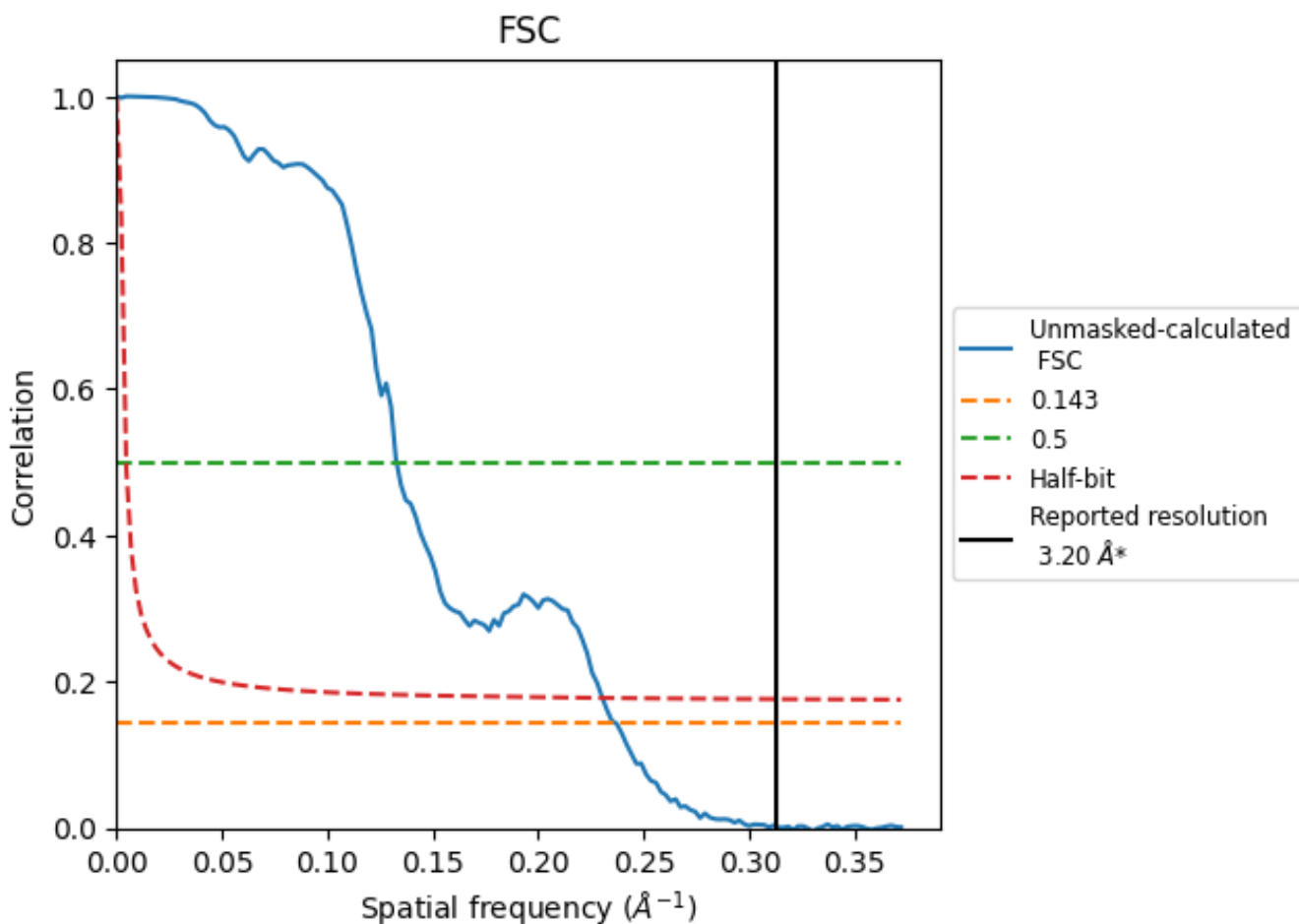


*Reported resolution corresponds to spatial frequency of 0.312 \AA^{-1}

8 Fourier-Shell correlation [i](#)

Fourier-Shell Correlation (FSC) is the most commonly used method to estimate the resolution of single-particle and subtomogram-averaged maps. The shape of the curve depends on the imposed symmetry, mask and whether or not the two 3D reconstructions used were processed from a common reference. The reported resolution is shown as a black line. A curve is displayed for the half-bit criterion in addition to lines showing the 0.143 gold standard cut-off and 0.5 cut-off.

8.1 FSC [i](#)



*Reported resolution corresponds to spatial frequency of 0.312 Å⁻¹

8.2 Resolution estimates [i](#)

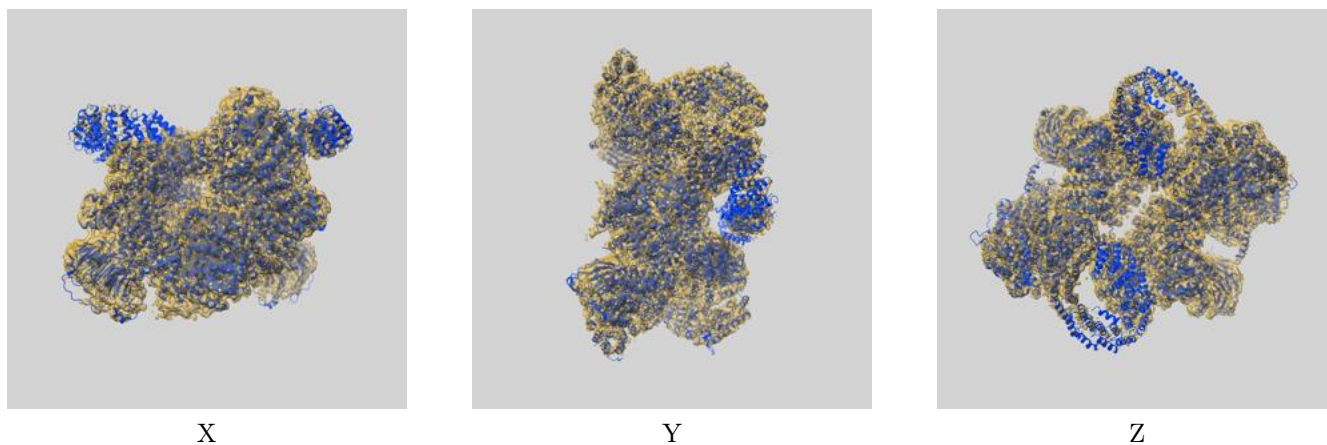
Resolution estimate (Å)	Estimation criterion (FSC cut-off)		
	0.143	0.5	Half-bit
Reported by author	3.20	-	-
Author-provided FSC curve	-	-	-
Unmasked-calculated*	4.22	7.53	4.34

*Resolution estimate based on FSC curve calculated by comparison of deposited half-maps. The value from deposited half-maps intersecting FSC 0.143 CUT-OFF 4.22 differs from the reported value 3.2 by more than 10 %

9 Map-model fit [i](#)

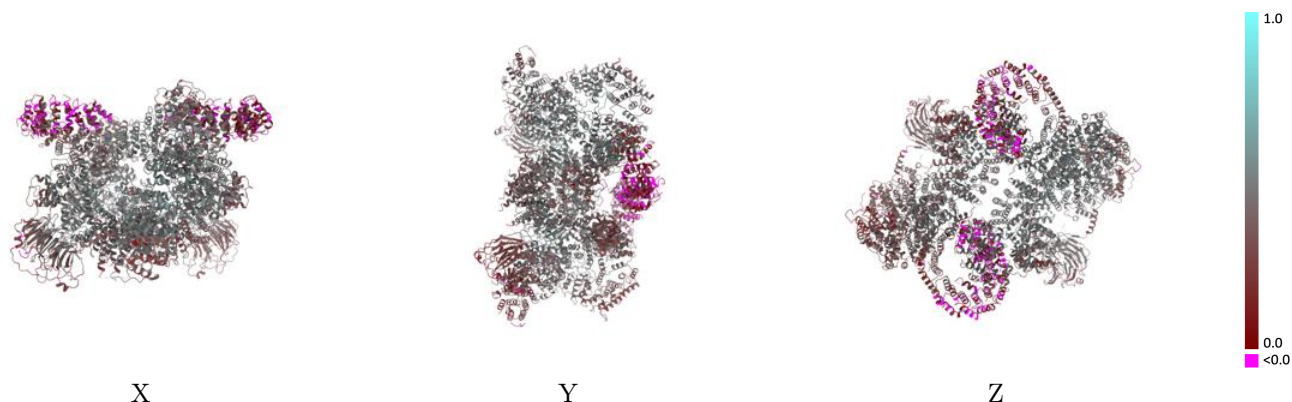
This section contains information regarding the fit between EMDB map EMD-11488 and PDB model 6ZWM. Per-residue inclusion information can be found in section 3 on page 6.

9.1 Map-model overlay [i](#)



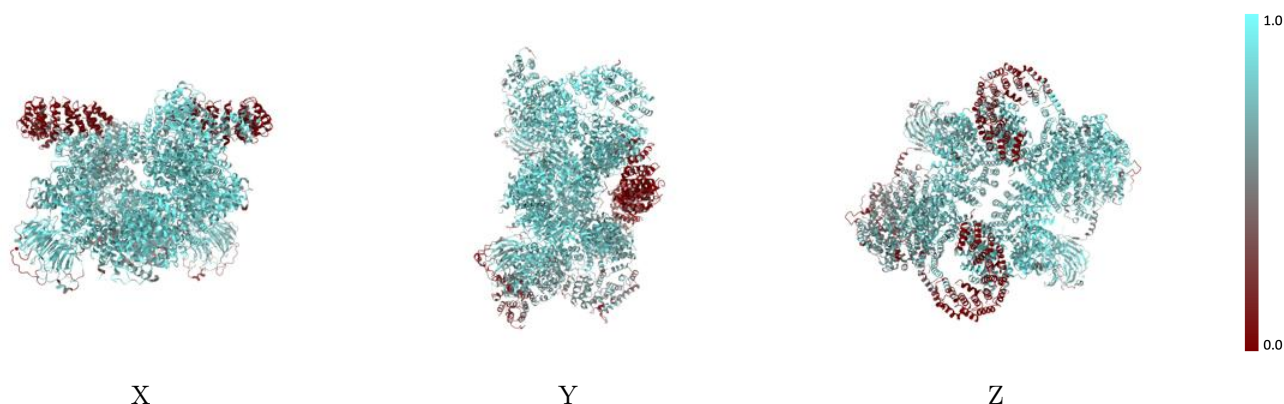
The images above show the 3D surface view of the map at the recommended contour level 0.375 at 50% transparency in yellow overlaid with a ribbon representation of the model coloured in blue. These images allow for the visual assessment of the quality of fit between the atomic model and the map.

9.2 Q-score mapped to coordinate model [i](#)



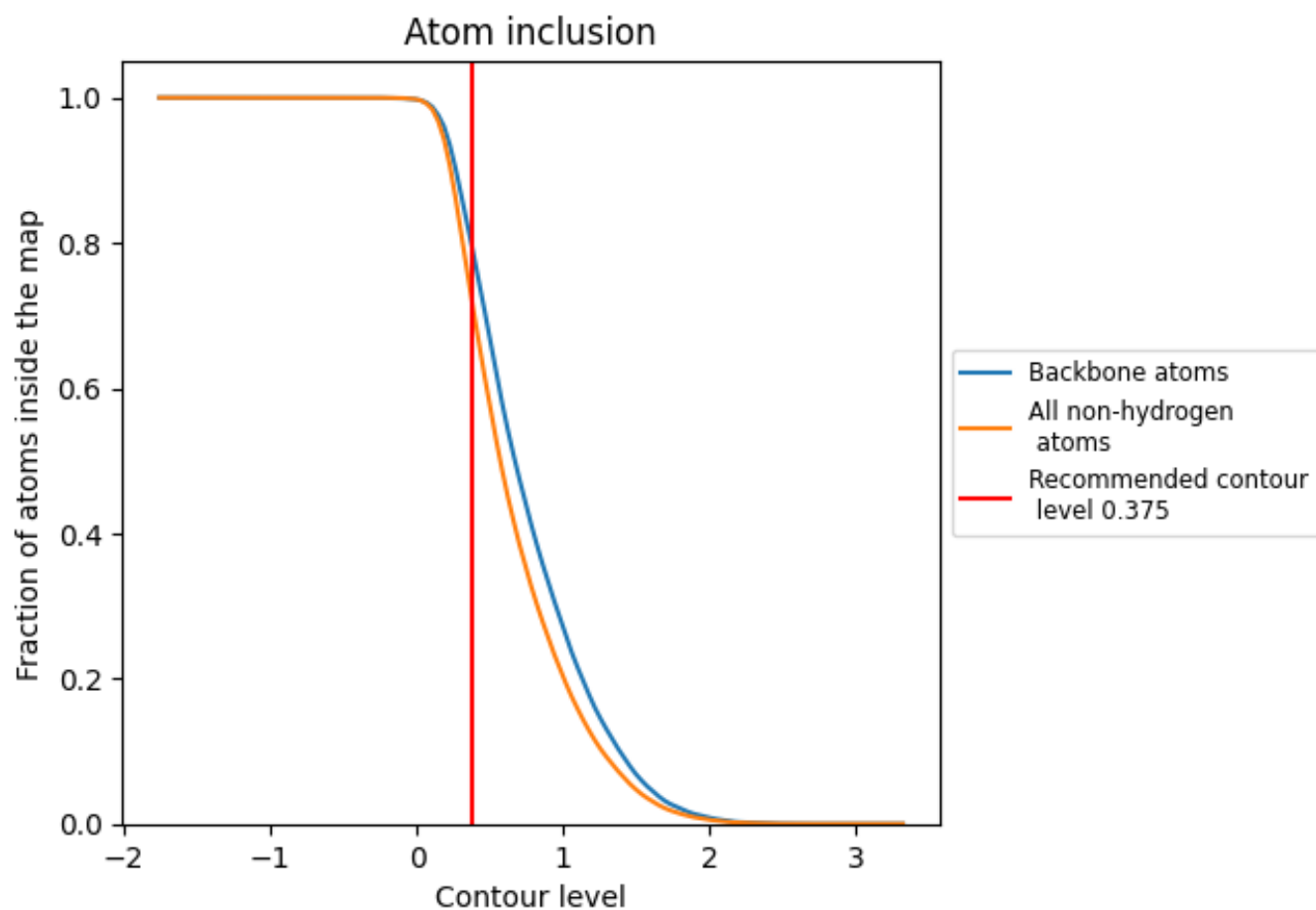
The images above show the model with each residue coloured according to its Q-score. This shows their resolvability in the map with higher Q-score values reflecting better resolvability. Please note: Q-score is calculating the resolvability of atoms, and thus high values are only expected at resolutions at which atoms can be resolved. Low Q-score values may therefore be expected for many entries.

9.3 Atom inclusion mapped to coordinate model [i](#)



The images above show the model with each residue coloured according to its atom inclusion. This shows to what extent they are inside the map at the recommended contour level (0.375).



















9.4 Atom inclusion [i](#)



At the recommended contour level, 80% of all backbone atoms, 72% of all non-hydrogen atoms, are inside the map.

9.5 Map-model fit summary

The table lists the average atom inclusion at the recommended contour level (0.375) and Q-score for the entire model and for each chain.

Chain	Atom inclusion	Q-score
All	 0.7247	 0.3960
A	 0.7371	 0.3860
B	 0.7523	 0.4130
C	 0.6639	 0.3020
D	 0.7608	 0.3740
E	 0.5833	 0.3580
F	 0.8290	 0.4600
G	 0.4074	 0.3060
H	 0.6466	 0.3700

