



wwPDB EM Validation Summary Report ⓘ

Dec 18, 2022 – 07:01 am GMT

PDB ID : 7ZX7
EMDB ID : EMD-15006
Title : Structure of SNAPc containing Pol II pre-initiation complex bound to U1 snRNA promoter (CC)
Authors : Rengachari, S.; Schilbach, S.; Kaliyappan, T.; Gouge, J.; Zumer, K.; Schwarz, J.; Urlaub, H.; Dienemann, C.; Vannini, A.; Cramer, P.
Deposited on : 2022-05-20
Resolution : 3.40 Å(reported)

This is a wwPDB EM Validation Summary Report for a publicly released PDB entry.

We welcome your comments at validation@mail.wwpdb.org

A user guide is available at

<https://www.wwpdb.org/validation/2017/EMValidationReportHelp>

with specific help available everywhere you see the ⓘ symbol.

The types of validation reports are described at

<http://www.wwpdb.org/validation/2017/FAQs#types>.

The following versions of software and data (see [references ⓘ](#)) were used in the production of this report:

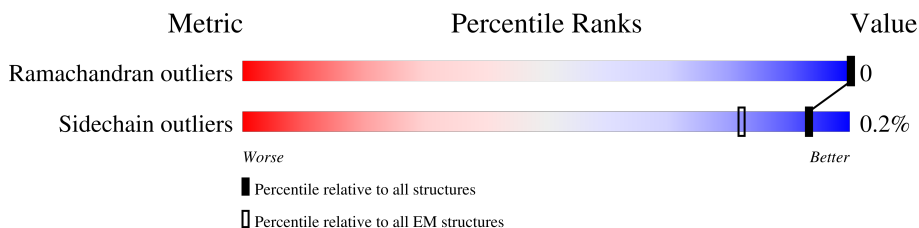
EMDB validation analysis : 0.0.1.dev43
MolProbity : 4.02b-467
Percentile statistics : 20191225.v01 (using entries in the PDB archive December 25th 2019)
MapQ : 1.9.9
Ideal geometry (proteins) : Engh & Huber (2001)
Ideal geometry (DNA, RNA) : Parkinson et al. (1996)
Validation Pipeline (wwPDB-VP) : 2.31.3

1 Overall quality at a glance

The following experimental techniques were used to determine the structure:
ELECTRON MICROSCOPY

The reported resolution of this entry is 3.40 Å.

Percentile scores (ranging between 0-100) for global validation metrics of the entry are shown in the following graphic. The table shows the number of entries on which the scores are based.



| Metric | Whole archive (#Entries) | EM structures (#Entries) |
|-----------------------|--------------------------|--------------------------|
| Ramachandran outliers | 154571 | 4023 |
| Sidechain outliers | 154315 | 3826 |

The table below summarises the geometric issues observed across the polymeric chains and their fit to the map. The red, orange, yellow and green segments of the bar indicate the fraction of residues that contain outliers for ≥ 3 , 2, 1 and 0 types of geometric quality criteria respectively. A grey segment represents the fraction of residues that are not modelled. The numeric value for each fraction is indicated below the corresponding segment, with a dot representing fractions $\leq 5\%$. The upper red bar (where present) indicates the fraction of residues that have poor fit to the EM map (all-atom inclusion $< 40\%$). The numeric value is given above the bar.

| Mol | Chain | Length | Quality of chain |
|-----|-------|--------|------------------|
| 1 | A | 1970 | 72% 28% |
| 2 | B | 1174 | 97% . |
| 3 | C | 275 | 93% 7% |
| 4 | D | 142 | 90% 10% |
| 5 | E | 210 | 99% . |
| 6 | F | 127 | 62% 38% |
| 7 | G | 172 | 99% .. |
| 8 | H | 150 | 99% . |
| 9 | I | 125 | 91% 9% |

Continued on next page...

Continued from previous page...

| Mol | Chain | Length | Quality of chain |
|-----|-------|--------|------------------|
| 10 | J | 67 | 96% |
| 11 | K | 117 | 98% |
| 12 | L | 58 | 76% 24% |
| 13 | M | 316 | 77% 23% |
| 14 | N | 96 | 54% 15% 31% |
| 15 | O | 339 | 53% 47% |
| 16 | Q | 517 | 26% 73% |
| 17 | R | 249 | 89% 11% |
| 18 | T | 96 | 55% 14% 31% |
| 19 | U | 376 | 23% 77% |
| 20 | V | 109 | 89% 11% |
| 21 | a | 368 | 10% 58% 42% |
| 22 | b | 411 | 89% 11% |
| 23 | c | 1469 | 21% 79% |
| 24 | d | 98 | 27% 53% 47% |

2 Entry composition [i](#)

There are 26 unique types of molecules in this entry. The entry contains 49277 atoms, of which 0 are hydrogens and 0 are deuteriums.

In the tables below, the AltConf column contains the number of residues with at least one atom in alternate conformation and the Trace column contains the number of residues modelled with at most 2 atoms.

- Molecule 1 is a protein called DNA-directed RNA polymerase subunit.

| Mol | Chain | Residues | Atoms | | | | | AltConf | Trace |
|-----|-------|----------|-------|------|------|------|----|---------|-------|
| | | | Total | C | N | O | S | | |
| 1 | A | 1423 | 11274 | 7092 | 2016 | 2094 | 72 | 0 | 0 |

- Molecule 2 is a protein called DNA-directed RNA polymerase subunit beta.

| Mol | Chain | Residues | Atoms | | | | | AltConf | Trace |
|-----|-------|----------|-------|------|------|------|----|---------|-------|
| | | | Total | C | N | O | S | | |
| 2 | B | 1136 | 9076 | 5739 | 1597 | 1676 | 64 | 0 | 0 |

- Molecule 3 is a protein called DNA-directed RNA polymerase II subunit RPB3.

| Mol | Chain | Residues | Atoms | | | | | AltConf | Trace |
|-----|-------|----------|-------|------|-----|-----|---|---------|-------|
| | | | Total | C | N | O | S | | |
| 3 | C | 257 | 2059 | 1294 | 351 | 408 | 6 | 0 | 0 |

- Molecule 4 is a protein called RNA polymerase II subunit D.

| Mol | Chain | Residues | Atoms | | | | | AltConf | Trace |
|-----|-------|----------|-------|-----|-----|-----|---|---------|-------|
| | | | Total | C | N | O | S | | |
| 4 | D | 128 | 1050 | 656 | 178 | 212 | 4 | 0 | 0 |

- Molecule 5 is a protein called DNA-directed RNA polymerase II subunit E.

| Mol | Chain | Residues | Atoms | | | | | AltConf | Trace |
|-----|-------|----------|-------|------|-----|-----|---|---------|-------|
| | | | Total | C | N | O | S | | |
| 5 | E | 209 | 1721 | 1089 | 300 | 324 | 8 | 0 | 0 |

- Molecule 6 is a protein called DNA-directed RNA polymerase II subunit F.

| Mol | Chain | Residues | Atoms | | | | | AltConf | Trace |
|-----|-------|----------|-------|-----|-----|-----|---|---------|-------|
| | | | Total | C | N | O | S | | |
| 6 | F | 79 | 636 | 406 | 108 | 117 | 5 | 0 | 0 |

- Molecule 7 is a protein called DNA-directed RNA polymerase II subunit RPB7.

| Mol | Chain | Residues | Atoms | | | | | AltConf | Trace |
|-----|-------|----------|-------|-----|-----|-----|---|---------|-------|
| | | | Total | C | N | O | S | | |
| 7 | G | 171 | 1351 | 875 | 219 | 249 | 8 | 0 | 0 |

- Molecule 8 is a protein called DNA-directed RNA polymerases I, II, and III subunit RPABC3.

| Mol | Chain | Residues | Atoms | | | | | AltConf | Trace |
|-----|-------|----------|-------|-----|-----|-----|---|---------|-------|
| | | | Total | C | N | O | S | | |
| 8 | H | 148 | 1186 | 750 | 194 | 237 | 5 | 0 | 0 |

- Molecule 9 is a protein called DNA-directed RNA polymerase II subunit RPB9.

| Mol | Chain | Residues | Atoms | | | | | AltConf | Trace |
|-----|-------|----------|-------|-----|-----|-----|----|---------|-------|
| | | | Total | C | N | O | S | | |
| 9 | I | 114 | 928 | 571 | 166 | 180 | 11 | 0 | 0 |

- Molecule 10 is a protein called DNA-directed RNA polymerases I, II, and III subunit RPABC5.

| Mol | Chain | Residues | Atoms | | | | | AltConf | Trace |
|-----|-------|----------|-------|-----|----|----|---|---------|-------|
| | | | Total | C | N | O | S | | |
| 10 | J | 64 | 507 | 328 | 86 | 87 | 6 | 0 | 0 |

- Molecule 11 is a protein called RNA polymerase II subunit J.

| Mol | Chain | Residues | Atoms | | | | | AltConf | Trace |
|-----|-------|----------|-------|-----|-----|-----|---|---------|-------|
| | | | Total | C | N | O | S | | |
| 11 | K | 115 | 920 | 593 | 152 | 173 | 2 | 0 | 0 |

- Molecule 12 is a protein called RNA polymerase II subunit K.

| Mol | Chain | Residues | Atoms | | | | | AltConf | Trace |
|-----|-------|----------|-------|-----|----|----|---|---------|-------|
| | | | Total | C | N | O | S | | |
| 12 | L | 44 | 373 | 231 | 72 | 64 | 6 | 0 | 0 |

- Molecule 13 is a protein called Transcription initiation factor IIB.

| Mol | Chain | Residues | Atoms | | | | | AltConf | Trace |
|-----|-------|----------|-------|------|-----|-----|----|---------|-------|
| | | | Total | C | N | O | S | | |
| 13 | M | 242 | 1879 | 1182 | 332 | 349 | 16 | 0 | 0 |

- Molecule 14 is a DNA chain called Non-template strand.

| Mol | Chain | Residues | Atoms | | | | | AltConf | Trace |
|-----|-------|----------|-------|-----|-----|-----|----|---------|-------|
| | | | Total | C | N | O | P | | |
| 14 | N | 66 | 1369 | 648 | 258 | 397 | 66 | 0 | 0 |

- Molecule 15 is a protein called TATA-box-binding protein.

| Mol | Chain | Residues | Atoms | | | | | AltConf | Trace |
|-----|-------|----------|-------|-----|-----|-----|---|---------|-------|
| | | | Total | C | N | O | S | | |
| 15 | O | 179 | 1422 | 923 | 251 | 241 | 7 | 0 | 0 |

- Molecule 16 is a protein called General transcription factor IIF subunit 1.

| Mol | Chain | Residues | Atoms | | | | | AltConf | Trace |
|-----|-------|----------|-------|-----|-----|-----|---|---------|-------|
| | | | Total | C | N | O | S | | |
| 16 | Q | 138 | 1138 | 719 | 208 | 208 | 3 | 0 | 0 |

- Molecule 17 is a protein called General transcription factor IIF subunit 2.

| Mol | Chain | Residues | Atoms | | | | | AltConf | Trace |
|-----|-------|----------|-------|------|-----|-----|---|---------|-------|
| | | | Total | C | N | O | S | | |
| 17 | R | 222 | 1788 | 1127 | 320 | 338 | 3 | 0 | 0 |

- Molecule 18 is a DNA chain called Template strand.

| Mol | Chain | Residues | Atoms | | | | | AltConf | Trace |
|-----|-------|----------|-------|-----|-----|-----|----|---------|-------|
| | | | Total | C | N | O | P | | |
| 18 | T | 66 | 1337 | 637 | 239 | 395 | 66 | 0 | 0 |

- Molecule 19 is a protein called Transcription initiation factor IIA subunit 1.

| Mol | Chain | Residues | Atoms | | | | | AltConf | Trace |
|-----|-------|----------|-------|-----|-----|-----|---|---------|-------|
| | | | Total | C | N | O | S | | |
| 19 | U | 88 | 734 | 470 | 124 | 136 | 4 | 0 | 0 |

- Molecule 20 is a protein called Transcription initiation factor IIA subunit 2.

| Mol | Chain | Residues | Atoms | | | | | AltConf | Trace |
|-----|-------|----------|-------|-----|-----|-----|---|---------|-------|
| | | | Total | C | N | O | S | | |
| 20 | V | 97 | 793 | 502 | 140 | 149 | 2 | 0 | 0 |

- Molecule 21 is a protein called snRNA-activating protein complex subunit 1.

| Mol | Chain | Residues | Atoms | | | | | AltConf | Trace |
|-----|-------|----------|-------|------|-----|-----|----|---------|-------|
| | | | Total | C | N | O | S | | |
| 21 | a | 215 | 1807 | 1165 | 313 | 319 | 10 | 0 | 0 |

- Molecule 22 is a protein called snRNA-activating protein complex subunit 3.

| Mol | Chain | Residues | Atoms | | | | | AltConf | Trace |
|-----|-------|----------|-------|------|-----|-----|----|---------|-------|
| | | | Total | C | N | O | S | | |
| 22 | b | 365 | 2977 | 1890 | 510 | 557 | 20 | 0 | 0 |

- Molecule 23 is a protein called snRNA-activating protein complex subunit 4.

| Mol | Chain | Residues | Atoms | | | | | AltConf | Trace |
|-----|-------|----------|-------|------|-----|-----|----|---------|-------|
| | | | Total | C | N | O | S | | |
| 23 | c | 303 | 2516 | 1574 | 453 | 479 | 10 | 0 | 0 |

- Molecule 24 is a protein called snRNA-activating protein complex subunit 5.

| Mol | Chain | Residues | Atoms | | | | | AltConf | Trace |
|-----|-------|----------|-------|-----|----|----|---|---------|-------|
| | | | Total | C | N | O | S | | |
| 24 | d | 52 | 424 | 259 | 81 | 81 | 3 | 0 | 0 |

- Molecule 25 is ZINC ION (three-letter code: ZN) (formula: Zn) (labeled as "Ligand of Interest" by depositor).

| Mol | Chain | Residues | Atoms | | AltConf |
|-----|-------|----------|-------|----|---------|
| 25 | A | 2 | Total | Zn | 0 |
| | | | 2 | 2 | |
| 25 | B | 1 | Total | Zn | 0 |
| | | | 1 | 1 | |
| 25 | C | 1 | Total | Zn | 0 |
| | | | 1 | 1 | |
| 25 | I | 2 | Total | Zn | 0 |
| | | | 2 | 2 | |
| 25 | J | 1 | Total | Zn | 0 |
| | | | 1 | 1 | |
| 25 | L | 1 | Total | Zn | 0 |
| | | | 1 | 1 | |
| 25 | M | 1 | Total | Zn | 0 |
| | | | 1 | 1 | |
| 25 | b | 2 | Total | Zn | 0 |
| | | | 2 | 2 | |

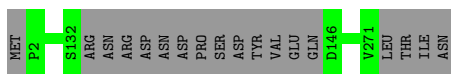
- Molecule 26 is MAGNESIUM ION (three-letter code: MG) (formula: Mg) (labeled as "Lig-

and of Interest" by depositor).

| Mol | Chain | Residues | Atoms | | AltConf |
|-----|-------|----------|-------|----|---------|
| | | | Total | Mg | |
| 26 | A | 1 | 1 | 1 | 0 |

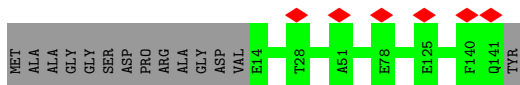
- Molecule 3: DNA-directed RNA polymerase II subunit RPB3

Chain C:  93% 7%



- Molecule 4: RNA polymerase II subunit D

Chain D:  90% 10%



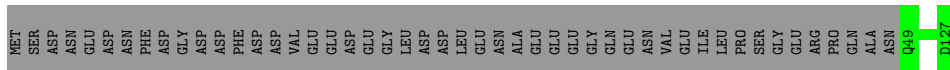
- Molecule 5: DNA-directed RNA polymerase II subunit E

Chain E:  99%



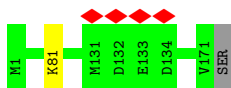
- Molecule 6: DNA-directed RNA polymerase II subunit F

Chain F:  62% 38%



- Molecule 7: DNA-directed RNA polymerase II subunit RPB7

Chain G:  99%




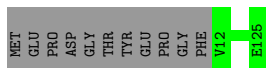
- Molecule 8: DNA-directed RNA polymerases I, II, and III subunit RPABC3

Chain H:  99%

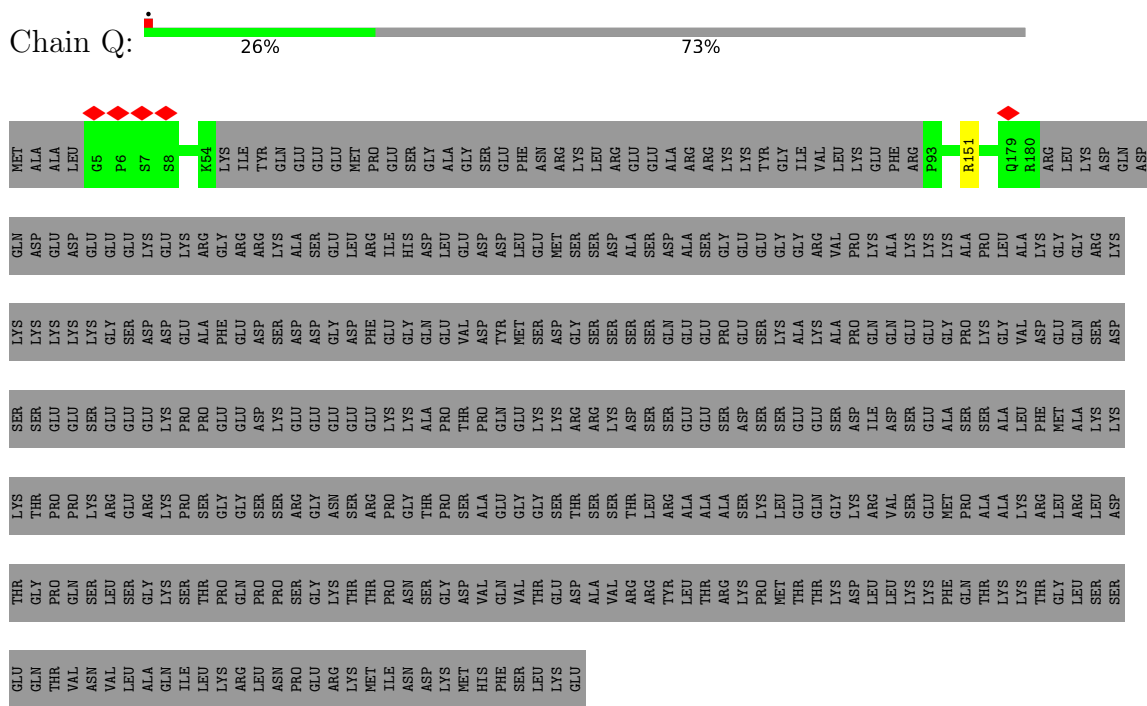


- Molecule 9: DNA-directed RNA polymerase II subunit RPB9

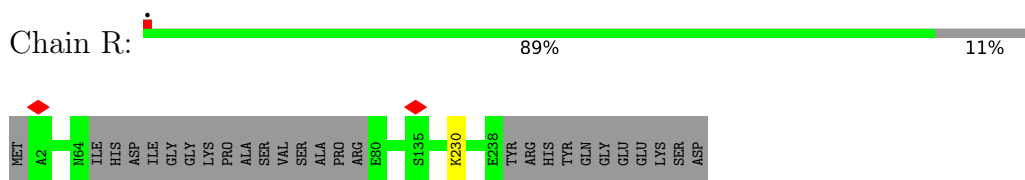
Chain I:  91% 9%



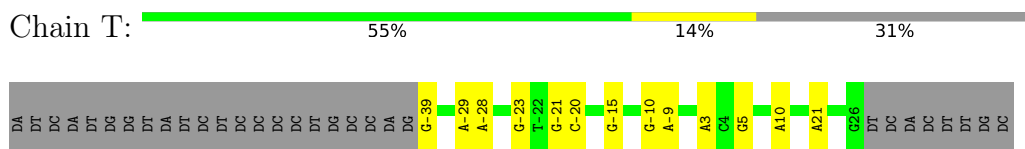
● Molecule 16: General transcription factor IIF subunit 1



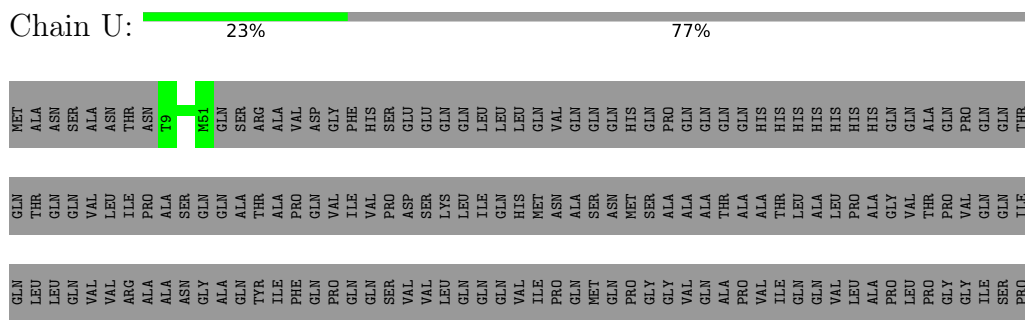
● Molecule 17: General transcription factor IIF subunit 2

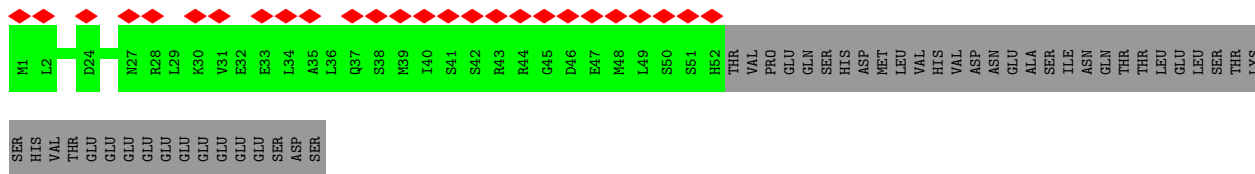


● Molecule 18: Template strand



● Molecule 19: Transcription initiation factor IIA subunit 1





4 Experimental information

| Property | Value | Source |
|--------------------------------------|---------------------------------|-----------|
| EM reconstruction method | SINGLE PARTICLE | Depositor |
| Imposed symmetry | POINT, Not provided | |
| Number of particles used | 47293 | Depositor |
| Resolution determination method | FSC 0.143 CUT-OFF | Depositor |
| CTF correction method | NONE | Depositor |
| Microscope | TFS KRIOS | Depositor |
| Voltage (kV) | 300 | Depositor |
| Electron dose ($e^-/\text{\AA}^2$) | 54.45 | Depositor |
| Minimum defocus (nm) | 300 | Depositor |
| Maximum defocus (nm) | 2500 | Depositor |
| Magnification | Not provided | |
| Image detector | GATAN K3 BIOQUANTUM (6k x 4k) | Depositor |
| Maximum map value | 0.193 | Depositor |
| Minimum map value | -0.055 | Depositor |
| Average map value | -0.000 | Depositor |
| Map value standard deviation | 0.006 | Depositor |
| Recommended contour level | 0.0183 | Depositor |
| Map size (\AA) | 419.99997, 419.99997, 419.99997 | wwPDB |
| Map dimensions | 400, 400, 400 | wwPDB |
| Map angles ($^\circ$) | 90.0, 90.0, 90.0 | wwPDB |
| Pixel spacing (\AA) | 1.05, 1.05, 1.05 | Depositor |

5 Model quality [i](#)

5.1 Standard geometry [i](#)

Bond lengths and bond angles in the following residue types are not validated in this section: MG, ZN

The Z score for a bond length (or angle) is the number of standard deviations the observed value is removed from the expected value. A bond length (or angle) with $|Z| > 5$ is considered an outlier worth inspection. RMSZ is the root-mean-square of all Z scores of the bond lengths (or angles).

| Mol | Chain | Bond lengths | | Bond angles | |
|-----|-------|--------------|-----------------|-------------|---------|
| | | RMSZ | # Z >5 | RMSZ | # Z >5 |
| 1 | A | 0.25 | 0/11479 | 0.41 | 0/15496 |
| 2 | B | 0.28 | 0/9257 | 0.42 | 0/12493 |
| 3 | C | 0.27 | 0/2102 | 0.43 | 0/2857 |
| 4 | D | 0.24 | 0/1064 | 0.35 | 0/1428 |
| 5 | E | 0.25 | 0/1752 | 0.40 | 0/2366 |
| 6 | F | 0.27 | 0/646 | 0.40 | 0/871 |
| 7 | G | 0.25 | 0/1382 | 0.40 | 0/1874 |
| 8 | H | 0.28 | 0/1207 | 0.46 | 0/1628 |
| 9 | I | 0.25 | 0/949 | 0.44 | 0/1284 |
| 10 | J | 0.29 | 0/516 | 0.42 | 0/696 |
| 11 | K | 0.27 | 0/939 | 0.42 | 0/1271 |
| 12 | L | 0.31 | 0/378 | 0.40 | 0/500 |
| 13 | M | 0.25 | 0/1909 | 0.42 | 0/2580 |
| 14 | N | 0.94 | 14/1538 (0.9%) | 0.88 | 0/2376 |
| 15 | O | 0.25 | 0/1448 | 0.43 | 0/1948 |
| 16 | Q | 0.24 | 0/1167 | 0.39 | 0/1576 |
| 17 | R | 0.29 | 0/1817 | 0.45 | 0/2445 |
| 18 | T | 1.03 | 13/1496 (0.9%) | 0.88 | 0/2302 |
| 19 | U | 0.24 | 0/747 | 0.43 | 0/1005 |
| 20 | V | 0.25 | 0/803 | 0.45 | 0/1088 |
| 21 | a | 0.24 | 0/1851 | 0.39 | 0/2493 |
| 22 | b | 0.24 | 0/3053 | 0.43 | 0/4131 |
| 23 | c | 0.24 | 0/2562 | 0.40 | 0/3440 |
| 24 | d | 0.24 | 0/425 | 0.46 | 0/564 |
| All | All | 0.35 | 27/50487 (0.1%) | 0.46 | 0/68712 |

The worst 5 of 27 bond length outliers are listed below:

| Mol | Chain | Res | Type | Atoms | Z | Observed(Å) | Ideal(Å) |
|-----|-------|-----|------|--------|-------|-------------|----------|
| 14 | N | -7 | DG | C1'-N9 | -7.92 | 1.36 | 1.47 |
| 14 | N | -9 | DG | C1'-N9 | -7.87 | 1.36 | 1.47 |

Continued on next page...

Continued from previous page...

| Mol | Chain | Res | Type | Atoms | Z | Observed(Å) | Ideal(Å) |
|-----|-------|-----|------|--------|-------|-------------|----------|
| 14 | N | 24 | DA | C1'-N9 | -7.56 | 1.36 | 1.47 |
| 18 | T | -28 | DA | C1'-N9 | -7.54 | 1.36 | 1.47 |
| 18 | T | -9 | DA | C1'-N9 | -7.51 | 1.36 | 1.47 |

There are no bond angle outliers.

There are no chirality outliers.

There are no planarity outliers.

5.2 Too-close contacts [i](#)

Due to software issues we are unable to calculate clashes - this section is therefore empty.

5.3 Torsion angles [i](#)

5.3.1 Protein backbone [i](#)

In the following table, the Percentiles column shows the percent Ramachandran outliers of the chain as a percentile score with respect to all PDB entries followed by that with respect to all EM entries.

The Analysed column shows the number of residues for which the backbone conformation was analysed, and the total number of residues.

| Mol | Chain | Analysed | Favoured | Allowed | Outliers | Percentiles | |
|-----|-------|-----------------|------------|---------|----------|-------------|-----|
| 1 | A | 1413/1970 (72%) | 1377 (98%) | 36 (2%) | 0 | 100 | 100 |
| 2 | B | 1130/1174 (96%) | 1098 (97%) | 32 (3%) | 0 | 100 | 100 |
| 3 | C | 253/275 (92%) | 247 (98%) | 6 (2%) | 0 | 100 | 100 |
| 4 | D | 126/142 (89%) | 124 (98%) | 2 (2%) | 0 | 100 | 100 |
| 5 | E | 207/210 (99%) | 203 (98%) | 4 (2%) | 0 | 100 | 100 |
| 6 | F | 77/127 (61%) | 74 (96%) | 3 (4%) | 0 | 100 | 100 |
| 7 | G | 169/172 (98%) | 165 (98%) | 4 (2%) | 0 | 100 | 100 |
| 8 | H | 146/150 (97%) | 143 (98%) | 3 (2%) | 0 | 100 | 100 |
| 9 | I | 112/125 (90%) | 106 (95%) | 6 (5%) | 0 | 100 | 100 |
| 10 | J | 62/67 (92%) | 62 (100%) | 0 | 0 | 100 | 100 |
| 11 | K | 113/117 (97%) | 112 (99%) | 1 (1%) | 0 | 100 | 100 |
| 12 | L | 42/58 (72%) | 41 (98%) | 1 (2%) | 0 | 100 | 100 |

Continued on next page...

Continued from previous page...

| Mol | Chain | Analysed | Favoured | Allowed | Outliers | Percentiles | |
|-----|-------|-----------------|------------|----------|----------|-------------|-----|
| 13 | M | 238/316 (75%) | 231 (97%) | 7 (3%) | 0 | 100 | 100 |
| 15 | O | 177/339 (52%) | 174 (98%) | 3 (2%) | 0 | 100 | 100 |
| 16 | Q | 134/517 (26%) | 129 (96%) | 5 (4%) | 0 | 100 | 100 |
| 17 | R | 218/249 (88%) | 211 (97%) | 7 (3%) | 0 | 100 | 100 |
| 19 | U | 84/376 (22%) | 79 (94%) | 5 (6%) | 0 | 100 | 100 |
| 20 | V | 95/109 (87%) | 87 (92%) | 8 (8%) | 0 | 100 | 100 |
| 21 | a | 211/368 (57%) | 207 (98%) | 4 (2%) | 0 | 100 | 100 |
| 22 | b | 359/411 (87%) | 336 (94%) | 23 (6%) | 0 | 100 | 100 |
| 23 | c | 299/1469 (20%) | 288 (96%) | 11 (4%) | 0 | 100 | 100 |
| 24 | d | 50/98 (51%) | 50 (100%) | 0 | 0 | 100 | 100 |
| All | All | 5715/8839 (65%) | 5544 (97%) | 171 (3%) | 0 | 100 | 100 |

There are no Ramachandran outliers to report.

5.3.2 Protein sidechains [i](#)

In the following table, the Percentiles column shows the percent sidechain outliers of the chain as a percentile score with respect to all PDB entries followed by that with respect to all EM entries.

The Analysed column shows the number of residues for which the sidechain conformation was analysed, and the total number of residues.

| Mol | Chain | Analysed | Rotameric | Outliers | Percentiles | |
|-----|-------|-----------------|-------------|----------|-------------|-----|
| 1 | A | 1254/1749 (72%) | 1253 (100%) | 1 (0%) | 93 | 98 |
| 2 | B | 994/1027 (97%) | 991 (100%) | 3 (0%) | 92 | 97 |
| 3 | C | 234/252 (93%) | 234 (100%) | 0 | 100 | 100 |
| 4 | D | 118/126 (94%) | 118 (100%) | 0 | 100 | 100 |
| 5 | E | 191/192 (100%) | 189 (99%) | 2 (1%) | 76 | 88 |
| 6 | F | 69/111 (62%) | 69 (100%) | 0 | 100 | 100 |
| 7 | G | 152/153 (99%) | 151 (99%) | 1 (1%) | 84 | 92 |
| 8 | H | 129/131 (98%) | 129 (100%) | 0 | 100 | 100 |
| 9 | I | 103/112 (92%) | 103 (100%) | 0 | 100 | 100 |
| 10 | J | 53/56 (95%) | 53 (100%) | 0 | 100 | 100 |
| 11 | K | 104/106 (98%) | 104 (100%) | 0 | 100 | 100 |

Continued on next page...

Continued from previous page...

| Mol | Chain | Analysed | Rotameric | Outliers | Percentiles | |
|-----|-------|-----------------|-------------|----------|-------------|-----|
| 12 | L | 41/55 (74%) | 41 (100%) | 0 | 100 | 100 |
| 13 | M | 206/268 (77%) | 206 (100%) | 0 | 100 | 100 |
| 15 | O | 154/293 (53%) | 154 (100%) | 0 | 100 | 100 |
| 16 | Q | 121/448 (27%) | 120 (99%) | 1 (1%) | 81 | 91 |
| 17 | R | 196/218 (90%) | 195 (100%) | 1 (0%) | 88 | 94 |
| 19 | U | 82/324 (25%) | 82 (100%) | 0 | 100 | 100 |
| 20 | V | 89/98 (91%) | 89 (100%) | 0 | 100 | 100 |
| 21 | a | 198/334 (59%) | 197 (100%) | 1 (0%) | 88 | 94 |
| 22 | b | 323/356 (91%) | 323 (100%) | 0 | 100 | 100 |
| 23 | c | 270/1213 (22%) | 270 (100%) | 0 | 100 | 100 |
| 24 | d | 48/93 (52%) | 48 (100%) | 0 | 100 | 100 |
| All | All | 5129/7715 (66%) | 5119 (100%) | 10 (0%) | 93 | 98 |

5 of 10 residues with a non-rotameric sidechain are listed below:

| Mol | Chain | Res | Type |
|-----|-------|------|------|
| 16 | Q | 151 | ARG |
| 17 | R | 230 | LYS |
| 21 | a | 200 | LYS |
| 2 | B | 1131 | ARG |
| 5 | E | 52 | ARG |

Sometimes sidechains can be flipped to improve hydrogen bonding and reduce clashes. There are no such sidechains identified.

5.3.3 RNA [i](#)

There are no RNA molecules in this entry.

5.4 Non-standard residues in protein, DNA, RNA chains [i](#)

There are no non-standard protein/DNA/RNA residues in this entry.

5.5 Carbohydrates [i](#)

There are no monosaccharides in this entry.

5.6 Ligand geometry

Of 12 ligands modelled in this entry, 12 are monoatomic - leaving 0 for Mogul analysis.

There are no bond length outliers.

There are no bond angle outliers.

There are no chirality outliers.

There are no torsion outliers.

There are no ring outliers.

No monomer is involved in short contacts.

5.7 Other polymers

There are no such residues in this entry.

5.8 Polymer linkage issues

There are no chain breaks in this entry.

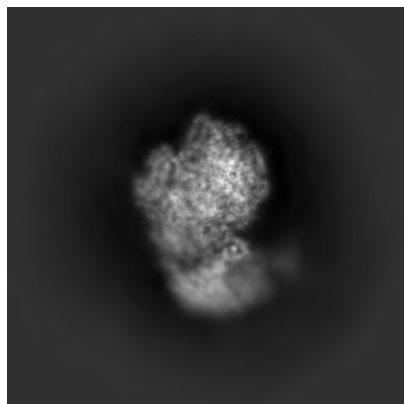
6 Map visualisation [i](#)

This section contains visualisations of the EMDB entry EMD-15006. These allow visual inspection of the internal detail of the map and identification of artifacts.

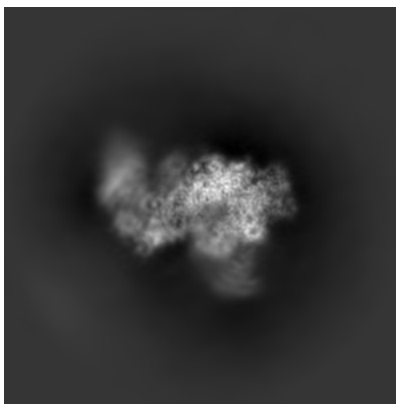
Images derived from a raw map, generated by summing the deposited half-maps, are presented below the corresponding image components of the primary map to allow further visual inspection and comparison with those of the primary map.

6.1 Orthogonal projections [i](#)

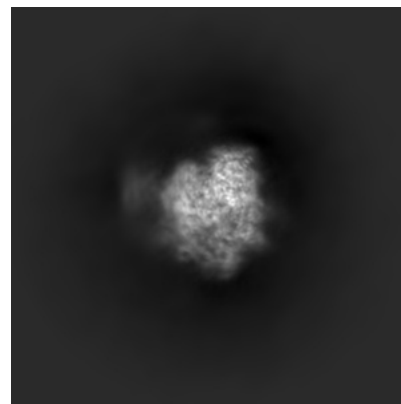
6.1.1 Primary map



X

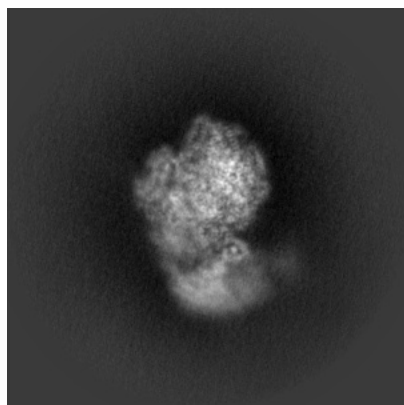


Y

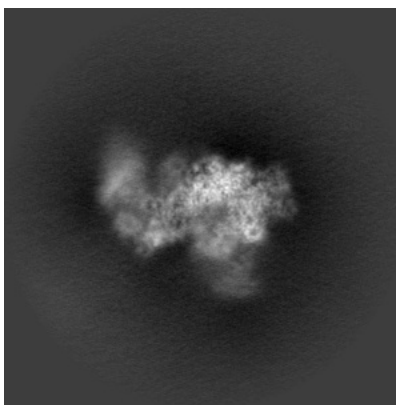


Z

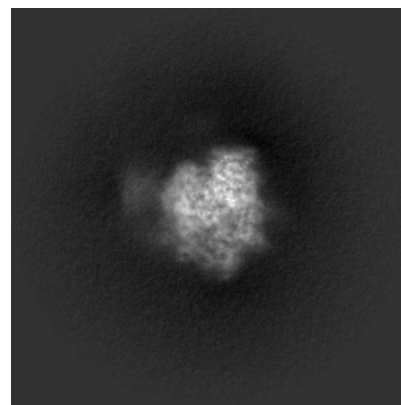
6.1.2 Raw map



X



Y

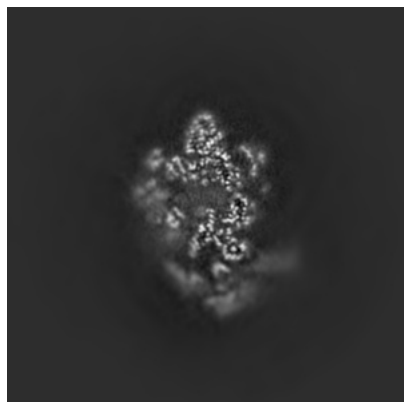


Z

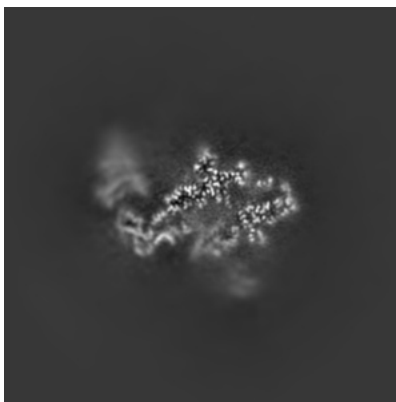
The images above show the map projected in three orthogonal directions.

6.2 Central slices [i](#)

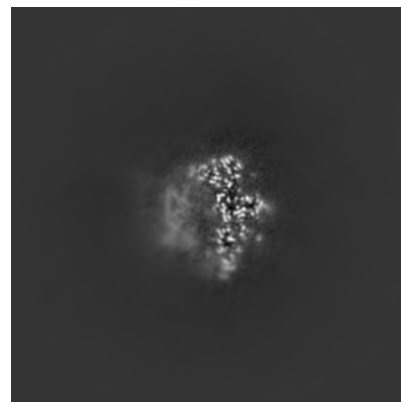
6.2.1 Primary map



X Index: 200

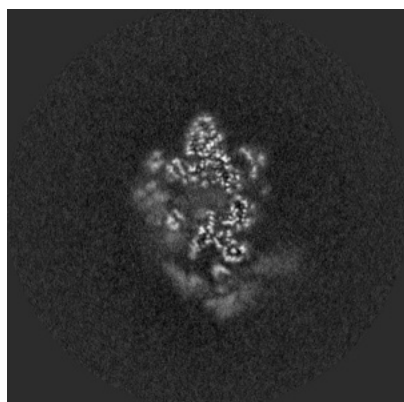


Y Index: 200

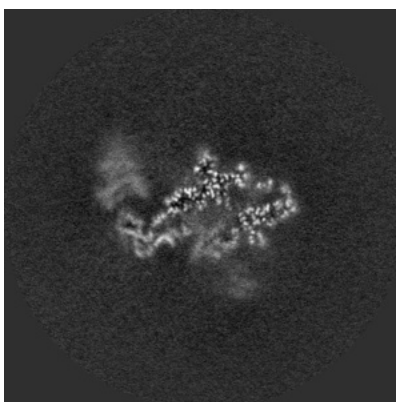


Z Index: 200

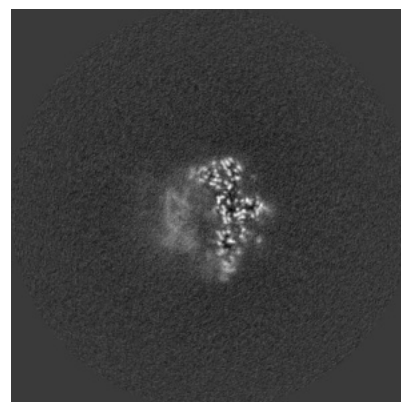
6.2.2 Raw map



X Index: 200



Y Index: 200

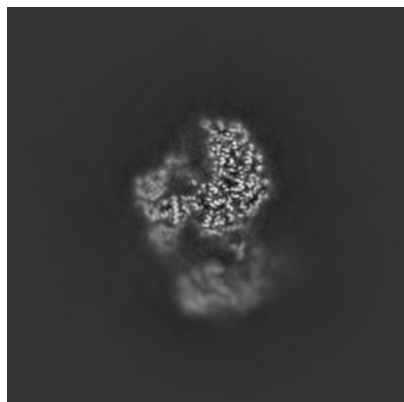


Z Index: 200

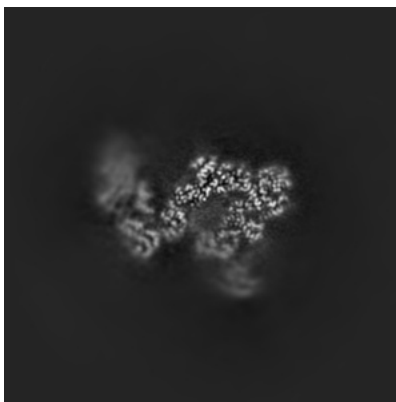
The images above show central slices of the map in three orthogonal directions.

6.3 Largest variance slices [i](#)

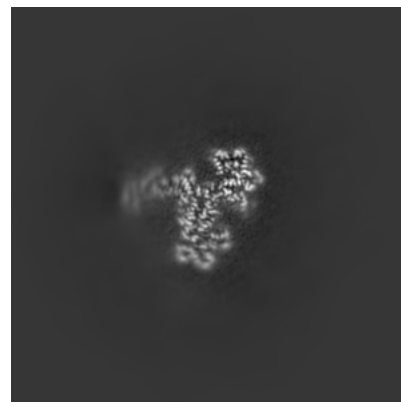
6.3.1 Primary map



X Index: 218



Y Index: 208

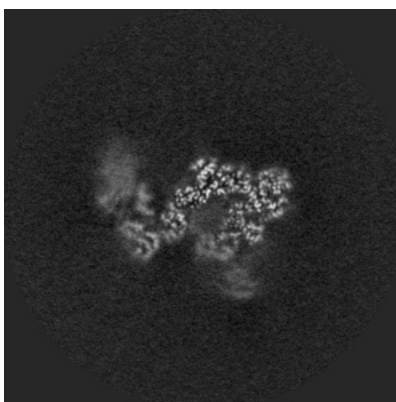


Z Index: 243

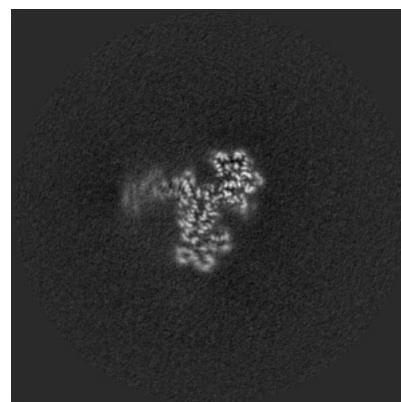
6.3.2 Raw map



X Index: 218



Y Index: 208

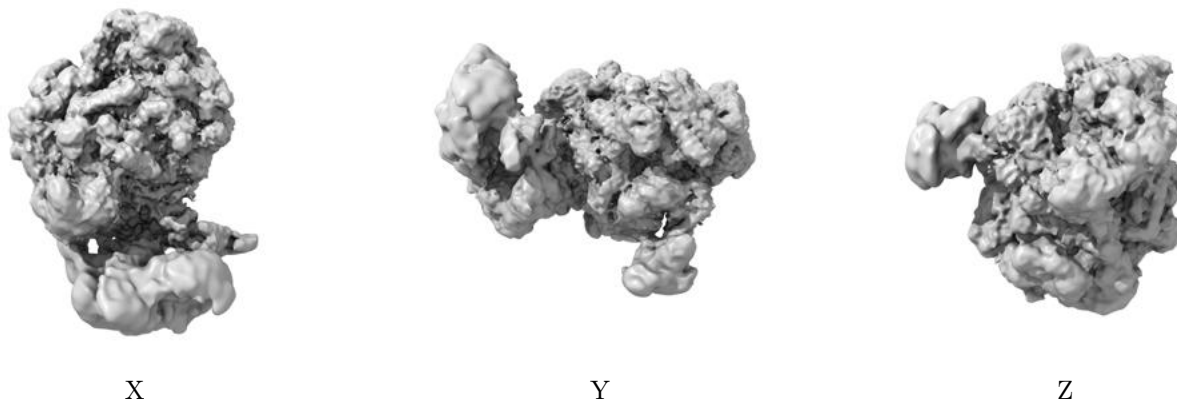


Z Index: 243

The images above show the largest variance slices of the map in three orthogonal directions.

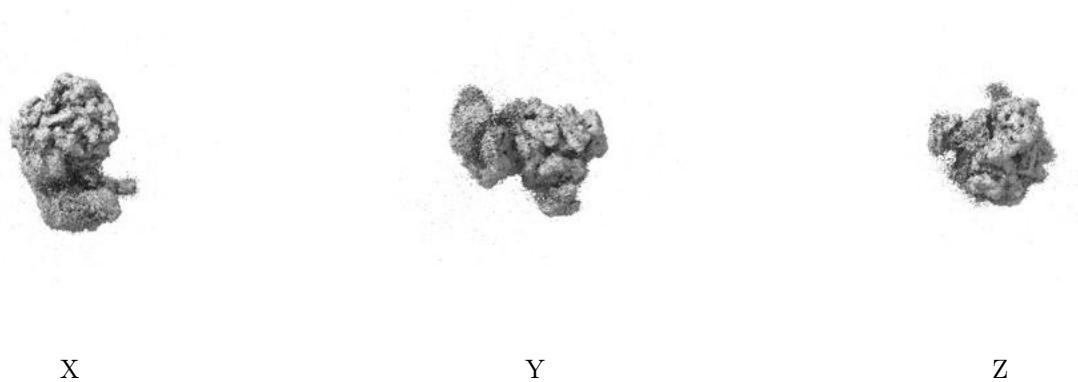
6.4 Orthogonal surface views [i](#)

6.4.1 Primary map



The images above show the 3D surface view of the map at the recommended contour level 0.0183. These images, in conjunction with the slice images, may facilitate assessment of whether an appropriate contour level has been provided.

6.4.2 Raw map



These images show the 3D surface of the raw map. The raw map's contour level was selected so that its surface encloses the same volume as the primary map does at its recommended contour level.

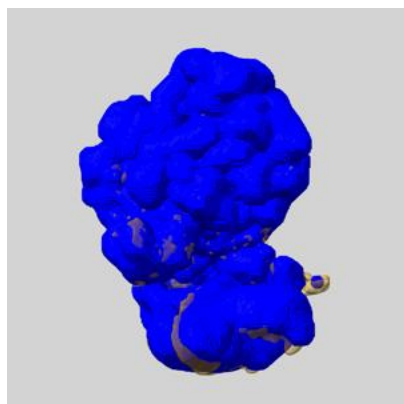
6.5 Mask visualisation [i](#)

This section shows the 3D surface view of the primary map at 50% transparency overlaid with the specified mask at 0% transparency

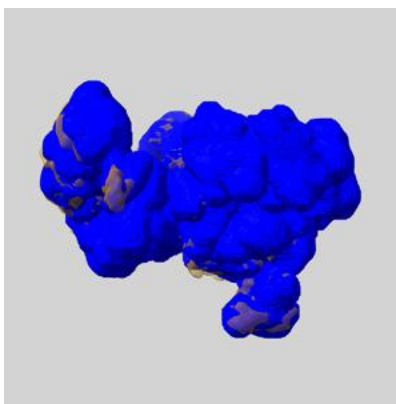
A mask typically either:

- Encompasses the whole structure
- Separates out a domain, a functional unit, a monomer or an area of interest from a larger structure

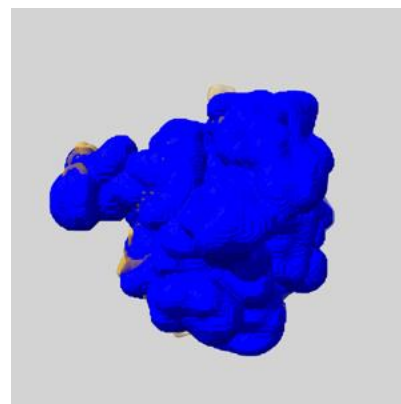
6.5.1 emd_15006_msk_1.map [i](#)



X



Y

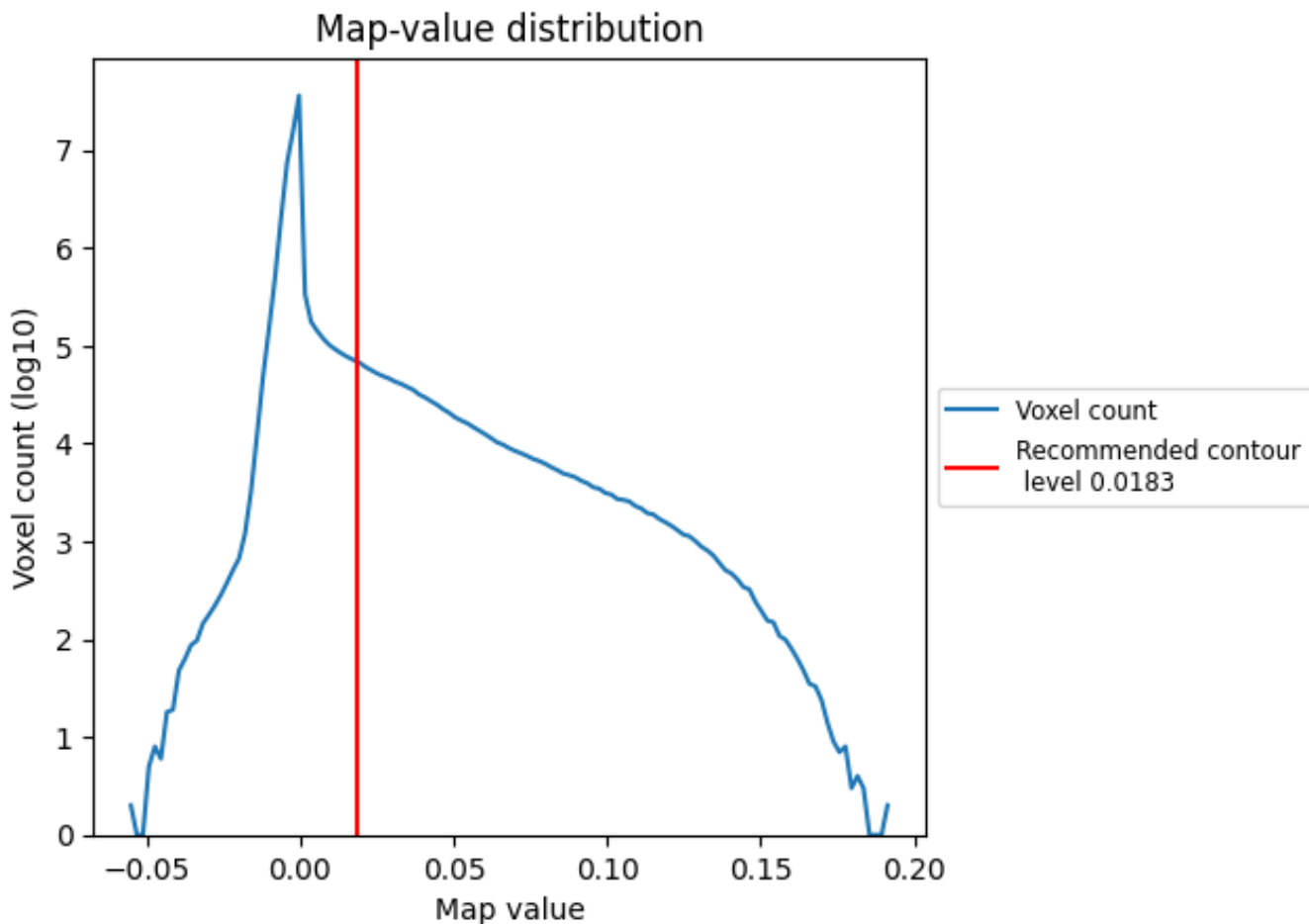


Z

7 Map analysis [i](#)

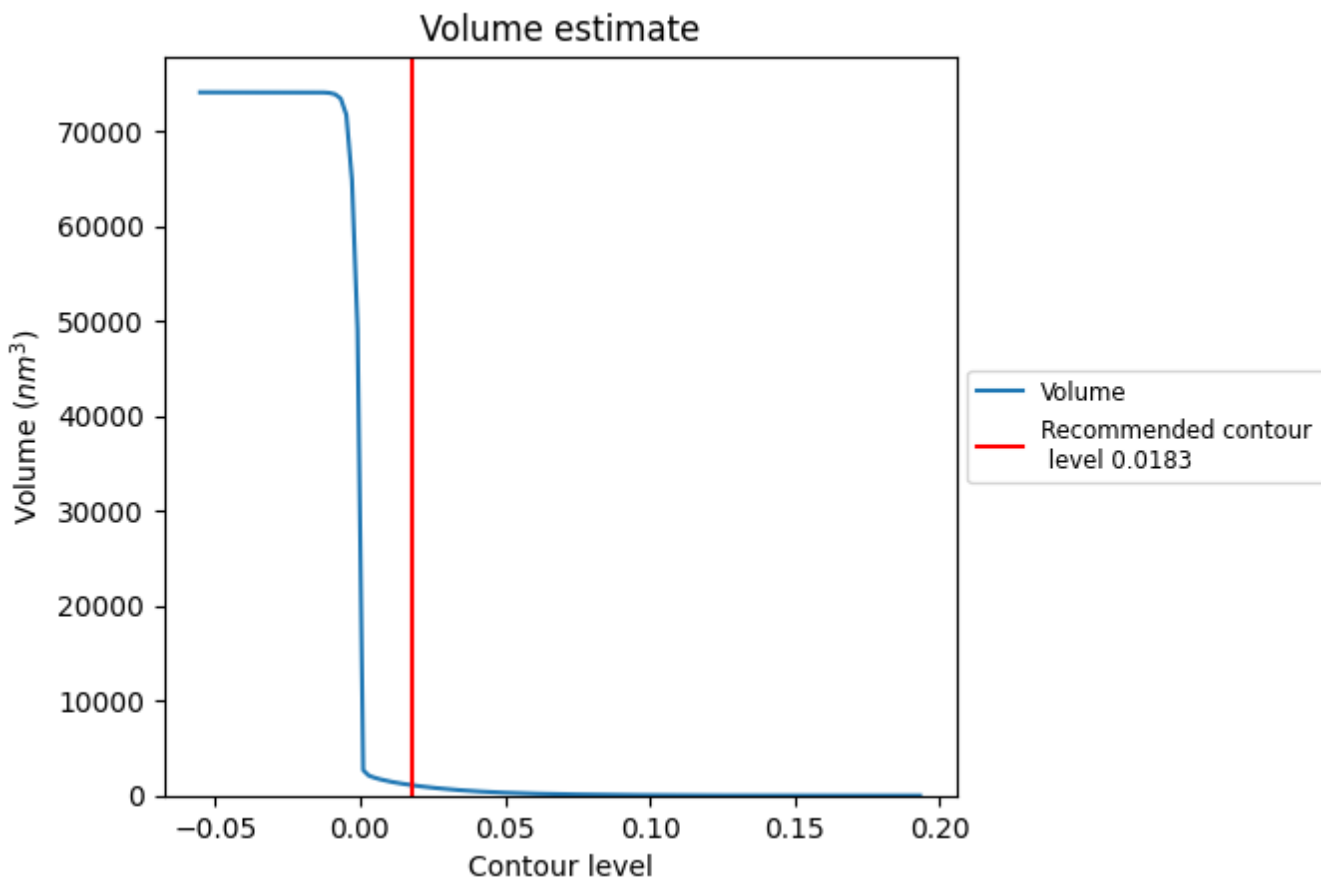
This section contains the results of statistical analysis of the map.

7.1 Map-value distribution [i](#)



The map-value distribution is plotted in 128 intervals along the x-axis. The y-axis is logarithmic. A spike in this graph at zero usually indicates that the volume has been masked.

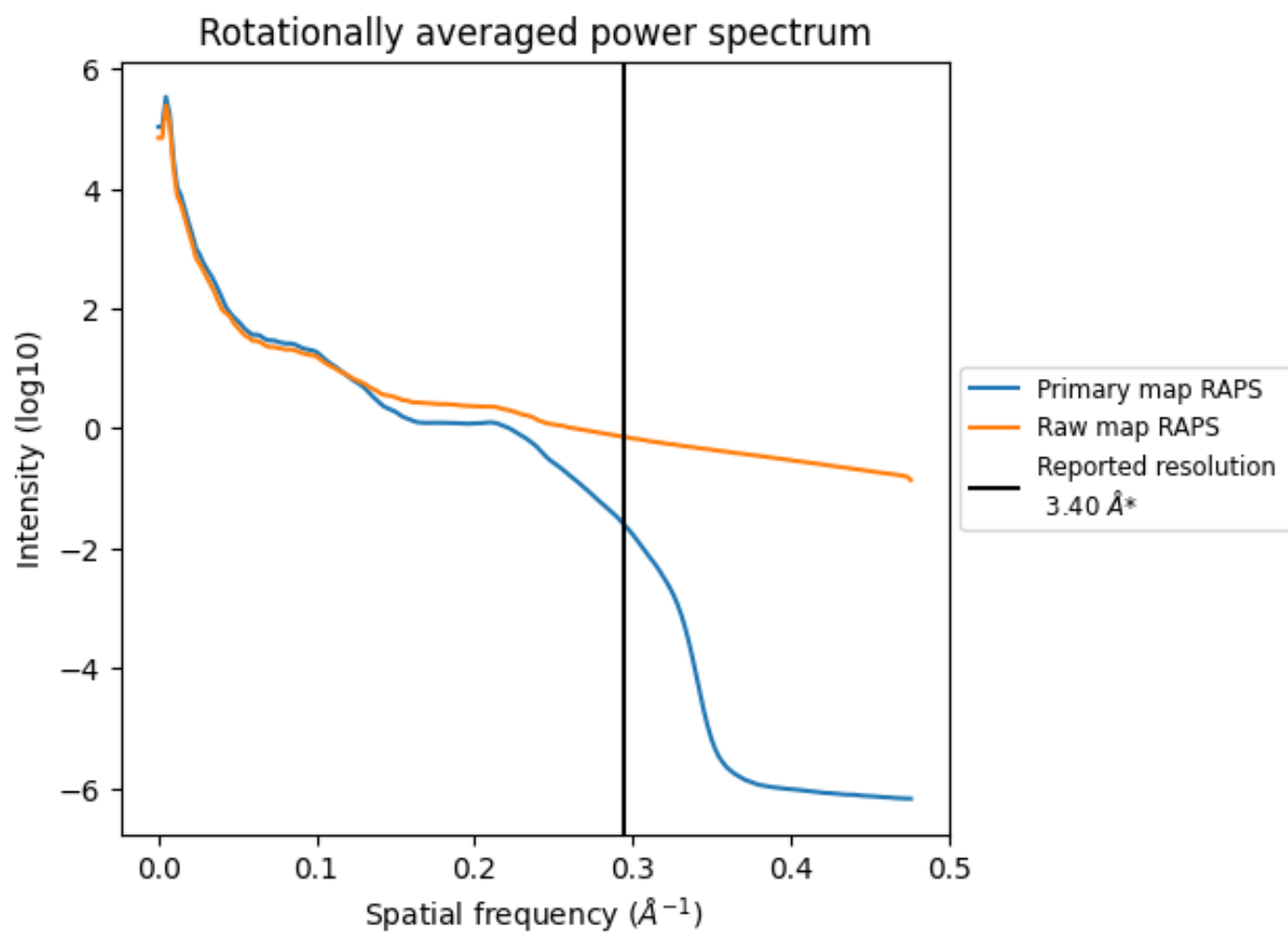
7.2 Volume estimate [i](#)



The volume at the recommended contour level is 1079 nm^3 ; this corresponds to an approximate mass of 975 kDa.

The volume estimate graph shows how the enclosed volume varies with the contour level. The recommended contour level is shown as a vertical line and the intersection between the line and the curve gives the volume of the enclosed surface at the given level.

7.3 Rotationally averaged power spectrum [i](#)

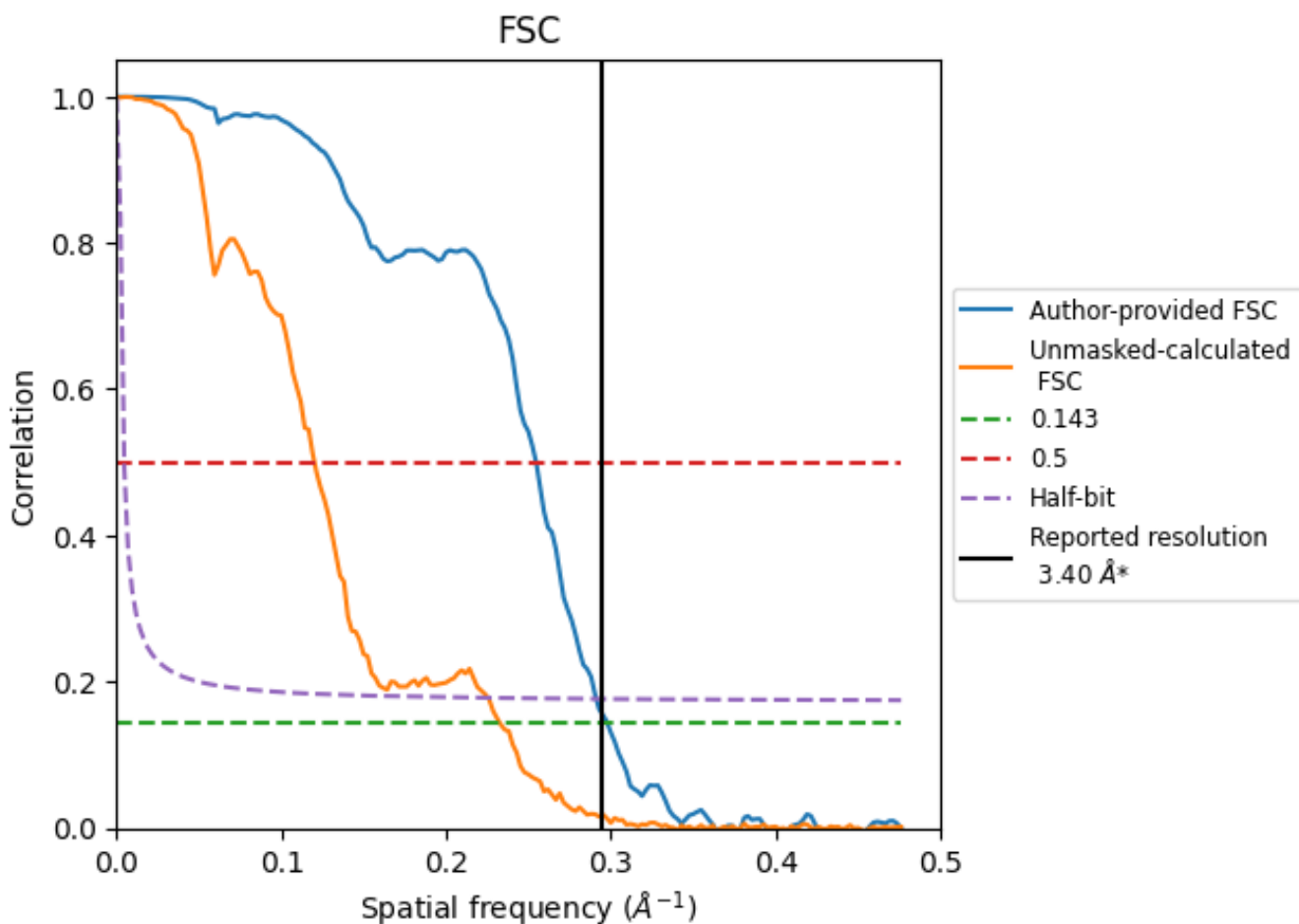


*Reported resolution corresponds to spatial frequency of 0.294 Å⁻¹

8 Fourier-Shell correlation [i](#)

Fourier-Shell Correlation (FSC) is the most commonly used method to estimate the resolution of single-particle and subtomogram-averaged maps. The shape of the curve depends on the imposed symmetry, mask and whether or not the two 3D reconstructions used were processed from a common reference. The reported resolution is shown as a black line. A curve is displayed for the half-bit criterion in addition to lines showing the 0.143 gold standard cut-off and 0.5 cut-off.

8.1 FSC [i](#)



*Reported resolution corresponds to spatial frequency of 0.294 \AA^{-1}

8.2 Resolution estimates [i](#)

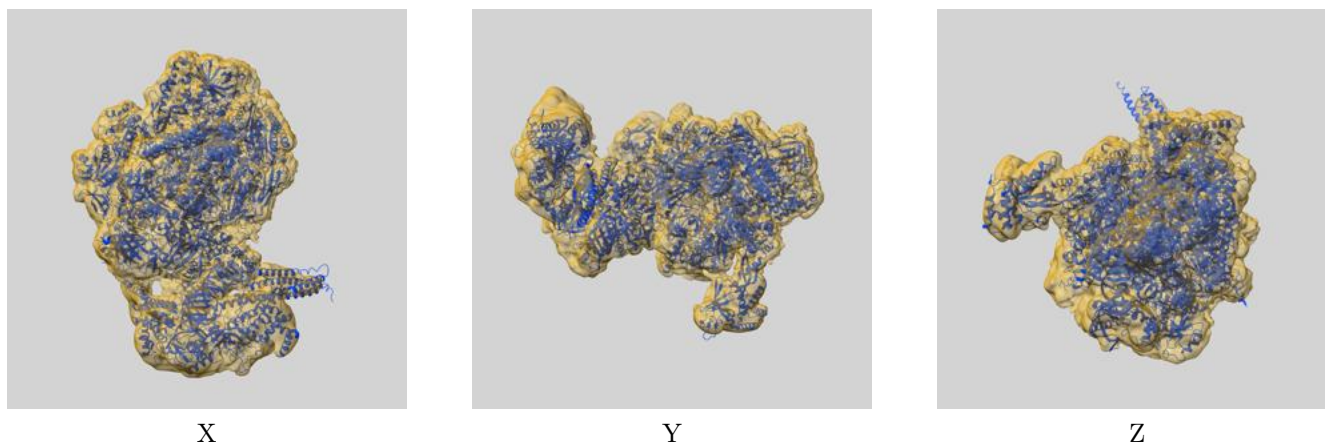
| Resolution estimate (Å) | Estimation criterion (FSC cut-off) | | |
|---------------------------|------------------------------------|------|----------|
| | 0.143 | 0.5 | Half-bit |
| Reported by author | 3.40 | - | - |
| Author-provided FSC curve | 3.36 | 3.93 | 3.43 |
| Unmasked-calculated* | 4.30 | 8.32 | 4.43 |

*Resolution estimate based on FSC curve calculated by comparison of deposited half-maps. The value from deposited half-maps intersecting FSC 0.143 CUT-OFF 4.30 differs from the reported value 3.4 by more than 10 %

9 Map-model fit [i](#)

This section contains information regarding the fit between EMDB map EMD-15006 and PDB model 7ZX7. Per-residue inclusion information can be found in section 3 on page 9.

9.1 Map-model overlay [i](#)



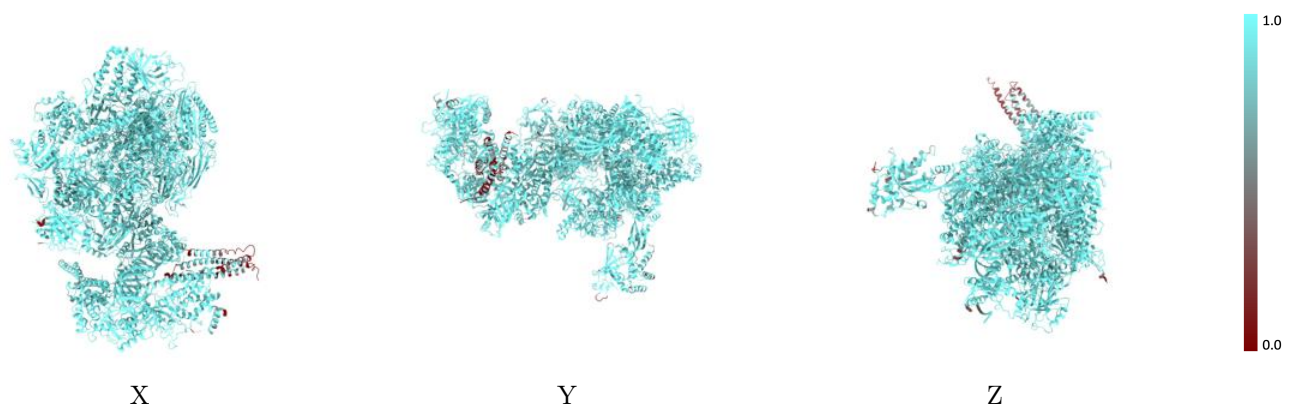
The images above show the 3D surface view of the map at the recommended contour level 0.0183 at 50% transparency in yellow overlaid with a ribbon representation of the model coloured in blue. These images allow for the visual assessment of the quality of fit between the atomic model and the map.

9.2 Q-score mapped to coordinate model [\(i\)](#)



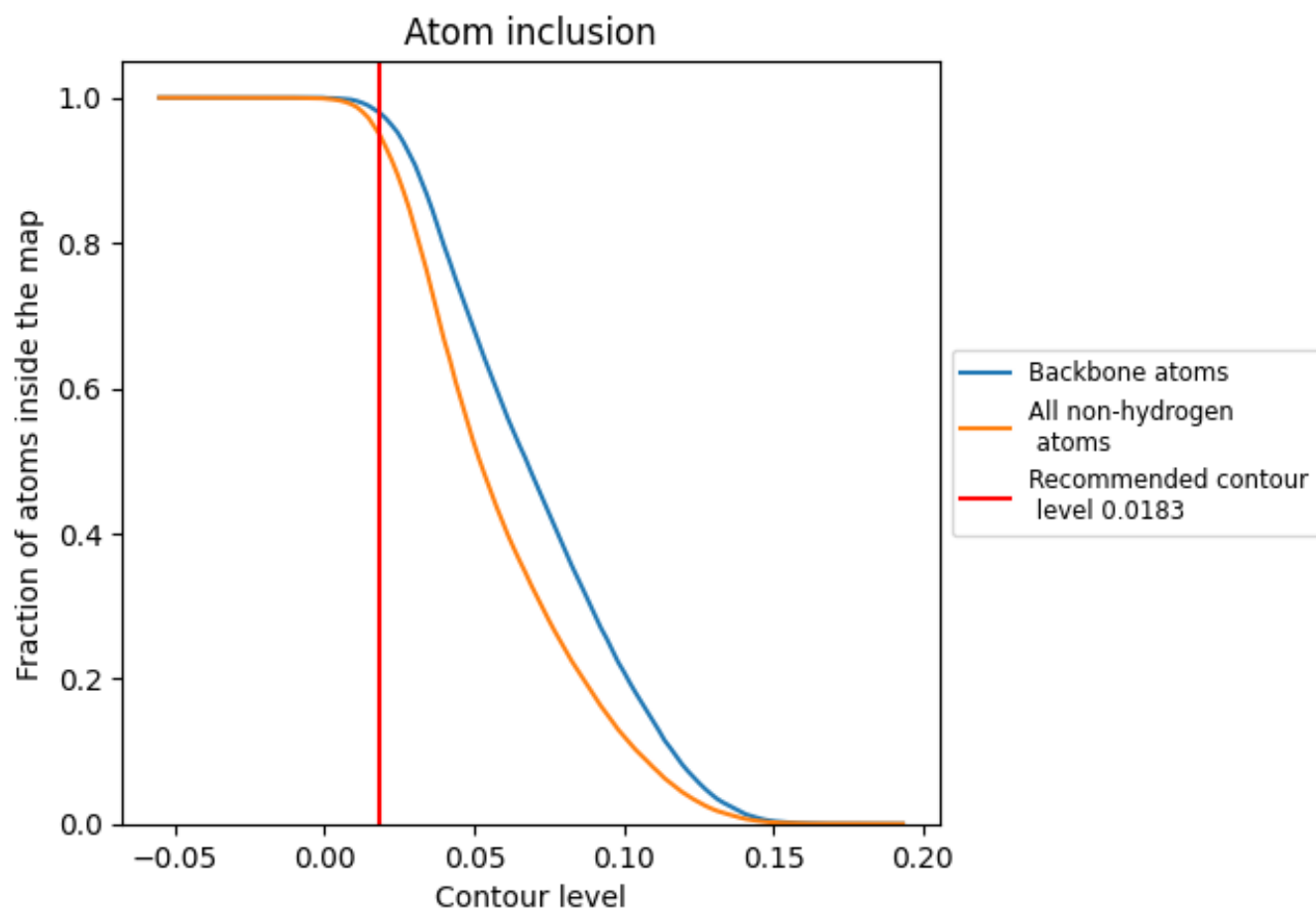
The images above show the model with each residue coloured according to its Q-score. This shows their resolvability in the map with higher Q-score values reflecting better resolvability. Please note: Q-score is calculating the resolvability of atoms, and thus high values are only expected at resolutions at which atoms can be resolved. Low Q-score values may therefore be expected for many entries.

9.3 Atom inclusion mapped to coordinate model [\(i\)](#)



The images above show the model with each residue coloured according to its atom inclusion. This shows to what extent they are inside the map at the recommended contour level (0.0183).

























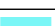



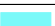





















9.4 Atom inclusion [i](#)



At the recommended contour level, 98% of all backbone atoms, 95% of all non-hydrogen atoms, are inside the map.

9.5 Map-model fit summary

The table lists the average atom inclusion at the recommended contour level (0.0183) and Q-score for the entire model and for each chain.

| Chain | Atom inclusion | Q-score |
|-------|--|--|
| All |  0.9500 |  0.2670 |
| A |  0.9771 |  0.3270 |
| B |  0.9610 |  0.3300 |
| C |  0.9807 |  0.3970 |
| D |  0.8763 |  0.1340 |
| E |  0.9810 |  0.2990 |
| F |  0.9757 |  0.3720 |
| G |  0.9227 |  0.1600 |
| H |  0.9879 |  0.3930 |
| I |  0.9780 |  0.2570 |
| J |  0.9556 |  0.3670 |
| K |  0.9803 |  0.4280 |
| L |  0.9664 |  0.2890 |
| M |  0.9652 |  0.3220 |
| N |  0.9737 |  0.2010 |
| O |  0.9769 |  0.2550 |
| Q |  0.9315 |  0.1400 |
| R |  0.9441 |  0.1430 |
| T |  0.9723 |  0.1930 |
| U |  0.9583 |  0.1760 |
| V |  0.9703 |  0.1960 |
| a |  0.7914 |  0.1270 |
| b |  0.9577 |  0.1220 |
| c |  0.8779 |  0.1260 |
| d |  0.4587 |  0.1120 |

