



Full wwPDB X-ray Structure Validation Report ⓘ

Sep 15, 2020 – 06:38 PM BST

PDB ID : 6ZY0
Title : Catabolic reductive dehalogenase NpRdhA, N-terminally tagged, K488Q variant
Authors : Leys, D.; Halliwell, T.
Deposited on : 2020-07-30
Resolution : 2.13 Å(reported)

This is a Full wwPDB X-ray Structure Validation Report for a publicly released PDB entry.

We welcome your comments at validation@mail.wwpdb.org

A user guide is available at

<https://www.wwpdb.org/validation/2017/XrayValidationReportHelp>

with specific help available everywhere you see the ⓘ symbol.

The following versions of software and data (see [references ⓘ](#)) were used in the production of this report:

MolProbity : 4.02b-467
Mogul : 1.8.5 (274361), CSD as541be (2020)
Xtriage (Phenix) : 1.13
EDS : 2.14.4
buster-report : 1.1.7 (2018)
Percentile statistics : 20191225.v01 (using entries in the PDB archive December 25th 2019)
Refmac : 5.8.0158
CCP4 : 7.0.044 (Gargrove)
Ideal geometry (proteins) : Engh & Huber (2001)
Ideal geometry (DNA, RNA) : Parkinson et al. (1996)
Validation Pipeline (wwPDB-VP) : 2.14.4

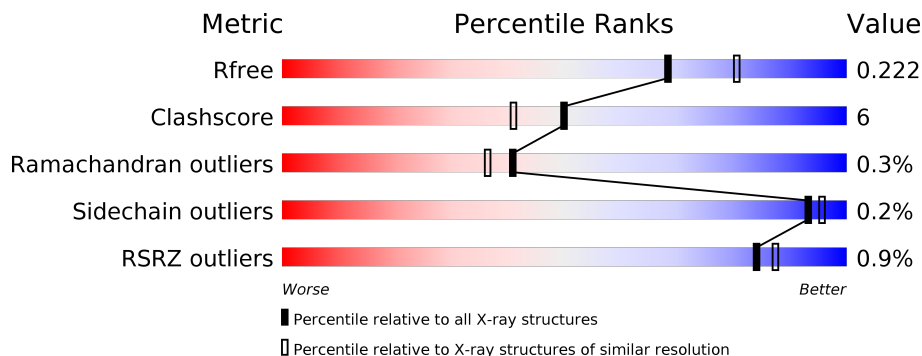
1 Overall quality at a glance

The following experimental techniques were used to determine the structure:

X-RAY DIFFRACTION

The reported resolution of this entry is 2.13 Å.

Percentile scores (ranging between 0-100) for global validation metrics of the entry are shown in the following graphic. The table shows the number of entries on which the scores are based.



Metric	Whole archive (#Entries)	Similar resolution (#Entries, resolution range(Å))
R_{free}	130704	2523 (2.16-2.12)
Clashscore	141614	2653 (2.16-2.12)
Ramachandran outliers	138981	2618 (2.16-2.12)
Sidechain outliers	138945	2617 (2.16-2.12)
RSRZ outliers	127900	2485 (2.16-2.12)

The table below summarises the geometric issues observed across the polymeric chains and their fit to the electron density. The red, orange, yellow and green segments on the lower bar indicate the fraction of residues that contain outliers for ≥ 3 , 2, 1 and 0 types of geometric quality criteria respectively. A grey segment represents the fraction of residues that are not modelled. The numeric value for each fraction is indicated below the corresponding segment, with a dot representing fractions $\leq 5\%$. The upper red bar (where present) indicates the fraction of residues that have poor fit to the electron density. The numeric value is given above the bar.

Mol	Chain	Length	Quality of chain
1	A	725	 87% 10% •
1	B	725	 84% 12% • •
1	C	725	 2% 83% 13% •

The following table lists non-polymeric compounds, carbohydrate monomers and non-standard residues in protein, DNA, RNA chains that are outliers for geometric or electron-density-fit criteria:

Mol	Type	Chain	Res	Chirality	Geometry	Clashes	Electron density
3	B12	A	703	X	-	-	-
3	B12	B	703	X	-	-	-
3	B12	C	703	X	-	-	-

2 Entry composition i

There are 6 unique types of molecules in this entry. The entry contains 16514 atoms, of which 0 are hydrogens and 0 are deuteriums.

In the tables below, the ZeroOcc column contains the number of atoms modelled with zero occupancy, the AltConf column contains the number of residues with at least one atom in alternate conformation and the Trace column contains the number of residues modelled with at most 2 atoms.

- Molecule 1 is a protein called Oxidoreductase, NAD-binding/iron-sulfur cluster-binding protein.

Mol	Chain	Residues	Atoms					ZeroOcc	AltConf	Trace
			Total	C	N	O	S			
1	A	701	Total 5353	C 3335	N 975	O 1003	S 40	0	0	0
1	B	695	Total 5294	C 3296	N 966	O 992	S 40	0	1	0
1	C	696	Total 5210	C 3249	N 949	O 972	S 40	0	0	0

There are 84 discrepancies between the modelled and reference sequences:

Chain	Residue	Modelled	Actual	Comment	Reference
A	-26	MET	-	initiating methionine	UNP K2MB66
A	-25	VAL	-	expression tag	UNP K2MB66
A	-24	GLN	-	expression tag	UNP K2MB66
A	-23	THR	-	expression tag	UNP K2MB66
A	-22	SER	-	expression tag	UNP K2MB66
A	-21	PHE	-	expression tag	UNP K2MB66
A	-20	GLU	-	expression tag	UNP K2MB66
A	-19	HIS	-	expression tag	UNP K2MB66
A	-18	HIS	-	expression tag	UNP K2MB66
A	-17	HIS	-	expression tag	UNP K2MB66
A	-16	HIS	-	expression tag	UNP K2MB66
A	-15	HIS	-	expression tag	UNP K2MB66
A	-14	HIS	-	expression tag	UNP K2MB66
A	-13	SER	-	expression tag	UNP K2MB66
A	-12	ALA	-	expression tag	UNP K2MB66
A	-11	GLY	-	expression tag	UNP K2MB66
A	-10	GLU	-	expression tag	UNP K2MB66
A	-9	ASN	-	expression tag	UNP K2MB66
A	-8	LEU	-	expression tag	UNP K2MB66
A	-7	TYR	-	expression tag	UNP K2MB66
A	-6	PHE	-	expression tag	UNP K2MB66
A	-5	GLN	-	expression tag	UNP K2MB66

Continued on next page...

Continued from previous page...

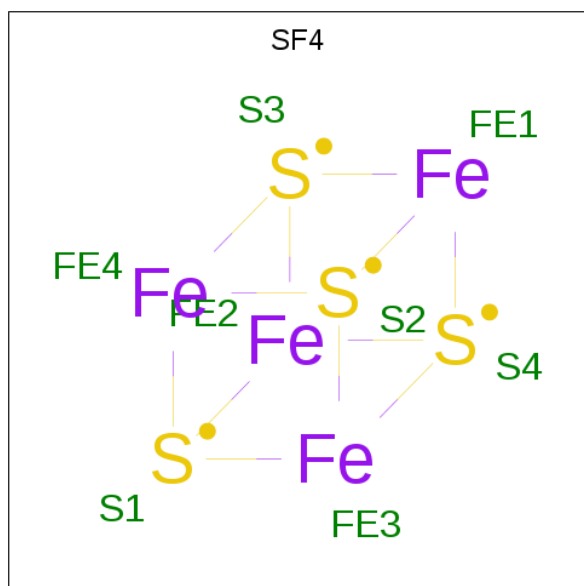
Chain	Residue	Modelled	Actual	Comment	Reference
A	-4	GLY	-	expression tag	UNP K2MB66
A	-3	ALA	-	expression tag	UNP K2MB66
A	-2	GLN	-	expression tag	UNP K2MB66
A	-1	ILE	-	expression tag	UNP K2MB66
A	0	SER	-	expression tag	UNP K2MB66
A	488	GLN	LYS	engineered mutation	UNP K2MB66
B	-26	MET	-	initiating methionine	UNP K2MB66
B	-25	VAL	-	expression tag	UNP K2MB66
B	-24	GLN	-	expression tag	UNP K2MB66
B	-23	THR	-	expression tag	UNP K2MB66
B	-22	SER	-	expression tag	UNP K2MB66
B	-21	PHE	-	expression tag	UNP K2MB66
B	-20	GLU	-	expression tag	UNP K2MB66
B	-19	HIS	-	expression tag	UNP K2MB66
B	-18	HIS	-	expression tag	UNP K2MB66
B	-17	HIS	-	expression tag	UNP K2MB66
B	-16	HIS	-	expression tag	UNP K2MB66
B	-15	HIS	-	expression tag	UNP K2MB66
B	-14	HIS	-	expression tag	UNP K2MB66
B	-13	SER	-	expression tag	UNP K2MB66
B	-12	ALA	-	expression tag	UNP K2MB66
B	-11	GLY	-	expression tag	UNP K2MB66
B	-10	GLU	-	expression tag	UNP K2MB66
B	-9	ASN	-	expression tag	UNP K2MB66
B	-8	LEU	-	expression tag	UNP K2MB66
B	-7	TYR	-	expression tag	UNP K2MB66
B	-6	PHE	-	expression tag	UNP K2MB66
B	-5	GLN	-	expression tag	UNP K2MB66
B	-4	GLY	-	expression tag	UNP K2MB66
B	-3	ALA	-	expression tag	UNP K2MB66
B	-2	GLN	-	expression tag	UNP K2MB66
B	-1	ILE	-	expression tag	UNP K2MB66
B	0	SER	-	expression tag	UNP K2MB66
B	488	GLN	LYS	engineered mutation	UNP K2MB66
C	-26	MET	-	initiating methionine	UNP K2MB66
C	-25	VAL	-	expression tag	UNP K2MB66
C	-24	GLN	-	expression tag	UNP K2MB66
C	-23	THR	-	expression tag	UNP K2MB66
C	-22	SER	-	expression tag	UNP K2MB66
C	-21	PHE	-	expression tag	UNP K2MB66
C	-20	GLU	-	expression tag	UNP K2MB66
C	-19	HIS	-	expression tag	UNP K2MB66

Continued on next page...

Continued from previous page...

Chain	Residue	Modelled	Actual	Comment	Reference
C	-18	HIS	-	expression tag	UNP K2MB66
C	-17	HIS	-	expression tag	UNP K2MB66
C	-16	HIS	-	expression tag	UNP K2MB66
C	-15	HIS	-	expression tag	UNP K2MB66
C	-14	HIS	-	expression tag	UNP K2MB66
C	-13	SER	-	expression tag	UNP K2MB66
C	-12	ALA	-	expression tag	UNP K2MB66
C	-11	GLY	-	expression tag	UNP K2MB66
C	-10	GLU	-	expression tag	UNP K2MB66
C	-9	ASN	-	expression tag	UNP K2MB66
C	-8	LEU	-	expression tag	UNP K2MB66
C	-7	TYR	-	expression tag	UNP K2MB66
C	-6	PHE	-	expression tag	UNP K2MB66
C	-5	GLN	-	expression tag	UNP K2MB66
C	-4	GLY	-	expression tag	UNP K2MB66
C	-3	ALA	-	expression tag	UNP K2MB66
C	-2	GLN	-	expression tag	UNP K2MB66
C	-1	ILE	-	expression tag	UNP K2MB66
C	0	SER	-	expression tag	UNP K2MB66
C	488	GLN	LYS	engineered mutation	UNP K2MB66

- Molecule 2 is IRON/SULFUR CLUSTER (three-letter code: SF4) (formula: Fe₄S₄).



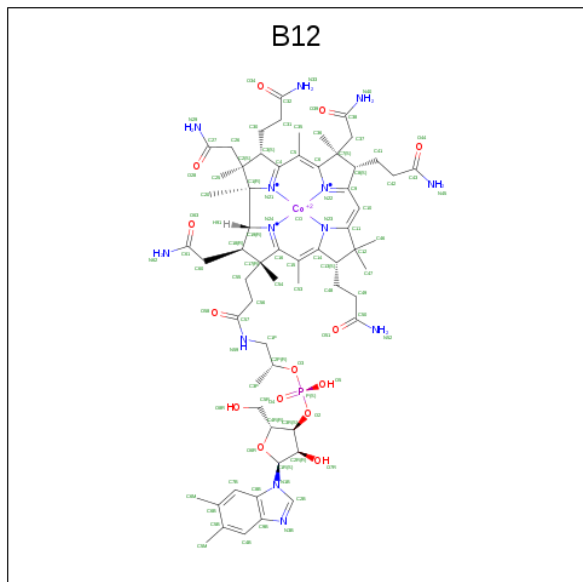
Mol	Chain	Residues	Atoms			ZeroOcc	AltConf
2	A	1	Total	Fe	S	0	0
			8	4	4		

Continued on next page...

Continued from previous page...

Mol	Chain	Residues	Atoms			ZeroOcc	AltConf
2	A	1	Total	Fe	S	0	0
			8	4	4		
2	B	1	Total	Fe	S	0	0
			8	4	4		
2	B	1	Total	Fe	S	0	0
			8	4	4		
2	C	1	Total	Fe	S	0	0
			8	4	4		
2	C	1	Total	Fe	S	0	0
			8	4	4		

- Molecule 3 is COBALAMIN (three-letter code: B12) (formula: $C_{62}H_{89}CoN_{13}O_{14}P$) (labeled as "Ligand of Interest" by author).



Mol	Chain	Residues	Atoms					ZeroOcc	AltConf	
3	A	1	Total	C	Co	N	O	P	0	0
			91	62	1	13	14	1		
3	B	1	Total	C	Co	N	O	P	0	0
			91	62	1	13	14	1		
3	C	1	Total	C	Co	N	O	P	0	0
			91	62	1	13	14	1		

- Molecule 4 is SODIUM ION (three-letter code: NA) (formula: Na).

Mol	Chain	Residues	Atoms		ZeroOcc	AltConf
4	B	1	Total	Na	0	0
			1	1		

Continued on next page...

Continued from previous page...

Mol	Chain	Residues	Atoms	ZeroOcc	AltConf
4	A	1	Total Na 1 1	0	0
4	C	1	Total Na 1 1	0	0

- Molecule 5 is CHLORIDE ION (three-letter code: CL) (formula: Cl).

Mol	Chain	Residues	Atoms	ZeroOcc	AltConf
5	B	1	Total Cl 1 1	0	0
5	C	1	Total Cl 1 1	0	0

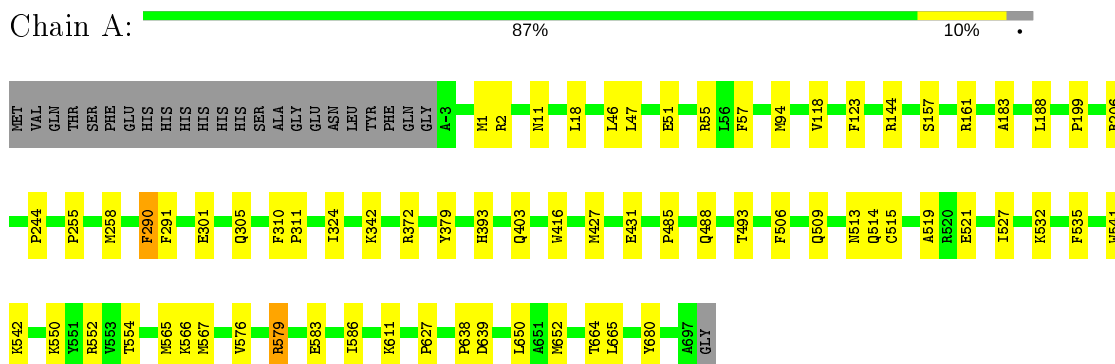
- Molecule 6 is water.

Mol	Chain	Residues	Atoms	ZeroOcc	AltConf
6	A	142	Total O 142 142	0	0
6	B	130	Total O 130 130	0	0
6	C	59	Total O 59 59	0	0

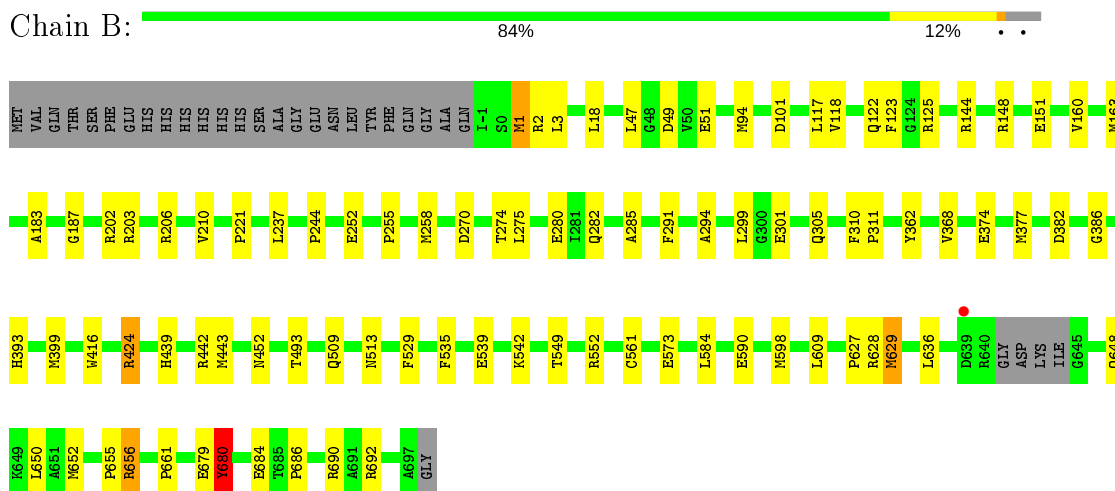
3 Residue-property plots [i](#)

These plots are drawn for all protein, RNA, DNA and oligosaccharide chains in the entry. The first graphic for a chain summarises the proportions of the various outlier classes displayed in the second graphic. The second graphic shows the sequence view annotated by issues in geometry and electron density. Residues are color-coded according to the number of geometric quality criteria for which they contain at least one outlier: green = 0, yellow = 1, orange = 2 and red = 3 or more. A red dot above a residue indicates a poor fit to the electron density ($RSRZ > 2$). Stretches of 2 or more consecutive residues without any outlier are shown as a green connector. Residues present in the sample, but not in the model, are shown in grey.

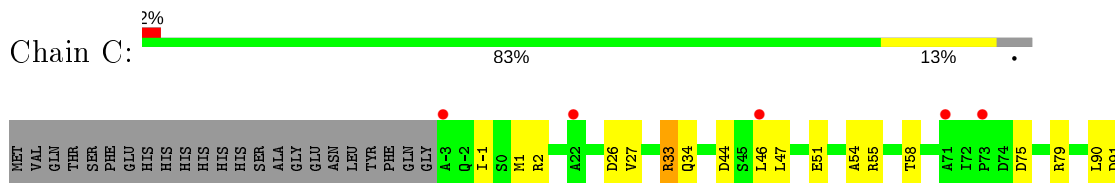
- Molecule 1: Oxidoreductase, NAD-binding/iron-sulfur cluster-binding protein

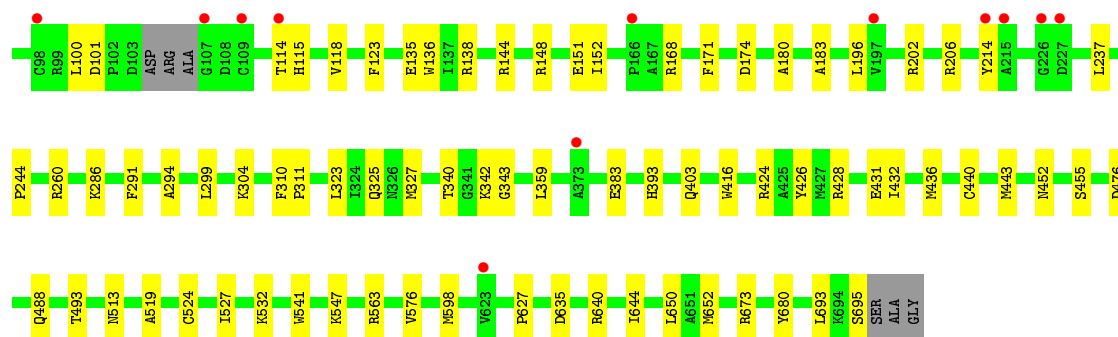


- Molecule 1: Oxidoreductase, NAD-binding/iron-sulfur cluster-binding protein



- Molecule 1: Oxidoreductase, NAD-binding/iron-sulfur cluster-binding protein





4 Data and refinement statistics

Property	Value	Source
Space group	C 1 2 1	Depositor
Cell constants a, b, c, α , β , γ	176.35Å 169.57Å 107.80Å 90.00° 98.33° 90.00°	Depositor
Resolution (Å)	106.66 – 2.13 106.66 – 2.11	Depositor EDS
% Data completeness (in resolution range)	94.5 (106.66-2.13) 47.0 (106.66-2.11)	Depositor EDS
R_{merge}	(Not available)	Depositor
R_{sym}	(Not available)	Depositor
$\langle I/\sigma(I) \rangle$ ¹	1.61 (at 2.10Å)	Xtrriage
Refinement program	PHENIX 1.18.2_3874	Depositor
R, R_{free}	0.185 , 0.222 0.186 , 0.222	Depositor DCC
R_{free} test set	4269 reflections (5.08%)	wwPDB-VP
Wilson B-factor (Å ²)	34.2	Xtrriage
Anisotropy	0.067	Xtrriage
Bulk solvent k_{sol} (e/Å ³), B_{sol} (Å ²)	0.32 , 27.4	EDS
L-test for twinning ²	$\langle L \rangle = 0.50$, $\langle L^2 \rangle = 0.33$	Xtrriage
Estimated twinning fraction	No twinning to report.	Xtrriage
F_o, F_c correlation	0.94	EDS
Total number of atoms	16514	wwPDB-VP
Average B, all atoms (Å ²)	37.0	wwPDB-VP

Xtrriage's analysis on translational NCS is as follows: *The largest off-origin peak in the Patterson function is 3.14% of the height of the origin peak. No significant pseudotranslation is detected.*

¹ Intensities estimated from amplitudes.

² Theoretical values of $\langle |L| \rangle$, $\langle L^2 \rangle$ for acentric reflections are 0.5, 0.333 respectively for untwinned datasets, and 0.375, 0.2 for perfectly twinned datasets.

5 Model quality [i](#)

5.1 Standard geometry [i](#)

Bond lengths and bond angles in the following residue types are not validated in this section: NA, SF4, B12, CL

The Z score for a bond length (or angle) is the number of standard deviations the observed value is removed from the expected value. A bond length (or angle) with $|Z| > 5$ is considered an outlier worth inspection. RMSZ is the root-mean-square of all Z scores of the bond lengths (or angles).

Mol	Chain	Bond lengths		Bond angles	
		RMSZ	# Z >5	RMSZ	# Z >5
1	A	0.33	0/5465	0.62	6/7398 (0.1%)
1	B	0.34	0/5405	0.63	11/7321 (0.2%)
1	C	0.31	0/5318	0.59	4/7212 (0.1%)
All	All	0.33	0/16188	0.61	21/21931 (0.1%)

Chiral center outliers are detected by calculating the chiral volume of a chiral center and verifying if the center is modelled as a planar moiety or with the opposite hand. A planarity outlier is detected by checking planarity of atoms in a peptide group, atoms in a mainchain group or atoms of a sidechain that are expected to be planar.

Mol	Chain	#Chirality outliers	#Planarity outliers
1	A	0	1
1	B	0	1
All	All	0	2

There are no bond length outliers.

All (21) bond angle outliers are listed below:

Mol	Chain	Res	Type	Atoms	Z	Observed(°)	Ideal(°)
1	A	372	ARG	NE-CZ-NH1	-14.43	113.08	120.30
1	A	372	ARG	NE-CZ-NH2	12.16	126.38	120.30
1	B	629	MET	CG-SD-CE	-10.71	83.07	100.20
1	B	680	TYR	CB-CG-CD2	-9.55	115.27	121.00
1	A	290	PHE	CB-CG-CD2	-8.75	114.68	120.80
1	B	3	LEU	CB-CG-CD2	-8.34	96.82	111.00
1	B	202	ARG	NE-CZ-NH2	-7.83	116.38	120.30
1	C	33	ARG	CG-CD-NE	7.83	128.25	111.80
1	B	202	ARG	NE-CZ-NH1	7.41	124.01	120.30
1	B	629	MET	CA-CB-CG	-6.78	101.77	113.30
1	B	202	ARG	CD-NE-CZ	6.54	132.75	123.60

Continued on next page...

Continued from previous page...

Mol	Chain	Res	Type	Atoms	Z	Observed(°)	Ideal(°)
1	C	138	ARG	CA-CB-CG	6.49	127.67	113.40
1	C	202	ARG	NE-CZ-NH1	-6.10	117.25	120.30
1	B	636	LEU	CB-CG-CD2	-6.05	100.72	111.00
1	C	202	ARG	NE-CZ-NH2	5.84	123.22	120.30
1	A	579	ARG	NE-CZ-NH2	5.76	123.18	120.30
1	A	579	ARG	NE-CZ-NH1	-5.66	117.47	120.30
1	A	372	ARG	CA-CB-CG	5.50	125.49	113.40
1	B	424	ARG	CG-CD-NE	5.18	122.67	111.80
1	B	656	ARG	NE-CZ-NH2	-5.18	117.71	120.30
1	B	1	MET	CB-CG-SD	-5.00	97.39	112.40

There are no chirality outliers.

All (2) planarity outliers are listed below:

Mol	Chain	Res	Type	Group
1	A	290	PHE	Sidechain
1	B	680	TYR	Sidechain

5.2 Too-close contacts

In the following table, the Non-H and H(model) columns list the number of non-hydrogen atoms and hydrogen atoms in the chain respectively. The H(added) column lists the number of hydrogen atoms added and optimized by MolProbity. The Clashes column lists the number of clashes within the asymmetric unit, whereas Symm-Clashes lists symmetry related clashes.

Mol	Chain	Non-H	H(model)	H(added)	Clashes	Symm-Clashes
1	A	5353	0	5227	42	0
1	B	5294	0	5148	59	0
1	C	5210	0	5005	68	0
2	A	16	0	0	1	0
2	B	16	0	0	0	0
2	C	16	0	0	0	0
3	A	91	0	87	10	0
3	B	91	0	87	9	0
3	C	91	0	87	9	0
4	A	1	0	0	0	0
4	B	1	0	0	0	0
4	C	1	0	0	0	0
5	B	1	0	0	0	0
5	C	1	0	0	0	0
6	A	142	0	0	2	0

Continued on next page...

Continued from previous page...

Mol	Chain	Non-H	H(model)	H(added)	Clashes	Symm-Clashes
6	B	130	0	0	2	0
6	C	59	0	0	3	0
All	All	16514	0	15641	186	0

The all-atom clashscore is defined as the number of clashes found per 1000 atoms (including hydrogen atoms). The all-atom clashscore for this structure is 6.

All (186) close contacts within the same asymmetric unit are listed below, sorted by their clash magnitude.

Atom-1	Atom-2	Interatomic distance (Å)	Clash overlap (Å)
1:B:652:MET:HG2	1:B:680:TYR:HB2	1.43	1.00
1:A:509:GLN:O	1:A:513:ASN:ND2	2.11	0.82
1:A:652:MET:HG2	1:A:680:TYR:HB2	1.63	0.81
1:B:237:LEU:HD12	1:C:598:MET:HG3	1.63	0.79
1:C:291:PHE:CD2	3:C:703:B12:H532	2.21	0.75
1:B:49:ASP:OD2	1:B:442:ARG:NH2	2.17	0.75
1:B:291:PHE:CD2	3:B:703:B12:H532	2.21	0.75
1:B:529:PHE:H	1:B:648:GLN:NE2	1.87	0.72
3:B:703:B12:H601	3:B:703:B12:H262	1.72	0.71
1:C:90:LEU:HB3	1:C:152:ILE:HD12	1.74	0.70
1:C:58:THR:HG22	1:C:171:PHE:HE1	1.56	0.69
1:C:652:MET:HG2	1:C:680:TYR:HB2	1.75	0.68
1:A:291:PHE:CD2	3:A:703:B12:H532	2.29	0.68
1:B:552:ARG:NH2	1:B:561:CYS:O	2.27	0.68
1:B:652:MET:CG	1:B:680:TYR:HB2	2.22	0.68
1:A:579:ARG:O	1:A:583:GLU:HG3	1.94	0.67
1:B:609:LEU:HD12	1:B:609:LEU:H	1.59	0.67
1:C:151:GLU:OE2	1:C:428:ARG:NH2	2.27	0.66
1:B:452:ASN:ND2	6:B:803:HOH:O	2.28	0.66
1:C:323:LEU:O	1:C:327:MET:HG3	1.97	0.65
3:C:703:B12:H552	3:C:703:B12:H531	1.79	0.63
1:A:550:LYS:O	1:A:554:THR:HB	1.98	0.63
1:A:18:LEU:HD11	1:A:94:MET:HG3	1.80	0.63
3:A:703:B12:H601	3:A:703:B12:H262	1.80	0.63
1:C:33:ARG:HG2	1:C:34:GLN:O	1.98	0.62
1:C:432:ILE:O	1:C:436:MET:HG3	1.99	0.62
1:C:91:ASP:OD2	1:C:424:ARG:NH2	2.26	0.62
3:B:703:B12:H351	3:B:703:B12:H362	1.82	0.61
3:A:703:B12:H351	3:A:703:B12:H362	1.83	0.60
1:A:301:GLU:O	1:A:305:GLN:HG3	2.02	0.59
1:C:54:ALA:O	1:C:58:THR:HG23	2.02	0.59

Continued on next page...

Continued from previous page...

Atom-1	Atom-2	Interatomic distance (Å)	Clash overlap (Å)
1:C:2:ARG:HG2	1:C:244:PRO:HD3	1.84	0.59
1:A:342:LYS:NZ	1:B:270:ASP:OD2	2.29	0.58
1:B:684:GLU:OE1	1:B:692:ARG:NH1	2.36	0.58
3:C:703:B12:H362	3:C:703:B12:H351	1.84	0.58
1:C:650:LEU:HB2	1:C:680:TYR:CE2	2.38	0.58
1:B:275:LEU:H	1:B:539:GLU:HG2	1.68	0.58
1:A:55:ARG:NH1	6:A:801:HOH:O	2.19	0.58
1:B:598:MET:HG3	1:C:237:LEU:HD12	1.87	0.57
1:A:94:MET:HG2	1:A:188:LEU:HD22	1.86	0.57
1:C:58:THR:HG22	1:C:171:PHE:CE1	2.39	0.57
1:B:101:ASP:OD1	6:B:801:HOH:O	2.18	0.57
1:B:656:ARG:NH1	1:B:679:GLU:OE1	2.37	0.57
1:A:2:ARG:HG2	1:A:244:PRO:HD3	1.86	0.56
1:A:310:PHE:CD1	1:A:311:PRO:HD3	2.40	0.56
1:A:650:LEU:HB2	1:A:680:TYR:CE2	2.39	0.56
1:C:513:ASN:ND2	6:C:803:HOH:O	2.29	0.56
1:B:584:LEU:HD23	1:C:-1:ILE:HD12	1.88	0.56
1:C:547:LYS:HD2	1:C:673:ARG:NH2	2.20	0.56
1:B:652:MET:HG2	1:B:680:TYR:CB	2.28	0.55
3:B:703:B12:H531	3:B:703:B12:H552	1.88	0.55
1:C:340:THR:HG22	1:C:342:LYS:HG3	1.88	0.55
1:C:547:LYS:HD2	1:C:673:ARG:HH22	1.72	0.55
1:B:650:LEU:HB2	1:B:680:TYR:CE2	2.42	0.55
1:B:274:THR:HB	1:B:539:GLU:HG3	1.88	0.54
1:B:609:LEU:HD12	1:B:609:LEU:N	2.22	0.54
1:A:403:GLN:NE2	1:A:488:GLN:HE21	2.06	0.54
1:A:57:PHE:CE2	1:A:431:GLU:OE2	2.61	0.54
1:B:301:GLU:O	1:B:305:GLN:HG3	2.08	0.54
1:C:325:GLN:OE1	6:C:801:HOH:O	2.18	0.53
1:C:75:ASP:O	1:C:79:ARG:HG3	2.08	0.53
1:C:403:GLN:NE2	1:C:488:GLN:OE1	2.41	0.53
1:C:46:LEU:HD13	1:C:359:LEU:HD11	1.90	0.53
1:C:476:ASP:OD2	3:C:703:B12:O8R	2.27	0.52
1:C:151:GLU:HG3	1:C:152:ILE:N	2.25	0.52
1:C:1:MET:HE2	1:C:576:VAL:HG12	1.91	0.52
1:C:640:ARG:HH21	1:C:644:ILE:HD11	1.75	0.52
3:A:703:B12:H301	3:A:703:B12:H203	1.92	0.51
1:A:57:PHE:HE2	1:A:431:GLU:OE2	1.93	0.51
1:B:439:HIS:O	1:B:443:MET:HG3	2.10	0.51
1:C:563:ARG:NH2	1:C:635:ASP:O	2.43	0.51
1:A:118:VAL:HG11	1:A:183:ALA:HA	1.93	0.51

Continued on next page...

Continued from previous page...

Atom-1	Atom-2	Interatomic distance (Å)	Clash overlap (Å)
1:B:310:PHE:CD2	1:B:311:PRO:HD3	2.46	0.51
3:B:703:B12:H301	3:B:703:B12:H203	1.93	0.51
1:B:294:ALA:HB2	1:B:299:LEU:HD12	1.93	0.50
1:C:44:ASP:HB2	1:C:343:GLY:H	1.76	0.50
1:C:426:TYR:CD1	1:C:452:ASN:HB3	2.46	0.50
1:B:117:LEU:HB3	1:B:210:VAL:CG1	2.41	0.50
3:C:703:B12:H262	3:C:703:B12:H601	1.94	0.50
1:B:2:ARG:HG2	1:B:244:PRO:HD3	1.93	0.50
1:C:524:CYS:O	1:C:547:LYS:HE2	2.11	0.50
1:A:47:LEU:O	1:A:51:GLU:HG3	2.12	0.49
1:B:203:ARG:NH1	1:B:252:GLU:OE2	2.46	0.49
1:C:294:ALA:HB2	1:C:299:LEU:HD12	1.93	0.49
1:B:275:LEU:N	1:B:539:GLU:HG2	2.27	0.49
1:A:379:TYR:OH	3:A:703:B12:O58	2.14	0.49
1:B:368:VAL:HG22	1:B:399:MET:HG2	1.95	0.48
1:C:26:ASP:OD1	1:C:27:VAL:N	2.46	0.48
1:B:47:LEU:O	1:B:51:GLU:HG3	2.13	0.48
1:C:286:LYS:HD2	1:C:383:GLU:OE1	2.13	0.48
1:C:359:LEU:HD23	1:C:436:MET:HE3	1.96	0.48
1:C:118:VAL:HG11	1:C:183:ALA:HA	1.95	0.48
1:A:416:TRP:CZ2	1:A:627:PRO:HB3	2.49	0.48
1:B:529:PHE:H	1:B:648:GLN:HE22	1.58	0.48
1:B:549:THR:OG1	3:B:703:B12:H461	2.14	0.48
1:B:187:GLY:HA2	1:B:221:PRO:HA	1.96	0.48
1:C:100:LEU:HD12	1:C:115:HIS:N	2.29	0.47
1:A:11:ASN:HD21	1:A:611:LYS:HD2	1.78	0.47
1:B:542:LYS:HA	1:B:542:LYS:HD2	1.76	0.47
1:B:382:ASP:OD1	1:B:386:GLY:N	2.48	0.46
1:A:535:PHE:CE2	1:A:542:LYS:HE2	2.50	0.46
1:B:123:PHE:HE1	1:B:206:ARG:HG2	1.80	0.46
1:C:151:GLU:OE1	1:C:431:GLU:OE1	2.34	0.46
1:C:55:ARG:O	1:C:58:THR:OG1	2.34	0.46
3:B:703:B12:H421	3:B:703:B12:C10	2.45	0.46
3:C:703:B12:H253	3:C:703:B12:H301	1.70	0.46
1:C:90:LEU:CB	1:C:152:ILE:HD12	2.45	0.45
1:C:416:TRP:CZ2	1:C:627:PRO:HB3	2.51	0.45
1:C:47:LEU:O	1:C:51:GLU:HG3	2.15	0.45
1:A:532:LYS:HE2	1:A:541:TRP:CH2	2.51	0.45
1:C:693:LEU:C	1:C:695:SER:H	2.20	0.45
1:A:310:PHE:CG	1:A:311:PRO:HD3	2.50	0.45
1:C:310:PHE:CD2	1:C:311:PRO:HD3	2.51	0.45

Continued on next page...

Continued from previous page...

Atom-1	Atom-2	Interatomic distance (Å)	Clash overlap (Å)
1:C:403:GLN:HE21	1:C:488:GLN:HG2	1.81	0.45
1:B:280:GLU:OE2	1:B:692:ARG:NH2	2.49	0.45
1:B:416:TRP:CZ2	1:B:627:PRO:HB3	2.52	0.45
1:C:260:ARG:HH11	1:C:260:ARG:HG2	1.81	0.45
3:A:703:B12:H552	3:A:703:B12:H531	1.99	0.45
1:B:535:PHE:CZ	1:B:542:LYS:HE2	2.52	0.45
1:C:168:ARG:NH1	1:C:174:ASP:OD1	2.46	0.45
1:B:118:VAL:HG11	1:B:183:ALA:HA	1.98	0.44
1:A:515:CYS:HB3	2:A:701:SF4:S3	2.56	0.44
1:A:94:MET:HE1	1:A:199:PRO:O	2.17	0.44
1:C:440:CYS:HA	1:C:443:MET:HE2	2.00	0.44
1:B:117:LEU:HB3	1:B:210:VAL:HG12	1.99	0.44
1:B:285:ALA:HB2	1:B:661:PRO:HA	1.99	0.44
1:C:148:ARG:O	1:C:152:ILE:HG12	2.18	0.44
1:A:1:MET:HE2	1:A:576:VAL:HA	2.00	0.44
1:A:324:ILE:CG1	1:A:427:MET:HB3	2.48	0.44
1:A:521:GLU:CB	1:A:567:MET:HG3	2.48	0.44
1:C:135:GLU:HG3	6:C:832:HOH:O	2.17	0.44
1:B:424:ARG:HD3	1:B:424:ARG:C	2.38	0.43
1:C:90:LEU:HB3	1:C:152:ILE:CD1	2.46	0.43
1:B:1:MET:N	1:B:1:MET:SD	2.90	0.43
1:B:255:PRO:HD2	1:B:258:MET:SD	2.58	0.43
3:A:703:B12:H541	3:A:703:B12:H602	1.81	0.43
1:C:532:LYS:HE2	1:C:541:TRP:CH2	2.54	0.43
1:A:291:PHE:HZ	1:A:552:ARG:NH2	2.15	0.43
1:B:374:GLU:O	1:B:377:MET:HB2	2.18	0.43
3:B:703:B12:H301	3:B:703:B12:H253	1.82	0.43
1:C:286:LYS:HE2	1:C:455:SER:O	2.18	0.43
1:C:304:LYS:C	1:C:304:LYS:HD3	2.38	0.43
3:A:703:B12:H301	3:A:703:B12:H253	1.81	0.43
1:B:2:ARG:HH22	1:B:573:GLU:HG2	1.84	0.43
3:C:703:B12:H471	3:C:703:B12:H482	1.81	0.43
1:B:509:GLN:O	1:B:513:ASN:HB2	2.19	0.43
1:C:393:HIS:HB2	1:C:493:THR:HB	2.00	0.43
1:A:514:GLN:HB3	6:A:915:HOH:O	2.19	0.42
1:C:519:ALA:HA	1:C:527:ILE:HB	2.01	0.42
3:A:703:B12:H482	3:A:703:B12:H471	1.79	0.42
1:C:123:PHE:HE1	1:C:206:ARG:HG2	1.84	0.42
1:C:260:ARG:NH1	1:C:260:ARG:HG2	2.34	0.42
1:A:393:HIS:HB2	1:A:493:THR:HB	2.00	0.42
1:A:485:PRO:O	1:A:565:MET:HG2	2.18	0.42

Continued on next page...

Continued from previous page...

Atom-1	Atom-2	Interatomic distance (Å)	Clash overlap (Å)
1:B:310:PHE:CG	1:B:311:PRO:HD3	2.55	0.42
1:B:628:ARG:CZ	1:B:629:MET:HE2	2.49	0.42
1:A:664:THR:HG22	1:A:665:LEU:N	2.35	0.42
1:A:519:ALA:HA	1:A:527:ILE:HB	2.02	0.42
1:B:18:LEU:HD11	1:B:94:MET:HG3	2.01	0.42
1:B:282:GLN:HB2	1:B:655:PRO:HG2	2.02	0.41
1:A:542:LYS:HD2	1:A:542:LYS:HA	1.69	0.41
1:A:566:LYS:HG2	1:A:567:MET:HE2	2.03	0.41
1:B:125:ARG:O	1:B:362:TYR:HD1	2.03	0.41
1:B:686:PRO:O	1:B:690:ARG:HG3	2.20	0.41
1:A:255:PRO:HD2	1:A:258:MET:HE2	2.02	0.41
1:C:100:LEU:HD12	1:C:114:THR:C	2.40	0.41
1:C:33:ARG:CG	1:C:34:GLN:N	2.81	0.41
1:B:539:GLU:OE2	1:B:690:ARG:NH2	2.54	0.41
1:C:180:ALA:HA	1:C:196:LEU:HD11	2.02	0.41
1:B:393:HIS:HB2	1:B:493:THR:HB	2.02	0.41
1:C:136:TRP:CD1	1:C:136:TRP:N	2.89	0.41
1:C:151:GLU:CG	1:C:152:ILE:N	2.84	0.41
1:A:324:ILE:HG13	1:A:427:MET:HB3	2.02	0.41
1:B:148:ARG:O	1:B:151:GLU:HB3	2.21	0.41
3:C:703:B12:H561	3:C:703:B12:H5R1	2.03	0.41
1:C:476:ASP:CG	3:C:703:B12:H0R8	2.24	0.41
1:A:157:SER:O	1:A:161:ARG:HG3	2.22	0.41
1:A:123:PHE:HE1	1:A:206:ARG:HG2	1.86	0.41
3:B:703:B12:H482	3:B:703:B12:H471	1.87	0.40
1:C:310:PHE:CG	1:C:311:PRO:HD3	2.56	0.40
3:A:703:B12:O28	3:A:703:B12:H3	2.21	0.40
1:B:160:VAL:HA	1:B:163:MET:HE2	2.03	0.40
1:C:1:MET:HE3	1:C:576:VAL:HA	2.04	0.40
1:A:506:PHE:HB2	1:A:586:ILE:HG12	2.02	0.40
1:B:122:GLN:CD	1:B:203:ARG:HD2	2.41	0.40
1:C:44:ASP:HB2	1:C:343:GLY:N	2.35	0.40

There are no symmetry-related clashes.

5.3 Torsion angles [i](#)

5.3.1 Protein backbone [i](#)

In the following table, the Percentiles column shows the percent Ramachandran outliers of the chain as a percentile score with respect to all X-ray entries followed by that with respect to entries

of similar resolution.

The Analysed column shows the number of residues for which the backbone conformation was analysed, and the total number of residues.

Mol	Chain	Analysed	Favoured	Allowed	Outliers	Percentiles	
1	A	699/725 (96%)	683 (98%)	13 (2%)	3 (0%)	34	29
1	B	692/725 (95%)	675 (98%)	16 (2%)	1 (0%)	51	51
1	C	692/725 (95%)	666 (96%)	24 (4%)	2 (0%)	41	36
All	All	2083/2175 (96%)	2024 (97%)	53 (2%)	6 (0%)	41	36

All (6) Ramachandran outliers are listed below:

Mol	Chain	Res	Type
1	A	46	LEU
1	A	639	ASP
1	B	590	GLU
1	C	214	TYR
1	C	101	ASP
1	A	638	PRO

5.3.2 Protein sidechains [i](#)

In the following table, the Percentiles column shows the percent sidechain outliers of the chain as a percentile score with respect to all X-ray entries followed by that with respect to entries of similar resolution.

The Analysed column shows the number of residues for which the sidechain conformation was analysed, and the total number of residues.

Mol	Chain	Analysed	Rotameric	Outliers	Percentiles	
1	A	540/569 (95%)	539 (100%)	1 (0%)	93	95
1	B	532/569 (94%)	531 (100%)	1 (0%)	93	95
1	C	510/569 (90%)	509 (100%)	1 (0%)	93	95
All	All	1582/1707 (93%)	1579 (100%)	3 (0%)	93	95

All (3) residues with a non-rotameric sidechain are listed below:

Mol	Chain	Res	Type
1	A	144	ARG
1	B	144	ARG
1	C	144	ARG

Some sidechains can be flipped to improve hydrogen bonding and reduce clashes. All (8) such sidechains are listed below:

Mol	Chain	Res	Type
1	A	11	ASN
1	A	403	GLN
1	B	325	GLN
1	B	452	ASN
1	B	488	GLN
1	B	648	GLN
1	C	403	GLN
1	C	488	GLN

5.3.3 RNA [i](#)

There are no RNA molecules in this entry.

5.4 Non-standard residues in protein, DNA, RNA chains [i](#)

There are no non-standard protein/DNA/RNA residues in this entry.

5.5 Carbohydrates [i](#)

There are no monosaccharides in this entry.

5.6 Ligand geometry [i](#)

Of 14 ligands modelled in this entry, 5 are monoatomic - leaving 9 for Mogul analysis.

In the following table, the Counts columns list the number of bonds (or angles) for which Mogul statistics could be retrieved, the number of bonds (or angles) that are observed in the model and the number of bonds (or angles) that are defined in the Chemical Component Dictionary. The Link column lists molecule types, if any, to which the group is linked. The Z score for a bond length (or angle) is the number of standard deviations the observed value is removed from the expected value. A bond length (or angle) with $|Z| > 2$ is considered an outlier worth inspection. RMSZ is the root-mean-square of all Z scores of the bond lengths (or angles).

Mol	Type	Chain	Res	Link	Bond lengths			Bond angles		
					Counts	RMSZ	$\# Z > 2$	Counts	RMSZ	$\# Z > 2$
2	SF4	B	702	1	0,12,12	0.00	-	-		
2	SF4	C	701	1	0,12,12	0.00	-	-		
2	SF4	B	701	1	0,12,12	0.00	-	-		
3	B12	B	703	6	80,101,101	1.17	4 (5%)	101,166,166	2.31	16 (15%)

Mol	Type	Chain	Res	Link	Bond lengths			Bond angles		
					Counts	RMSZ	# Z > 2	Counts	RMSZ	# Z > 2
3	B12	C	703	6	80,101,101	1.11	4 (5%)	101,166,166	2.32	23 (22%)
3	B12	A	703	6	80,101,101	1.17	7 (8%)	101,166,166	2.57	21 (20%)
2	SF4	A	701	1	0,12,12	0.00	-	-		
2	SF4	C	702	1	0,12,12	0.00	-	-		
2	SF4	A	702	1	0,12,12	0.00	-	-		

In the following table, the Chirals column lists the number of chiral outliers, the number of chiral centers analysed, the number of these observed in the model and the number defined in the Chemical Component Dictionary. Similar counts are reported in the Torsion and Rings columns. '-' means no outliers of that kind were identified.

Mol	Type	Chain	Res	Link	Chirals	Torsions	Rings
2	SF4	B	702	1	-	-	0/6/5/5
3	B12	C	703	6	1/1/36/38	16/51/223/223	0/3/11/11
2	SF4	B	701	1	-	-	0/6/5/5
3	B12	B	703	6	1/1/36/38	6/51/223/223	0/3/11/11
2	SF4	C	701	1	-	-	0/6/5/5
2	SF4	A	701	1	-	-	0/6/5/5
3	B12	A	703	6	1/1/36/38	11/51/223/223	0/3/11/11
2	SF4	C	702	1	-	-	0/6/5/5
2	SF4	A	702	1	-	-	0/6/5/5

All (15) bond length outliers are listed below:

Mol	Chain	Res	Type	Atoms	Z	Observed(Å)	Ideal(Å)
3	B	703	B12	C11-C10	-5.87	1.31	1.40
3	A	703	B12	C11-C10	-5.52	1.31	1.40
3	C	703	B12	C11-C10	-5.10	1.32	1.40
3	B	703	B12	C8B-C9B	3.95	1.48	1.40
3	A	703	B12	C8B-C9B	3.90	1.48	1.40
3	C	703	B12	C8B-C9B	3.90	1.48	1.40
3	A	703	B12	C6B-C5B	3.43	1.49	1.40
3	B	703	B12	C6B-C5B	3.25	1.49	1.40
3	C	703	B12	C6B-C5B	3.14	1.48	1.40
3	C	703	B12	C2-C3	-2.53	1.54	1.58
3	A	703	B12	C2-C3	-2.36	1.54	1.58
3	B	703	B12	C2-C3	-2.32	1.54	1.58
3	A	703	B12	C16-C15	-2.11	1.33	1.41
3	A	703	B12	O6R-C1R	2.09	1.44	1.41
3	A	703	B12	C1-C19	-2.08	1.50	1.55

All (60) bond angle outliers are listed below:

Mol	Chain	Res	Type	Atoms	Z	Observed(°)	Ideal(°)
3	A	703	B12	C20-C1-C19	-13.18	96.65	109.36
3	B	703	B12	C20-C1-C19	-11.88	97.91	109.36
3	C	703	B12	C20-C1-C19	-11.10	98.66	109.36
3	B	703	B12	C12-C11-C10	-8.24	110.67	124.64
3	A	703	B12	C12-C11-C10	-7.96	111.14	124.64
3	C	703	B12	C1-C19-C18	7.85	134.92	121.93
3	C	703	B12	C12-C11-C10	-7.84	111.34	124.64
3	B	703	B12	C1-C19-C18	7.18	133.80	121.93
3	A	703	B12	C1-C19-C18	6.99	133.49	121.93
3	A	703	B12	C1-C19-N24	6.50	113.55	106.24
3	C	703	B12	C19-C1-N21	6.47	108.79	102.16
3	A	703	B12	C2-C1-C19	6.42	128.72	118.60
3	B	703	B12	C1-C19-N24	6.39	113.42	106.24
3	A	703	B12	C47-C12-C46	6.29	122.92	109.73
3	C	703	B12	C47-C12-C46	6.16	122.65	109.73
3	B	703	B12	C19-C1-N21	5.71	108.01	102.16
3	C	703	B12	C1-C19-N24	5.62	112.57	106.24
3	A	703	B12	C26-C2-C1	5.49	118.56	110.02
3	A	703	B12	C19-C1-N21	5.30	107.59	102.16
3	A	703	B12	C55-C56-C57	-5.27	99.72	111.23
3	B	703	B12	C47-C12-C46	5.01	120.23	109.73
3	B	703	B12	C2-C1-C19	4.83	126.22	118.60
3	B	703	B12	C26-C2-C1	4.82	117.51	110.02
3	C	703	B12	C2-C1-C19	4.63	125.91	118.60
3	A	703	B12	C56-C57-N59	4.57	124.11	116.42
3	B	703	B12	C25-C2-C1	-4.26	107.47	113.80
3	C	703	B12	C26-C2-C1	4.11	116.42	110.02
3	A	703	B12	C18-C60-C61	-3.62	104.95	113.97
3	A	703	B12	C25-C2-C1	-3.58	108.47	113.80
3	B	703	B12	C18-C60-C61	-3.58	105.04	113.97
3	C	703	B12	C18-C60-C61	-3.45	105.37	113.97
3	C	703	B12	C25-C2-C1	-3.33	108.86	113.80
3	A	703	B12	C5-C6-N22	-3.31	118.76	124.81
3	A	703	B12	O58-C57-C56	-3.06	116.41	122.02
3	C	703	B12	C5-C6-N22	-3.04	119.26	124.81
3	B	703	B12	C6-C5-C4	-2.93	119.70	124.27
3	B	703	B12	C5-C6-N22	-2.86	119.59	124.81
3	B	703	B12	C30-C3-C2	-2.81	113.18	119.13
3	C	703	B12	C30-C3-C2	-2.75	113.31	119.13
3	C	703	B12	C2P-C1P-N59	-2.74	108.89	112.93
3	C	703	B12	C6-C5-C4	-2.73	120.01	124.27
3	A	703	B12	C6-C5-C4	-2.61	120.19	124.27

Continued on next page...

Continued from previous page...

Mol	Chain	Res	Type	Atoms	Z	Observed(°)	Ideal(°)
3	A	703	B12	C56-C55-C17	2.54	120.42	115.50
3	B	703	B12	C54-C17-C18	-2.51	109.28	112.98
3	C	703	B12	C60-C18-C19	2.47	121.02	114.62
3	C	703	B12	C8-C9-N22	2.43	114.16	111.12
3	A	703	B12	C16-C15-C14	-2.41	120.52	124.27
3	B	703	B12	C2P-C1P-N59	-2.39	109.41	112.93
3	A	703	B12	C54-C17-C18	-2.36	109.49	112.98
3	A	703	B12	C30-C3-C2	-2.29	114.28	119.13
3	B	703	B12	C36-C7-C8	-2.27	108.01	112.11
3	A	703	B12	C36-C7-C8	-2.26	108.03	112.11
3	C	703	B12	C2-C26-C27	-2.21	109.02	115.22
3	C	703	B12	C37-C7-C8	-2.19	102.49	108.37
3	C	703	B12	C25-C2-C3	-2.18	112.26	115.58
3	C	703	B12	C16-C15-C14	-2.17	120.88	124.27
3	C	703	B12	C9-C10-C11	-2.16	123.37	130.91
3	C	703	B12	C54-C17-C18	-2.08	109.92	112.98
3	A	703	B12	C3-C4-C5	-2.02	124.37	131.68
3	C	703	B12	C3-C4-C5	-2.00	124.42	131.68

All (3) chirality outliers are listed below:

Mol	Chain	Res	Type	Atom
3	B	703	B12	C19
3	C	703	B12	C19
3	A	703	B12	C19

All (33) torsion outliers are listed below:

Mol	Chain	Res	Type	Atoms
3	B	703	B12	C1P-C2P-O3-P
3	B	703	B12	C3P-C2P-O3-P
3	C	703	B12	C4-C3-C30-C31
3	C	703	B12	C1P-C2P-O3-P
3	C	703	B12	C3P-C2P-O3-P
3	C	703	B12	C3R-C4R-C5R-O8R
3	A	703	B12	C56-C57-N59-C1P
3	A	703	B12	O58-C57-N59-C1P
3	A	703	B12	N59-C1P-C2P-C3P
3	A	703	B12	N59-C1P-C2P-O3
3	A	703	B12	C1P-C2P-O3-P
3	A	703	B12	C3P-C2P-O3-P
3	C	703	B12	O6R-C4R-C5R-O8R

Continued on next page...

Continued from previous page...

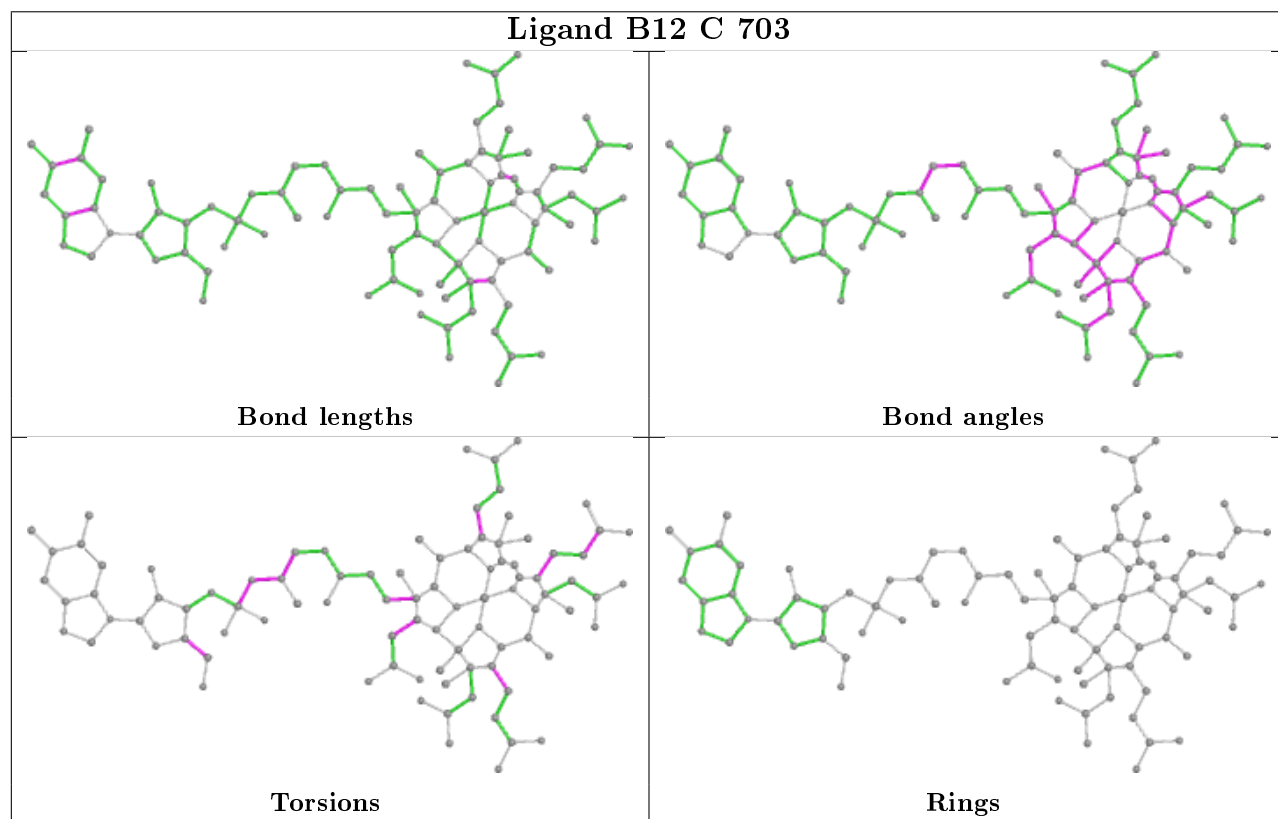
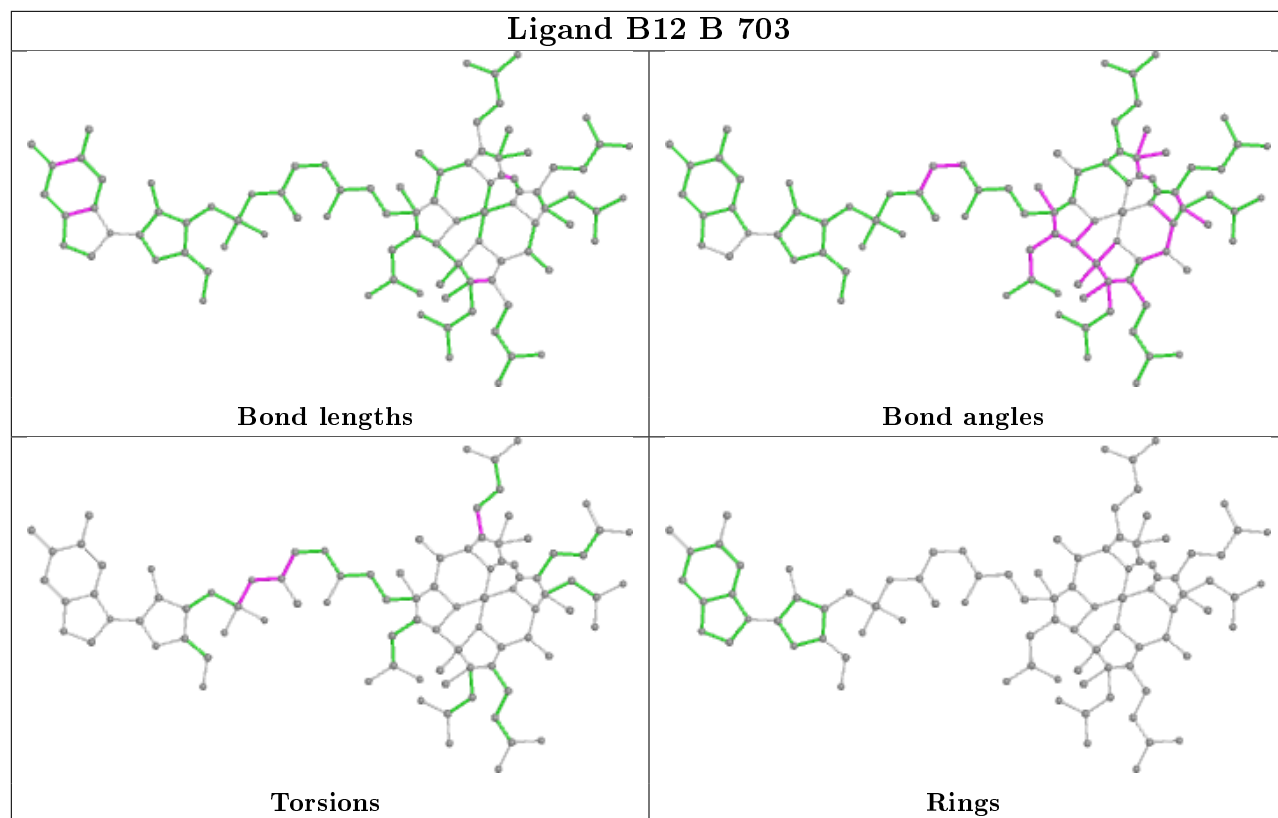
Mol	Chain	Res	Type	Atoms
3	C	703	B12	C16-C17-C55-C56
3	B	703	B12	N59-C1P-C2P-C3P
3	A	703	B12	C12-C13-C48-C49
3	C	703	B12	C2-C3-C30-C31
3	C	703	B12	C12-C13-C48-C49
3	C	703	B12	C2P-O3-P-O2
3	C	703	B12	C18-C17-C55-C56
3	A	703	B12	C2P-O3-P-O2
3	C	703	B12	N59-C1P-C2P-C3P
3	B	703	B12	C2P-O3-P-O2
3	B	703	B12	C14-C13-C48-C49
3	C	703	B12	C42-C41-C8-C9
3	C	703	B12	C14-C13-C48-C49
3	A	703	B12	C14-C13-C48-C49
3	B	703	B12	C12-C13-C48-C49
3	A	703	B12	C17-C18-C60-C61
3	A	703	B12	C19-C18-C60-C61
3	C	703	B12	C19-C18-C60-C61
3	C	703	B12	C41-C42-C43-N45
3	C	703	B12	C41-C42-C43-O44

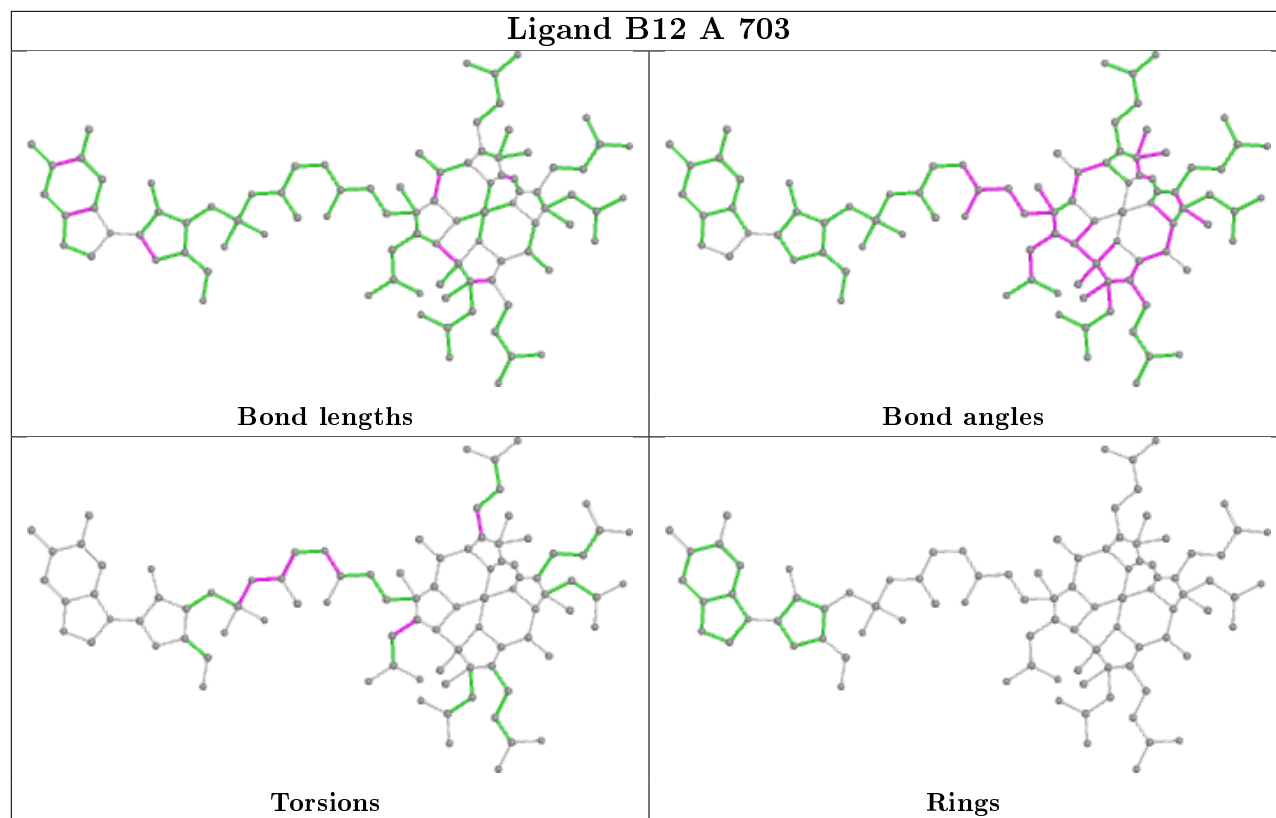
There are no ring outliers.

4 monomers are involved in 29 short contacts:

Mol	Chain	Res	Type	Clashes	Symm-Clashes
3	B	703	B12	9	0
3	C	703	B12	9	0
3	A	703	B12	10	0
2	A	701	SF4	1	0

The following is a two-dimensional graphical depiction of Mogul quality analysis of bond lengths, bond angles, torsion angles, and ring geometry for all instances of the Ligand of Interest. In addition, ligands with molecular weight > 250 and outliers as shown on the validation Tables will also be included. For torsion angles, if less than 5% of the Mogul distribution of torsion angles is within 10 degrees of the torsion angle in question, then that torsion angle is considered an outlier. Any bond that is central to one or more torsion angles identified as an outlier by Mogul will be highlighted in the graph. For rings, the root-mean-square deviation (RMSD) between the ring in question and similar rings identified by Mogul is calculated over all ring torsion angles. If the average RMSD is greater than 60 degrees and the minimal RMSD between the ring in question and any Mogul-identified rings is also greater than 60 degrees, then that ring is considered an outlier. The outliers are highlighted in purple. The color gray indicates Mogul did not find sufficient equivalents in the CSD to analyse the geometry.





5.7 Other polymers [i](#)

There are no such residues in this entry.

5.8 Polymer linkage issues [i](#)

There are no chain breaks in this entry.

6 Fit of model and data [i](#)

6.1 Protein, DNA and RNA chains [i](#)

In the following table, the column labelled '#RSRZ > 2' contains the number (and percentage) of RSRZ outliers, followed by percent RSRZ outliers for the chain as percentile scores relative to all X-ray entries and entries of similar resolution. The OWAB column contains the minimum, median, 95th percentile and maximum values of the occupancy-weighted average B-factor per residue. The column labelled 'Q < 0.9' lists the number of (and percentage) of residues with an average occupancy less than 0.9.

Mol	Chain	Analysed	<RSRZ>	#RSRZ>2	OWAB(Å ²)	Q<0.9
1	A	701/725 (96%)	-0.20	0 100 100	19, 30, 45, 78	0
1	B	695/725 (95%)	-0.34	1 (0%) 95 96	23, 32, 49, 90	0
1	C	696/725 (96%)	-0.04	17 (2%) 59 65	30, 46, 66, 87	0
All	All	2092/2175 (96%)	-0.19	18 (0%) 84 87	19, 35, 60, 90	0

All (18) RSRZ outliers are listed below:

Mol	Chain	Res	Type	RSRZ
1	C	109	CYS	3.1
1	C	166	PRO	3.1
1	C	107	GLY	2.8
1	C	373	ALA	2.8
1	C	71	ALA	2.5
1	C	73	PRO	2.4
1	C	-3	ALA	2.3
1	C	623	VAL	2.3
1	C	227	ASP	2.3
1	C	46	LEU	2.2
1	C	197	VAL	2.2
1	C	215	ALA	2.2
1	C	214	TYR	2.1
1	C	98	CYS	2.1
1	C	22	ALA	2.1
1	C	114	THR	2.0
1	B	639	ASP	2.0
1	C	226	GLY	2.0

6.2 Non-standard residues in protein, DNA, RNA chains [i](#)

There are no non-standard protein/DNA/RNA residues in this entry.

6.3 Carbohydrates [i](#)

There are no monosaccharides in this entry.

6.4 Ligands [i](#)

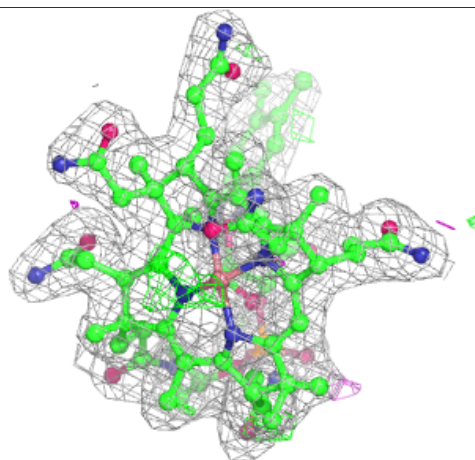
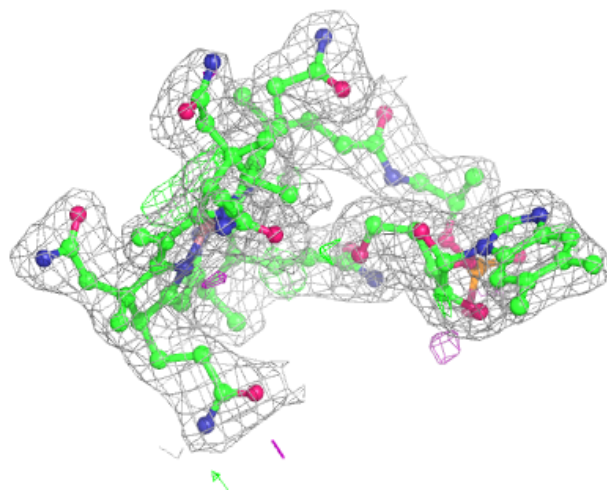
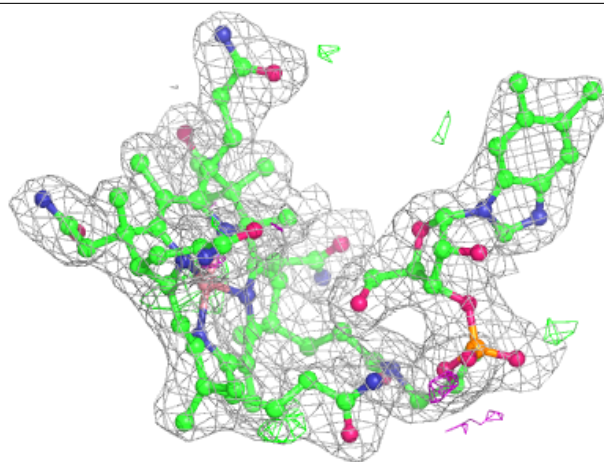
In the following table, the Atoms column lists the number of modelled atoms in the group and the number defined in the chemical component dictionary. The B-factors column lists the minimum, median, 95th percentile and maximum values of B factors of atoms in the group. The column labelled 'Q< 0.9' lists the number of atoms with occupancy less than 0.9.

Mol	Type	Chain	Res	Atoms	RSCC	RSR	B-factors(Å ²)	Q<0.9
4	NA	C	704	1/1	0.91	0.08	51,51,51,51	0
4	NA	B	704	1/1	0.93	0.07	41,41,41,41	0
4	NA	A	704	1/1	0.94	0.11	38,38,38,38	0
3	B12	C	703	91/91	0.97	0.11	29,39,45,47	0
5	CL	B	705	1/1	0.97	0.05	54,54,54,54	0
2	SF4	B	701	8/8	0.98	0.12	21,29,31,31	0
3	B12	A	703	91/91	0.98	0.12	16,23,28,35	0
3	B12	B	703	91/91	0.98	0.12	20,26,30,35	0
2	SF4	A	702	8/8	0.98	0.14	24,26,28,29	0
5	CL	C	705	1/1	0.99	0.07	51,51,51,51	0
2	SF4	C	701	8/8	0.99	0.11	34,36,39,39	0
2	SF4	A	701	8/8	0.99	0.14	20,23,27,28	0
2	SF4	C	702	8/8	0.99	0.11	36,38,40,41	0
2	SF4	B	702	8/8	0.99	0.11	29,32,38,39	0

The following is a graphical depiction of the model fit to experimental electron density of all instances of the Ligand of Interest. In addition, ligands with molecular weight > 250 and outliers as shown on the geometry validation Tables will also be included. Each fit is shown from different orientation to approximate a three-dimensional view.

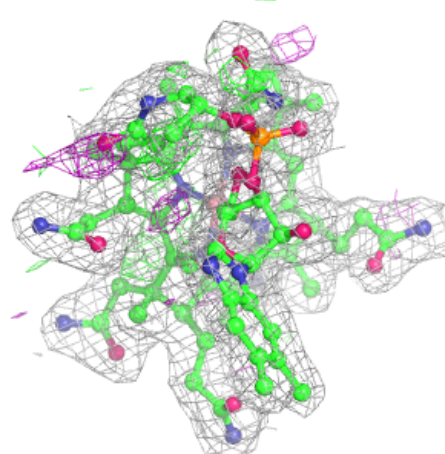
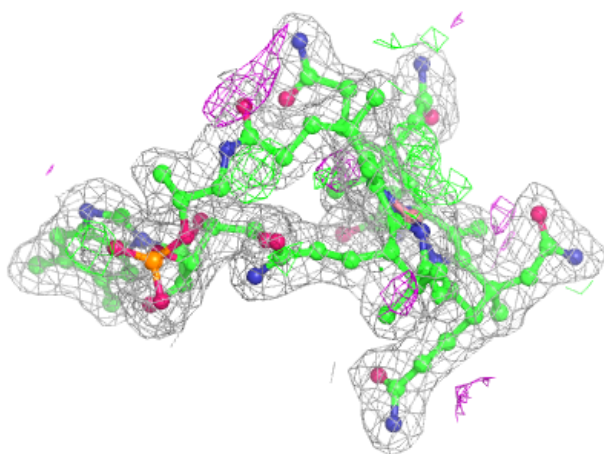
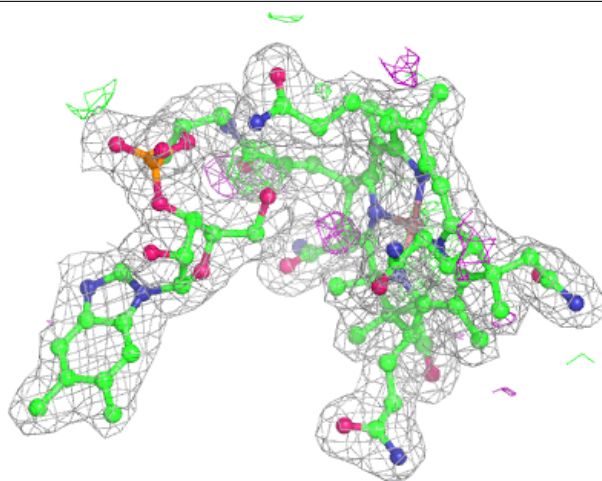
Electron density around B12 C 703:

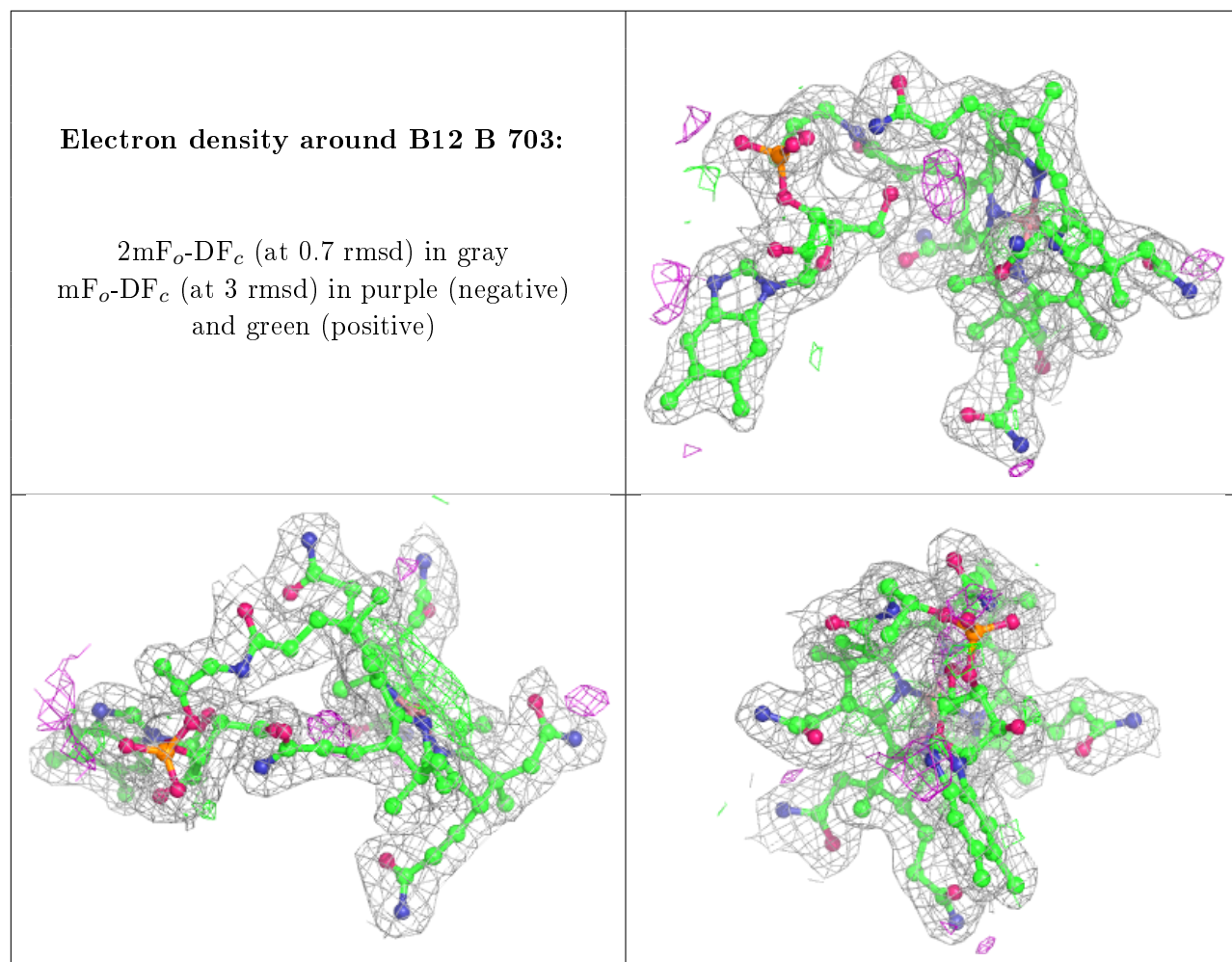
$2mF_o-DF_c$ (at 0.7 rmsd) in gray
 mF_o-DF_c (at 3 rmsd) in purple (negative)
and green (positive)



Electron density around B12 A 703:

$2mF_o-DF_c$ (at 0.7 rmsd) in gray
 mF_o-DF_c (at 3 rmsd) in purple (negative)
and green (positive)





6.5 Other polymers [i](#)

There are no such residues in this entry.