



Full wwPDB X-ray Structure Validation Report ⓘ

Jun 24, 2024 – 02:48 PM EDT

PDB ID : 7B19
Title : Mutant Myosin-II-GGG motor domain
Authors : Ewert, W.; Preller, M.
Deposited on : 2020-11-24
Resolution : 2.55 Å(reported)

This is a Full wwPDB X-ray Structure Validation Report for a publicly released PDB entry.

We welcome your comments at validation@mail.wwpdb.org

A user guide is available at

<https://www.wwpdb.org/validation/2017/XrayValidationReportHelp>

with specific help available everywhere you see the ⓘ symbol.

The types of validation reports are described at

<http://www.wwpdb.org/validation/2017/FAQs#types>.

The following versions of software and data (see [references ⓘ](#)) were used in the production of this report:

MolProbity : 4.02b-467
Mogul : 2022.3.0, CSD as543be (2022)
Xtriage (Phenix) : 1.20.1
EDS : 2.37.1
buster-report : 1.1.7 (2018)
Percentile statistics : 20191225.v01 (using entries in the PDB archive December 25th 2019)
Refmac : 5.8.0158
CCP4 : 7.0.044 (Gargrove)
Ideal geometry (proteins) : Engh & Huber (2001)
Ideal geometry (DNA, RNA) : Parkinson et al. (1996)
Validation Pipeline (wwPDB-VP) : 2.37.1

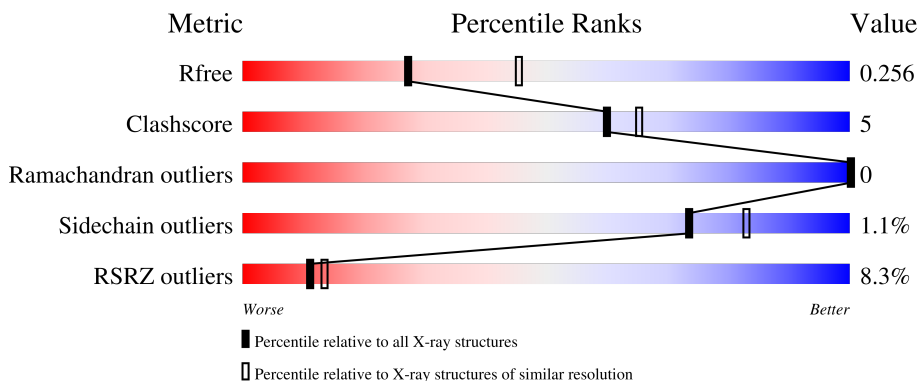
1 Overall quality at a glance

The following experimental techniques were used to determine the structure:

X-RAY DIFFRACTION

The reported resolution of this entry is 2.55 Å.

Percentile scores (ranging between 0-100) for global validation metrics of the entry are shown in the following graphic. The table shows the number of entries on which the scores are based.



Metric	Whole archive (#Entries)	Similar resolution (#Entries, resolution range(Å))
R_{free}	130704	1284 (2.56-2.52)
Clashscore	141614	1332 (2.56-2.52)
Ramachandran outliers	138981	1315 (2.56-2.52)
Sidechain outliers	138945	1315 (2.56-2.52)
RSRZ outliers	127900	1272 (2.56-2.52)

The table below summarises the geometric issues observed across the polymeric chains and their fit to the electron density. The red, orange, yellow and green segments of the lower bar indicate the fraction of residues that contain outliers for ≥ 3 , 2, 1 and 0 types of geometric quality criteria respectively. A grey segment represents the fraction of residues that are not modelled. The numeric value for each fraction is indicated below the corresponding segment, with a dot representing fractions $\leq 5\%$. The upper red bar (where present) indicates the fraction of residues that have poor fit to the electron density. The numeric value is given above the bar.

Mol	Chain	Length	Quality of chain
1	A	789	

2 Entry composition [i](#)

There are 8 unique types of molecules in this entry. The entry contains 11930 atoms, of which 5801 are hydrogens and 0 are deuteriums.

In the tables below, the ZeroOcc column contains the number of atoms modelled with zero occupancy, the AltConf column contains the number of residues with at least one atom in alternate conformation and the Trace column contains the number of residues modelled with at most 2 atoms.

- Molecule 1 is a protein called Myosin-2 heavy chain,Myosin-2 heavy chain.

Mol	Chain	Residues	Atoms						ZeroOcc	AltConf	Trace
			Total	C	H	N	O	S			
1	A	750	11603	3750	5697	1016	1124	16	0	0	0

There are 31 discrepancies between the modelled and reference sequences:

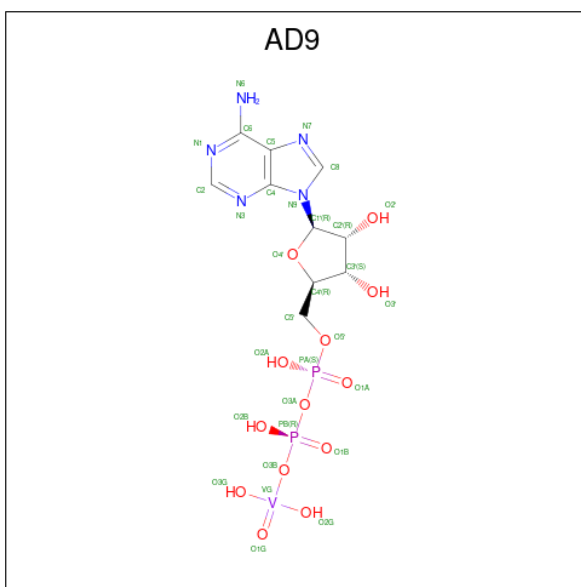
Chain	Residue	Modelled	Actual	Comment	Reference
A	-10	MET	-	initiating methionine	UNP P08799
A	-9	HIS	-	expression tag	UNP P08799
A	-8	HIS	-	expression tag	UNP P08799
A	-7	HIS	-	expression tag	UNP P08799
A	-6	HIS	-	expression tag	UNP P08799
A	-5	HIS	-	expression tag	UNP P08799
A	-4	HIS	-	expression tag	UNP P08799
A	-3	HIS	-	expression tag	UNP P08799
A	-2	ASP	-	expression tag	UNP P08799
A	-1	GLY	-	expression tag	UNP P08799
A	0	THR	-	expression tag	UNP P08799
A	1	GLU	-	expression tag	UNP P08799
A	647	GLY	-	linker	UNP P08799
A	648	GLY	-	linker	UNP P08799
A	649	GLY	-	linker	UNP P08799
A	763	LEU	-	expression tag	UNP P08799
A	764	GLU	-	expression tag	UNP P08799
A	765	SER	-	expression tag	UNP P08799
A	766	ASN	-	expression tag	UNP P08799
A	767	GLU	-	expression tag	UNP P08799
A	768	PRO	-	expression tag	UNP P08799
A	769	PRO	-	expression tag	UNP P08799
A	770	MET	-	expression tag	UNP P08799
A	771	ASP	-	expression tag	UNP P08799
A	772	PHE	-	expression tag	UNP P08799
A	773	ASP	-	expression tag	UNP P08799
A	774	ASP	-	expression tag	UNP P08799

Continued on next page...

Continued from previous page...

Chain	Residue	Modelled	Actual	Comment	Reference
A	775	ASP	-	expression tag	UNP P08799
A	776	ILE	-	expression tag	UNP P08799
A	777	PRO	-	expression tag	UNP P08799
A	778	PHE	-	expression tag	UNP P08799

- Molecule 2 is ADP METAVANADATE (three-letter code: AD9) (formula: $C_{10}H_{16}N_5O_{13}P_2V$).



Mol	Chain	Residues	Atoms							ZeroOcc	AltConf
			Total	C	H	N	O	P	V		
2	A	1	45	10	14	5	13	2	1	0	0

- Molecule 3 is MAGNESIUM ION (three-letter code: MG) (formula: Mg).

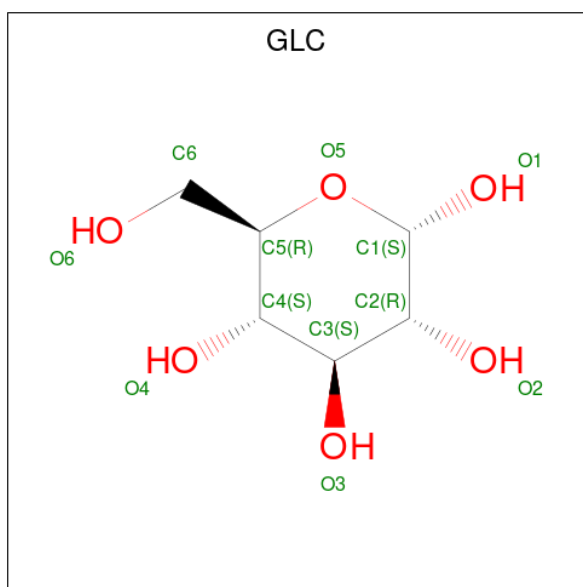
Mol	Chain	Residues	Atoms		ZeroOcc	AltConf
3	A	1	Total	Mg	0	0
			1	1		

- Molecule 4 is GLYCEROL (three-letter code: GOL) (formula: $C_3H_8O_3$).



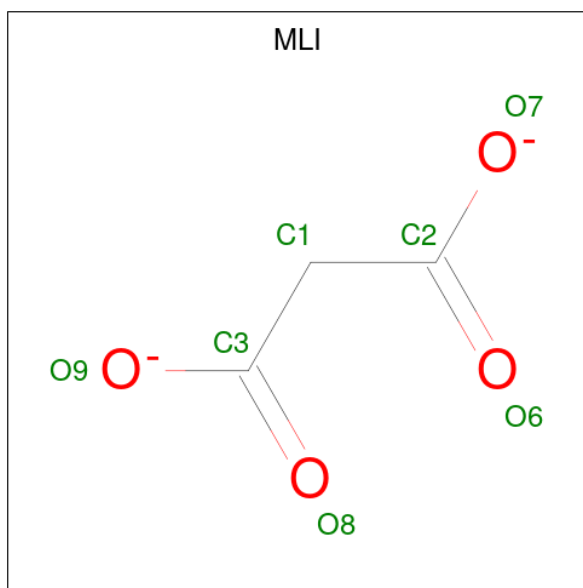
Mol	Chain	Residues	Atoms				ZeroOcc	AltConf
4	A	1	Total	C	H	O	0	0
			14	3	8	3		
4	A	1	Total	C	H	O	0	0
			14	3	8	3		
4	A	1	Total	C	H	O	0	0
			14	3	8	3		
4	A	1	Total	C	H	O	0	0
			14	3	8	3		
4	A	1	Total	C	H	O	0	0
			14	3	8	3		

- Molecule 5 is alpha-D-glucofuranose (three-letter code: GLC) (formula: C₆H₁₂O₆).



Mol	Chain	Residues	Atoms				ZeroOcc	AltConf
			Total	C	H	O		
5	A	1	24	6	12	6	0	0

- Molecule 6 is MALONATE ION (three-letter code: MLI) (formula: $C_3H_2O_4$).



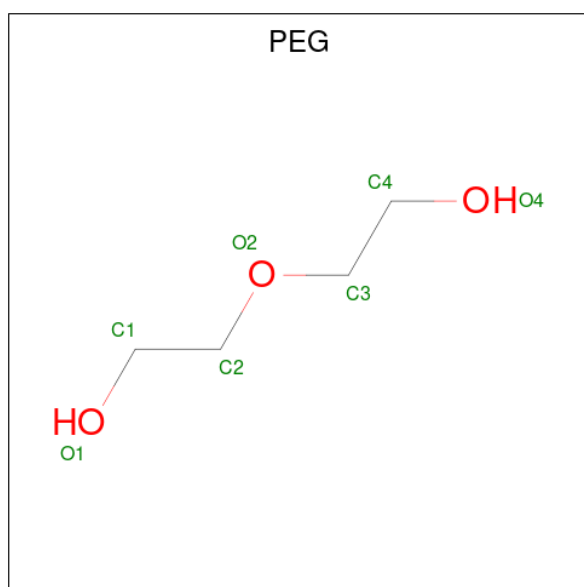
Mol	Chain	Residues	Atoms				ZeroOcc	AltConf
			Total	C	H	O		
6	A	1	9	3	2	4	0	0
6	A	1	9	3	2	4	0	0
6	A	1	9	3	2	4	0	0

Continued on next page...

Continued from previous page...

Mol	Chain	Residues	Atoms				ZeroOcc	AltConf
6	A	1	Total	C	H	O	0	0
			9	3	2	4		
6	A	1	Total	C	H	O	0	0
			9	3	2	4		

- Molecule 7 is DI(HYDROXYETHYL)ETHER (three-letter code: PEG) (formula: C₄H₁₀O₃).



Mol	Chain	Residues	Atoms				ZeroOcc	AltConf
7	A	1	Total	C	H	O	0	0
			17	4	10	3		
7	A	1	Total	C	H	O	0	0
			17	4	10	3		

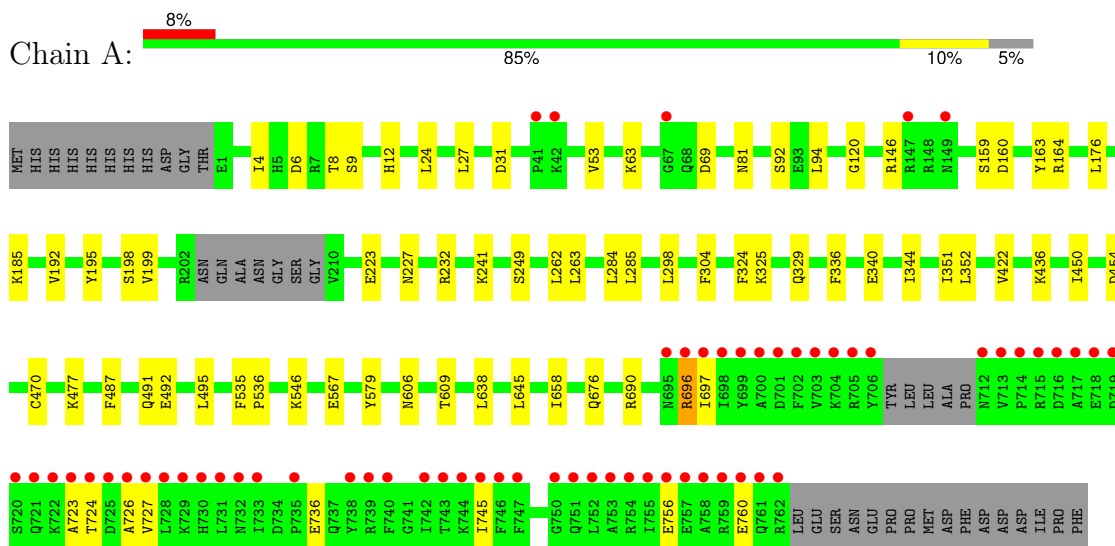
- Molecule 8 is water.

Mol	Chain	Residues	Atoms		ZeroOcc	AltConf
8	A	94	Total	O	0	0
			94	94		

3 Residue-property plots

These plots are drawn for all protein, RNA, DNA and oligosaccharide chains in the entry. The first graphic for a chain summarises the proportions of the various outlier classes displayed in the second graphic. The second graphic shows the sequence view annotated by issues in geometry and electron density. Residues are color-coded according to the number of geometric quality criteria for which they contain at least one outlier: green = 0, yellow = 1, orange = 2 and red = 3 or more. A red dot above a residue indicates a poor fit to the electron density ($RSRZ > 2$). Stretches of 2 or more consecutive residues without any outlier are shown as a green connector. Residues present in the sample, but not in the model, are shown in grey.

- Molecule 1: Myosin-2 heavy chain, Myosin-2 heavy chain



4 Data and refinement statistics i

Property	Value	Source
Space group	C 2 2 21	Depositor
Cell constants a, b, c, α , β , γ	89.19Å 149.03Å 153.93Å 90.00° 90.00° 90.00°	Depositor
Resolution (Å)	44.59 – 2.55 44.59 – 2.55	Depositor EDS
% Data completeness (in resolution range)	99.6 (44.59-2.55) 99.6 (44.59-2.55)	Depositor EDS
R_{merge}	(Not available)	Depositor
R_{sym}	(Not available)	Depositor
$\langle I/\sigma(I) \rangle$ ¹	2.27 (at 2.54Å)	Xtrriage
Refinement program	PHENIX 1.18.2_3874	Depositor
R, R_{free}	0.206 , 0.252 0.210 , 0.256	Depositor DCC
R_{free} test set	1675 reflections (4.98%)	wwPDB-VP
Wilson B-factor (Å ²)	40.2	Xtrriage
Anisotropy	0.860	Xtrriage
Bulk solvent k_{sol} (e/Å ³), B_{sol} (Å ²)	0.40 , 52.3	EDS
L-test for twinning ²	$\langle L \rangle = 0.50$, $\langle L^2 \rangle = 0.33$	Xtrriage
Estimated twinning fraction	0.003 for 1/2*h-1/2*k,-3/2*h-1/2*k,-l 0.022 for 1/2*h+1/2*k,3/2*h-1/2*k,-l	Xtrriage
F_o, F_c correlation	0.94	EDS
Total number of atoms	11930	wwPDB-VP
Average B, all atoms (Å ²)	60.0	wwPDB-VP

Xtrriage's analysis on translational NCS is as follows: *The largest off-origin peak in the Patterson function is 4.02% of the height of the origin peak. No significant pseudotranslation is detected.*

¹Intensities estimated from amplitudes.

²Theoretical values of $\langle |L| \rangle$, $\langle L^2 \rangle$ for acentric reflections are 0.5, 0.333 respectively for untwinned datasets, and 0.375, 0.2 for perfectly twinned datasets.

5 Model quality [i](#)

5.1 Standard geometry [i](#)

Bond lengths and bond angles in the following residue types are not validated in this section: MLI, PEG, GOL, MG, AD9, GLC

The Z score for a bond length (or angle) is the number of standard deviations the observed value is removed from the expected value. A bond length (or angle) with $|Z| > 5$ is considered an outlier worth inspection. RMSZ is the root-mean-square of all Z scores of the bond lengths (or angles).

Mol	Chain	Bond lengths		Bond angles	
		RMSZ	# Z >5	RMSZ	# Z >5
1	A	0.35	0/6020	0.54	0/8137

There are no bond length outliers.

There are no bond angle outliers.

There are no chirality outliers.

There are no planarity outliers.

5.2 Too-close contacts [i](#)

In the following table, the Non-H and H(model) columns list the number of non-hydrogen atoms and hydrogen atoms in the chain respectively. The H(added) column lists the number of hydrogen atoms added and optimized by MolProbity. The Clashes column lists the number of clashes within the asymmetric unit, whereas Symm-Clashes lists symmetry-related clashes.

Mol	Chain	Non-H	H(model)	H(added)	Clashes	Symm-Clashes
1	A	5906	5697	5740	50	0
2	A	31	14	12	1	0
3	A	1	0	0	0	0
4	A	36	48	48	0	0
5	A	12	12	12	4	0
6	A	35	10	10	0	0
7	A	14	20	20	3	0
8	A	94	0	0	0	0
All	All	6129	5801	5842	55	0

The all-atom clashscore is defined as the number of clashes found per 1000 atoms (including hydrogen atoms). The all-atom clashscore for this structure is 5.

All (55) close contacts within the same asymmetric unit are listed below, sorted by their clash

magnitude.

Atom-1	Atom-2	Interatomic distance (Å)	Clash overlap (Å)
2:A:801:AD9:O4'	2:A:801:AD9:C1'	1.64	1.23
1:A:4:ILE:CD1	1:A:146:ARG:NH1	2.04	1.19
1:A:4:ILE:CD1	1:A:146:ARG:HH12	1.53	1.19
1:A:4:ILE:HD12	1:A:146:ARG:HH12	1.10	1.12
1:A:4:ILE:HD11	1:A:146:ARG:NH1	1.71	1.01
1:A:4:ILE:HD12	1:A:146:ARG:NH1	1.77	0.87
1:A:6:ASP:O	1:A:9:SER:OG	2.06	0.72
1:A:745:ILE:HG23	1:A:745:ILE:O	1.89	0.71
1:A:6:ASP:OD1	1:A:8:THR:OG1	2.08	0.69
5:A:805:GLC:H2	5:A:805:GLC:H62	1.75	0.68
1:A:4:ILE:CD1	1:A:146:ARG:HH11	2.03	0.66
1:A:325:LYS:O	1:A:329:GLN:HG3	1.98	0.64
1:A:81:ASN:ND2	1:A:94:LEU:HD22	2.15	0.60
1:A:195:TYR:CZ	1:A:199:VAL:HG21	2.40	0.57
1:A:351:ILE:HG23	1:A:422:VAL:HG13	1.88	0.56
1:A:696:ARG:O	1:A:697:ILE:HD13	2.06	0.55
1:A:53:VAL:HG11	1:A:63:LYS:HG3	1.88	0.55
1:A:477:LYS:HD3	1:A:638:LEU:HD21	1.88	0.55
1:A:24:LEU:HA	1:A:27:LEU:HD12	1.89	0.55
1:A:606:ASN:HA	1:A:609:THR:HG22	1.89	0.55
1:A:262:LEU:HD11	1:A:470:CYS:HB3	1.92	0.52
1:A:723:ALA:O	1:A:726:ALA:HB3	2.11	0.51
1:A:284:LEU:HD12	1:A:324:PHE:CZ	2.46	0.51
1:A:94:LEU:O	1:A:690:ARG:NH2	2.44	0.50
1:A:285:LEU:HD23	1:A:298:LEU:HD13	1.94	0.50
1:A:176:LEU:HD21	1:A:645:LEU:HD22	1.94	0.49
1:A:263:LEU:H	7:A:809:PEG:H11	1.78	0.48
1:A:492:GLU:HA	1:A:495:LEU:HD12	1.95	0.48
1:A:736:GLU:O	1:A:736:GLU:OE1	2.31	0.48
1:A:262:LEU:CD2	7:A:816:PEG:C4	2.91	0.48
1:A:745:ILE:O	1:A:745:ILE:CG2	2.59	0.48
1:A:223:GLU:O	1:A:227:ASN:HB2	2.13	0.48
1:A:340:GLU:O	1:A:344:ILE:HG13	2.14	0.47
1:A:159:SER:OG	1:A:192:VAL:HG22	2.14	0.47
1:A:535:PHE:CD2	1:A:536:PRO:HD2	2.49	0.47
1:A:336:PHE:CE1	1:A:436:LYS:HG2	2.49	0.47
5:A:805:GLC:H2	5:A:805:GLC:C6	2.43	0.47
1:A:696:ARG:H	1:A:696:ARG:HD2	1.80	0.46
1:A:567:GLU:HA	1:A:579:TYR:O	2.15	0.46
1:A:160:ASP:O	1:A:164:ARG:HG2	2.16	0.46
1:A:756:GLU:O	1:A:760:GLU:N	2.48	0.46

Continued on next page...

Continued from previous page...

Atom-1	Atom-2	Interatomic distance (Å)	Clash overlap (Å)
1:A:285:LEU:HD21	1:A:298:LEU:HD22	1.98	0.45
1:A:724:THR:HA	1:A:727:VAL:HB	1.98	0.44
1:A:63:LYS:CE	1:A:69:ASP:OD1	2.66	0.44
5:A:805:GLC:C6	5:A:805:GLC:C2	2.96	0.43
5:A:805:GLC:H62	5:A:805:GLC:C2	2.47	0.43
1:A:487:PHE:O	1:A:491:GLN:HG3	2.18	0.43
1:A:658:ILE:HG22	1:A:676:GLN:NE2	2.33	0.43
1:A:241:LYS:HE3	1:A:454:ASP:OD2	2.19	0.42
1:A:185:LYS:HB2	1:A:185:LYS:HE2	1.83	0.42
1:A:262:LEU:CD2	7:A:816:PEG:H42	2.50	0.41
1:A:63:LYS:HE2	1:A:69:ASP:OD1	2.21	0.41
1:A:92:SER:OG	1:A:120:GLY:HA2	2.21	0.40
1:A:304:PHE:CD2	1:A:352:LEU:HB3	2.57	0.40
1:A:163:TYR:HA	1:A:450:ILE:HD11	2.02	0.40

There are no symmetry-related clashes.

5.3 Torsion angles [i](#)

5.3.1 Protein backbone [i](#)

In the following table, the Percentiles column shows the percent Ramachandran outliers of the chain as a percentile score with respect to all X-ray entries followed by that with respect to entries of similar resolution.

The Analysed column shows the number of residues for which the backbone conformation was analysed, and the total number of residues.

Mol	Chain	Analysed	Favoured	Allowed	Outliers	Percentiles
1	A	744/789 (94%)	733 (98%)	11 (2%)	0	100 100

There are no Ramachandran outliers to report.

5.3.2 Protein sidechains [i](#)

In the following table, the Percentiles column shows the percent sidechain outliers of the chain as a percentile score with respect to all X-ray entries followed by that with respect to entries of similar resolution.

The Analysed column shows the number of residues for which the sidechain conformation was analysed, and the total number of residues.

Mol	Chain	Analysed	Rotameric	Outliers	Percentiles
1	A	625/689 (91%)	618 (99%)	7 (1%)	73 83

All (7) residues with a non-rotameric sidechain are listed below:

Mol	Chain	Res	Type
1	A	12	HIS
1	A	31	ASP
1	A	198	SER
1	A	232	ARG
1	A	249	SER
1	A	546	LYS
1	A	696	ARG

Sometimes sidechains can be flipped to improve hydrogen bonding and reduce clashes. All (2) such sidechains are listed below:

Mol	Chain	Res	Type
1	A	309	GLN
1	A	500	ASN

5.3.3 RNA [i](#)

There are no RNA molecules in this entry.

5.4 Non-standard residues in protein, DNA, RNA chains [i](#)

There are no non-standard protein/DNA/RNA residues in this entry.

5.5 Carbohydrates [i](#)

There are no monosaccharides in this entry.

5.6 Ligand geometry [i](#)

Of 16 ligands modelled in this entry, 1 is monoatomic - leaving 15 for Mogul analysis.

In the following table, the Counts columns list the number of bonds (or angles) for which Mogul statistics could be retrieved, the number of bonds (or angles) that are observed in the model and the number of bonds (or angles) that are defined in the Chemical Component Dictionary. The Link column lists molecule types, if any, to which the group is linked. The Z score for a bond length (or angle) is the number of standard deviations the observed value is removed from the

expected value. A bond length (or angle) with $|Z| > 2$ is considered an outlier worth inspection. RMSZ is the root-mean-square of all Z scores of the bond lengths (or angles).

Mol	Type	Chain	Res	Link	Bond lengths			Bond angles		
					Counts	RMSZ	# $ Z > 2$	Counts	RMSZ	# $ Z > 2$
6	MLI	A	806	-	6,6,6	1.53	0	7,7,7	1.47	1 (14%)
6	MLI	A	813	-	6,6,6	1.42	0	7,7,7	1.34	1 (14%)
5	GLC	A	805	-	12,12,12	0.55	0	17,17,17	1.09	1 (5%)
4	GOL	A	804	-	5,5,5	1.31	0	5,5,5	1.26	1 (20%)
6	MLI	A	810	-	6,6,6	1.40	0	7,7,7	1.32	1 (14%)
4	GOL	A	807	-	5,5,5	1.02	0	5,5,5	1.18	1 (20%)
7	PEG	A	809	-	6,6,6	0.51	0	5,5,5	0.23	0
4	GOL	A	812	-	5,5,5	0.67	0	5,5,5	1.04	1 (20%)
6	MLI	A	808	-	6,6,6	1.45	0	7,7,7	1.13	0
6	MLI	A	814	-	6,6,6	1.45	0	7,7,7	1.17	0
2	AD9	A	801	3,8	25,33,33	4.48	11 (44%)	28,52,52	1.61	5 (17%)
4	GOL	A	811	-	5,5,5	1.13	1 (20%)	5,5,5	1.54	1 (20%)
7	PEG	A	816	-	6,6,6	0.50	0	5,5,5	0.23	0
4	GOL	A	803	-	5,5,5	1.15	0	5,5,5	1.48	1 (20%)
4	GOL	A	815	-	5,5,5	0.95	0	5,5,5	1.26	1 (20%)

In the following table, the Chirals column lists the number of chiral outliers, the number of chiral centers analysed, the number of these observed in the model and the number defined in the Chemical Component Dictionary. Similar counts are reported in the Torsion and Rings columns. '-' means no outliers of that kind were identified.

Mol	Type	Chain	Res	Link	Chirals	Torsions	Rings
6	MLI	A	806	-	-	2/4/4/4	-
6	MLI	A	813	-	-	1/4/4/4	-
5	GLC	A	805	-	-	1/2/22/22	0/1/1/1
4	GOL	A	804	-	-	0/4/4/4	-
6	MLI	A	810	-	-	2/4/4/4	-
4	GOL	A	807	-	-	2/4/4/4	-
7	PEG	A	809	-	-	3/4/4/4	-
4	GOL	A	812	-	-	0/4/4/4	-
6	MLI	A	808	-	-	4/4/4/4	-
6	MLI	A	814	-	-	2/4/4/4	-
2	AD9	A	801	3,8	-	0/12/38/38	0/3/3/3
4	GOL	A	811	-	-	3/4/4/4	-
7	PEG	A	816	-	-	0/4/4/4	-

Continued on next page...

Continued from previous page...

Mol	Type	Chain	Res	Link	Chirals	Torsions	Rings
4	GOL	A	803	-	-	2/4/4/4	-
4	GOL	A	815	-	-	2/4/4/4	-

All (12) bond length outliers are listed below:

Mol	Chain	Res	Type	Atoms	Z	Observed(Å)	Ideal(Å)
2	A	801	AD9	O4'-C1'	18.02	1.64	1.40
2	A	801	AD9	O4'-C4'	-7.39	1.28	1.45
2	A	801	AD9	O3'-C3'	-4.95	1.30	1.43
2	A	801	AD9	O3B-VG	4.93	2.02	1.80
2	A	801	AD9	C6-N6	3.72	1.47	1.34
2	A	801	AD9	PB-O2B	-2.48	1.43	1.55
2	A	801	AD9	C8-N7	-2.40	1.30	1.34
2	A	801	AD9	C5-N7	-2.39	1.31	1.39
2	A	801	AD9	C1'-N9	-2.25	1.44	1.49
2	A	801	AD9	PB-O1B	-2.09	1.43	1.50
2	A	801	AD9	C2-N3	-2.02	1.29	1.32
4	A	811	GOL	O2-C2	-2.02	1.37	1.43

All (15) bond angle outliers are listed below:

Mol	Chain	Res	Type	Atoms	Z	Observed(°)	Ideal(°)
2	A	801	AD9	N3-C2-N1	-5.67	120.98	128.67
4	A	811	GOL	C3-C2-C1	-2.99	100.82	111.80
4	A	803	GOL	C3-C2-C1	-2.86	101.29	111.80
4	A	815	GOL	C3-C2-C1	-2.50	102.63	111.80
2	A	801	AD9	O2B-PB-O3A	2.35	113.64	107.27
2	A	801	AD9	O2A-PA-O3A	2.34	113.61	107.27
4	A	804	GOL	C3-C2-C1	-2.29	103.40	111.80
4	A	807	GOL	C3-C2-C1	-2.22	103.65	111.80
2	A	801	AD9	O3B-PB-O1B	2.18	118.61	110.86
6	A	806	MLI	O7-C2-C1	2.13	121.11	114.51
2	A	801	AD9	C4-C5-N7	-2.10	107.12	109.34
6	A	810	MLI	O7-C2-C1	2.05	120.87	114.51
4	A	812	GOL	C3-C2-C1	-2.03	104.37	111.80
6	A	813	MLI	O9-C3-C1	2.01	120.74	114.51
5	A	805	GLC	O5-C5-C4	2.00	113.31	109.70

There are no chirality outliers.

All (24) torsion outliers are listed below:

Mol	Chain	Res	Type	Atoms
4	A	803	GOL	C1-C2-C3-O3
4	A	807	GOL	C1-C2-C3-O3
4	A	815	GOL	C1-C2-C3-O3
4	A	811	GOL	O1-C1-C2-C3
7	A	809	PEG	O2-C3-C4-O4
5	A	805	GLC	O5-C5-C6-O6
4	A	803	GOL	O2-C2-C3-O3
4	A	811	GOL	O1-C1-C2-O2
4	A	807	GOL	O2-C2-C3-O3
4	A	815	GOL	O2-C2-C3-O3
7	A	809	PEG	O1-C1-C2-O2
6	A	810	MLI	C3-C1-C2-O6
7	A	809	PEG	C4-C3-O2-C2
6	A	810	MLI	C3-C1-C2-O7
6	A	806	MLI	C2-C1-C3-O8
6	A	808	MLI	C3-C1-C2-O7
6	A	806	MLI	C2-C1-C3-O9
6	A	808	MLI	C2-C1-C3-O9
6	A	808	MLI	C2-C1-C3-O8
4	A	811	GOL	C1-C2-C3-O3
6	A	808	MLI	C3-C1-C2-O6
6	A	814	MLI	C2-C1-C3-O8
6	A	814	MLI	C2-C1-C3-O9
6	A	813	MLI	C3-C1-C2-O6

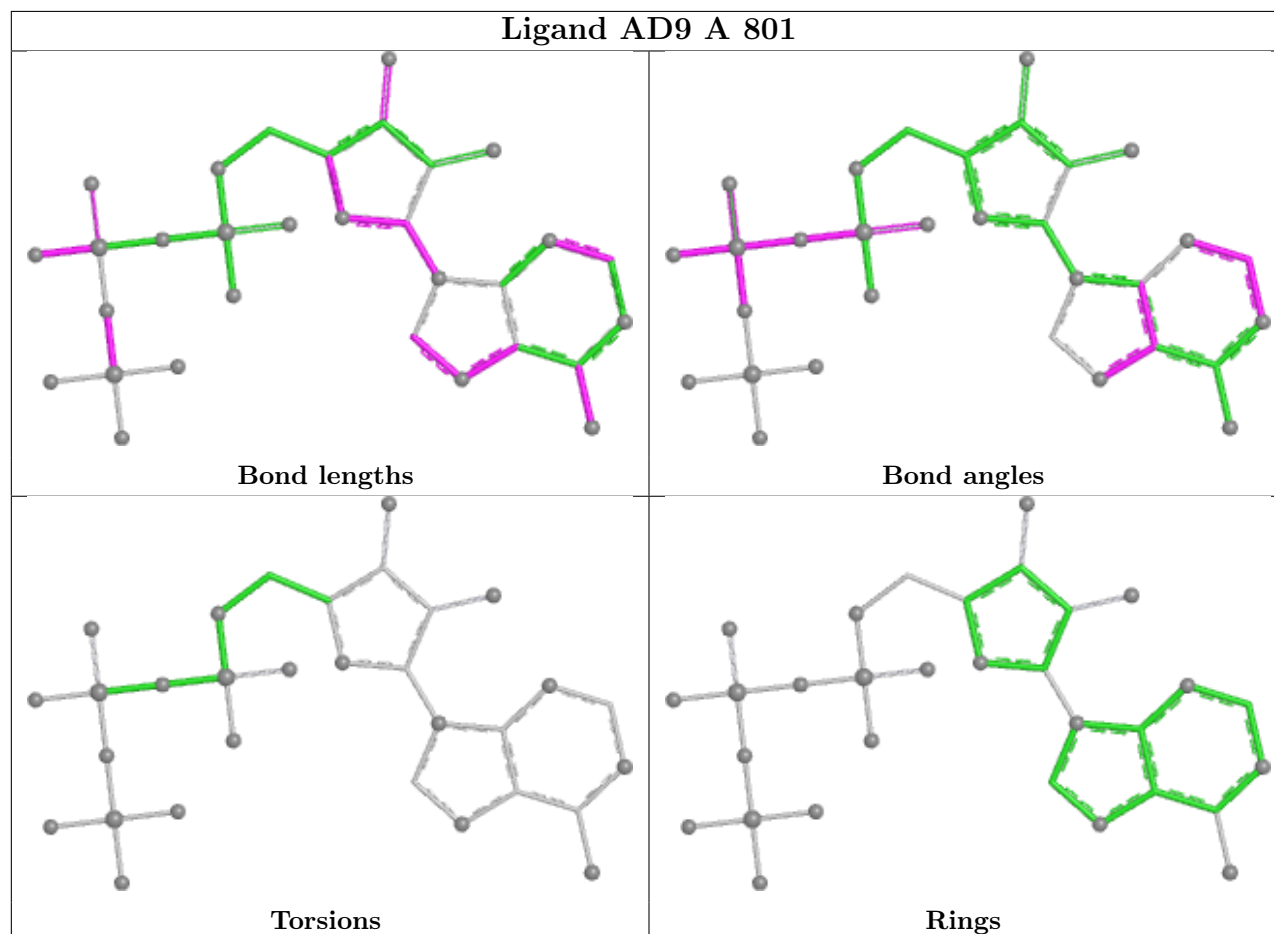
There are no ring outliers.

4 monomers are involved in 8 short contacts:

Mol	Chain	Res	Type	Clashes	Symm-Clashes
5	A	805	GLC	4	0
7	A	809	PEG	1	0
2	A	801	AD9	1	0
7	A	816	PEG	2	0

The following is a two-dimensional graphical depiction of Mogul quality analysis of bond lengths, bond angles, torsion angles, and ring geometry for all instances of the Ligand of Interest. In addition, ligands with molecular weight > 250 and outliers as shown on the validation Tables will also be included. For torsion angles, if less than 5% of the Mogul distribution of torsion angles is within 10 degrees of the torsion angle in question, then that torsion angle is considered an outlier. Any bond that is central to one or more torsion angles identified as an outlier by Mogul will be highlighted in the graph. For rings, the root-mean-square deviation (RMSD) between the ring in question and similar rings identified by Mogul is calculated over all ring torsion angles. If the average RMSD is greater than 60 degrees and the minimal RMSD between the ring in question and

any Mogul-identified rings is also greater than 60 degrees, then that ring is considered an outlier. The outliers are highlighted in purple. The color gray indicates Mogul did not find sufficient equivalents in the CSD to analyse the geometry.



5.7 Other polymers [i](#)

There are no such residues in this entry.

5.8 Polymer linkage issues [i](#)

There are no chain breaks in this entry.

6 Fit of model and data

6.1 Protein, DNA and RNA chains

In the following table, the column labelled ‘#RSRZ > 2’ contains the number (and percentage) of RSRZ outliers, followed by percent RSRZ outliers for the chain as percentile scores relative to all X-ray entries and entries of similar resolution. The OWAB column contains the minimum, median, 95th percentile and maximum values of the occupancy-weighted average B-factor per residue. The column labelled ‘Q < 0.9’ lists the number of (and percentage) of residues with an average occupancy less than 0.9.

Mol	Chain	Analysed	<RSRZ>	#RSRZ>2	OWAB(Å ²)	Q<0.9
1	A	750/789 (95%)	0.61	62 (8%) 11 13	32, 50, 117, 282	0

All (62) RSRZ outliers are listed below:

Mol	Chain	Res	Type	RSRZ
1	A	730	HIS	9.1
1	A	753	ALA	9.0
1	A	758	ALA	8.9
1	A	702	PHE	7.6
1	A	726	ALA	7.5
1	A	728	LEU	7.0
1	A	699	TYR	6.6
1	A	752	LEU	6.6
1	A	756	GLU	6.2
1	A	703	VAL	6.0
1	A	713	VAL	6.0
1	A	745	ILE	5.9
1	A	714	PRO	5.8
1	A	733	ILE	5.8
1	A	697	ILE	5.7
1	A	729	LYS	5.6
1	A	761	GLN	5.6
1	A	732	ASN	5.3
1	A	720	SER	5.1
1	A	742	ILE	5.1
1	A	724	THR	5.0
1	A	760	GLU	5.0
1	A	712	ASN	4.8
1	A	757	GLU	4.7
1	A	719	ASP	4.7
1	A	747	PHE	4.7
1	A	759	ARG	4.6

Continued on next page...

Continued from previous page...

Mol	Chain	Res	Type	RSRZ
1	A	701	ASP	4.6
1	A	715	ARG	4.4
1	A	755	ILE	4.2
1	A	735	PRO	4.2
1	A	706	TYR	3.9
1	A	727	VAL	3.9
1	A	754	ARG	3.8
1	A	723	ALA	3.7
1	A	696	ARG	3.7
1	A	717	ALA	3.6
1	A	750	GLY	3.5
1	A	722	LYS	3.5
1	A	738	TYR	3.5
1	A	721	GLN	3.2
1	A	725	ASP	3.2
1	A	740	PHE	3.2
1	A	704	LYS	3.2
1	A	762	ARG	3.1
1	A	731	LEU	3.0
1	A	718	GLU	2.9
1	A	700	ALA	2.9
1	A	746	PHE	2.9
1	A	716	ASP	2.9
1	A	41	PRO	2.7
1	A	67	GLY	2.7
1	A	744	LYS	2.5
1	A	698	ILE	2.5
1	A	751	GLN	2.5
1	A	149	ASN	2.5
1	A	705	ARG	2.3
1	A	743	THR	2.3
1	A	147	ARG	2.2
1	A	42	LYS	2.0
1	A	739	ARG	2.0
1	A	695	ASN	2.0

6.2 Non-standard residues in protein, DNA, RNA chains [i](#)

There are no non-standard protein/DNA/RNA residues in this entry.

6.3 Carbohydrates [i](#)

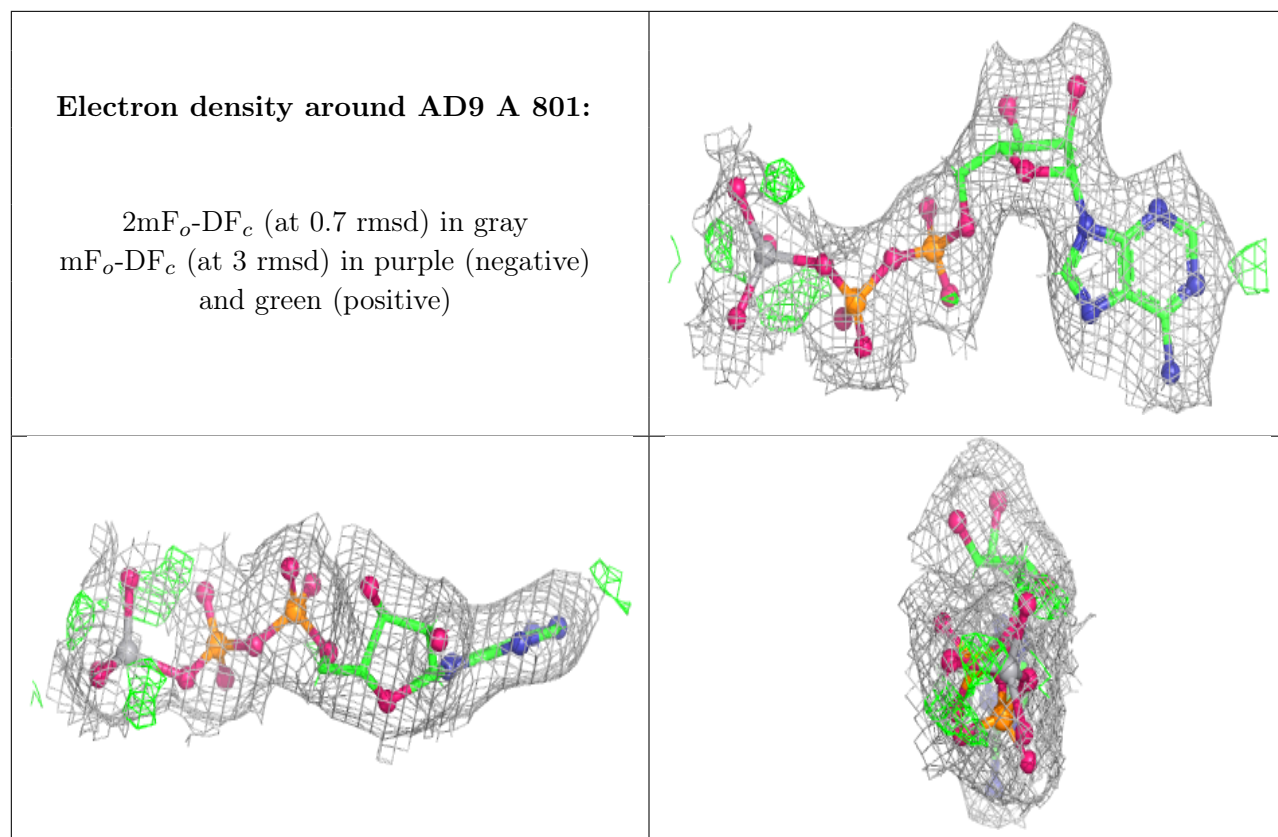
There are no monosaccharides in this entry.

6.4 Ligands [i](#)

In the following table, the Atoms column lists the number of modelled atoms in the group and the number defined in the chemical component dictionary. The B-factors column lists the minimum, median, 95th percentile and maximum values of B factors of atoms in the group. The column labelled 'Q< 0.9' lists the number of atoms with occupancy less than 0.9.

Mol	Type	Chain	Res	Atoms	RSCC	RSR	B-factors(Å ²)	Q<0.9
4	GOL	A	807	6/6	0.69	0.16	67,92,110,111	0
7	PEG	A	816	7/7	0.74	0.31	63,116,150,150	0
5	GLC	A	805	12/12	0.76	0.24	90,103,121,123	0
6	MLI	A	810	7/7	0.77	0.32	69,74,97,97	0
6	MLI	A	808	7/7	0.78	0.26	51,60,70,70	0
4	GOL	A	815	6/6	0.78	0.22	66,83,96,102	0
4	GOL	A	803	6/6	0.78	0.15	55,72,81,87	0
6	MLI	A	814	7/7	0.81	0.19	58,70,79,80	0
4	GOL	A	804	6/6	0.81	0.37	48,62,80,80	0
6	MLI	A	806	7/7	0.83	0.42	59,80,83,86	0
7	PEG	A	809	7/7	0.85	0.23	51,63,77,78	0
6	MLI	A	813	7/7	0.86	0.29	71,81,97,99	0
4	GOL	A	811	6/6	0.89	0.21	52,70,76,87	0
4	GOL	A	812	6/6	0.90	0.26	50,61,80,80	0
2	AD9	A	801	31/31	0.97	0.18	25,44,56,63	0
3	MG	A	802	1/1	0.99	0.29	39,39,39,39	0

The following is a graphical depiction of the model fit to experimental electron density of all instances of the Ligand of Interest. In addition, ligands with molecular weight > 250 and outliers as shown on the geometry validation Tables will also be included. Each fit is shown from different orientation to approximate a three-dimensional view.



6.5 Other polymers [i](#)

There are no such residues in this entry.