



Full wwPDB X-ray Structure Validation Report ⓘ

Mar 8, 2018 – 11:16 pm GMT

PDB ID : 5A2X
Title : Crystal structure of mtPAP in complex with CTP
Authors : Lapkouski, M.; Hallberg, B.M.
Deposited on : 2015-05-26
Resolution : 3.10 Å(reported)

This is a Full wwPDB X-ray Structure Validation Report for a publicly released PDB entry.

We welcome your comments at validation@mail.wwpdb.org

A user guide is available at

<https://www.wwpdb.org/validation/2017/XrayValidationReportHelp>

with specific help available everywhere you see the ⓘ symbol.

The following versions of software and data (see [references ⓘ](#)) were used in the production of this report:

MolProbity : 4.02b-467
Mogul : 1.7.3 (157068), CSD as539be (2018)
Xtriage (Phenix) : 1.13
EDS : trunk30967
Percentile statistics : 20171227.v01 (using entries in the PDB archive December 27th 2017)
Refmac : 5.8.0158
CCP4 : 7.0 (Gargrove)
Ideal geometry (proteins) : Engh & Huber (2001)
Ideal geometry (DNA, RNA) : Parkinson et al. (1996)
Validation Pipeline (wwPDB-VP) : trunk30967

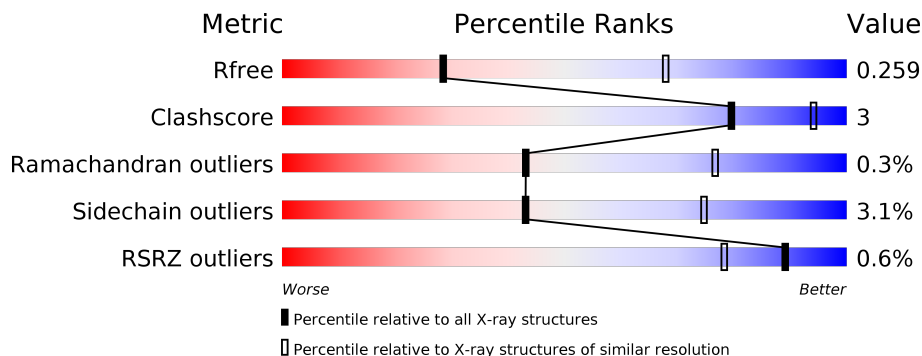
1 Overall quality at a glance

The following experimental techniques were used to determine the structure:

X-RAY DIFFRACTION

The reported resolution of this entry is 3.10 Å.

Percentile scores (ranging between 0-100) for global validation metrics of the entry are shown in the following graphic. The table shows the number of entries on which the scores are based.



Metric	Whole archive (#Entries)	Similar resolution (#Entries, resolution range(Å))
R_{free}	111664	1115 (3.12-3.08)
Clashscore	122126	1042 (3.10-3.10)
Ramachandran outliers	120053	1010 (3.10-3.10)
Sidechain outliers	120020	1010 (3.10-3.10)
RSRZ outliers	108989	1089 (3.12-3.08)

The table below summarises the geometric issues observed across the polymeric chains and their fit to the electron density. The red, orange, yellow and green segments on the lower bar indicate the fraction of residues that contain outliers for ≥ 3 , 2, 1 and 0 types of geometric quality criteria. A grey segment represents the fraction of residues that are not modelled. The numeric value for each fraction is indicated below the corresponding segment, with a dot representing fractions $\leq 5\%$. The upper red bar (where present) indicates the fraction of residues that have poor fit to the electron density. The numeric value is given above the bar.

Mol	Chain	Length	Quality of chain
1	A	555	 75% 8% 16%
1	B	555	 75% 8% 16%

2 Entry composition i

There are 4 unique types of molecules in this entry. The entry contains 7504 atoms, of which 0 are hydrogens and 0 are deuteriums.

In the tables below, the ZeroOcc column contains the number of atoms modelled with zero occupancy, the AltConf column contains the number of residues with at least one atom in alternate conformation and the Trace column contains the number of residues modelled with at most 2 atoms.

- Molecule 1 is a protein called MITOCHONDRIAL PROTEIN.

Mol	Chain	Residues	Atoms					ZeroOcc	AltConf	Trace
			Total	C	N	O	S			
1	A	468	3736	2400	625	690	21	0	0	0
1	B	467	3704	2381	619	683	21	0	0	0

There are 46 discrepancies between the modelled and reference sequences:

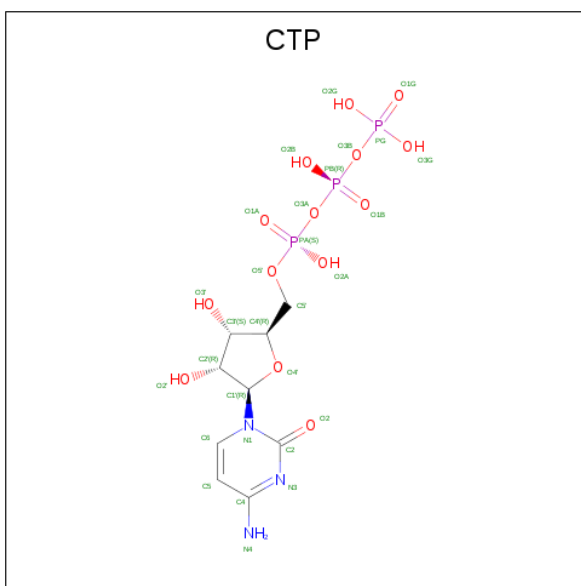
Chain	Residue	Modelled	Actual	Comment	Reference
A	14	MET	-	expression tag	UNP F1NBW0
A	15	HIS	-	expression tag	UNP F1NBW0
A	16	HIS	-	expression tag	UNP F1NBW0
A	17	HIS	-	expression tag	UNP F1NBW0
A	18	HIS	-	expression tag	UNP F1NBW0
A	19	HIS	-	expression tag	UNP F1NBW0
A	20	HIS	-	expression tag	UNP F1NBW0
A	21	SER	-	expression tag	UNP F1NBW0
A	22	SER	-	expression tag	UNP F1NBW0
A	23	GLY	-	expression tag	UNP F1NBW0
A	24	VAL	-	expression tag	UNP F1NBW0
A	25	ASP	-	expression tag	UNP F1NBW0
A	26	LEU	-	expression tag	UNP F1NBW0
A	27	GLY	-	expression tag	UNP F1NBW0
A	28	THR	-	expression tag	UNP F1NBW0
A	29	GLU	-	expression tag	UNP F1NBW0
A	30	ASN	-	expression tag	UNP F1NBW0
A	31	LEU	-	expression tag	UNP F1NBW0
A	32	TYR	-	expression tag	UNP F1NBW0
A	33	PHE	-	expression tag	UNP F1NBW0
A	34	GLN	-	expression tag	UNP F1NBW0
A	35	SER	-	expression tag	UNP F1NBW0
A	36	MET	-	expression tag	UNP F1NBW0
B	14	MET	-	expression tag	UNP F1NBW0
B	15	HIS	-	expression tag	UNP F1NBW0

Continued on next page...

Continued from previous page...

Chain	Residue	Modelled	Actual	Comment	Reference
B	16	HIS	-	expression tag	UNP F1NBW0
B	17	HIS	-	expression tag	UNP F1NBW0
B	18	HIS	-	expression tag	UNP F1NBW0
B	19	HIS	-	expression tag	UNP F1NBW0
B	20	HIS	-	expression tag	UNP F1NBW0
B	21	SER	-	expression tag	UNP F1NBW0
B	22	SER	-	expression tag	UNP F1NBW0
B	23	GLY	-	expression tag	UNP F1NBW0
B	24	VAL	-	expression tag	UNP F1NBW0
B	25	ASP	-	expression tag	UNP F1NBW0
B	26	LEU	-	expression tag	UNP F1NBW0
B	27	GLY	-	expression tag	UNP F1NBW0
B	28	THR	-	expression tag	UNP F1NBW0
B	29	GLU	-	expression tag	UNP F1NBW0
B	30	ASN	-	expression tag	UNP F1NBW0
B	31	LEU	-	expression tag	UNP F1NBW0
B	32	TYR	-	expression tag	UNP F1NBW0
B	33	PHE	-	expression tag	UNP F1NBW0
B	34	GLN	-	expression tag	UNP F1NBW0
B	35	SER	-	expression tag	UNP F1NBW0
B	36	MET	-	expression tag	UNP F1NBW0

- Molecule 2 is CYTIDINE-5'-TRIPHOSPHATE (three-letter code: CTP) (formula: $C_9H_{16}N_3O_{14}P_3$).



Mol	Chain	Residues	Atoms					ZeroOcc	AltConf
2	A	1	Total	C	N	O	P	0	0
			29	9	3	14	3		
2	B	1	Total	C	N	O	P	0	0
			29	9	3	14	3		

- Molecule 3 is MAGNESIUM ION (three-letter code: MG) (formula: Mg).

Mol	Chain	Residues	Atoms		ZeroOcc	AltConf
3	B	1	Total	Mg	0	0
			1	1		
3	A	1	Total	Mg	0	0
			1	1		

- Molecule 4 is water.

Mol	Chain	Residues	Atoms		ZeroOcc	AltConf
4	A	2	Total	O	0	0
			2	2		
4	B	2	Total	O	0	0
			2	2		

4 Data and refinement statistics

Property	Value	Source
Space group	P 21 21 21	Depositor
Cell constants a, b, c, α , β , γ	61.06Å 95.58Å 191.61Å 90.00° 90.00° 90.00°	Depositor
Resolution (Å)	38.29 – 3.10 38.26 – 3.10	Depositor EDS
% Data completeness (in resolution range)	99.8 (38.29-3.10) 99.9 (38.26-3.10)	Depositor EDS
R_{merge}	0.16	Depositor
R_{sym}	(Not available)	Depositor
$\langle I/\sigma(I) \rangle$ ¹	1.45 (at 3.12Å)	Xtrriage
Refinement program	REFMAC 5.7.0032	Depositor
R, R_{free}	0.212 , 0.260 0.219 , 0.259	Depositor DCC
R_{free} test set	1080 reflections (5.13%)	wwPDB-VP
Wilson B-factor (Å ²)	75.2	Xtrriage
Anisotropy	0.309	Xtrriage
Bulk solvent k_{sol} (e/Å ³), B_{sol} (Å ²)	0.32 , 57.5	EDS
L-test for twinning ²	$\langle L \rangle = 0.48$, $\langle L^2 \rangle = 0.32$	Xtrriage
Estimated twinning fraction	No twinning to report.	Xtrriage
F_o, F_c correlation	0.93	EDS
Total number of atoms	7504	wwPDB-VP
Average B, all atoms (Å ²)	78.0	wwPDB-VP

Xtrriage's analysis on translational NCS is as follows: *The largest off-origin peak in the Patterson function is 3.10% of the height of the origin peak. No significant pseudotranslation is detected.*

¹Intensities estimated from amplitudes.

²Theoretical values of $\langle |L| \rangle$, $\langle L^2 \rangle$ for acentric reflections are 0.5, 0.333 respectively for untwinned datasets, and 0.375, 0.2 for perfectly twinned datasets.

5 Model quality [i](#)

5.1 Standard geometry [i](#)

Bond lengths and bond angles in the following residue types are not validated in this section: MG, CTP

The Z score for a bond length (or angle) is the number of standard deviations the observed value is removed from the expected value. A bond length (or angle) with $|Z| > 5$ is considered an outlier worth inspection. RMSZ is the root-mean-square of all Z scores of the bond lengths (or angles).

Mol	Chain	Bond lengths		Bond angles	
		RMSZ	# Z >5	RMSZ	# Z >5
1	A	0.33	0/3825	0.62	8/5176 (0.2%)
1	B	0.36	0/3790	0.59	4/5129 (0.1%)
All	All	0.35	0/7615	0.61	12/10305 (0.1%)

There are no bond length outliers.

All (12) bond angle outliers are listed below:

Mol	Chain	Res	Type	Atoms	Z	Observed(°)	Ideal(°)
1	A	129	GLU	N-CA-C	14.41	149.91	111.00
1	B	476	GLN	N-CA-C	11.60	142.31	111.00
1	A	476	GLN	CB-CA-C	-8.08	94.23	110.40
1	B	477	ASP	N-CA-C	-7.84	89.83	111.00
1	A	476	GLN	N-CA-C	-7.40	91.02	111.00
1	A	129	GLU	CB-CA-C	-7.39	95.62	110.40
1	A	477	ASP	N-CA-CB	7.37	123.86	110.60
1	A	130	HIS	N-CA-CB	-6.73	98.48	110.60
1	B	155	ARG	C-N-CD	6.00	141.00	128.40
1	A	385	ARG	NE-CZ-NH1	5.81	123.20	120.30
1	B	514	ASN	CB-CA-C	5.66	121.71	110.40
1	A	385	ARG	NE-CZ-NH2	-5.40	117.60	120.30

There are no chirality outliers.

There are no planarity outliers.

5.2 Too-close contacts [i](#)

In the following table, the Non-H and H(model) columns list the number of non-hydrogen atoms and hydrogen atoms in the chain respectively. The H(added) column lists the number of hydrogen

atoms added and optimized by MolProbity. The Clashes column lists the number of clashes within the asymmetric unit, whereas Symm-Clashes lists symmetry related clashes.

Mol	Chain	Non-H	H(model)	H(added)	Clashes	Symm-Clashes
1	A	3736	0	3708	22	0
1	B	3704	0	3659	25	0
2	A	29	0	12	0	0
2	B	29	0	12	0	0
3	A	1	0	0	0	0
3	B	1	0	0	0	0
4	A	2	0	0	0	0
4	B	2	0	0	0	0
All	All	7504	0	7391	45	0

The all-atom clashscore is defined as the number of clashes found per 1000 atoms (including hydrogen atoms). The all-atom clashscore for this structure is 3.

All (45) close contacts within the same asymmetric unit are listed below, sorted by their clash magnitude.

Atom-1	Atom-2	Interatomic distance (Å)	Clash overlap (Å)
1:B:155:ARG:HG3	1:B:156:PRO:HD2	1.32	1.09
1:A:129:GLU:HG2	1:A:129:GLU:O	1.60	0.98
1:A:231:PHE:O	1:A:352:ARG:NH2	2.13	0.82
1:B:231:PHE:O	1:B:352:ARG:NH2	2.15	0.78
1:B:155:ARG:HG3	1:B:156:PRO:CD	2.13	0.74
1:B:155:ARG:CG	1:B:156:PRO:HD2	2.17	0.68
1:B:516:GLU:HG2	1:B:517:PRO:HD3	1.78	0.64
1:A:184:MET:HE1	1:A:435:LEU:HB2	1.90	0.53
1:B:509:THR:O	1:B:513:ILE:HD13	2.10	0.51
1:B:243:ASP:OD1	1:B:244:PHE:N	2.44	0.50
1:B:393:LEU:HB3	1:B:455:ARG:HA	1.95	0.48
1:A:393:LEU:HB3	1:A:455:ARG:HA	1.96	0.48
1:B:469:TYR:CE2	1:B:479:ASN:HB2	2.49	0.47
1:A:469:TYR:CE2	1:A:479:ASN:HB2	2.50	0.47
1:A:401:ASP:OD1	1:A:403:LYS:HB2	2.15	0.46
1:B:325:SER:O	1:B:329:ARG:HG2	2.14	0.46
1:B:486:GLN:HB3	1:B:487:PRO:HD3	1.97	0.46
1:B:516:GLU:HG2	1:B:517:PRO:CD	2.44	0.46
1:A:142:PHE:CZ	1:B:261:MET:HG2	2.51	0.46
1:B:155:ARG:CG	1:B:156:PRO:CD	2.85	0.46
1:A:486:GLN:HB3	1:A:487:PRO:HD3	1.98	0.46
1:A:70:LEU:HB2	1:A:139:LEU:HD23	1.99	0.45
1:B:241:PHE:CZ	1:B:324:ASN:HB3	2.51	0.45

Continued on next page...

Continued from previous page...

Atom-1	Atom-2	Interatomic distance (Å)	Clash overlap (Å)
1:A:325:SER:O	1:A:329:ARG:HG2	2.17	0.45
1:A:241:PHE:CZ	1:A:324:ASN:HB3	2.53	0.44
1:B:209:ARG:O	1:B:213:ARG:HG3	2.17	0.44
1:A:180:ILE:HG22	1:A:184:MET:CE	2.48	0.44
1:B:312:GLN:N	1:B:313:PRO:CD	2.82	0.43
1:B:514:ASN:O	1:B:515:LYS:HB2	2.18	0.43
1:A:184:MET:HE2	1:A:435:LEU:HD22	2.00	0.42
1:B:70:LEU:HB2	1:B:139:LEU:HD23	2.02	0.42
1:B:337:TYR:CE1	1:B:390:ILE:HD12	2.54	0.42
1:A:337:TYR:CE1	1:A:390:ILE:HD12	2.55	0.42
1:A:416:VAL:HG12	1:A:417:SER:N	2.35	0.42
1:B:171:ILE:HB	1:B:172:PRO:HD3	2.01	0.42
1:A:171:ILE:HB	1:A:172:PRO:HD3	2.02	0.42
1:B:77:LEU:HD23	1:B:157:VAL:HG21	2.02	0.42
1:A:136:LYS:HE3	1:B:218:ASP:OD2	2.19	0.41
1:A:180:ILE:HG22	1:A:184:MET:HE3	2.02	0.41
1:A:209:ARG:O	1:A:212:ALA:N	2.53	0.41
1:A:312:GLN:N	1:A:313:PRO:CD	2.83	0.41
1:A:442:PHE:HA	1:A:445:PHE:HB2	2.03	0.41
1:A:106:LEU:HD23	1:A:106:LEU:C	2.41	0.41
1:B:106:LEU:C	1:B:106:LEU:HD23	2.41	0.41
1:B:218:ASP:HB3	1:B:245:HIS:O	2.21	0.40

There are no symmetry-related clashes.

5.3 Torsion angles [i](#)

5.3.1 Protein backbone [i](#)

In the following table, the Percentiles column shows the percent Ramachandran outliers of the chain as a percentile score with respect to all X-ray entries followed by that with respect to entries of similar resolution.

The Analysed column shows the number of residues for which the backbone conformation was analysed, and the total number of residues.

Mol	Chain	Analysed	Favoured	Allowed	Outliers	Percentiles	
1	A	464/555 (84%)	442 (95%)	19 (4%)	3 (1%)	27	64
1	B	459/555 (83%)	441 (96%)	18 (4%)	0	100	100
All	All	923/1110 (83%)	883 (96%)	37 (4%)	3 (0%)	43	77

All (3) Ramachandran outliers are listed below:

Mol	Chain	Res	Type
1	A	129	GLU
1	A	125	PRO
1	A	269	PRO

5.3.2 Protein sidechains [i](#)

In the following table, the Percentiles column shows the percent sidechain outliers of the chain as a percentile score with respect to all X-ray entries followed by that with respect to entries of similar resolution.

The Analysed column shows the number of residues for which the sidechain conformation was analysed, and the total number of residues.

Mol	Chain	Analysed	Rotameric	Outliers	Percentiles	
1	A	418/497 (84%)	407 (97%)	11 (3%)	49	78
1	B	412/497 (83%)	397 (96%)	15 (4%)	38	72
All	All	830/994 (84%)	804 (97%)	26 (3%)	43	75

All (26) residues with a non-rotameric sidechain are listed below:

Mol	Chain	Res	Type
1	A	55	THR
1	A	58	GLN
1	A	181	SER
1	A	246	ASP
1	A	269	PRO
1	A	303	ARG
1	A	310	SER
1	A	352	ARG
1	A	420	SER
1	A	423	LYS
1	A	428	THR
1	B	55	THR
1	B	58	GLN
1	B	150	GLN
1	B	181	SER
1	B	256	LYS
1	B	267	ARG
1	B	310	SER
1	B	317	GLN
1	B	352	ARG

Continued on next page...

Continued from previous page...

Mol	Chain	Res	Type
1	B	384	LYS
1	B	420	SER
1	B	428	THR
1	B	509	THR
1	B	510	GLN
1	B	516	GLU

Some sidechains can be flipped to improve hydrogen bonding and reduce clashes. There are no such sidechains identified.

5.3.3 RNA [i](#)

There are no RNA molecules in this entry.

5.4 Non-standard residues in protein, DNA, RNA chains [i](#)

There are no non-standard protein/DNA/RNA residues in this entry.

5.5 Carbohydrates [i](#)

There are no carbohydrates in this entry.

5.6 Ligand geometry [i](#)

Of 4 ligands modelled in this entry, 2 are monoatomic - leaving 2 for Mogul analysis.

In the following table, the Counts columns list the number of bonds (or angles) for which Mogul statistics could be retrieved, the number of bonds (or angles) that are observed in the model and the number of bonds (or angles) that are defined in the Chemical Component Dictionary. The Link column lists molecule types, if any, to which the group is linked. The Z score for a bond length (or angle) is the number of standard deviations the observed value is removed from the expected value. A bond length (or angle) with $|Z| > 2$ is considered an outlier worth inspection. RMSZ is the root-mean-square of all Z scores of the bond lengths (or angles).

Mol	Type	Chain	Res	Link	Bond lengths			Bond angles		
					Counts	RMSZ	$\# Z > 2$	Counts	RMSZ	$\# Z > 2$
2	CTP	A	1528	3	23,30,30	0.75	0	26,47,47	1.22	2 (7%)
2	CTP	B	1529	3	23,30,30	0.71	0	26,47,47	1.23	3 (11%)

In the following table, the Chirals column lists the number of chiral outliers, the number of chiral

centers analysed, the number of these observed in the model and the number defined in the Chemical Component Dictionary. Similar counts are reported in the Torsion and Rings columns. '-' means no outliers of that kind were identified.

Mol	Type	Chain	Res	Link	Chirals	Torsions	Rings
2	CTP	A	1528	3	-	0/18/38/38	0/2/2/2
2	CTP	B	1529	3	-	0/18/38/38	0/2/2/2

There are no bond length outliers.

All (5) bond angle outliers are listed below:

Mol	Chain	Res	Type	Atoms	Z	Observed(°)	Ideal(°)
2	A	1528	CTP	PB-O3A-PA	-3.30	121.54	132.63
2	B	1529	CTP	PB-O3A-PA	-2.83	123.11	132.63
2	B	1529	CTP	N4-C4-N3	2.04	119.89	116.56
2	A	1528	CTP	N4-C4-N3	2.20	120.15	116.56
2	B	1529	CTP	O4'-C1'-N1	2.59	113.19	108.05

There are no chirality outliers.

There are no torsion outliers.

There are no ring outliers.

No monomer is involved in short contacts.

5.7 Other polymers [i](#)

There are no such residues in this entry.

5.8 Polymer linkage issues [i](#)

There are no chain breaks in this entry.

6 Fit of model and data [i](#)

6.1 Protein, DNA and RNA chains [i](#)

In the following table, the column labelled '#RSRZ > 2' contains the number (and percentage) of RSRZ outliers, followed by percent RSRZ outliers for the chain as percentile scores relative to all X-ray entries and entries of similar resolution. The OWAB column contains the minimum, median, 95th percentile and maximum values of the occupancy-weighted average B-factor per residue. The column labelled 'Q < 0.9' lists the number of (and percentage) of residues with an average occupancy less than 0.9.

Mol	Chain	Analysed	<RSRZ>	#RSRZ>2	OWAB(Å ²)	Q<0.9
1	A	468/555 (84%)	-0.24	5 (1%) 80 64	50, 76, 115, 141	0
1	B	467/555 (84%)	-0.18	1 (0%) 94 90	48, 74, 110, 129	0
All	All	935/1110 (84%)	-0.21	6 (0%) 89 78	48, 75, 113, 141	0

All (6) RSRZ outliers are listed below:

Mol	Chain	Res	Type	RSRZ
1	A	421	LYS	3.6
1	A	51	LYS	3.1
1	A	410	GLY	3.0
1	A	411	TYR	2.5
1	A	419	LEU	2.5
1	B	254	MET	2.2

6.2 Non-standard residues in protein, DNA, RNA chains [i](#)

There are no non-standard protein/DNA/RNA residues in this entry.

6.3 Carbohydrates [i](#)

There are no carbohydrates in this entry.

6.4 Ligands [i](#)

In the following table, the Atoms column lists the number of modelled atoms in the group and the number defined in the chemical component dictionary. The B-factors column lists the minimum, median, 95th percentile and maximum values of B factors of atoms in the group. The column labelled 'Q < 0.9' lists the number of atoms with occupancy less than 0.9.

Mol	Type	Chain	Res	Atoms	RSCC	RSR	B-factors(\AA^2)	Q<0.9
2	CTP	B	1529	29/29	0.83	0.27	110,130,146,154	0
2	CTP	A	1528	29/29	0.85	0.24	105,120,129,133	0
3	MG	A	1529	1/1	0.86	0.18	75,75,75,75	0
3	MG	B	1530	1/1	0.90	0.13	88,88,88,88	0

6.5 Other polymers [i](#)

There are no such residues in this entry.