



# Full wwPDB X-ray Structure Validation Report ⓘ

Jul 26, 2023 – 03:18 AM EDT

PDB ID : 1A46  
Title : THROMBIN COMPLEXED WITH HIRUGEN AND A BETA-STRAND  
MIMETIC INHIBITOR  
Authors : St Charles, R.; Matthews, J.H.; Zhang, E.; Tulinsky, A.; Kahn, M.  
Deposited on : 1998-02-11  
Resolution : 2.12 Å(reported)

This is a Full wwPDB X-ray Structure Validation Report for a publicly released PDB entry.

We welcome your comments at [validation@mail.wwpdb.org](mailto:validation@mail.wwpdb.org)

A user guide is available at

<https://www.wwpdb.org/validation/2017/XrayValidationReportHelp>

with specific help available everywhere you see the ⓘ symbol.

The types of validation reports are described at

<http://www.wwpdb.org/validation/2017/FAQs#types>.

---

The following versions of software and data (see [references ⓘ](#)) were used in the production of this report:

MolProbity : 4.02b-467  
Mogul : 1.8.5 (274361), CSD as541be (2020)  
Xtrriage (Phenix) : 1.13  
EDS : 2.34  
buster-report : 1.1.7 (2018)  
Percentile statistics : 20191225.v01 (using entries in the PDB archive December 25th 2019)  
Refmac : 5.8.0158  
CCP4 : 7.0.044 (Gargrove)  
Ideal geometry (proteins) : Engh & Huber (2001)  
Ideal geometry (DNA, RNA) : Parkinson et al. (1996)  
Validation Pipeline (wwPDB-VP) : 2.34

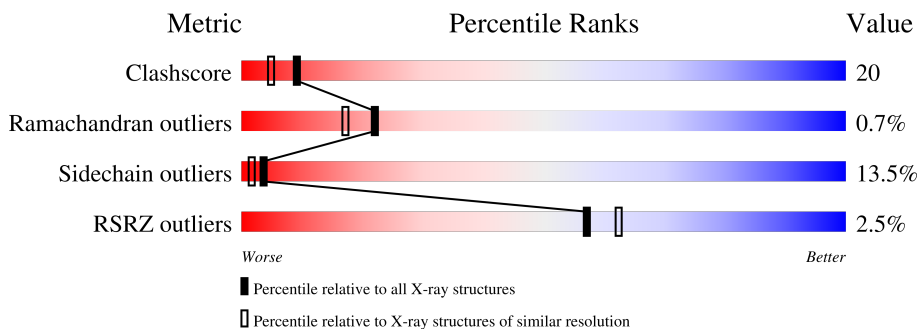
# 1 Overall quality at a glance

The following experimental techniques were used to determine the structure:

*X-RAY DIFFRACTION*

The reported resolution of this entry is 2.12 Å.

Percentile scores (ranging between 0-100) for global validation metrics of the entry are shown in the following graphic. The table shows the number of entries on which the scores are based.



Metric	Whole archive (#Entries)	Similar resolution (#Entries, resolution range(Å))
Clashscore	141614	6778 (2.14-2.10)
Ramachandran outliers	138981	6705 (2.14-2.10)
Sidechain outliers	138945	6706 (2.14-2.10)
RSRZ outliers	127900	6112 (2.14-2.10)

The table below summarises the geometric issues observed across the polymeric chains and their fit to the electron density. The red, orange, yellow and green segments of the lower bar indicate the fraction of residues that contain outliers for  $\geq 3$ , 2, 1 and 0 types of geometric quality criteria respectively. A grey segment represents the fraction of residues that are not modelled. The numeric value for each fraction is indicated below the corresponding segment, with a dot representing fractions  $\leq 5\%$ . The upper red bar (where present) indicates the fraction of residues that have poor fit to the electron density. The numeric value is given above the bar.

Mol	Chain	Length	Quality of chain
1	L	36	
2	H	259	
3	I	12	

## 2 Entry composition [i](#)

There are 6 unique types of molecules in this entry. The entry contains 2503 atoms, of which 0 are hydrogens and 0 are deuteriums.

In the tables below, the ZeroOcc column contains the number of atoms modelled with zero occupancy, the AltConf column contains the number of residues with at least one atom in alternate conformation and the Trace column contains the number of residues modelled with at most 2 atoms.

- Molecule 1 is a protein called ALPHA-THROMBIN (SMALL SUBUNIT).

Mol	Chain	Residues	Atoms					ZeroOcc	AltConf	Trace
			Total	C	N	O	S			
1	L	26	214	135	34	44	1	0	0	0

- Molecule 2 is a protein called ALPHA-THROMBIN (LARGE SUBUNIT).

Mol	Chain	Residues	Atoms					ZeroOcc	AltConf	Trace
			Total	C	N	O	S			
2	H	250	2008	1279	355	360	14	0	0	0

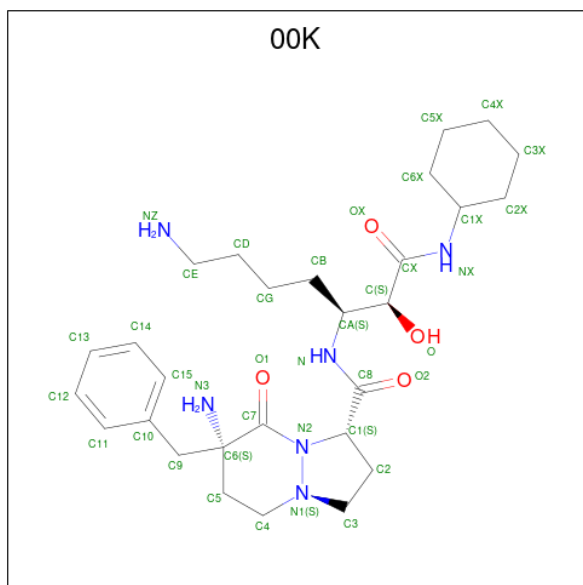
- Molecule 3 is a protein called HIRUGEN.

Mol	Chain	Residues	Atoms					ZeroOcc	AltConf	Trace
			Total	C	N	O	S			
3	I	10	76	48	10	17	1	0	0	0

- Molecule 4 is SODIUM ION (three-letter code: NA) (formula: Na).

Mol	Chain	Residues	Atoms		ZeroOcc	AltConf
4	H	2	Total	Na	0	0
			2	2		

- Molecule 5 is (1S,7S)-7-amino-N-[(2R,3S)-7-amino-1-(cyclohexylamino)-2-hydroxy-1-oxoheptan-3-yl]-7-benzyl-8-oxohexahydro-1H-pyrazolo[1,2-a]pyridazine-1-carboxamide (three-letter code: 00K) (formula: C<sub>28</sub>H<sub>44</sub>N<sub>6</sub>O<sub>4</sub>).



Mol	Chain	Residues	Atoms				ZeroOcc	AltConf
			Total	C	N	O		
5	H	1	38	28	6	4	0	0

- Molecule 6 is water.

Mol	Chain	Residues	Atoms		ZeroOcc	AltConf
6	L	15	Total	O	0	0
			15	15		
6	H	148	Total	O	0	0
			148	148		
6	I	2	Total	O	0	0
			2	2		

### 3 Residue-property plots [i](#)

These plots are drawn for all protein, RNA, DNA and oligosaccharide chains in the entry. The first graphic for a chain summarises the proportions of the various outlier classes displayed in the second graphic. The second graphic shows the sequence view annotated by issues in geometry and electron density. Residues are color-coded according to the number of geometric quality criteria for which they contain at least one outlier: green = 0, yellow = 1, orange = 2 and red = 3 or more. A red dot above a residue indicates a poor fit to the electron density ( $RSRZ > 2$ ). Stretches of 2 or more consecutive residues without any outlier are shown as a green connector. Residues present in the sample, but not in the model, are shown in grey.

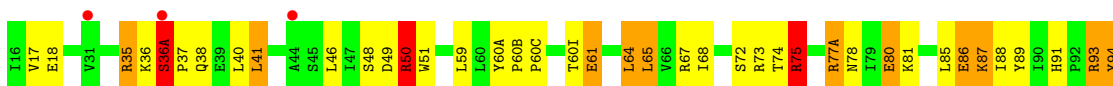
- Molecule 1: ALPHA-THROMBIN (SMALL SUBUNIT)

Chain L: 



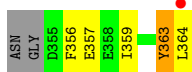
- Molecule 2: ALPHA-THROMBIN (LARGE SUBUNIT)

Chain H: 



- Molecule 3: HIRUGEN

Chain I: 



## 4 Data and refinement statistics

Property	Value	Source
Space group	C 1 2 1	Depositor
Cell constants a, b, c, $\alpha$ , $\beta$ , $\gamma$	71.30Å 73.09Å 73.82Å 90.00° 101.12° 90.00°	Depositor
Resolution (Å)	7.00 – 2.12 28.00 – 2.13	Depositor EDS
% Data completeness (in resolution range)	75.0 (7.00-2.12) 77.3 (28.00-2.13)	Depositor EDS
$R_{merge}$	0.04	Depositor
$R_{sym}$	(Not available)	Depositor
$\langle I/\sigma(I) \rangle$	-	Xtrriage
Refinement program	PROFFT	Depositor
R, $R_{free}$	0.155 , (Not available) 0.151 , (Not available)	Depositor DCC
$R_{free}$ test set	No test flags present.	wwPDB-VP
Wilson B-factor (Å <sup>2</sup> )	20.5	Xtrriage
Anisotropy	0.326	Xtrriage
Bulk solvent $k_{sol}$ (e/Å <sup>3</sup> ), $B_{sol}$ (Å <sup>2</sup> )	0.31 , 85.5	EDS
L-test for twinning <sup>1</sup>	$\langle  L  \rangle = 0.44$ , $\langle L^2 \rangle = 0.26$	Xtrriage
Estimated twinning fraction	No twinning to report.	Xtrriage
$F_o, F_c$ correlation	0.96	EDS
Total number of atoms	2503	wwPDB-VP
Average B, all atoms (Å <sup>2</sup> )	23.0	wwPDB-VP

Xtrriage's analysis on translational NCS is as follows: *The largest off-origin peak in the Patterson function is 7.37% of the height of the origin peak. No significant pseudotranslation is detected.*

<sup>1</sup>Theoretical values of  $\langle |L| \rangle$ ,  $\langle L^2 \rangle$  for acentric reflections are 0.5, 0.333 respectively for untwinned datasets, and 0.375, 0.2 for perfectly twinned datasets.

## 5 Model quality i

### 5.1 Standard geometry i

Bond lengths and bond angles in the following residue types are not validated in this section: TYS, NA, 00K

The Z score for a bond length (or angle) is the number of standard deviations the observed value is removed from the expected value. A bond length (or angle) with  $|Z| > 5$  is considered an outlier worth inspection. RMSZ is the root-mean-square of all Z scores of the bond lengths (or angles).

Mol	Chain	Bond lengths		Bond angles	
		RMSZ	# Z  >5	RMSZ	# Z  >5
1	L	1.16	0/216	1.89	5/288 (1.7%)
2	H	1.19	0/2060	1.89	55/2785 (2.0%)
3	I	1.08	0/60	1.42	0/76
All	All	1.19	0/2336	1.88	60/3149 (1.9%)

There are no bond length outliers.

All (60) bond angle outliers are listed below:

Mol	Chain	Res	Type	Atoms	Z	Observed(°)	Ideal(°)
2	H	35	ARG	NE-CZ-NH2	-20.33	110.14	120.30
2	H	97	ARG	NE-CZ-NH2	-17.34	111.63	120.30
2	H	35	ARG	NE-CZ-NH1	11.58	126.09	120.30
2	H	61	GLU	CB-CG-CD	9.65	140.24	114.20
2	H	101	ARG	NE-CZ-NH2	-9.45	115.58	120.30
2	H	60(A)	TYR	CB-CG-CD1	-9.15	115.51	121.00
2	H	67	ARG	NE-CZ-NH1	9.01	124.81	120.30
2	H	93	ARG	CD-NE-CZ	8.70	135.78	123.60
1	L	1(A)	ASP	CB-CG-OD1	-8.66	110.51	118.30
2	H	189	ASP	CB-CG-OD2	8.48	125.93	118.30
2	H	97	ARG	NE-CZ-NH1	8.47	124.53	120.30
2	H	61	GLU	CA-CB-CG	8.44	131.97	113.40
2	H	50	ARG	NE-CZ-NH1	-8.44	116.08	120.30
2	H	126	ARG	NE-CZ-NH1	8.33	124.46	120.30
2	H	164	GLU	CG-CD-OE2	8.27	134.85	118.30
2	H	221(A)	ARG	NE-CZ-NH2	8.21	124.40	120.30
2	H	192	GLU	OE1-CD-OE2	-8.18	113.49	123.30
1	L	14(D)	ARG	NE-CZ-NH1	8.14	124.37	120.30
2	H	246	GLY	CA-C-O	-7.34	107.38	120.60
2	H	184(A)	TYR	CB-CG-CD1	-7.29	116.63	121.00
2	H	175	ARG	CD-NE-CZ	-7.23	113.47	123.60

*Continued on next page...*

*Continued from previous page...*

Mol	Chain	Res	Type	Atoms	Z	Observed(°)	Ideal(°)
2	H	165	ARG	NE-CZ-NH2	-7.13	116.74	120.30
2	H	164	GLU	CG-CD-OE1	-6.70	104.90	118.30
2	H	116	ASP	CB-CG-OD1	6.59	124.23	118.30
2	H	61	GLU	CG-CD-OE1	6.54	131.38	118.30
2	H	173	ARG	NE-CZ-NH2	-6.54	117.03	120.30
2	H	134	TYR	CB-CG-CD1	6.50	124.90	121.00
2	H	205	ASN	OD1-CG-ND2	6.31	136.42	121.90
2	H	186(A)	ASP	CB-CG-OD1	-6.23	112.69	118.30
2	H	126	ARG	CD-NE-CZ	5.93	131.90	123.60
2	H	101	ARG	NE-CZ-NH1	5.87	123.23	120.30
2	H	186(A)	ASP	N-CA-CB	-5.87	100.04	110.60
2	H	225	TYR	CB-CG-CD1	-5.78	117.53	121.00
2	H	186	PRO	C-N-CA	5.71	135.98	121.70
2	H	154	VAL	N-CA-CB	-5.65	99.06	111.50
2	H	61	GLU	OE1-CD-OE2	-5.54	116.65	123.30
2	H	75	ARG	CA-CB-CG	-5.53	101.23	113.40
2	H	153	SER	N-CA-CB	5.52	118.78	110.50
1	L	14(C)	GLU	CG-CD-OE1	-5.46	107.37	118.30
2	H	80	GLU	CG-CD-OE2	-5.39	107.52	118.30
2	H	73	ARG	NE-CZ-NH1	5.34	122.97	120.30
2	H	123	LEU	CA-CB-CG	5.33	127.57	115.30
2	H	165	ARG	CD-NE-CZ	5.33	131.07	123.60
2	H	65	LEU	CB-CG-CD2	-5.30	101.99	111.00
2	H	205	ASN	CA-CB-CG	-5.30	101.74	113.40
2	H	233	ARG	CD-NE-CZ	-5.29	116.19	123.60
2	H	126	ARG	NH1-CZ-NH2	-5.28	113.59	119.40
2	H	86	GLU	CG-CD-OE2	-5.28	107.74	118.30
2	H	77(A)	ARG	NE-CZ-NH2	-5.27	117.66	120.30
2	H	205	ASN	N-CA-CB	-5.23	101.19	110.60
2	H	125	ASP	CB-CG-OD1	5.22	123.00	118.30
2	H	186(D)	LYS	CB-CA-C	5.21	120.82	110.40
1	L	14	ASP	CB-CG-OD1	-5.17	113.65	118.30
2	H	40	LEU	O-C-N	5.12	130.89	122.70
2	H	67	ARG	NH1-CZ-NH2	-5.11	113.78	119.40
2	H	134	TYR	CB-CG-CD2	-5.11	117.94	121.00
2	H	187	ARG	NE-CZ-NH1	-5.11	117.75	120.30
2	H	187	ARG	CD-NE-CZ	-5.05	116.53	123.60
1	L	14	ASP	CB-CA-C	5.01	120.43	110.40
2	H	154	VAL	CG1-CB-CG2	5.01	118.91	110.90

There are no chirality outliers.

There are no planarity outliers.



## 5.2 Too-close contacts

In the following table, the Non-H and H(model) columns list the number of non-hydrogen atoms and hydrogen atoms in the chain respectively. The H(added) column lists the number of hydrogen atoms added and optimized by MolProbity. The Clashes column lists the number of clashes within the asymmetric unit, whereas Symm-Clashes lists symmetry-related clashes.

Mol	Chain	Non-H	H(model)	H(added)	Clashes	Symm-Clashes
1	L	214	0	211	8	0
2	H	2008	0	1962	81	1
3	I	76	0	55	4	1
4	H	2	0	0	0	0
5	H	38	0	43	7	0
6	H	148	0	0	4	0
6	I	2	0	0	0	0
6	L	15	0	0	1	0
All	All	2503	0	2271	91	1

The all-atom clashscore is defined as the number of clashes found per 1000 atoms (including hydrogen atoms). The all-atom clashscore for this structure is 20.

All (91) close contacts within the same asymmetric unit are listed below, sorted by their clash magnitude.

Atom-1	Atom-2	Interatomic distance (Å)	Clash overlap (Å)
2:H:75:ARG:HH11	2:H:75:ARG:CG	1.50	1.21
2:H:195:SER:OG	5:H:372:00K:H40	0.94	1.10
2:H:75:ARG:HH11	2:H:75:ARG:HG3	0.93	1.08
2:H:139:THR:HG22	2:H:157:VAL:HG22	1.38	1.05
2:H:75:ARG:HG3	2:H:75:ARG:NH1	1.56	0.99
2:H:50:ARG:HH21	2:H:107:LYS:HE2	1.29	0.98
2:H:50:ARG:NH2	2:H:107:LYS:HE2	1.87	0.89
2:H:195:SER:HG	5:H:372:00K:H40	1.38	0.87
2:H:244:GLN:HG2	2:H:245:PHE:CE2	2.15	0.81
2:H:75:ARG:N	2:H:75:ARG:HD3	1.94	0.81
2:H:139:THR:CG2	2:H:157:VAL:HG22	2.12	0.79
2:H:85:LEU:HD13	2:H:106:MET:HE2	1.69	0.74
1:L:14(D):ARG:NH1	1:L:14(H):GLU:OE2	2.23	0.72
2:H:36(A):SER:HA	2:H:37:PRO:C	2.11	0.70
2:H:164:GLU:H	2:H:164:GLU:CD	1.95	0.69
2:H:143:ASN:HA	2:H:150:GLY:O	1.92	0.68
2:H:50:ARG:HG2	2:H:50:ARG:NH1	2.08	0.68
1:L:10:LYS:HE2	6:L:477:HOH:O	1.95	0.67
2:H:242:ILE:O	2:H:246:GLY:O	2.13	0.67

*Continued on next page...*

*Continued from previous page...*

Atom-1	Atom-2	Interatomic distance (Å)	Clash overlap (Å)
2:H:50:ARG:HH11	2:H:50:ARG:CG	2.07	0.67
2:H:93:ARG:NH1	6:H:532:HOH:O	2.29	0.66
2:H:164:GLU:N	2:H:164:GLU:OE1	2.28	0.65
2:H:244:GLN:HG2	2:H:245:PHE:CD2	2.31	0.64
2:H:75:ARG:HH11	2:H:75:ARG:HG2	1.54	0.63
2:H:75:ARG:CG	2:H:75:ARG:NH1	2.21	0.62
2:H:87:LYS:HD3	2:H:88:ILE:H	1.63	0.61
2:H:50:ARG:HE	2:H:107:LYS:CE	2.13	0.61
2:H:74:THR:O	6:H:470:HOH:O	2.16	0.61
2:H:187:ARG:NH2	2:H:221:ASP:O	2.33	0.60
2:H:35:ARG:O	2:H:38:GLN:HA	2.00	0.60
2:H:50:ARG:HG2	2:H:50:ARG:HH11	1.64	0.60
2:H:195:SER:CB	5:H:372:00K:H40	2.19	0.59
2:H:77(A):ARG:O	2:H:78:ASN:HB2	2.00	0.59
1:L:14(D):ARG:HG3	1:L:14(D):ARG:HH11	1.67	0.58
2:H:87:LYS:HD3	2:H:88:ILE:N	2.19	0.58
1:L:14(D):ARG:CZ	1:L:14(H):GLU:OE2	2.51	0.58
2:H:205:ASN:ND2	6:H:485:HOH:O	2.36	0.58
2:H:36:LYS:HG2	3:I:364:LEU:HD23	1.86	0.58
2:H:165:ARG:N	2:H:166:PRO:CD	2.68	0.57
2:H:165:ARG:N	2:H:166:PRO:HD2	2.20	0.57
2:H:185:LYS:HB2	2:H:186(B):GLU:HG3	1.87	0.56
2:H:72:SER:OG	2:H:75:ARG:HG2	2.05	0.56
2:H:195:SER:CB	5:H:372:00K:C	2.81	0.56
2:H:85:LEU:CD1	2:H:106:MET:HE2	2.36	0.55
2:H:85:LEU:HD11	2:H:106:MET:HE1	1.88	0.55
2:H:204(B):ASN:O	2:H:205:ASN:HB2	2.05	0.55
2:H:167:VAL:HG11	2:H:185:LYS:HE2	1.88	0.55
2:H:50:ARG:CZ	2:H:107:LYS:HE2	2.36	0.55
2:H:17:VAL:O	2:H:188:GLY:HA2	2.06	0.55
2:H:195:SER:OG	5:H:372:00K:CX	2.52	0.55
1:L:14(C):GLU:O	1:L:14(G):LEU:HD23	2.08	0.54
2:H:136:GLY:HA3	2:H:199:PHE:CZ	2.43	0.53
2:H:151:GLN:OE1	6:H:544:HOH:O	2.19	0.53
2:H:17:VAL:O	2:H:18:GLU:HB2	2.08	0.53
2:H:36(A):SER:CA	2:H:37:PRO:C	2.78	0.52
2:H:195:SER:HG	5:H:372:00K:C	2.07	0.51
2:H:85:LEU:CD1	2:H:106:MET:CE	2.88	0.50
2:H:87:LYS:HB3	2:H:89:TYR:CE1	2.47	0.50
1:L:14(G):LEU:HD22	1:L:14(G):LEU:N	2.27	0.49
2:H:164:GLU:C	2:H:166:PRO:HD2	2.33	0.49

*Continued on next page...*

Continued from previous page...

Atom-1	Atom-2	Interatomic distance (Å)	Clash overlap (Å)
2:H:244:GLN:HG2	2:H:245:PHE:CZ	2.47	0.49
2:H:204(B):ASN:O	2:H:205:ASN:CB	2.60	0.49
1:L:14(I):SER:C	1:L:14(K):ILE:H	2.17	0.48
2:H:49:ASP:HB3	2:H:114:PHE:CZ	2.48	0.48
2:H:80:GLU:O	2:H:81:LYS:HD3	2.14	0.48
2:H:215:TRP:HB2	5:H:372:00K:H11	1.96	0.47
2:H:50:ARG:NH2	2:H:86:GLU:OE1	2.47	0.47
2:H:244:GLN:NE2	2:H:245:PHE:CZ	2.83	0.47
2:H:50:ARG:NE	2:H:107:LYS:CE	2.77	0.46
2:H:91:HIS:CE1	2:H:101:ARG:HD3	2.51	0.46
1:L:14(I):SER:C	1:L:14(K):ILE:N	2.69	0.45
2:H:156:GLN:C	2:H:157:VAL:HG23	2.37	0.45
2:H:85:LEU:HD11	2:H:106:MET:CE	2.47	0.44
2:H:204(B):ASN:C	2:H:204(B):ASN:HD22	2.20	0.44
3:I:359:ILE:HG21	3:I:359:ILE:HD13	1.70	0.44
2:H:51:TRP:CZ3	2:H:107:LYS:HB3	2.54	0.43
2:H:232:PHE:O	2:H:235:LYS:HB2	2.17	0.43
2:H:50:ARG:HE	2:H:107:LYS:NZ	2.16	0.43
2:H:175:ARG:HH11	2:H:175:ARG:HD2	1.57	0.43
2:H:240:LYS:NZ	2:H:244:GLN:OE1	2.49	0.43
2:H:41:LEU:CD2	2:H:64:LEU:CD2	2.97	0.42
2:H:174:ILE:HG23	2:H:174:ILE:HD12	1.78	0.42
2:H:59:LEU:HD13	2:H:88:ILE:HD13	2.01	0.42
2:H:17:VAL:HG12	2:H:18:GLU:HG2	2.01	0.42
2:H:60(B):PRO:N	2:H:60(C):PRO:HD2	2.35	0.42
2:H:185:LYS:HZ3	2:H:185:LYS:HG3	1.74	0.41
2:H:74:THR:HB	3:I:356:PHE:HA	2.02	0.41
3:I:363:TYS:HD1	3:I:363:TYS:HA	1.95	0.40
2:H:94:TYR:CZ	2:H:96:TRP:HB3	2.56	0.40
2:H:184(A):TYR:HA	2:H:186(B):GLU:OE1	2.22	0.40
2:H:211:GLY:HA2	2:H:229:THR:O	2.21	0.40

All (1) symmetry-related close contacts are listed below. The label for Atom-2 includes the symmetry operator and encoded unit-cell translations to be applied.

Atom-1	Atom-2	Interatomic distance (Å)	Clash overlap (Å)
2:H:75:ARG:NH1	3:I:357:GLU:OE1[2_555]	2.02	0.18

## 5.3 Torsion angles [i](#)

### 5.3.1 Protein backbone [i](#)

In the following table, the Percentiles column shows the percent Ramachandran outliers of the chain as a percentile score with respect to all X-ray entries followed by that with respect to entries of similar resolution.

The Analysed column shows the number of residues for which the backbone conformation was analysed, and the total number of residues.

Mol	Chain	Analysed	Favoured	Allowed	Outliers	Percentiles	
1	L	24/36 (67%)	23 (96%)	1 (4%)	0	100	100
2	H	246/259 (95%)	234 (95%)	10 (4%)	2 (1%)	19	14
3	I	7/12 (58%)	7 (100%)	0	0	100	100
All	All	277/307 (90%)	264 (95%)	11 (4%)	2 (1%)	22	17

All (2) Ramachandran outliers are listed below:

Mol	Chain	Res	Type
2	H	195	SER
2	H	36(A)	SER

### 5.3.2 Protein sidechains [i](#)

In the following table, the Percentiles column shows the percent sidechain outliers of the chain as a percentile score with respect to all X-ray entries followed by that with respect to entries of similar resolution.

The Analysed column shows the number of residues for which the sidechain conformation was analysed, and the total number of residues.

Mol	Chain	Analysed	Rotameric	Outliers	Percentiles	
1	L	24/31 (77%)	21 (88%)	3 (12%)	4	2
2	H	215/225 (96%)	185 (86%)	30 (14%)	3	1
3	I	5/10 (50%)	5 (100%)	0	100	100
All	All	244/266 (92%)	211 (86%)	33 (14%)	4	2

All (33) residues with a non-rotameric sidechain are listed below:

Mol	Chain	Res	Type
1	L	6	LEU

*Continued on next page...*

*Continued from previous page...*

Mol	Chain	Res	Type
1	L	14	ASP
1	L	14(D)	ARG
2	H	36(A)	SER
2	H	41	LEU
2	H	46	LEU
2	H	48	SER
2	H	50	ARG
2	H	60(I)	THR
2	H	61	GLU
2	H	64	LEU
2	H	65	LEU
2	H	68	ILE
2	H	75	ARG
2	H	87	LYS
2	H	94	TYR
2	H	107	LYS
2	H	109	LYS
2	H	127	GLU
2	H	129(B)	SER
2	H	130	LEU
2	H	145	LYS
2	H	154	VAL
2	H	164	GLU
2	H	169	LYS
2	H	182	CYS
2	H	204(B)	ASN
2	H	205	ASN
2	H	221(A)	ARG
2	H	222	ASP
2	H	233	ARG
2	H	235	LYS
2	H	241	VAL

Sometimes sidechains can be flipped to improve hydrogen bonding and reduce clashes. All (3) such sidechains are listed below:

Mol	Chain	Res	Type
2	H	156	GLN
2	H	204(B)	ASN
2	H	239	GLN

### 5.3.3 RNA [i](#)

There are no RNA molecules in this entry.

## 5.4 Non-standard residues in protein, DNA, RNA chains [i](#)

1 non-standard protein/DNA/RNA residue is modelled in this entry.

In the following table, the Counts columns list the number of bonds (or angles) for which Mogul statistics could be retrieved, the number of bonds (or angles) that are observed in the model and the number of bonds (or angles) that are defined in the Chemical Component Dictionary. The Link column lists molecule types, if any, to which the group is linked. The Z score for a bond length (or angle) is the number of standard deviations the observed value is removed from the expected value. A bond length (or angle) with  $|Z| > 2$  is considered an outlier worth inspection. RMSZ is the root-mean-square of all Z scores of the bond lengths (or angles).

Mol	Type	Chain	Res	Link	Bond lengths			Bond angles		
					Counts	RMSZ	# Z  > 2	Counts	RMSZ	# Z  > 2
3	TYS	I	363	3	15,16,17	2.27	2 (13%)	18,22,24	1.59	4 (22%)

In the following table, the Chirals column lists the number of chiral outliers, the number of chiral centers analysed, the number of these observed in the model and the number defined in the Chemical Component Dictionary. Similar counts are reported in the Torsion and Rings columns. '-' means no outliers of that kind were identified.

Mol	Type	Chain	Res	Link	Chirals	Torsions	Rings
3	TYS	I	363	3	-	2/10/11/13	0/1/1/1

All (2) bond length outliers are listed below:

Mol	Chain	Res	Type	Atoms	Z	Observed(Å)	Ideal(Å)
3	I	363	TYS	OH-S	7.15	1.69	1.58
3	I	363	TYS	OH-CZ	-3.99	1.36	1.42

All (4) bond angle outliers are listed below:

Mol	Chain	Res	Type	Atoms	Z	Observed(°)	Ideal(°)
3	I	363	TYS	OH-S-O2	-2.74	99.72	107.71
3	I	363	TYS	O2-S-O1	2.56	122.47	112.22
3	I	363	TYS	CB-CA-C	2.55	116.24	111.47
3	I	363	TYS	CG-CB-CA	-2.40	109.24	114.10

There are no chirality outliers.

All (2) torsion outliers are listed below:

Mol	Chain	Res	Type	Atoms
3	I	363	TYS	CA-CB-CG-CD1
3	I	363	TYS	CA-CB-CG-CD2

There are no ring outliers.

1 monomer is involved in 1 short contact:

Mol	Chain	Res	Type	Clashes	Symm-Clashes
3	I	363	TYS	1	0

## 5.5 Carbohydrates [i](#)

There are no monosaccharides in this entry.

## 5.6 Ligand geometry [i](#)

Of 3 ligands modelled in this entry, 2 are monoatomic - leaving 1 for Mogul analysis.

In the following table, the Counts columns list the number of bonds (or angles) for which Mogul statistics could be retrieved, the number of bonds (or angles) that are observed in the model and the number of bonds (or angles) that are defined in the Chemical Component Dictionary. The Link column lists molecule types, if any, to which the group is linked. The Z score for a bond length (or angle) is the number of standard deviations the observed value is removed from the expected value. A bond length (or angle) with  $|Z| > 2$  is considered an outlier worth inspection. RMSZ is the root-mean-square of all Z scores of the bond lengths (or angles).

Mol	Type	Chain	Res	Link	Bond lengths			Bond angles		
					Counts	RMSZ	# Z  > 2	Counts	RMSZ	# Z  > 2
5	00K	H	372	2	38,41,41	1.58	6 (15%)	41,57,57	2.83	15 (36%)

In the following table, the Chirals column lists the number of chiral outliers, the number of chiral centers analysed, the number of these observed in the model and the number defined in the Chemical Component Dictionary. Similar counts are reported in the Torsion and Rings columns. '-' means no outliers of that kind were identified.

Mol	Type	Chain	Res	Link	Chirals	Torsions	Rings
5	00K	H	372	2	-	3/29/67/67	0/3/4/4

All (6) bond length outliers are listed below:

Mol	Chain	Res	Type	Atoms	Z	Observed(Å)	Ideal(Å)
5	H	372	00K	O-C	-5.27	1.31	1.42
5	H	372	00K	C2-C3	3.51	1.59	1.52
5	H	372	00K	O2-C8	3.46	1.30	1.23
5	H	372	00K	O1-C7	3.24	1.27	1.22
5	H	372	00K	C8-N	2.39	1.39	1.34
5	H	372	00K	C12-C11	2.09	1.43	1.38

All (15) bond angle outliers are listed below:

Mol	Chain	Res	Type	Atoms	Z	Observed(°)	Ideal(°)
5	H	372	00K	C-CA-N	7.00	123.20	110.03
5	H	372	00K	C2-C1-C8	-6.56	97.22	111.22
5	H	372	00K	OX-CX-C	-6.31	108.62	120.00
5	H	372	00K	O2-C8-N	-5.17	113.35	122.93
5	H	372	00K	O-C-CX	-5.07	99.72	110.63
5	H	372	00K	CA-N-C8	4.48	130.99	123.07
5	H	372	00K	O-C-CA	4.11	120.19	108.54
5	H	372	00K	C-CX-NX	3.97	121.72	116.25
5	H	372	00K	CB-CA-N	3.71	115.21	110.33
5	H	372	00K	C2X-C1X-NX	3.37	117.54	110.56
5	H	372	00K	C7-N2-N1	3.37	125.73	120.23
5	H	372	00K	C1-C8-N	3.16	123.62	116.58
5	H	372	00K	OX-CX-NX	2.98	128.46	122.93
5	H	372	00K	C6X-C1X-NX	2.20	115.12	110.56
5	H	372	00K	C3-N1-N2	2.09	104.42	102.45

There are no chirality outliers.

All (3) torsion outliers are listed below:

Mol	Chain	Res	Type	Atoms
5	H	372	00K	O-C-CX-OX
5	H	372	00K	O-C-CA-CB
5	H	372	00K	CX-C-CA-CB

There are no ring outliers.

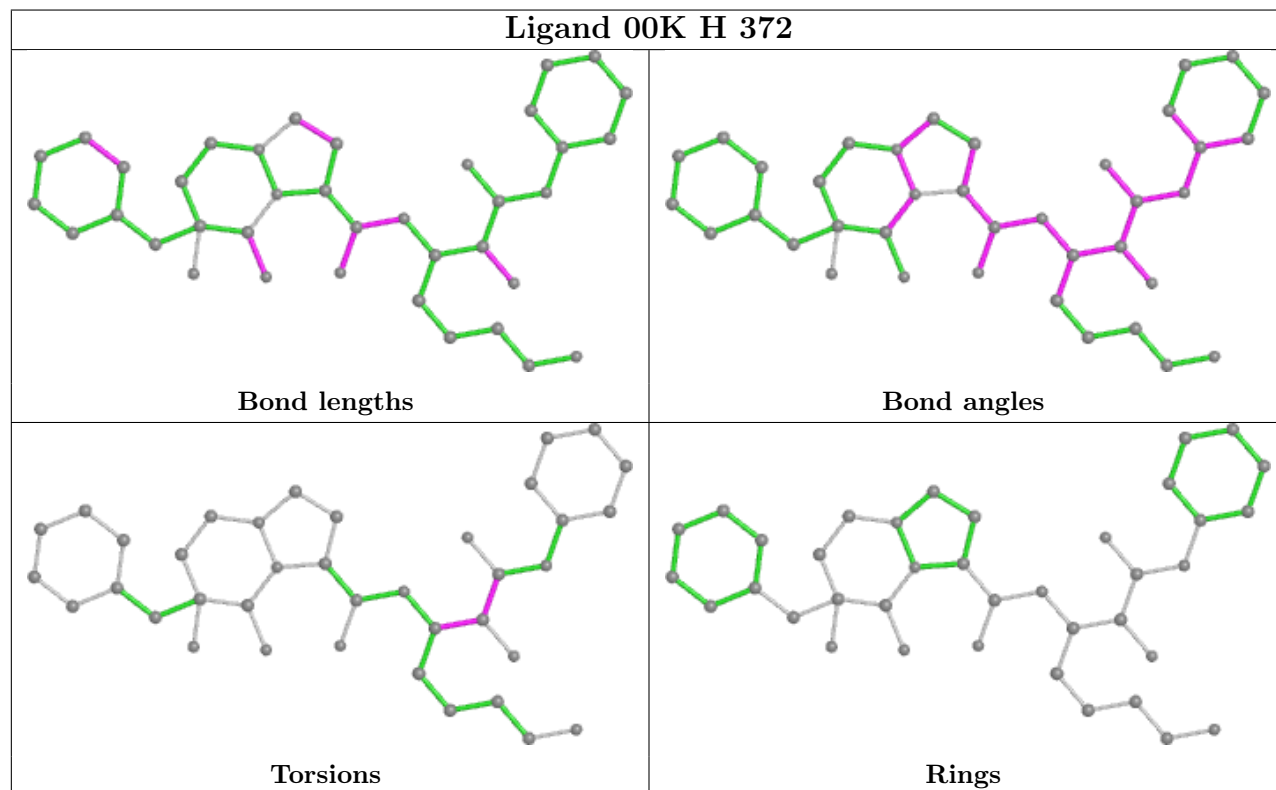
1 monomer is involved in 7 short contacts:

Mol	Chain	Res	Type	Clashes	Symm-Clashes
5	H	372	00K	7	0

The following is a two-dimensional graphical depiction of Mogul quality analysis of bond lengths, bond angles, torsion angles, and ring geometry for all instances of the Ligand of Interest. In



addition, ligands with molecular weight > 250 and outliers as shown on the validation Tables will also be included. For torsion angles, if less than 5% of the Mogul distribution of torsion angles is within 10 degrees of the torsion angle in question, then that torsion angle is considered an outlier. Any bond that is central to one or more torsion angles identified as an outlier by Mogul will be highlighted in the graph. For rings, the root-mean-square deviation (RMSD) between the ring in question and similar rings identified by Mogul is calculated over all ring torsion angles. If the average RMSD is greater than 60 degrees and the minimal RMSD between the ring in question and any Mogul-identified rings is also greater than 60 degrees, then that ring is considered an outlier. The outliers are highlighted in purple. The color gray indicates Mogul did not find sufficient equivalents in the CSD to analyse the geometry.



## 5.7 Other polymers [i](#)

There are no such residues in this entry.

## 5.8 Polymer linkage issues [i](#)

There are no chain breaks in this entry.

## 6 Fit of model and data [i](#)

### 6.1 Protein, DNA and RNA chains [i](#)

In the following table, the column labelled ‘#RSRZ> 2’ contains the number (and percentage) of RSRZ outliers, followed by percent RSRZ outliers for the chain as percentile scores relative to all X-ray entries and entries of similar resolution. The OWAB column contains the minimum, median, 95<sup>th</sup> percentile and maximum values of the occupancy-weighted average B-factor per residue. The column labelled ‘Q< 0.9’ lists the number of (and percentage) of residues with an average occupancy less than 0.9.

Mol	Chain	Analysed	<RSRZ>	#RSRZ>2	OWAB(Å <sup>2</sup> )	Q<0.9
1	L	26/36 (72%)	-0.72	0 <span style="border: 1px solid blue; padding: 2px;">100</span> <span style="border: 1px solid blue; padding: 2px;">100</span>	13, 19, 35, 41	0
2	H	250/259 (96%)	-0.32	6 (2%) <span style="border: 1px solid blue; padding: 2px;">59</span> <span style="border: 1px solid blue; padding: 2px;">64</span>	10, 20, 38, 49	0
3	I	9/12 (75%)	0.21	1 (11%) <span style="border: 1px solid red; padding: 2px;">5</span> <span style="border: 1px solid red; padding: 2px;">6</span>	41, 43, 45, 47	0
All	All	285/307 (92%)	-0.34	7 (2%) <span style="border: 1px solid blue; padding: 2px;">57</span> <span style="border: 1px solid blue; padding: 2px;">62</span>	10, 20, 41, 49	0

All (7) RSRZ outliers are listed below:

Mol	Chain	Res	Type	RSRZ
2	H	245	PHE	4.0
3	I	364	LEU	3.2
2	H	36(A)	SER	2.3
2	H	198	PRO	2.1
2	H	31	VAL	2.0
2	H	44	ALA	2.0
2	H	197	GLY	2.0

### 6.2 Non-standard residues in protein, DNA, RNA chains [i](#)

In the following table, the Atoms column lists the number of modelled atoms in the group and the number defined in the chemical component dictionary. The B-factors column lists the minimum, median, 95<sup>th</sup> percentile and maximum values of B factors of atoms in the group. The column labelled ‘Q< 0.9’ lists the number of atoms with occupancy less than 0.9.

Mol	Type	Chain	Res	Atoms	RSCC	RSR	B-factors(Å <sup>2</sup> )	Q<0.9
3	TYS	I	363	16/17	0.95	0.15	31,35,46,46	0

### 6.3 Carbohydrates [i](#)

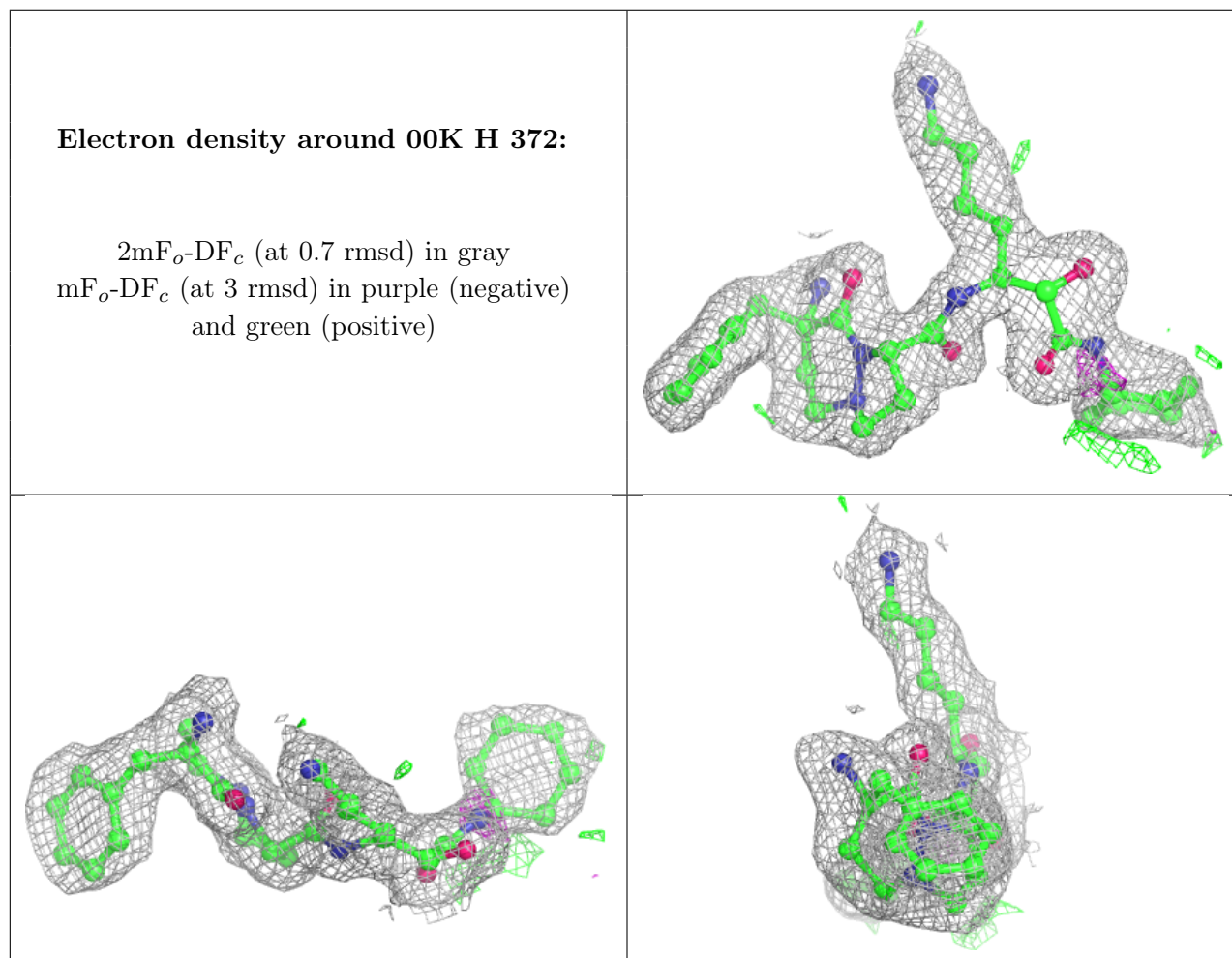
There are no monosaccharides in this entry.

## 6.4 Ligands [i](#)

In the following table, the Atoms column lists the number of modelled atoms in the group and the number defined in the chemical component dictionary. The B-factors column lists the minimum, median, 95<sup>th</sup> percentile and maximum values of B factors of atoms in the group. The column labelled 'Q< 0.9' lists the number of atoms with occupancy less than 0.9.

Mol	Type	Chain	Res	Atoms	RSCC	RSR	B-factors(Å <sup>2</sup> )	Q<0.9
5	00K	H	372	38/38	0.95	0.10	12,21,34,34	0
4	NA	H	548	1/1	0.99	0.06	24,24,24,24	1
4	NA	H	549	1/1	1.00	0.08	23,23,23,23	0

The following is a graphical depiction of the model fit to experimental electron density of all instances of the Ligand of Interest. In addition, ligands with molecular weight > 250 and outliers as shown on the geometry validation Tables will also be included. Each fit is shown from different orientation to approximate a three-dimensional view.



## 6.5 Other polymers [i](#)

There are no such residues in this entry.