



# Full wwPDB X-ray Structure Validation Report ⓘ

Mar 22, 2023 – 12:23 pm GMT

PDB ID : 8A5W  
Title : Crystal structure of the human phosphoserine aminotransferase (PSAT) in complex with O-phosphoserine  
Authors : Costanzi, E.; Demitri, N.; Ullah, R.; Marchesan, F.; Peracchi, A.; Zangelmi, E.; Storici, P.; Campanini, B.  
Deposited on : 2022-06-16  
Resolution : 2.78 Å(reported)

This is a Full wwPDB X-ray Structure Validation Report for a publicly released PDB entry.

We welcome your comments at [validation@mail.wwpdb.org](mailto:validation@mail.wwpdb.org)

A user guide is available at

<https://www.wwpdb.org/validation/2017/XrayValidationReportHelp>

with specific help available everywhere you see the ⓘ symbol.

The types of validation reports are described at

<http://www.wwpdb.org/validation/2017/FAQs#types>.

---

The following versions of software and data (see [references ⓘ](#)) were used in the production of this report:

MolProbity : 4.02b-467  
Mogul : 1.8.4, CSD as541be (2020)  
Xtrriage (Phenix) : 1.13  
EDS : 2.32.1  
buster-report : 1.1.7 (2018)  
Percentile statistics : 20191225.v01 (using entries in the PDB archive December 25th 2019)  
Refmac : 5.8.0158  
CCP4 : 7.0.044 (Gargrove)  
Ideal geometry (proteins) : Engh & Huber (2001)  
Ideal geometry (DNA, RNA) : Parkinson et al. (1996)  
Validation Pipeline (wwPDB-VP) : 2.32.1

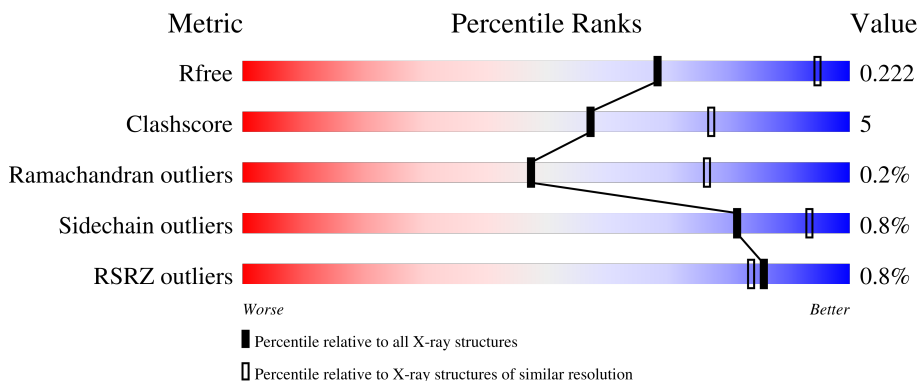
# 1 Overall quality at a glance

The following experimental techniques were used to determine the structure:

*X-RAY DIFFRACTION*

The reported resolution of this entry is 2.78 Å.

Percentile scores (ranging between 0-100) for global validation metrics of the entry are shown in the following graphic. The table shows the number of entries on which the scores are based.



Metric	Whole archive (#Entries)	Similar resolution (#Entries, resolution range(Å))
$R_{free}$	130704	4107 (2.80-2.76)
Clashscore	141614	4575 (2.80-2.76)
Ramachandran outliers	138981	4487 (2.80-2.76)
Sidechain outliers	138945	4489 (2.80-2.76)
RSRZ outliers	127900	4027 (2.80-2.76)

The table below summarises the geometric issues observed across the polymeric chains and their fit to the electron density. The red, orange, yellow and green segments of the lower bar indicate the fraction of residues that contain outliers for  $\geq 3$ , 2, 1 and 0 types of geometric quality criteria respectively. A grey segment represents the fraction of residues that are not modelled. The numeric value for each fraction is indicated below the corresponding segment, with a dot representing fractions  $\leq 5\%$ . The upper red bar (where present) indicates the fraction of residues that have poor fit to the electron density. The numeric value is given above the bar.

Mol	Chain	Length	Quality of chain
1	A	365	 88% 11%
1	D	365	 90% 9%
1	F	365	 85% 14%
2	E	393	 82% 11% 7%

*Continued on next page...*

*Continued from previous page...*

Mol	Chain	Length	Quality of chain
3	B	365	<p>2% 87% 11% 1%</p>
3	C	365	<p>2% 88% 10% 1%</p>
3	G	365	<p>2% 89% 9% 1%</p>
3	H	365	<p>2% 87% 11% 1%</p>

The following table lists non-polymeric compounds, carbohydrate monomers and non-standard residues in protein, DNA, RNA chains that are outliers for geometric or electron-density-fit criteria:

Mol	Type	Chain	Res	Chirality	Geometry	Clashes	Electron density
6	SEP	B	502	-	-	X	-
6	SEP	C	501	-	-	X	-
7	PMP	A	801	-	-	X	-

## 2 Entry composition i

There are 9 unique types of molecules in this entry. The entry contains 22746 atoms, of which 0 are hydrogens and 0 are deuteriums.

In the tables below, the ZeroOcc column contains the number of atoms modelled with zero occupancy, the AltConf column contains the number of residues with at least one atom in alternate conformation and the Trace column contains the number of residues modelled with at most 2 atoms.

- Molecule 1 is a protein called Phosphoserine aminotransferase.

Mol	Chain	Residues	Atoms					ZeroOcc	AltConf	Trace
			Total	C	N	O	S			
1	D	365	2803	1798	470	520	15	0	0	0
1	F	365	2803	1798	470	520	15	0	0	0
1	A	365	2803	1798	470	520	15	0	0	0

- Molecule 2 is a protein called Phosphoserine aminotransferase.

Mol	Chain	Residues	Atoms					ZeroOcc	AltConf	Trace
			Total	C	N	O	S			
2	E	365	2805	1798	472	520	15	0	0	0

There are 23 discrepancies between the modelled and reference sequences:

Chain	Residue	Modelled	Actual	Comment	Reference
E	-22	MET	-	initiating methionine	UNP Q9Y617
E	-21	GLY	-	expression tag	UNP Q9Y617
E	-20	SER	-	expression tag	UNP Q9Y617
E	-19	SER	-	expression tag	UNP Q9Y617
E	-18	HIS	-	expression tag	UNP Q9Y617
E	-17	HIS	-	expression tag	UNP Q9Y617
E	-16	HIS	-	expression tag	UNP Q9Y617
E	-15	HIS	-	expression tag	UNP Q9Y617
E	-14	HIS	-	expression tag	UNP Q9Y617
E	-13	HIS	-	expression tag	UNP Q9Y617
E	-12	SER	-	expression tag	UNP Q9Y617
E	-11	SER	-	expression tag	UNP Q9Y617
E	-10	GLY	-	expression tag	UNP Q9Y617
E	-9	LEU	-	expression tag	UNP Q9Y617
E	-8	VAL	-	expression tag	UNP Q9Y617
E	-7	PRO	-	expression tag	UNP Q9Y617

*Continued on next page...*

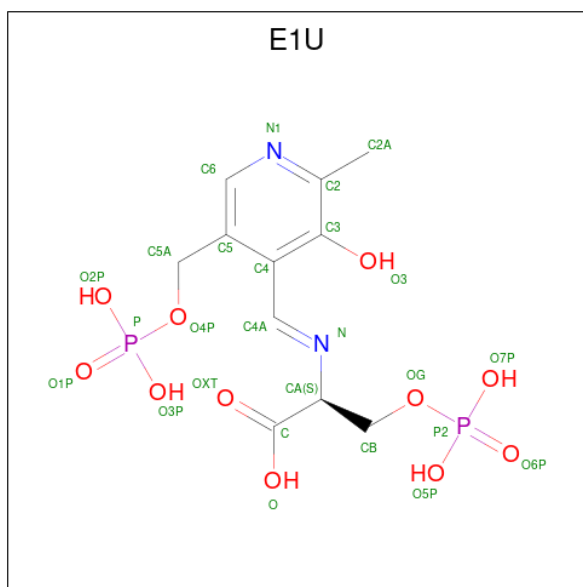
Continued from previous page...

Chain	Residue	Modelled	Actual	Comment	Reference
E	-6	ARG	-	expression tag	UNP Q9Y617
E	-5	GLY	-	expression tag	UNP Q9Y617
E	-4	SER	-	expression tag	UNP Q9Y617
E	-3	HIS	-	expression tag	UNP Q9Y617
E	-2	ILE	-	expression tag	UNP Q9Y617
E	-1	GLY	-	expression tag	UNP Q9Y617
E	0	PRO	-	expression tag	UNP Q9Y617

- Molecule 3 is a protein called Phosphoserine aminotransferase.

Mol	Chain	Residues	Atoms					ZeroOcc	AltConf	Trace	
			Total	C	N	O	P				S
3	C	365	Total 2818	C 1806	N 471	O 525	P 1	S 15	0	0	0
3	B	365	Total 2818	C 1806	N 471	O 525	P 1	S 15	0	0	0
3	G	365	Total 2818	C 1806	N 471	O 525	P 1	S 15	0	0	0
3	H	365	Total 2818	C 1806	N 471	O 525	P 1	S 15	0	0	0

- Molecule 4 is (2S)-2-[(E)-[2-methyl-3-oxidanyl-5-(phosphonooxymethyl)pyridin-4-yl]methylideneamino]-3-phosphonoxy-propanoic acid (three-letter code: E1U) (formula: C<sub>11</sub>H<sub>16</sub>N<sub>2</sub>O<sub>11</sub>P<sub>2</sub>) (labeled as "Ligand of Interest" by depositor).



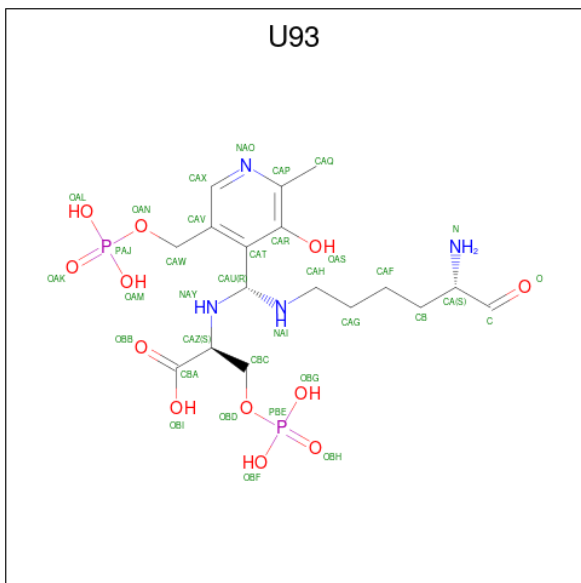
Mol	Chain	Residues	Atoms					ZeroOcc	AltConf
			Total	C	N	O	P		
4	D	1	Total 26	C 11	N 2	O 11	P 2	0	0

Continued on next page...

Continued from previous page...

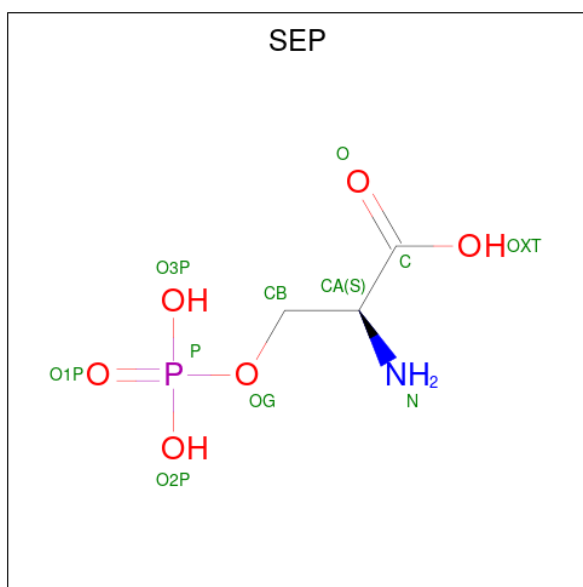
Mol	Chain	Residues	Atoms				ZeroOcc	AltConf	
			Total	C	N	O			P
4	F	1	26	11	2	11	2	0	0

- Molecule 5 is (2 {S})-2-[[({R})-[[5 {S})-5-azanyl-6-oxidanylidene-hexyl]amino]-[2-methyl-3-oxidanyl-5-(phosphonooxymethyl)pyridin-4-yl]methyl]amino]-3-phosphonooxy-propanoic acid (three-letter code: U93) (formula: C<sub>17</sub>H<sub>30</sub>N<sub>4</sub>O<sub>12</sub>P<sub>2</sub>) (labeled as "Ligand of Interest" by depositor).



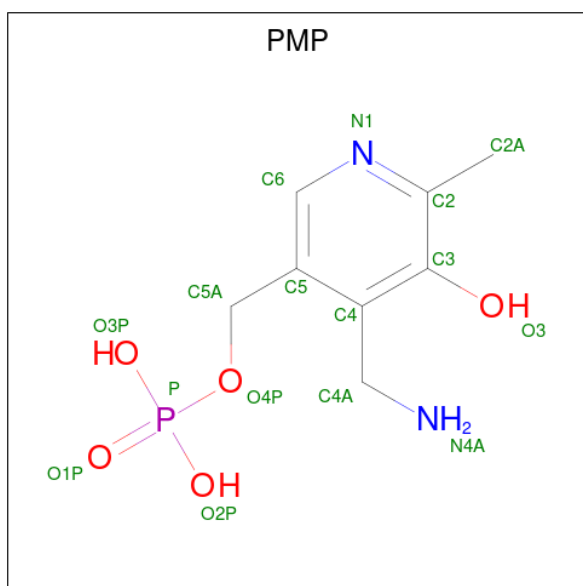
Mol	Chain	Residues	Atoms				ZeroOcc	AltConf	
			Total	C	N	O			P
5	E	1	35	17	4	12	2	0	0

- Molecule 6 is PHOSPHOSERINE (three-letter code: SEP) (formula: C<sub>3</sub>H<sub>8</sub>NO<sub>6</sub>P) (labeled as "Ligand of Interest" by depositor).



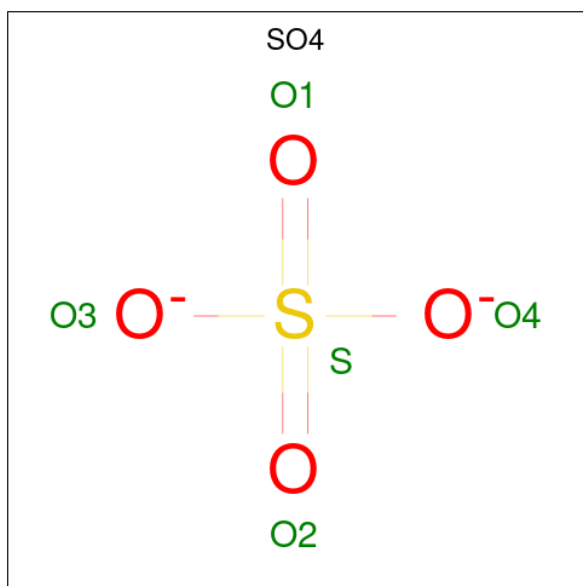
Mol	Chain	Residues	Atoms					ZeroOcc	AltConf
			Total	C	N	O	P		
6	C	1	Total 11	C 3	N 1	O 6	P 1	0	0
6	B	1	Total 11	C 3	N 1	O 6	P 1	0	0
6	B	1	Total 11	C 3	N 1	O 6	P 1	0	0

- Molecule 7 is 4'-DEOXY-4'-AMINOPYRIDOXAL-5'-PHOSPHATE (three-letter code: PMP) (formula:  $C_8H_{13}N_2O_5P$ ) (labeled as "Ligand of Interest" by depositor).



Mol	Chain	Residues	Atoms					ZeroOcc	AltConf
			Total	C	N	O	P		
7	A	1	16	8	2	5	1	0	0

- Molecule 8 is SULFATE ION (three-letter code: SO4) (formula: O<sub>4</sub>S).



Mol	Chain	Residues	Atoms			ZeroOcc	AltConf
			Total	O	S		
8	G	1	5	4	1	0	0
8	H	1	5	4	1	0	0

- Molecule 9 is water.

Mol	Chain	Residues	Atoms		ZeroOcc	AltConf
			Total	O		
9	D	16	16	16	0	0
9	E	16	16	16	0	0
9	C	14	14	14	0	0
9	B	8	8	8	0	0
9	F	21	21	21	0	0
9	A	14	14	14	0	0
9	G	18	18	18	0	0

*Continued on next page...*



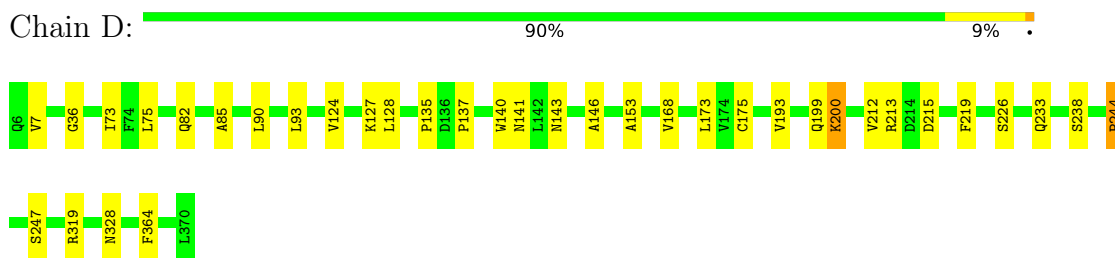
*Continued from previous page...*

<b>Mol</b>	<b>Chain</b>	<b>Residues</b>	<b>Atoms</b>		<b>ZeroOcc</b>	<b>AltConf</b>
9	H	7	Total	O	0	0
			7	7		

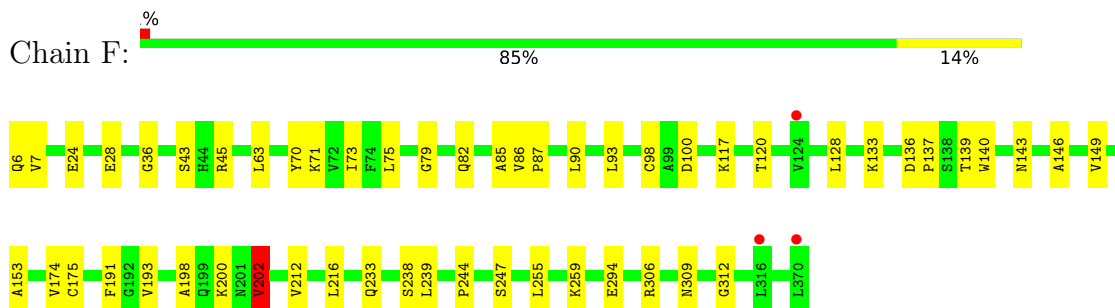
### 3 Residue-property plots [i](#)

These plots are drawn for all protein, RNA, DNA and oligosaccharide chains in the entry. The first graphic for a chain summarises the proportions of the various outlier classes displayed in the second graphic. The second graphic shows the sequence view annotated by issues in geometry and electron density. Residues are color-coded according to the number of geometric quality criteria for which they contain at least one outlier: green = 0, yellow = 1, orange = 2 and red = 3 or more. A red dot above a residue indicates a poor fit to the electron density ( $RSRZ > 2$ ). Stretches of 2 or more consecutive residues without any outlier are shown as a green connector. Residues present in the sample, but not in the model, are shown in grey.

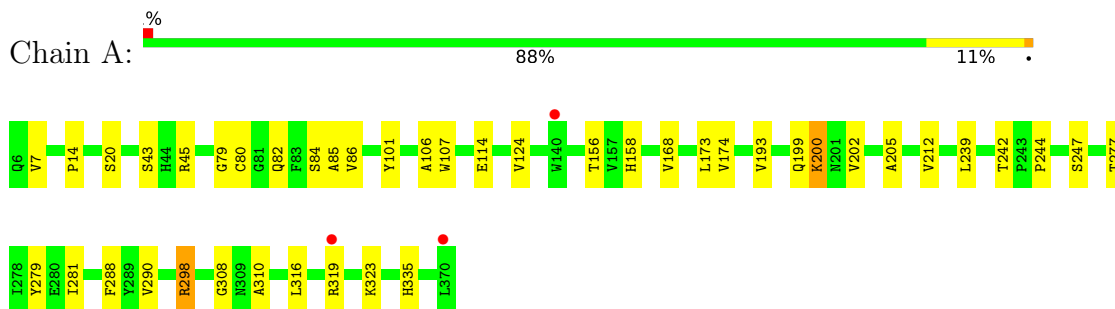
- Molecule 1: Phosphoserine aminotransferase



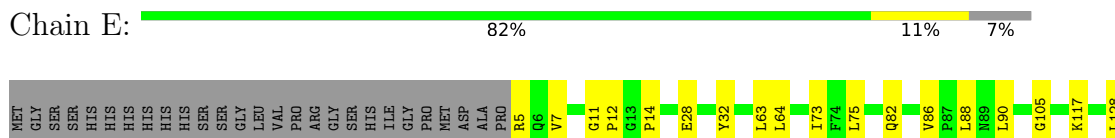
- Molecule 1: Phosphoserine aminotransferase



- Molecule 1: Phosphoserine aminotransferase

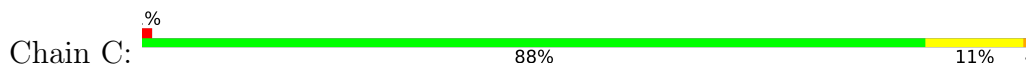


- Molecule 2: Phosphoserine aminotransferase

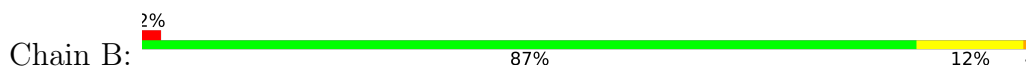




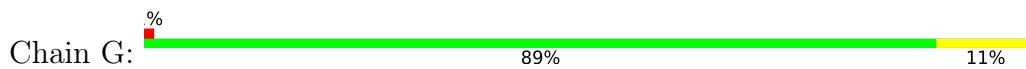
- Molecule 3: Phosphoserine aminotransferase



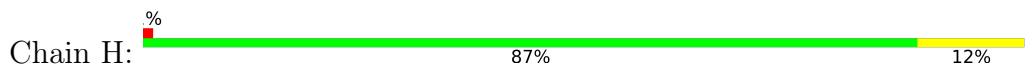
- Molecule 3: Phosphoserine aminotransferase



- Molecule 3: Phosphoserine aminotransferase



- Molecule 3: Phosphoserine aminotransferase



## 4 Data and refinement statistics i

Property	Value	Source
Space group	P 1 21 1	Depositor
Cell constants a, b, c, $\alpha$ , $\beta$ , $\gamma$	65.43Å 205.74Å 135.75Å 90.00° 97.88° 90.00°	Depositor
Resolution (Å)	51.44 – 2.78 134.47 – 2.78	Depositor EDS
% Data completeness (in resolution range)	67.6 (51.44-2.78) 67.6 (134.47-2.78)	Depositor EDS
$R_{merge}$	(Not available)	Depositor
$R_{sym}$	(Not available)	Depositor
$\langle I/\sigma(I) \rangle$ <sup>1</sup>	1.83 (at 2.77Å)	Xtrriage
Refinement program	PHENIX 1.19.2_4158, PHENIX 1.19.2_4158	Depositor
R, $R_{free}$	0.182 , 0.228 0.180 , 0.222	Depositor DCC
$R_{free}$ test set	2954 reflections (4.88%)	wwPDB-VP
Wilson B-factor (Å <sup>2</sup> )	51.8	Xtrriage
Anisotropy	0.061	Xtrriage
Bulk solvent $k_{sol}$ (e/Å <sup>3</sup> ), $B_{sol}$ (Å <sup>2</sup> )	0.31 , 30.4	EDS
L-test for twinning <sup>2</sup>	$\langle  L  \rangle = 0.48$ , $\langle L^2 \rangle = 0.30$	Xtrriage
Estimated twinning fraction	No twinning to report.	Xtrriage
$F_o, F_c$ correlation	0.92	EDS
Total number of atoms	22746	wwPDB-VP
Average B, all atoms (Å <sup>2</sup> )	46.0	wwPDB-VP

Xtrriage's analysis on translational NCS is as follows: *The largest off-origin peak in the Patterson function is 2.77% of the height of the origin peak. No significant pseudotranslation is detected.*

<sup>1</sup>Intensities estimated from amplitudes.

<sup>2</sup>Theoretical values of  $\langle |L| \rangle$ ,  $\langle L^2 \rangle$  for acentric reflections are 0.5, 0.333 respectively for untwinned datasets, and 0.375, 0.2 for perfectly twinned datasets.

## 5 Model quality [i](#)

### 5.1 Standard geometry [i](#)

Bond lengths and bond angles in the following residue types are not validated in this section: E1U, SO4, U93, LLP, PMP, SEP

The Z score for a bond length (or angle) is the number of standard deviations the observed value is removed from the expected value. A bond length (or angle) with  $|Z| > 5$  is considered an outlier worth inspection. RMSZ is the root-mean-square of all Z scores of the bond lengths (or angles).

Mol	Chain	Bond lengths		Bond angles	
		RMSZ	# Z  >5	RMSZ	# Z  >5
1	A	0.25	0/2861	0.45	0/3874
1	D	0.26	0/2861	0.46	0/3874
1	F	0.27	0/2861	0.45	0/3874
2	E	0.26	0/2862	0.46	0/3874
3	B	0.29	0/2851	0.47	0/3860
3	C	0.30	0/2851	0.47	0/3860
3	G	0.27	0/2851	0.46	0/3860
3	H	0.26	0/2851	0.46	0/3860
All	All	0.27	0/22849	0.46	0/30936

There are no bond length outliers.

There are no bond angle outliers.

There are no chirality outliers.

There are no planarity outliers.

### 5.2 Too-close contacts [i](#)

In the following table, the Non-H and H(model) columns list the number of non-hydrogen atoms and hydrogen atoms in the chain respectively. The H(added) column lists the number of hydrogen atoms added and optimized by MolProbity. The Clashes column lists the number of clashes within the asymmetric unit, whereas Symm-Clashes lists symmetry-related clashes.

Mol	Chain	Non-H	H(model)	H(added)	Clashes	Symm-Clashes
1	A	2803	0	2832	28	0
1	D	2803	0	2832	19	0
1	F	2803	0	2832	30	0
2	E	2805	0	2831	26	0
3	B	2818	0	2836	32	0

*Continued on next page...*

Continued from previous page...

Mol	Chain	Non-H	H(model)	H(added)	Clashes	Symm-Clashes
3	C	2818	0	2835	33	0
3	G	2818	0	2835	27	0
3	H	2818	0	2836	35	0
4	D	26	0	0	2	0
4	F	26	0	0	2	0
5	E	35	0	0	1	0
6	B	22	0	10	7	0
6	C	11	0	5	5	0
7	A	16	0	10	9	0
8	G	5	0	0	0	0
8	H	5	0	0	0	0
9	A	14	0	0	0	0
9	B	8	0	0	1	0
9	C	14	0	0	3	0
9	D	16	0	0	0	0
9	E	16	0	0	1	0
9	F	21	0	0	0	0
9	G	18	0	0	3	0
9	H	7	0	0	1	0
All	All	22746	0	22694	224	0

The all-atom clashscore is defined as the number of clashes found per 1000 atoms (including hydrogen atoms). The all-atom clashscore for this structure is 5.

All (224) close contacts within the same asymmetric unit are listed below, sorted by their clash magnitude.

Atom-1	Atom-2	Interatomic distance (Å)	Clash overlap (Å)
3:C:200:LLP:H4'1	6:C:501:SEP:N	1.55	1.19
3:C:200:LLP:C4'	6:C:501:SEP:H2	1.57	1.16
3:C:200:LLP:H4'1	6:C:501:SEP:H2	1.10	1.02
3:C:200:LLP:C4'	6:C:501:SEP:N	2.23	0.93
3:G:156:THR:HG21	9:G:916:HOH:O	1.79	0.82
3:C:233:GLN:HG3	3:C:238:SER:HA	1.62	0.82
6:B:502:SEP:H2	1:A:335:HIS:CD2	2.04	0.76
1:A:290:VAL:HG11	1:A:310:ALA:HA	1.74	0.69
1:F:233:GLN:HG3	1:F:238:SER:HA	1.74	0.69
3:C:193:VAL:HG22	3:C:212:VAL:HG22	1.75	0.69
9:G:914:HOH:O	3:H:156:THR:HG21	1.93	0.68
1:D:193:VAL:HG22	1:D:212:VAL:HG22	1.76	0.68
3:H:156:THR:HG22	3:H:342:ARG:NH1	2.10	0.67
3:B:294:GLU:OE1	3:B:296:GLN:NE2	2.27	0.66

Continued on next page...

*Continued from previous page...*

Atom-1	Atom-2	Interatomic distance (Å)	Clash overlap (Å)
1:F:45:ARG:HH12	1:F:239:LEU:HB3	1.60	0.66
1:A:199:GLN:NE2	7:A:801:PMP:O1P	2.28	0.66
1:A:319:ARG:HE	1:A:323:LYS:HE3	1.62	0.65
1:D:128:LEU:HD21	1:D:135:PRO:HG3	1.78	0.64
3:C:269:LYS:NZ	9:C:603:HOH:O	2.30	0.64
2:E:233:GLN:HG3	2:E:238:SER:HA	1.81	0.62
2:E:75:LEU:HD12	2:E:82:GLN:HE22	1.64	0.62
3:H:156:THR:HG22	3:H:342:ARG:HH12	1.63	0.61
3:H:181:PHE:HD2	3:H:202:VAL:HG21	1.65	0.61
4:D:401:E1U:O3	4:D:401:E1U:N	2.33	0.61
3:G:9:ASN:HB3	3:G:16:LYS:HB2	1.81	0.61
3:G:156:THR:HG1	3:G:179:SER:HG	1.39	0.61
3:B:136:ASP:OD1	3:B:137:PRO:HD2	2.00	0.60
4:F:401:E1U:O3	4:F:401:E1U:N	2.32	0.60
1:F:133:LYS:HB3	1:F:294:GLU:HG3	1.84	0.59
3:B:232:VAL:O	3:B:236:ASN:ND2	2.33	0.59
1:F:82:GLN:HA	1:F:85:ALA:HB3	1.84	0.59
1:D:233:GLN:HG3	1:D:238:SER:HA	1.85	0.59
1:F:143:ASN:HB3	1:F:146:ALA:HB2	1.84	0.58
3:B:140:TRP:HB3	3:B:142:LEU:HD13	1.84	0.58
1:F:174:VAL:HG22	1:F:193:VAL:HB	1.86	0.58
3:G:43:SER:HA	3:H:14:PRO:HD2	1.86	0.57
3:C:202:VAL:HG13	3:C:251:MET:HG3	1.85	0.57
1:A:200:LYS:HE3	7:A:801:PMP:H4A2	1.86	0.57
3:B:134:ILE:HG22	3:B:134:ILE:O	2.04	0.57
3:H:174:VAL:HG22	3:H:193:VAL:HB	1.87	0.57
3:G:79:GLY:N	3:G:200:LLP:OP3	2.38	0.56
3:H:14:PRO:HA	3:H:199:GLN:O	2.06	0.56
2:E:28:GLU:HB2	2:E:32:TYR:HA	1.88	0.55
3:B:90:LEU:HD11	3:B:193:VAL:HG21	1.89	0.55
3:B:50:ALA:O	3:B:54:ASN:ND2	2.30	0.55
2:E:117:LYS:NZ	9:E:502:HOH:O	2.37	0.55
6:B:502:SEP:P	6:B:502:SEP:N	2.80	0.55
3:H:107:TRP:HE1	3:H:156:THR:HB	1.71	0.54
3:C:16:LYS:NZ	3:C:353:ASP:OD2	2.40	0.54
1:D:143:ASN:HB3	1:D:146:ALA:HB2	1.88	0.54
3:B:241:ASN:HD22	7:A:801:PMP:P	2.31	0.54
6:B:502:SEP:H2	1:A:335:HIS:HD2	1.53	0.54
3:B:136:ASP:OD1	3:B:137:PRO:CD	2.55	0.54
3:H:86:VAL:HG11	3:H:174:VAL:HG11	1.89	0.54
2:E:203:GLY:HA2	2:E:254:VAL:HG21	1.89	0.54

*Continued on next page...*

*Continued from previous page...*

Atom-1	Atom-2	Interatomic distance (Å)	Clash overlap (Å)
3:B:241:ASN:ND2	7:A:801:PMP:O3P	2.41	0.54
3:H:202:VAL:HG12	3:H:251:MET:HG3	1.89	0.54
1:D:244:PRO:HB2	1:D:247:SER:HB2	1.88	0.54
6:B:502:SEP:N	6:B:502:SEP:O2P	2.41	0.53
2:E:90:LEU:HD11	2:E:193:VAL:HG21	1.91	0.53
3:B:193:VAL:HG22	3:B:212:VAL:HG13	1.91	0.53
1:A:80:CYS:N	7:A:801:PMP:O2P	2.29	0.53
1:A:277:THR:O	1:A:281:ILE:HG12	2.09	0.53
2:E:290:VAL:HG11	2:E:310:ALA:HA	1.92	0.52
3:B:258:ILE:HG12	3:B:267:MET:HE3	1.91	0.52
1:D:73:ILE:HD12	1:D:75:LEU:HD21	1.90	0.52
2:E:7:VAL:HG21	1:F:36:GLY:HA3	1.91	0.52
3:C:9:ASN:HB3	3:C:16:LYS:HB2	1.92	0.52
1:A:79:GLY:N	7:A:801:PMP:O2P	2.43	0.51
3:C:200:LLP:NZ	6:C:501:SEP:N	2.49	0.51
3:B:14:PRO:HD2	1:A:43:SER:HA	1.93	0.51
1:A:168:VAL:HG21	1:A:173:LEU:HD13	1.93	0.51
6:B:502:SEP:HB2	7:A:801:PMP:HNA2	1.76	0.50
4:D:401:E1U:O7P	3:C:45:ARG:NE	2.44	0.50
3:C:50:ALA:HB2	9:C:607:HOH:O	2.10	0.50
1:A:106:ALA:HB2	1:A:158:HIS:HE1	1.77	0.50
3:H:66:VAL:HG13	3:H:188:VAL:HG11	1.93	0.50
3:B:156:THR:HG1	3:B:200:LLP:HO3	1.54	0.50
3:B:217:LEU:HD13	3:B:231:LYS:HA	1.94	0.50
3:G:241:ASN:HB2	3:H:200:LLP:OP1	2.12	0.50
3:H:319:ARG:NH2	9:H:803:HOH:O	2.40	0.49
2:E:154:ASN:OD1	2:E:299:SER:HB2	2.11	0.49
2:E:131:TYR:HD2	2:E:158:HIS:CE1	2.30	0.49
6:B:502:SEP:P	6:B:502:SEP:H	2.36	0.49
1:F:90:LEU:HD11	1:F:193:VAL:HG21	1.95	0.49
1:A:279:TYR:CZ	1:A:298:ARG:HG2	2.47	0.49
3:H:84:SER:OG	3:H:114:GLU:OE2	2.31	0.49
1:F:136:ASP:O	1:F:139:THR:HG22	2.13	0.49
1:A:244:PRO:HB2	1:A:247:SER:HB2	1.95	0.49
3:G:269:LYS:NZ	9:G:903:HOH:O	2.34	0.48
3:H:274:LYS:HB3	3:H:354:VAL:HG11	1.95	0.48
1:D:36:GLY:HA3	3:C:7:VAL:HG21	1.94	0.48
1:D:319:ARG:HG2	1:D:364:PHE:HE1	1.78	0.48
3:G:91:ILE:HG23	3:G:97:ARG:HD2	1.94	0.48
3:C:148:TYR:HA	3:C:172:VAL:HG23	1.96	0.48
3:B:156:THR:OG1	3:B:200:LLP:O3	2.23	0.48

*Continued on next page...*



*Continued from previous page...*

Atom-1	Atom-2	Interatomic distance (Å)	Clash overlap (Å)
3:B:82:GLN:HA	3:B:85:ALA:HB3	1.96	0.48
6:B:502:SEP:HA	1:A:107:TRP:HZ2	1.78	0.48
3:C:277:THR:O	3:C:281:ILE:HG12	2.14	0.48
3:G:143:ASN:HB3	3:G:146:ALA:HB2	1.96	0.48
2:E:75:LEU:HD12	2:E:82:GLN:NE2	2.28	0.47
3:G:24:GLU:O	3:G:28:GLU:HG2	2.13	0.47
2:E:73:ILE:HD12	2:E:75:LEU:HD21	1.96	0.47
2:E:299:SER:OG	2:E:302:ASN:O	2.32	0.47
1:A:84:SER:OG	1:A:114:GLU:OE2	2.32	0.47
1:A:45:ARG:NH2	1:A:239:LEU:O	2.47	0.47
3:H:116:LYS:HG2	3:H:121:ILE:HB	1.95	0.47
1:F:100:ASP:HB2	1:F:149:VAL:HG22	1.96	0.47
3:H:285:SER:HB2	3:H:288:PHE:HB3	1.96	0.47
3:G:45:ARG:NH1	3:G:239:LEU:HB3	2.30	0.47
3:G:239:LEU:HD23	3:G:243:PRO:HG3	1.95	0.47
7:A:801:PMP:H4A1	7:A:801:PMP:O4P	2.14	0.47
3:G:168:VAL:HG11	3:G:173:LEU:HD13	1.96	0.46
3:H:79:GLY:N	3:H:200:LLP:OP3	2.48	0.46
2:E:86:VAL:HG11	2:E:174:VAL:HG11	1.97	0.46
3:H:294:GLU:OE1	3:H:296:GLN:NE2	2.48	0.46
1:F:45:ARG:NH1	1:F:239:LEU:HB3	2.29	0.46
3:G:199:GLN:HB3	3:G:205:ALA:HA	1.98	0.46
1:D:168:VAL:HG11	1:D:173:LEU:HD13	1.97	0.46
3:C:210:VAL:HG12	3:C:212:VAL:HG23	1.98	0.46
3:C:352:GLU:OE1	9:C:601:HOH:O	2.20	0.46
1:F:306:ARG:NH1	1:F:312:GLY:HA3	2.31	0.46
1:A:288:PHE:O	1:A:308:GLY:N	2.30	0.46
1:F:309:ASN:OD1	1:F:312:GLY:N	2.49	0.46
1:D:7:VAL:HA	1:D:328:ASN:HB3	1.98	0.45
1:D:90:LEU:HD11	1:D:193:VAL:HG21	1.97	0.45
3:G:8:VAL:HG21	3:G:356:LYS:HD2	1.98	0.45
3:C:290:VAL:HG21	3:C:310:ALA:HA	1.98	0.45
3:C:201:ASN:OD1	3:C:346:TYR:HB3	2.16	0.45
3:G:86:VAL:HG11	3:G:174:VAL:HG11	1.97	0.45
3:C:156:THR:OG1	3:C:200:LLP:O3	2.21	0.45
3:B:177:MET:O	3:B:181:PHE:HB2	2.16	0.45
1:F:71:LYS:HB2	1:F:212:VAL:HG13	1.98	0.45
1:A:82:GLN:HA	1:A:85:ALA:HB3	1.98	0.45
1:D:137:PRO:HA	1:D:140:TRP:CD2	2.52	0.45
3:C:276:GLN:O	3:C:280:GLU:HB2	2.17	0.45
1:F:86:VAL:HG22	1:F:87:PRO:HD3	1.99	0.44

*Continued on next page...*

*Continued from previous page...*

Atom-1	Atom-2	Interatomic distance (Å)	Clash overlap (Å)
1:A:86:VAL:HG11	1:A:174:VAL:HG11	1.99	0.44
2:E:88:LEU:HD13	2:E:224:CYS:HA	1.98	0.44
3:G:174:VAL:HG22	3:G:193:VAL:HB	1.99	0.44
1:D:199:GLN:HG2	1:D:200:LYS:HZ3	1.82	0.44
3:H:137:PRO:HA	3:H:140:TRP:CD2	2.53	0.44
5:E:401:U93:OBF	1:F:45:ARG:NE	2.51	0.44
3:B:340:GLY:N	9:B:601:HOH:O	2.50	0.44
3:G:154:ASN:HB3	3:G:179:SER:HB2	2.00	0.44
3:B:73:ILE:HD12	3:B:75:LEU:HD21	1.98	0.44
1:F:153:ALA:HB2	1:F:175:CYS:SG	2.58	0.44
2:E:263:GLY:O	2:E:267:MET:HG2	2.17	0.44
3:B:329:MET:HE2	3:B:356:LYS:HB3	1.99	0.44
3:B:199:GLN:HB3	3:B:205:ALA:HA	2.00	0.44
1:F:70:TYR:OH	1:F:191:PHE:O	2.28	0.44
3:H:239:LEU:HD23	3:H:243:PRO:HG3	1.99	0.44
1:D:213:ARG:HD2	1:D:215:ASP:OD1	2.18	0.43
1:A:193:VAL:HG22	1:A:212:VAL:HG22	2.00	0.43
2:E:345:LEU:HD22	2:E:354:VAL:HG22	2.00	0.43
2:E:222:ARG:O	1:F:117:LYS:HE2	2.18	0.43
2:E:274:LYS:HB3	2:E:354:VAL:HG21	2.00	0.43
3:C:63:LEU:HD21	3:C:259:LYS:HB2	2.01	0.43
3:H:329:MET:HB3	3:H:329:MET:HE2	1.82	0.43
3:C:105:GLY:HA2	3:C:131:TYR:CG	2.53	0.43
3:G:14:PRO:HA	3:G:199:GLN:O	2.19	0.43
3:G:334:GLY:HA2	3:G:342:ARG:HB3	2.01	0.43
3:H:156:THR:O	3:H:342:ARG:NH1	2.38	0.43
3:C:177:MET:HE3	3:C:177:MET:HB3	1.84	0.43
1:A:101:TYR:O	1:A:124:VAL:HG23	2.18	0.43
3:B:43:SER:HA	1:A:14:PRO:HD2	2.00	0.43
3:H:306:ARG:HD2	3:H:317:GLU:OE2	2.19	0.43
2:E:105:GLY:HA2	2:E:131:TYR:CG	2.53	0.42
1:D:226:SER:OG	3:C:114:GLU:OE1	2.28	0.42
1:F:198:ALA:HA	1:F:202:VAL:HG12	1.99	0.42
3:H:181:PHE:CD2	3:H:202:VAL:HG21	2.49	0.42
2:E:14:PRO:HD2	1:F:43:SER:HA	2.01	0.42
1:F:79:GLY:H	4:F:401:E1U:P	2.41	0.42
1:A:316:LEU:HD12	1:A:316:LEU:HA	1.91	0.42
3:C:177:MET:HG3	3:C:194:ILE:HG23	2.01	0.42
2:E:11:GLY:HA2	2:E:12:PRO:HD3	1.82	0.42
3:B:63:LEU:HD21	3:B:259:LYS:HB2	2.02	0.42
3:B:57:GLU:HG3	3:B:72:VAL:HB	2.00	0.42

*Continued on next page...*

*Continued from previous page...*

Atom-1	Atom-2	Interatomic distance (Å)	Clash overlap (Å)
1:F:24:GLU:O	1:F:28:GLU:HG2	2.19	0.42
3:G:74:PHE:CD1	3:G:209:VAL:HG22	2.55	0.42
1:F:137:PRO:HA	1:F:140:TRP:CE2	2.55	0.42
1:F:244:PRO:HB2	1:F:247:SER:HB2	2.02	0.42
1:D:93:LEU:HD23	1:D:219:PHE:CG	2.55	0.42
3:C:86:VAL:HB	3:C:87:PRO:HD3	2.02	0.42
3:C:90:LEU:HD11	3:C:193:VAL:HG21	2.02	0.42
1:F:73:ILE:HD12	1:F:75:LEU:HD21	2.02	0.42
3:C:82:GLN:HA	3:C:85:ALA:HB3	2.02	0.41
1:F:63:LEU:HD21	1:F:259:LYS:HB2	2.01	0.41
2:E:64:LEU:HD23	2:E:64:LEU:HA	1.94	0.41
3:G:200:LLP:OP2	3:H:241:ASN:HB2	2.21	0.41
2:E:210:VAL:HG12	2:E:212:VAL:HG23	2.03	0.41
3:B:153:ALA:HB2	3:B:175:CYS:SG	2.61	0.41
3:B:199:GLN:HG3	1:A:242:THR:HG21	2.03	0.41
3:G:352:GLU:O	3:G:356:LYS:HG3	2.20	0.41
3:H:223:GLU:OE1	3:H:223:GLU:N	2.43	0.41
1:F:63:LEU:HD12	1:F:255:LEU:HD22	2.03	0.41
3:G:14:PRO:HD2	3:H:43:SER:HA	2.02	0.41
3:B:203:GLY:HA2	3:B:254:VAL:HG21	2.02	0.41
3:G:272:SER:O	3:G:276:GLN:HB2	2.20	0.41
1:F:93:LEU:HD11	1:F:216:LEU:HD22	2.02	0.41
1:F:98:CYS:SG	1:F:120:THR:OG1	2.77	0.41
3:C:344:SER:HB3	3:C:346:TYR:CE2	2.56	0.41
1:A:199:GLN:HB3	1:A:205:ALA:HA	2.02	0.41
3:H:64:LEU:HD23	3:H:64:LEU:HA	1.95	0.41
3:H:82:GLN:HA	3:H:85:ALA:HB3	2.03	0.41
3:H:177:MET:O	3:H:181:PHE:HB2	2.21	0.41
3:B:11:GLY:HA2	3:B:12:PRO:HD3	1.88	0.41
3:C:202:VAL:O	3:C:254:VAL:HB	2.21	0.41
3:G:11:GLY:HA2	3:G:12:PRO:HD3	1.84	0.41
3:H:199:GLN:HB3	3:H:205:ALA:HA	2.03	0.41
2:E:63:LEU:HD21	2:E:259:LYS:HB2	2.03	0.40
3:B:36:GLY:HA3	1:A:7:VAL:HG21	2.02	0.40
3:B:135:PRO:HB2	3:B:140:TRP:HE1	1.86	0.40
3:G:241:ASN:O	3:G:243:PRO:HD3	2.21	0.40
3:H:88:LEU:HD13	3:H:224:CYS:HA	2.03	0.40
1:D:124:VAL:HG13	1:D:141:ASN:O	2.21	0.40
3:C:174:VAL:HG22	3:C:193:VAL:HB	2.03	0.40
1:D:82:GLN:HA	1:D:85:ALA:HB3	2.03	0.40
3:H:6:GLN:HB3	3:H:7:VAL:H	1.76	0.40

*Continued on next page...*

Continued from previous page...

Atom-1	Atom-2	Interatomic distance (Å)	Clash overlap (Å)
3:H:107:TRP:NE1	3:H:156:THR:HB	2.35	0.40
1:D:153:ALA:HB2	1:D:175:CYS:SG	2.62	0.40
2:E:128:LEU:HD11	2:E:135:PRO:HD3	2.02	0.40
3:B:137:PRO:HA	3:B:140:TRP:CD2	2.56	0.40
1:A:156:THR:OG1	7:A:801:PMP:H2A1	2.21	0.40

There are no symmetry-related clashes.

## 5.3 Torsion angles [i](#)

### 5.3.1 Protein backbone [i](#)

In the following table, the Percentiles column shows the percent Ramachandran outliers of the chain as a percentile score with respect to all X-ray entries followed by that with respect to entries of similar resolution.

The Analysed column shows the number of residues for which the backbone conformation was analysed, and the total number of residues.

Mol	Chain	Analysed	Favoured	Allowed	Outliers	Percentiles	
1	A	363/365 (100%)	348 (96%)	14 (4%)	1 (0%)	41	70
1	D	363/365 (100%)	352 (97%)	10 (3%)	1 (0%)	41	70
1	F	363/365 (100%)	345 (95%)	16 (4%)	2 (1%)	25	54
2	E	361/393 (92%)	348 (96%)	13 (4%)	0	100	100
3	B	362/365 (99%)	349 (96%)	13 (4%)	0	100	100
3	C	362/365 (99%)	351 (97%)	11 (3%)	0	100	100
3	G	362/365 (99%)	352 (97%)	9 (2%)	1 (0%)	41	70
3	H	362/365 (99%)	351 (97%)	10 (3%)	1 (0%)	41	70
All	All	2898/2948 (98%)	2796 (96%)	96 (3%)	6 (0%)	47	76

All (6) Ramachandran outliers are listed below:

Mol	Chain	Res	Type
3	H	201	ASN
1	F	7	VAL
1	F	202	VAL
3	G	202	VAL
1	A	202	VAL

Continued on next page...

*Continued from previous page...*

Mol	Chain	Res	Type
1	D	244	PRO

### 5.3.2 Protein sidechains [i](#)

In the following table, the Percentiles column shows the percent sidechain outliers of the chain as a percentile score with respect to all X-ray entries followed by that with respect to entries of similar resolution.

The Analysed column shows the number of residues for which the sidechain conformation was analysed, and the total number of residues.

Mol	Chain	Analysed	Rotameric	Outliers	Percentiles	
1	A	306/306 (100%)	303 (99%)	3 (1%)	76	91
1	D	306/306 (100%)	304 (99%)	2 (1%)	84	94
1	F	306/306 (100%)	302 (99%)	4 (1%)	69	89
2	E	306/329 (93%)	303 (99%)	3 (1%)	76	91
3	B	305/305 (100%)	303 (99%)	2 (1%)	84	94
3	C	305/305 (100%)	302 (99%)	3 (1%)	76	91
3	G	305/305 (100%)	303 (99%)	2 (1%)	84	94
3	H	305/305 (100%)	305 (100%)	0	100	100
All	All	2444/2467 (99%)	2425 (99%)	19 (1%)	81	93

All (19) residues with a non-rotameric sidechain are listed below:

Mol	Chain	Res	Type
1	D	127	LYS
1	D	200	LYS
2	E	5	ARG
2	E	296	GLN
2	E	355	GLN
3	C	172	VAL
3	C	202	VAL
3	C	365	LEU
3	B	134	ILE
3	B	199	GLN
1	F	6	GLN
1	F	128	LEU
1	F	200	LYS
1	F	202	VAL

*Continued on next page...*

*Continued from previous page...*

Mol	Chain	Res	Type
1	A	20	SER
1	A	200	LYS
1	A	298	ARG
3	G	139	THR
3	G	256	GLU

Sometimes sidechains can be flipped to improve hydrogen bonding and reduce clashes. There are no such sidechains identified.

### 5.3.3 RNA [i](#)

There are no RNA molecules in this entry.

## 5.4 Non-standard residues in protein, DNA, RNA chains [i](#)

4 non-standard protein/DNA/RNA residues are modelled in this entry.

In the following table, the Counts columns list the number of bonds (or angles) for which Mogul statistics could be retrieved, the number of bonds (or angles) that are observed in the model and the number of bonds (or angles) that are defined in the Chemical Component Dictionary. The Link column lists molecule types, if any, to which the group is linked. The Z score for a bond length (or angle) is the number of standard deviations the observed value is removed from the expected value. A bond length (or angle) with  $|Z| > 2$  is considered an outlier worth inspection. RMSZ is the root-mean-square of all Z scores of the bond lengths (or angles).

Mol	Type	Chain	Res	Link	Bond lengths			Bond angles		
					Counts	RMSZ	# Z  > 2	Counts	RMSZ	# Z  > 2
3	LLP	B	200	3	23,24,25	2.71	8 (34%)	25,32,34	1.32	3 (12%)
3	LLP	H	200	3	23,24,25	2.63	6 (26%)	25,32,34	1.18	1 (4%)
3	LLP	C	200	3	23,24,25	0.92	1 (4%)	25,32,34	0.62	0
3	LLP	G	200	3	23,24,25	0.99	3 (13%)	25,32,34	0.65	0

In the following table, the Chirals column lists the number of chiral outliers, the number of chiral centers analysed, the number of these observed in the model and the number defined in the Chemical Component Dictionary. Similar counts are reported in the Torsion and Rings columns. '-' means no outliers of that kind were identified.

Mol	Type	Chain	Res	Link	Chirals	Torsions	Rings
3	LLP	B	200	3	-	11/16/17/19	0/1/1/1
3	LLP	H	200	3	-	9/16/17/19	0/1/1/1

*Continued on next page...*

*Continued from previous page...*

Mol	Type	Chain	Res	Link	Chirals	Torsions	Rings
3	LLP	C	200	3	-	10/16/17/19	0/1/1/1
3	LLP	G	200	3	-	7/16/17/19	0/1/1/1

All (18) bond length outliers are listed below:

Mol	Chain	Res	Type	Atoms	Z	Observed(Å)	Ideal(Å)
3	H	200	LLP	C4-C4'	8.25	1.62	1.46
3	B	200	LLP	C4-C4'	8.24	1.62	1.46
3	B	200	LLP	C4-C5	-5.16	1.35	1.42
3	B	200	LLP	C4'-NZ	5.01	1.44	1.27
3	H	200	LLP	C4'-NZ	4.97	1.43	1.27
3	H	200	LLP	C4-C5	-4.62	1.36	1.42
3	B	200	LLP	C2'-C2	3.27	1.55	1.50
3	H	200	LLP	C2'-C2	3.24	1.55	1.50
3	B	200	LLP	C6-N1	2.96	1.40	1.34
3	H	200	LLP	C6-N1	2.94	1.40	1.34
3	C	200	LLP	C3-C2	-2.66	1.38	1.40
3	G	200	LLP	C3-C2	-2.29	1.38	1.40
3	G	200	LLP	P-OP3	-2.24	1.46	1.54
3	G	200	LLP	P-OP2	-2.21	1.46	1.54
3	H	200	LLP	C5'-C5	2.17	1.56	1.50
3	B	200	LLP	C4-C3	-2.09	1.37	1.40
3	B	200	LLP	CB-CA	-2.08	1.50	1.53
3	B	200	LLP	C5'-C5	2.03	1.56	1.50

All (4) bond angle outliers are listed below:

Mol	Chain	Res	Type	Atoms	Z	Observed(°)	Ideal(°)
3	B	200	LLP	CE-NZ-C4'	-2.82	110.23	118.90
3	H	200	LLP	C4-C4'-NZ	-2.80	111.46	124.31
3	B	200	LLP	C4-C4'-NZ	-2.64	112.20	124.31
3	B	200	LLP	C5-C6-N1	-2.20	120.16	123.82

There are no chirality outliers.

All (37) torsion outliers are listed below:

Mol	Chain	Res	Type	Atoms
3	C	200	LLP	C4-C4'-NZ-CE
3	C	200	LLP	C5'-OP4-P-OP1
3	C	200	LLP	C5'-OP4-P-OP2
3	C	200	LLP	C5'-OP4-P-OP3

*Continued on next page...*

*Continued from previous page...*

Mol	Chain	Res	Type	Atoms
3	C	200	LLP	C-CA-CB-CG
3	C	200	LLP	CG-CD-CE-NZ
3	B	200	LLP	C3-C4-C4'-NZ
3	B	200	LLP	C4-C4'-NZ-CE
3	B	200	LLP	C5'-OP4-P-OP1
3	B	200	LLP	C5'-OP4-P-OP2
3	B	200	LLP	C5'-OP4-P-OP3
3	B	200	LLP	C-CA-CB-CG
3	G	200	LLP	C5-C4-C4'-NZ
3	G	200	LLP	C4-C4'-NZ-CE
3	G	200	LLP	C5'-OP4-P-OP1
3	G	200	LLP	C5'-OP4-P-OP2
3	G	200	LLP	C5'-OP4-P-OP3
3	H	200	LLP	C4-C4'-NZ-CE
3	H	200	LLP	C5'-OP4-P-OP2
3	H	200	LLP	C5'-OP4-P-OP3
3	H	200	LLP	O-C-CA-CB
3	B	200	LLP	CG-CD-CE-NZ
3	G	200	LLP	CG-CD-CE-NZ
3	B	200	LLP	CA-CB-CG-CD
3	C	200	LLP	C3-C4-C4'-NZ
3	H	200	LLP	C3-C4-C4'-NZ
3	C	200	LLP	CA-CB-CG-CD
3	H	200	LLP	CA-CB-CG-CD
3	G	200	LLP	C3-C4-C4'-NZ
3	C	200	LLP	CE-CD-CG-CB
3	H	200	LLP	C5-C4-C4'-NZ
3	B	200	LLP	CE-CD-CG-CB
3	H	200	LLP	CG-CD-CE-NZ
3	C	200	LLP	CD-CE-NZ-C4'
3	B	200	LLP	CD-CE-NZ-C4'
3	B	200	LLP	C6-C5-C5'-OP4
3	H	200	LLP	C5'-OP4-P-OP1

There are no ring outliers.

4 monomers are involved in 12 short contacts:

Mol	Chain	Res	Type	Clashes	Symm-Clashes
3	B	200	LLP	2	0
3	H	200	LLP	2	0
3	C	200	LLP	6	0
3	G	200	LLP	2	0



## 5.5 Carbohydrates [i](#)

There are no monosaccharides in this entry.

## 5.6 Ligand geometry [i](#)

9 ligands are modelled in this entry.

In the following table, the Counts columns list the number of bonds (or angles) for which Mogul statistics could be retrieved, the number of bonds (or angles) that are observed in the model and the number of bonds (or angles) that are defined in the Chemical Component Dictionary. The Link column lists molecule types, if any, to which the group is linked. The Z score for a bond length (or angle) is the number of standard deviations the observed value is removed from the expected value. A bond length (or angle) with  $|Z| > 2$  is considered an outlier worth inspection. RMSZ is the root-mean-square of all Z scores of the bond lengths (or angles).

Mol	Type	Chain	Res	Link	Bond lengths			Bond angles		
					Counts	RMSZ	# Z  > 2	Counts	RMSZ	# Z  > 2
8	SO4	G	801	-	4,4,4	0.13	0	6,6,6	0.07	0
8	SO4	H	701	-	4,4,4	0.13	0	6,6,6	0.12	0
4	E1U	D	401	-	26,26,26	<b>2.97</b>	<b>6 (23%)</b>	34,38,38	<b>2.02</b>	<b>8 (23%)</b>
6	SEP	B	501	-	9,10,10	1.59	<b>1 (11%)</b>	12,14,14	1.79	<b>4 (33%)</b>
6	SEP	C	501	-	9,10,10	1.23	<b>1 (11%)</b>	12,14,14	0.90	0
5	U93	E	401	2	33,35,35	1.93	<b>6 (18%)</b>	35,49,49	1.46	<b>7 (20%)</b>
7	PMP	A	801	-	16,16,16	1.10	<b>3 (18%)</b>	21,23,23	0.82	0
4	E1U	F	401	-	26,26,26	<b>3.53</b>	<b>15 (57%)</b>	34,38,38	<b>2.21</b>	<b>9 (26%)</b>
6	SEP	B	502	-	9,10,10	1.14	<b>1 (11%)</b>	12,14,14	1.01	<b>1 (8%)</b>

In the following table, the Chirals column lists the number of chiral outliers, the number of chiral centers analysed, the number of these observed in the model and the number defined in the Chemical Component Dictionary. Similar counts are reported in the Torsion and Rings columns. '-' means no outliers of that kind were identified.

Mol	Type	Chain	Res	Link	Chirals	Torsions	Rings
4	E1U	D	401	-	-	<b>4/21/21/21</b>	0/1/1/1
6	SEP	B	501	-	-	<b>7/10/10/10</b>	-
6	SEP	C	501	-	-	<b>5/10/10/10</b>	-
5	U93	E	401	2	-	<b>11/32/34/34</b>	0/1/1/1
7	PMP	A	801	-	-	<b>7/8/8/8</b>	0/1/1/1
4	E1U	F	401	-	-	<b>7/21/21/21</b>	0/1/1/1
6	SEP	B	502	-	-	<b>4/10/10/10</b>	-

All (33) bond length outliers are listed below:

Mol	Chain	Res	Type	Atoms	Z	Observed(Å)	Ideal(Å)
4	D	401	E1U	C4A-N	11.02	1.48	1.27
4	F	401	E1U	C4A-N	10.78	1.47	1.27
4	F	401	E1U	C2A-C2	-7.32	1.38	1.50
5	E	401	U93	CAQ-CAP	-7.18	1.38	1.50
4	D	401	E1U	C2A-C2	-6.73	1.39	1.50
4	F	401	E1U	P-O4P	-4.37	1.46	1.60
4	D	401	E1U	C5A-C5	-4.13	1.39	1.50
4	F	401	E1U	C5A-C5	-4.11	1.39	1.50
4	F	401	E1U	C4-C4A	-3.74	1.39	1.46
4	F	401	E1U	P-O2P	-3.59	1.41	1.54
5	E	401	U93	CAU-NAI	3.55	1.50	1.45
4	F	401	E1U	C3-C2	-3.52	1.37	1.40
5	E	401	U93	CAW-CAV	-3.50	1.41	1.50
6	B	501	SEP	P-O1P	3.36	1.61	1.50
4	F	401	E1U	P2-O7P	-3.34	1.42	1.54
5	E	401	U93	CAX-NAO	3.25	1.41	1.34
4	F	401	E1U	P-O3P	-3.23	1.42	1.54
4	F	401	E1U	P2-O5P	-3.08	1.43	1.54
4	D	401	E1U	C4-C4A	-2.86	1.41	1.46
4	F	401	E1U	P-O1P	-2.81	1.41	1.50
4	F	401	E1U	C6-N1	2.81	1.40	1.34
4	D	401	E1U	C6-N1	2.70	1.40	1.34
4	F	401	E1U	P2-OG	-2.68	1.51	1.60
4	F	401	E1U	C4-C3	-2.39	1.37	1.40
7	A	801	PMP	P-O2P	-2.33	1.45	1.54
5	E	401	U93	CAR-CAP	-2.30	1.38	1.40
4	F	401	E1U	P2-O6P	-2.24	1.43	1.50
7	A	801	PMP	P-O3P	-2.19	1.46	1.54
4	D	401	E1U	P2-O7P	-2.17	1.46	1.54
6	C	501	SEP	OXT-C	-2.17	1.23	1.30
6	B	502	SEP	OXT-C	-2.16	1.23	1.30
7	A	801	PMP	C3-C2	-2.14	1.38	1.40
5	E	401	U93	PBE-OBG	-2.01	1.47	1.54

All (29) bond angle outliers are listed below:

Mol	Chain	Res	Type	Atoms	Z	Observed(°)	Ideal(°)
4	F	401	E1U	C4-C3-C2	7.31	124.71	120.19
4	D	401	E1U	C4-C4A-N	-5.69	110.37	123.01
4	F	401	E1U	C4-C4A-N	-5.32	111.18	123.01
4	D	401	E1U	C4-C3-C2	4.65	123.06	120.19
4	D	401	E1U	O7P-P2-OG	-4.12	95.77	106.73

*Continued on next page...*

Continued from previous page...

Mol	Chain	Res	Type	Atoms	Z	Observed(°)	Ideal(°)
6	B	501	SEP	OG-CB-CA	3.49	111.10	108.06
4	F	401	E1U	O4P-C5A-C5	3.33	115.70	109.35
4	D	401	E1U	O5P-P2-OG	-3.30	97.95	106.73
6	B	501	SEP	P-OG-CB	-3.10	109.76	118.30
4	D	401	E1U	OG-P2-O6P	-3.03	97.96	106.47
4	F	401	E1U	O4P-P-O1P	-2.95	98.20	106.47
4	D	401	E1U	O5P-P2-O7P	2.92	118.78	107.64
5	E	401	U93	CAG-CAH-NAI	2.81	122.49	112.02
4	F	401	E1U	CA-N-C4A	-2.72	113.38	117.31
4	F	401	E1U	O7P-P2-OG	-2.70	99.54	106.73
5	E	401	U93	CAR-CAT-CAV	-2.67	116.15	119.18
6	B	501	SEP	OXT-C-O	-2.62	118.15	124.09
4	D	401	E1U	O3P-P-O4P	-2.55	99.94	106.73
5	E	401	U93	CAG-CAF-CB	-2.55	104.59	113.62
4	F	401	E1U	C2A-C2-N1	2.45	122.46	117.67
4	F	401	E1U	O2P-P-O3P	2.39	116.76	107.64
5	E	401	U93	OBG-PBE-OB	-2.35	100.48	106.73
4	D	401	E1U	O5P-P2-O6P	2.30	119.68	110.68
5	E	401	U93	OAM-PAJ-OAL	2.25	116.23	107.64
5	E	401	U93	OAN-CAW-CAV	2.24	113.62	109.35
6	B	501	SEP	OXT-C-CA	2.21	120.90	113.38
4	F	401	E1U	CB-CA-N	2.17	112.60	109.04
5	E	401	U93	OAL-PAJ-OAN	-2.07	101.23	106.73
6	B	502	SEP	O3P-P-O2P	2.02	115.37	107.64

There are no chirality outliers.

All (45) torsion outliers are listed below:

Mol	Chain	Res	Type	Atoms
4	D	401	E1U	CB-CA-N-C4A
4	D	401	E1U	C-CA-N-C4A
4	F	401	E1U	CB-OG-P2-O7P
4	F	401	E1U	CB-CA-N-C4A
4	F	401	E1U	C-CA-N-C4A
5	E	401	U93	CAT-CAU-NAI-CAH
5	E	401	U93	CAW-OAN-PAJ-OAL
5	E	401	U93	CAW-OAN-PAJ-OAM
5	E	401	U93	CBC-OBP-PBE-OB
5	E	401	U93	CBC-OBP-PBE-OBG
6	C	501	SEP	CB-OG-P-O2P
6	C	501	SEP	CB-OG-P-O3P
6	B	501	SEP	N-CA-CB-OG

Continued on next page...

*Continued from previous page...*

Mol	Chain	Res	Type	Atoms
6	B	501	SEP	C-CA-CB-OG
6	B	501	SEP	CB-OG-P-O3P
6	B	502	SEP	CB-OG-P-O3P
7	A	801	PMP	C3-C4-C4A-N4A
7	A	801	PMP	C5-C4-C4A-N4A
7	A	801	PMP	C4-C5-C5A-O4P
7	A	801	PMP	C6-C5-C5A-O4P
7	A	801	PMP	C5A-O4P-P-O1P
7	A	801	PMP	C5A-O4P-P-O2P
7	A	801	PMP	C5A-O4P-P-O3P
4	F	401	E1U	C4-C4A-N-CA
6	B	501	SEP	OXT-C-CA-N
6	C	501	SEP	O-C-CA-CB
6	B	502	SEP	O-C-CA-CB
5	E	401	U93	CAG-CAH-NAI-CAU
4	D	401	E1U	CB-OG-P2-O6P
4	F	401	E1U	CB-OG-P2-O6P
5	E	401	U93	CAW-OAN-PAJ-OAK
5	E	401	U93	CBC-OB-D-PBE-OBH
6	C	501	SEP	CB-OG-P-O1P
5	E	401	U93	CAR-CAT-CAU-NAI
5	E	401	U93	CBA-CAZ-NAY-CAU
6	B	501	SEP	O-C-CA-N
4	D	401	E1U	C5A-O4P-P-O2P
4	F	401	E1U	CB-OG-P2-O5P
6	B	501	SEP	CA-CB-OG-P
6	C	501	SEP	OXT-C-CA-CB
6	B	502	SEP	OXT-C-CA-CB
4	F	401	E1U	C3-C4-C4A-N
6	B	502	SEP	CA-CB-OG-P
6	B	501	SEP	OXT-C-CA-CB
5	E	401	U93	CAV-CAT-CAU-NAI

There are no ring outliers.

6 monomers are involved in 25 short contacts:

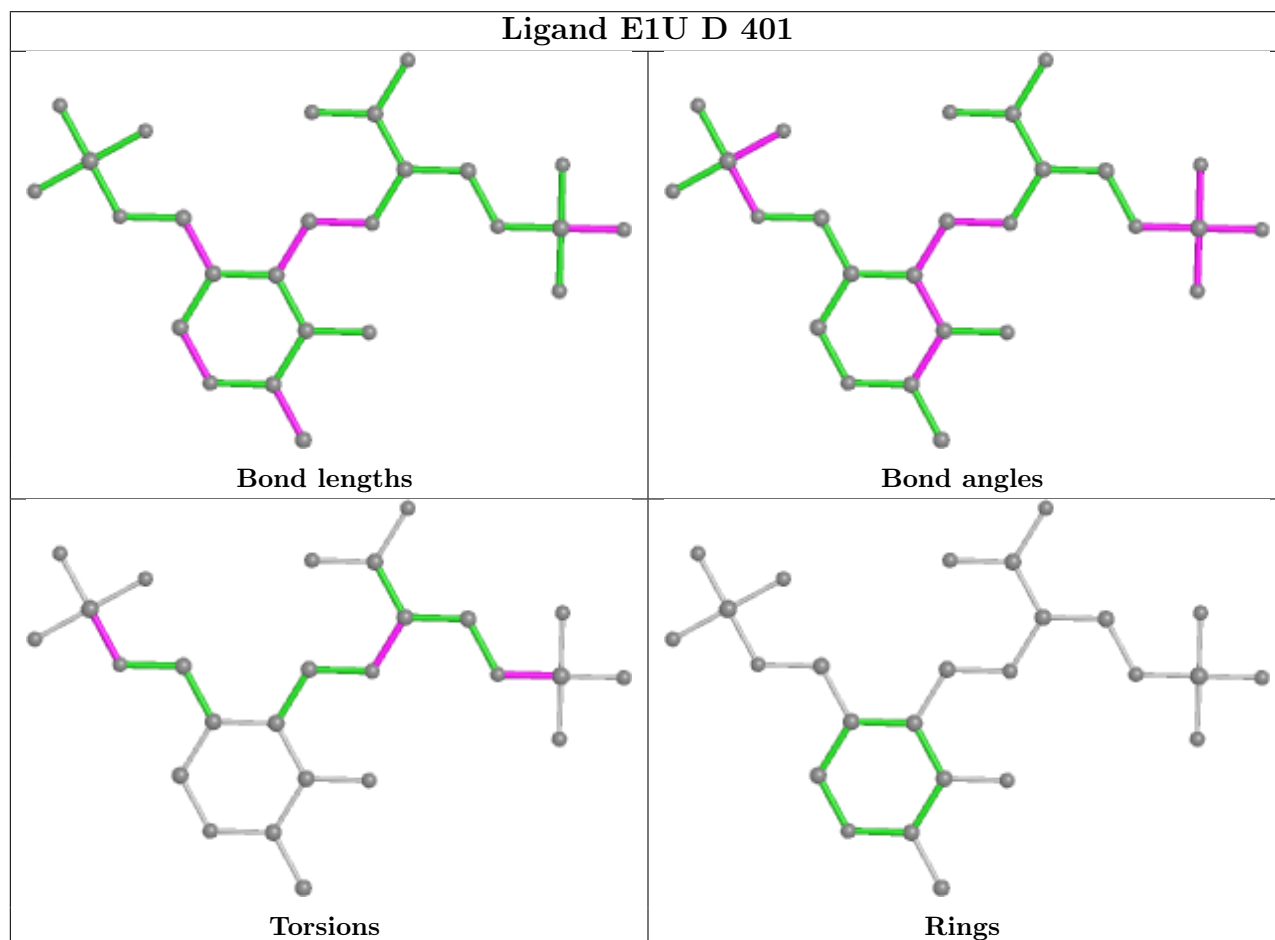
Mol	Chain	Res	Type	Clashes	Symm-Clashes
4	D	401	E1U	2	0
6	C	501	SEP	5	0
5	E	401	U93	1	0
7	A	801	PMP	9	0
4	F	401	E1U	2	0

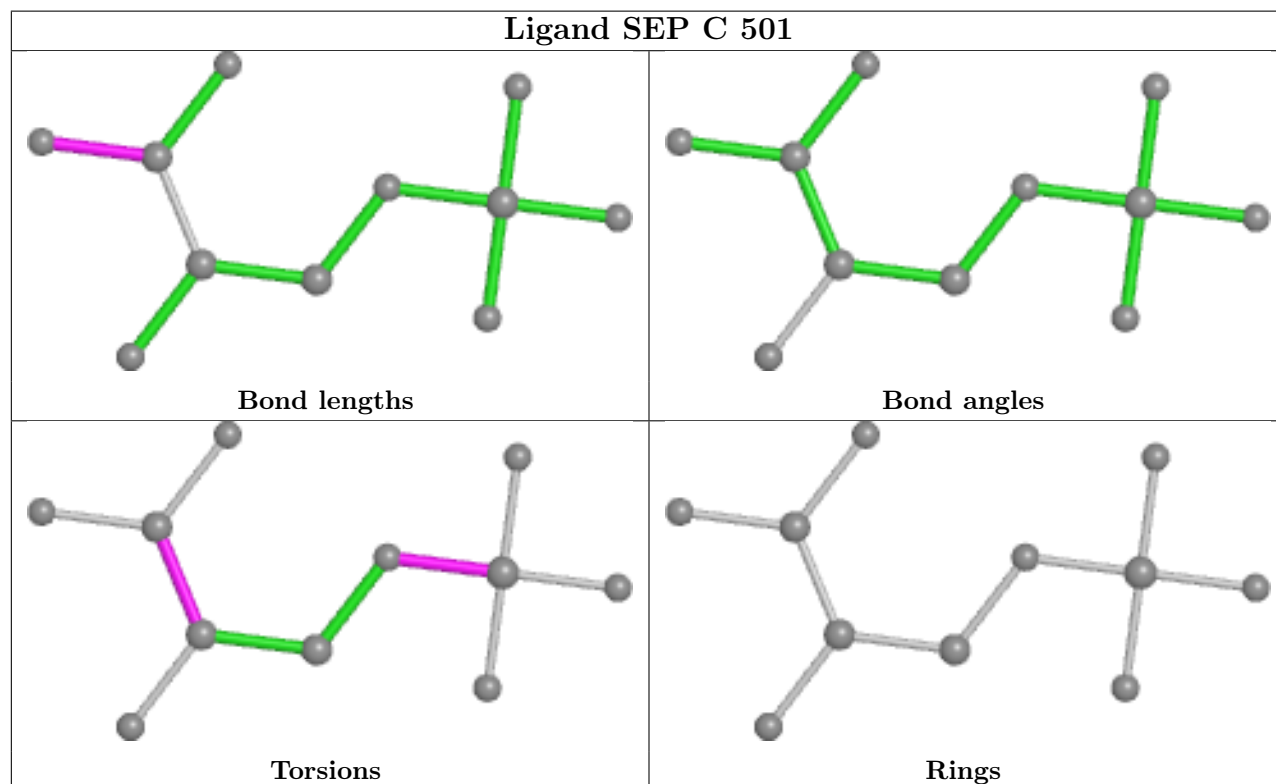
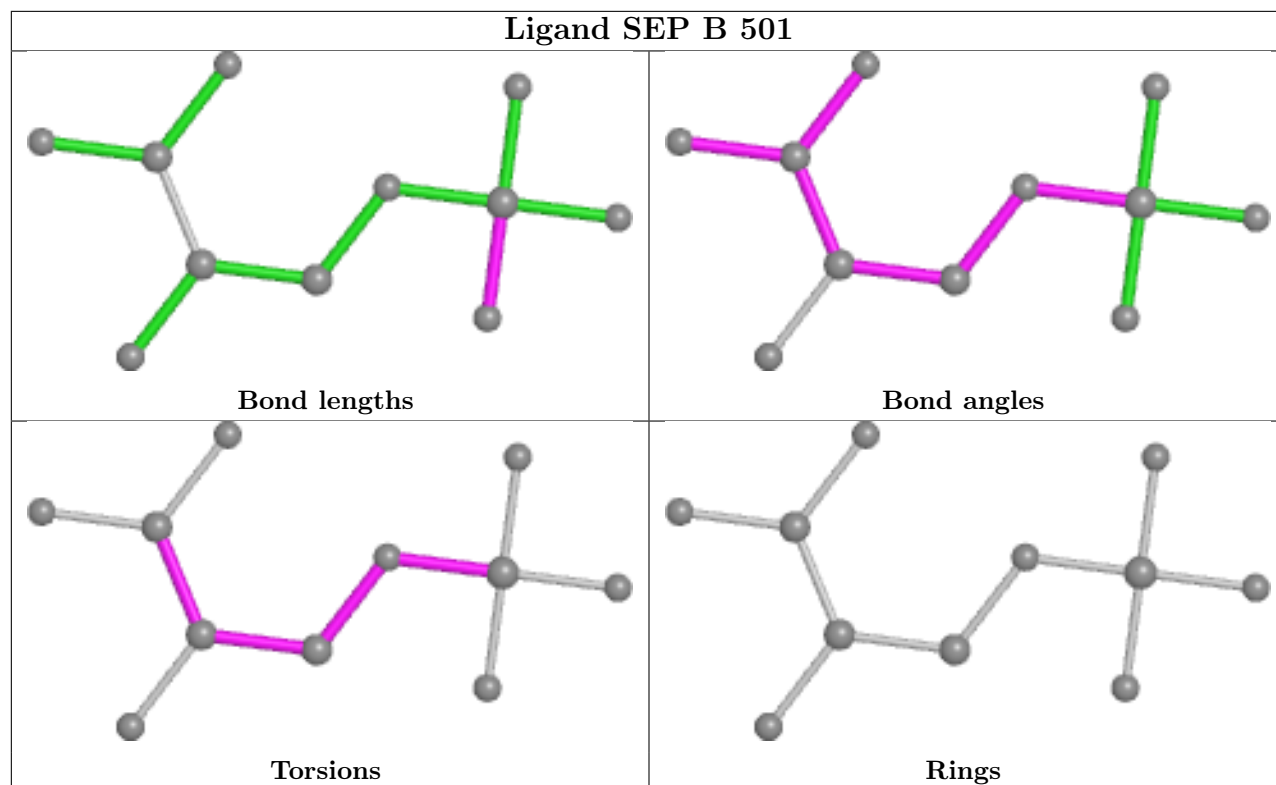
*Continued on next page...*

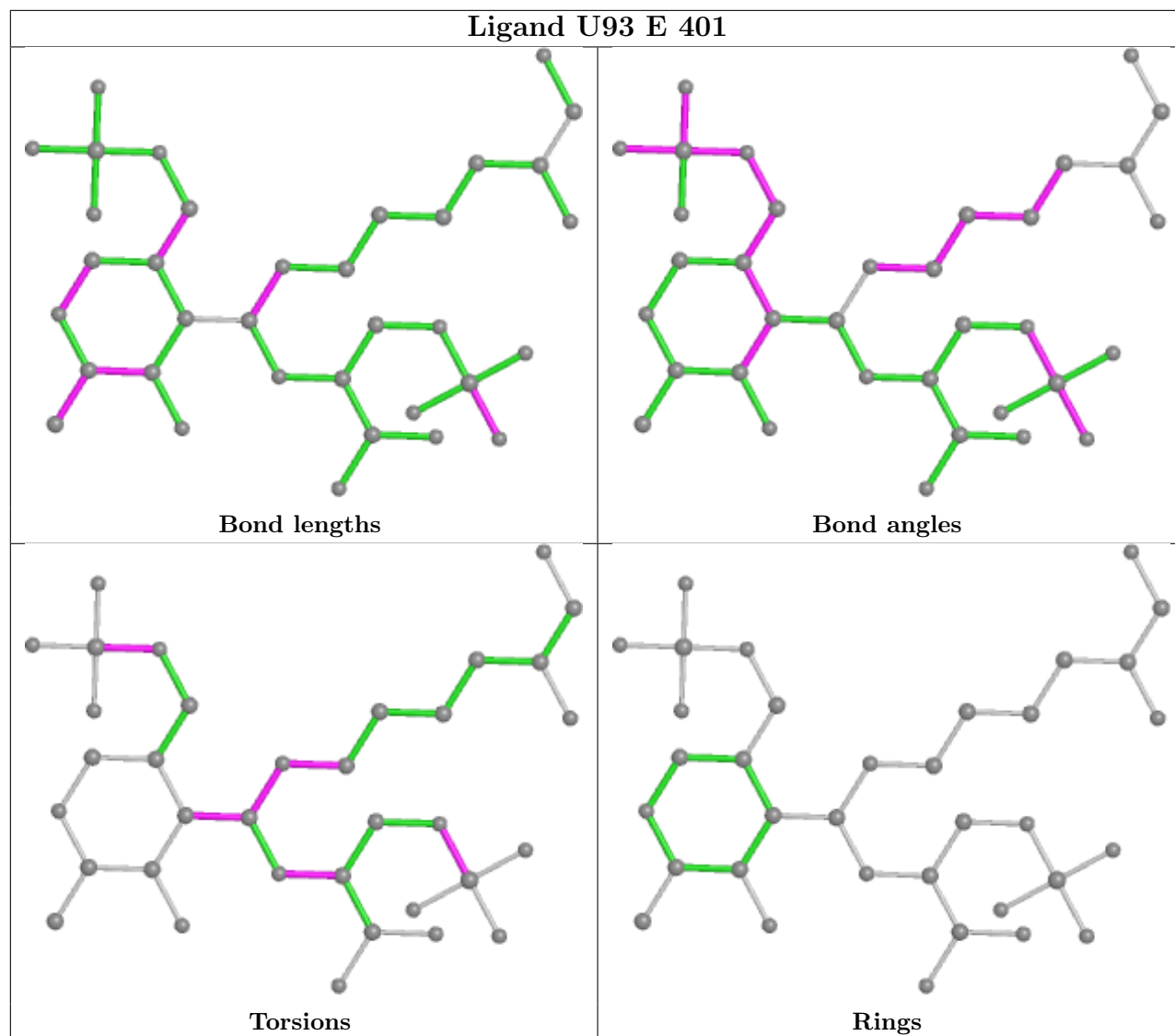
Continued from previous page...

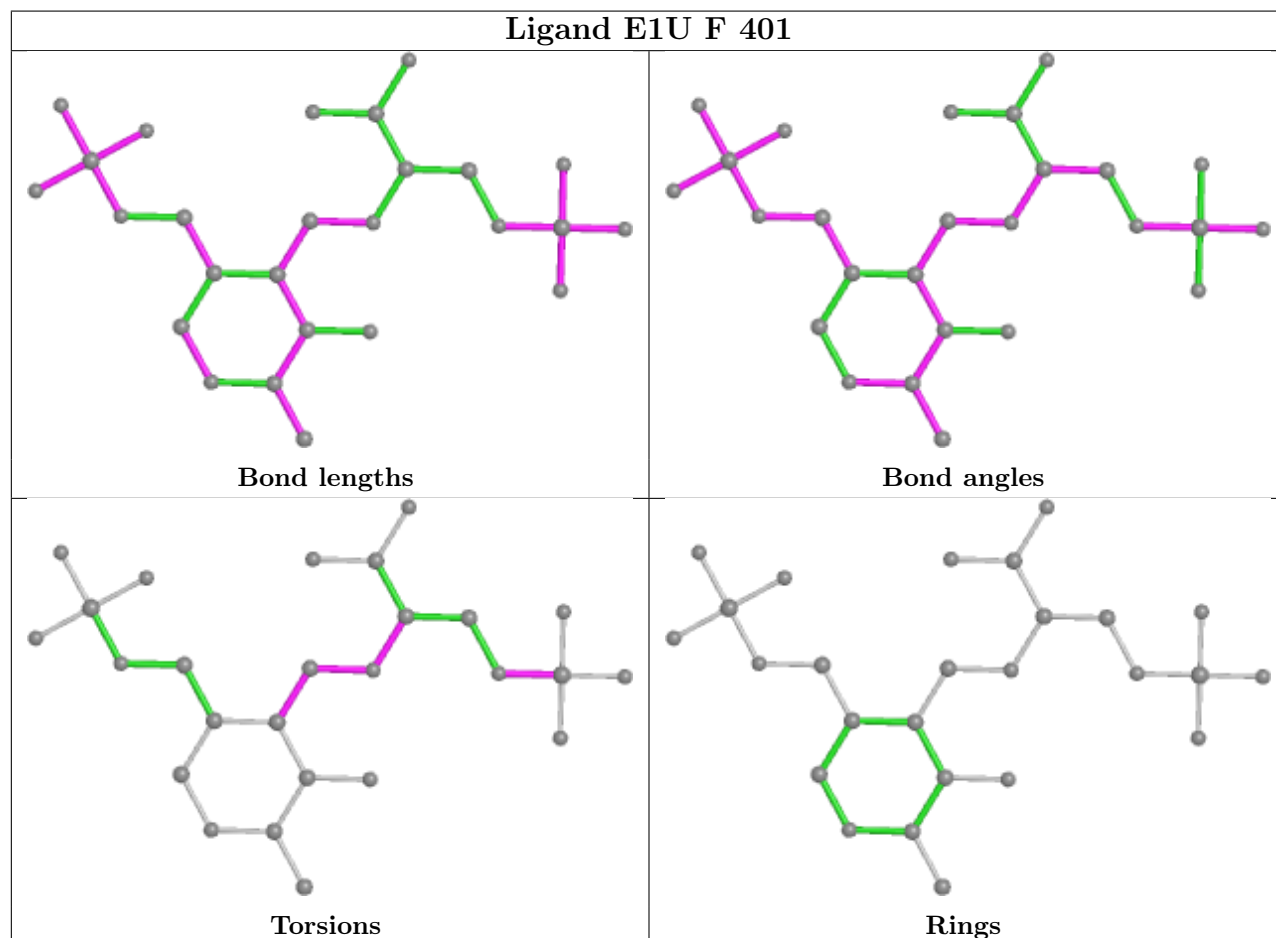
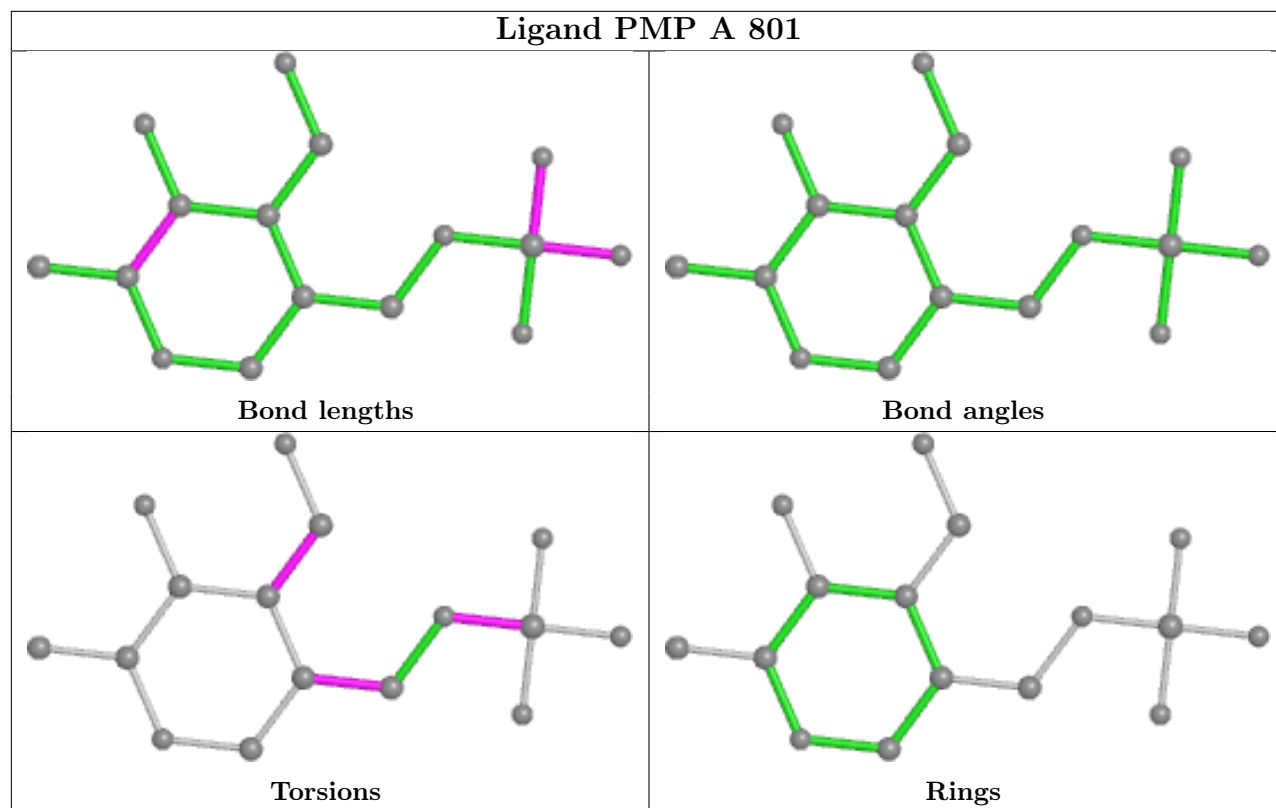
Mol	Chain	Res	Type	Clashes	Symm-Clashes
6	B	502	SEP	7	0

The following is a two-dimensional graphical depiction of Mogul quality analysis of bond lengths, bond angles, torsion angles, and ring geometry for all instances of the Ligand of Interest. In addition, ligands with molecular weight > 250 and outliers as shown on the validation Tables will also be included. For torsion angles, if less than 5% of the Mogul distribution of torsion angles is within 10 degrees of the torsion angle in question, then that torsion angle is considered an outlier. Any bond that is central to one or more torsion angles identified as an outlier by Mogul will be highlighted in the graph. For rings, the root-mean-square deviation (RMSD) between the ring in question and similar rings identified by Mogul is calculated over all ring torsion angles. If the average RMSD is greater than 60 degrees and the minimal RMSD between the ring in question and any Mogul-identified rings is also greater than 60 degrees, then that ring is considered an outlier. The outliers are highlighted in purple. The color gray indicates Mogul did not find sufficient equivalents in the CSD to analyse the geometry.

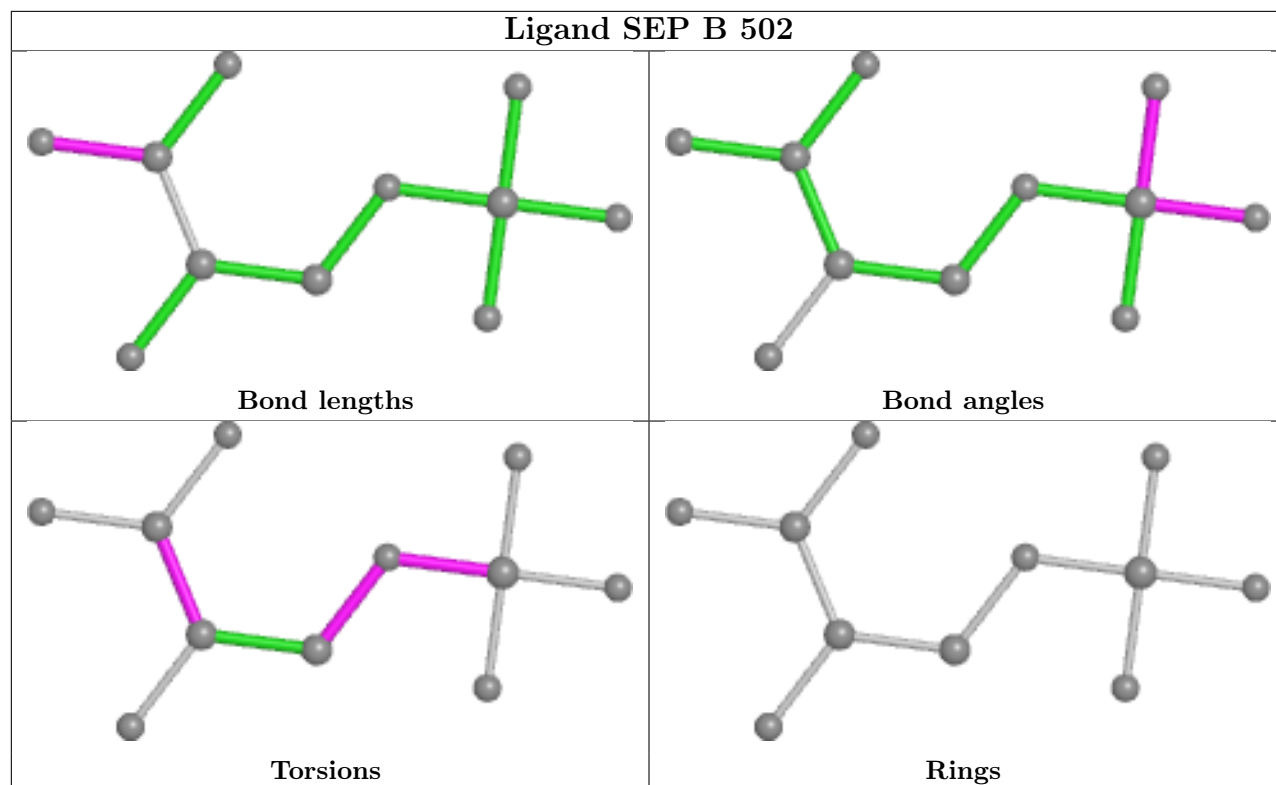












## 5.7 Other polymers [i](#)

There are no such residues in this entry.

## 5.8 Polymer linkage issues [i](#)

There are no chain breaks in this entry.

## 6 Fit of model and data

### 6.1 Protein, DNA and RNA chains

In the following table, the column labelled ‘#RSRZ > 2’ contains the number (and percentage) of RSRZ outliers, followed by percent RSRZ outliers for the chain as percentile scores relative to all X-ray entries and entries of similar resolution. The OWAB column contains the minimum, median, 95<sup>th</sup> percentile and maximum values of the occupancy-weighted average B-factor per residue. The column labelled ‘Q < 0.9’ lists the number of (and percentage) of residues with an average occupancy less than 0.9.

Mol	Chain	Analysed	<RSRZ>	#RSRZ>2	OWAB(Å <sup>2</sup> )	Q<0.9
1	A	365/365 (100%)	0.01	3 (0%) 86 84	30, 50, 79, 98	0
1	D	365/365 (100%)	-0.23	0 100 100	17, 35, 58, 77	0
1	F	365/365 (100%)	-0.06	3 (0%) 86 84	23, 41, 72, 113	0
2	E	365/393 (92%)	-0.19	1 (0%) 94 94	18, 36, 61, 87	0
3	B	364/365 (99%)	0.06	6 (1%) 72 69	29, 45, 67, 103	0
3	C	364/365 (99%)	-0.09	2 (0%) 91 90	20, 42, 77, 123	0
3	G	364/365 (99%)	0.01	5 (1%) 75 73	28, 51, 79, 120	0
3	H	364/365 (99%)	-0.05	3 (0%) 86 84	27, 51, 82, 112	0
All	All	2916/2948 (98%)	-0.07	23 (0%) 86 84	17, 44, 75, 123	0

All (23) RSRZ outliers are listed below:

Mol	Chain	Res	Type	RSRZ
3	B	128	LEU	4.9
3	C	124	VAL	4.3
3	G	370	LEU	4.0
1	F	370	LEU	3.9
1	A	370	LEU	3.8
3	C	370	LEU	3.4
1	F	124	VAL	3.1
3	G	127	LYS	2.9
3	G	336	ARG	2.7
3	H	307	ILE	2.7
2	E	370	LEU	2.4
1	A	140	TRP	2.3
3	G	129	GLY	2.3
3	G	124	VAL	2.3
3	B	125	HIS	2.2
1	A	319	ARG	2.2

*Continued on next page...*

*Continued from previous page...*

Mol	Chain	Res	Type	RSRZ
3	B	80	CYS	2.2
3	B	308	GLY	2.1
3	H	125	HIS	2.1
3	B	127	LYS	2.1
3	B	336	ARG	2.1
1	F	316	LEU	2.0
3	H	146	ALA	2.0

## 6.2 Non-standard residues in protein, DNA, RNA chains [i](#)

In the following table, the Atoms column lists the number of modelled atoms in the group and the number defined in the chemical component dictionary. The B-factors column lists the minimum, median, 95<sup>th</sup> percentile and maximum values of B factors of atoms in the group. The column labelled 'Q< 0.9' lists the number of atoms with occupancy less than 0.9.

Mol	Type	Chain	Res	Atoms	RSCC	RSR	B-factors(Å <sup>2</sup> )	Q<0.9
3	LLP	H	200	24/25	0.94	0.20	37,56,69,84	0
3	LLP	G	200	24/25	0.95	0.18	42,52,58,58	0
3	LLP	C	200	24/25	0.97	0.17	32,41,49,62	0
3	LLP	B	200	24/25	0.97	0.17	39,45,52,56	0

## 6.3 Carbohydrates [i](#)

There are no monosaccharides in this entry.

## 6.4 Ligands [i](#)

In the following table, the Atoms column lists the number of modelled atoms in the group and the number defined in the chemical component dictionary. The B-factors column lists the minimum, median, 95<sup>th</sup> percentile and maximum values of B factors of atoms in the group. The column labelled 'Q< 0.9' lists the number of atoms with occupancy less than 0.9.

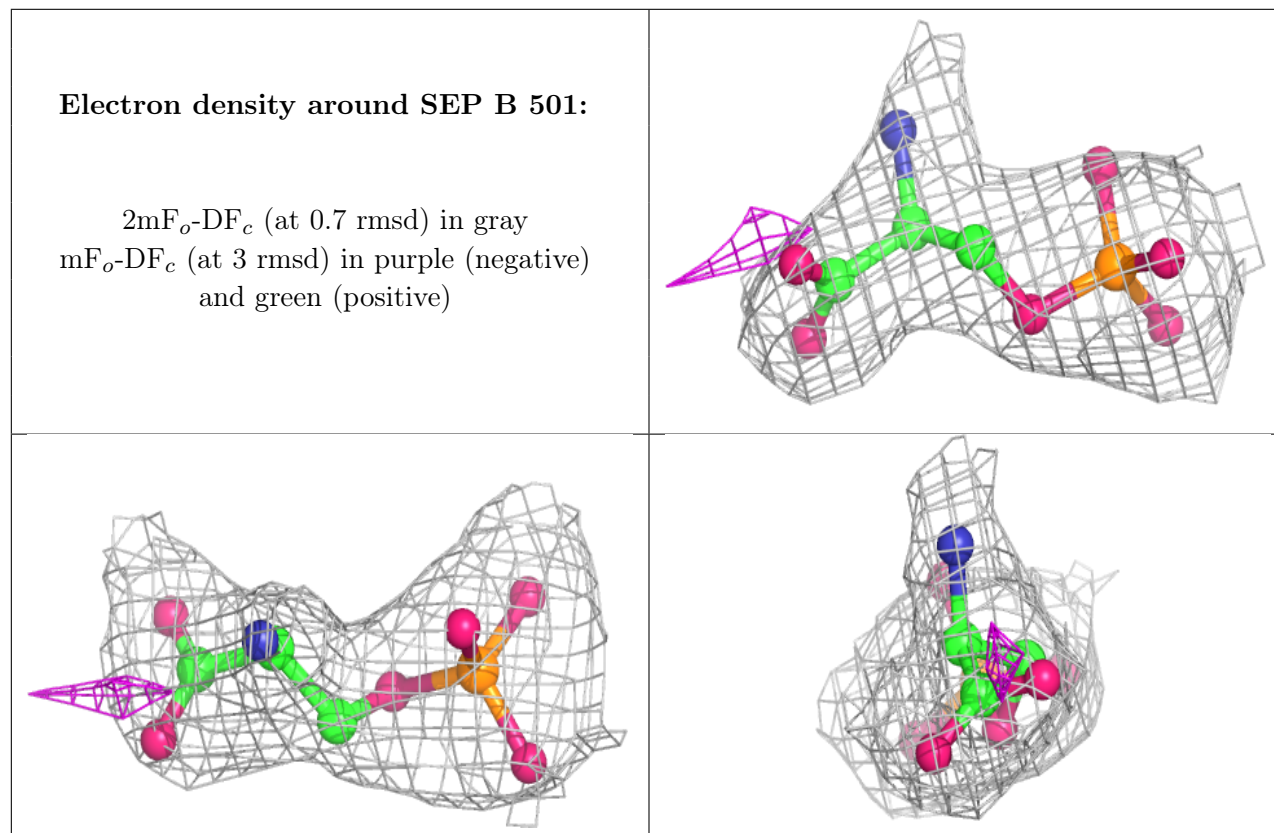
Mol	Type	Chain	Res	Atoms	RSCC	RSR	B-factors(Å <sup>2</sup> )	Q<0.9
6	SEP	B	501	11/11	0.94	0.24	45,54,65,67	0
6	SEP	B	502	11/11	0.94	0.17	55,69,91,95	0
5	U93	E	401	35/35	0.95	0.15	26,39,49,52	0
4	E1U	D	401	26/26	0.95	0.18	27,40,45,51	0
4	E1U	F	401	26/26	0.95	0.19	40,54,62,65	0
6	SEP	C	501	11/11	0.96	0.19	45,52,57,59	0
7	PMP	A	801	16/16	0.96	0.17	46,55,65,68	0

*Continued on next page...*

*Continued from previous page...*

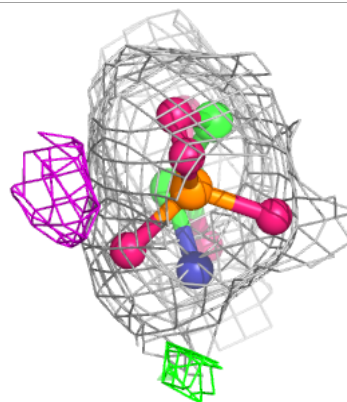
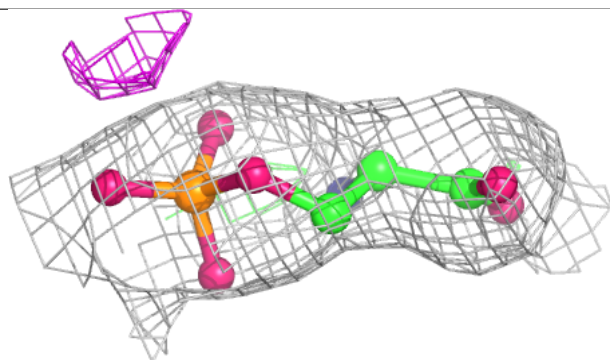
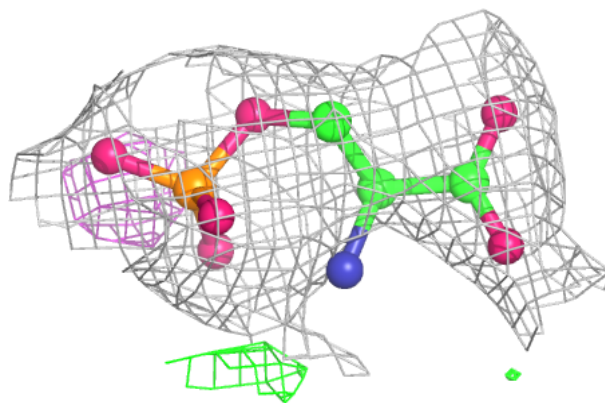
Mol	Type	Chain	Res	Atoms	RSCC	RSR	B-factors( $\text{\AA}^2$ )	Q<0.9
8	SO4	H	701	5/5	0.96	0.13	45,59,69,69	0
8	SO4	G	801	5/5	0.97	0.13	54,60,70,76	0

The following is a graphical depiction of the model fit to experimental electron density of all instances of the Ligand of Interest. In addition, ligands with molecular weight > 250 and outliers as shown on the geometry validation Tables will also be included. Each fit is shown from different orientation to approximate a three-dimensional view.



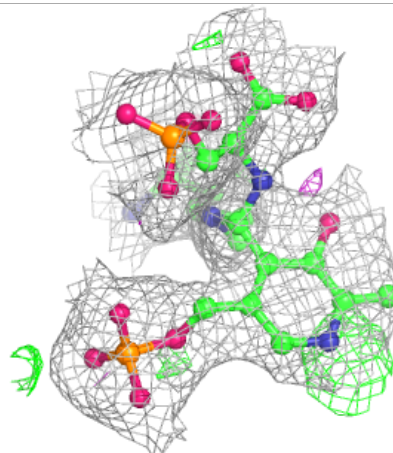
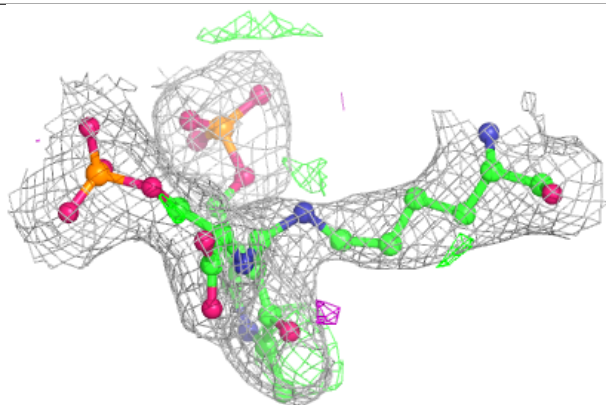
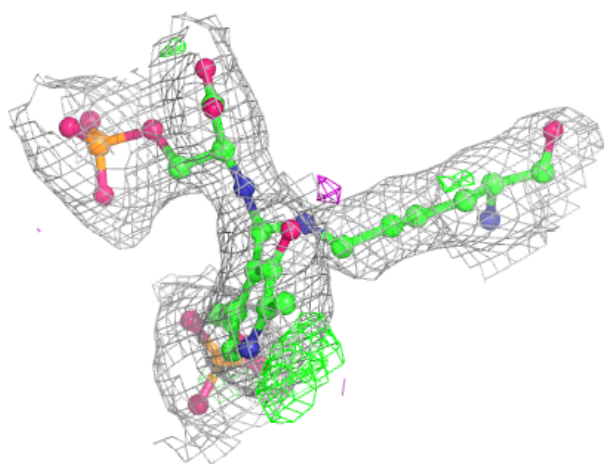
**Electron density around SEP B 502:**

$2mF_o-DF_c$  (at 0.7 rmsd) in gray  
 $mF_o-DF_c$  (at 3 rmsd) in purple (negative)  
and green (positive)



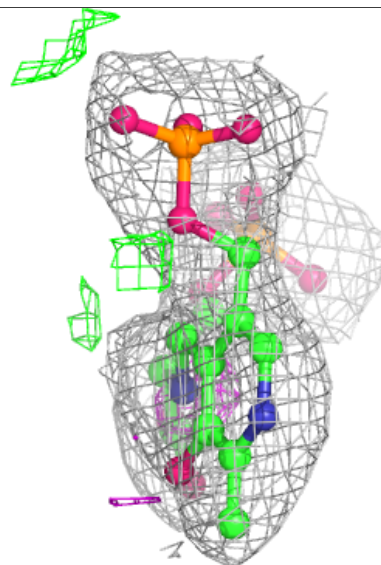
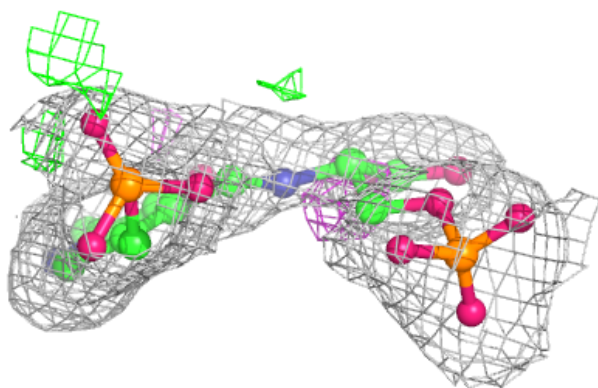
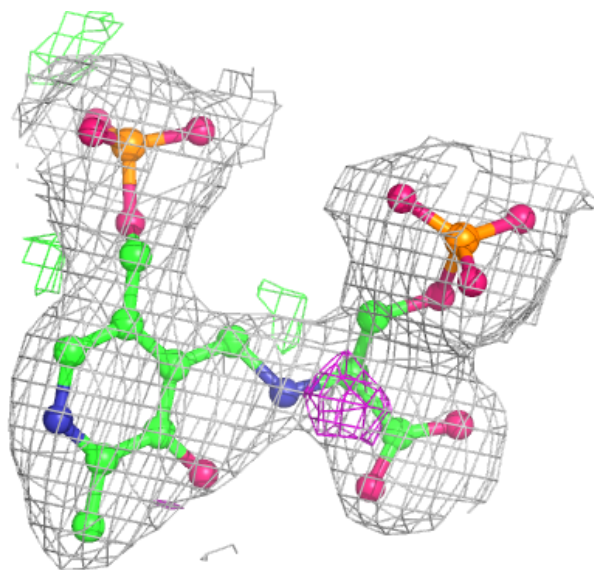
**Electron density around U93 E 401:**

$2mF_o-DF_c$  (at 0.7 rmsd) in gray  
 $mF_o-DF_c$  (at 3 rmsd) in purple (negative)  
and green (positive)



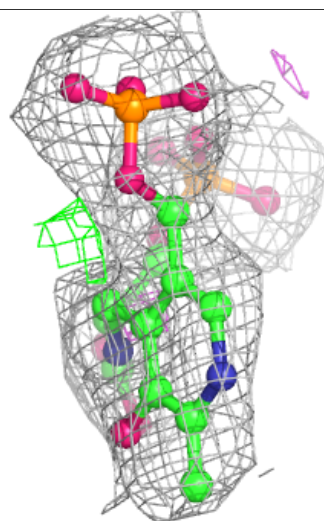
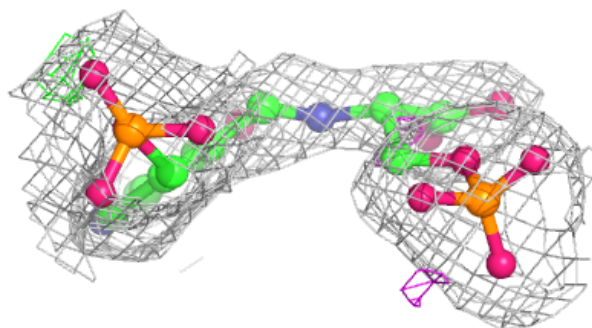
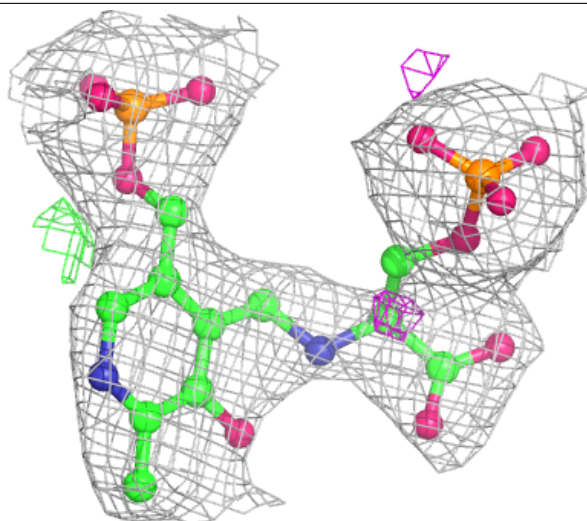
**Electron density around E1U D 401:**

$2mF_o-DF_c$  (at 0.7 rmsd) in gray  
 $mF_o-DF_c$  (at 3 rmsd) in purple (negative)  
and green (positive)



**Electron density around E1U F 401:**

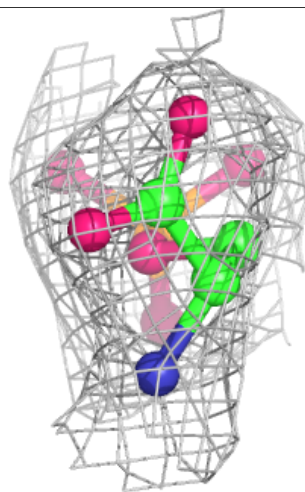
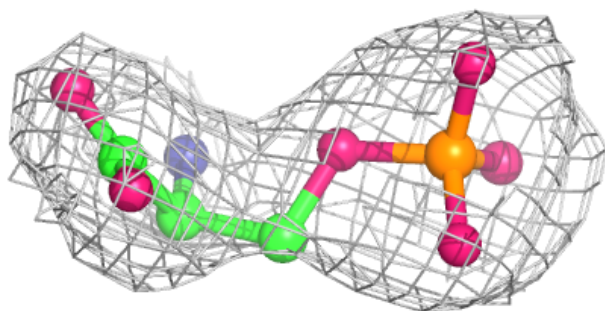
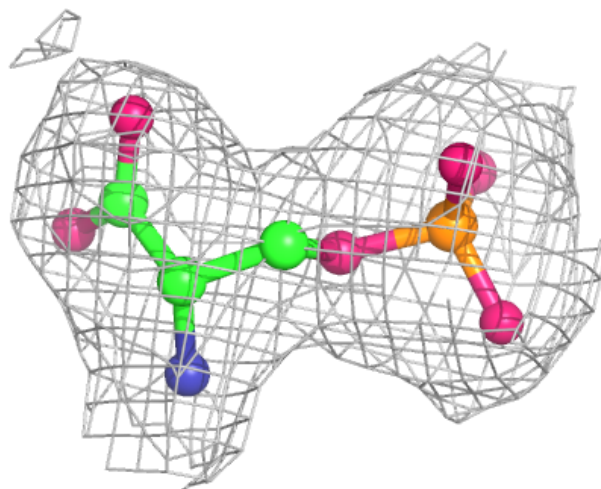
$2mF_o-DF_c$  (at 0.7 rmsd) in gray  
 $mF_o-DF_c$  (at 3 rmsd) in purple (negative)  
and green (positive)

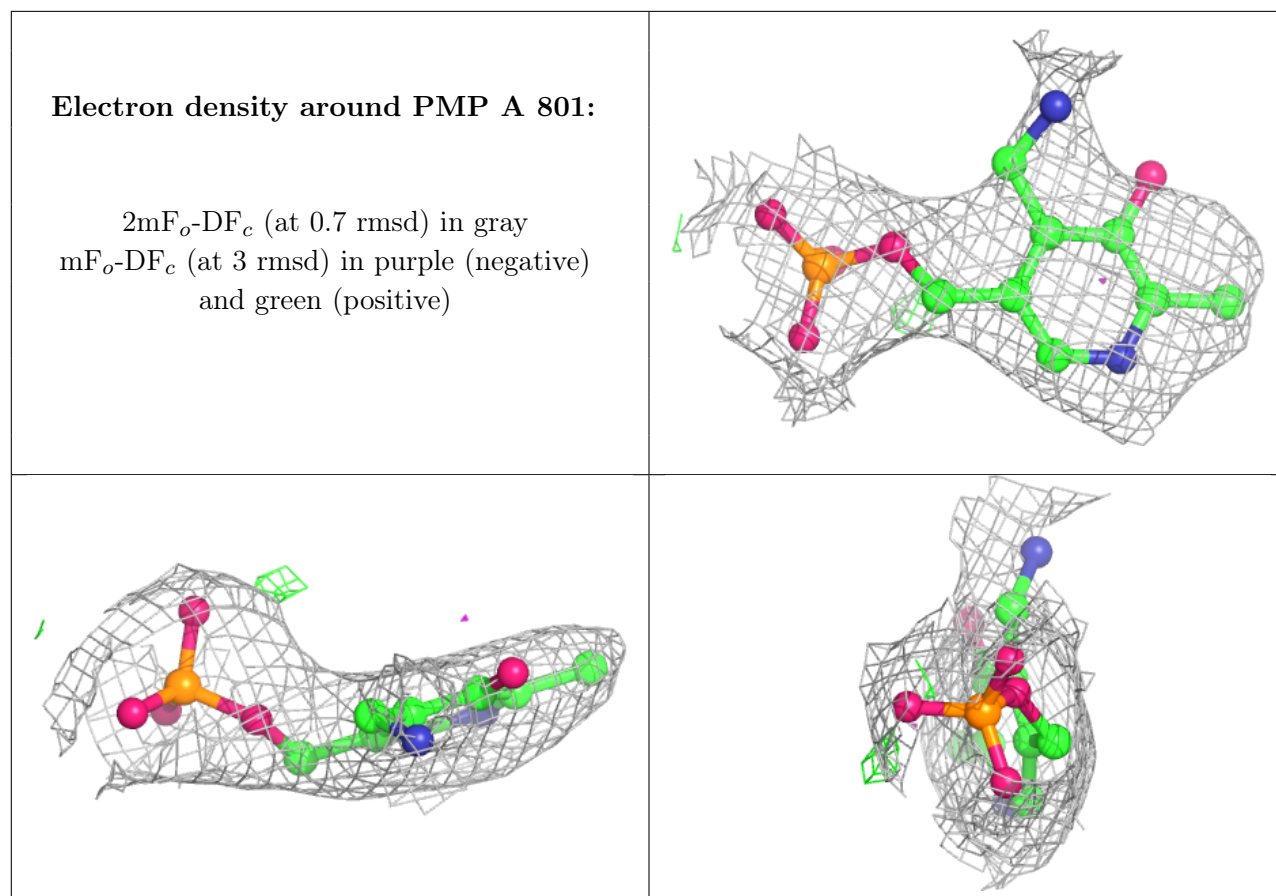




**Electron density around SEP C 501:**

$2mF_o-DF_c$  (at 0.7 rmsd) in gray  
 $mF_o-DF_c$  (at 3 rmsd) in purple (negative)  
and green (positive)





## 6.5 Other polymers [i](#)

There are no such residues in this entry.