



Full wwPDB X-ray Structure Validation Report ⓘ

Nov 14, 2023 – 09:44 PM JST

PDB ID : 6AG0
Title : The X-ray Crystallographic Structure of Maltooligosaccharide-forming Amylase from *Bacillus stearothermophilus* STB04
Authors : Li, Z.F.; Li, Y.L.; Ban, X.F.; Zhang, C.Y.; Jin, T.C.; Xie, X.F.; Gu, Z.B.; Li, C.M.
Deposited on : 2018-08-09
Resolution : 2.20 Å(reported)

This is a Full wwPDB X-ray Structure Validation Report for a publicly released PDB entry.

We welcome your comments at validation@mail.wwpdb.org

A user guide is available at

<https://www.wwpdb.org/validation/2017/XrayValidationReportHelp>

with specific help available everywhere you see the ⓘ symbol.

The types of validation reports are described at

<http://www.wwpdb.org/validation/2017/FAQs#types>.

The following versions of software and data (see [references ⓘ](#)) were used in the production of this report:

MolProbity : 4.02b-467
Mogul : 1.8.5 (274361), CSD as541be (2020)
Xtriage (Phenix) : 1.13
EDS : 2.36
Percentile statistics : 20191225.v01 (using entries in the PDB archive December 25th 2019)
Refmac : 5.8.0158
CCP4 : 7.0.044 (Gargrove)
Ideal geometry (proteins) : Engh & Huber (2001)
Ideal geometry (DNA, RNA) : Parkinson et al. (1996)
Validation Pipeline (wwPDB-VP) : 2.36

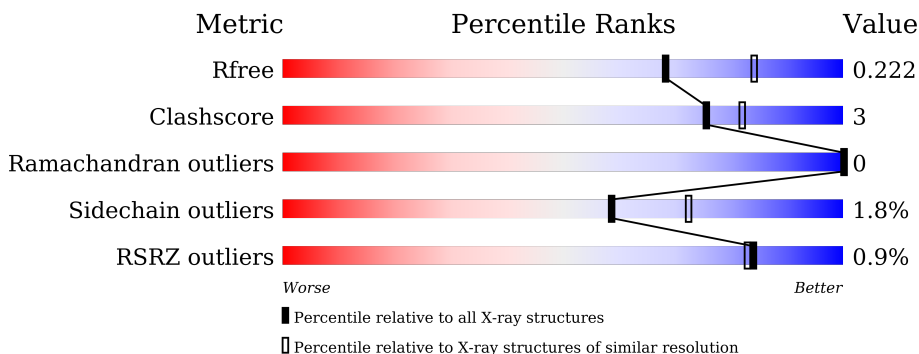
1 Overall quality at a glance

The following experimental techniques were used to determine the structure:

X-RAY DIFFRACTION

The reported resolution of this entry is 2.20 Å.

Percentile scores (ranging between 0-100) for global validation metrics of the entry are shown in the following graphic. The table shows the number of entries on which the scores are based.



Metric	Whole archive (#Entries)	Similar resolution (#Entries, resolution range(Å))
R_{free}	130704	4898 (2.20-2.20)
Clashscore	141614	5594 (2.20-2.20)
Ramachandran outliers	138981	5503 (2.20-2.20)
Sidechain outliers	138945	5504 (2.20-2.20)
RSRZ outliers	127900	4800 (2.20-2.20)

The table below summarises the geometric issues observed across the polymeric chains and their fit to the electron density. The red, orange, yellow and green segments of the lower bar indicate the fraction of residues that contain outliers for ≥ 3 , 2, 1 and 0 types of geometric quality criteria respectively. A grey segment represents the fraction of residues that are not modelled. The numeric value for each fraction is indicated below the corresponding segment, with a dot representing fractions $\leq 5\%$. The upper red bar (where present) indicates the fraction of residues that have poor fit to the electron density. The numeric value is given above the bar.

Mol	Chain	Length	Quality of chain
1	A	542	 82% 7% 11%
1	C	542	 82% 8% 11%
2	B	3	 33% 67%
2	D	3	 100%
2	E	3	 33% 67%
2	F	3	 100%

Continued on next page...

Continued from previous page...

Mol	Chain	Length	Quality of chain
2	G	3	 100%
2	H	3	 100%
2	I	3	 67%  33%
2	J	3	 100%
2	K	3	 67%  33%
2	L	3	 100%
2	M	3	 100%

The following table lists non-polymeric compounds, carbohydrate monomers and non-standard residues in protein, DNA, RNA chains that are outliers for geometric or electron-density-fit criteria:

Mol	Type	Chain	Res	Chirality	Geometry	Clashes	Electron density
2	AC1	D	3	-	-	-	X
2	AC1	F	3	-	-	-	X
2	GLC	K	1	-	-	-	X

2 Entry composition [i](#)

There are 4 unique types of molecules in this entry. The entry contains 8621 atoms, of which 0 are hydrogens and 0 are deuteriums.

In the tables below, the ZeroOcc column contains the number of atoms modelled with zero occupancy, the AltConf column contains the number of residues with at least one atom in alternate conformation and the Trace column contains the number of residues modelled with at most 2 atoms.

- Molecule 1 is a protein called Alpha-amylase.

Mol	Chain	Residues	Atoms					ZeroOcc	AltConf	Trace
			Total	C	N	O	S			
1	A	482	3897	2511	644	732	10	0	0	0
1	C	483	3904	2515	645	734	10	0	0	0

There are 54 discrepancies between the modelled and reference sequences:

Chain	Residue	Modelled	Actual	Comment	Reference
A	-26	MET	-	expression tag	UNP Q9KWY6
A	-25	LYS	-	expression tag	UNP Q9KWY6
A	-24	LYS	-	expression tag	UNP Q9KWY6
A	-23	PHE	-	expression tag	UNP Q9KWY6
A	-22	LEU	-	expression tag	UNP Q9KWY6
A	-21	LYS	-	expression tag	UNP Q9KWY6
A	-20	SER	-	expression tag	UNP Q9KWY6
A	-19	THR	-	expression tag	UNP Q9KWY6
A	-18	ALA	-	expression tag	UNP Q9KWY6
A	-17	ALA	-	expression tag	UNP Q9KWY6
A	-16	LEU	-	expression tag	UNP Q9KWY6
A	-15	ALA	-	expression tag	UNP Q9KWY6
A	-14	LEU	-	expression tag	UNP Q9KWY6
A	-13	GLY	-	expression tag	UNP Q9KWY6
A	-12	LEU	-	expression tag	UNP Q9KWY6
A	-11	SER	-	expression tag	UNP Q9KWY6
A	-10	LEU	-	expression tag	UNP Q9KWY6
A	-9	THR	-	expression tag	UNP Q9KWY6
A	-8	PHE	-	expression tag	UNP Q9KWY6
A	-7	GLY	-	expression tag	UNP Q9KWY6
A	-6	LEU	-	expression tag	UNP Q9KWY6
A	-5	PHE	-	expression tag	UNP Q9KWY6
A	-4	SER	-	expression tag	UNP Q9KWY6
A	-3	PRO	-	expression tag	UNP Q9KWY6
A	-2	ALA	-	expression tag	UNP Q9KWY6

Continued on next page...

Continued from previous page...

Chain	Residue	Modelled	Actual	Comment	Reference
A	-1	GLN	-	expression tag	UNP Q9KWY6
A	0	ALA	-	expression tag	UNP Q9KWY6
C	-26	MET	-	expression tag	UNP Q9KWY6
C	-25	LYS	-	expression tag	UNP Q9KWY6
C	-24	LYS	-	expression tag	UNP Q9KWY6
C	-23	PHE	-	expression tag	UNP Q9KWY6
C	-22	LEU	-	expression tag	UNP Q9KWY6
C	-21	LYS	-	expression tag	UNP Q9KWY6
C	-20	SER	-	expression tag	UNP Q9KWY6
C	-19	THR	-	expression tag	UNP Q9KWY6
C	-18	ALA	-	expression tag	UNP Q9KWY6
C	-17	ALA	-	expression tag	UNP Q9KWY6
C	-16	LEU	-	expression tag	UNP Q9KWY6
C	-15	ALA	-	expression tag	UNP Q9KWY6
C	-14	LEU	-	expression tag	UNP Q9KWY6
C	-13	GLY	-	expression tag	UNP Q9KWY6
C	-12	LEU	-	expression tag	UNP Q9KWY6
C	-11	SER	-	expression tag	UNP Q9KWY6
C	-10	LEU	-	expression tag	UNP Q9KWY6
C	-9	THR	-	expression tag	UNP Q9KWY6
C	-8	PHE	-	expression tag	UNP Q9KWY6
C	-7	GLY	-	expression tag	UNP Q9KWY6
C	-6	LEU	-	expression tag	UNP Q9KWY6
C	-5	PHE	-	expression tag	UNP Q9KWY6
C	-4	SER	-	expression tag	UNP Q9KWY6
C	-3	PRO	-	expression tag	UNP Q9KWY6
C	-2	ALA	-	expression tag	UNP Q9KWY6
C	-1	GLN	-	expression tag	UNP Q9KWY6
C	0	ALA	-	expression tag	UNP Q9KWY6

- Molecule 2 is an oligosaccharide called 4,6-dideoxy-4-[[[(1S,4R,5S,6S)-4,5,6-trihydroxy-3-(hydroxymethyl)cyclohex-2-en-1-yl]amino}-alpha-D-glucopyranose-(1-4)-alpha-D-glucopyranoside-(1-4)-alpha-D-glucopyranose.

Mol	Chain	Residues	Atoms			ZeroOcc	AltConf	Trace	
2	B	3	Total	C	N	O	0	0	0
			44	25	1	18			
2	D	3	Total	C	N	O	0	0	0
			44	25	1	18			
2	E	3	Total	C	N	O	0	0	0
			44	25	1	18			
2	F	3	Total	C	N	O	0	0	0
			44	25	1	18			

Continued on next page...

Continued from previous page...

Mol	Chain	Residues	Atoms				ZeroOcc	AltConf	Trace
2	G	3	Total	C	N	O	0	0	0
			44	25	1	18			
2	H	3	Total	C	N	O	0	0	0
			44	25	1	18			
2	I	3	Total	C	N	O	0	0	0
			44	25	1	18			
2	J	3	Total	C	N	O	0	0	0
			44	25	1	18			
2	K	3	Total	C	N	O	0	0	0
			44	25	1	18			
2	L	3	Total	C	N	O	0	0	0
			44	25	1	18			
2	M	3	Total	C	N	O	0	0	0
			44	25	1	18			

- Molecule 3 is CALCIUM ION (three-letter code: CA) (formula: Ca).

Mol	Chain	Residues	Atoms		ZeroOcc	AltConf
3	A	4	Total	Ca	0	0
			4	4		
3	C	4	Total	Ca	0	0
			4	4		

- Molecule 4 is water.

Mol	Chain	Residues	Atoms		ZeroOcc	AltConf
4	A	143	Total	O	0	0
			143	143		
4	C	185	Total	O	0	0
			185	185		

GLC1
GLC2
AC13

- Molecule 2: 4,6-dideoxy-4- $\{[(1S,4R,5S,6S)-4,5,6\text{-trihydroxy-3-(hydroxymethyl)cyclohex-2-en-1-yl]amino}\}$ - α -D-glucopyranose-(1-4)- α -D-glucopyranose-(1-4)- α -D-glucopyranose

Chain E:  33% 67%

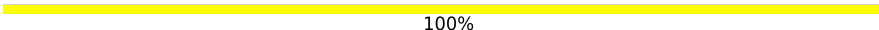
GLC1
GLC2
AC13

- Molecule 2: 4,6-dideoxy-4- $\{[(1S,4R,5S,6S)-4,5,6\text{-trihydroxy-3-(hydroxymethyl)cyclohex-2-en-1-yl]amino}\}$ - α -D-glucopyranose-(1-4)- α -D-glucopyranose-(1-4)- α -D-glucopyranose

Chain F:  100%

GLC1
GLC2
AC13

- Molecule 2: 4,6-dideoxy-4- $\{[(1S,4R,5S,6S)-4,5,6\text{-trihydroxy-3-(hydroxymethyl)cyclohex-2-en-1-yl]amino}\}$ - α -D-glucopyranose-(1-4)- α -D-glucopyranose-(1-4)- α -D-glucopyranose

Chain G:  100%

GLC1
GLC2
AC13

- Molecule 2: 4,6-dideoxy-4- $\{[(1S,4R,5S,6S)-4,5,6\text{-trihydroxy-3-(hydroxymethyl)cyclohex-2-en-1-yl]amino}\}$ - α -D-glucopyranose-(1-4)- α -D-glucopyranose-(1-4)- α -D-glucopyranose

Chain H:  100%

GLC1
GLC2
AC13

- Molecule 2: 4,6-dideoxy-4- $\{[(1S,4R,5S,6S)-4,5,6\text{-trihydroxy-3-(hydroxymethyl)cyclohex-2-en-1-yl]amino}\}$ - α -D-glucopyranose-(1-4)- α -D-glucopyranose-(1-4)- α -D-glucopyranose

Chain I:  67% 33%

GLC1
GLC2
AC13

- Molecule 2: 4,6-dideoxy-4- $\{[(1S,4R,5S,6S)-4,5,6\text{-trihydroxy-3-(hydroxymethyl)cyclohex-2-en-1-yl]amino}\}$ - α -D-glucopyranose-(1-4)- α -D-glucopyranose-(1-4)- α -D-glucopyranose

Chain J:  100%

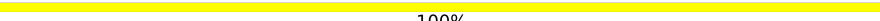
GLC1
GLC2
AC13

- Molecule 2: 4,6-dideoxy-4- $\{[(1S,4R,5S,6S)-4,5,6\text{-trihydroxy-3-(hydroxymethyl)cyclohex-2-en-1-yl]amino}\}$ - α -D-glucopyranose-(1-4)- α -D-glucopyranose-(1-4)- α -D-glucopyranose

Chain K:  67% 33%

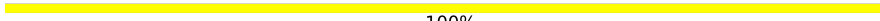
GLC1
GLC2
AC13

- Molecule 2: 4,6-dideoxy-4- $\{[(1S,4R,5S,6S)-4,5,6\text{-trihydroxy-3-(hydroxymethyl)cyclohex-2-en-1-yl]amino}\}$ - α -D-glucopyranose-(1-4)- α -D-glucopyranose-(1-4)- α -D-glucopyranose

Chain L:  100%

GLC1
GLC2
AC13

- Molecule 2: 4,6-dideoxy-4- $\{[(1S,4R,5S,6S)-4,5,6\text{-trihydroxy-3-(hydroxymethyl)cyclohex-2-en-1-yl]amino}\}$ - α -D-glucopyranose-(1-4)- α -D-glucopyranose-(1-4)- α -D-glucopyranose

Chain M:  100%

GLC1
GLC2
AC13

4 Data and refinement statistics

Property	Value	Source
Space group	P 1 21 1	Depositor
Cell constants a, b, c, α , β , γ	75.87Å 81.82Å 88.78Å 90.00° 105.85° 90.00°	Depositor
Resolution (Å)	42.19 – 2.20 42.19 – 2.20	Depositor EDS
% Data completeness (in resolution range)	99.8 (42.19-2.20) 99.8 (42.19-2.20)	Depositor EDS
R_{merge}	0.14	Depositor
R_{sym}	(Not available)	Depositor
$\langle I/\sigma(I) \rangle$ ¹	1.58 (at 2.20Å)	Xtrriage
Refinement program	PHENIX (1.11.1_2575)	Depositor
R, R_{free}	0.167 , 0.223 0.168 , 0.222	Depositor DCC
R_{free} test set	2657 reflections (5.00%)	wwPDB-VP
Wilson B-factor (Å ²)	33.0	Xtrriage
Anisotropy	0.505	Xtrriage
Bulk solvent k_{sol} (e/Å ³), B_{sol} (Å ²)	0.33 , 37.3	EDS
L-test for twinning ²	$\langle L \rangle = 0.50$, $\langle L^2 \rangle = 0.33$	Xtrriage
Estimated twinning fraction	No twinning to report.	Xtrriage
F_o, F_c correlation	0.96	EDS
Total number of atoms	8621	wwPDB-VP
Average B, all atoms (Å ²)	38.0	wwPDB-VP

Xtrriage's analysis on translational NCS is as follows: *The largest off-origin peak in the Patterson function is 8.04% of the height of the origin peak. No significant pseudotranslation is detected.*

¹Intensities estimated from amplitudes.

²Theoretical values of $\langle |L| \rangle$, $\langle L^2 \rangle$ for acentric reflections are 0.5, 0.333 respectively for untwinned datasets, and 0.375, 0.2 for perfectly twinned datasets.

5 Model quality [i](#)

5.1 Standard geometry [i](#)

Bond lengths and bond angles in the following residue types are not validated in this section: GLC, CA, AC1

The Z score for a bond length (or angle) is the number of standard deviations the observed value is removed from the expected value. A bond length (or angle) with $|Z| > 5$ is considered an outlier worth inspection. RMSZ is the root-mean-square of all Z scores of the bond lengths (or angles).

Mol	Chain	Bond lengths		Bond angles	
		RMSZ	# Z >5	RMSZ	# Z >5
1	A	0.44	0/4024	0.59	0/5478
1	C	0.45	0/4031	0.59	0/5488
All	All	0.45	0/8055	0.59	0/10966

There are no bond length outliers.

There are no bond angle outliers.

There are no chirality outliers.

There are no planarity outliers.

5.2 Too-close contacts [i](#)

In the following table, the Non-H and H(model) columns list the number of non-hydrogen atoms and hydrogen atoms in the chain respectively. The H(added) column lists the number of hydrogen atoms added and optimized by MolProbity. The Clashes column lists the number of clashes within the asymmetric unit, whereas Symm-Clashes lists symmetry-related clashes.

Mol	Chain	Non-H	H(model)	H(added)	Clashes	Symm-Clashes
1	A	3897	0	3670	23	1
1	C	3904	0	3677	24	0
2	B	44	0	29	1	1
2	D	44	0	30	0	0
2	E	44	0	30	1	0
2	F	44	0	30	0	0
2	G	44	0	30	0	0
2	H	44	0	30	0	0
2	I	44	0	30	1	0
2	J	44	0	29	0	0
2	K	44	0	30	2	0

Continued on next page...

Continued from previous page...

Mol	Chain	Non-H	H(model)	H(added)	Clashes	Symm-Clashes
2	L	44	0	30	0	0
2	M	44	0	30	0	0
3	A	4	0	0	0	0
3	C	4	0	0	0	0
4	A	143	0	0	3	0
4	C	185	0	0	1	0
All	All	8621	0	7675	50	1

The all-atom clashscore is defined as the number of clashes found per 1000 atoms (including hydrogen atoms). The all-atom clashscore for this structure is 3.

All (50) close contacts within the same asymmetric unit are listed below, sorted by their clash magnitude.

Atom-1	Atom-2	Interatomic distance (Å)	Clash overlap (Å)
1:A:52:ARG:HB2	1:A:73:THR:HG21	1.70	0.73
1:C:52:ARG:HB2	1:C:73:THR:HG21	1.72	0.72
1:A:10:GLN:HB2	1:A:42:TRP:CE3	2.30	0.66
1:A:174:ARG:NH1	4:A:703:HOH:O	2.32	0.63
1:C:142:PHE:HB2	1:C:156:TRP:HB2	1.80	0.63
1:A:3:PRO:O	1:A:419:LYS:NZ	2.33	0.62
1:C:208:HIS:HD2	1:C:210:GLU:H	1.46	0.61
1:A:400:HIS:ND1	4:A:702:HOH:O	2.32	0.61
1:A:208:HIS:HD2	1:A:210:GLU:H	1.49	0.60
1:C:208:HIS:CD2	1:C:210:GLU:HB2	2.37	0.60
2:K:2:GLC:O4	2:K:2:GLC:O6	2.21	0.59
1:A:403:LEU:HD22	1:A:409:ILE:HB	1.86	0.58
1:C:223:VAL:HG22	1:C:228:ILE:HD11	1.88	0.56
1:A:82:ALA:O	1:A:86:GLN:HG3	2.06	0.56
1:A:208:HIS:CD2	1:A:210:GLU:HB2	2.41	0.54
1:A:405:HIS:HB3	1:A:408:ILE:O	2.10	0.52
1:A:142:PHE:HB2	1:A:156:TRP:HB2	1.92	0.51
1:C:403:LEU:HD22	1:C:409:ILE:HB	1.91	0.51
1:C:187:TRP:CD2	1:C:188:GLU:HA	2.46	0.50
1:C:52:ARG:HB2	1:C:73:THR:CG2	2.41	0.50
1:C:431:GLY:HA2	2:K:2:GLC:H62	1.93	0.50
1:A:439:TYR:CZ	1:A:441:GLY:HA2	2.47	0.49
1:C:313:ASN:H	1:C:317:LYS:NZ	2.10	0.49
1:C:165:ASP:HA	1:C:174:ARG:O	2.13	0.49
1:C:405:HIS:HB3	1:C:408:ILE:O	2.14	0.48
2:I:3:AC1:O3	2:I:3:AC1:O2B	2.28	0.48
1:C:311:MET:HG3	1:C:353:PHE:CZ	2.49	0.48

Continued on next page...

Continued from previous page...

Atom-1	Atom-2	Interatomic distance (Å)	Clash overlap (Å)
1:C:187:TRP:CG	1:C:188:GLU:HA	2.50	0.47
1:A:59:VAL:HA	4:A:761:HOH:O	2.14	0.47
1:C:60:TYR:CG	1:C:71:LYS:HD3	2.49	0.47
1:A:320:PRO:HB3	1:A:359:GLU:HB3	1.97	0.46
1:A:208:HIS:HE1	2:B:2:GLC:O6	1.99	0.46
1:C:208:HIS:HD2	1:C:210:GLU:N	2.13	0.45
1:A:187:TRP:CD2	1:A:188:GLU:HA	2.52	0.45
1:A:8:MET:O	1:A:363:GLY:HA2	2.18	0.43
1:A:52:ARG:HB2	1:A:73:THR:CG2	2.44	0.43
1:A:316:MET:HE3	1:A:353:PHE:HE2	1.83	0.43
1:A:208:HIS:HD2	1:A:210:GLU:N	2.15	0.42
1:C:439:TYR:CZ	1:C:441:GLY:HA2	2.54	0.42
1:C:311:MET:HG3	1:C:353:PHE:HZ	1.84	0.41
1:A:165:ASP:HA	1:A:174:ARG:O	2.21	0.41
1:C:315:LEU:HD23	1:C:315:LEU:HA	1.84	0.41
2:E:1:GLC:H62	2:E:2:GLC:O2	2.19	0.41
1:C:10:GLN:HE22	1:C:329:ASN:HB2	1.86	0.41
1:C:59:VAL:HA	4:C:776:HOH:O	2.22	0.41
1:A:208:HIS:HA	1:A:209:PRO:HD3	2.00	0.40
1:C:266:TRP:CE2	1:C:338:LEU:HD13	2.56	0.40
1:C:458:ASP:OD2	1:C:458:ASP:N	2.54	0.40
1:A:316:MET:CE	1:A:353:PHE:HE2	2.34	0.40
1:C:344:PRO:O	1:C:348:PRO:HD3	2.22	0.40

All (1) symmetry-related close contacts are listed below. The label for Atom-2 includes the symmetry operator and encoded unit-cell translations to be applied.

Atom-1	Atom-2	Interatomic distance (Å)	Clash overlap (Å)
1:A:72:GLY:O	2:B:3:AC1:O4[2_556]	2.16	0.04

5.3 Torsion angles [i](#)

5.3.1 Protein backbone [i](#)

In the following table, the Percentiles column shows the percent Ramachandran outliers of the chain as a percentile score with respect to all X-ray entries followed by that with respect to entries of similar resolution.

The Analysed column shows the number of residues for which the backbone conformation was analysed, and the total number of residues.

Mol	Chain	Analysed	Favoured	Allowed	Outliers	Percentiles	
1	A	480/542 (89%)	465 (97%)	15 (3%)	0	100	100
1	C	481/542 (89%)	470 (98%)	11 (2%)	0	100	100
All	All	961/1084 (89%)	935 (97%)	26 (3%)	0	100	100

There are no Ramachandran outliers to report.

5.3.2 Protein sidechains [i](#)

In the following table, the Percentiles column shows the percent sidechain outliers of the chain as a percentile score with respect to all X-ray entries followed by that with respect to entries of similar resolution.

The Analysed column shows the number of residues for which the sidechain conformation was analysed, and the total number of residues.

Mol	Chain	Analysed	Rotameric	Outliers	Percentiles	
1	A	406/455 (89%)	398 (98%)	8 (2%)	55	69
1	C	407/455 (90%)	400 (98%)	7 (2%)	60	74
All	All	813/910 (89%)	798 (98%)	15 (2%)	59	72

All (15) residues with a non-rotameric sidechain are listed below:

Mol	Chain	Res	Type
1	A	4	PHE
1	A	42	TRP
1	A	47	TYR
1	A	126	ARG
1	A	196	TYR
1	A	361	TYR
1	A	442	LYS
1	A	484	LYS
1	C	4	PHE
1	C	47	TYR
1	C	126	ARG
1	C	196	TYR
1	C	249	SER
1	C	361	TYR
1	C	379	SER

Sometimes sidechains can be flipped to improve hydrogen bonding and reduce clashes. All (4) such sidechains are listed below:

Mol	Chain	Res	Type
1	A	10	GLN
1	A	208	HIS
1	C	10	GLN
1	C	208	HIS

5.3.3 RNA [i](#)

There are no RNA molecules in this entry.

5.4 Non-standard residues in protein, DNA, RNA chains [i](#)

There are no non-standard protein/DNA/RNA residues in this entry.

5.5 Carbohydrates [i](#)

33 monosaccharides are modelled in this entry.

In the following table, the Counts columns list the number of bonds (or angles) for which Mogul statistics could be retrieved, the number of bonds (or angles) that are observed in the model and the number of bonds (or angles) that are defined in the Chemical Component Dictionary. The Link column lists molecule types, if any, to which the group is linked. The Z score for a bond length (or angle) is the number of standard deviations the observed value is removed from the expected value. A bond length (or angle) with $|Z| > 2$ is considered an outlier worth inspection. RMSZ is the root-mean-square of all Z scores of the bond lengths (or angles).

Mol	Type	Chain	Res	Link	Bond lengths			Bond angles		
					Counts	RMSZ	# Z > 2	Counts	RMSZ	# Z > 2
2	GLC	B	1	2	12,12,12	1.25	1 (8%)	17,17,17	0.95	0
2	GLC	B	2	2	11,11,12	1.81	2 (18%)	15,15,17	1.57	3 (20%)
2	AC1	B	3	2	21,22,23	6.07	8 (38%)	22,32,34	2.30	7 (31%)
2	GLC	D	1	2	12,12,12	1.25	1 (8%)	17,17,17	0.90	0
2	GLC	D	2	2	11,11,12	1.63	2 (18%)	15,15,17	1.63	4 (26%)
2	AC1	D	3	2	21,22,23	6.22	8 (38%)	22,32,34	1.73	3 (13%)
2	GLC	E	1	2	12,12,12	1.41	2 (16%)	17,17,17	1.31	3 (17%)
2	GLC	E	2	2	11,11,12	2.18	3 (27%)	15,15,17	1.90	6 (40%)
2	AC1	E	3	2	21,22,23	6.32	9 (42%)	22,32,34	1.50	5 (22%)
2	GLC	F	1	2	12,12,12	1.34	1 (8%)	17,17,17	1.42	3 (17%)
2	GLC	F	2	2	11,11,12	1.92	3 (27%)	15,15,17	0.92	0
2	AC1	F	3	2	21,22,23	6.07	8 (38%)	22,32,34	1.96	6 (27%)
2	GLC	G	1	2	12,12,12	1.28	1 (8%)	17,17,17	0.67	0

Mol	Type	Chain	Res	Link	Bond lengths			Bond angles		
					Counts	RMSZ	# Z > 2	Counts	RMSZ	# Z > 2
2	GLC	G	2	2	11,11,12	1.77	2 (18%)	15,15,17	0.96	0
2	AC1	G	3	2	21,22,23	6.09	8 (38%)	22,32,34	1.11	2 (9%)
2	GLC	H	1	2	12,12,12	1.43	1 (8%)	17,17,17	1.21	2 (11%)
2	GLC	H	2	2	11,11,12	1.70	3 (27%)	15,15,17	1.79	6 (40%)
2	AC1	H	3	2	21,22,23	5.99	8 (38%)	22,32,34	2.03	4 (18%)
2	GLC	I	1	2	12,12,12	1.22	1 (8%)	17,17,17	0.81	0
2	GLC	I	2	2	11,11,12	1.76	3 (27%)	15,15,17	0.93	0
2	AC1	I	3	2	21,22,23	6.08	8 (38%)	22,32,34	1.42	4 (18%)
2	GLC	J	1	2	12,12,12	1.36	1 (8%)	17,17,17	1.39	3 (17%)
2	GLC	J	2	2	11,11,12	1.79	3 (27%)	15,15,17	1.87	1 (6%)
2	AC1	J	3	2	21,22,23	6.19	8 (38%)	22,32,34	1.52	3 (13%)
2	GLC	K	1	2	12,12,12	1.32	2 (16%)	17,17,17	1.22	2 (11%)
2	GLC	K	2	2	11,11,12	1.91	2 (18%)	15,15,17	2.04	4 (26%)
2	AC1	K	3	2	21,22,23	6.25	9 (42%)	22,32,34	1.66	8 (36%)
2	GLC	L	1	2	12,12,12	1.31	1 (8%)	17,17,17	1.41	4 (23%)
2	GLC	L	2	2	11,11,12	1.64	2 (18%)	15,15,17	1.09	0
2	AC1	L	3	2	21,22,23	5.92	8 (38%)	22,32,34	0.90	2 (9%)
2	GLC	M	1	2	12,12,12	1.44	2 (16%)	17,17,17	1.52	4 (23%)
2	GLC	M	2	2	11,11,12	1.68	2 (18%)	15,15,17	0.71	0
2	AC1	M	3	2	21,22,23	6.07	9 (42%)	22,32,34	1.13	3 (13%)

In the following table, the Chirals column lists the number of chiral outliers, the number of chiral centers analysed, the number of these observed in the model and the number defined in the Chemical Component Dictionary. Similar counts are reported in the Torsion and Rings columns. '-' means no outliers of that kind were identified.

Mol	Type	Chain	Res	Link	Chirals	Torsions	Rings
2	GLC	B	1	2	-	0/2/22/22	0/1/1/1
2	GLC	B	2	2	-	2/2/19/22	0/1/1/1
2	AC1	B	3	2	-	2/6/43/46	0/2/2/2
2	GLC	D	1	2	-	0/2/22/22	0/1/1/1
2	GLC	D	2	2	-	1/2/19/22	0/1/1/1
2	AC1	D	3	2	-	1/6/43/46	0/2/2/2
2	GLC	E	1	2	-	2/2/22/22	0/1/1/1
2	GLC	E	2	2	-	2/2/19/22	0/1/1/1
2	AC1	E	3	2	-	1/6/43/46	0/2/2/2
2	GLC	F	1	2	-	1/2/22/22	0/1/1/1

Continued on next page...

Continued from previous page...

Mol	Type	Chain	Res	Link	Chirals	Torsions	Rings
2	GLC	F	2	2	-	0/2/19/22	0/1/1/1
2	AC1	F	3	2	-	2/6/43/46	0/2/2/2
2	GLC	G	1	2	-	1/2/22/22	0/1/1/1
2	GLC	G	2	2	-	2/2/19/22	0/1/1/1
2	AC1	G	3	2	-	3/6/43/46	0/2/2/2
2	GLC	H	1	2	-	2/2/22/22	0/1/1/1
2	GLC	H	2	2	-	2/2/19/22	0/1/1/1
2	AC1	H	3	2	-	1/6/43/46	0/2/2/2
2	GLC	I	1	2	-	0/2/22/22	0/1/1/1
2	GLC	I	2	2	-	1/2/19/22	0/1/1/1
2	AC1	I	3	2	-	3/6/43/46	0/2/2/2
2	GLC	J	1	2	-	0/2/22/22	0/1/1/1
2	GLC	J	2	2	-	0/2/19/22	0/1/1/1
2	AC1	J	3	2	-	1/6/43/46	0/2/2/2
2	GLC	K	1	2	-	0/2/22/22	0/1/1/1
2	GLC	K	2	2	-	2/2/19/22	0/1/1/1
2	AC1	K	3	2	-	1/6/43/46	0/2/2/2
2	GLC	L	1	2	-	0/2/22/22	0/1/1/1
2	GLC	L	2	2	-	0/2/19/22	0/1/1/1
2	AC1	L	3	2	-	3/6/43/46	0/2/2/2
2	GLC	M	1	2	-	2/2/22/22	0/1/1/1
2	GLC	M	2	2	-	2/2/19/22	0/1/1/1
2	AC1	M	3	2	-	3/6/43/46	0/2/2/2

All (132) bond length outliers are listed below:

Mol	Chain	Res	Type	Atoms	Z	Observed(Å)	Ideal(Å)
2	K	3	AC1	C7B-C5B	21.54	1.62	1.32
2	E	3	AC1	C7B-C5B	21.49	1.62	1.32
2	J	3	AC1	C7B-C5B	21.19	1.62	1.32
2	D	3	AC1	C7B-C5B	21.18	1.62	1.32
2	G	3	AC1	C7B-C5B	21.08	1.62	1.32
2	I	3	AC1	C7B-C5B	21.01	1.62	1.32
2	L	3	AC1	C7B-C5B	20.88	1.62	1.32
2	M	3	AC1	C7B-C5B	20.82	1.61	1.32
2	F	3	AC1	C7B-C5B	20.71	1.61	1.32
2	B	3	AC1	C7B-C5B	20.53	1.61	1.32
2	H	3	AC1	C7B-C5B	20.25	1.61	1.32
2	H	3	AC1	C2B-C1B	11.49	1.68	1.52
2	K	3	AC1	C2B-C1B	11.48	1.68	1.52

Continued on next page...

Continued from previous page...

Mol	Chain	Res	Type	Atoms	Z	Observed(Å)	Ideal(Å)
2	D	3	AC1	C2B-C1B	11.37	1.67	1.52
2	F	3	AC1	C2B-C1B	11.33	1.67	1.52
2	E	3	AC1	C2B-C1B	11.32	1.67	1.52
2	J	3	AC1	C2B-C1B	11.04	1.67	1.52
2	I	3	AC1	C2B-C1B	11.01	1.67	1.52
2	B	3	AC1	C2B-C1B	10.78	1.67	1.52
2	G	3	AC1	C2B-C1B	10.74	1.67	1.52
2	M	3	AC1	C2B-C1B	10.45	1.66	1.52
2	L	3	AC1	C2B-C1B	10.15	1.66	1.52
2	D	3	AC1	C3B-C4A	8.69	1.65	1.53
2	K	3	AC1	C3B-C4A	8.67	1.65	1.53
2	I	3	AC1	C3B-C4A	8.42	1.65	1.53
2	E	3	AC1	C4A-C5B	-8.26	1.44	1.51
2	M	3	AC1	C4A-C5B	-8.21	1.44	1.51
2	J	3	AC1	C4A-C5B	-8.16	1.44	1.51
2	B	3	AC1	C4A-C5B	-8.15	1.44	1.51
2	B	3	AC1	C3B-C4A	8.12	1.64	1.53
2	F	3	AC1	C4A-C5B	-8.06	1.44	1.51
2	G	3	AC1	C4A-C5B	-7.99	1.44	1.51
2	F	3	AC1	C3B-C4A	7.88	1.64	1.53
2	J	3	AC1	C3B-C4A	7.88	1.64	1.53
2	H	3	AC1	C3B-C4A	7.80	1.64	1.53
2	M	3	AC1	C3B-C4A	7.80	1.64	1.53
2	G	3	AC1	C3B-C4A	7.66	1.64	1.53
2	L	3	AC1	C3B-C4A	7.56	1.64	1.53
2	E	3	AC1	C3B-C4A	7.49	1.64	1.53
2	H	3	AC1	C4A-C5B	-7.24	1.45	1.51
2	I	3	AC1	C4A-C5B	-7.16	1.45	1.51
2	D	3	AC1	C4A-C5B	-7.14	1.45	1.51
2	K	3	AC1	C4A-C5B	-6.34	1.46	1.51
2	M	3	AC1	C1B-C7B	-6.21	1.41	1.50
2	E	3	AC1	O5-C1	6.15	1.53	1.43
2	L	3	AC1	C4A-C5B	-6.03	1.46	1.51
2	L	3	AC1	C1B-C7B	-5.99	1.41	1.50
2	B	3	AC1	C1B-C7B	-5.94	1.41	1.50
2	H	3	AC1	C1B-C7B	-5.92	1.41	1.50
2	G	3	AC1	C3B-C2B	-5.67	1.37	1.52
2	K	3	AC1	C1B-C7B	-5.60	1.42	1.50
2	L	3	AC1	C3B-C2B	-5.59	1.38	1.52
2	D	3	AC1	C1B-C7B	-5.57	1.42	1.50
2	J	3	AC1	C1B-C7B	-5.56	1.42	1.50
2	I	3	AC1	C1B-C7B	-5.55	1.42	1.50

Continued on next page...

Continued from previous page...

Mol	Chain	Res	Type	Atoms	Z	Observed(Å)	Ideal(Å)
2	E	3	AC1	C3B-C2B	-5.54	1.38	1.52
2	B	3	AC1	C3B-C2B	-5.53	1.38	1.52
2	J	3	AC1	C3B-C2B	-5.52	1.38	1.52
2	M	3	AC1	C3B-C2B	-5.47	1.38	1.52
2	F	3	AC1	C1B-C7B	-5.46	1.42	1.50
2	G	3	AC1	C1B-C7B	-5.41	1.42	1.50
2	D	3	AC1	O5-C1	5.36	1.52	1.43
2	D	3	AC1	C3B-C2B	-5.26	1.38	1.52
2	E	2	GLC	O5-C1	5.23	1.52	1.43
2	K	3	AC1	O5-C1	5.21	1.52	1.43
2	K	3	AC1	C3B-C2B	-5.16	1.39	1.52
2	I	3	AC1	C3B-C2B	-5.15	1.39	1.52
2	H	3	AC1	C3B-C2B	-5.10	1.39	1.52
2	K	2	GLC	O5-C1	5.03	1.51	1.43
2	E	3	AC1	C1B-C7B	-5.00	1.43	1.50
2	F	3	AC1	C3B-C2B	-4.93	1.39	1.52
2	F	2	GLC	O5-C1	4.87	1.51	1.43
2	J	3	AC1	O5-C1	4.77	1.51	1.43
2	B	3	AC1	O5-C1	4.72	1.51	1.43
2	B	2	GLC	O5-C1	4.61	1.51	1.43
2	H	3	AC1	O5-C1	4.59	1.51	1.43
2	J	2	GLC	O5-C1	4.35	1.50	1.43
2	G	3	AC1	O5-C1	4.31	1.50	1.43
2	I	2	GLC	O5-C1	4.31	1.50	1.43
2	G	2	GLC	O5-C1	4.26	1.50	1.43
2	I	3	AC1	O5-C1	4.26	1.50	1.43
2	D	2	GLC	O5-C1	4.23	1.50	1.43
2	F	3	AC1	O5-C1	4.23	1.50	1.43
2	L	3	AC1	O5-C1	4.22	1.50	1.43
2	L	2	GLC	O5-C1	4.16	1.50	1.43
2	M	3	AC1	O5-C1	4.15	1.50	1.43
2	M	2	GLC	O5-C1	4.11	1.50	1.43
2	H	2	GLC	O5-C1	4.02	1.50	1.43
2	H	1	GLC	O5-C1	3.71	1.52	1.42
2	M	1	GLC	O5-C1	3.61	1.51	1.42
2	E	1	GLC	O5-C1	3.51	1.51	1.42
2	E	3	AC1	O5-C5	3.50	1.51	1.43
2	E	2	GLC	O5-C5	3.44	1.50	1.43
2	F	1	GLC	O5-C1	3.39	1.51	1.42
2	J	1	GLC	O5-C1	3.34	1.51	1.42
2	L	1	GLC	O5-C1	3.32	1.51	1.42
2	D	1	GLC	O5-C1	3.22	1.50	1.42

Continued on next page...

Continued from previous page...

Mol	Chain	Res	Type	Atoms	Z	Observed(Å)	Ideal(Å)
2	B	1	GLC	O5-C1	3.18	1.50	1.42
2	G	1	GLC	O5-C1	3.18	1.50	1.42
2	G	2	GLC	O5-C5	3.15	1.49	1.43
2	K	1	GLC	O5-C1	3.12	1.50	1.42
2	J	3	AC1	O5-C5	3.07	1.50	1.43
2	D	3	AC1	O5-C5	3.06	1.50	1.43
2	I	1	GLC	O5-C1	3.02	1.50	1.42
2	E	2	GLC	C2-C3	-2.88	1.48	1.52
2	F	2	GLC	O5-C5	2.81	1.49	1.43
2	K	3	AC1	O5-C5	2.79	1.49	1.43
2	H	2	GLC	O5-C5	2.71	1.48	1.43
2	B	2	GLC	O5-C5	2.65	1.48	1.43
2	K	2	GLC	O5-C5	2.65	1.48	1.43
2	M	2	GLC	O5-C5	2.63	1.48	1.43
2	I	2	GLC	O5-C5	2.63	1.48	1.43
2	E	3	AC1	C2-C3	-2.57	1.48	1.52
2	D	2	GLC	O5-C5	2.52	1.48	1.43
2	J	2	GLC	O5-C5	2.47	1.48	1.43
2	J	2	GLC	C2-C3	-2.46	1.48	1.52
2	B	3	AC1	O5-C5	2.41	1.48	1.43
2	G	3	AC1	O5-C5	2.38	1.48	1.43
2	M	3	AC1	O5-C5	2.38	1.48	1.43
2	H	3	AC1	O5-C5	2.34	1.48	1.43
2	L	3	AC1	O5-C5	2.32	1.48	1.43
2	L	2	GLC	O5-C5	2.31	1.48	1.43
2	I	2	GLC	C2-C3	-2.23	1.49	1.52
2	M	1	GLC	O5-C5	2.23	1.49	1.44
2	F	2	GLC	C2-C3	-2.22	1.49	1.52
2	F	3	AC1	O5-C5	2.17	1.48	1.43
2	I	3	AC1	O5-C5	2.12	1.48	1.43
2	H	2	GLC	C2-C3	-2.07	1.49	1.52
2	K	1	GLC	O5-C5	2.07	1.49	1.44
2	E	1	GLC	O5-C5	2.07	1.49	1.44
2	K	3	AC1	C2-C3	-2.06	1.49	1.52
2	M	3	AC1	C2-C3	-2.02	1.49	1.52

All (92) bond angle outliers are listed below:

Mol	Chain	Res	Type	Atoms	Z	Observed(°)	Ideal(°)
2	H	3	AC1	C4A-C5B-C7B	-7.58	109.78	122.23
2	J	2	GLC	O4-C4-C3	-5.99	96.49	110.35
2	K	2	GLC	C1-C2-C3	5.73	116.71	109.67

Continued on next page...

Continued from previous page...

Mol	Chain	Res	Type	Atoms	Z	Observed(°)	Ideal(°)
2	D	3	AC1	C4A-C5B-C7B	-5.68	112.89	122.23
2	B	3	AC1	C2-C3-C4	5.13	115.15	110.63
2	B	3	AC1	C1-C2-C3	4.83	115.60	109.67
2	B	3	AC1	C4A-C5B-C7B	-4.70	114.51	122.23
2	F	3	AC1	C4A-C5B-C7B	-4.62	114.65	122.23
2	F	3	AC1	C1-C2-C3	4.50	115.19	109.67
2	J	3	AC1	C4A-C5B-C7B	-4.14	115.44	122.23
2	B	3	AC1	O5-C1-C2	3.69	116.47	110.77
2	E	3	AC1	C2-C3-C4	-3.68	107.38	110.63
2	E	2	GLC	C3-C4-C5	3.60	116.66	110.24
2	B	2	GLC	O4-C4-C3	3.57	118.61	110.35
2	K	1	GLC	O5-C5-C4	3.57	116.17	109.69
2	D	2	GLC	O4-C4-C5	-3.56	100.47	109.30
2	J	3	AC1	C1-O5-C5	-3.35	105.18	112.78
2	E	3	AC1	O2-C2-C1	3.33	115.96	109.15
2	F	3	AC1	C2-C3-C4	3.32	113.55	110.63
2	K	2	GLC	O5-C1-C2	3.26	115.81	110.77
2	H	2	GLC	C1-C2-C3	-3.23	105.70	109.67
2	F	3	AC1	C2B-C3B-C4A	3.21	115.28	110.18
2	E	1	GLC	O5-C1-C2	3.15	115.91	110.28
2	F	1	GLC	O5-C1-C2	3.14	115.89	110.28
2	K	3	AC1	C2B-C3B-C4A	3.13	115.15	110.18
2	I	3	AC1	C2B-C3B-C4A	3.07	115.06	110.18
2	M	1	GLC	C1-O5-C5	3.01	119.35	113.66
2	E	2	GLC	O5-C5-C4	3.00	118.12	110.83
2	F	1	GLC	C1-C2-C3	2.98	116.50	110.31
2	M	1	GLC	O5-C5-C4	2.96	115.07	109.69
2	D	3	AC1	C1-O5-C5	-2.93	106.13	112.78
2	L	1	GLC	O5-C1-C2	2.90	115.47	110.28
2	E	2	GLC	C2-C3-C4	2.88	115.89	110.89
2	J	3	AC1	C1-C2-C3	-2.83	106.19	109.67
2	H	2	GLC	C6-C5-C4	-2.80	106.46	113.00
2	B	2	GLC	C1-C2-C3	2.77	113.07	109.67
2	J	1	GLC	O5-C1-C2	2.76	115.20	110.28
2	K	2	GLC	C1-O5-C5	2.72	115.87	112.19
2	I	3	AC1	C2-C3-C4	2.69	113.00	110.63
2	K	3	AC1	C1-C2-C3	2.68	112.96	109.67
2	K	3	AC1	C2-C3-C4	2.66	112.98	110.63
2	M	1	GLC	O5-C1-C2	2.65	115.01	110.28
2	D	3	AC1	C1-C2-C3	-2.65	106.41	109.67
2	B	2	GLC	C2-C3-C4	-2.63	106.34	110.89
2	B	3	AC1	O5-C5-C4	2.62	114.87	110.05

Continued on next page...

Continued from previous page...

Mol	Chain	Res	Type	Atoms	Z	Observed(°)	Ideal(°)
2	J	1	GLC	C1-C2-C3	2.55	115.60	110.31
2	I	3	AC1	C1-C2-C3	2.54	112.79	109.67
2	H	2	GLC	O5-C5-C4	2.53	116.98	110.83
2	G	3	AC1	C4A-C5B-C7B	-2.50	118.13	122.23
2	D	2	GLC	O5-C5-C6	2.49	111.11	107.20
2	L	1	GLC	C4-C3-C2	2.48	115.16	110.82
2	H	3	AC1	C2-C3-C4	-2.45	108.47	110.63
2	H	3	AC1	C7B-C1B-N4A	2.44	114.34	110.68
2	H	1	GLC	O4-C4-C5	2.42	115.31	109.30
2	H	2	GLC	C1-O5-C5	2.42	115.47	112.19
2	E	3	AC1	O5-C5-C4	2.40	114.48	110.05
2	H	3	AC1	C5-C4-N4A	-2.38	105.18	111.74
2	E	1	GLC	O5-C5-C4	2.36	113.98	109.69
2	K	3	AC1	C7B-C1B-N4A	-2.34	107.18	110.68
2	L	1	GLC	O5-C5-C4	2.32	113.91	109.69
2	E	3	AC1	C1-O5-C5	2.31	118.01	112.78
2	E	2	GLC	C1-C2-C3	-2.30	106.84	109.67
2	K	3	AC1	C3-C4-N4A	-2.30	104.91	111.49
2	J	1	GLC	O5-C5-C4	2.28	113.83	109.69
2	M	3	AC1	C7B-C1B-N4A	-2.26	107.29	110.68
2	M	3	AC1	C4A-C5B-C7B	-2.25	118.53	122.23
2	E	2	GLC	C1-O5-C5	2.25	115.24	112.19
2	H	1	GLC	O5-C1-C2	2.21	114.23	110.28
2	E	3	AC1	C4A-C5B-C7B	-2.20	118.62	122.23
2	K	3	AC1	C1-O5-C5	2.19	117.74	112.78
2	M	3	AC1	O6B-C6B-C5B	-2.19	107.26	112.50
2	K	2	GLC	O4-C4-C3	2.18	115.40	110.35
2	E	1	GLC	C1-O5-C5	2.17	117.75	113.66
2	F	3	AC1	C5-C4-N4A	-2.15	105.82	111.74
2	K	3	AC1	C4A-C5B-C7B	-2.13	118.73	122.23
2	F	1	GLC	O5-C5-C4	2.12	113.54	109.69
2	E	2	GLC	C6-C5-C4	-2.12	108.05	113.00
2	B	3	AC1	O3-C3-C2	-2.11	105.95	109.99
2	I	3	AC1	C4A-C5B-C7B	-2.11	118.77	122.23
2	G	3	AC1	C7B-C1B-N4A	-2.11	107.52	110.68
2	L	3	AC1	O4-C4A-C3B	-2.10	106.19	110.53
2	M	1	GLC	O5-C5-C6	2.10	111.66	106.44
2	B	3	AC1	C2B-C3B-C4A	2.09	113.49	110.18
2	H	2	GLC	C3-C4-C5	2.08	113.95	110.24
2	K	3	AC1	O2-C2-C3	-2.07	105.99	110.14
2	F	3	AC1	O3-C3-C2	-2.07	106.04	109.99
2	D	2	GLC	C3-C4-C5	2.06	113.92	110.24

Continued on next page...

Continued from previous page...

Mol	Chain	Res	Type	Atoms	Z	Observed(°)	Ideal(°)
2	D	2	GLC	C2-C3-C4	2.06	114.45	110.89
2	H	2	GLC	O5-C1-C2	-2.05	107.61	110.77
2	K	1	GLC	C3-C4-C5	2.04	113.88	110.24
2	L	3	AC1	C4A-C5B-C7B	-2.02	118.92	122.23
2	L	1	GLC	C3-C4-C5	2.01	113.83	110.24

There are no chirality outliers.

All (43) torsion outliers are listed below:

Mol	Chain	Res	Type	Atoms
2	B	3	AC1	C7B-C5B-C6B-O6B
2	D	3	AC1	C4A-C5B-C6B-O6B
2	F	3	AC1	C3-C4-N4A-C1B
2	G	3	AC1	C7B-C5B-C6B-O6B
2	H	3	AC1	C7B-C1B-N4A-C4
2	I	3	AC1	C5-C4-N4A-C1B
2	K	3	AC1	C7B-C5B-C6B-O6B
2	L	3	AC1	C7B-C5B-C6B-O6B
2	M	3	AC1	C2B-C1B-N4A-C4
2	E	2	GLC	C4-C5-C6-O6
2	K	2	GLC	C4-C5-C6-O6
2	E	2	GLC	O5-C5-C6-O6
2	H	1	GLC	O5-C5-C6-O6
2	H	2	GLC	C4-C5-C6-O6
2	M	1	GLC	O5-C5-C6-O6
2	K	2	GLC	O5-C5-C6-O6
2	H	1	GLC	C4-C5-C6-O6
2	E	1	GLC	C4-C5-C6-O6
2	H	2	GLC	O5-C5-C6-O6
2	M	1	GLC	C4-C5-C6-O6
2	M	2	GLC	O5-C5-C6-O6
2	B	2	GLC	O5-C5-C6-O6
2	D	2	GLC	C4-C5-C6-O6
2	E	1	GLC	O5-C5-C6-O6
2	G	1	GLC	O5-C5-C6-O6
2	I	2	GLC	O5-C5-C6-O6
2	G	2	GLC	C4-C5-C6-O6
2	M	2	GLC	C4-C5-C6-O6
2	I	3	AC1	C2B-C1B-N4A-C4
2	B	3	AC1	C5-C4-N4A-C1B
2	G	3	AC1	C5-C4-N4A-C1B
2	J	3	AC1	C3-C4-N4A-C1B

Continued on next page...

Continued from previous page...

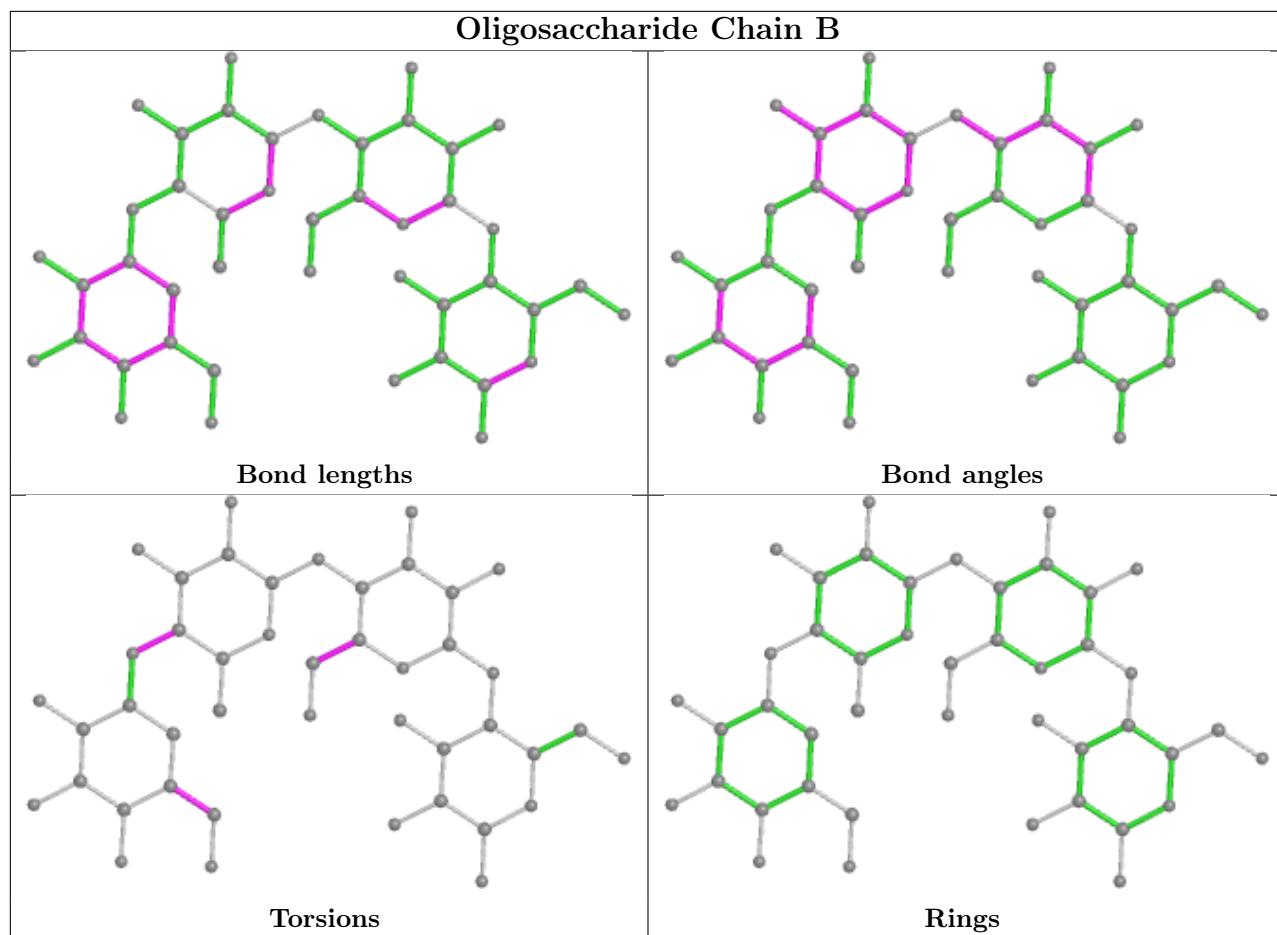
Mol	Chain	Res	Type	Atoms
2	M	3	AC1	C5-C4-N4A-C1B
2	E	3	AC1	C7B-C5B-C6B-O6B
2	F	3	AC1	C7B-C5B-C6B-O6B
2	G	2	GLC	O5-C5-C6-O6
2	G	3	AC1	C2B-C1B-N4A-C4
2	B	2	GLC	C4-C5-C6-O6
2	I	3	AC1	C3-C4-N4A-C1B
2	L	3	AC1	C5-C4-N4A-C1B
2	L	3	AC1	C4A-C5B-C6B-O6B
2	F	1	GLC	O5-C5-C6-O6
2	M	3	AC1	C7B-C5B-C6B-O6B

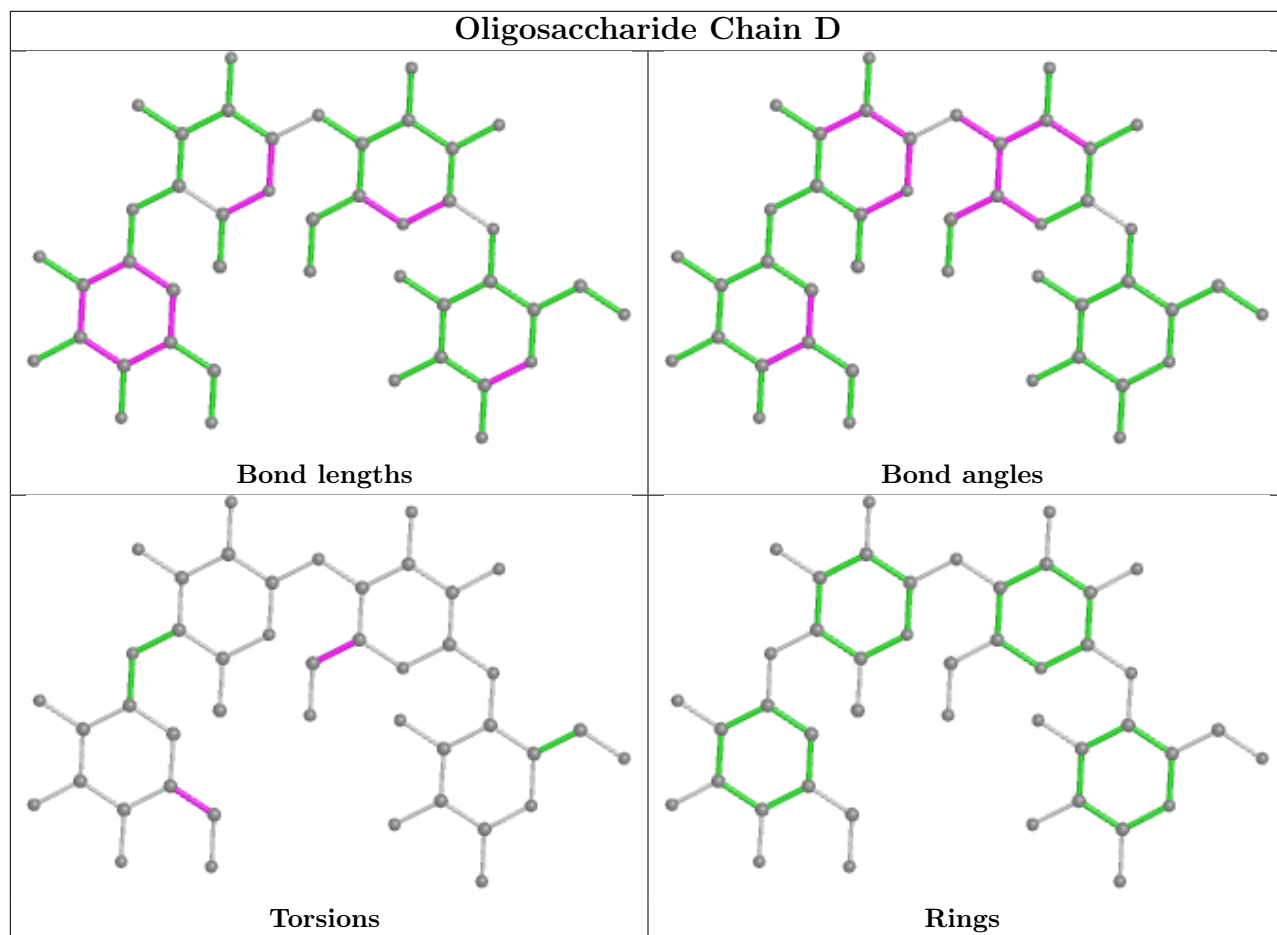
There are no ring outliers.

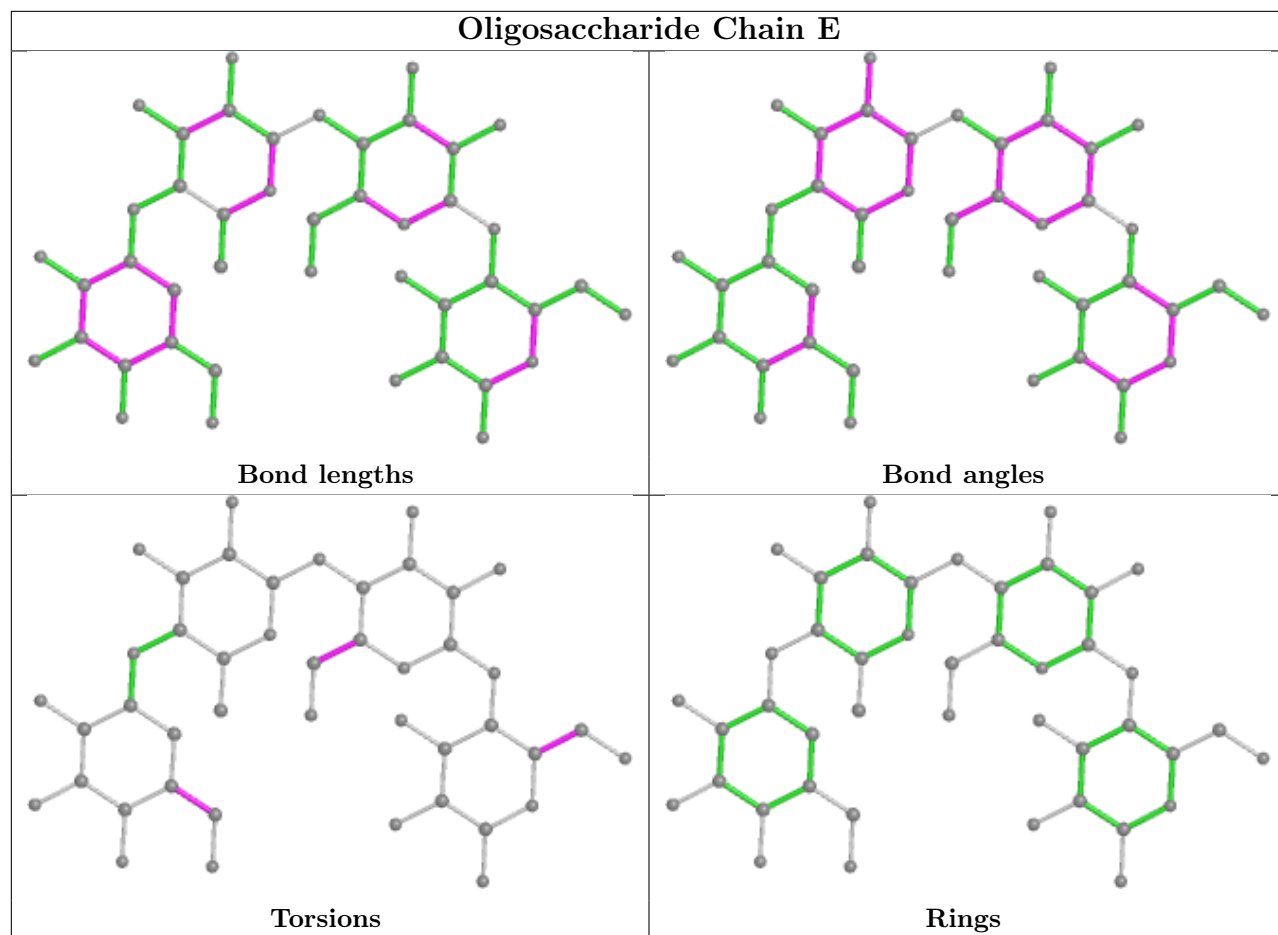
6 monomers are involved in 6 short contacts:

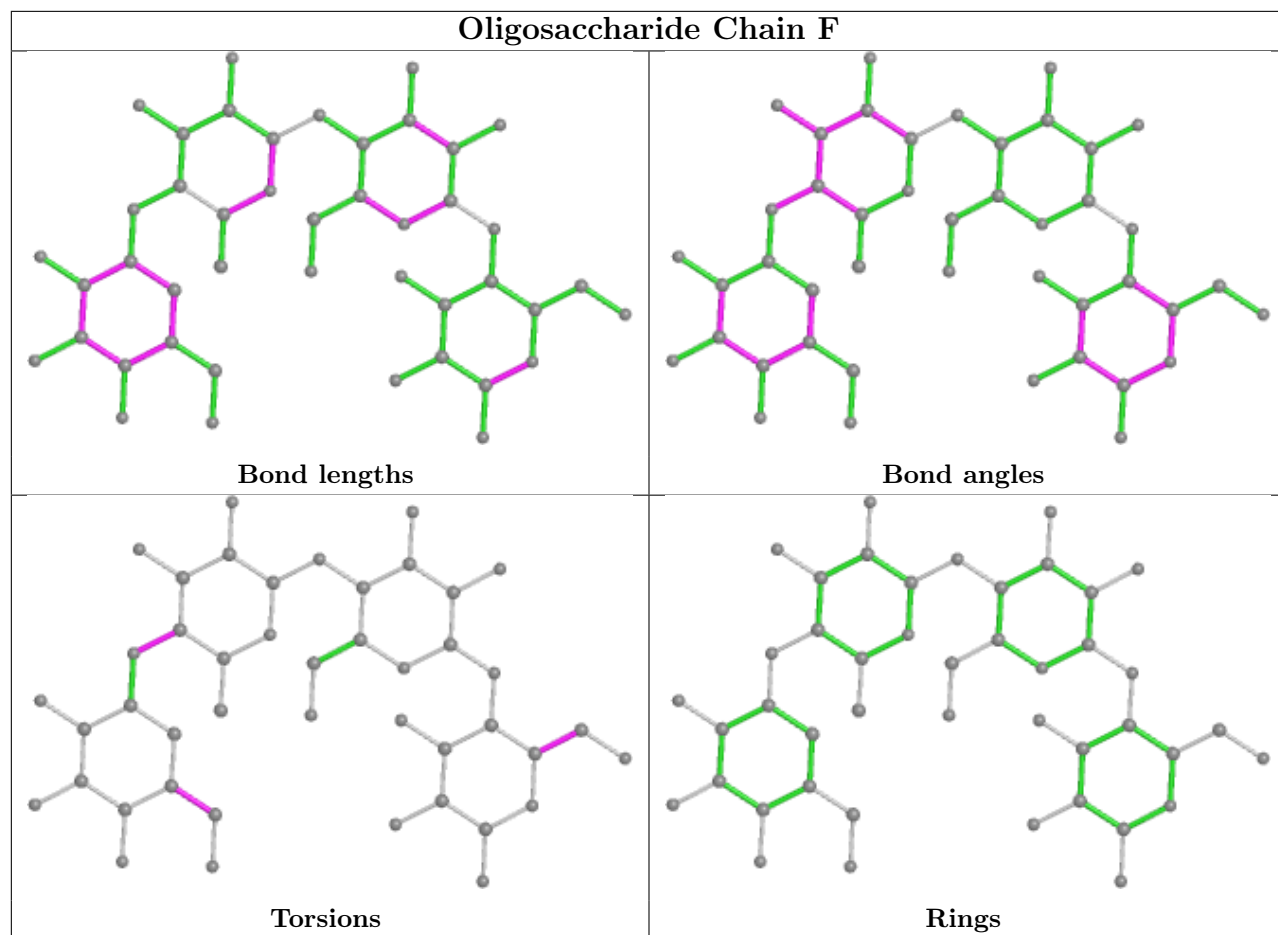
Mol	Chain	Res	Type	Clashes	Symm-Clashes
2	K	2	GLC	2	0
2	B	3	AC1	0	1
2	E	2	GLC	1	0
2	B	2	GLC	1	0
2	E	1	GLC	1	0
2	I	3	AC1	1	0

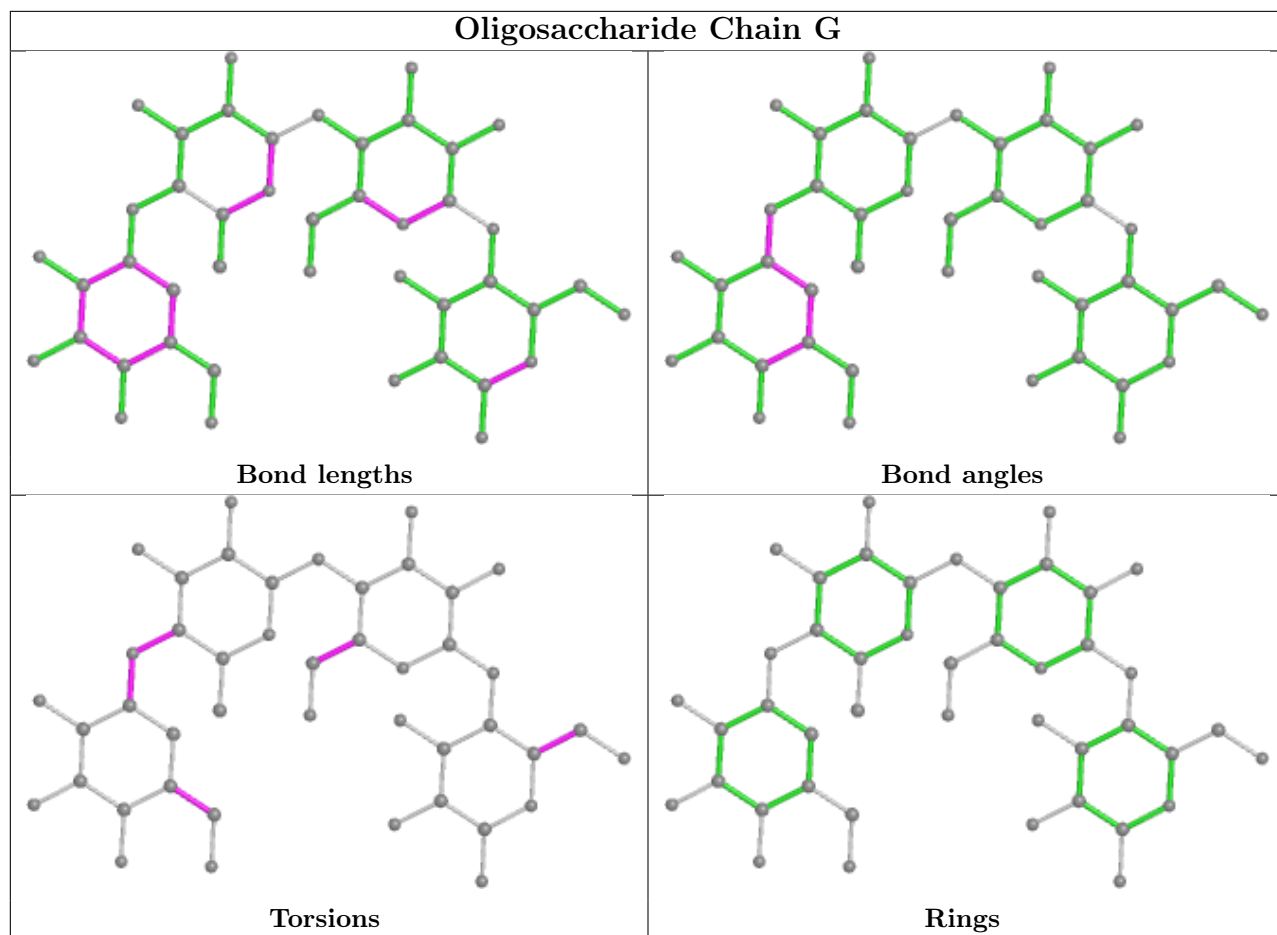
The following is a two-dimensional graphical depiction of Mogul quality analysis of bond lengths, bond angles, torsion angles, and ring geometry for oligosaccharide.

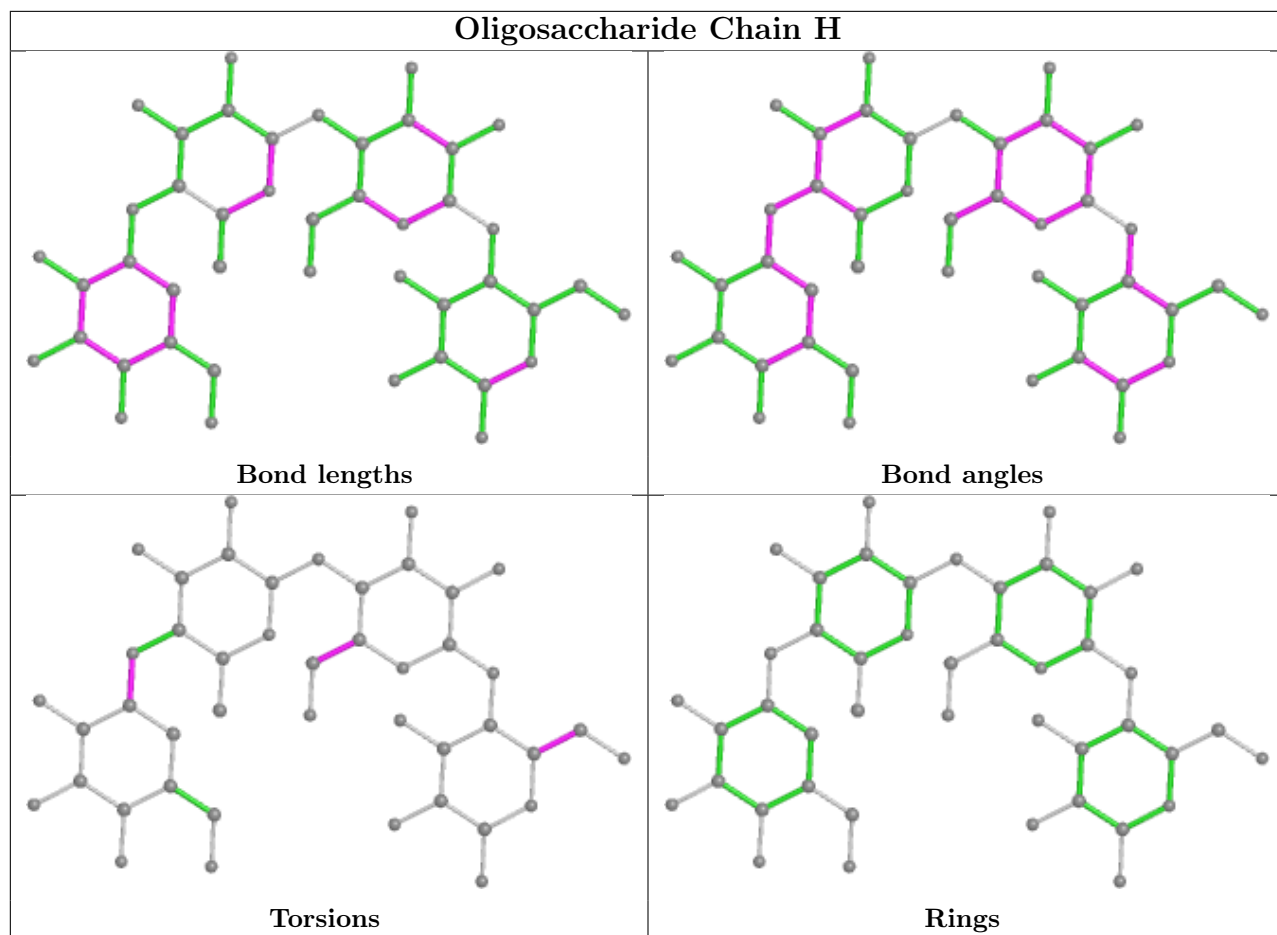


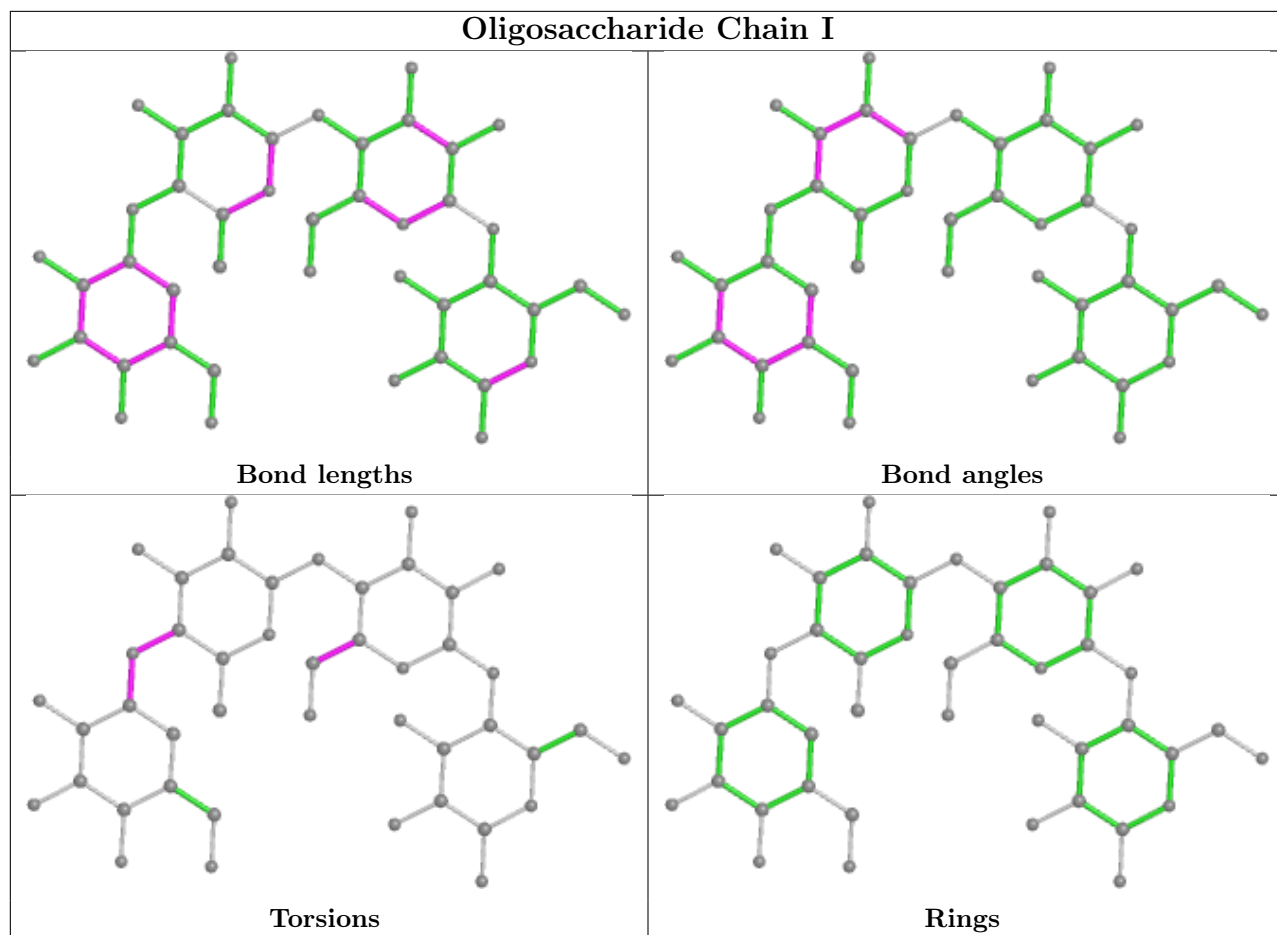


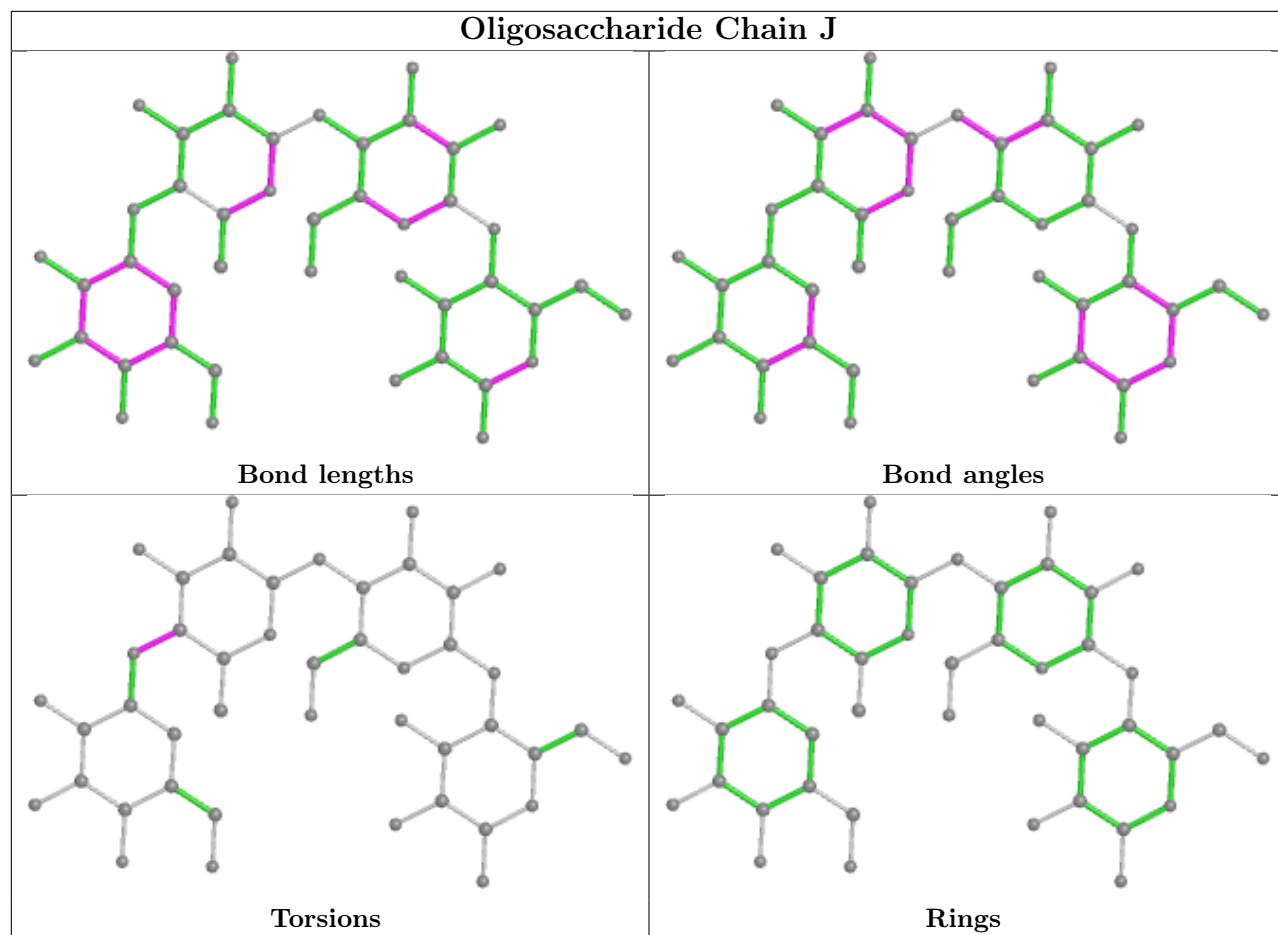


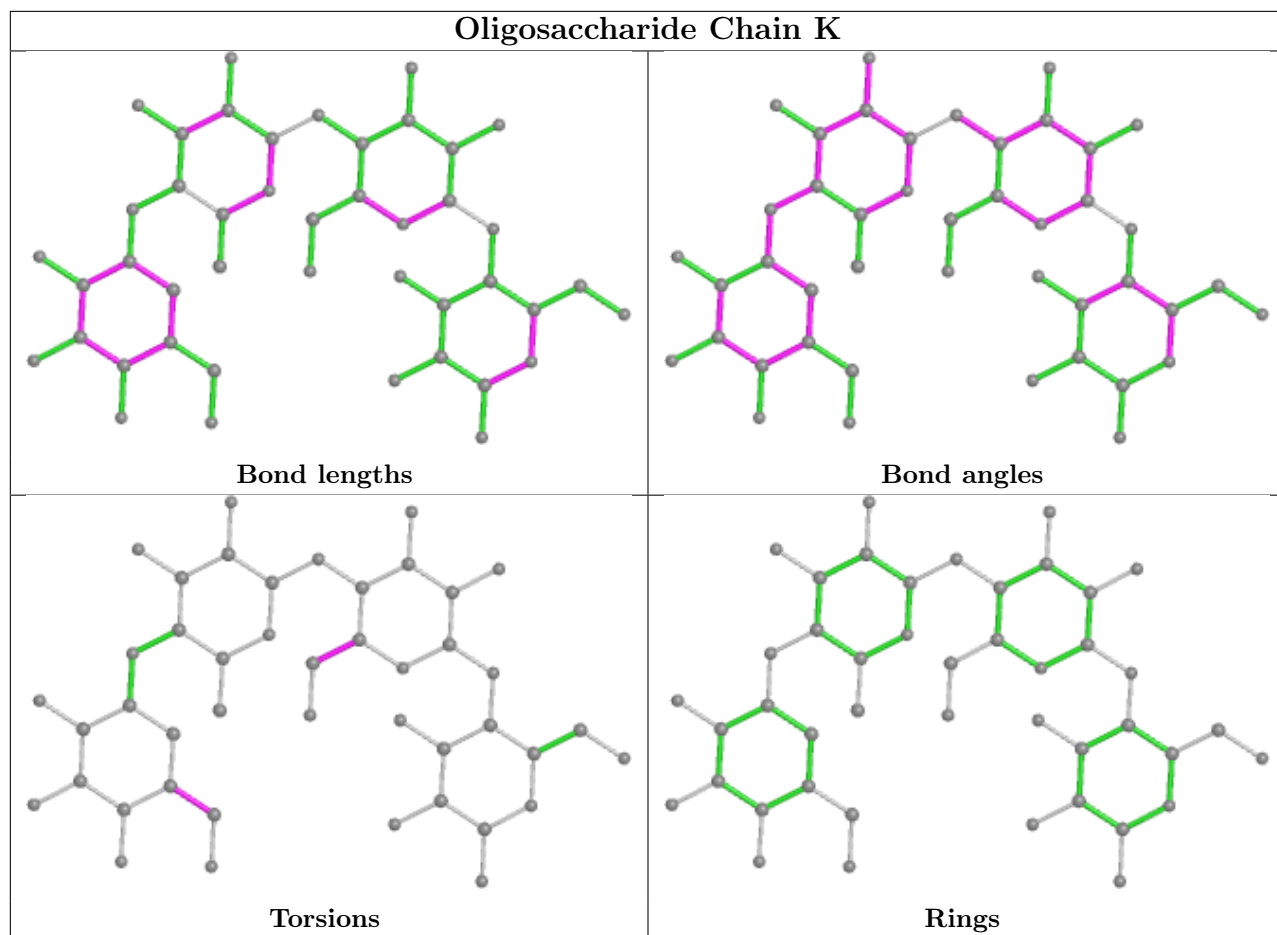


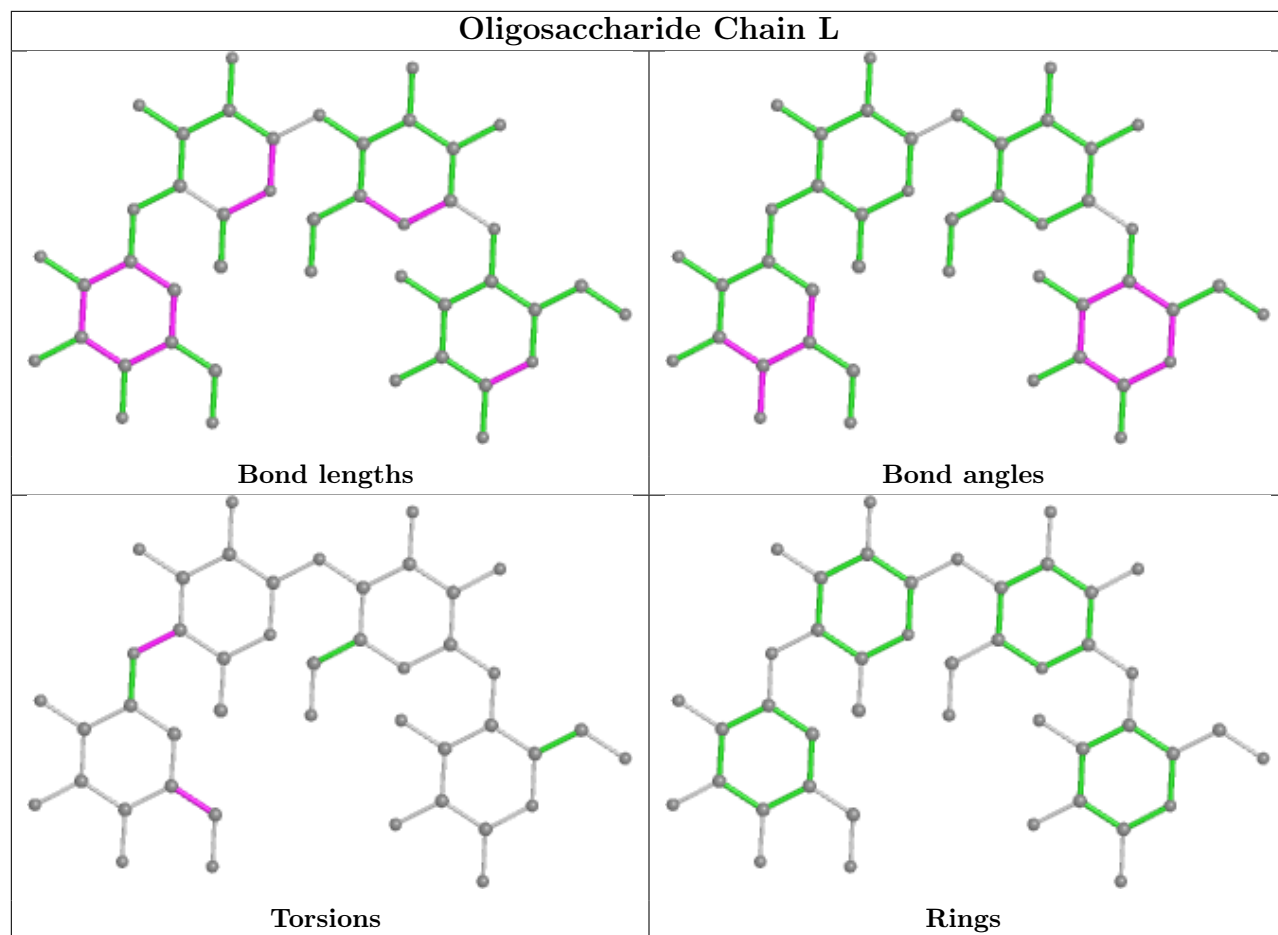


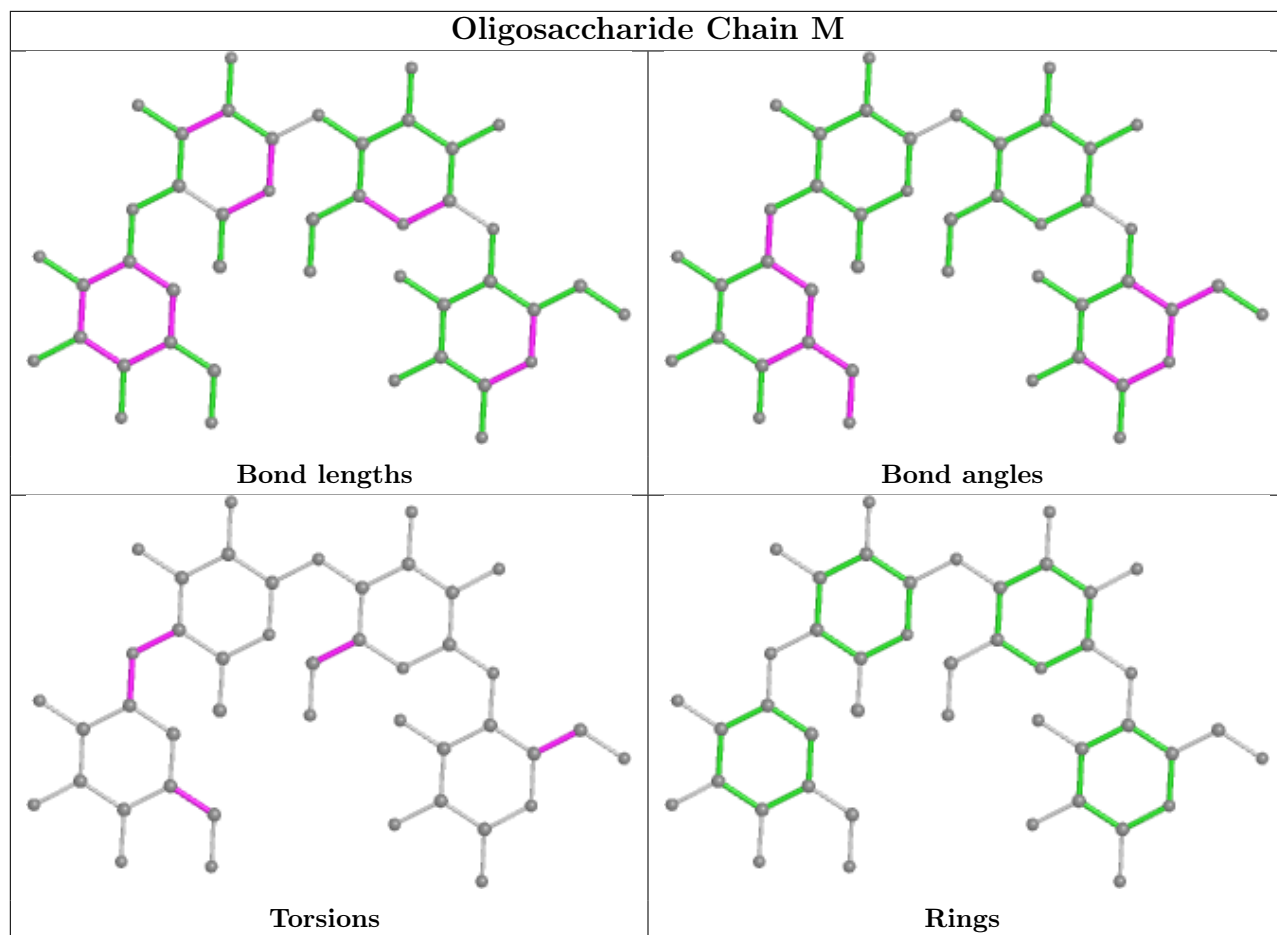












5.6 Ligand geometry [i](#)

Of 8 ligands modelled in this entry, 8 are monoatomic - leaving 0 for Mogul analysis.

There are no bond length outliers.

There are no bond angle outliers.

There are no chirality outliers.

There are no torsion outliers.

There are no ring outliers.

No monomer is involved in short contacts.

5.7 Other polymers [i](#)

There are no such residues in this entry.

5.8 Polymer linkage issues

There are no chain breaks in this entry.

6 Fit of model and data [i](#)

6.1 Protein, DNA and RNA chains [i](#)

In the following table, the column labelled '#RSRZ > 2' contains the number (and percentage) of RSRZ outliers, followed by percent RSRZ outliers for the chain as percentile scores relative to all X-ray entries and entries of similar resolution. The OWAB column contains the minimum, median, 95th percentile and maximum values of the occupancy-weighted average B-factor per residue. The column labelled 'Q < 0.9' lists the number of (and percentage) of residues with an average occupancy less than 0.9.

Mol	Chain	Analysed	<RSRZ>	#RSRZ>2	OWAB(Å ²)	Q<0.9
1	A	482/542 (88%)	-0.24	4 (0%) 86 85	25, 37, 53, 77	0
1	C	483/542 (89%)	-0.29	5 (1%) 82 81	23, 33, 47, 81	0
All	All	965/1084 (89%)	-0.27	9 (0%) 84 83	23, 35, 51, 81	0

All (9) RSRZ outliers are listed below:

Mol	Chain	Res	Type	RSRZ
1	C	485	THR	6.4
1	A	3	PRO	3.8
1	C	484	LYS	3.5
1	C	417	THR	3.5
1	C	420	PRO	3.3
1	C	3	PRO	3.3
1	A	4	PHE	3.3
1	A	420	PRO	2.1
1	A	421	GLY	2.0

6.2 Non-standard residues in protein, DNA, RNA chains [i](#)

There are no non-standard protein/DNA/RNA residues in this entry.

6.3 Carbohydrates [i](#)

In the following table, the Atoms column lists the number of modelled atoms in the group and the number defined in the chemical component dictionary. The B-factors column lists the minimum, median, 95th percentile and maximum values of B factors of atoms in the group. The column labelled 'Q < 0.9' lists the number of atoms with occupancy less than 0.9.

Mol	Type	Chain	Res	Atoms	RSCC	RSR	B-factors(Å ²)	Q<0.9
2	GLC	K	1	12/12	0.49	0.51	85,100,105,106	0

Continued on next page...

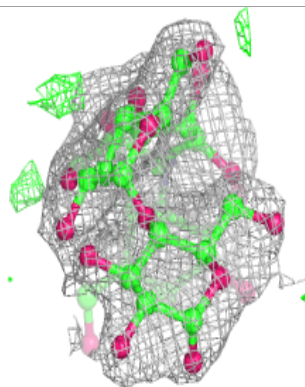
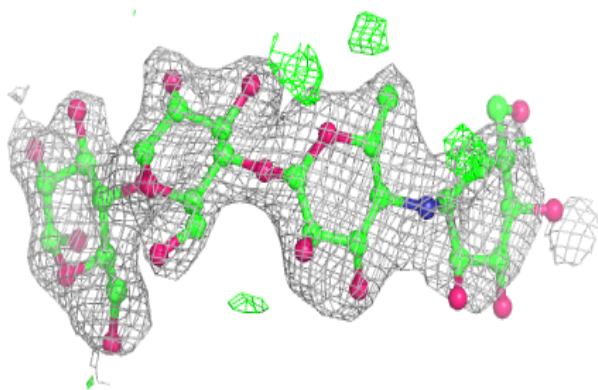
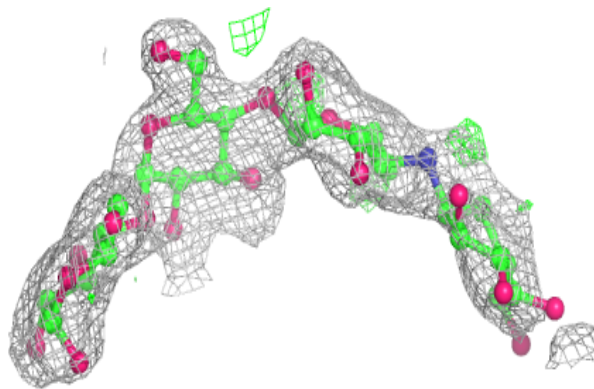
Continued from previous page...

Mol	Type	Chain	Res	Atoms	RSCC	RSR	B-factors(Å ²)	Q<0.9
2	AC1	K	3	21/22	0.49	0.40	69,92,101,104	0
2	AC1	D	3	21/22	0.66	0.48	65,85,91,93	0
2	AC1	E	3	21/22	0.74	0.26	56,73,79,84	0
2	AC1	F	3	21/22	0.74	0.47	69,76,88,90	0
2	GLC	E	1	12/12	0.75	0.27	72,82,88,94	0
2	GLC	K	2	11/12	0.80	0.26	76,84,90,96	0
2	GLC	H	1	12/12	0.80	0.22	61,68,78,79	0
2	AC1	J	3	21/22	0.83	0.31	53,76,83,90	0
2	AC1	B	3	21/22	0.83	0.18	52,72,82,87	0
2	AC1	I	3	21/22	0.84	0.18	52,61,73,77	0
2	GLC	I	1	12/12	0.86	0.17	57,63,68,71	0
2	GLC	G	1	12/12	0.86	0.13	42,53,58,58	0
2	GLC	B	2	11/12	0.87	0.18	54,58,64,67	0
2	GLC	E	2	11/12	0.87	0.27	78,84,92,94	0
2	GLC	F	1	12/12	0.88	0.15	48,62,67,67	0
2	GLC	M	1	12/12	0.88	0.18	57,61,66,69	0
2	AC1	H	3	21/22	0.89	0.16	31,42,59,69	0
2	GLC	J	1	12/12	0.90	0.14	43,48,58,69	0
2	GLC	D	2	11/12	0.90	0.26	45,59,66,69	0
2	GLC	D	1	12/12	0.91	0.26	57,71,80,87	0
2	GLC	B	1	12/12	0.91	0.16	48,56,64,65	0
2	GLC	H	2	11/12	0.91	0.11	33,45,49,53	0
2	GLC	J	2	11/12	0.92	0.17	31,41,51,59	0
2	GLC	L	1	12/12	0.93	0.25	46,61,70,77	0
2	GLC	I	2	11/12	0.93	0.14	40,59,62,63	0
2	GLC	G	2	11/12	0.94	0.12	37,41,49,55	0
2	GLC	L	2	11/12	0.94	0.10	30,35,39,48	0
2	AC1	L	3	21/22	0.94	0.11	27,40,55,74	0
2	AC1	G	3	21/22	0.94	0.12	32,43,64,74	0
2	AC1	M	3	21/22	0.94	0.14	37,44,63,67	0
2	GLC	F	2	11/12	0.95	0.19	42,57,63,71	0
2	GLC	M	2	11/12	0.96	0.17	41,49,69,80	0

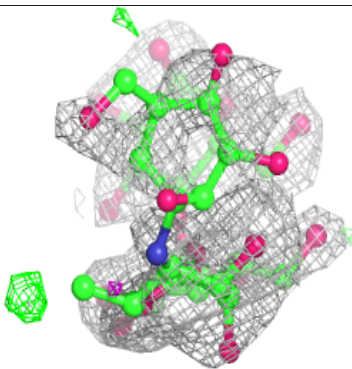
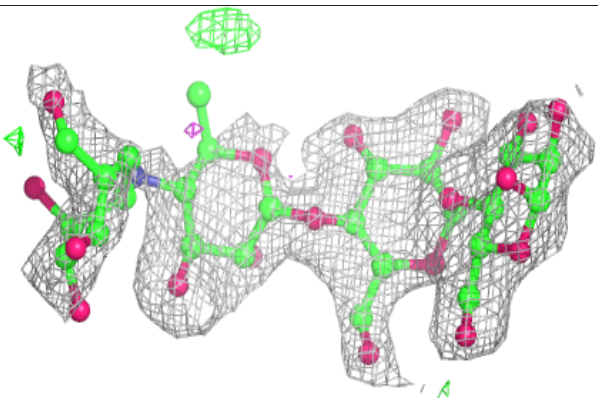
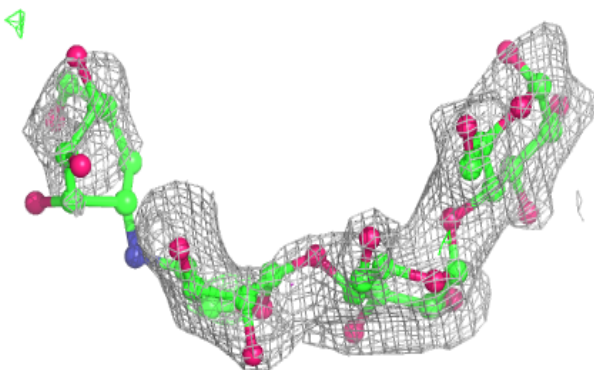
The following is a graphical depiction of the model fit to experimental electron density for oligosaccharide. Each fit is shown from different orientation to approximate a three-dimensional view.

Electron density around Chain B:

$2mF_o-DF_c$ (at 0.7 rmsd) in gray
 mF_o-DF_c (at 3 rmsd) in purple (negative)
and green (positive)

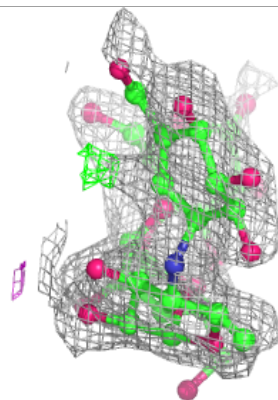
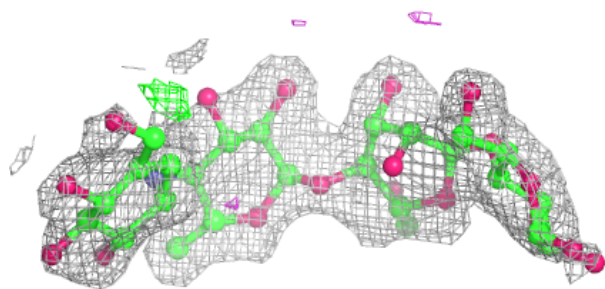
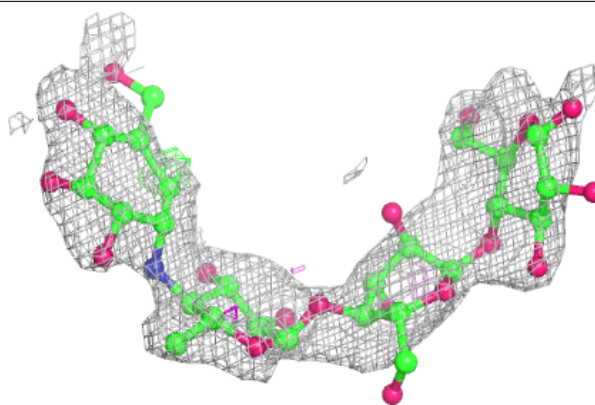
**Electron density around Chain D:**

$2mF_o-DF_c$ (at 0.7 rmsd) in gray
 mF_o-DF_c (at 3 rmsd) in purple (negative)
and green (positive)

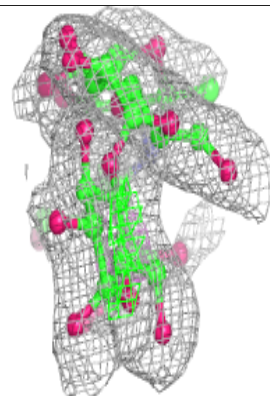
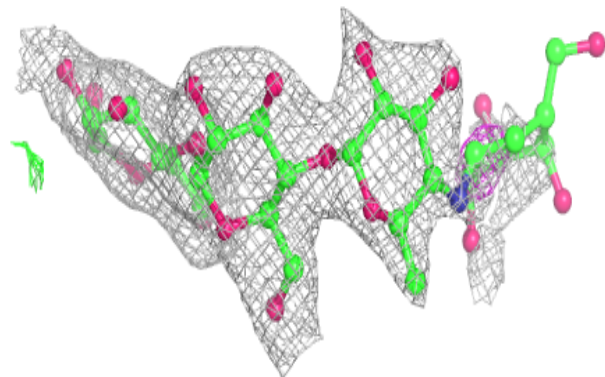
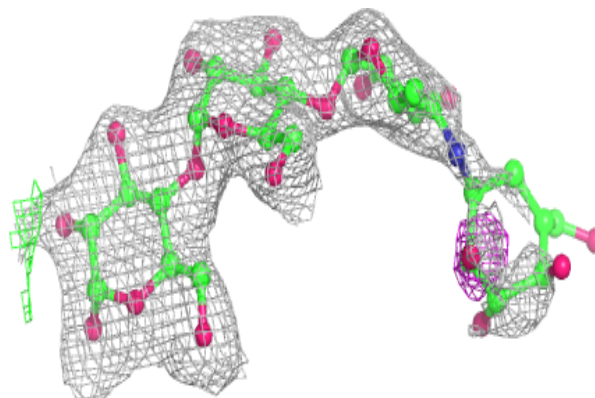


Electron density around Chain E:

$2mF_o-DF_c$ (at 0.7 rmsd) in gray
 mF_o-DF_c (at 3 rmsd) in purple (negative)
and green (positive)

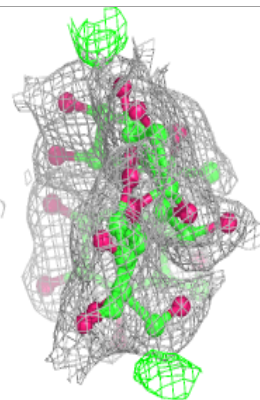
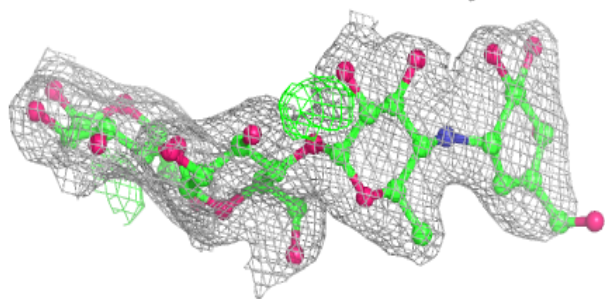
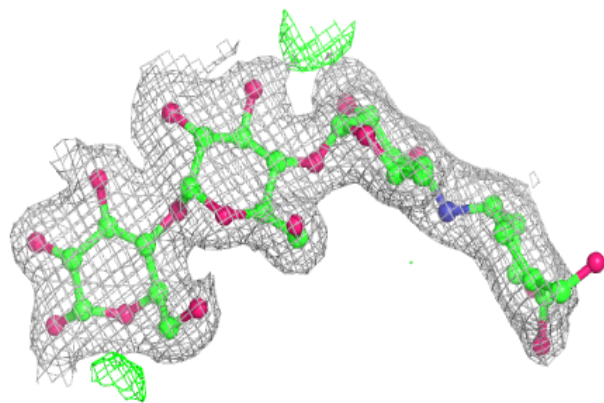
**Electron density around Chain F:**

$2mF_o-DF_c$ (at 0.7 rmsd) in gray
 mF_o-DF_c (at 3 rmsd) in purple (negative)
and green (positive)

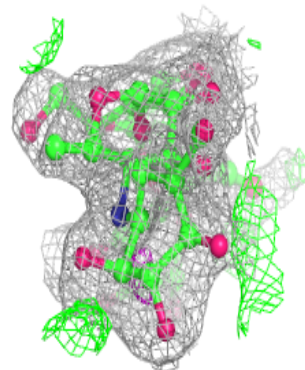
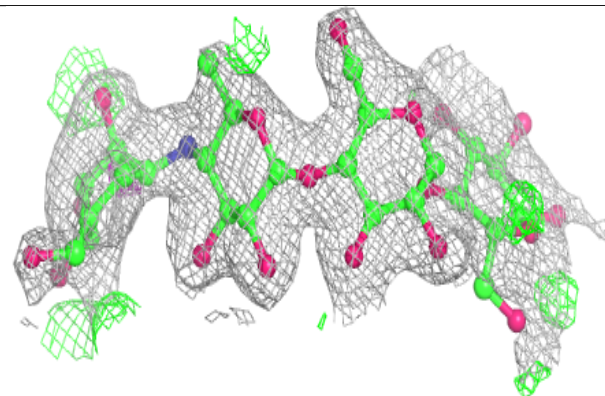
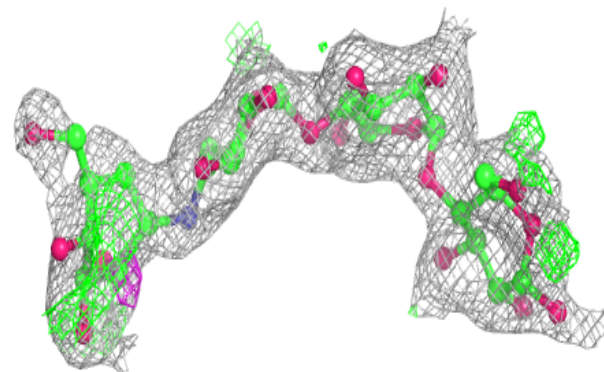


Electron density around Chain G:

$2mF_o-DF_c$ (at 0.7 rmsd) in gray
 mF_o-DF_c (at 3 rmsd) in purple (negative)
and green (positive)

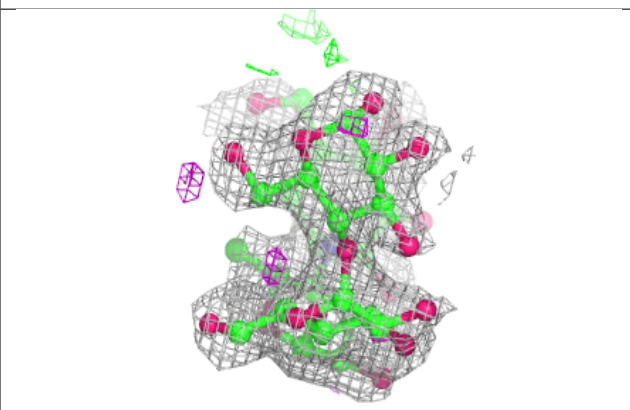
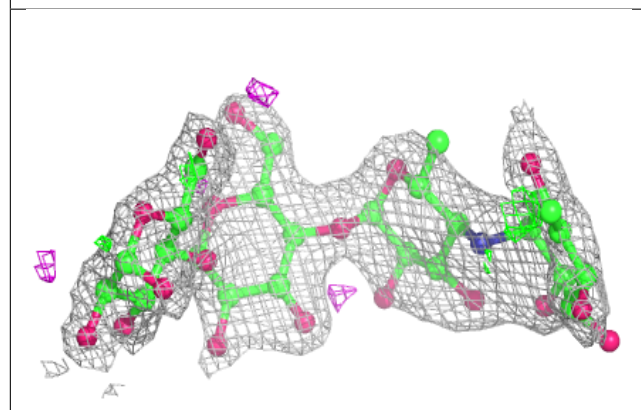
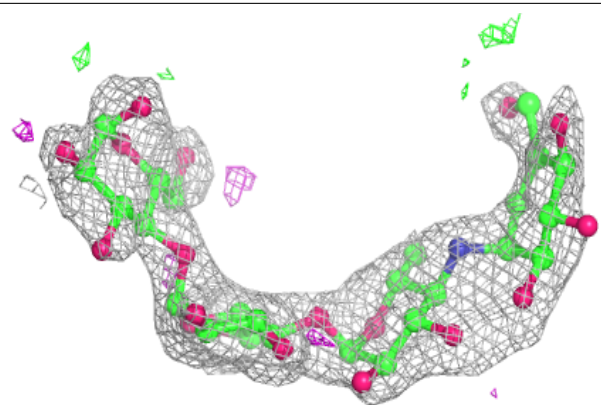
**Electron density around Chain H:**

$2mF_o-DF_c$ (at 0.7 rmsd) in gray
 mF_o-DF_c (at 3 rmsd) in purple (negative)
and green (positive)

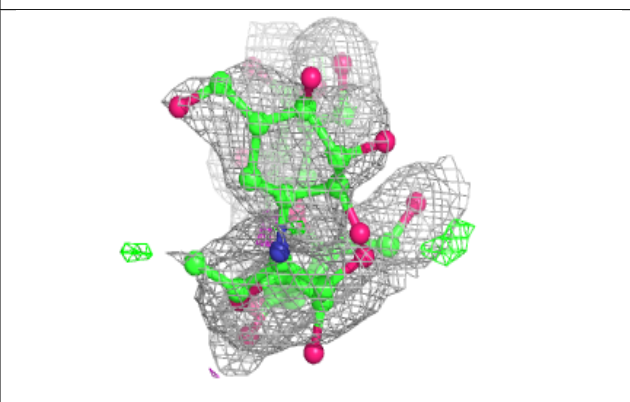
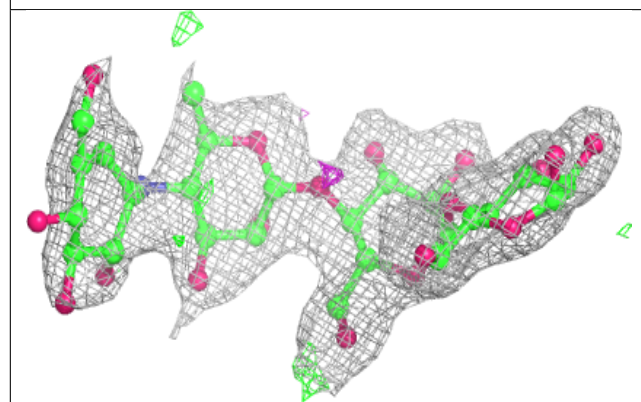
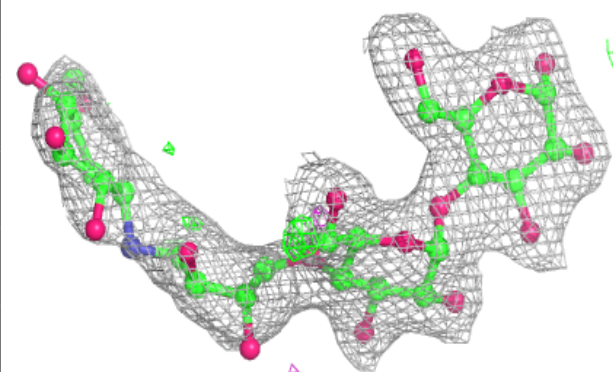


Electron density around Chain I:

$2mF_o-DF_c$ (at 0.7 rmsd) in gray
 mF_o-DF_c (at 3 rmsd) in purple (negative)
and green (positive)

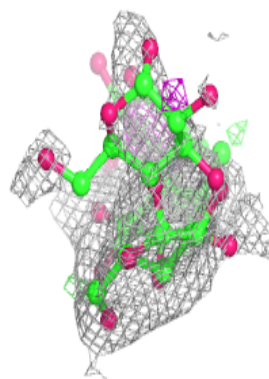
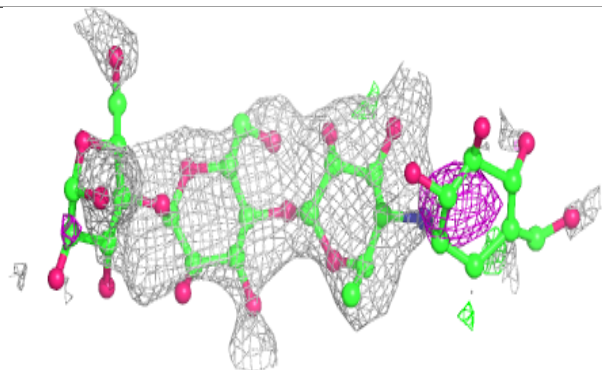
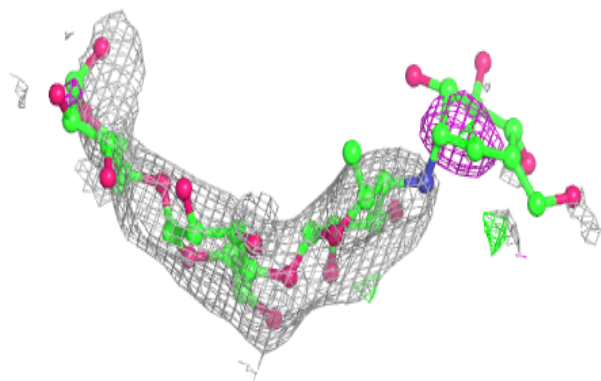
**Electron density around Chain J:**

$2mF_o-DF_c$ (at 0.7 rmsd) in gray
 mF_o-DF_c (at 3 rmsd) in purple (negative)
and green (positive)

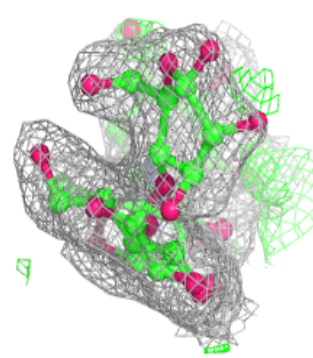
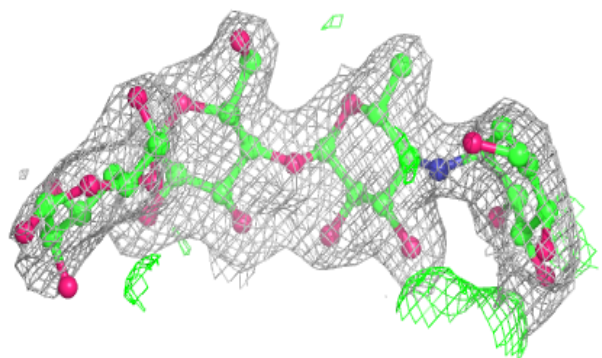
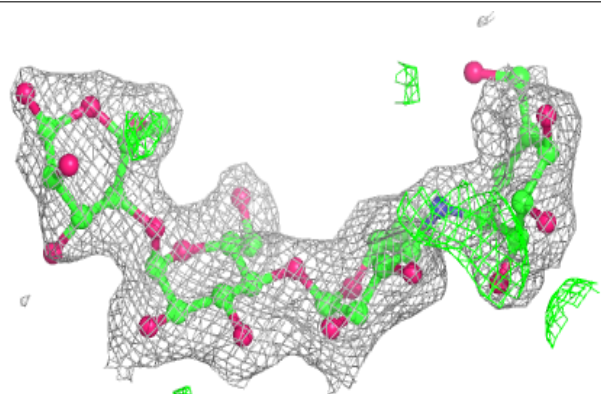


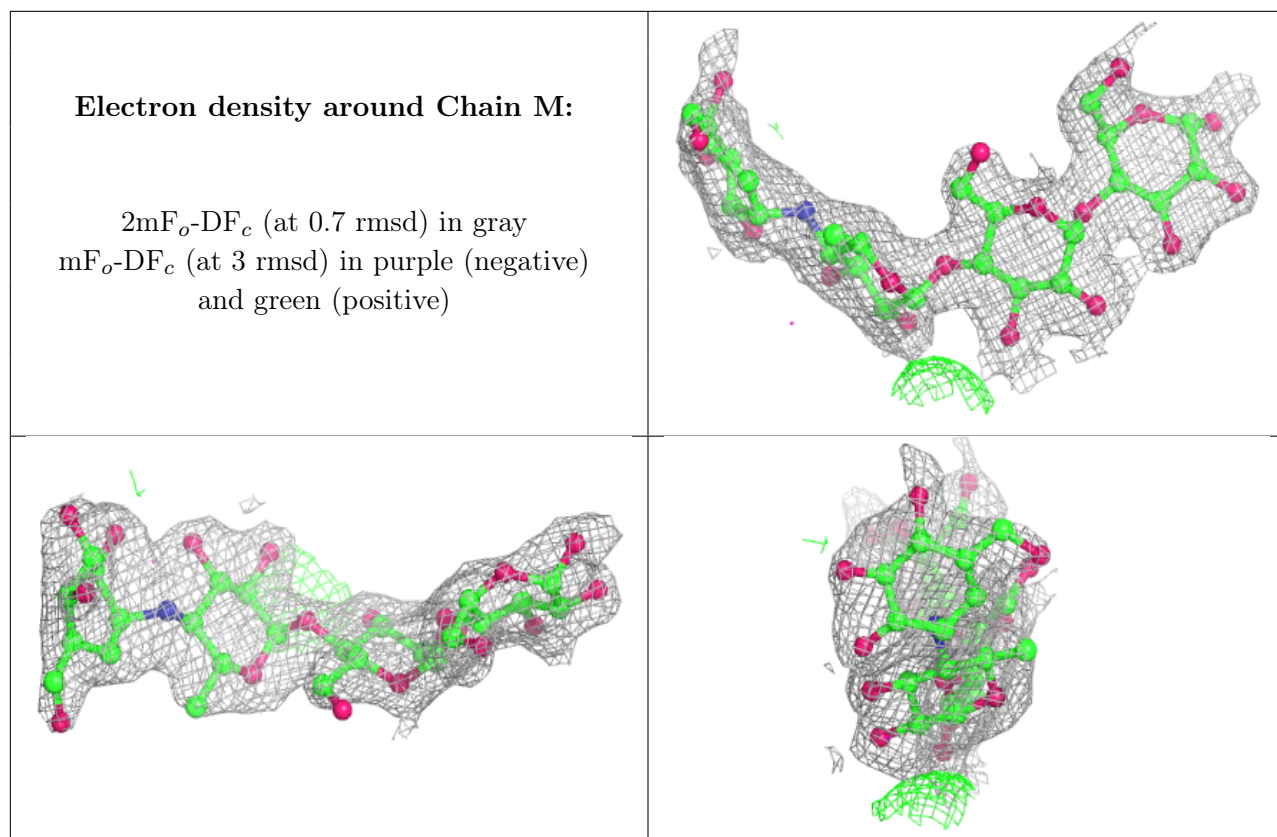
Electron density around Chain K:

$2mF_o-DF_c$ (at 0.7 rmsd) in gray
 mF_o-DF_c (at 3 rmsd) in purple (negative)
and green (positive)

**Electron density around Chain L:**

$2mF_o-DF_c$ (at 0.7 rmsd) in gray
 mF_o-DF_c (at 3 rmsd) in purple (negative)
and green (positive)





6.4 Ligands [i](#)

In the following table, the Atoms column lists the number of modelled atoms in the group and the number defined in the chemical component dictionary. The B-factors column lists the minimum, median, 95th percentile and maximum values of B factors of atoms in the group. The column labelled 'Q< 0.9' lists the number of atoms with occupancy less than 0.9.

Mol	Type	Chain	Res	Atoms	RSCC	RSR	B-factors(Å ²)	Q<0.9
3	CA	A	604	1/1	0.97	0.06	53,53,53,53	0
3	CA	C	604	1/1	0.97	0.06	46,46,46,46	0
3	CA	C	601	1/1	0.98	0.11	29,29,29,29	0
3	CA	C	603	1/1	0.98	0.14	29,29,29,29	0
3	CA	A	602	1/1	0.98	0.07	31,31,31,31	0
3	CA	A	601	1/1	0.99	0.06	32,32,32,32	0
3	CA	A	603	1/1	0.99	0.03	37,37,37,37	0
3	CA	C	602	1/1	1.00	0.05	40,40,40,40	0

6.5 Other polymers [i](#)

There are no such residues in this entry.