



# Full wwPDB X-ray Structure Validation Report ⓘ

Nov 8, 2022 – 06:50 pm GMT

PDB ID : 8AHM  
Title : Crystal structure of tubulin in complex with C(13)/C(13')-Bis-Desmethyl-Disorazole Z  
Authors : Oliva, M.A.; Diaz, J.F.; Altmann, K.H.  
Deposited on : 2022-07-22  
Resolution : 2.42 Å(reported)

This is a Full wwPDB X-ray Structure Validation Report for a publicly released PDB entry.

We welcome your comments at [validation@mail.wwpdb.org](mailto:validation@mail.wwpdb.org)

A user guide is available at

<https://www.wwpdb.org/validation/2017/XrayValidationReportHelp>

with specific help available everywhere you see the ⓘ symbol.

The types of validation reports are described at

<http://www.wwpdb.org/validation/2017/FAQs#types>.

---

The following versions of software and data (see [references ⓘ](#)) were used in the production of this report:

MolProbity : 4.02b-467  
Mogul : 1.8.4, CSD as541be (2020)  
Xtriage (Phenix) : 1.13  
EDS : 2.31.2  
buster-report : 1.1.7 (2018)  
Percentile statistics : 20191225.v01 (using entries in the PDB archive December 25th 2019)  
Refmac : 5.8.0267  
CCP4 : 7.1.010 (Gargrove)  
Ideal geometry (proteins) : Engh & Huber (2001)  
Ideal geometry (DNA, RNA) : Parkinson et al. (1996)  
Validation Pipeline (wwPDB-VP) : 2.31.2

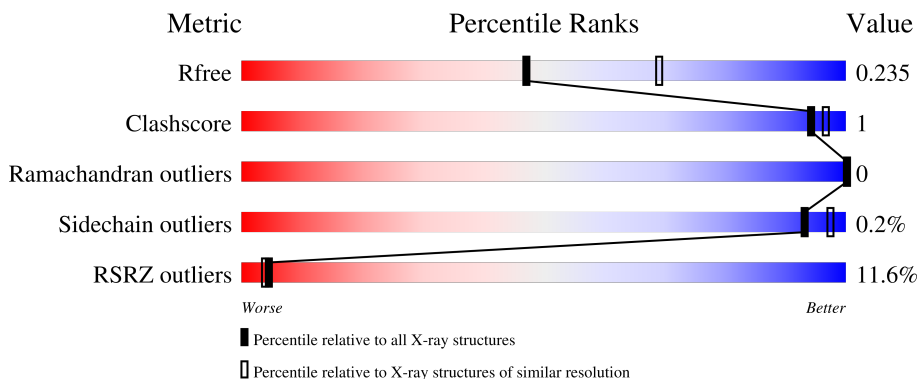
# 1 Overall quality at a glance i

The following experimental techniques were used to determine the structure:

*X-RAY DIFFRACTION*

The reported resolution of this entry is 2.42 Å.

Percentile scores (ranging between 0-100) for global validation metrics of the entry are shown in the following graphic. The table shows the number of entries on which the scores are based.



Metric	Whole archive (#Entries)	Similar resolution (#Entries, resolution range(Å))
$R_{free}$	130704	4647 (2.44-2.40)
Clashscore	141614	5161 (2.44-2.40)
Ramachandran outliers	138981	5073 (2.44-2.40)
Sidechain outliers	138945	5074 (2.44-2.40)
RSRZ outliers	127900	4543 (2.44-2.40)

The table below summarises the geometric issues observed across the polymeric chains and their fit to the electron density. The red, orange, yellow and green segments of the lower bar indicate the fraction of residues that contain outliers for  $\geq 3$ , 2, 1 and 0 types of geometric quality criteria respectively. A grey segment represents the fraction of residues that are not modelled. The numeric value for each fraction is indicated below the corresponding segment, with a dot representing fractions  $\leq 5\%$ . The upper red bar (where present) indicates the fraction of residues that have poor fit to the electron density. The numeric value is given above the bar.

Mol	Chain	Length	Quality of chain
1	A	451	<div style="display: flex; align-items: center;"> <div style="width: 10%; height: 10px; background-color: red; margin-right: 5px;"></div> <div style="width: 84%; height: 10px; background-color: green; margin-right: 5px;"></div> <div style="width: 5%; height: 10px; background-color: yellow; margin-right: 5px;"></div> <div style="width: 1%; height: 10px; background-color: grey;"></div> </div> <p>10% 94% 5% . .</p>
1	C	451	<div style="display: flex; align-items: center;"> <div style="width: 0%; height: 10px; background-color: red; margin-right: 5px;"></div> <div style="width: 93%; height: 10px; background-color: green; margin-right: 5px;"></div> <div style="width: 5%; height: 10px; background-color: yellow; margin-right: 5px;"></div> <div style="width: 1%; height: 10px; background-color: grey;"></div> </div> <p>% 93% 5% .</p>
2	B	445	<div style="display: flex; align-items: center;"> <div style="width: 5%; height: 10px; background-color: red; margin-right: 5px;"></div> <div style="width: 86%; height: 10px; background-color: green; margin-right: 5px;"></div> <div style="width: 5%; height: 10px; background-color: yellow; margin-right: 5px;"></div> <div style="width: 1%; height: 10px; background-color: grey;"></div> </div> <p>5% 91% . .</p>
2	D	445	<div style="display: flex; align-items: center;"> <div style="width: 15%; height: 10px; background-color: red; margin-right: 5px;"></div> <div style="width: 74%; height: 10px; background-color: green; margin-right: 5px;"></div> <div style="width: 5%; height: 10px; background-color: yellow; margin-right: 5px;"></div> <div style="width: 6%; height: 10px; background-color: grey;"></div> </div> <p>15% 89% 5% 6%</p>
3	E	189	<div style="display: flex; align-items: center;"> <div style="width: 7%; height: 10px; background-color: red; margin-right: 5px;"></div> <div style="width: 56%; height: 10px; background-color: green; margin-right: 5px;"></div> <div style="width: 36%; height: 10px; background-color: grey;"></div> </div> <p>7% 63% . 36%</p>

Continued on next page...

*Continued from previous page...*

Mol	Chain	Length	Quality of chain
4	F	384	

The following table lists non-polymeric compounds, carbohydrate monomers and non-standard residues in protein, DNA, RNA chains that are outliers for geometric or electron-density-fit criteria:

Mol	Type	Chain	Res	Chirality	Geometry	Clashes	Electron density
12	M5U	D	503	-	-	-	X

## 2 Entry composition [i](#)

There are 14 unique types of molecules in this entry. The entry contains 34568 atoms, of which 16942 are hydrogens and 0 are deuteriums.

In the tables below, the ZeroOcc column contains the number of atoms modelled with zero occupancy, the AltConf column contains the number of residues with at least one atom in alternate conformation and the Trace column contains the number of residues modelled with at most 2 atoms.

- Molecule 1 is a protein called Tubulin alpha-1B chain.

Mol	Chain	Residues	Atoms						ZeroOcc	AltConf	Trace
			Total	C	H	N	O	S			
1	A	437	Total	C	H	N	O	S	0	5	0
			6793	2175	3358	583	653	24			
1	C	440	Total	C	H	N	O	S	0	14	0
			6914	2212	3413	594	670	25			

- Molecule 2 is a protein called Tubulin beta-2B chain.

Mol	Chain	Residues	Atoms						ZeroOcc	AltConf	Trace
			Total	C	H	N	O	S			
2	B	425	Total	C	H	N	O	S	0	8	0
			6633	2120	3257	575	654	27			
2	D	420	Total	C	H	N	O	S	0	0	0
			6481	2075	3181	561	638	26			

- Molecule 3 is a protein called Stathmin-4.

Mol	Chain	Residues	Atoms						ZeroOcc	AltConf	Trace
			Total	C	H	N	O	S			
3	E	121	Total	C	H	N	O	S	0	2	0
			2036	623	1026	184	198	5			

- Molecule 4 is a protein called Tubulin tyrosine ligase.

Mol	Chain	Residues	Atoms						ZeroOcc	AltConf	Trace
			Total	C	H	N	O	S			
4	F	315	Total	C	H	N	O	S	0	2	0
			5152	1669	2567	436	465	15			

There are 6 discrepancies between the modelled and reference sequences:

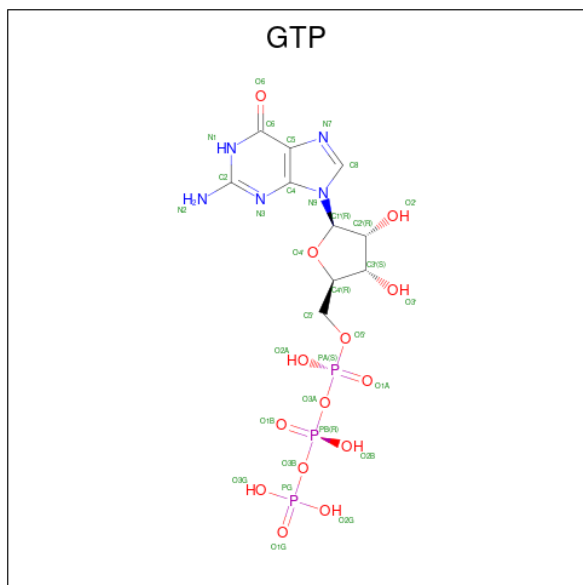
Chain	Residue	Modelled	Actual	Comment	Reference
F	379	HIS	-	expression tag	UNP E1BQ43
F	380	HIS	-	expression tag	UNP E1BQ43
F	381	HIS	-	expression tag	UNP E1BQ43
F	382	HIS	-	expression tag	UNP E1BQ43

*Continued on next page...*

Continued from previous page...

Chain	Residue	Modelled	Actual	Comment	Reference
F	383	HIS	-	expression tag	UNP E1BQ43
F	384	HIS	-	expression tag	UNP E1BQ43

- Molecule 5 is GUANOSINE-5'-TRIPHOSPHATE (three-letter code: GTP) (formula:  $C_{10}H_{16}N_5O_{14}P_3$ ).



Mol	Chain	Residues	Atoms					ZeroOcc	AltConf	
			Total	C	H	N	O			P
5	A	1	Total	C	H	N	O	P	0	0
			41	10	9	5	14	3		
5	C	1	Total	C	H	N	O	P	0	0
			41	10	9	5	14	3		

- Molecule 6 is MAGNESIUM ION (three-letter code: MG) (formula: Mg).

Mol	Chain	Residues	Atoms		ZeroOcc	AltConf
6	A	1	Total	Mg	0	0
			1	1		
6	B	1	Total	Mg	0	0
			1	1		
6	C	1	Total	Mg	0	0
			1	1		
6	D	1	Total	Mg	0	0
			1	1		
6	F	1	Total	Mg	0	0
			1	1		

- Molecule 7 is GLYCEROL (three-letter code: GOL) (formula:  $C_3H_8O_3$ ).



Mol	Chain	Residues	Atoms			ZeroOcc	AltConf	
7	A	1	Total	C	H	O	0	0
			14	3	8	3		

- Molecule 8 is CALCIUM ION (three-letter code: CA) (formula: Ca).

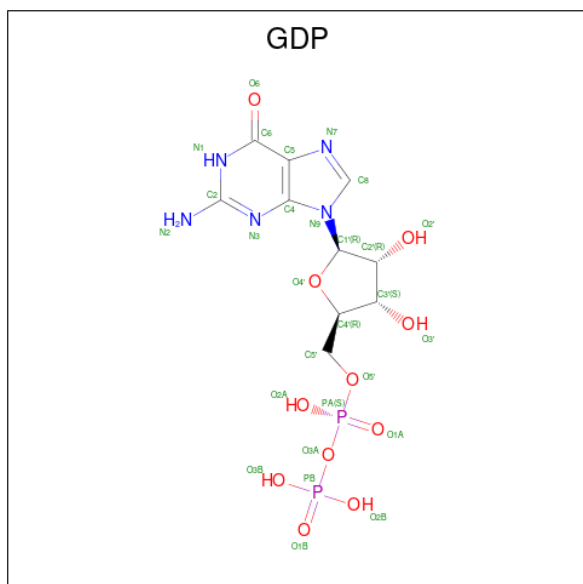
Mol	Chain	Residues	Atoms		ZeroOcc	AltConf
8	A	1	Total	Ca	0	0
			1	1		
8	B	2	Total	Ca	0	0
			2	2		
8	C	1	Total	Ca	0	0
			1	1		

- Molecule 9 is DIMETHYL SULFOXIDE (three-letter code: DMS) (formula:  $C_2H_6OS$ ).



Mol	Chain	Residues	Atoms					ZeroOcc	AltConf
			Total	C	H	O	S		
9	A	1	Total	C	H	O	S	0	0
			10	2	6	1	1		
9	C	1	Total	C	H	O	S	0	0
			10	2	6	1	1		

- Molecule 10 is GUANOSINE-5'-DIPHOSPHATE (three-letter code: GDP) (formula:  $C_{10}H_{15}N_5O_{11}P_2$ ).



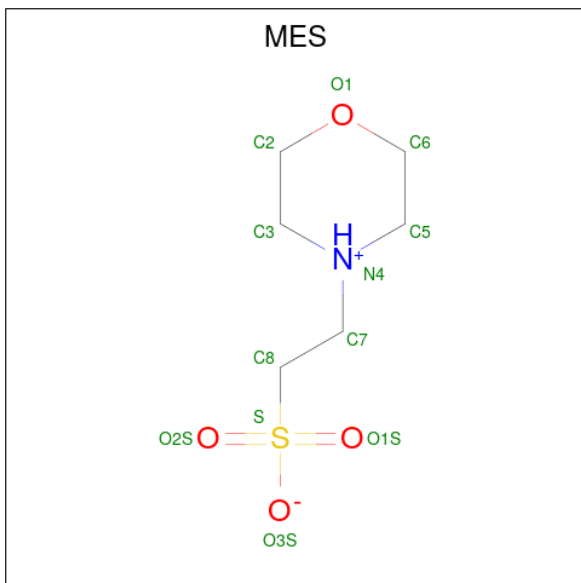
Mol	Chain	Residues	Atoms					ZeroOcc	AltConf	
			Total	C	H	N	O			P
10	B	1	Total	C	H	N	O	P	0	0
			38	10	10	5	11	2		

*Continued on next page...*

Continued from previous page...

Mol	Chain	Residues	Atoms					ZeroOcc	AltConf	
			Total	C	H	N	O			P
10	D	1	38	10	10	5	11	2	0	0

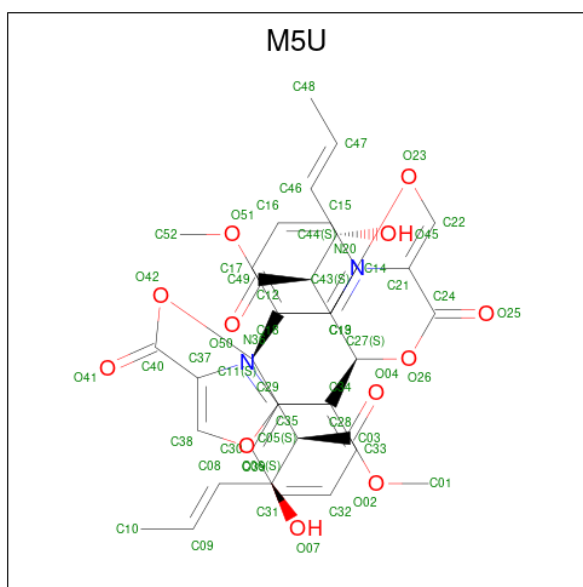
- Molecule 11 is 2-(N-MORPHOLINO)-ETHANESULFONIC ACID (three-letter code: MES) (formula: C<sub>6</sub>H<sub>13</sub>NO<sub>4</sub>S).



Mol	Chain	Residues	Atoms					ZeroOcc	AltConf	
			Total	C	H	N	O			S
11	B	1	25	6	13	1	4	1	0	0
11	B	1	25	6	13	1	4	1	0	0

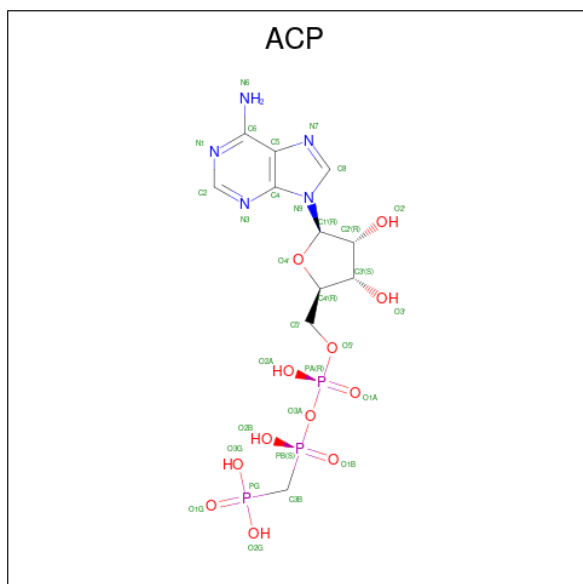
- Molecule 12 is dimethyl 2,2'-((12Z,122Z,4S,6Z,8E,10E,15S,17Z,19E,21E)-2,13-dioxo-3,14-dioxo-1(4,2),12(2,4)-dioxazolacyclodocosaphane-6,8,10,17,19,21-hexaene-4,15-diyl)(2S,2'S,3S,3'S,4E,4'E)-bis(3-hydroxyhex-4-enoate) (three-letter code: M5U) (formula: C<sub>38</sub>H<sub>42</sub>N<sub>2</sub>O<sub>12</sub>) (labeled as "Ligand of Interest" by depositor).





Mol	Chain	Residues	Atoms					ZeroOcc	AltConf
			Total	C	H	N	O		
12	D	1	94	38	42	2	12	0	0

- Molecule 13 is PHOSPHOMETHYLPHOSPHONIC ACID ADENYLATE ESTER (three-letter code: ACP) (formula:  $C_{11}H_{18}N_5O_{12}P_3$ ).



Mol	Chain	Residues	Atoms					ZeroOcc	AltConf	
			Total	C	H	N	O			P
13	F	1	45	11	14	5	12	3	0	0

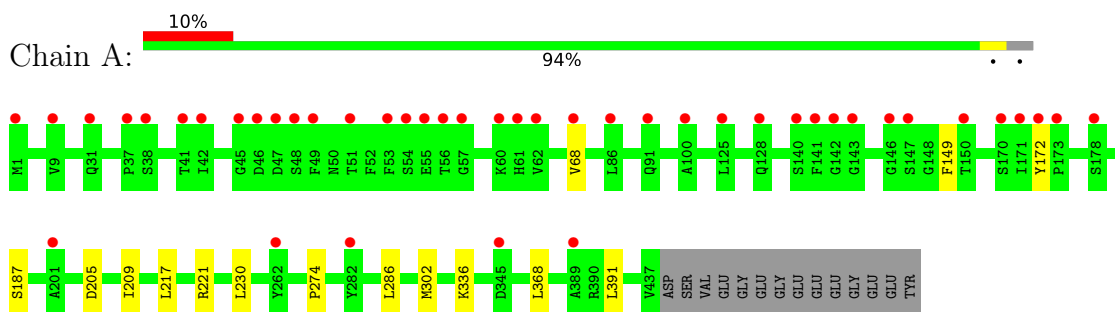
- Molecule 14 is water.

Mol	Chain	Residues	Atoms		ZeroOcc	AltConf
14	A	33	Total 33	O 33	0	0
14	B	32	Total 32	O 32	0	0
14	C	80	Total 80	O 80	0	0
14	D	13	Total 13	O 13	0	0
14	E	2	Total 2	O 2	0	0
14	F	9	Total 9	O 9	0	0

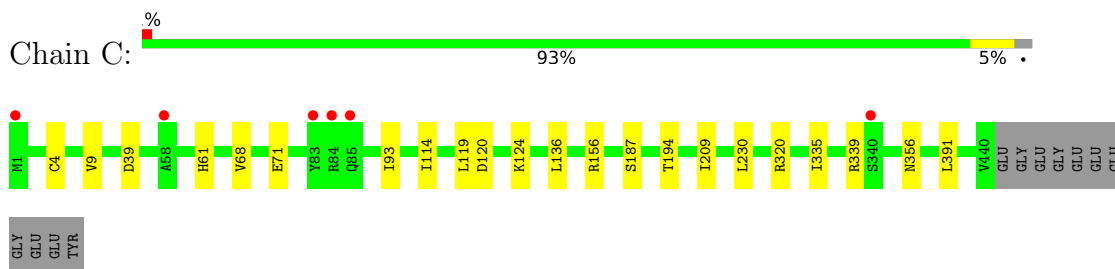
### 3 Residue-property plots [i](#)

These plots are drawn for all protein, RNA, DNA and oligosaccharide chains in the entry. The first graphic for a chain summarises the proportions of the various outlier classes displayed in the second graphic. The second graphic shows the sequence view annotated by issues in geometry and electron density. Residues are color-coded according to the number of geometric quality criteria for which they contain at least one outlier: green = 0, yellow = 1, orange = 2 and red = 3 or more. A red dot above a residue indicates a poor fit to the electron density ( $RSRZ > 2$ ). Stretches of 2 or more consecutive residues without any outlier are shown as a green connector. Residues present in the sample, but not in the model, are shown in grey.

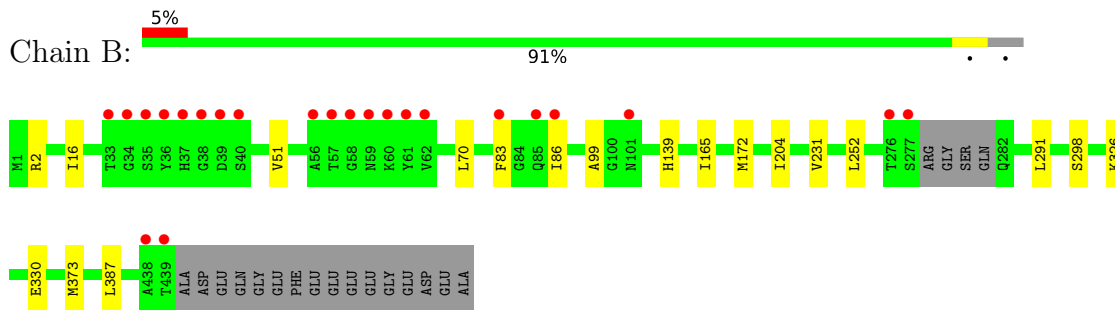
- Molecule 1: Tubulin alpha-1B chain



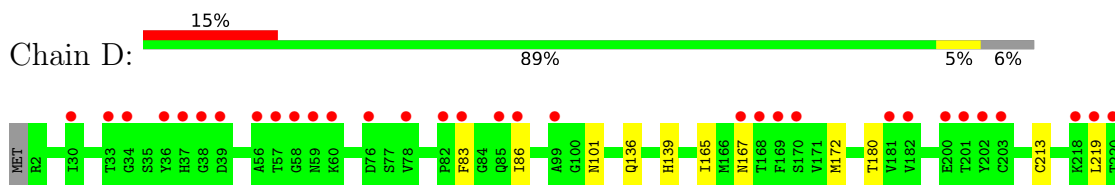
- Molecule 1: Tubulin alpha-1B chain

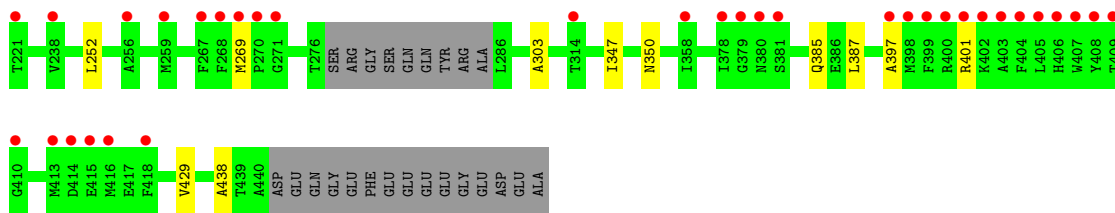


- Molecule 2: Tubulin beta-2B chain

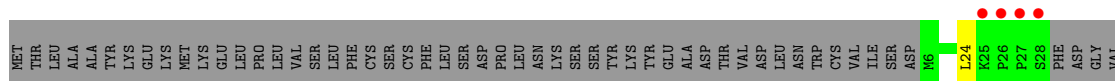


- Molecule 2: Tubulin beta-2B chain

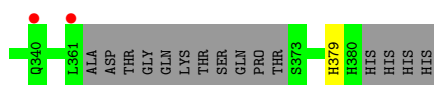
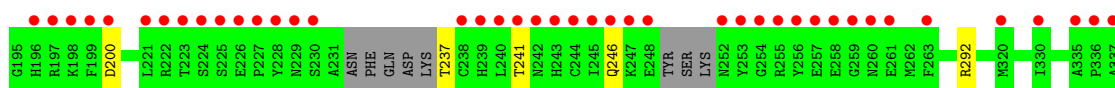
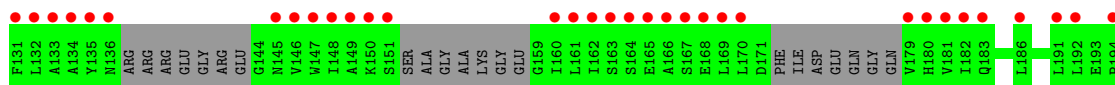
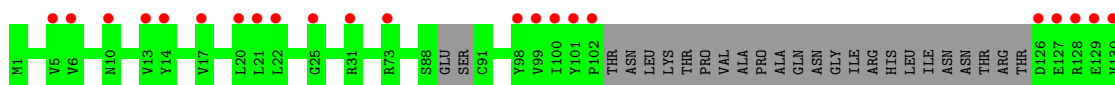
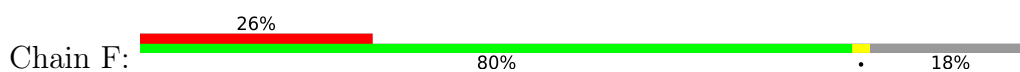




- Molecule 3: Stathmin-4



- Molecule 4: Tubulin tyrosine ligase



## 4 Data and refinement statistics

Property	Value	Source
Space group	P 21 21 21	Depositor
Cell constants a, b, c, $\alpha$ , $\beta$ , $\gamma$	105.05Å 157.80Å 181.89Å 90.00° 90.00° 90.00°	Depositor
Resolution (Å)	49.84 – 2.42 49.84 – 2.42	Depositor EDS
% Data completeness (in resolution range)	99.8 (49.84-2.42) 99.8 (49.84-2.42)	Depositor EDS
$R_{merge}$	0.09	Depositor
$R_{sym}$	(Not available)	Depositor
$\langle I/\sigma(I) \rangle$ <sup>1</sup>	1.80 (at 2.42Å)	Xtriage
Refinement program	PHENIX 1.19.1	Depositor
R, $R_{free}$	0.200 , 0.241 0.195 , 0.235	Depositor DCC
$R_{free}$ test set	5708 reflections (4.94%)	wwPDB-VP
Wilson B-factor (Å <sup>2</sup> )	54.0	Xtriage
Anisotropy	0.250	Xtriage
Bulk solvent $k_{sol}$ (e/Å <sup>3</sup> ), $B_{sol}$ (Å <sup>2</sup> )	(Not available) , (Not available)	EDS
L-test for twinning <sup>2</sup>	$\langle  L  \rangle = 0.50$ , $\langle L^2 \rangle = 0.34$	Xtriage
Estimated twinning fraction	No twinning to report.	Xtriage
$F_o, F_c$ correlation	0.94	EDS
Total number of atoms	34568	wwPDB-VP
Average B, all atoms (Å <sup>2</sup> )	66.0	wwPDB-VP

Xtriage's analysis on translational NCS is as follows: *The largest off-origin peak in the Patterson function is 2.47% of the height of the origin peak. No significant pseudotranslation is detected.*

<sup>1</sup>Intensities estimated from amplitudes.

<sup>2</sup>Theoretical values of  $\langle |L| \rangle$ ,  $\langle L^2 \rangle$  for acentric reflections are 0.5, 0.333 respectively for untwinned datasets, and 0.375, 0.2 for perfectly twinned datasets.

## 5 Model quality

### 5.1 Standard geometry

Bond lengths and bond angles in the following residue types are not validated in this section: ACP, GDP, GTP, MG, CA, DMS, MES, M5U, GOL

The Z score for a bond length (or angle) is the number of standard deviations the observed value is removed from the expected value. A bond length (or angle) with  $|Z| > 5$  is considered an outlier worth inspection. RMSZ is the root-mean-square of all Z scores of the bond lengths (or angles).

Mol	Chain	Bond lengths		Bond angles	
		RMSZ	# Z  >5	RMSZ	# Z  >5
1	A	0.24	0/3529	0.47	0/4791
1	C	0.25	0/3616	0.48	0/4913
2	B	0.25	0/3476	0.47	0/4708
2	D	0.25	0/3373	0.46	0/4570
3	E	0.24	0/1027	0.42	0/1363
4	F	0.24	0/2647	0.46	0/3572
All	All	0.25	0/17668	0.47	0/23917

There are no bond length outliers.

There are no bond angle outliers.

There are no chirality outliers.

There are no planarity outliers.

### 5.2 Too-close contacts

In the following table, the Non-H and H(model) columns list the number of non-hydrogen atoms and hydrogen atoms in the chain respectively. The H(added) column lists the number of hydrogen atoms added and optimized by MolProbity. The Clashes column lists the number of clashes within the asymmetric unit, whereas Symm-Clashes lists symmetry-related clashes.

Mol	Chain	Non-H	H(model)	H(added)	Clashes	Symm-Clashes
1	A	3435	3358	3348	8	0
1	C	3501	3413	3382	11	0
2	B	3376	3257	3225	10	0
2	D	3300	3181	3180	11	0
3	E	1010	1026	1014	1	0
4	F	2585	2567	2561	3	0
5	A	32	9	12	0	0

*Continued on next page...*

Continued from previous page...

Mol	Chain	Non-H	H(model)	H(added)	Clashes	Symm-Clashes
5	C	32	9	12	0	0
6	A	1	0	0	0	0
6	B	1	0	0	0	0
6	C	1	0	0	0	0
6	D	1	0	0	0	0
6	F	1	0	0	0	0
7	A	6	8	8	0	0
8	A	1	0	0	0	0
8	B	2	0	0	0	0
8	C	1	0	0	0	0
9	A	4	6	6	0	0
9	C	4	6	6	0	0
10	B	28	10	12	0	0
10	D	28	10	12	0	0
11	B	24	26	25	1	0
12	D	52	42	0	0	0
13	F	31	14	13	0	0
14	A	33	0	0	0	0
14	B	32	0	0	0	0
14	C	80	0	0	0	0
14	D	13	0	0	1	0
14	E	2	0	0	0	0
14	F	9	0	0	0	0
All	All	17626	16942	16816	43	0

The all-atom clashscore is defined as the number of clashes found per 1000 atoms (including hydrogen atoms). The all-atom clashscore for this structure is 1.

All (43) close contacts within the same asymmetric unit are listed below, sorted by their clash magnitude.

Atom-1	Atom-2	Interatomic distance (Å)	Clash overlap (Å)
1:C:120[B]:ASP:OD1	1:C:124:LYS:NZ	2.30	0.64
1:A:336:LYS:HD2	3:E:24:LEU:HD13	1.81	0.62
4:F:200:ASP:OD2	4:F:241:THR:OG1	2.13	0.61
2:B:298:SER:OG	11:B:504:MES:O2S	2.22	0.58
1:C:9:VAL:HG22	1:C:68[B]:VAL:CG1	2.39	0.53
2:D:385:GLN:HB2	2:D:429:VAL:HG13	1.91	0.52
2:B:83:PHE:O	2:B:86:ILE:HG22	2.10	0.52
1:A:209:ILE:HG23	1:A:230:LEU:HD23	1.92	0.51
2:D:213:CYS:HB3	2:D:219:LEU:HD12	1.93	0.51
1:C:4[B]:CYS:SG	1:C:136:LEU:HG	2.51	0.50

Continued on next page...

Continued from previous page...

Atom-1	Atom-2	Interatomic distance (Å)	Clash overlap (Å)
2:D:438:ALA:O	14:D:601:HOH:O	2.19	0.50
2:B:165:ILE:HG21	2:B:252:LEU:HB3	1.93	0.50
4:F:237:THR:O	4:F:246:GLN:NE2	2.45	0.49
1:A:274:PRO:HB3	1:A:286:LEU:HD12	1.95	0.48
2:D:172:MET:HG3	2:D:387:LEU:HD11	1.96	0.48
1:A:209:ILE:HD11	1:A:302:MET:SD	2.53	0.47
1:A:217:LEU:HD21	1:A:368:LEU:HD23	1.97	0.47
1:C:320:ARG:HA	1:C:356:ASN:O	2.15	0.47
2:B:326:LYS:NZ	2:B:330:GLU:OE2	2.48	0.46
1:A:187:SER:HB3	1:A:391:LEU:HD21	1.99	0.45
2:B:70:LEU:HD12	2:B:99:ALA:HB2	1.98	0.45
1:C:209:ILE:HG23	1:C:230:LEU:HD23	1.99	0.45
2:D:397:ALA:O	2:D:401:ARG:NH1	2.50	0.45
1:C:335:ILE:HG23	1:C:339:ARG:HG3	1.99	0.44
2:D:83:PHE:O	2:D:86:ILE:HG22	2.17	0.44
2:D:136:GLN:HA	2:D:167:ASN:O	2.18	0.44
2:B:291:LEU:HD11	2:B:373:MET:HB3	2.00	0.43
1:A:172:TYR:HB3	1:A:205:ASP:HA	2.00	0.43
4:F:292:ARG:NH1	4:F:379:HIS:O	2.51	0.43
2:B:204:ILE:HD13	2:B:231:VAL:HG13	1.99	0.43
2:D:269:MET:HG3	2:D:303:ALA:HB3	2.01	0.43
1:C:187:SER:HB3	1:C:391:LEU:HD21	2.00	0.43
2:D:101:ASN:HD22	2:D:180:THR:HG21	1.84	0.42
2:B:16:ILE:HD13	2:B:231:VAL:HG11	2.01	0.42
2:B:2:ARG:O	2:B:51:VAL:HA	2.20	0.42
2:D:165:ILE:HG21	2:D:252:LEU:HB3	2.02	0.41
2:B:172:MET:HG3	2:B:387:LEU:HD11	2.01	0.41
1:C:93:ILE:HG22	1:C:114:ILE:HD11	2.02	0.41
2:D:347:ILE:HG22	2:D:350:ASN:HB3	2.03	0.41
1:C:39:ASP:OD2	1:C:61:HIS:NE2	2.50	0.41
1:C:119:LEU:HD11	1:C:156:ARG:HB3	2.02	0.40
1:A:68:VAL:HG11	1:A:149:PHE:CE2	2.56	0.40

There are no symmetry-related clashes.

## 5.3 Torsion angles [i](#)

### 5.3.1 Protein backbone [i](#)

In the following table, the Percentiles column shows the percent Ramachandran outliers of the chain as a percentile score with respect to all X-ray entries followed by that with respect to entries



of similar resolution.

The Analysed column shows the number of residues for which the backbone conformation was analysed, and the total number of residues.

Mol	Chain	Analysed	Favoured	Allowed	Outliers	Percentiles	
1	A	440/451 (98%)	429 (98%)	11 (2%)	0	100	100
1	C	452/451 (100%)	445 (98%)	7 (2%)	0	100	100
2	B	429/445 (96%)	422 (98%)	7 (2%)	0	100	100
2	D	416/445 (94%)	409 (98%)	7 (2%)	0	100	100
3	E	119/189 (63%)	118 (99%)	1 (1%)	0	100	100
4	F	299/384 (78%)	292 (98%)	7 (2%)	0	100	100
All	All	2155/2365 (91%)	2115 (98%)	40 (2%)	0	100	100

There are no Ramachandran outliers to report.

### 5.3.2 Protein sidechains [i](#)

In the following table, the Percentiles column shows the percent sidechain outliers of the chain as a percentile score with respect to all X-ray entries followed by that with respect to entries of similar resolution.

The Analysed column shows the number of residues for which the sidechain conformation was analysed, and the total number of residues.

Mol	Chain	Analysed	Rotameric	Outliers	Percentiles	
1	A	373/379 (98%)	372 (100%)	1 (0%)	92	97
1	C	384/379 (101%)	383 (100%)	1 (0%)	92	97
2	B	375/383 (98%)	374 (100%)	1 (0%)	92	97
2	D	363/383 (95%)	362 (100%)	1 (0%)	92	97
3	E	111/171 (65%)	111 (100%)	0	100	100
4	F	286/342 (84%)	286 (100%)	0	100	100
All	All	1892/2037 (93%)	1888 (100%)	4 (0%)	93	97

All (4) residues with a non-rotameric sidechain are listed below:

Mol	Chain	Res	Type
1	A	221	ARG
2	B	139	HIS
1	C	71	GLU

*Continued on next page...*

*Continued from previous page...*

Mol	Chain	Res	Type
2	D	139	HIS

Sometimes sidechains can be flipped to improve hydrogen bonding and reduce clashes. There are no such sidechains identified.

### 5.3.3 RNA [i](#)

There are no RNA molecules in this entry.

## 5.4 Non-standard residues in protein, DNA, RNA chains [i](#)

There are no non-standard protein/DNA/RNA residues in this entry.

## 5.5 Carbohydrates [i](#)

There are no monosaccharides in this entry.

## 5.6 Ligand geometry [i](#)

Of 20 ligands modelled in this entry, 9 are monoatomic - leaving 11 for Mogul analysis.

In the following table, the Counts columns list the number of bonds (or angles) for which Mogul statistics could be retrieved, the number of bonds (or angles) that are observed in the model and the number of bonds (or angles) that are defined in the Chemical Component Dictionary. The Link column lists molecule types, if any, to which the group is linked. The Z score for a bond length (or angle) is the number of standard deviations the observed value is removed from the expected value. A bond length (or angle) with  $|Z| > 2$  is considered an outlier worth inspection. RMSZ is the root-mean-square of all Z scores of the bond lengths (or angles).

Mol	Type	Chain	Res	Link	Bond lengths			Bond angles		
					Counts	RMSZ	# Z  > 2	Counts	RMSZ	# Z  > 2
9	DMS	C	504	-	3,3,3	0.65	0	3,3,3	0.44	0
10	GDP	D	501	6	24,30,30	0.95	1 (4%)	30,47,47	1.16	4 (13%)
11	MES	B	504	-	12,12,12	2.32	1 (8%)	14,16,16	1.54	2 (14%)
9	DMS	A	505	-	3,3,3	0.67	0	3,3,3	0.46	0
12	M5U	D	503	-	46,54,54	2.38	15 (32%)	44,70,70	2.02	14 (31%)
11	MES	B	503	-	12,12,12	2.18	1 (8%)	14,16,16	1.64	2 (14%)
10	GDP	B	501	6	24,30,30	1.02	1 (4%)	30,47,47	1.05	3 (10%)
5	GTP	A	501	6	26,34,34	1.12	2 (7%)	32,54,54	1.36	5 (15%)

Mol	Type	Chain	Res	Link	Bond lengths			Bond angles		
					Counts	RMSZ	# Z  > 2	Counts	RMSZ	# Z  > 2
5	GTP	C	501	6	26,34,34	1.09	1 (3%)	32,54,54	1.39	5 (15%)
7	GOL	A	503	-	5,5,5	0.87	0	5,5,5	1.03	0
13	ACP	F	401	6	27,33,33	4.49	11 (40%)	32,52,52	1.81	5 (15%)

In the following table, the Chirals column lists the number of chiral outliers, the number of chiral centers analysed, the number of these observed in the model and the number defined in the Chemical Component Dictionary. Similar counts are reported in the Torsion and Rings columns. '-' means no outliers of that kind were identified.

Mol	Type	Chain	Res	Link	Chirals	Torsions	Rings
10	GDP	D	501	6	-	5/12/32/32	0/3/3/3
11	MES	B	504	-	-	3/6/14/14	0/1/1/1
12	M5U	D	503	-	-	16/66/70/70	0/2/3/3
11	MES	B	503	-	-	1/6/14/14	0/1/1/1
10	GDP	B	501	6	-	4/12/32/32	0/3/3/3
5	GTP	A	501	6	-	7/18/38/38	0/3/3/3
5	GTP	C	501	6	-	9/18/38/38	0/3/3/3
7	GOL	A	503	-	-	0/4/4/4	-
13	ACP	F	401	6	-	7/15/38/38	0/3/3/3

All (33) bond length outliers are listed below:

Mol	Chain	Res	Type	Atoms	Z	Observed(Å)	Ideal(Å)
13	F	401	ACP	O4'-C1'	15.47	1.62	1.41
13	F	401	ACP	C2'-C1'	-12.90	1.34	1.53
11	B	504	MES	C8-S	-7.77	1.66	1.77
11	B	503	MES	C8-S	-7.33	1.67	1.77
12	D	503	M5U	O42-C40	5.81	1.46	1.34
13	F	401	ACP	O4'-C4'	-5.75	1.32	1.45
12	D	503	M5U	O26-C24	4.71	1.44	1.34
12	D	503	M5U	C31-C30	4.60	1.57	1.44
13	F	401	ACP	C6-N6	4.40	1.50	1.34
13	F	401	ACP	PB-O2B	-4.16	1.46	1.56
12	D	503	M5U	C14-C15	4.14	1.56	1.44
12	D	503	M5U	C33-C32	4.03	1.55	1.44
5	A	501	GTP	C5-C6	-3.96	1.39	1.47
12	D	503	M5U	C44-C46	3.83	1.56	1.50
5	C	501	GTP	C5-C6	-3.82	1.39	1.47
12	D	503	M5U	O51-C49	3.77	1.42	1.33
12	D	503	M5U	C16-C17	3.74	1.55	1.44

*Continued on next page...*

*Continued from previous page...*

Mol	Chain	Res	Type	Atoms	Z	Observed(Å)	Ideal(Å)
13	F	401	ACP	PB-O3A	3.71	1.62	1.58
13	F	401	ACP	O3'-C3'	-3.53	1.34	1.43
12	D	503	M5U	O42-C11	-3.47	1.40	1.46
13	F	401	ACP	C2-N3	3.31	1.37	1.32
12	D	503	M5U	O02-C03	3.21	1.41	1.33
12	D	503	M5U	O26-C27	-3.19	1.40	1.46
13	F	401	ACP	PA-O5'	3.03	1.71	1.59
12	D	503	M5U	O45-C44	-3.01	1.37	1.43
10	B	501	GDP	C6-N1	-2.97	1.33	1.37
10	D	501	GDP	C6-N1	-2.60	1.34	1.37
12	D	503	M5U	C21-C24	2.50	1.55	1.50
13	F	401	ACP	PG-O2G	-2.24	1.49	1.54
12	D	503	M5U	C05-C03	2.15	1.54	1.51
13	F	401	ACP	C5-C4	-2.14	1.35	1.40
12	D	503	M5U	C37-N36	-2.12	1.31	1.37
5	A	501	GTP	C2-N3	2.01	1.38	1.33

All (40) bond angle outliers are listed below:

Mol	Chain	Res	Type	Atoms	Z	Observed(°)	Ideal(°)
12	D	503	M5U	O02-C03-C05	6.20	120.07	111.03
12	D	503	M5U	O51-C49-C43	6.08	119.89	111.03
13	F	401	ACP	C5-C6-N6	5.60	128.86	120.35
13	F	401	ACP	N3-C2-N1	-5.47	120.14	128.68
13	F	401	ACP	N6-C6-N1	-3.55	111.20	118.57
11	B	503	MES	O3S-S-C8	3.47	111.38	105.77
11	B	503	MES	C5-N4-C3	3.42	116.52	108.83
13	F	401	ACP	C3'-C2'-C1'	3.29	105.94	100.98
5	C	501	GTP	PA-O3A-PB	-3.26	121.64	132.83
10	D	501	GDP	PA-O3A-PB	-3.24	121.70	132.83
5	C	501	GTP	C8-N7-C5	3.09	108.88	102.99
5	A	501	GTP	C5-C6-N1	3.05	119.34	113.95
5	C	501	GTP	C5-C6-N1	2.98	119.21	113.95
5	A	501	GTP	C8-N7-C5	2.98	108.66	102.99
5	A	501	GTP	PA-O3A-PB	-2.97	122.64	132.83
5	C	501	GTP	PB-O3B-PG	-2.94	122.75	132.83
12	D	503	M5U	C44-C46-C47	-2.90	118.92	124.86
12	D	503	M5U	C12-C11-C05	-2.84	109.01	115.71
10	B	501	GDP	PA-O3A-PB	-2.83	123.10	132.83
11	B	504	MES	O2S-S-C8	2.83	110.32	106.92
11	B	504	MES	C6-C5-N4	-2.81	105.85	110.10
5	A	501	GTP	PB-O3B-PG	-2.78	123.27	132.83

*Continued on next page...*

*Continued from previous page...*

Mol	Chain	Res	Type	Atoms	Z	Observed(°)	Ideal(°)
5	A	501	GTP	C2-N1-C6	-2.76	120.02	125.10
12	D	503	M5U	C33-C32-C31	-2.70	118.81	124.81
5	C	501	GTP	C2-N1-C6	-2.55	120.41	125.10
12	D	503	M5U	O50-C49-C43	-2.54	120.26	124.99
13	F	401	ACP	PB-O3A-PA	-2.54	124.52	132.56
12	D	503	M5U	C17-C16-C15	-2.44	119.37	124.81
10	D	501	GDP	C8-N7-C5	2.44	107.64	102.99
12	D	503	M5U	C19-C18-C17	-2.43	118.50	123.69
10	B	501	GDP	C8-N7-C5	2.41	107.59	102.99
12	D	503	M5U	O02-C03-O04	-2.33	119.28	123.84
12	D	503	M5U	O04-C03-C05	-2.33	120.65	124.99
12	D	503	M5U	C32-C33-C34	-2.30	118.95	124.09
12	D	503	M5U	C06-C08-C09	-2.28	120.19	124.86
10	D	501	GDP	C3'-C2'-C1'	2.11	104.15	100.98
10	D	501	GDP	C5-C6-N1	2.11	117.67	113.95
12	D	503	M5U	O51-C49-O50	-2.04	119.85	123.84
10	B	501	GDP	C5-C6-N1	2.03	117.53	113.95
12	D	503	M5U	C14-C15-C16	-2.03	120.30	124.81

There are no chirality outliers.

All (52) torsion outliers are listed below:

Mol	Chain	Res	Type	Atoms
5	A	501	GTP	C5'-O5'-PA-O1A
5	A	501	GTP	C5'-O5'-PA-O2A
5	C	501	GTP	C5'-O5'-PA-O1A
5	C	501	GTP	C5'-O5'-PA-O2A
10	B	501	GDP	C5'-O5'-PA-O1A
10	B	501	GDP	C5'-O5'-PA-O2A
10	D	501	GDP	C5'-O5'-PA-O1A
10	D	501	GDP	C5'-O5'-PA-O2A
11	B	503	MES	C8-C7-N4-C5
11	B	504	MES	C7-C8-S-O1S
11	B	504	MES	C7-C8-S-O2S
12	D	503	M5U	C05-C03-O02-C01
12	D	503	M5U	C03-C05-C06-C08
12	D	503	M5U	C03-C05-C06-O07
12	D	503	M5U	C11-C05-C06-C08
12	D	503	M5U	C11-C05-C06-O07
12	D	503	M5U	O42-C11-C12-C13
13	F	401	ACP	PG-C3B-PB-O1B
13	F	401	ACP	PG-C3B-PB-O2B

*Continued on next page...*

Continued from previous page...

Mol	Chain	Res	Type	Atoms
13	F	401	ACP	PG-C3B-PB-O3A
13	F	401	ACP	C5'-O5'-PA-O3A
12	D	503	M5U	O04-C03-O02-C01
12	D	503	M5U	O50-C49-O51-C52
12	D	503	M5U	C43-C49-O51-C52
12	D	503	M5U	C31-C32-C33-C34
12	D	503	M5U	C13-C14-C15-C16
11	B	504	MES	C7-C8-S-O3S
5	C	501	GTP	PB-O3B-PG-O1G
13	F	401	ACP	C5'-O5'-PA-O2A
5	C	501	GTP	PB-O3A-PA-O2A
10	D	501	GDP	PB-O3A-PA-O2A
13	F	401	ACP	PB-O3A-PA-O2A
10	D	501	GDP	PB-O3A-PA-O1A
5	C	501	GTP	C4'-C5'-O5'-PA
5	A	501	GTP	PB-O3B-PG-O2G
5	C	501	GTP	PB-O3B-PG-O2G
5	C	501	GTP	PB-O3B-PG-O3G
13	F	401	ACP	PB-O3A-PA-O1A
5	A	501	GTP	C5'-O5'-PA-O3A
5	C	501	GTP	C5'-O5'-PA-O3A
10	B	501	GDP	C5'-O5'-PA-O3A
10	D	501	GDP	C5'-O5'-PA-O3A
5	A	501	GTP	C4'-C5'-O5'-PA
5	A	501	GTP	PB-O3A-PA-O1A
5	A	501	GTP	PB-O3A-PA-O2A
5	C	501	GTP	PB-O3A-PA-O1A
10	B	501	GDP	PB-O3A-PA-O2A
12	D	503	M5U	O26-C27-C28-C29
12	D	503	M5U	C05-C11-C12-C13
12	D	503	M5U	C28-C27-C43-C49
12	D	503	M5U	C03-C05-C11-O42
12	D	503	M5U	O26-C27-C43-C49

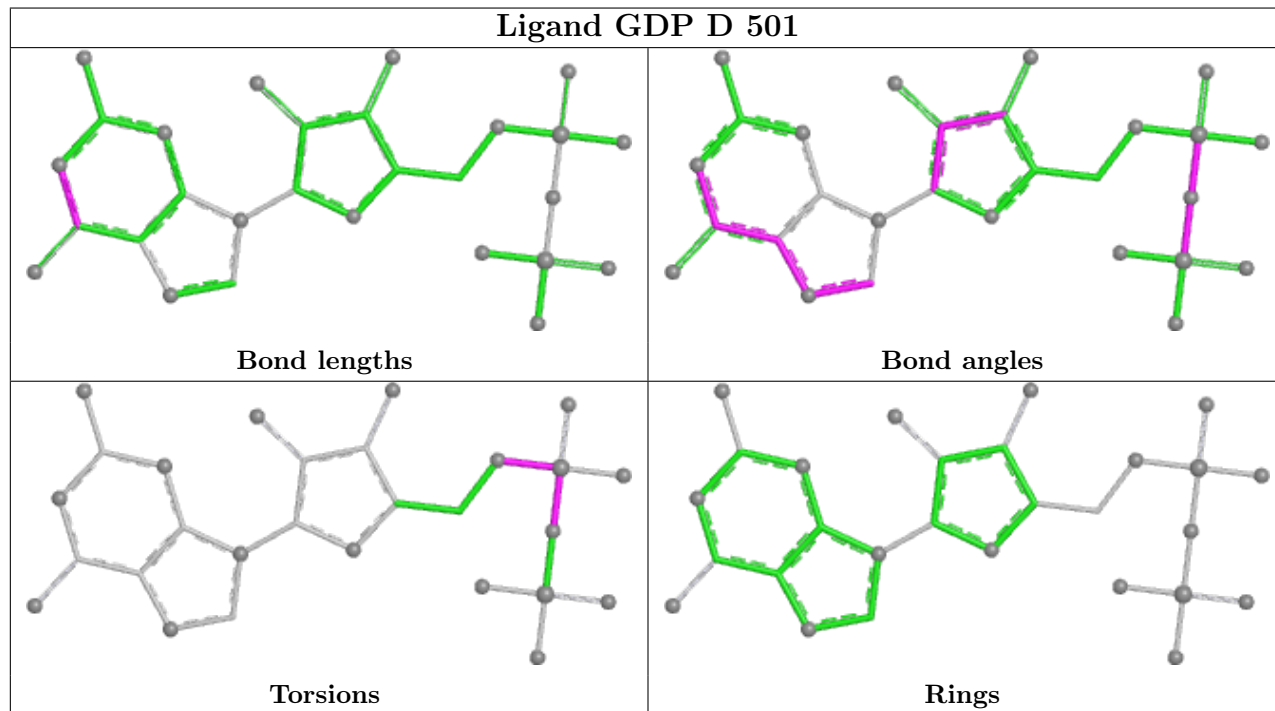
There are no ring outliers.

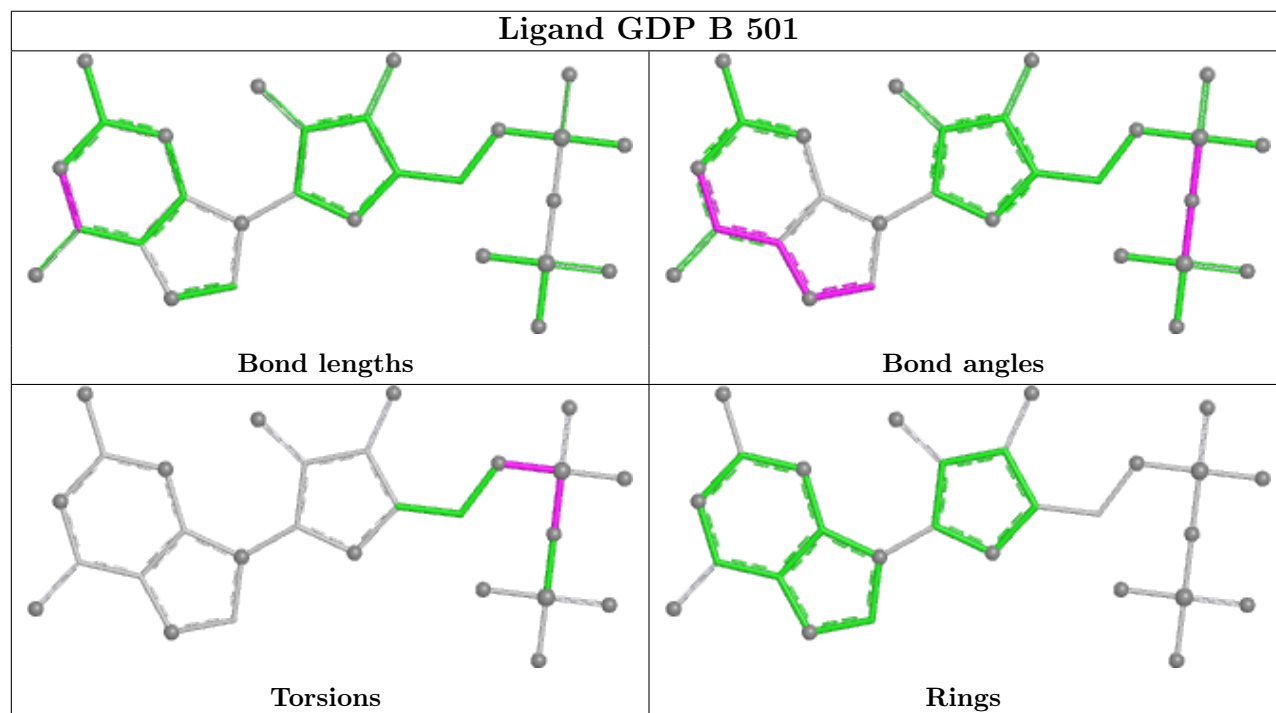
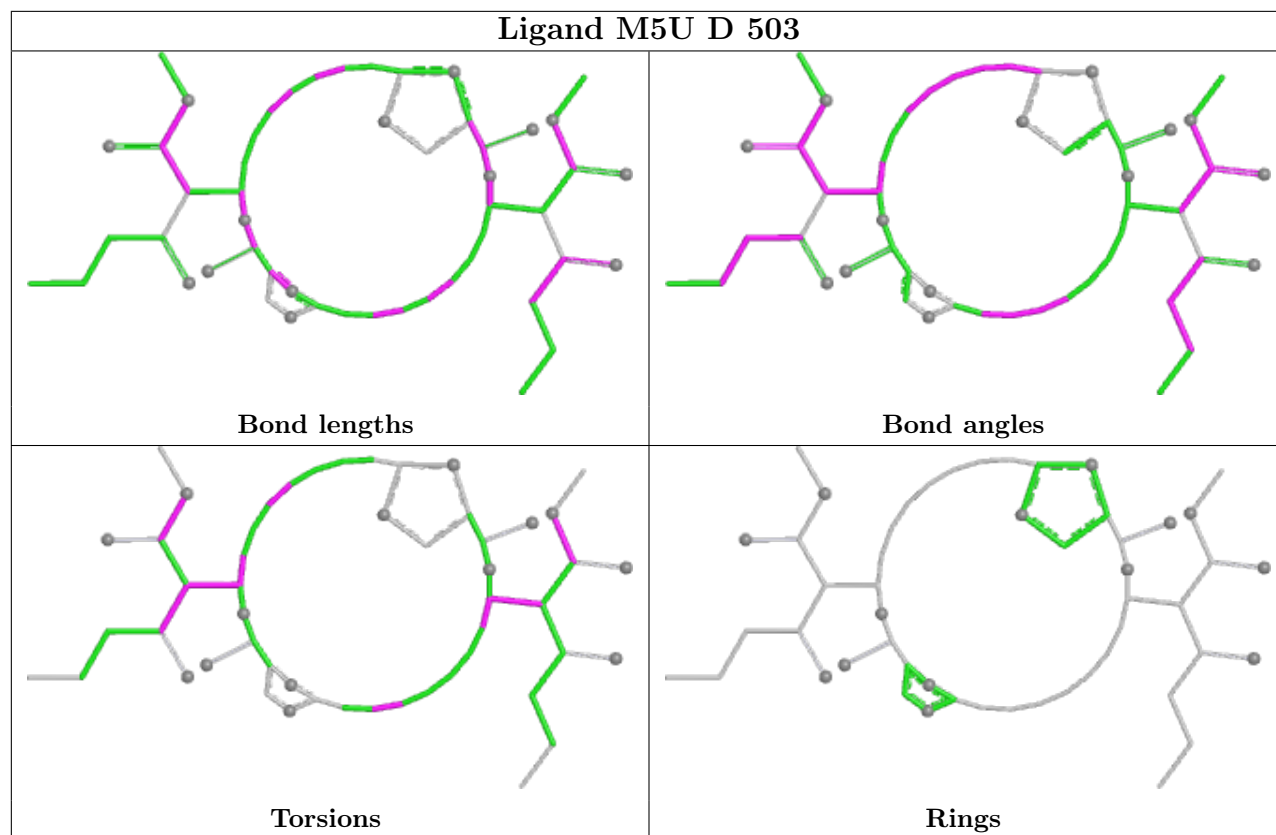
1 monomer is involved in 1 short contact:

Mol	Chain	Res	Type	Clashes	Symm-Clashes
11	B	504	MES	1	0

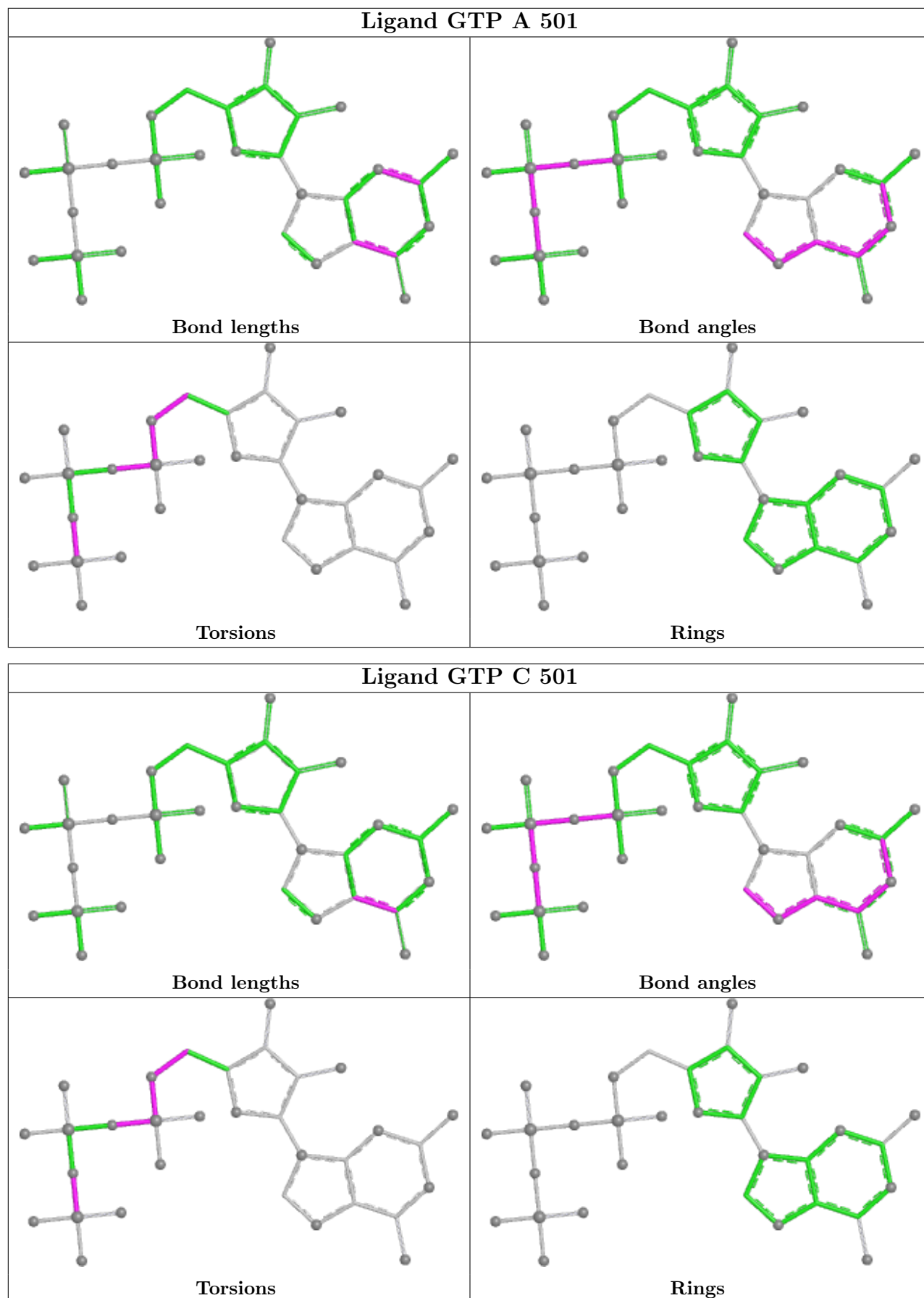
The following is a two-dimensional graphical depiction of Mogul quality analysis of bond lengths, bond angles, torsion angles, and ring geometry for all instances of the Ligand of Interest. In

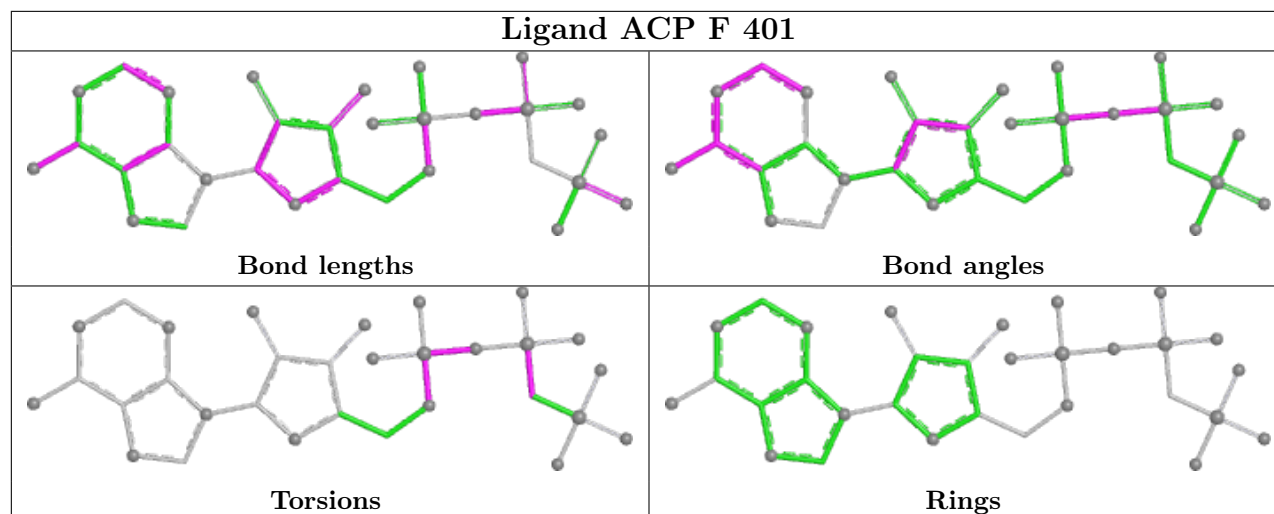
addition, ligands with molecular weight > 250 and outliers as shown on the validation Tables will also be included. For torsion angles, if less than 5% of the Mogul distribution of torsion angles is within 10 degrees of the torsion angle in question, then that torsion angle is considered an outlier. Any bond that is central to one or more torsion angles identified as an outlier by Mogul will be highlighted in the graph. For rings, the root-mean-square deviation (RMSD) between the ring in question and similar rings identified by Mogul is calculated over all ring torsion angles. If the average RMSD is greater than 60 degrees and the minimal RMSD between the ring in question and any Mogul-identified rings is also greater than 60 degrees, then that ring is considered an outlier. The outliers are highlighted in purple. The color gray indicates Mogul did not find sufficient equivalents in the CSD to analyse the geometry.











## 5.7 Other polymers [i](#)

There are no such residues in this entry.

## 5.8 Polymer linkage issues [i](#)

There are no chain breaks in this entry.

## 6 Fit of model and data [i](#)

### 6.1 Protein, DNA and RNA chains [i](#)

In the following table, the column labelled ‘#RSRZ > 2’ contains the number (and percentage) of RSRZ outliers, followed by percent RSRZ outliers for the chain as percentile scores relative to all X-ray entries and entries of similar resolution. The OWAB column contains the minimum, median, 95<sup>th</sup> percentile and maximum values of the occupancy-weighted average B-factor per residue. The column labelled ‘Q < 0.9’ lists the number of (and percentage) of residues with an average occupancy less than 0.9.

Mol	Chain	Analysed	<RSRZ>	#RSRZ>2	OWAB(Å <sup>2</sup> )	Q<0.9
1	A	437/451 (96%)	0.71	44 (10%) 7 6	39, 60, 92, 141	0
1	C	440/451 (97%)	0.16	6 (1%) 75 73	32, 48, 78, 118	0
2	B	425/445 (95%)	0.47	23 (5%) 25 23	32, 55, 92, 164	1 (0%)
2	D	420/445 (94%)	0.92	66 (15%) 2 1	41, 71, 104, 135	3 (0%)
3	E	121/189 (64%)	0.58	13 (10%) 6 5	42, 73, 109, 128	0
4	F	315/384 (82%)	1.49	99 (31%) 0 0	48, 79, 129, 154	0
All	All	2158/2365 (91%)	0.70	251 (11%) 4 4	32, 62, 105, 164	4 (0%)

All (251) RSRZ outliers are listed below:

Mol	Chain	Res	Type	RSRZ
4	F	244	CYS	9.7
4	F	161	LEU	8.9
4	F	182	ILE	7.9
4	F	225	SER	7.4
2	D	405	LEU	7.2
4	F	245	ILE	7.0
4	F	253	TYR	6.9
2	B	59	ASN	6.7
2	D	37	HIS	6.7
4	F	169	LEU	6.4
4	F	240	LEU	6.3
2	B	56	ALA	6.2
4	F	242	ASN	6.1
4	F	148	ILE	6.1
2	D	57	THR	6.0
2	D	415	GLU	5.8
3	E	27	PRO	5.8
3	E	48	GLU	5.7
2	D	409	THR	5.7

*Continued on next page...*

*Continued from previous page...*

<b>Mol</b>	<b>Chain</b>	<b>Res</b>	<b>Type</b>	<b>RSRZ</b>
4	F	133	ALA	5.6
4	F	134	ALA	5.5
4	F	100	ILE	5.5
4	F	252	ASN	5.4
1	A	1	MET	5.4
4	F	131	PHE	5.4
2	D	418	PHE	5.3
4	F	130	VAL	5.3
2	B	57	THR	5.3
3	E	139	LEU	5.3
4	F	101	TYR	5.2
3	E	133	VAL	5.1
2	D	401	ARG	5.1
1	A	46	ASP	5.0
4	F	162	ILE	5.0
4	F	135	TYR	5.0
2	D	406	HIS	5.0
4	F	132	LEU	5.0
2	D	400	ARG	4.8
4	F	248	GLU	4.8
4	F	246	GLN	4.8
2	D	399	PHE	4.7
4	F	224	SER	4.7
4	F	164	SER	4.7
4	F	98	TYR	4.7
4	F	247	LYS	4.7
4	F	168	GLU	4.6
1	A	86	LEU	4.6
4	F	181	VAL	4.6
2	D	407	TRP	4.5
4	F	129	GLU	4.5
4	F	165	GLU	4.5
2	D	402	LYS	4.4
4	F	256	TYR	4.4
4	F	243	HIS	4.4
4	F	31	ARG	4.3
2	B	60	LYS	4.3
4	F	163	SER	4.3
1	A	42	ILE	4.3
2	D	38	GLY	4.3
2	D	416	MET	4.3
4	F	223	THR	4.2

*Continued on next page...*

*Continued from previous page...*

<b>Mol</b>	<b>Chain</b>	<b>Res</b>	<b>Type</b>	<b>RSRZ</b>
4	F	166	ALA	4.2
4	F	255	ARG	4.1
4	F	180	HIS	4.1
4	F	99	VAL	4.1
4	F	239	HIS	4.0
2	B	36	TYR	4.0
2	B	277	SER	4.0
4	F	151	SER	4.0
1	A	51[A]	THR	3.9
1	A	41	THR	3.9
1	A	45	GLY	3.9
4	F	102	PRO	3.9
4	F	149	ALA	3.9
4	F	160	ILE	3.9
3	E	140	LYS	3.9
4	F	147	TRP	3.9
2	B	439	THR	3.8
4	F	227	PRO	3.8
3	E	45	PRO	3.8
2	B	61	TYR	3.8
4	F	226	GLU	3.8
4	F	222	ARG	3.7
2	D	408	TYR	3.7
1	A	54	SER	3.7
2	D	33	THR	3.7
4	F	238	CYS	3.7
4	F	146	VAL	3.7
4	F	128	ARG	3.6
2	B	37	HIS	3.6
2	D	56	ALA	3.6
4	F	145	ASN	3.6
4	F	229	ASN	3.6
4	F	170	LEU	3.5
2	B	38	GLY	3.5
2	D	85	GLN	3.5
2	D	403	ALA	3.5
4	F	194	PRO	3.5
4	F	259	GLY	3.5
4	F	186	LEU	3.4
2	B	438	ALA	3.4
1	A	56	THR	3.4
1	A	172	TYR	3.3

*Continued on next page...*

*Continued from previous page...*

<b>Mol</b>	<b>Chain</b>	<b>Res</b>	<b>Type</b>	<b>RSRZ</b>
4	F	241	THR	3.3
4	F	13	VAL	3.3
4	F	254	GLY	3.3
2	D	59	ASN	3.3
4	F	6	VAL	3.3
4	F	179	VAL	3.3
4	F	197	ARG	3.3
4	F	260	ASN	3.2
4	F	20	LEU	3.2
2	D	404	PHE	3.2
3	E	46	SER	3.2
1	A	128	GLN	3.2
2	B	276	THR	3.2
1	A	49	PHE	3.2
2	D	219	LEU	3.2
1	A	48	SER	3.2
1	A	125	LEU	3.2
2	D	202	TYR	3.1
4	F	228	TYR	3.1
1	A	262	TYR	3.1
4	F	192	LEU	3.1
1	A	62	VAL	3.1
2	D	60	LYS	3.1
4	F	17	VAL	3.1
2	D	398	MET	3.0
1	A	38	SER	3.0
4	F	21	LEU	3.0
3	E	26	PRO	3.0
4	F	258	GLU	3.0
2	B	58	GLY	3.0
4	F	340	GLN	3.0
2	D	414	ASP	2.9
2	D	201	THR	2.9
4	F	136	ASN	2.9
2	D	268	PHE	2.9
1	A	147	SER	2.8
1	A	171	ILE	2.8
4	F	126	ASP	2.8
1	A	170	SER	2.8
4	F	127	GLU	2.8
1	A	53	PHE	2.8
2	D	413	MET	2.8

*Continued on next page...*

*Continued from previous page...*

<b>Mol</b>	<b>Chain</b>	<b>Res</b>	<b>Type</b>	<b>RSRZ</b>
4	F	183	GLN	2.7
4	F	257	GLU	2.7
2	D	78	VAL	2.7
2	D	181	VAL	2.7
3	E	135	LYS	2.7
4	F	320	MET	2.7
2	D	271	GLY	2.7
1	A	282	TYR	2.7
2	D	39	ASP	2.7
3	E	28	SER	2.7
2	D	86	ILE	2.7
1	A	140	SER	2.7
1	A	146	GLY	2.7
1	C	340	SER	2.6
2	B	83	PHE	2.6
2	D	83	PHE	2.6
1	A	150	THR	2.6
2	D	397	ALA	2.6
4	F	150	LYS	2.6
2	D	269	MET	2.6
2	B	34	GLY	2.6
4	F	263	PHE	2.6
2	D	182	VAL	2.6
2	D	34	GLY	2.6
4	F	200	ASP	2.6
2	B	35	SER	2.5
2	D	410	GLY	2.5
2	D	167	ASN	2.5
4	F	330	ILE	2.5
2	B	39	ASP	2.5
4	F	191	LEU	2.5
2	D	203	CYS	2.5
2	D	170	SER	2.5
1	A	201	ALA	2.5
1	C	58	ALA	2.5
4	F	335	ALA	2.5
4	F	337	ALA	2.5
2	D	58	GLY	2.5
4	F	199	PHE	2.4
1	A	61	HIS	2.4
1	A	9	VAL	2.4
4	F	14	TYR	2.4

*Continued on next page...*

*Continued from previous page...*

<b>Mol</b>	<b>Chain</b>	<b>Res</b>	<b>Type</b>	<b>RSRZ</b>
2	B	33	THR	2.4
2	D	168	THR	2.4
1	A	100	ALA	2.4
2	B	62	VAL	2.4
1	A	142	GLY	2.4
3	E	132	GLU	2.4
2	D	36	TYR	2.4
1	A	47	ASP	2.4
4	F	230	SER	2.4
4	F	221	LEU	2.4
1	A	173	PRO	2.3
1	C	85	GLN	2.3
1	C	83	TYR	2.3
2	D	379	GLY	2.3
1	C	84	ARG	2.3
2	B	85	GLN	2.3
3	E	137	LYS	2.3
1	C	1	MET	2.3
2	B	86	ILE	2.3
1	A	389	ALA	2.3
2	D	256	ALA	2.3
4	F	196	HIS	2.3
4	F	10	ASN	2.3
2	D	238	VAL	2.3
3	E	25	LYS	2.3
2	D	267	PHE	2.3
2	D	220	THR	2.3
2	D	200	GLU	2.2
4	F	25	GLY	2.2
1	A	178	SER	2.2
1	A	31	GLN	2.2
2	D	259	MET	2.2
4	F	261	GLU	2.2
1	A	143	GLY	2.2
2	D	381	SER	2.2
4	F	198	LYS	2.2
2	D	380	ASN	2.2
4	F	336	PRO	2.2
4	F	167	SER	2.2
1	A	345	ASP	2.2
2	D	221	THR	2.2
1	A	141	PHE	2.2

*Continued on next page...*



*Continued from previous page...*

Mol	Chain	Res	Type	RSRZ
4	F	361	LEU	2.1
2	D	99	ALA	2.1
4	F	5	VAL	2.1
1	A	60	LYS	2.1
2	B	40	SER	2.1
2	D	378	ILE	2.1
2	D	358	ILE	2.1
4	F	73	ARG	2.1
1	A	57	GLY	2.1
1	A	37	PRO	2.1
2	D	314	THR	2.1
2	D	30	ILE	2.1
4	F	22	LEU	2.1
1	A	55	GLU	2.1
1	A	68	VAL	2.0
1	A	91	GLN	2.0
2	D	169	PHE	2.0
2	D	218	LYS	2.0
2	D	76	ASP	2.0
2	D	82	PRO	2.0
2	D	270	PRO	2.0
2	B	101	ASN	2.0

## 6.2 Non-standard residues in protein, DNA, RNA chains [\(i\)](#)

There are no non-standard protein/DNA/RNA residues in this entry.

## 6.3 Carbohydrates [\(i\)](#)

There are no monosaccharides in this entry.

## 6.4 Ligands [\(i\)](#)

In the following table, the Atoms column lists the number of modelled atoms in the group and the number defined in the chemical component dictionary. The B-factors column lists the minimum, median, 95<sup>th</sup> percentile and maximum values of B factors of atoms in the group. The column labelled 'Q< 0.9' lists the number of atoms with occupancy less than 0.9.

Mol	Type	Chain	Res	Atoms	RSCC	RSR	B-factors(Å <sup>2</sup> )	Q<0.9
8	CA	B	506	1/1	0.33	0.12	87,87,87,87	0

*Continued on next page...*

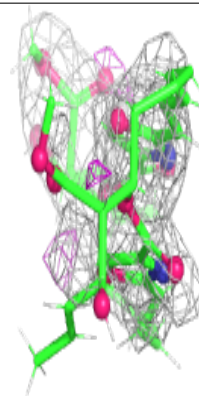
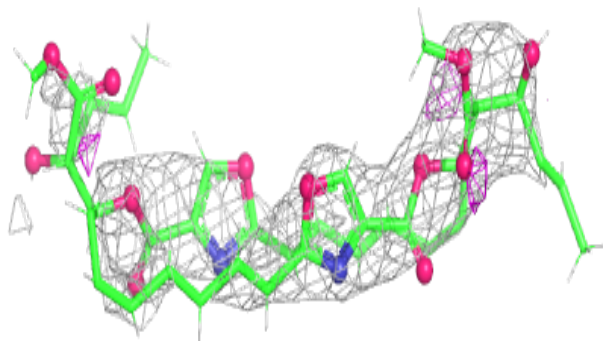
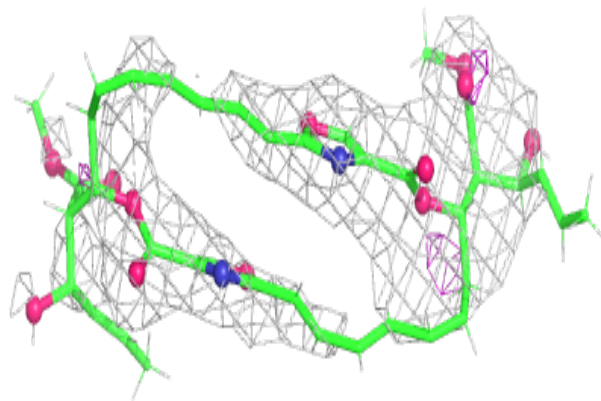
*Continued from previous page...*

Mol	Type	Chain	Res	Atoms	RSCC	RSR	B-factors( $\text{\AA}^2$ )	Q<0.9
12	M5U	D	503	52/52	0.79	0.53	80,96,132,142	0
9	DMS	A	505	4/4	0.81	0.14	67,72,84,116	0
8	CA	B	505	1/1	0.81	0.07	102,102,102,102	0
6	MG	D	502	1/1	0.85	0.06	59,59,59,59	0
6	MG	F	402	1/1	0.85	0.12	80,80,80,80	0
8	CA	A	504	1/1	0.87	0.09	72,72,72,72	0
13	ACP	F	401	31/31	0.88	0.22	77,89,110,127	0
6	MG	B	502	1/1	0.89	0.20	44,44,44,44	0
6	MG	C	502	1/1	0.90	0.16	33,33,33,33	0
9	DMS	C	504	4/4	0.91	0.15	48,67,69,78	0
7	GOL	A	503	6/6	0.92	0.15	60,67,86,86	0
11	MES	B	504	12/12	0.93	0.41	67,77,85,93	25
10	GDP	D	501	28/28	0.95	0.16	50,61,80,88	0
11	MES	B	503	12/12	0.96	0.18	45,55,66,73	0
6	MG	A	502	1/1	0.97	0.25	40,40,40,40	0
5	GTP	A	501	32/32	0.97	0.29	33,43,50,56	0
10	GDP	B	501	28/28	0.97	0.23	30,39,49,58	0
5	GTP	C	501	32/32	0.97	0.20	30,36,43,46	0
8	CA	C	503	1/1	0.98	0.05	61,61,61,61	0

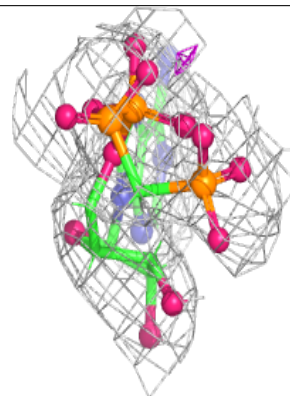
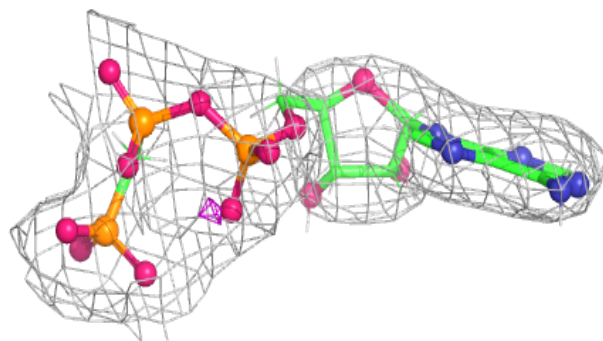
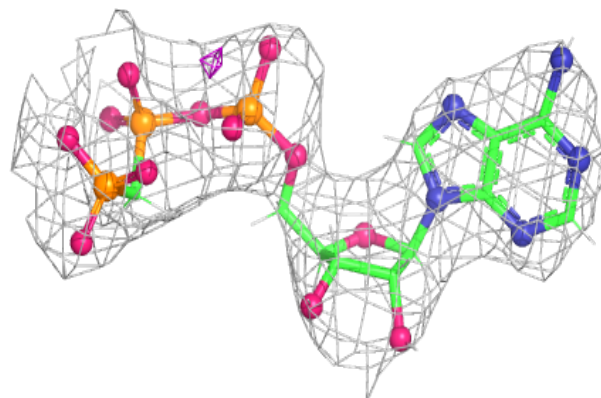
The following is a graphical depiction of the model fit to experimental electron density of all instances of the Ligand of Interest. In addition, ligands with molecular weight > 250 and outliers as shown on the geometry validation Tables will also be included. Each fit is shown from different orientation to approximate a three-dimensional view.

**Electron density around M5U D 503:**

$2mF_o-DF_c$  (at 0.7 rmsd) in gray  
 $mF_o-DF_c$  (at 3 rmsd) in purple (negative)  
and green (positive)

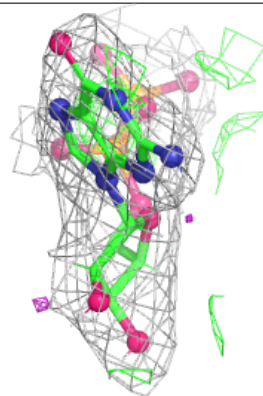
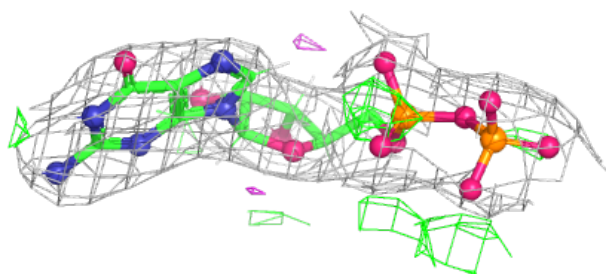
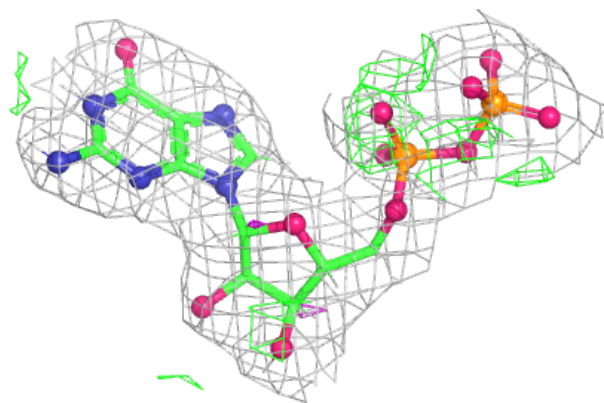
**Electron density around ACP F 401:**

$2mF_o-DF_c$  (at 0.7 rmsd) in gray  
 $mF_o-DF_c$  (at 3 rmsd) in purple (negative)  
and green (positive)

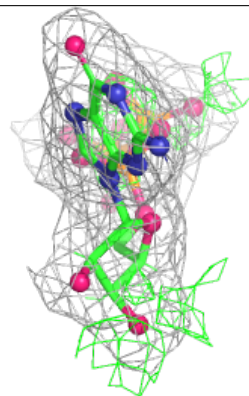
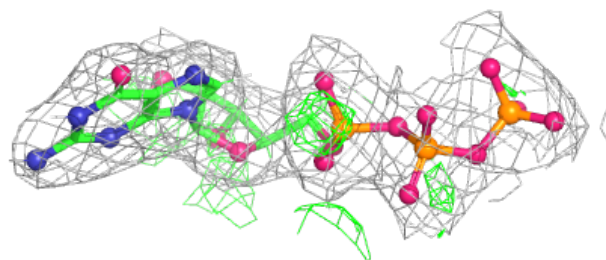
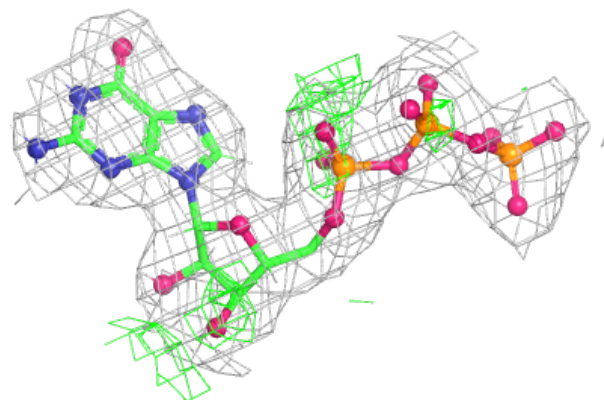


**Electron density around GDP D 501:**

$2mF_o-DF_c$  (at 0.7 rmsd) in gray  
 $mF_o-DF_c$  (at 3 rmsd) in purple (negative)  
and green (positive)

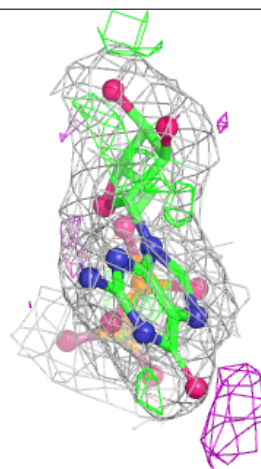
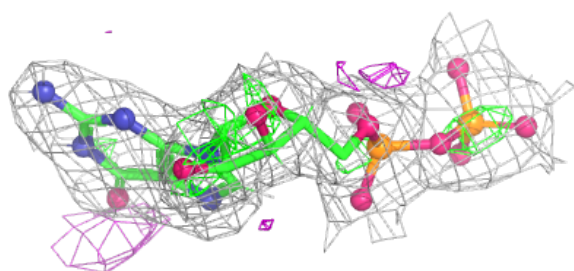
**Electron density around GTP A 501:**

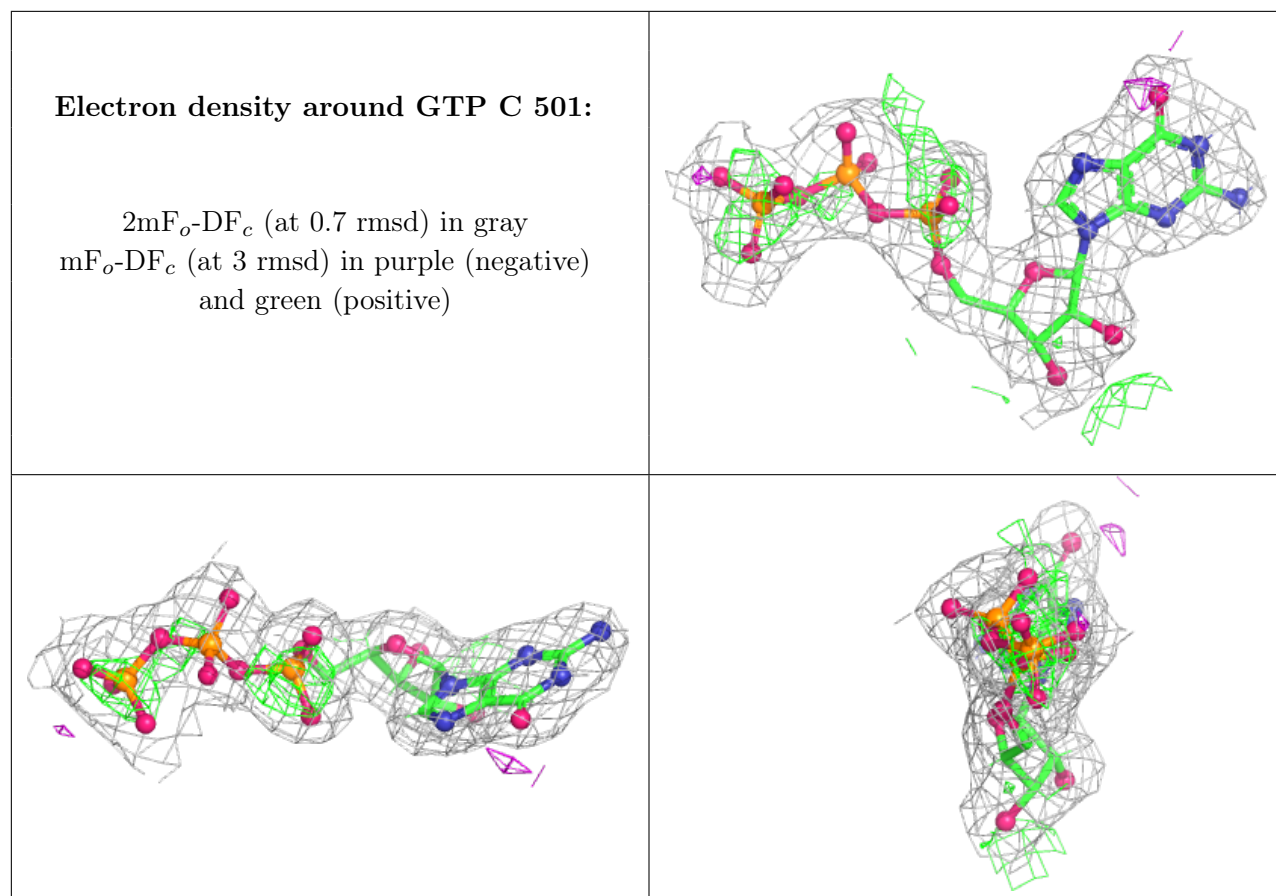
$2mF_o-DF_c$  (at 0.7 rmsd) in gray  
 $mF_o-DF_c$  (at 3 rmsd) in purple (negative)  
and green (positive)



**Electron density around GDP B 501:**

$2mF_o-DF_c$  (at 0.7 rmsd) in gray  
 $mF_o-DF_c$  (at 3 rmsd) in purple (negative)  
and green (positive)





## 6.5 Other polymers [i](#)

There are no such residues in this entry.