



# Full wwPDB X-ray Structure Validation Report ⓘ

Jan 27, 2024 – 11:38 AM EST

PDB ID : 1AIG  
Title : PHOTOSYNTHETIC REACTION CENTER FROM RHODOBACTER SPHAEROIDES IN THE D+QB-CHARGE SEPARATED STATE  
Authors : Stowell, M.H.B.; Mcphillips, T.M.; Soltis, S.M.; Rees, D.C.; Abresch, E.; Fehrer, G.  
Deposited on : 1997-04-17  
Resolution : 2.60 Å(reported)

This is a Full wwPDB X-ray Structure Validation Report for a publicly released PDB entry.

We welcome your comments at [validation@mail.wwpdb.org](mailto:validation@mail.wwpdb.org)

A user guide is available at

<https://www.wwpdb.org/validation/2017/XrayValidationReportHelp>

with specific help available everywhere you see the ⓘ symbol.

The types of validation reports are described at

<http://www.wwpdb.org/validation/2017/FAQs#types>.

---

The following versions of software and data (see [references ⓘ](#)) were used in the production of this report:

MolProbity : 4.02b-467  
Mogul : 1.8.5 (274361), CSD as541be (2020)  
Xtriage (Phenix) : **NOT EXECUTED**  
EDS : **NOT EXECUTED**  
buster-report : 1.1.7 (2018)  
Percentile statistics : 20191225.v01 (using entries in the PDB archive December 25th 2019)  
Ideal geometry (proteins) : Engh & Huber (2001)  
Ideal geometry (DNA, RNA) : Parkinson et al. (1996)  
Validation Pipeline (wwPDB-VP) : 2.36

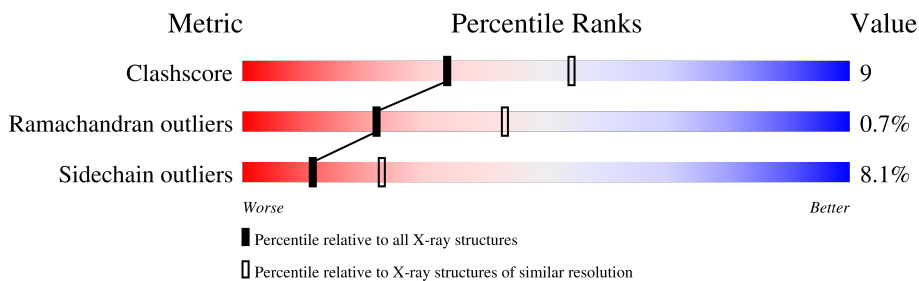
# 1 Overall quality at a glance

The following experimental techniques were used to determine the structure:

*X-RAY DIFFRACTION*

The reported resolution of this entry is 2.60 Å.

Percentile scores (ranging between 0-100) for global validation metrics of the entry are shown in the following graphic. The table shows the number of entries on which the scores are based.



Metric	Whole archive (#Entries)	Similar resolution (#Entries, resolution range(Å))
Clashscore	141614	3518 (2.60-2.60)
Ramachandran outliers	138981	3455 (2.60-2.60)
Sidechain outliers	138945	3455 (2.60-2.60)

The table below summarises the geometric issues observed across the polymeric chains and their fit to the electron density. The red, orange, yellow and green segments of the lower bar indicate the fraction of residues that contain outliers for  $\geq 3$ , 2, 1 and 0 types of geometric quality criteria respectively. A grey segment represents the fraction of residues that are not modelled. The numeric value for each fraction is indicated below the corresponding segment, with a dot representing fractions  $\leq 5\%$

Note EDS was not executed.

Mol	Chain	Length	Quality of chain
1	L	281	
1	N	281	
2	M	307	
2	O	307	
3	H	260	
3	P	260	

The following table lists non-polymeric compounds, carbohydrate monomers and non-standard residues in protein, DNA, RNA chains that are outliers for geometric or electron-density-fit crite-

ria:

Mol	Type	Chain	Res	Chirality	Geometry	Clashes	Electron density
4	BCL	M	309	X	-	-	-
4	BCL	M	310	X	-	-	-
4	BCL	N	282	X	-	-	-
4	BCL	O	309	X	-	-	-
5	BPH	L	284	X	-	-	-
5	BPH	L	285	X	-	-	-
5	BPH	N	285	X	-	-	-
5	BPH	O	310	X	-	-	-

## 2 Entry composition [i](#)

There are 8 unique types of molecules in this entry. The entry contains 14138 atoms, of which 0 are hydrogens and 0 are deuteriums.

In the tables below, the ZeroOcc column contains the number of atoms modelled with zero occupancy, the AltConf column contains the number of residues with at least one atom in alternate conformation and the Trace column contains the number of residues modelled with at most 2 atoms.

- Molecule 1 is a protein called PHOTOSYNTHETIC REACTION CENTER (L SUBUNIT).

Mol	Chain	Residues	Atoms					ZeroOcc	AltConf	Trace
			Total	C	N	O	S			
1	L	281	Total	C	N	O	S	0	0	0
			2232	1507	355	362	8			
1	N	281	Total	C	N	O	S	0	0	0
			2232	1507	355	362	8			

- Molecule 2 is a protein called PHOTOSYNTHETIC REACTION CENTER (M SUBUNIT).

Mol	Chain	Residues	Atoms					ZeroOcc	AltConf	Trace
			Total	C	N	O	S			
2	M	299	Total	C	N	O	S	0	0	0
			2390	1597	391	392	10			
2	O	299	Total	C	N	O	S	0	0	0
			2390	1597	391	392	10			

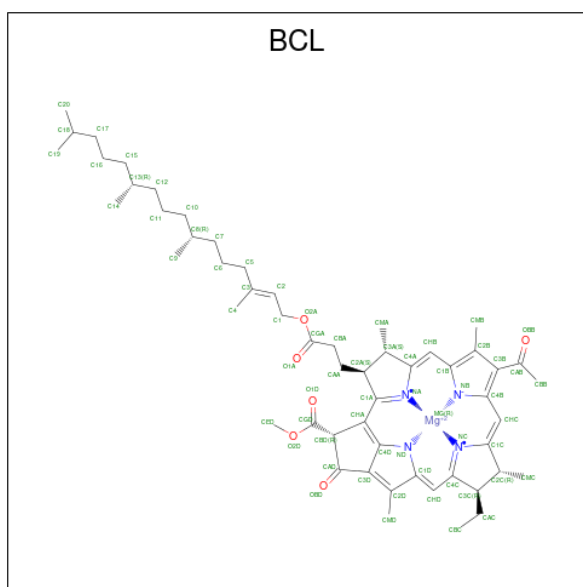
- Molecule 3 is a protein called PHOTOSYNTHETIC REACTION CENTER (H SUBUNIT).

Mol	Chain	Residues	Atoms					ZeroOcc	AltConf	Trace
			Total	C	N	O	S			
3	H	248	Total	C	N	O	S	0	0	0
			1883	1204	322	347	10			
3	P	248	Total	C	N	O	S	0	0	0
			1883	1204	322	347	10			

There are 2 discrepancies between the modelled and reference sequences:

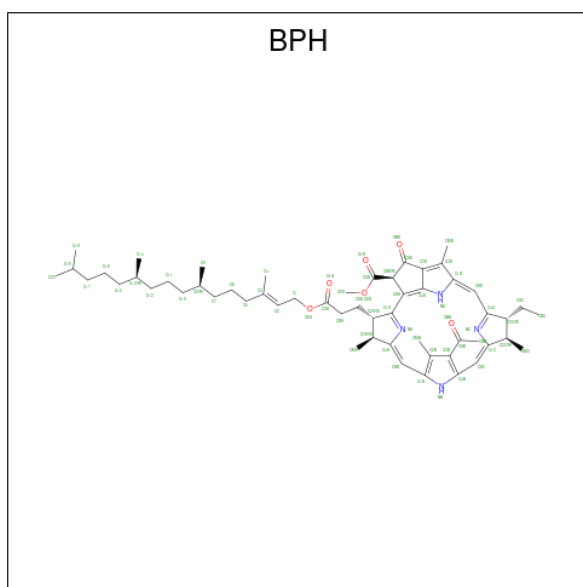
Chain	Residue	Modelled	Actual	Comment	Reference
H	8	GLN	GLY	conflict	UNP P11846
P	8	GLN	GLY	conflict	UNP P11846

- Molecule 4 is BACTERIOCHLOROPHYLL A (three-letter code: BCL) (formula:  $C_{55}H_{74}MgN_4O_6$ ).



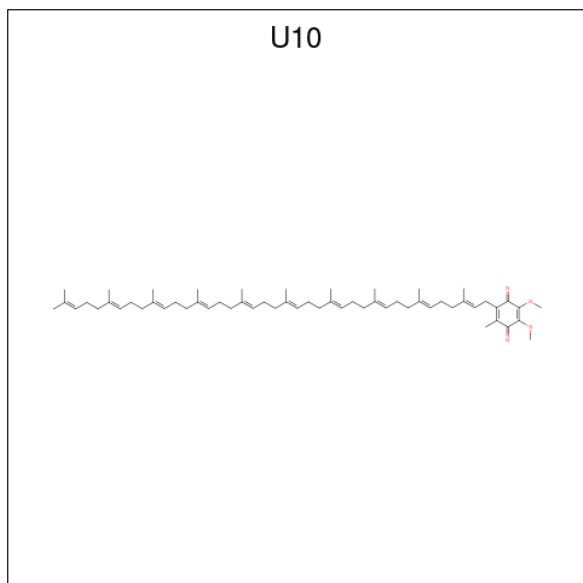
Mol	Chain	Residues	Atoms				ZeroOcc	AltConf	
			Total	C	Mg	N			O
4	L	1	Total	C	Mg	N	O	0	0
			66	55	1	4	6		
4	L	1	Total	C	Mg	N	O	0	0
			66	55	1	4	6		
4	M	1	Total	C	Mg	N	O	0	0
			66	55	1	4	6		
4	M	1	Total	C	Mg	N	O	0	0
			66	55	1	4	6		
4	N	1	Total	C	Mg	N	O	12	0
			66	55	1	4	6		
4	N	1	Total	C	Mg	N	O	0	0
			66	55	1	4	6		
4	N	1	Total	C	Mg	N	O	0	0
			66	55	1	4	6		
4	O	1	Total	C	Mg	N	O	0	0
			66	55	1	4	6		

- Molecule 5 is BACTERIOPHEOPHYTIN A (three-letter code: BPH) (formula:  $C_{55}H_{76}N_4O_6$ ).



Mol	Chain	Residues	Atoms				ZeroOcc	AltConf
			Total	C	N	O		
5	L	1	65	55	4	6	14	0
5	L	1	65	55	4	6	0	0
5	N	1	65	55	4	6	0	0
5	O	1	65	55	4	6	0	0

- Molecule 6 is UBIQUINONE-10 (three-letter code: U10) (formula:  $C_{59}H_{90}O_4$ ).



Mol	Chain	Residues	Atoms		ZeroOcc	AltConf
6	L	1	Total	C O	0	0
			63	59 4		
6	M	1	Total	C O	0	0
			63	59 4		
6	N	1	Total	C O	19	0
			63	59 4		
6	O	1	Total	C O	0	0
			63	59 4		

- Molecule 7 is FE (II) ION (three-letter code: FE2) (formula: Fe).

Mol	Chain	Residues	Atoms		ZeroOcc	AltConf
7	M	1	Total	Fe	0	0
			1	1		
7	O	1	Total	Fe	0	0
			1	1		

- Molecule 8 is water.

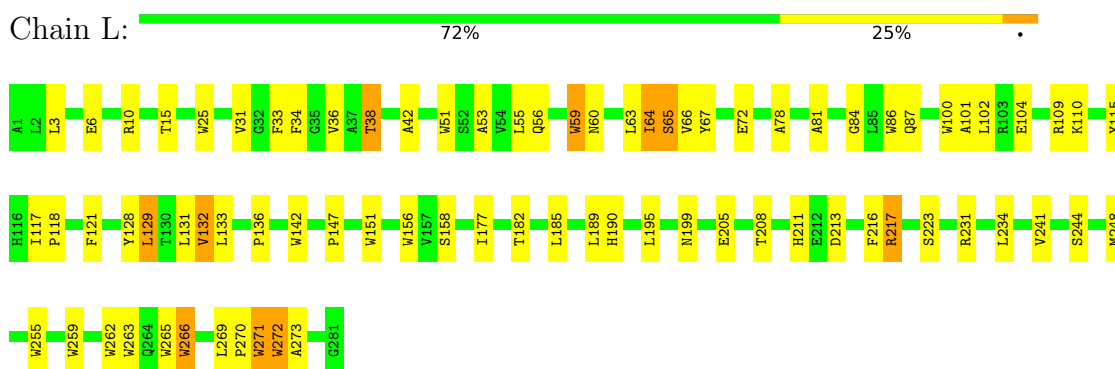
Mol	Chain	Residues	Atoms		ZeroOcc	AltConf
8	L	19	Total	O	0	0
			19	19		
8	M	21	Total	O	0	0
			21	21		
8	H	13	Total	O	0	0
			13	13		
8	N	13	Total	O	0	0
			13	13		
8	O	15	Total	O	0	0
			15	15		
8	P	5	Total	O	0	0
			5	5		

### 3 Residue-property plots

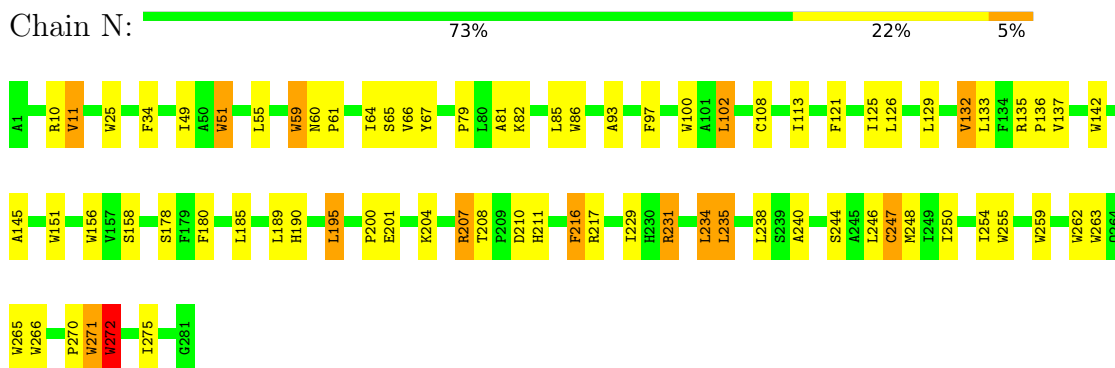
These plots are drawn for all protein, RNA, DNA and oligosaccharide chains in the entry. The first graphic for a chain summarises the proportions of the various outlier classes displayed in the second graphic. The second graphic shows the sequence view annotated by issues in geometry. Residues are color-coded according to the number of geometric quality criteria for which they contain at least one outlier: green = 0, yellow = 1, orange = 2 and red = 3 or more. Stretches of 2 or more consecutive residues without any outlier are shown as a green connector. Residues present in the sample, but not in the model, are shown in grey.

Note EDS was not executed.

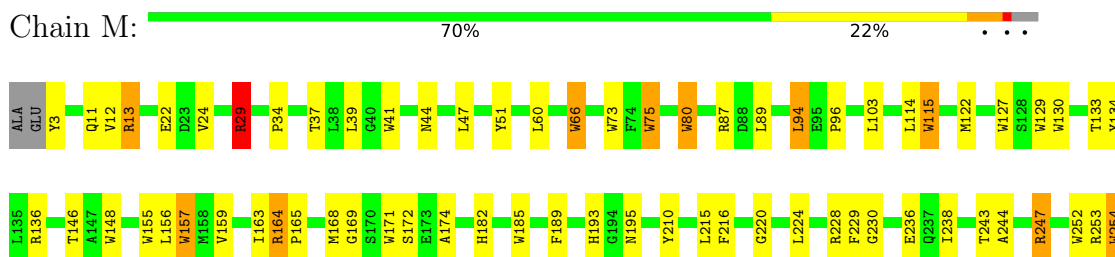
- Molecule 1: PHOTOSYNTHETIC REACTION CENTER (L SUBUNIT)



- Molecule 1: PHOTOSYNTHETIC REACTION CENTER (L SUBUNIT)



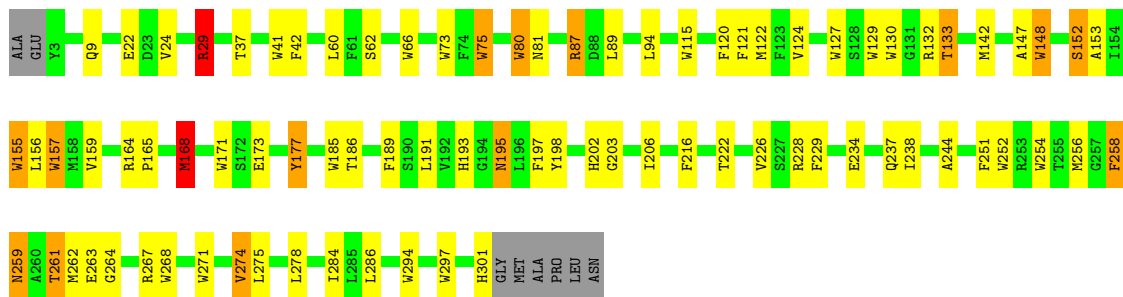
- Molecule 2: PHOTOSYNTHETIC REACTION CENTER (M SUBUNIT)



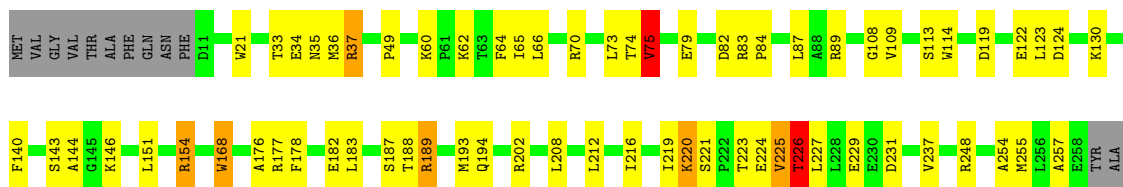




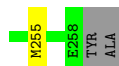
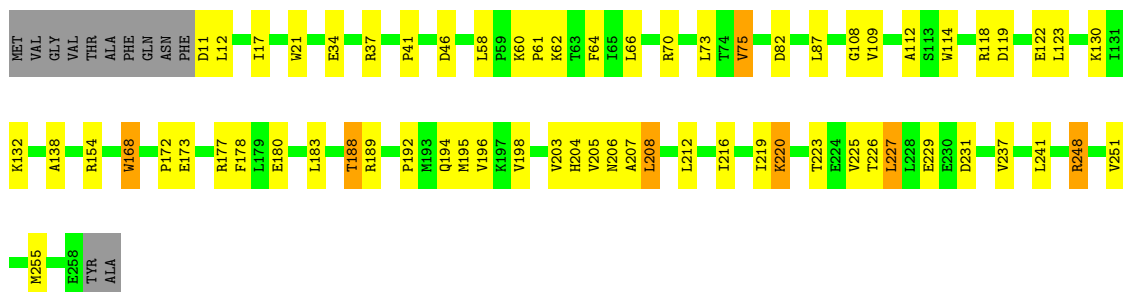
● Molecule 2: PHOTOSYNTHETIC REACTION CENTER (M SUBUNIT)



● Molecule 3: PHOTOSYNTHETIC REACTION CENTER (H SUBUNIT)



● Molecule 3: PHOTOSYNTHETIC REACTION CENTER (H SUBUNIT)



## 4 Data and refinement statistics

Xtrriage (Phenix) and EDS were not executed - this section is therefore incomplete.

Property	Value	Source
Space group	P 43 21 2	Depositor
Cell constants a, b, c, $\alpha$ , $\beta$ , $\gamma$	140.10Å 140.10Å 271.70Å 90.00° 90.00° 90.00°	Depositor
Resolution (Å)	30.00 – 2.60	Depositor
% Data completeness (in resolution range)	88.0 (30.00-2.60)	Depositor
$R_{merge}$	(Not available)	Depositor
$R_{sym}$	0.09	Depositor
Refinement program	X-PLOR 3.89	Depositor
R, $R_{free}$	0.215 , 0.299	Depositor
Estimated twinning fraction	No twinning to report.	Xtrriage
Total number of atoms	14138	wwPDB-VP
Average B, all atoms (Å <sup>2</sup> )	56.0	wwPDB-VP

## 5 Model quality i

### 5.1 Standard geometry i

Bond lengths and bond angles in the following residue types are not validated in this section: BCL, U10, BPH, FE2

The Z score for a bond length (or angle) is the number of standard deviations the observed value is removed from the expected value. A bond length (or angle) with  $|Z| > 5$  is considered an outlier worth inspection. RMSZ is the root-mean-square of all Z scores of the bond lengths (or angles).

Mol	Chain	Bond lengths		Bond angles	
		RMSZ	# Z  >5	RMSZ	# Z  >5
1	L	0.87	0/2320	1.65	69/3175 (2.2%)
1	N	0.85	0/2320	1.59	53/3175 (1.7%)
2	M	0.90	0/2482	1.68	81/3389 (2.4%)
2	O	0.89	0/2482	1.60	68/3389 (2.0%)
3	H	0.76	0/1931	1.44	23/2627 (0.9%)
3	P	0.75	0/1931	1.38	15/2627 (0.6%)
All	All	0.85	0/13466	1.57	309/18382 (1.7%)

There are no bond length outliers.

All (309) bond angle outliers are listed below:

Mol	Chain	Res	Type	Atoms	Z	Observed(°)	Ideal(°)
1	L	217	ARG	NE-CZ-NH1	9.66	125.13	120.30
2	M	41	TRP	CD1-CG-CD2	9.54	113.93	106.30
2	O	297	TRP	CD1-CG-CD2	9.42	113.83	106.30
1	N	231	ARG	NE-CZ-NH1	9.41	125.01	120.30
3	H	37	ARG	NE-CZ-NH2	-9.33	115.64	120.30
1	L	51	TRP	CD1-CG-CD2	9.28	113.72	106.30
2	M	254	TRP	CD1-CG-CD2	9.26	113.70	106.30
2	O	157	TRP	CD1-CG-CD2	9.12	113.60	106.30
1	N	25	TRP	CD1-CG-CD2	9.09	113.57	106.30
1	N	51	TRP	CD1-CG-CD2	9.07	113.56	106.30
1	N	59	TRP	CD1-CG-CD2	9.05	113.54	106.30
1	L	217	ARG	NE-CZ-NH2	-9.01	115.79	120.30
2	M	171	TRP	CD1-CG-CD2	8.90	113.42	106.30
2	O	271	TRP	CD1-CG-CD2	8.81	113.35	106.30
2	M	297	TRP	CD1-CG-CD2	8.74	113.29	106.30
1	N	142	TRP	CD1-CG-CD2	8.66	113.23	106.30
2	M	185	TRP	CD1-CG-CD2	8.64	113.21	106.30
1	N	100	TRP	CD1-CG-CD2	8.63	113.20	106.30

*Continued on next page...*

*Continued from previous page...*

Mol	Chain	Res	Type	Atoms	Z	Observed(°)	Ideal(°)
2	O	130	TRP	CD1-CG-CD2	8.58	113.17	106.30
1	L	86	TRP	CD1-CG-CD2	8.57	113.16	106.30
2	O	171	TRP	CD1-CG-CD2	8.55	113.14	106.30
2	M	80	TRP	CD1-CG-CD2	8.51	113.11	106.30
1	L	59	TRP	CD1-CG-CD2	8.51	113.10	106.30
1	L	142	TRP	CD1-CG-CD2	8.46	113.06	106.30
2	M	66	TRP	CD1-CG-CD2	8.32	112.96	106.30
1	N	25	TRP	CE2-CD2-CG	-8.28	100.68	107.30
1	L	255	TRP	CD1-CG-CD2	8.26	112.91	106.30
1	L	272	TRP	CD1-CG-CD2	8.22	112.88	106.30
1	N	151	TRP	CD1-CG-CD2	8.22	112.88	106.30
2	M	171	TRP	CE2-CD2-CG	-8.20	100.74	107.30
1	L	142	TRP	CE2-CD2-CG	-8.19	100.75	107.30
2	M	75	TRP	CD1-CG-CD2	8.19	112.85	106.30
3	P	21	TRP	CD1-CG-CD2	8.18	112.84	106.30
2	O	185	TRP	CD1-CG-CD2	8.15	112.82	106.30
2	O	148	TRP	CD1-CG-CD2	8.14	112.81	106.30
1	N	59	TRP	CE2-CD2-CG	-8.13	100.79	107.30
2	O	75	TRP	CD1-CG-CD2	8.13	112.80	106.30
2	O	148	TRP	CE2-CD2-CG	-8.13	100.80	107.30
1	L	151	TRP	CD1-CG-CD2	8.12	112.79	106.30
2	M	127	TRP	CD1-CG-CD2	8.10	112.78	106.30
2	M	148	TRP	CE2-CD2-CG	-8.08	100.84	107.30
1	N	263	TRP	CD1-CG-CD2	8.07	112.76	106.30
2	M	41	TRP	CE2-CD2-CG	-8.06	100.85	107.30
2	O	129	TRP	CD1-CG-CD2	8.05	112.74	106.30
2	M	148	TRP	CD1-CG-CD2	8.02	112.71	106.30
2	O	29	ARG	NE-CZ-NH1	8.01	124.31	120.30
1	L	59	TRP	CE2-CD2-CG	-7.99	100.91	107.30
1	N	262	TRP	CD1-CG-CD2	7.98	112.68	106.30
3	H	168	TRP	CD1-CG-CD2	7.97	112.67	106.30
1	N	259	TRP	CD1-CG-CD2	7.93	112.64	106.30
1	L	51	TRP	CE2-CD2-CG	-7.92	100.97	107.30
2	M	254	TRP	CE2-CD2-CG	-7.89	100.99	107.30
2	M	80	TRP	CE2-CD2-CG	-7.88	100.99	107.30
2	O	297	TRP	CE2-CD2-CG	-7.88	101.00	107.30
2	O	294	TRP	CD1-CG-CD2	7.88	112.60	106.30
1	N	142	TRP	CE2-CD2-CG	-7.82	101.05	107.30
2	M	155	TRP	CE2-CD2-CG	-7.81	101.05	107.30
2	M	129	TRP	CD1-CG-CD2	7.81	112.55	106.30
2	O	294	TRP	CE2-CD2-CG	-7.79	101.07	107.30
1	L	231	ARG	NE-CZ-NH1	7.79	124.19	120.30

*Continued on next page...*

*Continued from previous page...*

Mol	Chain	Res	Type	Atoms	Z	Observed(°)	Ideal(°)
1	N	86	TRP	CD1-CG-CD2	7.77	112.52	106.30
1	N	255	TRP	CD1-CG-CD2	7.77	112.51	106.30
1	N	51	TRP	CE2-CD2-CG	-7.76	101.09	107.30
3	H	114	TRP	CD1-CG-CD2	7.76	112.51	106.30
3	P	21	TRP	CE2-CD2-CG	-7.76	101.09	107.30
3	P	168	TRP	CD1-CG-CD2	7.76	112.50	106.30
1	L	259	TRP	CD1-CG-CD2	7.75	112.50	106.30
3	H	37	ARG	NE-CZ-NH1	7.75	124.18	120.30
1	L	263	TRP	CE2-CD2-CG	-7.74	101.11	107.30
2	O	157	TRP	CE2-CD2-CG	-7.71	101.13	107.30
1	L	151	TRP	CE2-CD2-CG	-7.69	101.15	107.30
3	P	114	TRP	CD1-CG-CD2	7.69	112.45	106.30
2	M	185	TRP	CE2-CD2-CG	-7.69	101.15	107.30
2	M	297	TRP	CE2-CD2-CG	-7.68	101.16	107.30
2	M	3	TYR	CB-CG-CD2	-7.67	116.40	121.00
2	O	271	TRP	CE2-CD2-CG	-7.66	101.17	107.30
2	O	75	TRP	CE2-CD2-CG	-7.66	101.18	107.30
2	O	171	TRP	CE2-CD2-CG	-7.65	101.18	107.30
1	N	151	TRP	CE2-CD2-CG	-7.62	101.20	107.30
1	L	156	TRP	CD1-CG-CD2	7.60	112.38	106.30
1	N	263	TRP	CE2-CD2-CG	-7.59	101.22	107.30
1	L	266	TRP	CE2-CD2-CG	-7.59	101.23	107.30
1	N	86	TRP	CE2-CD2-CG	-7.58	101.24	107.30
1	L	266	TRP	CD1-CG-CD2	7.56	112.35	106.30
1	L	86	TRP	CE2-CD2-CG	-7.55	101.26	107.30
3	P	118	ARG	NE-CZ-NH1	7.52	124.06	120.30
2	M	157	TRP	CD1-CG-CD2	7.52	112.32	106.30
2	M	75	TRP	CE2-CD2-CG	-7.52	101.28	107.30
1	N	217	ARG	NE-CZ-NH1	7.52	124.06	120.30
1	N	100	TRP	CE2-CD2-CG	-7.50	101.30	107.30
2	O	185	TRP	CE2-CD2-CG	-7.50	101.30	107.30
2	M	155	TRP	CD1-CG-CD2	7.49	112.29	106.30
1	L	259	TRP	CE2-CD2-CG	-7.48	101.32	107.30
2	M	127	TRP	CE2-CD2-CG	-7.47	101.32	107.30
2	O	66	TRP	CD1-CG-CD2	7.47	112.28	106.30
1	L	271	TRP	CE2-CD2-CG	-7.45	101.34	107.30
1	L	265	TRP	CD1-CG-CD2	7.45	112.26	106.30
2	O	80	TRP	CD1-CG-CD2	7.44	112.25	106.30
2	O	130	TRP	CE2-CD2-CG	-7.44	101.35	107.30
2	M	129	TRP	CE2-CD2-CG	-7.43	101.36	107.30
2	O	252	TRP	CD1-CG-CD2	7.41	112.23	106.30
1	N	259	TRP	CE2-CD2-CG	-7.41	101.38	107.30

*Continued on next page...*

*Continued from previous page...*

Mol	Chain	Res	Type	Atoms	Z	Observed(°)	Ideal(°)
1	L	263	TRP	CD1-CG-CD2	7.40	112.22	106.30
3	H	168	TRP	CE2-CD2-CG	-7.38	101.39	107.30
2	M	294	TRP	CE2-CD2-CG	-7.37	101.40	107.30
1	N	265	TRP	CD1-CG-CD2	7.37	112.20	106.30
1	L	255	TRP	CE2-CD2-CG	-7.36	101.41	107.30
1	N	262	TRP	CE2-CD2-CG	-7.36	101.41	107.30
2	O	41	TRP	CD1-CG-CD2	7.36	112.19	106.30
1	L	100	TRP	CD1-CG-CD2	7.35	112.18	106.30
1	N	255	TRP	CE2-CD2-CG	-7.34	101.43	107.30
2	O	80	TRP	CE2-CD2-CG	-7.33	101.43	107.30
2	M	268	TRP	CD1-CG-CD2	7.31	112.15	106.30
3	P	114	TRP	CE2-CD2-CG	-7.31	101.45	107.30
1	N	272	TRP	CD1-CG-CD2	7.31	112.15	106.30
2	M	73	TRP	CD1-CG-CD2	7.30	112.14	106.30
1	L	265	TRP	CE2-CD2-CG	-7.29	101.47	107.30
2	O	115	TRP	CD1-CG-CD2	7.28	112.13	106.30
1	L	100	TRP	CE2-CD2-CG	-7.28	101.47	107.30
1	L	25	TRP	CE2-CD2-CG	-7.28	101.48	107.30
2	M	73	TRP	CE2-CD2-CG	-7.27	101.49	107.30
3	H	114	TRP	CE2-CD2-CG	-7.24	101.51	107.30
3	P	168	TRP	CE2-CD2-CG	-7.22	101.52	107.30
2	M	148	TRP	CG-CD2-CE3	7.21	140.39	133.90
2	O	115	TRP	CE2-CD2-CG	-7.20	101.54	107.30
3	H	89	ARG	NE-CZ-NH1	7.20	123.90	120.30
2	M	130	TRP	CD1-CG-CD2	7.19	112.05	106.30
1	N	266	TRP	CD1-CG-CD2	7.18	112.05	106.30
2	O	41	TRP	CE2-CD2-CG	-7.17	101.57	107.30
1	L	271	TRP	CD1-CG-CD2	7.16	112.03	106.30
2	O	129	TRP	CE2-CD2-CG	-7.16	101.57	107.30
2	O	268	TRP	CD1-CG-CD2	7.16	112.03	106.30
1	N	271	TRP	CA-CB-CG	7.15	127.29	113.70
1	N	266	TRP	CE2-CD2-CG	-7.15	101.58	107.30
2	M	268	TRP	CE2-CD2-CG	-7.14	101.59	107.30
2	M	271	TRP	CD1-CG-CD2	7.14	112.01	106.30
2	M	271	TRP	CE2-CD2-CG	-7.12	101.60	107.30
2	M	134	TYR	CB-CG-CD2	-7.12	116.73	121.00
2	O	66	TRP	CE2-CD2-CG	-7.11	101.62	107.30
2	O	252	TRP	CE2-CD2-CG	-7.10	101.62	107.30
3	H	21	TRP	CE2-CD2-CG	-7.10	101.62	107.30
2	O	127	TRP	CE2-CD2-CG	-7.09	101.63	107.30
2	O	268	TRP	CE2-CD2-CG	-7.08	101.64	107.30
2	M	66	TRP	CE2-CD2-CG	-7.06	101.65	107.30

*Continued on next page...*

*Continued from previous page...*

Mol	Chain	Res	Type	Atoms	Z	Observed(°)	Ideal(°)
2	M	252	TRP	CE2-CD2-CG	-7.03	101.68	107.30
2	O	148	TRP	CG-CD2-CE3	7.02	140.22	133.90
2	M	157	TRP	CE2-CD2-CG	-7.01	101.69	107.30
2	M	294	TRP	CD1-CG-CD2	6.96	111.87	106.30
1	N	265	TRP	CE2-CD2-CG	-6.95	101.74	107.30
2	O	254	TRP	CE2-CD2-CG	-6.95	101.74	107.30
1	L	25	TRP	CD1-CG-CD2	6.94	111.86	106.30
2	M	115	TRP	CE2-CD2-CG	-6.93	101.75	107.30
1	L	272	TRP	CE2-CD2-CG	-6.93	101.76	107.30
1	N	156	TRP	CE2-CD2-CG	-6.92	101.77	107.30
2	M	130	TRP	CE2-CD2-CG	-6.91	101.77	107.30
1	L	156	TRP	CE2-CD2-CG	-6.90	101.78	107.30
1	N	271	TRP	CE2-CD2-CG	-6.85	101.82	107.30
2	O	155	TRP	CE2-CD2-CG	-6.84	101.83	107.30
2	O	127	TRP	CD1-CG-CD2	6.81	111.75	106.30
2	O	73	TRP	CE2-CD2-CG	-6.78	101.88	107.30
2	M	171	TRP	CG-CD2-CE3	6.73	139.96	133.90
1	L	262	TRP	CE2-CD2-CG	-6.71	101.93	107.30
1	L	262	TRP	CD1-CG-CD2	6.66	111.62	106.30
2	M	171	TRP	CB-CG-CD1	-6.64	118.36	127.00
2	O	155	TRP	CD1-CG-CD2	6.61	111.58	106.30
2	O	254	TRP	CD1-CG-CD2	6.58	111.56	106.30
2	M	247	ARG	NE-CZ-NH1	6.56	123.58	120.30
1	N	156	TRP	CD1-CG-CD2	6.56	111.55	106.30
3	H	225	VAL	CB-CA-C	-6.54	98.97	111.40
1	N	272	TRP	CE2-CD2-CG	-6.54	102.07	107.30
2	M	115	TRP	CD1-CG-CD2	6.54	111.53	106.30
2	O	148	TRP	CB-CG-CD1	-6.49	118.56	127.00
2	M	148	TRP	CB-CG-CD1	-6.46	118.60	127.00
1	L	151	TRP	CG-CD2-CE3	6.44	139.70	133.90
2	M	252	TRP	CD1-CG-CD2	6.41	111.43	106.30
1	L	86	TRP	CG-CD2-CE3	6.40	139.66	133.90
1	L	265	TRP	CG-CD2-CE3	6.37	139.63	133.90
1	N	25	TRP	CG-CD2-CE3	6.36	139.62	133.90
2	M	136	ARG	NE-CZ-NH1	6.34	123.47	120.30
2	O	185	TRP	CG-CD2-CE3	6.34	139.60	133.90
1	L	271	TRP	CG-CD2-CE3	6.31	139.58	133.90
3	P	255	MET	CA-CB-CG	6.28	123.98	113.30
1	L	265	TRP	CB-CG-CD1	-6.28	118.84	127.00
3	H	21	TRP	CD1-CG-CD2	6.28	111.32	106.30
2	M	261	THR	CA-CB-CG2	6.27	121.17	112.40
3	P	118	ARG	NE-CZ-NH2	-6.26	117.17	120.30

*Continued on next page...*

*Continued from previous page...*

Mol	Chain	Res	Type	Atoms	Z	Observed(°)	Ideal(°)
2	M	136	ARG	NE-CZ-NH2	-6.25	117.17	120.30
3	H	248	ARG	NE-CZ-NH1	6.20	123.40	120.30
2	O	73	TRP	CD1-CG-CD2	6.20	111.26	106.30
1	L	271	TRP	CB-CG-CD1	-6.18	118.96	127.00
1	L	142	TRP	CG-CD2-CE3	6.17	139.45	133.90
1	L	59	TRP	CG-CD2-CE3	6.16	139.44	133.90
3	H	237	VAL	CG1-CB-CG2	-6.13	101.09	110.90
2	O	259	ASN	N-CA-C	6.13	127.54	111.00
1	L	25	TRP	CG-CD2-CE3	6.12	139.41	133.90
1	L	142	TRP	CB-CG-CD1	-6.11	119.06	127.00
2	M	259	ASN	N-CA-C	6.09	127.44	111.00
3	H	89	ARG	NE-CZ-NH2	-6.08	117.26	120.30
2	M	254	TRP	CG-CD1-NE1	-6.07	104.03	110.10
1	L	151	TRP	CB-CG-CD1	-6.06	119.12	127.00
3	H	220	LYS	CA-CB-CG	6.05	126.70	113.40
1	N	86	TRP	CG-CD2-CE3	6.01	139.31	133.90
1	L	266	TRP	CB-CG-CD1	-5.98	119.23	127.00
2	M	13	ARG	NE-CZ-NH2	-5.98	117.31	120.30
1	N	263	TRP	CG-CD2-CE3	5.98	139.28	133.90
1	L	100	TRP	CG-CD2-CE3	5.96	139.26	133.90
3	H	21	TRP	CG-CD2-CE3	5.96	139.26	133.90
1	N	59	TRP	CG-CD2-CE3	5.95	139.26	133.90
2	O	185	TRP	CB-CG-CD1	-5.95	119.27	127.00
1	N	271	TRP	CD1-CG-CD2	5.95	111.06	106.30
1	L	271	TRP	CA-CB-CG	5.94	124.99	113.70
2	O	157	TRP	CG-CD1-NE1	-5.91	104.19	110.10
1	L	25	TRP	CB-CG-CD1	-5.91	119.31	127.00
3	P	248	ARG	NE-CZ-NH1	5.91	123.26	120.30
1	L	266	TRP	CG-CD2-CE3	5.91	139.22	133.90
2	M	51	TYR	CB-CG-CD2	-5.90	117.46	121.00
1	L	86	TRP	CG-CD1-NE1	-5.90	104.20	110.10
2	M	41	TRP	CG-CD2-CE3	5.89	139.20	133.90
1	N	25	TRP	CB-CG-CD1	-5.85	119.40	127.00
2	M	258	PHE	CA-C-N	5.81	129.98	117.20
2	O	168	MET	CG-SD-CE	-5.81	90.91	100.20
2	O	87	ARG	NE-CZ-NH1	5.79	123.20	120.30
2	M	29	ARG	NE-CZ-NH1	5.78	123.19	120.30
1	L	244	SER	N-CA-CB	-5.77	101.85	110.50
1	N	51	TRP	CG-CD1-NE1	-5.77	104.33	110.10
1	L	51	TRP	CG-CD1-NE1	-5.75	104.35	110.10
2	M	87	ARG	NE-CZ-NH1	5.75	123.18	120.30
2	O	297	TRP	CG-CD1-NE1	-5.75	104.35	110.10

*Continued on next page...*



*Continued from previous page...*

Mol	Chain	Res	Type	Atoms	Z	Observed(°)	Ideal(°)
1	L	67	TYR	CB-CG-CD1	-5.72	117.57	121.00
1	N	263	TRP	CB-CG-CD1	-5.72	119.56	127.00
2	M	168	MET	CG-SD-CE	-5.71	91.06	100.20
3	H	154	ARG	NE-CZ-NH2	-5.71	117.45	120.30
2	O	294	TRP	CG-CD2-CE3	5.69	139.02	133.90
2	M	41	TRP	CB-CG-CD1	-5.67	119.63	127.00
2	M	41	TRP	CG-CD1-NE1	-5.67	104.43	110.10
2	M	185	TRP	CG-CD1-NE1	-5.67	104.43	110.10
2	M	247	ARG	NE-CZ-NH2	-5.65	117.48	120.30
1	N	86	TRP	CB-CG-CD1	-5.59	119.73	127.00
2	O	171	TRP	CG-CD1-NE1	-5.59	104.51	110.10
1	L	86	TRP	CB-CG-CD1	-5.57	119.76	127.00
2	O	274	VAL	CA-CB-CG2	-5.56	102.56	110.90
2	M	297	TRP	CG-CD1-NE1	-5.53	104.57	110.10
2	O	294	TRP	CB-CG-CD1	-5.53	119.81	127.00
2	O	171	TRP	CG-CD2-CE3	5.47	138.82	133.90
2	M	164	ARG	NE-CZ-NH1	5.46	123.03	120.30
1	N	25	TRP	CG-CD1-NE1	-5.45	104.65	110.10
2	M	258	PHE	N-CA-C	5.45	125.71	111.00
3	H	202	ARG	NE-CZ-NH2	-5.44	117.58	120.30
1	L	65	SER	CA-C-N	5.44	129.17	117.20
1	N	100	TRP	CG-CD1-NE1	-5.42	104.67	110.10
2	M	171	TRP	CG-CD1-NE1	-5.42	104.68	110.10
2	O	171	TRP	CB-CG-CD1	-5.42	119.95	127.00
2	M	185	TRP	CG-CD2-CE3	5.41	138.77	133.90
1	N	59	TRP	CG-CD1-NE1	-5.41	104.69	110.10
2	O	256	MET	CA-CB-CG	5.40	122.48	113.30
1	L	59	TRP	CB-CG-CD1	-5.40	119.98	127.00
1	L	255	TRP	CG-CD1-NE1	-5.39	104.70	110.10
1	L	272	TRP	CG-CD1-NE1	-5.39	104.71	110.10
3	P	21	TRP	CG-CD2-CE3	5.39	138.75	133.90
2	M	80	TRP	CG-CD2-CE3	5.38	138.74	133.90
2	O	130	TRP	CG-CD1-NE1	-5.37	104.73	110.10
2	O	297	TRP	CB-CG-CD1	-5.34	120.06	127.00
1	N	132	VAL	N-CA-CB	-5.33	99.77	111.50
1	L	72	GLU	CA-CB-CG	5.31	125.09	113.40
3	P	208	LEU	CA-CB-CG	5.31	127.51	115.30
2	M	129	TRP	CG-CD1-NE1	-5.29	104.81	110.10
2	O	155	TRP	CB-CG-CD1	-5.28	120.14	127.00
2	M	80	TRP	CB-CG-CD1	-5.27	120.15	127.00
2	O	261	THR	CA-CB-CG2	5.26	119.76	112.40
2	M	254	TRP	CG-CD2-CE3	5.26	138.63	133.90

*Continued on next page...*

*Continued from previous page...*

Mol	Chain	Res	Type	Atoms	Z	Observed(°)	Ideal(°)
3	H	226	THR	N-CA-CB	-5.25	100.32	110.30
3	P	177	ARG	NE-CZ-NH2	-5.25	117.67	120.30
1	L	263	TRP	CG-CD2-CE3	5.24	138.62	133.90
1	N	271	TRP	CG-CD2-CE3	5.22	138.60	133.90
2	M	294	TRP	CG-CD2-CE3	5.21	138.59	133.90
2	M	185	TRP	CB-CG-CD1	-5.21	120.23	127.00
3	H	21	TRP	CB-CG-CD1	-5.21	120.23	127.00
1	L	72	GLU	CB-CA-C	-5.19	100.01	110.40
1	N	266	TRP	CB-CG-CD1	-5.19	120.25	127.00
2	M	267	ARG	NE-CZ-NH1	5.19	122.89	120.30
2	O	271	TRP	CG-CD1-NE1	-5.18	104.92	110.10
2	M	297	TRP	CB-CG-CD1	-5.17	120.27	127.00
3	H	75	VAL	N-CA-CB	-5.17	100.11	111.50
2	O	258	PHE	N-CA-C	5.17	124.96	111.00
1	L	100	TRP	CB-CG-CD1	-5.17	120.28	127.00
1	N	59	TRP	CB-CG-CD1	-5.16	120.29	127.00
1	N	142	TRP	CG-CD1-NE1	-5.16	104.94	110.10
2	M	297	TRP	CG-CD2-CE3	5.15	138.54	133.90
1	L	265	TRP	CG-CD1-NE1	-5.15	104.95	110.10
3	H	87	LEU	CA-CB-CG	5.14	127.12	115.30
3	P	132	LYS	CA-CB-CG	5.14	124.70	113.40
2	M	80	TRP	CG-CD1-NE1	-5.14	104.96	110.10
1	L	156	TRP	CG-CD1-NE1	-5.13	104.97	110.10
2	M	155	TRP	CB-CG-CD1	-5.13	120.33	127.00
2	M	253	ARG	NE-CZ-NH1	5.12	122.86	120.30
2	O	129	TRP	CG-CD1-NE1	-5.11	104.99	110.10
3	P	220	LYS	CA-CB-CG	5.10	124.62	113.40
1	N	10	ARG	NE-CZ-NH1	5.09	122.85	120.30
2	O	132	ARG	NE-CZ-NH1	5.09	122.84	120.30
1	L	263	TRP	CB-CG-CD1	-5.08	120.40	127.00
2	O	80	TRP	CG-CD2-CE3	5.07	138.47	133.90
2	O	177	TYR	CB-CG-CD1	-5.07	117.96	121.00
1	L	10	ARG	NE-CZ-NH1	5.06	122.83	120.30
2	O	80	TRP	CB-CG-CD1	-5.06	120.43	127.00
1	L	59	TRP	CG-CD1-NE1	-5.05	105.05	110.10
3	H	74	THR	CA-C-N	-5.04	106.11	117.20
1	N	265	TRP	CB-CG-CD1	-5.02	120.47	127.00
2	M	75	TRP	CG-CD1-NE1	-5.01	105.09	110.10
3	H	189	ARG	NE-CZ-NH1	5.00	122.80	120.30

There are no chirality outliers.

There are no planarity outliers.

## 5.2 Too-close contacts [i](#)

In the following table, the Non-H and H(model) columns list the number of non-hydrogen atoms and hydrogen atoms in the chain respectively. The H(added) column lists the number of hydrogen atoms added and optimized by MolProbity. The Clashes column lists the number of clashes within the asymmetric unit, whereas Symm-Clashes lists symmetry-related clashes.

Mol	Chain	Non-H	H(model)	H(added)	Clashes	Symm-Clashes
1	L	2232	0	2187	39	0
1	N	2232	0	2187	40	0
2	M	2390	0	2304	36	0
2	O	2390	0	2304	47	0
3	H	1883	0	1895	30	0
3	P	1883	0	1895	30	0
4	L	132	0	148	11	0
4	M	132	0	148	12	0
4	N	198	0	222	18	0
4	O	66	0	74	9	0
5	L	130	0	152	11	0
5	N	65	0	76	7	0
5	O	65	0	76	3	0
6	L	63	0	90	4	0
6	M	63	0	90	1	0
6	N	63	0	90	6	0
6	O	63	0	90	2	0
7	M	1	0	0	0	0
7	O	1	0	0	0	0
8	H	13	0	0	3	0
8	L	19	0	0	4	0
8	M	21	0	0	0	0
8	N	13	0	0	0	0
8	O	15	0	0	1	0
8	P	5	0	0	0	0
All	All	14138	0	14028	238	0

The all-atom clashscore is defined as the number of clashes found per 1000 atoms (including hydrogen atoms). The all-atom clashscore for this structure is 9.

All (238) close contacts within the same asymmetric unit are listed below, sorted by their clash magnitude.

Atom-1	Atom-2	Interatomic distance (Å)	Clash overlap (Å)
2:M:275:LEU:O	2:M:279:THR:HB	1.86	0.75
4:N:282:BCL:HBB3	4:O:309:BCL:H41	1.71	0.72

*Continued on next page...*

*Continued from previous page...*

Atom-1	Atom-2	Interatomic distance (Å)	Clash overlap (Å)
4:N:284:BCL:HED2	2:O:203:GLY:HA3	1.72	0.70
2:M:261:THR:HG22	2:M:264:GLY:H	1.55	0.70
3:H:226:THR:HG22	3:H:229:GLU:H	1.55	0.70
1:L:241:VAL:HG21	5:L:285:BPH:HAC2	1.74	0.70
5:L:285:BPH:HHC	5:L:285:BPH:HBB3	1.74	0.68
2:O:197:PHE:HZ	4:O:309:BCL:HBB2	1.60	0.67
1:L:55:LEU:HD13	1:L:81:ALA:HB2	1.76	0.67
5:L:285:BPH:H142	5:L:285:BPH:H102	1.78	0.65
1:N:229:ILE:HD13	6:N:286:U10:H102	1.79	0.64
5:N:285:BPH:CBB	5:N:285:BPH:HHC	2.28	0.64
2:M:122:MET:HE3	2:M:157:TRP:HE1	1.63	0.63
1:L:60:ASN:O	1:L:64:ILE:HG22	1.98	0.63
4:M:309:BCL:HMB1	4:M:309:BCL:HBB2	1.80	0.63
2:M:133:THR:HG23	2:M:146:THR:HG22	1.81	0.62
1:N:93:ALA:HA	5:N:285:BPH:H9C2	1.80	0.62
1:N:135:ARG:HD2	1:N:248:MET:O	1.99	0.62
1:L:53:ALA:HB2	1:L:64:ILE:HG13	1.83	0.61
4:O:309:BCL:H42	5:O:310:BPH:HBB2	1.83	0.60
3:P:154:ARG:HE	3:P:204:HIS:HD2	1.48	0.60
2:O:275:LEU:HD23	2:O:278:LEU:HD23	1.84	0.59
2:O:122:MET:HE3	2:O:157:TRP:HE1	1.67	0.59
1:L:65:SER:HB2	8:L:289:HOH:O	2.02	0.59
1:L:208:THR:H	1:L:211:HIS:HD2	1.51	0.59
2:O:197:PHE:CZ	4:O:309:BCL:HBB2	2.38	0.59
2:O:122:MET:HE1	2:O:177:TYR:HE1	1.68	0.58
3:P:168:TRP:HB2	3:P:178:PHE:HB2	1.85	0.58
2:M:157:TRP:HB2	4:M:310:BCL:H71	1.85	0.58
3:P:70:ARG:NH2	3:P:123:LEU:HD13	2.19	0.58
3:H:183:LEU:HD11	3:H:189:ARG:HD2	1.86	0.57
1:N:195:LEU:HD11	2:O:267:ARG:HG2	1.86	0.57
3:H:119:ASP:OD1	3:H:226:THR:HG21	2.04	0.57
5:N:285:BPH:HHC	5:N:285:BPH:HBB2	1.87	0.57
2:M:229:PHE:HB2	2:M:244:ALA:HB2	1.85	0.57
2:O:155:TRP:O	2:O:159:VAL:HG23	2.05	0.57
3:H:189:ARG:HD3	3:H:216:ILE:HB	1.86	0.57
2:M:103:LEU:HG	2:M:169:GLY:O	2.03	0.57
1:N:185:LEU:HD13	5:O:310:BPH:ND	2.20	0.56
4:O:309:BCL:HBB3	4:O:309:BCL:HHC	1.88	0.56
1:N:11:VAL:HG23	3:P:87:LEU:HD11	1.87	0.55
2:O:153:ALA:HB2	5:O:310:BPH:HAC1	1.88	0.55
2:M:39:LEU:HD12	2:M:47:LEU:HD11	1.88	0.55

*Continued on next page...*

*Continued from previous page...*

Atom-1	Atom-2	Interatomic distance (Å)	Clash overlap (Å)
1:L:42:ALA:HB2	5:L:285:BPH:H4C1	1.89	0.55
2:O:9:GLN:NE2	3:P:198:VAL:H	2.04	0.54
1:N:97:PHE:HB3	1:N:125:ILE:HG12	1.89	0.54
6:N:286:U10:H322	2:O:42:PHE:CD1	2.43	0.54
2:O:228:ARG:HA	3:P:194:GLN:CG	2.37	0.53
2:M:230:GLY:HA2	8:H:267:HOH:O	2.07	0.53
4:N:282:BCL:HHC	4:N:282:BCL:HBB2	1.88	0.53
4:N:282:BCL:HBB1	2:O:157:TRP:HD1	1.73	0.53
3:H:34:GLU:O	3:H:37:ARG:HG3	2.08	0.53
3:H:37:ARG:HB3	3:H:75:VAL:HG13	1.90	0.53
2:O:228:ARG:HA	3:P:194:GLN:HG3	1.91	0.53
2:O:237:GLN:HB2	2:O:262:MET:HG2	1.90	0.53
4:M:310:BCL:OBB	4:M:310:BCL:HHC	2.09	0.53
1:L:131:LEU:HD21	1:L:248:MET:HG3	1.90	0.53
1:N:178:SER:HA	4:N:282:BCL:HBA2	1.89	0.53
3:P:226:THR:HG22	3:P:229:GLU:H	1.72	0.53
4:L:282:BCL:CBB	4:L:282:BCL:HMB1	2.39	0.53
2:O:261:THR:HG22	2:O:263:GLU:H	1.73	0.53
1:L:56:GLN:HE22	1:L:64:ILE:HA	1.73	0.52
1:N:201:GLU:HB2	1:N:204:LYS:HD2	1.90	0.52
1:L:208:THR:H	1:L:211:HIS:CD2	2.27	0.52
3:H:176:ALA:HB1	3:H:193:MET:HG3	1.90	0.52
3:P:183:LEU:HD11	3:P:189:ARG:HD2	1.90	0.52
1:N:108:CYS:HG	2:O:251:PHE:HE2	1.57	0.52
3:H:219:ILE:HG23	3:H:229:GLU:OE1	2.10	0.51
1:L:177:ILE:HG12	4:L:282:BCL:HMB3	1.92	0.51
2:O:24:VAL:HG11	2:O:29:ARG:NH1	2.26	0.51
4:L:282:BCL:H151	5:L:285:BPH:H2	1.92	0.51
1:N:246:LEU:O	1:N:250:ILE:HB	2.11	0.51
2:O:9:GLN:HE22	3:P:198:VAL:H	1.59	0.51
4:N:282:BCL:HHC	4:N:282:BCL:CBB	2.41	0.51
3:H:119:ASP:HA	3:H:226:THR:HG23	1.93	0.50
2:M:189:PHE:O	2:M:193:HIS:HD2	1.95	0.50
2:O:234:GLU:O	2:O:238:ILE:HG13	2.10	0.50
1:N:208:THR:H	1:N:211:HIS:CD2	2.28	0.50
1:L:84:GLY:HA2	1:L:87:GLN:HE21	1.76	0.50
1:L:269:LEU:O	1:L:273:ALA:HB2	2.12	0.50
5:L:285:BPH:HHC	5:L:285:BPH:CBB	2.41	0.50
2:M:260:ALA:HA	3:H:35:ASN:HB3	1.94	0.50
4:O:309:BCL:HHC	4:O:309:BCL:CBB	2.42	0.49
2:M:13:ARG:O	3:H:140:PHE:HA	2.12	0.49

*Continued on next page...*

*Continued from previous page...*

Atom-1	Atom-2	Interatomic distance (Å)	Clash overlap (Å)
3:H:108:GLY:O	3:H:113:SER:HA	2.12	0.49
1:N:185:LEU:CD2	4:N:282:BCL:H43	2.42	0.49
5:L:285:BPH:HBB2	2:M:210:TYR:HB3	1.94	0.49
3:P:119:ASP:HA	3:P:226:THR:HG23	1.94	0.49
3:P:130:LYS:NZ	3:P:173:GLU:HG3	2.27	0.49
3:P:62:LYS:HE2	3:P:64:PHE:CZ	2.47	0.49
2:M:24:VAL:HG11	2:M:29:ARG:NH1	2.28	0.49
2:M:260:ALA:HB1	3:H:35:ASN:OD1	2.12	0.49
1:N:81:ALA:H	1:N:85:LEU:HB2	1.78	0.49
3:P:41:PRO:HG3	3:P:58:LEU:HD11	1.95	0.49
4:M:309:BCL:H41	4:M:309:BCL:H61	1.61	0.48
3:P:154:ARG:HH21	3:P:204:HIS:CD2	2.31	0.48
6:L:286:U10:H162	4:M:309:BCL:H92	1.96	0.48
3:H:62:LYS:HE2	3:H:64:PHE:CZ	2.48	0.48
1:L:213:ASP:O	1:L:217:ARG:HB2	2.13	0.48
2:O:261:THR:HG22	2:O:264:GLY:H	1.77	0.48
3:P:37:ARG:O	3:P:75:VAL:HG22	2.13	0.48
3:P:207:ALA:HB1	3:P:237:VAL:O	2.14	0.48
1:L:185:LEU:HD13	5:L:284:BPH:ND	2.29	0.47
1:N:208:THR:OG1	1:N:211:HIS:HD2	1.97	0.47
6:N:286:U10:H71	6:N:286:U10:H1M1	1.58	0.47
1:L:182:THR:OG1	4:M:309:BCL:H11	2.14	0.47
6:L:286:U10:H252	6:L:286:U10:H201	1.97	0.47
1:L:33:PHE:O	1:L:36:VAL:HG22	2.14	0.47
1:L:190:HIS:HA	6:L:286:U10:O2	2.14	0.47
3:H:168:TRP:HB2	3:H:178:PHE:HB2	1.96	0.47
1:N:136:PRO:HG2	1:N:145:ALA:HB2	1.96	0.47
2:M:96:PRO:HB2	2:M:172:SER:HA	1.96	0.47
3:P:196:VAL:HG12	3:P:205:VAL:HG22	1.97	0.47
2:M:157:TRP:HD1	4:M:309:BCL:HBB1	1.79	0.47
3:H:177:ARG:NH1	8:H:267:HOH:O	2.46	0.46
1:N:231:ARG:O	1:N:235:LEU:HB2	2.15	0.46
3:P:37:ARG:NH2	3:P:62:LYS:HB2	2.30	0.46
1:L:110:LYS:HD2	2:M:254:TRP:CZ3	2.51	0.46
1:N:79:PRO:HG2	1:N:82:LYS:HB3	1.96	0.46
2:O:202:HIS:HD2	4:O:309:BCL:HED2	1.80	0.46
3:P:130:LYS:NZ	3:P:172:PRO:HG2	2.30	0.46
2:M:94:LEU:HD13	2:M:115:TRP:HA	1.96	0.46
1:N:180:PHE:CE2	1:N:240:ALA:HB1	2.51	0.46
6:L:286:U10:H563	6:L:286:U10:H501	1.96	0.46
8:L:295:HOH:O	3:H:130:LYS:HE2	2.15	0.46

*Continued on next page...*

*Continued from previous page...*

Atom-1	Atom-2	Interatomic distance (Å)	Clash overlap (Å)
1:N:121:PHE:CZ	5:N:285:BPH:HBA2	2.50	0.46
1:N:190:HIS:HA	6:N:286:U10:O2	2.16	0.46
2:M:66:TRP:CD1	2:M:122:MET:HB2	2.51	0.46
4:N:283:BCL:HMB1	4:N:283:BCL:CBB	2.46	0.46
4:N:283:BCL:CGA	4:N:284:BCL:HBC1	2.46	0.46
3:H:66:LEU:HB3	3:H:70:ARG:HB2	1.97	0.46
3:P:189:ARG:HD3	3:P:216:ILE:HB	1.98	0.46
2:O:168:MET:HG2	2:O:173:GLU:HG3	1.99	0.46
3:H:154:ARG:NH2	8:H:270:HOH:O	2.48	0.45
1:L:3:LEU:HB2	1:L:6:GLU:HB2	1.97	0.45
2:O:222:THR:O	2:O:226:VAL:HG22	2.17	0.45
1:N:272:TRP:CE2	2:O:87:ARG:HB3	2.51	0.45
4:N:282:BCL:H3C	2:O:186:THR:OG1	2.16	0.45
1:L:205:GLU:HG2	3:H:65:ILE:HG22	1.98	0.45
5:L:284:BPH:HMA3	4:M:310:BCL:H192	1.99	0.45
4:O:309:BCL:OBB	4:O:309:BCL:HMB1	2.16	0.45
3:P:119:ASP:HA	3:P:226:THR:CG2	2.47	0.45
3:H:182:GLU:HA	3:H:187:SER:O	2.16	0.45
1:N:34:PHE:CE1	1:N:102:LEU:HD23	2.51	0.45
1:L:185:LEU:CD2	4:M:309:BCL:H52	2.47	0.45
2:M:236:GLU:HG3	3:H:122:GLU:CD	2.37	0.45
2:M:238:ILE:HG23	2:M:263:GLU:HB2	1.99	0.45
3:H:219:ILE:HG21	3:H:224:GLU:O	2.16	0.45
6:N:286:U10:H322	2:O:42:PHE:CG	2.51	0.45
2:M:75:TRP:HB3	2:M:80:TRP:CE3	2.51	0.45
2:O:122:MET:HE1	2:O:177:TYR:CE1	2.49	0.45
2:O:206:ILE:HG23	4:O:309:BCL:HMB3	1.98	0.45
1:L:129:LEU:HG	1:L:133:LEU:HD23	1.99	0.44
1:L:199:ASN:HD21	2:M:267:ARG:HH12	1.64	0.44
1:L:60:ASN:HB3	1:L:63:LEU:HD12	2.00	0.44
8:L:300:HOH:O	3:H:79:GLU:HB2	2.17	0.44
4:N:284:BCL:CBB	4:N:284:BCL:HMB1	2.48	0.44
4:N:283:BCL:H11	4:N:284:BCL:HBC3	2.00	0.44
4:N:284:BCL:HMB1	4:N:284:BCL:HBB2	1.99	0.43
2:O:164:ARG:HB3	2:O:165:PRO:HD3	2.00	0.43
2:O:237:GLN:CB	2:O:262:MET:HG2	2.48	0.43
3:P:122:GLU:HB2	3:P:227:LEU:HD11	2.00	0.43
1:N:244:SER:OG	4:N:283:BCL:HBA2	2.18	0.43
1:N:275:ILE:HG21	2:O:81:ASN:ND2	2.33	0.43
4:L:282:BCL:H2C	4:M:310:BCL:H2C	2.00	0.43
1:N:234:LEU:HD22	1:N:238:LEU:HD22	2.00	0.43

*Continued on next page...*

*Continued from previous page...*

Atom-1	Atom-2	Interatomic distance (Å)	Clash overlap (Å)
4:N:283:BCL:H122	5:N:285:BPH:H3A	2.01	0.43
4:N:283:BCL:HHC	4:N:283:BCL:OBB	2.19	0.43
4:L:282:BCL:HBD	4:L:283:BCL:HAC1	2.00	0.43
4:L:283:BCL:HMB1	4:L:283:BCL:HBB2	2.00	0.43
3:P:108:GLY:HA2	3:P:112:ALA:O	2.19	0.43
4:L:283:BCL:HMD2	4:M:310:BCL:HBB3	2.01	0.43
1:L:147:PRO:HB2	8:L:289:HOH:O	2.18	0.43
2:O:62:SER:HB3	2:O:121:PHE:O	2.19	0.43
1:N:93:ALA:HA	5:N:285:BPH:C9	2.48	0.42
2:O:164:ARG:HD2	2:O:284:ILE:HG22	2.01	0.42
2:M:165:PRO:HG2	2:M:174:ALA:HB2	2.00	0.42
1:L:34:PHE:O	1:L:38:THR:HB	2.19	0.42
1:L:78:ALA:H	1:L:87:GLN:HE22	1.66	0.42
6:O:311:U10:H421	6:O:311:U10:H401	1.85	0.42
1:L:121:PHE:CZ	5:L:285:BPH:HBA2	2.54	0.42
4:L:283:BCL:H172	5:L:285:BPH:H142	2.01	0.42
2:M:228:ARG:HA	3:H:194:GLN:CG	2.49	0.42
3:P:241:LEU:HA	3:P:248:ARG:NH2	2.34	0.42
1:N:200:PRO:HB3	1:N:207:ARG:HD3	2.02	0.42
1:L:266:TRP:O	1:L:269:LEU:HB2	2.19	0.42
4:L:282:BCL:HAA2	4:L:283:BCL:HBC1	2.01	0.42
2:M:11:GLN:HB2	3:H:144:ALA:HB3	2.02	0.42
4:N:284:BCL:HMD1	2:O:206:ILE:HD13	2.00	0.42
1:L:158:SER:HA	4:L:282:BCL:HBC1	2.01	0.42
2:M:13:ARG:HB2	3:H:143:SER:HB3	2.02	0.42
2:M:159:VAL:HA	2:M:163:ILE:HB	2.02	0.42
2:M:215:LEU:HD13	6:M:311:U10:H153	2.01	0.42
2:O:152:SER:OG	2:O:274:VAL:HG13	2.19	0.42
1:N:60:ASN:HA	1:N:61:PRO:HD3	1.75	0.42
1:N:180:PHE:CD2	1:N:240:ALA:HB1	2.55	0.42
2:O:229:PHE:HB2	2:O:244:ALA:HB2	2.02	0.42
3:P:192:PRO:HB2	3:P:195:MET:HB2	2.02	0.41
1:L:115:TYR:O	1:L:118:PRO:HG2	2.20	0.41
1:L:128:TYR:O	1:L:132:VAL:HB	2.20	0.41
2:M:220:GLY:O	2:M:224:LEU:HG	2.20	0.41
8:O:322:HOH:O	3:P:34:GLU:HG3	2.19	0.41
3:P:130:LYS:HZ1	3:P:173:GLU:HG3	1.84	0.41
1:N:135:ARG:HB3	1:N:136:PRO:HD3	2.02	0.41
2:O:261:THR:HG22	2:O:263:GLU:N	2.35	0.41
3:H:254:ALA:O	3:H:257:ALA:HB3	2.20	0.41
1:L:109:ARG:HG3	1:L:115:TYR:HE1	1.86	0.41

*Continued on next page...*



Continued from previous page...

Atom-1	Atom-2	Interatomic distance (Å)	Clash overlap (Å)
1:L:117:ILE:H	1:L:117:ILE:HD12	1.86	0.41
2:M:34:PRO:O	2:M:47:LEU:HB2	2.20	0.41
2:M:164:ARG:HB3	2:M:165:PRO:HD3	2.02	0.41
3:H:33:THR:O	3:H:36:MET:HB2	2.19	0.41
1:N:207:ARG:HG2	2:O:142:MET:HG2	2.02	0.41
2:O:120:PHE:O	2:O:124:VAL:HG23	2.20	0.41
1:N:55:LEU:HD13	1:N:81:ALA:HB2	2.02	0.41
1:N:65:SER:HG	1:N:67:TYR:HE1	1.66	0.41
3:P:180:GLU:OE2	3:P:188:THR:HG21	2.21	0.41
2:M:75:TRP:HB3	2:M:80:TRP:CZ3	2.56	0.41
2:O:75:TRP:HB3	2:O:80:TRP:CE3	2.56	0.41
2:O:189:PHE:O	2:O:193:HIS:HD2	2.04	0.41
3:P:206:ASN:O	3:P:248:ARG:NH1	2.54	0.41
2:M:243:THR:O	2:M:247:ARG:HG3	2.20	0.41
1:N:133:LEU:O	1:N:137:VAL:HG23	2.20	0.41
3:H:146:LYS:NZ	3:H:151:LEU:HD21	2.36	0.41
1:N:113:ILE:HD11	2:O:251:PHE:CD2	2.56	0.41
1:N:216:PHE:CG	6:N:286:U10:H72	2.56	0.41
1:N:247:CYS:O	1:N:250:ILE:HG22	2.21	0.41
1:L:15:THR:N	1:L:109:ARG:HH12	2.19	0.40
1:L:185:LEU:HD23	4:M:309:BCL:H52	2.03	0.40
1:N:51:TRP:CE3	1:N:51:TRP:HA	2.57	0.40
2:O:133:THR:CG2	2:O:147:ALA:HA	2.52	0.40
2:O:202:HIS:CE1	2:O:206:ILE:HD11	2.57	0.40
2:O:258:PHE:HE1	6:O:311:U10:H211	1.86	0.40
1:N:238:LEU:HD12	5:N:285:BPH:CBC	2.51	0.40
2:O:195:ASN:HB3	2:O:198:TYR:HD2	1.86	0.40
4:N:284:BCL:H18	4:N:284:BCL:H141	2.03	0.40
1:L:101:ALA:O	1:L:104:GLU:HB2	2.20	0.40
1:L:223:SER:O	2:M:44:ASN:HB2	2.22	0.40
4:L:282:BCL:CGA	4:L:283:BCL:HBC1	2.51	0.40

There are no symmetry-related clashes.

## 5.3 Torsion angles

### 5.3.1 Protein backbone

In the following table, the Percentiles column shows the percent Ramachandran outliers of the chain as a percentile score with respect to all X-ray entries followed by that with respect to entries of similar resolution.

The Analysed column shows the number of residues for which the backbone conformation was analysed, and the total number of residues.

Mol	Chain	Analysed	Favoured	Allowed	Outliers	Percentiles	
1	L	279/281 (99%)	261 (94%)	14 (5%)	4 (1%)	11	22
1	N	279/281 (99%)	261 (94%)	15 (5%)	3 (1%)	14	30
2	M	297/307 (97%)	284 (96%)	11 (4%)	2 (1%)	22	43
2	O	297/307 (97%)	284 (96%)	11 (4%)	2 (1%)	22	43
3	H	246/260 (95%)	238 (97%)	8 (3%)	0	100	100
3	P	246/260 (95%)	238 (97%)	7 (3%)	1 (0%)	34	57
All	All	1644/1696 (97%)	1566 (95%)	66 (4%)	12 (1%)	22	43

All (12) Ramachandran outliers are listed below:

Mol	Chain	Res	Type
1	L	270	PRO
2	M	259	ASN
2	O	259	ASN
1	L	271	TRP
2	M	195	ASN
1	N	271	TRP
2	O	195	ASN
1	N	270	PRO
1	L	66	VAL
3	P	138	ALA
1	N	66	VAL
1	L	31	VAL

### 5.3.2 Protein sidechains [i](#)

In the following table, the Percentiles column shows the percent sidechain outliers of the chain as a percentile score with respect to all X-ray entries followed by that with respect to entries of similar resolution.

The Analysed column shows the number of residues for which the sidechain conformation was analysed, and the total number of residues.

Mol	Chain	Analysed	Rotameric	Outliers	Percentiles	
1	L	220/220 (100%)	208 (94%)	12 (6%)	21	43
1	N	220/220 (100%)	201 (91%)	19 (9%)	10	20
2	M	235/240 (98%)	218 (93%)	17 (7%)	14	29

*Continued on next page...*

*Continued from previous page...*

Mol	Chain	Analysed	Rotameric	Outliers	Percentiles	
2	O	235/240 (98%)	220 (94%)	15 (6%)	17	35
3	H	200/209 (96%)	179 (90%)	21 (10%)	7	13
3	P	200/209 (96%)	178 (89%)	22 (11%)	6	11
All	All	1310/1338 (98%)	1204 (92%)	106 (8%)	11	23

All (106) residues with a non-rotameric sidechain are listed below:

Mol	Chain	Res	Type
1	L	38	THR
1	L	59	TRP
1	L	64	ILE
1	L	102	LEU
1	L	129	LEU
1	L	132	VAL
1	L	136	PRO
1	L	189	LEU
1	L	195	LEU
1	L	216	PHE
1	L	234	LEU
1	L	272	TRP
2	M	12	VAL
2	M	22	GLU
2	M	29	ARG
2	M	37	THR
2	M	60	LEU
2	M	89	LEU
2	M	94	LEU
2	M	114	LEU
2	M	156	LEU
2	M	182	HIS
2	M	216	PHE
2	M	259	ASN
2	M	261	THR
2	M	279	THR
2	M	286	LEU
2	M	292	ASP
2	M	300	ASN
3	H	49	PRO
3	H	60	LYS
3	H	73	LEU
3	H	75	VAL

*Continued on next page...*

*Continued from previous page...*

<b>Mol</b>	<b>Chain</b>	<b>Res</b>	<b>Type</b>
3	H	82	ASP
3	H	83	ARG
3	H	84	PRO
3	H	109	VAL
3	H	123	LEU
3	H	124	ASP
3	H	188	THR
3	H	208	LEU
3	H	212	LEU
3	H	220	LYS
3	H	221	SER
3	H	223	THR
3	H	225	VAL
3	H	226	THR
3	H	227	LEU
3	H	231	ASP
3	H	255	MET
1	N	11	VAL
1	N	49	ILE
1	N	59	TRP
1	N	64	ILE
1	N	102	LEU
1	N	126	LEU
1	N	129	LEU
1	N	132	VAL
1	N	158	SER
1	N	189	LEU
1	N	195	LEU
1	N	207	ARG
1	N	210	ASP
1	N	216	PHE
1	N	234	LEU
1	N	235	LEU
1	N	247	CYS
1	N	254	ILE
1	N	272	TRP
2	O	22	GLU
2	O	29	ARG
2	O	37	THR
2	O	60	LEU
2	O	89	LEU
2	O	94	LEU

*Continued on next page...*

*Continued from previous page...*

Mol	Chain	Res	Type
2	O	133	THR
2	O	148	TRP
2	O	152	SER
2	O	156	LEU
2	O	168	MET
2	O	191	LEU
2	O	216	PHE
2	O	286	LEU
2	O	301	HIS
3	P	11	ASP
3	P	12	LEU
3	P	17	ILE
3	P	46	ASP
3	P	60	LYS
3	P	61	PRO
3	P	66	LEU
3	P	73	LEU
3	P	75	VAL
3	P	82	ASP
3	P	109	VAL
3	P	188	THR
3	P	203	VAL
3	P	208	LEU
3	P	212	LEU
3	P	219	ILE
3	P	220	LYS
3	P	223	THR
3	P	225	VAL
3	P	227	LEU
3	P	231	ASP
3	P	251	VAL

Sometimes sidechains can be flipped to improve hydrogen bonding and reduce clashes. All (19) such sidechains are listed below:

Mol	Chain	Res	Type
1	L	56	GLN
1	L	87	GLN
1	L	199	ASN
1	L	211	HIS
2	M	9	GLN
2	M	145	HIS
2	M	193	HIS

*Continued on next page...*

*Continued from previous page...*

Mol	Chain	Res	Type
3	H	204	HIS
1	N	87	GLN
1	N	159	ASN
1	N	183	ASN
1	N	199	ASN
1	N	211	HIS
2	O	9	GLN
2	O	11	GLN
2	O	145	HIS
2	O	193	HIS
3	P	199	GLN
3	P	204	HIS

### 5.3.3 RNA [i](#)

There are no RNA molecules in this entry.

### 5.4 Non-standard residues in protein, DNA, RNA chains [i](#)

There are no non-standard protein/DNA/RNA residues in this entry.

### 5.5 Carbohydrates [i](#)

There are no monosaccharides in this entry.

### 5.6 Ligand geometry [i](#)

Of 18 ligands modelled in this entry, 2 are monoatomic - leaving 16 for Mogul analysis.

In the following table, the Counts columns list the number of bonds (or angles) for which Mogul statistics could be retrieved, the number of bonds (or angles) that are observed in the model and the number of bonds (or angles) that are defined in the Chemical Component Dictionary. The Link column lists molecule types, if any, to which the group is linked. The Z score for a bond length (or angle) is the number of standard deviations the observed value is removed from the expected value. A bond length (or angle) with  $|Z| > 2$  is considered an outlier worth inspection. RMSZ is the root-mean-square of all Z scores of the bond lengths (or angles).

Mol	Type	Chain	Res	Link	Bond lengths			Bond angles		
					Counts	RMSZ	$\# Z  > 2$	Counts	RMSZ	$\# Z  > 2$
4	BCL	N	284	1	64,74,74	1.24	9 (14%)	78,115,115	2.20	26 (33%)

Mol	Type	Chain	Res	Link	Bond lengths			Bond angles		
					Counts	RMSZ	# Z  > 2	Counts	RMSZ	# Z  > 2
4	BCL	M	309	2	64,74,74	1.29	9 (14%)	78,115,115	2.27	26 (33%)
5	BPH	N	285	-	51,70,70	1.20	4 (7%)	52,101,101	2.19	14 (26%)
4	BCL	O	309	2,4	64,74,74	1.21	8 (12%)	78,115,115	1.78	18 (23%)
6	U10	M	311	-	63,63,63	1.73	15 (23%)	76,79,79	1.31	6 (7%)
4	BCL	N	283	1,4	64,74,74	1.20	7 (10%)	78,115,115	2.07	25 (32%)
6	U10	O	311	-	63,63,63	1.58	14 (22%)	76,79,79	1.19	10 (13%)
5	BPH	L	284	-	51,70,70	1.60	5 (9%)	52,101,101	1.94	14 (26%)
4	BCL	M	310	2	64,74,74	1.16	7 (10%)	78,115,115	2.08	22 (28%)
6	U10	N	286	-	63,63,63	1.70	14 (22%)	76,79,79	1.52	9 (11%)
4	BCL	L	282	1	64,74,74	1.25	9 (14%)	78,115,115	1.81	21 (26%)
4	BCL	N	282	2	64,74,74	1.41	11 (17%)	78,115,115	1.93	21 (26%)
4	BCL	L	283	1	64,74,74	1.24	9 (14%)	78,115,115	2.11	24 (30%)
5	BPH	L	285	-	51,70,70	1.50	5 (9%)	52,101,101	1.85	13 (25%)
6	U10	L	286	-	63,63,63	1.73	14 (22%)	76,79,79	1.34	8 (10%)
5	BPH	O	310	-	51,70,70	1.18	5 (9%)	52,101,101	2.09	12 (23%)

In the following table, the Chirals column lists the number of chiral outliers, the number of chiral centers analysed, the number of these observed in the model and the number defined in the Chemical Component Dictionary. Similar counts are reported in the Torsion and Rings columns. '2' means no outliers of that kind were identified.

Mol	Type	Chain	Res	Link	Chirals	Torsions	Rings
4	BCL	N	284	1	-	5/37/137/137	-
4	BCL	M	309	2	2/2/21/25	12/37/137/137	-
5	BPH	N	285	-	1/1/18/22	10/37/105/105	0/5/6/6
4	BCL	O	309	2,4	1/1/21/25	5/37/137/137	-
6	U10	M	311	-	-	16/63/87/87	0/1/1/1
4	BCL	N	283	1,4	-	12/37/137/137	-
6	U10	O	311	-	-	14/63/87/87	0/1/1/1
5	BPH	L	284	-	2/2/18/22	10/37/105/105	0/5/6/6
4	BCL	M	310	2	2/2/21/25	5/37/137/137	-
6	U10	N	286	-	-	20/63/87/87	0/1/1/1
4	BCL	L	282	1	-	3/37/137/137	-
4	BCL	N	282	2	2/2/21/25	6/37/137/137	-
4	BCL	L	283	1	-	6/37/137/137	-
5	BPH	L	285	-	1/1/18/22	11/37/105/105	0/5/6/6

Continued on next page...

*Continued from previous page...*

Mol	Type	Chain	Res	Link	Chirals	Torsions	Rings
6	U10	L	286	-	-	13/63/87/87	0/1/1/1
5	BPH	O	310	-	1/1/18/22	11/37/105/105	0/5/6/6

All (145) bond length outliers are listed below:

Mol	Chain	Res	Type	Atoms	Z	Observed(Å)	Ideal(Å)
5	L	285	BPH	C3A-C2A	-7.46	1.47	1.54
5	L	284	BPH	C2C-C3C	-6.54	1.48	1.54
5	L	284	BPH	C3A-C2A	-5.45	1.49	1.54
6	L	286	U10	C7-C8	-5.03	1.43	1.50
6	M	311	U10	C7-C8	-4.86	1.43	1.50
6	N	286	U10	C7-C8	-4.43	1.44	1.50
4	L	282	BCL	O2D-CGD	-4.35	1.22	1.33
5	N	285	BPH	C3A-C2A	-4.31	1.50	1.54
4	O	309	BCL	O2D-CGD	-4.01	1.23	1.33
4	L	283	BCL	O2D-CGD	-3.91	1.23	1.33
6	O	311	U10	C6-C1	3.90	1.42	1.35
5	O	310	BPH	C2C-C3C	-3.89	1.51	1.54
4	L	282	BCL	C1D-C2D	-3.80	1.37	1.45
5	L	285	BPH	C2C-C3C	-3.79	1.51	1.54
6	N	286	U10	C6-C1	3.69	1.41	1.35
4	N	282	BCL	O2D-CGD	-3.68	1.24	1.33
4	N	282	BCL	C1D-C2D	-3.67	1.38	1.45
5	L	284	BPH	O2D-CGD	-3.57	1.24	1.33
4	N	283	BCL	O2D-CGD	-3.55	1.24	1.33
5	N	285	BPH	C2C-C3C	-3.51	1.51	1.54
6	N	286	U10	C32-C33	-3.51	1.39	1.50
4	M	309	BCL	C1D-ND	-3.47	1.33	1.37
4	M	309	BCL	C1D-C2D	-3.47	1.38	1.45
4	N	284	BCL	O2D-CGD	-3.45	1.24	1.33
6	L	286	U10	C23-C24	3.44	1.41	1.33
4	O	309	BCL	C3B-CAB	-3.41	1.40	1.49
4	N	282	BCL	C4B-NB	3.39	1.38	1.35
6	O	311	U10	C28-C29	3.38	1.41	1.33
4	M	309	BCL	O2D-CGD	-3.37	1.25	1.33
5	L	284	BPH	O2A-CGA	-3.37	1.23	1.33
6	L	286	U10	C28-C29	3.36	1.41	1.33
6	M	311	U10	C38-C39	3.36	1.41	1.33
5	N	285	BPH	O2D-CGD	-3.32	1.25	1.33
6	M	311	U10	C43-C44	3.32	1.41	1.33
6	L	286	U10	C3-C2	-3.28	1.39	1.48
4	N	282	BCL	CAA-C2A	3.28	1.60	1.54

*Continued on next page...*



*Continued from previous page...*

Mol	Chain	Res	Type	Atoms	Z	Observed(Å)	Ideal(Å)
4	N	282	BCL	C2-C3	3.27	1.40	1.33
6	L	286	U10	C48-C49	3.27	1.40	1.33
5	O	310	BPH	O2A-CGA	-3.26	1.23	1.33
4	N	283	BCL	CAA-C2A	-3.26	1.48	1.54
6	M	311	U10	C6-C1	3.26	1.41	1.35
4	N	284	BCL	C1D-C2D	-3.24	1.38	1.45
4	M	310	BCL	O2D-CGD	-3.21	1.25	1.33
5	L	285	BPH	O2D-CGD	-3.21	1.25	1.33
4	N	283	BCL	O2A-CGA	-3.20	1.23	1.33
4	M	310	BCL	C1D-C2D	-3.20	1.39	1.45
6	M	311	U10	C48-C49	3.18	1.40	1.33
6	N	286	U10	C28-C29	3.17	1.40	1.33
4	L	283	BCL	C1D-C2D	-3.12	1.39	1.45
5	O	310	BPH	C3A-C2A	-3.12	1.51	1.54
5	L	285	BPH	O2A-CGA	-3.10	1.24	1.33
5	O	310	BPH	O2D-CGD	-3.09	1.25	1.33
6	N	286	U10	C18-C19	3.07	1.40	1.33
6	N	286	U10	C4-C5	-3.04	1.40	1.48
4	M	309	BCL	O2A-CGA	-3.04	1.24	1.33
4	L	282	BCL	C3B-CAB	-3.02	1.41	1.49
6	O	311	U10	C3-C2	-3.01	1.40	1.48
4	N	282	BCL	O2A-CGA	-2.99	1.24	1.33
5	N	285	BPH	O2A-CGA	-2.96	1.24	1.33
6	L	286	U10	C38-C39	2.96	1.40	1.33
6	M	311	U10	C33-C34	2.95	1.40	1.33
4	O	309	BCL	O2A-CGA	-2.95	1.24	1.33
4	M	310	BCL	C4D-ND	-2.94	1.33	1.37
4	O	309	BCL	C1D-C2D	-2.94	1.39	1.45
6	O	311	U10	C4-C5	-2.91	1.40	1.48
6	L	286	U10	C33-C34	2.91	1.40	1.33
4	L	282	BCL	O2A-CGA	-2.90	1.24	1.33
6	O	311	U10	C8-C9	2.86	1.39	1.33
4	M	310	BCL	O2A-CGA	-2.86	1.25	1.33
6	M	311	U10	C18-C19	2.85	1.39	1.33
6	M	311	U10	C3-C2	-2.83	1.40	1.48
6	N	286	U10	C38-C39	2.83	1.39	1.33
6	N	286	U10	C23-C24	2.82	1.39	1.33
4	M	309	BCL	C4D-ND	-2.82	1.33	1.37
6	N	286	U10	C3-C2	-2.81	1.40	1.48
4	N	283	BCL	C1D-C2D	-2.81	1.39	1.45
6	O	311	U10	C23-C24	2.77	1.39	1.33
6	N	286	U10	C13-C14	2.76	1.39	1.33

*Continued on next page...*

*Continued from previous page...*

Mol	Chain	Res	Type	Atoms	Z	Observed(Å)	Ideal(Å)
6	L	286	U10	C4-C5	-2.76	1.40	1.48
6	L	286	U10	C6-C1	2.75	1.40	1.35
6	O	311	U10	C7-C6	2.74	1.55	1.51
6	O	311	U10	C43-C44	2.74	1.39	1.33
6	M	311	U10	C13-C14	2.72	1.39	1.33
6	N	286	U10	C43-C44	2.71	1.39	1.33
6	M	311	U10	C4-C5	-2.69	1.41	1.48
4	L	283	BCL	O2A-CGA	-2.69	1.25	1.33
6	M	311	U10	C53-C54	2.68	1.40	1.32
6	L	286	U10	C18-C19	2.68	1.39	1.33
6	L	286	U10	C43-C44	2.68	1.39	1.33
4	L	283	BCL	C3B-CAB	-2.67	1.42	1.49
6	O	311	U10	C38-C39	2.65	1.39	1.33
6	O	311	U10	C18-C19	2.60	1.39	1.33
6	N	286	U10	C48-C49	2.56	1.39	1.33
6	M	311	U10	C23-C24	2.56	1.39	1.33
4	L	282	BCL	C1D-ND	-2.55	1.34	1.37
6	O	311	U10	C33-C34	2.55	1.39	1.33
4	N	284	BCL	CAA-CBA	2.55	1.60	1.52
4	N	283	BCL	C4B-NB	2.55	1.37	1.35
4	O	309	BCL	C2-C3	2.55	1.39	1.33
4	L	282	BCL	C2-C3	2.54	1.39	1.33
6	O	311	U10	C48-C49	2.52	1.39	1.33
4	M	310	BCL	C3B-CAB	-2.51	1.42	1.49
4	O	309	BCL	C4B-NB	2.50	1.37	1.35
4	N	283	BCL	C2-C3	2.50	1.39	1.33
4	M	310	BCL	C2-C3	2.48	1.38	1.33
4	M	309	BCL	C3D-CAD	-2.47	1.36	1.45
4	L	283	BCL	C4B-NB	2.46	1.37	1.35
4	N	284	BCL	O2A-CGA	-2.45	1.26	1.33
6	M	311	U10	C28-C29	2.44	1.38	1.33
4	N	284	BCL	C3B-CAB	-2.43	1.42	1.49
5	O	310	BPH	C2-C3	2.43	1.38	1.33
4	N	284	BCL	C2-C3	2.42	1.38	1.33
5	L	284	BPH	C2-C3	2.41	1.38	1.33
4	L	283	BCL	C2-C3	2.40	1.38	1.33
4	N	282	BCL	C1B-NB	2.39	1.37	1.35
4	M	309	BCL	C3B-CAB	-2.39	1.42	1.49
4	N	284	BCL	C1D-ND	-2.38	1.34	1.37
6	O	311	U10	C53-C54	2.38	1.39	1.32
4	L	282	BCL	C4B-NB	2.37	1.37	1.35
6	L	286	U10	C6-C5	-2.36	1.40	1.46

*Continued on next page...*

*Continued from previous page...*

Mol	Chain	Res	Type	Atoms	Z	Observed(Å)	Ideal(Å)
6	N	286	U10	C53-C54	2.32	1.39	1.32
4	M	309	BCL	C2-C3	2.31	1.38	1.33
6	L	286	U10	C53-C54	2.30	1.39	1.32
4	L	283	BCL	C3D-CAD	-2.30	1.37	1.45
6	O	311	U10	C13-C14	2.28	1.38	1.33
4	O	309	BCL	C4D-ND	-2.25	1.34	1.37
4	N	282	BCL	C3A-C2A	-2.23	1.48	1.54
5	L	285	BPH	CBD-CGD	2.21	1.55	1.52
4	L	283	BCL	C1D-ND	-2.21	1.35	1.37
4	N	282	BCL	CAA-CBA	2.19	1.59	1.52
4	N	283	BCL	C3B-CAB	-2.19	1.43	1.49
4	M	309	BCL	C3D-C4D	-2.17	1.39	1.44
4	L	282	BCL	CAA-C2A	-2.16	1.50	1.54
4	L	283	BCL	C4D-ND	-2.15	1.34	1.37
4	L	282	BCL	C2C-C3C	-2.15	1.48	1.54
6	L	286	U10	C13-C14	2.14	1.38	1.33
4	N	284	BCL	MG-NC	-2.14	2.01	2.06
4	N	282	BCL	C3B-CAB	-2.13	1.43	1.49
4	M	310	BCL	C3D-CAD	-2.12	1.38	1.45
4	N	284	BCL	CMC-C2C	-2.09	1.48	1.53
4	O	309	BCL	C1D-ND	-2.09	1.35	1.37
4	N	282	BCL	C2C-C3C	-2.07	1.48	1.54
6	M	311	U10	C7-C6	2.04	1.54	1.51
6	M	311	U10	C8-C9	2.01	1.37	1.33
6	N	286	U10	C33-C34	2.01	1.37	1.33

All (269) bond angle outliers are listed below:

Mol	Chain	Res	Type	Atoms	Z	Observed(°)	Ideal(°)
5	N	285	BPH	O2D-CGD-CBD	8.45	121.70	111.00
5	O	310	BPH	O2D-CGD-CBD	8.25	121.44	111.00
4	M	309	BCL	C1C-NC-C4C	8.06	110.33	106.71
4	N	284	BCL	C1C-NC-C4C	7.38	110.02	106.71
4	L	283	BCL	C1C-NC-C4C	6.74	109.73	106.71
5	L	284	BPH	O2D-CGD-CBD	6.35	119.04	111.00
5	O	310	BPH	O1D-CGD-CBD	-6.35	114.17	124.74
4	M	310	BCL	C1C-NC-C4C	6.10	109.45	106.71
4	N	283	BCL	C1C-NC-C4C	5.91	109.36	106.71
4	M	310	BCL	C4A-NA-C1A	5.67	109.26	106.71
4	N	282	BCL	CBA-CAA-C2A	5.66	130.57	113.86
4	N	284	BCL	C4A-NA-C1A	5.32	109.10	106.71
5	L	285	BPH	O2D-CGD-CBD	5.30	117.72	111.00

*Continued on next page...*

*Continued from previous page...*

Mol	Chain	Res	Type	Atoms	Z	Observed(°)	Ideal(°)
5	N	285	BPH	O1D-CGD-CBD	-5.30	115.92	124.74
4	N	284	BCL	C1D-ND-C4D	-5.15	102.68	106.33
5	L	285	BPH	C3D-CAD-CBD	5.06	114.26	107.61
4	L	283	BCL	C1D-ND-C4D	-5.03	102.76	106.33
4	O	309	BCL	C1C-NC-C4C	5.00	108.95	106.71
6	N	286	U10	C35-C34-C36	4.95	123.61	115.27
4	L	283	BCL	CMB-C2B-C1B	-4.89	120.95	128.46
4	M	310	BCL	CMB-C2B-C1B	-4.86	120.99	128.46
4	M	309	BCL	C1-C2-C3	-4.84	117.68	126.04
4	N	283	BCL	C1D-ND-C4D	-4.80	102.93	106.33
6	N	286	U10	C7-C6-C5	4.74	124.18	118.48
4	L	283	BCL	C4D-C3D-CAD	-4.69	102.56	108.10
4	L	283	BCL	CMB-C2B-C3B	4.63	133.34	124.68
4	M	309	BCL	CMB-C2B-C1B	-4.52	121.51	128.46
4	M	310	BCL	C4D-CHA-C1A	4.52	126.74	121.25
4	M	310	BCL	CMB-C2B-C3B	4.50	133.09	124.68
5	L	284	BPH	C3D-CAD-CBD	4.47	113.49	107.61
4	M	309	BCL	C4D-CHA-C1A	4.44	126.65	121.25
5	N	285	BPH	C7-C6-C5	-4.43	101.34	113.36
4	M	309	BCL	C1D-ND-C4D	-4.40	103.21	106.33
6	N	286	U10	C7-C8-C9	-4.39	119.48	126.79
4	M	309	BCL	C4A-NA-C1A	4.38	108.68	106.71
4	O	309	BCL	C4D-CHA-C1A	4.30	126.48	121.25
4	M	309	BCL	O2D-CGD-CBD	4.27	118.86	111.27
4	N	282	BCL	C4D-CHA-C1A	4.26	126.43	121.25
4	N	283	BCL	C4A-NA-C1A	4.22	108.60	106.71
4	L	282	BCL	CMB-C2B-C1B	-4.21	121.99	128.46
4	N	284	BCL	C4D-CHA-C1A	4.16	126.31	121.25
4	L	282	BCL	C1D-ND-C4D	-4.13	103.40	106.33
4	L	283	BCL	C4D-CHA-C1A	4.13	126.28	121.25
4	L	283	BCL	C3D-C4D-ND	4.12	116.90	110.24
5	L	284	BPH	O1D-CGD-CBD	-4.10	117.92	124.74
4	N	282	BCL	O2D-CGD-CBD	4.08	118.52	111.27
4	M	309	BCL	CMB-C2B-C3B	4.07	132.29	124.68
4	M	310	BCL	C1D-ND-C4D	-4.06	103.45	106.33
4	N	282	BCL	C3D-C2D-C1D	4.06	111.37	105.83
4	N	282	BCL	C4A-NA-C1A	4.06	108.53	106.71
4	N	282	BCL	C4D-C3D-CAD	-3.99	103.39	108.10
4	M	309	BCL	C3D-C4D-ND	3.97	116.66	110.24
5	N	285	BPH	C3D-CAD-CBD	3.94	112.79	107.61
4	N	284	BCL	CMB-C2B-C1B	-3.90	122.48	128.46
4	L	282	BCL	C4D-CHA-C1A	3.89	125.98	121.25

*Continued on next page...*

*Continued from previous page...*

Mol	Chain	Res	Type	Atoms	Z	Observed(°)	Ideal(°)
4	N	283	BCL	C4D-CHA-C1A	3.86	125.95	121.25
4	N	283	BCL	C3D-C4D-ND	3.83	116.44	110.24
4	O	309	BCL	O2D-CGD-CBD	3.83	118.08	111.27
4	N	284	BCL	C3D-C4D-ND	3.83	116.43	110.24
4	M	310	BCL	C4D-C3D-CAD	-3.81	103.60	108.10
5	L	284	BPH	CMB-C2B-C3B	3.81	131.81	124.68
4	O	309	BCL	C4D-C3D-CAD	-3.80	103.61	108.10
5	O	310	BPH	C3D-CAD-CBD	3.80	112.61	107.61
4	N	282	BCL	C1C-NC-C4C	3.77	108.40	106.71
5	L	284	BPH	O2A-C1-C2	-3.77	98.72	108.64
5	L	284	BPH	C4-C3-C5	3.77	121.61	115.27
4	M	310	BCL	O2D-CGD-CBD	3.76	117.95	111.27
4	L	282	BCL	C1C-NC-C4C	3.75	108.39	106.71
4	N	282	BCL	C3D-C4D-ND	3.74	116.28	110.24
4	M	309	BCL	C4D-C3D-CAD	-3.73	103.70	108.10
4	N	283	BCL	C4D-C3D-CAD	-3.73	103.70	108.10
4	N	284	BCL	CMB-C2B-C3B	3.72	131.63	124.68
4	L	282	BCL	C4D-C3D-CAD	-3.71	103.72	108.10
4	L	282	BCL	CMB-C2B-C3B	3.70	131.59	124.68
4	M	309	BCL	O1D-CGD-CBD	-3.66	117.00	124.48
6	N	286	U10	C8-C7-C6	3.65	121.89	112.05
5	L	285	BPH	O1D-CGD-CBD	-3.64	118.67	124.74
4	N	283	BCL	CMB-C2B-C1B	-3.63	122.89	128.46
4	N	284	BCL	C4D-C3D-CAD	-3.61	103.84	108.10
4	M	310	BCL	C1-O2A-CGA	3.58	125.83	116.44
4	M	310	BCL	C3D-C4D-ND	3.58	116.03	110.24
4	L	282	BCL	C3D-C4D-ND	3.58	116.02	110.24
4	N	282	BCL	CAD-C3D-C2D	3.53	157.81	140.80
4	N	284	BCL	CED-O2D-CGD	3.50	123.84	115.94
6	L	286	U10	C7-C8-C9	-3.48	121.00	126.79
4	N	283	BCL	C4-C3-C5	3.46	121.10	115.27
4	N	284	BCL	CAA-CBA-CGA	3.46	123.37	113.25
5	L	284	BPH	C1-O2A-CGA	3.46	125.52	116.44
4	L	283	BCL	CAD-C3D-C2D	3.46	157.48	140.80
4	O	309	BCL	C1-O2A-CGA	3.42	125.40	116.44
4	M	309	BCL	C11-C12-C13	3.40	126.90	115.92
5	O	310	BPH	CMA-C3A-C4A	-3.39	106.95	114.38
4	L	282	BCL	CAD-C3D-C2D	3.38	157.13	140.80
4	N	283	BCL	CMB-C2B-C3B	3.35	130.94	124.68
4	L	283	BCL	CAA-CBA-CGA	3.35	123.03	113.25
4	L	282	BCL	C3D-C2D-C1D	3.35	110.40	105.83
4	N	284	BCL	CHD-C1D-ND	-3.34	121.39	124.45

*Continued on next page...*

*Continued from previous page...*

Mol	Chain	Res	Type	Atoms	Z	Observed(°)	Ideal(°)
5	L	285	BPH	C4-C3-C5	3.32	120.86	115.27
4	M	309	BCL	CAD-C3D-C2D	3.26	156.53	140.80
5	L	285	BPH	CED-O2D-CGD	3.26	123.30	115.94
5	N	285	BPH	C4-C3-C5	3.25	120.74	115.27
4	L	283	BCL	C4A-NA-C1A	3.25	108.17	106.71
5	O	310	BPH	C1-O2A-CGA	3.24	124.94	116.44
6	N	286	U10	C36-C34-C33	-3.23	114.57	121.12
4	O	309	BCL	C3D-C4D-ND	3.23	115.47	110.24
4	M	309	BCL	CBA-CAA-C2A	3.22	123.38	113.86
4	N	284	BCL	CAD-C3D-C2D	3.22	156.31	140.80
6	L	286	U10	C50-C49-C51	3.21	120.68	115.27
5	N	285	BPH	CMA-C3A-C4A	-3.19	107.39	114.38
6	M	311	U10	C30-C29-C31	3.18	120.62	115.27
4	N	283	BCL	CAD-C3D-C2D	3.18	156.12	140.80
4	O	309	BCL	C1D-ND-C4D	-3.17	104.08	106.33
5	N	285	BPH	C17-C16-C15	-3.16	98.73	113.24
4	N	283	BCL	O2A-C1-C2	3.12	116.83	108.64
4	M	310	BCL	CAD-C3D-C2D	3.10	155.74	140.80
4	O	309	BCL	C4A-NA-C1A	3.09	108.09	106.71
4	O	309	BCL	CAD-C3D-C2D	3.07	155.62	140.80
4	M	309	BCL	O2A-C1-C2	3.05	116.65	108.64
4	N	284	BCL	C3D-C2D-C1D	3.04	109.97	105.83
5	L	285	BPH	CAC-C3C-C2C	-2.99	106.79	114.26
5	N	285	BPH	CMB-C2B-C3B	2.99	130.27	124.68
5	L	284	BPH	C4A-C3A-C2A	2.99	105.68	102.84
4	L	283	BCL	CHA-C4D-ND	-2.98	126.27	132.50
4	M	309	BCL	C3D-C2D-C1D	2.98	109.89	105.83
4	N	283	BCL	O2D-CGD-CBD	2.97	116.54	111.27
6	O	311	U10	C40-C39-C41	2.96	120.25	115.27
5	O	310	BPH	C4-C3-C5	2.96	120.24	115.27
4	N	283	BCL	C1-C2-C3	-2.96	120.93	126.04
4	N	282	BCL	CAC-C3C-C2C	-2.95	106.88	114.26
6	M	311	U10	C1M-C1-C6	-2.94	119.61	124.40
4	L	282	BCL	CAC-C3C-C4C	-2.93	106.08	112.58
6	L	286	U10	C20-C19-C21	2.92	120.18	115.27
4	N	283	BCL	CBA-CAA-C2A	-2.91	105.26	113.86
5	L	285	BPH	C6-C5-C3	-2.90	105.85	113.45
4	N	284	BCL	CAA-C2A-C3A	-2.90	104.84	112.78
4	N	283	BCL	CHD-C1D-ND	-2.88	121.80	124.45
4	N	282	BCL	CMB-C2B-C1B	-2.87	124.06	128.46
6	M	311	U10	C10-C9-C11	2.87	120.09	115.27
4	N	283	BCL	CBC-CAC-C3C	2.86	119.83	113.47

*Continued on next page...*

*Continued from previous page...*

Mol	Chain	Res	Type	Atoms	Z	Observed(°)	Ideal(°)
5	N	285	BPH	CMC-C2C-C1C	-2.84	108.16	114.38
4	M	309	BCL	CHA-C4D-ND	-2.83	126.57	132.50
4	N	284	BCL	CHA-C4D-ND	-2.83	126.58	132.50
4	L	283	BCL	C6-C5-C3	-2.82	106.06	113.45
4	N	282	BCL	O1D-CGD-CBD	-2.81	118.73	124.48
5	O	310	BPH	CMB-C2B-C3B	2.80	129.92	124.68
4	L	283	BCL	C3D-C2D-C1D	2.79	109.64	105.83
5	L	284	BPH	C1C-C2C-C3C	2.78	105.49	102.84
4	N	284	BCL	OBD-CAD-C3D	-2.78	121.83	128.52
4	L	283	BCL	CHD-C1D-ND	-2.78	121.90	124.45
6	M	311	U10	C50-C49-C51	2.76	119.91	115.27
4	O	309	BCL	CMB-C2B-C3B	2.76	129.84	124.68
4	N	283	BCL	CHA-C4D-ND	-2.76	126.73	132.50
4	M	310	BCL	CED-O2D-CGD	2.75	122.16	115.94
4	L	283	BCL	C4-C3-C5	2.74	119.88	115.27
4	M	310	BCL	O1D-CGD-CBD	-2.73	118.90	124.48
6	L	286	U10	C40-C39-C41	2.72	119.84	115.27
6	O	311	U10	C35-C34-C36	2.70	119.82	115.27
4	N	282	BCL	C1D-ND-C4D	-2.70	104.42	106.33
6	L	286	U10	C45-C44-C46	2.70	119.81	115.27
4	N	282	BCL	CHA-C4D-ND	-2.69	126.87	132.50
4	O	309	BCL	CED-O2D-CGD	2.68	122.01	115.94
4	N	282	BCL	O2A-CGA-CBA	2.68	120.32	111.91
5	L	284	BPH	CMC-C2C-C1C	-2.68	108.51	114.38
4	M	310	BCL	CAC-C3C-C4C	-2.68	106.64	112.58
4	N	282	BCL	CAA-CBA-CGA	2.67	121.05	113.25
4	N	283	BCL	C3D-C2D-C1D	2.65	109.45	105.83
4	L	282	BCL	CED-O2D-CGD	2.64	121.92	115.94
5	L	285	BPH	C1-C2-C3	-2.61	121.53	126.04
4	O	309	BCL	C3D-C2D-C1D	2.60	109.38	105.83
4	M	310	BCL	CHA-C4D-ND	-2.60	127.06	132.50
4	M	309	BCL	CAC-C3C-C4C	-2.57	106.88	112.58
5	O	310	BPH	C11-C10-C8	2.57	124.22	115.92
6	L	286	U10	C56-C54-C55	2.54	120.21	114.60
4	N	283	BCL	O2A-CGA-CBA	2.52	119.80	111.91
4	N	283	BCL	C3A-C2A-C1A	2.51	105.10	101.34
4	M	309	BCL	O2A-CGA-CBA	2.50	119.75	111.91
6	M	311	U10	C4M-O4-C4	2.49	125.29	116.47
4	N	284	BCL	CHB-C4A-NA	2.48	127.94	124.51
5	O	310	BPH	CMC-C2C-C1C	-2.47	108.96	114.38
4	N	284	BCL	C1-C2-C3	-2.47	121.77	126.04
5	N	285	BPH	O2A-C1-C2	-2.47	102.15	108.64

*Continued on next page...*

*Continued from previous page...*

Mol	Chain	Res	Type	Atoms	Z	Observed(°)	Ideal(°)
6	M	311	U10	C35-C34-C36	2.45	119.40	115.27
4	N	284	BCL	C16-C17-C18	2.45	127.52	115.98
4	M	310	BCL	C3D-C2D-C1D	2.41	109.11	105.83
4	L	282	BCL	CHA-C1A-NA	-2.40	120.90	126.40
4	L	282	BCL	CHA-C4D-ND	-2.39	127.50	132.50
4	L	282	BCL	C7-C6-C5	-2.38	106.89	113.36
4	N	282	BCL	CMB-C2B-C3B	2.38	129.13	124.68
6	N	286	U10	C31-C32-C33	-2.37	104.08	111.88
4	L	282	BCL	C4-C3-C5	2.37	119.25	115.27
4	L	282	BCL	CBC-CAC-C3C	2.36	118.72	113.47
5	L	285	BPH	C17-C16-C15	2.35	124.02	113.24
5	O	310	BPH	C11-C12-C13	2.34	123.49	115.92
5	N	285	BPH	C1-O2A-CGA	2.34	122.59	116.44
6	N	286	U10	C40-C39-C41	2.34	119.20	115.27
4	N	284	BCL	C4-C3-C5	2.33	119.19	115.27
4	L	282	BCL	CHD-C1D-ND	-2.30	122.34	124.45
5	O	310	BPH	CED-O2D-CGD	2.29	121.11	115.94
4	N	283	BCL	OBB-CAB-CBB	-2.28	115.03	120.17
4	L	283	BCL	O2A-C1-C2	-2.28	102.64	108.64
4	M	310	BCL	CMC-C2C-C1C	-2.28	105.64	111.77
4	L	283	BCL	O2D-CGD-CBD	2.28	115.31	111.27
6	N	286	U10	C17-C16-C14	2.27	120.46	112.98
5	L	285	BPH	CMB-C2B-C3B	2.27	128.93	124.68
4	N	283	BCL	C2A-C1A-CHA	2.27	127.82	123.86
4	O	309	BCL	CHA-C1A-NA	-2.26	121.23	126.40
5	L	285	BPH	C12-C11-C10	2.25	123.59	113.24
4	N	284	BCL	C2A-C3A-C4A	2.25	105.51	101.87
6	L	286	U10	C15-C14-C16	2.24	119.04	115.27
4	M	309	BCL	CAA-CBA-CGA	2.23	119.77	113.25
4	O	309	BCL	CMB-C2B-C1B	-2.23	125.04	128.46
4	N	283	BCL	O1D-CGD-CBD	-2.22	119.94	124.48
4	O	309	BCL	CHA-C4D-ND	-2.22	127.86	132.50
4	N	282	BCL	OBB-CAB-CBB	-2.21	115.19	120.17
4	L	282	BCL	C3C-C2C-C1C	2.21	105.43	101.87
5	L	284	BPH	CMA-C3A-C2A	-2.20	105.13	113.99
4	L	283	BCL	CAA-C2A-C3A	-2.20	106.76	112.78
4	M	310	BCL	C7-C6-C5	-2.20	107.40	113.36
4	L	283	BCL	OBD-CAD-C3D	-2.17	123.30	128.52
6	O	311	U10	C50-C49-C51	2.16	118.91	115.27
4	N	283	BCL	CMA-C3A-C4A	-2.16	105.97	111.77
4	M	310	BCL	CHA-C1A-NA	-2.16	121.46	126.40
4	L	283	BCL	CMC-C2C-C3C	-2.16	105.13	113.83

*Continued on next page...*



*Continued from previous page...*

Mol	Chain	Res	Type	Atoms	Z	Observed(°)	Ideal(°)
4	O	309	BCL	CMD-C2D-C3D	-2.15	122.66	127.61
6	O	311	U10	C56-C54-C55	2.15	119.35	114.60
4	N	284	BCL	CHA-C1A-NA	-2.15	121.48	126.40
4	M	310	BCL	C2A-C1A-CHA	2.14	127.61	123.86
6	O	311	U10	C3M-O3-C3	2.14	124.06	116.47
5	N	285	BPH	CBA-CAA-C2A	2.14	120.07	113.81
5	L	285	BPH	CBA-CAA-C2A	2.14	120.07	113.81
4	N	283	BCL	CAA-C2A-C3A	-2.14	106.92	112.78
4	N	284	BCL	CHD-C4C-NC	2.13	127.44	125.08
4	L	283	BCL	C16-C15-C13	-2.13	109.03	115.92
6	L	286	U10	C1M-C1-C6	-2.13	120.93	124.40
5	N	285	BPH	C11-C12-C13	2.12	122.78	115.92
4	L	283	BCL	C12-C11-C10	-2.12	103.49	113.24
4	M	309	BCL	CED-O2D-CGD	2.12	120.73	115.94
6	O	311	U10	C20-C19-C21	2.11	118.82	115.27
4	N	284	BCL	CMC-C2C-C1C	-2.11	106.11	111.77
6	O	311	U10	C15-C14-C16	2.10	118.81	115.27
4	L	282	BCL	CAA-C2A-C3A	-2.10	107.03	112.78
4	M	309	BCL	CHD-C1D-ND	-2.10	122.52	124.45
6	O	311	U10	C1-C6-C5	-2.10	117.61	119.58
4	N	284	BCL	CAC-C3C-C4C	-2.09	107.94	112.58
4	M	309	BCL	C2A-C1A-CHA	2.09	127.51	123.86
5	L	285	BPH	C1C-C2C-C3C	2.08	104.82	102.84
6	O	311	U10	C45-C44-C46	2.08	118.76	115.27
4	M	310	BCL	CHD-C1D-ND	-2.08	122.55	124.45
4	M	310	BCL	C2A-C3A-C4A	2.07	105.21	101.87
4	L	282	BCL	C16-C15-C13	-2.07	109.24	115.92
5	O	310	BPH	C14-C13-C12	2.06	118.77	111.29
4	O	309	BCL	C4-C3-C5	2.06	118.74	115.27
4	M	309	BCL	CMA-C3A-C4A	-2.06	106.24	111.77
4	N	282	BCL	C2C-C3C-C4C	2.06	104.42	101.34
5	L	284	BPH	CAA-C2A-C3A	-2.05	107.15	112.78
4	N	282	BCL	C2A-C3A-C4A	2.05	105.18	101.87
4	O	309	BCL	CAC-C3C-C4C	-2.04	108.05	112.58
4	L	282	BCL	CMC-C2C-C3C	-2.04	105.60	113.83
4	L	283	BCL	C1-C2-C3	-2.04	122.52	126.04
6	N	286	U10	C3M-O3-C3	2.04	123.68	116.47
4	N	282	BCL	C3A-C2A-C1A	2.03	104.38	101.34
5	L	284	BPH	CED-O2D-CGD	2.03	120.53	115.94
4	N	284	BCL	OBB-CAB-CBB	-2.03	115.60	120.17
4	M	309	BCL	CHA-C1A-NA	-2.02	121.76	126.40
4	L	283	BCL	CAC-C3C-C4C	-2.02	108.10	112.58

*Continued on next page...*

*Continued from previous page...*

Mol	Chain	Res	Type	Atoms	Z	Observed(°)	Ideal(°)
4	M	309	BCL	C3A-C2A-C1A	2.01	104.35	101.34
6	O	311	U10	C4M-O4-C4	2.01	123.60	116.47
5	L	284	BPH	CAC-C3C-C2C	-2.01	109.25	114.26
5	N	285	BPH	C16-C15-C13	2.00	122.39	115.92

All (12) chirality outliers are listed below:

Mol	Chain	Res	Type	Atom
4	M	309	BCL	C8
4	M	309	BCL	C13
4	M	310	BCL	C8
4	M	310	BCL	C13
4	N	282	BCL	C8
4	N	282	BCL	C13
4	O	309	BCL	C8
5	L	284	BPH	C8
5	L	284	BPH	C13
5	L	285	BPH	C8
5	N	285	BPH	C8
5	O	310	BPH	C13

All (159) torsion outliers are listed below:

Mol	Chain	Res	Type	Atoms
4	L	283	BCL	CBD-CGD-O2D-CED
4	M	309	BCL	C2-C3-C5-C6
4	M	309	BCL	C4-C3-C5-C6
4	N	283	BCL	CBD-CGD-O2D-CED
4	N	284	BCL	CBD-CGD-O2D-CED
5	L	284	BPH	C4C-C3C-CAC-CBC
5	L	284	BPH	C2-C3-C5-C6
5	L	284	BPH	C4-C3-C5-C6
5	L	285	BPH	C4C-C3C-CAC-CBC
5	N	285	BPH	C4C-C3C-CAC-CBC
5	O	310	BPH	C4C-C3C-CAC-CBC
5	O	310	BPH	C2C-C3C-CAC-CBC
6	M	311	U10	C34-C36-C37-C38
6	M	311	U10	C49-C51-C52-C53
6	N	286	U10	C19-C21-C22-C23
6	N	286	U10	C24-C26-C27-C28
6	N	286	U10	C29-C31-C32-C33
6	O	311	U10	C14-C16-C17-C18

*Continued on next page...*

*Continued from previous page...*

<b>Mol</b>	<b>Chain</b>	<b>Res</b>	<b>Type</b>	<b>Atoms</b>
6	O	311	U10	C38-C39-C41-C42
6	O	311	U10	C40-C39-C41-C42
6	O	311	U10	C39-C41-C42-C43
4	N	283	BCL	O1D-CGD-O2D-CED
4	O	309	BCL	O1D-CGD-O2D-CED
4	N	282	BCL	CBD-CGD-O2D-CED
4	O	309	BCL	CBD-CGD-O2D-CED
5	L	284	BPH	CBD-CGD-O2D-CED
4	L	283	BCL	O1D-CGD-O2D-CED
4	N	284	BCL	O1D-CGD-O2D-CED
4	M	310	BCL	CBD-CGD-O2D-CED
5	N	285	BPH	CBD-CGD-O2D-CED
4	N	282	BCL	O1D-CGD-O2D-CED
4	M	309	BCL	C3-C5-C6-C7
4	N	282	BCL	C3-C5-C6-C7
5	L	285	BPH	CBD-CGD-O2D-CED
5	L	284	BPH	O1D-CGD-O2D-CED
4	N	283	BCL	CBA-CGA-O2A-C1
4	N	283	BCL	O1A-CGA-O2A-C1
4	N	283	BCL	C4-C3-C5-C6
4	N	283	BCL	C2-C3-C5-C6
5	O	310	BPH	CBD-CGD-O2D-CED
6	L	286	U10	C14-C16-C17-C18
6	M	311	U10	C24-C26-C27-C28
6	M	311	U10	C39-C41-C42-C43
6	N	286	U10	C39-C41-C42-C43
6	N	286	U10	C44-C46-C47-C48
6	N	286	U10	C49-C51-C52-C53
4	M	310	BCL	O1D-CGD-O2D-CED
4	M	309	BCL	O1A-CGA-O2A-C1
4	M	309	BCL	CBA-CGA-O2A-C1
4	N	283	BCL	C15-C16-C17-C18
5	L	285	BPH	C14-C13-C15-C16
5	N	285	BPH	O1D-CGD-O2D-CED
5	L	285	BPH	C8-C10-C11-C12
4	L	283	BCL	C13-C15-C16-C17
4	L	282	BCL	C13-C15-C16-C17
6	L	286	U10	C19-C21-C22-C23
6	L	286	U10	C39-C41-C42-C43
6	M	311	U10	C14-C16-C17-C18
6	N	286	U10	C9-C11-C12-C13
6	O	311	U10	C24-C26-C27-C28

*Continued on next page...*

*Continued from previous page...*

<b>Mol</b>	<b>Chain</b>	<b>Res</b>	<b>Type</b>	<b>Atoms</b>
5	O	310	BPH	O1A-CGA-O2A-C1
4	M	309	BCL	C15-C16-C17-C18
5	L	285	BPH	C5-C6-C7-C8
6	N	286	U10	C40-C39-C41-C42
5	O	310	BPH	CBA-CGA-O2A-C1
5	N	285	BPH	C3-C5-C6-C7
4	N	283	BCL	C5-C6-C7-C8
5	L	285	BPH	O1D-CGD-O2D-CED
6	N	286	U10	C20-C19-C21-C22
4	M	310	BCL	C14-C13-C15-C16
4	N	284	BCL	C3-C5-C6-C7
6	M	311	U10	C44-C46-C47-C48
5	L	284	BPH	O1A-CGA-O2A-C1
4	N	283	BCL	C3A-C2A-CAA-CBA
6	N	286	U10	C30-C29-C31-C32
6	M	311	U10	C33-C34-C36-C37
6	N	286	U10	C18-C19-C21-C22
6	N	286	U10	C28-C29-C31-C32
4	L	283	BCL	C3-C5-C6-C7
5	L	284	BPH	CBA-CGA-O2A-C1
5	O	310	BPH	O1D-CGD-O2D-CED
6	L	286	U10	C49-C51-C52-C53
6	M	311	U10	C35-C34-C36-C37
6	N	286	U10	C38-C39-C41-C42
4	L	282	BCL	C2A-CAA-CBA-CGA
5	L	285	BPH	C2C-C3C-CAC-CBC
5	N	285	BPH	C2C-C3C-CAC-CBC
4	N	283	BCL	C1A-C2A-CAA-CBA
4	L	283	BCL	C15-C16-C17-C18
5	O	310	BPH	C3-C5-C6-C7
6	N	286	U10	C1-C6-C7-C8
6	N	286	U10	C25-C24-C26-C27
6	N	286	U10	C5-C6-C7-C8
4	N	284	BCL	C15-C16-C17-C18
4	M	309	BCL	C12-C13-C15-C16
5	N	285	BPH	C11-C10-C8-C7
6	M	311	U10	C50-C49-C51-C52
6	M	311	U10	C48-C49-C51-C52
6	L	286	U10	C9-C11-C12-C13
5	N	285	BPH	C4-C3-C5-C6
5	O	310	BPH	C8-C10-C11-C12
6	N	286	U10	C45-C44-C46-C47

*Continued on next page...*

*Continued from previous page...*

Mol	Chain	Res	Type	Atoms
4	M	309	BCL	CAD-CBD-CGD-O2D
4	N	283	BCL	CAD-CBD-CGD-O2D
5	N	285	BPH	CAD-CBD-CGD-O2D
5	O	310	BPH	CAD-CBD-CGD-O2D
5	N	285	BPH	C2-C3-C5-C6
4	O	309	BCL	CHA-CBD-CGD-O1D
4	O	309	BCL	CHA-CBD-CGD-O2D
6	N	286	U10	C43-C44-C46-C47
5	L	284	BPH	C2C-C3C-CAC-CBC
4	N	282	BCL	C1A-C2A-CAA-CBA
4	M	309	BCL	C8-C10-C11-C12
6	N	286	U10	C6-C7-C8-C9
4	O	309	BCL	CAD-CBD-CGD-O1D
6	L	286	U10	C45-C44-C46-C47
5	L	285	BPH	C12-C13-C15-C16
6	N	286	U10	C23-C24-C26-C27
6	O	311	U10	C29-C31-C32-C33
5	O	310	BPH	C10-C11-C12-C13
6	M	311	U10	C5-C4-O4-C4M
6	O	311	U10	C25-C24-C26-C27
4	N	284	BCL	C13-C15-C16-C17
4	M	309	BCL	C14-C13-C15-C16
6	L	286	U10	C50-C49-C51-C52
4	L	282	BCL	C2-C1-O2A-CGA
6	L	286	U10	C26-C27-C28-C29
6	M	311	U10	C30-C29-C31-C32
6	L	286	U10	C12-C11-C9-C10
6	M	311	U10	C25-C24-C26-C27
6	O	311	U10	C20-C19-C21-C22
4	N	283	BCL	C2-C1-O2A-CGA
6	O	311	U10	C23-C24-C26-C27
4	L	283	BCL	C2A-CAA-CBA-CGA
6	O	311	U10	C5-C4-O4-C4M
6	L	286	U10	C12-C11-C9-C8
6	L	286	U10	C48-C49-C51-C52
6	M	311	U10	C28-C29-C31-C32
6	L	286	U10	C13-C14-C16-C17
6	L	286	U10	C43-C44-C46-C47
5	L	285	BPH	C11-C10-C8-C9
5	O	310	BPH	C11-C12-C13-C14
4	M	310	BCL	CAD-CBD-CGD-O2D
5	L	284	BPH	CAD-CBD-CGD-O2D

*Continued on next page...*

*Continued from previous page...*

Mol	Chain	Res	Type	Atoms
5	L	285	BPH	CAD-CBD-CGD-O2D
6	O	311	U10	C18-C19-C21-C22
4	M	309	BCL	C2A-CAA-CBA-CGA
5	L	284	BPH	C3-C5-C6-C7
4	M	309	BCL	C13-C15-C16-C17
4	N	282	BCL	C11-C10-C8-C9
5	N	285	BPH	C11-C10-C8-C9
4	N	282	BCL	C2A-CAA-CBA-CGA
6	M	311	U10	C45-C44-C46-C47
6	O	311	U10	C16-C17-C18-C19
6	O	311	U10	C45-C44-C46-C47
4	M	310	BCL	C12-C13-C15-C16
6	M	311	U10	C3-C4-O4-C4M
6	O	311	U10	C49-C51-C52-C53
5	L	285	BPH	CAA-CBA-CGA-O2A

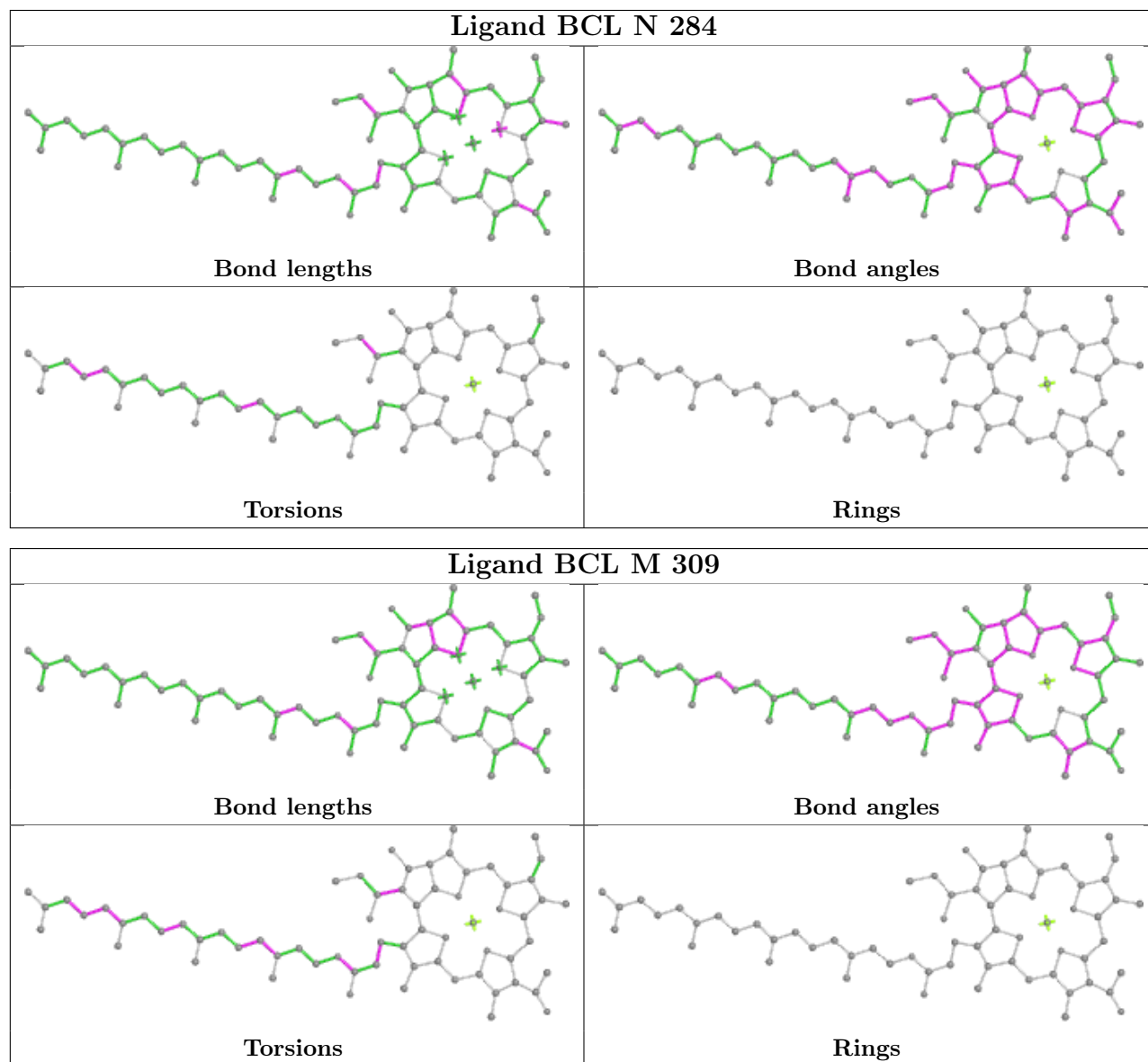
There are no ring outliers.

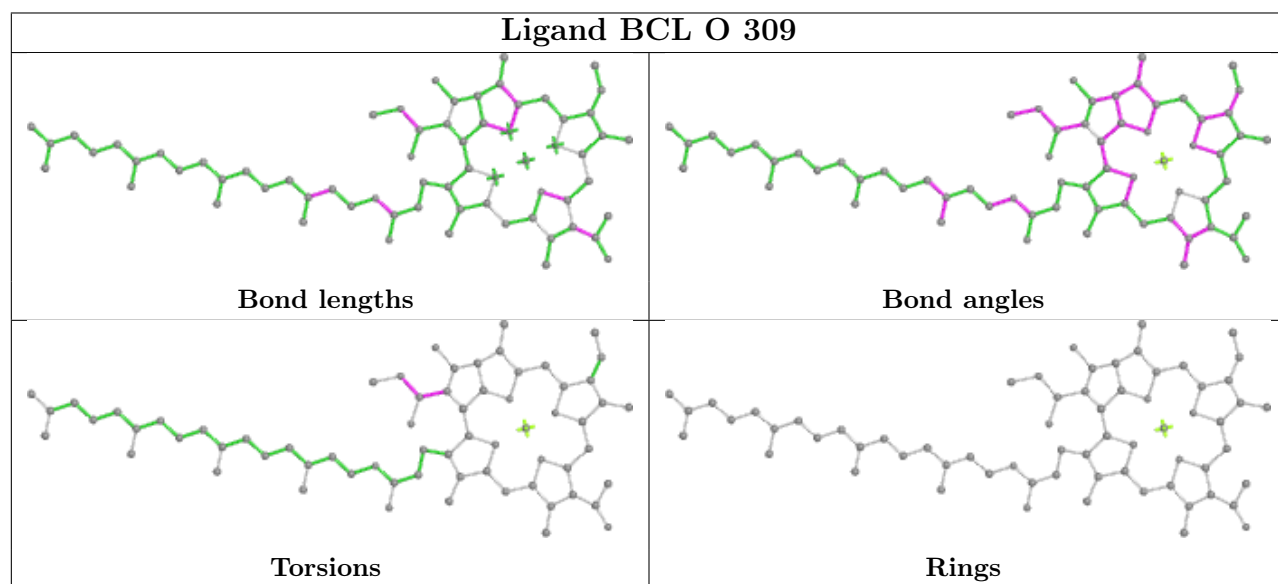
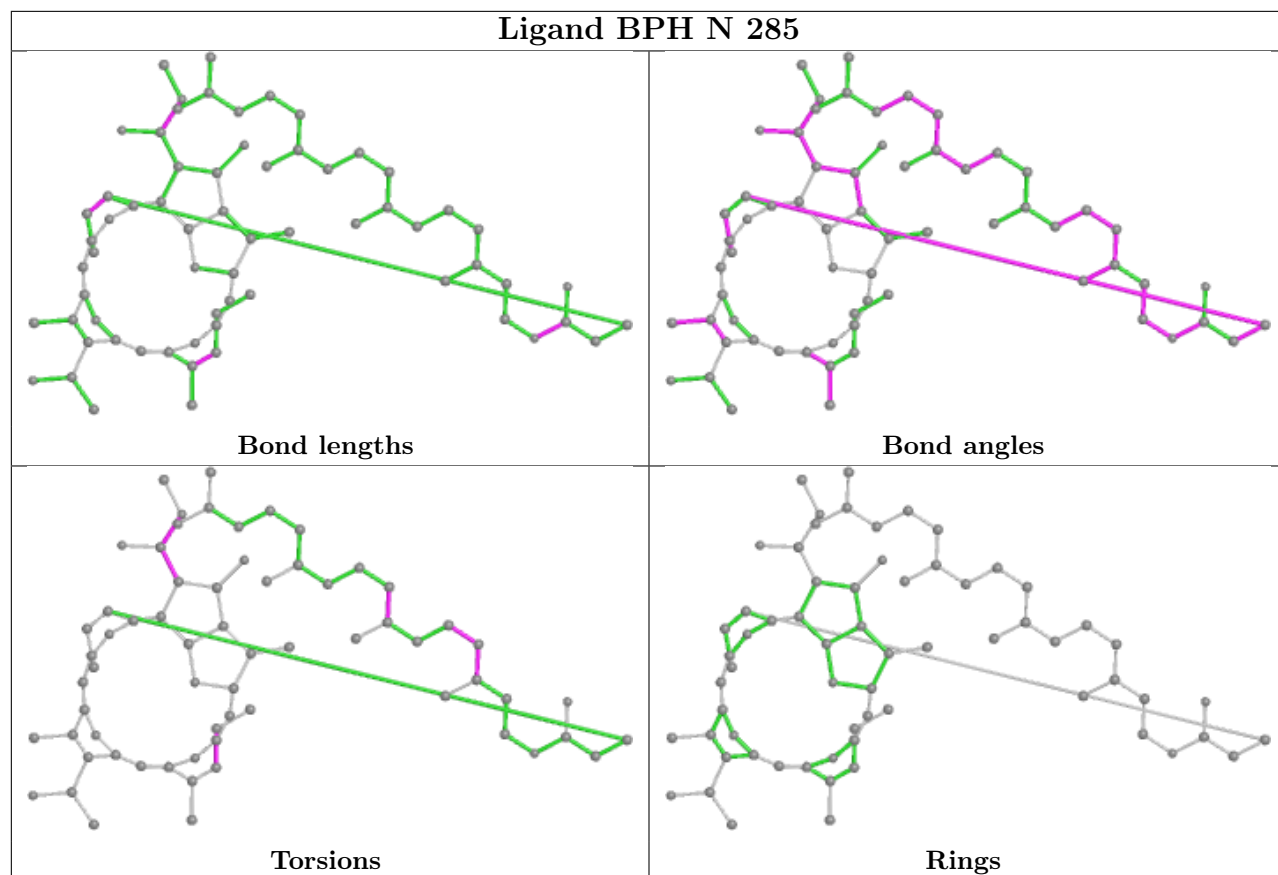
16 monomers are involved in 75 short contacts:

Mol	Chain	Res	Type	Clashes	Symm-Clashes
4	N	284	BCL	7	0
4	M	309	BCL	7	0
5	N	285	BPH	7	0
4	O	309	BCL	9	0
6	M	311	U10	1	0
4	N	283	BCL	6	0
6	O	311	U10	2	0
5	L	284	BPH	2	0
4	M	310	BCL	5	0
6	N	286	U10	6	0
4	L	282	BCL	8	0
4	N	282	BCL	7	0
4	L	283	BCL	6	0
5	L	285	BPH	9	0
6	L	286	U10	4	0
5	O	310	BPH	3	0

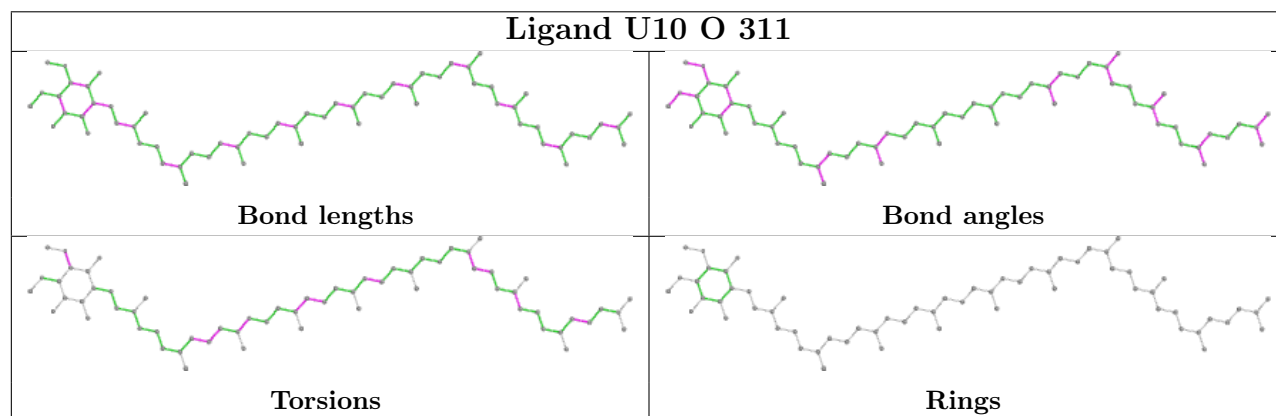
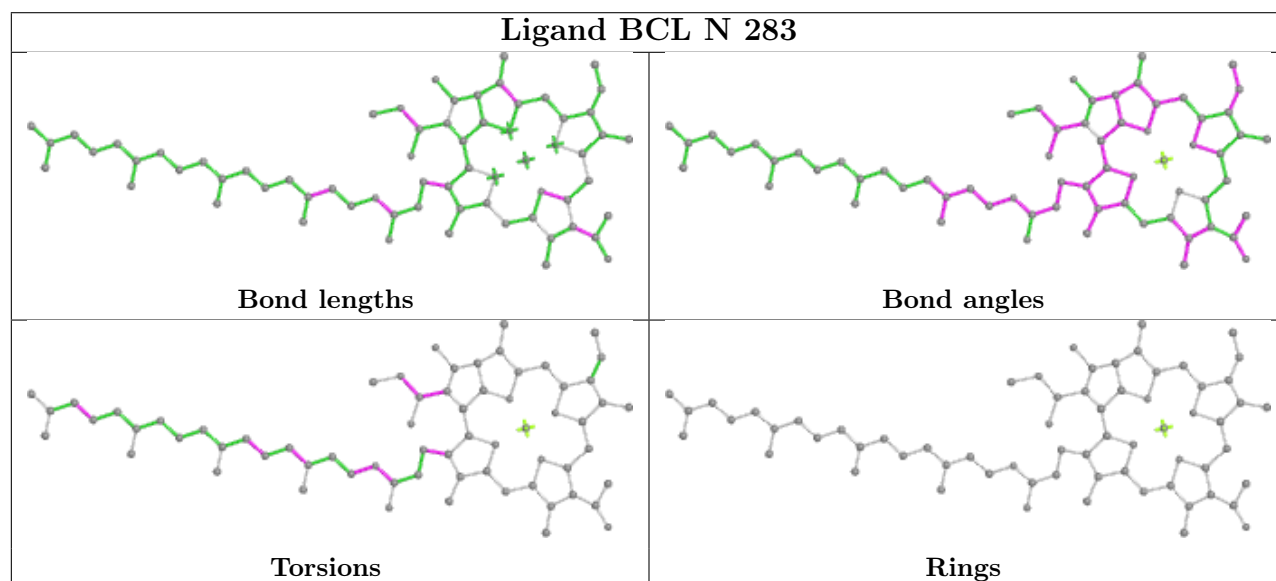
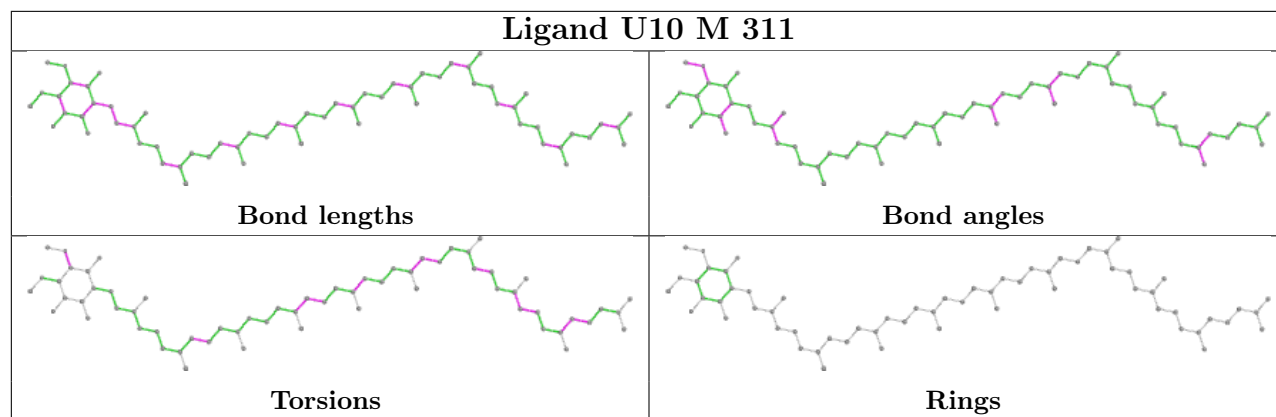
The following is a two-dimensional graphical depiction of Mogul quality analysis of bond lengths, bond angles, torsion angles, and ring geometry for all instances of the Ligand of Interest. In addition, ligands with molecular weight > 250 and outliers as shown on the validation Tables will also be included. For torsion angles, if less than 5% of the Mogul distribution of torsion angles is within 10 degrees of the torsion angle in question, then that torsion angle is considered an outlier.

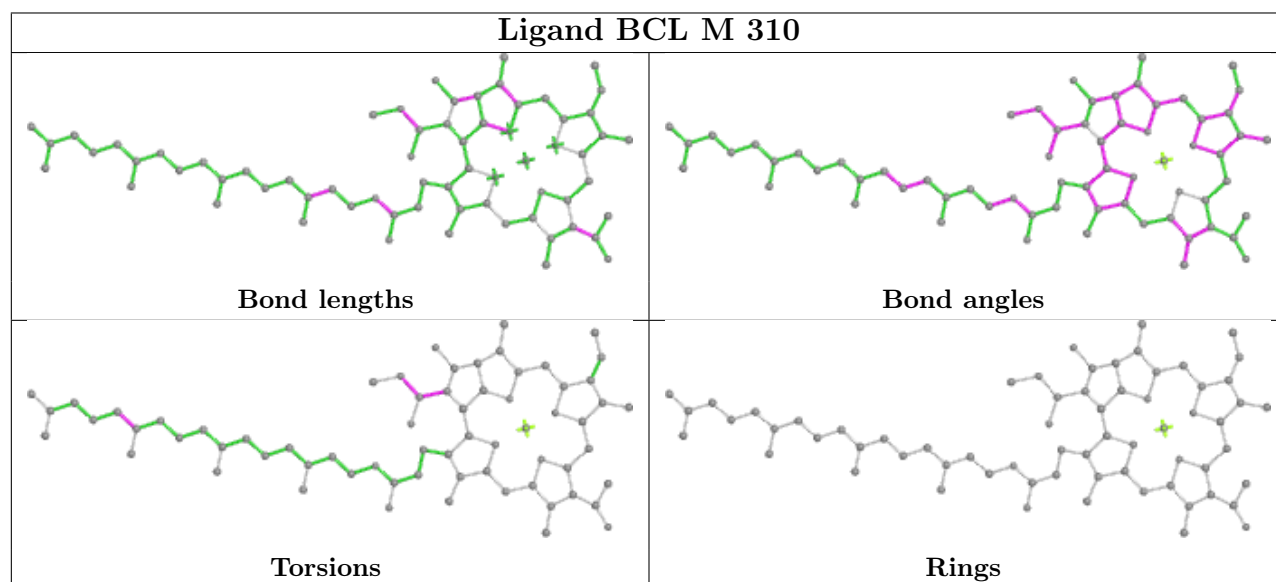
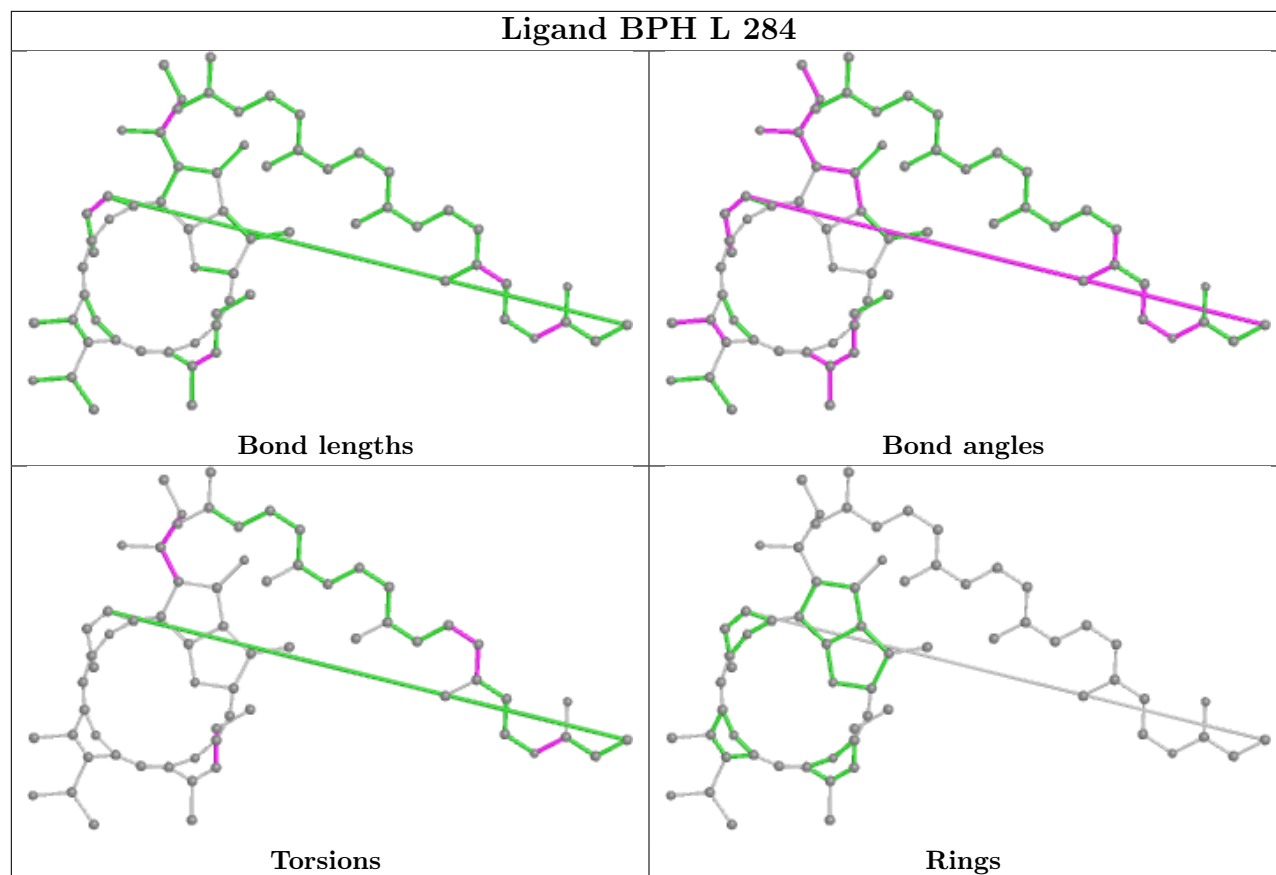
Any bond that is central to one or more torsion angles identified as an outlier by Mogul will be highlighted in the graph. For rings, the root-mean-square deviation (RMSD) between the ring in question and similar rings identified by Mogul is calculated over all ring torsion angles. If the average RMSD is greater than 60 degrees and the minimal RMSD between the ring in question and any Mogul-identified rings is also greater than 60 degrees, then that ring is considered an outlier. The outliers are highlighted in purple. The color gray indicates Mogul did not find sufficient equivalents in the CSD to analyse the geometry.

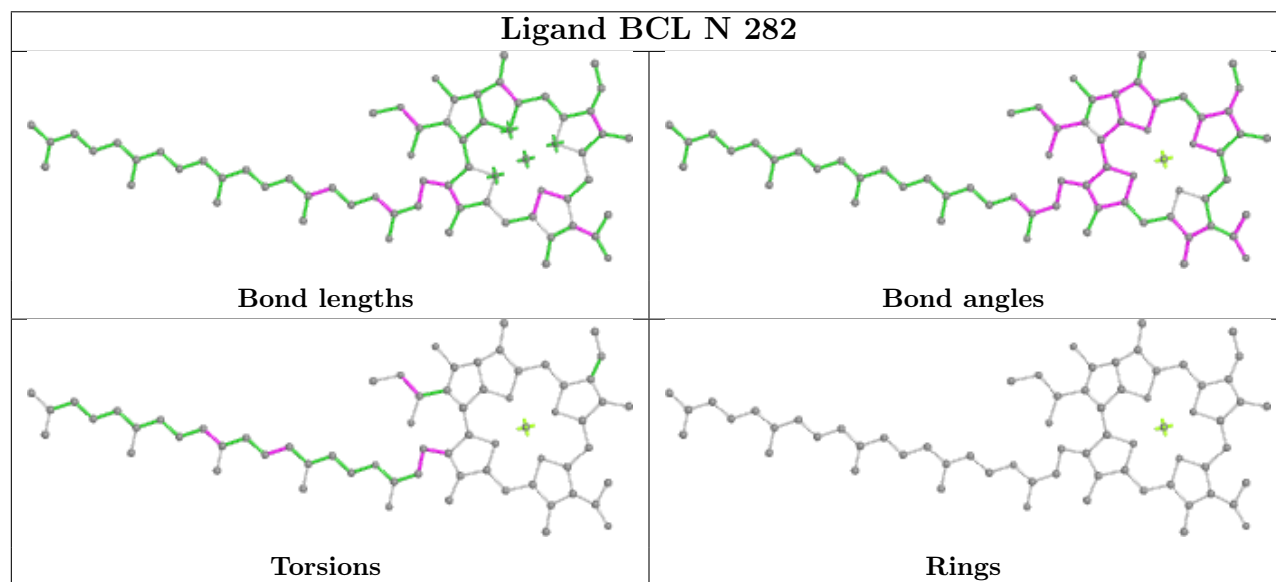
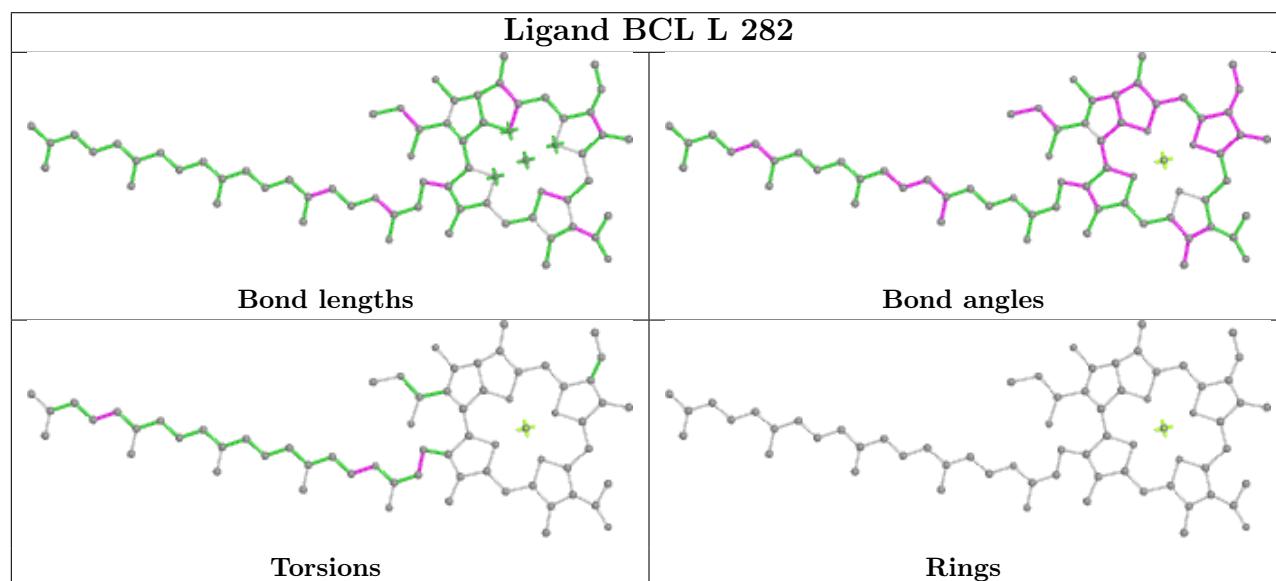
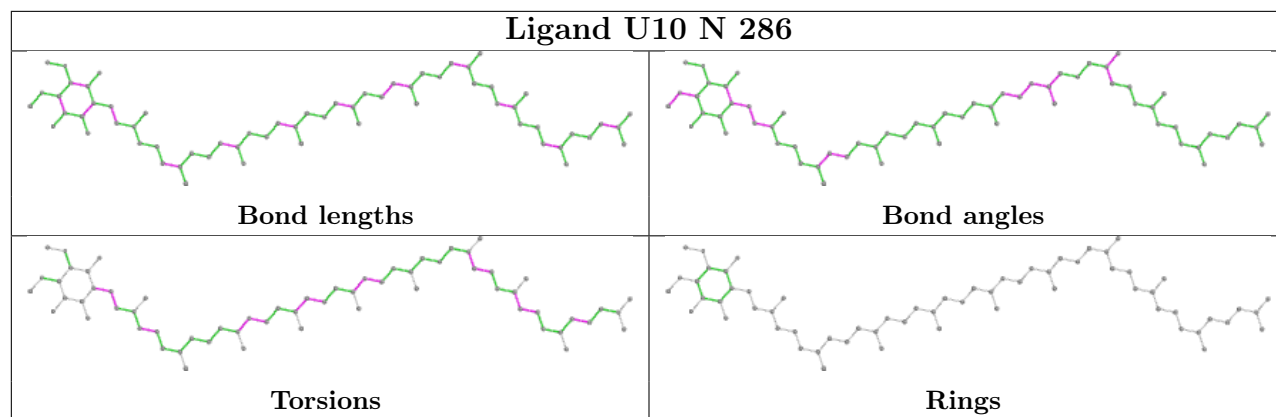


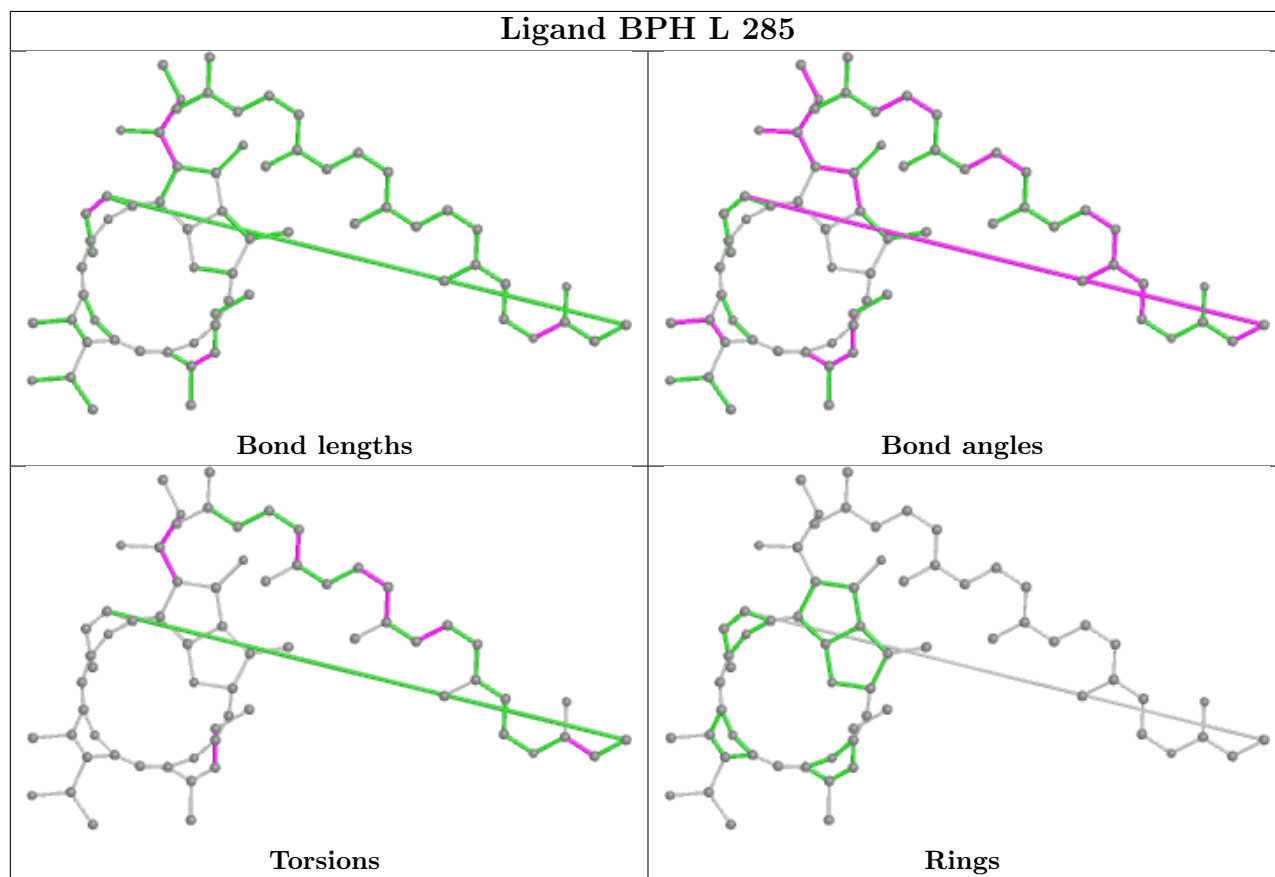
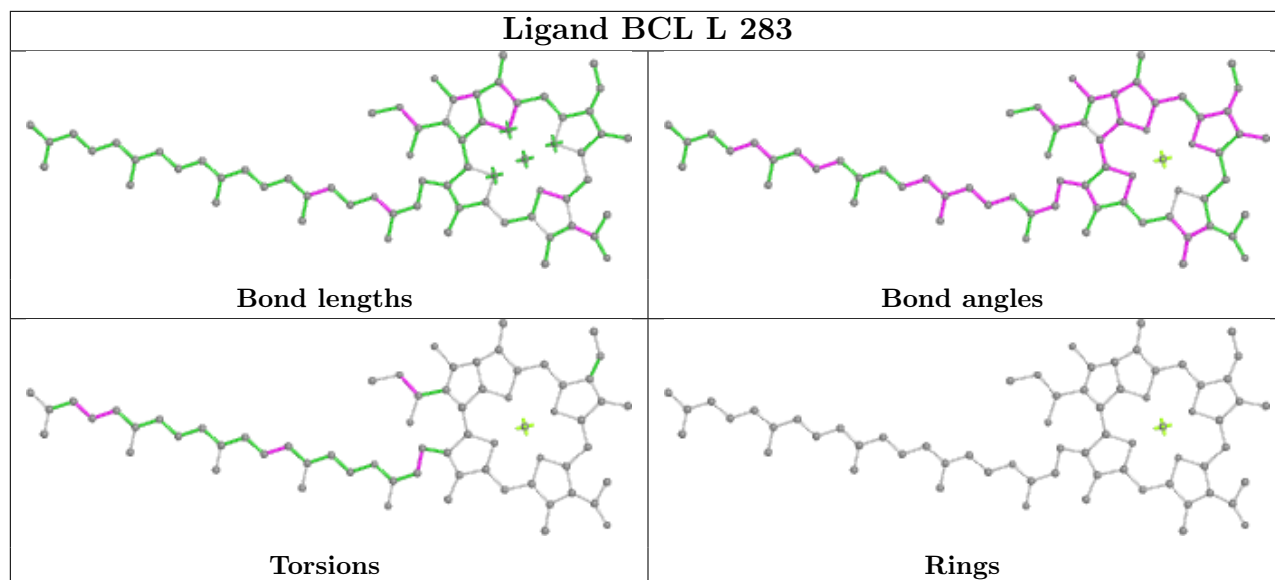


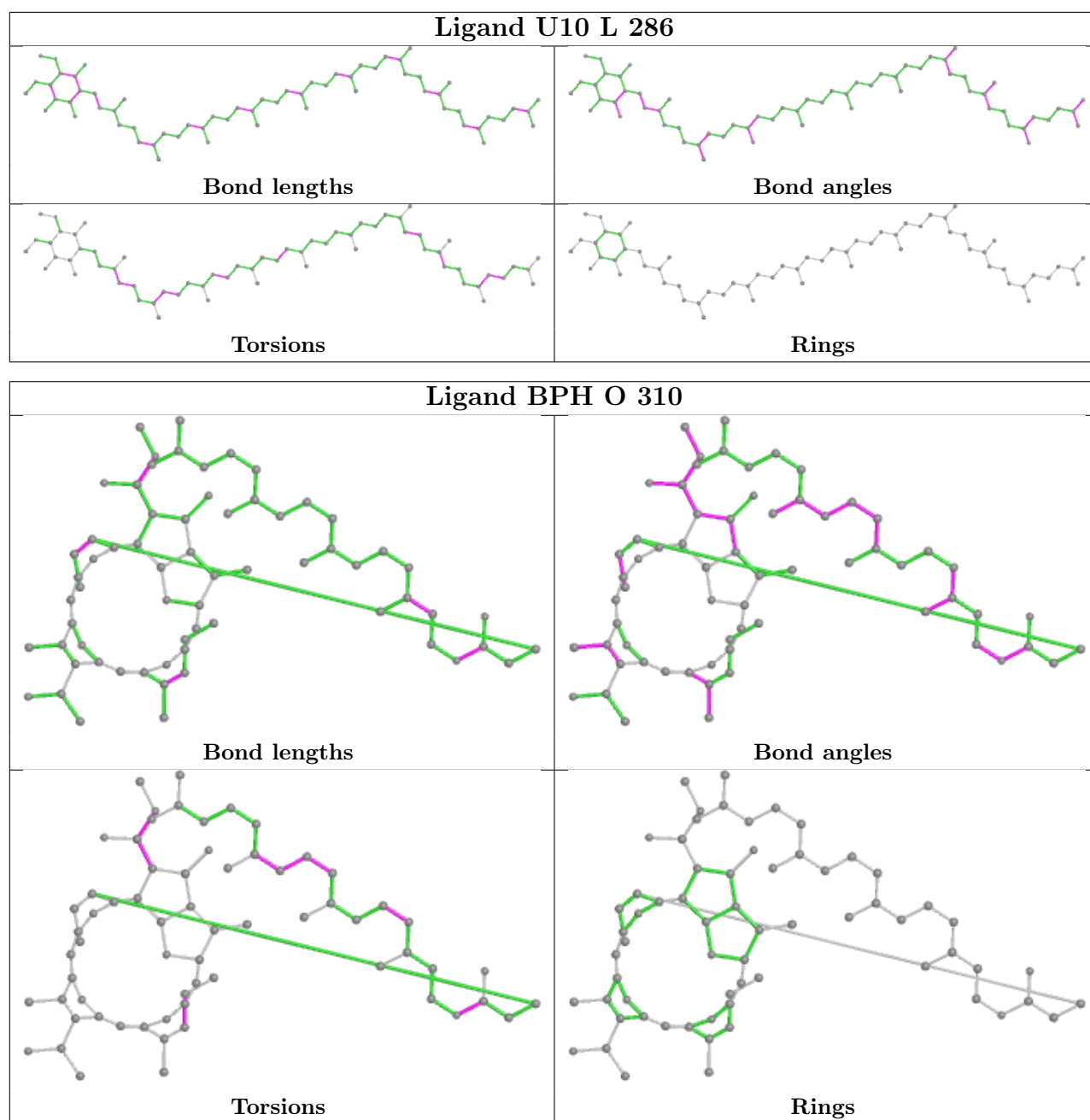












## 5.7 Other polymers [i](#)

There are no such residues in this entry.

## 5.8 Polymer linkage issues [i](#)

There are no chain breaks in this entry.

## 6 Fit of model and data

### 6.1 Protein, DNA and RNA chains

EDS was not executed - this section is therefore empty.

### 6.2 Non-standard residues in protein, DNA, RNA chains

EDS was not executed - this section is therefore empty.

### 6.3 Carbohydrates

EDS was not executed - this section is therefore empty.

### 6.4 Ligands

EDS was not executed - this section is therefore empty.

### 6.5 Other polymers

EDS was not executed - this section is therefore empty.