



Full wwPDB X-ray Structure Validation Report ⓘ

Aug 7, 2023 – 06:10 pm BST

PDB ID : 8AKA
Title : Human Sirt6 in complex with ADP-ribose and fragment cis-resveratrol
Authors : You, W.; Steegborn, C.
Deposited on : 2022-07-29
Resolution : 1.77 Å(reported)

This is a Full wwPDB X-ray Structure Validation Report for a publicly released PDB entry.

We welcome your comments at validation@mail.wwpdb.org

A user guide is available at

<https://www.wwpdb.org/validation/2017/XrayValidationReportHelp>

with specific help available everywhere you see the ⓘ symbol.

The types of validation reports are described at

<http://www.wwpdb.org/validation/2017/FAQs#types>.

The following versions of software and data (see [references ⓘ](#)) were used in the production of this report:

MolProbity : 4.02b-467
Mogul : 1.8.4, CSD as541be (2020)
Xtriage (Phenix) : 1.13
EDS : 2.34
buster-report : 1.1.7 (2018)
Percentile statistics : 20191225.v01 (using entries in the PDB archive December 25th 2019)
Refmac : 5.8.0158
CCP4 : 7.0.044 (Gargrove)
Ideal geometry (proteins) : Engh & Huber (2001)
Ideal geometry (DNA, RNA) : Parkinson et al. (1996)
Validation Pipeline (wwPDB-VP) : 2.34

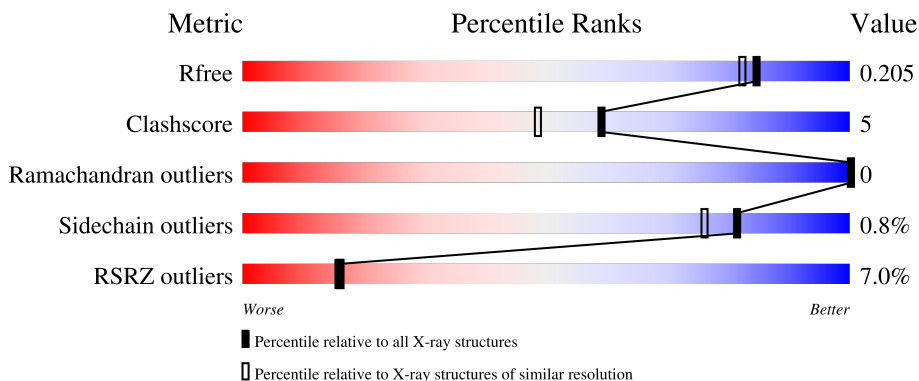
1 Overall quality at a glance

The following experimental techniques were used to determine the structure:

X-RAY DIFFRACTION

The reported resolution of this entry is 1.77 Å.

Percentile scores (ranging between 0-100) for global validation metrics of the entry are shown in the following graphic. The table shows the number of entries on which the scores are based.



Metric	Whole archive (#Entries)	Similar resolution (#Entries, resolution range(Å))
R_{free}	130704	9185 (1.80-1.76)
Clashscore	141614	10184 (1.80-1.76)
Ramachandran outliers	138981	10051 (1.80-1.76)
Sidechain outliers	138945	10050 (1.80-1.76)
RSRZ outliers	127900	9032 (1.80-1.76)

The table below summarises the geometric issues observed across the polymeric chains and their fit to the electron density. The red, orange, yellow and green segments of the lower bar indicate the fraction of residues that contain outliers for ≥ 3 , 2, 1 and 0 types of geometric quality criteria respectively. A grey segment represents the fraction of residues that are not modelled. The numeric value for each fraction is indicated below the corresponding segment, with a dot representing fractions $\leq 5\%$. The upper red bar (where present) indicates the fraction of residues that have poor fit to the electron density. The numeric value is given above the bar.

Mol	Chain	Length	Quality of chain
1	A	302	 5% 79% 13% • 7%
1	B	302	 8% 82% 8% • 8%

2 Entry composition i

There are 10 unique types of molecules in this entry. The entry contains 4703 atoms, of which 0 are hydrogens and 0 are deuteriums.

In the tables below, the ZeroOcc column contains the number of atoms modelled with zero occupancy, the AltConf column contains the number of residues with at least one atom in alternate conformation and the Trace column contains the number of residues modelled with at most 2 atoms.

- Molecule 1 is a protein called NAD-dependent protein deacetylase sirtuin-6.

Mol	Chain	Residues	Atoms					ZeroOcc	AltConf	Trace
			Total	C	N	O	S			
1	A	282	Total	C	N	O	S	0	0	0
			2202	1386	404	401	11			
1	B	277	Total	C	N	O	S	0	0	0
			2158	1358	396	393	11			

There are 12 discrepancies between the modelled and reference sequences:

Chain	Residue	Modelled	Actual	Comment	Reference
A	7	GLY	-	expression tag	UNP Q8N6T7
A	8	ILE	-	expression tag	UNP Q8N6T7
A	9	ASP	-	expression tag	UNP Q8N6T7
A	10	PRO	-	expression tag	UNP Q8N6T7
A	11	PHE	-	expression tag	UNP Q8N6T7
A	12	THR	-	expression tag	UNP Q8N6T7
B	7	GLY	-	expression tag	UNP Q8N6T7
B	8	ILE	-	expression tag	UNP Q8N6T7
B	9	ASP	-	expression tag	UNP Q8N6T7
B	10	PRO	-	expression tag	UNP Q8N6T7
B	11	PHE	-	expression tag	UNP Q8N6T7
B	12	THR	-	expression tag	UNP Q8N6T7

- Molecule 2 is [(2R,3S,4R,5R)-5-(6-AMINOPURIN-9-YL)-3,4-DIHYDROXY-OXOLAN-2-YL]METHYL [HYDROXY-[(2R,3S,4R,5S)-3,4,5-TRIHYDROXYOXOLAN-2-YL]METHOXY]PHOSPHORYL] HYDROGEN PHOSPHATE (three-letter code: AR6) (formula: C₁₅H₂₃N₅O₁₄P₂).

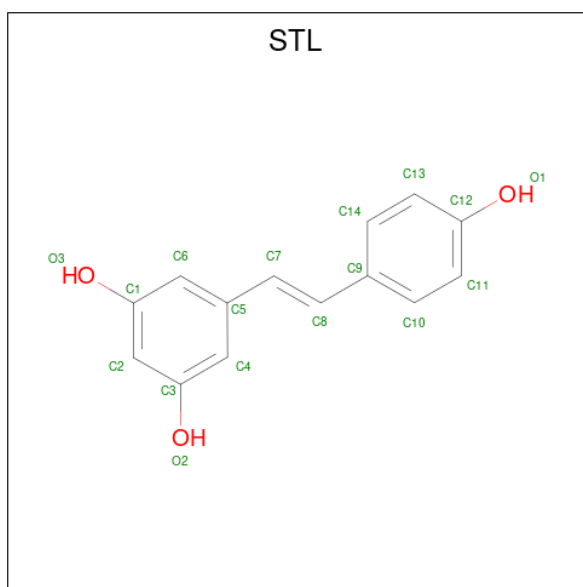


Mol	Chain	Residues	Atoms				ZeroOcc	AltConf	
			Total	C	N	O			P
2	A	1	36	15	5	14	2	0	0
2	B	1	36	15	5	14	2	0	0

- Molecule 3 is ZINC ION (three-letter code: ZN) (formula: Zn).

Mol	Chain	Residues	Atoms		ZeroOcc	AltConf
			Total	Zn		
3	A	1	1	1	0	0
3	B	1	1	1	0	0

- Molecule 4 is RESVERATROL (three-letter code: STL) (formula: C₁₄H₁₂O₃) (labeled as "Ligand of Interest" by depositor).



Mol	Chain	Residues	Atoms			ZeroOcc	AltConf
4	A	1	Total	C	O	0	0
			17	14	3		
4	B	1	Total	C	O	0	0
			17	14	3		

- Molecule 5 is DI(HYDROXYETHYL)ETHER (three-letter code: PEG) (formula: $C_4H_{10}O_3$).



Mol	Chain	Residues	Atoms			ZeroOcc	AltConf
5	A	1	Total	C	O	0	0
			7	4	3		
5	B	1	Total	C	O	0	0
			7	4	3		

- Molecule 6 is SULFATE ION (three-letter code: SO4) (formula: O₄S).



Mol	Chain	Residues	Atoms			ZeroOcc	AltConf
6	A	1	Total	O	S	0	0
			5	4	1		
6	A	1	Total	O	S	0	0
			5	4	1		
6	A	1	Total	O	S	0	0
			5	4	1		
6	A	1	Total	O	S	0	0
			5	4	1		
6	A	1	Total	O	S	0	0
			5	4	1		
6	B	1	Total	O	S	0	0
			5	4	1		
6	B	1	Total	O	S	0	0
			5	4	1		
6	B	1	Total	O	S	0	0
			5	4	1		

- Molecule 7 is TRIETHYLENE GLYCOL (three-letter code: PGE) (formula: C₆H₁₄O₄).



Mol	Chain	Residues	Atoms	ZeroOcc	AltConf
7	A	1	Total C O 10 6 4	0	0
7	B	1	Total C O 10 6 4	0	0

- Molecule 8 is CHLORIDE ION (three-letter code: CL) (formula: Cl).

Mol	Chain	Residues	Atoms	ZeroOcc	AltConf
8	A	4	Total Cl 4 4	0	0
8	B	3	Total Cl 3 3	0	0

- Molecule 9 is 1,2-ETHANEDIOL (three-letter code: EDO) (formula: C₂H₆O₂).



Mol	Chain	Residues	Atoms	ZeroOcc	AltConf
9	B	1	Total C O 4 2 2	0	0

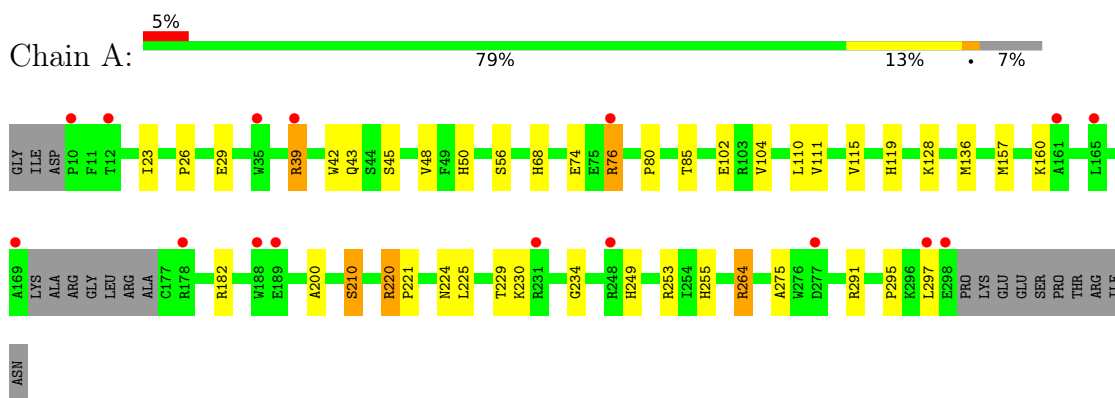
- Molecule 10 is water.

Mol	Chain	Residues	Atoms	ZeroOcc	AltConf
10	A	80	Total O 80 80	0	0
10	B	60	Total O 60 60	0	0

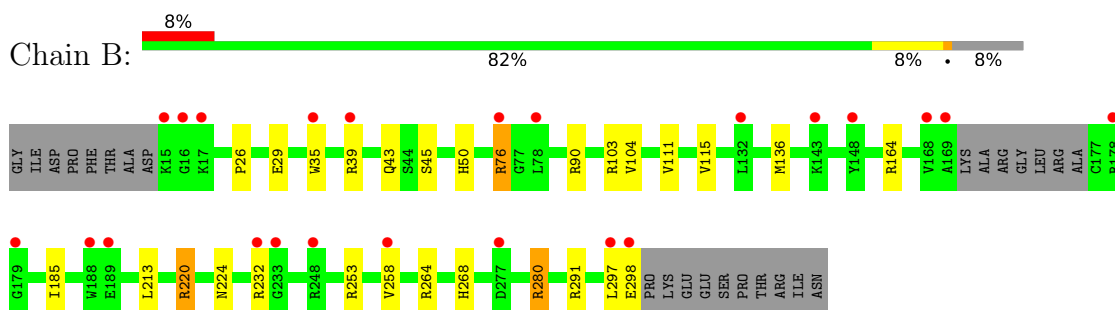
3 Residue-property plots [i](#)

These plots are drawn for all protein, RNA, DNA and oligosaccharide chains in the entry. The first graphic for a chain summarises the proportions of the various outlier classes displayed in the second graphic. The second graphic shows the sequence view annotated by issues in geometry and electron density. Residues are color-coded according to the number of geometric quality criteria for which they contain at least one outlier: green = 0, yellow = 1, orange = 2 and red = 3 or more. A red dot above a residue indicates a poor fit to the electron density ($RSRZ > 2$). Stretches of 2 or more consecutive residues without any outlier are shown as a green connector. Residues present in the sample, but not in the model, are shown in grey.

- Molecule 1: NAD-dependent protein deacetylase sirtuin-6



- Molecule 1: NAD-dependent protein deacetylase sirtuin-6



4 Data and refinement statistics

Property	Value	Source
Space group	P 63	Depositor
Cell constants a, b, c, α , β , γ	91.03Å 91.03Å 143.20Å 90.00° 90.00° 120.00°	Depositor
Resolution (Å)	43.38 – 1.77 43.38 – 1.77	Depositor EDS
% Data completeness (in resolution range)	99.8 (43.38-1.77) 99.8 (43.38-1.77)	Depositor EDS
R_{merge}	(Not available)	Depositor
R_{sym}	(Not available)	Depositor
$\langle I/\sigma(I) \rangle$ ¹	1.04 (at 1.77Å)	Xtriage
Refinement program	REFMAC 5.8.0267	Depositor
R, R_{free}	0.179 , 0.207 0.184 , 0.205	Depositor DCC
R_{free} test set	2100 reflections (3.21%)	wwPDB-VP
Wilson B-factor (Å ²)	29.0	Xtriage
Anisotropy	0.436	Xtriage
Bulk solvent k_{sol} (e/Å ³), B_{sol} (Å ²)	0.37 , 26.6	EDS
L-test for twinning ²	$\langle L \rangle = 0.40$, $\langle L^2 \rangle = 0.22$	Xtriage
Estimated twinning fraction	0.347 for h,-h-k,-l	Xtriage
Reported twinning fraction	0.625 for H, K, L 0.375 for -K, -H, -L	Depositor
Outliers	0 of 65354 reflections	Xtriage
F_o, F_c correlation	0.97	EDS
Total number of atoms	4703	wwPDB-VP
Average B, all atoms (Å ²)	40.0	wwPDB-VP

Xtriage's analysis on translational NCS is as follows: *The largest off-origin peak in the Patterson function is 3.50% of the height of the origin peak. No significant pseudotranslation is detected.*

¹Intensities estimated from amplitudes.

²Theoretical values of $\langle |L| \rangle$, $\langle L^2 \rangle$ for acentric reflections are 0.5, 0.333 respectively for untwinned datasets, and 0.375, 0.2 for perfectly twinned datasets.

5 Model quality [i](#)

5.1 Standard geometry [i](#)

Bond lengths and bond angles in the following residue types are not validated in this section: SO4, ZN, EDO, PGE, CL, STL, AR6, PEG

The Z score for a bond length (or angle) is the number of standard deviations the observed value is removed from the expected value. A bond length (or angle) with $|Z| > 5$ is considered an outlier worth inspection. RMSZ is the root-mean-square of all Z scores of the bond lengths (or angles).

Mol	Chain	Bond lengths		Bond angles	
		RMSZ	# Z >5	RMSZ	# Z >5
1	A	0.79	1/2251 (0.0%)	1.02	10/3053 (0.3%)
1	B	0.72	0/2205	0.96	10/2991 (0.3%)
All	All	0.76	1/4456 (0.0%)	0.99	20/6044 (0.3%)

All (1) bond length outliers are listed below:

Mol	Chain	Res	Type	Atoms	Z	Observed(Å)	Ideal(Å)
1	A	56	SER	CA-CB	-5.14	1.45	1.52

All (20) bond angle outliers are listed below:

Mol	Chain	Res	Type	Atoms	Z	Observed(°)	Ideal(°)
1	A	220	ARG	NE-CZ-NH2	7.61	124.10	120.30
1	A	39	ARG	NE-CZ-NH2	7.24	123.92	120.30
1	A	264	ARG	NE-CZ-NH2	-7.11	116.75	120.30
1	A	264	ARG	NE-CZ-NH1	6.80	123.70	120.30
1	B	253	ARG	NE-CZ-NH2	-6.74	116.93	120.30
1	A	76	ARG	NE-CZ-NH2	-6.59	117.01	120.30
1	A	253	ARG	NE-CZ-NH1	-6.52	117.04	120.30
1	B	76	ARG	NE-CZ-NH2	6.50	123.55	120.30
1	B	253	ARG	NE-CZ-NH1	6.10	123.35	120.30
1	B	76	ARG	NE-CZ-NH1	-6.06	117.27	120.30
1	B	232	ARG	NE-CZ-NH2	-6.04	117.28	120.30
1	A	39	ARG	NE-CZ-NH1	-6.02	117.29	120.30
1	A	253	ARG	NE-CZ-NH2	5.97	123.28	120.30
1	A	220	ARG	NE-CZ-NH1	-5.91	117.34	120.30
1	B	39	ARG	NE-CZ-NH1	5.86	123.23	120.30
1	B	220	ARG	NE-CZ-NH2	-5.84	117.38	120.30
1	A	76	ARG	NE-CZ-NH1	5.59	123.10	120.30
1	B	264	ARG	NE-CZ-NH1	-5.27	117.66	120.30

Continued on next page...

Continued from previous page...

Mol	Chain	Res	Type	Atoms	Z	Observed(°)	Ideal(°)
1	B	280	ARG	NE-CZ-NH1	-5.16	117.72	120.30
1	B	220	ARG	NE-CZ-NH1	5.13	122.87	120.30

There are no chirality outliers.

There are no planarity outliers.

5.2 Too-close contacts

In the following table, the Non-H and H(model) columns list the number of non-hydrogen atoms and hydrogen atoms in the chain respectively. The H(added) column lists the number of hydrogen atoms added and optimized by MolProbity. The Clashes column lists the number of clashes within the asymmetric unit, whereas Symm-Clashes lists symmetry-related clashes.

Mol	Chain	Non-H	H(model)	H(added)	Clashes	Symm-Clashes
1	A	2202	0	2215	27	0
1	B	2158	0	2171	15	0
2	A	36	0	21	0	0
2	B	36	0	20	0	0
3	A	1	0	0	0	0
3	B	1	0	0	0	0
4	A	17	0	12	1	0
4	B	17	0	12	1	0
5	A	7	0	10	0	0
5	B	7	0	10	0	0
6	A	30	0	0	3	0
6	B	20	0	0	2	0
7	A	10	0	14	0	0
7	B	10	0	14	0	0
8	A	4	0	0	1	0
8	B	3	0	0	1	0
9	B	4	0	6	0	0
10	A	80	0	0	8	0
10	B	60	0	0	3	0
All	All	4703	0	4505	43	0

The all-atom clashscore is defined as the number of clashes found per 1000 atoms (including hydrogen atoms). The all-atom clashscore for this structure is 5.

All (43) close contacts within the same asymmetric unit are listed below, sorted by their clash magnitude.

Atom-1	Atom-2	Interatomic distance (Å)	Clash overlap (Å)
1:A:74:GLU:HG3	10:A:554:HOH:O	1.56	1.02
1:A:115:VAL:O	1:A:136:MET:HG2	1.75	0.86
1:B:115:VAL:O	1:B:136:MET:HG2	1.81	0.80
8:A:414:CL:CL	10:A:547:HOH:O	2.51	0.66
1:A:50:HIS:HA	1:A:111:VAL:O	2.01	0.61
1:B:103:ARG:HD3	8:B:411:CL:CL	2.40	0.58
1:B:104:VAL:HB	1:B:291:ARG:HB3	1.85	0.58
1:A:157:MET:SD	4:A:403:STL:H14	2.44	0.57
1:B:50:HIS:HA	1:B:111:VAL:O	2.05	0.56
1:A:85:THR:HG23	10:A:504:HOH:O	2.08	0.54
1:B:164:ARG:NH1	6:B:408:SO4:O3	2.33	0.53
1:B:224:ASN:ND2	6:B:407:SO4:O1	2.32	0.52
1:A:102:GLU:OE2	1:A:128:LYS:NZ	2.35	0.52
1:A:104:VAL:HB	1:A:291:ARG:HB3	1.91	0.52
1:A:26:PRO:HD2	1:A:29:GLU:OE2	2.10	0.51
1:A:275:ALA:HA	6:A:407:SO4:O1	2.10	0.51
1:B:35:TRP:CE2	1:B:268:HIS:CE1	3.00	0.50
1:A:160:LYS:O	1:A:182:ARG:HA	2.10	0.50
1:B:43:GLN:HG3	1:B:297:LEU:HD13	1.94	0.49
1:A:80:PRO:HD3	10:A:554:HOH:O	2.13	0.48
1:B:220:ARG:HE	1:B:224:ASN:HD21	1.60	0.48
1:A:76:ARG:CD	10:A:570:HOH:O	2.62	0.47
1:B:280:ARG:HB2	10:B:549:HOH:O	2.13	0.47
1:B:90:ARG:NH2	10:B:506:HOH:O	2.46	0.47
1:A:110:LEU:HD21	1:A:119:HIS:CE1	2.50	0.47
1:A:43:GLN:HG3	1:A:297:LEU:HD13	1.97	0.46
1:B:76:ARG:NE	10:B:511:HOH:O	2.50	0.45
1:B:185:ILE:HG23	4:B:404:STL:H13	1.99	0.45
1:A:230:LYS:HD2	1:A:249:HIS:O	2.17	0.44
1:A:39:ARG:HD3	10:A:577:HOH:O	2.18	0.44
1:A:200:ALA:HB1	1:A:225:LEU:HD13	2.00	0.43
1:A:48:VAL:O	1:A:210:SER:HA	2.19	0.43
1:A:220:ARG:HD3	1:A:224:ASN:ND2	2.34	0.42
1:A:76:ARG:HD2	10:A:570:HOH:O	2.20	0.42
1:B:26:PRO:HD2	1:B:29:GLU:OE2	2.19	0.42
1:A:68:HIS:ND1	6:A:405:SO4:O2	2.42	0.42
1:A:42:TRP:CH2	1:A:295:PRO:HG2	2.55	0.42
1:A:229:THR:O	1:A:234:GLY:HA3	2.20	0.41
1:A:221:PRO:HB3	6:A:408:SO4:O4	2.21	0.40
1:B:213:LEU:HB3	1:B:258:VAL:HG21	2.03	0.40
1:A:23:ILE:O	1:A:255:HIS:HB3	2.22	0.40
1:A:220:ARG:HD3	1:A:224:ASN:HD21	1.87	0.40

Continued on next page...

Continued from previous page...

Atom-1	Atom-2	Interatomic distance (Å)	Clash overlap (Å)
1:A:264:ARG:HD3	10:A:564:HOH:O	2.22	0.40

There are no symmetry-related clashes.

5.3 Torsion angles [i](#)

5.3.1 Protein backbone [i](#)

In the following table, the Percentiles column shows the percent Ramachandran outliers of the chain as a percentile score with respect to all X-ray entries followed by that with respect to entries of similar resolution.

The Analysed column shows the number of residues for which the backbone conformation was analysed, and the total number of residues.

Mol	Chain	Analysed	Favoured	Allowed	Outliers	Percentiles	
1	A	278/302 (92%)	268 (96%)	10 (4%)	0	100	100
1	B	273/302 (90%)	269 (98%)	4 (2%)	0	100	100
All	All	551/604 (91%)	537 (98%)	14 (2%)	0	100	100

There are no Ramachandran outliers to report.

5.3.2 Protein sidechains [i](#)

In the following table, the Percentiles column shows the percent sidechain outliers of the chain as a percentile score with respect to all X-ray entries followed by that with respect to entries of similar resolution.

The Analysed column shows the number of residues for which the sidechain conformation was analysed, and the total number of residues.

Mol	Chain	Analysed	Rotameric	Outliers	Percentiles	
1	A	239/256 (93%)	237 (99%)	2 (1%)	81	76
1	B	234/256 (91%)	232 (99%)	2 (1%)	78	72
All	All	473/512 (92%)	469 (99%)	4 (1%)	81	76

All (4) residues with a non-rotameric sidechain are listed below:

Mol	Chain	Res	Type
1	A	45	SER
1	A	210	SER
1	B	45	SER
1	B	298	GLU

Sometimes sidechains can be flipped to improve hydrogen bonding and reduce clashes. All (1) such sidechains are listed below:

Mol	Chain	Res	Type
1	A	50	HIS

5.3.3 RNA [i](#)

There are no RNA molecules in this entry.

5.4 Non-standard residues in protein, DNA, RNA chains [i](#)

There are no non-standard protein/DNA/RNA residues in this entry.

5.5 Carbohydrates [i](#)

There are no monosaccharides in this entry.

5.6 Ligand geometry [i](#)

Of 28 ligands modelled in this entry, 9 are monoatomic - leaving 19 for Mogul analysis.

In the following table, the Counts columns list the number of bonds (or angles) for which Mogul statistics could be retrieved, the number of bonds (or angles) that are observed in the model and the number of bonds (or angles) that are defined in the Chemical Component Dictionary. The Link column lists molecule types, if any, to which the group is linked. The Z score for a bond length (or angle) is the number of standard deviations the observed value is removed from the expected value. A bond length (or angle) with $|Z| > 2$ is considered an outlier worth inspection. RMSZ is the root-mean-square of all Z scores of the bond lengths (or angles).

Mol	Type	Chain	Res	Link	Bond lengths			Bond angles		
					Counts	RMSZ	$\# Z > 2$	Counts	RMSZ	$\# Z > 2$
6	SO4	A	408	-	4,4,4	0.36	0	6,6,6	0.13	0
4	STL	A	403	-	18,18,18	1.84	6 (33%)	24,24,24	1.15	1 (4%)
6	SO4	A	407	-	4,4,4	0.28	0	6,6,6	0.11	0
9	EDO	B	405	-	3,3,3	0.19	0	2,2,2	0.07	0

Mol	Type	Chain	Res	Link	Bond lengths			Bond angles		
					Counts	RMSZ	# Z > 2	Counts	RMSZ	# Z > 2
6	SO4	B	409	-	4,4,4	0.30	0	6,6,6	0.07	0
2	AR6	B	402	-	34,39,39	0.67	0	40,60,60	0.90	1 (2%)
6	SO4	B	407	-	4,4,4	0.39	0	6,6,6	0.06	0
5	PEG	A	404	-	6,6,6	0.17	0	5,5,5	0.15	0
6	SO4	B	406	-	4,4,4	0.41	0	6,6,6	0.12	0
6	SO4	B	408	-	4,4,4	0.32	0	6,6,6	0.08	0
6	SO4	A	405	-	4,4,4	0.60	0	6,6,6	0.27	0
6	SO4	A	410	-	4,4,4	0.36	0	6,6,6	0.07	0
7	PGE	A	411	-	9,9,9	0.21	0	8,8,8	0.13	0
6	SO4	A	409	-	4,4,4	0.35	0	6,6,6	0.10	0
2	AR6	A	401	-	34,39,39	0.76	0	40,60,60	0.91	1 (2%)
4	STL	B	404	-	18,18,18	1.55	3 (16%)	24,24,24	1.00	1 (4%)
7	PGE	B	410	-	9,9,9	0.21	0	8,8,8	0.15	0
6	SO4	A	406	-	4,4,4	0.41	0	6,6,6	0.13	0
5	PEG	B	401	-	6,6,6	0.10	0	5,5,5	0.12	0

In the following table, the Chirals column lists the number of chiral outliers, the number of chiral centers analysed, the number of these observed in the model and the number defined in the Chemical Component Dictionary. Similar counts are reported in the Torsion and Rings columns. '2' means no outliers of that kind were identified.

Mol	Type	Chain	Res	Link	Chirals	Torsions	Rings
4	STL	B	404	-	-	5/5/5/5	0/2/2/2
4	STL	A	403	-	-	4/5/5/5	0/2/2/2
9	EDO	B	405	-	-	1/1/1/1	-
7	PGE	A	411	-	-	1/7/7/7	-
7	PGE	B	410	-	-	4/7/7/7	-
2	AR6	B	402	-	-	2/18/54/54	0/4/4/4
5	PEG	A	404	-	-	2/4/4/4	-
2	AR6	A	401	-	-	2/18/54/54	0/4/4/4
5	PEG	B	401	-	-	0/4/4/4	-

All (9) bond length outliers are listed below:

Mol	Chain	Res	Type	Atoms	Z	Observed(Å)	Ideal(Å)
4	A	403	STL	C2-C3	3.05	1.43	1.39
4	A	403	STL	C4-C3	3.02	1.43	1.39
4	A	403	STL	C6-C1	2.68	1.43	1.39
4	B	404	STL	C6-C5	2.61	1.44	1.39
4	A	403	STL	C4-C5	2.42	1.43	1.39

Continued on next page...

Continued from previous page...

Mol	Chain	Res	Type	Atoms	Z	Observed(Å)	Ideal(Å)
4	B	404	STL	C9-C8	-2.24	1.41	1.47
4	A	403	STL	C6-C5	2.05	1.43	1.39
4	B	404	STL	C4-C3	2.05	1.42	1.39
4	A	403	STL	C14-C13	2.01	1.42	1.38

All (4) bond angle outliers are listed below:

Mol	Chain	Res	Type	Atoms	Z	Observed(°)	Ideal(°)
4	A	403	STL	C3-C2-C1	2.72	122.46	119.20
4	B	404	STL	C5-C4-C3	2.42	122.44	120.28
2	A	401	AR6	O3D-C3D-C4D	2.22	117.46	111.05
2	B	402	AR6	C1'-N9-C4	-2.06	123.01	126.64

There are no chirality outliers.

All (21) torsion outliers are listed below:

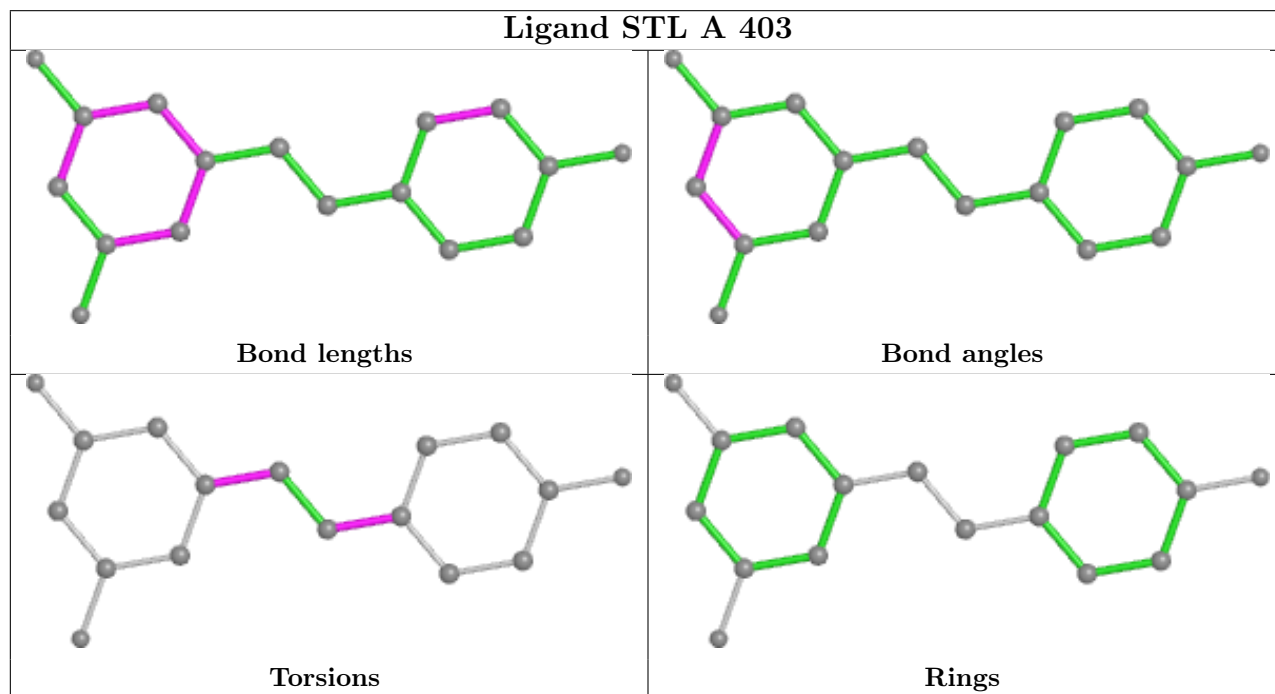
Mol	Chain	Res	Type	Atoms
4	A	403	STL	C6-C5-C7-C8
4	B	404	STL	C6-C5-C7-C8
4	A	403	STL	C4-C5-C7-C8
7	B	410	PGE	O2-C3-C4-O3
4	B	404	STL	C4-C5-C7-C8
5	A	404	PEG	O2-C3-C4-O4
7	B	410	PGE	O3-C5-C6-O4
7	A	411	PGE	O2-C3-C4-O3
4	B	404	STL	C7-C8-C9-C14
4	B	404	STL	C7-C8-C9-C10
2	A	401	AR6	O4'-C4'-C5'-O5'
5	A	404	PEG	O1-C1-C2-O2
9	B	405	EDO	O1-C1-C2-O2
7	B	410	PGE	O1-C1-C2-O2
2	B	402	AR6	O4'-C4'-C5'-O5'
4	A	403	STL	C7-C8-C9-C10
7	B	410	PGE	C6-C5-O3-C4
2	A	401	AR6	C5'-O5'-PA-O2A
2	B	402	AR6	C5D-O5D-PB-O2B
4	A	403	STL	C7-C8-C9-C14
4	B	404	STL	C5-C7-C8-C9

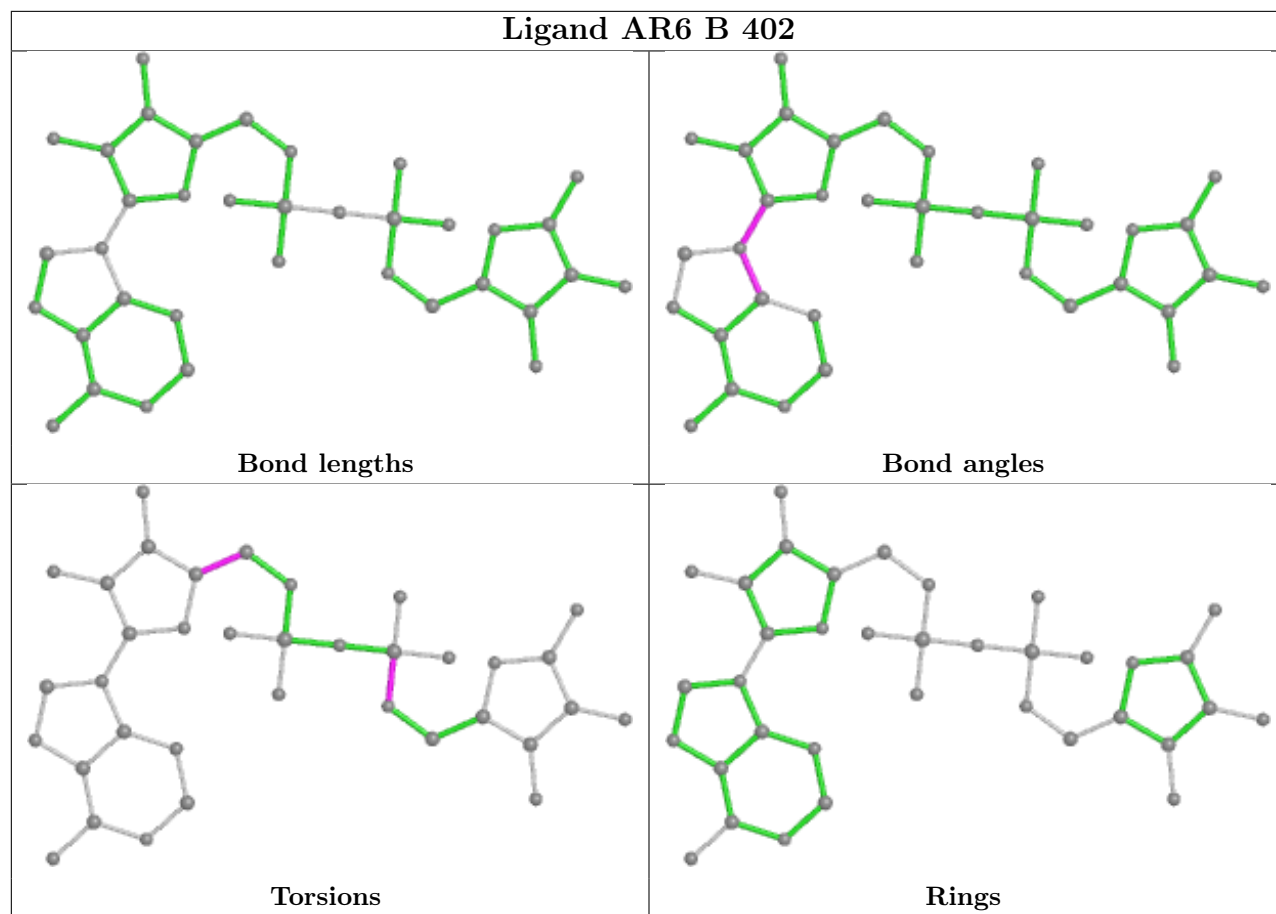
There are no ring outliers.

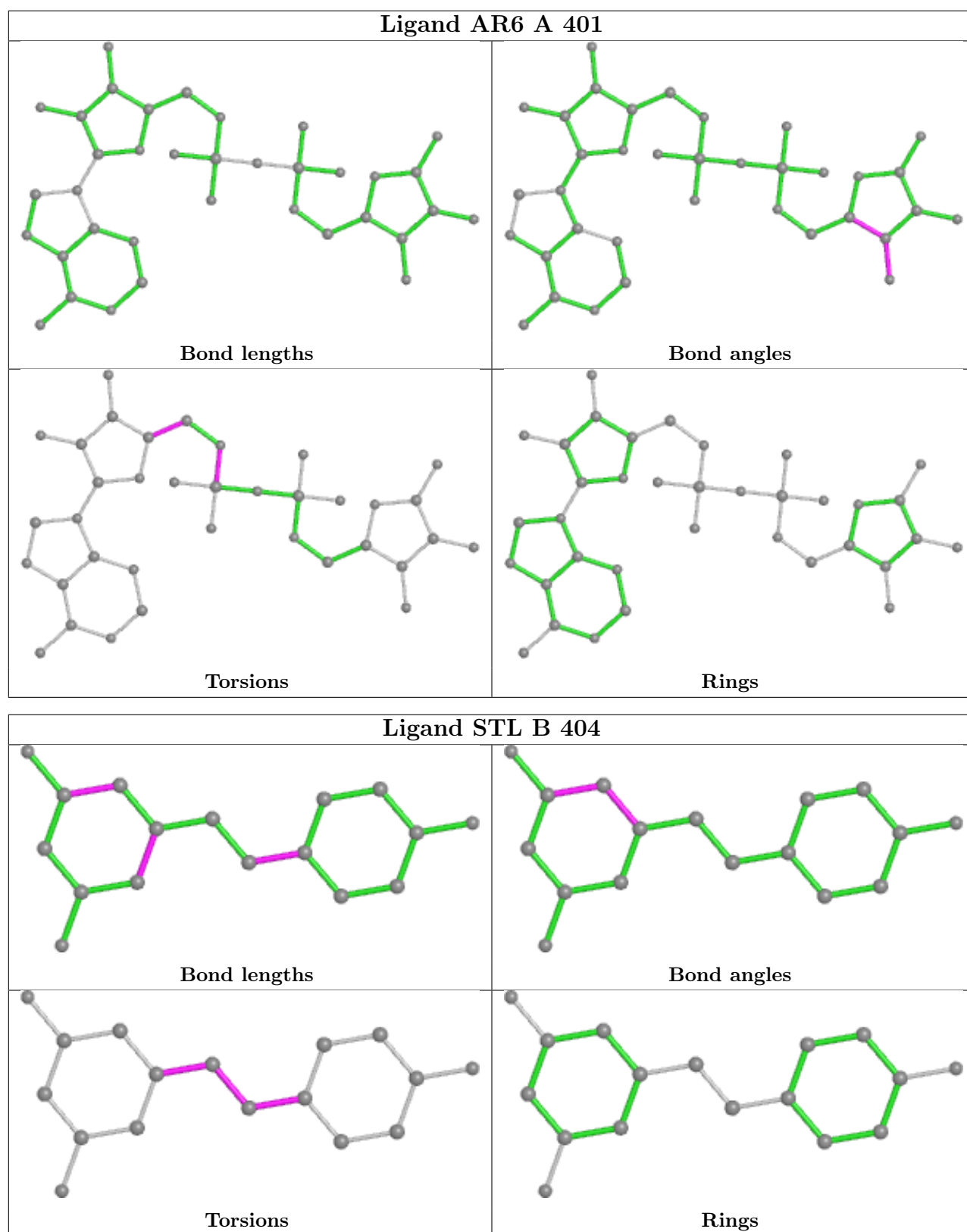
7 monomers are involved in 7 short contacts:

Mol	Chain	Res	Type	Clashes	Symm-Clashes
6	A	408	SO4	1	0
4	A	403	STL	1	0
6	A	407	SO4	1	0
6	B	407	SO4	1	0
6	B	408	SO4	1	0
6	A	405	SO4	1	0
4	B	404	STL	1	0

The following is a two-dimensional graphical depiction of Mogul quality analysis of bond lengths, bond angles, torsion angles, and ring geometry for all instances of the Ligand of Interest. In addition, ligands with molecular weight > 250 and outliers as shown on the validation Tables will also be included. For torsion angles, if less than 5% of the Mogul distribution of torsion angles is within 10 degrees of the torsion angle in question, then that torsion angle is considered an outlier. Any bond that is central to one or more torsion angles identified as an outlier by Mogul will be highlighted in the graph. For rings, the root-mean-square deviation (RMSD) between the ring in question and similar rings identified by Mogul is calculated over all ring torsion angles. If the average RMSD is greater than 60 degrees and the minimal RMSD between the ring in question and any Mogul-identified rings is also greater than 60 degrees, then that ring is considered an outlier. The outliers are highlighted in purple. The color gray indicates Mogul did not find sufficient equivalents in the CSD to analyse the geometry.







5.7 Other polymers [\(i\)](#)

There are no such residues in this entry.

5.8 Polymer linkage issues

There are no chain breaks in this entry.

6 Fit of model and data

6.1 Protein, DNA and RNA chains

In the following table, the column labelled ‘#RSRZ > 2’ contains the number (and percentage) of RSRZ outliers, followed by percent RSRZ outliers for the chain as percentile scores relative to all X-ray entries and entries of similar resolution. The OWAB column contains the minimum, median, 95th percentile and maximum values of the occupancy-weighted average B-factor per residue. The column labelled ‘Q < 0.9’ lists the number of (and percentage) of residues with an average occupancy less than 0.9.

Mol	Chain	Analysed	<RSRZ>	#RSRZ>2	OWAB(Å ²)	Q<0.9
1	A	282/302 (93%)	0.34	16 (5%) 23 22	22, 34, 56, 76	0
1	B	277/302 (91%)	0.49	23 (8%) 11 11	25, 40, 65, 90	0
All	All	559/604 (92%)	0.41	39 (6%) 16 16	22, 37, 62, 90	0

All (39) RSRZ outliers are listed below:

Mol	Chain	Res	Type	RSRZ
1	B	188	TRP	7.1
1	A	169	ALA	6.8
1	B	169	ALA	6.5
1	B	297	LEU	5.8
1	B	35	TRP	4.8
1	A	297	LEU	4.7
1	A	12	THR	4.5
1	A	10	PRO	4.3
1	B	168	VAL	4.2
1	B	232	ARG	4.2
1	B	298	GLU	4.1
1	B	277	ASP	4.0
1	B	178	ARG	3.6
1	B	189	GLU	3.4
1	A	277	ASP	3.4
1	A	35	TRP	3.4
1	A	189	GLU	3.3
1	A	165	LEU	3.2
1	B	233	GLY	3.2
1	A	298	GLU	3.1
1	B	15	LYS	3.0
1	B	76	ARG	3.0
1	A	231	ARG	3.0
1	B	16	GLY	3.0

Continued on next page...

Continued from previous page...

Mol	Chain	Res	Type	RSRZ
1	A	248	ARG	2.9
1	B	248	ARG	2.7
1	A	178	ARG	2.5
1	B	148	TYR	2.5
1	A	39	ARG	2.5
1	B	179	GLY	2.4
1	A	161	ALA	2.4
1	A	188	TRP	2.4
1	B	143	LYS	2.4
1	B	17	LYS	2.4
1	B	78	LEU	2.2
1	B	258	VAL	2.2
1	B	132	LEU	2.2
1	A	76	ARG	2.1
1	B	39	ARG	2.1

6.2 Non-standard residues in protein, DNA, RNA chains [i](#)

There are no non-standard protein/DNA/RNA residues in this entry.

6.3 Carbohydrates [i](#)

There are no monosaccharides in this entry.

6.4 Ligands [i](#)

In the following table, the Atoms column lists the number of modelled atoms in the group and the number defined in the chemical component dictionary. The B-factors column lists the minimum, median, 95th percentile and maximum values of B factors of atoms in the group. The column labelled 'Q< 0.9' lists the number of atoms with occupancy less than 0.9.

Mol	Type	Chain	Res	Atoms	RSCC	RSR	B-factors(Å ²)	Q<0.9
9	EDO	B	405	4/4	0.72	0.16	49,52,52,52	0
5	PEG	A	404	7/7	0.79	0.16	50,54,63,65	0
8	CL	A	415	1/1	0.83	0.08	54,54,54,54	0
7	PGE	B	410	10/10	0.83	0.13	56,59,61,66	0
7	PGE	A	411	10/10	0.84	0.12	52,57,61,67	0
8	CL	A	413	1/1	0.88	0.06	73,73,73,73	0
4	STL	A	403	17/17	0.91	0.14	27,34,48,49	0
4	STL	B	404	17/17	0.91	0.14	37,50,65,67	0

Continued on next page...

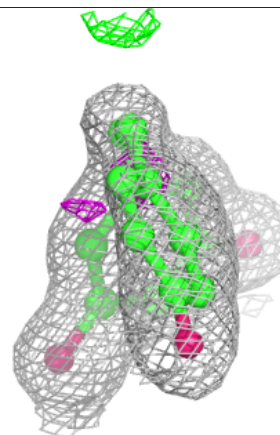
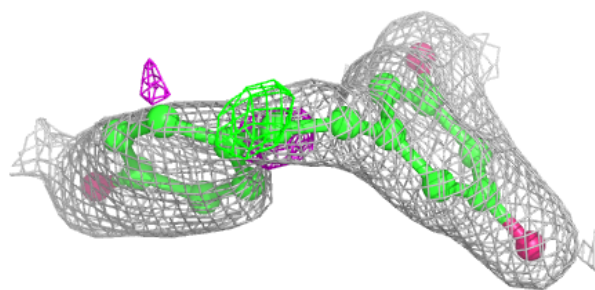
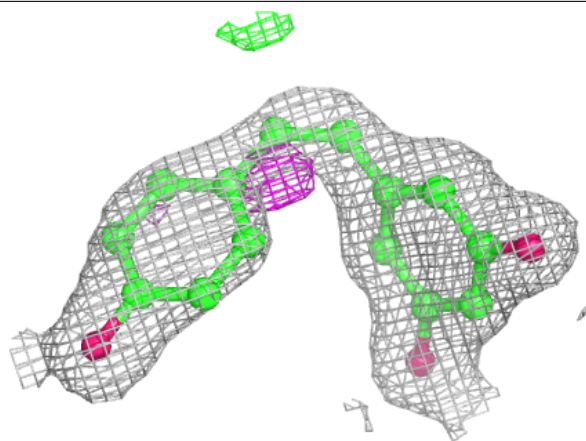
Continued from previous page...

Mol	Type	Chain	Res	Atoms	RSCC	RSR	B-factors(Å ²)	Q<0.9
6	SO4	B	407	5/5	0.92	0.23	70,74,75,80	0
5	PEG	B	401	7/7	0.92	0.07	40,46,50,54	0
8	CL	B	412	1/1	0.93	0.05	65,65,65,65	0
6	SO4	A	409	5/5	0.94	0.26	63,67,71,77	0
6	SO4	B	409	5/5	0.94	0.41	61,64,75,78	0
2	AR6	B	402	36/36	0.95	0.09	23,33,39,41	0
8	CL	B	413	1/1	0.95	0.06	60,60,60,60	0
8	CL	A	412	1/1	0.95	0.08	54,54,54,54	0
6	SO4	B	408	5/5	0.96	0.27	55,55,60,64	0
6	SO4	A	408	5/5	0.96	0.19	57,59,64,68	0
3	ZN	B	403	1/1	0.96	0.05	60,60,60,60	0
6	SO4	A	410	5/5	0.96	0.34	59,60,76,77	0
6	SO4	A	407	5/5	0.96	0.29	53,54,57,68	0
6	SO4	B	406	5/5	0.97	0.10	59,59,62,67	0
2	AR6	A	401	36/36	0.97	0.07	17,29,34,36	0
8	CL	A	414	1/1	0.98	0.06	60,60,60,60	0
3	ZN	A	402	1/1	0.98	0.06	51,51,51,51	0
8	CL	B	411	1/1	0.98	0.04	53,53,53,53	0
6	SO4	A	405	5/5	0.99	0.06	35,35,38,39	0
6	SO4	A	406	5/5	0.99	0.08	52,55,59,61	0

The following is a graphical depiction of the model fit to experimental electron density of all instances of the Ligand of Interest. In addition, ligands with molecular weight > 250 and outliers as shown on the geometry validation Tables will also be included. Each fit is shown from different orientation to approximate a three-dimensional view.

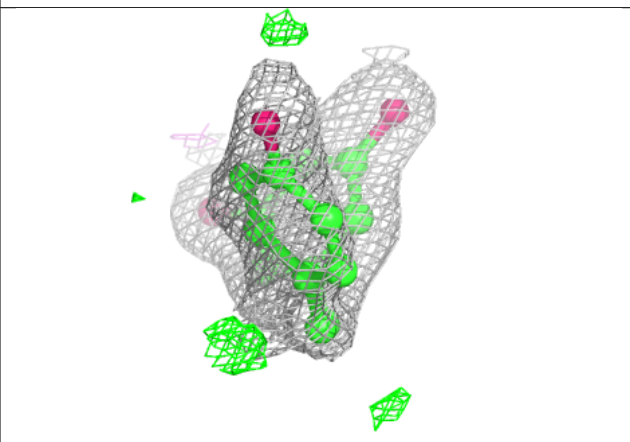
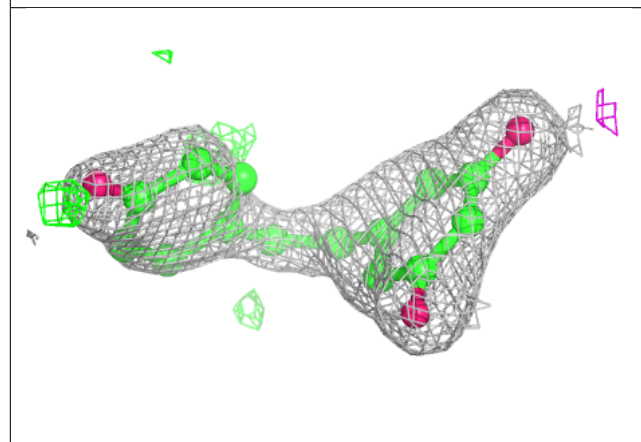
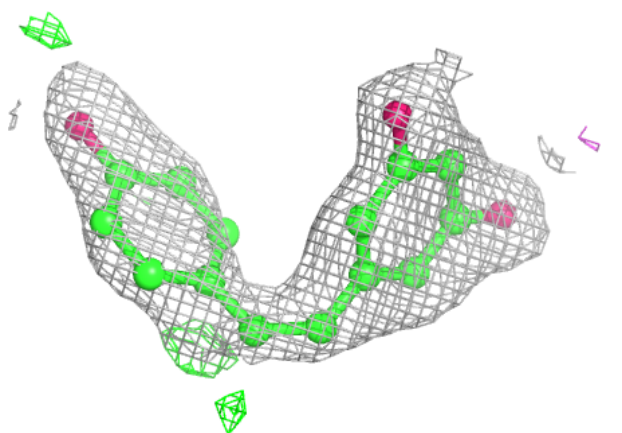
Electron density around STL A 403:

$2mF_o-DF_c$ (at 0.7 rmsd) in gray
 mF_o-DF_c (at 3 rmsd) in purple (negative)
and green (positive)

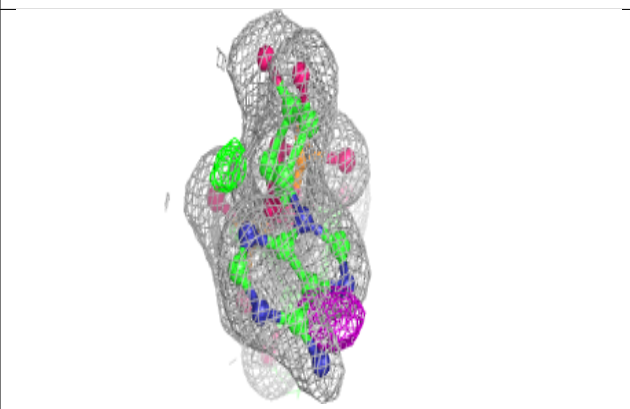
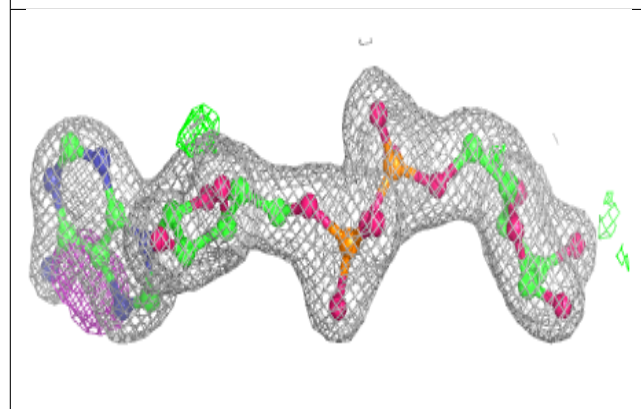
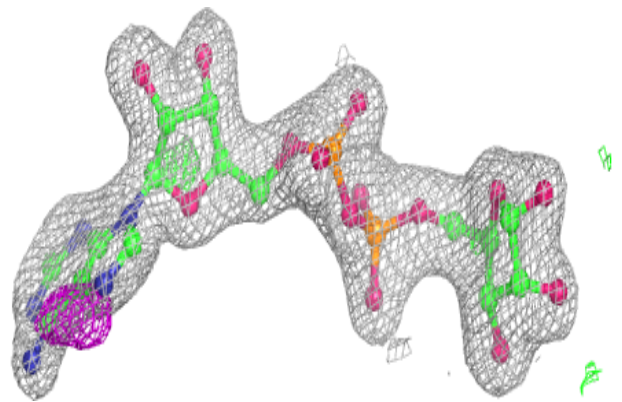


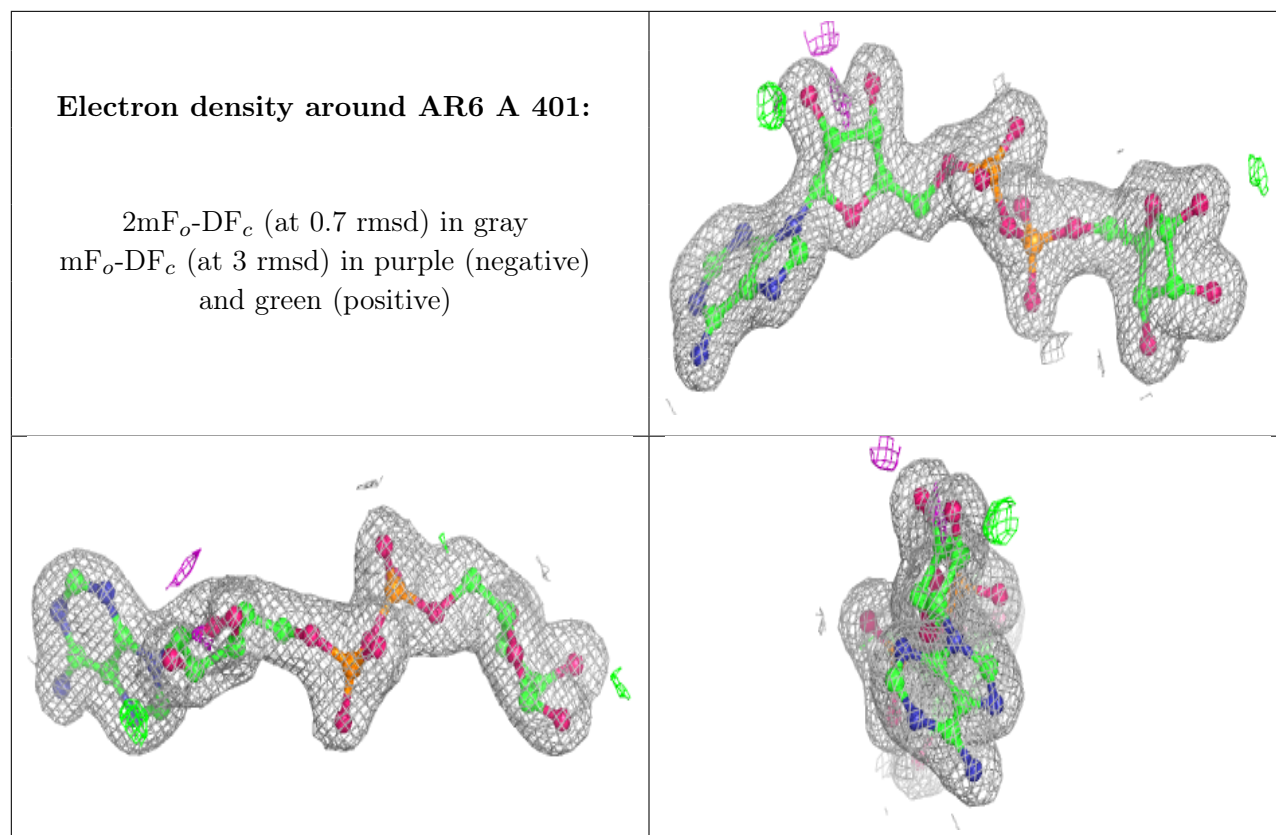
Electron density around STL B 404:

$2mF_o-DF_c$ (at 0.7 rmsd) in gray
 mF_o-DF_c (at 3 rmsd) in purple (negative)
and green (positive)

**Electron density around AR6 B 402:**

$2mF_o-DF_c$ (at 0.7 rmsd) in gray
 mF_o-DF_c (at 3 rmsd) in purple (negative)
and green (positive)





6.5 Other polymers [i](#)

There are no such residues in this entry.