



Full wwPDB X-ray Structure Validation Report ⓘ

Mar 9, 2018 – 03:52 am GMT

PDB ID : 4ALW
Title : Benzofuopyrimidinone Inhibitors of Pim-1
Authors : Stout, T.J.; Adams, L.
Deposited on : 2012-03-05
Resolution : 1.92 Å(reported)

This is a Full wwPDB X-ray Structure Validation Report for a publicly released PDB entry.

We welcome your comments at validation@mail.wwpdb.org

A user guide is available at

<https://www.wwpdb.org/validation/2017/XrayValidationReportHelp>

with specific help available everywhere you see the ⓘ symbol.

The following versions of software and data (see [references ⓘ](#)) were used in the production of this report:

MolProbity : 4.02b-467
Mogul : 1.7.3 (157068), CSD as539be (2018)
Xtriage (Phenix) : 1.13
EDS : trunk30967
Percentile statistics : 20171227.v01 (using entries in the PDB archive December 27th 2017)
Refmac : 5.8.0158
CCP4 : 7.0 (Gargrove)
Ideal geometry (proteins) : Engh & Huber (2001)
Ideal geometry (DNA, RNA) : Parkinson et al. (1996)
Validation Pipeline (wwPDB-VP) : trunk30967

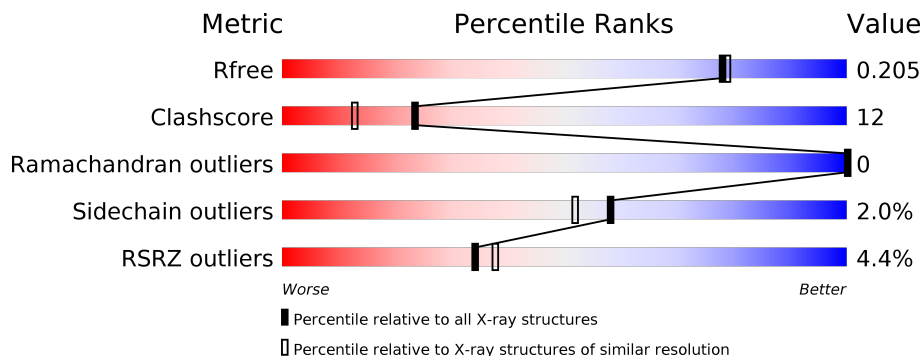
1 Overall quality at a glance

The following experimental techniques were used to determine the structure:

X-RAY DIFFRACTION

The reported resolution of this entry is 1.92 Å.

Percentile scores (ranging between 0-100) for global validation metrics of the entry are shown in the following graphic. The table shows the number of entries on which the scores are based.



Metric	Whole archive (#Entries)	Similar resolution (#Entries, resolution range(Å))
R_{free}	111664	6904 (1.94-1.90)
Clashscore	122126	7577 (1.94-1.90)
Ramachandran outliers	120053	7491 (1.94-1.90)
Sidechain outliers	120020	7491 (1.94-1.90)
RSRZ outliers	108989	6759 (1.94-1.90)

The table below summarises the geometric issues observed across the polymeric chains and their fit to the electron density. The red, orange, yellow and green segments on the lower bar indicate the fraction of residues that contain outliers for ≥ 3 , 2, 1 and 0 types of geometric quality criteria. A grey segment represents the fraction of residues that are not modelled. The numeric value for each fraction is indicated below the corresponding segment, with a dot representing fractions $\leq 5\%$. The upper red bar (where present) indicates the fraction of residues that have poor fit to the electron density. The numeric value is given above the bar.

Mol	Chain	Length	Quality of chain
1	A	328	

The following table lists non-polymeric compounds, carbohydrate monomers and non-standard residues in protein, DNA, RNA chains that are outliers for geometric or electron-density-fit criteria:

Mol	Type	Chain	Res	Chirality	Geometry	Clashes	Electron density
2	IMD	A	1309	-	-	X	-

2 Entry composition

There are 4 unique types of molecules in this entry. The entry contains 2633 atoms, of which 0 are hydrogens and 0 are deuteriums.

In the tables below, the ZeroOcc column contains the number of atoms modelled with zero occupancy, the AltConf column contains the number of residues with at least one atom in alternate conformation and the Trace column contains the number of residues modelled with at most 2 atoms.

- Molecule 1 is a protein called PIM-1 KINASE.

Mol	Chain	Residues	Atoms					ZeroOcc	AltConf	Trace
			Total	C	N	O	S			
1	A	273	2263	1447	398	410	8	0	8	0

There are 16 discrepancies between the modelled and reference sequences:

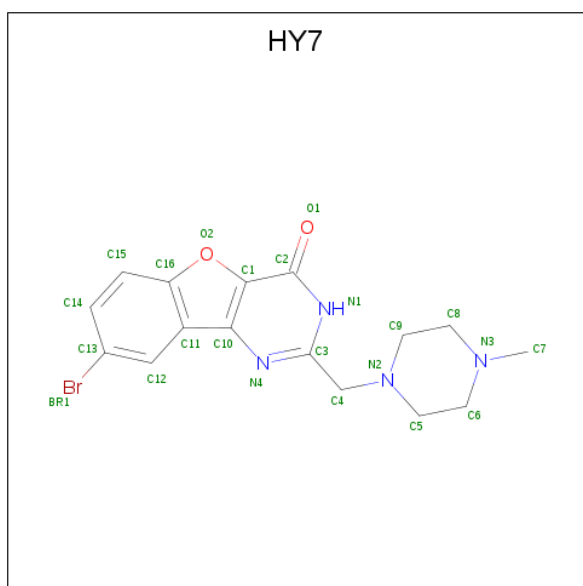
Chain	Residue	Modelled	Actual	Comment	Reference
A	-14	MET	-	expression tag	UNP P11309
A	-13	HIS	-	expression tag	UNP P11309
A	-12	HIS	-	expression tag	UNP P11309
A	-11	HIS	-	expression tag	UNP P11309
A	-10	HIS	-	expression tag	UNP P11309
A	-9	HIS	-	expression tag	UNP P11309
A	-8	HIS	-	expression tag	UNP P11309
A	-7	GLY	-	expression tag	UNP P11309
A	-6	GLU	-	expression tag	UNP P11309
A	-5	ASN	-	expression tag	UNP P11309
A	-4	LEU	-	expression tag	UNP P11309
A	-3	TYR	-	expression tag	UNP P11309
A	-2	PHE	-	expression tag	UNP P11309
A	-1	GLN	-	expression tag	UNP P11309
A	0	GLY	-	expression tag	UNP P11309
A	1	SER	-	expression tag	UNP P11309

- Molecule 2 is IMIDAZOLE (three-letter code: IMD) (formula: C₃H₅N₂).



Mol	Chain	Residues	Atoms	ZeroOcc	AltConf
2	A	1	Total C N 5 3 2	0	0
2	A	1	Total C N 5 3 2	0	0

- Molecule 3 is 8-BROMANYL-2-[(4-METHYLPIPERAZIN-1-YL)METHYL]-3H-[1]BENZOFURO[3,2-D]PYRIMIDIN-4-ONE (three-letter code: HY7) (formula: C₁₆H₁₇BrN₄O₂).



Mol	Chain	Residues	Atoms	ZeroOcc	AltConf
3	A	1	Total Br C N O 23 1 16 4 2	0	0

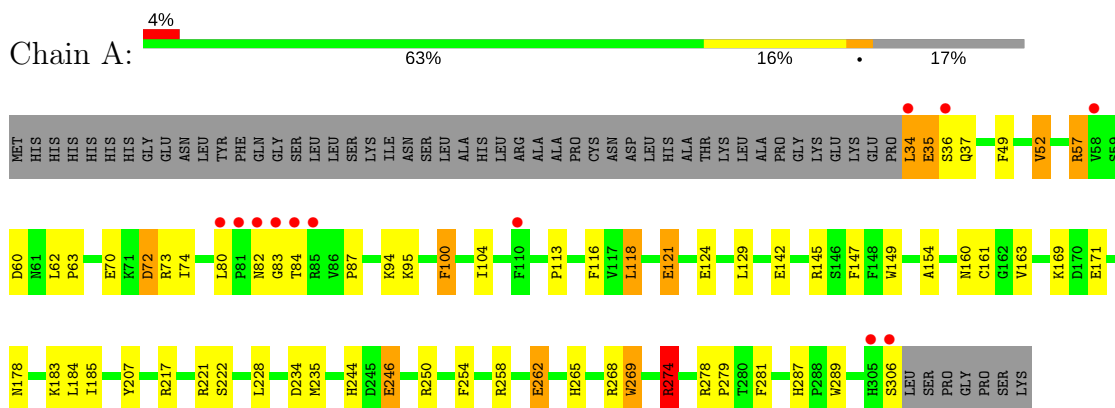
- Molecule 4 is water.

Mol	Chain	Residues	Atoms		ZeroOcc	AltConf
4	A	337	Total 337	O 337	0	0

3 Residue-property plots [i](#)

These plots are drawn for all protein, RNA and DNA chains in the entry. The first graphic for a chain summarises the proportions of the various outlier classes displayed in the second graphic. The second graphic shows the sequence view annotated by issues in geometry and electron density. Residues are color-coded according to the number of geometric quality criteria for which they contain at least one outlier: green = 0, yellow = 1, orange = 2 and red = 3 or more. A red dot above a residue indicates a poor fit to the electron density ($RSRZ > 2$). Stretches of 2 or more consecutive residues without any outlier are shown as a green connector. Residues present in the sample, but not in the model, are shown in grey.

- Molecule 1: PIM-1 KINASE



4 Data and refinement statistics i

Property	Value	Source
Space group	P 65	Depositor
Cell constants a, b, c, α , β , γ	97.45Å 97.45Å 81.00Å 90.00° 90.00° 120.00°	Depositor
Resolution (Å)	37.42 – 1.92 37.42 – 1.92	Depositor EDS
% Data completeness (in resolution range)	98.3 (37.42-1.92) 98.4 (37.42-1.92)	Depositor EDS
R_{merge}	0.07	Depositor
R_{sym}	(Not available)	Depositor
$\langle I/\sigma(I) \rangle$ ¹	1.17 (at 1.92Å)	Xtrriage
Refinement program	REFMAC 5.2.0019	Depositor
R, R_{free}	0.155 , 0.207 0.154 , 0.205	Depositor DCC
R_{free} test set	1670 reflections (5.08%)	wwPDB-VP
Wilson B-factor (Å ²)	33.1	Xtrriage
Anisotropy	0.104	Xtrriage
Bulk solvent k_{sol} (e/Å ³), B_{sol} (Å ²)	0.35 , 53.4	EDS
L-test for twinning ²	$\langle L \rangle = 0.48$, $\langle L^2 \rangle = 0.31$	Xtrriage
Estimated twinning fraction	0.049 for h,-h-k,-l	Xtrriage
F_o, F_c correlation	0.97	EDS
Total number of atoms	2633	wwPDB-VP
Average B, all atoms (Å ²)	37.0	wwPDB-VP

Xtrriage's analysis on translational NCS is as follows: *The largest off-origin peak in the Patterson function is 3.25% of the height of the origin peak. No significant pseudotranslation is detected.*

¹Intensities estimated from amplitudes.

²Theoretical values of $\langle |L| \rangle$, $\langle L^2 \rangle$ for acentric reflections are 0.5, 0.333 respectively for untwinned datasets, and 0.375, 0.2 for perfectly twinned datasets.

5 Model quality [i](#)

5.1 Standard geometry [i](#)

Bond lengths and bond angles in the following residue types are not validated in this section: IMD, HY7

The Z score for a bond length (or angle) is the number of standard deviations the observed value is removed from the expected value. A bond length (or angle) with $|Z| > 5$ is considered an outlier worth inspection. RMSZ is the root-mean-square of all Z scores of the bond lengths (or angles).

Mol	Chain	Bond lengths		Bond angles	
		RMSZ	# Z >5	RMSZ	# Z >5
1	A	1.48	18/2355 (0.8%)	1.18	15/3195 (0.5%)

Chiral center outliers are detected by calculating the chiral volume of a chiral center and verifying if the center is modelled as a planar moiety or with the opposite hand. A planarity outlier is detected by checking planarity of atoms in a peptide group, atoms in a mainchain group or atoms of a sidechain that are expected to be planar.

Mol	Chain	#Chirality outliers	#Planarity outliers
1	A	0	1

All (18) bond length outliers are listed below:

Mol	Chain	Res	Type	Atoms	Z	Observed(Å)	Ideal(Å)
1	A	262	GLU	CG-CD	7.98	1.64	1.51
1	A	262	GLU	CD-OE1	7.02	1.33	1.25
1	A	269	TRP	CG-CD1	6.59	1.46	1.36
1	A	281	PHE	CD1-CE1	6.44	1.52	1.39
1	A	147	PHE	CD1-CE1	6.29	1.51	1.39
1	A	207	TYR	CD1-CE1	6.06	1.48	1.39
1	A	52[A]	VAL	CB-CG2	-6.03	1.40	1.52
1	A	52[B]	VAL	CB-CG2	-6.03	1.40	1.52
1	A	100	PHE	CE1-CZ	5.81	1.48	1.37
1	A	121	GLU	CB-CG	-5.76	1.41	1.52
1	A	254	PHE	CD1-CE1	5.62	1.50	1.39
1	A	246	GLU	CG-CD	5.61	1.60	1.51
1	A	142	GLU	CG-CD	5.58	1.60	1.51
1	A	281	PHE	CE2-CZ	5.55	1.48	1.37
1	A	221	ARG	CG-CD	5.50	1.65	1.51
1	A	163	VAL	CB-CG2	5.43	1.64	1.52
1	A	149	TRP	CE3-CZ3	5.41	1.47	1.38
1	A	100	PHE	CD2-CE2	5.08	1.49	1.39

All (15) bond angle outliers are listed below:

Mol	Chain	Res	Type	Atoms	Z	Observed(°)	Ideal(°)
1	A	145	ARG	NE-CZ-NH1	8.71	124.66	120.30
1	A	57	ARG	NE-CZ-NH2	-7.85	116.38	120.30
1	A	250	ARG	NE-CZ-NH2	-7.59	116.50	120.30
1	A	268	ARG	NE-CZ-NH1	-7.48	116.56	120.30
1	A	145	ARG	NE-CZ-NH2	-7.21	116.70	120.30
1	A	57	ARG	NE-CZ-NH1	6.48	123.54	120.30
1	A	118	LEU	CB-CG-CD1	6.32	121.74	111.00
1	A	217	ARG	NE-CZ-NH2	-5.70	117.45	120.30
1	A	274	ARG	NE-CZ-NH1	5.66	123.13	120.30
1	A	169	LYS	CD-CE-NZ	-5.45	99.16	111.70
1	A	278	ARG	NE-CZ-NH2	-5.27	117.67	120.30
1	A	129	LEU	CB-CG-CD2	-5.26	102.05	111.00
1	A	235	MET	CG-SD-CE	5.21	108.54	100.20
1	A	171	GLU	CB-CA-C	-5.09	100.22	110.40
1	A	228	LEU	CA-CB-CG	-5.01	103.78	115.30

There are no chirality outliers.

All (1) planarity outliers are listed below:

Mol	Chain	Res	Type	Group
1	A	35	GLU	Peptide

5.2 Too-close contacts [i](#)

In the following table, the Non-H and H(model) columns list the number of non-hydrogen atoms and hydrogen atoms in the chain respectively. The H(added) column lists the number of hydrogen atoms added and optimized by MolProbity. The Clashes column lists the number of clashes within the asymmetric unit, whereas Symm-Clashes lists symmetry related clashes.

Mol	Chain	Non-H	H(model)	H(added)	Clashes	Symm-Clashes
1	A	2263	0	2220	55	0
2	A	10	0	10	7	0
3	A	23	0	17	1	0
4	A	337	0	0	11	3
All	All	2633	0	2247	55	3

The all-atom clashscore is defined as the number of clashes found per 1000 atoms (including hydrogen atoms). The all-atom clashscore for this structure is 12.

All (55) close contacts within the same asymmetric unit are listed below, sorted by their clash magnitude.

Atom-1	Atom-2	Interatomic distance (Å)	Clash overlap (Å)
1:A:222:SER:OG	2:A:1309:IMD:H2	1.15	1.26
1:A:222:SER:OG	2:A:1309:IMD:C2	2.03	1.07
1:A:36:SER:HA	4:A:2003:HOH:O	1.62	0.99
1:A:265:HIS:HD2	1:A:287:HIS:HE1	1.11	0.96
1:A:222:SER:CB	2:A:1309:IMD:H2	1.97	0.94
1:A:274:ARG:HH11	1:A:274:ARG:HB3	1.32	0.93
1:A:287:HIS:HD2	1:A:289:TRP:H	1.11	0.91
1:A:287:HIS:CD2	1:A:289:TRP:H	1.89	0.91
1:A:57:ARG:HD2	1:A:60:ASP:OD1	1.73	0.87
1:A:265:HIS:CD2	1:A:287:HIS:HE1	1.93	0.86
1:A:124:GLU:HG2	4:A:2120:HOH:O	1.78	0.83
1:A:70:GLU:HG3	1:A:73[A]:ARG:NH1	1.99	0.78
1:A:104[B]:ILE:HG13	1:A:184:LEU:O	1.84	0.78
1:A:265:HIS:HD2	1:A:287:HIS:CE1	1.99	0.77
1:A:84:THR:HA	4:A:2069:HOH:O	1.87	0.74
1:A:72:ASP:OD1	1:A:72:ASP:N	2.15	0.73
1:A:244:HIS:HB3	1:A:246:GLU:OE1	1.94	0.67
1:A:222:SER:CB	2:A:1309:IMD:C2	2.68	0.67
1:A:274:ARG:HH11	1:A:274:ARG:CB	2.07	0.66
1:A:222:SER:H	2:A:1309:IMD:C2	2.09	0.66
1:A:113:PRO:HB2	4:A:2108:HOH:O	1.97	0.65
1:A:72:ASP:OD1	4:A:2047:HOH:O	2.14	0.65
1:A:34:LEU:O	1:A:37:GLN:HG3	1.97	0.64
1:A:160[A]:ASN:ND2	4:A:2182:HOH:O	2.31	0.63
1:A:287:HIS:HD2	1:A:289:TRP:N	1.92	0.59
1:A:104[B]:ILE:HG12	1:A:185:ILE:HA	1.85	0.59
1:A:121:GLU:OE2	1:A:183:LYS:HE2	2.04	0.57
1:A:57:ARG:CD	1:A:60:ASP:OD1	2.50	0.57
1:A:222:SER:H	2:A:1309:IMD:H2	1.70	0.57
1:A:178:ASN:HA	1:A:306:SER:HB3	1.86	0.56
1:A:104[B]:ILE:CG1	1:A:185:ILE:HA	2.35	0.56
1:A:70:GLU:CG	1:A:73[A]:ARG:NH1	2.70	0.55
1:A:63:PRO:HG2	4:A:2118:HOH:O	2.07	0.54
1:A:35:GLU:N	1:A:35:GLU:OE1	2.42	0.53
1:A:87:PRO:HD3	1:A:116:PHE:CE1	2.44	0.52
1:A:234:ASP:OD1	2:A:1307:IMD:H2	2.09	0.51
1:A:104[B]:ILE:HG12	1:A:185:ILE:HG22	1.92	0.51
1:A:94:LYS:NZ	4:A:2082:HOH:O	2.44	0.50
1:A:49:PHE:CE1	3:A:1308:HY7:H52C	2.46	0.50
1:A:62:LEU:HD12	1:A:63:PRO:HD2	1.94	0.49
1:A:74:ILE:HD13	1:A:87:PRO:HG3	1.95	0.48
1:A:246:GLU:CD	1:A:246:GLU:H	2.18	0.47

Continued on next page...

Continued from previous page...

Atom-1	Atom-2	Interatomic distance (Å)	Clash overlap (Å)
1:A:121:GLU:CD	1:A:183:LYS:HE2	2.35	0.46
1:A:262:GLU:HG3	4:A:2284:HOH:O	2.16	0.45
1:A:82:ASN:ND2	4:A:2068:HOH:O	2.47	0.45
1:A:70:GLU:HG3	1:A:73[A]:ARG:HH12	1.75	0.44
1:A:80:LEU:O	1:A:83:GLY:HA2	2.18	0.43
1:A:306:SER:HA	4:A:2332:HOH:O	2.18	0.43
1:A:269:TRP:CD1	1:A:279:PRO:HD3	2.53	0.43
1:A:74:ILE:CD1	1:A:87:PRO:HG3	2.50	0.41
1:A:104[A]:ILE:HD12	1:A:183:LYS:HD3	2.02	0.41
1:A:100:PHE:HE2	1:A:154:ALA:HA	1.85	0.40
1:A:95:LYS:HE3	1:A:161:CYS:O	2.22	0.40

All (3) symmetry-related close contacts are listed below. The label for Atom-2 includes the symmetry operator and encoded unit-cell translations to be applied.

Atom-1	Atom-2	Interatomic distance (Å)	Clash overlap (Å)
4:A:2277:HOH:O	4:A:2325:HOH:O[3_655]	1.99	0.21
4:A:2078:HOH:O	4:A:2289:HOH:O[2_544]	2.13	0.07
4:A:2114:HOH:O	4:A:2270:HOH:O[2_544]	2.19	0.01

5.3 Torsion angles [i](#)

5.3.1 Protein backbone [i](#)

In the following table, the Percentiles column shows the percent Ramachandran outliers of the chain as a percentile score with respect to all X-ray entries followed by that with respect to entries of similar resolution.

The Analysed column shows the number of residues for which the backbone conformation was analysed, and the total number of residues.

Mol	Chain	Analysed	Favoured	Allowed	Outliers	Percentiles
1	A	279/328 (85%)	272 (98%)	7 (2%)	0	100 100

There are no Ramachandran outliers to report.

5.3.2 Protein sidechains [i](#)

In the following table, the Percentiles column shows the percent sidechain outliers of the chain as a percentile score with respect to all X-ray entries followed by that with respect to entries of similar

resolution.

The Analysed column shows the number of residues for which the sidechain conformation was analysed, and the total number of residues.

Mol	Chain	Analysed	Rotameric	Outliers	Percentiles
1	A	252/290 (87%)	246 (98%)	6 (2%)	52 44

All (6) residues with a non-rotameric sidechain are listed below:

Mol	Chain	Res	Type
1	A	34	LEU
1	A	52[A]	VAL
1	A	52[B]	VAL
1	A	72	ASP
1	A	118	LEU
1	A	274	ARG

Some sidechains can be flipped to improve hydrogen bonding and reduce clashes. All (4) such sidechains are listed below:

Mol	Chain	Res	Type
1	A	216	HIS
1	A	252	GLN
1	A	265	HIS
1	A	287	HIS

5.3.3 RNA [i](#)

There are no RNA molecules in this entry.

5.4 Non-standard residues in protein, DNA, RNA chains [i](#)

There are no non-standard protein/DNA/RNA residues in this entry.

5.5 Carbohydrates [i](#)

There are no carbohydrates in this entry.

5.6 Ligand geometry [i](#)

3 ligands are modelled in this entry.

In the following table, the Counts columns list the number of bonds (or angles) for which Mogul statistics could be retrieved, the number of bonds (or angles) that are observed in the model and the number of bonds (or angles) that are defined in the Chemical Component Dictionary. The Link column lists molecule types, if any, to which the group is linked. The Z score for a bond length (or angle) is the number of standard deviations the observed value is removed from the expected value. A bond length (or angle) with $|Z| > 2$ is considered an outlier worth inspection. RMSZ is the root-mean-square of all Z scores of the bond lengths (or angles).

Mol	Type	Chain	Res	Link	Bond lengths			Bond angles		
					Counts	RMSZ	# Z > 2	Counts	RMSZ	# Z > 2
2	IMD	A	1307	-	3,5,5	0.32	0	4,5,5	1.34	0
3	HY7	A	1308	-	20,26,26	1.41	2 (10%)	20,38,38	3.90	12 (60%)
2	IMD	A	1309	-	3,5,5	0.36	0	4,5,5	0.43	0

In the following table, the Chirals column lists the number of chiral outliers, the number of chiral centers analysed, the number of these observed in the model and the number defined in the Chemical Component Dictionary. Similar counts are reported in the Torsion and Rings columns. '2' means no outliers of that kind were identified.

Mol	Type	Chain	Res	Link	Chirals	Torsions	Rings
2	IMD	A	1307	-	-	0/0/0/0	0/1/1/1
3	HY7	A	1308	-	-	0/4/14/14	0/4/4/4
2	IMD	A	1309	-	-	0/0/0/0	0/1/1/1

All (2) bond length outliers are listed below:

Mol	Chain	Res	Type	Atoms	Z	Observed(Å)	Ideal(Å)
3	A	1308	HY7	C3-N4	-3.00	1.29	1.33
3	A	1308	HY7	C14-C13	2.33	1.43	1.38

All (12) bond angle outliers are listed below:

Mol	Chain	Res	Type	Atoms	Z	Observed(°)	Ideal(°)
3	A	1308	HY7	C13-C12-C11	-8.11	112.37	120.13
3	A	1308	HY7	C7-N3-C8	-5.59	102.32	110.67
3	A	1308	HY7	C1-C2-N1	-5.44	115.78	122.33
3	A	1308	HY7	N4-C3-N1	-3.64	121.27	126.11
3	A	1308	HY7	C9-C8-N3	-3.27	107.08	110.80
3	A	1308	HY7	BR1-C13-C14	-3.18	114.61	119.30
3	A	1308	HY7	C5-C6-N3	-3.16	107.21	110.80
3	A	1308	HY7	C8-C9-N2	-2.82	105.09	110.64
3	A	1308	HY7	C9-N2-C5	3.50	116.60	108.87
3	A	1308	HY7	C8-N3-C6	4.34	115.72	109.53
3	A	1308	HY7	C14-C13-C12	6.00	128.03	121.96

Continued on next page...

Continued from previous page...

Mol	Chain	Res	Type	Atoms	Z	Observed($^{\circ}$)	Ideal($^{\circ}$)
3	A	1308	HY7	C3-N4-C10	7.15	121.42	115.32

There are no chirality outliers.

There are no torsion outliers.

There are no ring outliers.

3 monomers are involved in 8 short contacts:

Mol	Chain	Res	Type	Clashes	Symm-Clashes
2	A	1307	IMD	1	0
3	A	1308	HY7	1	0
2	A	1309	IMD	6	0

5.7 Other polymers [i](#)

There are no such residues in this entry.

5.8 Polymer linkage issues [i](#)

There are no chain breaks in this entry.

6 Fit of model and data [i](#)

6.1 Protein, DNA and RNA chains [i](#)

In the following table, the column labelled ‘#RSRZ> 2’ contains the number (and percentage) of RSRZ outliers, followed by percent RSRZ outliers for the chain as percentile scores relative to all X-ray entries and entries of similar resolution. The OWAB column contains the minimum, median, 95th percentile and maximum values of the occupancy-weighted average B-factor per residue. The column labelled ‘Q< 0.9’ lists the number of (and percentage) of residues with an average occupancy less than 0.9.

Mol	Chain	Analysed	<RSRZ>	#RSRZ>2	OWAB(Å ²)	Q<0.9
1	A	273/328 (83%)	-0.01	12 (4%) 34 38	20, 32, 63, 85	0

All (12) RSRZ outliers are listed below:

Mol	Chain	Res	Type	RSRZ
1	A	81	PRO	6.3
1	A	84	THR	5.8
1	A	80	LEU	5.2
1	A	306	SER	5.0
1	A	305[A]	HIS	4.6
1	A	82	ASN	4.2
1	A	83	GLY	3.3
1	A	34	LEU	3.3
1	A	36	SER	2.7
1	A	110	PHE	2.5
1	A	85	ARG	2.5
1	A	58	VAL	2.3

6.2 Non-standard residues in protein, DNA, RNA chains [i](#)

There are no non-standard protein/DNA/RNA residues in this entry.

6.3 Carbohydrates [i](#)

There are no carbohydrates in this entry.

6.4 Ligands [i](#)

In the following table, the Atoms column lists the number of modelled atoms in the group and the number defined in the chemical component dictionary. The B-factors column lists the minimum,

median, 95th percentile and maximum values of B factors of atoms in the group. The column labelled 'Q< 0.9' lists the number of atoms with occupancy less than 0.9.

Mol	Type	Chain	Res	Atoms	RSCC	RSR	B-factors(\AA^2)	Q<0.9
2	IMD	A	1309	5/5	0.97	0.10	29,35,43,44	0
3	HY7	A	1308	23/23	0.97	0.07	25,29,33,44	0
2	IMD	A	1307	5/5	0.99	0.06	39,42,44,44	0

6.5 Other polymers [i](#)

There are no such residues in this entry.