



Full wwPDB X-ray Structure Validation Report ⓘ

Mar 10, 2018 – 08:43 am GMT

PDB ID : 4APU
Title : PR X-Ray structures in agonist conformations reveal two different mechanisms for partial agonism in 11beta-substituted steroids
Authors : Lusher, S.J.; Raaijmakers, H.C.A.; Bosch, R.; Vu-Pham, D.; McGuire, R.; Oubrie, A.; de Vlieg, J.
Deposited on : 2012-04-06
Resolution : 1.90 Å(reported)

This is a Full wwPDB X-ray Structure Validation Report for a publicly released PDB entry.

We welcome your comments at validation@mail.wwpdb.org

A user guide is available at

<https://www.wwpdb.org/validation/2017/XrayValidationReportHelp>

with specific help available everywhere you see the ⓘ symbol.

The following versions of software and data (see [references ⓘ](#)) were used in the production of this report:

MolProbity : 4.02b-467
Mogul : 1.7.3 (157068), CSD as539be (2018)
Xtrriage (Phenix) : 1.13
EDS : trunk30967
Percentile statistics : 20171227.v01 (using entries in the PDB archive December 27th 2017)
Refmac : 5.8.0158
CCP4 : 7.0 (Gargrove)
Ideal geometry (proteins) : Engh & Huber (2001)
Ideal geometry (DNA, RNA) : Parkinson et al. (1996)
Validation Pipeline (wwPDB-VP) : trunk30967

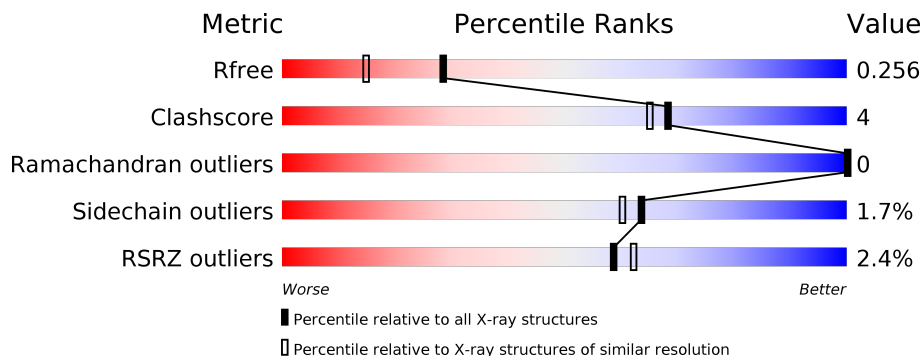
1 Overall quality at a glance

The following experimental techniques were used to determine the structure:

X-RAY DIFFRACTION

The reported resolution of this entry is 1.90 Å.

Percentile scores (ranging between 0-100) for global validation metrics of the entry are shown in the following graphic. The table shows the number of entries on which the scores are based.



Metric	Whole archive (#Entries)	Similar resolution (#Entries, resolution range(Å))
R_{free}	111664	5502 (1.90-1.90)
Clashscore	122126	6115 (1.90-1.90)
Ramachandran outliers	120053	6048 (1.90-1.90)
Sidechain outliers	120020	6048 (1.90-1.90)
RSRZ outliers	108989	5379 (1.90-1.90)

The table below summarises the geometric issues observed across the polymeric chains and their fit to the electron density. The red, orange, yellow and green segments on the lower bar indicate the fraction of residues that contain outliers for ≥ 3 , 2, 1 and 0 types of geometric quality criteria. A grey segment represents the fraction of residues that are not modelled. The numeric value for each fraction is indicated below the corresponding segment, with a dot representing fractions $\leq 5\%$. The upper red bar (where present) indicates the fraction of residues that have poor fit to the electron density. The numeric value is given above the bar.

Mol	Chain	Length	Quality of chain
1	A	260	 3% 88% 8% .
1	B	260	 2% 90% 5% . .

2 Entry composition

There are 5 unique types of molecules in this entry. The entry contains 4277 atoms, of which 0 are hydrogens and 0 are deuteriums.

In the tables below, the ZeroOcc column contains the number of atoms modelled with zero occupancy, the AltConf column contains the number of residues with at least one atom in alternate conformation and the Trace column contains the number of residues modelled with at most 2 atoms.

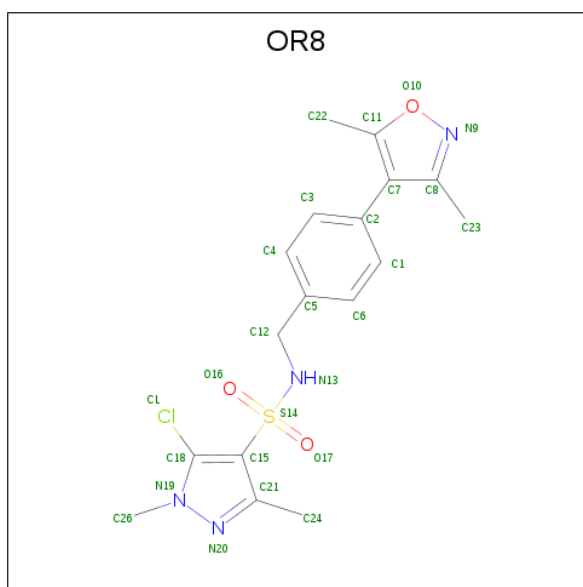
- Molecule 1 is a protein called PROGESTERONE RECEPTOR.

Mol	Chain	Residues	Atoms					ZeroOcc	AltConf	Trace
			Total	C	N	O	S			
1	A	250	2026	1313	335	364	14	0	2	0
1	B	250	2021	1311	335	361	14	0	0	0

There are 8 discrepancies between the modelled and reference sequences:

Chain	Residue	Modelled	Actual	Comment	Reference
A	674	GLY	-	expression tag	UNP P06401
A	675	SER	-	expression tag	UNP P06401
A	676	HIS	-	expression tag	UNP P06401
A	677	MET	-	expression tag	UNP P06401
B	674	GLY	-	expression tag	UNP P06401
B	675	SER	-	expression tag	UNP P06401
B	676	HIS	-	expression tag	UNP P06401
B	677	MET	-	expression tag	UNP P06401

- Molecule 2 is 2-CHLORO-N-[[4-(3,5-DIMETHYLISOXAZOL-4-YL)PHENYL]METHYL]-1,4-DIMETHYL-1H-PYRAZOLE-4-SULFONAMIDE (three-letter code: OR8) (formula: C₁₇H₁₉ClN₄O₃S).



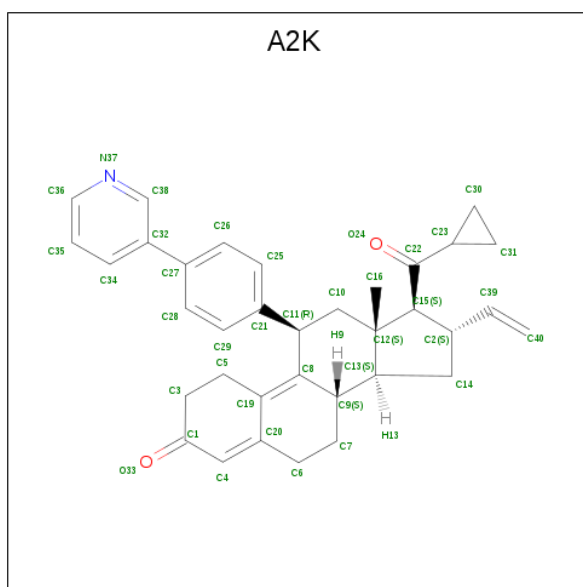
Mol	Chain	Residues	Atoms					ZeroOcc	AltConf	
			Total	C	Cl	N	O			S
2	A	1	26	17	1	4	3	1	0	0

- Molecule 3 is SULFATE ION (three-letter code: SO4) (formula: O₄S).



Mol	Chain	Residues	Atoms		ZeroOcc	AltConf
			Total	O S		
3	A	1	5	4 1	0	0

- Molecule 4 is (8S,11R,13S,14S,16S,17S)-17-cyclopropylcarbonyl-16-ethenyl-13-methyl-11-(4-pyridin-3-ylphenyl)-2,6,7,8,11,12,14,15,16,17-decahydro-1H-cyclopenta[a]phenanthren-3-one (three-letter code: A2K) (formula: C₃₅H₃₇NO₂).



Mol	Chain	Residues	Atoms				ZeroOcc	AltConf
			Total	C	N	O		
4	B	1	38	35	1	2	0	0

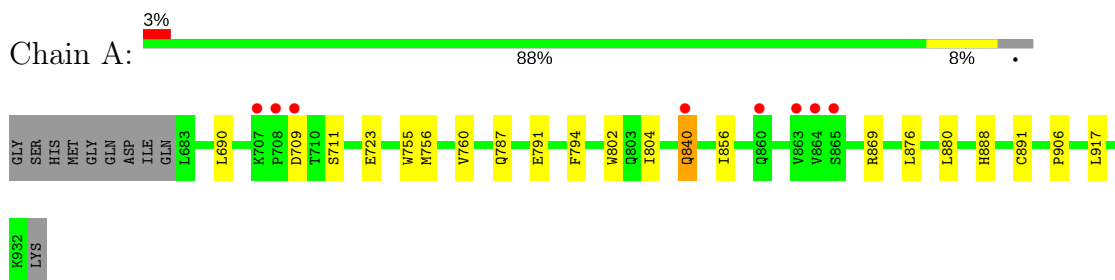
- Molecule 5 is water.

Mol	Chain	Residues	Atoms		ZeroOcc	AltConf
5	A	78	Total	O	0	0
			78	78		
5	B	83	Total	O	0	0
			83	83		

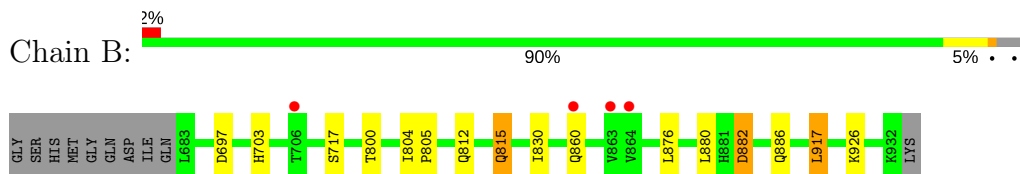
3 Residue-property plots [i](#)

These plots are drawn for all protein, RNA and DNA chains in the entry. The first graphic for a chain summarises the proportions of the various outlier classes displayed in the second graphic. The second graphic shows the sequence view annotated by issues in geometry and electron density. Residues are color-coded according to the number of geometric quality criteria for which they contain at least one outlier: green = 0, yellow = 1, orange = 2 and red = 3 or more. A red dot above a residue indicates a poor fit to the electron density ($RSRZ > 2$). Stretches of 2 or more consecutive residues without any outlier are shown as a green connector. Residues present in the sample, but not in the model, are shown in grey.

- Molecule 1: PROGESTERONE RECEPTOR



- Molecule 1: PROGESTERONE RECEPTOR



4 Data and refinement statistics

Property	Value	Source
Space group	P 1 21 1	Depositor
Cell constants a, b, c, α , β , γ	57.66Å 64.37Å 70.47Å 90.00° 96.33° 90.00°	Depositor
Resolution (Å)	70.04 – 1.90 42.80 – 1.90	Depositor EDS
% Data completeness (in resolution range)	99.9 (70.04-1.90) 100.0 (42.80-1.90)	Depositor EDS
R_{merge}	0.08	Depositor
R_{sym}	(Not available)	Depositor
$\langle I/\sigma(I) \rangle$ ¹	1.87 (at 1.89Å)	Xtrriage
Refinement program	REFMAC 5.6.0117	Depositor
R, R_{free}	0.205 , 0.252 0.205 , 0.256	Depositor DCC
R_{free} test set	2126 reflections (5.24%)	wwPDB-VP
Wilson B-factor (Å ²)	34.5	Xtrriage
Anisotropy	0.196	Xtrriage
Bulk solvent k_{sol} (e/Å ³), B_{sol} (Å ²)	0.36 , 43.5	EDS
L-test for twinning ²	$\langle L \rangle = 0.49$, $\langle L^2 \rangle = 0.32$	Xtrriage
Estimated twinning fraction	No twinning to report.	Xtrriage
F_o, F_c correlation	0.97	EDS
Total number of atoms	4277	wwPDB-VP
Average B, all atoms (Å ²)	42.0	wwPDB-VP

Xtrriage's analysis on translational NCS is as follows: *The largest off-origin peak in the Patterson function is 7.27% of the height of the origin peak. No significant pseudotranslation is detected.*

¹Intensities estimated from amplitudes.

²Theoretical values of $\langle |L| \rangle$, $\langle L^2 \rangle$ for acentric reflections are 0.5, 0.333 respectively for untwinned datasets, and 0.375, 0.2 for perfectly twinned datasets.

5 Model quality [i](#)

5.1 Standard geometry [i](#)

Bond lengths and bond angles in the following residue types are not validated in this section: A2K, SO4, OR8

The Z score for a bond length (or angle) is the number of standard deviations the observed value is removed from the expected value. A bond length (or angle) with $|Z| > 5$ is considered an outlier worth inspection. RMSZ is the root-mean-square of all Z scores of the bond lengths (or angles).

Mol	Chain	Bond lengths		Bond angles	
		RMSZ	# Z >5	RMSZ	# Z >5
1	A	0.58	1/2077 (0.0%)	0.67	0/2809
1	B	0.56	0/2064	0.65	0/2792
All	All	0.57	1/4141 (0.0%)	0.66	0/5601

Chiral center outliers are detected by calculating the chiral volume of a chiral center and verifying if the center is modelled as a planar moiety or with the opposite hand. A planarity outlier is detected by checking planarity of atoms in a peptide group, atoms in a mainchain group or atoms of a sidechain that are expected to be planar.

Mol	Chain	#Chirality outliers	#Planarity outliers
1	A	0	1

All (1) bond length outliers are listed below:

Mol	Chain	Res	Type	Atoms	Z	Observed(Å)	Ideal(Å)
1	A	755	TRP	CD2-CE2	5.53	1.48	1.41

There are no bond angle outliers.

There are no chirality outliers.

All (1) planarity outliers are listed below:

Mol	Chain	Res	Type	Group
1	A	709	ASP	Peptide

5.2 Too-close contacts [i](#)

In the following table, the Non-H and H(model) columns list the number of non-hydrogen atoms and hydrogen atoms in the chain respectively. The H(added) column lists the number of hydrogen atoms added and optimized by MolProbity. The Clashes column lists the number of clashes within

the asymmetric unit, whereas Symm-Clashes lists symmetry related clashes.

Mol	Chain	Non-H	H(model)	H(added)	Clashes	Symm-Clashes
1	A	2026	0	2082	19	0
1	B	2021	0	2080	14	0
2	A	26	0	19	5	0
3	A	5	0	0	0	0
4	B	38	0	37	2	0
5	A	78	0	0	0	0
5	B	83	0	0	1	0
All	All	4277	0	4218	34	0

The all-atom clashscore is defined as the number of clashes found per 1000 atoms (including hydrogen atoms). The all-atom clashscore for this structure is 4.

All (34) close contacts within the same asymmetric unit are listed below, sorted by their clash magnitude.

Atom-1	Atom-2	Interatomic distance (Å)	Clash overlap (Å)
1:A:760:VAL:HG22	1:A:804:ILE:HD12	1.55	0.86
1:B:815:GLN:NE2	5:B:2006:HOH:O	2.24	0.69
1:A:804:ILE:HD11	1:A:880:LEU:HD21	1.75	0.69
1:A:804:ILE:CD1	1:A:880:LEU:HD21	2.23	0.68
1:B:804:ILE:CD1	1:B:880:LEU:HD11	2.27	0.65
1:A:756:MET:CE	2:A:1933:OR8:H243	2.31	0.61
1:A:756:MET:SD	2:A:1933:OR8:H243	2.41	0.60
1:A:804:ILE:HD11	1:A:880:LEU:CD2	2.31	0.59
1:B:804:ILE:HD12	1:B:880:LEU:HD11	1.86	0.56
1:A:888:HIS:CD2	1:A:917:LEU:HD11	2.41	0.56
1:A:891:CYS:HB2	2:A:1933:OR8:H241	1.90	0.52
4:B:1933:A2K:H162	4:B:1933:A2K:C21	2.39	0.52
1:B:804:ILE:HB	1:B:805:PRO:HD3	1.93	0.51
1:A:690:LEU:C	1:A:690:LEU:HD23	2.32	0.49
1:B:876:LEU:HD23	1:B:876:LEU:C	2.32	0.49
1:A:891:CYS:HA	2:A:1933:OR8:O16	2.13	0.48
1:B:804:ILE:HD11	1:B:880:LEU:HD11	1.93	0.48
1:B:917:LEU:HD12	1:B:917:LEU:HA	1.62	0.47
1:B:804:ILE:HB	1:B:805:PRO:CD	2.44	0.47
1:A:856:ILE:HG23	1:A:869:ARG:HG2	1.97	0.45
1:A:840:GLN:HE21	1:A:840:GLN:HA	1.80	0.45
1:A:756:MET:CE	2:A:1933:OR8:C24	2.94	0.45
1:A:723:GLU:CD	1:A:906:PRO:HB2	2.37	0.45
1:A:917:LEU:HD12	1:A:917:LEU:HA	1.86	0.44
1:B:800:THR:HG21	1:B:886:GLN:OE1	2.18	0.43

Continued on next page...

Continued from previous page...

Atom-1	Atom-2	Interatomic distance (Å)	Clash overlap (Å)
1:A:711:SER:HB2	1:B:697:ASP:OD2	2.19	0.43
4:B:1933:A2K:C21	4:B:1933:A2K:C16	2.98	0.42
1:A:791:GLU:HG3	1:A:794:PHE:H	1.85	0.42
1:B:876:LEU:O	1:B:876:LEU:HD23	2.21	0.41
1:A:876:LEU:HD23	1:A:876:LEU:C	2.41	0.41
1:A:876:LEU:HD23	1:A:876:LEU:O	2.21	0.41
1:B:882:ASP:OD1	1:B:882:ASP:N	2.55	0.40
1:B:830:ILE:HD11	1:B:926:LYS:HE3	2.03	0.40
1:B:703:HIS:HD2	1:B:717:SER:OG	2.05	0.40

There are no symmetry-related clashes.

5.3 Torsion angles [i](#)

5.3.1 Protein backbone [i](#)

In the following table, the Percentiles column shows the percent Ramachandran outliers of the chain as a percentile score with respect to all X-ray entries followed by that with respect to entries of similar resolution.

The Analysed column shows the number of residues for which the backbone conformation was analysed, and the total number of residues.

Mol	Chain	Analysed	Favoured	Allowed	Outliers	Percentiles	
1	A	250/260 (96%)	242 (97%)	8 (3%)	0	100	100
1	B	248/260 (95%)	241 (97%)	7 (3%)	0	100	100
All	All	498/520 (96%)	483 (97%)	15 (3%)	0	100	100

There are no Ramachandran outliers to report.

5.3.2 Protein sidechains [i](#)

In the following table, the Percentiles column shows the percent sidechain outliers of the chain as a percentile score with respect to all X-ray entries followed by that with respect to entries of similar resolution.

The Analysed column shows the number of residues for which the sidechain conformation was analysed, and the total number of residues.

Mol	Chain	Analysed	Rotameric	Outliers	Percentiles	
1	A	234/241 (97%)	231 (99%)	3 (1%)	71	70
1	B	232/241 (96%)	227 (98%)	5 (2%)	55	49
All	All	466/482 (97%)	458 (98%)	8 (2%)	63	60

All (8) residues with a non-rotameric sidechain are listed below:

Mol	Chain	Res	Type
1	A	787	GLN
1	A	802	TRP
1	A	840	GLN
1	B	812	GLN
1	B	815	GLN
1	B	860	GLN
1	B	882	ASP
1	B	917	LEU

Some sidechains can be flipped to improve hydrogen bonding and reduce clashes. All (12) such sidechains are listed below:

Mol	Chain	Res	Type
1	A	705	ASN
1	A	787	GLN
1	A	840	GLN
1	A	879	ASN
1	A	893	ASN
1	B	703	HIS
1	B	720	GLN
1	B	812	GLN
1	B	860	GLN
1	B	868	GLN
1	B	879	ASN
1	B	893	ASN

5.3.3 RNA ⓘ

There are no RNA molecules in this entry.

5.4 Non-standard residues in protein, DNA, RNA chains ⓘ

There are no non-standard protein/DNA/RNA residues in this entry.

5.5 Carbohydrates [i](#)

There are no carbohydrates in this entry.

5.6 Ligand geometry [i](#)

3 ligands are modelled in this entry.

In the following table, the Counts columns list the number of bonds (or angles) for which Mogul statistics could be retrieved, the number of bonds (or angles) that are observed in the model and the number of bonds (or angles) that are defined in the Chemical Component Dictionary. The Link column lists molecule types, if any, to which the group is linked. The Z score for a bond length (or angle) is the number of standard deviations the observed value is removed from the expected value. A bond length (or angle) with $|Z| > 2$ is considered an outlier worth inspection. RMSZ is the root-mean-square of all Z scores of the bond lengths (or angles).

Mol	Type	Chain	Res	Link	Bond lengths			Bond angles		
					Counts	RMSZ	# Z > 2	Counts	RMSZ	# Z > 2
2	OR8	A	1933	-	21,28,28	1.97	3 (14%)	25,42,42	3.52	11 (44%)
3	SO4	A	1934	-	4,4,4	0.27	0	6,6,6	0.30	0
4	A2K	B	1933	-	44,44,44	1.06	3 (6%)	56,67,67	1.48	11 (19%)

In the following table, the Chirals column lists the number of chiral outliers, the number of chiral centers analysed, the number of these observed in the model and the number defined in the Chemical Component Dictionary. Similar counts are reported in the Torsion and Rings columns. '-' means no outliers of that kind were identified.

Mol	Type	Chain	Res	Link	Chirals	Torsions	Rings
2	OR8	A	1933	-	-	0/10/16/16	0/3/3/3
3	SO4	A	1934	-	-	0/0/0/0	0/0/0/0
4	A2K	B	1933	-	-	0/18/79/79	0/6/7/7

All (6) bond length outliers are listed below:

Mol	Chain	Res	Type	Atoms	Z	Observed(Å)	Ideal(Å)
2	A	1933	OR8	C15-S14	-7.17	1.67	1.79
4	B	1933	A2K	C20-C19	-3.46	1.35	1.46
4	B	1933	A2K	C15-C2	-2.94	1.53	1.57
2	A	1933	OR8	C18-N19	-2.31	1.32	1.36
4	B	1933	A2K	C12-C15	-2.06	1.52	1.56
2	A	1933	OR8	C18-CL	3.35	1.84	1.72

All (22) bond angle outliers are listed below:

Mol	Chain	Res	Type	Atoms	Z	Observed(°)	Ideal(°)
2	A	1933	OR8	O17-S14-O16	-10.11	106.86	119.56
2	A	1933	OR8	O16-S14-C15	-5.81	100.51	108.82
4	B	1933	A2K	C7-C9-C13	-3.46	106.13	111.48
2	A	1933	OR8	C3-C2-C7	-3.21	115.45	120.79
4	B	1933	A2K	C6-C20-C4	-2.94	114.39	120.78
4	B	1933	A2K	C15-C2-C39	-2.39	110.06	115.22
4	B	1933	A2K	O24-C22-C23	-2.19	119.52	122.03
4	B	1933	A2K	C31-C23-C22	-2.13	113.95	117.47
4	B	1933	A2K	C12-C15-C22	-2.03	111.64	116.01
4	B	1933	A2K	C7-C6-C20	-2.00	106.72	111.18
4	B	1933	A2K	C6-C20-C19	2.00	121.61	117.44
2	A	1933	OR8	C24-C21-N20	2.19	124.50	119.78
2	A	1933	OR8	C23-C8-N9	2.58	126.96	119.22
4	B	1933	A2K	C36-N37-C38	2.87	121.83	116.83
2	A	1933	OR8	C15-S14-N13	3.00	111.82	107.00
4	B	1933	A2K	C16-C12-C10	3.11	115.14	110.94
2	A	1933	OR8	C12-N13-S14	3.55	126.60	119.92
2	A	1933	OR8	C26-N19-C18	4.87	135.23	129.15
2	A	1933	OR8	O16-S14-N13	5.17	115.27	107.03
2	A	1933	OR8	O17-S14-C15	5.33	116.45	108.82
4	B	1933	A2K	C14-C2-C15	5.43	107.37	100.12
2	A	1933	OR8	C21-N20-N19	5.45	109.04	104.35

There are no chirality outliers.

There are no torsion outliers.

There are no ring outliers.

2 monomers are involved in 7 short contacts:

Mol	Chain	Res	Type	Clashes	Symm-Clashes
2	A	1933	OR8	5	0
4	B	1933	A2K	2	0

5.7 Other polymers [i](#)

There are no such residues in this entry.

5.8 Polymer linkage issues [i](#)

There are no chain breaks in this entry.

6 Fit of model and data [i](#)

6.1 Protein, DNA and RNA chains [i](#)

In the following table, the column labelled ‘#RSRZ > 2’ contains the number (and percentage) of RSRZ outliers, followed by percent RSRZ outliers for the chain as percentile scores relative to all X-ray entries and entries of similar resolution. The OWAB column contains the minimum, median, 95th percentile and maximum values of the occupancy-weighted average B-factor per residue. The column labelled ‘Q < 0.9’ lists the number of (and percentage) of residues with an average occupancy less than 0.9.

Mol	Chain	Analysed	<RSRZ>	#RSRZ>2	OWAB(Å ²)	Q<0.9
1	A	250/260 (96%)	0.17	8 (3%) 47 51	26, 38, 70, 103	0
1	B	250/260 (96%)	0.03	4 (1%) 72 75	25, 41, 61, 76	0
All	All	500/520 (96%)	0.10	12 (2%) 59 62	25, 39, 67, 103	0

All (12) RSRZ outliers are listed below:

Mol	Chain	Res	Type	RSRZ
1	A	863	VAL	4.3
1	A	708	PRO	3.9
1	B	864	VAL	3.7
1	A	864	VAL	3.5
1	A	707	LYS	3.4
1	B	863	VAL	3.2
1	B	706	THR	2.7
1	A	709	ASP	2.5
1	B	860	GLN	2.4
1	A	865	SER	2.3
1	A	860	GLN	2.2
1	A	840	GLN	2.1

6.2 Non-standard residues in protein, DNA, RNA chains [i](#)

There are no non-standard protein/DNA/RNA residues in this entry.

6.3 Carbohydrates [i](#)

There are no carbohydrates in this entry.

6.4 Ligands [i](#)

In the following table, the Atoms column lists the number of modelled atoms in the group and the number defined in the chemical component dictionary. The B-factors column lists the minimum, median, 95th percentile and maximum values of B factors of atoms in the group. The column labelled 'Q< 0.9' lists the number of atoms with occupancy less than 0.9.

Mol	Type	Chain	Res	Atoms	RSCC	RSR	B-factors(\AA^2)	Q<0.9
2	OR8	A	1933	26/26	0.91	0.16	38,49,65,74	0
4	A2K	B	1933	38/38	0.92	0.13	32,36,41,43	0
3	SO4	A	1934	5/5	0.98	0.14	42,44,47,47	0

6.5 Other polymers [i](#)

There are no such residues in this entry.