



# Full wwPDB X-ray Structure Validation Report ⓘ

Jan 4, 2021 – 04:16 PM GMT

PDB ID : 7AQ0  
Title : Pseudomonas stutzeri nitrous oxide reductase mutant, D576A/S550A  
Authors : Zhang, L.; Bill, E.; Kroneck, P.M.H.; Einsle, O.  
Deposited on : 2020-10-20  
Resolution : 1.58 Å(reported)

This is a Full wwPDB X-ray Structure Validation Report for a publicly released PDB entry.

We welcome your comments at [validation@mail.wwpdb.org](mailto:validation@mail.wwpdb.org)

A user guide is available at

<https://www.wwpdb.org/validation/2017/XrayValidationReportHelp>

with specific help available everywhere you see the ⓘ symbol.

---

The following versions of software and data (see [references ⓘ](#)) were used in the production of this report:

MolProbity : 4.02b-467  
Mogul : 1.8.5 (274361), CSD as541be (2020)  
Xtriage (Phenix) : 1.13  
EDS : 2.16  
buster-report : 1.1.7 (2018)  
Percentile statistics : 20191225.v01 (using entries in the PDB archive December 25th 2019)  
Refmac : 5.8.0158  
CCP4 : 7.0.044 (Gargrove)  
Ideal geometry (proteins) : Engh & Huber (2001)  
Ideal geometry (DNA, RNA) : Parkinson et al. (1996)  
Validation Pipeline (wwPDB-VP) : 2.16

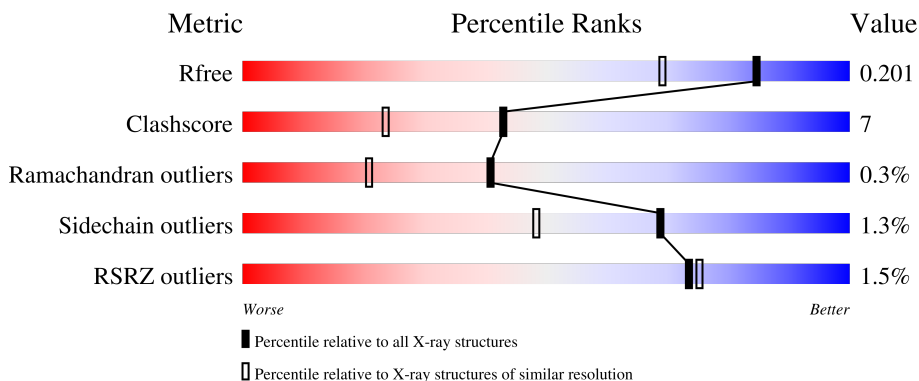
# 1 Overall quality at a glance

The following experimental techniques were used to determine the structure:

*X-RAY DIFFRACTION*

The reported resolution of this entry is 1.58 Å.

Percentile scores (ranging between 0-100) for global validation metrics of the entry are shown in the following graphic. The table shows the number of entries on which the scores are based.



Metric	Whole archive (#Entries)	Similar resolution (#Entries, resolution range(Å))
$R_{free}$	130704	5534 (1.60-1.56)
Clashscore	141614	5861 (1.60-1.56)
Ramachandran outliers	138981	5708 (1.60-1.56)
Sidechain outliers	138945	5703 (1.60-1.56)
RSRZ outliers	127900	5431 (1.60-1.56)

The table below summarises the geometric issues observed across the polymeric chains and their fit to the electron density. The red, orange, yellow and green segments of the lower bar indicate the fraction of residues that contain outliers for  $\geq 3$ , 2, 1 and 0 types of geometric quality criteria respectively. A grey segment represents the fraction of residues that are not modelled. The numeric value for each fraction is indicated below the corresponding segment, with a dot representing fractions  $\leq 5\%$ . The upper red bar (where present) indicates the fraction of residues that have poor fit to the electron density. The numeric value is given above the bar.

Mol	Chain	Length	Quality of chain
1	A	645	 2% 79% 11% • 9%
1	B	645	 % 76% 14% • 9%

The following table lists non-polymeric compounds, carbohydrate monomers and non-standard residues in protein, DNA, RNA chains that are outliers for geometric or electron-density-fit criteria:

Mol	Type	Chain	Res	Chirality	Geometry	Clashes	Electron density
5	FMT	A	704	-	-	X	-
5	FMT	A	710	-	-	X	-
5	FMT	B	707	-	-	X	-

## 2 Entry composition

There are 12 unique types of molecules in this entry. The entry contains 10272 atoms, of which 12 are hydrogens and 0 are deuteriums.

In the tables below, the ZeroOcc column contains the number of atoms modelled with zero occupancy, the AltConf column contains the number of residues with at least one atom in alternate conformation and the Trace column contains the number of residues modelled with at most 2 atoms.

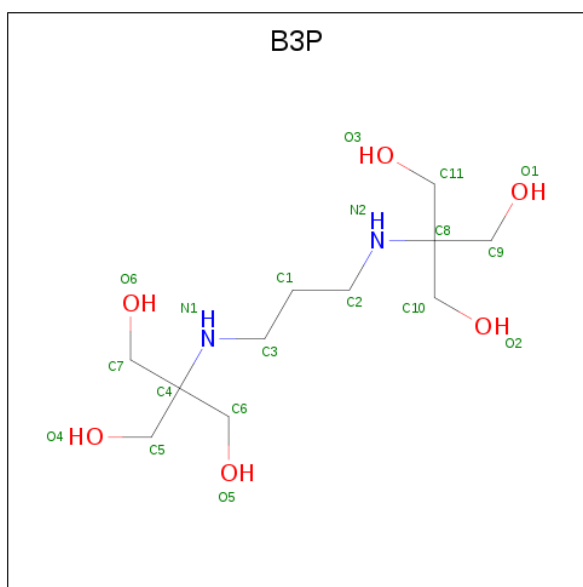
- Molecule 1 is a protein called Nitrous-oxide reductase.

Mol	Chain	Residues	Atoms					ZeroOcc	AltConf	Trace
			Total	C	N	O	S			
1	A	586	4625	2927	795	870	33	0	5	0
1	B	586	4614	2920	796	866	32	0	1	0

There are 18 discrepancies between the modelled and reference sequences:

Chain	Residue	Modelled	Actual	Comment	Reference
A	550	ALA	SER	engineered mutation	UNP P19573
A	576	ALA	ASP	engineered mutation	UNP P19573
A	639	TRP	-	expression tag	UNP P19573
A	640	SER	-	expression tag	UNP P19573
A	641	HIS	-	expression tag	UNP P19573
A	642	PRO	-	expression tag	UNP P19573
A	643	GLN	-	expression tag	UNP P19573
A	644	PHE	-	expression tag	UNP P19573
A	645	GLU	-	expression tag	UNP P19573
B	550	ALA	SER	engineered mutation	UNP P19573
B	576	ALA	ASP	engineered mutation	UNP P19573
B	639	TRP	-	expression tag	UNP P19573
B	640	SER	-	expression tag	UNP P19573
B	641	HIS	-	expression tag	UNP P19573
B	642	PRO	-	expression tag	UNP P19573
B	643	GLN	-	expression tag	UNP P19573
B	644	PHE	-	expression tag	UNP P19573
B	645	GLU	-	expression tag	UNP P19573

- Molecule 2 is 2-[3-(2-HYDROXY-1,1-DIHYDROXYMETHYL-ETHYLAMINO)-PROPYL AMINO]-2-HYDROXYMETHYL-PROPANE-1,3-DIOL (three-letter code: B3P) (formula: C<sub>11</sub>H<sub>26</sub>N<sub>2</sub>O<sub>6</sub>).



Mol	Chain	Residues	Atoms			ZeroOcc	AltConf	
			Total	C	N			O
2	A	1	19	11	2	6	0	0
2	B	1	19	11	2	6	0	0

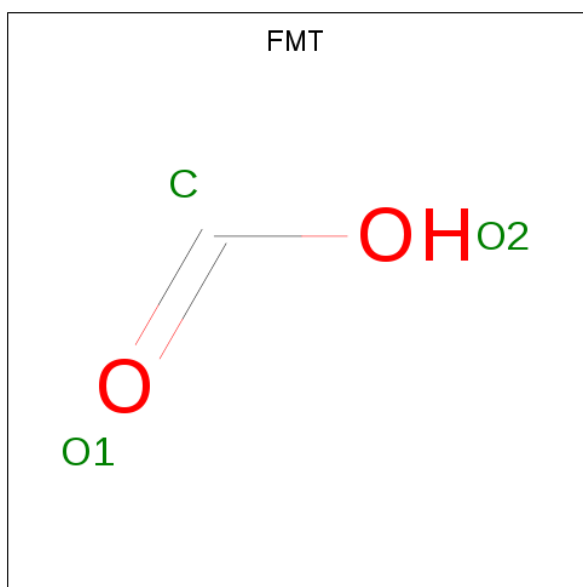
- Molecule 3 is SODIUM ION (three-letter code: NA) (formula: Na).

Mol	Chain	Residues	Atoms		ZeroOcc	AltConf
			Total	Na		
3	B	1	1	1	0	0
3	A	1	1	1	0	0

- Molecule 4 is CALCIUM ION (three-letter code: CA) (formula: Ca).

Mol	Chain	Residues	Atoms		ZeroOcc	AltConf
			Total	Ca		
4	B	1	1	1	0	0
4	A	1	1	1	0	0

- Molecule 5 is FORMIC ACID (three-letter code: FMT) (formula: CH<sub>2</sub>O<sub>2</sub>).

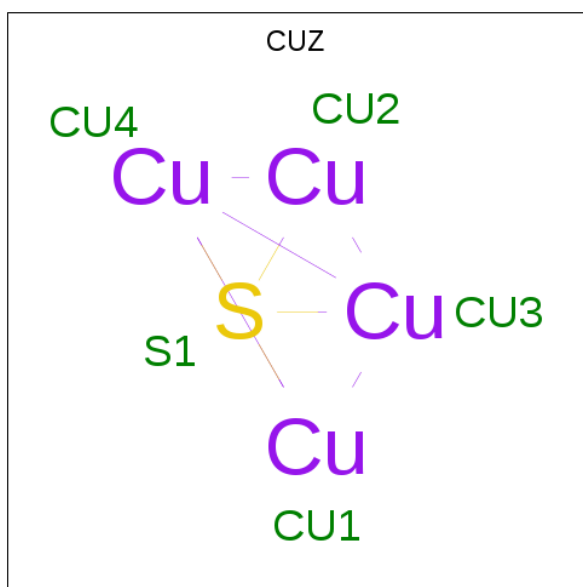


Mol	Chain	Residues	Atoms	ZeroOcc	AltConf
5	A	1	Total C O 3 1 2	0	0
5	A	1	Total C O 3 1 2	0	0
5	A	1	Total C O 3 1 2	0	0
5	A	1	Total C O 3 1 2	0	0
5	B	1	Total C O 3 1 2	0	0
5	B	1	Total C O 3 1 2	0	0
5	B	1	Total C O 3 1 2	0	0
5	B	1	Total C O 3 1 2	0	0

- Molecule 6 is CHLORIDE ION (three-letter code: CL) (formula: Cl).

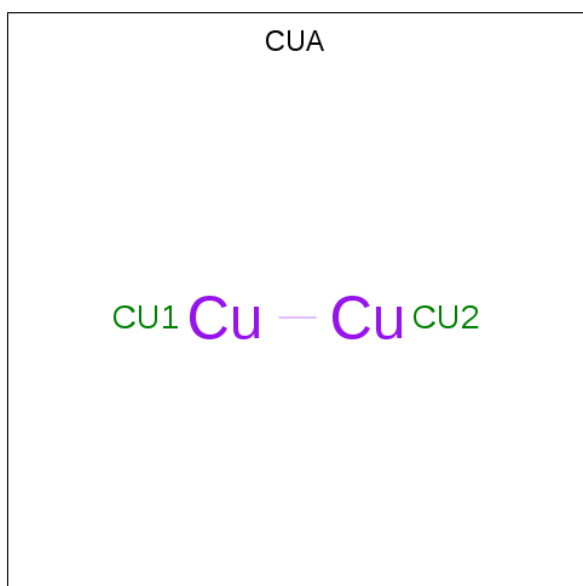
Mol	Chain	Residues	Atoms	ZeroOcc	AltConf
6	B	1	Total Cl 1 1	0	0
6	A	1	Total Cl 1 1	0	0

- Molecule 7 is (MU-4-SULFIDO)-TETRA-NUCLEAR COPPER ION (three-letter code: CUZ) (formula: Cu<sub>4</sub>S) (labeled as "Ligand of Interest" by depositor).



Mol	Chain	Residues	Atoms			ZeroOcc	AltConf
7	A	1	Total	Cu	S	0	0
			5	4	1		
7	B	1	Total	Cu	S	0	0
			5	4	1		

- Molecule 8 is DINUCLEAR COPPER ION (three-letter code: CUA) (formula: Cu<sub>2</sub>) (labeled as "Ligand of Interest" by depositor).



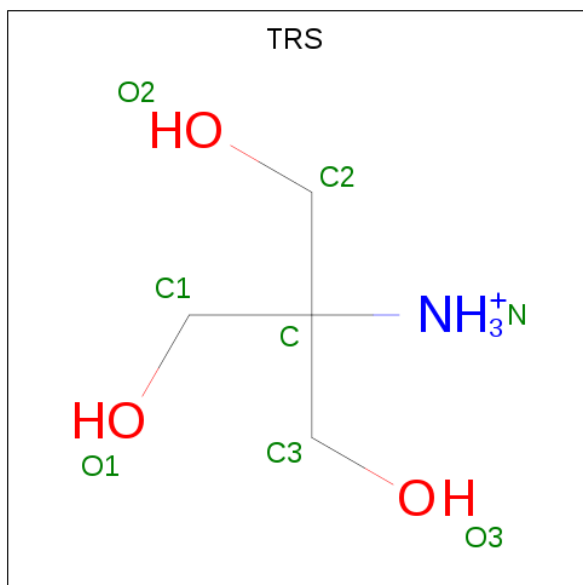
Mol	Chain	Residues	Atoms		ZeroOcc	AltConf
8	A	1	Total	Cu	0	0
			2	2		

*Continued on next page...*

Continued from previous page...

Mol	Chain	Residues	Atoms		ZeroOcc	AltConf
8	B	1	Total	Cu	0	0
			2	2		

- Molecule 9 is 2-AMINO-2-HYDROXYMETHYL-PROPANE-1,3-DIOL (three-letter code: TRS) (formula: C<sub>4</sub>H<sub>12</sub>NO<sub>3</sub>).



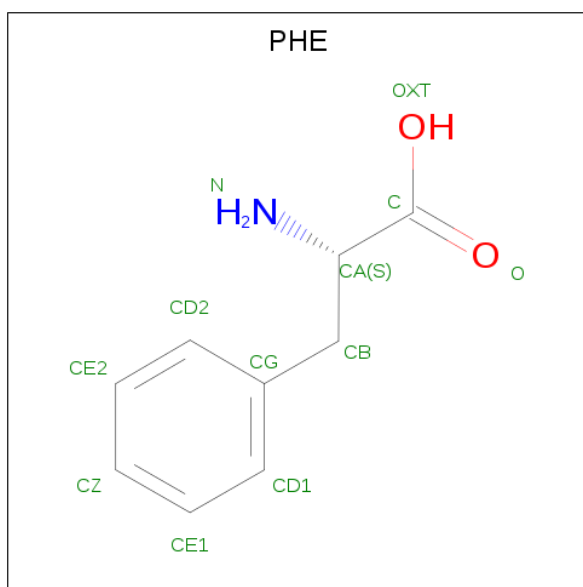
Mol	Chain	Residues	Atoms					ZeroOcc	AltConf
9	A	1	Total	C	H	N	O	0	0
			20	4	12	1	3		

- Molecule 10 is POTASSIUM ION (three-letter code: K) (formula: K).

Mol	Chain	Residues	Atoms		ZeroOcc	AltConf
10	B	1	Total	K	0	0
			1	1		
10	A	1	Total	K	0	0
			1	1		

- Molecule 11 is PHENYLALANINE (three-letter code: PHE) (formula: C<sub>9</sub>H<sub>11</sub>NO<sub>2</sub>).





Mol	Chain	Residues	Atoms				ZeroOcc	AltConf
			Total	C	N	O		
11	B	1	11	9	1	1	0	0

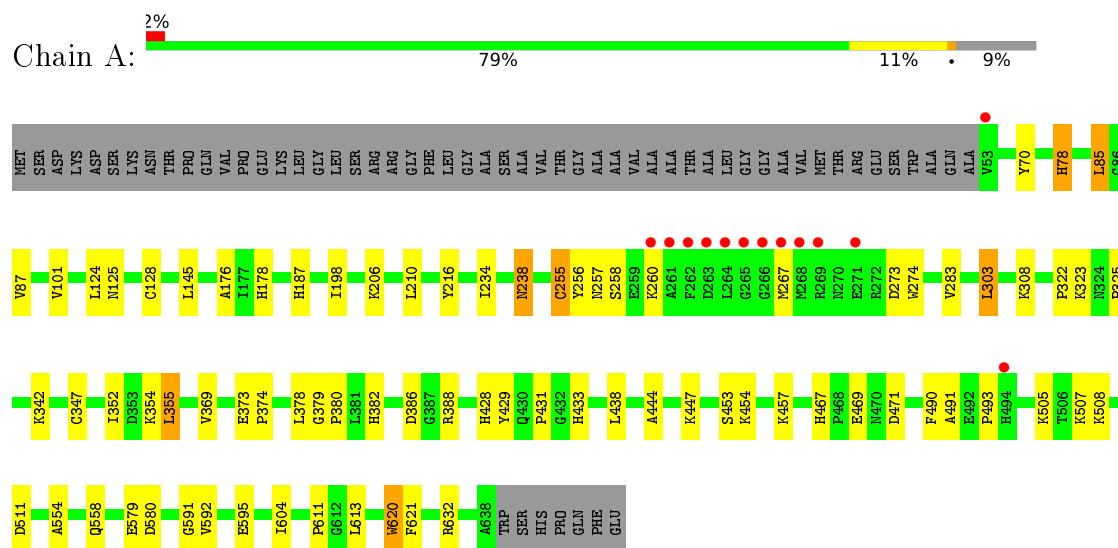
- Molecule 12 is water.

Mol	Chain	Residues	Atoms		ZeroOcc	AltConf
			Total	O		
12	A	514	514	514	0	0
12	B	404	404	404	0	0

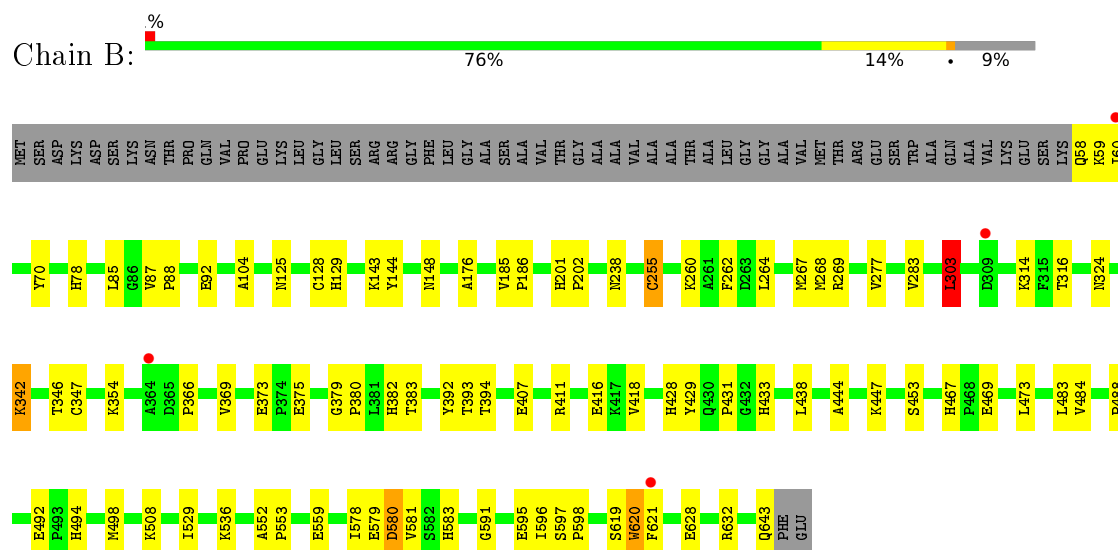
### 3 Residue-property plots

These plots are drawn for all protein, RNA, DNA and oligosaccharide chains in the entry. The first graphic for a chain summarises the proportions of the various outlier classes displayed in the second graphic. The second graphic shows the sequence view annotated by issues in geometry and electron density. Residues are color-coded according to the number of geometric quality criteria for which they contain at least one outlier: green = 0, yellow = 1, orange = 2 and red = 3 or more. A red dot above a residue indicates a poor fit to the electron density ( $RSRZ > 2$ ). Stretches of 2 or more consecutive residues without any outlier are shown as a green connector. Residues present in the sample, but not in the model, are shown in grey.

- Molecule 1: Nitrous-oxide reductase



- Molecule 1: Nitrous-oxide reductase



## 4 Data and refinement statistics

Property	Value	Source
Space group	P 1 21 1	Depositor
Cell constants a, b, c, $\alpha$ , $\beta$ , $\gamma$	69.22Å 76.72Å 109.00Å 90.00° 93.33° 90.00°	Depositor
Resolution (Å)	51.34 – 1.58 56.86 – 1.58	Depositor EDS
% Data completeness (in resolution range)	68.0 (51.34-1.58) 68.2 (56.86-1.58)	Depositor EDS
$R_{merge}$	(Not available)	Depositor
$R_{sym}$	(Not available)	Depositor
$\langle I/\sigma(I) \rangle$ <sup>1</sup>	1.26 (at 1.58Å)	Xtrriage
Refinement program	PHENIX 1.13_2998	Depositor
R, $R_{free}$	0.160 , 0.201 0.160 , 0.201	Depositor DCC
$R_{free}$ test set	5244 reflections (4.97%)	wwPDB-VP
Wilson B-factor (Å <sup>2</sup> )	20.6	Xtrriage
Anisotropy	0.060	Xtrriage
Bulk solvent $k_{sol}$ (e/Å <sup>3</sup> ), $B_{sol}$ (Å <sup>2</sup> )	0.32 , 48.4	EDS
L-test for twinning <sup>2</sup>	$\langle  L  \rangle = 0.50$ , $\langle L^2 \rangle = 0.33$	Xtrriage
Estimated twinning fraction	No twinning to report.	Xtrriage
$F_o, F_c$ correlation	0.97	EDS
Total number of atoms	10272	wwPDB-VP
Average B, all atoms (Å <sup>2</sup> )	27.0	wwPDB-VP

Xtrriage's analysis on translational NCS is as follows: *The largest off-origin peak in the Patterson function is 4.05% of the height of the origin peak. No significant pseudotranslation is detected.*

<sup>1</sup>Intensities estimated from amplitudes.

<sup>2</sup>Theoretical values of  $\langle |L| \rangle$ ,  $\langle L^2 \rangle$  for acentric reflections are 0.5, 0.333 respectively for untwinned datasets, and 0.375, 0.2 for perfectly twinned datasets.

## 5 Model quality [i](#)

### 5.1 Standard geometry [i](#)

Bond lengths and bond angles in the following residue types are not validated in this section: CL, NA, K, B3P, CUZ, CUA, TRS, CA, FMT

The Z score for a bond length (or angle) is the number of standard deviations the observed value is removed from the expected value. A bond length (or angle) with  $|Z| > 5$  is considered an outlier worth inspection. RMSZ is the root-mean-square of all Z scores of the bond lengths (or angles).

Mol	Chain	Bond lengths		Bond angles	
		RMSZ	# Z  >5	RMSZ	# Z  >5
1	A	0.49	1/4752 (0.0%)	0.64	4/6433 (0.1%)
1	B	0.47	0/4733	0.62	2/6413 (0.0%)
All	All	0.48	1/9485 (0.0%)	0.63	6/12846 (0.0%)

All (1) bond length outliers are listed below:

Mol	Chain	Res	Type	Atoms	Z	Observed(Å)	Ideal(Å)
1	A	128	CYS	CB-SG	-6.71	1.70	1.82

All (6) bond angle outliers are listed below:

Mol	Chain	Res	Type	Atoms	Z	Observed(°)	Ideal(°)
1	A	303	LEU	CA-CB-CG	-7.28	98.56	115.30
1	A	493	PRO	C-N-CA	-6.73	104.88	121.70
1	A	85	LEU	CA-CB-CG	5.80	128.65	115.30
1	B	580	ASP	CB-CG-OD1	5.74	123.47	118.30
1	A	386	ASP	CB-CG-OD1	5.15	122.94	118.30
1	B	303	LEU	CA-CB-CG	-5.15	103.45	115.30

There are no chirality outliers.

There are no planarity outliers.

### 5.2 Too-close contacts [i](#)

In the following table, the Non-H and H(model) columns list the number of non-hydrogen atoms and hydrogen atoms in the chain respectively. The H(added) column lists the number of hydrogen atoms added and optimized by MolProbity. The Clashes column lists the number of clashes within the asymmetric unit, whereas Symm-Clashes lists symmetry-related clashes.

Mol	Chain	Non-H	H(model)	H(added)	Clashes	Symm-Clashes
1	A	4625	0	4515	63	0
1	B	4614	0	4479	70	0
2	A	19	0	26	0	0
2	B	19	0	26	2	0
3	A	1	0	0	0	0
3	B	1	0	0	0	0
4	A	1	0	0	0	0
4	B	1	0	0	0	0
5	A	12	0	4	5	0
5	B	12	0	4	4	0
6	A	1	0	0	0	0
6	B	1	0	0	0	0
7	A	5	0	0	0	0
7	B	5	0	0	0	0
8	A	2	0	0	0	0
8	B	2	0	0	0	0
9	A	8	12	12	0	0
10	A	1	0	0	0	0
10	B	1	0	0	0	0
11	B	11	0	8	2	0
12	A	514	0	0	10	0
12	B	404	0	0	12	0
All	All	10260	12	9074	126	0

The all-atom clashscore is defined as the number of clashes found per 1000 atoms (including hydrogen atoms). The all-atom clashscore for this structure is 7.

All (126) close contacts within the same asymmetric unit are listed below, sorted by their clash magnitude.

Atom-1	Atom-2	Interatomic distance (Å)	Clash overlap (Å)
1:A:388:ARG:HE	5:A:710:FMT:H	1.11	1.10
1:A:267:MET:HE1	1:B:628:GLU:HG3	1.61	0.83
1:A:267:MET:CE	1:B:628:GLU:HG3	2.09	0.83
1:A:388:ARG:NE	5:A:710:FMT:H	1.95	0.78
1:A:187:HIS:HD2	5:A:704:FMT:H	1.47	0.78
1:A:187:HIS:CD2	5:A:704:FMT:H	2.20	0.77
1:B:469:GLU:HG3	1:B:492:GLU:HA	1.66	0.76
1:B:87:VAL:HG11	1:B:498:MET:CE	2.17	0.74
1:B:314:LYS:HE2	12:B:1151:HOH:O	1.88	0.73
1:B:283:VAL:HG13	1:B:303:LEU:HD13	1.71	0.72
1:B:87:VAL:HG11	1:B:498:MET:HE1	1.74	0.69
1:B:536:LYS:HE2	12:B:924:HOH:O	1.92	0.68

*Continued on next page...*

*Continued from previous page...*

Atom-1	Atom-2	Interatomic distance (Å)	Clash overlap (Å)
1:A:632:ARG:HD3	12:A:1002:HOH:O	1.94	0.68
1:A:178:HIS:HB3	12:A:907:HOH:O	1.94	0.68
1:A:256:TYR:HE1	1:A:267:MET:HE3	1.59	0.67
1:B:416:GLU:O	1:B:418:VAL:HG12	1.93	0.67
1:B:58:GLN:O	1:B:60:ILE:HD12	1.94	0.67
1:A:70:TYR:OH	1:A:447[B]:LYS:HE3	1.95	0.67
1:A:613:LEU:HD11	1:A:632:ARG:HB3	1.77	0.66
1:A:283:VAL:HG13	1:A:303:LEU:HD13	1.81	0.63
1:B:260:LYS:HE2	12:B:927:HOH:O	1.98	0.63
1:A:210:LEU:HG	12:B:1101:HOH:O	1.98	0.62
1:A:508:LYS:HD3	1:A:579:GLU:OE2	1.98	0.62
1:A:256:TYR:CE1	1:A:267:MET:HE3	2.34	0.62
2:B:702:B3P:HN2	5:B:707:FMT:H	1.63	0.61
1:B:632:ARG:HD3	12:B:802:HOH:O	1.99	0.60
1:B:382:HIS:HB3	12:B:1131:HOH:O	2.02	0.59
1:A:388:ARG:HE	5:A:710:FMT:C	2.02	0.58
1:B:87:VAL:HG11	1:B:498:MET:HE3	1.86	0.57
1:A:580:ASP:OD1	1:B:467:HIS:HB2	2.05	0.56
1:A:379:GLY:N	1:A:380:PRO:HD3	2.20	0.56
1:B:595:GLU:HG2	1:B:596:ILE:N	2.21	0.56
1:A:308:LYS:HG2	12:A:831:HOH:O	2.06	0.55
1:A:267:MET:HE2	1:B:628:GLU:HG3	1.86	0.55
1:A:206:LYS:HD2	12:A:1036:HOH:O	2.07	0.54
1:B:643:GLN:C	11:B:701:PHE:N	2.61	0.54
1:A:101:VAL:HG21	1:A:124:LEU:HD22	1.90	0.54
1:B:58:GLN:N	5:B:712:FMT:O2	2.41	0.54
1:B:58:GLN:OE1	1:B:447:LYS:HD2	2.08	0.54
1:A:595:GLU:HB2	1:A:620:TRP:CZ3	2.43	0.53
1:B:382:HIS:CE1	1:B:433:HIS:CE1	2.96	0.53
1:A:255[B]:CYS:SG	1:A:274:TRP:NE1	2.82	0.52
1:A:382:HIS:CE1	1:A:433:HIS:CE1	2.97	0.52
1:A:505:LYS:HE2	12:A:1185:HOH:O	2.09	0.52
1:B:143:LYS:HE2	1:B:144:TYR:CZ	2.45	0.51
1:B:269:ARG:NH1	12:B:805:HOH:O	2.40	0.51
1:A:595:GLU:HB2	1:A:620:TRP:CH2	2.46	0.51
2:B:702:B3P:HN2	5:B:707:FMT:C	2.24	0.51
1:B:379:GLY:N	1:B:380:PRO:HD3	2.26	0.51
1:B:407:GLU:HG2	12:B:868:HOH:O	2.10	0.51
1:B:70:TYR:HB2	1:B:87:VAL:HB	1.92	0.51
1:A:258:SER:HB2	1:A:274:TRP:CH2	2.47	0.50
1:B:508:LYS:HD3	1:B:579:GLU:OE2	2.10	0.50

*Continued on next page...*

*Continued from previous page...*

Atom-1	Atom-2	Interatomic distance (Å)	Clash overlap (Å)
1:B:354:LYS:NZ	12:B:809:HOH:O	2.43	0.49
1:B:85:LEU:N	1:B:85:LEU:HD23	2.27	0.49
1:A:352:ILE:HA	1:A:355:LEU:HD22	1.94	0.49
1:B:508:LYS:HD3	1:B:579:GLU:CD	2.33	0.49
1:A:507:LYS:HE3	1:A:511:ASP:OD2	2.12	0.49
1:B:129:HIS:CD2	1:B:494:HIS:CE1	3.01	0.49
1:A:125:ASN:OD1	1:B:591:GLY:HA2	2.13	0.48
1:A:78:HIS:CE1	1:B:619:SER:O	2.67	0.48
1:B:324:ASN:O	1:B:342:LYS:HE2	2.14	0.48
1:A:467:HIS:HB2	1:B:580:ASP:OD1	2.14	0.48
1:B:366:PRO:O	1:B:369:VAL:HG22	2.13	0.48
1:A:454:LYS:HE2	12:A:932:HOH:O	2.14	0.48
12:A:886:HOH:O	1:B:494:HIS:HE1	1.97	0.47
1:A:255[A]:CYS:HB3	1:A:274:TRP:CD1	2.50	0.47
1:A:255[B]:CYS:SG	1:A:274:TRP:CD1	3.08	0.47
1:A:258:SER:HB2	1:A:274:TRP:CZ3	2.50	0.47
1:B:383:THR:HA	1:B:392:TYR:O	2.14	0.47
1:A:592:VAL:HG13	1:A:604:ILE:HD13	1.97	0.47
1:A:438:LEU:HB2	1:A:444:ALA:HA	1.97	0.47
1:B:407:GLU:O	1:B:411:ARG:HD3	2.15	0.46
1:B:382:HIS:O	1:B:393:THR:HA	2.16	0.46
1:A:490:PHE:O	1:A:491:ALA:HB3	2.15	0.46
1:A:632:ARG:HD2	1:B:262:PHE:HB2	1.97	0.46
1:A:457:LYS:NZ	12:A:809:HOH:O	2.43	0.46
1:B:59:LYS:HA	12:B:1067:HOH:O	2.16	0.46
1:A:378:LEU:HA	1:A:378:LEU:HD23	1.74	0.45
1:A:70:TYR:HB2	1:A:87:VAL:HB	1.98	0.45
1:A:198:ILE:HD13	1:A:260:LYS:HG2	1.98	0.45
1:B:380:PRO:HA	1:B:394:THR:O	2.17	0.45
1:B:552:ALA:HB2	1:B:583:HIS:HE1	1.81	0.45
1:B:104:ALA:O	1:B:620:TRP:HZ3	2.00	0.45
1:B:643:GLN:C	11:B:701:PHE:HA	2.36	0.45
1:B:128:CYS:HB3	1:B:148:ASN:O	2.15	0.45
1:B:431:PRO:HA	1:B:453:SER:HA	1.99	0.45
1:B:469:GLU:O	1:B:488:PRO:HA	2.17	0.45
1:B:559:GLU:HA	1:B:632:ARG:O	2.17	0.44
1:A:347:CYS:O	1:A:373:GLU:HA	2.17	0.44
1:B:264:LEU:O	1:B:268:MET:HE2	2.16	0.44
1:A:613:LEU:CD1	1:A:632:ARG:HB3	2.47	0.44
1:B:529:ILE:O	5:B:706:FMT:H	2.18	0.44
1:B:578:ILE:HG22	1:B:579:GLU:N	2.32	0.44

*Continued on next page...*

Continued from previous page...

Atom-1	Atom-2	Interatomic distance (Å)	Clash overlap (Å)
1:A:591:GLY:HA2	1:B:125:ASN:OD1	2.17	0.44
1:B:579:GLU:HG3	12:B:1118:HOH:O	2.16	0.44
1:A:431:PRO:HA	1:A:453:SER:HA	2.00	0.43
1:B:428:HIS:HA	1:B:429:TYR:CG	2.53	0.43
1:A:145:LEU:C	1:A:145:LEU:HD23	2.39	0.43
1:A:198:ILE:CD1	1:A:260:LYS:HG2	2.47	0.43
1:A:347:CYS:O	1:A:374:PRO:HD2	2.18	0.43
1:A:611:PRO:O	12:A:801:HOH:O	2.21	0.43
1:B:552:ALA:HA	1:B:553:PRO:HA	1.79	0.42
1:B:277:VAL:O	1:B:316:THR:HA	2.19	0.42
1:A:554:ALA:HB1	1:A:558:GLN:NE2	2.35	0.42
1:B:347:CYS:O	1:B:373:GLU:HA	2.19	0.42
1:B:346:THR:HG22	1:B:375:GLU:HA	2.02	0.42
1:A:273:ASP:HB2	1:A:325:PRO:HD2	2.02	0.42
1:B:201:HIS:HA	1:B:202:PRO:HA	1.90	0.42
1:A:428:HIS:HA	1:A:429:TYR:CG	2.55	0.42
1:B:185:VAL:HG13	1:B:186:PRO:HA	2.01	0.42
1:A:354:LYS:HD3	1:A:369:VAL:HA	2.01	0.41
1:B:238:ASN:O	1:B:255:CYS:HB2	2.20	0.41
1:A:238:ASN:ND2	1:A:256:TYR:CZ	2.88	0.41
1:B:85:LEU:HD22	1:B:92:GLU:HA	2.02	0.41
1:A:216:TYR:CD1	1:A:234:ILE:HG23	2.55	0.41
1:B:597:SER:HB3	1:B:598:PRO:HD2	2.03	0.41
1:B:473:LEU:O	1:B:484:VAL:HG22	2.21	0.41
1:B:87:VAL:HG13	1:B:88:PRO:HA	2.03	0.40
1:A:260:LYS:HE3	12:A:993:HOH:O	2.22	0.40
1:A:322:PRO:HA	1:A:323:LYS:HA	1.91	0.40
1:B:267:MET:HE1	12:B:1179:HOH:O	2.21	0.40
1:A:469:GLU:OE1	1:A:471:ASP:OD1	2.39	0.40
1:B:581:VAL:O	1:B:581:VAL:HG12	2.21	0.40
1:A:238:ASN:HB3	1:A:257:ASN:HB3	2.03	0.40
1:B:438:LEU:HB2	1:B:444:ALA:HA	2.04	0.40

There are no symmetry-related clashes.

## 5.3 Torsion angles [i](#)

### 5.3.1 Protein backbone [i](#)

In the following table, the Percentiles column shows the percent Ramachandran outliers of the chain as a percentile score with respect to all X-ray entries followed by that with respect to entries



of similar resolution.

The Analysed column shows the number of residues for which the backbone conformation was analysed, and the total number of residues.

Mol	Chain	Analysed	Favoured	Allowed	Outliers	Percentiles	
1	A	589/645 (91%)	565 (96%)	22 (4%)	2 (0%)	41	21
1	B	585/645 (91%)	561 (96%)	22 (4%)	2 (0%)	41	21
All	All	1174/1290 (91%)	1126 (96%)	44 (4%)	4 (0%)	41	21

All (4) Ramachandran outliers are listed below:

Mol	Chain	Res	Type
1	B	342	LYS
1	A	342	LYS
1	A	176	ALA
1	B	176	ALA

### 5.3.2 Protein sidechains [i](#)

In the following table, the Percentiles column shows the percent sidechain outliers of the chain as a percentile score with respect to all X-ray entries followed by that with respect to entries of similar resolution.

The Analysed column shows the number of residues for which the sidechain conformation was analysed, and the total number of residues.

Mol	Chain	Analysed	Rotameric	Outliers	Percentiles	
1	A	504/542 (93%)	496 (98%)	8 (2%)	62	39
1	B	500/542 (92%)	494 (99%)	6 (1%)	71	52
All	All	1004/1084 (93%)	990 (99%)	14 (1%)	69	45

All (14) residues with a non-rotameric sidechain are listed below:

Mol	Chain	Res	Type
1	A	78	HIS
1	A	85	LEU
1	A	238	ASN
1	A	255[A]	CYS
1	A	255[B]	CYS
1	A	355	LEU
1	A	620	TRP
1	A	621	PHE

*Continued on next page...*

*Continued from previous page...*

Mol	Chain	Res	Type
1	B	78	HIS
1	B	255	CYS
1	B	303	LEU
1	B	483	LEU
1	B	620	TRP
1	B	621	PHE

Sometimes sidechains can be flipped to improve hydrogen bonding and reduce clashes. There are no such sidechains identified.

### 5.3.3 RNA [i](#)

There are no RNA molecules in this entry.

## 5.4 Non-standard residues in protein, DNA, RNA chains [i](#)

There are no non-standard protein/DNA/RNA residues in this entry.

## 5.5 Carbohydrates [i](#)

There are no monosaccharides in this entry.

## 5.6 Ligand geometry [i](#)

Of 24 ligands modelled in this entry, 8 are monoatomic - leaving 16 for Mogul analysis.

There are no bond length outliers.

There are no bond angle outliers.

There are no chirality outliers.

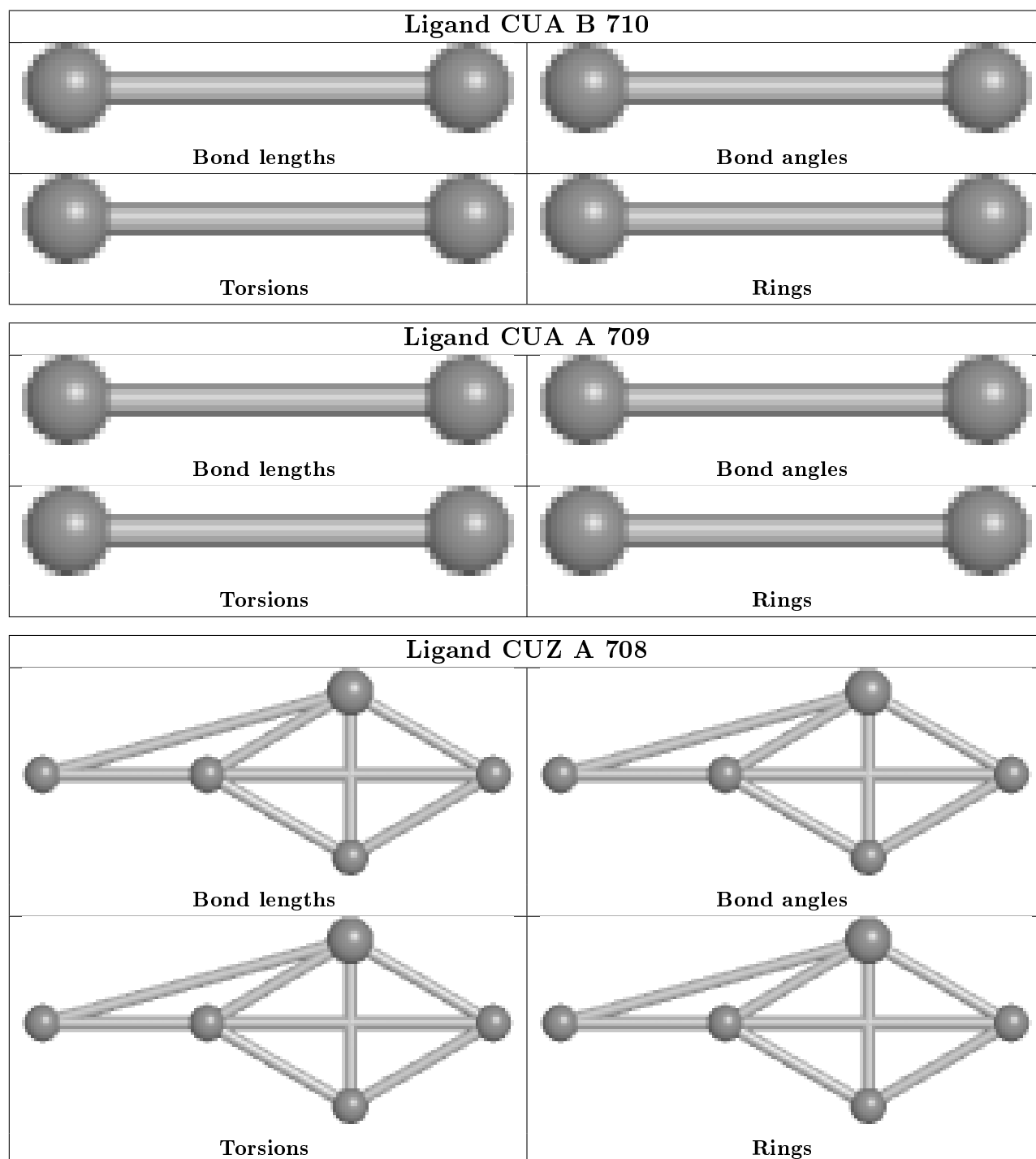
There are no torsion outliers.

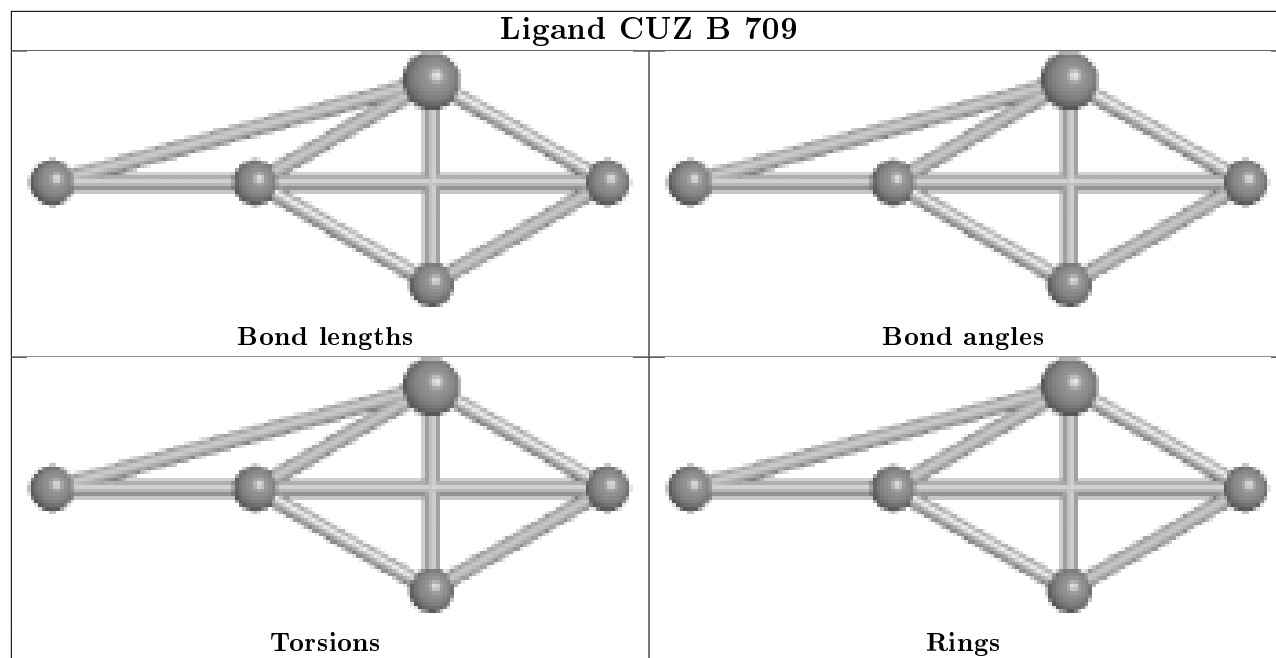
There are no ring outliers.

No monomer is involved in short contacts.

The following is a two-dimensional graphical depiction of Mogul quality analysis of bond lengths, bond angles, torsion angles, and ring geometry for all instances of the Ligand of Interest. In addition, ligands with molecular weight > 250 and outliers as shown on the validation Tables will also be included. For torsion angles, if less than 5% of the Mogul distribution of torsion angles is within 10 degrees of the torsion angle in question, then that torsion angle is considered an outlier. Any bond that is central to one or more torsion angles identified as an outlier by Mogul will be

highlighted in the graph. For rings, the root-mean-square deviation (RMSD) between the ring in question and similar rings identified by Mogul is calculated over all ring torsion angles. If the average RMSD is greater than 60 degrees and the minimal RMSD between the ring in question and any Mogul-identified rings is also greater than 60 degrees, then that ring is considered an outlier. The outliers are highlighted in purple. The color gray indicates Mogul did not find sufficient equivalents in the CSD to analyse the geometry.





## 5.7 Other polymers [i](#)

There are no such residues in this entry.

## 5.8 Polymer linkage issues [i](#)

There are no chain breaks in this entry.

## 6 Fit of model and data [i](#)

### 6.1 Protein, DNA and RNA chains [i](#)

In the following table, the column labelled ‘#RSRZ> 2’ contains the number (and percentage) of RSRZ outliers, followed by percent RSRZ outliers for the chain as percentile scores relative to all X-ray entries and entries of similar resolution. The OWAB column contains the minimum, median, 95<sup>th</sup> percentile and maximum values of the occupancy-weighted average B-factor per residue. The column labelled ‘Q< 0.9’ lists the number of (and percentage) of residues with an average occupancy less than 0.9.

Mol	Chain	Analysed	<RSRZ>	#RSRZ>2	OWAB(Å <sup>2</sup> )	Q<0.9
1	A	586/645 (90%)	-0.48	13 (2%) 62 63	11, 21, 47, 84	0
1	B	586/645 (90%)	-0.42	4 (0%) 87 88	13, 27, 49, 78	0
All	All	1172/1290 (90%)	-0.45	17 (1%) 73 75	11, 24, 48, 84	0

All (17) RSRZ outliers are listed below:

Mol	Chain	Res	Type	RSRZ
1	B	364	ALA	3.7
1	A	265	GLY	3.7
1	A	53	VAL	3.6
1	A	269	ARG	3.6
1	B	60	ILE	3.5
1	A	262	PHE	3.3
1	A	494	HIS	3.3
1	A	264	LEU	3.3
1	A	266	GLY	3.1
1	B	309	ASP	2.8
1	A	268	MET	2.7
1	A	267	MET	2.5
1	A	263	ASP	2.5
1	A	271	GLU	2.4
1	A	261	ALA	2.1
1	A	260	LYS	2.1
1	B	621	PHE	2.1

### 6.2 Non-standard residues in protein, DNA, RNA chains [i](#)

There are no non-standard protein/DNA/RNA residues in this entry.

### 6.3 Carbohydrates [i](#)

There are no monosaccharides in this entry.

### 6.4 Ligands [i](#)

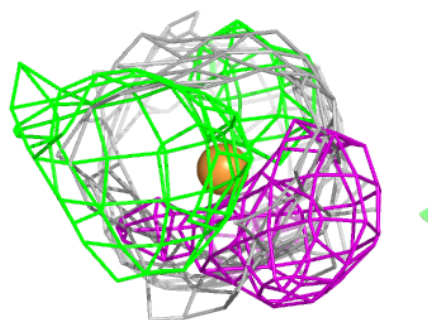
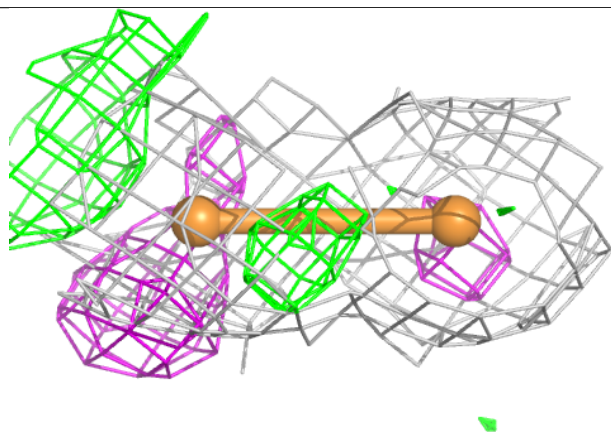
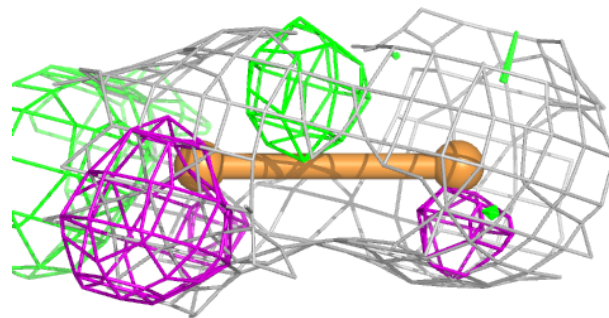
In the following table, the Atoms column lists the number of modelled atoms in the group and the number defined in the chemical component dictionary. The B-factors column lists the minimum, median, 95<sup>th</sup> percentile and maximum values of B factors of atoms in the group. The column labelled 'Q< 0.9' lists the number of atoms with occupancy less than 0.9.

Mol	Type	Chain	Res	Atoms	RSCC	RSR	B-factors(Å <sup>2</sup> )	Q<0.9
5	FMT	A	706	3/3	0.49	0.19	63,63,64,67	0
5	FMT	B	711	3/3	0.69	0.14	71,71,72,72	0
11	PHE	B	701	11/12	0.79	0.17	43,50,54,55	0
5	FMT	B	712	3/3	0.82	0.09	59,59,60,60	0
5	FMT	A	705	3/3	0.85	0.11	53,53,58,61	0
5	FMT	A	704	3/3	0.85	0.15	35,35,50,52	0
9	TRS	A	711	8/8	0.89	0.18	37,48,61,63	0
5	FMT	A	710	3/3	0.94	0.11	25,25,39,40	0
8	CUA	B	710	2/2	0.94	0.05	32,32,32,37	2
2	B3P	A	701	19/19	0.94	0.07	16,23,28,35	0
7	CUZ	A	708	5/5	0.95	0.10	19,23,36,39	5
5	FMT	B	706	3/3	0.95	0.21	44,44,45,55	0
5	FMT	B	707	3/3	0.96	0.13	19,19,23,39	0
10	K	A	712	1/1	0.97	0.09	47,47,47,47	0
8	CUA	A	709	2/2	0.97	0.06	21,21,21,22	2
7	CUZ	B	709	5/5	0.97	0.05	25,25,34,35	5
2	B3P	B	702	19/19	0.97	0.06	17,21,25,27	0
4	CA	A	703	1/1	0.98	0.05	16,16,16,16	1
6	CL	A	707	1/1	0.99	0.07	15,15,15,15	1
10	K	B	705	1/1	0.99	0.04	14,14,14,14	1
3	NA	A	702	1/1	0.99	0.05	15,15,15,15	1
3	NA	B	703	1/1	0.99	0.06	20,20,20,20	1
6	CL	B	708	1/1	0.99	0.06	25,25,25,25	1
4	CA	B	704	1/1	1.00	0.05	23,23,23,23	1

The following is a graphical depiction of the model fit to experimental electron density of all instances of the Ligand of Interest. In addition, ligands with molecular weight > 250 and outliers as shown on the geometry validation Tables will also be included. Each fit is shown from different orientation to approximate a three-dimensional view.

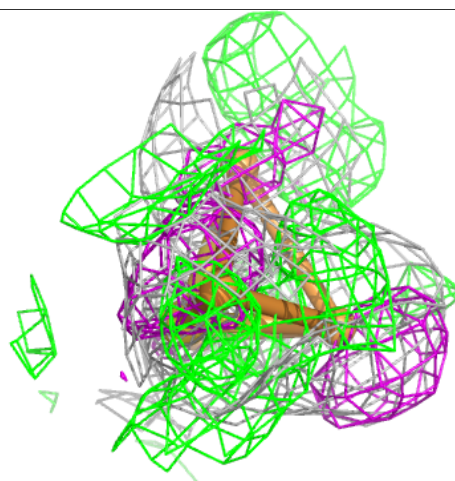
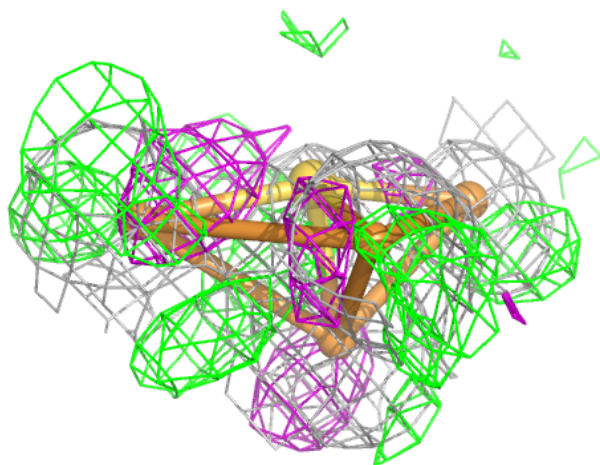
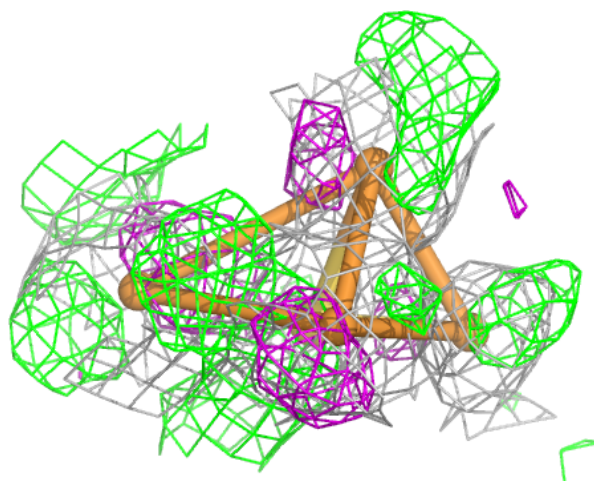
**Electron density around CUA B 710:**

$2mF_o-DF_c$  (at 0.7 rmsd) in gray  
 $mF_o-DF_c$  (at 3 rmsd) in purple (negative)  
and green (positive)

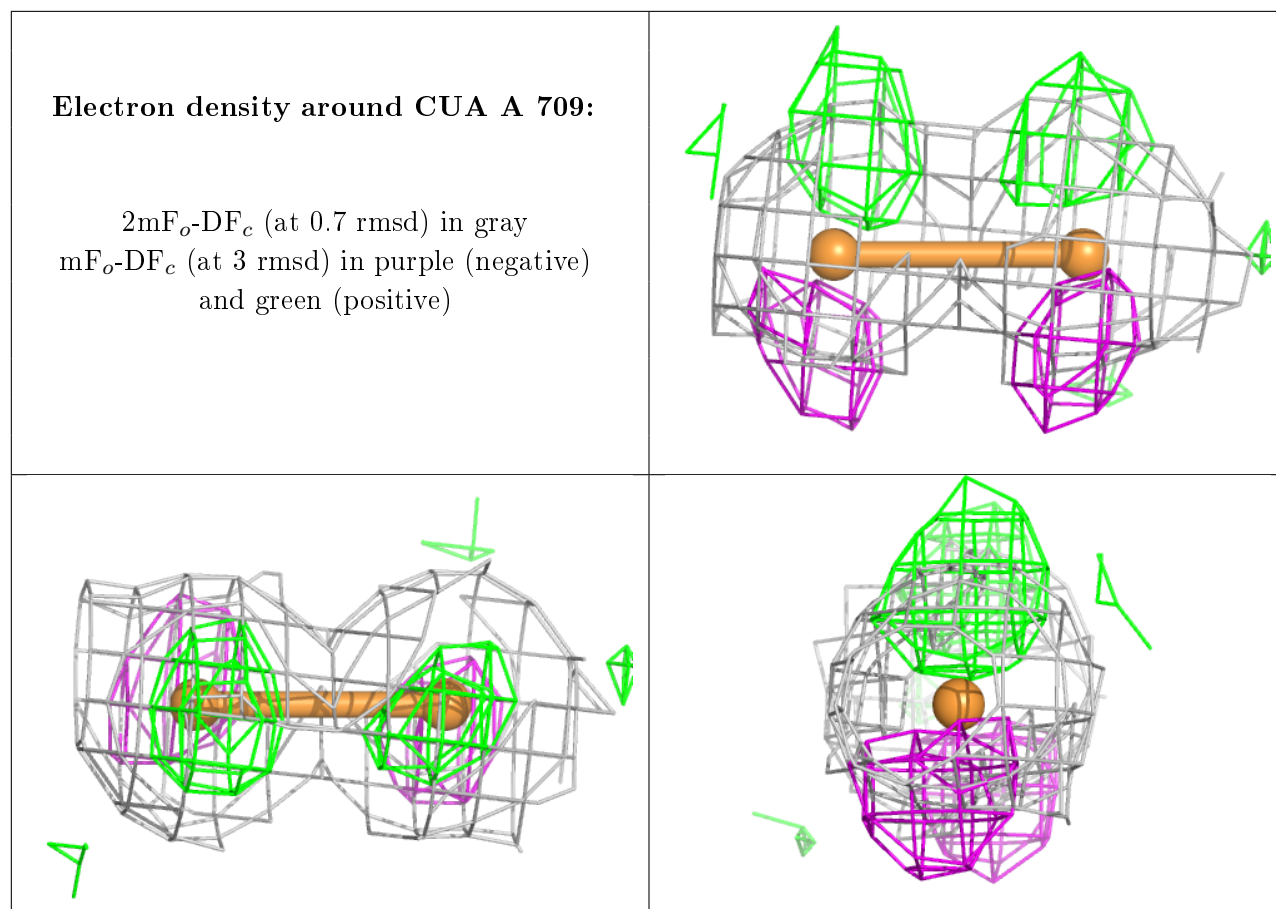


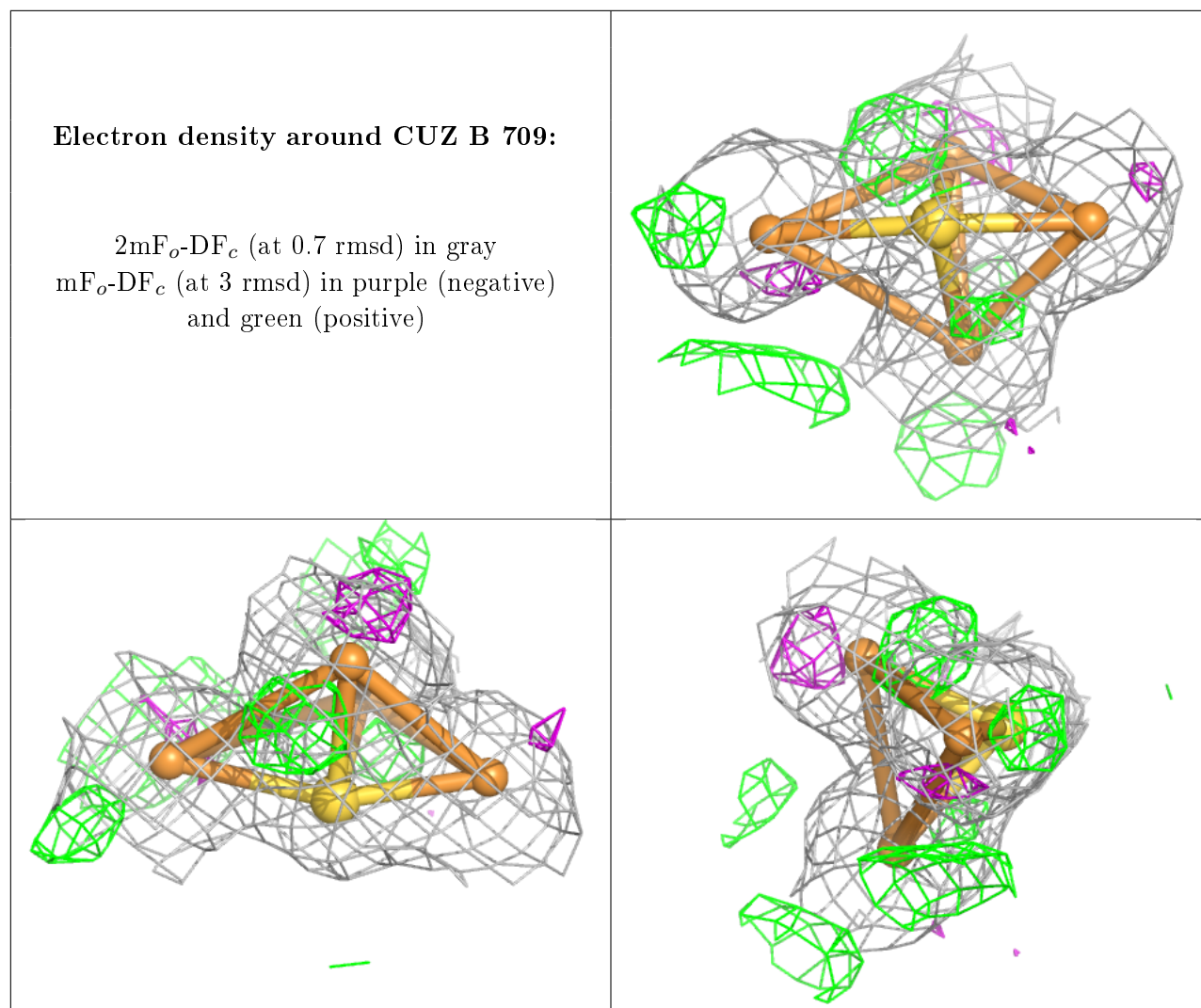
**Electron density around CUZ A 708:**

$2mF_o-DF_c$  (at 0.7 rmsd) in gray  
 $mF_o-DF_c$  (at 3 rmsd) in purple (negative)  
and green (positive)









## 6.5 Other polymers [i](#)

There are no such residues in this entry.