



Full wwPDB X-ray Structure Validation Report ⓘ

Jan 4, 2021 – 04:21 PM GMT

PDB ID : 7AQ5
Title : Pseudomonas stutzeri nitrous oxide reductase mutant, H583N
Authors : Zhang, L.; Bill, E.; Kroneck, P.M.H.; Einsle, O.
Deposited on : 2020-10-20
Resolution : 1.70 Å(reported)

This is a Full wwPDB X-ray Structure Validation Report for a publicly released PDB entry.

We welcome your comments at validation@mail.wwpdb.org

A user guide is available at

<https://www.wwpdb.org/validation/2017/XrayValidationReportHelp>

with specific help available everywhere you see the ⓘ symbol.

The following versions of software and data (see [references ⓘ](#)) were used in the production of this report:

MolProbity : 4.02b-467
Mogul : 1.8.5 (274361), CSD as541be (2020)
Xtriage (Phenix) : 1.13
EDS : 2.16
buster-report : 1.1.7 (2018)
Percentile statistics : 20191225.v01 (using entries in the PDB archive December 25th 2019)
Refmac : 5.8.0158
CCP4 : 7.0.044 (Gargrove)
Ideal geometry (proteins) : Engh & Huber (2001)
Ideal geometry (DNA, RNA) : Parkinson et al. (1996)
Validation Pipeline (wwPDB-VP) : 2.16

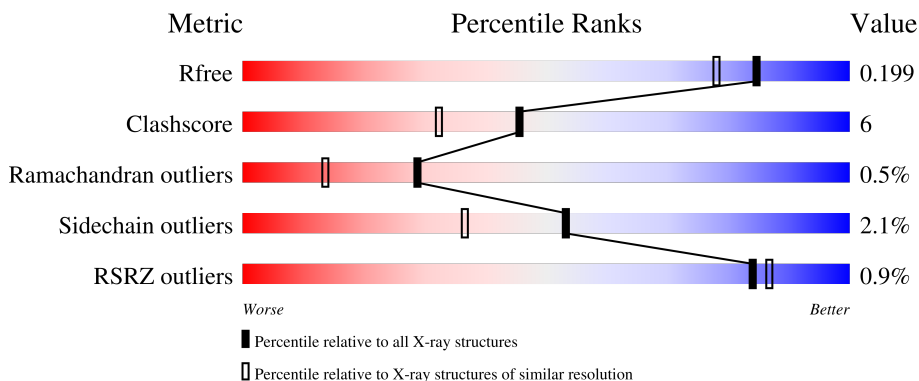
1 Overall quality at a glance

The following experimental techniques were used to determine the structure:

X-RAY DIFFRACTION

The reported resolution of this entry is 1.70 Å.

Percentile scores (ranging between 0-100) for global validation metrics of the entry are shown in the following graphic. The table shows the number of entries on which the scores are based.



Metric	Whole archive (#Entries)	Similar resolution (#Entries, resolution range(Å))
R_{free}	130704	4298 (1.70-1.70)
Clashscore	141614	4695 (1.70-1.70)
Ramachandran outliers	138981	4610 (1.70-1.70)
Sidechain outliers	138945	4610 (1.70-1.70)
RSRZ outliers	127900	4222 (1.70-1.70)

The table below summarises the geometric issues observed across the polymeric chains and their fit to the electron density. The red, orange, yellow and green segments of the lower bar indicate the fraction of residues that contain outliers for ≥ 3 , 2, 1 and 0 types of geometric quality criteria respectively. A grey segment represents the fraction of residues that are not modelled. The numeric value for each fraction is indicated below the corresponding segment, with a dot representing fractions $\leq 5\%$. The upper red bar (where present) indicates the fraction of residues that have poor fit to the electron density. The numeric value is given above the bar.

Mol	Chain	Length	Quality of chain
1	A	646	 78% 9% 11%
1	B	646	 77% 13% 9%

The following table lists non-polymeric compounds, carbohydrate monomers and non-standard residues in protein, DNA, RNA chains that are outliers for geometric or electron-density-fit criteria:

Mol	Type	Chain	Res	Chirality	Geometry	Clashes	Electron density
5	FMT	B	705	-	-	X	-
5	FMT	B	706	-	-	X	-

2 Entry composition

There are 12 unique types of molecules in this entry. The entry contains 9942 atoms, of which 12 are hydrogens and 0 are deuteriums.

In the tables below, the ZeroOcc column contains the number of atoms modelled with zero occupancy, the AltConf column contains the number of residues with at least one atom in alternate conformation and the Trace column contains the number of residues modelled with at most 2 atoms.

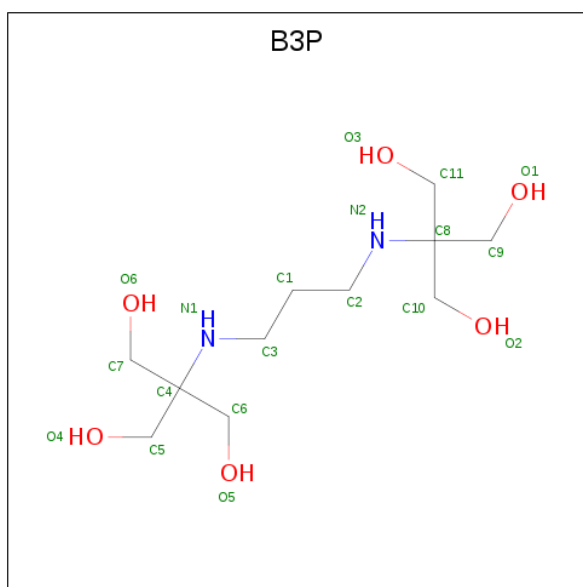
- Molecule 1 is a protein called Nitrous-oxide reductase.

Mol	Chain	Residues	Atoms					ZeroOcc	AltConf	Trace
			Total	C	N	O	S			
1	A	573	Total	C	N	O	S	0	5	0
			4527	2864	776	856	31			
1	B	586	Total	C	N	O	S	0	2	0
			4619	2921	795	871	32			

There are 18 discrepancies between the modelled and reference sequences:

Chain	Residue	Modelled	Actual	Comment	Reference
A	583	ASN	HIS	engineered mutation	UNP P19573
A	639	TRP	-	expression tag	UNP P19573
A	640	SER	-	expression tag	UNP P19573
A	641	HIS	-	expression tag	UNP P19573
A	642	PRO	-	expression tag	UNP P19573
A	643	GLN	-	expression tag	UNP P19573
A	644	PHE	-	expression tag	UNP P19573
A	645	GLU	-	expression tag	UNP P19573
A	646	LYS	-	expression tag	UNP P19573
B	583	ASN	HIS	engineered mutation	UNP P19573
B	639	TRP	-	expression tag	UNP P19573
B	640	SER	-	expression tag	UNP P19573
B	641	HIS	-	expression tag	UNP P19573
B	642	PRO	-	expression tag	UNP P19573
B	643	GLN	-	expression tag	UNP P19573
B	644	PHE	-	expression tag	UNP P19573
B	645	GLU	-	expression tag	UNP P19573
B	646	LYS	-	expression tag	UNP P19573

- Molecule 2 is 2-[3-(2-HYDROXY-1,1-DIHYDROXYMETHYL-ETHYLAMINO)-PROPYL AMINO]-2-HYDROXYMETHYL-PROPANE-1,3-DIOL (three-letter code: B3P) (formula: C₁₁H₂₆N₂O₆).



Mol	Chain	Residues	Atoms			ZeroOcc	AltConf	
2	A	1	Total	C	N	O	0	0
			19	11	2	6		
2	B	1	Total	C	N	O	0	0
			19	11	2	6		

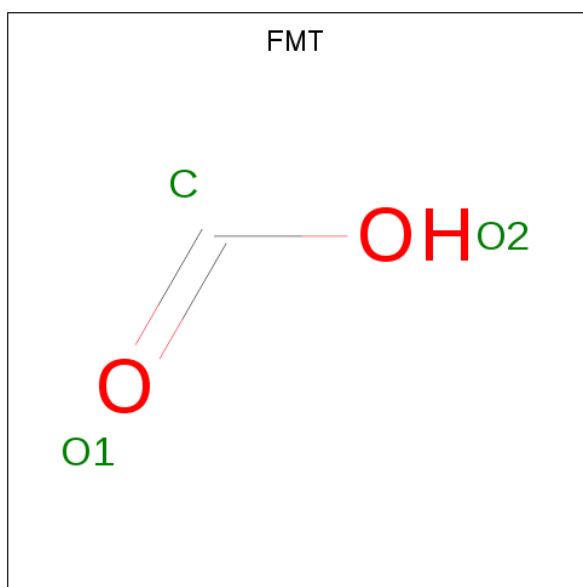
- Molecule 3 is SODIUM ION (three-letter code: NA) (formula: Na).

Mol	Chain	Residues	Atoms		ZeroOcc	AltConf
3	B	1	Total	Na	0	0
			1	1		
3	A	1	Total	Na	0	0
			1	1		

- Molecule 4 is CALCIUM ION (three-letter code: CA) (formula: Ca).

Mol	Chain	Residues	Atoms		ZeroOcc	AltConf
4	B	1	Total	Ca	0	0
			1	1		
4	A	1	Total	Ca	0	0
			1	1		

- Molecule 5 is FORMIC ACID (three-letter code: FMT) (formula: CH₂O₂).

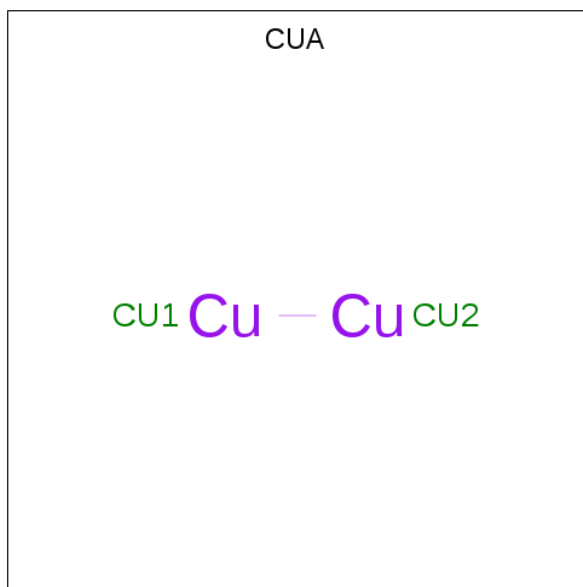


Mol	Chain	Residues	Atoms	ZeroOcc	AltConf
5	A	1	Total C O 3 1 2	0	0
5	A	1	Total C O 3 1 2	0	0
5	B	1	Total C O 3 1 2	0	0
5	B	1	Total C O 3 1 2	0	0

- Molecule 6 is CHLORIDE ION (three-letter code: CL) (formula: Cl).

Mol	Chain	Residues	Atoms	ZeroOcc	AltConf
6	B	1	Total Cl 1 1	0	0
6	A	2	Total Cl 2 2	0	0

- Molecule 7 is DINUCLEAR COPPER ION (three-letter code: CUA) (formula: Cu₂) (labeled as "Ligand of Interest" by depositor).

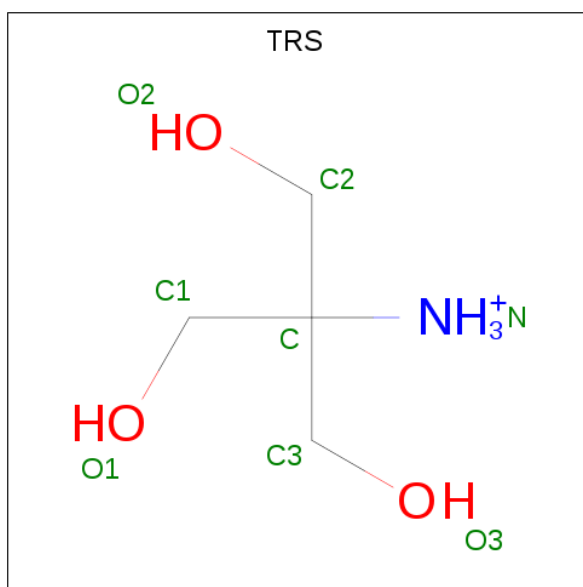


Mol	Chain	Residues	Atoms	ZeroOcc	AltConf
7	A	1	Total Cu 2 2	0	0
7	B	1	Total Cu 2 2	0	0

- Molecule 8 is ZINC ION (three-letter code: ZN) (formula: Zn).

Mol	Chain	Residues	Atoms	ZeroOcc	AltConf
8	A	2	Total Zn 2 2	0	0

- Molecule 9 is 2-AMINO-2-HYDROXYMETHYL-PROPANE-1,3-DIOL (three-letter code: TRS) (formula: C₄H₁₂NO₃).

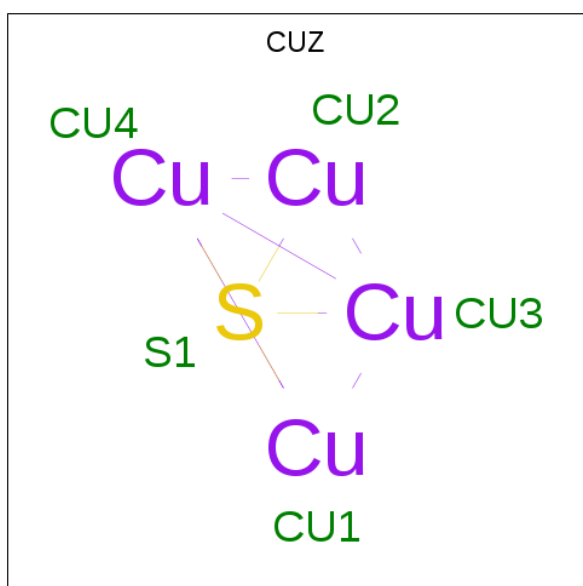


Mol	Chain	Residues	Atoms					ZeroOcc	AltConf
			Total	C	H	N	O		
9	A	1	20	4	12	1	3	0	0

- Molecule 10 is POTASSIUM ION (three-letter code: K) (formula: K).

Mol	Chain	Residues	Atoms		ZeroOcc	AltConf
			Total	K		
10	B	1	1	1	0	0

- Molecule 11 is (MU-4-SULFIDO)-TETRA-NUCLEAR COPPER ION (three-letter code: CUZ) (formula: Cu₄S) (labeled as "Ligand of Interest" by depositor).



Mol	Chain	Residues	Atoms			ZeroOcc	AltConf
11	B	1	Total	Cu	S	0	0
			5	4	1		

- Molecule 12 is water.

Mol	Chain	Residues	Atoms		ZeroOcc	AltConf
12	A	402	Total	O	0	0
			402	402		
12	B	305	Total	O	0	0
			305	305		

4 Data and refinement statistics

Property	Value	Source
Space group	P 1 21 1	Depositor
Cell constants a, b, c, α , β , γ	69.29Å 76.45Å 109.48Å 90.00° 93.38° 90.00°	Depositor
Resolution (Å)	62.65 – 1.70 62.65 – 1.70	Depositor EDS
% Data completeness (in resolution range)	78.0 (62.65-1.70) 78.1 (62.65-1.70)	Depositor EDS
R_{merge}	(Not available)	Depositor
R_{sym}	(Not available)	Depositor
$\langle I/\sigma(I) \rangle$ ¹	1.15 (at 1.70Å)	Xtrriage
Refinement program	PHENIX 1.13_2998	Depositor
R, R_{free}	0.161 , 0.199 0.162 , 0.199	Depositor DCC
R_{free} test set	4836 reflections (4.94%)	wwPDB-VP
Wilson B-factor (Å ²)	31.7	Xtrriage
Anisotropy	0.035	Xtrriage
Bulk solvent k_{sol} (e/Å ³), B_{sol} (Å ²)	0.34 , 46.5	EDS
L-test for twinning ²	$\langle L \rangle = 0.49$, $\langle L^2 \rangle = 0.32$	Xtrriage
Estimated twinning fraction	No twinning to report.	Xtrriage
F_o, F_c correlation	0.97	EDS
Total number of atoms	9942	wwPDB-VP
Average B, all atoms (Å ²)	39.0	wwPDB-VP

Xtrriage's analysis on translational NCS is as follows: *The largest off-origin peak in the Patterson function is 4.23% of the height of the origin peak. No significant pseudotranslation is detected.*

¹Intensities estimated from amplitudes.

²Theoretical values of $\langle |L| \rangle$, $\langle L^2 \rangle$ for acentric reflections are 0.5, 0.333 respectively for untwinned datasets, and 0.375, 0.2 for perfectly twinned datasets.

5 Model quality [i](#)

5.1 Standard geometry [i](#)

Bond lengths and bond angles in the following residue types are not validated in this section: ZN, CL, NA, K, B3P, CUZ, CUA, TRS, CA, FMT

The Z score for a bond length (or angle) is the number of standard deviations the observed value is removed from the expected value. A bond length (or angle) with $|Z| > 5$ is considered an outlier worth inspection. RMSZ is the root-mean-square of all Z scores of the bond lengths (or angles).

Mol	Chain	Bond lengths		Bond angles	
		RMSZ	# Z >5	RMSZ	# Z >5
1	A	0.52	1/4651 (0.0%)	0.63	1/6298 (0.0%)
1	B	0.46	0/4740	0.62	1/6422 (0.0%)
All	All	0.49	1/9391 (0.0%)	0.62	2/12720 (0.0%)

All (1) bond length outliers are listed below:

Mol	Chain	Res	Type	Atoms	Z	Observed(Å)	Ideal(Å)
1	A	626	HIS	C-N	13.19	1.64	1.34

All (2) bond angle outliers are listed below:

Mol	Chain	Res	Type	Atoms	Z	Observed(°)	Ideal(°)
1	A	303	LEU	CA-CB-CG	-5.72	102.14	115.30
1	B	613	LEU	CA-CB-CG	5.02	126.85	115.30

There are no chirality outliers.

There are no planarity outliers.

5.2 Too-close contacts [i](#)

In the following table, the Non-H and H(model) columns list the number of non-hydrogen atoms and hydrogen atoms in the chain respectively. The H(added) column lists the number of hydrogen atoms added and optimized by MolProbity. The Clashes column lists the number of clashes within the asymmetric unit, whereas Symm-Clashes lists symmetry-related clashes.

Mol	Chain	Non-H	H(model)	H(added)	Clashes	Symm-Clashes
1	A	4527	0	4412	48	0
1	B	4619	0	4482	72	0
2	A	19	0	26	1	0

Continued on next page...

Continued from previous page...

Mol	Chain	Non-H	H(model)	H(added)	Clashes	Symm-Clashes
2	B	19	0	26	2	0
3	A	1	0	0	0	0
3	B	1	0	0	0	0
4	A	1	0	0	0	0
4	B	1	0	0	0	0
5	A	6	0	2	0	0
5	B	6	0	2	5	0
6	A	2	0	0	0	0
6	B	1	0	0	0	0
7	A	2	0	0	0	0
7	B	2	0	0	0	0
8	A	2	0	0	0	0
9	A	8	12	12	0	0
10	B	1	0	0	0	0
11	B	5	0	0	0	0
12	A	402	0	0	5	0
12	B	305	0	0	12	0
All	All	9930	12	8962	116	0

The all-atom clashscore is defined as the number of clashes found per 1000 atoms (including hydrogen atoms). The all-atom clashscore for this structure is 6.

All (116) close contacts within the same asymmetric unit are listed below, sorted by their clash magnitude.

Atom-1	Atom-2	Interatomic distance (Å)	Clash overlap (Å)
1:B:411:ARG:NH1	12:B:801:HOH:O	2.05	0.84
1:B:469:GLU:HG3	1:B:492:GLU:HA	1.60	0.82
1:A:467:HIS:NE2	1:B:508:LYS:HD2	2.04	0.73
1:B:632:ARG:HD3	12:B:803:HOH:O	1.88	0.73
1:A:352:ILE:HA	1:A:355:LEU:HD22	1.70	0.73
1:B:580:ASP:OD2	12:B:802:HOH:O	2.08	0.72
1:B:559:GLU:HG3	1:B:634:MET:CE	2.20	0.71
1:B:260:LYS:HE2	12:B:848:HOH:O	1.91	0.70
1:A:313:SER:O	1:A:314:LYS:HB3	1.91	0.69
2:B:701:B3P:HN2	5:B:706:FMT:H	1.60	0.67
1:B:416:GLU:O	1:B:418:VAL:HG12	1.95	0.65
1:A:208:PHE:CD1	1:B:634:MET:HG2	2.33	0.64
1:A:85:LEU:HD22	1:A:92:GLU:HA	1.80	0.64
1:B:559:GLU:HG3	1:B:634:MET:HE3	1.80	0.63
1:B:145:LEU:HD22	1:B:158:ILE:HD12	1.81	0.62
1:B:508:LYS:HG3	1:B:579:GLU:HB3	1.83	0.60

Continued on next page...

Continued from previous page...

Atom-1	Atom-2	Interatomic distance (Å)	Clash overlap (Å)
1:A:284:GLU:OE2	12:A:801:HOH:O	2.16	0.60
1:A:632:ARG:HD3	12:A:862:HOH:O	2.01	0.60
1:B:269:ARG:HH21	1:B:269:ARG:CG	2.15	0.59
1:A:313:SER:O	1:A:314:LYS:CB	2.50	0.58
2:B:701:B3P:N2	5:B:706:FMT:H	2.17	0.58
1:A:59:LYS:HD2	1:A:59:LYS:O	2.03	0.58
1:A:433:HIS:HB2	1:A:494:HIS:O	2.04	0.57
1:A:101:VAL:HG21	1:A:124:LEU:HD22	1.86	0.57
1:B:417:LYS:N	1:B:417:LYS:HD3	2.20	0.56
1:B:59:LYS:NZ	1:B:66:GLU:OE1	2.35	0.56
1:B:508:LYS:HG2	1:B:579:GLU:CD	2.27	0.55
2:A:701:B3P:O6	2:A:701:B3P:H32	2.07	0.55
1:A:128:CYS:HB3	1:A:148:ASN:O	2.06	0.55
1:A:508:LYS:HE3	12:B:828:HOH:O	2.07	0.54
1:B:269:ARG:HG3	1:B:269:ARG:HH21	1.72	0.54
1:B:508:LYS:NZ	12:B:810:HOH:O	2.37	0.54
1:B:299:LYS:HB2	1:B:299:LYS:NZ	2.24	0.53
1:A:563:LYS:HE2	1:A:636:GLU:OE1	2.09	0.53
1:B:578:ILE:HG22	1:B:579:GLU:O	2.09	0.52
1:A:255[A]:CYS:HB3	1:A:274:TRP:CD1	2.45	0.52
1:B:182:LEU:HD22	1:B:191:VAL:HG22	1.91	0.52
1:B:164:LYS:HE2	12:B:994:HOH:O	2.08	0.51
1:B:85:LEU:HD22	1:B:92:GLU:HA	1.92	0.51
1:A:275:VAL:CG1	1:A:321:VAL:HG21	2.40	0.51
1:B:615:TRP:CH2	1:B:632:ARG:HD2	2.45	0.51
1:A:382:HIS:CE1	1:A:433:HIS:CE1	2.98	0.51
1:B:272:ARG:NH1	12:B:809:HOH:O	2.44	0.50
1:A:70:TYR:HB2	1:A:87:VAL:HB	1.93	0.50
1:B:358:LEU:HD22	1:B:369:VAL:HG11	1.92	0.50
1:A:129:HIS:HB3	1:A:494:HIS:HD2	1.75	0.50
1:B:382:HIS:CE1	1:B:433:HIS:CE1	3.00	0.49
1:A:621:PHE:HB2	1:B:492:GLU:OE2	2.11	0.49
1:A:238:ASN:ND2	1:A:256:TYR:CZ	2.80	0.49
1:B:531:LEU:H	5:B:705:FMT:C	2.25	0.49
1:A:591:GLY:HA2	1:B:125:ASN:OD1	2.13	0.48
1:A:595:GLU:HG3	1:A:620:TRP:CH2	2.47	0.48
1:A:467:HIS:CE1	1:B:508:LYS:HD2	2.48	0.48
1:B:530:ASN:HA	5:B:705:FMT:H	1.95	0.48
1:B:559:GLU:HG3	1:B:634:MET:HE1	1.95	0.48
1:A:181:ARG:HD3	1:A:243:ASP:OD1	2.14	0.47
1:A:283:VAL:HG13	1:A:303:LEU:HD13	1.96	0.47

Continued on next page...

Continued from previous page...

Atom-1	Atom-2	Interatomic distance (Å)	Clash overlap (Å)
1:B:128:CYS:HB3	1:B:148:ASN:O	2.14	0.47
1:B:508:LYS:HG2	1:B:579:GLU:OE1	2.13	0.47
1:B:272:ARG:HE	1:B:322:PRO:HD3	1.77	0.47
1:A:379:GLY:N	1:A:380:PRO:HD3	2.30	0.47
1:B:431:PRO:HA	1:B:453:SER:HA	1.97	0.47
1:B:238:ASN:O	1:B:255:CYS:HB2	2.16	0.46
1:B:70:TYR:HB2	1:B:87:VAL:HB	1.96	0.46
1:B:429:TYR:CD1	1:B:457:LYS:HD2	2.50	0.46
1:A:453:SER:O	1:A:469:GLU:HG3	2.16	0.45
1:B:379:GLY:N	1:B:380:PRO:HD3	2.31	0.45
1:B:435:HIS:HE1	12:B:825:HOH:O	1.98	0.45
1:A:216:TYR:CD1	1:A:234:ILE:HG23	2.52	0.45
1:A:275:VAL:HG12	1:A:321:VAL:HG21	1.98	0.45
1:A:407:GLU:HG2	12:A:1038:HOH:O	2.17	0.45
1:A:613:LEU:HD11	1:A:632:ARG:HG2	1.99	0.45
1:B:529:ILE:O	5:B:705:FMT:H	2.16	0.45
1:A:493:PRO:O	1:A:494:HIS:CB	2.64	0.45
1:B:129:HIS:HD2	1:B:148:ASN:HD21	1.65	0.45
1:A:438:LEU:HB2	1:A:444:ALA:HA	1.98	0.44
1:A:559:GLU:HA	1:A:632:ARG:O	2.17	0.44
12:A:1033:HOH:O	1:B:627:MET:HE1	2.17	0.43
1:A:592:VAL:HG13	1:A:604:ILE:HD13	2.00	0.43
1:B:579:GLU:O	1:B:580:ASP:HB2	2.17	0.43
1:B:347:CYS:O	1:B:373:GLU:HA	2.18	0.43
1:B:632:ARG:NH1	12:B:803:HOH:O	2.17	0.43
1:A:380:PRO:HA	1:A:394:THR:O	2.18	0.43
1:B:128:CYS:HB2	1:B:147:ILE:CD1	2.49	0.43
1:B:428:HIS:HA	1:B:429:TYR:CG	2.54	0.43
1:A:350:ILE:HG12	1:A:370:ILE:HD13	2.01	0.43
1:A:347:CYS:O	1:A:373:GLU:HA	2.18	0.43
1:A:414:LYS:HE3	12:A:1091:HOH:O	2.18	0.43
1:B:508:LYS:HD3	1:B:508:LYS:HA	1.88	0.43
1:A:493:PRO:O	1:A:494:HIS:HB3	2.18	0.43
1:A:125:ASN:OD1	1:B:591:GLY:HA2	2.19	0.42
1:B:379:GLY:N	1:B:380:PRO:CD	2.81	0.42
1:B:58:GLN:OE1	1:B:447:LYS:HD2	2.20	0.42
1:B:185:VAL:HG13	1:B:186:PRO:HA	2.00	0.42
1:B:384:THR:CG2	1:B:434:LEU:HG	2.50	0.42
1:B:283:VAL:HG13	1:B:303:LEU:HD13	2.01	0.42
1:B:455:PHE:HB3	1:B:457:LYS:HZ3	1.85	0.42
1:B:386:ASP:OD2	1:B:390:ASN:HB2	2.20	0.42

Continued on next page...

Continued from previous page...

Atom-1	Atom-2	Interatomic distance (Å)	Clash overlap (Å)
1:A:129:HIS:HD2	1:A:494:HIS:CD2	2.37	0.42
1:A:213:GLU:OE2	1:A:213:GLU:N	2.31	0.42
1:B:363:LEU:HD13	1:B:368:ASP:HB2	2.01	0.42
1:B:559:GLU:HA	1:B:632:ARG:O	2.20	0.41
1:B:105:THR:HG22	1:B:595:GLU:HG2	2.03	0.41
1:A:595:GLU:HB2	1:A:620:TRP:CZ3	2.56	0.41
1:B:382:HIS:O	1:B:393:THR:HA	2.21	0.41
1:B:396:PHE:HA	1:B:431:PRO:HD2	2.03	0.41
1:B:407:GLU:HG2	12:B:873:HOH:O	2.19	0.41
1:A:627:MET:HE3	1:B:196:GLU:OE2	2.21	0.40
1:B:417:LYS:N	1:B:417:LYS:CD	2.85	0.40
1:A:347:CYS:O	1:A:374:PRO:HD2	2.21	0.40
1:B:285:ALA:HA	12:B:1051:HOH:O	2.20	0.40
1:B:597:SER:HB3	1:B:598:PRO:HD2	2.02	0.40
1:A:613:LEU:HD11	1:A:632:ARG:HB3	2.04	0.40
1:B:322:PRO:HA	1:B:323:LYS:HA	1.88	0.40
1:B:552:ALA:HA	1:B:553:PRO:HA	1.87	0.40
1:B:559:GLU:OE2	1:B:632:ARG:NH2	2.53	0.40

There are no symmetry-related clashes.

5.3 Torsion angles [i](#)

5.3.1 Protein backbone [i](#)

In the following table, the Percentiles column shows the percent Ramachandran outliers of the chain as a percentile score with respect to all X-ray entries followed by that with respect to entries of similar resolution.

The Analysed column shows the number of residues for which the backbone conformation was analysed, and the total number of residues.

Mol	Chain	Analysed	Favoured	Allowed	Outliers	Percentiles	
1	A	574/646 (89%)	553 (96%)	18 (3%)	3 (0%)	29	13
1	B	586/646 (91%)	562 (96%)	21 (4%)	3 (0%)	29	13
All	All	1160/1292 (90%)	1115 (96%)	39 (3%)	6 (0%)	29	13

All (6) Ramachandran outliers are listed below:

Mol	Chain	Res	Type
1	A	314	LYS
1	A	342	LYS
1	B	342	LYS
1	B	176	ALA
1	B	416	GLU
1	A	176	ALA

5.3.2 Protein sidechains [i](#)

In the following table, the Percentiles column shows the percent sidechain outliers of the chain as a percentile score with respect to all X-ray entries followed by that with respect to entries of similar resolution.

The Analysed column shows the number of residues for which the sidechain conformation was analysed, and the total number of residues.

Mol	Chain	Analysed	Rotameric	Outliers	Percentiles
1	A	496/545 (91%)	483 (97%)	13 (3%)	46 28
1	B	503/545 (92%)	494 (98%)	9 (2%)	59 43
All	All	999/1090 (92%)	977 (98%)	22 (2%)	53 34

All (22) residues with a non-rotameric sidechain are listed below:

Mol	Chain	Res	Type
1	A	57	LYS
1	A	59	LYS
1	A	128	CYS
1	A	211	GLN
1	A	238	ASN
1	A	255[A]	CYS
1	A	255[B]	CYS
1	A	275	VAL
1	A	355	LEU
1	A	511	ASP
1	A	576	ASP
1	A	620	TRP
1	A	621	PHE
1	B	78	HIS
1	B	255	CYS
1	B	269	ARG
1	B	417	LYS
1	B	483	LEU

Continued on next page...

Continued from previous page...

Mol	Chain	Res	Type
1	B	576	ASP
1	B	580	ASP
1	B	613	LEU
1	B	621	PHE

Sometimes sidechains can be flipped to improve hydrogen bonding and reduce clashes. All (1) such sidechains are listed below:

Mol	Chain	Res	Type
1	B	129	HIS

5.3.3 RNA [i](#)

There are no RNA molecules in this entry.

5.4 Non-standard residues in protein, DNA, RNA chains [i](#)

There are no non-standard protein/DNA/RNA residues in this entry.

5.5 Carbohydrates [i](#)

There are no monosaccharides in this entry.

5.6 Ligand geometry [i](#)

Of 20 ligands modelled in this entry, 10 are monoatomic - leaving 10 for Mogul analysis.

There are no bond length outliers.

There are no bond angle outliers.

There are no chirality outliers.

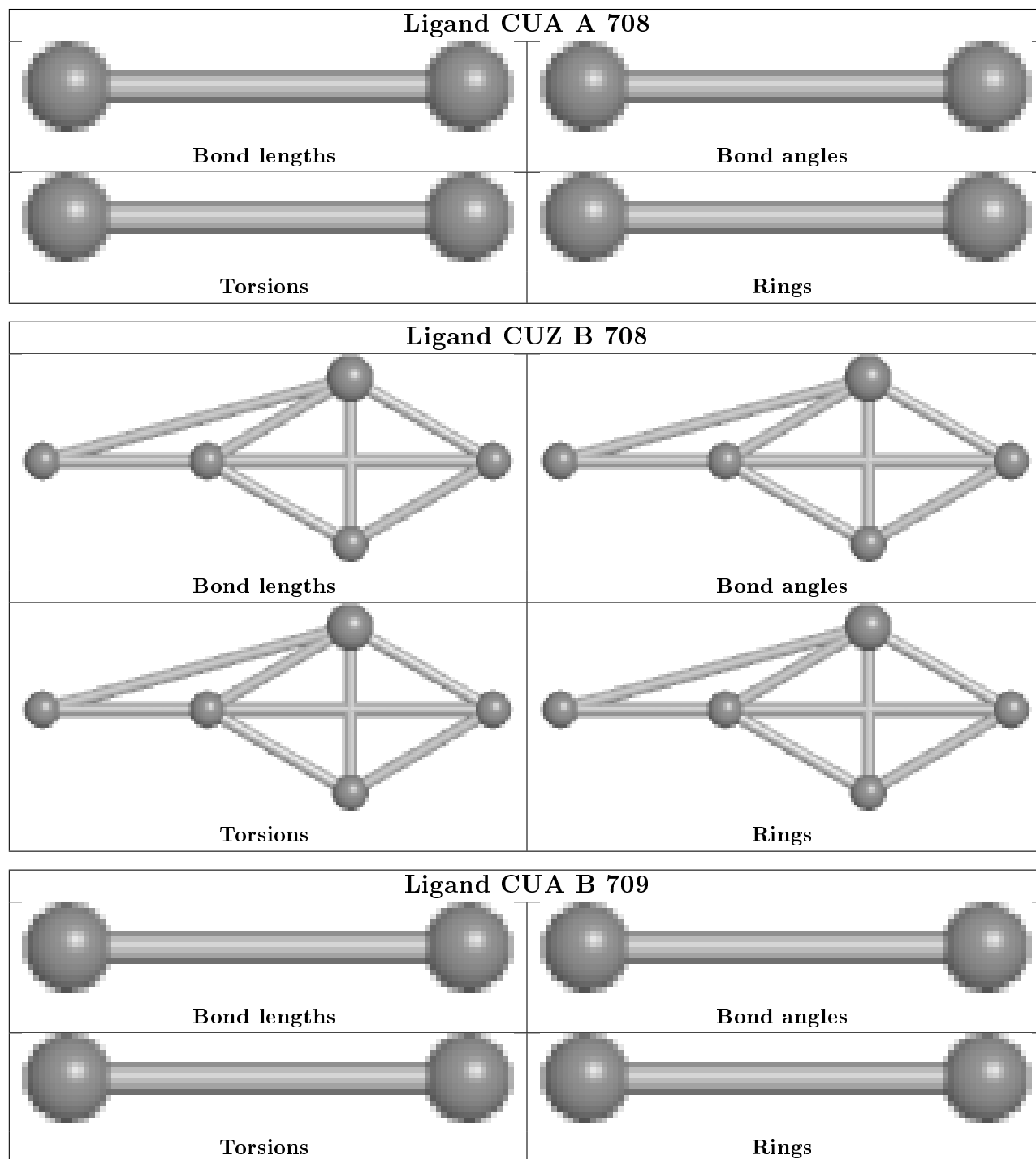
There are no torsion outliers.

There are no ring outliers.

No monomer is involved in short contacts.

The following is a two-dimensional graphical depiction of Mogul quality analysis of bond lengths, bond angles, torsion angles, and ring geometry for all instances of the Ligand of Interest. In addition, ligands with molecular weight > 250 and outliers as shown on the validation Tables will also be included. For torsion angles, if less than 5% of the Mogul distribution of torsion angles is within 10 degrees of the torsion angle in question, then that torsion angle is considered an outlier.

Any bond that is central to one or more torsion angles identified as an outlier by Mogul will be highlighted in the graph. For rings, the root-mean-square deviation (RMSD) between the ring in question and similar rings identified by Mogul is calculated over all ring torsion angles. If the average RMSD is greater than 60 degrees and the minimal RMSD between the ring in question and any Mogul-identified rings is also greater than 60 degrees, then that ring is considered an outlier. The outliers are highlighted in purple. The color gray indicates Mogul did not find sufficient equivalents in the CSD to analyse the geometry.



5.7 Other polymers [i](#)

There are no such residues in this entry.

5.8 Polymer linkage issues [i](#)

The following chains have linkage breaks:

Mol	Chain	Number of breaks
1	A	1

All chain breaks are listed below:

Model	Chain	Residue-1	Atom-1	Residue-2	Atom-2	Distance (Å)
1	A	626:HIS	C	627:MET	N	1.64

6 Fit of model and data [i](#)

6.1 Protein, DNA and RNA chains [i](#)

In the following table, the column labelled '#RSRZ > 2' contains the number (and percentage) of RSRZ outliers, followed by percent RSRZ outliers for the chain as percentile scores relative to all X-ray entries and entries of similar resolution. The OWAB column contains the minimum, median, 95th percentile and maximum values of the occupancy-weighted average B-factor per residue. The column labelled 'Q < 0.9' lists the number of (and percentage) of residues with an average occupancy less than 0.9.

Mol	Chain	Analysed	<RSRZ>	#RSRZ > 2	OWAB(Å ²)	Q < 0.9
1	A	573/646 (88%)	-0.37	6 (1%) 82 85	20, 33, 57, 94	0
1	B	586/646 (90%)	-0.29	4 (0%) 87 90	21, 39, 66, 91	0
All	All	1159/1292 (89%)	-0.33	10 (0%) 84 87	20, 36, 65, 94	0

All (10) RSRZ outliers are listed below:

Mol	Chain	Res	Type	RSRZ
1	B	621	PHE	3.1
1	A	57	LYS	3.0
1	B	624	ALA	3.0
1	A	56	SER	2.6
1	A	55	GLU	2.5
1	B	364	ALA	2.5
1	B	623	HIS	2.5
1	A	256	TYR	2.3
1	A	257	ASN	2.2
1	A	365	ASP	2.2

6.2 Non-standard residues in protein, DNA, RNA chains [i](#)

There are no non-standard protein/DNA/RNA residues in this entry.

6.3 Carbohydrates [i](#)

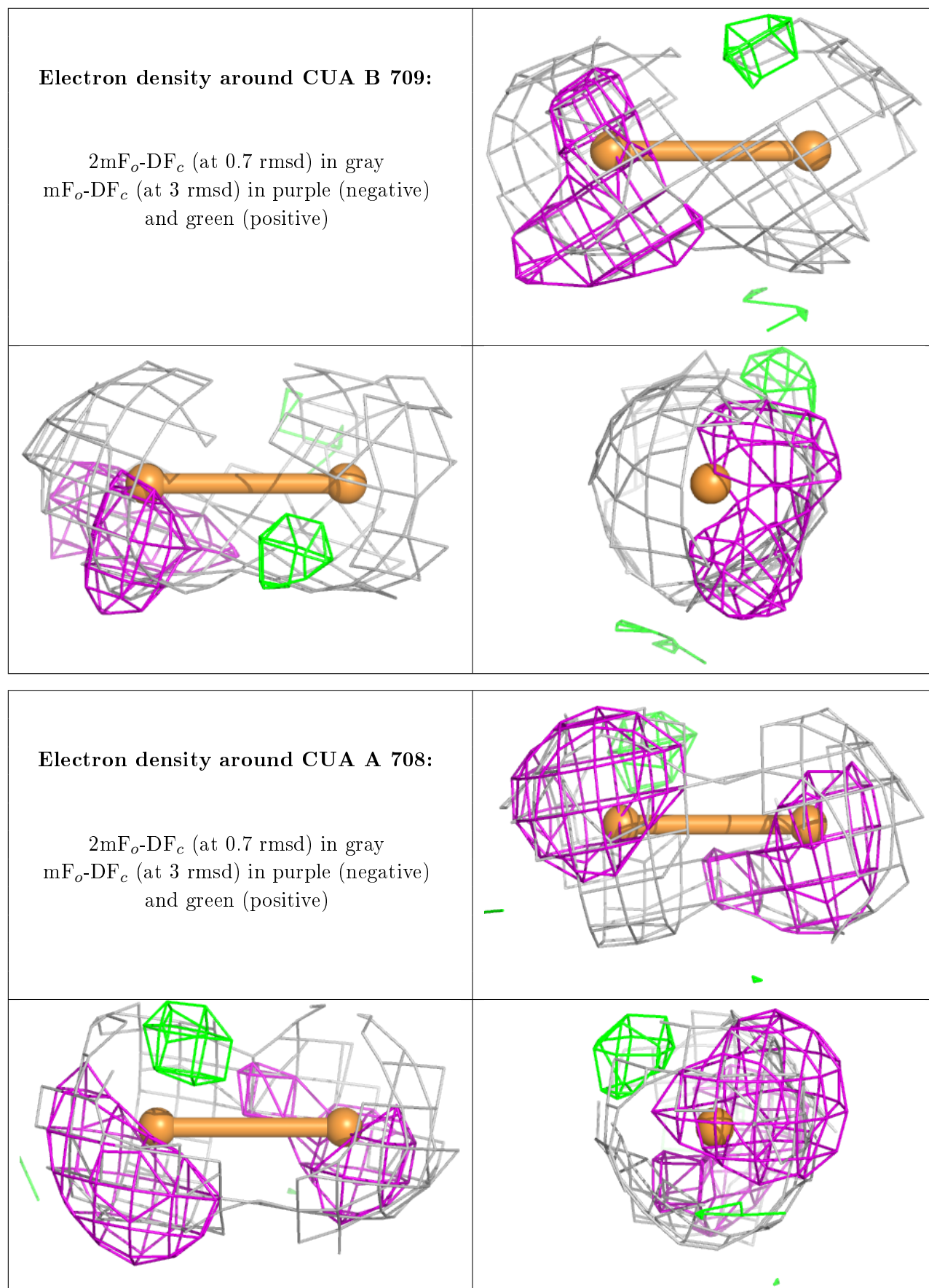
There are no monosaccharides in this entry.

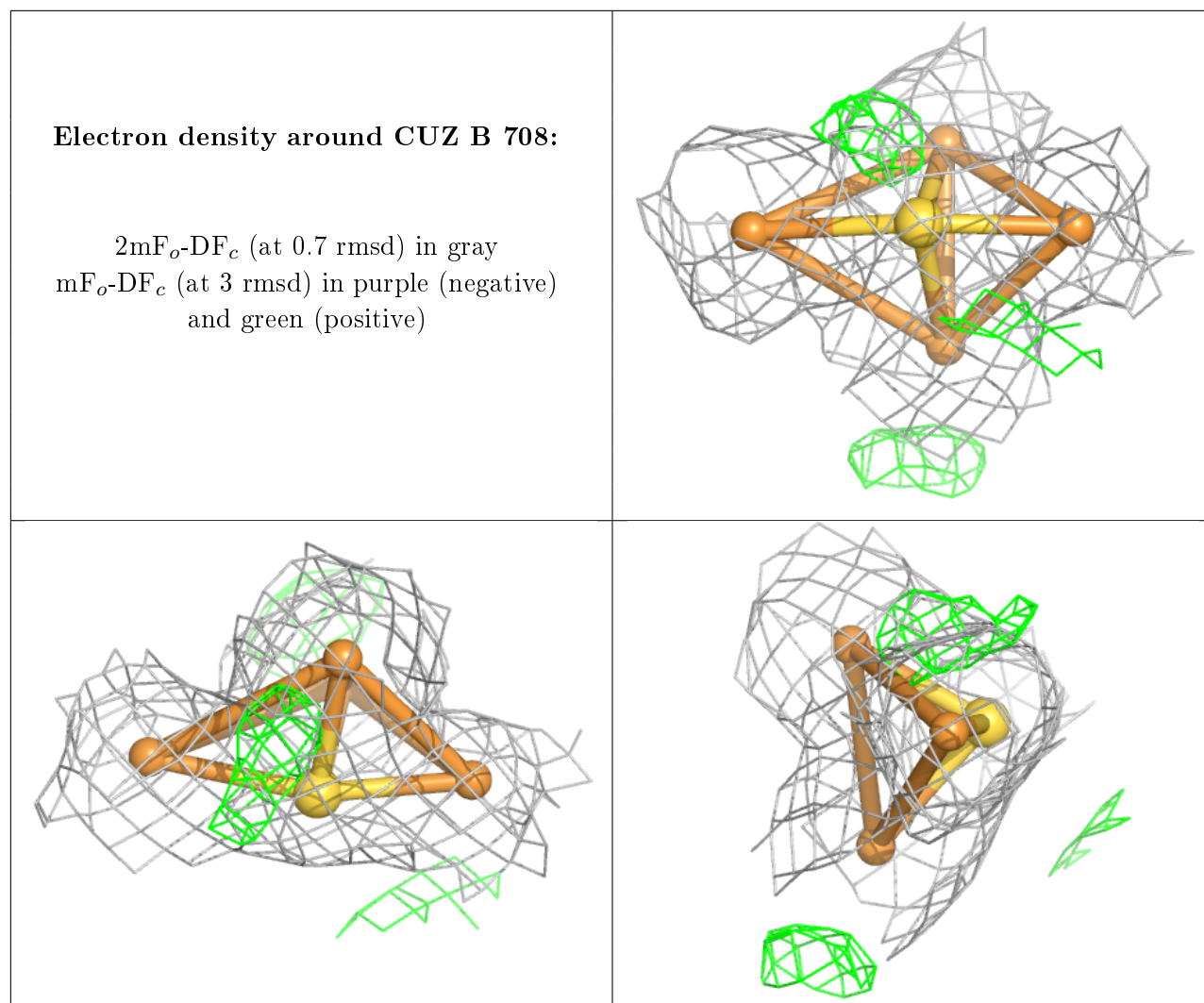
6.4 Ligands

In the following table, the Atoms column lists the number of modelled atoms in the group and the number defined in the chemical component dictionary. The B-factors column lists the minimum, median, 95th percentile and maximum values of B factors of atoms in the group. The column labelled 'Q<0.9' lists the number of atoms with occupancy less than 0.9.

Mol	Type	Chain	Res	Atoms	RSCC	RSR	B-factors(Å ²)	Q<0.9
5	FMT	A	704	3/3	0.75	0.25	52,52,63,64	0
5	FMT	A	705	3/3	0.81	0.12	73,73,78,80	0
2	B3P	A	701	19/19	0.86	0.12	35,44,54,56	0
2	B3P	B	701	19/19	0.91	0.10	31,39,46,47	0
9	TRS	A	710	8/8	0.92	0.18	55,66,69,69	0
7	CUA	B	709	2/2	0.93	0.05	61,61,61,62	1
3	NA	B	702	1/1	0.95	0.06	33,33,33,33	1
4	CA	A	703	1/1	0.96	0.04	39,39,39,39	1
7	CUA	A	708	2/2	0.96	0.05	48,48,48,57	0
5	FMT	B	705	3/3	0.96	0.30	55,55,58,64	0
6	CL	B	707	1/1	0.96	0.07	35,35,35,35	1
5	FMT	B	706	3/3	0.97	0.16	34,34,37,48	0
8	ZN	A	709	1/1	0.97	0.12	82,82,82,82	0
11	CUZ	B	708	5/5	0.98	0.06	31,42,57,60	5
10	K	B	704	1/1	0.99	0.05	26,26,26,26	1
8	ZN	A	711	1/1	0.99	0.05	50,50,50,50	0
4	CA	B	703	1/1	0.99	0.12	28,28,28,28	1
6	CL	A	707	1/1	0.99	0.07	56,56,56,56	1
3	NA	A	702	1/1	0.99	0.07	24,24,24,24	1
6	CL	A	706	1/1	0.99	0.08	24,24,24,24	1

The following is a graphical depiction of the model fit to experimental electron density of all instances of the Ligand of Interest. In addition, ligands with molecular weight > 250 and outliers as shown on the geometry validation Tables will also be included. Each fit is shown from different orientation to approximate a three-dimensional view.





6.5 Other polymers [i](#)

There are no such residues in this entry.