



Full wwPDB X-ray Structure Validation Report ⓘ

Oct 26, 2023 – 12:35 AM EDT

PDB ID : 3AR8
Title : Calcium pump crystal structure with bound AIF4, TNP-AMP and TG
Authors : Toyoshima, C.; Yonekura, S.; Tsueda, J.; Iwasawa, S.
Deposited on : 2010-11-24
Resolution : 2.60 Å(reported)

This is a Full wwPDB X-ray Structure Validation Report for a publicly released PDB entry.

We welcome your comments at validation@mail.wwpdb.org

A user guide is available at

<https://www.wwpdb.org/validation/2017/XrayValidationReportHelp>

with specific help available everywhere you see the ⓘ symbol.

The types of validation reports are described at

<http://www.wwpdb.org/validation/2017/FAQs#types>.

The following versions of software and data (see [references ⓘ](#)) were used in the production of this report:

MolProbity : 4.02b-467
Mogul : 1.8.5 (274361), CSD as541be (2020)
Xtriage (Phenix) : 1.13
EDS : 2.36
buster-report : 1.1.7 (2018)
Percentile statistics : 20191225.v01 (using entries in the PDB archive December 25th 2019)
Refmac : 5.8.0158
CCP4 : 7.0.044 (Gargrove)
Ideal geometry (proteins) : Engh & Huber (2001)
Ideal geometry (DNA, RNA) : Parkinson et al. (1996)
Validation Pipeline (wwPDB-VP) : 2.36

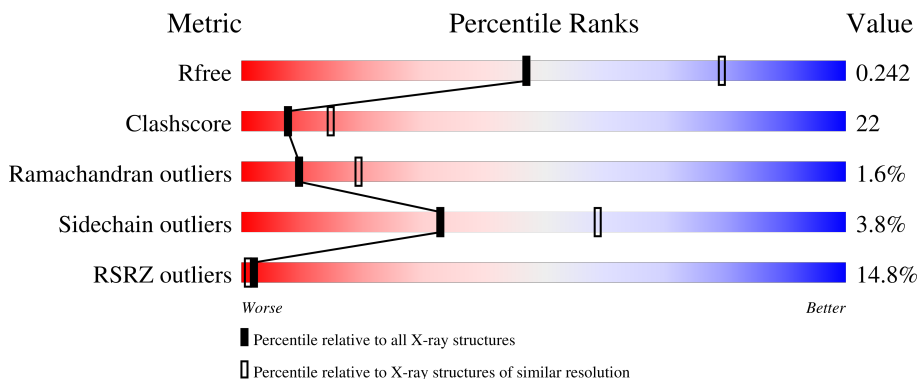
1 Overall quality at a glance

The following experimental techniques were used to determine the structure:

X-RAY DIFFRACTION

The reported resolution of this entry is 2.60 Å.

Percentile scores (ranging between 0-100) for global validation metrics of the entry are shown in the following graphic. The table shows the number of entries on which the scores are based.



Metric	Whole archive (#Entries)	Similar resolution (#Entries, resolution range(Å))
R_{free}	130704	3163 (2.60-2.60)
Clashscore	141614	3518 (2.60-2.60)
Ramachandran outliers	138981	3455 (2.60-2.60)
Sidechain outliers	138945	3455 (2.60-2.60)
RSRZ outliers	127900	3104 (2.60-2.60)

The table below summarises the geometric issues observed across the polymeric chains and their fit to the electron density. The red, orange, yellow and green segments of the lower bar indicate the fraction of residues that contain outliers for ≥ 3 , 2, 1 and 0 types of geometric quality criteria respectively. A grey segment represents the fraction of residues that are not modelled. The numeric value for each fraction is indicated below the corresponding segment, with a dot representing fractions $\leq 5\%$. The upper red bar (where present) indicates the fraction of residues that have poor fit to the electron density. The numeric value is given above the bar.

Mol	Chain	Length	Quality of chain
1	A	995	

2 Entry composition

There are 7 unique types of molecules in this entry. The entry contains 7871 atoms, of which 0 are hydrogens and 0 are deuteriums.

In the tables below, the ZeroOcc column contains the number of atoms modelled with zero occupancy, the AltConf column contains the number of residues with at least one atom in alternate conformation and the Trace column contains the number of residues modelled with at most 2 atoms.

- Molecule 1 is a protein called Sarcoplasmic/endoplasmic reticulum calcium ATPase 1.

Mol	Chain	Residues	Atoms					ZeroOcc	AltConf	Trace
			Total	C	N	O	S			
1	A	995	7674	4878	1287	1452	57	1	0	0

There are 2 discrepancies between the modelled and reference sequences:

Chain	Residue	Modelled	Actual	Comment	Reference
A	1A	ACE	-	acetylation	UNP P04191
A	994	GLY	ASP	SEE REMARK 999	UNP P04191

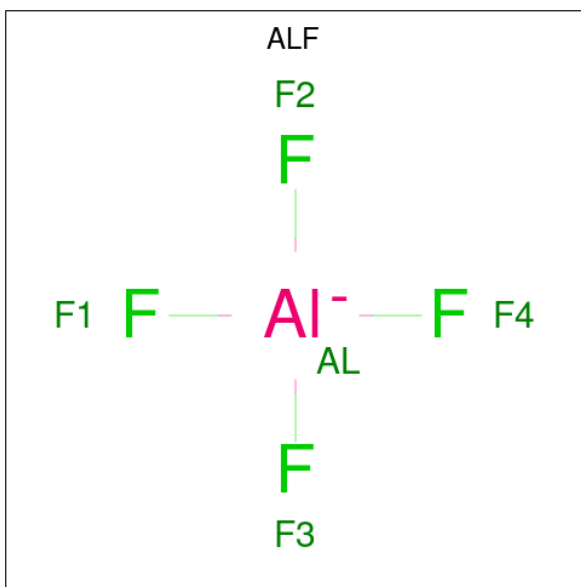
- Molecule 2 is SODIUM ION (three-letter code: NA) (formula: Na).

Mol	Chain	Residues	Atoms		ZeroOcc	AltConf
2	A	1	Total	Na	0	0
			1	1		

- Molecule 3 is MAGNESIUM ION (three-letter code: MG) (formula: Mg).

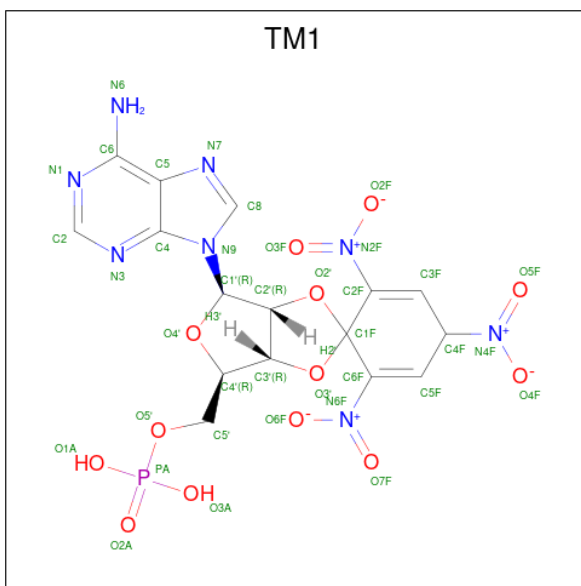
Mol	Chain	Residues	Atoms		ZeroOcc	AltConf
3	A	1	Total	Mg	0	0
			1	1		

- Molecule 4 is TETRAFLUOROALUMINATE ION (three-letter code: ALF) (formula: AlF_4).



Mol	Chain	Residues	Atoms			ZeroOcc	AltConf
4	A	1	Total	Al	F	0	0
			5	1	4		

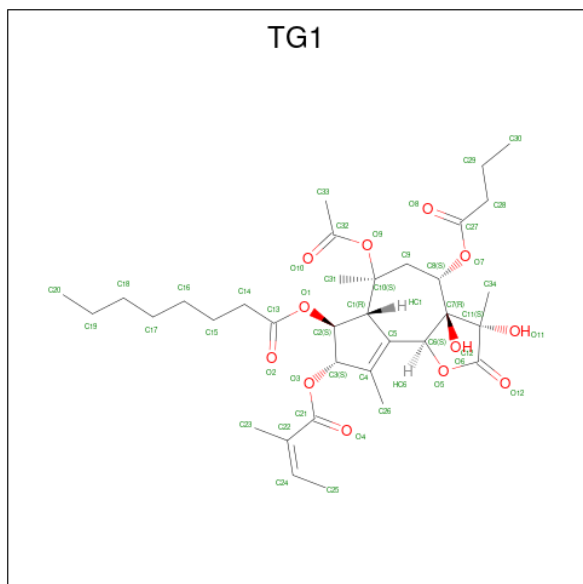
- Molecule 5 is 2',3'-O-[(1r)-2,4,6-trinitrocyclohexa-2,5-diene-1,1-diy]adenosine 5'-(dihydrogen phosphate) (three-letter code: TM1) (formula: C₁₆H₁₅N₈O₁₃P).



Mol	Chain	Residues	Atoms					ZeroOcc	AltConf
5	A	1	Total	C	N	O	P	0	0
			38	16	8	13	1		

- Molecule 6 is OCTANOIC ACID [3S-[3ALPHA, 3ABETA, 4ALPHA, 6BETA, 6ABETA, 7BETA, 8ALPHA(Z), 9BALPHA]]-6-(ACETYLOXY)-2,3,-3A,4,5,6,6A,7,8,9B-DECAHYD

RO-3,3A-DIHYDROXY-3,6,9-TRIMETHYL-8-[(2-METHYL-1-OXO-2-BUTENYL)OXY]-2-OXO-4-(1-OXOBUTOXY)-AZULENO[4,5-B]FURAN-7-YL ESTER (three-letter code: TG1) (formula: $C_{34}H_{50}O_{12}$).



Mol	Chain	Residues	Atoms		ZeroOcc	AltConf
6	A	1	Total	C O	0	0
			46	34 12		

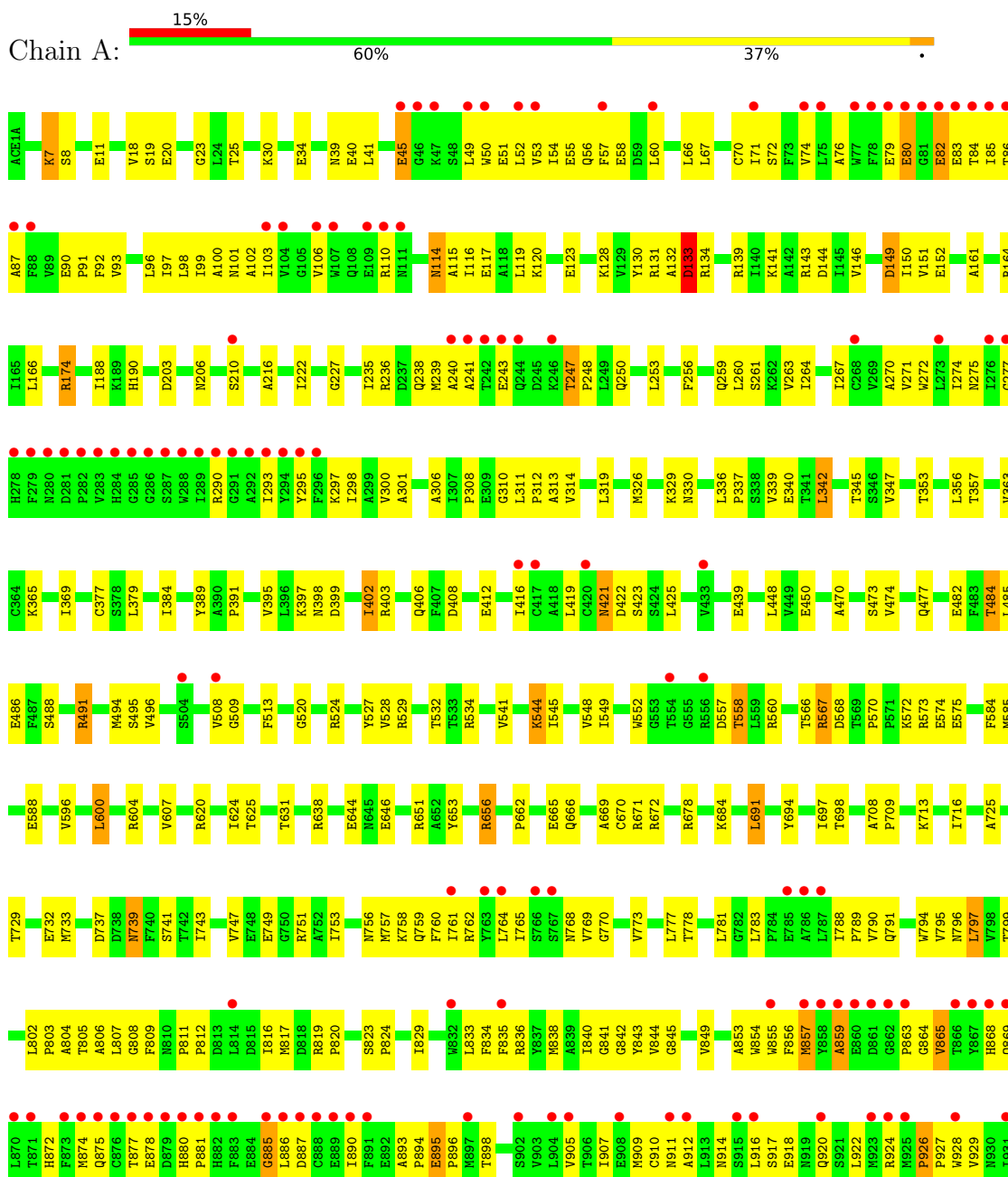
- Molecule 7 is water.

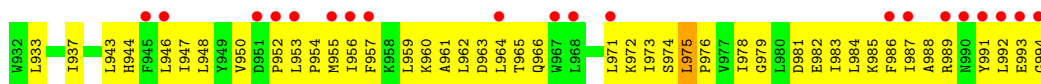
Mol	Chain	Residues	Atoms		ZeroOcc	AltConf
7	A	106	Total	O	0	0
			106	106		

3 Residue-property plots

These plots are drawn for all protein, RNA, DNA and oligosaccharide chains in the entry. The first graphic for a chain summarises the proportions of the various outlier classes displayed in the second graphic. The second graphic shows the sequence view annotated by issues in geometry and electron density. Residues are color-coded according to the number of geometric quality criteria for which they contain at least one outlier: green = 0, yellow = 1, orange = 2 and red = 3 or more. A red dot above a residue indicates a poor fit to the electron density ($RSRZ > 2$). Stretches of 2 or more consecutive residues without any outlier are shown as a green connector. Residues present in the sample, but not in the model, are shown in grey.

- Molecule 1: Sarcoplasmic/endoplasmic reticulum calcium ATPase 1





4 Data and refinement statistics

Property	Value	Source
Space group	C 1 2 1	Depositor
Cell constants a, b, c, α , β , γ	176.86Å 69.87Å 141.81Å 90.00° 106.71° 90.00°	Depositor
Resolution (Å)	14.99 – 2.60 26.95 – 2.60	Depositor EDS
% Data completeness (in resolution range)	98.8 (14.99-2.60) 99.9 (26.95-2.60)	Depositor EDS
R_{merge}	0.06	Depositor
R_{sym}	(Not available)	Depositor
$\langle I/\sigma(I) \rangle$ ¹	2.20 (at 2.60Å)	Xtrriage
Refinement program	CNS	Depositor
R, R_{free}	0.226 , 0.253 0.214 , 0.242	Depositor DCC
R_{free} test set	2531 reflections (4.94%)	wwPDB-VP
Wilson B-factor (Å ²)	61.8	Xtrriage
Anisotropy	0.132	Xtrriage
Bulk solvent k_{sol} (e/Å ³), B_{sol} (Å ²)	0.32 , 64.3	EDS
L-test for twinning ²	$\langle L \rangle = 0.49$, $\langle L^2 \rangle = 0.32$	Xtrriage
Estimated twinning fraction	No twinning to report.	Xtrriage
F_o, F_c correlation	0.94	EDS
Total number of atoms	7871	wwPDB-VP
Average B, all atoms (Å ²)	91.0	wwPDB-VP

Xtrriage's analysis on translational NCS is as follows: *The largest off-origin peak in the Patterson function is 4.66% of the height of the origin peak. No significant pseudotranslation is detected.*

¹Intensities estimated from amplitudes.

²Theoretical values of $\langle |L| \rangle$, $\langle L^2 \rangle$ for acentric reflections are 0.5, 0.333 respectively for untwinned datasets, and 0.375, 0.2 for perfectly twinned datasets.

5 Model quality [i](#)

5.1 Standard geometry [i](#)

Bond lengths and bond angles in the following residue types are not validated in this section: NA, MG, ACE, ALF, TM1, TG1

The Z score for a bond length (or angle) is the number of standard deviations the observed value is removed from the expected value. A bond length (or angle) with $|Z| > 5$ is considered an outlier worth inspection. RMSZ is the root-mean-square of all Z scores of the bond lengths (or angles).

Mol	Chain	Bond lengths		Bond angles	
		RMSZ	# Z >5	RMSZ	# Z >5
1	A	0.35	0/7813	0.58	0/10594

There are no bond length outliers.

There are no bond angle outliers.

There are no chirality outliers.

There are no planarity outliers.

5.2 Too-close contacts [i](#)

In the following table, the Non-H and H(model) columns list the number of non-hydrogen atoms and hydrogen atoms in the chain respectively. The H(added) column lists the number of hydrogen atoms added and optimized by MolProbity. The Clashes column lists the number of clashes within the asymmetric unit, whereas Symm-Clashes lists symmetry-related clashes.

Mol	Chain	Non-H	H(model)	H(added)	Clashes	Symm-Clashes
1	A	7674	0	7765	342	0
2	A	1	0	0	0	0
3	A	1	0	0	0	0
4	A	5	0	0	1	0
5	A	38	0	12	0	0
6	A	46	0	50	3	0
7	A	106	0	0	3	0
All	All	7871	0	7827	342	0

The all-atom clashscore is defined as the number of clashes found per 1000 atoms (including hydrogen atoms). The all-atom clashscore for this structure is 22.

All (342) close contacts within the same asymmetric unit are listed below, sorted by their clash magnitude.

Atom-1	Atom-2	Interatomic distance (Å)	Clash overlap (Å)
1:A:836:ARG:HG3	1:A:984:LEU:HD13	1.45	0.98
1:A:421:ASN:ND2	1:A:423:SER:H	1.66	0.93
1:A:549:ILE:HD11	1:A:596:VAL:HG21	1.50	0.92
1:A:484:THR:HB	1:A:496:VAL:HG12	1.52	0.92
1:A:988:ALA:HA	1:A:992:LEU:HD12	1.56	0.88
1:A:762:ARG:HG2	1:A:829:ILE:HD11	1.56	0.86
1:A:41:LEU:HG	1:A:236:ARG:HG3	1.59	0.85
1:A:90:GLU:HB2	1:A:790:VAL:HG22	1.62	0.82
1:A:737:ASP:OD2	1:A:739:ASN:HB2	1.79	0.81
1:A:833:LEU:HD13	1:A:836:ARG:HH21	1.45	0.81
1:A:844:VAL:HG22	1:A:907:ILE:HG21	1.63	0.79
1:A:342:LEU:HA	1:A:716:ILE:HD13	1.65	0.79
1:A:30:LYS:O	1:A:34:GLU:HG3	1.82	0.78
1:A:49:LEU:HD13	1:A:110:ARG:HD2	1.63	0.78
1:A:247:THR:HG22	1:A:250:GLN:H	1.47	0.78
1:A:86:THR:HG21	1:A:956:ILE:HA	1.66	0.77
1:A:20:GLU:HA	1:A:150:ILE:CD1	2.14	0.77
1:A:311:LEU:HD11	1:A:761:ILE:HD13	1.68	0.74
1:A:567:ARG:HD2	1:A:570:PRO:HA	1.70	0.73
1:A:412:GLU:OE1	1:A:529:ARG:HD2	1.91	0.71
1:A:97:ILE:HA	1:A:100:ALA:HB3	1.72	0.71
1:A:421:ASN:HD22	1:A:422:ASP:N	1.87	0.71
1:A:950:VAL:HG12	1:A:952:PRO:HD2	1.72	0.71
1:A:794:TRP:HH2	1:A:943:LEU:HB3	1.55	0.71
1:A:79:GLU:HG2	1:A:87:ALA:HB2	1.71	0.71
1:A:421:ASN:HD22	1:A:423:SER:H	1.36	0.71
1:A:326:MET:HE1	1:A:339:VAL:HG22	1.74	0.70
1:A:116:ILE:H	1:A:116:ILE:HD12	1.56	0.69
1:A:981:ASP:HA	1:A:984:LEU:HD12	1.74	0.69
1:A:557:ASP:HA	1:A:638:ARG:HH12	1.57	0.69
1:A:311:LEU:HB3	1:A:312:PRO:HD3	1.76	0.68
1:A:972:LYS:HA	1:A:972:LYS:HE2	1.74	0.68
1:A:49:LEU:HA	1:A:52:LEU:HD12	1.76	0.68
1:A:260:LEU:HD11	1:A:306:ALA:HB1	1.76	0.68
1:A:52:LEU:HD13	1:A:110:ARG:HB2	1.76	0.68
1:A:271:VAL:HG12	1:A:275:ASN:ND2	2.09	0.67
1:A:342:LEU:HG	1:A:716:ILE:HG21	1.76	0.67
1:A:917:SER:OG	1:A:920:GLN:HB2	1.94	0.67
1:A:45:GLU:H	1:A:45:GLU:CD	1.97	0.66
1:A:749:GLU:O	1:A:753:ILE:HG12	1.96	0.66
1:A:773:VAL:HB	1:A:845:GLY:HA3	1.78	0.65
1:A:486:GLU:O	1:A:491:ARG:NH2	2.26	0.65

Continued on next page...

Continued from previous page...

Atom-1	Atom-2	Interatomic distance (Å)	Clash overlap (Å)
1:A:527:TYR:CD1	1:A:534:ARG:HD3	2.32	0.65
1:A:895:GLU:H	1:A:896:PRO:HD2	1.62	0.64
1:A:975:LEU:N	1:A:976:PRO:HD2	2.13	0.64
1:A:777:LEU:HB2	1:A:849:VAL:HG21	1.80	0.63
1:A:765:ILE:O	1:A:769:VAL:HG23	1.97	0.63
1:A:23:GLY:HA3	1:A:130:TYR:O	1.99	0.63
1:A:791:GLN:O	1:A:795:VAL:HG23	1.99	0.63
1:A:802:LEU:HB2	1:A:803:PRO:HD3	1.80	0.63
1:A:342:LEU:HD12	1:A:733:MET:CE	2.29	0.62
1:A:557:ASP:HA	1:A:638:ARG:HH22	1.63	0.62
1:A:691:LEU:HB3	1:A:698:THR:HG21	1.82	0.62
1:A:174:ARG:HB2	1:A:216:ALA:HB3	1.81	0.62
1:A:114:ASN:HB3	1:A:117:GLU:HG2	1.81	0.62
1:A:791:GLN:NE2	1:A:959:LEU:HD21	2.15	0.62
1:A:85:ILE:HG23	1:A:86:THR:HG23	1.82	0.62
1:A:174:ARG:HG3	1:A:188:ILE:CD1	2.31	0.61
1:A:342:LEU:HD22	1:A:747:VAL:HG22	1.82	0.61
1:A:119:LEU:HD22	1:A:239:MET:HE3	1.82	0.61
1:A:369:ILE:HG13	1:A:528:VAL:CG1	2.30	0.61
1:A:369:ILE:HG13	1:A:528:VAL:HG13	1.82	0.61
1:A:342:LEU:HA	1:A:716:ILE:CD1	2.29	0.61
1:A:926:PRO:O	1:A:929:VAL:HG23	2.00	0.61
1:A:297:LYS:HA	1:A:300:VAL:HG22	1.82	0.61
1:A:8:SER:OG	1:A:11:GLU:HG3	2.01	0.61
1:A:116:ILE:HD12	1:A:116:ILE:N	2.16	0.61
1:A:353:THR:HA	1:A:357:THR:OG1	2.01	0.60
1:A:271:VAL:HG12	1:A:275:ASN:HD21	1.66	0.60
1:A:557:ASP:HA	1:A:638:ARG:NH1	2.16	0.60
1:A:756:ASN:HB3	1:A:808:GLY:HA2	1.83	0.60
1:A:482:GLU:CD	1:A:573:ARG:HH12	2.04	0.59
1:A:946:LEU:O	1:A:953:LEU:HD12	2.02	0.59
1:A:986:PHE:HA	1:A:989:ARG:HG2	1.84	0.59
1:A:314:VAL:HG13	1:A:805:THR:OG1	2.02	0.59
1:A:757:MET:HA	1:A:760:PHE:CE2	2.38	0.59
1:A:52:LEU:HA	1:A:55:GLU:CD	2.23	0.59
1:A:114:ASN:HD21	1:A:116:ILE:HD13	1.68	0.59
1:A:491:ARG:NH1	1:A:588:GLU:OE1	2.36	0.59
1:A:119:LEU:HD22	1:A:239:MET:CE	2.33	0.58
1:A:788:ILE:CG1	1:A:791:GLN:HG3	2.32	0.58
1:A:893:ALA:O	1:A:896:PRO:HD2	2.03	0.58
1:A:600:LEU:HD13	1:A:600:LEU:O	2.02	0.58

Continued on next page...

Continued from previous page...

Atom-1	Atom-2	Interatomic distance (Å)	Clash overlap (Å)
1:A:836:ARG:O	1:A:840:ILE:HG12	2.03	0.58
1:A:865:VAL:CG1	1:A:869:GLN:HG3	2.32	0.58
1:A:90:GLU:HB2	1:A:790:VAL:CG2	2.33	0.58
1:A:310:GLY:O	1:A:314:VAL:HG23	2.02	0.58
1:A:330:ASN:HB3	1:A:737:ASP:HB2	1.85	0.58
1:A:101:ASN:HD21	1:A:313:ALA:HB2	1.68	0.57
1:A:725:ALA:O	1:A:729:THR:HG23	2.03	0.57
1:A:991:TYR:O	1:A:992:LEU:HG	2.03	0.57
1:A:398:ASN:O	1:A:399:ASP:HB2	2.06	0.56
1:A:326:MET:CG	1:A:749:GLU:HG2	2.35	0.56
1:A:644:GLU:CD	1:A:644:GLU:H	2.08	0.56
1:A:100:ALA:O	1:A:103:ILE:HG22	2.05	0.56
1:A:395:VAL:O	1:A:402:ILE:HD13	2.05	0.56
1:A:557:ASP:HA	1:A:638:ARG:NH2	2.20	0.56
1:A:114:ASN:OD1	1:A:117:GLU:HG2	2.06	0.56
1:A:116:ILE:O	1:A:120:LYS:HG3	2.06	0.56
1:A:898:THR:HG21	1:A:960:LYS:O	2.06	0.56
1:A:978:ILE:O	1:A:982:GLU:HB2	2.06	0.56
1:A:326:MET:HE1	1:A:339:VAL:CG2	2.35	0.56
1:A:508:VAL:HG12	1:A:509:GLY:N	2.21	0.56
1:A:86:THR:HG22	1:A:956:ILE:HG22	1.87	0.56
1:A:549:ILE:CD1	1:A:596:VAL:HG21	2.31	0.56
1:A:557:ASP:CA	1:A:638:ARG:HH22	2.19	0.56
1:A:90:GLU:HB3	1:A:91:PRO:HD3	1.86	0.56
1:A:757:MET:O	1:A:761:ILE:HG12	2.06	0.56
1:A:41:LEU:HB2	1:A:123:GLU:OE1	2.07	0.55
1:A:773:VAL:HG11	1:A:842:GLY:HA2	1.88	0.55
1:A:962:LEU:HB3	1:A:966:GLN:HB2	1.87	0.55
1:A:783:LEU:HD12	1:A:783:LEU:H	1.71	0.55
1:A:560:ARG:HD3	7:A:9001:HOH:O	2.05	0.55
1:A:79:GLU:HG2	1:A:87:ALA:CB	2.37	0.55
1:A:974:SER:C	1:A:976:PRO:HD2	2.26	0.55
1:A:308:PRO:HA	1:A:768:ASN:HD21	1.70	0.55
1:A:751:ARG:HB3	1:A:816:ILE:HD11	1.88	0.55
1:A:70:CYS:O	1:A:74:VAL:HG23	2.06	0.55
1:A:557:ASP:CB	1:A:638:ARG:HH22	2.19	0.55
1:A:778:THR:HG23	1:A:849:VAL:HG22	1.89	0.55
1:A:855:TRP:CD1	1:A:895:GLU:HB3	2.42	0.54
1:A:403:ARG:HB2	1:A:406:GLN:HG2	1.89	0.54
1:A:874:MET:O	1:A:874:MET:HG2	2.07	0.54
1:A:20:GLU:HA	1:A:150:ILE:HD11	1.89	0.54

Continued on next page...

Continued from previous page...

Atom-1	Atom-2	Interatomic distance (Å)	Clash overlap (Å)
1:A:235:ILE:HG22	1:A:239:MET:CE	2.37	0.54
1:A:869:GLN:HA	1:A:872:HIS:ND1	2.22	0.54
1:A:527:TYR:CG	1:A:534:ARG:HD3	2.42	0.54
1:A:236:ARG:HD3	1:A:236:ARG:C	2.28	0.54
1:A:485:LEU:HD22	1:A:584:PHE:CE2	2.42	0.54
1:A:819:ARG:CG	1:A:820:PRO:HD2	2.38	0.54
1:A:52:LEU:HB3	1:A:106:VAL:HG13	1.90	0.54
1:A:963:ASP:H	1:A:966:GLN:HE21	1.54	0.54
1:A:66:LEU:HA	1:A:98:LEU:HD11	1.90	0.53
1:A:412:GLU:OE1	1:A:529:ARG:CD	2.56	0.53
1:A:993:GLU:HG2	1:A:994:GLY:N	2.23	0.53
1:A:49:LEU:HB2	1:A:110:ARG:NH1	2.23	0.53
1:A:944:HIS:O	1:A:947:ILE:HG22	2.09	0.53
1:A:247:THR:HG23	1:A:248:PRO:HD2	1.90	0.53
1:A:926:PRO:HB3	1:A:928:TRP:CE2	2.43	0.53
1:A:20:GLU:HA	1:A:150:ILE:HD13	1.90	0.53
1:A:174:ARG:HD3	1:A:216:ALA:HB3	1.90	0.53
1:A:905:VAL:O	1:A:909:MET:HG2	2.09	0.53
1:A:572:LYS:HB2	1:A:575:GLU:HG2	1.90	0.52
1:A:646:GLU:OE2	1:A:651:ARG:NH1	2.39	0.52
1:A:805:THR:HG22	1:A:805:THR:O	2.08	0.52
1:A:604:ARG:HB2	1:A:607:VAL:HG23	1.91	0.52
1:A:795:VAL:HA	1:A:799:THR:OG1	2.09	0.52
1:A:887:ASP:HB3	1:A:890:ILE:HG13	1.92	0.52
1:A:85:ILE:HD11	1:A:955:MET:SD	2.48	0.52
1:A:781:LEU:HD23	1:A:783:LEU:HD13	1.92	0.52
1:A:844:VAL:CG2	1:A:907:ILE:HG21	2.37	0.52
1:A:80:GLU:O	1:A:84:THR:HB	2.10	0.52
1:A:856:PHE:CE1	1:A:896:PRO:HB3	2.45	0.52
1:A:857:MET:HG2	1:A:865:VAL:O	2.09	0.52
1:A:865:VAL:HG12	1:A:869:GLN:HG3	1.92	0.52
1:A:308:PRO:HG3	1:A:765:ILE:CD1	2.40	0.52
1:A:877:THR:HA	1:A:880:HIS:CE1	2.45	0.52
1:A:574:GLU:H	1:A:574:GLU:CD	2.14	0.51
1:A:770:GLY:HA2	1:A:841:GLY:O	2.10	0.51
1:A:508:VAL:HG12	1:A:509:GLY:H	1.74	0.51
1:A:624:ILE:HG21	1:A:684:LYS:HG2	1.93	0.51
1:A:922:LEU:O	1:A:927:PRO:HD3	2.09	0.51
1:A:146:VAL:O	1:A:149:ASP:HB2	2.10	0.51
1:A:57:PHE:HZ	1:A:99:ILE:HG12	1.75	0.51
1:A:272:TRP:HA	1:A:295:TYR:OH	2.11	0.51

Continued on next page...

Continued from previous page...

Atom-1	Atom-2	Interatomic distance (Å)	Clash overlap (Å)
1:A:494:MET:HG2	1:A:495:SER:N	2.26	0.51
1:A:804:ALA:C	1:A:806:ALA:H	2.13	0.51
1:A:253:LEU:HD23	6:A:1003:TG1:H301	1.93	0.51
1:A:545:ILE:O	1:A:549:ILE:HG12	2.11	0.51
1:A:875:GLN:HG2	1:A:878:GLU:OE2	2.11	0.51
1:A:60:LEU:HD21	1:A:261:SER:HB2	1.93	0.51
1:A:916:LEU:HD21	1:A:933:LEU:HD22	1.93	0.51
1:A:947:ILE:O	1:A:947:ILE:HG12	2.10	0.50
1:A:377:CYS:O	1:A:544:LYS:HG3	2.11	0.50
1:A:773:VAL:CG1	1:A:845:GLY:HA3	2.42	0.50
1:A:796:ASN:O	1:A:797:LEU:HG	2.12	0.50
1:A:697:ILE:HD13	1:A:824:PRO:HG3	1.92	0.50
1:A:907:ILE:O	1:A:910:CYS:HB2	2.11	0.50
1:A:98:LEU:O	1:A:98:LEU:HD23	2.10	0.50
1:A:247:THR:HB	1:A:250:GLN:HG3	1.94	0.50
1:A:342:LEU:HD12	1:A:733:MET:SD	2.52	0.50
1:A:379:LEU:HD12	1:A:548:VAL:HG21	1.93	0.50
1:A:557:ASP:OD1	1:A:558:THR:N	2.45	0.50
1:A:672:ARG:NH2	7:A:4055:HOH:O	2.41	0.50
1:A:72:SER:O	1:A:76:ALA:HB2	2.12	0.50
1:A:235:ILE:HG22	1:A:239:MET:HE1	1.93	0.50
1:A:40:GLU:O	1:A:227:GLY:HA2	2.12	0.50
1:A:836:ARG:HD2	1:A:981:ASP:OD1	2.11	0.50
1:A:854:TRP:O	1:A:859:ALA:HB2	2.12	0.49
1:A:962:LEU:HD22	1:A:966:GLN:OE1	2.12	0.49
1:A:92:PHE:O	1:A:96:LEU:HB2	2.11	0.49
1:A:947:ILE:HD11	1:A:957:PHE:CD2	2.47	0.49
1:A:421:ASN:HD22	1:A:421:ASN:C	2.15	0.49
1:A:301:ALA:HA	1:A:789:PRO:HB3	1.94	0.49
1:A:924:ARG:O	1:A:926:PRO:HD3	2.13	0.49
1:A:644:GLU:CD	1:A:644:GLU:N	2.66	0.49
1:A:203:ASP:OD1	1:A:678:ARG:NH1	2.46	0.49
1:A:979:GLY:O	1:A:983:ILE:HG12	2.13	0.49
1:A:128:LYS:HG2	1:A:139:ARG:HG2	1.95	0.48
1:A:875:GLN:HA	1:A:878:GLU:HG2	1.95	0.48
1:A:947:ILE:HD11	1:A:957:PHE:CG	2.48	0.48
1:A:347:VAL:HG13	1:A:620:ARG:HG3	1.96	0.48
1:A:807:LEU:C	1:A:809:PHE:H	2.17	0.48
1:A:520:GLY:O	1:A:524:ARG:HG3	2.14	0.48
1:A:954:PRO:HB2	1:A:959:LEU:O	2.12	0.48
1:A:836:ARG:NH1	1:A:985:LYS:HG2	2.28	0.48

Continued on next page...

Continued from previous page...

Atom-1	Atom-2	Interatomic distance (Å)	Clash overlap (Å)
1:A:51:GLU:O	1:A:55:GLU:HG2	2.13	0.48
1:A:114:ASN:CB	1:A:117:GLU:HG2	2.43	0.48
1:A:604:ARG:HB2	1:A:607:VAL:CG2	2.44	0.48
1:A:101:ASN:ND2	1:A:313:ALA:HB2	2.28	0.48
1:A:311:LEU:N	1:A:312:PRO:CD	2.77	0.48
1:A:50:TRP:O	1:A:54:ILE:HG12	2.14	0.47
1:A:485:LEU:HD22	1:A:584:PHE:CD2	2.49	0.47
1:A:528:VAL:HG21	1:A:541:VAL:HG11	1.96	0.47
1:A:653:TYR:OH	1:A:672:ARG:NH1	2.47	0.47
1:A:527:TYR:HB3	1:A:534:ARG:CG	2.43	0.47
1:A:950:VAL:O	1:A:954:PRO:HD2	2.14	0.47
1:A:395:VAL:HG12	1:A:402:ILE:HD11	1.95	0.47
1:A:473:SER:O	1:A:477:GLN:HG2	2.13	0.47
1:A:880:HIS:N	1:A:881:PRO:CD	2.78	0.47
1:A:114:ASN:HD22	1:A:115:ALA:N	2.12	0.47
1:A:116:ILE:H	1:A:116:ILE:CD1	2.26	0.47
1:A:363:VAL:HG11	1:A:448:LEU:HD22	1.97	0.47
1:A:769:VAL:HA	6:A:1003:TG1:H231	1.96	0.47
1:A:971:LEU:O	1:A:975:LEU:HB2	2.15	0.47
1:A:389:TYR:HB3	1:A:425:LEU:HD11	1.97	0.47
1:A:885:GLY:C	1:A:886:LEU:HD12	2.36	0.47
1:A:773:VAL:CB	1:A:845:GLY:HA3	2.44	0.46
1:A:50:TRP:CZ2	1:A:54:ILE:HD11	2.50	0.46
1:A:267:ILE:O	1:A:271:VAL:HG23	2.15	0.46
1:A:293:ILE:CG2	1:A:297:LYS:HE3	2.45	0.46
1:A:527:TYR:HB3	1:A:534:ARG:HG2	1.97	0.46
1:A:795:VAL:O	1:A:799:THR:HB	2.16	0.46
1:A:909:MET:SD	1:A:937:ILE:HG23	2.55	0.46
1:A:917:SER:CB	1:A:920:GLN:HB2	2.46	0.46
1:A:20:GLU:HG3	1:A:166:LEU:HD13	1.98	0.46
1:A:247:THR:HG23	1:A:248:PRO:CD	2.45	0.46
1:A:248:PRO:HG2	1:A:340:GLU:OE2	2.16	0.46
1:A:914:ASN:HD22	1:A:922:LEU:HD21	1.81	0.46
1:A:975:LEU:N	1:A:976:PRO:CD	2.78	0.46
1:A:82:GLU:HG3	1:A:83:GLU:N	2.31	0.46
1:A:853:ALA:HB1	1:A:857:MET:CE	2.46	0.46
1:A:843:TYR:OH	1:A:976:PRO:HG2	2.15	0.46
1:A:336:LEU:HB2	1:A:337:PRO:HD3	1.98	0.46
1:A:416:ILE:HD11	1:A:566:THR:CG2	2.46	0.46
1:A:819:ARG:HG3	1:A:820:PRO:HD2	1.97	0.46
1:A:114:ASN:CG	1:A:117:GLU:HG2	2.37	0.45

Continued on next page...

Continued from previous page...

Atom-1	Atom-2	Interatomic distance (Å)	Clash overlap (Å)
1:A:295:TYR:O	1:A:298:ILE:HG12	2.15	0.45
1:A:419:LEU:HD12	1:A:513:PHE:CE2	2.51	0.45
1:A:743:ILE:O	1:A:747:VAL:HG23	2.15	0.45
1:A:890:ILE:HG22	1:A:890:ILE:O	2.16	0.45
1:A:863:PRO:C	1:A:865:VAL:H	2.19	0.45
1:A:624:ILE:CG2	1:A:684:LYS:HG2	2.46	0.45
1:A:18:VAL:HG22	1:A:19:SER:N	2.32	0.45
1:A:670:CYS:HB3	1:A:691:LEU:HD13	1.97	0.45
1:A:791:GLN:HE22	1:A:959:LEU:HD21	1.79	0.45
1:A:975:LEU:HD13	1:A:975:LEU:O	2.16	0.45
1:A:470:ALA:O	1:A:474:VAL:HG23	2.17	0.44
1:A:865:VAL:HG13	1:A:869:GLN:HG3	2.00	0.44
1:A:25:THR:HA	1:A:132:ALA:HB3	1.98	0.44
1:A:759:GLN:OE1	1:A:759:GLN:HA	2.17	0.44
1:A:816:ILE:HG23	1:A:817:MET:HG2	1.99	0.44
1:A:264:ILE:HD11	1:A:306:ALA:HB2	1.98	0.44
1:A:345:THR:HA	1:A:697:ILE:HG22	1.99	0.44
1:A:391:PRO:HB3	1:A:450:GLU:HB3	1.99	0.44
1:A:131:ARG:HG3	1:A:131:ARG:HH11	1.82	0.44
1:A:981:ASP:OD2	1:A:985:LYS:HE3	2.18	0.44
1:A:761:ILE:O	1:A:765:ILE:HG12	2.17	0.44
1:A:600:LEU:HD13	1:A:600:LEU:C	2.38	0.44
1:A:758:LYS:O	1:A:762:ARG:HD2	2.17	0.44
1:A:7:LYS:N	1:A:7:LYS:HD2	2.32	0.44
1:A:99:ILE:HA	1:A:102:ALA:HB3	2.00	0.43
1:A:290:ARG:HA	1:A:293:ILE:HD11	2.00	0.43
1:A:971:LEU:O	1:A:972:LYS:HE2	2.17	0.43
1:A:666:GLN:O	1:A:669:ALA:HB3	2.18	0.43
1:A:491:ARG:HG3	1:A:585:MET:HB2	1.99	0.43
1:A:656:ARG:CA	1:A:656:ARG:HE	2.30	0.43
1:A:788:ILE:HG12	1:A:791:GLN:HG3	1.99	0.43
1:A:788:ILE:HG13	1:A:791:GLN:HG3	1.98	0.43
1:A:948:LEU:HB3	1:A:961:ALA:HB2	2.00	0.43
1:A:773:VAL:HG21	1:A:842:GLY:HA2	2.01	0.43
1:A:259:GLN:O	1:A:263:VAL:HG23	2.19	0.43
1:A:484:THR:HG22	7:A:4106:HOH:O	2.18	0.43
1:A:912:ALA:HB1	1:A:933:LEU:HD11	2.00	0.43
1:A:983:ILE:O	1:A:987:ILE:HG12	2.19	0.43
1:A:963:ASP:H	1:A:966:GLN:NE2	2.15	0.43
1:A:834:PHE:O	1:A:838:MET:HB2	2.18	0.43
1:A:256:PHE:HB2	6:A:1003:TG1:H291	2.01	0.43

Continued on next page...

Continued from previous page...

Atom-1	Atom-2	Interatomic distance (Å)	Clash overlap (Å)
1:A:662:PRO:HG2	1:A:665:GLU:HG3	2.00	0.43
1:A:161:ALA:HA	1:A:210:SER:HB2	2.01	0.43
1:A:166:LEU:HD11	1:A:222:ILE:HB	2.00	0.43
1:A:397:LYS:O	1:A:398:ASN:HB2	2.19	0.43
1:A:557:ASP:HA	1:A:638:ARG:CZ	2.48	0.43
1:A:963:ASP:C	1:A:965:THR:H	2.22	0.43
1:A:329:LYS:O	1:A:330:ASN:HB2	2.19	0.42
1:A:823:SER:HA	1:A:824:PRO:HD3	1.92	0.42
1:A:671:ARG:HD3	1:A:694:TYR:CE2	2.55	0.42
1:A:72:SER:O	1:A:91:PRO:HG3	2.19	0.42
1:A:93:VAL:HA	1:A:96:LEU:HB2	2.00	0.42
1:A:567:ARG:HD2	1:A:570:PRO:CA	2.43	0.42
1:A:49:LEU:O	1:A:53:VAL:HG23	2.20	0.42
1:A:347:VAL:HG22	1:A:620:ARG:HG2	2.01	0.42
1:A:151:VAL:CG1	1:A:152:GLU:N	2.83	0.42
1:A:39:ASN:O	1:A:143:ARG:HA	2.19	0.42
1:A:544:LYS:O	1:A:544:LYS:HD3	2.19	0.42
1:A:898:THR:O	1:A:898:THR:HG22	2.19	0.42
1:A:982:GLU:HA	1:A:982:GLU:OE1	2.20	0.42
1:A:55:GLU:HA	1:A:58:GLU:HG3	2.00	0.42
1:A:365:LYS:HB3	1:A:552:TRP:CH2	2.54	0.42
1:A:408:ASP:OD1	1:A:532:THR:HG23	2.20	0.42
1:A:926:PRO:C	1:A:928:TRP:H	2.23	0.42
1:A:973:ILE:O	1:A:973:ILE:HG22	2.19	0.42
1:A:52:LEU:O	1:A:56:GLN:HG2	2.20	0.42
1:A:811:PRO:HA	1:A:812:PRO:HD2	1.96	0.41
1:A:342:LEU:CD2	1:A:747:VAL:HG22	2.47	0.41
1:A:190:HIS:O	1:A:206:ASN:HA	2.20	0.41
1:A:247:THR:HB	1:A:250:GLN:CG	2.50	0.41
1:A:868:HIS:O	1:A:868:HIS:ND1	2.53	0.41
1:A:256:PHE:CZ	1:A:765:ILE:HD12	2.56	0.41
1:A:708:ALA:HB3	1:A:709:PRO:HD3	2.02	0.41
1:A:739:ASN:OD1	1:A:741:SER:OG	2.39	0.41
1:A:953:LEU:HB2	1:A:954:PRO:CD	2.50	0.41
1:A:764:LEU:CD1	1:A:804:ALA:HB2	2.50	0.41
1:A:835:PHE:O	1:A:838:MET:HB3	2.20	0.41
1:A:270:ALA:O	1:A:274:ILE:HG12	2.20	0.41
1:A:894:PRO:HB2	1:A:960:LYS:N	2.36	0.41
1:A:962:LEU:HA	1:A:966:GLN:NE2	2.35	0.41
1:A:529:ARG:HH22	1:A:568:ASP:CG	2.23	0.41
1:A:625:THR:HA	4:A:998:ALF:F4	2.11	0.41

Continued on next page...

Continued from previous page...

Atom-1	Atom-2	Interatomic distance (Å)	Clash overlap (Å)
1:A:863:PRO:O	1:A:865:VAL:N	2.54	0.41
1:A:308:PRO:HG3	1:A:765:ILE:HD13	2.03	0.41
1:A:488:SER:HB3	1:A:491:ARG:HH21	1.85	0.41
1:A:756:ASN:HD22	1:A:808:GLY:C	2.24	0.41
1:A:50:TRP:CH2	1:A:54:ILE:HD11	2.56	0.40
1:A:67:LEU:O	1:A:71:ILE:HG13	2.21	0.40
1:A:235:ILE:HG22	1:A:239:MET:HE2	2.04	0.40
1:A:567:ARG:CD	1:A:570:PRO:HA	2.45	0.40
1:A:141:LYS:O	1:A:144:ASP:HB2	2.21	0.40
1:A:120:LYS:HE2	1:A:120:LYS:HB3	1.88	0.40
1:A:131:ARG:C	1:A:133:ASP:N	2.74	0.40
1:A:259:GLN:OE1	1:A:259:GLN:HA	2.20	0.40
1:A:575:GLU:HG2	1:A:575:GLU:H	1.66	0.40

There are no symmetry-related clashes.

5.3 Torsion angles [i](#)

5.3.1 Protein backbone [i](#)

In the following table, the Percentiles column shows the percent Ramachandran outliers of the chain as a percentile score with respect to all X-ray entries followed by that with respect to entries of similar resolution.

The Analysed column shows the number of residues for which the backbone conformation was analysed, and the total number of residues.

Mol	Chain	Analysed	Favoured	Allowed	Outliers	Percentiles
1	A	993/995 (100%)	877 (88%)	100 (10%)	16 (2%)	9 19

All (16) Ramachandran outliers are listed below:

Mol	Chain	Res	Type
1	A	240	ALA
1	A	857	MET
1	A	964	LEU
1	A	859	ALA
1	A	865	VAL
1	A	918	GLU
1	A	133	ASP
1	A	241	ALA

Continued on next page...

Continued from previous page...

Mol	Chain	Res	Type
1	A	243	GLU
1	A	558	THR
1	A	895	GLU
1	A	277	GLY
1	A	797	LEU
1	A	864	GLY
1	A	926	PRO
1	A	885	GLY

5.3.2 Protein sidechains [i](#)

In the following table, the Percentiles column shows the percent sidechain outliers of the chain as a percentile score with respect to all X-ray entries followed by that with respect to entries of similar resolution.

The Analysed column shows the number of residues for which the sidechain conformation was analysed, and the total number of residues.

Mol	Chain	Analysed	Rotameric	Outliers	Percentiles
1	A	840/840 (100%)	808 (96%)	32 (4%)	33 59

All (32) residues with a non-rotameric sidechain are listed below:

Mol	Chain	Res	Type
1	A	7	LYS
1	A	45	GLU
1	A	80	GLU
1	A	82	GLU
1	A	114	ASN
1	A	133	ASP
1	A	134	ARG
1	A	149	ASP
1	A	164	ARG
1	A	174	ARG
1	A	238	GLN
1	A	247	THR
1	A	319	LEU
1	A	342	LEU
1	A	356	LEU
1	A	384	ILE
1	A	402	ILE
1	A	421	ASN

Continued on next page...

Continued from previous page...

Mol	Chain	Res	Type
1	A	439	GLU
1	A	484	THR
1	A	491	ARG
1	A	544	LYS
1	A	567	ARG
1	A	600	LEU
1	A	631	THR
1	A	656	ARG
1	A	691	LEU
1	A	713	LYS
1	A	732	GLU
1	A	739	ASN
1	A	911	ASN
1	A	975	LEU

Sometimes sidechains can be flipped to improve hydrogen bonding and reduce clashes. All (17) such sidechains are listed below:

Mol	Chain	Res	Type
1	A	56	GLN
1	A	101	ASN
1	A	114	ASN
1	A	177	GLN
1	A	238	GLN
1	A	250	GLN
1	A	275	ASN
1	A	359	ASN
1	A	421	ASN
1	A	510	ASN
1	A	612	GLN
1	A	756	ASN
1	A	768	ASN
1	A	875	GLN
1	A	911	ASN
1	A	914	ASN
1	A	966	GLN

5.3.3 RNA [i](#)

There are no RNA molecules in this entry.

5.4 Non-standard residues in protein, DNA, RNA chains [i](#)

There are no non-standard protein/DNA/RNA residues in this entry.

5.5 Carbohydrates [i](#)

There are no monosaccharides in this entry.

5.6 Ligand geometry [i](#)

Of 5 ligands modelled in this entry, 2 are monoatomic - leaving 3 for Mogul analysis.

In the following table, the Counts columns list the number of bonds (or angles) for which Mogul statistics could be retrieved, the number of bonds (or angles) that are observed in the model and the number of bonds (or angles) that are defined in the Chemical Component Dictionary. The Link column lists molecule types, if any, to which the group is linked. The Z score for a bond length (or angle) is the number of standard deviations the observed value is removed from the expected value. A bond length (or angle) with $|Z| > 2$ is considered an outlier worth inspection. RMSZ is the root-mean-square of all Z scores of the bond lengths (or angles).

Mol	Type	Chain	Res	Link	Bond lengths			Bond angles		
					Counts	RMSZ	# Z > 2	Counts	RMSZ	# Z > 2
5	TM1	A	1002	-	30,42,42	3.67	14 (46%)	31,66,66	3.00	10 (32%)
4	ALF	A	998	-	0,4,4	-	-	-		
6	TG1	A	1003	-	43,48,48	1.75	11 (25%)	44,72,72	1.83	11 (25%)

In the following table, the Chirals column lists the number of chiral outliers, the number of chiral centers analysed, the number of these observed in the model and the number defined in the Chemical Component Dictionary. Similar counts are reported in the Torsion and Rings columns. '2' means no outliers of that kind were identified.

Mol	Type	Chain	Res	Link	Chirals	Torsions	Rings
5	TM1	A	1002	-	-	4/12/68/68	0/5/5/5
6	TG1	A	1003	-	-	9/33/99/99	0/3/3/3

All (25) bond length outliers are listed below:

Mol	Chain	Res	Type	Atoms	Z	Observed(Å)	Ideal(Å)
5	A	1002	TM1	C5F-C6F	12.76	1.52	1.33
5	A	1002	TM1	O3'-C1F	7.25	1.51	1.41
5	A	1002	TM1	O2'-C1F	7.15	1.51	1.41
6	A	1003	TG1	O4-C21	5.57	1.33	1.21
5	A	1002	TM1	C4-N3	4.13	1.41	1.35

Continued on next page...

Continued from previous page...

Mol	Chain	Res	Type	Atoms	Z	Observed(Å)	Ideal(Å)
5	A	1002	TM1	C4F-C3F	-4.10	1.38	1.50
5	A	1002	TM1	C3F-C2F	4.03	1.39	1.33
5	A	1002	TM1	C2-N3	3.91	1.38	1.32
5	A	1002	TM1	C5'-C4'	3.70	1.63	1.51
6	A	1003	TG1	C3-C4	3.49	1.54	1.50
5	A	1002	TM1	O7F-N6F	-3.18	1.17	1.22
6	A	1003	TG1	C1-C2	3.16	1.59	1.54
6	A	1003	TG1	O6-C7	3.09	1.48	1.43
5	A	1002	TM1	C2-N1	3.04	1.39	1.33
5	A	1002	TM1	C3'-C4'	-3.03	1.44	1.52
6	A	1003	TG1	C11-C7	2.91	1.59	1.55
6	A	1003	TG1	C9-C10	2.80	1.59	1.54
6	A	1003	TG1	C1-C5	2.74	1.55	1.51
6	A	1003	TG1	O3-C3	2.37	1.49	1.44
5	A	1002	TM1	C4F-C5F	-2.32	1.43	1.50
6	A	1003	TG1	C34-C11	2.27	1.56	1.53
6	A	1003	TG1	C4-C5	2.10	1.36	1.34
5	A	1002	TM1	PA-O5'	2.03	1.66	1.60
5	A	1002	TM1	C5-N7	-2.02	1.32	1.39
6	A	1003	TG1	C9-C8	2.01	1.55	1.52

All (21) bond angle outliers are listed below:

Mol	Chain	Res	Type	Atoms	Z	Observed(°)	Ideal(°)
5	A	1002	TM1	O2'-C1F-C2F	-8.02	99.50	110.47
5	A	1002	TM1	O3'-C1F-C6F	-7.11	100.75	110.47
5	A	1002	TM1	O2'-C2'-C3'	6.36	113.73	103.58
6	A	1003	TG1	C10-O9-C32	5.45	134.47	121.53
5	A	1002	TM1	N3-C2-N1	-4.86	121.09	128.68
5	A	1002	TM1	O4'-C1'-C2'	-4.42	98.91	106.59
6	A	1003	TG1	O12-C12-C11	-4.04	124.22	128.28
5	A	1002	TM1	PA-O5'-C5'	3.88	128.99	118.30
5	A	1002	TM1	O3'-C1F-C2F	3.82	115.69	110.47
5	A	1002	TM1	C2'-C3'-C4'	3.52	112.07	103.72
6	A	1003	TG1	O3-C21-O4	3.44	129.88	123.32
6	A	1003	TG1	C7-C6-C5	3.29	123.82	115.41
6	A	1003	TG1	C24-C22-C21	3.29	133.78	120.78
6	A	1003	TG1	C23-C22-C21	-2.77	109.16	116.09
6	A	1003	TG1	O5-C12-O12	2.66	125.15	121.62
6	A	1003	TG1	C2-O1-C13	2.63	121.91	117.53
5	A	1002	TM1	O3'-C3'-C2'	2.60	107.74	103.58
6	A	1003	TG1	C11-C7-C6	-2.42	98.37	103.03

Continued on next page...

Continued from previous page...

Mol	Chain	Res	Type	Atoms	Z	Observed(°)	Ideal(°)
5	A	1002	TM1	O5'-C5'-C4'	2.16	116.42	108.99
6	A	1003	TG1	C8-O7-C27	2.11	121.89	117.92
6	A	1003	TG1	O4-C21-C22	-2.08	118.68	125.21

There are no chirality outliers.

All (13) torsion outliers are listed below:

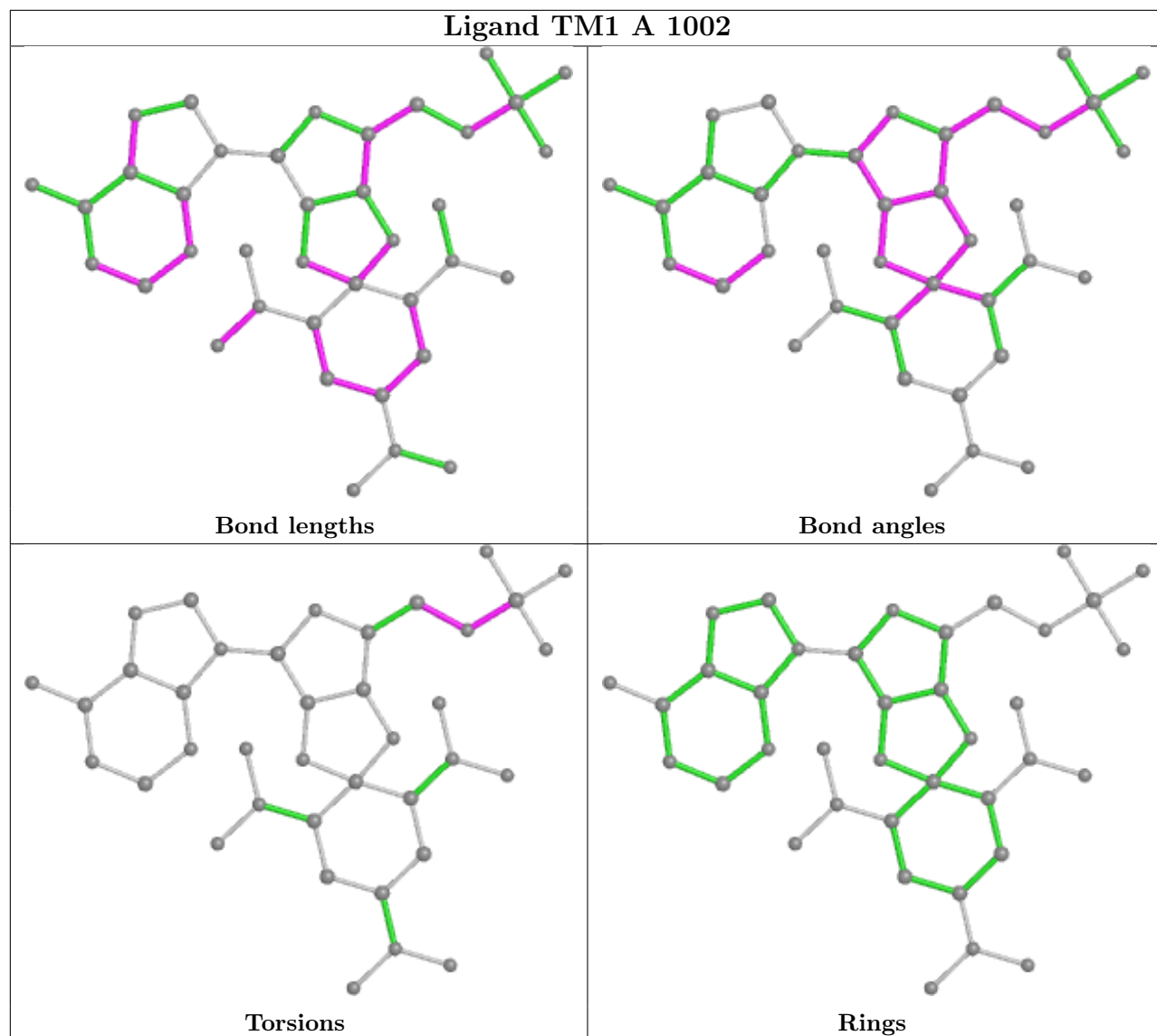
Mol	Chain	Res	Type	Atoms
5	A	1002	TM1	C5'-O5'-PA-O1A
5	A	1002	TM1	C5'-O5'-PA-O2A
5	A	1002	TM1	C5'-O5'-PA-O3A
5	A	1002	TM1	C4'-C5'-O5'-PA
6	A	1003	TG1	O3-C21-C22-C23
6	A	1003	TG1	O3-C21-C22-C24
6	A	1003	TG1	O4-C21-C22-C23
6	A	1003	TG1	O4-C21-C22-C24
6	A	1003	TG1	C17-C18-C19-C20
6	A	1003	TG1	O1-C13-C14-C15
6	A	1003	TG1	C22-C21-O3-C3
6	A	1003	TG1	O2-C13-C14-C15
6	A	1003	TG1	O7-C27-C28-C29

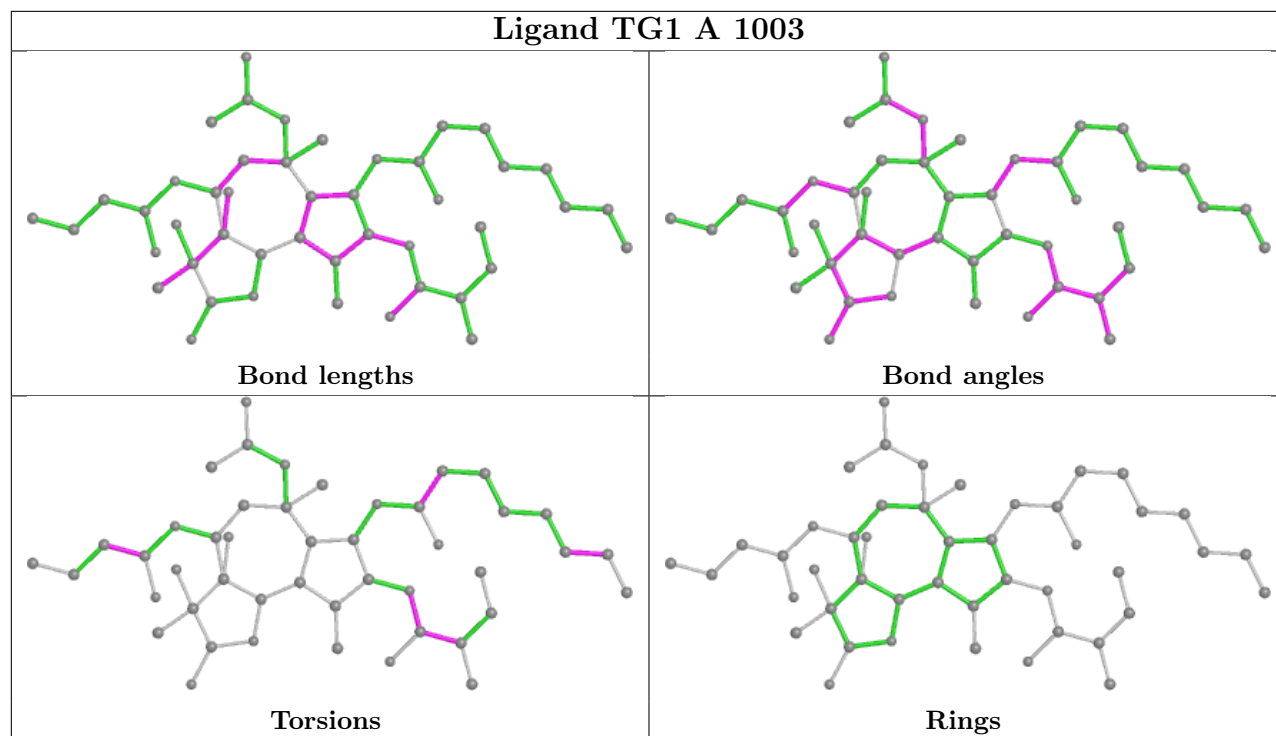
There are no ring outliers.

2 monomers are involved in 4 short contacts:

Mol	Chain	Res	Type	Clashes	Symm-Clashes
4	A	998	ALF	1	0
6	A	1003	TG1	3	0

The following is a two-dimensional graphical depiction of Mogul quality analysis of bond lengths, bond angles, torsion angles, and ring geometry for all instances of the Ligand of Interest. In addition, ligands with molecular weight > 250 and outliers as shown on the validation Tables will also be included. For torsion angles, if less than 5% of the Mogul distribution of torsion angles is within 10 degrees of the torsion angle in question, then that torsion angle is considered an outlier. Any bond that is central to one or more torsion angles identified as an outlier by Mogul will be highlighted in the graph. For rings, the root-mean-square deviation (RMSD) between the ring in question and similar rings identified by Mogul is calculated over all ring torsion angles. If the average RMSD is greater than 60 degrees and the minimal RMSD between the ring in question and any Mogul-identified rings is also greater than 60 degrees, then that ring is considered an outlier. The outliers are highlighted in purple. The color gray indicates Mogul did not find sufficient equivalents in the CSD to analyse the geometry.





5.7 Other polymers [i](#)

There are no such residues in this entry.

5.8 Polymer linkage issues [i](#)

There are no chain breaks in this entry.

6 Fit of model and data

6.1 Protein, DNA and RNA chains

In the following table, the column labelled ‘#RSRZ> 2’ contains the number (and percentage) of RSRZ outliers, followed by percent RSRZ outliers for the chain as percentile scores relative to all X-ray entries and entries of similar resolution. The OWAB column contains the minimum, median, 95th percentile and maximum values of the occupancy-weighted average B-factor per residue. The column labelled ‘Q< 0.9’ lists the number of (and percentage) of residues with an average occupancy less than 0.9.

Mol	Chain	Analysed	<RSRZ>	#RSRZ>2	OWAB(Å ²)	Q<0.9
1	A	994/995 (99%)	0.68	147 (14%) 2 1	37, 71, 174, 196	1 (0%)

All (147) RSRZ outliers are listed below:

Mol	Chain	Res	Type	RSRZ
1	A	81	GLY	15.8
1	A	279	PHE	9.3
1	A	284	HIS	9.2
1	A	282	PRO	9.1
1	A	890	ILE	8.9
1	A	289	ILE	8.3
1	A	80	GLU	7.8
1	A	883	PHE	7.5
1	A	77	TRP	7.3
1	A	876	CYS	6.9
1	A	286	GLY	6.9
1	A	280	ASN	6.9
1	A	991	TYR	6.8
1	A	285	GLY	6.8
1	A	994	GLY	6.8
1	A	281	ASP	6.7
1	A	283	VAL	6.7
1	A	287	SER	6.6
1	A	868	HIS	6.6
1	A	878	GLU	6.6
1	A	278	HIS	6.5
1	A	75	LEU	6.4
1	A	241	ALA	6.4
1	A	859	ALA	6.3
1	A	277	GLY	6.3
1	A	78	PHE	6.2
1	A	84	THR	6.2

Continued on next page...

Continued from previous page...

Mol	Chain	Res	Type	RSRZ
1	A	882	HIS	6.1
1	A	85	ILE	6.0
1	A	879	ASP	5.9
1	A	242	THR	5.6
1	A	886	LEU	5.4
1	A	867	TYR	5.4
1	A	993	GLU	5.4
1	A	924	ARG	5.4
1	A	47	LYS	5.4
1	A	891	PHE	5.3
1	A	82	GLU	5.3
1	A	288	TRP	5.3
1	A	881	PRO	5.1
1	A	967	TRP	5.0
1	A	107	TRP	4.8
1	A	857	MET	4.8
1	A	291	GLY	4.8
1	A	46	GLY	4.7
1	A	49	LEU	4.6
1	A	874	MET	4.5
1	A	110	ARG	4.4
1	A	106	VAL	4.4
1	A	923	MET	4.4
1	A	956	ILE	4.4
1	A	290	ARG	4.3
1	A	889	GLU	4.3
1	A	103	ILE	4.3
1	A	888	CYS	4.3
1	A	992	LEU	4.3
1	A	87	ALA	4.1
1	A	887	ASP	4.1
1	A	873	PHE	4.0
1	A	293	ILE	4.0
1	A	273	LEU	3.9
1	A	858	TYR	3.9
1	A	855	TRP	3.8
1	A	875	GLN	3.8
1	A	877	THR	3.8
1	A	109	GLU	3.7
1	A	111	ASN	3.7
1	A	83	GLU	3.7
1	A	786	ALA	3.6

Continued on next page...

Continued from previous page...

Mol	Chain	Res	Type	RSRZ
1	A	915	SER	3.6
1	A	964	LEU	3.5
1	A	45	GLU	3.5
1	A	911	ASN	3.5
1	A	74	VAL	3.5
1	A	814	LEU	3.5
1	A	957	PHE	3.4
1	A	928	TRP	3.4
1	A	835	PHE	3.4
1	A	276	ILE	3.3
1	A	955	MET	3.3
1	A	951	ASP	3.2
1	A	953	LEU	3.2
1	A	866	THR	3.2
1	A	556	ARG	3.1
1	A	763	TYR	3.1
1	A	925	MET	3.0
1	A	912	ALA	3.0
1	A	104	VAL	3.0
1	A	968	LEU	3.0
1	A	79	GLU	3.0
1	A	433	VAL	3.0
1	A	766	SER	2.9
1	A	905	VAL	2.9
1	A	863	PRO	2.8
1	A	885	GLY	2.8
1	A	871	THR	2.8
1	A	987	ILE	2.7
1	A	861	ASP	2.7
1	A	71	ILE	2.7
1	A	869	GLN	2.6
1	A	53	VAL	2.6
1	A	880	HIS	2.6
1	A	60	LEU	2.6
1	A	246	LYS	2.6
1	A	88	PHE	2.6
1	A	902	SER	2.6
1	A	504	SER	2.6
1	A	417	CYS	2.6
1	A	897	MET	2.5
1	A	52	LEU	2.5
1	A	785	GLU	2.5

Continued on next page...

Continued from previous page...

Mol	Chain	Res	Type	RSRZ
1	A	767	SER	2.5
1	A	764	LEU	2.4
1	A	832	TRP	2.4
1	A	862	GLY	2.4
1	A	870	LEU	2.4
1	A	50	TRP	2.4
1	A	904	LEU	2.4
1	A	210	SER	2.4
1	A	989	ARG	2.4
1	A	508	VAL	2.4
1	A	787	LEU	2.3
1	A	986	PHE	2.3
1	A	946	LEU	2.3
1	A	57	PHE	2.3
1	A	554	THR	2.3
1	A	416	ILE	2.3
1	A	240	ALA	2.3
1	A	268	CYS	2.3
1	A	294	TYR	2.3
1	A	945	PHE	2.3
1	A	86	THR	2.2
1	A	916	LEU	2.2
1	A	295	TYR	2.1
1	A	990	ASN	2.1
1	A	243	GLU	2.1
1	A	420	CYS	2.1
1	A	920	GLN	2.1
1	A	296	PHE	2.1
1	A	761	ILE	2.1
1	A	971	LEU	2.1
1	A	952	PRO	2.1
1	A	244	GLN	2.1
1	A	292	ALA	2.1
1	A	908	GLU	2.0
1	A	931	ILE	2.0
1	A	860	GLU	2.0

6.2 Non-standard residues in protein, DNA, RNA chains

There are no non-standard protein/DNA/RNA residues in this entry.

6.3 Carbohydrates

There are no monosaccharides in this entry.

6.4 Ligands

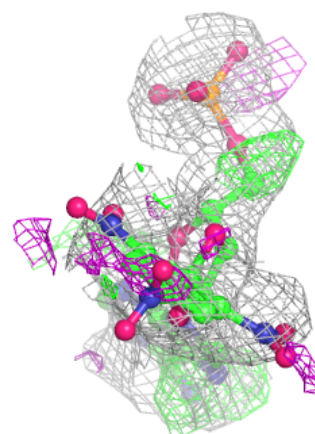
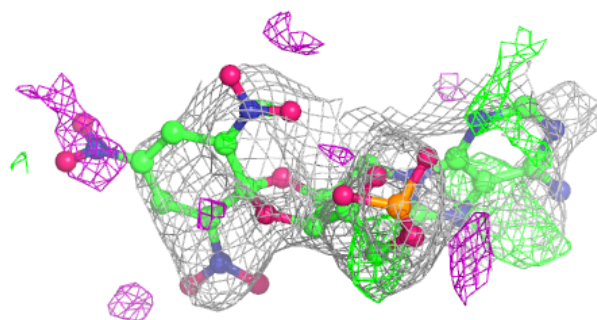
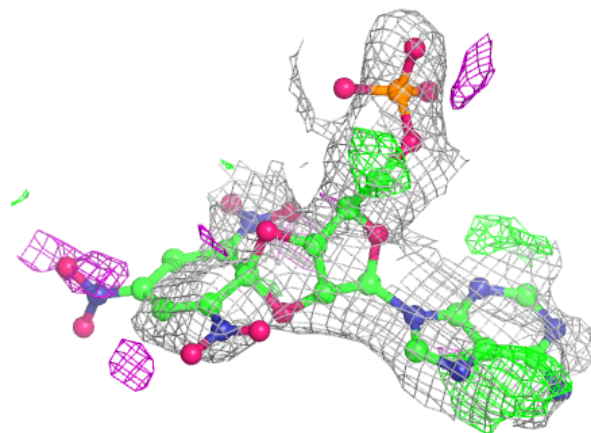
In the following table, the Atoms column lists the number of modelled atoms in the group and the number defined in the chemical component dictionary. The B-factors column lists the minimum, median, 95th percentile and maximum values of B factors of atoms in the group. The column labelled 'Q< 0.9' lists the number of atoms with occupancy less than 0.9.

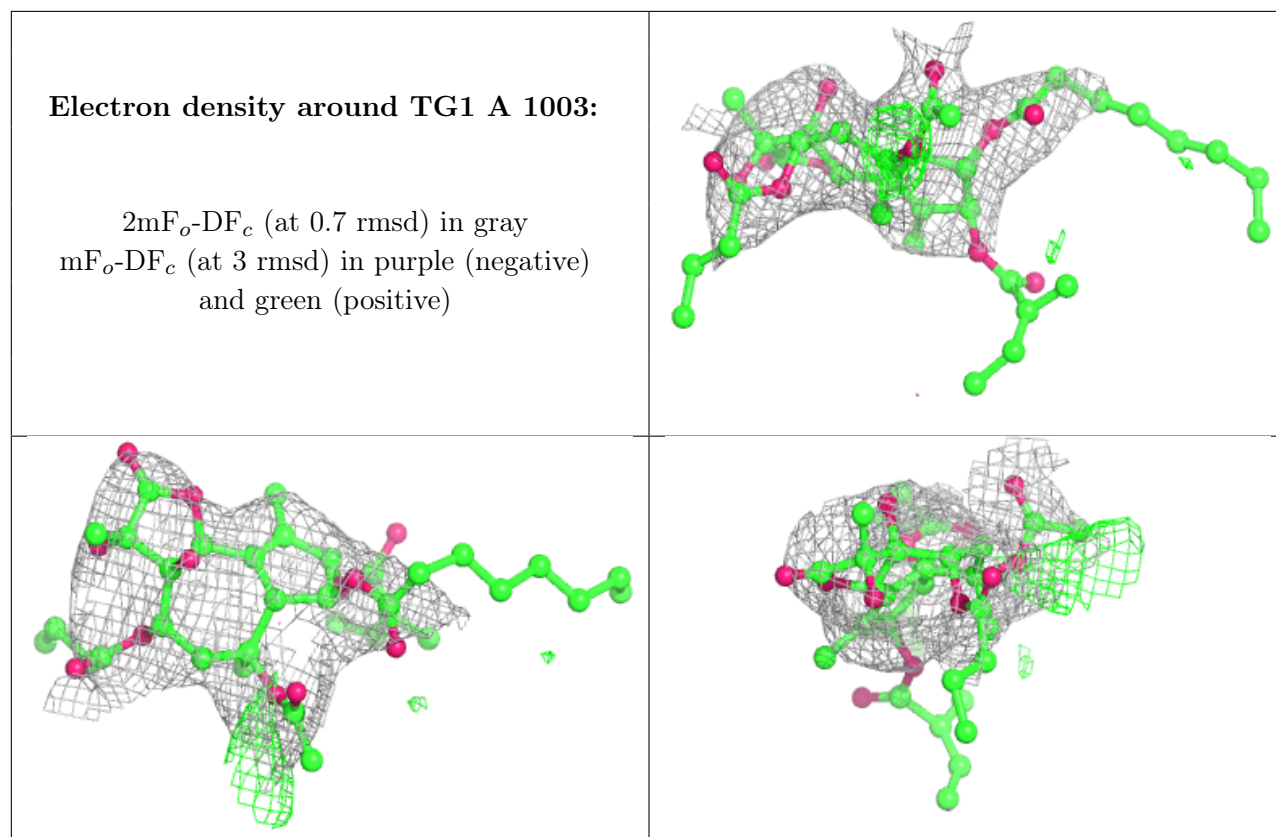
Mol	Type	Chain	Res	Atoms	RSCC	RSR	B-factors(\AA^2)	Q<0.9
5	TM1	A	1002	38/38	0.78	0.30	146,151,157,159	0
6	TG1	A	1003	46/46	0.86	0.29	143,145,149,150	0
2	NA	A	1000	1/1	0.97	0.08	57,57,57,57	0
3	MG	A	995	1/1	0.99	0.16	37,37,37,37	0
4	ALF	A	998	5/5	0.99	0.21	34,34,36,37	0

The following is a graphical depiction of the model fit to experimental electron density of all instances of the Ligand of Interest. In addition, ligands with molecular weight > 250 and outliers as shown on the geometry validation Tables will also be included. Each fit is shown from different orientation to approximate a three-dimensional view.

Electron density around TM1 A 1002:

$2mF_o-DF_c$ (at 0.7 rmsd) in gray
 mF_o-DF_c (at 3 rmsd) in purple (negative)
and green (positive)





6.5 Other polymers [i](#)

There are no such residues in this entry.