



wwPDB EM Validation Summary Report ⓘ

Nov 5, 2024 – 07:35 AM EST

PDB ID : 9ASD
EMDB ID : EMD-43813
Title : VIR-7229 Fab fragment bound the SARS-CoV-2 BA.2.86 spike trimer (local refinement of the BA 2.86 RBD/VIR-7229 VHVL)
Authors : Park, Y.J.; Tortorici, M.A.; Seattle Structural Genomics Center for Infectious Disease (SSGCID); Veesler, D.
Deposited on : 2024-02-25
Resolution : 3.30 Å(reported)

This is a wwPDB EM Validation Summary Report for a publicly released PDB entry.

We welcome your comments at validation@mail.wwpdb.org

A user guide is available at

<https://www.wwpdb.org/validation/2017/EMValidationReportHelp>

with specific help available everywhere you see the ⓘ symbol.

The types of validation reports are described at

<http://www.wwpdb.org/validation/2017/FAQs#types>.

The following versions of software and data (see [references ⓘ](#)) were used in the production of this report:

EMDB validation analysis : 0.0.1.dev113
Mogul : 2022.3.0, CSD as543be (2022)
MolProbity : 4.02b-467
Percentile statistics : 20231227.v01 (using entries in the PDB archive December 27th 2023)
MapQ : 1.9.13
Ideal geometry (proteins) : Engh & Huber (2001)
Ideal geometry (DNA, RNA) : Parkinson et al. (1996)
Validation Pipeline (wwPDB-VP) : 2.39

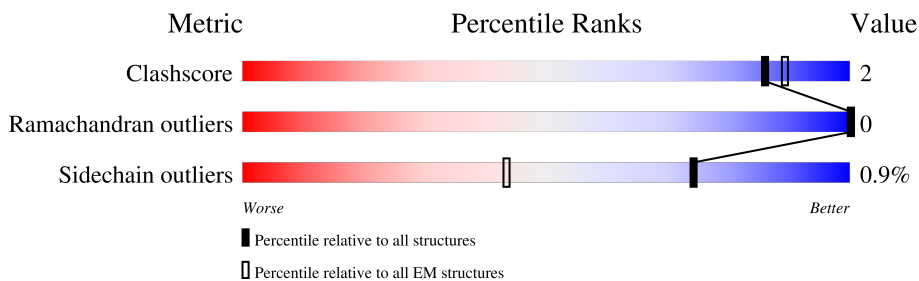
1 Overall quality at a glance

The following experimental techniques were used to determine the structure:

ELECTRON MICROSCOPY

The reported resolution of this entry is 3.30 Å.

Percentile scores (ranging between 0-100) for global validation metrics of the entry are shown in the following graphic. The table shows the number of entries on which the scores are based.



Metric	Whole archive (#Entries)	EM structures (#Entries)
Clashscore	210492	15764
Ramachandran outliers	207382	16835
Sidechain outliers	206894	16415

The table below summarises the geometric issues observed across the polymeric chains and their fit to the map. The red, orange, yellow and green segments of the bar indicate the fraction of residues that contain outliers for ≥ 3 , 2, 1 and 0 types of geometric quality criteria respectively. A grey segment represents the fraction of residues that are not modelled. The numeric value for each fraction is indicated below the corresponding segment, with a dot representing fractions $\leq 5\%$. The upper red bar (where present) indicates the fraction of residues that have poor fit to the EM map (all-atom inclusion $< 40\%$). The numeric value is given above the bar.

Mol	Chain	Length	Quality of chain
1	H	123	 96%
2	L	110	 93% 5%
3	R	1273	 14% 85%

2 Entry composition

There are 4 unique types of molecules in this entry. The entry contains 3013 atoms, of which 0 are hydrogens and 0 are deuteriums.

In the tables below, the AltConf column contains the number of residues with at least one atom in alternate conformation and the Trace column contains the number of residues modelled with at most 2 atoms.

- Molecule 1 is a protein called VIR-7229 Fab heavy chain.

Mol	Chain	Residues	Atoms					AltConf	Trace
			Total	C	N	O	S		
1	H	120	837	549	140	144	4	0	0

- Molecule 2 is a protein called VIR-7229 Fab light chain.

Mol	Chain	Residues	Atoms					AltConf	Trace
			Total	C	N	O	S		
2	L	108	738	475	128	132	3	0	0

- Molecule 3 is a protein called Spike glycoprotein.

Mol	Chain	Residues	Atoms					AltConf	Trace
			Total	C	N	O	S		
3	R	191	1410	924	243	235	8	0	0

There are 143 discrepancies between the modelled and reference sequences:

Chain	Residue	Modelled	Actual	Comment	Reference
R	20	MET	-	insertion	UNP P0DTC2
R	21	PRO	ASN	conflict	UNP P0DTC2
R	23	PHE	THR	conflict	UNP P0DTC2
R	24	ASN	THR	conflict	UNP P0DTC2
R	25	LEU	ARG	conflict	UNP P0DTC2
R	26	ILE	THR	conflict	UNP P0DTC2
R	27	THR	GLN	conflict	UNP P0DTC2
R	28	THR	LEU	conflict	UNP P0DTC2
R	29	THR	PRO	conflict	UNP P0DTC2
R	30	GLN	PRO	conflict	UNP P0DTC2
R	31	SER	ALA	conflict	UNP P0DTC2
R	54	LEU	SER	conflict	UNP P0DTC2
R	?	-	HIS	deletion	UNP P0DTC2
R	?	-	VAL	deletion	UNP P0DTC2
R	129	PHE	VAL	conflict	UNP P0DTC2

Continued on next page...

Continued from previous page...

Chain	Residue	Modelled	Actual	Comment	Reference
R	144	ASP	GLY	conflict	UNP P0DTC2
R	?	-	TYR	deletion	UNP P0DTC2
R	158	SER	PHE	conflict	UNP P0DTC2
R	159	GLY	ARG	conflict	UNP P0DTC2
R	?	-	ASN	deletion	UNP P0DTC2
R	212	ILE	LEU	conflict	UNP P0DTC2
R	213	GLY	VAL	conflict	UNP P0DTC2
R	216	PHE	LEU	conflict	UNP P0DTC2
R	245	ASN	HIS	conflict	UNP P0DTC2
R	264	ASP	ALA	conflict	UNP P0DTC2
R	332	VAL	ILE	conflict	UNP P0DTC2
R	339	HIS	GLY	conflict	UNP P0DTC2
R	356	THR	LYS	conflict	UNP P0DTC2
R	371	PHE	SER	conflict	UNP P0DTC2
R	373	PRO	SER	conflict	UNP P0DTC2
R	375	PHE	SER	conflict	UNP P0DTC2
R	376	ALA	THR	conflict	UNP P0DTC2
R	403	LYS	ARG	conflict	UNP P0DTC2
R	405	ASN	ASP	conflict	UNP P0DTC2
R	408	SER	ARG	conflict	UNP P0DTC2
R	417	ASN	LYS	conflict	UNP P0DTC2
R	440	LYS	ASN	conflict	UNP P0DTC2
R	445	HIS	VAL	conflict	UNP P0DTC2
R	446	SER	GLY	conflict	UNP P0DTC2
R	450	ASP	ASN	conflict	UNP P0DTC2
R	452	TRP	LEU	conflict	UNP P0DTC2
R	460	LYS	ASN	conflict	UNP P0DTC2
R	477	ASN	SER	conflict	UNP P0DTC2
R	478	LYS	THR	conflict	UNP P0DTC2
R	481	LYS	ASN	conflict	UNP P0DTC2
R	?	-	VAL	deletion	UNP P0DTC2
R	484	LYS	GLU	conflict	UNP P0DTC2
R	486	PRO	PHE	conflict	UNP P0DTC2
R	498	ARG	GLN	conflict	UNP P0DTC2
R	501	TYR	ASN	conflict	UNP P0DTC2
R	505	HIS	TYR	conflict	UNP P0DTC2
R	554	LYS	GLU	conflict	UNP P0DTC2
R	570	VAL	ALA	conflict	UNP P0DTC2
R	614	GLY	ASP	conflict	UNP P0DTC2
R	621	SER	PRO	conflict	UNP P0DTC2
R	655	TYR	HIS	conflict	UNP P0DTC2
R	670	VAL	ILE	conflict	UNP P0DTC2

Continued on next page...

Continued from previous page...

Chain	Residue	Modelled	Actual	Comment	Reference
R	679	LYS	ASN	conflict	UNP P0DTC2
R	681	ARG	PRO	conflict	UNP P0DTC2
R	682	GLY	ARG	conflict	UNP P0DTC2
R	683	SER	ARG	conflict	UNP P0DTC2
R	685	SER	ARG	conflict	UNP P0DTC2
R	764	LYS	ASN	conflict	UNP P0DTC2
R	796	TYR	ASP	conflict	UNP P0DTC2
R	817	PRO	PHE	conflict	UNP P0DTC2
R	892	PRO	ALA	conflict	UNP P0DTC2
R	899	PRO	ALA	conflict	UNP P0DTC2
R	939	PHE	SER	conflict	UNP P0DTC2
R	942	PRO	ALA	conflict	UNP P0DTC2
R	954	HIS	GLN	conflict	UNP P0DTC2
R	969	LYS	ASN	conflict	UNP P0DTC2
R	986	PRO	LYS	conflict	UNP P0DTC2
R	987	PRO	VAL	conflict	UNP P0DTC2
R	1143	LEU	PRO	conflict	UNP P0DTC2
R	1209	GLY	-	expression tag	UNP P0DTC2
R	1210	SER	-	expression tag	UNP P0DTC2
R	1211	GLY	-	expression tag	UNP P0DTC2
R	1212	TYR	-	expression tag	UNP P0DTC2
R	1213	ILE	-	expression tag	UNP P0DTC2
R	1214	PRO	-	expression tag	UNP P0DTC2
R	1215	GLU	-	expression tag	UNP P0DTC2
R	1216	ALA	-	expression tag	UNP P0DTC2
R	1217	PRO	-	expression tag	UNP P0DTC2
R	1218	ARG	-	expression tag	UNP P0DTC2
R	1219	ASP	-	expression tag	UNP P0DTC2
R	1220	GLY	-	expression tag	UNP P0DTC2
R	1221	GLN	-	expression tag	UNP P0DTC2
R	1222	ALA	-	expression tag	UNP P0DTC2
R	1223	TYR	-	expression tag	UNP P0DTC2
R	1224	VAL	-	expression tag	UNP P0DTC2
R	1225	ARG	-	expression tag	UNP P0DTC2
R	1226	LYS	-	expression tag	UNP P0DTC2
R	1227	ASP	-	expression tag	UNP P0DTC2
R	1228	GLY	-	expression tag	UNP P0DTC2
R	1229	GLU	-	expression tag	UNP P0DTC2
R	1230	TRP	-	expression tag	UNP P0DTC2
R	1231	VAL	-	expression tag	UNP P0DTC2
R	1232	LEU	-	expression tag	UNP P0DTC2
R	1233	LEU	-	expression tag	UNP P0DTC2

Continued on next page...

Continued from previous page...

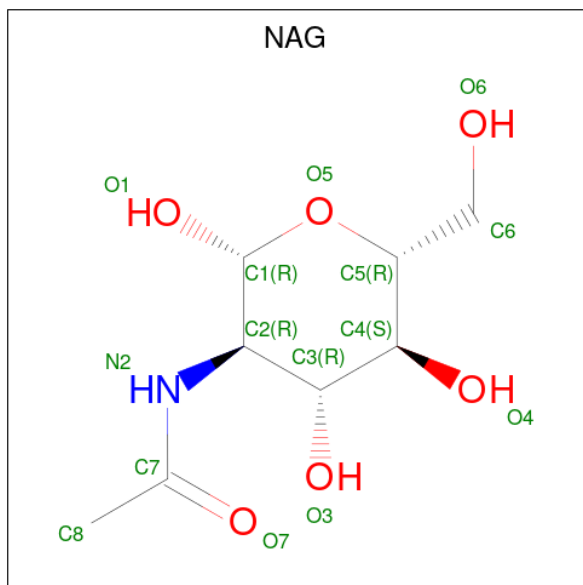
Chain	Residue	Modelled	Actual	Comment	Reference
R	1234	SER	-	expression tag	UNP P0DTC2
R	1235	THR	-	expression tag	UNP P0DTC2
R	1236	PHE	-	expression tag	UNP P0DTC2
R	1237	LEU	-	expression tag	UNP P0DTC2
R	1238	GLY	-	expression tag	UNP P0DTC2
R	1239	ARG	-	expression tag	UNP P0DTC2
R	1240	SER	-	expression tag	UNP P0DTC2
R	1241	LEU	-	expression tag	UNP P0DTC2
R	1242	GLU	-	expression tag	UNP P0DTC2
R	1243	VAL	-	expression tag	UNP P0DTC2
R	1244	LEU	-	expression tag	UNP P0DTC2
R	1245	PHE	-	expression tag	UNP P0DTC2
R	1246	GLN	-	expression tag	UNP P0DTC2
R	1247	GLY	-	expression tag	UNP P0DTC2
R	1248	PRO	-	expression tag	UNP P0DTC2
R	1249	GLY	-	expression tag	UNP P0DTC2
R	1250	SER	-	expression tag	UNP P0DTC2
R	1251	GLY	-	expression tag	UNP P0DTC2
R	1252	GLY	-	expression tag	UNP P0DTC2
R	1253	LEU	-	expression tag	UNP P0DTC2
R	1254	ASN	-	expression tag	UNP P0DTC2
R	1255	ASP	-	expression tag	UNP P0DTC2
R	1256	ILE	-	expression tag	UNP P0DTC2
R	1257	PHE	-	expression tag	UNP P0DTC2
R	1258	GLU	-	expression tag	UNP P0DTC2
R	1259	ALA	-	expression tag	UNP P0DTC2
R	1260	GLN	-	expression tag	UNP P0DTC2
R	1261	LYS	-	expression tag	UNP P0DTC2
R	1262	ILE	-	expression tag	UNP P0DTC2
R	1263	GLU	-	expression tag	UNP P0DTC2
R	1264	TRP	-	expression tag	UNP P0DTC2
R	1265	HIS	-	expression tag	UNP P0DTC2
R	1266	GLU	-	expression tag	UNP P0DTC2
R	1267	GLY	-	expression tag	UNP P0DTC2
R	1268	SER	-	expression tag	UNP P0DTC2
R	1269	GLY	-	expression tag	UNP P0DTC2
R	1270	HIS	-	expression tag	UNP P0DTC2
R	1271	HIS	-	expression tag	UNP P0DTC2
R	1272	HIS	-	expression tag	UNP P0DTC2
R	1273	HIS	-	expression tag	UNP P0DTC2
R	1274	HIS	-	expression tag	UNP P0DTC2
R	1275	HIS	-	expression tag	UNP P0DTC2

Continued on next page...

Continued from previous page...

Chain	Residue	Modelled	Actual	Comment	Reference
R	1276	HIS	-	expression tag	UNP P0DTC2
R	1277	HIS	-	expression tag	UNP P0DTC2

- Molecule 4 is 2-acetamido-2-deoxy-beta-D-glucopyranose (three-letter code: NAG) (formula: $C_8H_{15}NO_6$).



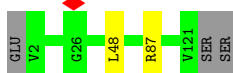
Mol	Chain	Residues	Atoms				AltConf
			Total	C	N	O	
4	R	1	14	8	1	5	0
4	R	1	14	8	1	5	0

3 Residue-property plots [i](#)


These plots are drawn for all protein, RNA, DNA and oligosaccharide chains in the entry. The first graphic for a chain summarises the proportions of the various outlier classes displayed in the second graphic. The second graphic shows the sequence view annotated by issues in geometry and atom inclusion in map density. Residues are color-coded according to the number of geometric quality criteria for which they contain at least one outlier: green = 0, yellow = 1, orange = 2 and red = 3 or more. A red diamond above a residue indicates a poor fit to the EM map for this residue (all-atom inclusion < 40%). Stretches of 2 or more consecutive residues without any outlier are shown as a green connector. Residues present in the sample, but not in the model, are shown in grey.

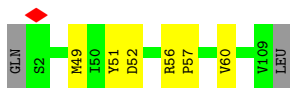
- Molecule 1: VIR-7229 Fab heavy chain

Chain H:  96%



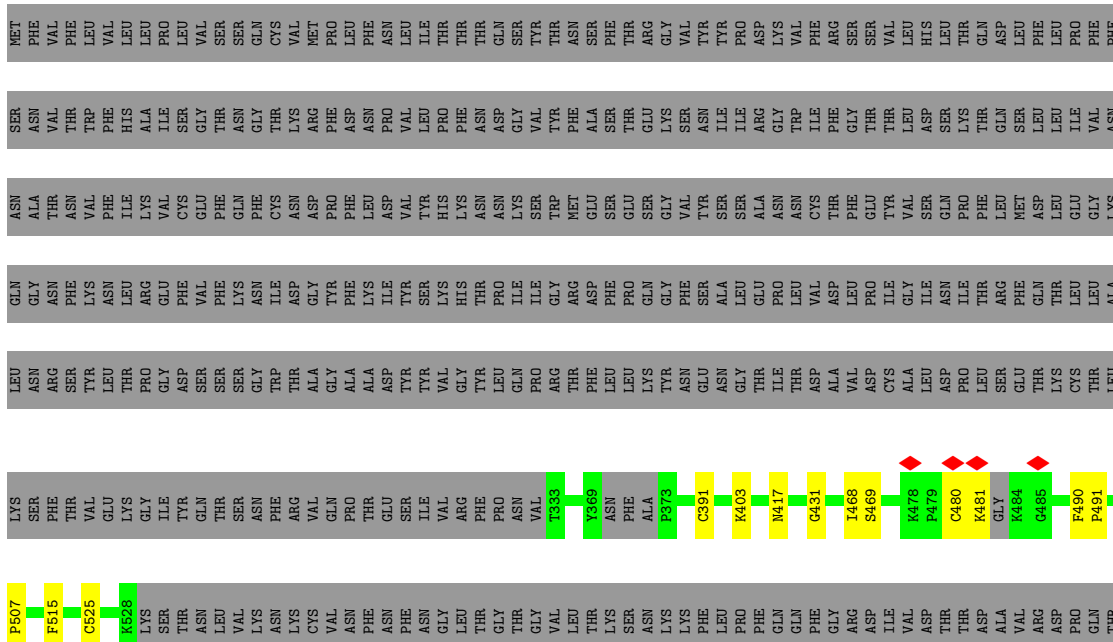
- Molecule 2: VIR-7229 Fab light chain

Chain L:  93%



- Molecule 3: Spike glycoprotein

Chain R:  14%



4 Experimental information

Property	Value	Source
EM reconstruction method	SINGLE PARTICLE	Depositor
Imposed symmetry	POINT, Not provided	
Number of particles used	314440	Depositor
Resolution determination method	FSC 0.143 CUT-OFF	Depositor
CTF correction method	PHASE FLIPPING AND AMPLITUDE CORRECTION	Depositor
Microscope	TFS KRIOS	Depositor
Voltage (kV)	300	Depositor
Electron dose ($e^-/\text{\AA}^2$)	60	Depositor
Minimum defocus (nm)	800	Depositor
Maximum defocus (nm)	2500	Depositor
Magnification	Not provided	
Image detector	GATAN K3 (6k x 4k)	Depositor
Maximum map value	7.996	Depositor
Minimum map value	-5.975	Depositor
Average map value	-0.000	Depositor
Map value standard deviation	0.038	Depositor
Recommended contour level	0.6	Depositor
Map size (Å)	512.0, 512.0, 512.0	wwPDB
Map dimensions	512, 512, 512	wwPDB
Map angles (°)	90.0, 90.0, 90.0	wwPDB
Pixel spacing (Å)	1.0, 1.0, 1.0	Depositor

5 Model quality [i](#)

5.1 Standard geometry [i](#)

Bond lengths and bond angles in the following residue types are not validated in this section:
NAG

The Z score for a bond length (or angle) is the number of standard deviations the observed value is removed from the expected value. A bond length (or angle) with $|Z| > 5$ is considered an outlier worth inspection. RMSZ is the root-mean-square of all Z scores of the bond lengths (or angles).

Mol	Chain	Bond lengths		Bond angles	
		RMSZ	# Z >5	RMSZ	# Z >5
1	H	0.55	0/861	0.67	0/1180
2	L	0.56	0/759	0.75	1/1041 (0.1%)
3	R	0.58	1/1456 (0.1%)	0.68	4/1987 (0.2%)
All	All	0.57	1/3076 (0.0%)	0.69	5/4208 (0.1%)

Chiral center outliers are detected by calculating the chiral volume of a chiral center and verifying if the center is modelled as a planar moiety or with the opposite hand. A planarity outlier is detected by checking planarity of atoms in a peptide group, atoms in a mainchain group or atoms of a sidechain that are expected to be planar.

Mol	Chain	#Chirality outliers	#Planarity outliers
1	H	0	1
2	L	0	1
All	All	0	2

All (1) bond length outliers are listed below:

Mol	Chain	Res	Type	Atoms	Z	Observed(Å)	Ideal(Å)
3	R	403	LYS	C-O	-6.23	1.11	1.23

All (5) bond angle outliers are listed below:

Mol	Chain	Res	Type	Atoms	Z	Observed(°)	Ideal(°)
3	R	403	LYS	CB-CA-C	-6.10	98.19	110.40
2	L	51	TYR	CA-CB-CG	6.00	124.80	113.40
3	R	468	ILE	CB-CA-C	-5.78	100.04	111.60
3	R	469	SER	N-CA-CB	5.53	118.79	110.50
3	R	469	SER	N-CA-C	-5.28	96.75	111.00

There are no chirality outliers.

All (2) planarity outliers are listed below:

Mol	Chain	Res	Type	Group
1	H	87	ARG	Sidechain
2	L	56	ARG	Sidechain

5.2 Too-close contacts [i](#)

In the following table, the Non-H and H(model) columns list the number of non-hydrogen atoms and hydrogen atoms in the chain respectively. The H(added) column lists the number of hydrogen atoms added and optimized by MolProbity. The Clashes column lists the number of clashes within the asymmetric unit, whereas Symm-Clashes lists symmetry-related clashes.

Mol	Chain	Non-H	H(model)	H(added)	Clashes	Symm-Clashes
1	H	837	0	675	0	0
2	L	738	0	590	2	0
3	R	1410	0	1196	8	0
4	R	28	0	26	0	0
All	All	3013	0	2487	10	0

The all-atom clashscore is defined as the number of clashes found per 1000 atoms (including hydrogen atoms). The all-atom clashscore for this structure is 2.

The worst 5 of 10 close contacts within the same asymmetric unit are listed below, sorted by their clash magnitude.

Atom-1	Atom-2	Interatomic distance (Å)	Clash overlap (Å)
2:L:49:MET:O	2:L:57:PRO:HD2	2.00	0.61
3:R:391:CYS:CB	3:R:525:CYS:SG	2.89	0.60
3:R:480:CYS:O	3:R:481:LYS:C	2.45	0.55
3:R:431:GLY:HA2	3:R:515:PHE:HD1	1.81	0.46
3:R:431:GLY:HA2	3:R:515:PHE:CD1	2.52	0.45

There are no symmetry-related clashes.

5.3 Torsion angles [i](#)

5.3.1 Protein backbone [i](#)

In the following table, the Percentiles column shows the percent Ramachandran outliers of the chain as a percentile score with respect to all PDB entries followed by that with respect to all EM entries.

The Analysed column shows the number of residues for which the backbone conformation was analysed, and the total number of residues.

Mol	Chain	Analysed	Favoured	Allowed	Outliers	Percentiles	
1	H	118/123 (96%)	113 (96%)	5 (4%)	0	100	100
2	L	106/110 (96%)	100 (94%)	6 (6%)	0	100	100
3	R	185/1273 (14%)	178 (96%)	7 (4%)	0	100	100
All	All	409/1506 (27%)	391 (96%)	18 (4%)	0	100	100

There are no Ramachandran outliers to report.

5.3.2 Protein sidechains [i](#)

In the following table, the Percentiles column shows the percent sidechain outliers of the chain as a percentile score with respect to all PDB entries followed by that with respect to all EM entries.

The Analysed column shows the number of residues for which the sidechain conformation was analysed, and the total number of residues.

Mol	Chain	Analysed	Rotameric	Outliers	Percentiles	
1	H	55/102 (54%)	54 (98%)	1 (2%)	54	74
2	L	52/91 (57%)	51 (98%)	1 (2%)	52	72
3	R	116/1109 (10%)	116 (100%)	0	100	100
All	All	223/1302 (17%)	221 (99%)	2 (1%)	74	85

All (2) residues with a non-rotameric sidechain are listed below:

Mol	Chain	Res	Type
1	H	48	LEU
2	L	52	ASP

Sometimes sidechains can be flipped to improve hydrogen bonding and reduce clashes. All (1) such sidechains are listed below:

Mol	Chain	Res	Type
3	R	417	ASN

5.3.3 RNA [i](#)

There are no RNA molecules in this entry.

5.4 Non-standard residues in protein, DNA, RNA chains [i](#)

There are no non-standard protein/DNA/RNA residues in this entry.

5.5 Carbohydrates [i](#)

There are no oligosaccharides in this entry.

5.6 Ligand geometry [i](#)

2 ligands are modelled in this entry.

In the following table, the Counts columns list the number of bonds (or angles) for which Mogul statistics could be retrieved, the number of bonds (or angles) that are observed in the model and the number of bonds (or angles) that are defined in the Chemical Component Dictionary. The Link column lists molecule types, if any, to which the group is linked. The Z score for a bond length (or angle) is the number of standard deviations the observed value is removed from the expected value. A bond length (or angle) with $|Z| > 2$ is considered an outlier worth inspection. RMSZ is the root-mean-square of all Z scores of the bond lengths (or angles).

Mol	Type	Chain	Res	Link	Bond lengths			Bond angles		
					Counts	RMSZ	# Z > 2	Counts	RMSZ	# Z > 2
4	NAG	R	1302	3	14,14,15	1.29	1 (7%)	17,19,21	1.13	2 (11%)
4	NAG	R	1301	3	14,14,15	1.21	1 (7%)	17,19,21	1.10	1 (5%)

In the following table, the Chirals column lists the number of chiral outliers, the number of chiral centers analysed, the number of these observed in the model and the number defined in the Chemical Component Dictionary. Similar counts are reported in the Torsion and Rings columns. '-' means no outliers of that kind were identified.

Mol	Type	Chain	Res	Link	Chirals	Torsions	Rings
4	NAG	R	1302	3	-	0/6/23/26	0/1/1/1
4	NAG	R	1301	3	-	2/6/23/26	0/1/1/1

All (2) bond length outliers are listed below:

Mol	Chain	Res	Type	Atoms	Z	Observed(Å)	Ideal(Å)
4	R	1302	NAG	C1-C2	3.78	1.57	1.52
4	R	1301	NAG	C1-C2	3.25	1.56	1.52

All (3) bond angle outliers are listed below:

Mol	Chain	Res	Type	Atoms	Z	Observed(°)	Ideal(°)
4	R	1301	NAG	C8-C7-N2	2.68	120.57	116.12
4	R	1302	NAG	C8-C7-N2	2.55	120.34	116.12
4	R	1302	NAG	C2-N2-C7	-2.33	119.77	122.90

There are no chirality outliers.

All (2) torsion outliers are listed below:

Mol	Chain	Res	Type	Atoms
4	R	1301	NAG	O5-C5-C6-O6
4	R	1301	NAG	C4-C5-C6-O6

There are no ring outliers.

No monomer is involved in short contacts.

5.7 Other polymers [i](#)

There are no such residues in this entry.

5.8 Polymer linkage issues [i](#)

There are no chain breaks in this entry.

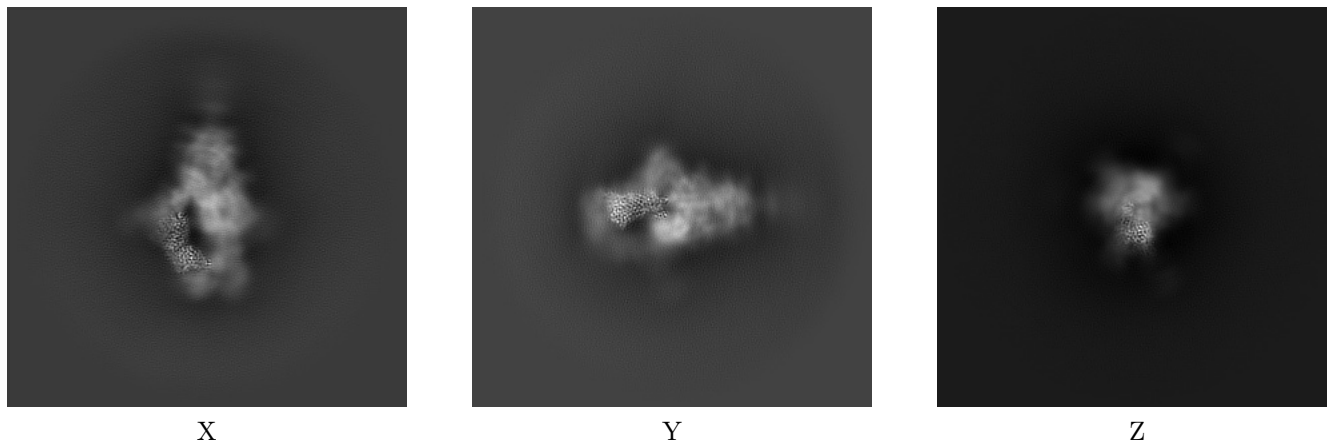
6 Map visualisation [i](#)

This section contains visualisations of the EMDB entry EMD-43813. These allow visual inspection of the internal detail of the map and identification of artifacts.

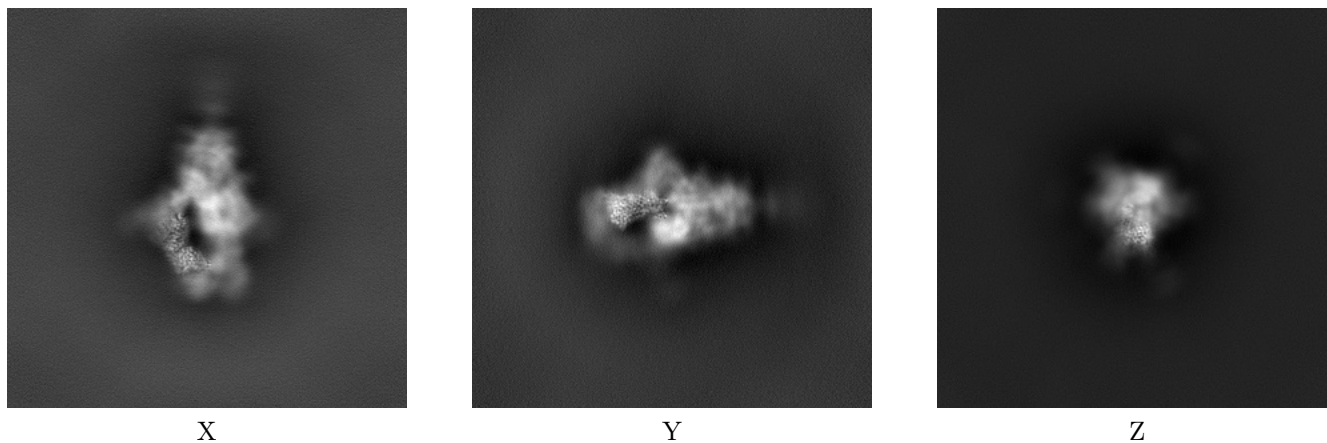
Images derived from a raw map, generated by summing the deposited half-maps, are presented below the corresponding image components of the primary map to allow further visual inspection and comparison with those of the primary map.

6.1 Orthogonal projections [i](#)

6.1.1 Primary map



6.1.2 Raw map



The images above show the map projected in three orthogonal directions.

6.2 Central slices [i](#)

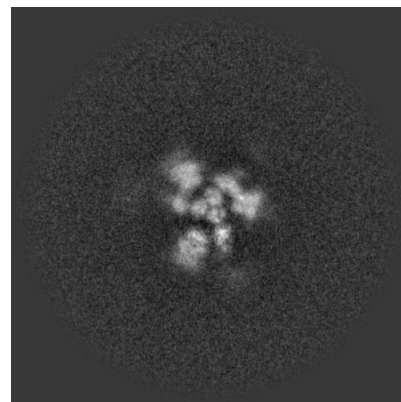
6.2.1 Primary map



X Index: 256



Y Index: 256



Z Index: 256

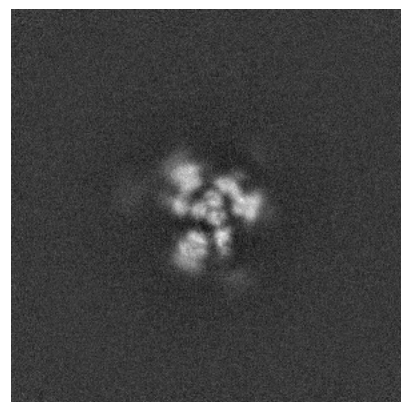
6.2.2 Raw map



X Index: 256



Y Index: 256

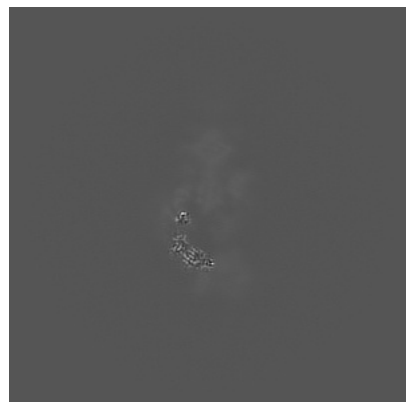


Z Index: 256

The images above show central slices of the map in three orthogonal directions.

6.3 Largest variance slices [i](#)

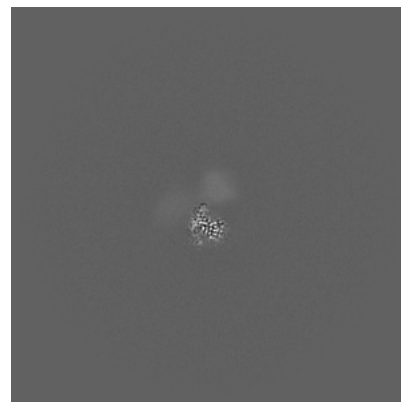
6.3.1 Primary map



X Index: 246



Y Index: 220

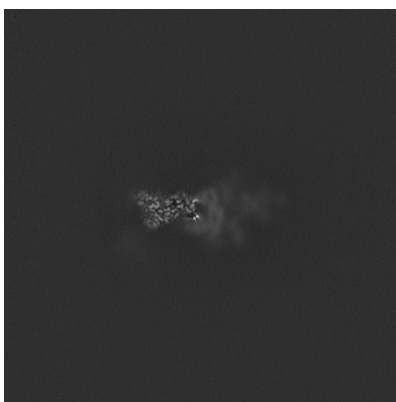


Z Index: 190

6.3.2 Raw map



X Index: 265



Y Index: 221

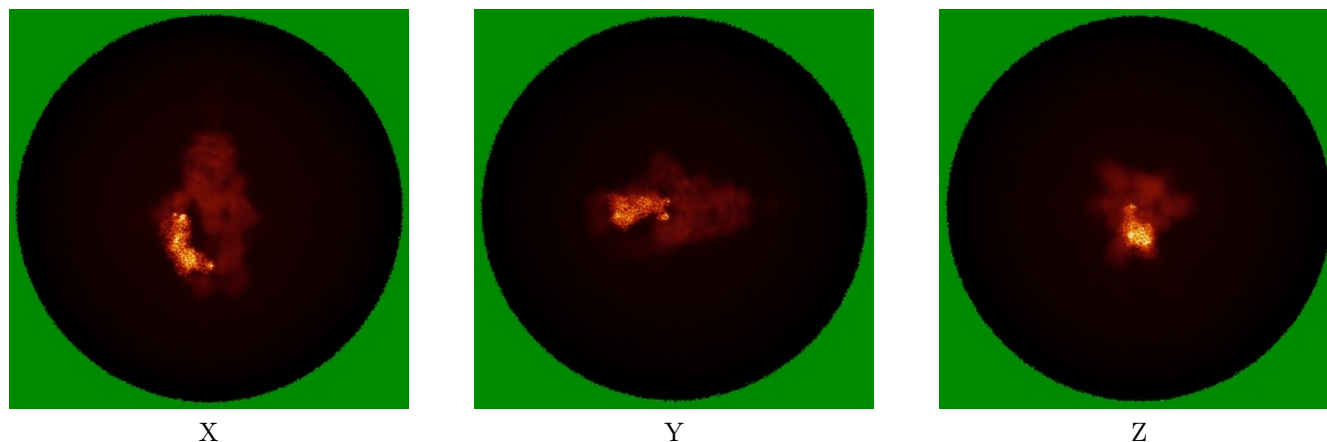


Z Index: 264

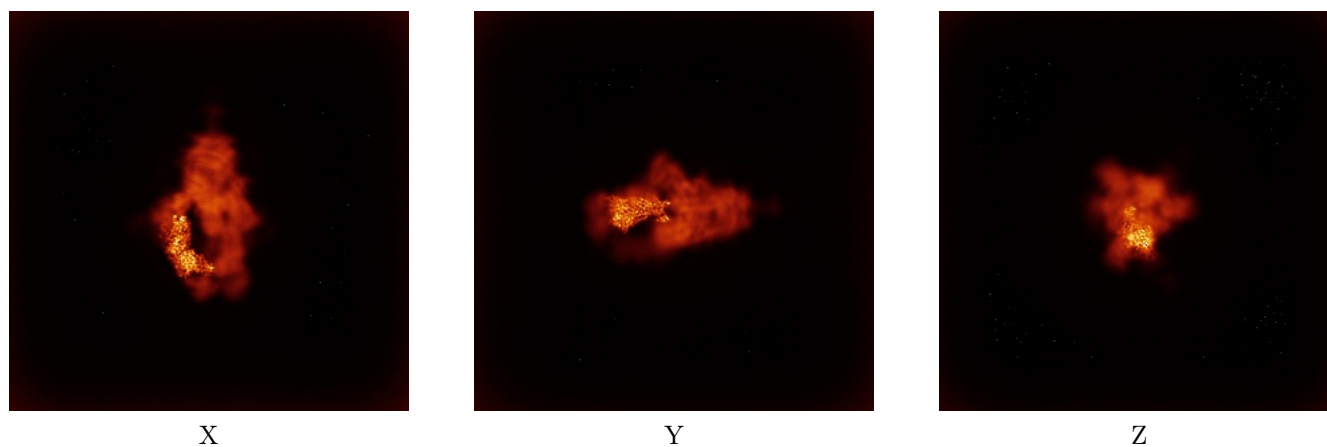
The images above show the largest variance slices of the map in three orthogonal directions.

6.4 Orthogonal standard-deviation projections (False-color) [i](#)

6.4.1 Primary map



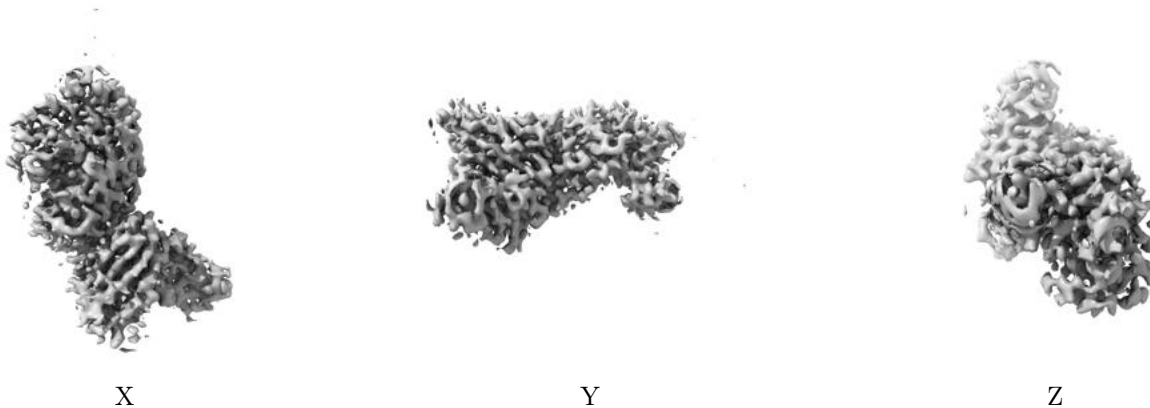
6.4.2 Raw map



The images above show the map standard deviation projections with false color in three orthogonal directions. Minimum values are shown in green, max in blue, and dark to light orange shades represent small to large values respectively.

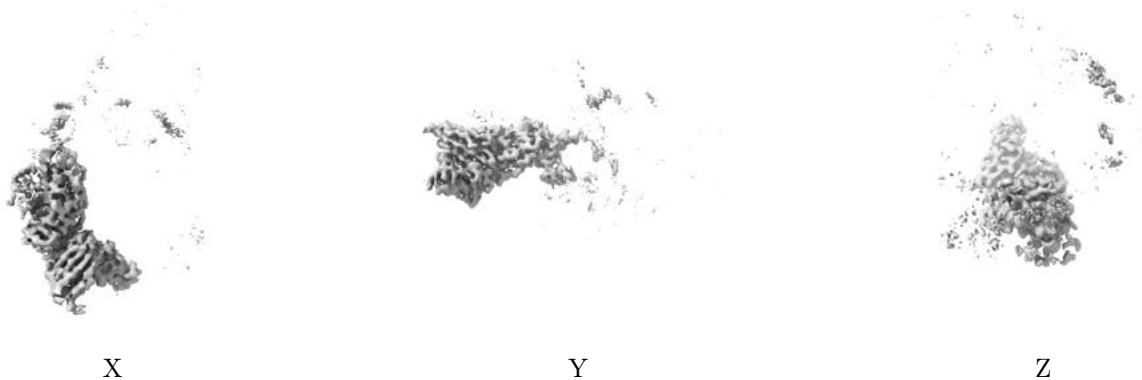
6.5 Orthogonal surface views [i](#)

6.5.1 Primary map



The images above show the 3D surface view of the map at the recommended contour level 0.6. These images, in conjunction with the slice images, may facilitate assessment of whether an appropriate contour level has been provided.

6.5.2 Raw map



These images show the 3D surface of the raw map. The raw map's contour level was selected so that its surface encloses the same volume as the primary map does at its recommended contour level.

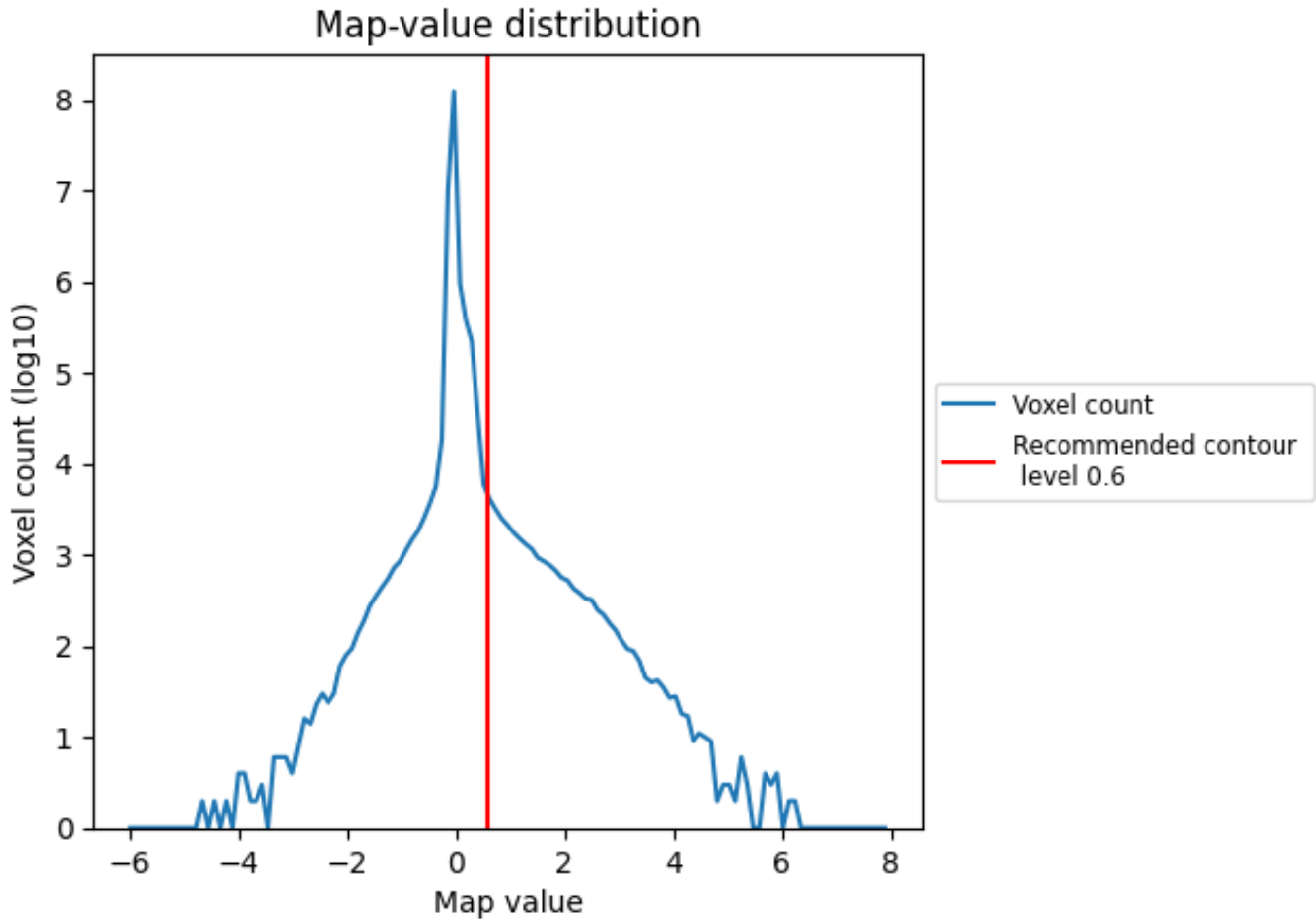
6.6 Mask visualisation [i](#)

This section was not generated. No masks/segmentation were deposited.

7 Map analysis [i](#)

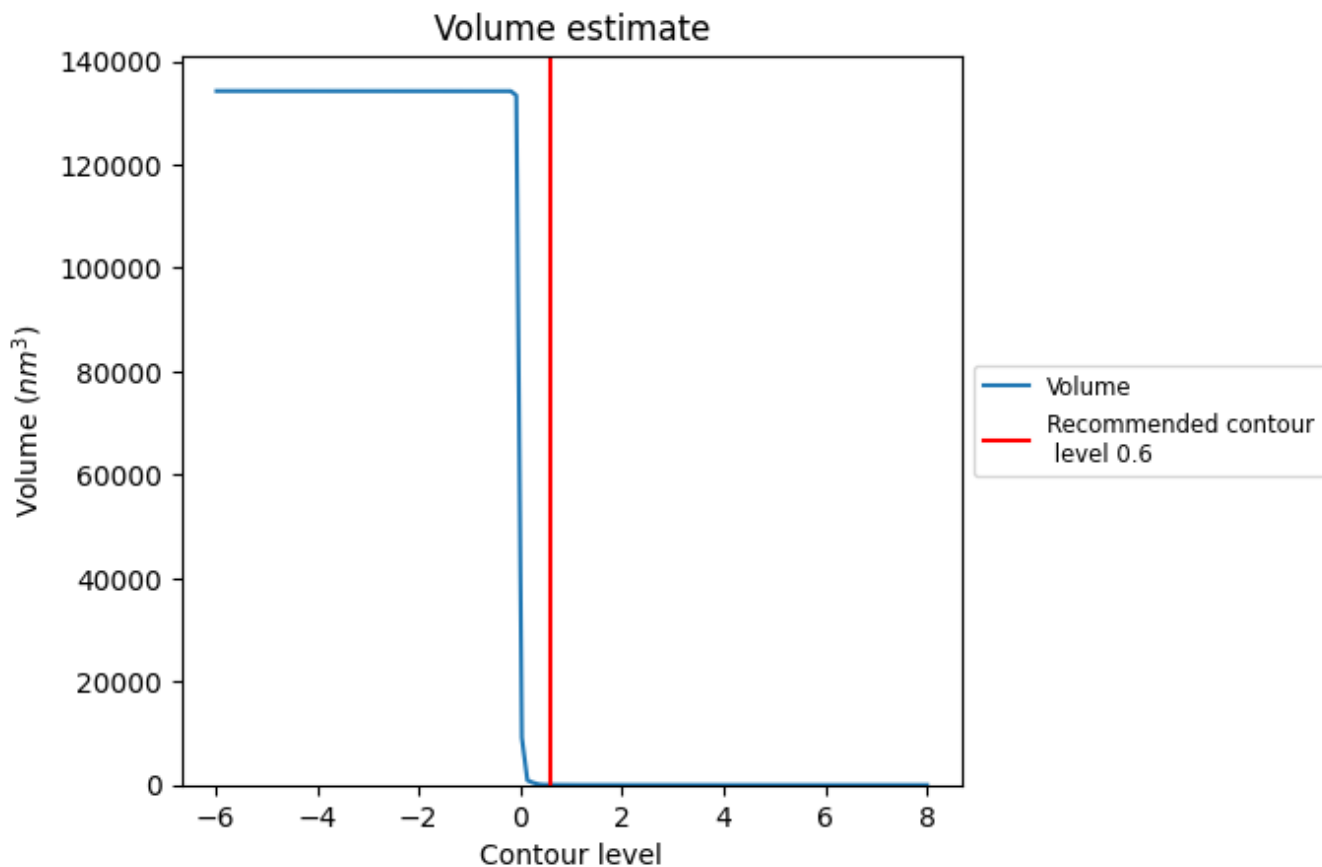
This section contains the results of statistical analysis of the map.

7.1 Map-value distribution [i](#)



The map-value distribution is plotted in 128 intervals along the x-axis. The y-axis is logarithmic. A spike in this graph at zero usually indicates that the volume has been masked.

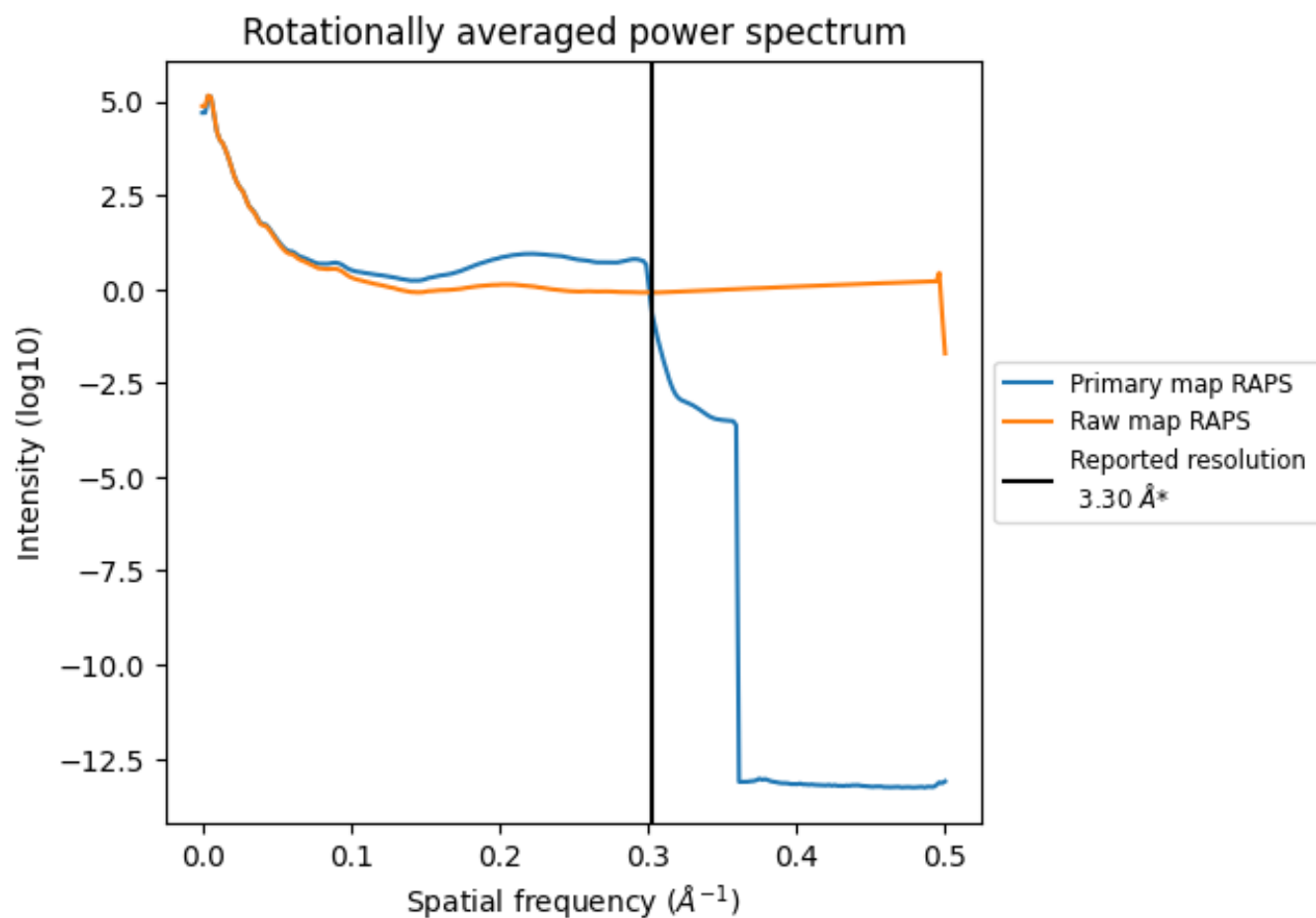
7.2 Volume estimate [i](#)



The volume at the recommended contour level is 26 nm³; this corresponds to an approximate mass of 24 kDa.

The volume estimate graph shows how the enclosed volume varies with the contour level. The recommended contour level is shown as a vertical line and the intersection between the line and the curve gives the volume of the enclosed surface at the given level.

7.3 Rotationally averaged power spectrum [i](#)

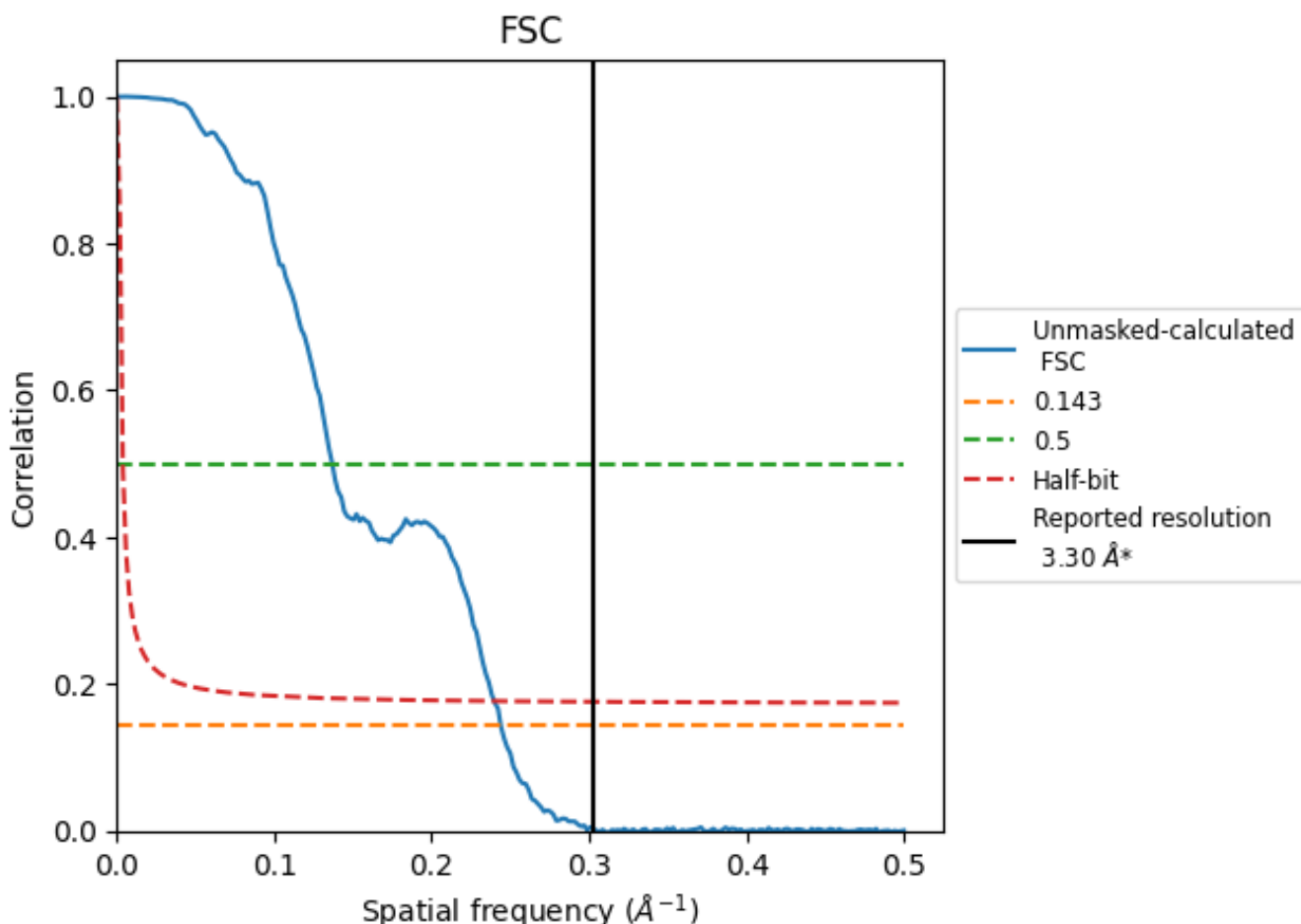


*Reported resolution corresponds to spatial frequency of 0.303 Å⁻¹

8 Fourier-Shell correlation [i](#)

Fourier-Shell Correlation (FSC) is the most commonly used method to estimate the resolution of single-particle and subtomogram-averaged maps. The shape of the curve depends on the imposed symmetry, mask and whether or not the two 3D reconstructions used were processed from a common reference. The reported resolution is shown as a black line. A curve is displayed for the half-bit criterion in addition to lines showing the 0.143 gold standard cut-off and 0.5 cut-off.

8.1 FSC [i](#)



*Reported resolution corresponds to spatial frequency of 0.303 \AA^{-1}

8.2 Resolution estimates [i](#)

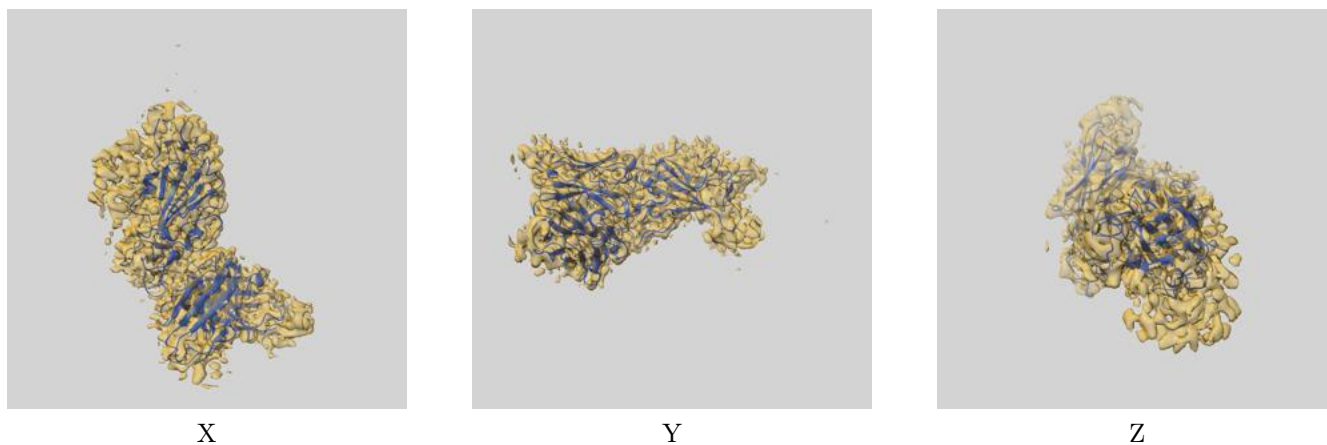
Resolution estimate (Å)	Estimation criterion (FSC cut-off)		
	0.143	0.5	Half-bit
Reported by author	3.30	-	-
Author-provided FSC curve	-	-	-
Unmasked-calculated*	4.10	7.30	4.17

*Resolution estimate based on FSC curve calculated by comparison of deposited half-maps. The value from deposited half-maps intersecting FSC 0.143 CUT-OFF 4.10 differs from the reported value 3.3 by more than 10 %

9 Map-model fit [i](#)

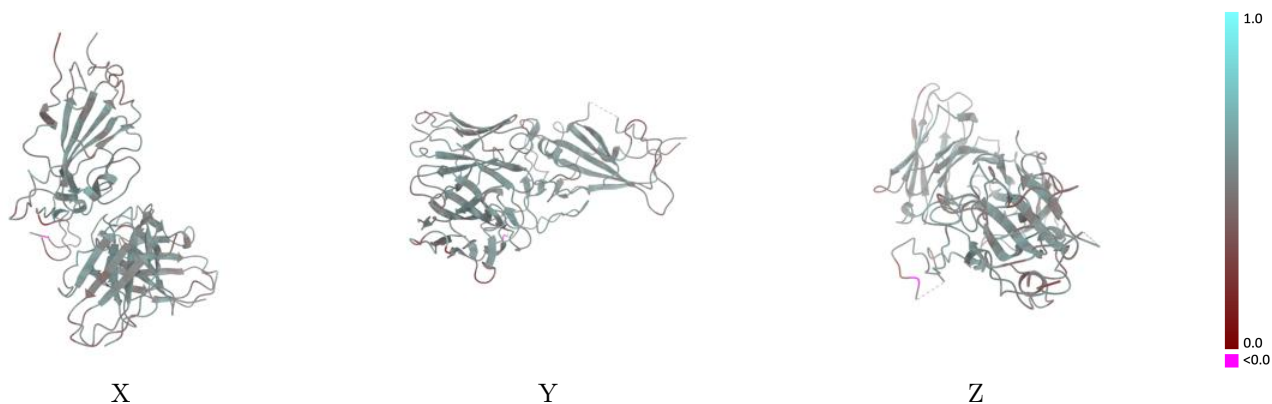
This section contains information regarding the fit between EMDB map EMD-43813 and PDB model 9ASD. Per-residue inclusion information can be found in section 3 on page 8.

9.1 Map-model overlay [i](#)



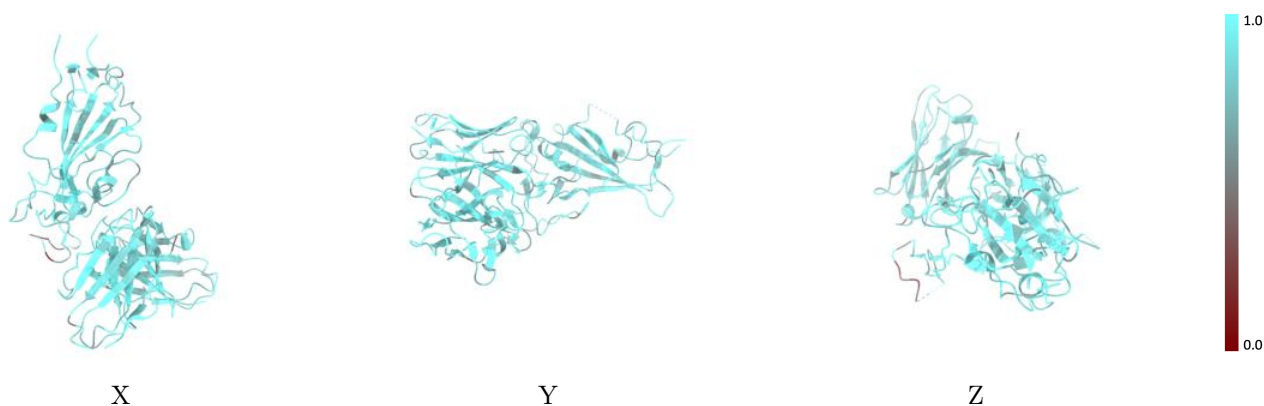
The images above show the 3D surface view of the map at the recommended contour level 0.6 at 50% transparency in yellow overlaid with a ribbon representation of the model coloured in blue. These images allow for the visual assessment of the quality of fit between the atomic model and the map.

9.2 Q-score mapped to coordinate model [i](#)



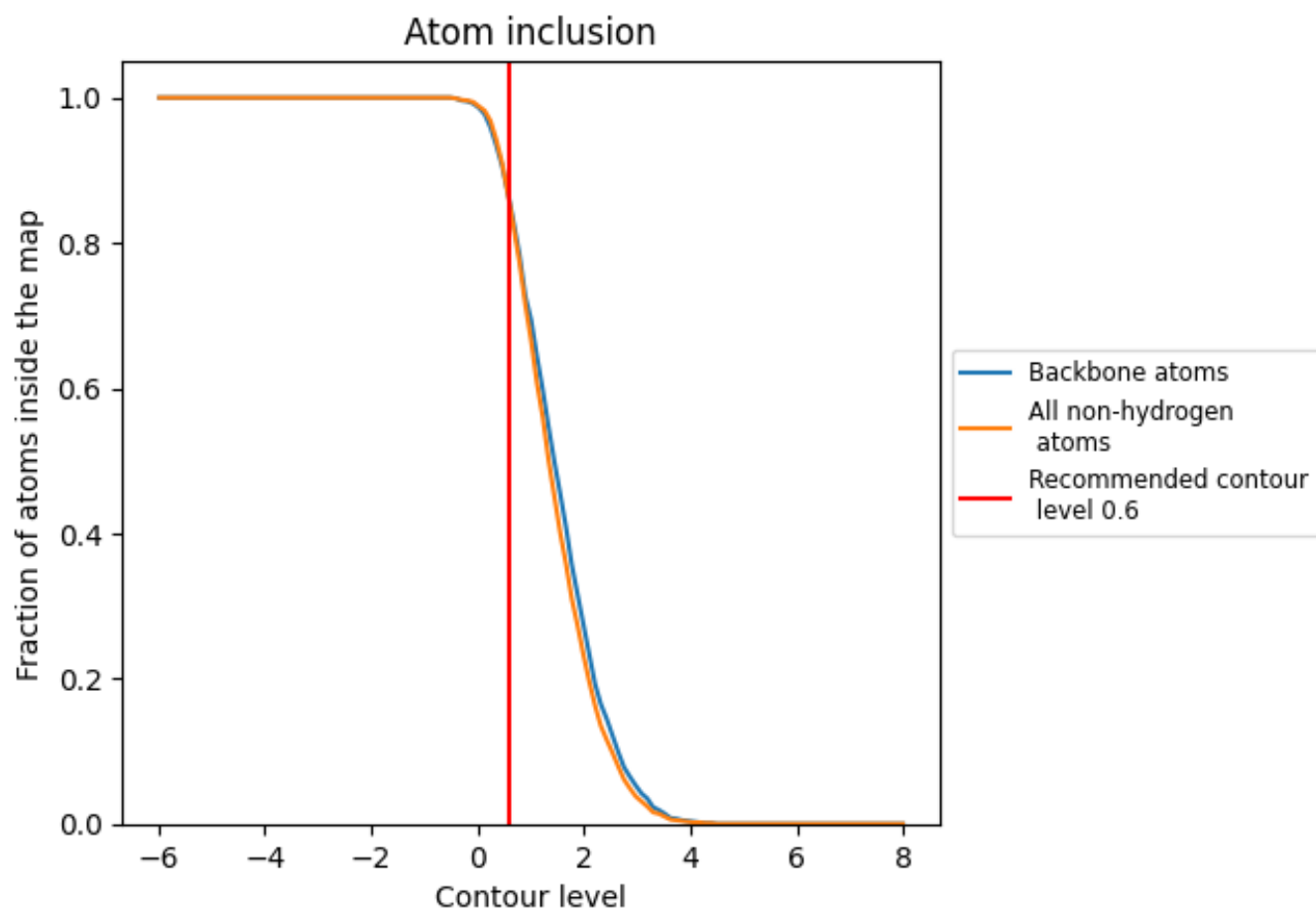
The images above show the model with each residue coloured according to its Q-score. This shows their resolvability in the map with higher Q-score values reflecting better resolvability. Please note: Q-score is calculating the resolvability of atoms, and thus high values are only expected at resolutions at which atoms can be resolved. Low Q-score values may therefore be expected for many entries.

9.3 Atom inclusion mapped to coordinate model [i](#)



The images above show the model with each residue coloured according to its atom inclusion. This shows to what extent they are inside the map at the recommended contour level (0.6).








9.4 Atom inclusion [i](#)



At the recommended contour level, 86% of all backbone atoms, 86% of all non-hydrogen atoms, are inside the map.

9.5 Map-model fit summary [i](#)

The table lists the average atom inclusion at the recommended contour level (0.6) and Q-score for the entire model and for each chain.

Chain	Atom inclusion	Q-score
All	 0.8570	 0.5060
H	 0.8740	 0.5130
L	 0.8720	 0.5200
R	 0.8400	 0.4960

