



# wwPDB X-ray Structure Validation Summary Report

Oct 28, 2024 – 02:34 PM EDT

PDB ID : 9AUQ  
Title : Crystal structure of 4-Fluoro-tryptophan labeled *Oscillatoria Agardhii* agglutinin  
Authors : Runge, B.R.; Zadorozhnyi, R.R.; Quinn, C.M.; Russell, R.W.; Lu, M.; Antolinez, S.; Struppe, J.; Schwieters, C.D.; Byeon, I.L.; Hadden-Perilla, J.; Gronenborn, A.M.; Polenova, T.  
Deposited on : 2024-02-29  
Resolution : 2.37 Å(reported)

This is a wwPDB X-ray Structure Validation Summary Report for a publicly released PDB entry.

We welcome your comments at [validation@mail.wwpdb.org](mailto:validation@mail.wwpdb.org)

A user guide is available at

<https://www.wwpdb.org/validation/2017/XrayValidationReportHelp>

with specific help available everywhere you see the  symbol.

The types of validation reports are described at

<http://www.wwpdb.org/validation/2017/FAQs#types>.

---

The following versions of software and data (see [references](#) ) were used in the production of this report:

MolProbity : 4.02b-467  
Mogul : 2022.3.0, CSD as543be (2022)  
Xtriage (Phenix) : 1.20.1  
EDS : 3.0  
Percentile statistics : 20231227.v01 (using entries in the PDB archive December 27th 2023)  
CCP4 : 9.0.003 (Gargrove)  
Density-Fitness : 1.0.11  
Ideal geometry (proteins) : Engh & Huber (2001)  
Ideal geometry (DNA, RNA) : Parkinson et al. (1996)  
Validation Pipeline (wwPDB-VP) : 2.39

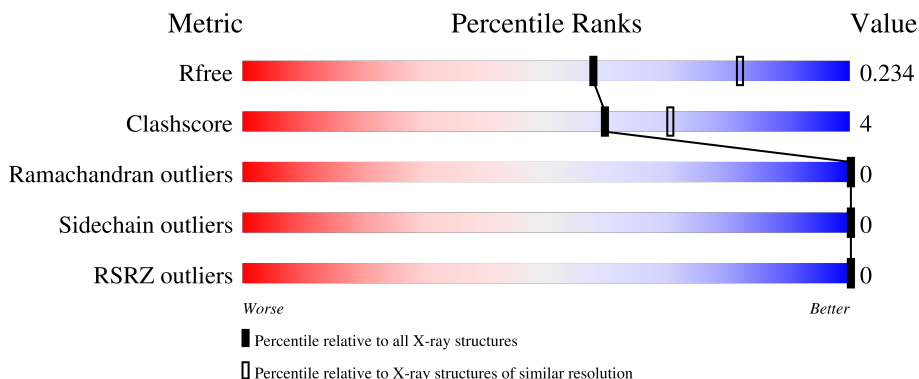
# 1 Overall quality at a glance

The following experimental techniques were used to determine the structure:

*X-RAY DIFFRACTION*



The reported resolution of this entry is 2.37 Å.

Percentile scores (ranging between 0-100) for global validation metrics of the entry are shown in the following graphic. The table shows the number of entries on which the scores are based.



Metric	Whole archive (#Entries)	Similar resolution (#Entries, resolution range(Å))
$R_{free}$	164625	6699 (2.40-2.36)
Clashscore	180529	7414 (2.40-2.36)
Ramachandran outliers	177936	7337 (2.40-2.36)
Sidechain outliers	177891	7338 (2.40-2.36)
RSRZ outliers	164620	6699 (2.40-2.36)

The table below summarises the geometric issues observed across the polymeric chains and their fit to the electron density. The red, orange, yellow and green segments of the lower bar indicate the fraction of residues that contain outliers for  $\geq 3$ , 2, 1 and 0 types of geometric quality criteria respectively. A grey segment represents the fraction of residues that are not modelled. The numeric value for each fraction is indicated below the corresponding segment, with a dot representing fractions  $\leq 5\%$ . The upper red bar (where present) indicates the fraction of residues that have poor fit to the electron density. The numeric value is given above the bar.

Mol	Chain	Length	Quality of chain
1	A	132	 84% 14%
1	B	132	 87% 12%

## 2 Entry composition [i](#)

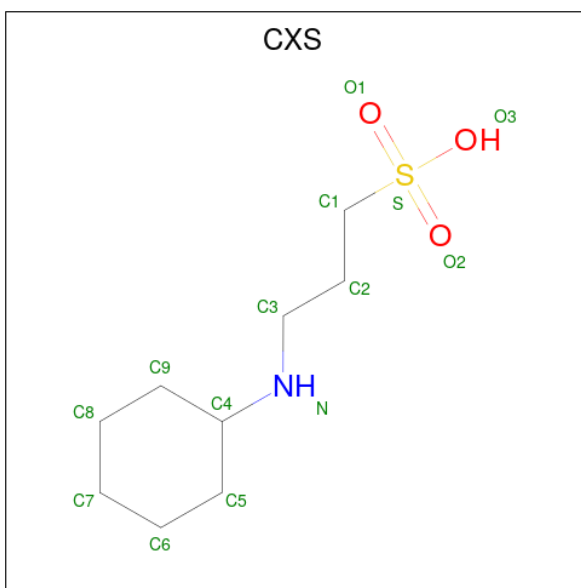
There are 3 unique types of molecules in this entry. The entry contains 2140 atoms, of which 0 are hydrogens and 0 are deuteriums.

In the tables below, the ZeroOcc column contains the number of atoms modelled with zero occupancy, the AltConf column contains the number of residues with at least one atom in alternate conformation and the Trace column contains the number of residues modelled with at most 2 atoms.

- Molecule 1 is a protein called Lectin.

Mol	Chain	Residues	Atoms					ZeroOcc	AltConf	Trace	
			Total	C	F	N	O				S
1	A	132	Total 992	C 603	F 6	N 171	O 210	S 2	13	1	0
1	B	132	Total 992	C 603	F 6	N 171	O 210	S 2	17	1	0

- Molecule 2 is 3-CYCLOHEXYL-1-PROPYLSULFONIC ACID (three-letter code: CXS) (formula: C<sub>9</sub>H<sub>19</sub>NO<sub>3</sub>S).



Mol	Chain	Residues	Atoms					ZeroOcc	AltConf
			Total	C	N	O	S		
2	A	1	Total 14	C 9	N 1	O 3	S 1	0	0
2	A	1	Total 14	C 9	N 1	O 3	S 1	0	0
2	B	1	Total 14	C 9	N 1	O 3	S 1	0	0
2	B	1	Total 14	C 9	N 1	O 3	S 1	0	0


- Molecule 3 is water.

<b>Mol</b>	<b>Chain</b>	<b>Residues</b>	<b>Atoms</b>		<b>ZeroOcc</b>	<b>AltConf</b>
3	A	45	Total 45	O 45	0	0
3	B	55	Total 55	O 55	0	0

### 3 Residue-property plots [i](#)

These plots are drawn for all protein, RNA, DNA and oligosaccharide chains in the entry. The first graphic for a chain summarises the proportions of the various outlier classes displayed in the second graphic. The second graphic shows the sequence view annotated by issues in geometry and electron density. Residues are color-coded according to the number of geometric quality criteria for which they contain at least one outlier: green = 0, yellow = 1, orange = 2 and red = 3 or more. A red dot above a residue indicates a poor fit to the electron density ( $RSRZ > 2$ ). Stretches of 2 or more consecutive residues without any outlier are shown as a green connector. Residues present in the sample, but not in the model, are shown in grey.

- Molecule 1: Lectin

Chain A:  84% 14%



- Molecule 1: Lectin

Chain B:  87% 12%



## 4 Data and refinement statistics

Property	Value	Source
Space group	P 1	Depositor
Cell constants a, b, c, $\alpha$ , $\beta$ , $\gamma$	42.48Å 47.30Å 47.28Å 78.44° 63.36° 63.37°	Depositor
Resolution (Å)	29.90 – 2.37 29.90 – 2.37	Depositor EDS
% Data completeness (in resolution range)	95.1 (29.90-2.37) 94.7 (29.90-2.37)	Depositor EDS
$R_{merge}$	0.01	Depositor
$R_{sym}$	(Not available)	Depositor
$\langle I/\sigma(I) \rangle$ <sup>1</sup>	28.91 (at 2.36Å)	Xtriage
Refinement program	PHENIX 1.19.2_4158	Depositor
R, $R_{free}$	0.165 , 0.234 0.167 , 0.234	Depositor DCC
$R_{free}$ test set	10165 reflections (10.03%)	wwPDB-VP
Wilson B-factor (Å <sup>2</sup> )	15.3	Xtriage
Anisotropy	0.261	Xtriage
Bulk solvent $k_{sol}$ (e/Å <sup>3</sup> ), $B_{sol}$ (Å <sup>2</sup> )	0.33 , 10.8	EDS
L-test for twinning <sup>2</sup>	$\langle  L  \rangle = 0.50$ , $\langle L^2 \rangle = 0.33$	Xtriage
Estimated twinning fraction	0.468 for h,h-l,k 0.468 for h,l,h-k 0.467 for h,h-k,h-l 0.048 for -h,-k,-h+l 0.048 for -h,-h+k,-l 0.048 for -h,-l,-k 0.047 for -h,-h+l,-h+k	Xtriage
$F_o, F_c$ correlation	0.96	EDS
Total number of atoms	2140	wwPDB-VP
Average B, all atoms (Å <sup>2</sup> )	14.0	wwPDB-VP

Xtriage's analysis on translational NCS is as follows: *The largest off-origin peak in the Patterson function is 10.09% of the height of the origin peak. No significant pseudotranslation is detected.*

<sup>1</sup>Intensities estimated from amplitudes.

<sup>2</sup>Theoretical values of  $\langle |L| \rangle$ ,  $\langle L^2 \rangle$  for acentric reflections are 0.5, 0.333 respectively for untwinned datasets, and 0.375, 0.2 for perfectly twinned datasets.

## 5 Model quality

### 5.1 Standard geometry

Bond lengths and bond angles in the following residue types are not validated in this section: 4FW, CXS

The Z score for a bond length (or angle) is the number of standard deviations the observed value is removed from the expected value. A bond length (or angle) with  $|Z| > 5$  is considered an outlier worth inspection. RMSZ is the root-mean-square of all Z scores of the bond lengths (or angles).

Mol	Chain	Bond lengths		Bond angles	
		RMSZ	# Z  >5	RMSZ	# Z  >5
1	A	0.43	0/909	0.67	0/1220
1	B	0.40	0/909	0.65	0/1220
All	All	0.41	0/1818	0.66	0/2440

There are no bond length outliers.

There are no bond angle outliers.

There are no chirality outliers.

There are no planarity outliers.

### 5.2 Too-close contacts

In the following table, the Non-H and H(model) columns list the number of non-hydrogen atoms and hydrogen atoms in the chain respectively. The H(added) column lists the number of hydrogen atoms added and optimized by MolProbity. The Clashes column lists the number of clashes within the asymmetric unit, whereas Symm-Clashes lists symmetry-related clashes.

Mol	Chain	Non-H	H(model)	H(added)	Clashes	Symm-Clashes
1	A	992	0	876	9	0
1	B	992	0	876	7	0
2	A	28	0	37	0	0
2	B	28	0	36	0	0
3	A	45	0	0	0	0
3	B	55	0	0	0	0
All	All	2140	0	1825	16	0

The all-atom clashscore is defined as the number of clashes found per 1000 atoms (including hydrogen atoms). The all-atom clashscore for this structure is 4.

The worst 5 of 16 close contacts within the same asymmetric unit are listed below, sorted by their

clash magnitude.

Atom-1	Atom-2	Interatomic distance (Å)	Clash overlap (Å)
1:B:66:LEU:HD11	1:B:72:GLU:HG3	1.85	0.58
1:B:2:ALA:HB1	1:B:132:LEU:HD11	1.86	0.56
1:A:17:4FW:CZ3	1:A:129:LYS:HG2	2.35	0.56
1:A:63:ALA:HB1	1:A:71:TYR:HB3	1.92	0.51
1:A:7:GLU:OE1	1:A:129:LYS:HE3	2.10	0.51

There are no symmetry-related clashes.

## 5.3 Torsion angles [i](#)

### 5.3.1 Protein backbone [i](#)

In the following table, the Percentiles column shows the percent Ramachandran outliers of the chain as a percentile score with respect to all X-ray entries followed by that with respect to entries of similar resolution.

The Analysed column shows the number of residues for which the backbone conformation was analysed, and the total number of residues.

Mol	Chain	Analysed	Favoured	Allowed	Outliers	Percentiles	
1	A	125/132 (95%)	125 (100%)	0	0	100	100
1	B	125/132 (95%)	124 (99%)	1 (1%)	0	100	100
All	All	250/264 (95%)	249 (100%)	1 (0%)	0	100	100

There are no Ramachandran outliers to report.

### 5.3.2 Protein sidechains [i](#)

In the following table, the Percentiles column shows the percent sidechain outliers of the chain as a percentile score with respect to all X-ray entries followed by that with respect to entries of similar resolution.

The Analysed column shows the number of residues for which the sidechain conformation was analysed, and the total number of residues.

Mol	Chain	Analysed	Rotameric	Outliers	Percentiles	
1	A	95/94 (101%)	95 (100%)	0	100	100
1	B	95/94 (101%)	95 (100%)	0	100	100

*Continued on next page...*



Continued from previous page...

Mol	Chain	Analysed	Rotameric	Outliers	Percentiles	
All	All	190/188 (101%)	190 (100%)	0	100	100

There are no protein residues with a non-rotameric sidechain to report.

Sometimes sidechains can be flipped to improve hydrogen bonding and reduce clashes. All (1) such sidechains are listed below:

Mol	Chain	Res	Type
1	B	97	ASN

### 5.3.3 RNA [i](#)

There are no RNA molecules in this entry.

## 5.4 Non-standard residues in protein, DNA, RNA chains [i](#)

12 non-standard protein/DNA/RNA residues are modelled in this entry.

In the following table, the Counts columns list the number of bonds (or angles) for which Mogul statistics could be retrieved, the number of bonds (or angles) that are observed in the model and the number of bonds (or angles) that are defined in the Chemical Component Dictionary. The Link column lists molecule types, if any, to which the group is linked. The Z score for a bond length (or angle) is the number of standard deviations the observed value is removed from the expected value. A bond length (or angle) with  $|Z| > 2$  is considered an outlier worth inspection. RMSZ is the root-mean-square of all Z scores of the bond lengths (or angles).

Mol	Type	Chain	Res	Link	Bond lengths			Bond angles		
					Counts	RMSZ	# Z  > 2	Counts	RMSZ	# Z  > 2
1	4FW	B	10	1	14,16,17	2.76	4 (28%)	11,22,24	2.28	5 (45%)
1	4FW	B	17	1	14,16,17	2.79	4 (28%)	11,22,24	2.65	6 (54%)
1	4FW	A	23	1	14,16,17	2.75	4 (28%)	11,22,24	2.73	6 (54%)
1	4FW	A	90	1	14,16,17	2.76	4 (28%)	11,22,24	2.51	6 (54%)
1	4FW	B	23	1	14,16,17	2.82	4 (28%)	11,22,24	2.61	6 (54%)
1	4FW	B	77	1	14,16,17	2.79	4 (28%)	11,22,24	2.20	5 (45%)
1	4FW	B	84	1	14,16,17	2.69	4 (28%)	11,22,24	2.61	6 (54%)
1	4FW	A	10	1	14,16,17	2.77	4 (28%)	11,22,24	2.29	4 (36%)
1	4FW	B	90	1	14,16,17	2.84	4 (28%)	11,22,24	2.34	6 (54%)
1	4FW	A	77	1	14,16,17	2.85	4 (28%)	11,22,24	2.25	5 (45%)
1	4FW	A	17	1	14,16,17	2.77	4 (28%)	11,22,24	2.37	4 (36%)
1	4FW	A	84	1	14,16,17	2.84	4 (28%)	11,22,24	2.43	6 (54%)

In the following table, the Chirals column lists the number of chiral outliers, the number of chiral centers analysed, the number of these observed in the model and the number defined in the Chemical Component Dictionary. Similar counts are reported in the Torsion and Rings columns. '-' means no outliers of that kind were identified.

Mol	Type	Chain	Res	Link	Chirals	Torsions	Rings
1	4FW	B	10	1	-	1/4/6/8	0/2/2/2
1	4FW	B	17	1	-	0/4/6/8	0/2/2/2
1	4FW	A	23	1	-	1/4/6/8	0/2/2/2
1	4FW	A	90	1	-	1/4/6/8	0/2/2/2
1	4FW	B	23	1	-	1/4/6/8	0/2/2/2
1	4FW	B	77	1	-	0/4/6/8	0/2/2/2
1	4FW	B	84	1	-	0/4/6/8	0/2/2/2
1	4FW	A	10	1	-	0/4/6/8	0/2/2/2
1	4FW	B	90	1	-	1/4/6/8	0/2/2/2
1	4FW	A	77	1	-	0/4/6/8	0/2/2/2
1	4FW	A	17	1	-	1/4/6/8	0/2/2/2
1	4FW	A	84	1	-	0/4/6/8	0/2/2/2

The worst 5 of 48 bond length outliers are listed below:

Mol	Chain	Res	Type	Atoms	Z	Observed(Å)	Ideal(Å)
1	B	10	4FW	CG-CD2	7.89	1.53	1.41
1	A	10	4FW	CG-CD2	7.88	1.53	1.41
1	B	90	4FW	CG-CD2	7.88	1.53	1.41
1	A	77	4FW	CG-CD2	7.87	1.53	1.41
1	A	84	4FW	CG-CD2	7.76	1.53	1.41

The worst 5 of 65 bond angle outliers are listed below:

Mol	Chain	Res	Type	Atoms	Z	Observed(°)	Ideal(°)
1	B	17	4FW	CZ3-CE3-CD2	-4.71	119.74	123.99
1	B	10	4FW	CZ3-CE3-CD2	-4.59	119.85	123.99
1	A	10	4FW	CZ3-CE3-CD2	-4.54	119.90	123.99
1	A	23	4FW	CZ3-CE3-CD2	-4.52	119.92	123.99
1	B	84	4FW	CZ3-CE3-CD2	-4.50	119.93	123.99

There are no chirality outliers.

5 of 6 torsion outliers are listed below:

Mol	Chain	Res	Type	Atoms
1	A	17	4FW	O-C-CA-CB
1	A	23	4FW	CA-CB-CG-CD1
1	A	90	4FW	CA-CB-CG-CD1

*Continued on next page...*

Continued from previous page...

Mol	Chain	Res	Type	Atoms
1	B	10	4FW	O-C-CA-CB
1	B	23	4FW	CA-CB-CG-CD1

There are no ring outliers.

3 monomers are involved in 3 short contacts:

Mol	Chain	Res	Type	Clashes	Symm-Clashes
1	A	90	4FW	1	0
1	B	90	4FW	1	0
1	A	17	4FW	1	0

## 5.5 Carbohydrates [i](#)

There are no oligosaccharides in this entry.

## 5.6 Ligand geometry [i](#)

4 ligands are modelled in this entry.

In the following table, the Counts columns list the number of bonds (or angles) for which Mogul statistics could be retrieved, the number of bonds (or angles) that are observed in the model and the number of bonds (or angles) that are defined in the Chemical Component Dictionary. The Link column lists molecule types, if any, to which the group is linked. The Z score for a bond length (or angle) is the number of standard deviations the observed value is removed from the expected value. A bond length (or angle) with  $|Z| > 2$  is considered an outlier worth inspection. RMSZ is the root-mean-square of all Z scores of the bond lengths (or angles).

Mol	Type	Chain	Res	Link	Bond lengths			Bond angles		
					Counts	RMSZ	# Z  > 2	Counts	RMSZ	# Z  > 2
2	CXS	A	202	-	14,14,14	2.08	2 (14%)	18,18,18	1.25	2 (11%)
2	CXS	B	201	-	14,14,14	2.35	2 (14%)	18,18,18	1.58	3 (16%)
2	CXS	B	202	-	14,14,14	2.34	2 (14%)	18,18,18	1.36	2 (11%)
2	CXS	A	201	-	14,14,14	2.29	2 (14%)	18,18,18	1.31	3 (16%)

In the following table, the Chirals column lists the number of chiral outliers, the number of chiral centers analysed, the number of these observed in the model and the number defined in the Chemical Component Dictionary. Similar counts are reported in the Torsion and Rings columns. '?' means no outliers of that kind were identified.

Mol	Type	Chain	Res	Link	Chirals	Torsions	Rings
2	CXS	A	202	-	-	0/8/16/16	0/1/1/1
2	CXS	B	201	-	-	2/8/16/16	0/1/1/1
2	CXS	B	202	-	-	0/8/16/16	0/1/1/1
2	CXS	A	201	-	-	0/8/16/16	0/1/1/1

The worst 5 of 8 bond length outliers are listed below:

Mol	Chain	Res	Type	Atoms	Z	Observed(Å)	Ideal(Å)
2	B	201	CXS	O1-S	6.42	1.63	1.45
2	B	202	CXS	O1-S	6.34	1.63	1.45
2	A	201	CXS	O1-S	6.26	1.62	1.45
2	A	202	CXS	C1-S	-6.25	1.68	1.77
2	B	201	CXS	C1-S	-5.79	1.69	1.77

The worst 5 of 10 bond angle outliers are listed below:

Mol	Chain	Res	Type	Atoms	Z	Observed(°)	Ideal(°)
2	B	201	CXS	C3-N-C4	4.59	123.02	114.18
2	B	202	CXS	C3-N-C4	4.00	121.89	114.18
2	A	202	CXS	C3-N-C4	3.58	121.08	114.18
2	A	201	CXS	C3-N-C4	3.40	120.72	114.18
2	B	201	CXS	O3-S-C1	2.91	111.69	106.00

There are no chirality outliers.

All (2) torsion outliers are listed below:

Mol	Chain	Res	Type	Atoms
2	B	201	CXS	C1-C2-C3-N
2	B	201	CXS	C5-C4-N-C3

There are no ring outliers.

No monomer is involved in short contacts.

## 5.7 Other polymers [i](#)

There are no such residues in this entry.

## 5.8 Polymer linkage issues [i](#)

There are no chain breaks in this entry.

## 6 Fit of model and data [i](#)

### 6.1 Protein, DNA and RNA chains [i](#)

In the following table, the column labelled ‘#RSRZ> 2’ contains the number (and percentage) of RSRZ outliers, followed by percent RSRZ outliers for the chain as percentile scores relative to all X-ray entries and entries of similar resolution. The OWAB column contains the minimum, median, 95<sup>th</sup> percentile and maximum values of the occupancy-weighted average B-factor per residue. The column labelled ‘Q< 0.9’ lists the number of (and percentage) of residues with an average occupancy less than 0.9.

Mol	Chain	Analysed	<RSRZ>	#RSRZ>2	OWAB(Å <sup>2</sup> )	Q<0.9
1	A	126/132 (95%)	-1.48	0 <a href="#">100</a> <a href="#">100</a>	6, 11, 24, 42	27 (21%)
1	B	126/132 (95%)	-1.49	0 <a href="#">100</a> <a href="#">100</a>	6, 11, 26, 43	32 (25%)
All	All	252/264 (95%)	-1.48	0 <a href="#">100</a> <a href="#">100</a>	6, 11, 26, 43	59 (23%)

There are no RSRZ outliers to report.

### 6.2 Non-standard residues in protein, DNA, RNA chains [i](#)

In the following table, the Atoms column lists the number of modelled atoms in the group and the number defined in the chemical component dictionary. The B-factors column lists the minimum, median, 95<sup>th</sup> percentile and maximum values of B factors of atoms in the group. The column labelled ‘Q< 0.9’ lists the number of atoms with occupancy less than 0.9.

Mol	Type	Chain	Res	Atoms	RSCC	RSR	B-factors(Å <sup>2</sup> )	Q<0.9
1	4FW	A	17	15/16	0.98	0.04	16,25,32,32	0
1	4FW	B	84	15/16	0.98	0.04	14,21,35,36	0
1	4FW	A	23	15/16	0.99	0.03	8,11,15,16	0
1	4FW	A	77	15/16	0.99	0.03	10,13,20,24	0
1	4FW	A	84	15/16	0.99	0.03	12,22,30,33	0
1	4FW	A	90	15/16	0.99	0.03	8,11,16,16	0
1	4FW	B	10	15/16	0.99	0.03	10,13,20,24	0
1	4FW	B	17	15/16	0.99	0.04	14,24,39,44	0
1	4FW	B	23	15/16	0.99	0.04	7,13,18,18	0
1	4FW	B	77	15/16	0.99	0.04	9,13,18,20	0
1	4FW	A	10	15/16	0.99	0.03	9,13,17,25	0
1	4FW	B	90	15/16	0.99	0.03	6,11,15,19	0

### 6.3 Carbohydrates [i](#)

There are no monosaccharides in this entry.

## 6.4 Ligands [i](#)

In the following table, the Atoms column lists the number of modelled atoms in the group and the number defined in the chemical component dictionary. The B-factors column lists the minimum, median, 95<sup>th</sup> percentile and maximum values of B factors of atoms in the group. The column labelled 'Q< 0.9' lists the number of atoms with occupancy less than 0.9.

Mol	Type	Chain	Res	Atoms	RSCC	RSR	B-factors(Å <sup>2</sup> )	Q<0.9
2	CXS	A	201	14/14	0.99	0.04	12,17,27,41	0
2	CXS	A	202	14/14	0.99	0.03	8,15,26,34	0
2	CXS	B	201	14/14	0.99	0.03	10,15,26,36	0
2	CXS	B	202	14/14	0.99	0.03	12,17,28,37	0

## 6.5 Other polymers [i](#)

There are no such residues in this entry.