



# Full wwPDB X-ray Structure Validation Report ⓘ

Nov 20, 2024 – 12:04 PM EST

PDB ID : 9AV5  
Title : Design and application of synthetic 17B-HSD13 substrates to drug discovery, and to reveal preserved catalytic activity of protective human variants  
Authors : Liu, S.; Garnsey, M.  
Deposited on : 2024-03-01  
Resolution : 2.36 Å(reported)

This is a Full wwPDB X-ray Structure Validation Report for a publicly released PDB entry.

We welcome your comments at [validation@mail.wwpdb.org](mailto:validation@mail.wwpdb.org)

A user guide is available at

<https://www.wwpdb.org/validation/2017/XrayValidationReportHelp>

with specific help available everywhere you see the ⓘ symbol.

The types of validation reports are described at

<http://www.wwpdb.org/validation/2017/FAQs#types>.

---

The following versions of software and data (see [references ⓘ](#)) were used in the production of this report:

MolProbity : 4.02b-467  
Mogul : 2022.3.0, CSD as543be (2022)  
Xtrriage (Phenix) : 1.21  
EDS : 3.0  
buster-report : 1.1.7 (2018)  
Percentile statistics : 20231227.v01 (using entries in the PDB archive December 27th 2023)  
CCP4 : 9.0.003 (Gargrove)  
Density-Fitness : 1.0.11  
Ideal geometry (proteins) : Engh & Huber (2001)  
Ideal geometry (DNA, RNA) : Parkinson et al. (1996)  
Validation Pipeline (wwPDB-VP) : 2.39

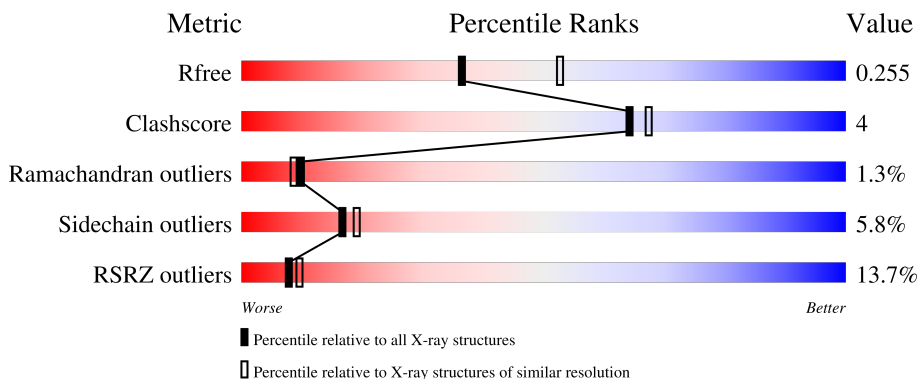
# 1 Overall quality at a glance

The following experimental techniques were used to determine the structure:

*X-RAY DIFFRACTION*

The reported resolution of this entry is 2.36 Å.

Percentile scores (ranging between 0-100) for global validation metrics of the entry are shown in the following graphic. The table shows the number of entries on which the scores are based.



Metric	Whole archive (#Entries)	Similar resolution (#Entries, resolution range(Å))
$R_{free}$	164625	1460 (2.36-2.36)
Clashscore	180529	1571 (2.36-2.36)
Ramachandran outliers	177936	1559 (2.36-2.36)
Sidechain outliers	177891	1559 (2.36-2.36)
RSRZ outliers	164620	1460 (2.36-2.36)

The table below summarises the geometric issues observed across the polymeric chains and their fit to the electron density. The red, orange, yellow and green segments of the lower bar indicate the fraction of residues that contain outliers for  $\geq 3$ , 2, 1 and 0 types of geometric quality criteria respectively. A grey segment represents the fraction of residues that are not modelled. The numeric value for each fraction is indicated below the corresponding segment, with a dot representing fractions  $\leq 5\%$ . The upper red bar (where present) indicates the fraction of residues that have poor fit to the electron density. The numeric value is given above the bar.

Mol	Chain	Length	Quality of chain
1	A	315	
1	B	315	

## 2 Entry composition i

There are 4 unique types of molecules in this entry. The entry contains 4403 atoms, of which 18 are hydrogens and 0 are deuteriums.

In the tables below, the ZeroOcc column contains the number of atoms modelled with zero occupancy, the AltConf column contains the number of residues with at least one atom in alternate conformation and the Trace column contains the number of residues modelled with at most 2 atoms.

- Molecule 1 is a protein called Hydroxysteroid 17-beta dehydrogenase 13.

Mol	Chain	Residues	Atoms					ZeroOcc	AltConf	Trace
			Total	C	N	O	S			
1	A	260	Total	C	N	O	S	0	0	0
			2045	1329	344	364	8			
1	B	280	Total	C	N	O	S	0	0	0
			2189	1419	369	393	8			

There are 40 discrepancies between the modelled and reference sequences:

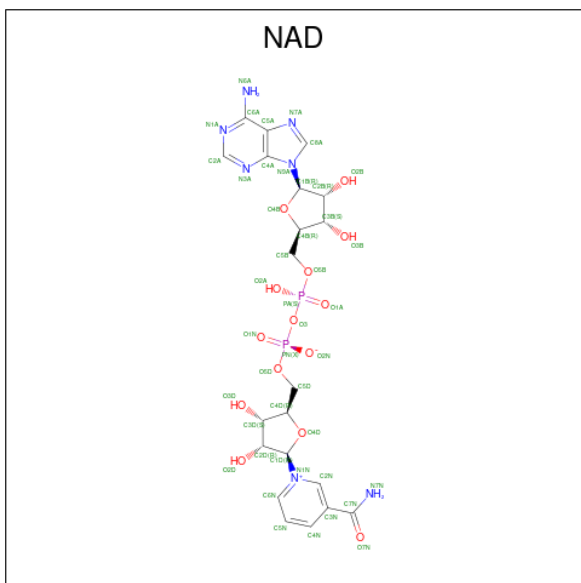
Chain	Residue	Modelled	Actual	Comment	Reference
A	0	MET	-	expression tag	UNP A0A8C0PP93
A	1	GLY	-	expression tag	UNP A0A8C0PP93
A	177	GLU	GLY	engineered mutation	UNP A0A8C0PP93
A	178	GLY	VAL	engineered mutation	UNP A0A8C0PP93
A	205	ALA	THR	engineered mutation	UNP A0A8C0PP93
A	293	VAL	ILE	engineered mutation	UNP A0A8C0PP93
A	301	GLY	-	expression tag	UNP A0A8C0PP93
A	302	SER	-	expression tag	UNP A0A8C0PP93
A	303	GLY	-	expression tag	UNP A0A8C0PP93
A	304	HIS	-	expression tag	UNP A0A8C0PP93
A	305	HIS	-	expression tag	UNP A0A8C0PP93
A	306	HIS	-	expression tag	UNP A0A8C0PP93
A	307	HIS	-	expression tag	UNP A0A8C0PP93
A	308	HIS	-	expression tag	UNP A0A8C0PP93
A	309	HIS	-	expression tag	UNP A0A8C0PP93
A	310	HIS	-	expression tag	UNP A0A8C0PP93
A	311	HIS	-	expression tag	UNP A0A8C0PP93
A	312	HIS	-	expression tag	UNP A0A8C0PP93
A	313	HIS	-	expression tag	UNP A0A8C0PP93
A	314	HIS	-	expression tag	UNP A0A8C0PP93
B	0	MET	-	expression tag	UNP A0A8C0PP93
B	1	GLY	-	expression tag	UNP A0A8C0PP93
B	177	GLU	GLY	engineered mutation	UNP A0A8C0PP93
B	178	GLY	VAL	engineered mutation	UNP A0A8C0PP93
B	205	ALA	THR	engineered mutation	UNP A0A8C0PP93

*Continued on next page...*

Continued from previous page...

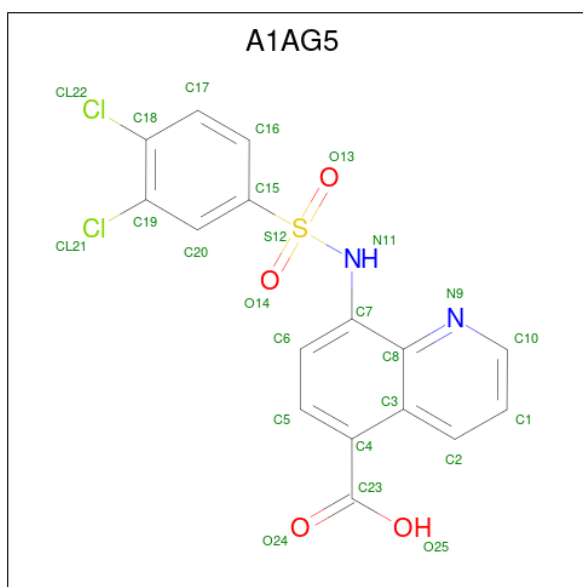
Chain	Residue	Modelled	Actual	Comment	Reference
B	293	VAL	ILE	engineered mutation	UNP A0A8C0PP93
B	301	GLY	-	expression tag	UNP A0A8C0PP93
B	302	SER	-	expression tag	UNP A0A8C0PP93
B	303	GLY	-	expression tag	UNP A0A8C0PP93
B	304	HIS	-	expression tag	UNP A0A8C0PP93
B	305	HIS	-	expression tag	UNP A0A8C0PP93
B	306	HIS	-	expression tag	UNP A0A8C0PP93
B	307	HIS	-	expression tag	UNP A0A8C0PP93
B	308	HIS	-	expression tag	UNP A0A8C0PP93
B	309	HIS	-	expression tag	UNP A0A8C0PP93
B	310	HIS	-	expression tag	UNP A0A8C0PP93
B	311	HIS	-	expression tag	UNP A0A8C0PP93
B	312	HIS	-	expression tag	UNP A0A8C0PP93
B	313	HIS	-	expression tag	UNP A0A8C0PP93
B	314	HIS	-	expression tag	UNP A0A8C0PP93

- Molecule 2 is NICOTINAMIDE-ADENINE-DINUCLEOTIDE (three-letter code: NAD) (formula: C<sub>21</sub>H<sub>27</sub>N<sub>7</sub>O<sub>14</sub>P<sub>2</sub>) (labeled as "Ligand of Interest" by depositor).



Mol	Chain	Residues	Atoms				ZeroOcc	AltConf	
2	A	1	Total	C	N	O	P	0	0
			44	21	7	14	2		
2	B	1	Total	C	N	O	P	0	0
			44	21	7	14	2		

- Molecule 3 is 8-(3,4-dichlorobenzene-1-sulfonamido)quinoline-5-carboxylic acid (three-letter code: A1AG5) (formula: C<sub>16</sub>H<sub>10</sub>Cl<sub>2</sub>N<sub>2</sub>O<sub>4</sub>S) (labeled as "Ligand of Interest" by depositor).



Mol	Chain	Residues	Atoms						ZeroOcc	AltConf	
			Total	C	Cl	H	N	O			S
3	A	1	34	16	2	9	2	4	1	9	0
3	B	1	34	16	2	9	2	4	1	9	0

- Molecule 4 is water.

Mol	Chain	Residues	Atoms	ZeroOcc	AltConf
4	A	9	Total O 9 9	0	0
4	B	4	Total O 4 4	0	0



## 4 Data and refinement statistics

Property	Value	Source
Space group	C 1 2 1	Depositor
Cell constants a, b, c, $\alpha$ , $\beta$ , $\gamma$	185.99Å 77.04Å 65.07Å 90.00° 90.58° 90.00°	Depositor
Resolution (Å)	32.53 – 2.36 32.53 – 2.36	Depositor EDS
% Data completeness (in resolution range)	51.4 (32.53-2.36) 51.4 (32.53-2.36)	Depositor EDS
$R_{merge}$	0.10	Depositor
$R_{sym}$	(Not available)	Depositor
$\langle I/\sigma(I) \rangle$ <sup>1</sup>	1.41 (at 2.36Å)	Xtrriage
Refinement program	BUSTER 2.11.8	Depositor
R, $R_{free}$	0.219 , 0.259 0.217 , 0.255	Depositor DCC
$R_{free}$ test set	946 reflections (4.86%)	wwPDB-VP
Wilson B-factor (Å <sup>2</sup> )	52.3	Xtrriage
Anisotropy	0.082	Xtrriage
Bulk solvent $k_{sol}$ (e/Å <sup>3</sup> ), $B_{sol}$ (Å <sup>2</sup> )	0.32 , 56.8	EDS
L-test for twinning <sup>2</sup>	$\langle  L  \rangle = 0.48$ , $\langle L^2 \rangle = 0.30$	Xtrriage
Estimated twinning fraction	0.036 for -h,-k,l	Xtrriage
$F_o, F_c$ correlation	0.92	EDS
Total number of atoms	4403	wwPDB-VP
Average B, all atoms (Å <sup>2</sup> )	67.0	wwPDB-VP

Xtrriage's analysis on translational NCS is as follows: *The largest off-origin peak in the Patterson function is 5.66% of the height of the origin peak. No significant pseudotranslation is detected.*

<sup>1</sup>Intensities estimated from amplitudes.

<sup>2</sup>Theoretical values of  $\langle |L| \rangle$ ,  $\langle L^2 \rangle$  for acentric reflections are 0.5, 0.333 respectively for untwinned datasets, and 0.375, 0.2 for perfectly twinned datasets.

## 5 Model quality [i](#)

### 5.1 Standard geometry [i](#)

Bond lengths and bond angles in the following residue types are not validated in this section: A1AG5, NAD

The Z score for a bond length (or angle) is the number of standard deviations the observed value is removed from the expected value. A bond length (or angle) with  $|Z| > 5$  is considered an outlier worth inspection. RMSZ is the root-mean-square of all Z scores of the bond lengths (or angles).

Mol	Chain	Bond lengths		Bond angles	
		RMSZ	# Z  >5	RMSZ	# Z  >5
1	A	0.39	0/2091	0.57	0/2838
1	B	0.37	0/2231	0.55	0/3025
All	All	0.38	0/4322	0.56	0/5863

There are no bond length outliers.

There are no bond angle outliers.

There are no chirality outliers.

There are no planarity outliers.

### 5.2 Too-close contacts [i](#)

In the following table, the Non-H and H(model) columns list the number of non-hydrogen atoms and hydrogen atoms in the chain respectively. The H(added) column lists the number of hydrogen atoms added and optimized by MolProbity. The Clashes column lists the number of clashes within the asymmetric unit, whereas Symm-Clashes lists symmetry-related clashes.

Mol	Chain	Non-H	H(model)	H(added)	Clashes	Symm-Clashes
1	A	2045	0	2104	18	0
1	B	2189	0	2255	19	0
2	A	44	0	26	1	0
2	B	44	0	26	1	0
3	A	25	9	0	0	0
3	B	25	9	0	0	0
4	A	9	0	0	0	0
4	B	4	0	0	0	0
All	All	4385	18	4411	33	0

The all-atom clashscore is defined as the number of clashes found per 1000 atoms (including hydrogen atoms). The all-atom clashscore for this structure is 4.



All (33) close contacts within the same asymmetric unit are listed below, sorted by their clash magnitude.

Atom-1	Atom-2	Interatomic distance (Å)	Clash overlap (Å)
1:B:123:THR:H	1:B:144:ASN:HD21	1.25	0.84
1:A:123:THR:H	1:A:144:ASN:HD21	1.25	0.82
1:B:279:ALA:HA	1:B:282:ASN:HB2	1.74	0.69
1:A:191:ALA:HB2	1:B:191:ALA:HB2	1.85	0.57
1:A:46:HIS:HD2	2:A:401:NAD:O1A	1.88	0.57
1:B:46:HIS:HD2	2:B:401:NAD:O1A	1.87	0.56
1:B:42:THR:O	1:B:120:ASN:HB3	2.06	0.55
1:A:32:LYS:NZ	1:A:253:ASN:HD21	2.06	0.53
1:B:208:ILE:HG21	1:B:211:ILE:HD12	1.92	0.52
1:A:208:ILE:HG21	1:A:211:ILE:HD12	1.91	0.52
1:B:122:GLY:HA2	1:B:144:ASN:ND2	2.25	0.52
1:A:122:GLY:HA2	1:A:144:ASN:ND2	2.25	0.51
1:A:180:PRO:HB3	1:B:202:GLU:HA	1.92	0.51
1:A:269:LEU:HD12	1:B:287:ILE:HD13	1.92	0.51
1:A:123:THR:N	1:A:144:ASN:HD21	2.02	0.51
1:B:55:GLU:O	1:B:59:GLN:HG2	2.10	0.50
1:A:55:GLU:O	1:A:59:GLN:HG2	2.12	0.50
1:B:123:THR:N	1:B:144:ASN:HD21	2.02	0.47
1:B:173:VAL:HG11	1:B:219:VAL:HG12	1.98	0.46
1:B:117:LEU:HD22	1:B:155:LEU:HD12	1.99	0.45
1:B:189:LYS:HD3	1:B:189:LYS:HA	1.85	0.44
1:A:39:VAL:HG22	1:A:116:ILE:HB	2.01	0.43
1:A:202:GLU:HA	1:B:180:PRO:HB3	2.01	0.43
1:B:39:VAL:HG22	1:B:116:ILE:HB	2.01	0.42
1:B:18:TYR:CZ	1:B:288:GLN:HG3	2.54	0.42
1:B:54:TYR:HD1	1:B:80:CYS:HG	1.67	0.42
1:A:247:ILE:HD12	1:A:247:ILE:HA	1.96	0.42
1:A:15:ILE:H	1:A:15:ILE:HD12	1.85	0.41
1:A:42:THR:O	1:A:120:ASN:HB3	2.21	0.41
1:A:221:VAL:HG21	1:A:242:VAL:HG21	2.02	0.41
1:B:145:ILE:HD13	1:B:192:ALA:HA	2.03	0.40
1:A:100:ILE:O	1:A:104:VAL:HG23	2.21	0.40
1:A:127:ALA:HB3	1:A:132:THR:HG22	2.02	0.40

There are no symmetry-related clashes.

## 5.3 Torsion angles [i](#)

### 5.3.1 Protein backbone [i](#)

In the following table, the Percentiles column shows the percent Ramachandran outliers of the chain as a percentile score with respect to all X-ray entries followed by that with respect to entries of similar resolution.

The Analysed column shows the number of residues for which the backbone conformation was analysed, and the total number of residues.

Mol	Chain	Analysed	Favoured	Allowed	Outliers	Percentiles	
1	A	258/315 (82%)	247 (96%)	8 (3%)	3 (1%)	11	10
1	B	274/315 (87%)	261 (95%)	9 (3%)	4 (2%)	8	7
All	All	532/630 (84%)	508 (96%)	17 (3%)	7 (1%)	10	8

All (7) Ramachandran outliers are listed below:

Mol	Chain	Res	Type
1	A	172	SER
1	B	28	PRO
1	B	172	SER
1	A	232	ARG
1	A	219	VAL
1	B	219	VAL
1	B	268	ILE

### 5.3.2 Protein sidechains [i](#)

In the following table, the Percentiles column shows the percent sidechain outliers of the chain as a percentile score with respect to all X-ray entries followed by that with respect to entries of similar resolution.

The Analysed column shows the number of residues for which the sidechain conformation was analysed, and the total number of residues.

Mol	Chain	Analysed	Rotameric	Outliers	Percentiles	
1	A	224/271 (83%)	211 (94%)	13 (6%)	17	19
1	B	239/271 (88%)	225 (94%)	14 (6%)	16	18
All	All	463/542 (85%)	436 (94%)	27 (6%)	17	19

All (27) residues with a non-rotameric sidechain are listed below:

Mol	Chain	Res	Type
1	A	20	GLU
1	A	26	PHE
1	A	27	PHE
1	A	98	GLU
1	A	109	LYS
1	A	153	LYS
1	A	158	SER
1	A	161	LYS
1	A	173	VAL
1	A	231	THR
1	A	238	GLU
1	A	264	ASN
1	A	267	LEU
1	B	23	VAL
1	B	27	PHE
1	B	98	GLU
1	B	109	LYS
1	B	153	LYS
1	B	161	LYS
1	B	173	VAL
1	B	197	ARG
1	B	227	LYS
1	B	238	GLU
1	B	264	ASN
1	B	271	LYS
1	B	281	ILE
1	B	289	PHE

Sometimes sidechains can be flipped to improve hydrogen bonding and reduce clashes. All (10) such sidechains are listed below:

Mol	Chain	Res	Type
1	A	46	HIS
1	A	119	ASN
1	A	144	ASN
1	A	253	ASN
1	A	264	ASN
1	B	46	HIS
1	B	119	ASN
1	B	144	ASN
1	B	253	ASN
1	B	264	ASN

### 5.3.3 RNA [i](#)

There are no RNA molecules in this entry.

## 5.4 Non-standard residues in protein, DNA, RNA chains [i](#)

There are no non-standard protein/DNA/RNA residues in this entry.

## 5.5 Carbohydrates [i](#)

There are no oligosaccharides in this entry.

## 5.6 Ligand geometry [i](#)

4 ligands are modelled in this entry.

In the following table, the Counts columns list the number of bonds (or angles) for which Mogul statistics could be retrieved, the number of bonds (or angles) that are observed in the model and the number of bonds (or angles) that are defined in the Chemical Component Dictionary. The Link column lists molecule types, if any, to which the group is linked. The Z score for a bond length (or angle) is the number of standard deviations the observed value is removed from the expected value. A bond length (or angle) with  $|Z| > 2$  is considered an outlier worth inspection. RMSZ is the root-mean-square of all Z scores of the bond lengths (or angles).

Mol	Type	Chain	Res	Link	Bond lengths			Bond angles		
					Counts	RMSZ	# Z  > 2	Counts	RMSZ	# Z  > 2
3	A1AG5	B	402	-	27,27,27	0.20	0	40,40,40	0.38	0
2	NAD	B	401	-	42,48,48	0.63	0	50,73,73	0.72	2 (4%)
3	A1AG5	A	402	-	27,27,27	0.16	0	40,40,40	0.42	0
2	NAD	A	401	-	42,48,48	0.67	0	50,73,73	0.86	2 (4%)

In the following table, the Chirals column lists the number of chiral outliers, the number of chiral centers analysed, the number of these observed in the model and the number defined in the Chemical Component Dictionary. Similar counts are reported in the Torsion and Rings columns. '-' means no outliers of that kind were identified.

Mol	Type	Chain	Res	Link	Chirals	Torsions	Rings
3	A1AG5	B	402	-	-	5/15/15/15	0/3/3/3
2	NAD	B	401	-	-	6/26/62/62	0/5/5/5
3	A1AG5	A	402	-	-	5/15/15/15	0/3/3/3
2	NAD	A	401	-	-	11/26/62/62	0/5/5/5

There are no bond length outliers.

All (4) bond angle outliers are listed below:

Mol	Chain	Res	Type	Atoms	Z	Observed(°)	Ideal(°)
2	A	401	NAD	C4B-O4B-C1B	-3.63	106.60	109.92
2	A	401	NAD	C5A-C6A-N6A	2.49	124.10	120.31
2	B	401	NAD	C5A-C6A-N6A	2.28	123.79	120.31
2	B	401	NAD	C4B-O4B-C1B	-2.07	108.03	109.92

There are no chirality outliers.

All (27) torsion outliers are listed below:

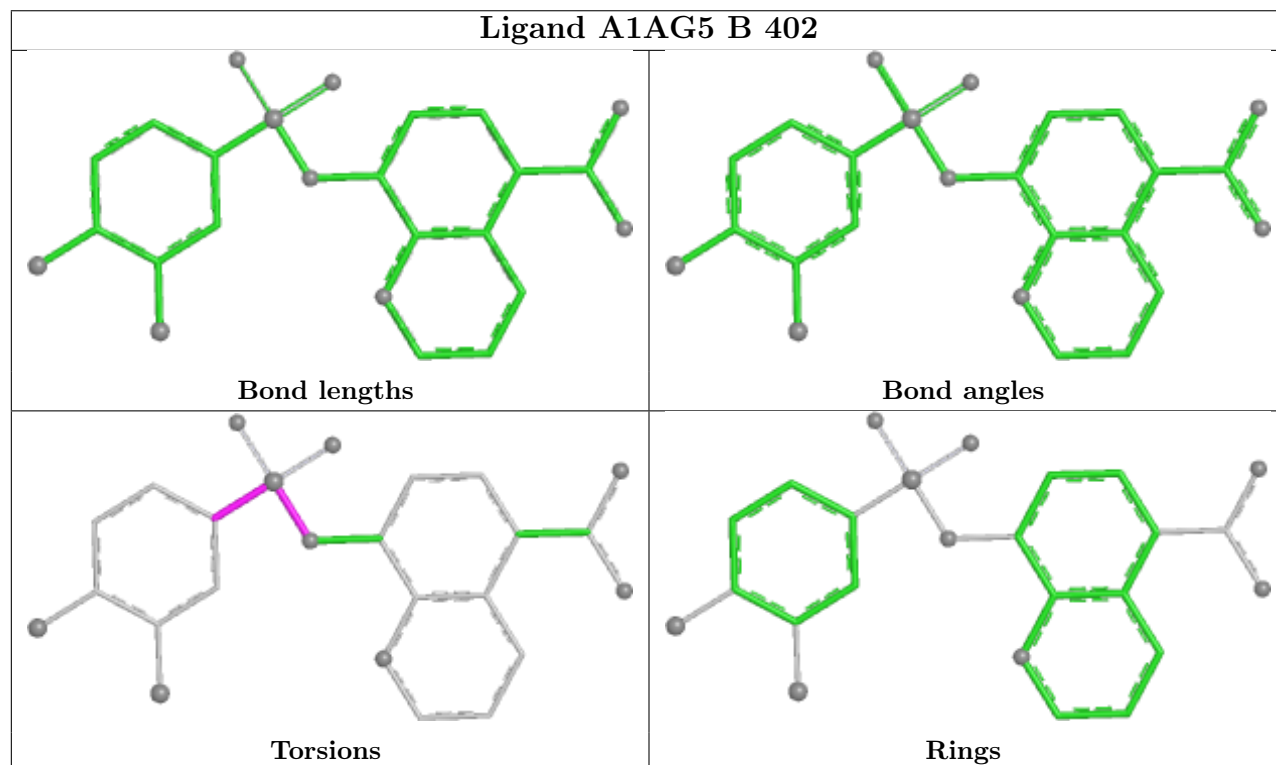
Mol	Chain	Res	Type	Atoms
2	A	401	NAD	C5B-O5B-PA-O2A
2	A	401	NAD	C5D-O5D-PN-O1N
2	A	401	NAD	O4D-C1D-N1N-C2N
2	A	401	NAD	O4D-C1D-N1N-C6N
2	A	401	NAD	C2D-C1D-N1N-C6N
2	B	401	NAD	C5D-O5D-PN-O3
2	B	401	NAD	C5D-O5D-PN-O1N
2	B	401	NAD	O4D-C1D-N1N-C2N
3	A	402	A1AG5	C20-C15-S12-N11
3	B	402	A1AG5	C20-C15-S12-N11
3	A	402	A1AG5	C16-C15-S12-N11
3	B	402	A1AG5	C16-C15-S12-N11
3	A	402	A1AG5	C16-C15-S12-O13
3	B	402	A1AG5	C16-C15-S12-O13
3	A	402	A1AG5	C20-C15-S12-O13
3	B	402	A1AG5	C20-C15-S12-O13
2	A	401	NAD	PN-O3-PA-O1A
2	A	401	NAD	C5B-O5B-PA-O1A
2	A	401	NAD	C5B-O5B-PA-O3
2	A	401	NAD	C5D-O5D-PN-O3
2	A	401	NAD	C5D-O5D-PN-O2N
2	B	401	NAD	C5D-O5D-PN-O2N
2	B	401	NAD	C2D-C1D-N1N-C6N
3	B	402	A1AG5	C7-N11-S12-O14
3	A	402	A1AG5	C7-N11-S12-O14
2	A	401	NAD	O4B-C4B-C5B-O5B
2	B	401	NAD	O4D-C1D-N1N-C6N

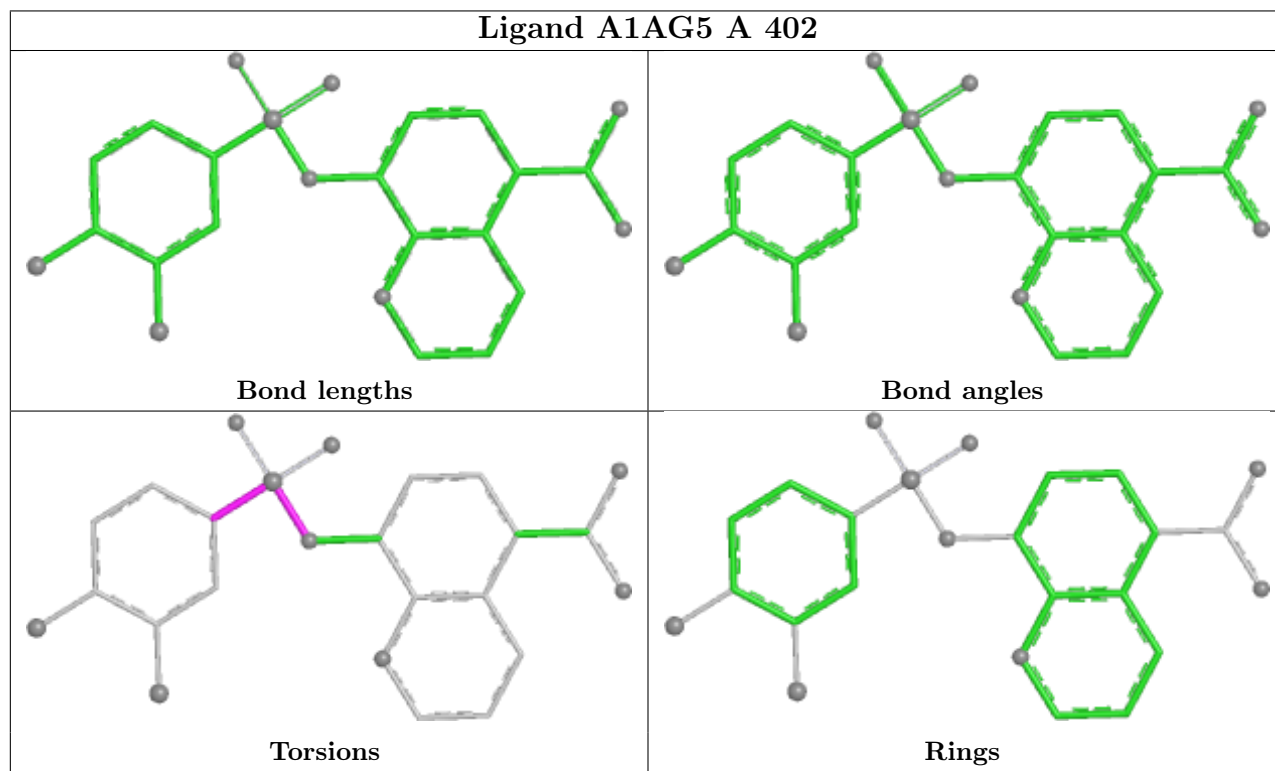
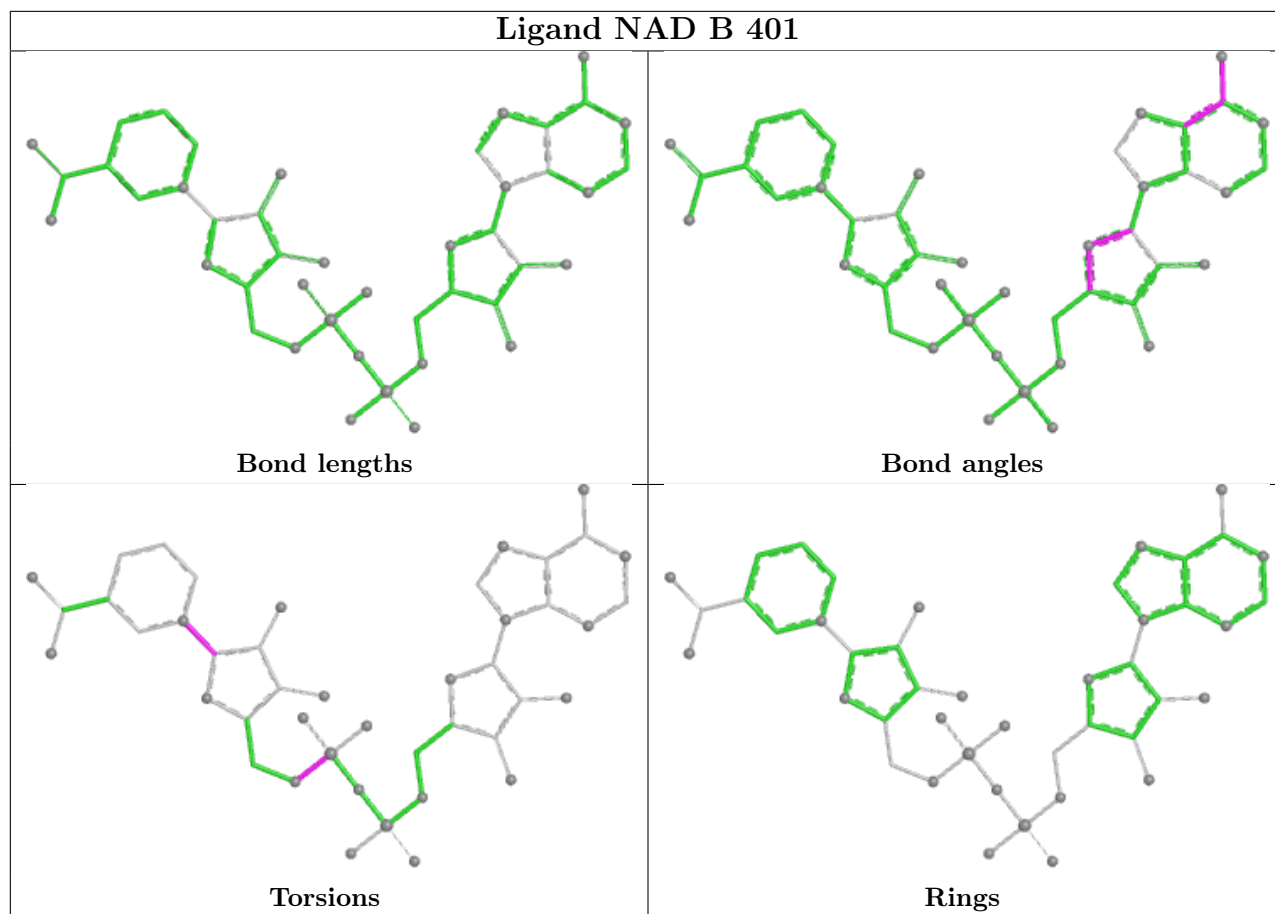
There are no ring outliers.

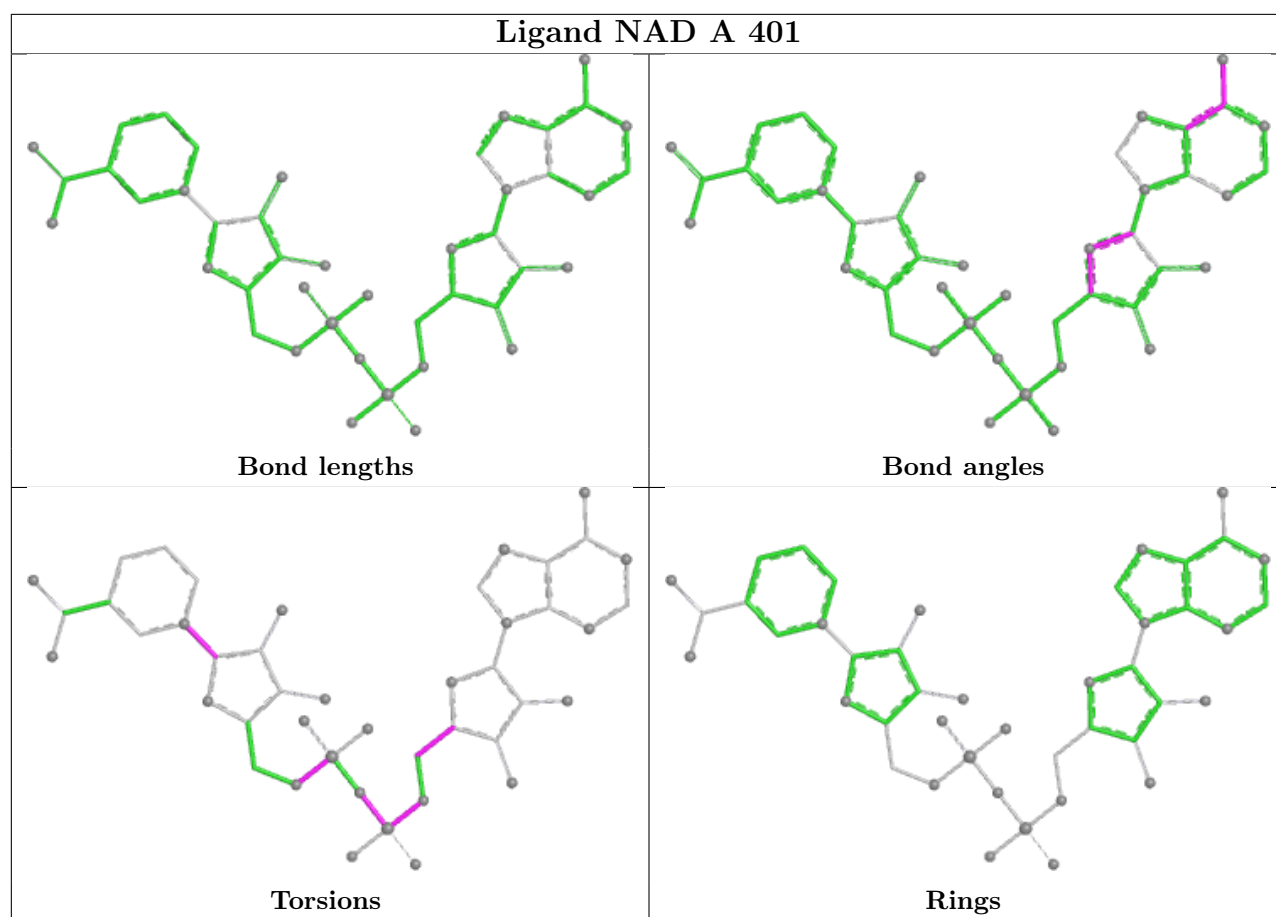
2 monomers are involved in 2 short contacts:

Mol	Chain	Res	Type	Clashes	Symm-Clashes
2	B	401	NAD	1	0
2	A	401	NAD	1	0

The following is a two-dimensional graphical depiction of Mogul quality analysis of bond lengths, bond angles, torsion angles, and ring geometry for all instances of the Ligand of Interest. In addition, ligands with molecular weight > 250 and outliers as shown on the validation Tables will also be included. For torsion angles, if less than 5% of the Mogul distribution of torsion angles is within 10 degrees of the torsion angle in question, then that torsion angle is considered an outlier. Any bond that is central to one or more torsion angles identified as an outlier by Mogul will be highlighted in the graph. For rings, the root-mean-square deviation (RMSD) between the ring in question and similar rings identified by Mogul is calculated over all ring torsion angles. If the average RMSD is greater than 60 degrees and the minimal RMSD between the ring in question and any Mogul-identified rings is also greater than 60 degrees, then that ring is considered an outlier. The outliers are highlighted in purple. The color gray indicates Mogul did not find sufficient equivalents in the CSD to analyse the geometry.







## 5.7 Other polymers [i](#)

There are no such residues in this entry.

## 5.8 Polymer linkage issues [i](#)

There are no chain breaks in this entry.



## 6 Fit of model and data

### 6.1 Protein, DNA and RNA chains

In the following table, the column labelled ‘#RSRZ > 2’ contains the number (and percentage) of RSRZ outliers, followed by percent RSRZ outliers for the chain as percentile scores relative to all X-ray entries and entries of similar resolution. The OWAB column contains the minimum, median, 95<sup>th</sup> percentile and maximum values of the occupancy-weighted average B-factor per residue. The column labelled ‘Q < 0.9’ lists the number of (and percentage) of residues with an average occupancy less than 0.9.

Mol	Chain	Analysed	<RSRZ>	#RSRZ>2	OWAB(Å <sup>2</sup> )	Q<0.9
1	A	260/315 (82%)	0.53	25 (9%) 15 17	37, 52, 106, 119	0
1	B	280/315 (88%)	0.95	49 (17%) 5 6	37, 60, 179, 214	0
All	All	540/630 (85%)	0.75	74 (13%) 8 9	37, 55, 151, 214	0

All (74) RSRZ outliers are listed below:

Mol	Chain	Res	Type	RSRZ
1	B	18	TYR	9.5
1	B	22	LEU	9.3
1	A	273	LEU	7.8
1	A	14	ILE	7.1
1	B	9	LEU	6.5
1	B	287	ILE	6.4
1	A	234	TRP	6.4
1	B	5	LEU	5.9
1	B	19	LEU	5.4
1	B	4	ILE	5.3
1	B	28	PRO	5.3
1	B	7	LEU	5.1
1	A	15	ILE	5.0
1	B	279	ALA	4.9
1	B	27	PHE	4.9
1	B	280	ALA	4.7
1	B	15	ILE	4.7
1	B	8	LEU	4.6
1	B	10	LEU	4.6
1	B	278	LEU	4.6
1	B	23	VAL	4.5
1	A	26	PHE	4.5
1	B	25	VAL	4.4
1	B	271	LYS	4.3

*Continued on next page...*

*Continued from previous page...*

<b>Mol</b>	<b>Chain</b>	<b>Res</b>	<b>Type</b>	<b>RSRZ</b>
1	B	26	PHE	4.3
1	B	16	TYR	4.2
1	A	235	PRO	4.2
1	B	12	LEU	4.1
1	A	16	TYR	4.0
1	A	22	LEU	3.9
1	B	30	LYS	3.8
1	A	271	LYS	3.7
1	A	25	VAL	3.6
1	A	19	LEU	3.6
1	B	11	LEU	3.4
1	B	277	ALA	3.4
1	B	284	LEU	3.3
1	A	21	ALA	3.3
1	B	281	ILE	3.2
1	A	272	PHE	3.2
1	B	267	LEU	3.1
1	B	289	PHE	3.1
1	B	6	ASP	3.1
1	B	246	LEU	3.0
1	A	262	TYR	3.0
1	B	29	ARG	3.0
1	A	264	ASN	3.0
1	B	21	ALA	3.0
1	A	231	THR	2.9
1	B	266	TYR	2.9
1	B	13	THR	2.8
1	A	233	LEU	2.7
1	A	225	PHE	2.7
1	B	272	PHE	2.7
1	A	269	LEU	2.7
1	B	290	GLU	2.7
1	A	27	PHE	2.7
1	B	273	LEU	2.6
1	B	14	ILE	2.6
1	A	23	VAL	2.5
1	B	262	TYR	2.5
1	B	17	SER	2.4
1	A	18	TYR	2.4
1	B	270	ASP	2.4
1	B	224	GLY	2.4
1	A	29	ARG	2.3

*Continued on next page...*

*Continued from previous page...*

Mol	Chain	Res	Type	RSRZ
1	B	288	GLN	2.3
1	B	32	LYS	2.2
1	A	20	GLU	2.2
1	B	282	ASN	2.2
1	B	24	LYS	2.2
1	B	286	ASN	2.0
1	B	258	PHE	2.0
1	A	265	ILE	2.0

## 6.2 Non-standard residues in protein, DNA, RNA chains [i](#)

There are no non-standard protein/DNA/RNA residues in this entry.

## 6.3 Carbohydrates [i](#)

There are no monosaccharides in this entry.

## 6.4 Ligands [i](#)

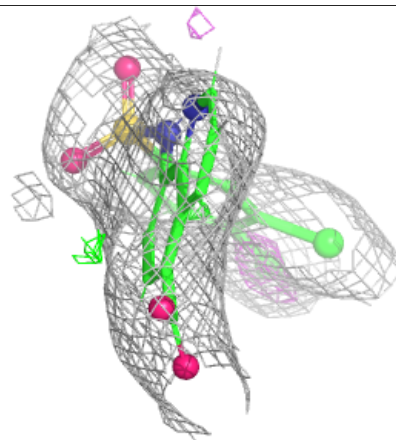
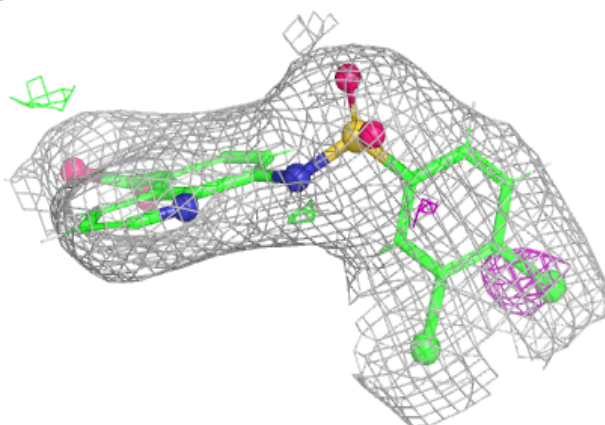
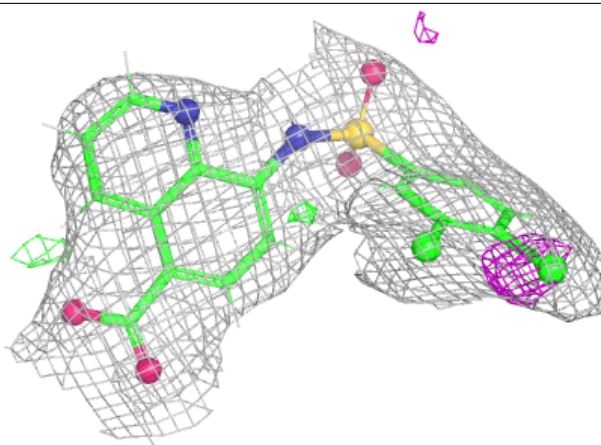
In the following table, the Atoms column lists the number of modelled atoms in the group and the number defined in the chemical component dictionary. The B-factors column lists the minimum, median, 95<sup>th</sup> percentile and maximum values of B factors of atoms in the group. The column labelled 'Q< 0.9' lists the number of atoms with occupancy less than 0.9.

Mol	Type	Chain	Res	Atoms	RSCC	RSR	B-factors(Å <sup>2</sup> )	Q<0.9
3	A1AG5	A	402	25/25	0.93	0.11	47,61,68,69	9
3	A1AG5	B	402	25/25	0.93	0.10	54,62,70,80	9
2	NAD	A	401	44/44	0.96	0.08	44,47,48,49	0
2	NAD	B	401	44/44	0.96	0.07	42,46,48,49	0

The following is a graphical depiction of the model fit to experimental electron density of all instances of the Ligand of Interest. In addition, ligands with molecular weight > 250 and outliers as shown on the geometry validation Tables will also be included. Each fit is shown from different orientation to approximate a three-dimensional view.

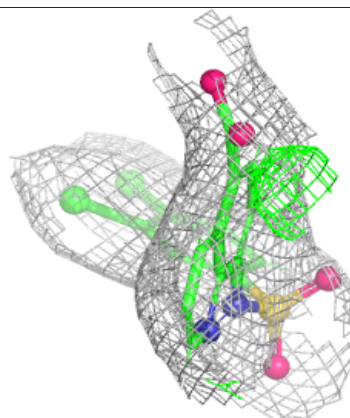
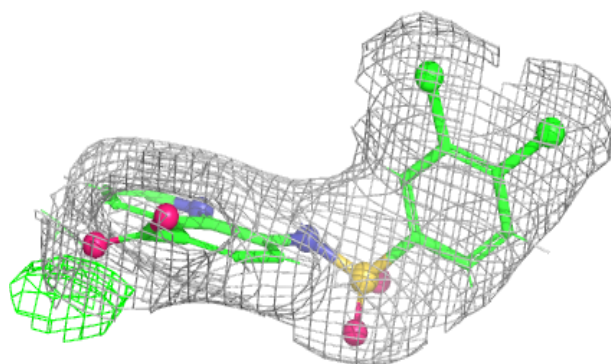
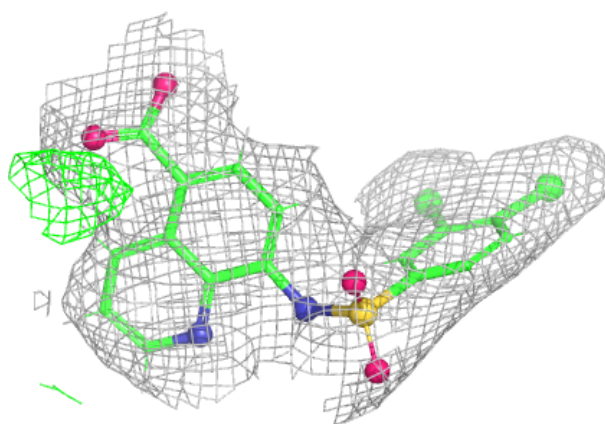
**Electron density around A1AG5 A 402:**

$2mF_o-DF_c$  (at 0.7 rmsd) in gray  
 $mF_o-DF_c$  (at 3 rmsd) in purple (negative)  
and green (positive)

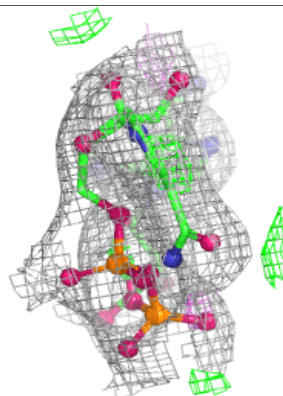
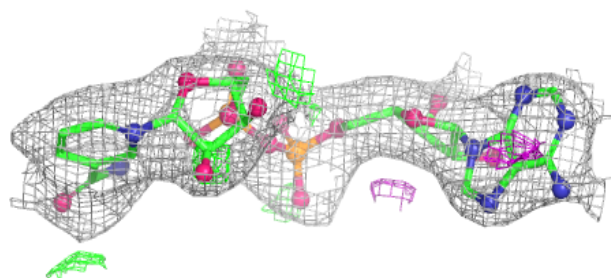
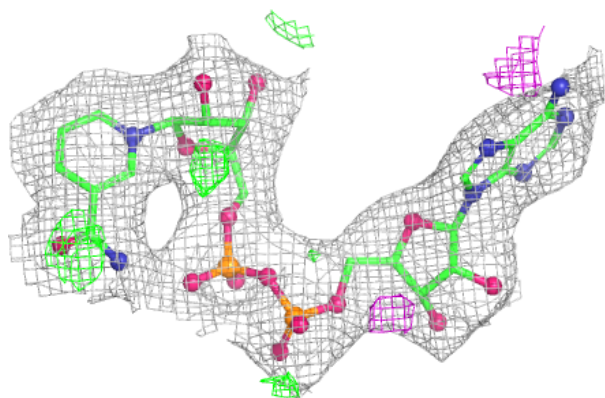


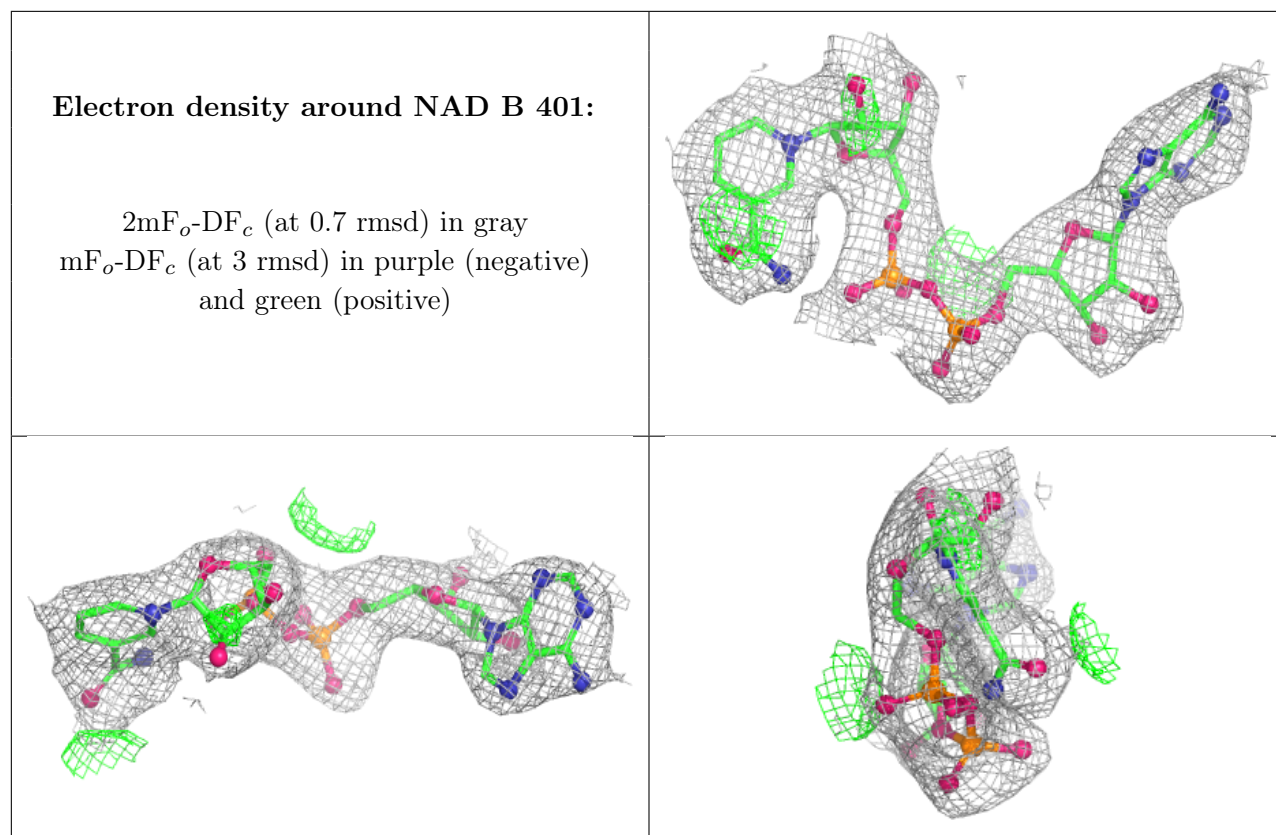
**Electron density around A1AG5 B 402:**

$2mF_o-DF_c$  (at 0.7 rmsd) in gray  
 $mF_o-DF_c$  (at 3 rmsd) in purple (negative)  
and green (positive)

**Electron density around NAD A 401:**

$2mF_o-DF_c$  (at 0.7 rmsd) in gray  
 $mF_o-DF_c$  (at 3 rmsd) in purple (negative)  
and green (positive)





## 6.5 Other polymers [i](#)

There are no such residues in this entry.