



# Full wwPDB X-ray Structure Validation Report ⓘ

Jan 9, 2025 – 04:09 PM EST

PDB ID : 9AVF  
Title : CCHFV GP38-GnH-DS heterodimer  
Authors : McFadden, E.; Ramamohan, A.R.; McLellan, J.S.  
Deposited on : 2024-03-01  
Resolution : 2.50 Å(reported)

This is a Full wwPDB X-ray Structure Validation Report for a publicly released PDB entry.

We welcome your comments at [validation@mail.wwpdb.org](mailto:validation@mail.wwpdb.org)

A user guide is available at

<https://www.wwpdb.org/validation/2017/XrayValidationReportHelp>

with specific help available everywhere you see the ⓘ symbol.

The types of validation reports are described at

<http://www.wwpdb.org/validation/2017/FAQs#types>.

---

The following versions of software and data (see [references ⓘ](#)) were used in the production of this report:

MolProbity : 4.02b-467  
Mogul : 2022.3.0, CSD as543be (2022)  
Xtriage (Phenix) : 1.21  
EDS : 3.0  
Percentile statistics : 20231227.v01 (using entries in the PDB archive December 27th 2023)  
CCP4 : 9.0.004 (Gargrove)  
Density-Fitness : 1.0.11  
Ideal geometry (proteins) : Engh & Huber (2001)  
Ideal geometry (DNA, RNA) : Parkinson et al. (1996)  
Validation Pipeline (wwPDB-VP) : 2.40

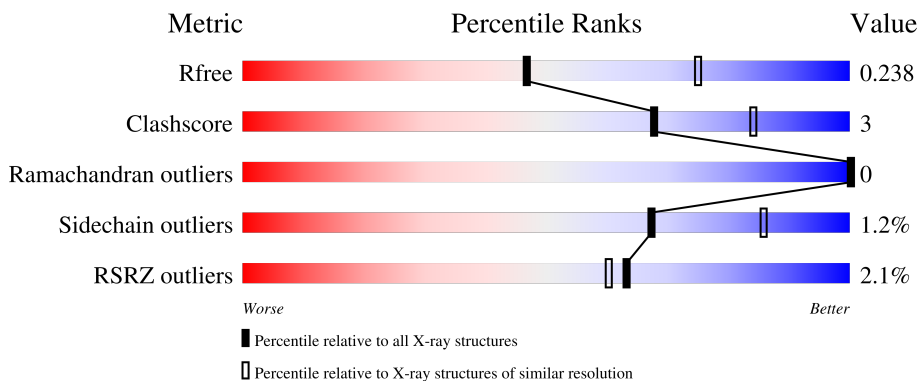
# 1 Overall quality at a glance

The following experimental techniques were used to determine the structure:

*X-RAY DIFFRACTION*

The reported resolution of this entry is 2.50 Å.

Percentile scores (ranging between 0-100) for global validation metrics of the entry are shown in the following graphic. The table shows the number of entries on which the scores are based.



Metric	Whole archive (#Entries)	Similar resolution (#Entries, resolution range(Å))
$R_{free}$	164625	5504 (2.50-2.50)
Clashscore	180529	6282 (2.50-2.50)
Ramachandran outliers	177936	6191 (2.50-2.50)
Sidechain outliers	177891	6193 (2.50-2.50)
RSRZ outliers	164620	5504 (2.50-2.50)

The table below summarises the geometric issues observed across the polymeric chains and their fit to the electron density. The red, orange, yellow and green segments of the lower bar indicate the fraction of residues that contain outliers for  $\geq 3$ , 2, 1 and 0 types of geometric quality criteria respectively. A grey segment represents the fraction of residues that are not modelled. The numeric value for each fraction is indicated below the corresponding segment, with a dot representing fractions  $\leq 5\%$ . The upper red bar (where present) indicates the fraction of residues that have poor fit to the electron density. The numeric value is given above the bar.

Mol	Chain	Length	Quality of chain
1	A	269	
1	C	269	
2	B	60	
2	D	60	

## 2 Entry composition [i](#)

There are 5 unique types of molecules in this entry. The entry contains 4690 atoms, of which 0 are hydrogens and 0 are deuteriums.

In the tables below, the ZeroOcc column contains the number of atoms modelled with zero occupancy, the AltConf column contains the number of residues with at least one atom in alternate conformation and the Trace column contains the number of residues modelled with at most 2 atoms.

- Molecule 1 is a protein called GP38.

Mol	Chain	Residues	Atoms					ZeroOcc	AltConf	Trace
			Total	C	N	O	S			
1	A	252	Total	C	N	O	S	0	0	0
			2000	1277	345	369	9			
1	C	239	Total	C	N	O	S	0	0	0
			1922	1231	332	350	9			

There are 16 discrepancies between the modelled and reference sequences:

Chain	Residue	Modelled	Actual	Comment	Reference
A	496	CYS	GLN	engineered mutation	UNP Q8JSZ3
A	510	GLY	-	expression tag	UNP Q8JSZ3
A	511	GLY	-	expression tag	UNP Q8JSZ3
A	512	SER	-	expression tag	UNP Q8JSZ3
A	513	GLY	-	expression tag	UNP Q8JSZ3
A	514	GLY	-	expression tag	UNP Q8JSZ3
A	515	GLY	-	expression tag	UNP Q8JSZ3
A	516	SER	-	expression tag	UNP Q8JSZ3
C	496	CYS	GLN	engineered mutation	UNP Q8JSZ3
C	510	GLY	-	expression tag	UNP Q8JSZ3
C	511	GLY	-	expression tag	UNP Q8JSZ3
C	512	SER	-	expression tag	UNP Q8JSZ3
C	513	GLY	-	expression tag	UNP Q8JSZ3
C	514	GLY	-	expression tag	UNP Q8JSZ3
C	515	GLY	-	expression tag	UNP Q8JSZ3
C	516	SER	-	expression tag	UNP Q8JSZ3

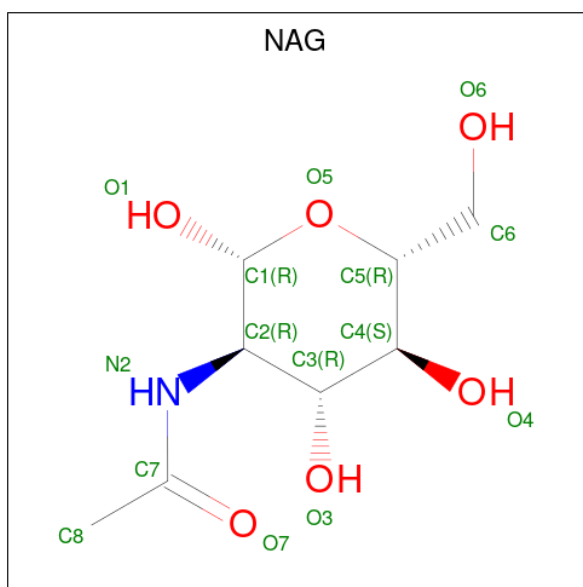
- Molecule 2 is a protein called Glycoprotein N.

Mol	Chain	Residues	Atoms					ZeroOcc	AltConf	Trace
			Total	C	N	O	S			
2	B	33	Total	C	N	O	S	0	0	0
			252	155	47	47	3			
2	D	41	Total	C	N	O	S	0	0	0
			313	195	55	60	3			

There are 20 discrepancies between the modelled and reference sequences:

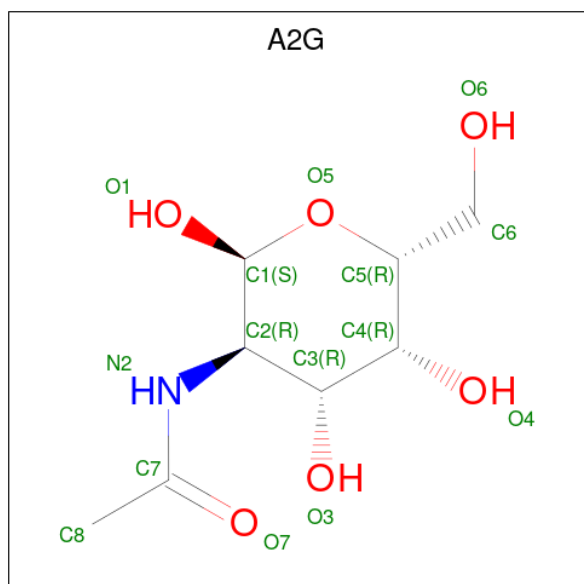
Chain	Residue	Modelled	Actual	Comment	Reference
B	562	CYS	VAL	engineered mutation	UNP Q8JSZ3
B	584	GLY	-	expression tag	UNP Q8JSZ3
B	585	SER	-	expression tag	UNP Q8JSZ3
B	586	LEU	-	expression tag	UNP Q8JSZ3
B	587	GLU	-	expression tag	UNP Q8JSZ3
B	588	VAL	-	expression tag	UNP Q8JSZ3
B	589	LEU	-	expression tag	UNP Q8JSZ3
B	590	PHE	-	expression tag	UNP Q8JSZ3
B	591	GLN	-	expression tag	UNP Q8JSZ3
B	592	GLY	-	expression tag	UNP Q8JSZ3
D	562	CYS	VAL	engineered mutation	UNP Q8JSZ3
D	584	GLY	-	expression tag	UNP Q8JSZ3
D	585	SER	-	expression tag	UNP Q8JSZ3
D	586	LEU	-	expression tag	UNP Q8JSZ3
D	587	GLU	-	expression tag	UNP Q8JSZ3
D	588	VAL	-	expression tag	UNP Q8JSZ3
D	589	LEU	-	expression tag	UNP Q8JSZ3
D	590	PHE	-	expression tag	UNP Q8JSZ3
D	591	GLN	-	expression tag	UNP Q8JSZ3
D	592	GLY	-	expression tag	UNP Q8JSZ3

- Molecule 3 is 2-acetamido-2-deoxy-beta-D-glucopyranose (three-letter code: NAG) (formula:  $C_8H_{15}NO_6$ ).



Mol	Chain	Residues	Atoms				ZeroOcc	AltConf
3	A	1	Total	C	N	O	0	0
			14	8	1	5		
3	A	1	Total	C	N	O	0	0
			14	8	1	5		
3	B	1	Total	C	N	O	0	0
			14	8	1	5		
3	C	1	Total	C	N	O	0	0
			14	8	1	5		
3	C	1	Total	C	N	O	0	0
			14	8	1	5		
3	D	1	Total	C	N	O	0	0
			14	8	1	5		

- Molecule 4 is 2-acetamido-2-deoxy-alpha-D-galactopyranose (three-letter code: A2G) (formula: C<sub>8</sub>H<sub>15</sub>NO<sub>6</sub>).



Mol	Chain	Residues	Atoms				ZeroOcc	AltConf
4	A	1	Total	C	N	O	0	0
			14	8	1	5		

- Molecule 5 is water.

Mol	Chain	Residues	Atoms		ZeroOcc	AltConf
5	A	63	Total	O	0	0
			63	63		
5	B	5	Total	O	0	0
			5	5		

*Continued on next page...*

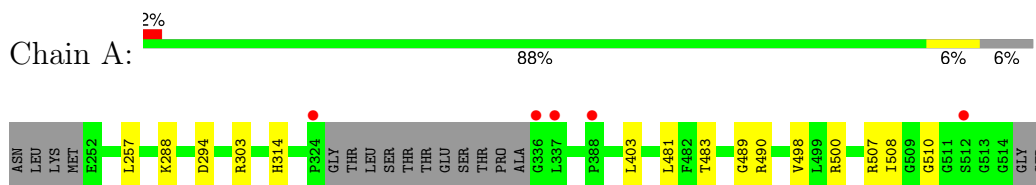
*Continued from previous page...*

<b>Mol</b>	<b>Chain</b>	<b>Residues</b>	<b>Atoms</b>		<b>ZeroOcc</b>	<b>AltConf</b>
5	C	35	Total 35	O 35	0	0
5	D	2	Total 2	O 2	0	0

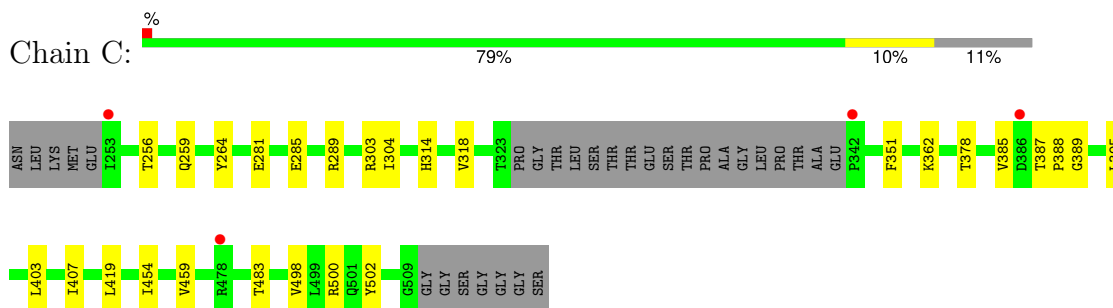
### 3 Residue-property plots [i](#)

These plots are drawn for all protein, RNA, DNA and oligosaccharide chains in the entry. The first graphic for a chain summarises the proportions of the various outlier classes displayed in the second graphic. The second graphic shows the sequence view annotated by issues in geometry and electron density. Residues are color-coded according to the number of geometric quality criteria for which they contain at least one outlier: green = 0, yellow = 1, orange = 2 and red = 3 or more. A red dot above a residue indicates a poor fit to the electron density ( $RSRZ > 2$ ). Stretches of 2 or more consecutive residues without any outlier are shown as a green connector. Residues present in the sample, but not in the model, are shown in grey.

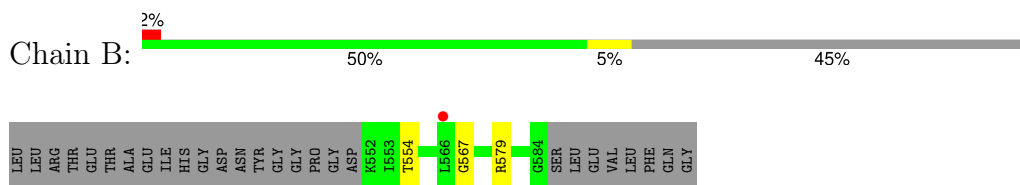
- Molecule 1: GP38



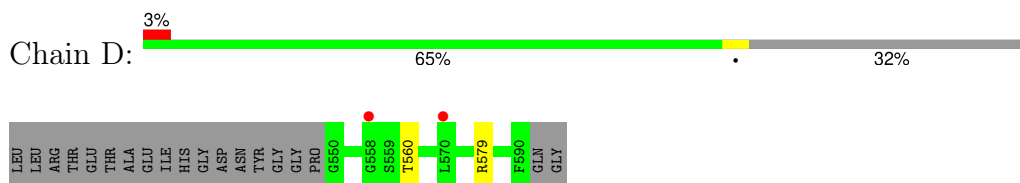
- Molecule 1: GP38



- Molecule 2: Glycoprotein N



- Molecule 2: Glycoprotein N



## 4 Data and refinement statistics

Property	Value	Source
Space group	P 21 21 21	Depositor
Cell constants a, b, c, $\alpha$ , $\beta$ , $\gamma$	63.81Å 87.01Å 128.76Å 90.00° 90.00° 90.00°	Depositor
Resolution (Å)	51.75 – 2.50 51.75 – 2.50	Depositor EDS
% Data completeness (in resolution range)	99.6 (51.75-2.50) 99.6 (51.75-2.50)	Depositor EDS
$R_{merge}$	(Not available)	Depositor
$R_{sym}$	0.11	Depositor
$\langle I/\sigma(I) \rangle$ <sup>1</sup>	1.54 (at 2.51Å)	Xtrriage
Refinement program	PHENIX 1.21rc1_5127	Depositor
R, $R_{free}$	0.197 , 0.237 0.199 , 0.238	Depositor DCC
$R_{free}$ test set	1276 reflections (5.02%)	wwPDB-VP
Wilson B-factor (Å <sup>2</sup> )	51.3	Xtrriage
Anisotropy	0.133	Xtrriage
Bulk solvent $k_{sol}$ (e/Å <sup>3</sup> ), $B_{sol}$ (Å <sup>2</sup> )	0.35 , 58.3	EDS
L-test for twinning <sup>2</sup>	$\langle  L  \rangle = 0.48$ , $\langle L^2 \rangle = 0.31$	Xtrriage
Estimated twinning fraction	No twinning to report.	Xtrriage
$F_o, F_c$ correlation	0.95	EDS
Total number of atoms	4690	wwPDB-VP
Average B, all atoms (Å <sup>2</sup> )	66.0	wwPDB-VP

Xtrriage's analysis on translational NCS is as follows: *The largest off-origin peak in the Patterson function is 4.42% of the height of the origin peak. No significant pseudotranslation is detected.*

<sup>1</sup>Intensities estimated from amplitudes.

<sup>2</sup>Theoretical values of  $\langle |L| \rangle$ ,  $\langle L^2 \rangle$  for acentric reflections are 0.5, 0.333 respectively for untwinned datasets, and 0.375, 0.2 for perfectly twinned datasets.



## 5 Model quality [i](#)

### 5.1 Standard geometry [i](#)

Bond lengths and bond angles in the following residue types are not validated in this section: A2G, NAG

The Z score for a bond length (or angle) is the number of standard deviations the observed value is removed from the expected value. A bond length (or angle) with  $|Z| > 5$  is considered an outlier worth inspection. RMSZ is the root-mean-square of all Z scores of the bond lengths (or angles).

Mol	Chain	Bond lengths		Bond angles	
		RMSZ	# Z  >5	RMSZ	# Z  >5
1	A	0.29	0/2037	0.58	0/2746
1	C	0.28	0/1957	0.58	0/2636
2	B	0.28	0/253	0.67	0/337
2	D	0.30	0/315	0.63	0/421
All	All	0.28	0/4562	0.59	0/6140

There are no bond length outliers.

There are no bond angle outliers.

There are no chirality outliers.

There are no planarity outliers.

### 5.2 Too-close contacts [i](#)

In the following table, the Non-H and H(model) columns list the number of non-hydrogen atoms and hydrogen atoms in the chain respectively. The H(added) column lists the number of hydrogen atoms added and optimized by MolProbity. The Clashes column lists the number of clashes within the asymmetric unit, whereas Symm-Clashes lists symmetry-related clashes.

Mol	Chain	Non-H	H(model)	H(added)	Clashes	Symm-Clashes
1	A	2000	0	2020	10	0
1	C	1922	0	1953	19	0
2	B	252	0	257	2	0
2	D	313	0	315	1	0
3	A	28	0	26	0	0
3	B	14	0	13	0	0
3	C	28	0	26	0	0
3	D	14	0	13	0	0
4	A	14	0	12	1	0

*Continued on next page...*

*Continued from previous page...*

Mol	Chain	Non-H	H(model)	H(added)	Clashes	Symm-Clashes
5	A	63	0	0	2	2
5	B	5	0	0	0	0
5	C	35	0	0	2	0
5	D	2	0	0	0	0
All	All	4690	0	4635	32	2

The all-atom clashscore is defined as the number of clashes found per 1000 atoms (including hydrogen atoms). The all-atom clashscore for this structure is 3.

All (32) close contacts within the same asymmetric unit are listed below, sorted by their clash magnitude.

Atom-1	Atom-2	Interatomic distance (Å)	Clash overlap (Å)
1:C:285:GLU:HG3	1:C:289:ARG:HH21	1.17	1.10
1:C:419:LEU:O	5:C:701:HOH:O	1.98	0.81
1:C:285:GLU:HG3	1:C:289:ARG:NH2	1.98	0.76
1:C:281:GLU:OE2	5:C:702:HOH:O	2.05	0.73
1:A:489:GLY:HA3	1:A:500:ARG:NH1	2.05	0.72
1:A:490:ARG:H	1:A:500:ARG:HH12	1.43	0.67
1:A:403:LEU:O	5:A:701:HOH:O	2.13	0.66
1:A:489:GLY:HA3	1:A:500:ARG:HH11	1.62	0.65
1:C:498:VAL:HA	2:D:560:THR:HG22	1.82	0.61
1:A:498:VAL:HG13	1:A:500:ARG:NH1	2.18	0.59
4:A:603:A2G:O3	5:A:702:HOH:O	2.17	0.59
1:A:403:LEU:HD11	1:A:483:THR:HG21	1.85	0.58
1:C:264:TYR:CZ	1:C:318:VAL:HG13	2.41	0.56
1:C:385:VAL:HG23	1:C:500:ARG:HE	1.69	0.56
1:A:490:ARG:H	1:A:500:ARG:NH1	2.03	0.56
1:C:395:LEU:HG	1:C:407:ILE:HD11	1.89	0.53
2:B:554:THR:HG21	2:B:567:GLY:HA2	1.94	0.50
1:C:351:PHE:CE2	1:C:362:LYS:HE3	2.47	0.49
1:C:256:THR:HG23	1:C:259:GLN:H	1.78	0.48
1:A:288:LYS:NZ	1:A:294:ASP:OD1	2.36	0.48
1:A:481:LEU:HG	1:A:508:ILE:CD1	2.45	0.47
1:C:378:THR:HG23	1:C:459:VAL:H	1.80	0.46
1:C:304:ILE:HG22	1:C:454:ILE:HG23	1.98	0.45
2:B:579:ARG:CZ	2:B:579:ARG:HB2	2.47	0.44
1:C:385:VAL:CG2	1:C:500:ARG:HE	2.31	0.44
1:A:507:ARG:NH2	1:A:510:GLY:HA3	2.33	0.42
1:C:351:PHE:CD1	1:C:362:LYS:HG3	2.55	0.42
1:C:387:THR:OG1	1:C:500:ARG:HD2	2.20	0.41
1:C:387:THR:HG23	1:C:388:PRO:HD2	2.01	0.41

*Continued on next page...*

Continued from previous page...

Atom-1	Atom-2	Interatomic distance (Å)	Clash overlap (Å)
1:C:389:GLY:HA3	1:C:502:TYR:CG	2.55	0.41
1:C:403:LEU:HD11	1:C:483:THR:HG21	2.02	0.41
1:C:385:VAL:HG23	1:C:500:ARG:NE	2.34	0.41

All (2) symmetry-related close contacts are listed below. The label for Atom-2 includes the symmetry operator and encoded unit-cell translations to be applied.

Atom-1	Atom-2	Interatomic distance (Å)	Clash overlap (Å)
5:A:761:HOH:O	5:A:763:HOH:O[3_555]	2.04	0.16
5:A:759:HOH:O	5:A:761:HOH:O[3_545]	2.05	0.15

### 5.3 Torsion angles [i](#)

#### 5.3.1 Protein backbone [i](#)

In the following table, the Percentiles column shows the percent Ramachandran outliers of the chain as a percentile score with respect to all X-ray entries followed by that with respect to entries of similar resolution.

The Analysed column shows the number of residues for which the backbone conformation was analysed, and the total number of residues.

Mol	Chain	Analysed	Favoured	Allowed	Outliers	Percentiles	
1	A	248/269 (92%)	244 (98%)	4 (2%)	0	100	100
1	C	235/269 (87%)	233 (99%)	2 (1%)	0	100	100
2	B	31/60 (52%)	30 (97%)	1 (3%)	0	100	100
2	D	39/60 (65%)	38 (97%)	1 (3%)	0	100	100
All	All	553/658 (84%)	545 (99%)	8 (1%)	0	100	100

There are no Ramachandran outliers to report.

#### 5.3.2 Protein sidechains [i](#)

In the following table, the Percentiles column shows the percent sidechain outliers of the chain as a percentile score with respect to all X-ray entries followed by that with respect to entries of similar resolution.

The Analysed column shows the number of residues for which the sidechain conformation was analysed, and the total number of residues.

Mol	Chain	Analysed	Rotameric	Outliers	Percentiles	
1	A	224/238 (94%)	221 (99%)	3 (1%)	65	85
1	C	217/238 (91%)	215 (99%)	2 (1%)	75	90
2	B	29/50 (58%)	29 (100%)	0	100	100
2	D	36/50 (72%)	35 (97%)	1 (3%)	38	65
All	All	506/576 (88%)	500 (99%)	6 (1%)	67	86

All (6) residues with a non-rotameric sidechain are listed below:

Mol	Chain	Res	Type
1	A	257	LEU
1	A	303	ARG
1	A	314	HIS
1	C	303	ARG
1	C	314	HIS
2	D	579	ARG

Sometimes sidechains can be flipped to improve hydrogen bonding and reduce clashes. There are no such sidechains identified.

### 5.3.3 RNA [i](#)

There are no RNA molecules in this entry.

## 5.4 Non-standard residues in protein, DNA, RNA chains [i](#)

There are no non-standard protein/DNA/RNA residues in this entry.

## 5.5 Carbohydrates [i](#)

There are no oligosaccharides in this entry.

## 5.6 Ligand geometry [i](#)

7 ligands are modelled in this entry.

In the following table, the Counts columns list the number of bonds (or angles) for which Mogul statistics could be retrieved, the number of bonds (or angles) that are observed in the model and the number of bonds (or angles) that are defined in the Chemical Component Dictionary. The Link column lists molecule types, if any, to which the group is linked. The Z score for a bond

length (or angle) is the number of standard deviations the observed value is removed from the expected value. A bond length (or angle) with  $|Z| > 2$  is considered an outlier worth inspection. RMSZ is the root-mean-square of all Z scores of the bond lengths (or angles).

Mol	Type	Chain	Res	Link	Bond lengths			Bond angles		
					Counts	RMSZ	# Z  > 2	Counts	RMSZ	# Z  > 2
3	NAG	A	602	1	14,14,15	0.72	0	17,19,21	0.83	0
3	NAG	D	601	2	14,14,15	0.71	0	17,19,21	1.09	1 (5%)
3	NAG	B	601	2	14,14,15	0.74	0	17,19,21	1.11	1 (5%)
3	NAG	C	601	1	14,14,15	0.68	0	17,19,21	1.05	1 (5%)
4	A2G	A	603	1	14,14,15	0.95	1 (7%)	17,19,21	1.09	1 (5%)
3	NAG	A	601	1	14,14,15	0.74	0	17,19,21	1.01	1 (5%)
3	NAG	C	602	1	14,14,15	0.72	0	17,19,21	1.05	0

In the following table, the Chirals column lists the number of chiral outliers, the number of chiral centers analysed, the number of these observed in the model and the number defined in the Chemical Component Dictionary. Similar counts are reported in the Torsion and Rings columns. '-' means no outliers of that kind were identified.

Mol	Type	Chain	Res	Link	Chirals	Torsions	Rings
3	NAG	A	602	1	-	2/6/23/26	0/1/1/1
3	NAG	D	601	2	-	0/6/23/26	0/1/1/1
3	NAG	B	601	2	-	0/6/23/26	0/1/1/1
3	NAG	C	601	1	-	0/6/23/26	0/1/1/1
4	A2G	A	603	1	-	2/6/23/26	0/1/1/1
3	NAG	A	601	1	-	0/6/23/26	0/1/1/1
3	NAG	C	602	1	-	1/6/23/26	0/1/1/1

All (1) bond length outliers are listed below:

Mol	Chain	Res	Type	Atoms	Z	Observed(Å)	Ideal(Å)
4	A	603	A2G	O5-C1	-2.65	1.39	1.43

All (5) bond angle outliers are listed below:

Mol	Chain	Res	Type	Atoms	Z	Observed(°)	Ideal(°)
4	A	603	A2G	C1-O5-C5	3.17	116.43	112.19
3	B	601	NAG	C1-O5-C5	3.07	116.31	112.19
3	D	601	NAG	C1-O5-C5	2.90	116.07	112.19
3	A	601	NAG	C1-O5-C5	2.58	115.65	112.19
3	C	601	NAG	C1-O5-C5	2.54	115.59	112.19

There are no chirality outliers.

All (5) torsion outliers are listed below:

Mol	Chain	Res	Type	Atoms
4	A	603	A2G	O5-C5-C6-O6
4	A	603	A2G	C4-C5-C6-O6
3	A	602	NAG	C4-C5-C6-O6
3	A	602	NAG	O5-C5-C6-O6
3	C	602	NAG	O5-C5-C6-O6

There are no ring outliers.

1 monomer is involved in 1 short contact:

Mol	Chain	Res	Type	Clashes	Symm-Clashes
4	A	603	A2G	1	0

## 5.7 Other polymers [i](#)

There are no such residues in this entry.

## 5.8 Polymer linkage issues [i](#)

There are no chain breaks in this entry.

## 6 Fit of model and data [i](#)

### 6.1 Protein, DNA and RNA chains [i](#)

In the following table, the column labelled ‘#RSRZ > 2’ contains the number (and percentage) of RSRZ outliers, followed by percent RSRZ outliers for the chain as percentile scores relative to all X-ray entries and entries of similar resolution. The OWAB column contains the minimum, median, 95<sup>th</sup> percentile and maximum values of the occupancy-weighted average B-factor per residue. The column labelled ‘Q < 0.9’ lists the number of (and percentage) of residues with an average occupancy less than 0.9.

Mol	Chain	Analysed	<RSRZ>	#RSRZ>2	OWAB(Å <sup>2</sup> )	Q<0.9
1	A	252/269 (93%)	-0.13	5 (1%) 64 62	35, 55, 94, 119	0
1	C	239/269 (88%)	0.07	4 (1%) 69 65	36, 63, 107, 130	0
2	B	33/60 (55%)	0.29	1 (3%) 52 49	47, 66, 144, 159	0
2	D	41/60 (68%)	0.75	2 (4%) 36 33	48, 87, 115, 119	0
All	All	565/658 (85%)	0.04	12 (2%) 63 60	35, 61, 108, 159	0

All (12) RSRZ outliers are listed below:

Mol	Chain	Res	Type	RSRZ
2	B	566	LEU	4.0
2	D	570	LEU	3.5
1	A	337	LEU	3.0
1	A	324	PRO	2.9
1	A	512	SER	2.8
2	D	558	GLY	2.5
1	C	342	PRO	2.4
1	A	336	GLY	2.2
1	C	478	ARG	2.2
1	C	386	ASP	2.2
1	C	253	ILE	2.1
1	A	388	PRO	2.0

### 6.2 Non-standard residues in protein, DNA, RNA chains [i](#)

There are no non-standard protein/DNA/RNA residues in this entry.

### 6.3 Carbohydrates [i](#)

There are no monosaccharides in this entry.

## 6.4 Ligands [i](#)

In the following table, the Atoms column lists the number of modelled atoms in the group and the number defined in the chemical component dictionary. The B-factors column lists the minimum, median, 95<sup>th</sup> percentile and maximum values of B factors of atoms in the group. The column labelled 'Q< 0.9' lists the number of atoms with occupancy less than 0.9.

Mol	Type	Chain	Res	Atoms	RSCC	RSR	B-factors(Å <sup>2</sup> )	Q<0.9
3	NAG	D	601	14/15	0.65	0.17	75,116,130,131	0
3	NAG	B	601	14/15	0.83	0.13	77,84,93,94	0
3	NAG	C	602	14/15	0.86	0.10	69,84,94,97	0
4	A2G	A	603	14/15	0.88	0.10	78,89,93,94	0
3	NAG	C	601	14/15	0.90	0.10	64,70,79,82	0
3	NAG	A	602	14/15	0.93	0.07	47,61,68,70	0
3	NAG	A	601	14/15	0.95	0.06	42,53,63,66	0

## 6.5 Other polymers [i](#)

There are no such residues in this entry.