



Full wwPDB X-ray Structure Validation Report ⓘ

Sep 26, 2023 – 02:53 AM EDT

PDB ID : 6B2M
Title : LarE, a sulfur transferase involved in synthesis of the cofactor for lactate racemase in complex with coenzyme A
Authors : Fellner, M.; Hausinger, R.P.; Hu, J.
Deposited on : 2017-09-20
Resolution : 2.09 Å(reported)

This is a Full wwPDB X-ray Structure Validation Report for a publicly released PDB entry.

We welcome your comments at validation@mail.wwpdb.org

A user guide is available at

<https://www.wwpdb.org/validation/2017/XrayValidationReportHelp>

with specific help available everywhere you see the ⓘ symbol.

The types of validation reports are described at

<http://www.wwpdb.org/validation/2017/FAQs#types>.

The following versions of software and data (see [references ⓘ](#)) were used in the production of this report:

MolProbity : 4.02b-467
Mogul : 1.8.5 (274361), CSD as541be (2020)
Xtriage (Phenix) : 1.13
EDS : 2.35.1
buster-report : 1.1.7 (2018)
Percentile statistics : 20191225.v01 (using entries in the PDB archive December 25th 2019)
Refmac : 5.8.0158
CCP4 : 7.0.044 (Gargrove)
Ideal geometry (proteins) : Engh & Huber (2001)
Ideal geometry (DNA, RNA) : Parkinson et al. (1996)
Validation Pipeline (wwPDB-VP) : 2.35.1

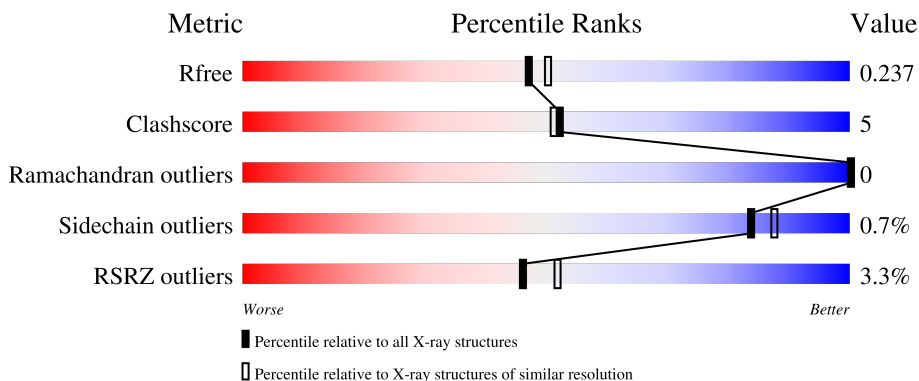
1 Overall quality at a glance i

The following experimental techniques were used to determine the structure:

X-RAY DIFFRACTION

The reported resolution of this entry is 2.09 Å.

Percentile scores (ranging between 0-100) for global validation metrics of the entry are shown in the following graphic. The table shows the number of entries on which the scores are based.



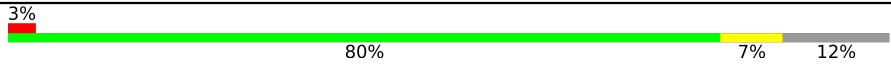
Metric	Whole archive (#Entries)	Similar resolution (#Entries, resolution range(Å))
R_{free}	130704	6189 (2.10-2.06)
Clashscore	141614	6738 (2.10-2.06)
Ramachandran outliers	138981	6663 (2.10-2.06)
Sidechain outliers	138945	6664 (2.10-2.06)
RSRZ outliers	127900	6057 (2.10-2.06)

The table below summarises the geometric issues observed across the polymeric chains and their fit to the electron density. The red, orange, yellow and green segments of the lower bar indicate the fraction of residues that contain outliers for ≥ 3 , 2, 1 and 0 types of geometric quality criteria respectively. A grey segment represents the fraction of residues that are not modelled. The numeric value for each fraction is indicated below the corresponding segment, with a dot representing fractions $\leq 5\%$. The upper red bar (where present) indicates the fraction of residues that have poor fit to the electron density. The numeric value is given above the bar.

Mol	Chain	Length	Quality of chain
1	A	286	<div style="display: flex; align-items: center;"> <div style="width: 2%; height: 10px; background-color: red; margin-right: 5px;"></div> <div style="width: 83%; height: 10px; background-color: green; margin-right: 5px;"></div> <div style="width: 11%; height: 10px; background-color: yellow; margin-right: 5px;"></div> <div style="width: 6%; height: 10px; background-color: grey;"></div> </div>
1	B	286	<div style="display: flex; align-items: center;"> <div style="width: 76%; height: 10px; background-color: green; margin-right: 5px;"></div> <div style="width: 10%; height: 10px; background-color: yellow; margin-right: 5px;"></div> <div style="width: 14%; height: 10px; background-color: grey;"></div> </div>
1	C	286	<div style="display: flex; align-items: center;"> <div style="width: 3%; height: 10px; background-color: red; margin-right: 5px;"></div> <div style="width: 81%; height: 10px; background-color: green; margin-right: 5px;"></div> <div style="width: 8%; height: 10px; background-color: yellow; margin-right: 5px;"></div> <div style="width: 11%; height: 10px; background-color: grey;"></div> </div>
1	D	286	<div style="display: flex; align-items: center;"> <div style="width: 6%; height: 10px; background-color: red; margin-right: 5px;"></div> <div style="width: 74%; height: 10px; background-color: green; margin-right: 5px;"></div> <div style="width: 9%; height: 10px; background-color: yellow; margin-right: 5px;"></div> <div style="width: 16%; height: 10px; background-color: grey;"></div> </div>
1	E	286	<div style="display: flex; align-items: center;"> <div style="width: 3%; height: 10px; background-color: red; margin-right: 5px;"></div> <div style="width: 81%; height: 10px; background-color: green; margin-right: 5px;"></div> <div style="width: 10%; height: 10px; background-color: yellow; margin-right: 5px;"></div> <div style="width: 8%; height: 10px; background-color: grey;"></div> </div>

Continued on next page...

Continued from previous page...

Mol	Chain	Length	Quality of chain
1	F	286	 <p>A horizontal bar chart representing the quality of the chain. The bar is divided into four segments: a small red segment at the beginning labeled '3%', a large green segment labeled '80%', a small yellow segment labeled '7%', and a grey segment at the end labeled '12%'.</p>

2 Entry composition i

There are 4 unique types of molecules in this entry. The entry contains 12554 atoms, of which 0 are hydrogens and 0 are deuteriums.

In the tables below, the ZeroOcc column contains the number of atoms modelled with zero occupancy, the AltConf column contains the number of residues with at least one atom in alternate conformation and the Trace column contains the number of residues modelled with at most 2 atoms.

- Molecule 1 is a protein called ATP-utilizing enzyme of the PP-loopsuperfamily.

Mol	Chain	Residues	Atoms					ZeroOcc	AltConf	Trace
			Total	C	N	O	S			
1	A	268	Total 2028	C 1278	N 353	O 390	S 7	0	0	0
1	B	247	Total 1893	C 1193	N 326	O 368	S 6	0	0	0
1	C	255	Total 1963	C 1233	N 346	O 376	S 8	0	2	0
1	D	240	Total 1807	C 1145	N 308	O 347	S 7	0	1	0
1	E	263	Total 2003	C 1265	N 345	O 386	S 7	0	0	0
1	F	252	Total 1937	C 1221	N 337	O 372	S 7	0	1	0

There are 60 discrepancies between the modelled and reference sequences:

Chain	Residue	Modelled	Actual	Comment	Reference
A	277	ALA	-	expression tag	UNP A0A0G9FES3
A	278	SER	-	expression tag	UNP A0A0G9FES3
A	279	TRP	-	expression tag	UNP A0A0G9FES3
A	280	SER	-	expression tag	UNP A0A0G9FES3
A	281	HIS	-	expression tag	UNP A0A0G9FES3
A	282	PRO	-	expression tag	UNP A0A0G9FES3
A	283	GLN	-	expression tag	UNP A0A0G9FES3
A	284	PHE	-	expression tag	UNP A0A0G9FES3
A	285	GLU	-	expression tag	UNP A0A0G9FES3
A	286	LYS	-	expression tag	UNP A0A0G9FES3
B	277	ALA	-	expression tag	UNP A0A0G9FES3
B	278	SER	-	expression tag	UNP A0A0G9FES3
B	279	TRP	-	expression tag	UNP A0A0G9FES3
B	280	SER	-	expression tag	UNP A0A0G9FES3
B	281	HIS	-	expression tag	UNP A0A0G9FES3
B	282	PRO	-	expression tag	UNP A0A0G9FES3
B	283	GLN	-	expression tag	UNP A0A0G9FES3

Continued on next page...

Continued from previous page...

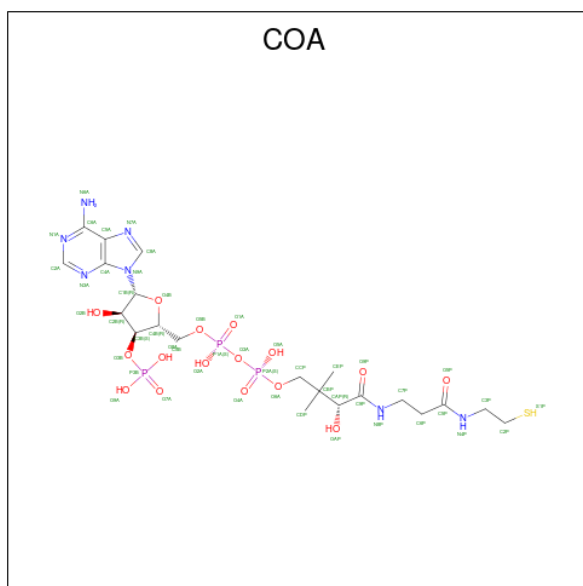
Chain	Residue	Modelled	Actual	Comment	Reference
B	284	PHE	-	expression tag	UNP A0A0G9FES3
B	285	GLU	-	expression tag	UNP A0A0G9FES3
B	286	LYS	-	expression tag	UNP A0A0G9FES3
C	277	ALA	-	expression tag	UNP A0A0G9FES3
C	278	SER	-	expression tag	UNP A0A0G9FES3
C	279	TRP	-	expression tag	UNP A0A0G9FES3
C	280	SER	-	expression tag	UNP A0A0G9FES3
C	281	HIS	-	expression tag	UNP A0A0G9FES3
C	282	PRO	-	expression tag	UNP A0A0G9FES3
C	283	GLN	-	expression tag	UNP A0A0G9FES3
C	284	PHE	-	expression tag	UNP A0A0G9FES3
C	285	GLU	-	expression tag	UNP A0A0G9FES3
C	286	LYS	-	expression tag	UNP A0A0G9FES3
D	277	ALA	-	expression tag	UNP A0A0G9FES3
D	278	SER	-	expression tag	UNP A0A0G9FES3
D	279	TRP	-	expression tag	UNP A0A0G9FES3
D	280	SER	-	expression tag	UNP A0A0G9FES3
D	281	HIS	-	expression tag	UNP A0A0G9FES3
D	282	PRO	-	expression tag	UNP A0A0G9FES3
D	283	GLN	-	expression tag	UNP A0A0G9FES3
D	284	PHE	-	expression tag	UNP A0A0G9FES3
D	285	GLU	-	expression tag	UNP A0A0G9FES3
D	286	LYS	-	expression tag	UNP A0A0G9FES3
E	277	ALA	-	expression tag	UNP A0A0G9FES3
E	278	SER	-	expression tag	UNP A0A0G9FES3
E	279	TRP	-	expression tag	UNP A0A0G9FES3
E	280	SER	-	expression tag	UNP A0A0G9FES3
E	281	HIS	-	expression tag	UNP A0A0G9FES3
E	282	PRO	-	expression tag	UNP A0A0G9FES3
E	283	GLN	-	expression tag	UNP A0A0G9FES3
E	284	PHE	-	expression tag	UNP A0A0G9FES3
E	285	GLU	-	expression tag	UNP A0A0G9FES3
E	286	LYS	-	expression tag	UNP A0A0G9FES3
F	277	ALA	-	expression tag	UNP A0A0G9FES3
F	278	SER	-	expression tag	UNP A0A0G9FES3
F	279	TRP	-	expression tag	UNP A0A0G9FES3
F	280	SER	-	expression tag	UNP A0A0G9FES3
F	281	HIS	-	expression tag	UNP A0A0G9FES3
F	282	PRO	-	expression tag	UNP A0A0G9FES3
F	283	GLN	-	expression tag	UNP A0A0G9FES3
F	284	PHE	-	expression tag	UNP A0A0G9FES3
F	285	GLU	-	expression tag	UNP A0A0G9FES3

Continued on next page...

Continued from previous page...

Chain	Residue	Modelled	Actual	Comment	Reference
F	286	LYS	-	expression tag	UNP A0A0G9FES3

- Molecule 2 is COENZYME A (three-letter code: COA) (formula: C₂₁H₃₆N₇O₁₆P₃S).



Mol	Chain	Residues	Atoms					ZeroOcc	AltConf	
			Total	C	N	O	P			S
2	A	1	Total	C	N	O	P	S	0	0
48	21	7	16	3	1					
2	B	1	Total	C	N	O	P	S	0	0
48	21	7	16	3	1					
2	C	1	Total	C	N	O	P	S	0	0
48	21	7	16	3	1					
2	D	1	Total	C	N	O	P	S	0	0
48	21	7	16	3	1					
2	E	1	Total	C	N	O	P	S	0	0
48	21	7	16	3	1					
2	F	1	Total	C	N	O	P	S	0	0
48	21	7	16	3	1					

- Molecule 3 is PHOSPHATE ION (three-letter code: PO4) (formula: O₄P).



Mol	Chain	Residues	Atoms	ZeroOcc	AltConf
3	A	1	Total O P 5 4 1	0	0
3	B	1	Total O P 5 4 1	0	0
3	C	1	Total O P 5 4 1	0	0
3	D	1	Total O P 5 4 1	0	0
3	E	1	Total O P 5 4 1	0	0
3	F	1	Total O P 5 4 1	0	0

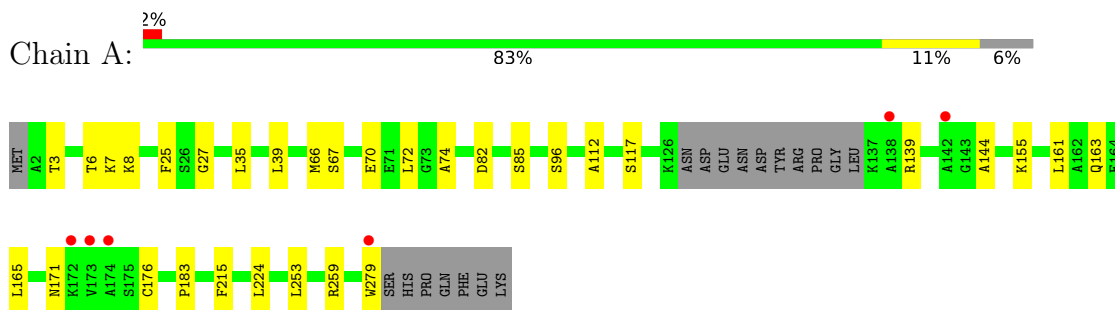
- Molecule 4 is water.

Mol	Chain	Residues	Atoms	ZeroOcc	AltConf
4	A	92	Total O 92 92	0	0
4	B	124	Total O 124 124	0	0
4	C	133	Total O 133 133	0	0
4	D	62	Total O 62 62	0	0
4	E	90	Total O 90 90	0	0
4	F	104	Total O 104 104	0	0

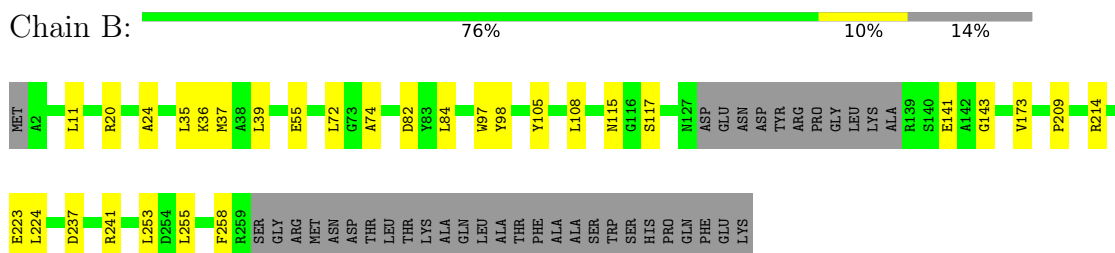
3 Residue-property plots [i](#)

These plots are drawn for all protein, RNA, DNA and oligosaccharide chains in the entry. The first graphic for a chain summarises the proportions of the various outlier classes displayed in the second graphic. The second graphic shows the sequence view annotated by issues in geometry and electron density. Residues are color-coded according to the number of geometric quality criteria for which they contain at least one outlier: green = 0, yellow = 1, orange = 2 and red = 3 or more. A red dot above a residue indicates a poor fit to the electron density ($RSRZ > 2$). Stretches of 2 or more consecutive residues without any outlier are shown as a green connector. Residues present in the sample, but not in the model, are shown in grey.

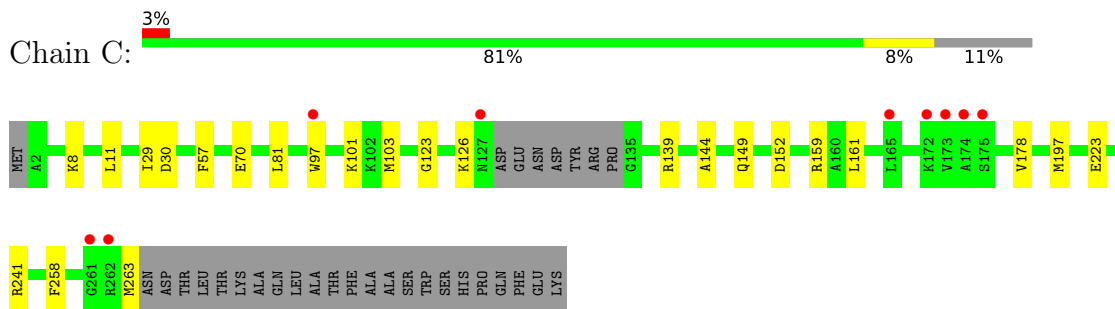
- Molecule 1: ATP-utilizing enzyme of the PP-loopsuperfamily



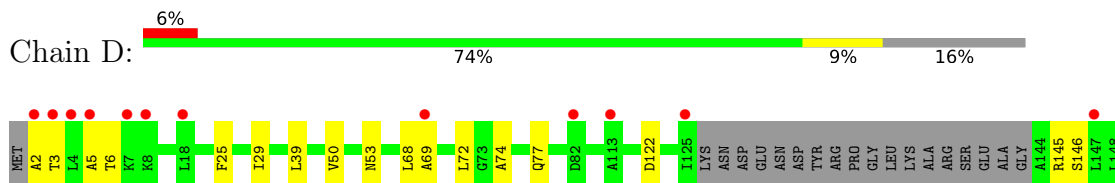
- Molecule 1: ATP-utilizing enzyme of the PP-loopsuperfamily

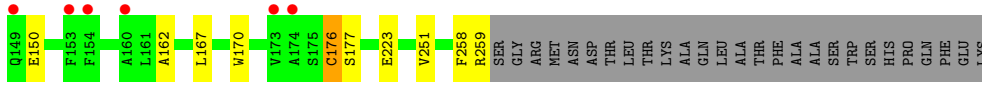


- Molecule 1: ATP-utilizing enzyme of the PP-loopsuperfamily

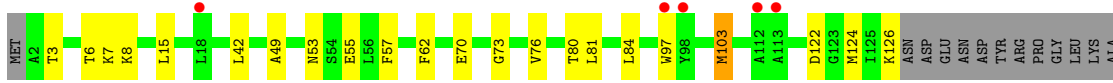
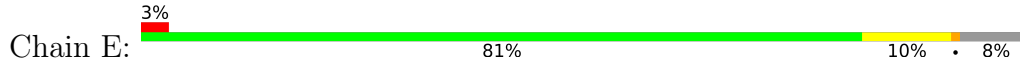


- Molecule 1: ATP-utilizing enzyme of the PP-loopsuperfamily

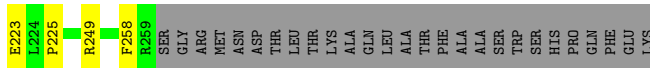
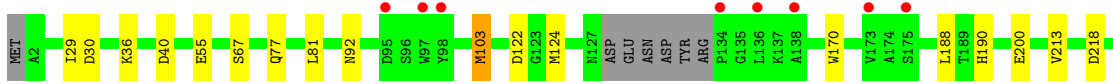
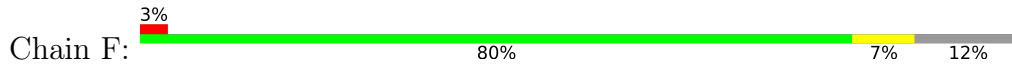




- Molecule 1: ATP-utilizing enzyme of the PP-loopsuperfamily



- Molecule 1: ATP-utilizing enzyme of the PP-loopsuperfamily



4 Data and refinement statistics

Property	Value	Source
Space group	P 41 2 2	Depositor
Cell constants a, b, c, α , β , γ	107.36Å 107.36Å 319.85Å 90.00° 90.00° 90.00°	Depositor
Resolution (Å)	47.75 – 2.09 47.75 – 2.09	Depositor EDS
% Data completeness (in resolution range)	99.6 (47.75-2.09) 99.7 (47.75-2.09)	Depositor EDS
R_{merge}	0.09	Depositor
R_{sym}	(Not available)	Depositor
$\langle I/\sigma(I) \rangle$ ¹	1.62 (at 2.08Å)	Xtrriage
Refinement program	PHENIX	Depositor
R, R_{free}	0.195 , 0.234 0.197 , 0.237	Depositor DCC
R_{free} test set	5543 reflections (4.97%)	wwPDB-VP
Wilson B-factor (Å ²)	33.4	Xtrriage
Anisotropy	0.077	Xtrriage
Bulk solvent k_{sol} (e/Å ³), B_{sol} (Å ²)	0.35 , 54.4	EDS
L-test for twinning ²	$\langle L \rangle = 0.43$, $\langle L^2 \rangle = 0.25$	Xtrriage
Estimated twinning fraction	No twinning to report.	Xtrriage
F_o, F_c correlation	0.95	EDS
Total number of atoms	12554	wwPDB-VP
Average B, all atoms (Å ²)	43.0	wwPDB-VP

Xtrriage's analysis on translational NCS is as follows: *The largest off-origin peak in the Patterson function is 2.56% of the height of the origin peak. No significant pseudotranslation is detected.*

¹Intensities estimated from amplitudes.

²Theoretical values of $\langle |L| \rangle$, $\langle L^2 \rangle$ for acentric reflections are 0.5, 0.333 respectively for untwinned datasets, and 0.375, 0.2 for perfectly twinned datasets.

5 Model quality [i](#)

5.1 Standard geometry [i](#)

Bond lengths and bond angles in the following residue types are not validated in this section: PO4, COA

The Z score for a bond length (or angle) is the number of standard deviations the observed value is removed from the expected value. A bond length (or angle) with $|Z| > 5$ is considered an outlier worth inspection. RMSZ is the root-mean-square of all Z scores of the bond lengths (or angles).

Mol	Chain	Bond lengths		Bond angles	
		RMSZ	# $ Z > 5$	RMSZ	# $ Z > 5$
1	A	0.40	0/2060	0.56	0/2797
1	B	0.42	0/1922	0.62	0/2606
1	C	0.43	0/1992	0.62	1/2696 (0.0%)
1	D	0.36	0/1836	0.56	0/2497
1	E	0.41	0/2035	0.59	1/2761 (0.0%)
1	F	0.41	0/1970	0.60	0/2668
All	All	0.40	0/11815	0.59	2/16025 (0.0%)

There are no bond length outliers.

All (2) bond angle outliers are listed below:

Mol	Chain	Res	Type	Atoms	Z	Observed($^{\circ}$)	Ideal($^{\circ}$)
1	E	165	LEU	CA-CB-CG	5.32	127.53	115.30
1	C	11	LEU	CA-CB-CG	5.08	127.00	115.30

There are no chirality outliers.

There are no planarity outliers.

5.2 Too-close contacts [i](#)

In the following table, the Non-H and H(model) columns list the number of non-hydrogen atoms and hydrogen atoms in the chain respectively. The H(added) column lists the number of hydrogen atoms added and optimized by MolProbity. The Clashes column lists the number of clashes within the asymmetric unit, whereas Symm-Clashes lists symmetry-related clashes.

Mol	Chain	Non-H	H(model)	H(added)	Clashes	Symm-Clashes
1	A	2028	0	1962	21	0
1	B	1893	0	1847	18	0
1	C	1963	0	1924	20	0

Continued on next page...

Continued from previous page...

Mol	Chain	Non-H	H(model)	H(added)	Clashes	Symm-Clashes
1	D	1807	0	1728	22	0
1	E	2003	0	1948	21	0
1	F	1937	0	1908	13	0
2	A	48	0	32	2	0
2	B	48	0	32	1	0
2	C	48	0	32	9	0
2	D	48	0	32	2	0
2	E	48	0	32	5	0
2	F	48	0	32	4	0
3	A	5	0	0	1	0
3	B	5	0	0	0	0
3	C	5	0	0	0	0
3	D	5	0	0	1	0
3	E	5	0	0	0	0
3	F	5	0	0	0	0
4	A	92	0	0	6	0
4	B	124	0	0	0	0
4	C	133	0	0	1	0
4	D	62	0	0	1	0
4	E	90	0	0	1	1
4	F	104	0	0	4	0
All	All	12554	0	11509	128	1

The all-atom clashscore is defined as the number of clashes found per 1000 atoms (including hydrogen atoms). The all-atom clashscore for this structure is 5.

All (128) close contacts within the same asymmetric unit are listed below, sorted by their clash magnitude.

Atom-1	Atom-2	Interatomic distance (Å)	Clash overlap (Å)
2:C:501:COA:H32	2:C:501:COA:H62A	1.33	0.92
2:C:501:COA:H32	2:C:501:COA:N6A	1.89	0.86
2:E:501:COA:H72	2:E:501:COA:H122	1.60	0.83
1:E:55:GLU:HG3	1:E:84:LEU:HG	1.62	0.82
1:E:7:LYS:HE2	1:E:152:ASP:O	1.90	0.71
1:D:162:ALA:HA	1:D:167:LEU:HD12	1.73	0.71
1:E:3:THR:HG23	1:E:6:THR:H	1.57	0.69
2:F:501:COA:H61	2:F:501:COA:H142	1.75	0.69
1:C:178:VAL:HB	1:C:197:MET:HE3	1.75	0.68
2:C:501:COA:H21	2:C:501:COA:H61	1.76	0.68
2:C:501:COA:H62A	2:C:501:COA:C3P	2.05	0.68
1:A:171:ASN:OD1	4:A:601:HOH:O	2.12	0.68

Continued on next page...

Continued from previous page...

Atom-1	Atom-2	Interatomic distance (Å)	Clash overlap (Å)
1:A:139:ARG:HG3	1:A:144:ALA:HB3	1.77	0.66
1:D:68:LEU:O	1:D:72:LEU:HD12	1.96	0.66
1:D:122:ASP:OD1	1:D:146:SER:OG	2.10	0.65
1:C:126:LYS:HG3	1:C:149:GLN:HG3	1.78	0.64
1:C:70:GLU:OE1	4:C:601:HOH:O	2.15	0.64
1:F:223:GLU:HB3	1:F:258:PHE:HA	1.80	0.63
1:C:139:ARG:HG2	1:C:144:ALA:HB3	1.81	0.62
1:D:68:LEU:HD22	1:D:170:TRP:HA	1.81	0.62
1:C:57:PHE:CD1	2:C:501:COA:H22	2.35	0.61
1:C:139:ARG:NH2	1:C:149:GLN:OE1	2.34	0.60
1:F:30:ASP:OD1	4:F:601:HOH:O	2.17	0.60
1:B:35:LEU:HD23	1:B:72:LEU:HD12	1.84	0.59
1:B:20:ARG:NH2	1:B:115:ASN:O	2.32	0.59
1:C:223:GLU:HB3	1:C:258:PHE:HA	1.84	0.59
1:B:20:ARG:HG2	1:B:117:SER:HA	1.85	0.58
1:E:97:TRP:HB2	2:E:501:COA:H32	1.83	0.58
1:B:173:VAL:HG11	1:B:209:PRO:HB2	1.87	0.57
1:A:3:THR:HG23	1:A:6:THR:H	1.70	0.55
1:D:3:THR:HG22	1:D:6:THR:OG1	2.06	0.55
1:A:3:THR:OG1	4:A:603:HOH:O	2.15	0.55
2:C:501:COA:H61	2:C:501:COA:C2P	2.36	0.55
1:F:55:GLU:CD	1:F:190:HIS:HD1	2.10	0.55
2:F:501:COA:H72	2:F:501:COA:H122	1.89	0.54
1:C:97:TRP:HA	1:C:97:TRP:CE3	2.41	0.54
1:D:3:THR:OG1	1:E:73:GLY:HA2	2.07	0.54
1:D:39:LEU:HD11	1:D:74:ALA:HB2	1.90	0.54
1:D:223:GLU:HB3	1:D:258:PHE:HA	1.90	0.54
1:B:11:LEU:HD21	1:B:37:MET:HG3	1.92	0.51
1:E:162:ALA:HA	1:E:167:LEU:HD12	1.91	0.51
2:E:501:COA:H133	2:E:501:COA:C8A	2.40	0.51
1:C:139:ARG:HD3	1:C:144:ALA:O	2.11	0.51
1:B:255:LEU:HD12	1:D:251:VAL:HG12	1.94	0.50
1:A:66:MET:O	1:A:70:GLU:HG3	2.12	0.50
1:B:97:TRP:CG	1:B:98:TYR:N	2.80	0.50
1:D:259:ARG:NH2	3:D:502:PO4:O2	2.46	0.49
1:E:7:LYS:HB3	1:E:153:PHE:CE2	2.47	0.49
1:D:3:THR:HG23	1:D:5:ALA:N	2.27	0.49
2:F:501:COA:H72	2:F:501:COA:CCP	2.43	0.49
1:A:176:CYS:HB3	4:A:684:HOH:O	2.13	0.48
1:F:92:ASN:HB2	1:F:188:LEU:HD11	1.96	0.48
1:F:92:ASN:HB2	1:F:188:LEU:CD1	2.44	0.48

Continued on next page...

Continued from previous page...

Atom-1	Atom-2	Interatomic distance (Å)	Clash overlap (Å)
1:C:8:LYS:HD2	1:C:161:LEU:HD11	1.95	0.48
1:C:241:ARG:HD2	1:E:271:GLN:OE1	2.13	0.48
1:D:2:ALA:N	1:E:70:GLU:OE2	2.46	0.48
1:E:49:ALA:HB3	1:E:76:VAL:HG23	1.95	0.48
1:B:223:GLU:HB3	1:B:258:PHE:HA	1.95	0.48
1:A:82:ASP:OD2	1:A:85:SER:HB3	2.14	0.48
1:B:24:ALA:HB2	1:B:108:LEU:HD22	1.96	0.48
1:A:155:LYS:NZ	4:A:608:HOH:O	2.43	0.47
1:A:8:LYS:HD2	1:A:161:LEU:HD11	1.97	0.47
1:A:70:GLU:OE1	4:A:604:HOH:O	2.20	0.47
1:A:163:GLN:NE2	4:A:614:HOH:O	2.48	0.47
2:D:501:COA:H72	2:D:501:COA:H121	1.96	0.47
2:E:501:COA:O6A	2:E:501:COA:H21	2.15	0.46
1:A:259:ARG:NH1	3:A:502:PO4:O2	2.43	0.46
2:B:501:COA:H121	2:B:501:COA:H72	1.98	0.46
1:C:126:LYS:HE2	1:C:152:ASP:OD1	2.16	0.46
1:D:3:THR:HG23	1:D:5:ALA:H	1.81	0.46
1:D:3:THR:CG2	1:D:6:THR:H	2.29	0.45
1:E:15:LEU:O	1:E:42:LEU:HD21	2.16	0.45
1:C:101:LYS:CG	2:C:501:COA:H142	2.47	0.45
1:D:176[A]:CYS:SG	1:D:177:SER:N	2.89	0.45
1:E:161:LEU:O	1:E:165:LEU:HD22	2.17	0.45
1:C:57:PHE:CG	2:C:501:COA:H22	2.52	0.44
1:F:218:ASP:HB2	1:F:249:ARG:HB3	1.98	0.44
2:A:501:COA:CCP	2:A:501:COA:H72	2.47	0.44
1:B:105:TYR:CE2	1:B:141:GLU:HG3	2.52	0.44
1:B:141:GLU:O	1:B:143:GLY:N	2.44	0.44
1:E:126:LYS:HB3	1:E:154:PHE:HA	2.00	0.44
1:B:82:ASP:OD1	1:B:82:ASP:N	2.50	0.44
1:B:237:ASP:OD1	1:B:241:ARG:NH1	2.51	0.44
1:D:25:PHE:CD2	1:D:69:ALA:HB2	2.53	0.44
1:F:200:GLU:HG2	1:F:213:VAL:HG23	2.00	0.43
1:D:25:PHE:CE2	1:D:69:ALA:HB2	2.52	0.43
1:A:35:LEU:HD23	1:A:72:LEU:HD12	2.01	0.43
1:F:36:LYS:HE3	1:F:40:ASP:OD1	2.19	0.43
1:F:122:ASP:OD2	1:F:124:MET:HG2	2.19	0.43
1:D:145:ARG:NH2	1:D:150:GLU:OE1	2.52	0.43
1:F:81:LEU:HD22	1:F:103:MET:HG2	2.00	0.43
1:A:3:THR:O	1:A:7:LYS:HG3	2.18	0.43
1:C:29:ILE:CD1	1:C:159:ARG:HD3	2.49	0.43
1:B:224:LEU:HD12	1:B:253:LEU:HD11	2.01	0.43

Continued on next page...

Continued from previous page...

Atom-1	Atom-2	Interatomic distance (Å)	Clash overlap (Å)
1:C:126:LYS:HD3	1:C:152:ASP:HA	1.99	0.43
1:E:97:TRP:HB2	2:E:501:COA:C3P	2.48	0.43
1:E:122:ASP:OD2	1:E:124:MET:HG3	2.18	0.42
1:A:39:LEU:HD11	1:A:74:ALA:HB2	2.01	0.42
1:C:81:LEU:HD22	1:C:103:MET:HG2	2.02	0.42
2:D:501:COA:H72	2:D:501:COA:H10	1.63	0.42
1:E:81:LEU:HD22	1:E:103:MET:HG2	2.01	0.42
2:F:501:COA:O1A	4:F:602:HOH:O	2.22	0.42
1:A:25:PHE:CZ	1:A:27:GLY:HA2	2.55	0.42
2:C:501:COA:H72	2:C:501:COA:N7A	2.34	0.42
2:A:501:COA:O5A	2:A:501:COA:H21	2.20	0.42
1:C:30:ASP:HB3	1:C:123:GLY:O	2.20	0.42
1:D:53:ASN:OD1	4:D:601:HOH:O	2.22	0.42
1:F:225:PRO:HA	4:F:633:HOH:O	2.20	0.41
1:F:29:ILE:HD12	1:F:170:TRP:CZ2	2.55	0.41
1:A:112:ALA:HB1	1:A:117:SER:HB2	2.03	0.41
1:A:161:LEU:O	1:A:165:LEU:HG	2.21	0.41
1:A:224:LEU:HD12	1:A:253:LEU:HD11	2.03	0.41
1:E:8:LYS:HD2	1:E:161:LEU:HD11	2.01	0.41
1:C:97:TRP:HA	1:C:97:TRP:HE3	1.81	0.41
1:E:53:ASN:HB2	1:E:62:PHE:CD2	2.55	0.41
1:D:50:VAL:HA	1:D:77:GLN:O	2.20	0.41
1:D:29:ILE:HD12	1:D:170:TRP:CZ2	2.55	0.41
1:B:36:LYS:HA	1:B:36:LYS:HD2	1.80	0.41
1:C:178:VAL:CB	1:C:197:MET:HE3	2.48	0.41
1:D:72:LEU:HA	4:F:628:HOH:O	2.20	0.41
1:E:57:PHE:O	4:E:601:HOH:O	2.22	0.41
1:A:183:PRO:HD3	1:A:215:PHE:O	2.21	0.41
1:B:55:GLU:HG3	1:B:84:LEU:HG	2.02	0.41
1:B:214:ARG:HE	1:B:223:GLU:CD	2.23	0.41
1:E:53:ASN:O	1:E:80:THR:HA	2.20	0.41
1:A:279:TRP:CD2	1:F:249:ARG:HD2	2.57	0.40
1:E:221:ARG:NH1	1:E:254:ASP:OD2	2.47	0.40
1:B:39:LEU:HD11	1:B:74:ALA:HB2	2.03	0.40

All (1) symmetry-related close contacts are listed below. The label for Atom-2 includes the symmetry operator and encoded unit-cell translations to be applied.

Atom-1	Atom-2	Interatomic distance (Å)	Clash overlap (Å)
4:E:655:HOH:O	4:E:681:HOH:O[8_555]	2.19	0.01

5.3 Torsion angles [i](#)

5.3.1 Protein backbone [i](#)

In the following table, the Percentiles column shows the percent Ramachandran outliers of the chain as a percentile score with respect to all X-ray entries followed by that with respect to entries of similar resolution.

The Analysed column shows the number of residues for which the backbone conformation was analysed, and the total number of residues.

Mol	Chain	Analysed	Favoured	Allowed	Outliers	Percentiles	
1	A	264/286 (92%)	257 (97%)	7 (3%)	0	100	100
1	B	243/286 (85%)	235 (97%)	8 (3%)	0	100	100
1	C	253/286 (88%)	244 (96%)	9 (4%)	0	100	100
1	D	237/286 (83%)	232 (98%)	5 (2%)	0	100	100
1	E	259/286 (91%)	252 (97%)	7 (3%)	0	100	100
1	F	249/286 (87%)	244 (98%)	5 (2%)	0	100	100
All	All	1505/1716 (88%)	1464 (97%)	41 (3%)	0	100	100

There are no Ramachandran outliers to report.

5.3.2 Protein sidechains [i](#)

In the following table, the Percentiles column shows the percent sidechain outliers of the chain as a percentile score with respect to all X-ray entries followed by that with respect to entries of similar resolution.

The Analysed column shows the number of residues for which the sidechain conformation was analysed, and the total number of residues.

Mol	Chain	Analysed	Rotameric	Outliers	Percentiles	
1	A	205/236 (87%)	203 (99%)	2 (1%)	76	81
1	B	197/236 (84%)	197 (100%)	0	100	100
1	C	203/236 (86%)	202 (100%)	1 (0%)	88	92
1	D	181/236 (77%)	179 (99%)	2 (1%)	73	78
1	E	205/236 (87%)	204 (100%)	1 (0%)	88	92
1	F	202/236 (86%)	199 (98%)	3 (2%)	65	69
All	All	1193/1416 (84%)	1184 (99%)	9 (1%)	84	85

All (9) residues with a non-rotameric sidechain are listed below:

Mol	Chain	Res	Type
1	A	67	SER
1	A	96	SER
1	C	263	MET
1	D	176[A]	CYS
1	D	176[B]	CYS
1	E	103	MET
1	F	67	SER
1	F	77	GLN
1	F	103	MET

Sometimes sidechains can be flipped to improve hydrogen bonding and reduce clashes. All (3) such sidechains are listed below:

Mol	Chain	Res	Type
1	A	19	GLN
1	E	77	GLN
1	F	46	ASN

5.3.3 RNA [i](#)

There are no RNA molecules in this entry.

5.4 Non-standard residues in protein, DNA, RNA chains [i](#)

There are no non-standard protein/DNA/RNA residues in this entry.

5.5 Carbohydrates [i](#)

There are no monosaccharides in this entry.

5.6 Ligand geometry [i](#)

12 ligands are modelled in this entry.

In the following table, the Counts columns list the number of bonds (or angles) for which Mogul statistics could be retrieved, the number of bonds (or angles) that are observed in the model and the number of bonds (or angles) that are defined in the Chemical Component Dictionary. The Link column lists molecule types, if any, to which the group is linked. The Z score for a bond length (or angle) is the number of standard deviations the observed value is removed from the

expected value. A bond length (or angle) with $|Z| > 2$ is considered an outlier worth inspection. RMSZ is the root-mean-square of all Z scores of the bond lengths (or angles).

Mol	Type	Chain	Res	Link	Bond lengths			Bond angles		
					Counts	RMSZ	$\# Z > 2$	Counts	RMSZ	$\# Z > 2$
3	PO4	D	502	-	4,4,4	0.92	0	6,6,6	0.41	0
2	COA	A	501	-	41,50,50	0.66	0	52,75,75	0.72	1 (1%)
3	PO4	B	502	-	4,4,4	0.78	0	6,6,6	0.42	0
3	PO4	E	502	-	4,4,4	0.98	0	6,6,6	0.62	0
3	PO4	F	502	-	4,4,4	1.14	0	6,6,6	0.64	0
2	COA	B	501	-	41,50,50	0.68	0	52,75,75	0.74	1 (1%)
2	COA	F	501	-	41,50,50	0.65	1 (2%)	52,75,75	1.30	5 (9%)
2	COA	E	501	-	41,50,50	0.55	0	52,75,75	0.71	1 (1%)
2	COA	C	501	-	41,50,50	0.60	0	52,75,75	1.16	4 (7%)
2	COA	D	501	-	41,50,50	0.55	0	52,75,75	0.65	1 (1%)
3	PO4	A	502	-	4,4,4	0.81	0	6,6,6	0.48	0
3	PO4	C	502	-	4,4,4	0.75	0	6,6,6	0.59	0

In the following table, the Chirals column lists the number of chiral outliers, the number of chiral centers analysed, the number of these observed in the model and the number defined in the Chemical Component Dictionary. Similar counts are reported in the Torsion and Rings columns. '-' means no outliers of that kind were identified.

Mol	Type	Chain	Res	Link	Chirals	Torsions	Rings
2	COA	A	501	-	-	23/44/64/64	0/3/3/3
2	COA	B	501	-	-	20/44/64/64	0/3/3/3
2	COA	F	501	-	-	18/44/64/64	0/3/3/3
2	COA	E	501	-	-	18/44/64/64	0/3/3/3
2	COA	C	501	-	-	19/44/64/64	0/3/3/3
2	COA	D	501	-	-	18/44/64/64	0/3/3/3

All (1) bond length outliers are listed below:

Mol	Chain	Res	Type	Atoms	Z	Observed(Å)	Ideal(Å)
2	F	501	COA	C8A-N7A	-2.07	1.31	1.34

All (13) bond angle outliers are listed below:

Mol	Chain	Res	Type	Atoms	Z	Observed(°)	Ideal(°)
2	F	501	COA	O6A-CCP-CBP	6.46	120.94	110.55
2	C	501	COA	C3P-N4P-C5P	5.49	133.03	122.84

Continued on next page...

Continued from previous page...

Mol	Chain	Res	Type	Atoms	Z	Observed(°)	Ideal(°)
2	F	501	COA	C7P-N8P-C9P	2.95	127.86	122.59
2	C	501	COA	C6P-C5P-N4P	2.75	121.05	116.42
2	A	501	COA	C5A-C6A-N6A	2.30	123.85	120.35
2	D	501	COA	C5A-C6A-N6A	2.25	123.77	120.35
2	F	501	COA	CAP-C9P-N8P	2.17	120.89	116.58
2	B	501	COA	C5A-C6A-N6A	2.16	123.64	120.35
2	C	501	COA	C5A-C6A-N6A	2.15	123.61	120.35
2	F	501	COA	C5A-C6A-N6A	2.13	123.59	120.35
2	E	501	COA	C5A-C6A-N6A	2.09	123.53	120.35
2	C	501	COA	O5P-C5P-C6P	-2.09	118.19	122.02
2	F	501	COA	O2B-C2B-C3B	2.04	116.96	111.17

There are no chirality outliers.

All (116) torsion outliers are listed below:

Mol	Chain	Res	Type	Atoms
2	A	501	COA	C5B-O5B-P1A-O1A
2	A	501	COA	C5B-O5B-P1A-O2A
2	A	501	COA	CCP-O6A-P2A-O3A
2	A	501	COA	OAP-CAP-CBP-CCP
2	A	501	COA	C9P-CAP-CBP-CCP
2	A	501	COA	OAP-CAP-CBP-CDP
2	A	501	COA	C9P-CAP-CBP-CDP
2	A	501	COA	OAP-CAP-CBP-CEP
2	A	501	COA	C9P-CAP-CBP-CEP
2	A	501	COA	CAP-C9P-N8P-C7P
2	A	501	COA	C5P-C6P-C7P-N8P
2	B	501	COA	C5B-O5B-P1A-O1A
2	B	501	COA	C5B-O5B-P1A-O2A
2	B	501	COA	CDP-CBP-CCP-O6A
2	B	501	COA	CEP-CBP-CCP-O6A
2	B	501	COA	CAP-CBP-CCP-O6A
2	B	501	COA	OAP-CAP-CBP-CCP
2	B	501	COA	C9P-CAP-CBP-CCP
2	B	501	COA	OAP-CAP-CBP-CDP
2	B	501	COA	C9P-CAP-CBP-CDP
2	B	501	COA	OAP-CAP-CBP-CEP
2	B	501	COA	C9P-CAP-CBP-CEP
2	B	501	COA	CAP-C9P-N8P-C7P
2	B	501	COA	O5P-C5P-C6P-C7P
2	B	501	COA	N4P-C5P-C6P-C7P
2	B	501	COA	S1P-C2P-C3P-N4P

Continued on next page...

Continued from previous page...

Mol	Chain	Res	Type	Atoms
2	C	501	COA	C5B-O5B-P1A-O2A
2	C	501	COA	CCP-O6A-P2A-O3A
2	C	501	COA	CAP-CBP-CCP-O6A
2	C	501	COA	O9P-C9P-CAP-CBP
2	C	501	COA	N8P-C9P-CAP-CBP
2	C	501	COA	O9P-C9P-CAP-OAP
2	C	501	COA	N8P-C9P-CAP-OAP
2	C	501	COA	CAP-C9P-N8P-C7P
2	C	501	COA	C2P-C3P-N4P-C5P
2	D	501	COA	C5B-O5B-P1A-O1A
2	D	501	COA	C5B-O5B-P1A-O2A
2	D	501	COA	CDP-CBP-CCP-O6A
2	D	501	COA	CEP-CBP-CCP-O6A
2	D	501	COA	CAP-CBP-CCP-O6A
2	D	501	COA	OAP-CAP-CBP-CCP
2	D	501	COA	C9P-CAP-CBP-CCP
2	D	501	COA	OAP-CAP-CBP-CDP
2	D	501	COA	C9P-CAP-CBP-CDP
2	D	501	COA	OAP-CAP-CBP-CEP
2	D	501	COA	C9P-CAP-CBP-CEP
2	D	501	COA	CAP-C9P-N8P-C7P
2	D	501	COA	S1P-C2P-C3P-N4P
2	E	501	COA	CCP-O6A-P2A-O3A
2	E	501	COA	CAP-CBP-CCP-O6A
2	E	501	COA	OAP-CAP-CBP-CCP
2	E	501	COA	C9P-CAP-CBP-CCP
2	E	501	COA	OAP-CAP-CBP-CDP
2	E	501	COA	C9P-CAP-CBP-CDP
2	E	501	COA	OAP-CAP-CBP-CEP
2	E	501	COA	C9P-CAP-CBP-CEP
2	E	501	COA	CAP-C9P-N8P-C7P
2	E	501	COA	S1P-C2P-C3P-N4P
2	F	501	COA	CCP-O6A-P2A-O3A
2	F	501	COA	CAP-CBP-CCP-O6A
2	F	501	COA	OAP-CAP-CBP-CCP
2	F	501	COA	C9P-CAP-CBP-CCP
2	F	501	COA	OAP-CAP-CBP-CDP
2	F	501	COA	C9P-CAP-CBP-CDP
2	F	501	COA	OAP-CAP-CBP-CEP
2	F	501	COA	C9P-CAP-CBP-CEP
2	F	501	COA	O9P-C9P-CAP-CBP
2	F	501	COA	N8P-C9P-CAP-CBP

Continued on next page...

Continued from previous page...

Mol	Chain	Res	Type	Atoms
2	F	501	COA	CAP-C9P-N8P-C7P
2	F	501	COA	S1P-C2P-C3P-N4P
2	C	501	COA	C6P-C5P-N4P-C3P
2	A	501	COA	O9P-C9P-N8P-C7P
2	B	501	COA	O9P-C9P-N8P-C7P
2	C	501	COA	O9P-C9P-N8P-C7P
2	D	501	COA	O9P-C9P-N8P-C7P
2	E	501	COA	O9P-C9P-N8P-C7P
2	F	501	COA	O9P-C9P-N8P-C7P
2	A	501	COA	O4B-C4B-C5B-O5B
2	C	501	COA	O5P-C5P-N4P-C3P
2	C	501	COA	CDP-CBP-CCP-O6A
2	C	501	COA	CEP-CBP-CCP-O6A
2	E	501	COA	CEP-CBP-CCP-O6A
2	F	501	COA	CDP-CBP-CCP-O6A
2	A	501	COA	O5P-C5P-C6P-C7P
2	F	501	COA	N8P-C9P-CAP-OAP
2	B	501	COA	C5P-C6P-C7P-N8P
2	C	501	COA	C5B-O5B-P1A-O3A
2	E	501	COA	N4P-C5P-C6P-C7P
2	B	501	COA	P1A-O3A-P2A-O4A
2	A	501	COA	CCP-O6A-P2A-O4A
2	A	501	COA	CCP-O6A-P2A-O5A
2	C	501	COA	C5B-O5B-P1A-O1A
2	D	501	COA	CCP-O6A-P2A-O4A
2	E	501	COA	CCP-O6A-P2A-O4A
2	E	501	COA	CCP-O6A-P2A-O5A
2	A	501	COA	C3B-C4B-C5B-O5B
2	E	501	COA	C3B-C4B-C5B-O5B
2	A	501	COA	C2P-C3P-N4P-C5P
2	A	501	COA	N4P-C5P-C6P-C7P
2	A	501	COA	CDP-CBP-CCP-O6A
2	E	501	COA	O5P-C5P-C6P-C7P
2	F	501	COA	P2A-O3A-P1A-O2A
2	E	501	COA	CDP-CBP-CCP-O6A
2	F	501	COA	CEP-CBP-CCP-O6A
2	A	501	COA	C5B-O5B-P1A-O3A
2	B	501	COA	C5B-O5B-P1A-O3A
2	D	501	COA	C5B-O5B-P1A-O3A
2	D	501	COA	CCP-O6A-P2A-O3A
2	C	501	COA	O4B-C4B-C5B-O5B
2	A	501	COA	CBP-CCP-O6A-P2A

Continued on next page...

Continued from previous page...

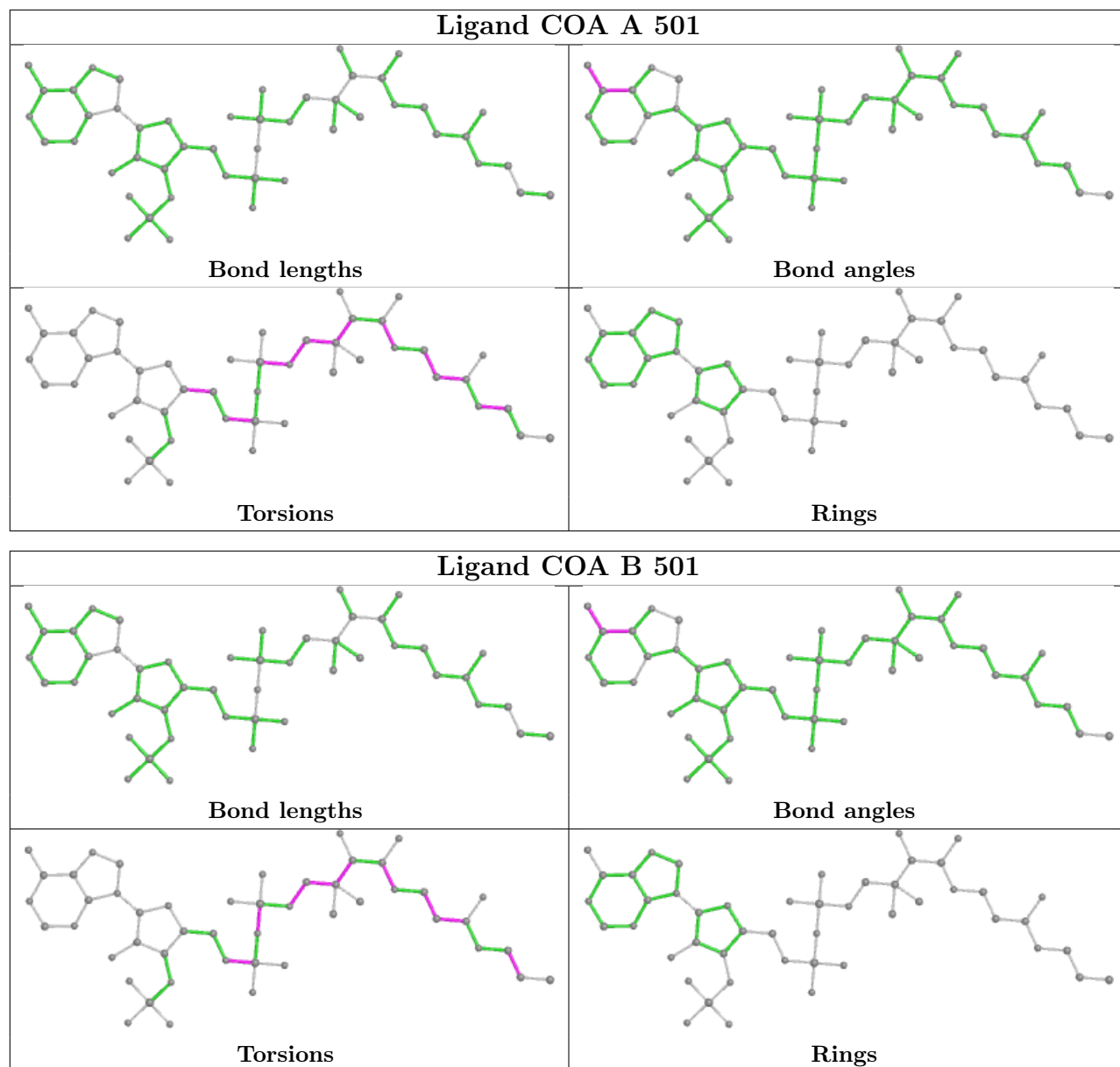
Mol	Chain	Res	Type	Atoms
2	B	501	COA	CBP-CCP-O6A-P2A
2	C	501	COA	CBP-CCP-O6A-P2A
2	C	501	COA	CCP-O6A-P2A-O4A
2	D	501	COA	CCP-O6A-P2A-O5A
2	F	501	COA	CCP-O6A-P2A-O4A
2	A	501	COA	CEP-CBP-CCP-O6A

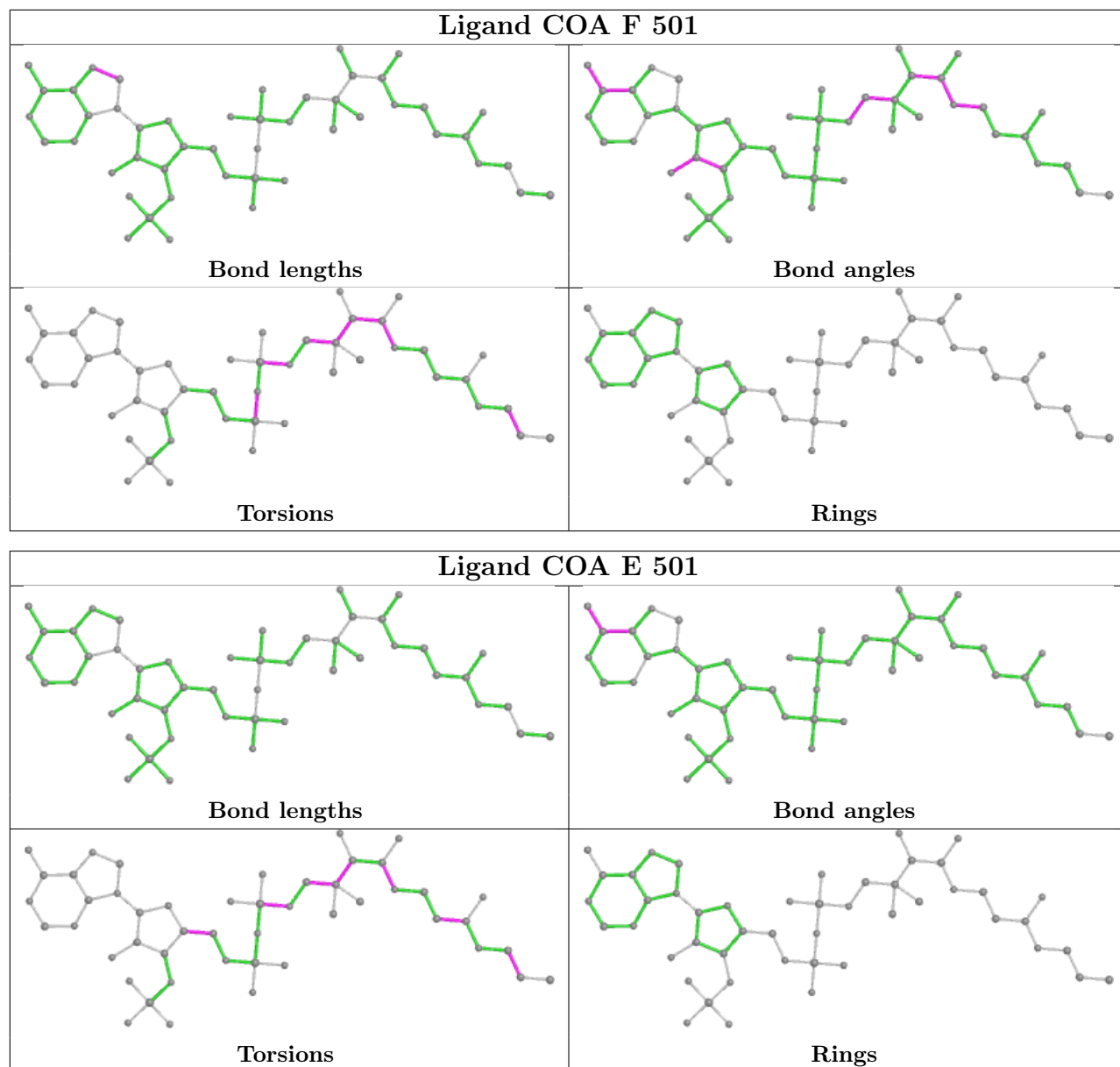
There are no ring outliers.

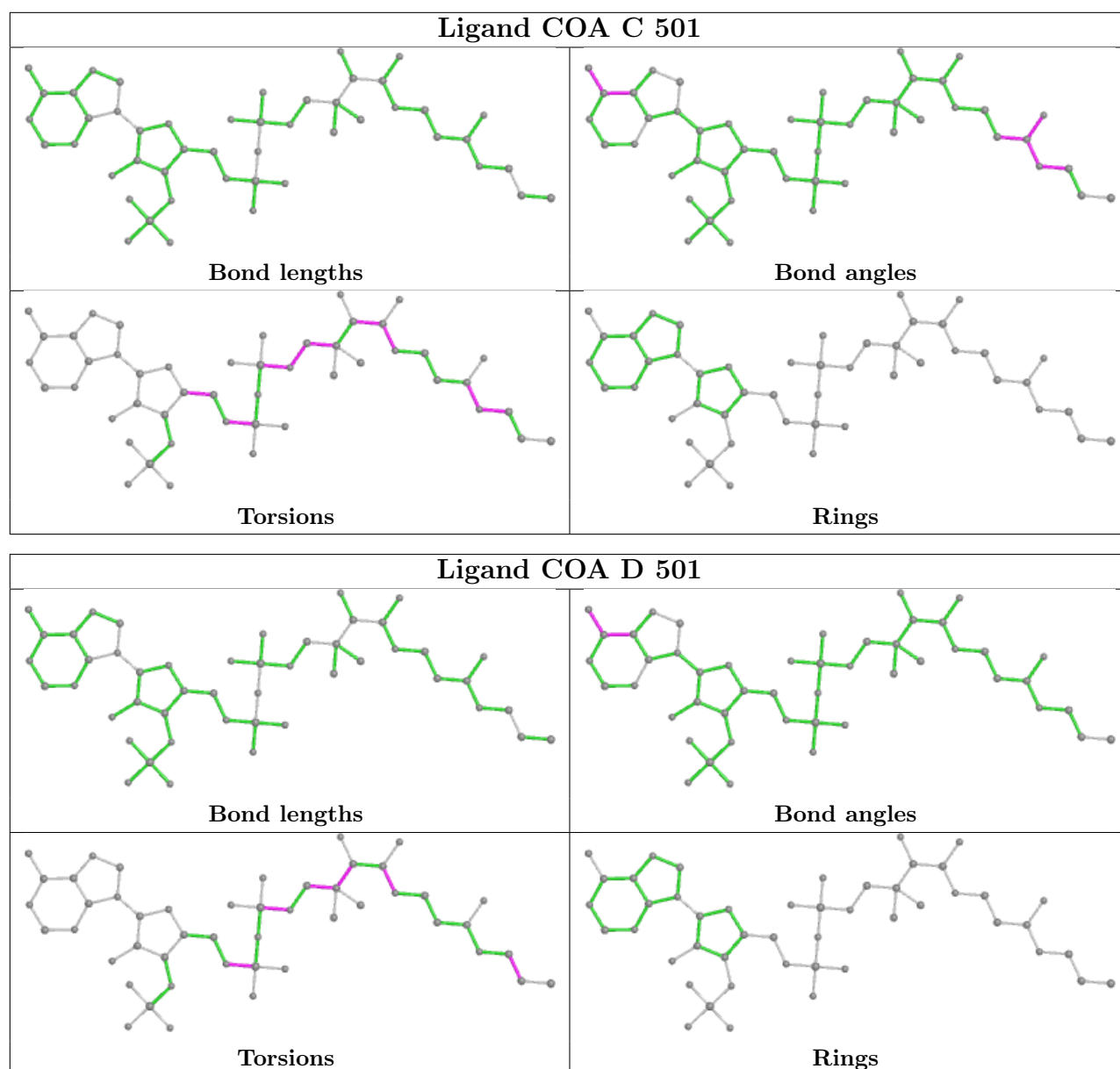
8 monomers are involved in 25 short contacts:

Mol	Chain	Res	Type	Clashes	Symm-Clashes
3	D	502	PO4	1	0
2	A	501	COA	2	0
2	B	501	COA	1	0
2	F	501	COA	4	0
2	E	501	COA	5	0
2	C	501	COA	9	0
2	D	501	COA	2	0
3	A	502	PO4	1	0

The following is a two-dimensional graphical depiction of Mogul quality analysis of bond lengths, bond angles, torsion angles, and ring geometry for all instances of the Ligand of Interest. In addition, ligands with molecular weight > 250 and outliers as shown on the validation Tables will also be included. For torsion angles, if less than 5% of the Mogul distribution of torsion angles is within 10 degrees of the torsion angle in question, then that torsion angle is considered an outlier. Any bond that is central to one or more torsion angles identified as an outlier by Mogul will be highlighted in the graph. For rings, the root-mean-square deviation (RMSD) between the ring in question and similar rings identified by Mogul is calculated over all ring torsion angles. If the average RMSD is greater than 60 degrees and the minimal RMSD between the ring in question and any Mogul-identified rings is also greater than 60 degrees, then that ring is considered an outlier. The outliers are highlighted in purple. The color gray indicates Mogul did not find sufficient equivalents in the CSD to analyse the geometry.







5.7 Other polymers [i](#)

There are no such residues in this entry.

5.8 Polymer linkage issues [i](#)

There are no chain breaks in this entry.

6 Fit of model and data

6.1 Protein, DNA and RNA chains

In the following table, the column labelled ‘#RSRZ > 2’ contains the number (and percentage) of RSRZ outliers, followed by percent RSRZ outliers for the chain as percentile scores relative to all X-ray entries and entries of similar resolution. The OWAB column contains the minimum, median, 95th percentile and maximum values of the occupancy-weighted average B-factor per residue. The column labelled ‘Q < 0.9’ lists the number of (and percentage) of residues with an average occupancy less than 0.9.

Mol	Chain	Analysed	<RSRZ>	#RSRZ>2	OWAB(Å ²)	Q<0.9
1	A	268/286 (93%)	-0.14	6 (2%) 62 66	23, 40, 61, 75	0
1	B	247/286 (86%)	-0.10	0 100 100	22, 37, 54, 79	0
1	C	255/286 (89%)	-0.06	9 (3%) 44 49	21, 35, 62, 87	0
1	D	240/286 (83%)	0.51	18 (7%) 14 17	24, 55, 91, 138	0
1	E	263/286 (91%)	0.13	9 (3%) 45 50	23, 48, 73, 89	0
1	F	252/286 (88%)	-0.05	8 (3%) 47 53	23, 38, 59, 86	0
All	All	1525/1716 (88%)	0.05	50 (3%) 46 52	21, 40, 74, 138	0

All (50) RSRZ outliers are listed below:

Mol	Chain	Res	Type	RSRZ
1	D	5	ALA	5.8
1	E	97	TRP	5.8
1	D	7	LYS	5.2
1	D	174	ALA	5.0
1	E	175	SER	4.8
1	C	174	ALA	4.6
1	D	18	LEU	4.4
1	C	262	ARG	4.4
1	E	113	ALA	4.3
1	D	160	ALA	4.1
1	C	127	ASN	3.9
1	F	134	PRO	3.9
1	C	175	SER	3.7
1	C	261	GLY	3.4
1	A	279	TRP	3.3
1	D	2	ALA	3.1
1	C	97	TRP	3.1
1	D	113	ALA	3.1
1	E	18	LEU	2.9

Continued on next page...

Continued from previous page...

Mol	Chain	Res	Type	RSRZ
1	E	174	ALA	2.9
1	A	173	VAL	2.8
1	D	154	PHE	2.8
1	D	4	LEU	2.8
1	F	98	TYR	2.7
1	C	173	VAL	2.7
1	F	138	ALA	2.7
1	F	95	ASP	2.7
1	D	153	PHE	2.6
1	D	173	VAL	2.5
1	E	112	ALA	2.5
1	F	173	VAL	2.5
1	F	97	TRP	2.5
1	E	154	PHE	2.4
1	D	8	LYS	2.4
1	F	175	SER	2.4
1	E	144	ALA	2.4
1	A	142	ALA	2.3
1	D	147	LEU	2.3
1	A	138	ALA	2.3
1	D	69	ALA	2.2
1	F	136	LEU	2.2
1	D	125	ILE	2.2
1	D	3	THR	2.2
1	D	149	GLN	2.2
1	A	174	ALA	2.2
1	A	172	LYS	2.2
1	C	165	LEU	2.1
1	C	172	LYS	2.1
1	E	98	TYR	2.1
1	D	82	ASP	2.0

6.2 Non-standard residues in protein, DNA, RNA chains [i](#)

There are no non-standard protein/DNA/RNA residues in this entry.

6.3 Carbohydrates [i](#)

There are no monosaccharides in this entry.

6.4 Ligands

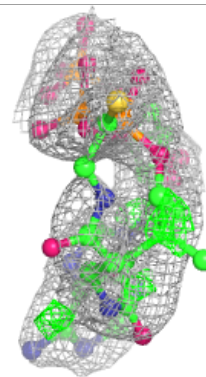
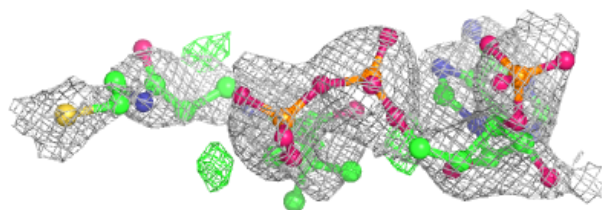
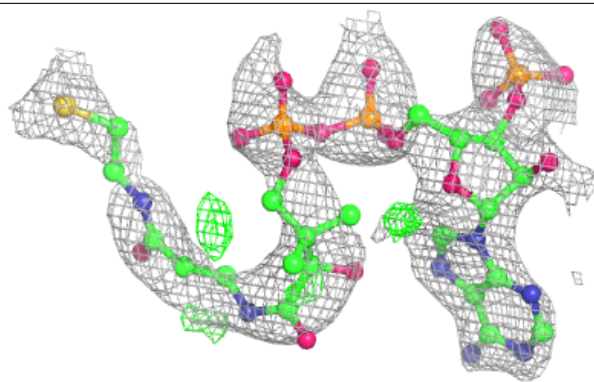
In the following table, the Atoms column lists the number of modelled atoms in the group and the number defined in the chemical component dictionary. The B-factors column lists the minimum, median, 95th percentile and maximum values of B factors of atoms in the group. The column labelled 'Q< 0.9' lists the number of atoms with occupancy less than 0.9.

Mol	Type	Chain	Res	Atoms	RSCC	RSR	B-factors(Å ²)	Q<0.9
2	COA	D	501	48/48	0.86	0.21	46,74,86,89	48
2	COA	E	501	48/48	0.91	0.19	38,86,95,102	48
2	COA	B	501	48/48	0.92	0.16	29,52,86,90	48
2	COA	A	501	48/48	0.93	0.17	27,52,81,89	48
2	COA	C	501	48/48	0.93	0.16	22,55,100,101	0
2	COA	F	501	48/48	0.93	0.14	22,43,73,77	0
3	PO4	A	502	5/5	0.97	0.11	34,37,41,47	0
3	PO4	B	502	5/5	0.99	0.09	33,33,36,38	0
3	PO4	C	502	5/5	0.99	0.11	36,38,43,44	0
3	PO4	D	502	5/5	0.99	0.08	32,36,39,43	0
3	PO4	E	502	5/5	0.99	0.11	33,35,40,43	0
3	PO4	F	502	5/5	0.99	0.09	33,37,40,41	0

The following is a graphical depiction of the model fit to experimental electron density of all instances of the Ligand of Interest. In addition, ligands with molecular weight > 250 and outliers as shown on the geometry validation Tables will also be included. Each fit is shown from different orientation to approximate a three-dimensional view.

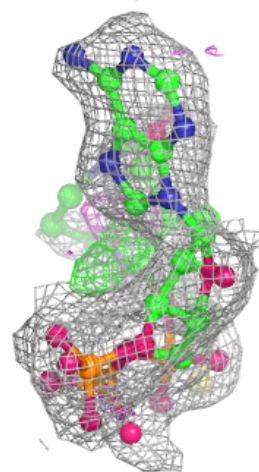
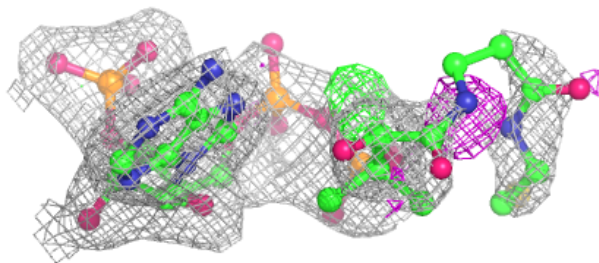
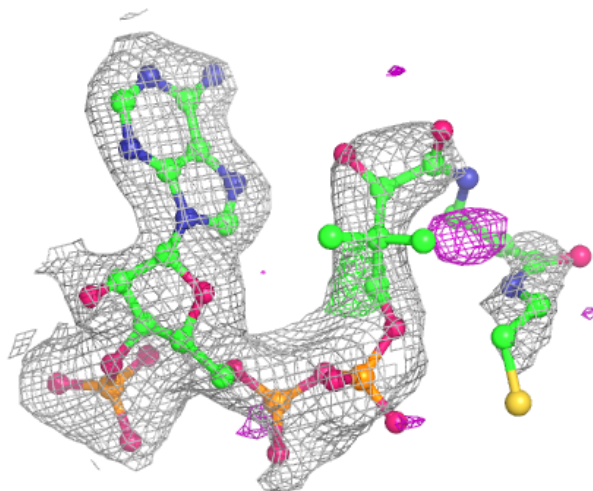
Electron density around COA D 501:

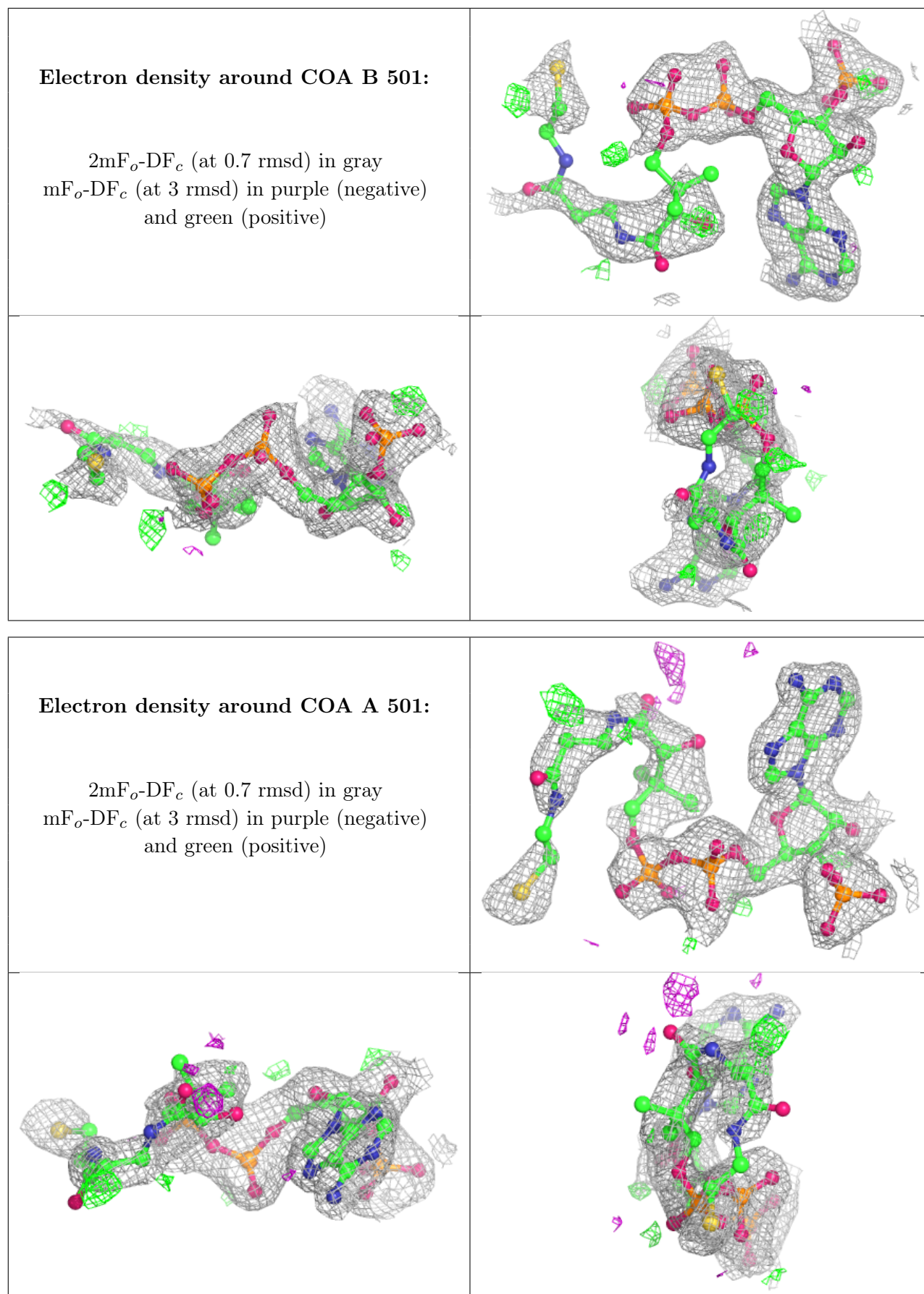
$2mF_o-DF_c$ (at 0.7 rmsd) in gray
 mF_o-DF_c (at 3 rmsd) in purple (negative)
and green (positive)



Electron density around COA E 501:

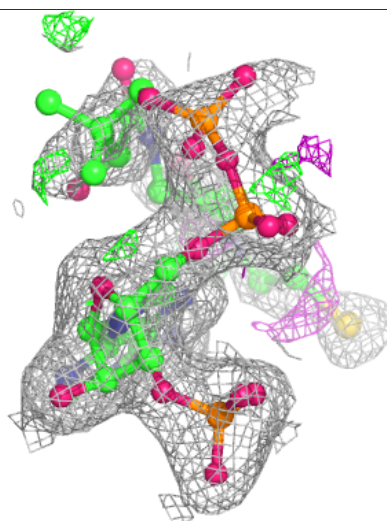
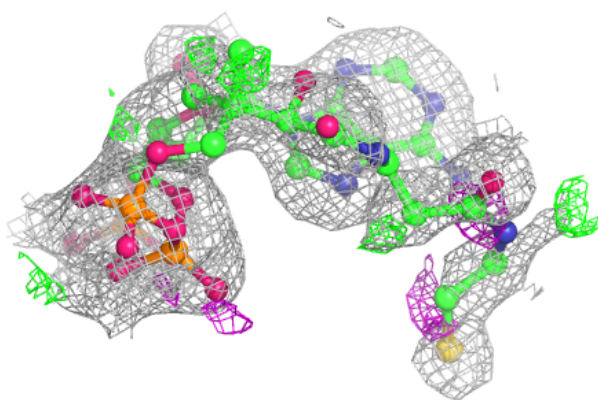
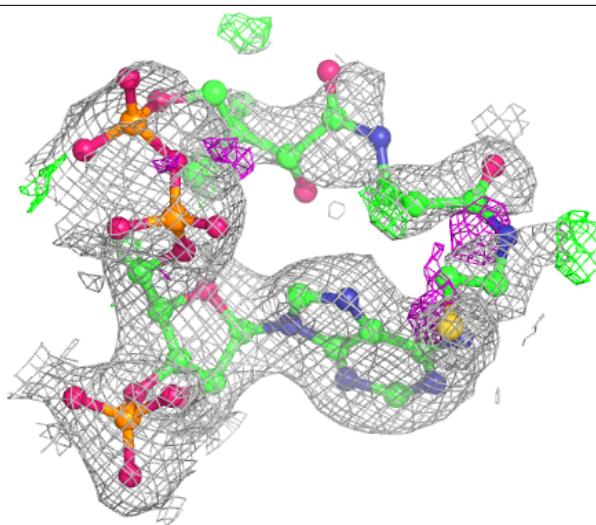
$2mF_o-DF_c$ (at 0.7 rmsd) in gray
 mF_o-DF_c (at 3 rmsd) in purple (negative)
and green (positive)

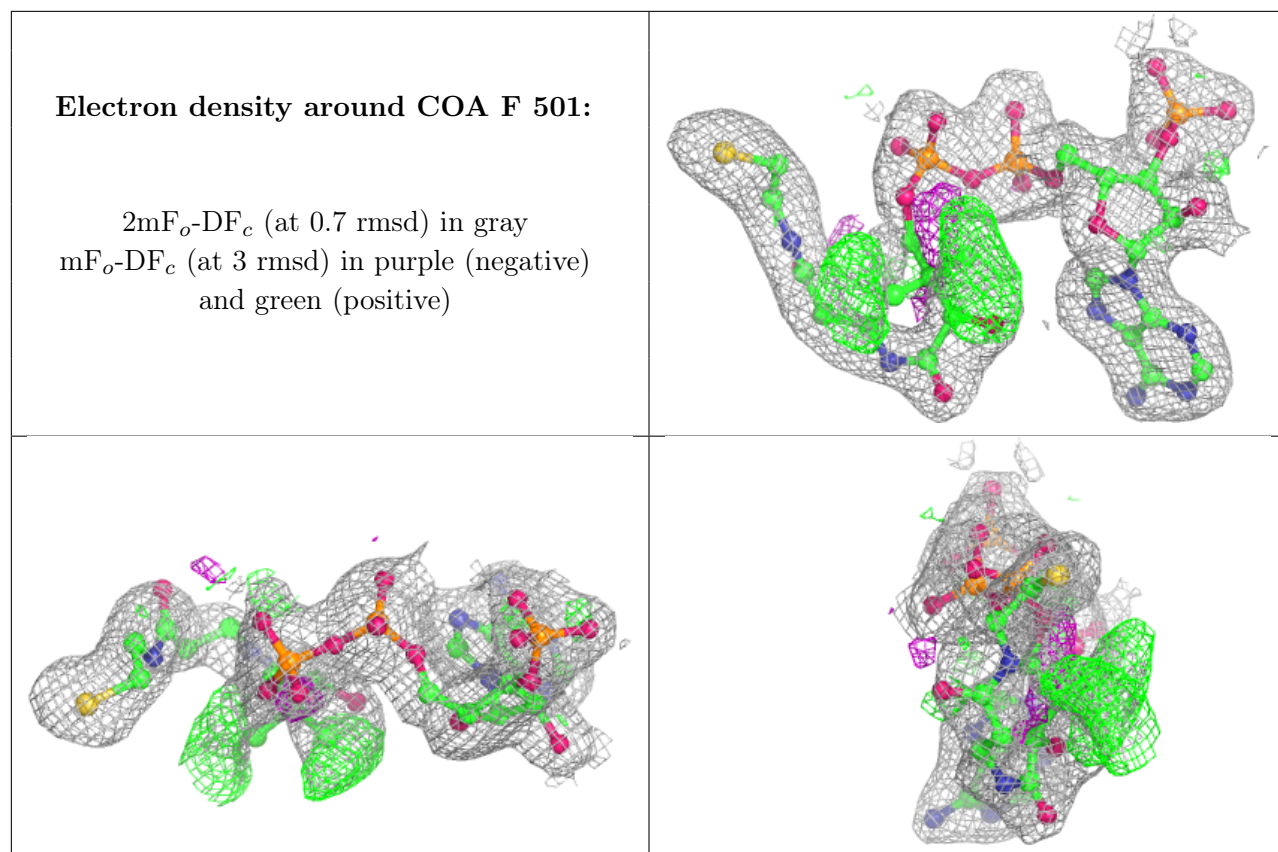




Electron density around COA C 501:

$2mF_o-DF_c$ (at 0.7 rmsd) in gray
 mF_o-DF_c (at 3 rmsd) in purple (negative)
and green (positive)





6.5 Other polymers [i](#)

There are no such residues in this entry.