



Full wwPDB X-ray Structure Validation Report ⓘ

Oct 31, 2024 – 02:42 PM EDT

PDB ID : 9B2O
Title : Structure of the quorum quenching lactonase GcL bound to the hydrolysis product of N-octanoyl-L-homoserine lactone
Authors : Corbella, M.; Bravo, J.A.; Demkiv, A.O.; Calixto, A.R.; Sompiyachoke, K.; Bergonzi, C.; Kamerlin, S.C.L.; Elias, M.
Deposited on : 2024-03-15
Resolution : 1.85 Å(reported)

This is a Full wwPDB X-ray Structure Validation Report for a publicly released PDB entry.

We welcome your comments at validation@mail.wwpdb.org

A user guide is available at

<https://www.wwpdb.org/validation/2017/XrayValidationReportHelp>

with specific help available everywhere you see the ⓘ symbol.

The types of validation reports are described at

<http://www.wwpdb.org/validation/2017/FAQs#types>.

The following versions of software and data (see [references ⓘ](#)) were used in the production of this report:

MolProbity : 4.02b-467
Mogul : 2022.3.0, CSD as543be (2022)
Xtriage (Phenix) : 1.20.1
EDS : 3.0
Percentile statistics : 20231227.v01 (using entries in the PDB archive December 27th 2023)
CCP4 : 9.0.003 (Gargrove)
Density-Fitness : 1.0.11
Ideal geometry (proteins) : Engh & Huber (2001)
Ideal geometry (DNA, RNA) : Parkinson et al. (1996)
Validation Pipeline (wwPDB-VP) : 2.39

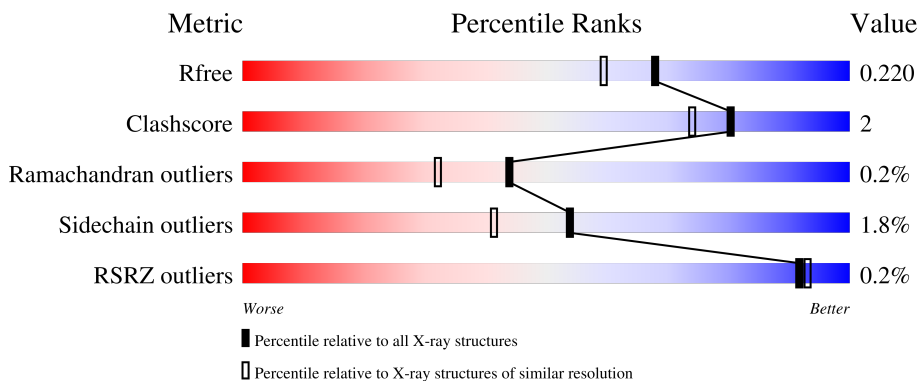
1 Overall quality at a glance i

The following experimental techniques were used to determine the structure:

X-RAY DIFFRACTION

The reported resolution of this entry is 1.85 Å.

Percentile scores (ranging between 0-100) for global validation metrics of the entry are shown in the following graphic. The table shows the number of entries on which the scores are based.



Metric	Whole archive (#Entries)	Similar resolution (#Entries, resolution range(Å))
R_{free}	164625	3097 (1.86-1.86)
Clashscore	180529	3359 (1.86-1.86)
Ramachandran outliers	177936	3335 (1.86-1.86)
Sidechain outliers	177891	3335 (1.86-1.86)
RSRZ outliers	164620	3097 (1.86-1.86)

The table below summarises the geometric issues observed across the polymeric chains and their fit to the electron density. The red, orange, yellow and green segments of the lower bar indicate the fraction of residues that contain outliers for ≥ 3 , 2, 1 and 0 types of geometric quality criteria respectively. A grey segment represents the fraction of residues that are not modelled. The numeric value for each fraction is indicated below the corresponding segment, with a dot representing fractions $\leq 5\%$. The upper red bar (where present) indicates the fraction of residues that have poor fit to the electron density. The numeric value is given above the bar.

Mol	Chain	Length	Quality of chain
1	F	297	 85% 8% 7%
1	L	297	 87% 5% 7%
1	X	297	 85% 7% 7%

2 Entry composition

There are 6 unique types of molecules in this entry. The entry contains 7155 atoms, of which 0 are hydrogens and 0 are deuteriums.

In the tables below, the ZeroOcc column contains the number of atoms modelled with zero occupancy, the AltConf column contains the number of residues with at least one atom in alternate conformation and the Trace column contains the number of residues modelled with at most 2 atoms.

- Molecule 1 is a protein called GcL lactonase.

Mol	Chain	Residues	Atoms					ZeroOcc	AltConf	Trace
			Total	C	N	O	S			
1	X	276	2237	1423	390	410	14	0	0	0
1	F	276	2237	1423	390	410	14	0	0	0
1	L	276	2237	1423	390	410	14	0	0	0

There are 45 discrepancies between the modelled and reference sequences:

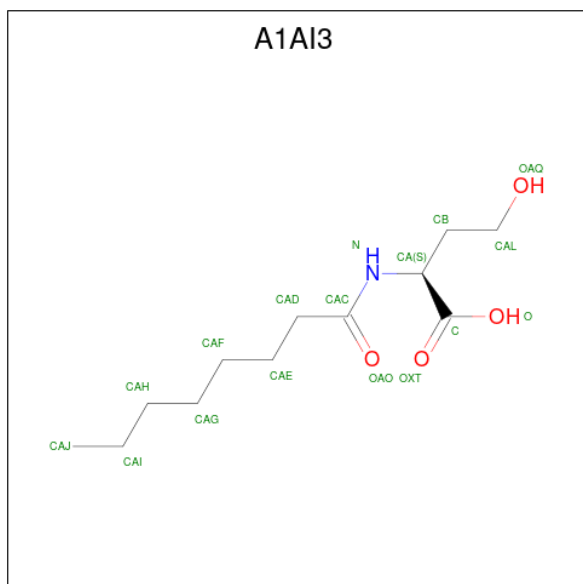
Chain	Residue	Modelled	Actual	Comment	Reference
X	-13	TRP	-	expression tag	UNP A0A023DFE8
X	-12	SER	-	expression tag	UNP A0A023DFE8
X	-11	HIS	-	expression tag	UNP A0A023DFE8
X	-10	PRO	-	expression tag	UNP A0A023DFE8
X	-9	GLN	-	expression tag	UNP A0A023DFE8
X	-8	PHE	-	expression tag	UNP A0A023DFE8
X	-7	GLU	-	expression tag	UNP A0A023DFE8
X	-6	LYS	-	expression tag	UNP A0A023DFE8
X	-5	GLU	-	expression tag	UNP A0A023DFE8
X	-4	ASN	-	expression tag	UNP A0A023DFE8
X	-3	LEU	-	expression tag	UNP A0A023DFE8
X	-2	TYR	-	expression tag	UNP A0A023DFE8
X	-1	PHE	-	expression tag	UNP A0A023DFE8
X	0	GLN	-	expression tag	UNP A0A023DFE8
X	1	SER	-	expression tag	UNP A0A023DFE8
F	-13	TRP	-	expression tag	UNP A0A023DFE8
F	-12	SER	-	expression tag	UNP A0A023DFE8
F	-11	HIS	-	expression tag	UNP A0A023DFE8
F	-10	PRO	-	expression tag	UNP A0A023DFE8
F	-9	GLN	-	expression tag	UNP A0A023DFE8
F	-8	PHE	-	expression tag	UNP A0A023DFE8
F	-7	GLU	-	expression tag	UNP A0A023DFE8
F	-6	LYS	-	expression tag	UNP A0A023DFE8

Continued on next page...

Continued from previous page...

Chain	Residue	Modelled	Actual	Comment	Reference
F	-5	GLU	-	expression tag	UNP A0A023DFE8
F	-4	ASN	-	expression tag	UNP A0A023DFE8
F	-3	LEU	-	expression tag	UNP A0A023DFE8
F	-2	TYR	-	expression tag	UNP A0A023DFE8
F	-1	PHE	-	expression tag	UNP A0A023DFE8
F	0	GLN	-	expression tag	UNP A0A023DFE8
F	1	SER	-	expression tag	UNP A0A023DFE8
L	-13	TRP	-	expression tag	UNP A0A023DFE8
L	-12	SER	-	expression tag	UNP A0A023DFE8
L	-11	HIS	-	expression tag	UNP A0A023DFE8
L	-10	PRO	-	expression tag	UNP A0A023DFE8
L	-9	GLN	-	expression tag	UNP A0A023DFE8
L	-8	PHE	-	expression tag	UNP A0A023DFE8
L	-7	GLU	-	expression tag	UNP A0A023DFE8
L	-6	LYS	-	expression tag	UNP A0A023DFE8
L	-5	GLU	-	expression tag	UNP A0A023DFE8
L	-4	ASN	-	expression tag	UNP A0A023DFE8
L	-3	LEU	-	expression tag	UNP A0A023DFE8
L	-2	TYR	-	expression tag	UNP A0A023DFE8
L	-1	PHE	-	expression tag	UNP A0A023DFE8
L	0	GLN	-	expression tag	UNP A0A023DFE8
L	1	SER	-	expression tag	UNP A0A023DFE8

- Molecule 2 is N-octanoyl-L-homoserine (three-letter code: A1AI3) (formula: $C_{12}H_{23}NO_4$).

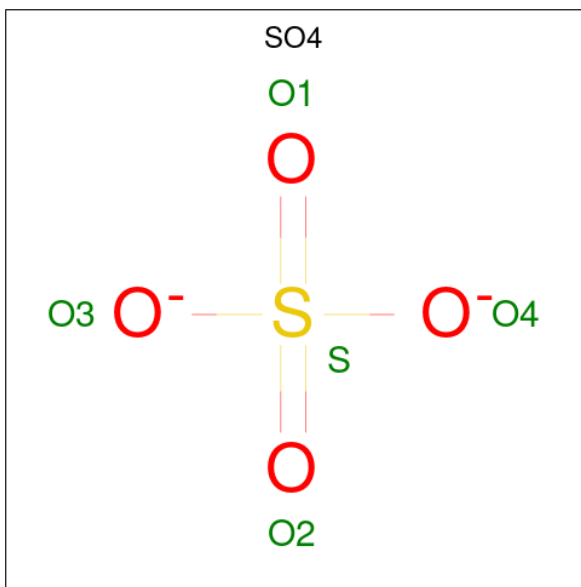


Mol	Chain	Residues	Atoms				ZeroOcc	AltConf
2	X	1	Total	C	N	O	0	0
			17	12	1	4		
2	F	1	Total	C	N	O	0	0
			17	12	1	4		
2	L	1	Total	C	N	O	0	0
			17	12	1	4		

- Molecule 3 is COBALT (II) ION (three-letter code: CO) (formula: Co) (labeled as "Ligand of Interest" by depositor).

Mol	Chain	Residues	Atoms		ZeroOcc	AltConf
3	X	1	Total	Co	0	0
			1	1		
3	F	1	Total	Co	0	0
			1	1		
3	L	1	Total	Co	0	0
			1	1		

- Molecule 4 is SULFATE ION (three-letter code: SO4) (formula: O₄S).



Mol	Chain	Residues	Atoms			ZeroOcc	AltConf
4	X	1	Total	O	S	0	0
			5	4	1		
4	X	1	Total	O	S	0	0
			5	4	1		
4	F	1	Total	O	S	0	0
			5	4	1		

Continued on next page...

Continued from previous page...

Mol	Chain	Residues	Atoms	ZeroOcc	AltConf
4	F	1	Total O S 5 4 1	0	0
4	L	1	Total O S 5 4 1	0	0

- Molecule 5 is FE (III) ION (three-letter code: FE) (formula: Fe) (labeled as "Ligand of Interest" by depositor).

Mol	Chain	Residues	Atoms	ZeroOcc	AltConf
5	X	1	Total Fe 1 1	0	0
5	F	1	Total Fe 1 1	0	0
5	L	1	Total Fe 1 1	0	0


- Molecule 6 is water.

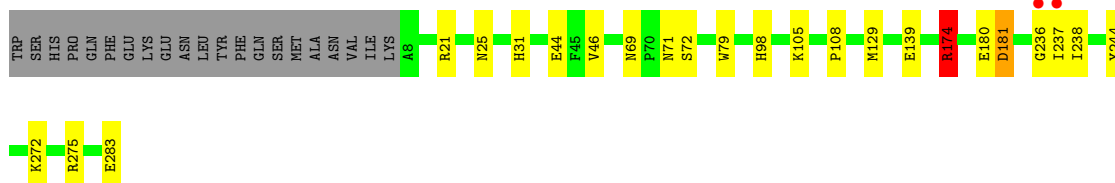
Mol	Chain	Residues	Atoms	ZeroOcc	AltConf
6	X	131	Total O 131 131	0	0
6	F	117	Total O 117 117	0	0
6	L	114	Total O 114 114	0	0

3 Residue-property plots [i](#)


These plots are drawn for all protein, RNA, DNA and oligosaccharide chains in the entry. The first graphic for a chain summarises the proportions of the various outlier classes displayed in the second graphic. The second graphic shows the sequence view annotated by issues in geometry and electron density. Residues are color-coded according to the number of geometric quality criteria for which they contain at least one outlier: green = 0, yellow = 1, orange = 2 and red = 3 or more. A red dot above a residue indicates a poor fit to the electron density ($RSRZ > 2$). Stretches of 2 or more consecutive residues without any outlier are shown as a green connector. Residues present in the sample, but not in the model, are shown in grey.

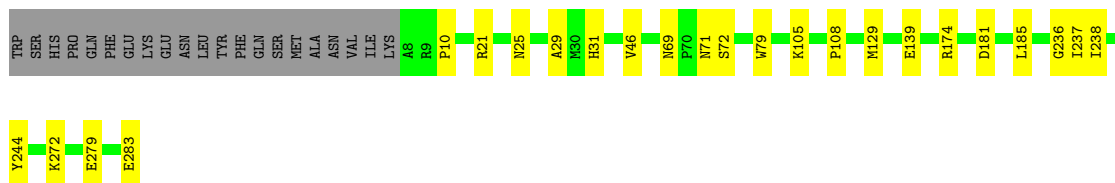
- Molecule 1: GcL lactonase

Chain X: 




- Molecule 1: GcL lactonase

Chain F: 



- Molecule 1: GcL lactonase

Chain L: 



4 Data and refinement statistics i

Property	Value	Source
Space group	C 1 2 1	Depositor
Cell constants a, b, c, α , β , γ	161.36Å 109.81Å 97.37Å 90.00° 116.35° 90.00°	Depositor
Resolution (Å)	74.13 – 1.85 74.13 – 1.85	Depositor EDS
% Data completeness (in resolution range)	95.9 (74.13-1.85) 95.3 (74.13-1.85)	Depositor EDS
R_{merge}	(Not available)	Depositor
R_{sym}	(Not available)	Depositor
$\langle I/\sigma(I) \rangle$ ¹	2.21 (at 1.84Å)	Xtrriage
Refinement program	REFMAC 5.8.0266	Depositor
R, R_{free}	0.187 , 0.215 0.195 , 0.220	Depositor DCC
R_{free} test set	6211 reflections (4.89%)	wwPDB-VP
Wilson B-factor (Å ²)	38.4	Xtrriage
Anisotropy	0.065	Xtrriage
Bulk solvent k_{sol} (e/Å ³), B_{sol} (Å ²)	0.33 , 28.8	EDS
L-test for twinning ²	$\langle L \rangle = 0.51$, $\langle L^2 \rangle = 0.34$	Xtrriage
Estimated twinning fraction	0.458 for $-1/2^*h+1/2^*k+1, 1/2^*h-1/2^*k+1, 1/2^*h+1/2^*k$ 0.458 for $-1/2^*h-1/2^*k+1, -1/2^*h-1/2^*k-1, 1/2^*h-1/2^*k$	Xtrriage
F_o, F_c correlation	0.97	EDS
Total number of atoms	7155	wwPDB-VP
Average B, all atoms (Å ²)	43.0	wwPDB-VP

Xtrriage's analysis on translational NCS is as follows: *The largest off-origin peak in the Patterson function is 3.42% of the height of the origin peak. No significant pseudotranslation is detected.*

¹Intensities estimated from amplitudes.

²Theoretical values of $\langle |L| \rangle$, $\langle L^2 \rangle$ for acentric reflections are 0.5, 0.333 respectively for untwinned datasets, and 0.375, 0.2 for perfectly twinned datasets.

5 Model quality i

5.1 Standard geometry i

Bond lengths and bond angles in the following residue types are not validated in this section: CO, FE, SO4, A1AI3

The Z score for a bond length (or angle) is the number of standard deviations the observed value is removed from the expected value. A bond length (or angle) with $|Z| > 5$ is considered an outlier worth inspection. RMSZ is the root-mean-square of all Z scores of the bond lengths (or angles).

Mol	Chain	Bond lengths		Bond angles	
		RMSZ	# $ Z > 5$	RMSZ	# $ Z > 5$
1	F	0.78	2/2300 (0.1%)	0.89	1/3122 (0.0%)
1	L	0.79	1/2300 (0.0%)	0.88	2/3122 (0.1%)
1	X	0.77	1/2300 (0.0%)	0.89	5/3122 (0.2%)
All	All	0.78	4/6900 (0.1%)	0.88	8/9366 (0.1%)

All (4) bond length outliers are listed below:

Mol	Chain	Res	Type	Atoms	Z	Observed(Å)	Ideal(Å)
1	L	139	GLU	CD-OE2	8.04	1.34	1.25
1	F	139	GLU	CD-OE2	7.67	1.34	1.25
1	F	279	GLU	CD-OE2	5.83	1.32	1.25
1	X	139	GLU	CD-OE2	5.64	1.31	1.25

All (8) bond angle outliers are listed below:

Mol	Chain	Res	Type	Atoms	Z	Observed(°)	Ideal(°)
1	L	283	GLU	CA-C-O	-9.44	100.28	120.10
1	F	283	GLU	CA-C-O	-8.76	101.71	120.10
1	X	283	GLU	CA-C-O	-8.04	103.21	120.10
1	X	275	ARG	NE-CZ-NH1	5.55	123.08	120.30
1	X	174	ARG	NE-CZ-NH1	5.40	123.00	120.30
1	X	174	ARG	NE-CZ-NH2	-5.39	117.60	120.30
1	X	283	GLU	CB-CA-C	5.37	121.13	110.40
1	L	275	ARG	NE-CZ-NH1	5.09	122.85	120.30

There are no chirality outliers.

There are no planarity outliers.

5.2 Too-close contacts [i](#)

In the following table, the Non-H and H(model) columns list the number of non-hydrogen atoms and hydrogen atoms in the chain respectively. The H(added) column lists the number of hydrogen atoms added and optimized by MolProbity. The Clashes column lists the number of clashes within the asymmetric unit, whereas Symm-Clashes lists symmetry-related clashes.

Mol	Chain	Non-H	H(model)	H(added)	Clashes	Symm-Clashes
1	F	2237	0	2151	10	0
1	L	2237	0	2151	9	0
1	X	2237	0	2151	11	0
2	F	17	0	0	1	0
2	L	17	0	0	1	0
2	X	17	0	0	1	0
3	F	1	0	0	0	0
3	L	1	0	0	0	0
3	X	1	0	0	0	0
4	F	10	0	0	0	0
4	L	5	0	0	1	0
4	X	10	0	0	0	0
5	F	1	0	0	0	0
5	L	1	0	0	0	0
5	X	1	0	0	0	0
6	F	117	0	0	0	1
6	L	114	0	0	1	0
6	X	131	0	0	1	1
All	All	7155	0	6453	33	2

The all-atom clashscore is defined as the number of clashes found per 1000 atoms (including hydrogen atoms). The all-atom clashscore for this structure is 2.

All (33) close contacts within the same asymmetric unit are listed below, sorted by their clash magnitude.

Atom-1	Atom-2	Interatomic distance (Å)	Clash overlap (Å)
2:L:301:A1AI3:OAQ	2:L:301:A1AI3:OXT	2.05	0.73
1:F:69:ASN:HD22	1:F:71:ASN:H	1.44	0.63
1:X:69:ASN:HD22	1:X:71:ASN:H	1.51	0.58
1:L:69:ASN:HD22	1:L:71:ASN:H	1.53	0.57
1:L:72:SER:HB3	1:L:79:TRP:CE2	2.40	0.56
1:F:25:ASN:ND2	1:F:31:HIS:HD2	2.05	0.54
1:L:238:ILE:HD11	1:L:244:TYR:CG	2.43	0.54
1:F:72:SER:HB3	1:F:79:TRP:CE2	2.44	0.53
1:X:72:SER:HB3	1:X:79:TRP:CE2	2.44	0.53

Continued on next page...

Continued from previous page...

Atom-1	Atom-2	Interatomic distance (Å)	Clash overlap (Å)
1:F:69:ASN:ND2	1:F:71:ASN:H	2.07	0.52
1:X:69:ASN:ND2	1:X:71:ASN:H	2.12	0.47
1:L:69:ASN:ND2	1:L:71:ASN:H	2.12	0.47
1:F:21:ARG:HA	1:F:46:VAL:O	2.14	0.47
1:L:253:ARG:NH2	4:L:304:SO4:O1	2.38	0.47
1:X:98:HIS:HB3	6:X:515:HOH:O	2.15	0.46
1:X:21:ARG:HA	1:X:46:VAL:O	2.15	0.46
1:F:108:PRO:HG3	1:F:129:MET:HE3	1.97	0.46
1:X:25:ASN:ND2	1:X:31:HIS:HD2	2.14	0.46
1:L:25:ASN:ND2	1:L:31:HIS:HD2	2.13	0.45
1:F:29:ALA:HB2	1:F:236:GLY:HA2	1.99	0.45
1:L:21:ARG:HA	1:L:46:VAL:O	2.17	0.44
1:F:185:LEU:HD23	1:F:185:LEU:HA	1.89	0.43
1:L:238:ILE:HD11	1:L:244:TYR:CB	2.48	0.43
1:X:174:ARG:NH2	1:X:180:GLU:OE2	2.51	0.42
1:X:180:GLU:O	1:X:181:ASP:O	2.37	0.42
1:F:238:ILE:HD11	1:F:244:TYR:CG	2.54	0.42
1:L:283:GLU:HB2	6:L:458:HOH:O	2.20	0.42
1:X:25:ASN:O	1:X:236:GLY:HA3	2.20	0.41
1:X:238:ILE:HD11	1:X:244:TYR:CG	2.55	0.41
1:F:25:ASN:O	1:F:236:GLY:HA3	2.21	0.41
2:F:301:A1AI3:OAQ	2:F:301:A1AI3:C	2.69	0.41
1:X:108:PRO:HG3	1:X:129:MET:HE3	2.04	0.40
2:X:301:A1AI3:OAQ	2:X:301:A1AI3:C	2.69	0.40

All (2) symmetry-related close contacts are listed below. The label for Atom-2 includes the symmetry operator and encoded unit-cell translations to be applied.

Atom-1	Atom-2	Interatomic distance (Å)	Clash overlap (Å)
6:F:464:HOH:O	6:F:464:HOH:O[2_556]	1.72	0.48
6:X:518:HOH:O	6:X:518:HOH:O[2_555]	2.16	0.04

5.3 Torsion angles [i](#)

5.3.1 Protein backbone [i](#)

In the following table, the Percentiles column shows the percent Ramachandran outliers of the chain as a percentile score with respect to all X-ray entries followed by that with respect to entries of similar resolution.

The Analysed column shows the number of residues for which the backbone conformation was analysed, and the total number of residues.

Mol	Chain	Analysed	Favoured	Allowed	Outliers	Percentiles	
1	F	274/297 (92%)	263 (96%)	10 (4%)	1 (0%)	30	18
1	L	274/297 (92%)	264 (96%)	10 (4%)	0	100	100
1	X	274/297 (92%)	262 (96%)	11 (4%)	1 (0%)	30	18
All	All	822/891 (92%)	789 (96%)	31 (4%)	2 (0%)	44	32

All (2) Ramachandran outliers are listed below:

Mol	Chain	Res	Type
1	X	181	ASP
1	F	181	ASP

5.3.2 Protein sidechains [i](#)

In the following table, the Percentiles column shows the percent sidechain outliers of the chain as a percentile score with respect to all X-ray entries followed by that with respect to entries of similar resolution.

The Analysed column shows the number of residues for which the sidechain conformation was analysed, and the total number of residues.

Mol	Chain	Analysed	Rotameric	Outliers	Percentiles	
1	F	236/256 (92%)	231 (98%)	5 (2%)	48	34
1	L	236/256 (92%)	233 (99%)	3 (1%)	65	55
1	X	236/256 (92%)	231 (98%)	5 (2%)	48	34
All	All	708/768 (92%)	695 (98%)	13 (2%)	54	41

All (13) residues with a non-rotameric sidechain are listed below:

Mol	Chain	Res	Type
1	X	44	GLU
1	X	105	LYS
1	X	174	ARG
1	X	237	ILE
1	X	272	LYS
1	F	10	PRO
1	F	105	LYS
1	F	174	ARG

Continued on next page...

Continued from previous page...

Mol	Chain	Res	Type
1	F	237	ILE
1	F	272	LYS
1	L	223	TYR
1	L	237	ILE
1	L	272	LYS

Sometimes sidechains can be flipped to improve hydrogen bonding and reduce clashes. All (18) such sidechains are listed below:

Mol	Chain	Res	Type
1	X	25	ASN
1	X	31	HIS
1	X	37	HIS
1	X	69	ASN
1	X	71	ASN
1	X	132	ASN
1	F	25	ASN
1	F	31	HIS
1	F	69	ASN
1	F	71	ASN
1	F	85	GLN
1	F	132	ASN
1	F	182	ASN
1	L	25	ASN
1	L	31	HIS
1	L	69	ASN
1	L	71	ASN
1	L	132	ASN

5.3.3 RNA [i](#)

There are no RNA molecules in this entry.

5.4 Non-standard residues in protein, DNA, RNA chains [i](#)

There are no non-standard protein/DNA/RNA residues in this entry.

5.5 Carbohydrates [i](#)

There are no oligosaccharides in this entry.

5.6 Ligand geometry

Of 14 ligands modelled in this entry, 6 are monoatomic - leaving 8 for Mogul analysis.

In the following table, the Counts columns list the number of bonds (or angles) for which Mogul statistics could be retrieved, the number of bonds (or angles) that are observed in the model and the number of bonds (or angles) that are defined in the Chemical Component Dictionary. The Link column lists molecule types, if any, to which the group is linked. The Z score for a bond length (or angle) is the number of standard deviations the observed value is removed from the expected value. A bond length (or angle) with $|Z| > 2$ is considered an outlier worth inspection. RMSZ is the root-mean-square of all Z scores of the bond lengths (or angles).

Mol	Type	Chain	Res	Link	Bond lengths			Bond angles		
					Counts	RMSZ	# Z > 2	Counts	RMSZ	# Z > 2
4	SO4	X	303	-	4,4,4	0.21	0	6,6,6	0.24	0
4	SO4	X	304	-	4,4,4	0.31	0	6,6,6	0.08	0
2	A1AI3	X	301	5,3	16,16,16	0.82	1 (6%)	18,18,18	1.42	3 (16%)
2	A1AI3	L	301	5,3	16,16,16	0.64	0	18,18,18	1.23	3 (16%)
4	SO4	F	304	-	4,4,4	0.26	0	6,6,6	0.13	0
4	SO4	F	305	-	4,4,4	0.29	0	6,6,6	0.07	0
2	A1AI3	F	301	5,3	16,16,16	0.76	0	18,18,18	1.62	5 (27%)
4	SO4	L	304	-	4,4,4	0.27	0	6,6,6	0.17	0

In the following table, the Chirals column lists the number of chiral outliers, the number of chiral centers analysed, the number of these observed in the model and the number defined in the Chemical Component Dictionary. Similar counts are reported in the Torsion and Rings columns. '-' means no outliers of that kind were identified.

Mol	Type	Chain	Res	Link	Chirals	Torsions	Rings
2	A1AI3	F	301	5,3	-	7/18/18/18	-
2	A1AI3	X	301	5,3	-	4/18/18/18	-
2	A1AI3	L	301	5,3	-	10/18/18/18	-

All (1) bond length outliers are listed below:

Mol	Chain	Res	Type	Atoms	Z	Observed(Å)	Ideal(Å)
2	X	301	A1AI3	O-C	-2.10	1.23	1.30

All (11) bond angle outliers are listed below:

Mol	Chain	Res	Type	Atoms	Z	Observed(°)	Ideal(°)
2	X	301	A1AI3	CAL-CB-CA	-3.53	108.19	113.53
2	F	301	A1AI3	CA-N-CAC	3.18	129.66	121.68

Continued on next page...

Continued from previous page...

Mol	Chain	Res	Type	Atoms	Z	Observed(°)	Ideal(°)
2	L	301	A1AI3	OXT-C-CA	-2.98	112.65	122.26
2	X	301	A1AI3	CA-N-CAC	2.87	128.87	121.68
2	F	301	A1AI3	OAO-CAC-N	2.76	127.63	122.95
2	F	301	A1AI3	CAL-CB-CA	-2.69	109.47	113.53
2	L	301	A1AI3	O-C-CA	2.24	121.10	113.51
2	F	301	A1AI3	OXT-C-CA	-2.21	115.13	122.26
2	F	301	A1AI3	OAO-CAC-CAD	-2.19	118.04	122.02
2	X	301	A1AI3	OAO-CAC-N	2.16	126.60	122.95
2	L	301	A1AI3	CAE-CAD-CAC	-2.05	107.50	113.19

There are no chirality outliers.

All (21) torsion outliers are listed below:

Mol	Chain	Res	Type	Atoms
2	L	301	A1AI3	C-CA-CB-CAL
2	L	301	A1AI3	CAC-CAD-CAE-CAF
2	X	301	A1AI3	CAC-CAD-CAE-CAF
2	L	301	A1AI3	N-CA-CB-CAL
2	F	301	A1AI3	CAC-CAD-CAE-CAF
2	L	301	A1AI3	CAE-CAF-CAG-CAH
2	X	301	A1AI3	CAF-CAG-CAH-CAI
2	F	301	A1AI3	CAF-CAG-CAH-CAI
2	L	301	A1AI3	CAF-CAG-CAH-CAI
2	L	301	A1AI3	CAD-CAE-CAF-CAG
2	X	301	A1AI3	CAE-CAF-CAG-CAH
2	L	301	A1AI3	OXT-C-CA-N
2	L	301	A1AI3	O-C-CA-N
2	F	301	A1AI3	CAE-CAF-CAG-CAH
2	X	301	A1AI3	CAG-CAH-CAI-CAJ
2	L	301	A1AI3	CAG-CAH-CAI-CAJ
2	L	301	A1AI3	OXT-C-CA-CB
2	F	301	A1AI3	CAG-CAH-CAI-CAJ
2	F	301	A1AI3	OXT-C-CA-N
2	F	301	A1AI3	CAD-CAE-CAF-CAG
2	F	301	A1AI3	O-C-CA-N

There are no ring outliers.

4 monomers are involved in 4 short contacts:

Mol	Chain	Res	Type	Clashes	Symm-Clashes
2	X	301	A1AI3	1	0

Continued on next page...

Continued from previous page...

Mol	Chain	Res	Type	Clashes	Symm-Clashes
2	L	301	A1AI3	1	0
2	F	301	A1AI3	1	0
4	L	304	SO4	1	0

5.7 Other polymers [i](#)

There are no such residues in this entry.

5.8 Polymer linkage issues [i](#)

There are no chain breaks in this entry.

6 Fit of model and data [i](#)

6.1 Protein, DNA and RNA chains [i](#)

In the following table, the column labelled '#RSRZ > 2' contains the number (and percentage) of RSRZ outliers, followed by percent RSRZ outliers for the chain as percentile scores relative to all X-ray entries and entries of similar resolution. The OWAB column contains the minimum, median, 95th percentile and maximum values of the occupancy-weighted average B-factor per residue. The column labelled 'Q < 0.9' lists the number of (and percentage) of residues with an average occupancy less than 0.9.

Mol	Chain	Analysed	<RSRZ>	#RSRZ>2	OWAB(Å ²)	Q<0.9
1	F	276/297 (92%)	-0.69	0 100 100	30, 40, 63, 80	0
1	L	276/297 (92%)	-0.63	0 100 100	31, 41, 63, 76	0
1	X	276/297 (92%)	-0.61	2 (0%) 84 86	31, 40, 62, 76	0
All	All	828/891 (92%)	-0.65	2 (0%) 92 93	30, 41, 63, 80	0

All (2) RSRZ outliers are listed below:

Mol	Chain	Res	Type	RSRZ
1	X	236	GLY	2.8
1	X	237	ILE	2.1

6.2 Non-standard residues in protein, DNA, RNA chains [i](#)

There are no non-standard protein/DNA/RNA residues in this entry.

6.3 Carbohydrates [i](#)

There are no monosaccharides in this entry.

6.4 Ligands [i](#)

In the following table, the Atoms column lists the number of modelled atoms in the group and the number defined in the chemical component dictionary. The B-factors column lists the minimum, median, 95th percentile and maximum values of B factors of atoms in the group. The column labelled 'Q < 0.9' lists the number of atoms with occupancy less than 0.9.

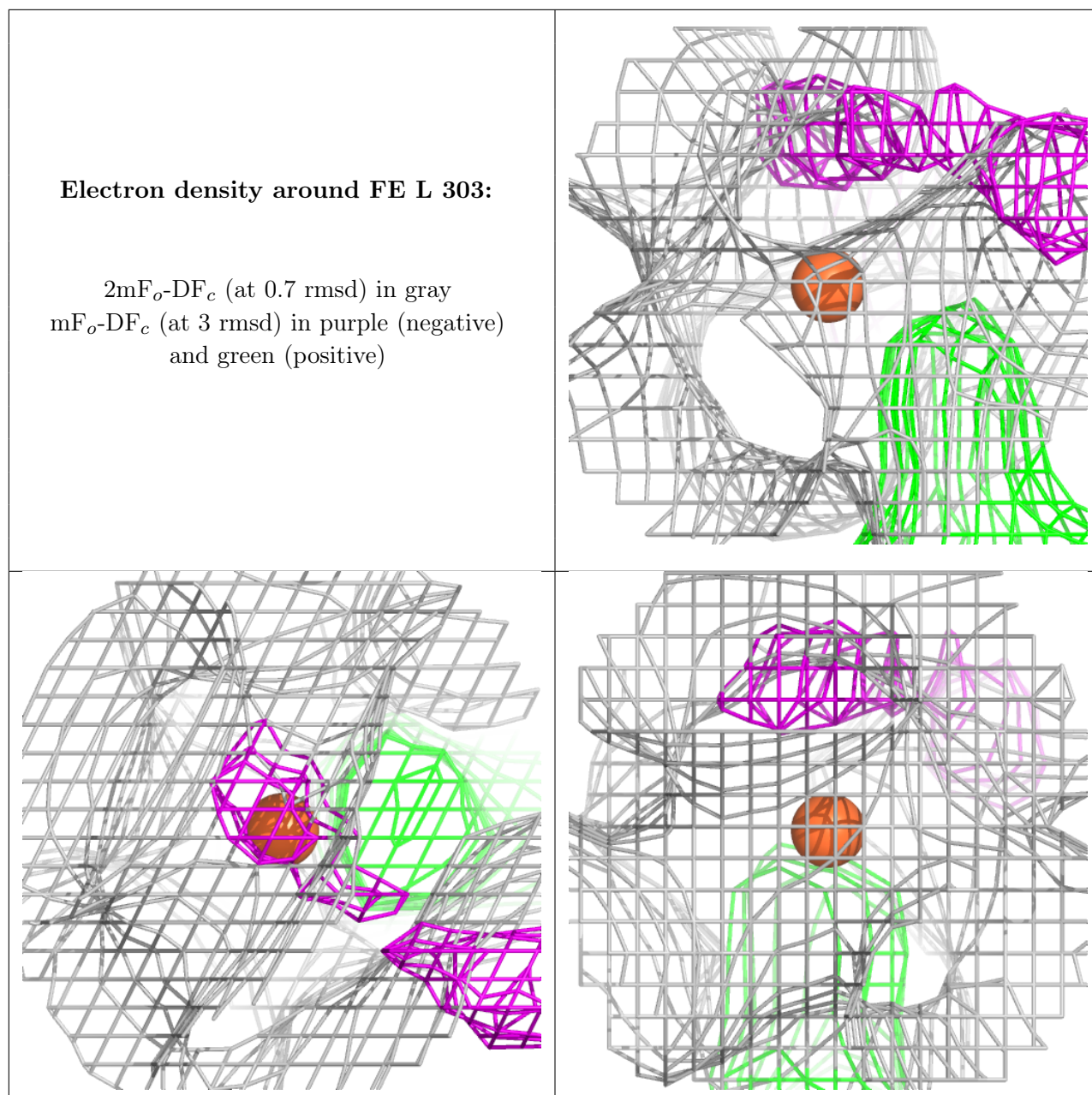
Mol	Type	Chain	Res	Atoms	RSCC	RSR	B-factors(Å ²)	Q<0.9
2	A1AI3	F	301	17/17	0.96	0.13	33,53,61,62	17

Continued on next page...

Continued from previous page...

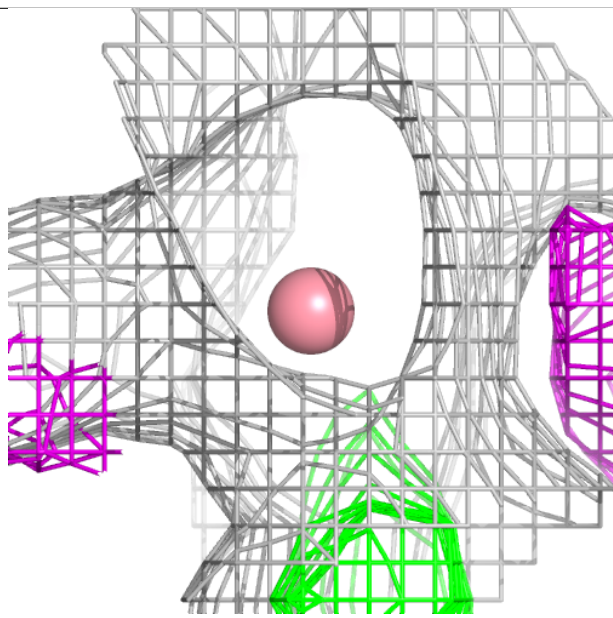
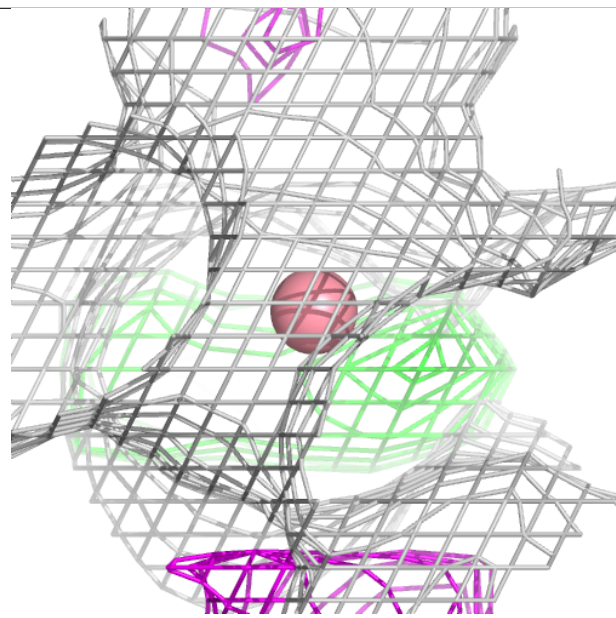
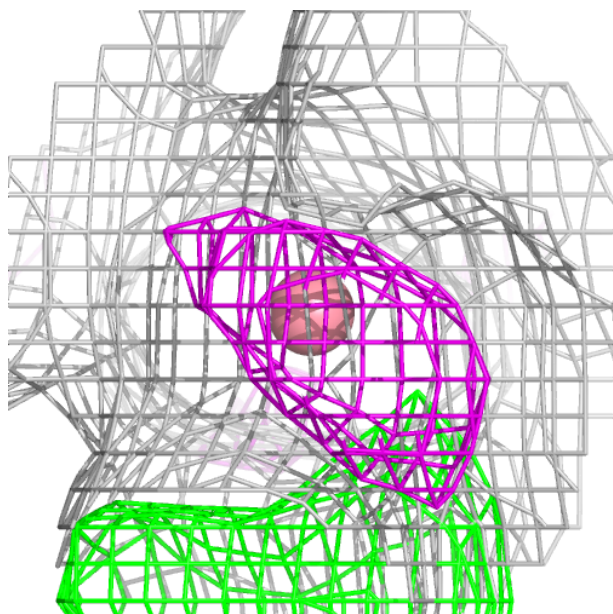
Mol	Type	Chain	Res	Atoms	RSCC	RSR	B-factors(\AA^2)	Q<0.9
4	SO4	X	303	5/5	0.96	0.07	64,71,81,95	0
4	SO4	X	304	5/5	0.96	0.17	154,206,211,222	0
4	SO4	F	305	5/5	0.96	0.17	151,176,191,194	0
4	SO4	F	304	5/5	0.97	0.06	69,71,78,94	0
2	A1AI3	X	301	17/17	0.97	0.10	42,51,65,65	17
2	A1AI3	L	301	17/17	0.98	0.09	36,55,61,67	17
4	SO4	L	304	5/5	0.98	0.06	69,74,83,90	0
5	FE	L	303	1/1	0.99	0.02	37,37,37,37	0
3	CO	X	302	1/1	1.00	0.01	35,35,35,35	0
3	CO	F	302	1/1	1.00	0.01	32,32,32,32	0
5	FE	X	305	1/1	1.00	0.03	36,36,36,36	0
5	FE	F	303	1/1	1.00	0.01	37,37,37,37	0
3	CO	L	302	1/1	1.00	0.02	34,34,34,34	0

The following is a graphical depiction of the model fit to experimental electron density of all instances of the Ligand of Interest. In addition, ligands with molecular weight > 250 and outliers as shown on the geometry validation Tables will also be included. Each fit is shown from different orientation to approximate a three-dimensional view.



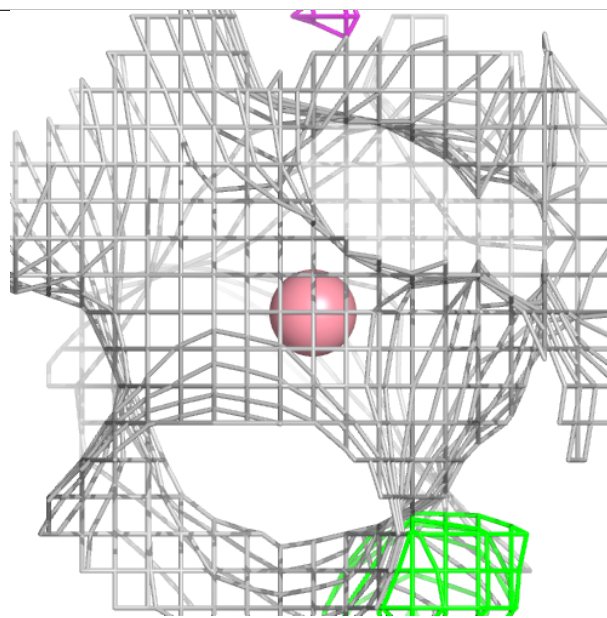
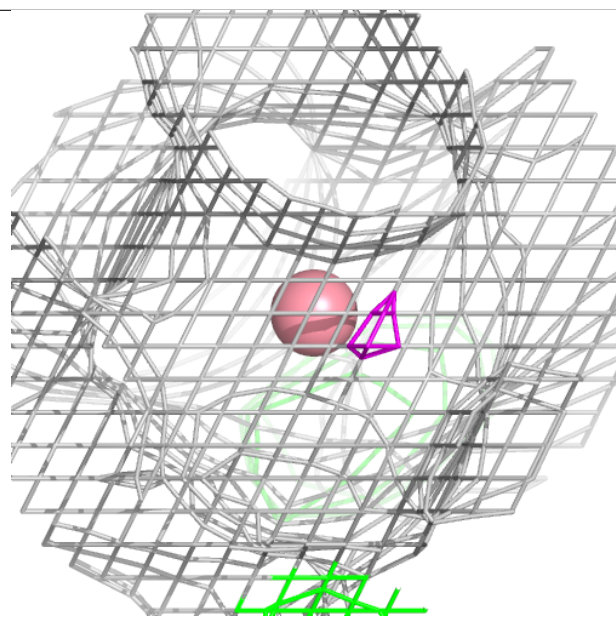
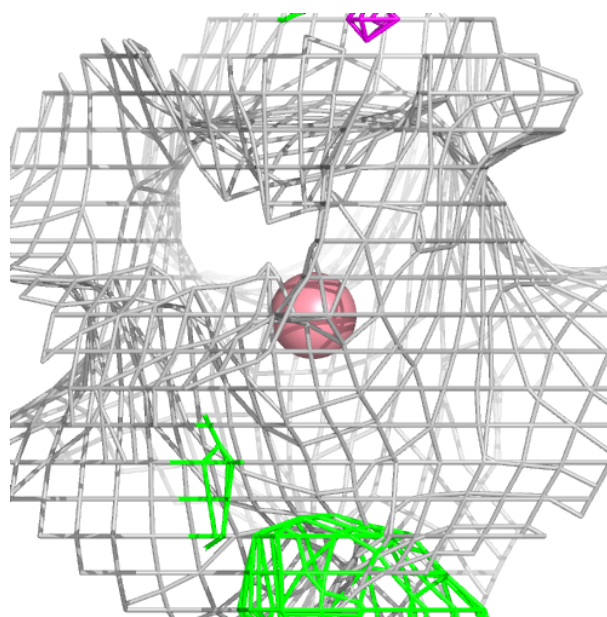
Electron density around CO X 302:

$2mF_o-DF_c$ (at 0.7 rmsd) in gray
 mF_o-DF_c (at 3 rmsd) in purple (negative)
and green (positive)



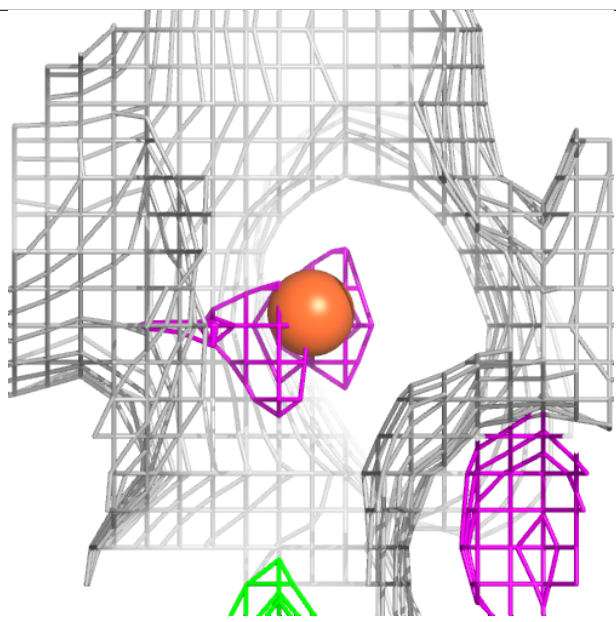
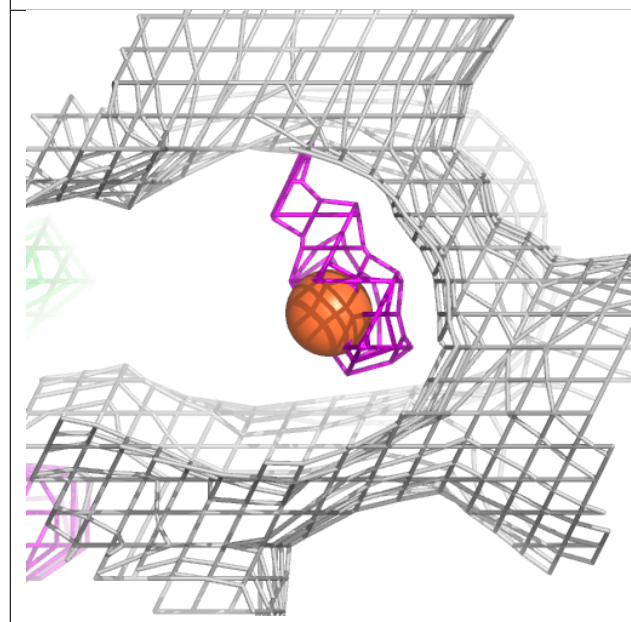
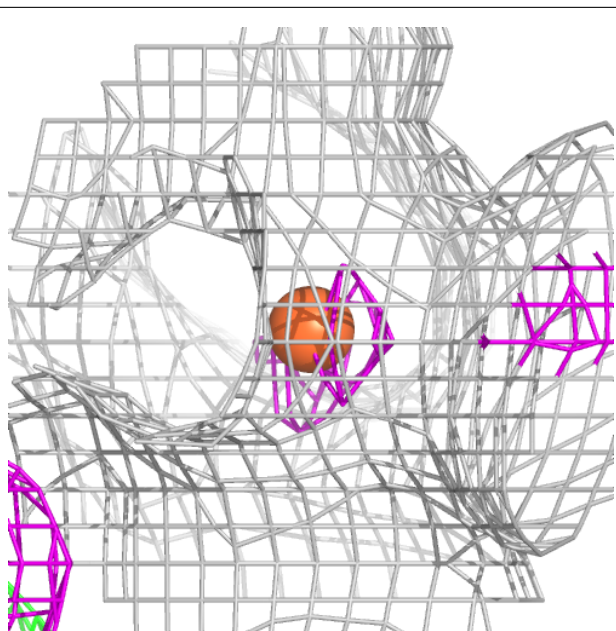
Electron density around CO F 302:

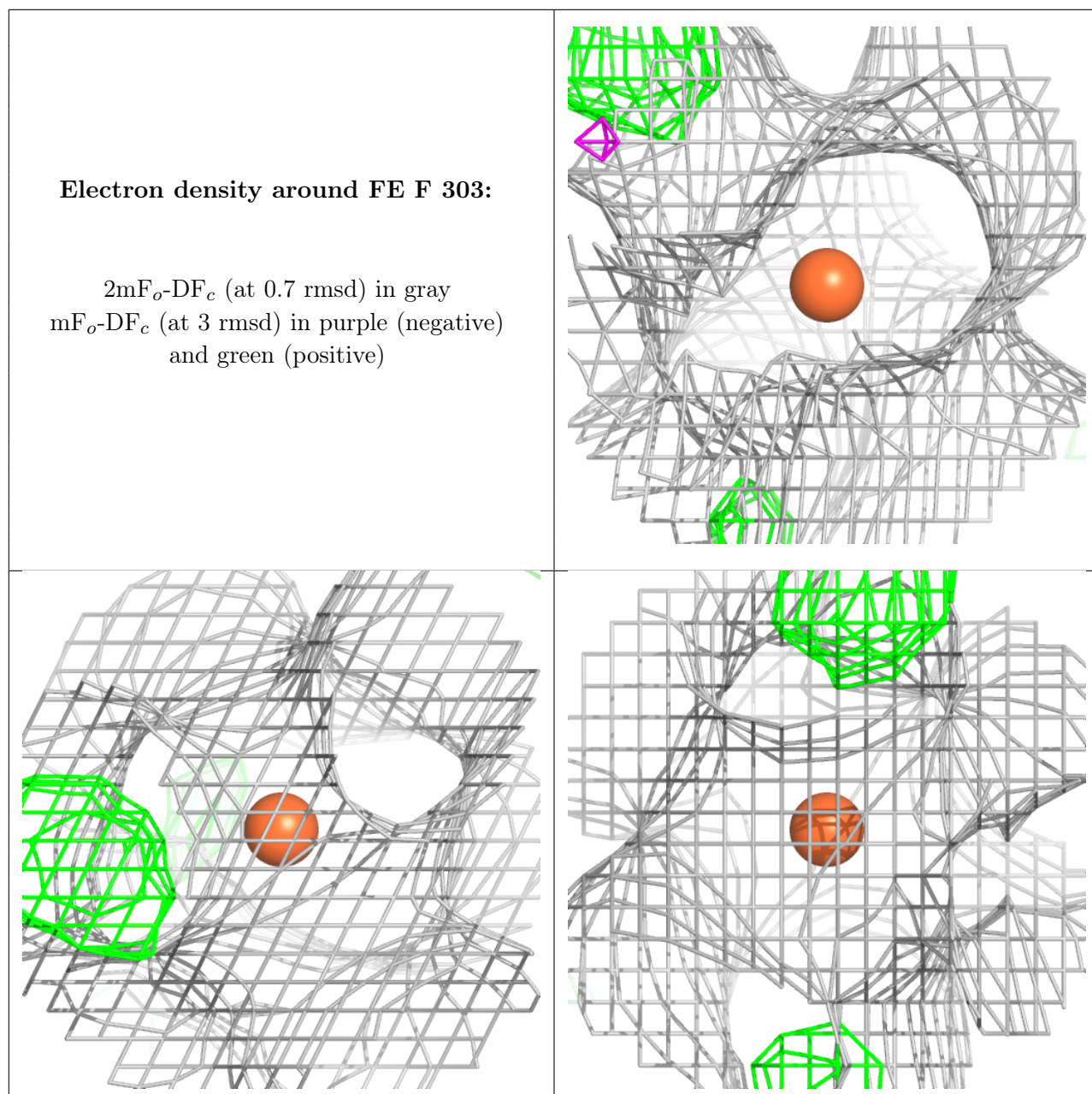
$2mF_o-DF_c$ (at 0.7 rmsd) in gray
 mF_o-DF_c (at 3 rmsd) in purple (negative)
and green (positive)

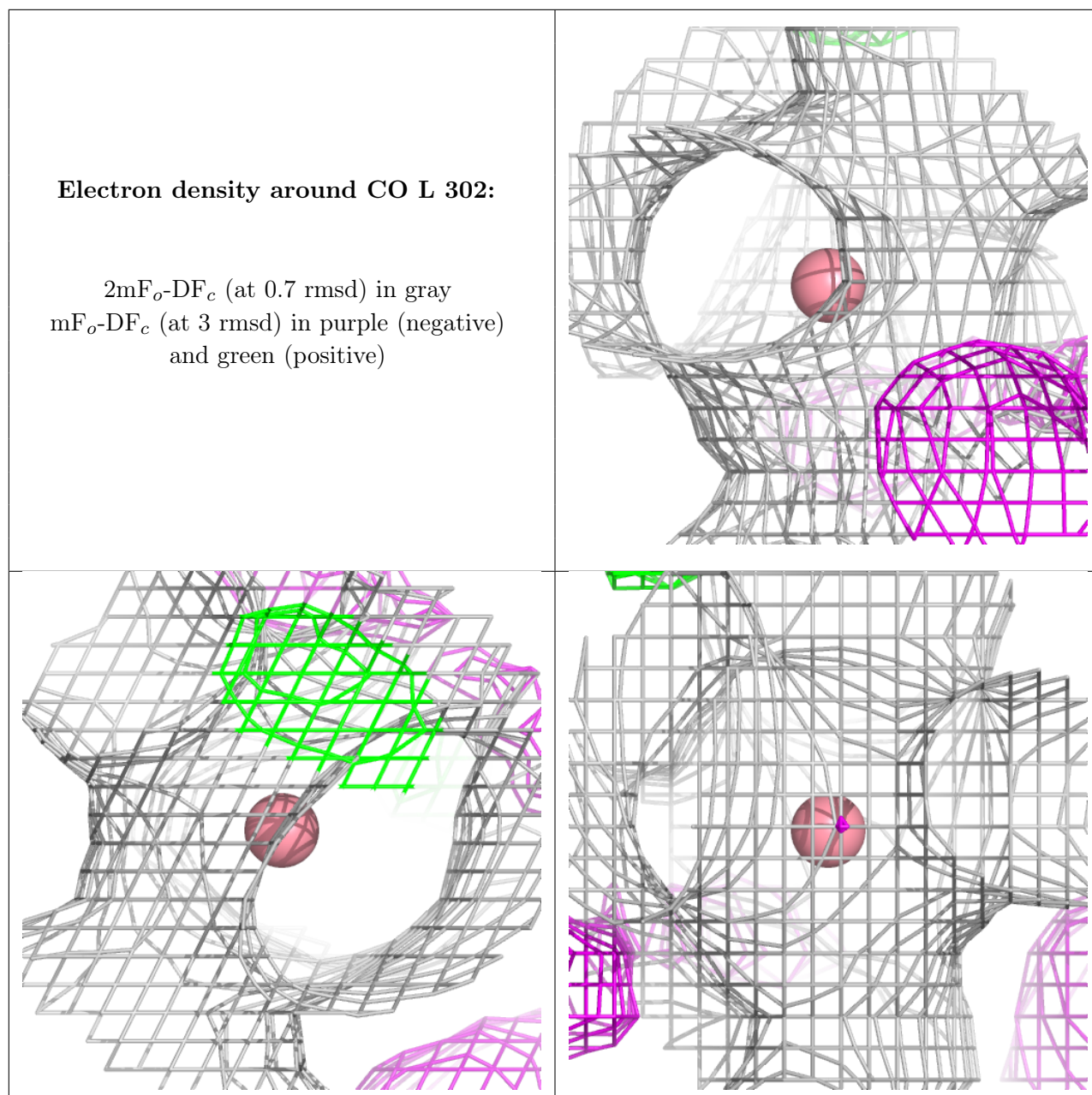


Electron density around FE X 305:

$2mF_o-DF_c$ (at 0.7 rmsd) in gray
 mF_o-DF_c (at 3 rmsd) in purple (negative)
and green (positive)







6.5 Other polymers [i](#)

There are no such residues in this entry.