



Full wwPDB X-ray Structure Validation Report ⓘ

Mar 8, 2018 – 11:53 pm GMT

PDB ID : 2B5I
Title : cytokine receptor complex
Authors : Wang, X.; Rickert, M.; Garcia, K.C.
Deposited on : 2005-09-28
Resolution : 2.30 Å(reported)

This is a Full wwPDB X-ray Structure Validation Report for a publicly released PDB entry.

We welcome your comments at validation@mail.wwpdb.org

A user guide is available at

<https://www.wwpdb.org/validation/2017/XrayValidationReportHelp>

with specific help available everywhere you see the ⓘ symbol.

The following versions of software and data (see [references ⓘ](#)) were used in the production of this report:

MolProbity : 4.02b-467
Mogul : 1.7.3 (157068), CSD as539be (2018)
Xtrriage (Phenix) : 1.13
EDS : trunk30967
Percentile statistics : 20171227.v01 (using entries in the PDB archive December 27th 2017)
Refmac : 5.8.0158
CCP4 : 7.0 (Gargrove)
Ideal geometry (proteins) : Engh & Huber (2001)
Ideal geometry (DNA, RNA) : Parkinson et al. (1996)
Validation Pipeline (wwPDB-VP) : trunk30967

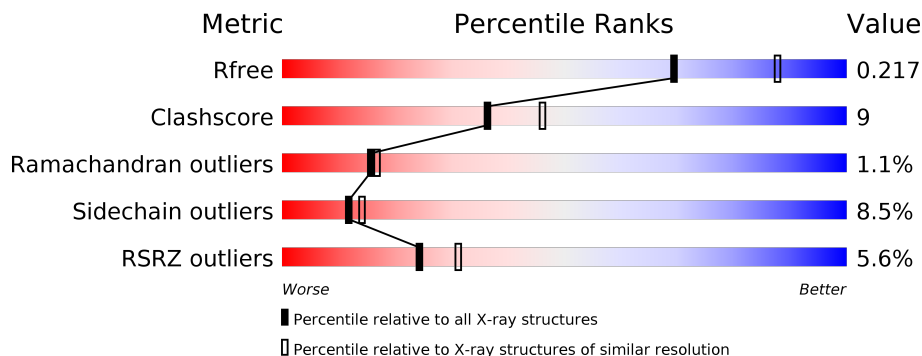
1 Overall quality at a glance

The following experimental techniques were used to determine the structure:

X-RAY DIFFRACTION

The reported resolution of this entry is 2.30 Å.

Percentile scores (ranging between 0-100) for global validation metrics of the entry are shown in the following graphic. The table shows the number of entries on which the scores are based.



Metric	Whole archive (#Entries)	Similar resolution (#Entries, resolution range(Å))
R_{free}	111664	4477 (2.30-2.30)
Clashscore	122126	5072 (2.30-2.30)
Ramachandran outliers	120053	5022 (2.30-2.30)
Sidechain outliers	120020	5021 (2.30-2.30)
RSRZ outliers	108989	4374 (2.30-2.30)

The table below summarises the geometric issues observed across the polymeric chains and their fit to the electron density. The red, orange, yellow and green segments on the lower bar indicate the fraction of residues that contain outliers for ≥ 3 , 2, 1 and 0 types of geometric quality criteria. A grey segment represents the fraction of residues that are not modelled. The numeric value for each fraction is indicated below the corresponding segment, with a dot representing fractions $\leq 5\%$. The upper red bar (where present) indicates the fraction of residues that have poor fit to the electron density. The numeric value is given above the bar.

Mol	Chain	Length	Quality of chain
1	A	133	
2	B	214	
3	C	199	
4	D	217	

2 Entry composition

There are 6 unique types of molecules in this entry. The entry contains 5463 atoms, of which 0 are hydrogens and 0 are deuteriums.

In the tables below, the ZeroOcc column contains the number of atoms modelled with zero occupancy, the AltConf column contains the number of residues with at least one atom in alternate conformation and the Trace column contains the number of residues modelled with at most 2 atoms.

- Molecule 1 is a protein called Interleukin-2.

Mol	Chain	Residues	Atoms					ZeroOcc	AltConf	Trace
			Total	C	N	O	S			
1	A	120	983	634	161	181	7	0	0	0

- Molecule 2 is a protein called Interleukin-2 receptor beta chain.

Mol	Chain	Residues	Atoms					ZeroOcc	AltConf	Trace
			Total	C	N	O	S			
2	B	196	1618	1034	286	288	10	0	0	0

There are 3 discrepancies between the modelled and reference sequences:

Chain	Residue	Modelled	Actual	Comment	Reference
B	3	GLN	ASN	ENGINEERED	UNP P14784
B	17	GLN	ASN	ENGINEERED	UNP P14784
B	45	GLN	ASN	ENGINEERED	UNP P14784

- Molecule 3 is a protein called Cytokine receptor common gamma chain.

Mol	Chain	Residues	Atoms					ZeroOcc	AltConf	Trace
			Total	C	N	O	S			
3	C	191	1630	1037	290	295	8	0	0	0

There is a discrepancy between the modelled and reference sequences:

Chain	Residue	Modelled	Actual	Comment	Reference
C	53	GLN	ASN	ENGINEERED	UNP P31785

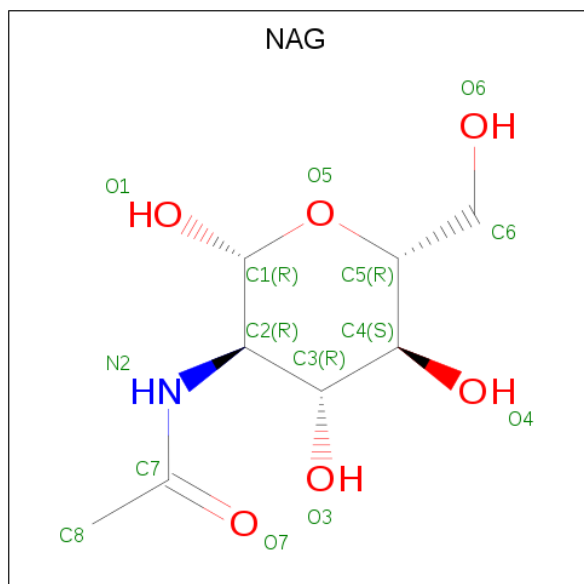
- Molecule 4 is a protein called Interleukin-2 receptor alpha chain.

Mol	Chain	Residues	Atoms					ZeroOcc	AltConf	Trace
			Total	C	N	O	S			
4	D	122	977	607	175	180	15	0	0	0

There is a discrepancy between the modelled and reference sequences:

Chain	Residue	Modelled	Actual	Comment	Reference
D	68	GLN	ASN	ENGINEERED	UNP P01589

- Molecule 5 is N-ACETYL-D-GLUCOSAMINE (three-letter code: NAG) (formula: $C_8H_{15}NO_6$).



Mol	Chain	Residues	Atoms				ZeroOcc	AltConf
			Total	C	N	O		
5	B	1	Total	C	N	O	0	0
			14	8	1	5		
5	B	1	Total	C	N	O	0	0
			14	8	1	5		
5	C	1	Total	C	N	O	0	0
			14	8	1	5		
5	C	1	Total	C	N	O	0	0
			14	8	1	5		
5	C	1	Total	C	N	O	0	0
			14	8	1	5		

- Molecule 6 is water.

Mol	Chain	Residues	Atoms		ZeroOcc	AltConf
			Total	O		
6	A	24	Total	O	0	0
			24	24		
6	B	76	Total	O	0	0
			76	76		

Continued on next page...

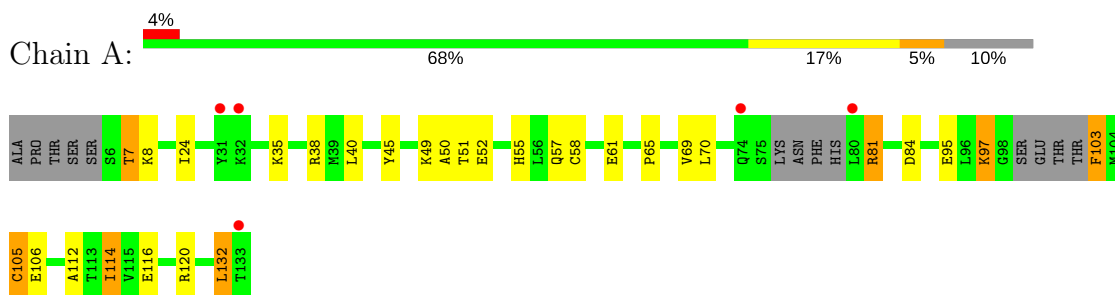
Continued from previous page...

Mol	Chain	Residues	Atoms	ZeroOcc	AltConf
6	C	63	Total O 63 63	0	0
6	D	8	Total O 8 8	0	0

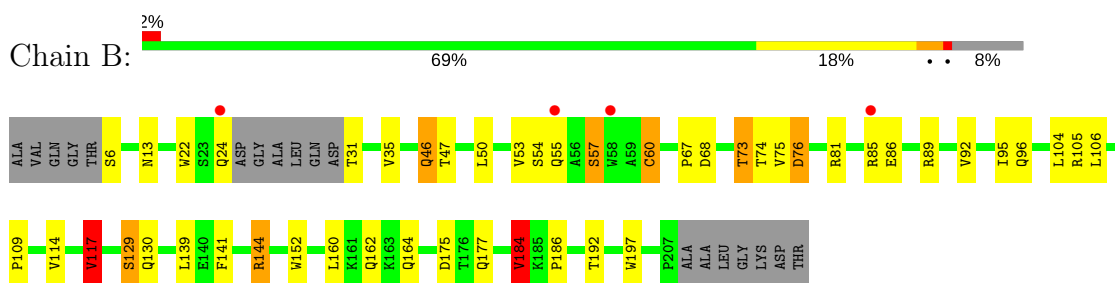
3 Residue-property plots i

These plots are drawn for all protein, RNA and DNA chains in the entry. The first graphic for a chain summarises the proportions of the various outlier classes displayed in the second graphic. The second graphic shows the sequence view annotated by issues in geometry and electron density. Residues are color-coded according to the number of geometric quality criteria for which they contain at least one outlier: green = 0, yellow = 1, orange = 2 and red = 3 or more. A red dot above a residue indicates a poor fit to the electron density ($RSRZ > 2$). Stretches of 2 or more consecutive residues without any outlier are shown as a green connector. Residues present in the sample, but not in the model, are shown in grey.

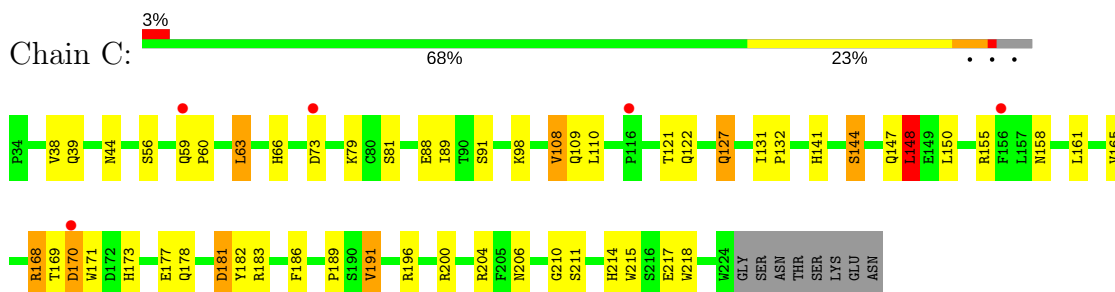
- Molecule 1: Interleukin-2



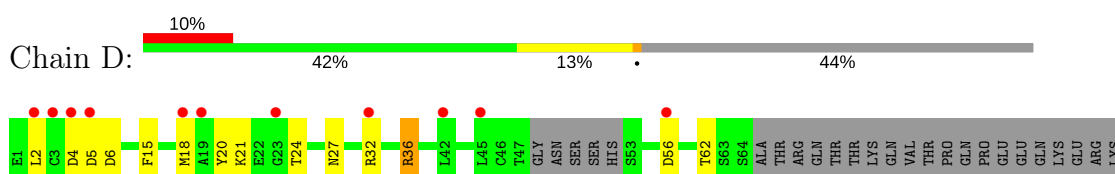
- Molecule 2: Interleukin-2 receptor beta chain

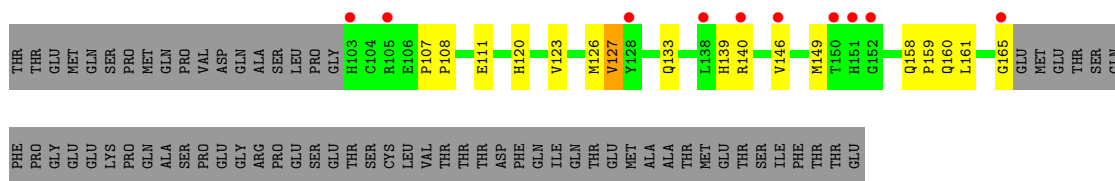


- Molecule 3: Cytokine receptor common gamma chain



- Molecule 4: Interleukin-2 receptor alpha chain





4 Data and refinement statistics i

Property	Value	Source
Space group	C 1 2 1	Depositor
Cell constants a, b, c, α , β , γ	113.91Å 87.71Å 130.18Å 90.00° 116.32° 90.00°	Depositor
Resolution (Å)	20.00 – 2.30 51.05 – 2.20	Depositor EDS
% Data completeness (in resolution range)	99.4 (20.00-2.30) 96.7 (51.05-2.20)	Depositor EDS
R_{merge}	(Not available)	Depositor
R_{sym}	(Not available)	Depositor
$\langle I/\sigma(I) \rangle$ ¹	1.47 (at 2.20Å)	Xtrriage
Refinement program	REFMAC 5.2.0003	Depositor
R, R_{free}	0.223 , 0.269 0.226 , 0.217	Depositor DCC
R_{free} test set	2874 reflections (4.99%)	wwPDB-VP
Wilson B-factor (Å ²)	48.0	Xtrriage
Anisotropy	0.421	Xtrriage
Bulk solvent k_{sol} (e/Å ³), B_{sol} (Å ²)	0.32 , 55.8	EDS
L-test for twinning ²	$\langle L \rangle = 0.43$, $\langle L^2 \rangle = 0.26$	Xtrriage
Estimated twinning fraction	0.126 for h,-k,-h-l	Xtrriage
F_o, F_c correlation	0.95	EDS
Total number of atoms	5463	wwPDB-VP
Average B, all atoms (Å ²)	57.0	wwPDB-VP

Xtrriage's analysis on translational NCS is as follows: *The largest off-origin peak in the Patterson function is 4.13% of the height of the origin peak. No significant pseudotranslation is detected.*

¹Intensities estimated from amplitudes.

²Theoretical values of $\langle |L| \rangle$, $\langle L^2 \rangle$ for acentric reflections are 0.5, 0.333 respectively for untwinned datasets, and 0.375, 0.2 for perfectly twinned datasets.

5 Model quality i

5.1 Standard geometry i

Bond lengths and bond angles in the following residue types are not validated in this section:
NAG

The Z score for a bond length (or angle) is the number of standard deviations the observed value is removed from the expected value. A bond length (or angle) with $|Z| > 5$ is considered an outlier worth inspection. RMSZ is the root-mean-square of all Z scores of the bond lengths (or angles).

Mol	Chain	Bond lengths		Bond angles	
		RMSZ	# Z >5	RMSZ	# Z >5
1	A	0.47	0/996	0.71	1/1340 (0.1%)
2	B	0.53	0/1666	0.77	4/2272 (0.2%)
3	C	0.96	8/1685 (0.5%)	0.82	4/2294 (0.2%)
4	D	0.40	1/1002 (0.1%)	0.68	4/1352 (0.3%)
All	All	0.67	9/5349 (0.2%)	0.76	13/7258 (0.2%)

All (9) bond length outliers are listed below:

Mol	Chain	Res	Type	Atoms	Z	Observed(Å)	Ideal(Å)
3	C	88	GLU	CD-OE2	15.73	1.43	1.25
3	C	196	ARG	CZ-NH1	14.85	1.52	1.33
3	C	88	GLU	CG-CD	14.51	1.73	1.51
3	C	88	GLU	CD-OE1	14.22	1.41	1.25
3	C	170	ASP	CG-OD1	7.32	1.42	1.25
3	C	196	ARG	CZ-NH2	6.63	1.41	1.33
3	C	170	ASP	CG-OD2	6.60	1.40	1.25
3	C	196	ARG	CG-CD	5.46	1.65	1.51
4	D	165	GLY	C-O	5.37	1.32	1.23

All (13) bond angle outliers are listed below:

Mol	Chain	Res	Type	Atoms	Z	Observed(°)	Ideal(°)
3	C	196	ARG	NE-CZ-NH2	-13.49	113.56	120.30
2	B	184	VAL	CB-CA-C	-7.38	97.37	111.40
1	A	84	ASP	CB-CG-OD2	6.95	124.55	118.30
2	B	117	VAL	CB-CA-C	-6.28	99.47	111.40
4	D	6	ASP	CB-CG-OD2	6.00	123.70	118.30
4	D	56	ASP	CB-CG-OD2	5.71	123.44	118.30
3	C	73	ASP	CB-CG-OD2	5.51	123.26	118.30
3	C	181	ASP	CB-CG-OD2	5.43	123.19	118.30

Continued on next page...

Continued from previous page...

Mol	Chain	Res	Type	Atoms	Z	Observed(°)	Ideal(°)
4	D	4	ASP	CB-CG-OD2	5.31	123.08	118.30
3	C	148	LEU	CA-CB-CG	5.18	127.22	115.30
2	B	175	ASP	CB-CG-OD2	5.09	122.89	118.30
4	D	5	ASP	CB-CG-OD2	5.06	122.86	118.30
2	B	76	ASP	CB-CG-OD2	5.05	122.84	118.30

There are no chirality outliers.

There are no planarity outliers.

5.2 Too-close contacts [i](#)

In the following table, the Non-H and H(model) columns list the number of non-hydrogen atoms and hydrogen atoms in the chain respectively. The H(added) column lists the number of hydrogen atoms added and optimized by MolProbity. The Clashes column lists the number of clashes within the asymmetric unit, whereas Symm-Clashes lists symmetry related clashes.

Mol	Chain	Non-H	H(model)	H(added)	Clashes	Symm-Clashes
1	A	983	0	1024	23	0
2	B	1618	0	1569	33	0
3	C	1630	0	1530	25	0
4	D	977	0	920	16	0
5	B	28	0	25	0	0
5	C	56	0	51	0	0
6	A	24	0	0	0	0
6	B	76	0	0	4	0
6	C	63	0	0	2	0
6	D	8	0	0	0	0
All	All	5463	0	5119	90	0

The all-atom clashscore is defined as the number of clashes found per 1000 atoms (including hydrogen atoms). The all-atom clashscore for this structure is 9.

All (90) close contacts within the same asymmetric unit are listed below, sorted by their clash magnitude.

Atom-1	Atom-2	Interatomic distance (Å)	Clash overlap (Å)
2:B:114:VAL:HG11	2:B:117:VAL:HG22	1.46	0.94
2:B:73:THR:HG22	2:B:75:VAL:H	1.43	0.82
4:D:140:ARG:O	4:D:160:GLN:HB3	1.81	0.81
1:A:95:GLU:HG3	2:B:75:VAL:HB	1.62	0.80
4:D:20:TYR:HB3	4:D:24:THR:HG21	1.65	0.78

Continued on next page...

Continued from previous page...

Atom-1	Atom-2	Interatomic distance (Å)	Clash overlap (Å)
1:A:51:THR:H	1:A:55:HIS:HD2	1.34	0.76
3:C:206:ASN:HD22	3:C:211:SER:HA	1.54	0.72
2:B:129:SER:O	6:B:258:HOH:O	2.08	0.70
1:A:51:THR:H	1:A:55:HIS:CD2	2.09	0.70
4:D:27:ASN:OD1	4:D:120:HIS:HE1	1.73	0.70
3:C:181:ASP:OD2	3:C:183:ARG:HD3	1.92	0.68
2:B:130:GLN:N	6:B:260:HOH:O	2.27	0.67
3:C:38:VAL:H	3:C:122:GLN:HE22	1.42	0.67
3:C:109:GLN:HG3	3:C:121:THR:HG22	1.77	0.67
2:B:73:THR:HB	2:B:76:ASP:OD1	1.96	0.66
2:B:46:GLN:HE21	2:B:47:THR:H	1.46	0.63
4:D:21:LYS:O	4:D:24:THR:HG22	1.98	0.63
3:C:178:GLN:HG2	3:C:186:PHE:HE1	1.64	0.62
2:B:50:LEU:HD23	2:B:60:CYS:HB2	1.84	0.60
1:A:57:GLN:HE21	1:A:97:LYS:HE2	1.66	0.59
4:D:126:MET:HG3	4:D:146:VAL:HG22	1.85	0.58
2:B:144:ARG:HG2	2:B:197:TRP:CH2	2.39	0.57
2:B:141:PHE:CE2	2:B:184:VAL:HG13	2.38	0.57
1:A:81:ARG:N	1:A:81:ARG:HD2	2.20	0.56
1:A:50:ALA:HB3	1:A:120:ARG:NH2	2.21	0.56
3:C:127:GLN:NE2	3:C:127:GLN:H	2.02	0.56
1:A:45:TYR:HE2	4:D:36:ARG:HG3	1.71	0.56
2:B:105:ARG:NH2	6:B:249:HOH:O	2.32	0.55
4:D:140:ARG:O	4:D:160:GLN:CB	2.52	0.55
2:B:54:SER:HB3	2:B:57:SER:HB2	1.89	0.55
2:B:144:ARG:HD3	2:B:152:TRP:CE3	2.42	0.55
3:C:178:GLN:HG2	3:C:186:PHE:CE1	2.41	0.55
1:A:81:ARG:HD2	1:A:81:ARG:H	1.73	0.54
3:C:148:LEU:HG	3:C:191:VAL:HG11	1.90	0.54
2:B:81:ARG:HD3	2:B:95:ILE:HD12	1.91	0.53
3:C:217:GLU:HB3	6:C:438:HOH:O	2.08	0.53
1:A:52:GLU:H	1:A:55:HIS:HD2	1.57	0.53
1:A:38:ARG:HD2	4:D:120:HIS:HD2	1.76	0.51
1:A:24:ILE:HG23	1:A:70:LEU:HD21	1.93	0.50
4:D:139:HIS:CE1	4:D:161:LEU:HD13	2.46	0.50
3:C:200:ARG:HG3	3:C:218:TRP:CE3	2.46	0.50
3:C:169:THR:C	3:C:171:TRP:H	2.13	0.50
2:B:162:GLN:HE21	2:B:164:GLN:NE2	2.10	0.50
3:C:168:ARG:HD2	6:C:419:HOH:O	2.12	0.50
3:C:127:GLN:H	3:C:127:GLN:HE21	1.58	0.50
1:A:45:TYR:CE2	4:D:36:ARG:HG3	2.47	0.49

Continued on next page...

Continued from previous page...

Atom-1	Atom-2	Interatomic distance (Å)	Clash overlap (Å)
2:B:105:ARG:HG2	2:B:105:ARG:HH21	1.76	0.49
1:A:81:ARG:N	1:A:81:ARG:CD	2.76	0.49
2:B:22:TRP:CZ2	2:B:24:GLN:HB2	2.49	0.48
4:D:15:PHE:HB2	4:D:127:VAL:HG13	1.96	0.47
2:B:85:ARG:O	2:B:89:ARG:O	2.33	0.47
2:B:104:LEU:O	2:B:192:THR:HA	2.14	0.47
4:D:140:ARG:O	4:D:140:ARG:HG3	2.15	0.46
2:B:81:ARG:HH11	2:B:95:ILE:HD12	1.80	0.46
1:A:52:GLU:HG2	1:A:55:HIS:CD2	2.51	0.46
2:B:73:THR:CG2	2:B:74:THR:N	2.78	0.46
2:B:31:THR:N	6:B:244:HOH:O	2.48	0.46
3:C:60:PRO:HB3	3:C:89:ILE:HD11	1.98	0.46
4:D:158:GLN:HA	4:D:159:PRO:HD2	1.84	0.45
1:A:58:CYS:N	1:A:105:CYS:SG	2.90	0.45
2:B:73:THR:CG2	2:B:75:VAL:H	2.23	0.45
2:B:95:ILE:HG13	2:B:96:GLN:H	1.81	0.45
2:B:54:SER:OG	2:B:55:GLN:N	2.50	0.45
3:C:206:ASN:HA	3:C:210:GLY:O	2.16	0.45
1:A:57:GLN:HG3	1:A:103:PHE:N	2.32	0.44
2:B:73:THR:CG2	2:B:75:VAL:HG22	2.48	0.44
3:C:66:HIS:CE1	3:C:79:LYS:HG2	2.52	0.44
1:A:35:LYS:NZ	4:D:2:LEU:HD23	2.33	0.44
1:A:65:PRO:HG3	4:D:36:ARG:NH2	2.33	0.43
2:B:35:VAL:O	2:B:47:THR:HA	2.18	0.43
3:C:131:ILE:CD1	3:C:214:HIS:HB2	2.49	0.43
1:A:52:GLU:H	1:A:55:HIS:CD2	2.34	0.43
3:C:63:LEU:HD23	3:C:110:LEU:HD13	1.99	0.43
4:D:107:PRO:HA	4:D:108:PRO:HD3	1.94	0.42
1:A:7:THR:HG23	1:A:132:LEU:HG	2.01	0.42
3:C:144:SER:HB3	3:C:147:GLN:HB2	2.01	0.42
1:A:112:ALA:HB1	1:A:116:GLU:HB2	2.00	0.42
2:B:109:PRO:HG3	2:B:184:VAL:HG22	2.02	0.42
3:C:108:VAL:O	3:C:121:THR:HA	2.19	0.42
2:B:160:LEU:HD21	3:C:189:PRO:HG3	2.02	0.42
3:C:131:ILE:HA	3:C:132:PRO:HD3	1.90	0.41
3:C:204:ARG:HB2	3:C:215:TRP:CE3	2.55	0.41
3:C:44:ASN:HD22	3:C:132:PRO:HA	1.84	0.41
2:B:73:THR:HG21	2:B:75:VAL:HG22	2.02	0.41
1:A:57:GLN:O	1:A:61:GLU:HG3	2.21	0.41
2:B:67:PRO:HB3	2:B:130:GLN:HE21	1.86	0.41
2:B:139:LEU:HD23	2:B:186:PRO:HA	2.03	0.41

Continued on next page...

Continued from previous page...

Atom-1	Atom-2	Interatomic distance (Å)	Clash overlap (Å)
2:B:81:ARG:HG3	2:B:92:VAL:HG13	2.03	0.41
3:C:165:VAL:O	3:C:177:GLU:HA	2.21	0.41
1:A:114:ILE:HG13	1:A:114:ILE:H	1.62	0.40

There are no symmetry-related clashes.

5.3 Torsion angles [i](#)

5.3.1 Protein backbone [i](#)

In the following table, the Percentiles column shows the percent Ramachandran outliers of the chain as a percentile score with respect to all X-ray entries followed by that with respect to entries of similar resolution.

The Analysed column shows the number of residues for which the backbone conformation was analysed, and the total number of residues.

Mol	Chain	Analysed	Favoured	Allowed	Outliers	Percentiles	
1	A	114/133 (86%)	110 (96%)	4 (4%)	0	100	100
2	B	192/214 (90%)	176 (92%)	14 (7%)	2 (1%)	17	19
3	C	189/199 (95%)	173 (92%)	12 (6%)	4 (2%)	8	6
4	D	116/217 (54%)	106 (91%)	9 (8%)	1 (1%)	19	22
All	All	611/763 (80%)	565 (92%)	39 (6%)	7 (1%)	16	17

All (7) Ramachandran outliers are listed below:

Mol	Chain	Res	Type
4	D	111	GLU
3	C	59	GLN
3	C	158	ASN
3	C	170	ASP
2	B	129	SER
3	C	155	ARG
2	B	53	VAL

5.3.2 Protein sidechains [i](#)

In the following table, the Percentiles column shows the percent sidechain outliers of the chain as a percentile score with respect to all X-ray entries followed by that with respect to entries of similar

resolution.

The Analysed column shows the number of residues for which the sidechain conformation was analysed, and the total number of residues.

Mol	Chain	Analysed	Rotameric	Outliers	Percentiles	
1	A	114/126 (90%)	102 (90%)	12 (10%)	7	8
2	B	180/192 (94%)	167 (93%)	13 (7%)	16	20
3	C	185/192 (96%)	168 (91%)	17 (9%)	10	12
4	D	108/194 (56%)	100 (93%)	8 (7%)	15	19
All	All	587/704 (83%)	537 (92%)	50 (8%)	12	14

All (50) residues with a non-rotameric sidechain are listed below:

Mol	Chain	Res	Type
1	A	7	THR
1	A	8	LYS
1	A	40	LEU
1	A	49	LYS
1	A	69	VAL
1	A	81	ARG
1	A	97	LYS
1	A	103	PHE
1	A	105	CYS
1	A	106	GLU
1	A	114	ILE
1	A	132	LEU
2	B	6	SER
2	B	13	ASN
2	B	46	GLN
2	B	57	SER
2	B	60	CYS
2	B	68	ASP
2	B	73	THR
2	B	86	GLU
2	B	106	LEU
2	B	117	VAL
2	B	144	ARG
2	B	177	GLN
2	B	184	VAL
3	C	39	GLN
3	C	56	SER
3	C	63	LEU

Continued on next page...

Continued from previous page...

Mol	Chain	Res	Type
3	C	81	SER
3	C	91	SER
3	C	98	LYS
3	C	108	VAL
3	C	127	GLN
3	C	141	HIS
3	C	144	SER
3	C	148	LEU
3	C	150	LEU
3	C	161	LEU
3	C	168	ARG
3	C	173	HIS
3	C	182	TYR
3	C	191	VAL
4	D	18	MET
4	D	32	ARG
4	D	36	ARG
4	D	62	THR
4	D	123	VAL
4	D	127	VAL
4	D	133	GLN
4	D	149	MET

Some sidechains can be flipped to improve hydrogen bonding and reduce clashes. All (22) such sidechains are listed below:

Mol	Chain	Res	Type
1	A	26	ASN
1	A	55	HIS
1	A	57	GLN
1	A	90	ASN
1	A	119	ASN
2	B	13	ASN
2	B	46	GLN
2	B	164	GLN
3	C	39	GLN
3	C	44	ASN
3	C	66	HIS
3	C	82	HIS
3	C	94	GLN
3	C	109	GLN
3	C	119	GLN
3	C	122	GLN

Continued on next page...

Continued from previous page...

Mol	Chain	Res	Type
3	C	127	GLN
3	C	154	ASN
3	C	206	ASN
4	D	120	HIS
4	D	133	GLN
4	D	139	HIS

5.3.3 RNA [i](#)

There are no RNA molecules in this entry.

5.4 Non-standard residues in protein, DNA, RNA chains [i](#)

There are no non-standard protein/DNA/RNA residues in this entry.

5.5 Carbohydrates [i](#)

There are no carbohydrates in this entry.

5.6 Ligand geometry [i](#)

6 ligands are modelled in this entry.

In the following table, the Counts columns list the number of bonds (or angles) for which Mogul statistics could be retrieved, the number of bonds (or angles) that are observed in the model and the number of bonds (or angles) that are defined in the Chemical Component Dictionary. The Link column lists molecule types, if any, to which the group is linked. The Z score for a bond length (or angle) is the number of standard deviations the observed value is removed from the expected value. A bond length (or angle) with $|Z| > 2$ is considered an outlier worth inspection. RMSZ is the root-mean-square of all Z scores of the bond lengths (or angles).

Mol	Type	Chain	Res	Link	Bond lengths			Bond angles		
					Counts	RMSZ	# Z > 2	Counts	RMSZ	# Z > 2
5	NAG	B	215	2,5	14,14,15	0.63	0	17,19,21	1.21	3 (17%)
5	NAG	B	216	5	14,14,15	0.52	0	17,19,21	1.22	1 (5%)
5	NAG	C	233	3,5	14,14,15	0.65	0	17,19,21	1.05	1 (5%)
5	NAG	C	234	5	14,14,15	0.55	0	17,19,21	1.21	1 (5%)
5	NAG	C	300	3	14,14,15	0.50	0	17,19,21	1.55	5 (29%)
5	NAG	C	400	3	14,14,15	0.49	0	17,19,21	1.01	1 (5%)

In the following table, the Chirals column lists the number of chiral outliers, the number of chiral centers analysed, the number of these observed in the model and the number defined in the Chemical Component Dictionary. Similar counts are reported in the Torsion and Rings columns. '-' means no outliers of that kind were identified.

Mol	Type	Chain	Res	Link	Chirals	Torsions	Rings
5	NAG	B	215	2,5	-	0/6/23/26	0/1/1/1
5	NAG	B	216	5	-	0/6/23/26	0/1/1/1
5	NAG	C	233	3,5	-	0/6/23/26	0/1/1/1
5	NAG	C	234	5	-	0/6/23/26	0/1/1/1
5	NAG	C	300	3	-	0/6/23/26	0/1/1/1
5	NAG	C	400	3	-	0/6/23/26	0/1/1/1

There are no bond length outliers.

All (12) bond angle outliers are listed below:

Mol	Chain	Res	Type	Atoms	Z	Observed(°)	Ideal(°)
5	C	234	NAG	O5-C1-C2	-3.21	107.08	111.52
5	C	300	NAG	O5-C1-C2	-2.53	108.02	111.52
5	C	233	NAG	O5-C1-C2	-2.46	108.13	111.52
5	B	215	NAG	O4-C4-C3	-2.45	104.62	110.34
5	C	300	NAG	C3-C4-C5	-2.21	106.28	110.24
5	B	215	NAG	O5-C1-C2	-2.17	108.53	111.52
5	B	215	NAG	O5-C5-C6	2.12	110.50	107.15
5	C	400	NAG	O5-C5-C6	2.18	110.59	107.15
5	C	300	NAG	O5-C5-C6	2.25	110.71	107.15
5	C	300	NAG	C8-C7-N2	2.28	120.09	116.10
5	C	300	NAG	C1-O5-C5	2.55	115.70	112.19
5	B	216	NAG	C1-O5-C5	3.24	116.64	112.19

There are no chirality outliers.

There are no torsion outliers.

There are no ring outliers.

No monomer is involved in short contacts.

5.7 Other polymers [\(i\)](#)

There are no such residues in this entry.

5.8 Polymer linkage issues [\(i\)](#)

There are no chain breaks in this entry.

6 Fit of model and data

6.1 Protein, DNA and RNA chains

In the following table, the column labelled ‘#RSRZ > 2’ contains the number (and percentage) of RSRZ outliers, followed by percent RSRZ outliers for the chain as percentile scores relative to all X-ray entries and entries of similar resolution. The OWAB column contains the minimum, median, 95th percentile and maximum values of the occupancy-weighted average B-factor per residue. The column labelled ‘Q < 0.9’ lists the number of (and percentage) of residues with an average occupancy less than 0.9.

Mol	Chain	Analysed	<RSRZ>	#RSRZ>2	OWAB(Å ²)	Q<0.9
1	A	120/133 (90%)	0.49	5 (4%) 36 43	50, 57, 69, 75	0
2	B	196/214 (91%)	0.27	4 (2%) 65 71	51, 56, 64, 70	0
3	C	191/199 (95%)	0.29	5 (2%) 56 63	49, 57, 66, 71	0
4	D	122/217 (56%)	0.95	21 (17%) 1 1	52, 57, 66, 67	0
All	All	629/763 (82%)	0.45	35 (5%) 24 31	49, 57, 66, 75	0

All (35) RSRZ outliers are listed below:

Mol	Chain	Res	Type	RSRZ
4	D	128	TYR	7.7
1	A	31	TYR	6.0
1	A	74	GLN	5.5
4	D	18	MET	4.7
3	C	156	PHE	4.7
4	D	23	GLY	4.6
4	D	151	HIS	4.5
4	D	19	ALA	3.7
4	D	32	ARG	3.6
1	A	133	THR	3.6
4	D	150	THR	3.4
1	A	32	LYS	3.3
4	D	152	GLY	3.2
4	D	105	ARG	3.1
4	D	56	ASP	3.0
4	D	45	LEU	3.0
4	D	2	LEU	2.9
4	D	140	ARG	2.9
2	B	58	TRP	2.7
2	B	85	ARG	2.7
4	D	4	ASP	2.7

Continued on next page...

Continued from previous page...

Mol	Chain	Res	Type	RSRZ
1	A	80	LEU	2.5
2	B	24	GLN	2.5
4	D	3	CYS	2.5
3	C	59	GLN	2.3
3	C	170	ASP	2.2
4	D	165	GLY	2.2
4	D	103	HIS	2.2
2	B	55	GLN	2.2
3	C	73	ASP	2.1
3	C	116	PRO	2.1
4	D	42	LEU	2.1
4	D	138	LEU	2.1
4	D	146	VAL	2.0
4	D	5	ASP	2.0

6.2 Non-standard residues in protein, DNA, RNA chains [i](#)

There are no non-standard protein/DNA/RNA residues in this entry.

6.3 Carbohydrates [i](#)

There are no carbohydrates in this entry.

6.4 Ligands [i](#)

In the following table, the Atoms column lists the number of modelled atoms in the group and the number defined in the chemical component dictionary. The B-factors column lists the minimum, median, 95th percentile and maximum values of B factors of atoms in the group. The column labelled 'Q< 0.9' lists the number of atoms with occupancy less than 0.9.

Mol	Type	Chain	Res	Atoms	RSCC	RSR	B-factors(Å ²)	Q<0.9
5	NAG	C	234	14/15	0.69	0.39	75,79,80,81	0
5	NAG	C	400	14/15	0.71	0.29	76,80,82,82	0
5	NAG	C	300	14/15	0.86	0.15	68,71,73,73	0
5	NAG	B	215	14/15	0.93	0.12	46,49,55,59	0
5	NAG	C	233	14/15	0.93	0.12	56,60,64,70	0
5	NAG	B	216	14/15	0.93	0.08	48,56,58,61	0

6.5 Other polymers [i](#)

There are no such residues in this entry.