



Full wwPDB X-ray Structure Validation Report ⓘ

Sep 25, 2023 – 02:48 PM EDT

PDB ID : 6B5G
Title : ALDH1A2 liganded with NAD and (3-ethoxythiophen-2-yl){4-[4-nitro-3-(pyrrolidin-1-yl)phenyl]piperazin-1-yl}methanone (compound 6-118)
Authors : Chen, Y.; Zhu, J.-Y.; Schonbrunn, E.
Deposited on : 2017-09-29
Resolution : 2.20 Å(reported)

This is a Full wwPDB X-ray Structure Validation Report for a publicly released PDB entry.

We welcome your comments at validation@mail.wwpdb.org

A user guide is available at

<https://www.wwpdb.org/validation/2017/XrayValidationReportHelp>

with specific help available everywhere you see the ⓘ symbol.

The types of validation reports are described at

<http://www.wwpdb.org/validation/2017/FAQs#types>.

The following versions of software and data (see [references ⓘ](#)) were used in the production of this report:

MolProbity : 4.02b-467
Mogul : 1.8.5 (274361), CSD as541be (2020)
Xtriage (Phenix) : 1.13
EDS : 2.35.1
buster-report : 1.1.7 (2018)
Percentile statistics : 20191225.v01 (using entries in the PDB archive December 25th 2019)
Refmac : 5.8.0158
CCP4 : 7.0.044 (Gargrove)
Ideal geometry (proteins) : Engh & Huber (2001)
Ideal geometry (DNA, RNA) : Parkinson et al. (1996)
Validation Pipeline (wwPDB-VP) : 2.35.1

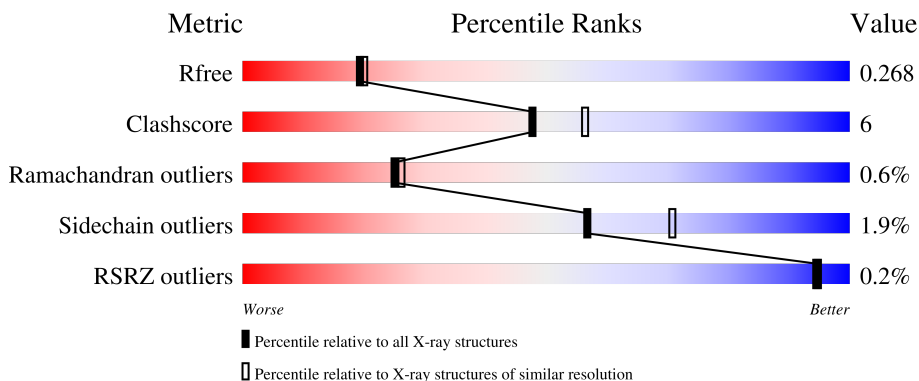
1 Overall quality at a glance

The following experimental techniques were used to determine the structure:

X-RAY DIFFRACTION

The reported resolution of this entry is 2.20 Å.

Percentile scores (ranging between 0-100) for global validation metrics of the entry are shown in the following graphic. The table shows the number of entries on which the scores are based.



Metric	Whole archive (#Entries)	Similar resolution (#Entries, resolution range(Å))
R_{free}	130704	4898 (2.20-2.20)
Clashscore	141614	5594 (2.20-2.20)
Ramachandran outliers	138981	5503 (2.20-2.20)
Sidechain outliers	138945	5504 (2.20-2.20)
RSRZ outliers	127900	4800 (2.20-2.20)

The table below summarises the geometric issues observed across the polymeric chains and their fit to the electron density. The red, orange, yellow and green segments of the lower bar indicate the fraction of residues that contain outliers for ≥ 3 , 2, 1 and 0 types of geometric quality criteria respectively. A grey segment represents the fraction of residues that are not modelled. The numeric value for each fraction is indicated below the corresponding segment, with a dot representing fractions $\leq 5\%$. The upper red bar (where present) indicates the fraction of residues that have poor fit to the electron density. The numeric value is given above the bar.

Mol	Chain	Length	Quality of chain
1	A	493	 86% 13% .
1	B	493	 83% 16%
1	C	493	 84% 15% .
1	D	493	 84% 15% .

2 Entry composition [i](#)

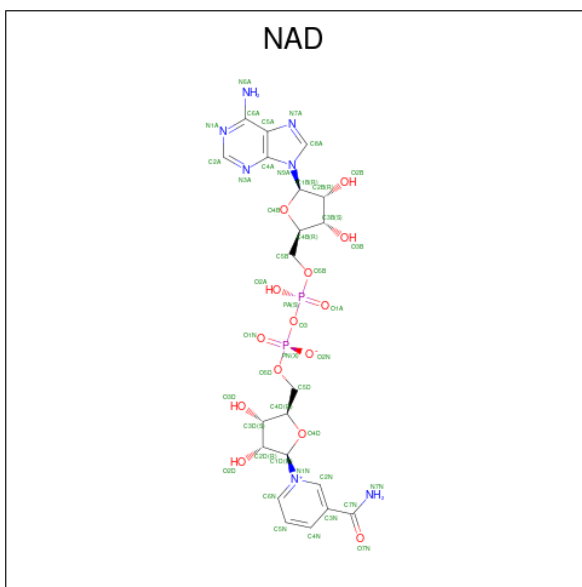
There are 4 unique types of molecules in this entry. The entry contains 16220 atoms, of which 0 are hydrogens and 0 are deuteriums.

In the tables below, the ZeroOcc column contains the number of atoms modelled with zero occupancy, the AltConf column contains the number of residues with at least one atom in alternate conformation and the Trace column contains the number of residues modelled with at most 2 atoms.

- Molecule 1 is a protein called Retinal dehydrogenase 2.

Mol	Chain	Residues	Atoms					ZeroOcc	AltConf	Trace
			Total	C	N	O	S			
1	A	492	Total 3803	C 2420	N 651	O 714	S 18	0	0	0
1	B	492	Total 3803	C 2420	N 651	O 714	S 18	0	0	0
1	C	492	Total 3803	C 2420	N 651	O 714	S 18	0	0	0
1	D	492	Total 3803	C 2420	N 651	O 714	S 18	0	0	0

- Molecule 2 is NICOTINAMIDE-ADENINE-DINUCLEOTIDE (three-letter code: NAD) (formula: $C_{21}H_{27}N_7O_{14}P_2$).



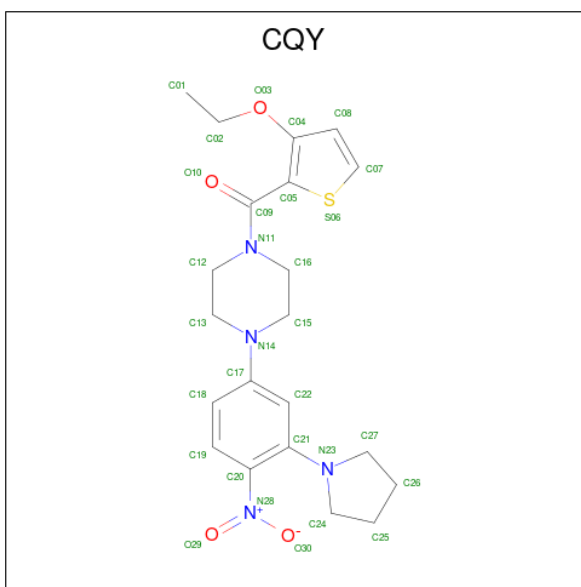
Mol	Chain	Residues	Atoms				ZeroOcc	AltConf	
			Total	C	N	O			P
2	A	1	Total 44	C 21	N 7	O 14	P 2	0	0
2	B	1	Total 44	C 21	N 7	O 14	P 2	0	0

Continued on next page...

Continued from previous page...

Mol	Chain	Residues	Atoms				ZeroOcc	AltConf	
			Total	C	N	O			P
2	C	1	Total	C	N	O	P	0	0
			44	21	7	14	2		
2	D	1	Total	C	N	O	P	0	0
			44	21	7	14	2		

- Molecule 3 is (3-ethoxythiophen-2-yl){4-[4-nitro-3-(pyrrolidin-1-yl)phenyl]piperazin-1-yl}methanone (three-letter code: CQY) (formula: C₂₁H₂₆N₄O₄S) (labeled as "Ligand of Interest" by depositor).



Mol	Chain	Residues	Atoms				ZeroOcc	AltConf	
			Total	C	N	O			S
3	A	1	Total	C	N	O	S	0	0
			30	21	4	4	1		
3	B	1	Total	C	N	O	S	0	0
			30	21	4	4	1		
3	C	1	Total	C	N	O	S	0	0
			30	21	4	4	1		
3	D	1	Total	C	N	O	S	0	0
			30	21	4	4	1		

- Molecule 4 is water.

Mol	Chain	Residues	Atoms		ZeroOcc	AltConf
			Total	O		
4	A	186	Total	O	0	0
			186	186		
4	B	145	Total	O	0	0
			145	145		

Continued on next page...

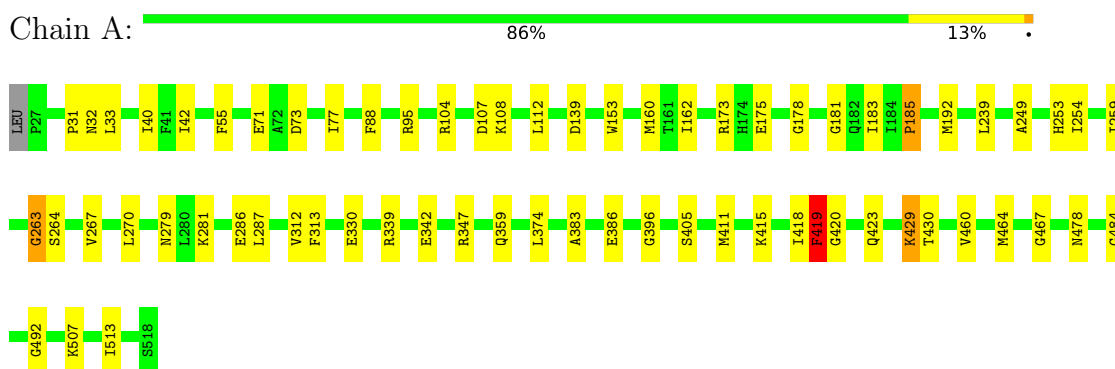
Continued from previous page...

Mol	Chain	Residues	Atoms		ZeroOcc	AltConf
4	C	179	Total 179	O 179	0	0
4	D	202	Total 202	O 202	0	0

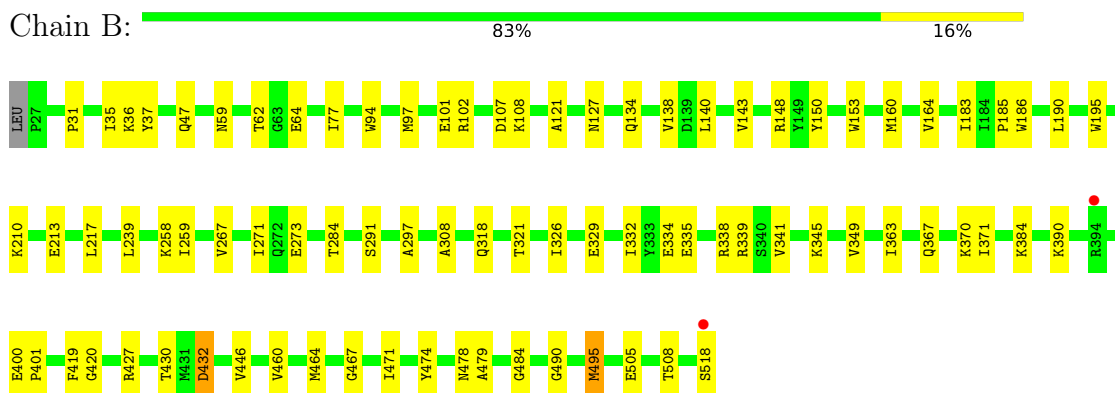
3 Residue-property plots [i](#)

These plots are drawn for all protein, RNA, DNA and oligosaccharide chains in the entry. The first graphic for a chain summarises the proportions of the various outlier classes displayed in the second graphic. The second graphic shows the sequence view annotated by issues in geometry and electron density. Residues are color-coded according to the number of geometric quality criteria for which they contain at least one outlier: green = 0, yellow = 1, orange = 2 and red = 3 or more. A red dot above a residue indicates a poor fit to the electron density ($RSRZ > 2$). Stretches of 2 or more consecutive residues without any outlier are shown as a green connector. Residues present in the sample, but not in the model, are shown in grey.

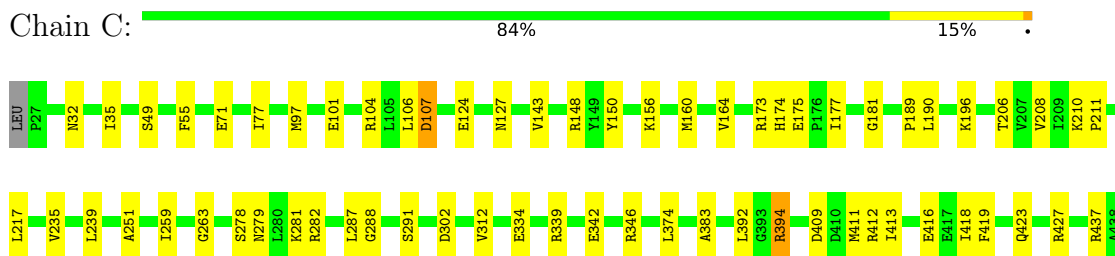
- Molecule 1: Retinal dehydrogenase 2

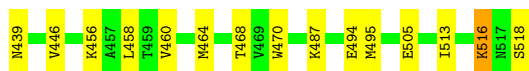


- Molecule 1: Retinal dehydrogenase 2



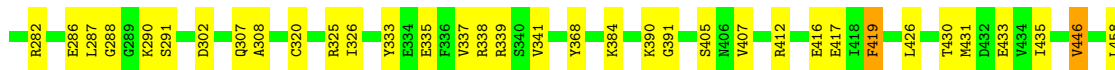
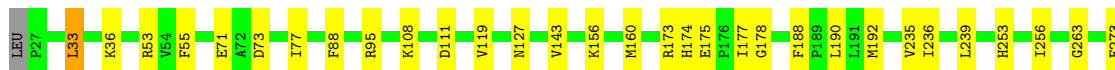
- Molecule 1: Retinal dehydrogenase 2





- Molecule 1: Retinal dehydrogenase 2

Chain D: 84% 15%



4 Data and refinement statistics

Property	Value	Source
Space group	P 21 21 21	Depositor
Cell constants a, b, c, α , β , γ	84.60Å 140.52Å 164.61Å 90.00° 90.00° 90.00°	Depositor
Resolution (Å)	51.11 – 2.20 75.24 – 2.20	Depositor EDS
% Data completeness (in resolution range)	98.6 (51.11-2.20) 98.7 (75.24-2.20)	Depositor EDS
R_{merge}	0.11	Depositor
R_{sym}	(Not available)	Depositor
$\langle I/\sigma(I) \rangle$ ¹	3.27 (at 2.20Å)	Xtrriage
Refinement program	PHENIX 1.11.1-2575_2575	Depositor
R, R_{free}	0.203 , 0.269 0.203 , 0.268	Depositor DCC
R_{free} test set	989 reflections (1.00%)	wwPDB-VP
Wilson B-factor (Å ²)	27.8	Xtrriage
Anisotropy	0.560	Xtrriage
Bulk solvent k_{sol} (e/Å ³), B_{sol} (Å ²)	0.35 , 41.0	EDS
L-test for twinning ²	$\langle L \rangle = 0.45$, $\langle L^2 \rangle = 0.28$	Xtrriage
Estimated twinning fraction	No twinning to report.	Xtrriage
F_o, F_c correlation	0.95	EDS
Total number of atoms	16220	wwPDB-VP
Average B, all atoms (Å ²)	30.0	wwPDB-VP

Xtrriage's analysis on translational NCS is as follows: *The analyses of the Patterson function reveals a significant off-origin peak that is 48.38 % of the origin peak, indicating pseudo-translational symmetry. The chance of finding a peak of this or larger height randomly in a structure without pseudo-translational symmetry is equal to 8.6702e-05. The detected translational NCS is most likely also responsible for the elevated intensity ratio.*

¹Intensities estimated from amplitudes.

²Theoretical values of $\langle |L| \rangle$, $\langle L^2 \rangle$ for acentric reflections are 0.5, 0.333 respectively for untwinned datasets, and 0.375, 0.2 for perfectly twinned datasets.

5 Model quality [i](#)

5.1 Standard geometry [i](#)

Bond lengths and bond angles in the following residue types are not validated in this section: NAD, CQY

The Z score for a bond length (or angle) is the number of standard deviations the observed value is removed from the expected value. A bond length (or angle) with $|Z| > 5$ is considered an outlier worth inspection. RMSZ is the root-mean-square of all Z scores of the bond lengths (or angles).

Mol	Chain	Bond lengths		Bond angles	
		RMSZ	# Z >5	RMSZ	# Z >5
1	A	0.28	0/3884	0.49	0/5254
1	B	0.27	0/3884	0.46	0/5254
1	C	0.29	0/3884	0.47	0/5254
1	D	0.29	0/3884	0.47	0/5254
All	All	0.28	0/15536	0.47	0/21016

There are no bond length outliers.

There are no bond angle outliers.

There are no chirality outliers.

There are no planarity outliers.

5.2 Too-close contacts [i](#)

In the following table, the Non-H and H(model) columns list the number of non-hydrogen atoms and hydrogen atoms in the chain respectively. The H(added) column lists the number of hydrogen atoms added and optimized by MolProbity. The Clashes column lists the number of clashes within the asymmetric unit, whereas Symm-Clashes lists symmetry-related clashes.

Mol	Chain	Non-H	H(model)	H(added)	Clashes	Symm-Clashes
1	A	3803	0	3779	43	1
1	B	3803	0	3779	56	0
1	C	3803	0	3779	48	0
1	D	3803	0	3779	54	1
2	A	44	0	24	6	0
2	B	44	0	24	0	0
2	C	44	0	24	2	0
2	D	44	0	24	5	0
3	A	30	0	0	0	0

Continued on next page...

Continued from previous page...

Mol	Chain	Non-H	H(model)	H(added)	Clashes	Symm-Clashes
3	B	30	0	0	0	0
3	C	30	0	0	0	0
3	D	30	0	0	0	0
4	A	186	0	0	1	0
4	B	145	0	0	2	0
4	C	179	0	0	3	0
4	D	202	0	0	3	0
All	All	16220	0	15212	186	1

The all-atom clashscore is defined as the number of clashes found per 1000 atoms (including hydrogen atoms). The all-atom clashscore for this structure is 6.

All (186) close contacts within the same asymmetric unit are listed below, sorted by their clash magnitude.

Atom-1	Atom-2	Interatomic distance (Å)	Clash overlap (Å)
1:C:251:ALA:O	1:C:281:LYS:NZ	1.97	0.97
1:A:192:MET:HE1	2:A:601:NAD:H5N	1.50	0.92
1:A:419:PHE:CZ	2:A:601:NAD:H2D	2.05	0.90
1:B:148:ARG:NH1	4:B:701:HOH:O	1.85	0.85
1:A:419:PHE:HZ	2:A:601:NAD:H2D	1.40	0.81
1:D:290:LYS:HG3	1:D:325:ARG:HD2	1.62	0.80
1:C:446:VAL:HG23	1:C:468:THR:HB	1.64	0.80
1:D:419:PHE:CZ	2:D:601:NAD:H2D	2.17	0.80
1:A:185:PRO:HD2	1:A:192:MET:SD	2.21	0.79
1:B:186:TRP:CH2	1:B:419:PHE:HE2	2.00	0.79
1:A:173:ARG:NH1	1:A:175:GLU:OE2	2.20	0.74
1:B:479:ALA:HA	1:B:495:MET:HG3	1.70	0.73
1:B:47:GLN:NE2	4:B:702:HOH:O	2.19	0.73
1:C:77:ILE:HD13	1:C:239:LEU:HD22	1.70	0.73
1:D:177:ILE:HG12	1:D:505:GLU:HG2	1.69	0.73
1:D:435:ILE:HD11	1:D:460:VAL:HG22	1.70	0.73
1:B:335:GLU:OE1	1:B:338:ARG:NH2	2.23	0.70
1:B:62:THR:HG23	1:B:64:GLU:H	1.56	0.70
1:D:77:ILE:HD13	1:D:239:LEU:HD22	1.73	0.70
1:D:384:LYS:HB3	1:D:405:SER:HB3	1.74	0.69
1:D:419:PHE:HZ	2:D:601:NAD:H2D	1.56	0.68
1:C:107:ASP:OD1	1:C:148:ARG:NH1	2.27	0.67
1:B:62:THR:CG2	1:B:64:GLU:HG2	2.25	0.67
1:B:186:TRP:CH2	1:B:419:PHE:CE2	2.83	0.67
1:D:335:GLU:OE1	1:D:338:ARG:NH1	2.28	0.67
1:D:495:MET:SD	4:D:814:HOH:O	2.53	0.65

Continued on next page...

Continued from previous page...

Atom-1	Atom-2	Interatomic distance (Å)	Clash overlap (Å)
1:C:374:LEU:HD13	1:C:418:ILE:HG12	1.79	0.65
1:A:312:VAL:HG23	1:A:313:PHE:CD2	2.31	0.65
1:C:312:VAL:HG21	1:C:423:GLN:HG3	1.79	0.65
1:A:419:PHE:CZ	2:A:601:NAD:C2D	2.80	0.64
1:D:333:TYR:OH	1:D:405:SER:O	2.15	0.64
1:A:192:MET:HE1	2:A:601:NAD:C5N	2.27	0.64
1:B:371:ILE:HD12	1:B:420:GLY:HA3	1.80	0.64
1:C:374:LEU:O	1:C:413:ILE:HD11	1.97	0.63
1:A:267:VAL:HA	1:A:270:LEU:HD12	1.82	0.62
1:B:367:GLN:O	1:B:371:ILE:HG12	2.00	0.61
1:A:263:GLY:O	1:A:287:LEU:HA	2.01	0.61
1:B:62:THR:HG23	1:B:64:GLU:HG2	1.83	0.60
1:A:162:ILE:O	4:A:701:HOH:O	2.17	0.60
1:D:430:THR:HG22	1:D:433:GLU:H	1.67	0.59
1:A:374:LEU:HD13	1:A:418:ILE:HG12	1.85	0.58
1:B:121:ALA:HB2	1:B:140:LEU:HD12	1.86	0.58
1:B:77:ILE:HD13	1:B:239:LEU:HD22	1.84	0.58
1:A:160:MET:HA	1:B:160:MET:HA	1.86	0.57
1:B:471:ILE:HD12	1:D:511:VAL:HG22	1.87	0.57
1:A:386:GLU:OE2	1:A:405:SER:OG	2.19	0.57
1:A:254:ILE:HG13	1:A:279:ASN:HB3	1.86	0.56
1:A:513:ILE:HG22	1:D:458:LEU:HD13	1.87	0.56
1:A:77:ILE:HD13	1:A:239:LEU:HD22	1.87	0.56
1:B:334:GLU:HG2	1:B:335:GLU:N	2.21	0.56
1:C:342:GLU:O	1:C:346:ARG:HG3	2.06	0.56
1:A:418:ILE:O	1:A:420:GLY:N	2.38	0.55
1:B:258:LYS:HE2	1:B:284:THR:HG23	1.87	0.55
1:D:288:GLY:HA3	2:D:601:NAD:O2D	2.07	0.55
1:C:513:ILE:HD11	1:C:516:LYS:HB2	1.89	0.55
1:A:507:LYS:NZ	1:C:464:MET:O	2.40	0.54
1:B:273:GLU:HG3	1:D:273:GLU:HG3	1.89	0.54
1:B:195:TRP:CE3	1:B:495:MET:HE2	2.43	0.54
1:D:143:VAL:HG21	1:D:190:LEU:HG	1.88	0.54
1:A:339:ARG:O	1:A:342:GLU:HG2	2.08	0.54
1:C:143:VAL:HG21	1:C:190:LEU:HG	1.89	0.53
1:C:173:ARG:NH1	1:C:175:GLU:OE2	2.40	0.53
1:D:173:ARG:NH1	1:D:175:GLU:OE2	2.41	0.53
1:D:417:GLU:OE2	1:D:419:PHE:HE1	1.93	0.52
1:D:419:PHE:CZ	2:D:601:NAD:C2D	2.92	0.52
1:C:409:ASP:OD2	1:C:437:ARG:HD2	2.09	0.52
1:A:253:HIS:O	1:A:281:LYS:NZ	2.41	0.51

Continued on next page...

Continued from previous page...

Atom-1	Atom-2	Interatomic distance (Å)	Clash overlap (Å)
1:C:177:ILE:HG12	1:C:505:GLU:HG2	1.91	0.51
1:D:33:LEU:HD11	1:D:119:VAL:HG13	1.92	0.51
1:D:431:MET:O	1:D:435:ILE:HG12	2.10	0.51
1:B:62:THR:HG21	1:B:64:GLU:HG2	1.91	0.51
1:C:446:VAL:HG21	1:C:470:TRP:CH2	2.46	0.51
1:D:253:HIS:HB3	1:D:256:ILE:HG13	1.91	0.51
1:C:518:SER:HA	1:D:95:ARG:HH21	1.75	0.51
1:C:124:GLU:OE2	1:C:189:PRO:HD2	2.11	0.50
1:D:475:ASN:OD1	1:D:475:ASN:N	2.43	0.50
1:B:321:THR:O	1:B:474:TYR:OH	2.28	0.50
1:A:279:ASN:OD1	1:A:281:LYS:HE2	2.11	0.50
1:C:196:LYS:HE2	1:C:494:GLU:OE2	2.12	0.49
1:C:302:ASP:OD1	1:C:339:ARG:NH1	2.40	0.49
1:D:235:VAL:HG12	1:D:236:ILE:HG13	1.94	0.49
1:B:390:LYS:O	1:B:400:GLU:HG2	2.12	0.49
1:A:108:LYS:HE2	1:A:112:LEU:HD21	1.95	0.49
1:D:417:GLU:OE2	1:D:419:PHE:CE1	2.66	0.48
1:C:150:TYR:OH	1:C:495:MET:HA	2.13	0.48
1:D:412:ARG:HE	1:D:416:GLU:CD	2.16	0.48
1:A:460:VAL:O	1:A:464:MET:HG2	2.14	0.48
1:A:312:VAL:HG21	1:A:423:GLN:HB2	1.96	0.48
1:B:195:TRP:CE3	1:B:495:MET:CE	2.97	0.47
1:B:308:ALA:HB1	1:B:326:ILE:HD13	1.94	0.47
1:B:490:GLY:O	1:D:282:ARG:NH2	2.48	0.47
1:B:143:VAL:HG21	1:B:190:LEU:HG	1.97	0.47
1:B:291:SER:HB3	1:B:446:VAL:HG12	1.97	0.47
1:D:188:PHE:HB2	1:D:192:MET:HE2	1.97	0.47
1:C:312:VAL:HG11	1:C:423:GLN:HB2	1.97	0.47
1:D:263:GLY:O	1:D:287:LEU:HA	2.15	0.46
1:B:335:GLU:HG3	1:B:339:ARG:HE	1.80	0.46
1:C:210:LYS:NZ	1:C:211:PRO:O	2.43	0.46
1:C:456:LYS:NZ	4:C:719:HOH:O	2.48	0.46
1:D:307:GLN:NE2	4:D:705:HOH:O	2.35	0.46
1:D:88:PHE:CZ	1:D:178:GLY:HA2	2.50	0.46
1:C:206:THR:HG22	1:C:235:VAL:HA	1.98	0.46
1:D:460:VAL:O	1:D:464:MET:HG2	2.16	0.46
1:B:460:VAL:O	1:B:464:MET:HG2	2.16	0.46
1:B:97:MET:HG2	1:B:101:GLU:HB2	1.98	0.45
1:C:208:VAL:HG13	1:C:239:LEU:HD13	1.98	0.45
1:B:213:GLU:H	1:B:213:GLU:HG2	1.54	0.45
1:D:308:ALA:HB1	1:D:326:ILE:HD13	1.97	0.45

Continued on next page...

Continued from previous page...

Atom-1	Atom-2	Interatomic distance (Å)	Clash overlap (Å)
1:D:474:TYR:CD1	1:D:475:ASN:HB3	2.51	0.45
1:A:347:ARG:HE	1:A:359:GLN:HB2	1.80	0.45
1:A:181:GLY:O	1:A:259:ILE:HA	2.17	0.45
1:C:97:MET:HG2	1:C:101:GLU:HB2	1.98	0.45
1:C:35:ILE:HD12	1:C:217:LEU:HD13	1.98	0.44
1:D:515:GLN:HG2	1:D:516:LYS:N	2.32	0.44
1:B:318:GLN:HE22	1:B:363:ILE:H	1.65	0.44
1:B:370:LYS:HE3	1:B:370:LYS:HB2	1.70	0.44
1:B:94:TRP:CH2	1:B:102:ARG:HG2	2.53	0.44
1:A:330:GLU:HG3	1:A:429:LYS:HG2	1.99	0.44
1:B:430:THR:HG22	1:B:432:ASP:H	1.83	0.44
1:D:288:GLY:HA2	1:D:320:CYS:HB2	1.99	0.44
1:D:291:SER:HB3	1:D:446:VAL:HG12	2.00	0.44
1:A:383:ALA:HB2	1:A:411:MET:HE1	1.99	0.44
1:B:467:GLY:HA3	1:B:484:GLY:O	2.18	0.44
1:A:73:ASP:O	1:A:77:ILE:HG12	2.18	0.43
1:A:263:GLY:HA3	1:A:286:GLU:O	2.18	0.43
1:C:160:MET:HA	1:D:160:MET:HA	2.01	0.43
1:C:460:VAL:O	1:C:464:MET:HG2	2.18	0.43
1:C:427:ARG:O	1:C:437:ARG:NH2	2.51	0.43
1:A:492:GLY:H	1:C:282:ARG:NH2	2.17	0.43
1:B:59:ASN:HB3	1:B:62:THR:HG22	2.01	0.43
1:B:508:THR:HG21	1:D:481:SER:HB3	2.01	0.43
1:C:288:GLY:HA2	2:C:601:NAD:O2D	2.19	0.43
1:D:111:ASP:OD2	4:D:701:HOH:O	2.21	0.43
1:D:407:VAL:HB	1:D:426:LEU:HG	2.00	0.43
1:A:55:PHE:HD1	1:A:71:GLU:HB2	1.83	0.43
1:A:183:ILE:HD12	1:A:259:ILE:HD11	2.01	0.43
1:D:302:ASP:OD1	1:D:339:ARG:NH1	2.51	0.43
1:D:368:TYR:OH	1:D:391:GLY:HA3	2.19	0.43
1:A:415:LYS:HE2	1:A:415:LYS:HB3	1.72	0.42
1:B:335:GLU:CG	1:B:339:ARG:HE	2.32	0.42
1:C:55:PHE:HD1	1:C:71:GLU:HB2	1.83	0.42
1:D:108:LYS:HA	1:D:108:LYS:HD2	1.85	0.42
1:D:73:ASP:O	1:D:77:ILE:HG12	2.19	0.42
1:B:341:VAL:HG12	1:B:345:LYS:HD2	2.02	0.42
2:C:601:NAD:H8A	2:C:601:NAD:H2B	1.89	0.42
1:A:104:ARG:HA	1:A:104:ARG:HD2	1.70	0.42
1:B:183:ILE:HD12	1:B:259:ILE:HD11	2.02	0.42
1:C:458:LEU:HB2	4:C:737:HOH:O	2.19	0.42
1:B:35:ILE:HD12	1:B:217:LEU:HD13	2.02	0.42

Continued on next page...

Continued from previous page...

Atom-1	Atom-2	Interatomic distance (Å)	Clash overlap (Å)
1:B:150:TYR:OH	1:B:495:MET:HA	2.20	0.42
1:D:474:TYR:HA	1:D:475:ASN:HA	1.74	0.42
1:C:263:GLY:O	1:C:287:LEU:HA	2.20	0.41
1:B:267:VAL:O	1:B:271:ILE:HG12	2.19	0.41
1:C:148:ARG:NE	4:C:708:HOH:O	2.37	0.41
1:C:181:GLY:O	1:C:259:ILE:HA	2.20	0.41
1:C:278:SER:OG	1:C:279:ASN:N	2.53	0.41
1:A:40:ILE:HG22	1:A:42:ILE:HG13	2.02	0.41
1:B:349:VAL:HG21	1:B:401:PRO:HD3	2.02	0.41
1:C:374:LEU:HD23	1:C:374:LEU:HA	1.82	0.41
1:A:88:PHE:CE2	1:A:178:GLY:HA2	2.54	0.41
1:B:148:ARG:HD3	1:C:104:ARG:HD2	2.02	0.41
1:D:286:GLU:HB3	2:D:601:NAD:C7N	2.51	0.41
1:A:264:SER:HB3	2:A:601:NAD:O3	2.20	0.41
1:C:439:ASN:O	1:C:487:LYS:NZ	2.53	0.41
1:C:394:ARG:H	1:C:394:ARG:HG3	1.64	0.41
1:C:392:LEU:HD23	1:C:392:LEU:HA	1.81	0.41
1:D:55:PHE:HD1	1:D:71:GLU:HB2	1.86	0.41
1:B:134:GLN:O	1:B:138:VAL:HB	2.20	0.41
1:B:153:TRP:CE2	1:C:156:LYS:HD3	2.55	0.41
1:D:33:LEU:HD12	1:D:33:LEU:HA	1.88	0.41
1:B:36:LYS:HD3	1:B:37:TYR:CZ	2.56	0.41
1:B:384:LYS:HB2	1:B:384:LYS:HE3	1.81	0.41
1:B:505:GLU:HG2	1:D:486:PHE:CE1	2.56	0.41
1:C:106:LEU:HD23	1:C:106:LEU:HA	1.91	0.41
1:B:195:TRP:CD2	1:B:495:MET:CE	3.04	0.40
1:C:412:ARG:HD2	1:C:416:GLU:OE2	2.21	0.40
1:A:95:ARG:NH1	1:B:518:SER:OXT	2.54	0.40
1:D:337:VAL:O	1:D:341:VAL:HG23	2.22	0.40
1:A:467:GLY:HA3	1:A:484:GLY:O	2.22	0.40
1:B:164:VAL:HG23	1:D:480:GLN:HB2	2.03	0.40
1:B:297:ALA:N	1:B:329:GLU:OE1	2.30	0.40
1:B:297:ALA:HA	1:B:332:ILE:HD13	2.04	0.40
1:C:291:SER:OG	1:C:446:VAL:HG12	2.21	0.40
1:C:383:ALA:HB2	1:C:411:MET:SD	2.61	0.40
1:A:153:TRP:CD1	1:D:156:LYS:HE3	2.55	0.40
1:A:249:ALA:O	1:A:253:HIS:HB2	2.21	0.40

All (1) symmetry-related close contacts are listed below. The label for Atom-2 includes the symmetry operator and encoded unit-cell translations to be applied.

Atom-1	Atom-2	Interatomic distance (Å)	Clash overlap (Å)
1:A:396:GLY:O	1:D:53:ARG:NH2[1_655]	2.17	0.03

5.3 Torsion angles [i](#)

5.3.1 Protein backbone [i](#)

In the following table, the Percentiles column shows the percent Ramachandran outliers of the chain as a percentile score with respect to all X-ray entries followed by that with respect to entries of similar resolution.

The Analysed column shows the number of residues for which the backbone conformation was analysed, and the total number of residues.

Mol	Chain	Analysed	Favoured	Allowed	Outliers	Percentiles	
1	A	490/493 (99%)	464 (95%)	20 (4%)	6 (1%)	13	10
1	B	490/493 (99%)	464 (95%)	24 (5%)	2 (0%)	34	37
1	C	490/493 (99%)	469 (96%)	20 (4%)	1 (0%)	47	55
1	D	490/493 (99%)	465 (95%)	22 (4%)	3 (1%)	25	26
All	All	1960/1972 (99%)	1862 (95%)	86 (4%)	12 (1%)	25	26

All (12) Ramachandran outliers are listed below:

Mol	Chain	Res	Type
1	A	33	LEU
1	B	31	PRO
1	A	31	PRO
1	A	419	PHE
1	D	33	LEU
1	D	474	TYR
1	D	516	LYS
1	A	430	THR
1	C	516	LYS
1	A	263	GLY
1	A	185	PRO
1	B	185	PRO

5.3.2 Protein sidechains [i](#)

In the following table, the Percentiles column shows the percent sidechain outliers of the chain as a percentile score with respect to all X-ray entries followed by that with respect to entries of similar

resolution.

The Analysed column shows the number of residues for which the sidechain conformation was analysed, and the total number of residues.

Mol	Chain	Analysed	Rotameric	Outliers	Percentiles	
1	A	401/402 (100%)	395 (98%)	6 (2%)	65	78
1	B	401/402 (100%)	393 (98%)	8 (2%)	55	69
1	C	401/402 (100%)	392 (98%)	9 (2%)	52	65
1	D	401/402 (100%)	394 (98%)	7 (2%)	60	74
All	All	1604/1608 (100%)	1574 (98%)	30 (2%)	57	71

All (30) residues with a non-rotameric sidechain are listed below:

Mol	Chain	Res	Type
1	A	32	ASN
1	A	107	ASP
1	A	139	ASP
1	A	419	PHE
1	A	429	LYS
1	A	478	ASN
1	B	107	ASP
1	B	108	LYS
1	B	127	ASN
1	B	210	LYS
1	B	427	ARG
1	B	432	ASP
1	B	478	ASN
1	B	495	MET
1	C	32	ASN
1	C	49	SER
1	C	107	ASP
1	C	127	ASN
1	C	164	VAL
1	C	174	HIS
1	C	334	GLU
1	C	394	ARG
1	C	419	PHE
1	D	36	LYS
1	D	127	ASN
1	D	174	HIS
1	D	390	LYS
1	D	419	PHE

Continued on next page...

Continued from previous page...

Mol	Chain	Res	Type
1	D	446	VAL
1	D	474	TYR

Sometimes sidechains can be flipped to improve hydrogen bonding and reduce clashes. All (3) such sidechains are listed below:

Mol	Chain	Res	Type
1	B	318	GLN
1	D	134	GLN
1	D	478	ASN

5.3.3 RNA [i](#)

There are no RNA molecules in this entry.

5.4 Non-standard residues in protein, DNA, RNA chains [i](#)

There are no non-standard protein/DNA/RNA residues in this entry.

5.5 Carbohydrates [i](#)

There are no monosaccharides in this entry.

5.6 Ligand geometry [i](#)

8 ligands are modelled in this entry.

In the following table, the Counts columns list the number of bonds (or angles) for which Mogul statistics could be retrieved, the number of bonds (or angles) that are observed in the model and the number of bonds (or angles) that are defined in the Chemical Component Dictionary. The Link column lists molecule types, if any, to which the group is linked. The Z score for a bond length (or angle) is the number of standard deviations the observed value is removed from the expected value. A bond length (or angle) with $|Z| > 2$ is considered an outlier worth inspection. RMSZ is the root-mean-square of all Z scores of the bond lengths (or angles).

Mol	Type	Chain	Res	Link	Bond lengths			Bond angles		
					Counts	RMSZ	# Z > 2	Counts	RMSZ	# Z > 2
3	CQY	B	602	-	28,33,33	2.01	2 (7%)	34,46,46	1.82	6 (17%)
2	NAD	D	601	-	42,48,48	5.30	17 (40%)	50,73,73	1.42	8 (16%)
3	CQY	D	602	-	28,33,33	2.01	2 (7%)	34,46,46	2.08	8 (23%)

Mol	Type	Chain	Res	Link	Bond lengths			Bond angles		
					Counts	RMSZ	# Z > 2	Counts	RMSZ	# Z > 2
2	NAD	C	601	-	42,48,48	5.29	17 (40%)	50,73,73	1.31	4 (8%)
2	NAD	A	601	-	42,48,48	5.33	16 (38%)	50,73,73	1.35	4 (8%)
2	NAD	B	601	-	42,48,48	5.30	16 (38%)	50,73,73	1.27	2 (4%)
3	CQY	A	602	-	28,33,33	1.99	2 (7%)	34,46,46	1.58	6 (17%)
3	CQY	C	602	-	28,33,33	2.00	2 (7%)	34,46,46	1.93	9 (26%)

In the following table, the Chirals column lists the number of chiral outliers, the number of chiral centers analysed, the number of these observed in the model and the number defined in the Chemical Component Dictionary. Similar counts are reported in the Torsion and Rings columns. '-' means no outliers of that kind were identified.

Mol	Type	Chain	Res	Link	Chirals	Torsions	Rings
3	CQY	B	602	-	-	7/15/40/40	0/4/4/4
2	NAD	D	601	-	-	5/26/62/62	0/5/5/5
3	CQY	D	602	-	-	5/15/40/40	0/4/4/4
2	NAD	C	601	-	-	2/26/62/62	0/5/5/5
2	NAD	A	601	-	-	4/26/62/62	0/5/5/5
2	NAD	B	601	-	-	5/26/62/62	0/5/5/5
3	CQY	A	602	-	-	3/15/40/40	0/4/4/4
3	CQY	C	602	-	-	3/15/40/40	0/4/4/4

All (74) bond length outliers are listed below:

Mol	Chain	Res	Type	Atoms	Z	Observed(Å)	Ideal(Å)
2	A	601	NAD	C2B-C1B	-16.58	1.28	1.53
2	C	601	NAD	C2D-C1D	-16.42	1.28	1.53
2	A	601	NAD	C2D-C1D	-16.33	1.29	1.53
2	B	601	NAD	C2B-C1B	-16.24	1.29	1.53
2	C	601	NAD	C2B-C1B	-16.18	1.29	1.53
2	D	601	NAD	C2B-C1B	-16.00	1.29	1.53
2	B	601	NAD	C2D-C1D	-15.96	1.29	1.53
2	D	601	NAD	C2D-C1D	-15.89	1.29	1.53
2	B	601	NAD	O4B-C1B	15.60	1.62	1.41
2	C	601	NAD	O4B-C1B	15.50	1.62	1.41
2	D	601	NAD	O4B-C1B	15.32	1.62	1.41
2	A	601	NAD	O4B-C1B	15.07	1.62	1.41
2	D	601	NAD	O4D-C1D	14.95	1.61	1.41
2	A	601	NAD	O4D-C1D	14.78	1.61	1.41
2	B	601	NAD	O4D-C1D	14.69	1.61	1.41

Continued on next page...

Continued from previous page...

Mol	Chain	Res	Type	Atoms	Z	Observed(Å)	Ideal(Å)
2	C	601	NAD	O4D-C1D	14.43	1.61	1.41
3	C	602	CQY	O29-N28	9.96	1.39	1.22
3	B	602	CQY	O29-N28	9.95	1.39	1.22
3	D	602	CQY	O29-N28	9.92	1.39	1.22
3	A	602	CQY	O29-N28	9.86	1.39	1.22
2	D	601	NAD	O4B-C4B	-6.41	1.30	1.45
2	B	601	NAD	C7N-N7N	6.29	1.45	1.33
2	A	601	NAD	O4B-C4B	-6.25	1.31	1.45
2	D	601	NAD	C7N-N7N	6.25	1.44	1.33
2	C	601	NAD	C7N-N7N	6.20	1.44	1.33
2	A	601	NAD	C7N-N7N	6.12	1.44	1.33
2	C	601	NAD	O4D-C4D	-5.97	1.31	1.45
2	B	601	NAD	O4B-C4B	-5.88	1.31	1.45
2	B	601	NAD	O4D-C4D	-5.88	1.31	1.45
2	A	601	NAD	O4D-C4D	-5.87	1.31	1.45
2	D	601	NAD	O4D-C4D	-5.77	1.32	1.45
2	C	601	NAD	O4B-C4B	-5.68	1.32	1.45
2	D	601	NAD	C2N-N1N	3.53	1.39	1.35
2	B	601	NAD	C3N-C7N	3.52	1.55	1.50
2	D	601	NAD	C3N-C7N	3.48	1.55	1.50
2	C	601	NAD	C3N-C7N	3.38	1.55	1.50
2	A	601	NAD	C3N-C7N	3.31	1.55	1.50
2	C	601	NAD	O3D-C3D	-3.30	1.35	1.43
2	A	601	NAD	O3D-C3D	-3.29	1.35	1.43
2	A	601	NAD	C2A-N3A	3.27	1.37	1.32
2	D	601	NAD	O3D-C3D	-3.25	1.35	1.43
2	B	601	NAD	O3D-C3D	-3.20	1.35	1.43
2	D	601	NAD	C2A-N3A	3.17	1.37	1.32
2	B	601	NAD	O3B-C3B	-3.13	1.35	1.43
2	B	601	NAD	C2N-N1N	3.12	1.38	1.35
2	D	601	NAD	O3B-C3B	-3.10	1.35	1.43
2	C	601	NAD	O3B-C3B	-3.06	1.35	1.43
2	A	601	NAD	O3B-C3B	-3.03	1.35	1.43
2	A	601	NAD	C2N-N1N	2.95	1.38	1.35
3	A	602	CQY	C20-N28	-2.88	1.40	1.45
3	B	602	CQY	C20-N28	-2.87	1.40	1.45
2	C	601	NAD	C2N-N1N	2.84	1.38	1.35
3	D	602	CQY	C20-N28	-2.80	1.40	1.45
2	C	601	NAD	C6A-N6A	2.71	1.43	1.34
2	B	601	NAD	C2A-N3A	2.70	1.36	1.32
2	D	601	NAD	O2B-C2B	2.69	1.49	1.43
2	B	601	NAD	C6A-N6A	2.68	1.43	1.34

Continued on next page...

Continued from previous page...

Mol	Chain	Res	Type	Atoms	Z	Observed(Å)	Ideal(Å)
2	B	601	NAD	O2B-C2B	2.66	1.49	1.43
3	C	602	CQY	C20-N28	-2.65	1.40	1.45
2	C	601	NAD	O2B-C2B	2.64	1.49	1.43
2	D	601	NAD	C6A-N6A	2.57	1.43	1.34
2	A	601	NAD	C6A-N6A	2.56	1.43	1.34
2	C	601	NAD	C5B-C4B	2.55	1.59	1.51
2	A	601	NAD	O2B-C2B	2.53	1.48	1.43
2	C	601	NAD	C2A-N3A	2.50	1.36	1.32
2	B	601	NAD	O2D-C2D	2.43	1.48	1.43
2	A	601	NAD	O2D-C2D	2.43	1.48	1.43
2	C	601	NAD	O2D-C2D	2.34	1.48	1.43
2	D	601	NAD	C5A-C4A	-2.24	1.35	1.40
2	D	601	NAD	O2D-C2D	2.22	1.48	1.43
2	D	601	NAD	C2A-N1A	2.13	1.37	1.33
2	C	601	NAD	C5A-C4A	-2.11	1.35	1.40
2	A	601	NAD	C5A-C4A	-2.10	1.35	1.40
2	B	601	NAD	C5A-C4A	-2.02	1.35	1.40

All (47) bond angle outliers are listed below:

Mol	Chain	Res	Type	Atoms	Z	Observed(°)	Ideal(°)
3	D	602	CQY	C22-C21-N23	-5.86	113.85	122.52
2	A	601	NAD	N3A-C2A-N1A	-5.85	119.53	128.68
2	D	601	NAD	N3A-C2A-N1A	-5.75	119.69	128.68
2	C	601	NAD	N3A-C2A-N1A	-5.42	120.20	128.68
3	C	602	CQY	C22-C21-N23	-5.30	114.68	122.52
2	B	601	NAD	N3A-C2A-N1A	-5.06	120.77	128.68
3	B	602	CQY	C22-C21-N23	-4.85	115.35	122.52
3	C	602	CQY	C16-C15-N14	-4.58	101.81	110.70
3	B	602	CQY	C15-N14-C13	4.43	121.29	111.52
3	D	602	CQY	C22-C17-N14	-4.42	116.57	121.33
3	D	602	CQY	C16-C15-N14	-4.32	102.32	110.70
3	D	602	CQY	C15-N14-C13	4.29	120.99	111.52
3	C	602	CQY	C15-N14-C13	4.24	120.89	111.52
3	A	602	CQY	C22-C21-N23	-3.92	116.72	122.52
2	A	601	NAD	C5A-C6A-N6A	3.74	126.03	120.35
2	C	601	NAD	C5A-C6A-N6A	3.66	125.91	120.35
3	A	602	CQY	C16-C15-N14	-3.63	103.64	110.70
2	B	601	NAD	C5A-C6A-N6A	3.57	125.78	120.35
3	B	602	CQY	C16-C15-N14	-3.51	103.89	110.70
3	B	602	CQY	C12-C13-N14	-3.49	103.93	110.70
3	A	602	CQY	C15-N14-C13	3.44	119.11	111.52

Continued on next page...

Continued from previous page...

Mol	Chain	Res	Type	Atoms	Z	Observed(°)	Ideal(°)
2	D	601	NAD	C5A-C6A-N6A	3.41	125.53	120.35
3	B	602	CQY	C27-N23-C24	3.32	117.49	111.46
3	A	602	CQY	C12-C13-N14	-3.06	104.75	110.70
3	C	602	CQY	C22-C17-N14	-3.03	118.07	121.33
3	C	602	CQY	C27-N23-C24	3.01	116.93	111.46
3	D	602	CQY	C27-N23-C24	2.90	116.73	111.46
3	A	602	CQY	C27-N23-C24	2.89	116.70	111.46
3	D	602	CQY	C13-C12-N11	-2.84	104.34	110.44
3	C	602	CQY	C13-C12-N11	-2.69	104.67	110.44
3	D	602	CQY	C16-N11-C12	2.65	117.73	112.62
3	C	602	CQY	C16-N11-C12	2.65	117.72	112.62
3	C	602	CQY	C12-C13-N14	-2.57	105.70	110.70
3	B	602	CQY	C16-N11-C12	2.54	117.51	112.62
3	D	602	CQY	C12-C13-N14	-2.54	105.78	110.70
2	C	601	NAD	C3N-C7N-N7N	2.34	120.55	117.75
2	D	601	NAD	C5D-C4D-C3D	-2.33	106.44	115.18
3	C	602	CQY	C26-C27-N23	-2.31	100.52	103.45
2	A	601	NAD	N6A-C6A-N1A	-2.27	113.86	118.57
2	D	601	NAD	C3N-C7N-N7N	2.23	120.42	117.75
2	D	601	NAD	O7N-C7N-N7N	-2.18	119.47	122.58
2	D	601	NAD	C3D-C2D-C1D	2.14	104.19	100.98
3	A	602	CQY	C18-C17-N14	-2.07	118.53	121.38
2	D	601	NAD	N6A-C6A-N1A	-2.05	114.32	118.57
2	D	601	NAD	C6N-N1N-C2N	-2.05	120.11	121.97
2	C	601	NAD	N6A-C6A-N1A	-2.04	114.34	118.57
2	A	601	NAD	C4A-C5A-N7A	-2.03	107.28	109.40

There are no chirality outliers.

All (34) torsion outliers are listed below:

Mol	Chain	Res	Type	Atoms
2	A	601	NAD	PN-O3-PA-O5B
2	B	601	NAD	C5B-O5B-PA-O1A
2	B	601	NAD	C5B-O5B-PA-O3
2	D	601	NAD	C5D-O5D-PN-O3
2	D	601	NAD	C5D-O5D-PN-O2N
3	A	602	CQY	C22-C21-N23-C24
3	B	602	CQY	C20-C21-N23-C27
3	B	602	CQY	C22-C21-N23-C27
3	C	602	CQY	C20-C21-N23-C27
3	C	602	CQY	C22-C21-N23-C27
3	D	602	CQY	C20-C21-N23-C27

Continued on next page...

Continued from previous page...

Mol	Chain	Res	Type	Atoms
3	D	602	CQY	C22-C21-N23-C27
3	B	602	CQY	C05-C09-N11-C12
2	B	601	NAD	O4D-C4D-C5D-O5D
2	B	601	NAD	C3D-C4D-C5D-O5D
3	B	602	CQY	O10-C09-N11-C12
3	A	602	CQY	C19-C20-N28-O29
2	C	601	NAD	C4D-C5D-O5D-PN
2	D	601	NAD	C4D-C5D-O5D-PN
3	B	602	CQY	C19-C20-N28-O29
3	D	602	CQY	C19-C20-N28-O29
2	A	601	NAD	C4D-C5D-O5D-PN
3	D	602	CQY	O10-C09-N11-C12
2	D	601	NAD	PA-O3-PN-O1N
3	D	602	CQY	C05-C09-N11-C12
3	A	602	CQY	C20-C21-N23-C24
2	B	601	NAD	C4D-C5D-O5D-PN
3	B	602	CQY	O10-C09-N11-C16
2	A	601	NAD	PA-O3-PN-O2N
3	B	602	CQY	C05-C09-N11-C16
2	A	601	NAD	PA-O3-PN-O1N
3	C	602	CQY	C19-C20-N28-O29
2	C	601	NAD	C5B-O5B-PA-O1A
2	D	601	NAD	C5B-O5B-PA-O1A

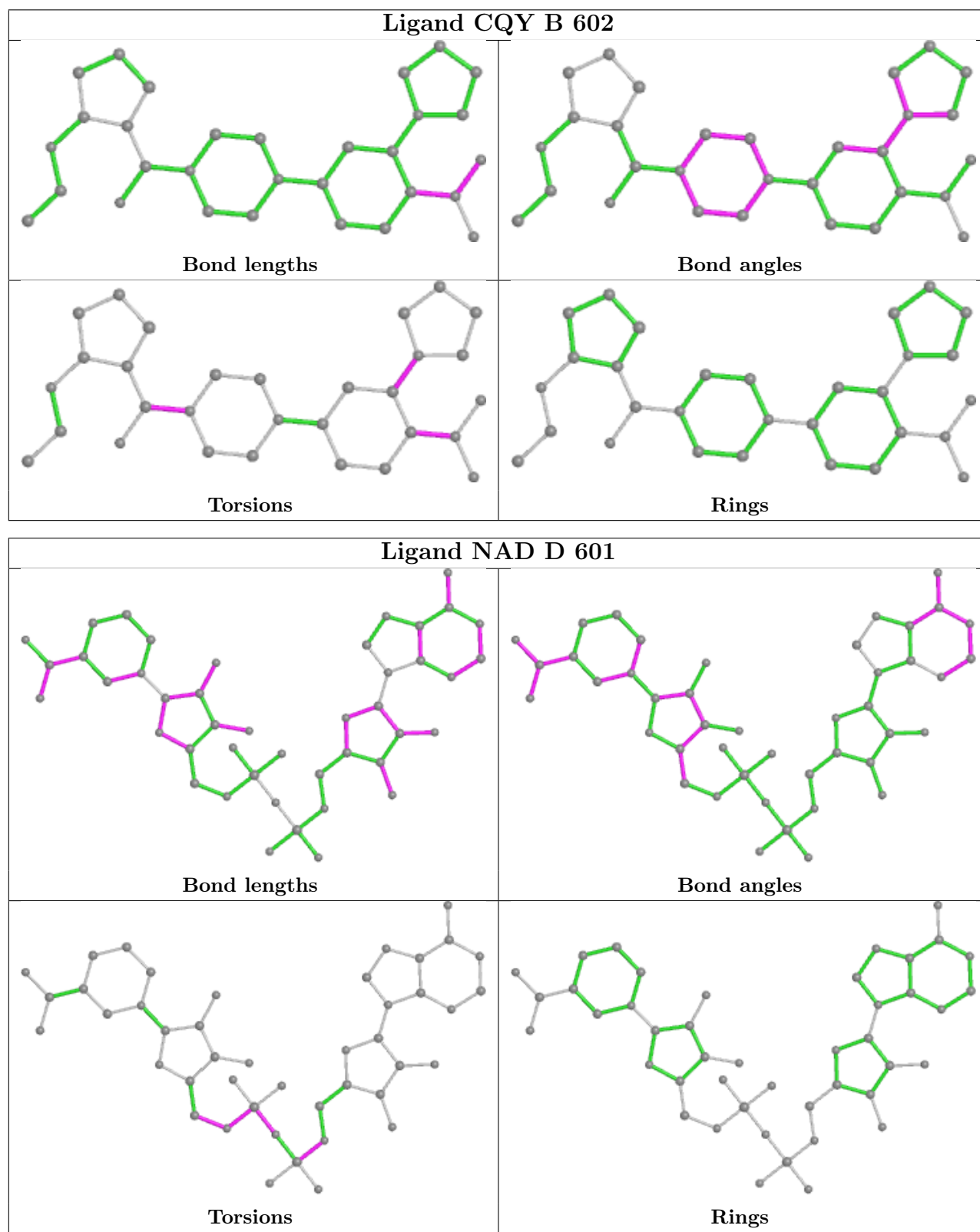
There are no ring outliers.

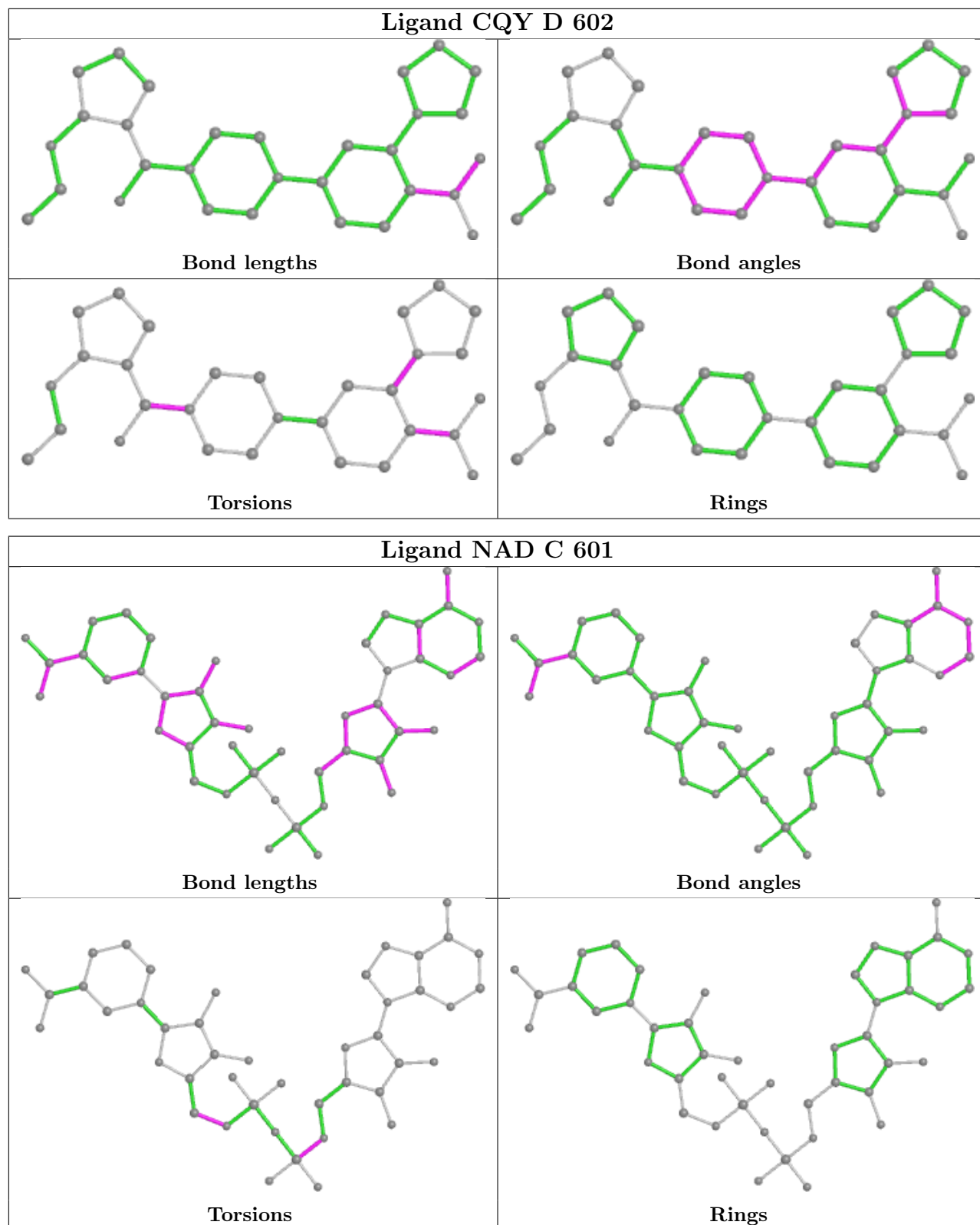
3 monomers are involved in 13 short contacts:

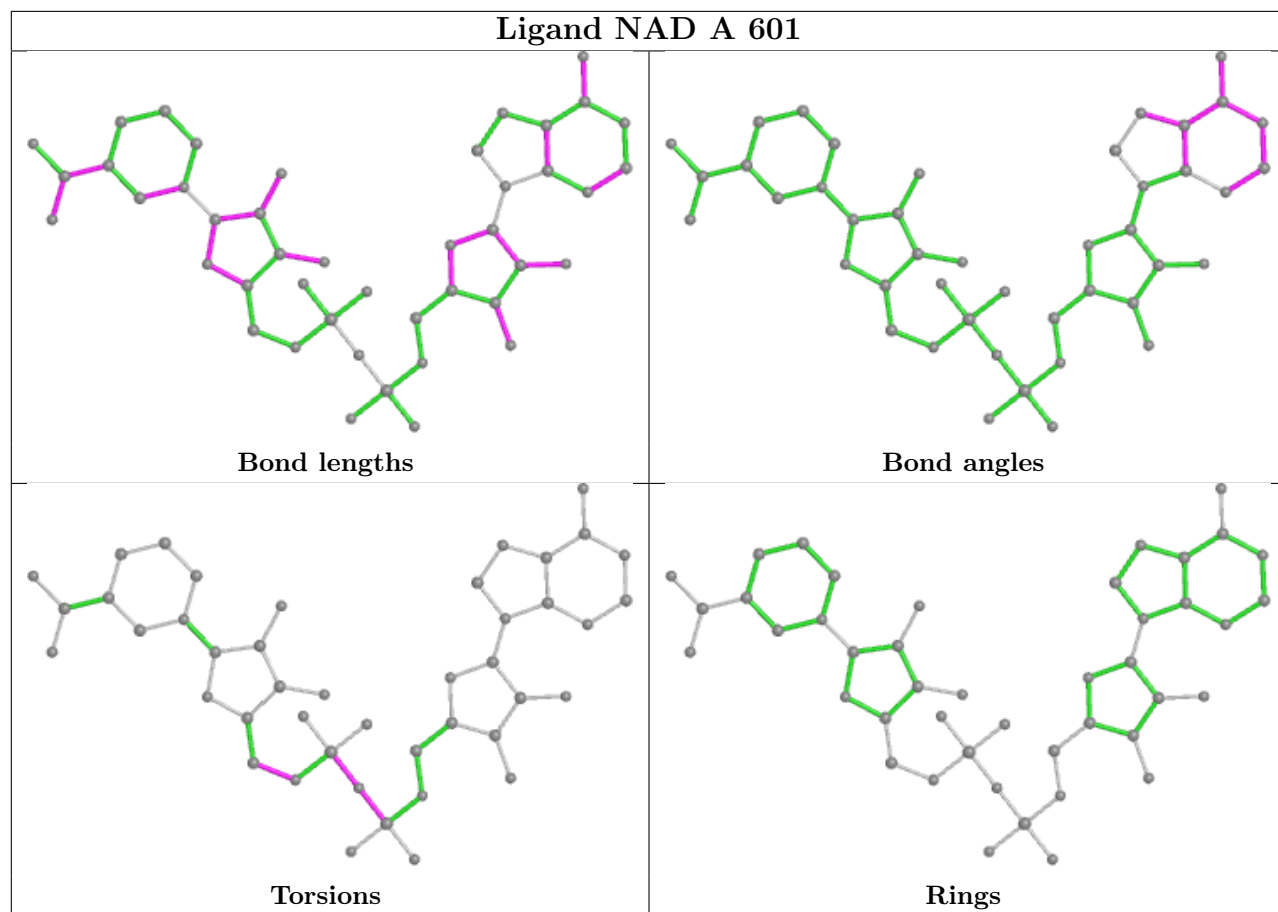
Mol	Chain	Res	Type	Clashes	Symm-Clashes
2	D	601	NAD	5	0
2	C	601	NAD	2	0
2	A	601	NAD	6	0

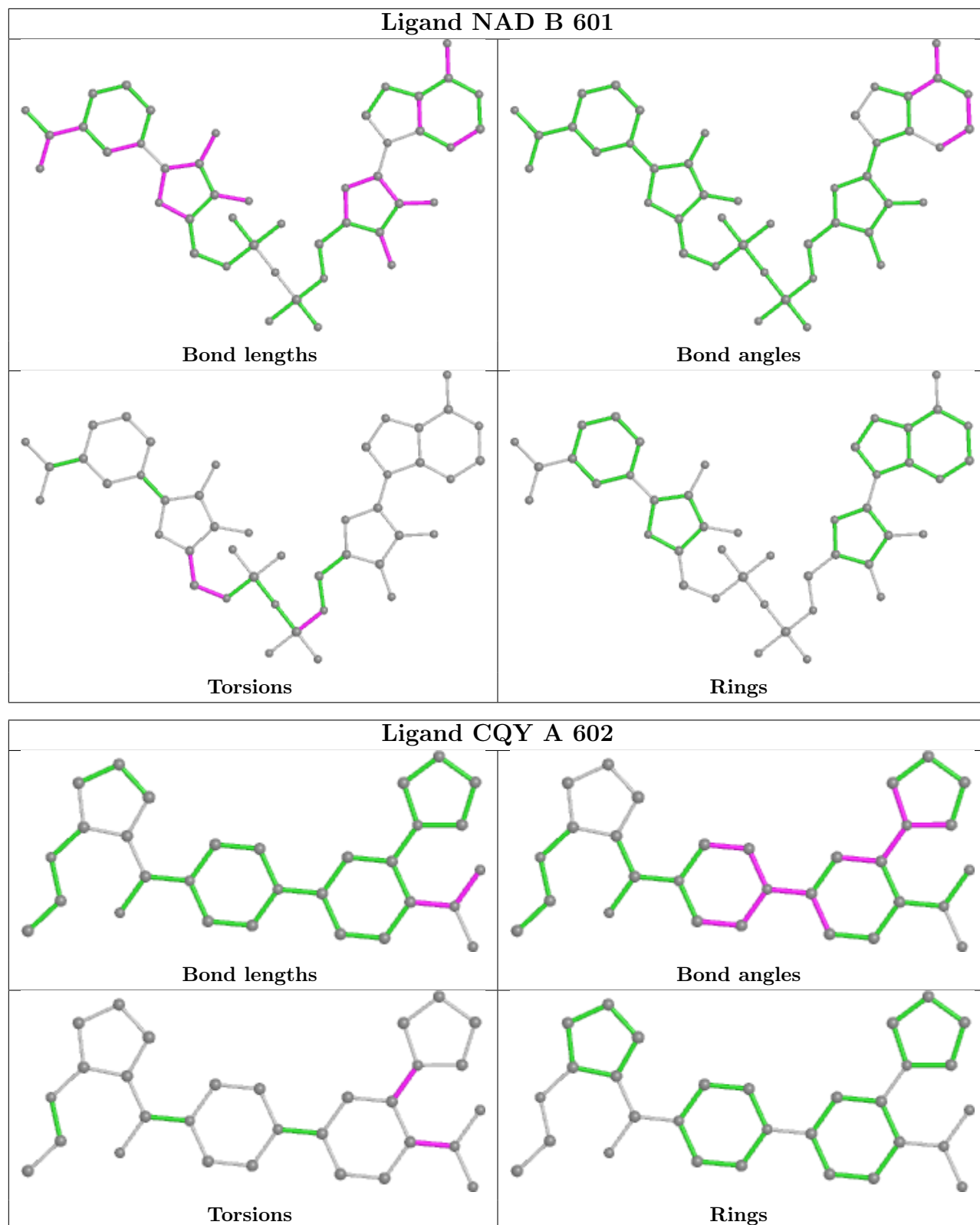
The following is a two-dimensional graphical depiction of Mogul quality analysis of bond lengths, bond angles, torsion angles, and ring geometry for all instances of the Ligand of Interest. In addition, ligands with molecular weight > 250 and outliers as shown on the validation Tables will also be included. For torsion angles, if less than 5% of the Mogul distribution of torsion angles is within 10 degrees of the torsion angle in question, then that torsion angle is considered an outlier. Any bond that is central to one or more torsion angles identified as an outlier by Mogul will be highlighted in the graph. For rings, the root-mean-square deviation (RMSD) between the ring in question and similar rings identified by Mogul is calculated over all ring torsion angles. If the average RMSD is greater than 60 degrees and the minimal RMSD between the ring in question and any Mogul-identified rings is also greater than 60 degrees, then that ring is considered an outlier.

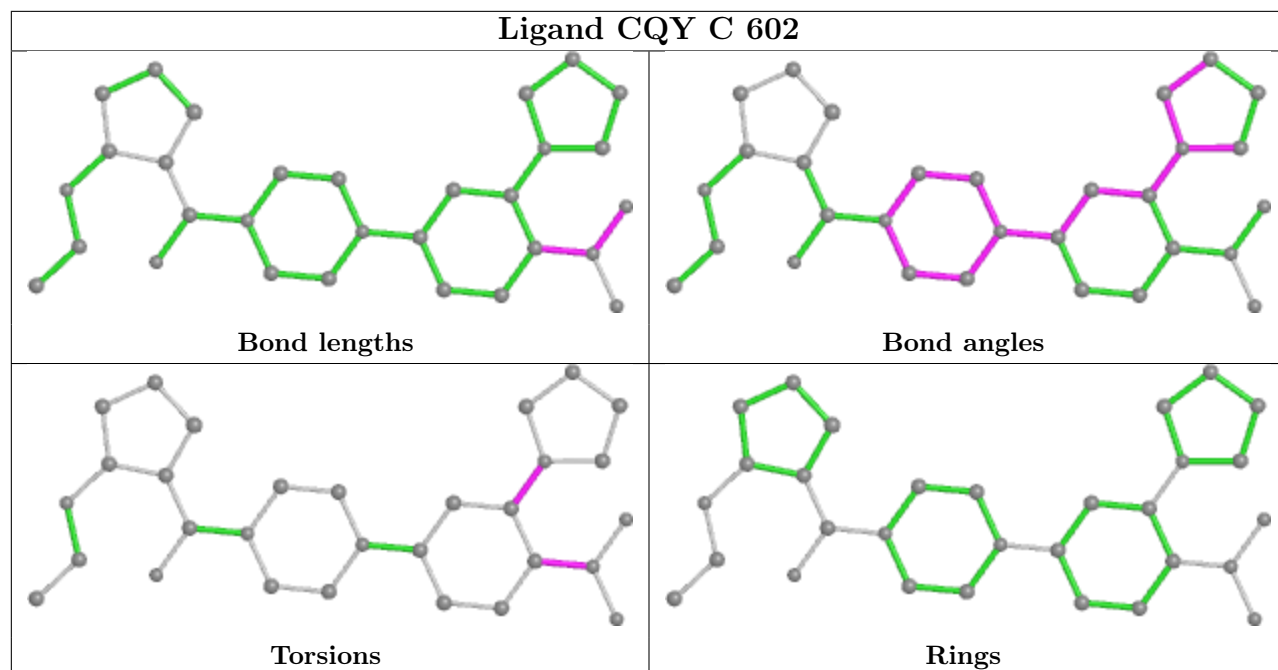
The outliers are highlighted in purple. The color gray indicates Mogul did not find sufficient equivalents in the CSD to analyse the geometry.











5.7 Other polymers [i](#)

There are no such residues in this entry.

5.8 Polymer linkage issues [i](#)

There are no chain breaks in this entry.

6 Fit of model and data [i](#)

6.1 Protein, DNA and RNA chains [i](#)

In the following table, the column labelled ‘#RSRZ> 2’ contains the number (and percentage) of RSRZ outliers, followed by percent RSRZ outliers for the chain as percentile scores relative to all X-ray entries and entries of similar resolution. The OWAB column contains the minimum, median, 95th percentile and maximum values of the occupancy-weighted average B-factor per residue. The column labelled ‘Q< 0.9’ lists the number of (and percentage) of residues with an average occupancy less than 0.9.

Mol	Chain	Analysed	<RSRZ>	#RSRZ>2	OWAB(Å ²)	Q<0.9
1	A	492/493 (99%)	-0.46	0 100 100	17, 27, 39, 63	0
1	B	492/493 (99%)	-0.34	2 (0%) 92 91	19, 34, 48, 71	0
1	C	492/493 (99%)	-0.41	0 100 100	19, 30, 42, 54	0
1	D	492/493 (99%)	-0.48	1 (0%) 95 94	18, 27, 38, 64	0
All	All	1968/1972 (99%)	-0.42	3 (0%) 95 94	17, 29, 43, 71	0

All (3) RSRZ outliers are listed below:

Mol	Chain	Res	Type	RSRZ
1	D	518	SER	2.6
1	B	518	SER	2.5
1	B	394	ARG	2.5

6.2 Non-standard residues in protein, DNA, RNA chains [i](#)

There are no non-standard protein/DNA/RNA residues in this entry.

6.3 Carbohydrates [i](#)

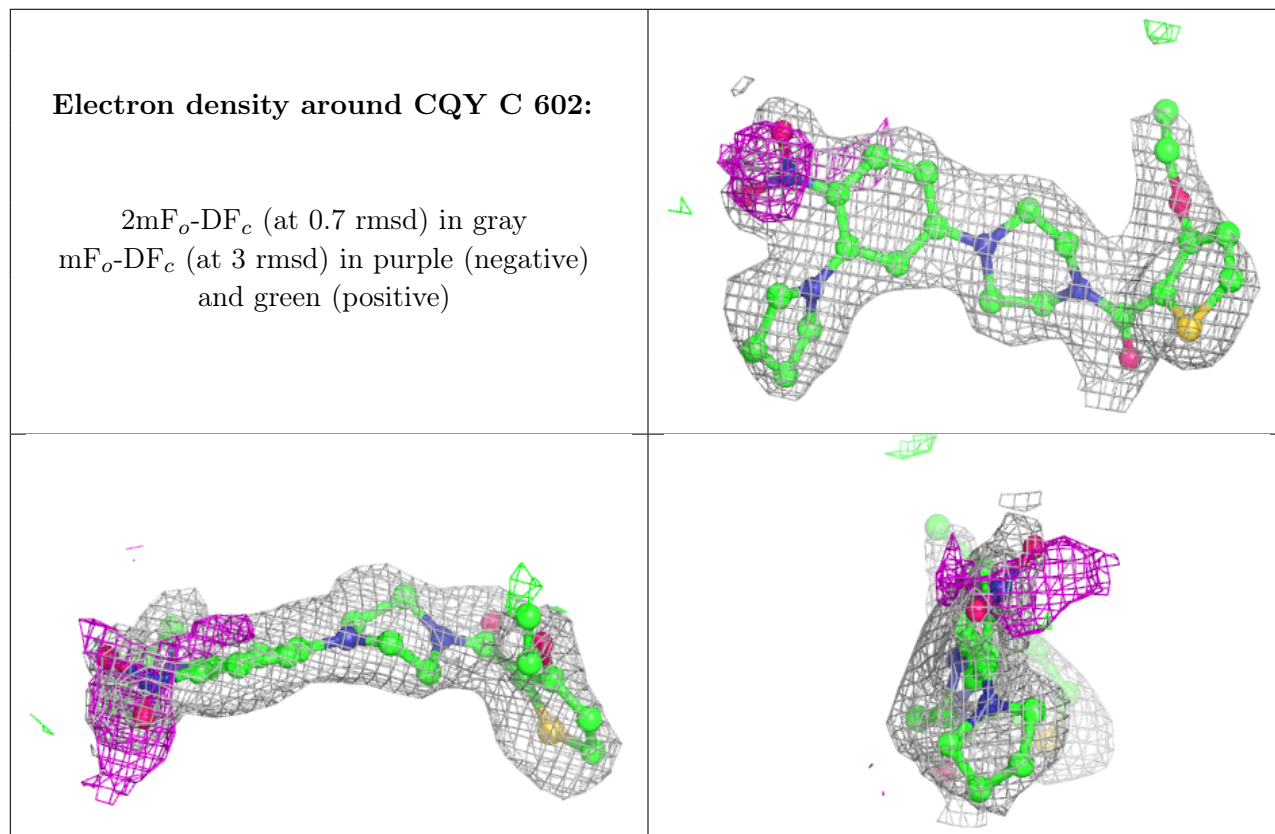
There are no monosaccharides in this entry.

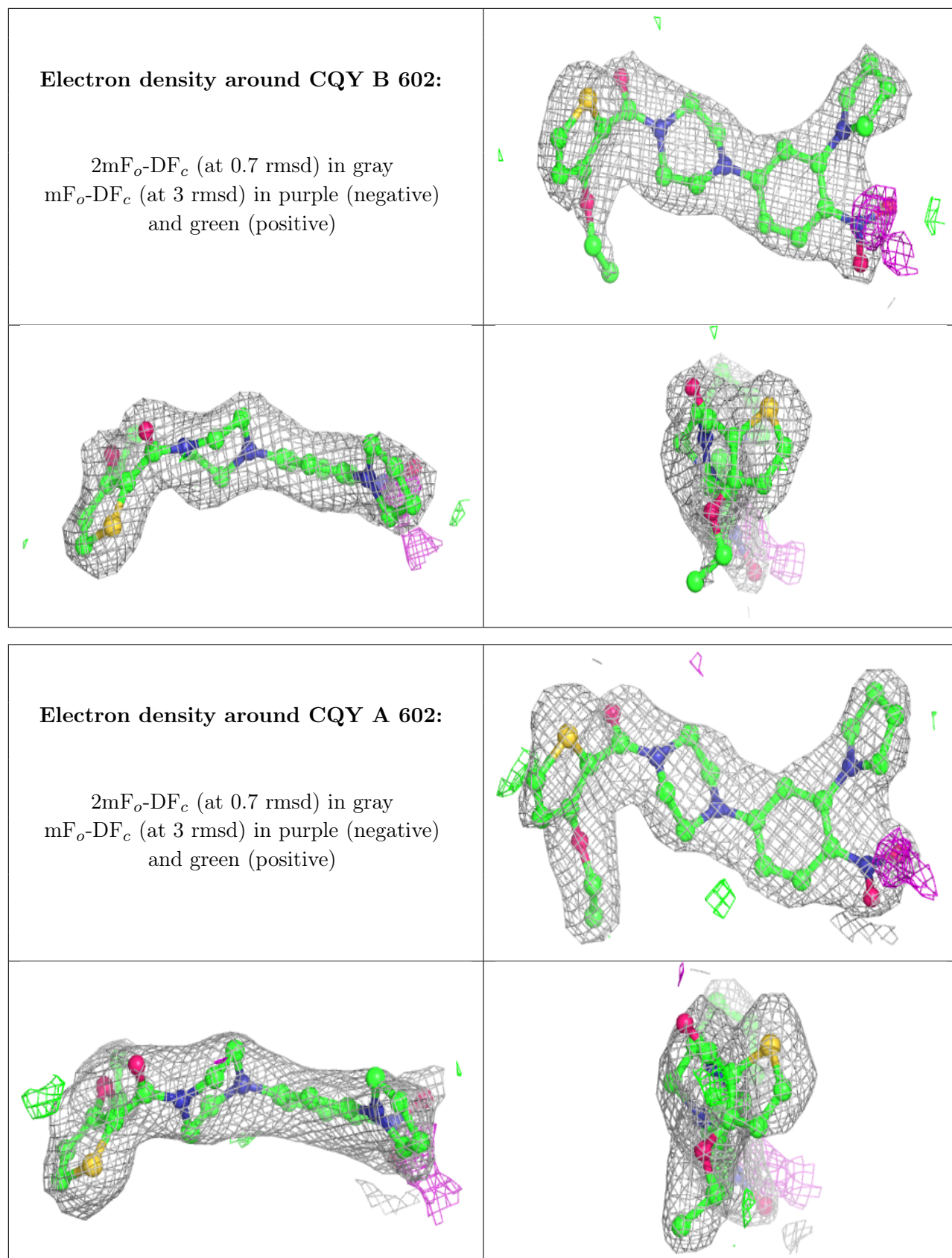
6.4 Ligands [i](#)

In the following table, the Atoms column lists the number of modelled atoms in the group and the number defined in the chemical component dictionary. The B-factors column lists the minimum, median, 95th percentile and maximum values of B factors of atoms in the group. The column labelled ‘Q< 0.9’ lists the number of atoms with occupancy less than 0.9.

Mol	Type	Chain	Res	Atoms	RSCC	RSR	B-factors(\AA^2)	Q<0.9
3	CQY	C	602	30/30	0.87	0.17	27,39,52,56	0
3	CQY	B	602	30/30	0.88	0.21	38,43,51,56	0
3	CQY	A	602	30/30	0.91	0.15	33,39,52,56	0
3	CQY	D	602	30/30	0.91	0.15	33,39,47,48	0
2	NAD	C	601	44/44	0.96	0.10	19,27,31,41	0
2	NAD	D	601	44/44	0.96	0.11	19,27,33,38	0
2	NAD	B	601	44/44	0.96	0.11	24,30,42,50	0
2	NAD	A	601	44/44	0.97	0.10	20,27,36,43	0

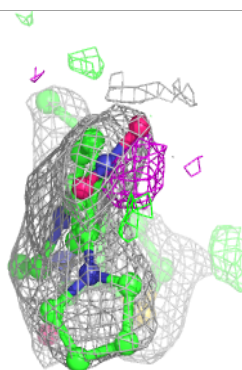
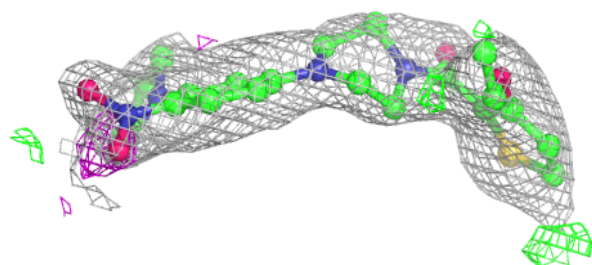
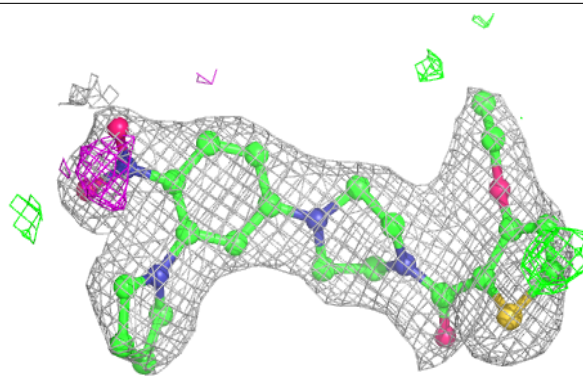
The following is a graphical depiction of the model fit to experimental electron density of all instances of the Ligand of Interest. In addition, ligands with molecular weight > 250 and outliers as shown on the geometry validation Tables will also be included. Each fit is shown from different orientation to approximate a three-dimensional view.



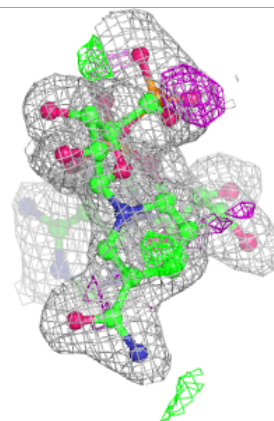
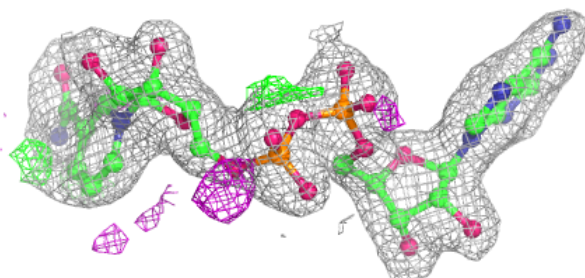
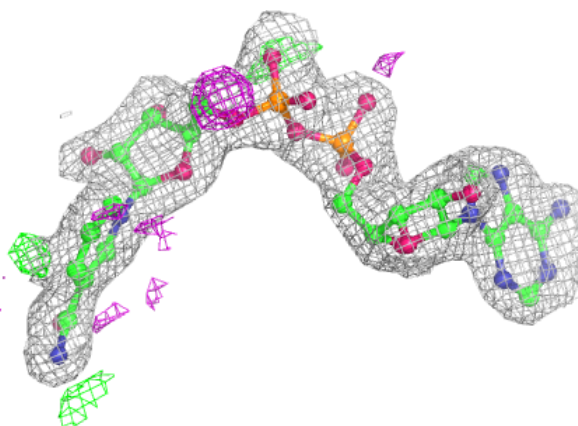


Electron density around CQY D 602:

$2mF_o-DF_c$ (at 0.7 rmsd) in gray
 mF_o-DF_c (at 3 rmsd) in purple (negative)
and green (positive)

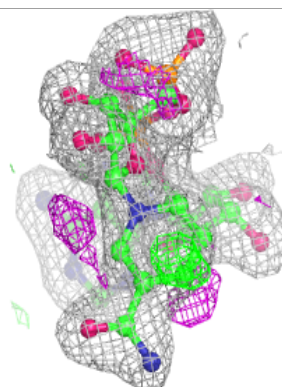
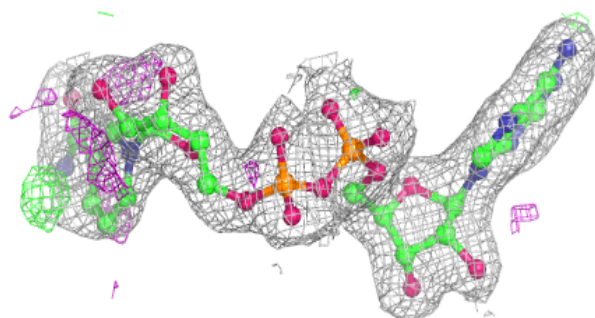
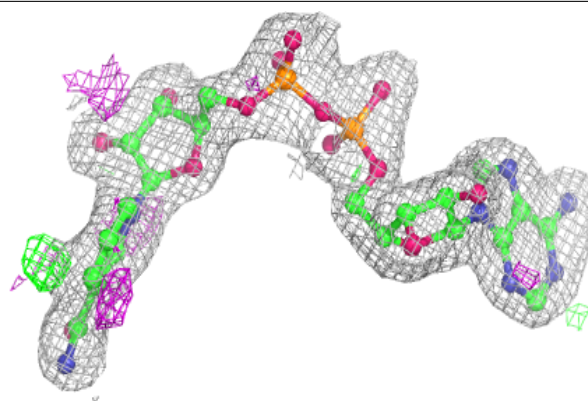
**Electron density around NAD C 601:**

$2mF_o-DF_c$ (at 0.7 rmsd) in gray
 mF_o-DF_c (at 3 rmsd) in purple (negative)
and green (positive)

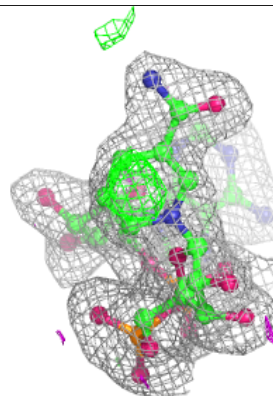
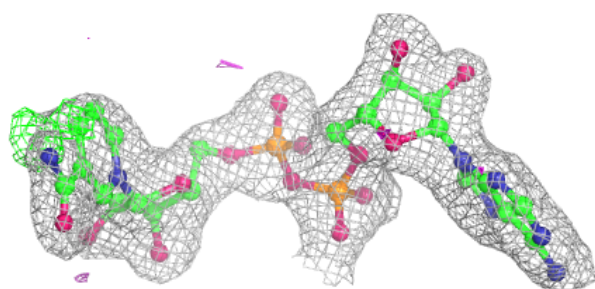
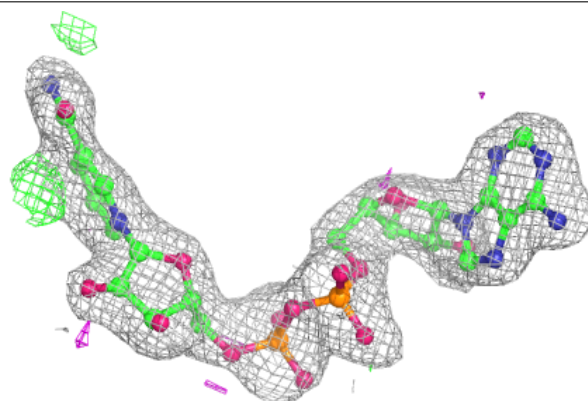


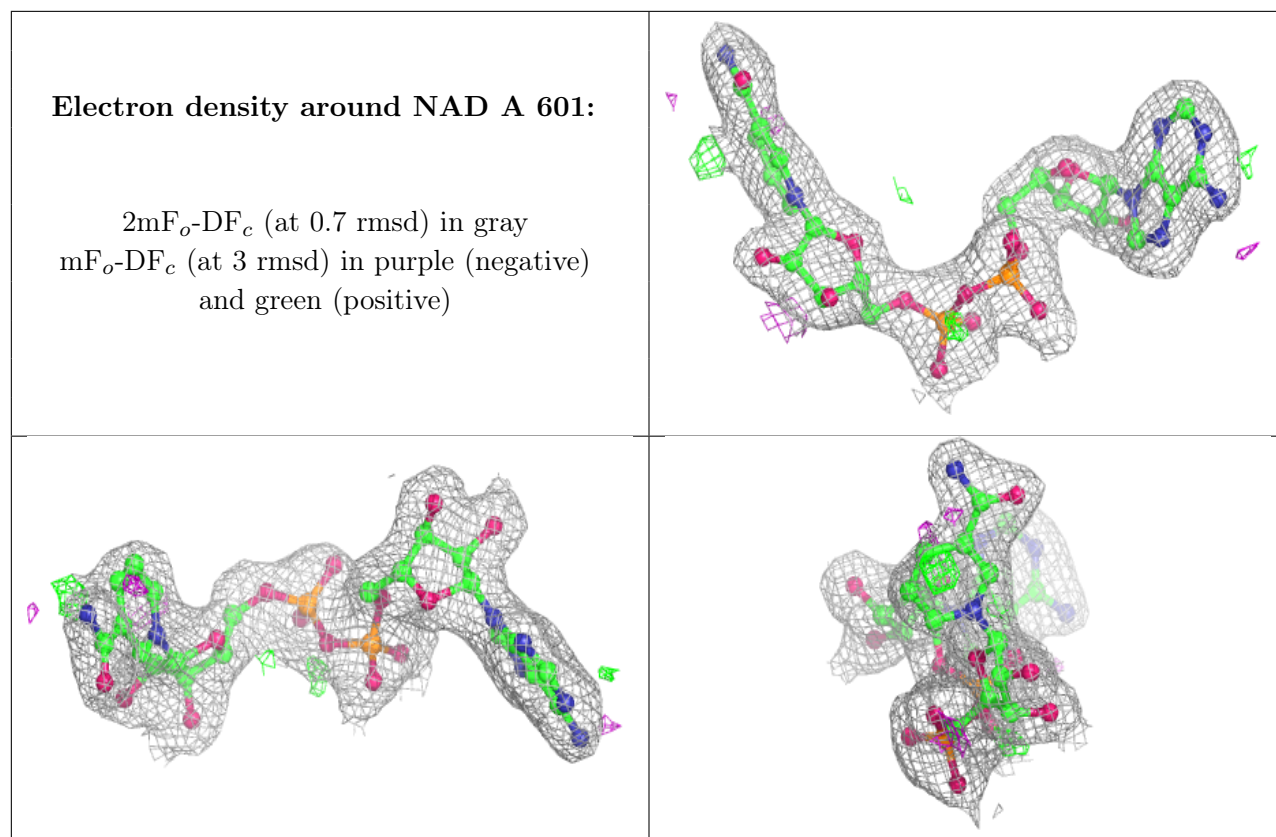
Electron density around NAD D 601:

$2mF_o-DF_c$ (at 0.7 rmsd) in gray
 mF_o-DF_c (at 3 rmsd) in purple (negative)
and green (positive)

**Electron density around NAD B 601:**

$2mF_o-DF_c$ (at 0.7 rmsd) in gray
 mF_o-DF_c (at 3 rmsd) in purple (negative)
and green (positive)





6.5 Other polymers [i](#)

There are no such residues in this entry.