



# Full wwPDB X-ray Structure Validation Report ⓘ

Dec 14, 2024 – 11:03 PM EST

PDB ID : 2B7P  
Title : Crystal structure of quinolinic acid phosphoribosyltransferase from *Helicobacter pylori* with phthalic acid  
Authors : Kim, M.K.; Im, Y.J.; Lee, J.H.; Eom, S.H.  
Deposited on : 2005-10-05  
Resolution : 2.51 Å (reported)

This is a Full wwPDB X-ray Structure Validation Report for a publicly released PDB entry.

We welcome your comments at [validation@mail.wwpdb.org](mailto:validation@mail.wwpdb.org)

A user guide is available at

<https://www.wwpdb.org/validation/2017/XrayValidationReportHelp>

with specific help available everywhere you see the ⓘ symbol.

The types of validation reports are described at

<http://www.wwpdb.org/validation/2017/FAQs#types>.

---

The following versions of software and data (see [references ⓘ](#)) were used in the production of this report:

MolProbity : 4.02b-467  
Mogul : 2022.3.0, CSD as543be (2022)  
Xtriage (Phenix) : 1.21  
EDS : 3.0  
Percentile statistics : 20231227.v01 (using entries in the PDB archive December 27th 2023)  
CCP4 : 9.0.004 (Gargrove)  
Density-Fitness : 1.0.11  
Ideal geometry (proteins) : Engh & Huber (2001)  
Ideal geometry (DNA, RNA) : Parkinson et al. (1996)  
Validation Pipeline (wwPDB-VP) : 2.40

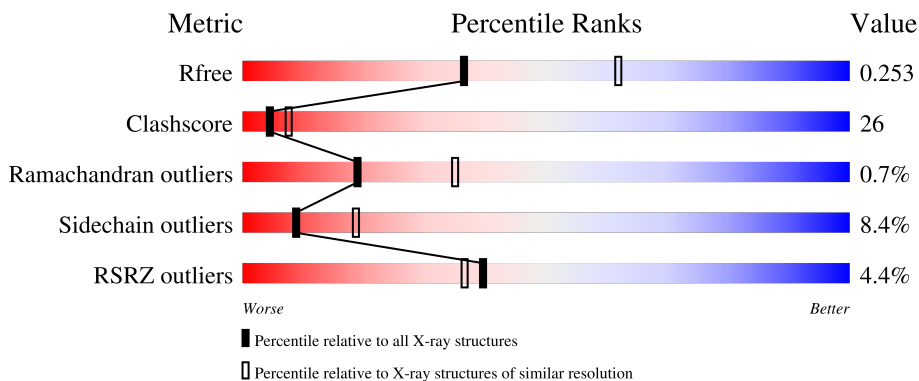
# 1 Overall quality at a glance

The following experimental techniques were used to determine the structure:

*X-RAY DIFFRACTION*

The reported resolution of this entry is 2.51 Å.

Percentile scores (ranging between 0-100) for global validation metrics of the entry are shown in the following graphic. The table shows the number of entries on which the scores are based.



Metric	Whole archive (#Entries)	Similar resolution (#Entries, resolution range(Å))
$R_{free}$	164625	5504 (2.50-2.50)
Clashscore	180529	6282 (2.50-2.50)
Ramachandran outliers	177936	6191 (2.50-2.50)
Sidechain outliers	177891	6193 (2.50-2.50)
RSRZ outliers	164620	5504 (2.50-2.50)

The table below summarises the geometric issues observed across the polymeric chains and their fit to the electron density. The red, orange, yellow and green segments of the lower bar indicate the fraction of residues that contain outliers for  $\geq 3$ , 2, 1 and 0 types of geometric quality criteria respectively. A grey segment represents the fraction of residues that are not modelled. The numeric value for each fraction is indicated below the corresponding segment, with a dot representing fractions  $\leq 5\%$ . The upper red bar (where present) indicates the fraction of residues that have poor fit to the electron density. The numeric value is given above the bar.

Mol	Chain	Length	Quality of chain
1	A	273	
1	B	273	
1	C	273	

## 2 Entry composition [i](#)

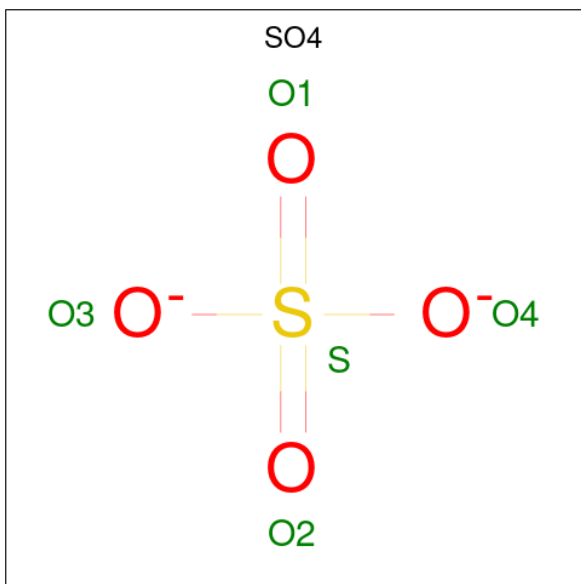
There are 4 unique types of molecules in this entry. The entry contains 6624 atoms, of which 0 are hydrogens and 0 are deuteriums.

In the tables below, the ZeroOcc column contains the number of atoms modelled with zero occupancy, the AltConf column contains the number of residues with at least one atom in alternate conformation and the Trace column contains the number of residues modelled with at most 2 atoms.

- Molecule 1 is a protein called Probable nicotinate-nucleotide pyrophosphorylase.

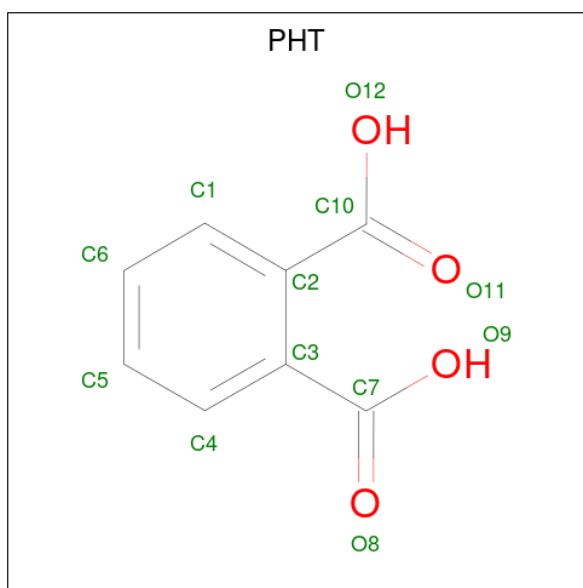
Mol	Chain	Residues	Atoms					ZeroOcc	AltConf	Trace
			Total	C	N	O	S			
1	A	273	2161	1368	377	403	13	0	0	0
1	B	273	2161	1368	377	403	13	0	0	0
1	C	273	2161	1368	377	403	13	0	0	0

- Molecule 2 is SULFATE ION (three-letter code: SO4) (formula: O<sub>4</sub>S).



Mol	Chain	Residues	Atoms			ZeroOcc	AltConf
			Total	O	S		
2	A	1	5	4	1	0	0
2	B	1	5	4	1	0	0
2	C	1	5	4	1	0	0

- Molecule 3 is PHTHALIC ACID (three-letter code: PHT) (formula:  $C_8H_6O_4$ ).



Mol	Chain	Residues	Atoms	ZeroOcc	AltConf
3	A	1	Total C O 12 8 4	0	0
3	B	1	Total C O 12 8 4	0	0
3	C	1	Total C O 12 8 4	0	0

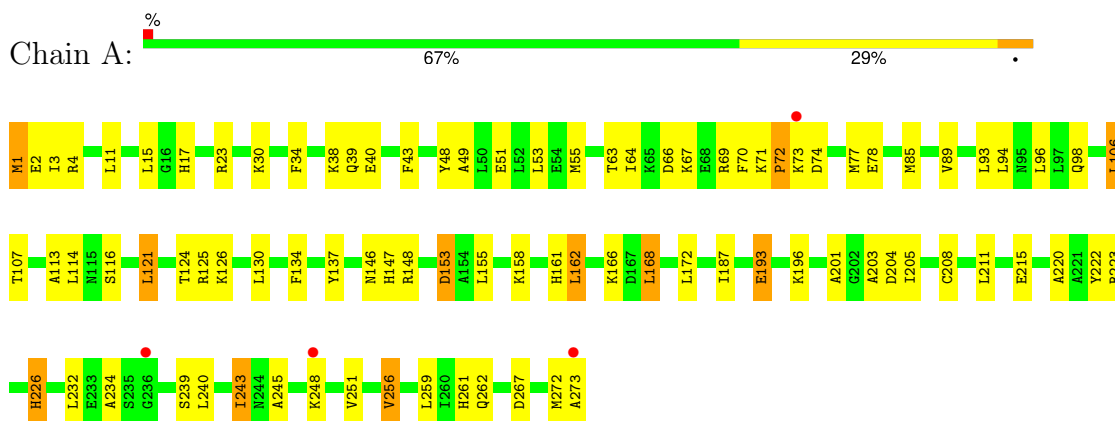
- Molecule 4 is water.

Mol	Chain	Residues	Atoms	ZeroOcc	AltConf
4	A	43	Total O 43 43	0	0
4	B	30	Total O 30 30	0	0
4	C	17	Total O 17 17	0	0

### 3 Residue-property plots [i](#)

These plots are drawn for all protein, RNA, DNA and oligosaccharide chains in the entry. The first graphic for a chain summarises the proportions of the various outlier classes displayed in the second graphic. The second graphic shows the sequence view annotated by issues in geometry and electron density. Residues are color-coded according to the number of geometric quality criteria for which they contain at least one outlier: green = 0, yellow = 1, orange = 2 and red = 3 or more. A red dot above a residue indicates a poor fit to the electron density ( $RSRZ > 2$ ). Stretches of 2 or more consecutive residues without any outlier are shown as a green connector. Residues present in the sample, but not in the model, are shown in grey.

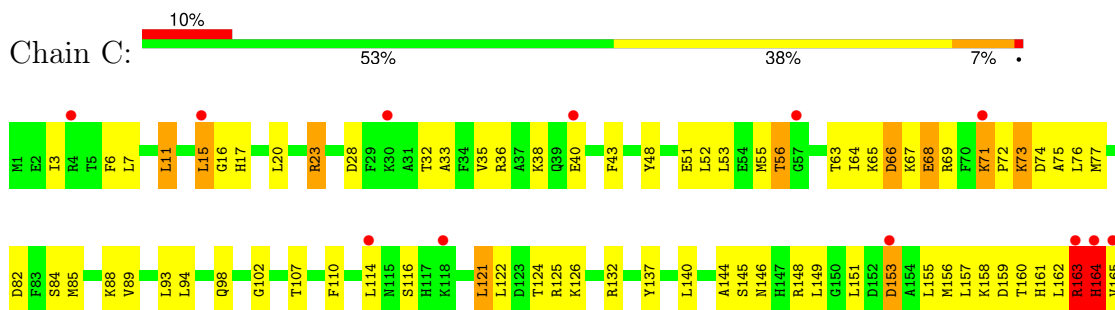
- Molecule 1: Probable nicotinate-nucleotide pyrophosphorylase

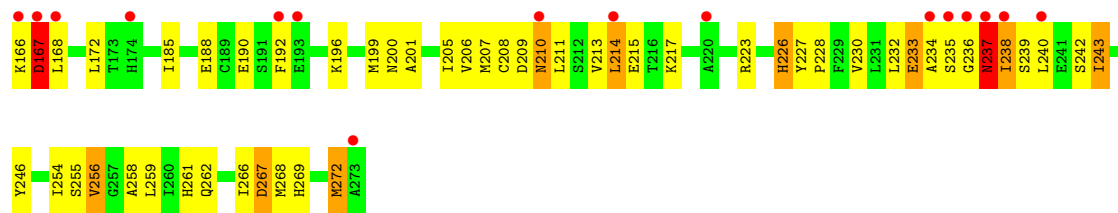


- Molecule 1: Probable nicotinate-nucleotide pyrophosphorylase



- Molecule 1: Probable nicotinate-nucleotide pyrophosphorylase





## 4 Data and refinement statistics i

Property	Value	Source
Space group	P 41 21 2	Depositor
Cell constants a, b, c, $\alpha$ , $\beta$ , $\gamma$	149.59Å 149.59Å 146.25Å 90.00° 90.00° 90.00°	Depositor
Resolution (Å)	20.00 – 2.51 20.00 – 2.51	Depositor EDS
% Data completeness (in resolution range)	88.4 (20.00-2.51) 93.2 (20.00-2.51)	Depositor EDS
$R_{merge}$	(Not available)	Depositor
$R_{sym}$	(Not available)	Depositor
$\langle I/\sigma(I) \rangle$ <sup>1</sup>	5.09 (at 2.51Å)	Xtriage
Refinement program	CNS 1.1	Depositor
R, $R_{free}$	0.228 , 0.260 0.223 , 0.253	Depositor DCC
$R_{free}$ test set	4938 reflections (9.28%)	wwPDB-VP
Wilson B-factor (Å <sup>2</sup> )	36.8	Xtriage
Anisotropy	0.353	Xtriage
Bulk solvent $k_{sol}$ (e/Å <sup>3</sup> ), $B_{sol}$ (Å <sup>2</sup> )	0.35 , 41.5	EDS
L-test for twinning <sup>2</sup>	$\langle  L  \rangle = 0.48$ , $\langle L^2 \rangle = 0.31$	Xtriage
Estimated twinning fraction	0.017 for -h,-l,-k 0.013 for l,-k,h	Xtriage
$F_o, F_c$ correlation	0.92	EDS
Total number of atoms	6624	wwPDB-VP
Average B, all atoms (Å <sup>2</sup> )	43.0	wwPDB-VP

Xtriage's analysis on translational NCS is as follows: *The largest off-origin peak in the Patterson function is 3.11% of the height of the origin peak. No significant pseudotranslation is detected.*

<sup>1</sup>Intensities estimated from amplitudes.

<sup>2</sup>Theoretical values of  $\langle |L| \rangle$ ,  $\langle L^2 \rangle$  for acentric reflections are 0.5, 0.333 respectively for untwinned datasets, and 0.375, 0.2 for perfectly twinned datasets.

## 5 Model quality [i](#)

### 5.1 Standard geometry [i](#)

Bond lengths and bond angles in the following residue types are not validated in this section: PHT, SO4

The Z score for a bond length (or angle) is the number of standard deviations the observed value is removed from the expected value. A bond length (or angle) with  $|Z| > 5$  is considered an outlier worth inspection. RMSZ is the root-mean-square of all Z scores of the bond lengths (or angles).

Mol	Chain	Bond lengths		Bond angles	
		RMSZ	# Z  >5	RMSZ	# Z  >5
1	A	0.45	1/2193 (0.0%)	0.68	1/2942 (0.0%)
1	B	0.40	0/2193	0.68	1/2942 (0.0%)
1	C	1.18	12/2193 (0.5%)	1.25	17/2942 (0.6%)
All	All	0.77	13/6579 (0.2%)	0.91	19/8826 (0.2%)

Chiral center outliers are detected by calculating the chiral volume of a chiral center and verifying if the center is modelled as a planar moiety or with the opposite hand. A planarity outlier is detected by checking planarity of atoms in a peptide group, atoms in a mainchain group or atoms of a sidechain that are expected to be planar.

Mol	Chain	#Chirality outliers	#Planarity outliers
1	B	0	1
1	C	2	4
All	All	2	5

All (13) bond length outliers are listed below:

Mol	Chain	Res	Type	Atoms	Z	Observed(Å)	Ideal(Å)
1	C	164	HIS	CB-CG	-31.53	0.93	1.50
1	C	237	ASN	C-N	-21.44	0.84	1.34
1	C	237	ASN	C-O	18.05	1.57	1.23
1	C	237	ASN	CB-CG	-12.08	1.23	1.51
1	C	68	GLU	CB-CG	-11.62	1.30	1.52
1	C	71	LYS	C-N	11.51	1.56	1.34
1	C	66	ASP	CB-CG	10.23	1.73	1.51
1	C	163	ARG	C-N	-7.76	1.16	1.34
1	C	233	GLU	C-N	-7.22	1.17	1.34
1	C	16	GLY	C-N	-6.73	1.18	1.34
1	C	233	GLU	N-CA	6.01	1.58	1.46
1	C	236	GLY	C-N	-5.55	1.21	1.34
1	A	72	PRO	N-CD	5.50	1.55	1.47



All (19) bond angle outliers are listed below:

Mol	Chain	Res	Type	Atoms	Z	Observed(°)	Ideal(°)
1	C	237	ASN	O-C-N	-39.55	59.41	122.70
1	C	237	ASN	CA-C-N	17.44	155.58	117.20
1	C	164	HIS	CB-CA-C	-14.93	80.54	110.40
1	C	164	HIS	CA-CB-CG	13.23	136.09	113.60
1	C	238	ILE	CA-CB-CG1	10.99	131.88	111.00
1	C	237	ASN	CA-C-O	-10.30	98.47	120.10
1	C	236	GLY	C-N-CA	9.91	146.48	121.70
1	B	273	ALA	CA-C-O	9.75	140.57	120.10
1	C	237	ASN	C-N-CA	9.51	145.47	121.70
1	C	163	ARG	O-C-N	-8.52	109.07	122.70
1	C	237	ASN	N-CA-CB	8.10	125.17	110.60
1	C	237	ASN	CB-CA-C	7.70	125.81	110.40
1	C	68	GLU	CA-CB-CG	6.75	128.26	113.40
1	C	233	GLU	CB-CA-C	-6.48	97.43	110.40
1	C	66	ASP	CB-CG-OD1	6.03	123.72	118.30
1	C	163	ARG	CA-C-N	5.61	129.54	117.20
1	C	66	ASP	CB-CG-OD2	-5.43	113.42	118.30
1	C	237	ASN	CB-CG-OD1	-5.19	111.22	121.60
1	A	72	PRO	N-CA-CB	5.08	109.40	103.30

All (2) chirality outliers are listed below:

Mol	Chain	Res	Type	Atom
1	C	237	ASN	CA
1	C	238	ILE	CB

All (5) planarity outliers are listed below:

Mol	Chain	Res	Type	Group
1	B	272	MET	Mainchain
1	C	163	ARG	Peptide
1	C	167	ASP	Mainchain,Peptide
1	C	237	ASN	Mainchain

## 5.2 Too-close contacts

In the following table, the Non-H and H(model) columns list the number of non-hydrogen atoms and hydrogen atoms in the chain respectively. The H(added) column lists the number of hydrogen atoms added and optimized by MolProbity. The Clashes column lists the number of clashes within the asymmetric unit, whereas Symm-Clashes lists symmetry-related clashes.

Mol	Chain	Non-H	H(model)	H(added)	Clashes	Symm-Clashes
1	A	2161	0	2207	77	0
1	B	2161	0	2207	106	0
1	C	2161	0	2202	170	0
2	A	5	0	0	0	0
2	B	5	0	0	0	0
2	C	5	0	0	1	0
3	A	12	0	4	0	0
3	B	12	0	4	0	0
3	C	12	0	4	0	0
4	A	43	0	0	3	0
4	B	30	0	0	2	0
4	C	17	0	0	1	0
All	All	6624	0	6628	340	0

The all-atom clashscore is defined as the number of clashes found per 1000 atoms (including hydrogen atoms). The all-atom clashscore for this structure is 26.

All (340) close contacts within the same asymmetric unit are listed below, sorted by their clash magnitude.

Atom-1	Atom-2	Interatomic distance (Å)	Clash overlap (Å)
1:C:235:SER:CB	1:C:238:ILE:CD1	1.76	1.58
1:C:235:SER:CB	1:C:238:ILE:HD11	1.20	1.55
1:C:235:SER:HB3	1:C:238:ILE:CD1	1.29	1.47
1:C:164:HIS:CB	1:C:164:HIS:CD2	2.02	1.42
1:C:235:SER:OG	1:C:255:SER:O	1.54	1.25
1:C:235:SER:CB	1:C:238:ILE:HD12	1.75	1.15
1:C:164:HIS:CB	1:C:164:HIS:ND1	2.08	1.14
1:C:235:SER:HB2	1:C:238:ILE:CD1	1.59	1.11
1:C:11:LEU:CD2	1:C:15:LEU:HD21	1.84	1.07
1:C:164:HIS:CG	1:C:164:HIS:CA	2.36	1.07
1:C:235:SER:CA	1:C:238:ILE:HD11	1.85	1.06
1:C:11:LEU:HD22	1:C:15:LEU:HD21	1.06	1.04
1:C:237:ASN:OD1	2:C:2003:SO4:O2	1.77	1.01
1:C:164:HIS:CB	1:C:164:HIS:CG	0.93	0.97
1:A:261:HIS:HD2	1:A:262:GLN:HE21	1.08	0.96
1:C:164:HIS:CG	1:C:164:HIS:HB2	1.48	0.94
1:A:23:ARG:HH21	1:C:140:LEU:HD11	1.32	0.94
1:C:164:HIS:CG	1:C:164:HIS:HB3	1.48	0.93
1:B:113:ALA:HB3	1:B:243:ILE:HD11	1.50	0.93
1:C:238:ILE:HD13	1:C:254:ILE:HG23	1.50	0.91
1:B:158:LYS:H	1:B:161:HIS:HD2	1.13	0.91
1:C:235:SER:HB2	1:C:238:ILE:HD12	1.41	0.91

*Continued on next page...*

*Continued from previous page...*

Atom-1	Atom-2	Interatomic distance (Å)	Clash overlap (Å)
1:C:238:ILE:CD1	1:C:254:ILE:HG23	2.01	0.90
1:C:238:ILE:HD13	1:C:254:ILE:CG2	2.01	0.90
1:A:63:THR:HG23	1:A:77:MET:HG2	1.54	0.90
1:C:208:CYS:HB2	1:C:234:ALA:CB	2.01	0.90
1:C:235:SER:HB2	1:C:238:ILE:CG1	2.01	0.90
1:A:23:ARG:HH22	1:C:146:ASN:HD22	1.19	0.89
1:C:6:PHE:HD2	1:C:7:LEU:HD12	1.36	0.89
1:A:146:ASN:ND2	1:B:23:ARG:HH22	1.71	0.88
1:C:71:LYS:HB3	1:C:72:PRO:HD2	1.54	0.88
1:B:158:LYS:H	1:B:161:HIS:CD2	1.95	0.85
1:A:261:HIS:CD2	1:A:262:GLN:HE21	1.95	0.85
1:C:124:THR:HG22	1:C:126:LYS:H	1.41	0.85
1:C:208:CYS:HB2	1:C:234:ALA:HB1	1.57	0.84
1:C:157:LEU:HB3	1:C:162:LEU:HD21	1.60	0.83
1:C:11:LEU:HD22	1:C:15:LEU:CD2	2.00	0.83
1:B:124:THR:HG22	1:B:125:ARG:N	1.93	0.83
1:B:261:HIS:HD2	1:B:262:GLN:HE21	1.23	0.83
1:B:1:MET:H3	1:B:4:ARG:HD2	1.45	0.81
1:C:63:THR:HG22	1:C:64:ILE:O	1.80	0.81
1:C:124:THR:HG22	1:C:125:ARG:N	1.96	0.81
1:A:187:ILE:HD13	1:A:203:ALA:HB2	1.64	0.80
1:B:1:MET:HB2	1:B:4:ARG:NH1	1.97	0.79
1:C:124:THR:CG2	1:C:125:ARG:H	1.96	0.79
1:A:23:ARG:NH2	1:C:146:ASN:HD22	1.82	0.78
1:C:238:ILE:CD1	1:C:254:ILE:CG2	2.60	0.78
1:A:146:ASN:HD22	1:B:23:ARG:HH22	1.28	0.78
1:B:261:HIS:CD2	1:B:262:GLN:HE21	2.02	0.77
1:B:140:LEU:HG	1:B:146:ASN:HD21	1.47	0.77
1:C:124:THR:CG2	1:C:125:ARG:N	2.48	0.77
1:A:124:THR:HG22	1:A:126:LYS:H	1.50	0.76
1:C:235:SER:CB	1:C:238:ILE:CG1	2.60	0.76
1:C:235:SER:HB2	1:C:238:ILE:HG13	1.67	0.75
1:C:214:LEU:HD12	1:C:214:LEU:H	1.51	0.75
1:C:71:LYS:O	1:C:74:ASP:HB2	1.87	0.74
1:A:23:ARG:NH2	1:C:140:LEU:HD11	2.01	0.74
1:C:124:THR:HG22	1:C:126:LYS:N	2.02	0.74
1:C:164:HIS:CD2	1:C:164:HIS:HB2	1.98	0.74
1:A:208:CYS:HB3	1:A:211:LEU:HD12	1.70	0.73
1:C:71:LYS:HB3	1:C:72:PRO:CD	2.19	0.73
1:B:223:ARG:HH11	1:B:223:ARG:HB3	1.53	0.73
1:B:53:LEU:O	1:B:56:THR:HG22	1.89	0.73

*Continued on next page...*

*Continued from previous page...*

Atom-1	Atom-2	Interatomic distance (Å)	Clash overlap (Å)
1:C:20:LEU:O	1:C:23:ARG:HG3	1.87	0.73
1:B:1:MET:HB2	1:B:4:ARG:HH11	1.54	0.73
1:A:124:THR:HG22	1:A:125:ARG:N	2.02	0.72
1:B:39:GLN:NE2	1:B:267:ASP:H	1.87	0.72
1:B:124:THR:HG22	1:B:125:ARG:H	1.52	0.72
1:B:146:ASN:HD22	1:C:23:ARG:HH22	1.38	0.72
1:A:256:VAL:HG22	1:A:259:LEU:HG	1.70	0.72
1:B:124:THR:CG2	1:B:125:ARG:H	2.03	0.72
1:B:146:ASN:ND2	1:C:23:ARG:HH22	1.88	0.72
1:C:121:LEU:HD22	1:C:259:LEU:HD11	1.72	0.71
1:C:158:LYS:HG2	1:C:161:HIS:CD2	2.24	0.71
1:C:235:SER:HB3	1:C:238:ILE:HD11	0.73	0.71
1:A:1:MET:HB3	1:A:4:ARG:HG3	1.72	0.71
1:A:43:PHE:O	1:A:66:ASP:O	2.08	0.71
1:B:113:ALA:CB	1:B:243:ILE:HD11	2.20	0.71
1:C:52:LEU:O	1:C:56:THR:HB	1.91	0.71
1:C:235:SER:HB3	1:C:238:ILE:HD12	1.45	0.70
1:A:124:THR:CG2	1:A:125:ARG:N	2.56	0.69
1:C:190:GLU:O	1:C:211:LEU:HD21	1.92	0.69
1:C:158:LYS:H	1:C:161:HIS:HD2	1.38	0.69
1:B:124:THR:CG2	1:B:125:ARG:N	2.55	0.68
1:A:72:PRO:O	1:A:73:LYS:HB2	1.92	0.68
1:C:11:LEU:CD2	1:C:15:LEU:CD2	2.68	0.68
1:B:15:LEU:HD22	1:B:15:LEU:H	1.57	0.67
1:C:235:SER:CB	1:C:255:SER:O	2.41	0.67
1:B:39:GLN:HE21	1:B:267:ASP:H	1.40	0.67
1:B:158:LYS:HG2	1:B:161:HIS:CD2	2.29	0.67
1:B:11:LEU:HD22	1:B:15:LEU:HD11	1.76	0.67
1:B:212:SER:OG	1:B:215:GLU:HB2	1.94	0.67
1:A:113:ALA:HB3	1:A:243:ILE:HD12	1.76	0.66
1:C:214:LEU:HD12	1:C:214:LEU:N	2.11	0.66
1:B:149:LEU:HD12	1:C:17:HIS:HB3	1.79	0.65
1:C:208:CYS:O	1:C:234:ALA:O	2.15	0.65
1:C:227:TYR:N	1:C:228:PRO:HD3	2.12	0.65
1:C:94:LEU:HB3	1:C:98:GLN:HE21	1.60	0.64
1:C:6:PHE:CD2	1:C:7:LEU:HD12	2.27	0.64
1:A:124:THR:CG2	1:A:125:ARG:H	2.10	0.64
1:C:192:PHE:CE2	1:C:196:LYS:HD2	2.33	0.64
1:C:53:LEU:HA	1:C:56:THR:HG22	1.80	0.64
1:B:148:ARG:HB2	1:B:153:ASP:HB3	1.80	0.63
1:C:107:THR:HA	1:C:259:LEU:HD22	1.79	0.63

*Continued on next page...*

*Continued from previous page...*

Atom-1	Atom-2	Interatomic distance (Å)	Clash overlap (Å)
1:B:79:ILE:HD11	1:B:270:MET:CE	2.29	0.63
1:C:157:LEU:HB3	1:C:162:LEU:CD2	2.28	0.63
1:A:240:LEU:HD23	1:A:243:ILE:HD11	1.80	0.63
1:B:1:MET:N	1:B:4:ARG:HH11	1.96	0.63
1:C:165:VAL:HG12	1:C:167:ASP:O	1.98	0.62
1:C:121:LEU:CD2	1:C:259:LEU:HD11	2.29	0.62
1:A:4:ARG:HG2	1:A:51:GLU:OE2	1.99	0.62
1:B:124:THR:HG22	1:B:126:LYS:H	1.64	0.62
1:C:140:LEU:HG	1:C:146:ASN:HD21	1.64	0.62
1:A:63:THR:HG22	1:A:64:ILE:O	2.00	0.62
1:C:158:LYS:HG2	1:C:161:HIS:HD2	1.65	0.61
1:B:1:MET:HB3	1:B:4:ARG:HG3	1.81	0.61
1:C:140:LEU:HG	1:C:146:ASN:ND2	2.16	0.61
1:B:140:LEU:HG	1:B:146:ASN:ND2	2.16	0.61
1:B:223:ARG:HB3	1:B:223:ARG:NH1	2.15	0.61
1:A:240:LEU:HA	1:A:243:ILE:HD11	1.83	0.60
1:B:256:VAL:HG22	1:B:259:LEU:HG	1.83	0.60
1:B:8:GLU:O	1:B:12:LYS:HG2	2.01	0.60
1:C:69:ARG:HH11	1:C:69:ARG:HG2	1.67	0.60
1:A:124:THR:HG22	1:A:126:LYS:N	2.17	0.60
1:C:210:ASN:HD22	1:C:210:ASN:C	2.03	0.60
1:C:155:LEU:CD2	1:C:157:LEU:HG	2.31	0.59
1:C:36:ARG:HH12	1:C:75:ALA:HB2	1.67	0.59
1:C:72:PRO:O	1:C:73:LYS:HB2	2.03	0.59
1:C:235:SER:HB3	1:C:254:ILE:HG23	1.85	0.59
1:A:94:LEU:HB3	1:A:98:GLN:HE21	1.67	0.58
1:C:148:ARG:HB2	1:C:153:ASP:HB3	1.85	0.58
1:B:187:ILE:HD12	1:B:203:ALA:HB2	1.85	0.58
1:C:158:LYS:H	1:C:161:HIS:CD2	2.19	0.58
1:C:214:LEU:H	1:C:214:LEU:CD1	2.16	0.58
1:C:66:ASP:O	1:C:67:LYS:HB2	2.03	0.58
1:A:130:LEU:N	1:A:130:LEU:HD12	2.19	0.58
1:B:106:LEU:HD12	1:B:259:LEU:HA	1.86	0.57
1:C:64:ILE:HD13	1:C:76:LEU:HD22	1.85	0.57
1:A:168:LEU:HD22	1:A:172:LEU:HG	1.87	0.57
1:A:1:MET:HG2	1:A:2:GLU:N	2.19	0.57
1:C:28:ASP:OD2	1:C:82:ASP:HB3	2.05	0.57
1:A:72:PRO:O	1:A:73:LYS:CB	2.52	0.56
1:B:210:ASN:O	1:B:211:LEU:HD23	2.05	0.56
1:C:124:THR:HG23	1:C:125:ARG:H	1.70	0.56
1:C:233:GLU:OE1	1:C:255:SER:OG	2.18	0.56

*Continued on next page...*

*Continued from previous page...*

Atom-1	Atom-2	Interatomic distance (Å)	Clash overlap (Å)
1:A:71:LYS:N	1:A:74:ASP:OD2	2.31	0.56
1:B:79:ILE:HD11	1:B:270:MET:HE2	1.88	0.56
1:C:85:MET:HE2	1:C:89:VAL:CG2	2.36	0.56
1:C:188:GLU:HG2	1:C:207:MET:SD	2.46	0.55
1:B:33:ALA:HB2	1:B:272:MET:HE3	1.88	0.55
1:C:36:ARG:NH1	1:C:75:ALA:HB2	2.21	0.55
1:C:155:LEU:HD22	1:C:157:LEU:HG	1.88	0.55
1:C:223:ARG:HD2	1:C:223:ARG:O	2.07	0.55
1:B:33:ALA:HB2	1:B:272:MET:CE	2.35	0.55
1:C:235:SER:HA	1:C:238:ILE:HD11	1.84	0.55
1:C:159:ASP:OD1	1:C:160:THR:N	2.40	0.55
1:C:199:MET:HB3	1:C:227:TYR:CD1	2.41	0.55
1:C:256:VAL:HG22	1:C:256:VAL:O	2.06	0.55
1:B:256:VAL:O	1:B:259:LEU:HG	2.07	0.54
1:B:52:LEU:O	1:B:56:THR:HB	2.08	0.54
1:A:114:LEU:CD1	1:A:116:SER:HB3	2.37	0.54
1:B:105:THR:O	1:B:108:SER:HB3	2.08	0.54
1:B:158:LYS:HG2	1:B:161:HIS:HD2	1.68	0.54
1:A:239:SER:O	1:A:243:ILE:HG12	2.08	0.54
1:B:11:LEU:HD22	1:B:15:LEU:CD1	2.38	0.54
1:C:3:ILE:O	1:C:7:LEU:HD13	2.07	0.54
1:C:33:ALA:HB2	1:C:272:MET:CE	2.38	0.54
1:A:43:PHE:CD2	1:A:64:ILE:HG13	2.44	0.53
1:A:148:ARG:HB2	1:A:153:ASP:HB3	1.90	0.53
1:C:124:THR:HG22	1:C:125:ARG:H	1.64	0.53
1:C:192:PHE:HE2	1:C:196:LYS:HD2	1.73	0.53
1:C:213:VAL:HG12	1:C:217:LYS:HE3	1.90	0.53
1:C:165:VAL:HG12	1:C:166:LYS:N	2.23	0.53
1:A:168:LEU:HD13	1:A:201:ALA:CB	2.38	0.53
1:B:56:THR:HG23	1:B:58:ILE:HG13	1.91	0.53
1:C:51:GLU:O	1:C:55:MET:HG2	2.09	0.53
1:B:121:LEU:HD11	1:B:256:VAL:HG13	1.91	0.53
1:B:235:SER:HB3	1:B:255:SER:OG	2.08	0.52
1:C:125:ARG:NH1	1:C:151:LEU:HD21	2.24	0.52
1:C:85:MET:HE2	1:C:89:VAL:HG23	1.92	0.52
1:B:243:ILE:HG13	1:B:244:ASN:N	2.25	0.52
1:A:146:ASN:HD22	1:B:23:ARG:NH2	2.03	0.52
1:C:165:VAL:CG1	1:C:167:ASP:O	2.57	0.52
1:C:223:ARG:HB2	1:C:232:LEU:HD11	1.91	0.52
1:A:23:ARG:NH2	1:C:146:ASN:ND2	2.56	0.51
1:B:124:THR:HG22	1:B:126:LYS:N	2.25	0.51

*Continued on next page...*

*Continued from previous page...*

Atom-1	Atom-2	Interatomic distance (Å)	Clash overlap (Å)
1:A:121:LEU:HD21	1:A:256:VAL:HG13	1.92	0.51
1:C:208:CYS:HB2	1:C:234:ALA:HB2	1.91	0.51
1:B:1:MET:CB	1:B:4:ARG:HH11	2.23	0.51
1:B:223:ARG:O	1:B:226:HIS:O	2.28	0.51
1:C:162:LEU:O	1:C:164:HIS:N	2.44	0.51
1:A:158:LYS:O	1:A:162:LEU:HD22	2.11	0.51
1:C:66:ASP:O	1:C:67:LYS:CB	2.58	0.51
1:C:242:SER:O	1:C:246:TYR:HD1	1.93	0.51
1:C:196:LYS:O	1:C:200:ASN:ND2	2.44	0.51
1:B:168:LEU:O	1:B:169:LYS:C	2.49	0.50
1:A:220:ALA:HA	1:A:232:LEU:CD1	2.41	0.50
1:C:69:ARG:HG2	1:C:69:ARG:NH1	2.26	0.50
1:B:261:HIS:HD2	1:B:262:GLN:NE2	2.01	0.50
1:C:207:MET:HE3	1:C:233:GLU:OE2	2.11	0.50
1:A:85:MET:CE	1:A:89:VAL:HG23	2.42	0.50
1:B:172:LEU:HD11	1:B:187:ILE:HD11	1.93	0.50
1:C:272:MET:HE2	1:C:272:MET:HA	1.94	0.50
1:B:127:THR:HG22	1:B:260:ILE:HD13	1.93	0.50
1:A:113:ALA:HB3	1:A:243:ILE:CD1	2.41	0.50
1:C:72:PRO:O	1:C:73:LYS:CB	2.60	0.50
1:C:155:LEU:HD23	1:C:156:MET:N	2.27	0.50
1:A:256:VAL:HG22	1:A:256:VAL:O	2.12	0.49
1:B:1:MET:H1	1:B:4:ARG:HH11	1.60	0.49
1:C:239:SER:O	1:C:243:ILE:HG12	2.12	0.49
1:B:76:LEU:HD12	1:B:268:MET:CE	2.42	0.49
1:C:65:LYS:NZ	1:C:65:LYS:HB3	2.26	0.49
1:A:158:LYS:H	1:A:161:HIS:CD2	2.30	0.49
1:C:107:THR:HG23	1:C:259:LEU:HD13	1.94	0.49
1:C:268:MET:O	1:C:269:HIS:HB3	2.13	0.49
1:B:168:LEU:O	1:B:171:PHE:N	2.46	0.49
1:C:35:VAL:HB	1:C:77:MET:HB2	1.95	0.49
1:C:213:VAL:CG1	1:C:217:LYS:HE3	2.42	0.49
1:C:258:ALA:O	1:C:262:GLN:HB2	2.12	0.49
1:C:38:LYS:HB2	1:C:267:ASP:HB3	1.94	0.48
1:C:261:HIS:CD2	1:C:262:GLN:HG2	2.48	0.48
1:A:85:MET:HE3	1:A:89:VAL:HG23	1.96	0.48
1:C:114:LEU:HD13	1:C:116:SER:HB3	1.96	0.48
1:C:125:ARG:HG2	1:C:132:ARG:NH2	2.28	0.48
1:A:94:LEU:O	1:A:98:GLN:HG3	2.13	0.48
1:C:155:LEU:HD23	1:C:155:LEU:C	2.33	0.48
1:A:51:GLU:O	1:A:55:MET:HB2	2.14	0.48

*Continued on next page...*

*Continued from previous page...*

Atom-1	Atom-2	Interatomic distance (Å)	Clash overlap (Å)
1:A:261:HIS:CD2	1:A:262:GLN:HG2	2.49	0.48
1:A:1:MET:HG2	1:A:2:GLU:H	1.77	0.47
1:B:40:GLU:HG3	4:B:2032:HOH:O	2.14	0.47
1:B:51:GLU:O	1:B:55:MET:HG2	2.13	0.47
1:C:240:LEU:HA	1:C:243:ILE:HD11	1.96	0.47
1:C:235:SER:OG	1:C:255:SER:C	2.45	0.47
1:B:168:LEU:HD11	1:B:187:ILE:HD13	1.97	0.47
1:B:190:GLU:O	1:B:211:LEU:HD21	2.14	0.47
1:A:1:MET:HB3	1:A:4:ARG:CG	2.42	0.47
1:B:93:LEU:O	1:B:96:LEU:HB3	2.15	0.47
1:B:79:ILE:HD11	1:B:270:MET:HE1	1.96	0.47
1:C:158:LYS:N	1:C:161:HIS:HD2	2.10	0.47
1:C:159:ASP:O	1:C:163:ARG:N	2.48	0.47
1:A:196:LYS:HG3	1:A:222:TYR:CE2	2.50	0.46
1:B:1:MET:HG2	1:B:2:GLU:H	1.79	0.46
1:B:38:LYS:HB2	1:B:267:ASP:HB3	1.97	0.46
1:C:63:THR:HG23	1:C:77:MET:HG2	1.98	0.46
1:C:40:GLU:N	1:C:40:GLU:CD	2.69	0.46
1:C:223:ARG:HD2	1:C:223:ARG:C	2.35	0.46
1:C:33:ALA:HB2	1:C:272:MET:HE1	1.97	0.46
1:C:172:LEU:HD22	1:C:185:ILE:HG21	1.97	0.46
1:C:209:ASP:O	1:C:210:ASN:ND2	2.49	0.46
1:A:67:LYS:O	1:A:69:ARG:NH1	2.49	0.46
1:C:94:LEU:O	1:C:98:GLN:HG3	2.16	0.46
1:B:42:VAL:HG22	1:B:69:ARG:HD3	1.98	0.46
1:C:223:ARG:CB	1:C:232:LEU:HD11	2.46	0.46
1:B:256:VAL:HG22	1:B:256:VAL:O	2.15	0.45
1:C:205:ILE:HG22	1:C:206:VAL:N	2.30	0.45
1:C:165:VAL:CG1	1:C:166:LYS:N	2.79	0.45
1:A:106:LEU:HD22	1:A:106:LEU:O	2.17	0.45
1:A:124:THR:HG23	1:A:125:ARG:H	1.81	0.45
1:B:148:ARG:HB2	1:B:153:ASP:CB	2.47	0.45
1:A:147:HIS:HB3	4:A:2003:HOH:O	2.15	0.45
1:B:5:THR:O	1:B:9:ARG:HD3	2.17	0.45
1:B:251:VAL:HG22	1:B:252:ASP:N	2.32	0.45
1:B:15:LEU:HD22	1:B:15:LEU:N	2.29	0.45
1:C:114:LEU:CD1	1:C:116:SER:HB3	2.47	0.45
1:A:2:GLU:OE2	1:B:88:LYS:NZ	2.47	0.45
1:B:2:GLU:HG2	4:C:2009:HOH:O	2.16	0.45
1:C:227:TYR:O	1:C:230:VAL:HG12	2.17	0.45
1:B:103:ILE:CD1	1:B:135:GLU:HG2	2.46	0.44

*Continued on next page...*



*Continued from previous page...*

Atom-1	Atom-2	Interatomic distance (Å)	Clash overlap (Å)
1:A:1:MET:HB3	1:A:4:ARG:CD	2.47	0.44
1:B:125:ARG:HG2	1:B:132:ARG:CZ	2.47	0.44
1:C:43:PHE:CG	1:C:64:ILE:HD11	2.53	0.44
1:A:49:ALA:O	1:A:53:LEU:HG	2.17	0.44
1:A:272:MET:O	1:A:273:ALA:C	2.56	0.44
1:B:86:LEU:HD23	1:B:272:MET:CE	2.47	0.44
1:C:15:LEU:H	1:C:15:LEU:HG	1.58	0.44
1:C:40:GLU:CD	1:C:40:GLU:H	2.21	0.44
1:B:211:LEU:HB3	1:B:215:GLU:HB3	2.00	0.43
1:C:122:LEU:HA	1:C:145:SER:O	2.18	0.43
1:B:172:LEU:HD22	1:B:185:ILE:HD13	2.00	0.43
1:B:223:ARG:HD3	1:B:227:TYR:O	2.18	0.43
1:A:193:GLU:HA	1:A:193:GLU:OE1	2.17	0.43
1:B:243:ILE:HG13	1:B:244:ASN:H	1.82	0.43
1:C:53:LEU:O	1:C:56:THR:HG22	2.19	0.43
1:A:40:GLU:HA	1:A:70:PHE:O	2.18	0.43
1:A:204:ASP:C	1:A:205:ILE:HG13	2.38	0.43
1:C:11:LEU:O	1:C:15:LEU:HG	2.18	0.43
1:A:34:PHE:CE2	1:A:78:GLU:HG3	2.54	0.43
1:C:64:ILE:CD1	1:C:76:LEU:HD22	2.49	0.43
1:B:86:LEU:HD23	1:B:272:MET:HE1	2.01	0.43
1:B:114:LEU:HD12	1:B:247:ALA:HB2	2.00	0.43
1:A:245:ALA:HA	1:A:248:LYS:HE2	2.00	0.43
1:C:7:LEU:HD11	1:C:48:TYR:HD2	1.84	0.43
1:C:226:HIS:O	1:C:227:TYR:HB2	2.18	0.43
1:C:168:LEU:HB3	1:C:201:ALA:CB	2.49	0.43
1:C:155:LEU:CD2	1:C:155:LEU:C	2.86	0.43
1:B:96:LEU:HD12	1:B:134:PHE:CE1	2.54	0.42
1:C:121:LEU:HB3	1:C:144:ALA:HB1	2.00	0.42
1:A:3:ILE:HA	4:A:2025:HOH:O	2.19	0.42
1:C:84:SER:O	1:C:88:LYS:HG3	2.18	0.42
1:A:63:THR:HG22	1:A:64:ILE:N	2.34	0.42
1:C:256:VAL:HG22	1:C:259:LEU:HG	2.02	0.42
1:A:130:LEU:N	1:A:130:LEU:CD1	2.82	0.42
1:B:72:PRO:O	1:B:73:LYS:HB2	2.19	0.42
1:B:76:LEU:HD12	1:B:268:MET:HE1	2.01	0.42
1:B:91:ARG:HG3	1:B:95:ASN:ND2	2.34	0.42
1:A:39:GLN:NE2	1:A:267:ASP:H	2.18	0.42
1:A:223:ARG:O	1:A:226:HIS:O	2.36	0.42
1:C:121:LEU:HD21	1:C:256:VAL:HG13	2.01	0.42
1:A:38:LYS:HB2	1:A:267:ASP:HB3	2.01	0.42

*Continued on next page...*

Continued from previous page...

Atom-1	Atom-2	Interatomic distance (Å)	Clash overlap (Å)
1:B:5:THR:CG2	1:B:9:ARG:NE	2.83	0.42
1:C:102:GLY:HA2	1:C:266:ILE:HG12	2.02	0.42
1:B:53:LEU:HA	1:B:56:THR:HG22	2.02	0.42
1:A:234:ALA:HB2	1:A:251:VAL:HG11	2.02	0.41
1:B:125:ARG:HG2	1:B:132:ARG:NH2	2.35	0.41
1:C:33:ALA:HB2	1:C:272:MET:HE2	2.01	0.41
1:A:223:ARG:HD2	1:A:223:ARG:C	2.41	0.41
1:C:85:MET:CE	1:C:89:VAL:HG23	2.50	0.41
1:B:1:MET:SD	1:B:3:ILE:HG12	2.61	0.41
1:C:223:ARG:O	1:C:226:HIS:O	2.39	0.41
1:B:21:PHE:CZ	1:B:25:LEU:HD23	2.55	0.41
1:B:147:HIS:HB3	4:B:2010:HOH:O	2.20	0.41
1:B:58:ILE:CD1	1:B:89:VAL:HG11	2.51	0.41
1:B:121:LEU:HD11	1:B:259:LEU:HD11	2.02	0.41
1:A:48:TYR:CZ	1:A:134:PHE:HD1	2.38	0.41
1:B:192:PHE:CD2	1:B:192:PHE:C	2.94	0.41
1:C:32:THR:HG22	1:C:33:ALA:N	2.36	0.41
1:C:210:ASN:ND2	1:C:210:ASN:O	2.51	0.41
1:B:1:MET:H1	1:B:4:ARG:NH1	2.19	0.41
1:B:115:ASN:C	1:B:115:ASN:HD22	2.25	0.41
1:C:227:TYR:N	1:C:228:PRO:CD	2.83	0.41
1:C:155:LEU:HD21	1:C:157:LEU:HG	2.01	0.40
1:C:172:LEU:HD12	1:C:201:ALA:HB1	2.02	0.40
1:A:17:HIS:HB3	1:C:149:LEU:HD12	2.03	0.40
1:B:1:MET:CB	1:B:4:ARG:HG3	2.50	0.40
1:B:261:HIS:CD2	1:B:262:GLN:HG2	2.57	0.40
1:B:76:LEU:HD12	1:B:268:MET:HE3	2.03	0.40
1:A:30:LYS:HD3	4:A:2029:HOH:O	2.20	0.40
1:A:107:THR:HA	1:A:259:LEU:HD22	2.04	0.40
1:B:84:SER:O	1:B:88:LYS:HG3	2.22	0.40
1:C:110:PHE:HB3	1:C:121:LEU:HD11	2.03	0.40

There are no symmetry-related clashes.

## 5.3 Torsion angles

### 5.3.1 Protein backbone

In the following table, the Percentiles column shows the percent Ramachandran outliers of the chain as a percentile score with respect to all X-ray entries followed by that with respect to entries of similar resolution.

The Analysed column shows the number of residues for which the backbone conformation was analysed, and the total number of residues.

Mol	Chain	Analysed	Favoured	Allowed	Outliers	Percentiles	
1	A	271/273 (99%)	256 (94%)	15 (6%)	0	100	100
1	B	271/273 (99%)	249 (92%)	20 (7%)	2 (1%)	19	35
1	C	271/273 (99%)	248 (92%)	19 (7%)	4 (2%)	8	16
All	All	813/819 (99%)	753 (93%)	54 (7%)	6 (1%)	19	35

All (6) Ramachandran outliers are listed below:

Mol	Chain	Res	Type
1	B	66	ASP
1	C	163	ARG
1	C	272	MET
1	C	73	LYS
1	C	237	ASN
1	B	236	GLY

### 5.3.2 Protein sidechains [i](#)

In the following table, the Percentiles column shows the percent sidechain outliers of the chain as a percentile score with respect to all X-ray entries followed by that with respect to entries of similar resolution.

The Analysed column shows the number of residues for which the sidechain conformation was analysed, and the total number of residues.

Mol	Chain	Analysed	Rotameric	Outliers	Percentiles	
1	A	233/233 (100%)	215 (92%)	18 (8%)	10	22
1	B	233/233 (100%)	211 (91%)	22 (9%)	7	15
1	C	233/233 (100%)	214 (92%)	19 (8%)	9	19
All	All	699/699 (100%)	640 (92%)	59 (8%)	9	19

All (59) residues with a non-rotameric sidechain are listed below:

Mol	Chain	Res	Type
1	A	1	MET
1	A	11	LEU
1	A	15	LEU
1	A	93	LEU

*Continued on next page...*

*Continued from previous page...*

<b>Mol</b>	<b>Chain</b>	<b>Res</b>	<b>Type</b>
1	A	96	LEU
1	A	106	LEU
1	A	121	LEU
1	A	137	TYR
1	A	153	ASP
1	A	155	LEU
1	A	162	LEU
1	A	166	LYS
1	A	168	LEU
1	A	193	GLU
1	A	215	GLU
1	A	226	HIS
1	A	243	ILE
1	A	256	VAL
1	B	9	ARG
1	B	11	LEU
1	B	15	LEU
1	B	27	LYS
1	B	56	THR
1	B	71	LYS
1	B	86	LEU
1	B	93	LEU
1	B	115	ASN
1	B	125	ARG
1	B	137	TYR
1	B	151	LEU
1	B	153	ASP
1	B	155	LEU
1	B	162	LEU
1	B	215	GLU
1	B	223	ARG
1	B	226	HIS
1	B	240	LEU
1	B	256	VAL
1	B	269	HIS
1	B	272	MET
1	C	11	LEU
1	C	15	LEU
1	C	23	ARG
1	C	56	THR
1	C	68	GLU
1	C	93	LEU

*Continued on next page...*

*Continued from previous page...*

Mol	Chain	Res	Type
1	C	121	LEU
1	C	137	TYR
1	C	153	ASP
1	C	164	HIS
1	C	167	ASP
1	C	210	ASN
1	C	214	LEU
1	C	215	GLU
1	C	226	HIS
1	C	237	ASN
1	C	243	ILE
1	C	256	VAL
1	C	267	ASP

Sometimes sidechains can be flipped to improve hydrogen bonding and reduce clashes. All (23) such sidechains are listed below:

Mol	Chain	Res	Type
1	A	39	GLN
1	A	98	GLN
1	A	146	ASN
1	A	161	HIS
1	A	261	HIS
1	B	39	GLN
1	B	98	GLN
1	B	99	HIS
1	B	115	ASN
1	B	146	ASN
1	B	161	HIS
1	B	261	HIS
1	C	95	ASN
1	C	98	GLN
1	C	99	HIS
1	C	117	HIS
1	C	146	ASN
1	C	161	HIS
1	C	197	ASN
1	C	210	ASN
1	C	237	ASN
1	C	261	HIS
1	C	262	GLN

### 5.3.3 RNA [i](#)

There are no RNA molecules in this entry.

## 5.4 Non-standard residues in protein, DNA, RNA chains [i](#)

There are no non-standard protein/DNA/RNA residues in this entry.

## 5.5 Carbohydrates [i](#)

There are no oligosaccharides in this entry.

## 5.6 Ligand geometry [i](#)

6 ligands are modelled in this entry.

In the following table, the Counts columns list the number of bonds (or angles) for which Mogul statistics could be retrieved, the number of bonds (or angles) that are observed in the model and the number of bonds (or angles) that are defined in the Chemical Component Dictionary. The Link column lists molecule types, if any, to which the group is linked. The Z score for a bond length (or angle) is the number of standard deviations the observed value is removed from the expected value. A bond length (or angle) with  $|Z| > 2$  is considered an outlier worth inspection. RMSZ is the root-mean-square of all Z scores of the bond lengths (or angles).

Mol	Type	Chain	Res	Link	Bond lengths			Bond angles		
					Counts	RMSZ	# Z  > 2	Counts	RMSZ	# Z  > 2
3	PHT	B	1002	-	12,12,12	1.80	2 (16%)	16,16,16	1.15	0
3	PHT	A	1001	-	12,12,12	1.82	4 (33%)	16,16,16	1.14	1 (6%)
2	SO4	A	2001	-	4,4,4	0.52	0	6,6,6	1.14	0
3	PHT	C	1003	-	12,12,12	1.78	3 (25%)	16,16,16	1.09	0
2	SO4	B	2002	-	4,4,4	0.43	0	6,6,6	1.13	0
2	SO4	C	2003	-	4,4,4	0.49	0	6,6,6	1.07	0

In the following table, the Chirals column lists the number of chiral outliers, the number of chiral centers analysed, the number of these observed in the model and the number defined in the Chemical Component Dictionary. Similar counts are reported in the Torsion and Rings columns. '-' means no outliers of that kind were identified.

Mol	Type	Chain	Res	Link	Chirals	Torsions	Rings
3	PHT	B	1002	-	-	4/8/8/8	0/1/1/1
3	PHT	A	1001	-	-	4/8/8/8	0/1/1/1
3	PHT	C	1003	-	-	4/8/8/8	0/1/1/1

All (9) bond length outliers are listed below:

Mol	Chain	Res	Type	Atoms	Z	Observed(Å)	Ideal(Å)
3	A	1001	PHT	C4-C3	3.65	1.45	1.39
3	C	1003	PHT	C4-C3	3.52	1.45	1.39
3	B	1002	PHT	C4-C3	3.28	1.44	1.39
3	B	1002	PHT	O8-C7	2.93	1.31	1.22
3	C	1003	PHT	O8-C7	2.84	1.31	1.22
3	A	1001	PHT	O8-C7	2.36	1.29	1.22
3	A	1001	PHT	C3-C7	2.23	1.54	1.49
3	A	1001	PHT	O9-C7	-2.08	1.24	1.30
3	C	1003	PHT	C1-C2	2.06	1.43	1.39

All (1) bond angle outliers are listed below:

Mol	Chain	Res	Type	Atoms	Z	Observed(°)	Ideal(°)
3	A	1001	PHT	C4-C3-C2	-2.00	117.01	119.26

There are no chirality outliers.

All (12) torsion outliers are listed below:

Mol	Chain	Res	Type	Atoms
3	C	1003	PHT	O12-C10-C2-C1
3	C	1003	PHT	O11-C10-C2-C1
3	B	1002	PHT	O11-C10-C2-C1
3	B	1002	PHT	O12-C10-C2-C1
3	C	1003	PHT	O11-C10-C2-C3
3	C	1003	PHT	O12-C10-C2-C3
3	A	1001	PHT	O11-C10-C2-C1
3	B	1002	PHT	O11-C10-C2-C3
3	A	1001	PHT	O12-C10-C2-C1
3	B	1002	PHT	O12-C10-C2-C3
3	A	1001	PHT	O11-C10-C2-C3
3	A	1001	PHT	O12-C10-C2-C3

There are no ring outliers.

1 monomer is involved in 1 short contact:

Mol	Chain	Res	Type	Clashes	Symm-Clashes
2	C	2003	SO4	1	0

## 5.7 Other polymers [i](#)

There are no such residues in this entry.

## 5.8 Polymer linkage issues [i](#)

The following chains have linkage breaks:

Mol	Chain	Number of breaks
1	C	4

All chain breaks are listed below:

Model	Chain	Residue-1	Atom-1	Residue-2	Atom-2	Distance (Å)
1	C	16:GLY	C	17:HIS	N	1.18
1	C	233:GLU	C	234:ALA	N	1.17
1	C	163:ARG	C	164:HIS	N	1.16
1	C	237:ASN	C	238:ILE	N	0.84



## 6 Fit of model and data

### 6.1 Protein, DNA and RNA chains

In the following table, the column labelled ‘#RSRZ > 2’ contains the number (and percentage) of RSRZ outliers, followed by percent RSRZ outliers for the chain as percentile scores relative to all X-ray entries and entries of similar resolution. The OWAB column contains the minimum, median, 95<sup>th</sup> percentile and maximum values of the occupancy-weighted average B-factor per residue. The column labelled ‘Q < 0.9’ lists the number of (and percentage) of residues with an average occupancy less than 0.9.

Mol	Chain	Analysed	<RSRZ>	#RSRZ>2	OWAB(Å <sup>2</sup> )	Q<0.9
1	A	273/273 (100%)	-0.16	4 (1%) 71 68	23, 35, 51, 62	0
1	B	273/273 (100%)	-0.00	4 (1%) 71 68	23, 39, 55, 66	0
1	C	273/273 (100%)	0.76	28 (10%) 13 12	33, 51, 77, 93	0
All	All	819/819 (100%)	0.20	36 (4%) 39 36	23, 41, 70, 93	0

All (36) RSRZ outliers are listed below:

Mol	Chain	Res	Type	RSRZ
1	C	235	SER	9.2
1	C	236	GLY	7.7
1	C	234	ALA	7.6
1	B	273	ALA	6.6
1	C	237	ASN	5.4
1	C	167	ASP	5.0
1	C	238	ILE	3.8
1	C	15	LEU	3.3
1	C	40	GLU	3.2
1	B	197	ASN	3.1
1	C	220	ALA	3.1
1	C	174	HIS	3.0
1	C	165	VAL	3.0
1	C	214	LEU	2.9
1	A	236	GLY	2.9
1	C	273	ALA	2.8
1	C	240	LEU	2.7
1	A	73	LYS	2.7
1	C	163	ARG	2.7
1	B	4	ARG	2.7
1	C	71	LYS	2.7
1	C	164	HIS	2.6
1	C	168	LEU	2.6

*Continued on next page...*

*Continued from previous page...*

Mol	Chain	Res	Type	RSRZ
1	C	166	LYS	2.6
1	C	210	ASN	2.6
1	A	248	LYS	2.5
1	C	4	ARG	2.4
1	C	114	LEU	2.4
1	A	273	ALA	2.3
1	C	118	LYS	2.3
1	C	193	GLU	2.3
1	C	30	LYS	2.2
1	B	109	ARG	2.2
1	C	192	PHE	2.2
1	C	153	ASP	2.2
1	C	57	GLY	2.0

## 6.2 Non-standard residues in protein, DNA, RNA chains [i](#)

There are no non-standard protein/DNA/RNA residues in this entry.

## 6.3 Carbohydrates [i](#)

There are no monosaccharides in this entry.

## 6.4 Ligands [i](#)

In the following table, the Atoms column lists the number of modelled atoms in the group and the number defined in the chemical component dictionary. The B-factors column lists the minimum, median, 95<sup>th</sup> percentile and maximum values of B factors of atoms in the group. The column labelled 'Q< 0.9' lists the number of atoms with occupancy less than 0.9.

Mol	Type	Chain	Res	Atoms	RSCC	RSR	B-factors(Å <sup>2</sup> )	Q<0.9
2	SO4	C	2003	5/5	0.87	0.14	58,60,61,61	0
3	PHT	C	1003	12/12	0.90	0.13	56,62,63,64	0
3	PHT	A	1001	12/12	0.93	0.09	33,34,41,43	0
3	PHT	B	1002	12/12	0.94	0.10	38,39,44,47	0
2	SO4	A	2001	5/5	0.94	0.10	54,55,57,57	0
2	SO4	B	2002	5/5	0.96	0.07	44,46,46,47	0

## 6.5 Other polymers [i](#)

There are no such residues in this entry.