



Full wwPDB X-ray Structure Validation Report ⓘ

Nov 3, 2024 – 12:57 am GMT

PDB ID : 4B74
Title : Discovery of an allosteric mechanism for the regulation of HCV NS3 protein function
Authors : Saalau-Bethell, S.M.; Woodhead, A.J.; Chessari, G.; Carr, M.G.; Coyle, J.; Graham, B.; Hiscock, S.D.; Murray, C.W.; Pathuri, P.; Rich, S.J.; Richardson, C.J.; Williams, P.A.; Jhoti, H.
Deposited on : 2012-08-16
Resolution : 2.18 Å(reported)

This is a Full wwPDB X-ray Structure Validation Report for a publicly released PDB entry.

We welcome your comments at validation@mail.wwpdb.org

A user guide is available at

<https://www.wwpdb.org/validation/2017/XrayValidationReportHelp>

with specific help available everywhere you see the ⓘ symbol.

The types of validation reports are described at

<http://www.wwpdb.org/validation/2017/FAQs#types>.

The following versions of software and data (see [references](#) ①) were used in the production of this report:

MolProbity : 4.02b-467
Mogul : 1.8.4, CSD as541be (2020)
Xtrriage (Phenix) : 1.13
EDS : 3.0
buster-report : 1.1.7 (2018)
Percentile statistics : 20231227.v01 (using entries in the PDB archive December 27th 2023)
CCP4 : 9.0.003 (Gargrove)
Density-Fitness : 1.0.11
Ideal geometry (proteins) : Engh & Huber (2001)
Ideal geometry (DNA, RNA) : Parkinson et al. (1996)
Validation Pipeline (wwPDB-VP) : 2.39

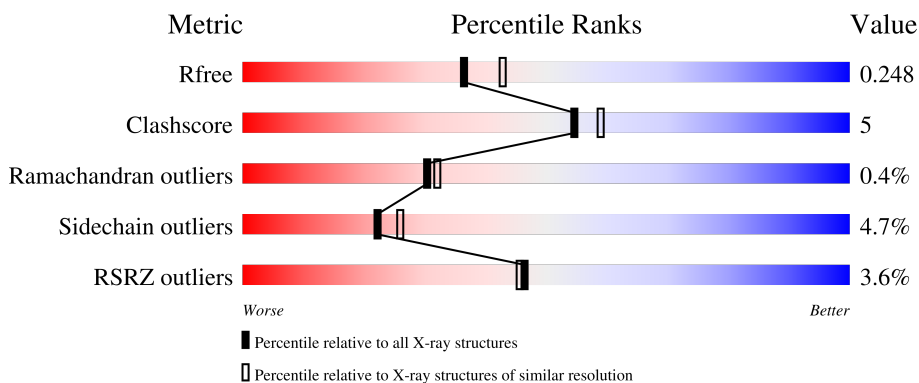
1 Overall quality at a glance

The following experimental techniques were used to determine the structure:

X-RAY DIFFRACTION



The reported resolution of this entry is 2.18 Å.

Percentile scores (ranging between 0-100) for global validation metrics of the entry are shown in the following graphic. The table shows the number of entries on which the scores are based.



Metric	Whole archive (#Entries)	Similar resolution (#Entries, resolution range(Å))
R_{free}	164625	8336 (2.20-2.16)
Clashscore	180529	9404 (2.20-2.16)
Ramachandran outliers	177936	9297 (2.20-2.16)
Sidechain outliers	177891	9297 (2.20-2.16)
RSRZ outliers	164620	8337 (2.20-2.16)

The table below summarises the geometric issues observed across the polymeric chains and their fit to the electron density. The red, orange, yellow and green segments of the lower bar indicate the fraction of residues that contain outliers for ≥ 3 , 2, 1 and 0 types of geometric quality criteria respectively. A grey segment represents the fraction of residues that are not modelled. The numeric value for each fraction is indicated below the corresponding segment, with a dot representing fractions $\leq 5\%$. The upper red bar (where present) indicates the fraction of residues that have poor fit to the electron density. The numeric value is given above the bar.

Mol	Chain	Length	Quality of chain
1	A	666	
1	B	666	

2 Entry composition

There are 3 unique types of molecules in this entry. The entry contains 10411 atoms, of which 58 are hydrogens and 0 are deuteriums.

In the tables below, the ZeroOcc column contains the number of atoms modelled with zero occupancy, the AltConf column contains the number of residues with at least one atom in alternate conformation and the Trace column contains the number of residues modelled with at most 2 atoms.

- Molecule 1 is a protein called NON-STRUCTURAL PROTEIN 4A, SERINE PROTEASE NS3.

Mol	Chain	Residues	Atoms					ZeroOcc	AltConf	Trace
			Total	C	N	O	S			
1	A	645	4808	3026	834	918	30	0	0	0
1	B	642	4794	3019	831	914	30	0	0	0

There are 56 discrepancies between the modelled and reference sequences:

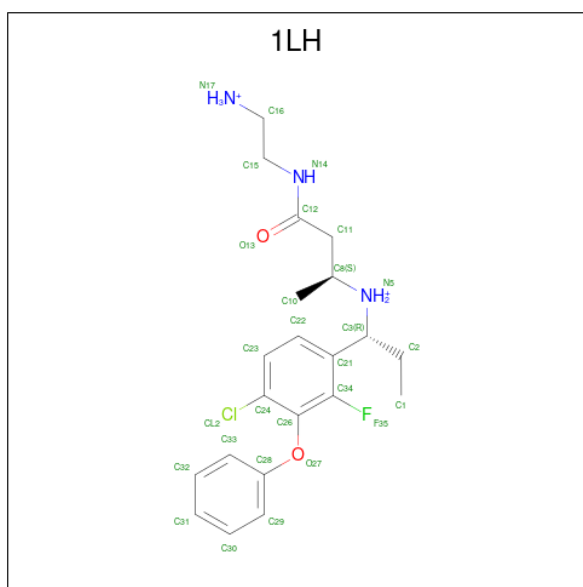
Chain	Residue	Modelled	Actual	Comment	Reference
A	684	MET	-	expression tag	UNP P26663
A	685	GLY	-	expression tag	UNP P26663
A	686	SER	-	expression tag	UNP P26663
A	687	SER	-	expression tag	UNP P26663
A	688	HIS	-	expression tag	UNP P26663
A	689	HIS	-	expression tag	UNP P26663
A	690	HIS	-	expression tag	UNP P26663
A	691	HIS	-	expression tag	UNP P26663
A	692	HIS	-	expression tag	UNP P26663
A	693	HIS	-	expression tag	UNP P26663
A	694	SER	-	expression tag	UNP P26663
A	695	SER	-	expression tag	UNP P26663
A	696	GLY	-	expression tag	UNP P26663
A	697	LEU	-	expression tag	UNP P26663
A	698	VAL	-	expression tag	UNP P26663
A	699	PRO	-	expression tag	UNP P26663
A	700	ARG	-	expression tag	UNP P26663
A	701	GLY	-	expression tag	UNP P26663
A	702	SER	-	expression tag	UNP P26663
A	703	HIS	-	expression tag	UNP P26663
A	704	MET	-	expression tag	UNP P26663
A	718	SER	-	linker	UNP P26663
A	719	GLY	-	linker	UNP P26663
A	720	SER	-	linker	UNP P26663

Continued on next page...

Continued from previous page...

Chain	Residue	Modelled	Actual	Comment	Reference
A	66	GLY	ALA	conflict	UNP P26663
A	86	GLN	PRO	conflict	UNP P26663
A	87	ALA	LYS	conflict	UNP P26663
A	147	SER	PHE	conflict	UNP P26663
B	684	MET	-	expression tag	UNP P26663
B	685	GLY	-	expression tag	UNP P26663
B	686	SER	-	expression tag	UNP P26663
B	687	SER	-	expression tag	UNP P26663
B	688	HIS	-	expression tag	UNP P26663
B	689	HIS	-	expression tag	UNP P26663
B	690	HIS	-	expression tag	UNP P26663
B	691	HIS	-	expression tag	UNP P26663
B	692	HIS	-	expression tag	UNP P26663
B	693	HIS	-	expression tag	UNP P26663
B	694	SER	-	expression tag	UNP P26663
B	695	SER	-	expression tag	UNP P26663
B	696	GLY	-	expression tag	UNP P26663
B	697	LEU	-	expression tag	UNP P26663
B	698	VAL	-	expression tag	UNP P26663
B	699	PRO	-	expression tag	UNP P26663
B	700	ARG	-	expression tag	UNP P26663
B	701	GLY	-	expression tag	UNP P26663
B	702	SER	-	expression tag	UNP P26663
B	703	HIS	-	expression tag	UNP P26663
B	704	MET	-	expression tag	UNP P26663
B	718	SER	-	linker	UNP P26663
B	719	GLY	-	linker	UNP P26663
B	720	SER	-	linker	UNP P26663
B	66	GLY	ALA	conflict	UNP P26663
B	86	GLN	PRO	conflict	UNP P26663
B	87	ALA	LYS	conflict	UNP P26663
B	147	SER	PHE	conflict	UNP P26663

- Molecule 2 is (2S)-4-[(2-ammonioethyl)amino]-N-[(1R)-1-(4-chloro-2-fluoro-3-phenoxyphenyl)propyl]-4-oxobutan-2-aminium (three-letter code: 1LH) (formula: C₂₁H₂₉ClFN₃O₂).



Mol	Chain	Residues	Atoms						ZeroOcc	AltConf	
			Total	C	Cl	F	H	N			O
2	A	1	57	21	1	1	29	3	2	0	0
2	B	1	57	21	1	1	29	3	2	0	0

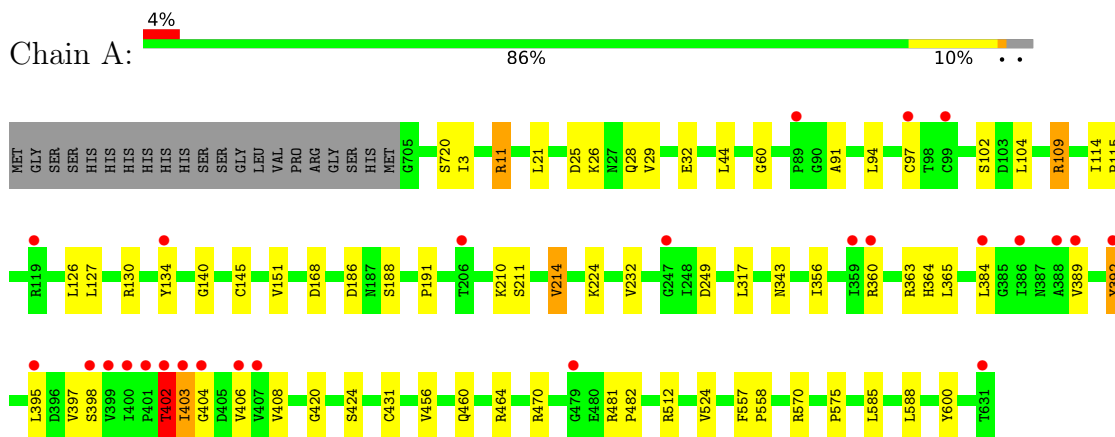
- Molecule 3 is water.

Mol	Chain	Residues	Atoms		ZeroOcc	AltConf
3	A	359	Total	O	0	0
			359	359		
3	B	336	Total	O	0	0
			336	336		

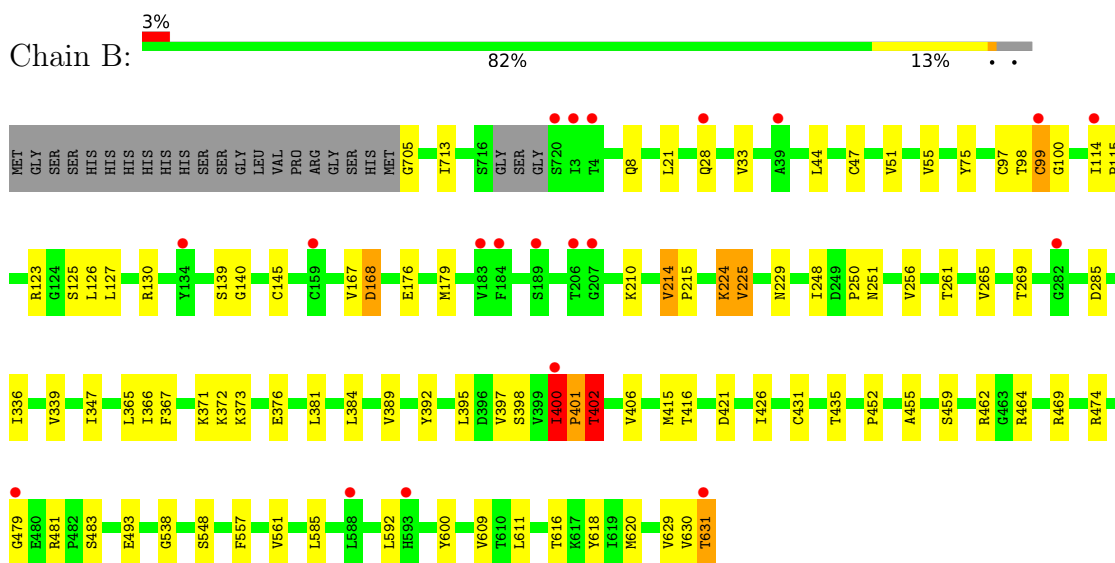
3 Residue-property plots [i](#)

These plots are drawn for all protein, RNA, DNA and oligosaccharide chains in the entry. The first graphic for a chain summarises the proportions of the various outlier classes displayed in the second graphic. The second graphic shows the sequence view annotated by issues in geometry and electron density. Residues are color-coded according to the number of geometric quality criteria for which they contain at least one outlier: green = 0, yellow = 1, orange = 2 and red = 3 or more. A red dot above a residue indicates a poor fit to the electron density ($RSRZ > 2$). Stretches of 2 or more consecutive residues without any outlier are shown as a green connector. Residues present in the sample, but not in the model, are shown in grey.

- Molecule 1: NON-STRUCTURAL PROTEIN 4A, SERINE PROTEASE NS3



- Molecule 1: NON-STRUCTURAL PROTEIN 4A, SERINE PROTEASE NS3



4 Data and refinement statistics

Property	Value	Source
Space group	P 21 21 21	Depositor
Cell constants a, b, c, α , β , γ	91.13Å 108.43Å 139.09Å 90.00° 90.00° 90.00°	Depositor
Resolution (Å)	62.36 – 2.18 62.36 – 2.18	Depositor EDS
% Data completeness (in resolution range)	98.7 (62.36-2.18) 98.8 (62.36-2.18)	Depositor EDS
R_{merge}	0.10	Depositor
R_{sym}	(Not available)	Depositor
$\langle I/\sigma(I) \rangle$ ¹	1.74 (at 2.18Å)	Xtrriage
Refinement program	REFMAC 5.7.0025	Depositor
R, R_{free}	0.174 , 0.243 0.183 , 0.248	Depositor DCC
R_{free} test set	3661 reflections (5.04%)	wwPDB-VP
Wilson B-factor (Å ²)	33.9	Xtrriage
Anisotropy	0.037	Xtrriage
Bulk solvent k_{sol} (e/Å ³), B_{sol} (Å ²)	0.35 , 48.6	EDS
L-test for twinning ²	$\langle L \rangle = 0.48$, $\langle L^2 \rangle = 0.32$	Xtrriage
Estimated twinning fraction	No twinning to report.	Xtrriage
F_o, F_c correlation	0.95	EDS
Total number of atoms	10411	wwPDB-VP
Average B, all atoms (Å ²)	41.0	wwPDB-VP

Xtrriage's analysis on translational NCS is as follows: *The largest off-origin peak in the Patterson function is 3.34% of the height of the origin peak. No significant pseudotranslation is detected.*

¹Intensities estimated from amplitudes.

²Theoretical values of $\langle |L| \rangle$, $\langle L^2 \rangle$ for acentric reflections are 0.5, 0.333 respectively for untwinned datasets, and 0.375, 0.2 for perfectly twinned datasets.

5 Model quality [i](#)

5.1 Standard geometry [i](#)

Bond lengths and bond angles in the following residue types are not validated in this section:
1LH

The Z score for a bond length (or angle) is the number of standard deviations the observed value is removed from the expected value. A bond length (or angle) with $|Z| > 5$ is considered an outlier worth inspection. RMSZ is the root-mean-square of all Z scores of the bond lengths (or angles).

Mol	Chain	Bond lengths		Bond angles	
		RMSZ	# Z >5	RMSZ	# Z >5
1	A	0.64	0/4916	0.74	4/6711 (0.1%)
1	B	0.62	0/4901	0.73	4/6690 (0.1%)
All	All	0.63	0/9817	0.74	8/13401 (0.1%)

There are no bond length outliers.

All (8) bond angle outliers are listed below:

Mol	Chain	Res	Type	Atoms	Z	Observed(°)	Ideal(°)
1	B	400	ILE	C-N-CD	-9.77	99.11	120.60
1	A	109	ARG	NE-CZ-NH2	-8.70	115.95	120.30
1	B	400	ILE	C-N-CA	6.76	150.39	122.00
1	A	109	ARG	NE-CZ-NH1	6.48	123.54	120.30
1	B	402	THR	N-CA-CB	5.82	121.36	110.30
1	B	401	PRO	N-CA-C	5.58	126.62	112.10
1	A	402	THR	C-N-CA	5.19	134.67	121.70
1	A	512	ARG	NE-CZ-NH1	5.01	122.81	120.30

There are no chirality outliers.

There are no planarity outliers.

5.2 Too-close contacts [i](#)

In the following table, the Non-H and H(model) columns list the number of non-hydrogen atoms and hydrogen atoms in the chain respectively. The H(added) column lists the number of hydrogen atoms added and optimized by MolProbity. The Clashes column lists the number of clashes within the asymmetric unit, whereas Symm-Clashes lists symmetry-related clashes.

Mol	Chain	Non-H	H(model)	H(added)	Clashes	Symm-Clashes
1	A	4808	0	4783	38	0

Continued on next page...

Continued from previous page...

Mol	Chain	Non-H	H(model)	H(added)	Clashes	Symm-Clashes
1	B	4794	0	4771	53	0
2	A	28	29	29	1	0
2	B	28	29	29	0	0
3	A	359	0	0	2	0
3	B	336	0	0	1	0
All	All	10353	58	9612	90	0

The all-atom clashscore is defined as the number of clashes found per 1000 atoms (including hydrogen atoms). The all-atom clashscore for this structure is 5.

All (90) close contacts within the same asymmetric unit are listed below, sorted by their clash magnitude.

Atom-1	Atom-2	Interatomic distance (Å)	Clash overlap (Å)
1:A:720:SER:C	1:A:3:ILE:N	2.04	1.09
1:A:720:SER:O	1:A:3:ILE:N	2.02	0.93
1:B:400:ILE:HG21	1:B:402:THR:HG23	1.61	0.80
1:B:400:ILE:HB	1:B:401:PRO:CA	2.13	0.77
1:B:400:ILE:HB	1:B:401:PRO:HA	1.67	0.77
1:B:126:LEU:HD11	1:B:167:VAL:HG13	1.70	0.73
1:B:401:PRO:HD2	1:B:406:VAL:HG21	1.73	0.70
1:B:115:PRO:HB2	1:B:127:LEU:HD22	1.76	0.67
1:B:400:ILE:HG21	1:B:402:THR:CG2	2.27	0.65
1:B:97:CYS:HG	1:B:145:CYS:CB	2.11	0.63
1:B:372:LYS:O	1:B:376:GLU:HG2	2.00	0.62
1:B:139:SER:OG	1:B:631:THR:O	2.18	0.61
1:B:400:ILE:HG22	1:B:402:THR:N	2.15	0.61
1:A:720:SER:CA	1:A:3:ILE:N	2.65	0.59
1:A:232:VAL:HG12	3:A:2158:HOH:O	2.03	0.57
1:B:389:VAL:HG11	1:B:400:ILE:O	2.03	0.57
1:B:400:ILE:CG2	1:B:402:THR:N	2.68	0.57
1:A:356:ILE:HD11	1:A:384:LEU:HD23	1.85	0.57
1:A:402:THR:HG23	1:A:403:ILE:HB	1.88	0.56
1:A:343:ASN:HD22	1:B:8:GLN:NE2	2.04	0.56
1:B:616:THR:O	1:B:620:MET:HG3	2.05	0.56
1:A:97:CYS:HG	1:A:145:CYS:HG	0.57	0.55
1:B:75:TYR:CE1	1:B:179:MET:HA	2.41	0.55
1:B:97:CYS:SG	1:B:145:CYS:SG	3.05	0.55
1:B:397:VAL:O	1:B:400:ILE:HG12	2.07	0.54
1:A:575:PRO:HB3	1:A:585:LEU:HD12	1.88	0.54
1:A:115:PRO:HB2	1:A:127:LEU:HD22	1.88	0.54
1:B:97:CYS:HG	1:B:145:CYS:HG	1.50	0.53

Continued on next page...

Continued from previous page...

Atom-1	Atom-2	Interatomic distance (Å)	Clash overlap (Å)
1:A:11:ARG:NH2	1:A:25:ASP:OD1	2.41	0.52
1:A:392:TYR:CE1	1:A:395:LEU:HD22	2.45	0.52
1:A:570:ARG:NH1	3:A:2313:HOH:O	2.39	0.52
1:A:720:SER:O	1:A:3:ILE:CA	2.58	0.52
1:A:524:VAL:HA	2:A:1721:1LH:H15	1.93	0.51
1:B:97:CYS:SG	1:B:145:CYS:HB3	2.50	0.51
1:B:365:LEU:HD21	1:B:367:PHE:CZ	2.46	0.51
1:B:98:THR:O	1:B:99:CYS:C	2.49	0.51
1:A:363:ARG:HG2	1:A:406:VAL:HG12	1.93	0.50
1:B:55:VAL:HG21	1:B:139:SER:HB3	1.93	0.50
1:B:225:VAL:HG13	1:B:265:VAL:HG22	1.93	0.50
1:B:415:MET:HA	1:B:464:ARG:HH21	1.77	0.50
1:B:123:ARG:NE	1:B:168:ASP:OD1	2.44	0.49
1:B:705:GLY:N	3:B:2331:HOH:O	2.45	0.49
1:B:114:ILE:HD12	1:B:130:ARG:CZ	2.43	0.48
1:A:356:ILE:HG22	1:A:360:ARG:HB3	1.95	0.48
1:A:186:ASP:OD1	1:A:188:SER:OG	2.27	0.48
1:A:397:VAL:O	1:A:398:SER:OG	2.28	0.48
1:A:60:GLY:HA3	1:A:482:PRO:HB3	1.96	0.47
1:A:365:LEU:HD13	1:A:408:VAL:HG13	1.95	0.47
1:A:403:ILE:HG22	1:A:404:GLY:N	2.29	0.47
1:B:493:GLU:HG3	1:B:557:PHE:CZ	2.49	0.47
1:B:214:VAL:HG22	1:B:215:PRO:HD3	1.97	0.47
1:B:400:ILE:CG2	1:B:401:PRO:C	2.83	0.47
1:A:32:GLU:HG3	1:A:94:LEU:HD21	1.96	0.47
1:A:97:CYS:SG	1:A:151:VAL:HG23	2.55	0.47
1:B:251:ASN:HD22	1:B:261:THR:H	1.64	0.46
1:B:371:LYS:HG3	1:B:392:TYR:CZ	2.50	0.46
1:B:713:ILE:HB	1:B:33:VAL:HB	1.97	0.45
1:A:364:HIS:ND1	1:A:424:SER:OG	2.42	0.45
1:B:371:LYS:HG3	1:B:392:TYR:CE1	2.52	0.45
1:A:397:VAL:O	1:A:398:SER:CB	2.65	0.45
1:A:420:GLY:O	1:A:464:ARG:NH1	2.50	0.45
1:A:210:LYS:O	1:A:214:VAL:HG13	2.16	0.45
1:A:191:PRO:HG2	1:A:317:LEU:HD21	1.99	0.44
1:B:401:PRO:O	1:B:402:THR:OG1	2.31	0.44
1:B:47:CYS:HA	1:B:51:VAL:O	2.17	0.44
1:A:210:LYS:HA	1:A:214:VAL:CG1	2.47	0.44
1:B:248:ILE:O	1:B:250:PRO:HD3	2.18	0.44
1:A:481:ARG:HB2	1:A:482:PRO:HD2	2.00	0.44
1:B:44:LEU:O	1:B:140:GLY:HA3	2.17	0.44

Continued on next page...

Continued from previous page...

Atom-1	Atom-2	Interatomic distance (Å)	Clash overlap (Å)
1:B:229:ASN:O	1:B:269:THR:HA	2.18	0.43
1:B:347:ILE:HD13	1:B:381:LEU:HD21	1.99	0.43
1:B:400:ILE:CB	1:B:401:PRO:CA	2.89	0.43
1:A:114:ILE:HD12	1:A:130:ARG:CZ	2.49	0.42
1:A:389:VAL:O	1:A:408:VAL:HA	2.20	0.42
1:A:29:VAL:HG21	1:A:91:ALA:HB2	2.02	0.41
1:B:224:LYS:N	1:B:285:ASP:OD2	2.43	0.41
1:B:538:GLY:HA3	1:B:618:TYR:CE2	2.55	0.41
1:B:98:THR:O	1:B:100:GLY:N	2.53	0.41
1:B:455:ALA:HB3	1:B:483:SER:HB3	2.02	0.41
1:B:251:ASN:ND2	1:B:261:THR:H	2.18	0.41
1:B:398:SER:C	1:B:400:ILE:HG12	2.41	0.41
1:A:456:VAL:O	1:A:460:GLN:HG2	2.20	0.41
1:B:452:PRO:O	1:B:481:ARG:NE	2.52	0.41
1:A:44:LEU:O	1:A:140:GLY:HA3	2.20	0.41
1:A:557:PHE:N	1:A:558:PRO:CD	2.84	0.41
1:B:336:ILE:HD13	1:B:462:ARG:HG2	2.03	0.40
1:B:366:ILE:HG12	1:B:426:ILE:HB	2.04	0.40
1:B:557:PHE:O	1:B:561:VAL:HG23	2.21	0.40
1:A:32:GLU:HG3	1:A:94:LEU:CD2	2.51	0.40
1:B:339:VAL:O	1:B:474:ARG:HA	2.21	0.40

There are no symmetry-related clashes.

5.3 Torsion angles [i](#)

5.3.1 Protein backbone [i](#)

In the following table, the Percentiles column shows the percent Ramachandran outliers of the chain as a percentile score with respect to all X-ray entries followed by that with respect to entries of similar resolution.

The Analysed column shows the number of residues for which the backbone conformation was analysed, and the total number of residues.

Mol	Chain	Analysed	Favoured	Allowed	Outliers	Percentiles
1	A	641/666 (96%)	619 (97%)	21 (3%)	1 (0%)	44 49
1	B	637/666 (96%)	620 (97%)	13 (2%)	4 (1%)	22 21
All	All	1278/1332 (96%)	1239 (97%)	34 (3%)	5 (0%)	30 32

All (5) Ramachandran outliers are listed below:

Mol	Chain	Res	Type
1	A	403	ILE
1	B	400	ILE
1	B	402	THR
1	B	479	GLY
1	B	99	CYS

5.3.2 Protein sidechains [i](#)

In the following table, the Percentiles column shows the percent sidechain outliers of the chain as a percentile score with respect to all X-ray entries followed by that with respect to entries of similar resolution.

The Analysed column shows the number of residues for which the sidechain conformation was analysed, and the total number of residues.

Mol	Chain	Analysed	Rotameric	Outliers	Percentiles	
1	A	526/544 (97%)	506 (96%)	20 (4%)	28	34
1	B	525/544 (96%)	496 (94%)	29 (6%)	18	20
All	All	1051/1088 (97%)	1002 (95%)	49 (5%)	22	26

All (49) residues with a non-rotameric sidechain are listed below:

Mol	Chain	Res	Type
1	A	11	ARG
1	A	21	LEU
1	A	26	LYS
1	A	28	GLN
1	A	102	SER
1	A	104	LEU
1	A	109	ARG
1	A	126	LEU
1	A	134	TYR
1	A	168	ASP
1	A	211	SER
1	A	214	VAL
1	A	224	LYS
1	A	249	ASP
1	A	392	TYR
1	A	402	THR
1	A	431	CYS
1	A	470	ARG

Continued on next page...

Continued from previous page...

Mol	Chain	Res	Type
1	A	588	LEU
1	A	600	TYR
1	B	21	LEU
1	B	28	GLN
1	B	125	SER
1	B	168	ASP
1	B	176	GLU
1	B	210	LYS
1	B	214	VAL
1	B	224	LYS
1	B	225	VAL
1	B	256	VAL
1	B	373	LYS
1	B	384	LEU
1	B	395	LEU
1	B	400	ILE
1	B	416	THR
1	B	421	ASP
1	B	431	CYS
1	B	435	THR
1	B	459	SER
1	B	469	ARG
1	B	548	SER
1	B	585	LEU
1	B	592	LEU
1	B	600	TYR
1	B	609	VAL
1	B	611	LEU
1	B	629	VAL
1	B	630	VAL
1	B	631	THR

Sometimes sidechains can be flipped to improve hydrogen bonding and reduce clashes. All (9) such sidechains are listed below:

Mol	Chain	Res	Type
1	A	251	ASN
1	A	541	HIS
1	A	556	ASN
1	B	8	GLN
1	B	41	GLN
1	B	251	ASN
1	B	293	HIS

Continued on next page...

Continued from previous page...

Mol	Chain	Res	Type
1	B	460	GLN
1	B	549	GLN

5.3.3 RNA [i](#)

There are no RNA molecules in this entry.

5.4 Non-standard residues in protein, DNA, RNA chains [i](#)

There are no non-standard protein/DNA/RNA residues in this entry.

5.5 Carbohydrates [i](#)

There are no oligosaccharides in this entry.

5.6 Ligand geometry [i](#)

2 ligands are modelled in this entry.

In the following table, the Counts columns list the number of bonds (or angles) for which Mogul statistics could be retrieved, the number of bonds (or angles) that are observed in the model and the number of bonds (or angles) that are defined in the Chemical Component Dictionary. The Link column lists molecule types, if any, to which the group is linked. The Z score for a bond length (or angle) is the number of standard deviations the observed value is removed from the expected value. A bond length (or angle) with $|Z| > 2$ is considered an outlier worth inspection. RMSZ is the root-mean-square of all Z scores of the bond lengths (or angles).

Mol	Type	Chain	Res	Link	Bond lengths			Bond angles		
					Counts	RMSZ	# Z > 2	Counts	RMSZ	# Z > 2
2	1LH	B	1721	-	29,29,29	0.83	2 (6%)	33,38,38	0.98	1 (3%)
2	1LH	A	1721	-	29,29,29	0.86	2 (6%)	33,38,38	1.01	2 (6%)

In the following table, the Chirals column lists the number of chiral outliers, the number of chiral centers analysed, the number of these observed in the model and the number defined in the Chemical Component Dictionary. Similar counts are reported in the Torsion and Rings columns. '-' means no outliers of that kind were identified.

Mol	Type	Chain	Res	Link	Chirals	Torsions	Rings
2	1LH	B	1721	-	-	3/22/22/22	0/2/2/2

Continued on next page...

Continued from previous page...

Mol	Type	Chain	Res	Link	Chirals	Torsions	Rings
2	1LH	A	1721	-	-	3/22/22/22	0/2/2/2

All (4) bond length outliers are listed below:

Mol	Chain	Res	Type	Atoms	Z	Observed(Å)	Ideal(Å)
2	A	1721	1LH	C3-N5	3.21	1.51	1.47
2	B	1721	1LH	C21-C34	3.18	1.42	1.38
2	B	1721	1LH	C3-N5	2.67	1.51	1.47
2	A	1721	1LH	C21-C34	2.65	1.41	1.38

All (3) bond angle outliers are listed below:

Mol	Chain	Res	Type	Atoms	Z	Observed(°)	Ideal(°)
2	A	1721	1LH	O27-C26-C24	3.29	124.33	120.51
2	B	1721	1LH	O27-C28-C29	2.16	126.98	119.38
2	A	1721	1LH	O27-C28-C29	2.05	126.58	119.38

There are no chirality outliers.

All (6) torsion outliers are listed below:

Mol	Chain	Res	Type	Atoms
2	B	1721	1LH	C21-C3-N5-C8
2	A	1721	1LH	C21-C3-N5-C8
2	A	1721	1LH	C10-C8-N5-C3
2	A	1721	1LH	C11-C8-N5-C3
2	B	1721	1LH	C10-C8-N5-C3
2	B	1721	1LH	C11-C8-N5-C3

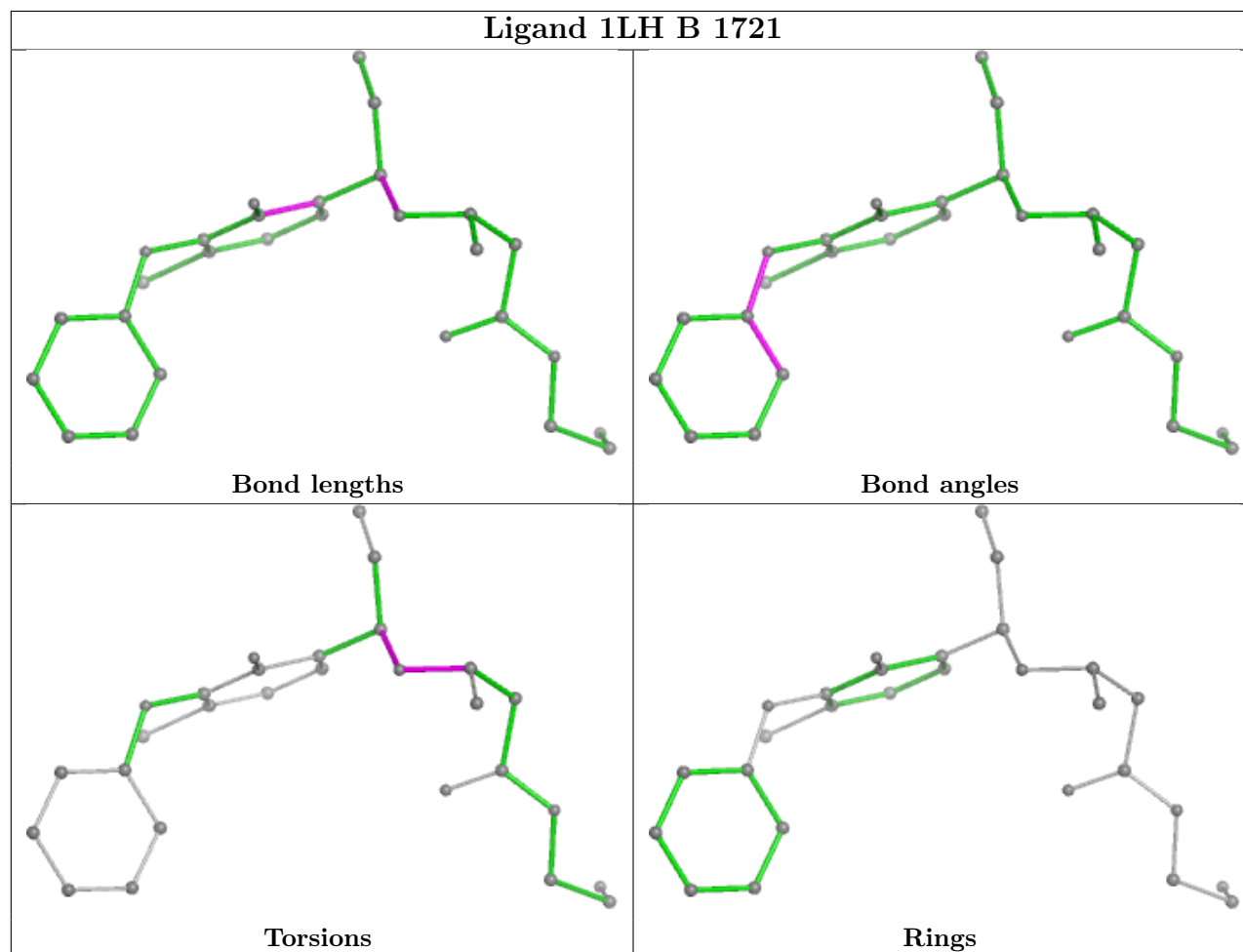
There are no ring outliers.

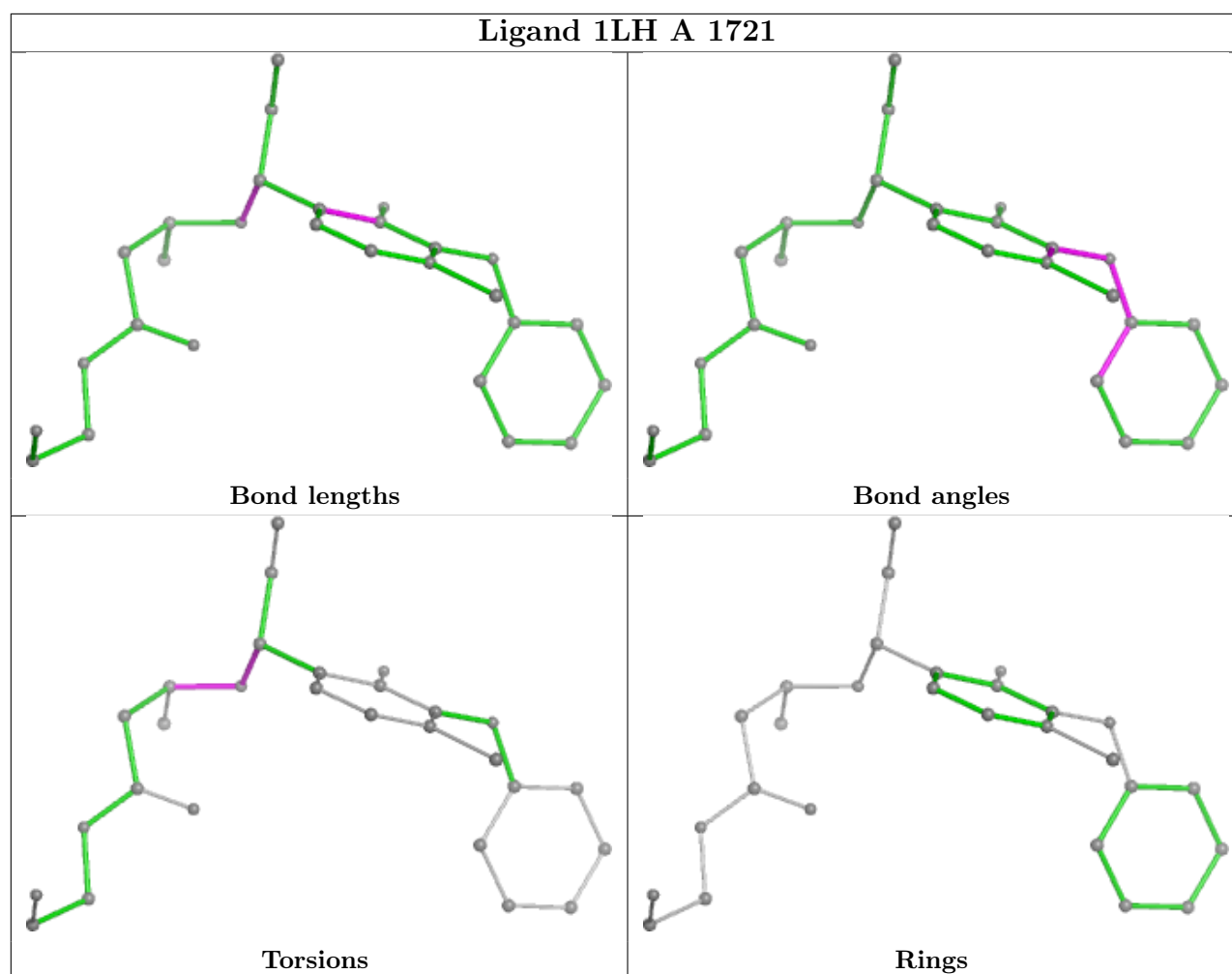
1 monomer is involved in 1 short contact:

Mol	Chain	Res	Type	Clashes	Symm-Clashes
2	A	1721	1LH	1	0

The following is a two-dimensional graphical depiction of Mogul quality analysis of bond lengths, bond angles, torsion angles, and ring geometry for all instances of the Ligand of Interest. In addition, ligands with molecular weight > 250 and outliers as shown on the validation Tables will also be included. For torsion angles, if less than 5% of the Mogul distribution of torsion angles is within 10 degrees of the torsion angle in question, then that torsion angle is considered an outlier. Any bond that is central to one or more torsion angles identified as an outlier by Mogul will be highlighted in the graph. For rings, the root-mean-square deviation (RMSD) between the ring

in question and similar rings identified by Mogul is calculated over all ring torsion angles. If the average RMSD is greater than 60 degrees and the minimal RMSD between the ring in question and any Mogul-identified rings is also greater than 60 degrees, then that ring is considered an outlier. The outliers are highlighted in purple. The color gray indicates Mogul did not find sufficient equivalents in the CSD to analyse the geometry.





5.7 Other polymers [i](#)

There are no such residues in this entry.

5.8 Polymer linkage issues [i](#)

The following chains have linkage breaks:

Mol	Chain	Number of breaks
1	B	1
1	A	1

All chain breaks are listed below:

Model	Chain	Residue-1	Atom-1	Residue-2	Atom-2	Distance (Å)
1	B	720:SER	C	3:ILE	N	3.68
1	A	720:SER	C	3:ILE	N	2.04

6 Fit of model and data

6.1 Protein, DNA and RNA chains

In the following table, the column labelled ‘#RSRZ > 2’ contains the number (and percentage) of RSRZ outliers, followed by percent RSRZ outliers for the chain as percentile scores relative to all X-ray entries and entries of similar resolution. The OWAB column contains the minimum, median, 95th percentile and maximum values of the occupancy-weighted average B-factor per residue. The column labelled ‘Q < 0.9’ lists the number of (and percentage) of residues with an average occupancy less than 0.9.

Mol	Chain	Analysed	<RSRZ>	#RSRZ>2	OWAB(Å ²)	Q<0.9
1	A	645/666 (96%)	0.07	26 (4%) 43 42	19, 36, 79, 95	0
1	B	642/666 (96%)	0.03	20 (3%) 51 51	21, 36, 67, 112	0
All	All	1287/1332 (96%)	0.05	46 (3%) 46 45	19, 36, 75, 112	0

All (46) RSRZ outliers are listed below:

Mol	Chain	Res	Type	RSRZ
1	B	400	ILE	5.0
1	B	134	TYR	4.5
1	B	720	SER	3.8
1	A	89	PRO	3.7
1	A	388	ALA	3.6
1	B	183	VAL	3.5
1	A	134	TYR	3.4
1	B	3	ILE	3.3
1	B	184	PHE	3.2
1	A	403	ILE	3.1
1	A	99	CYS	3.0
1	A	386	ILE	2.7
1	A	392	TYR	2.7
1	B	631	THR	2.7
1	B	593	HIS	2.7
1	A	479	GLY	2.7
1	B	207	GLY	2.6
1	A	384	LEU	2.6
1	A	398	SER	2.6
1	A	97	CYS	2.5
1	A	247	GLY	2.5
1	B	28	GLN	2.5
1	A	407	VAL	2.5
1	A	401	PRO	2.4

Continued on next page...

Continued from previous page...

Mol	Chain	Res	Type	RSRZ
1	B	159	CYS	2.4
1	A	631	THR	2.4
1	A	402	THR	2.3
1	B	588	LEU	2.3
1	B	206	THR	2.3
1	A	206	THR	2.3
1	A	395	LEU	2.2
1	B	189	SER	2.2
1	B	99	CYS	2.2
1	B	114	ILE	2.2
1	B	4	THR	2.2
1	B	282	GLY	2.2
1	A	389	VAL	2.2
1	A	359	ILE	2.1
1	A	399	VAL	2.1
1	A	406	VAL	2.1
1	A	360	ARG	2.1
1	A	404	GLY	2.1
1	B	479	GLY	2.1
1	B	39	ALA	2.1
1	A	119	ARG	2.0
1	A	400	ILE	2.0

6.2 Non-standard residues in protein, DNA, RNA chains [\(i\)](#)

There are no non-standard protein/DNA/RNA residues in this entry.

6.3 Carbohydrates [\(i\)](#)

There are no monosaccharides in this entry.

6.4 Ligands [\(i\)](#)

In the following table, the Atoms column lists the number of modelled atoms in the group and the number defined in the chemical component dictionary. The B-factors column lists the minimum, median, 95th percentile and maximum values of B factors of atoms in the group. The column labelled 'Q< 0.9' lists the number of atoms with occupancy less than 0.9.

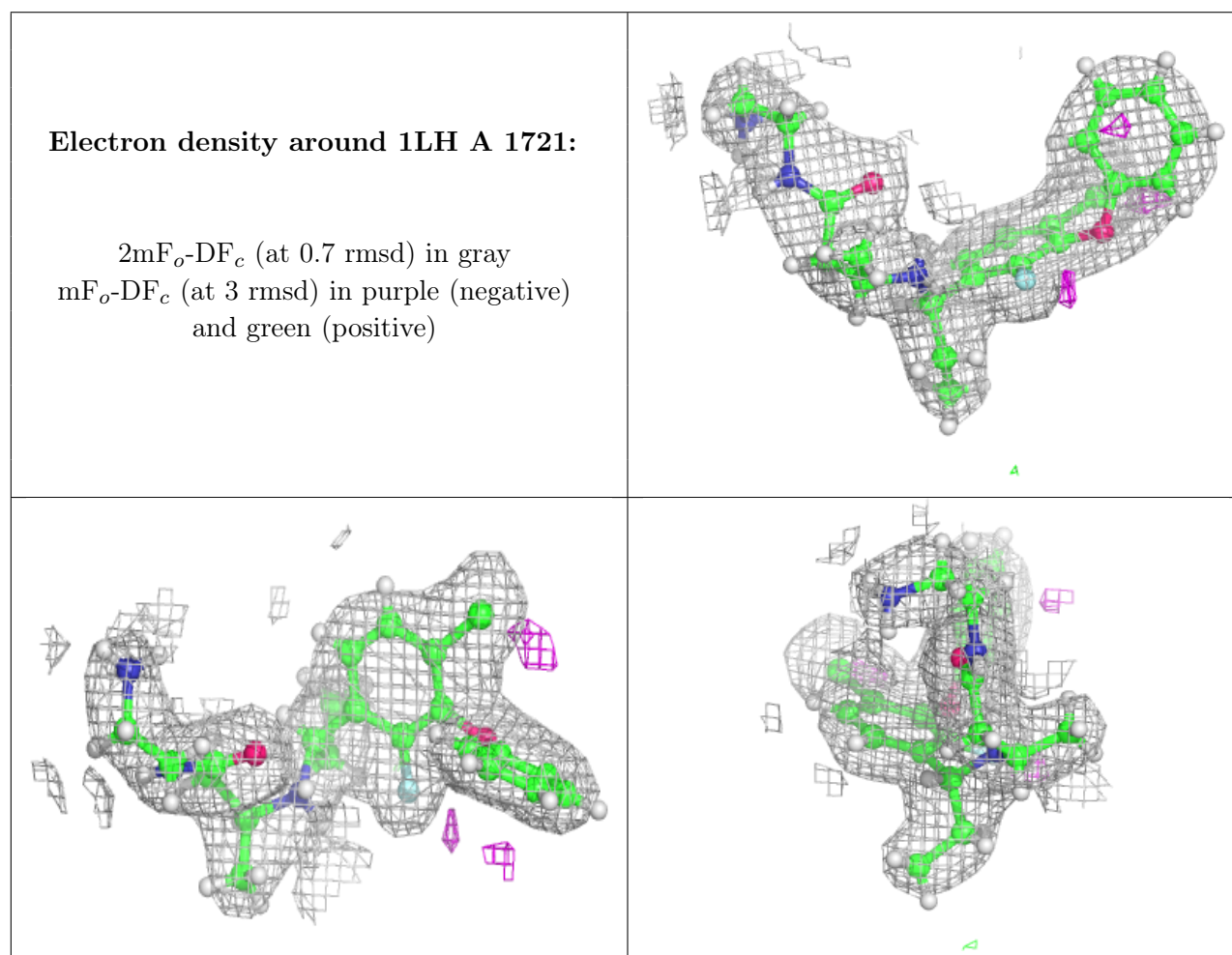
Mol	Type	Chain	Res	Atoms	RSCC	RSR	B-factors(\AA^2)	Q<0.9
2	1LH	A	1721	28/28	0.96	0.06	18,22,28,30	0

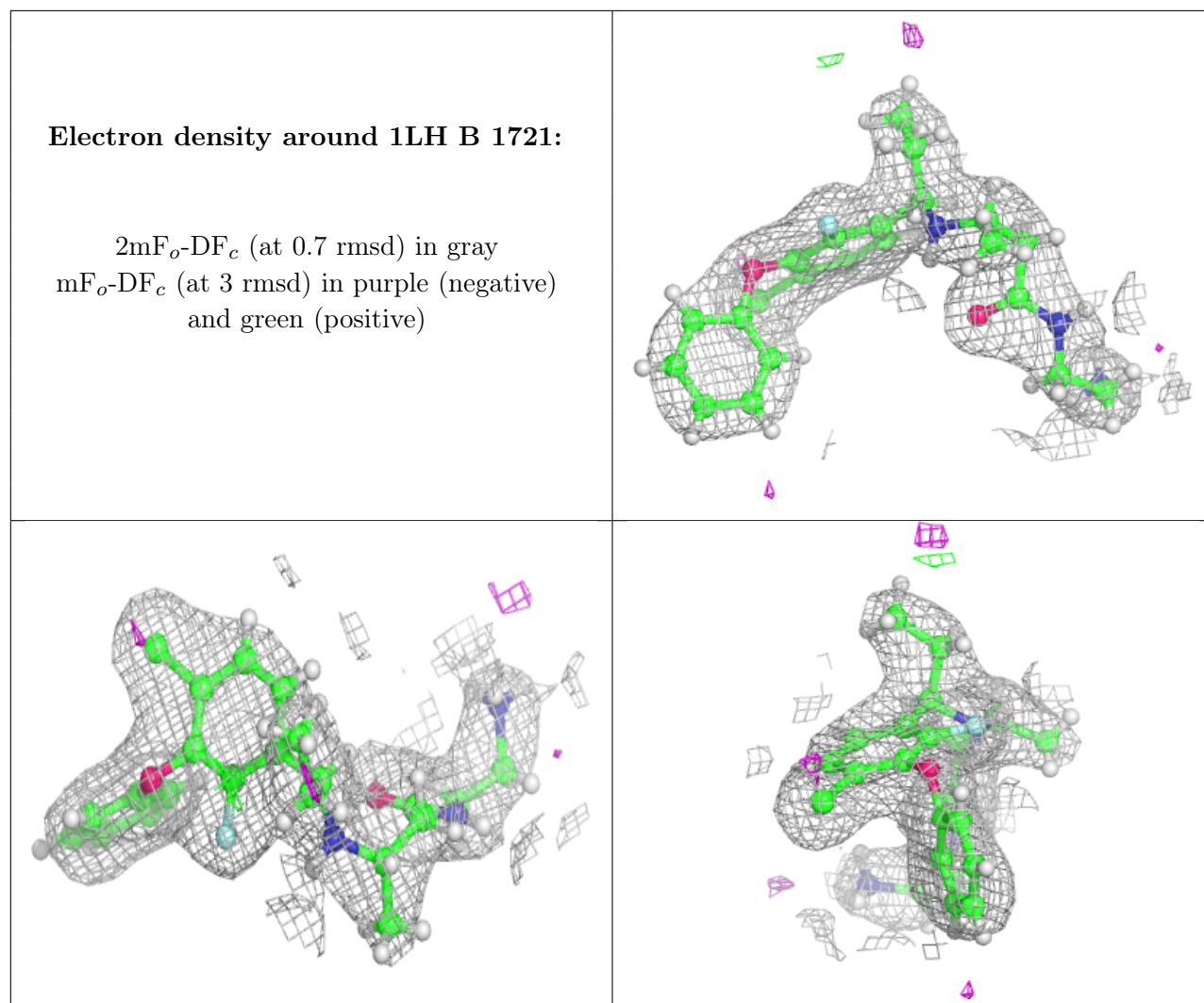
Continued on next page...

Continued from previous page...

Mol	Type	Chain	Res	Atoms	RSCC	RSR	B-factors(\AA^2)	Q<0.9
2	1LH	B	1721	28/28	0.97	0.06	20,27,31,36	0

The following is a graphical depiction of the model fit to experimental electron density of all instances of the Ligand of Interest. In addition, ligands with molecular weight > 250 and outliers as shown on the geometry validation Tables will also be included. Each fit is shown from different orientation to approximate a three-dimensional view.





6.5 Other polymers [i](#)

There are no such residues in this entry.