



Full wwPDB X-ray Structure Validation Report ⓘ

Sep 30, 2024 – 04:06 PM EDT

PDB ID : 9B98
Title : Crystal structure of the human PAD2 protein bound to small molecule
Authors : Byrnes, L.J.; Vajdos, F.
Deposited on : 2024-04-01
Resolution : 2.00 Å(reported)

This is a Full wwPDB X-ray Structure Validation Report for a publicly released PDB entry.

We welcome your comments at validation@mail.wwpdb.org

A user guide is available at

<https://www.wwpdb.org/validation/2017/XrayValidationReportHelp>

with specific help available everywhere you see the ⓘ symbol.

The types of validation reports are described at

<http://www.wwpdb.org/validation/2017/FAQs#types>.

The following versions of software and data (see [references ⓘ](#)) were used in the production of this report:

MolProbity : 4.02b-467
Mogul : 2022.3.0, CSD as543be (2022)
Xtriage (Phenix) : 1.20.1
EDS : 3.0
buster-report : 1.1.7 (2018)
Percentile statistics : 20231227.v01 (using entries in the PDB archive December 27th 2023)
CCP4 : 9.0.003 (Gargrove)
Density-Fitness : 1.0.11
Ideal geometry (proteins) : Engh & Huber (2001)
Ideal geometry (DNA, RNA) : Parkinson et al. (1996)
Validation Pipeline (wwPDB-VP) : 2.39

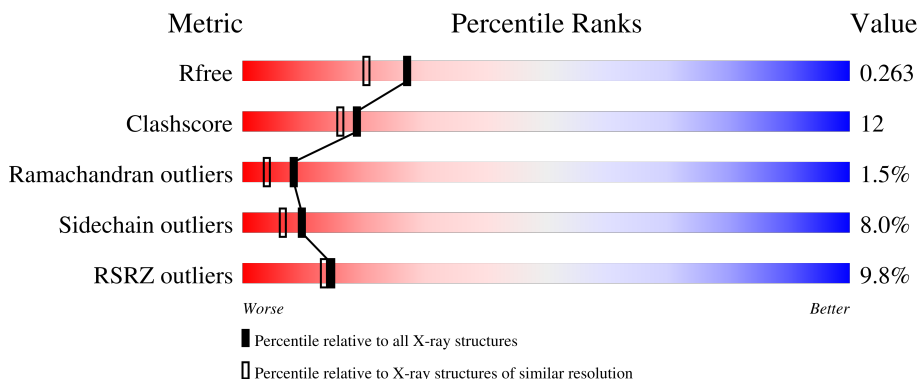
1 Overall quality at a glance

The following experimental techniques were used to determine the structure:

X-RAY DIFFRACTION

The reported resolution of this entry is 2.00 Å.

Percentile scores (ranging between 0-100) for global validation metrics of the entry are shown in the following graphic. The table shows the number of entries on which the scores are based.



Metric	Whole archive (#Entries)	Similar resolution (#Entries, resolution range(Å))
R_{free}	164625	9409 (2.00-2.00)
Clashscore	180529	10737 (2.00-2.00)
Ramachandran outliers	177936	10628 (2.00-2.00)
Sidechain outliers	177891	10627 (2.00-2.00)
RSRZ outliers	164620	9409 (2.00-2.00)

The table below summarises the geometric issues observed across the polymeric chains and their fit to the electron density. The red, orange, yellow and green segments of the lower bar indicate the fraction of residues that contain outliers for ≥ 3 , 2, 1 and 0 types of geometric quality criteria respectively. A grey segment represents the fraction of residues that are not modelled. The numeric value for each fraction is indicated below the corresponding segment, with a dot representing fractions $\leq 5\%$. The upper red bar (where present) indicates the fraction of residues that have poor fit to the electron density. The numeric value is given above the bar.

Mol	Chain	Length	Quality of chain
1	A	690	

The following table lists non-polymeric compounds, carbohydrate monomers and non-standard residues in protein, DNA, RNA chains that are outliers for geometric or electron-density-fit criteria:

Mol	Type	Chain	Res	Chirality	Geometry	Clashes	Electron density
2	ACT	A	701	-	-	X	-

2 Entry composition [i](#)

There are 5 unique types of molecules in this entry. The entry contains 5033 atoms, of which 0 are hydrogens and 0 are deuteriums.

In the tables below, the ZeroOcc column contains the number of atoms modelled with zero occupancy, the AltConf column contains the number of residues with at least one atom in alternate conformation and the Trace column contains the number of residues modelled with at most 2 atoms.

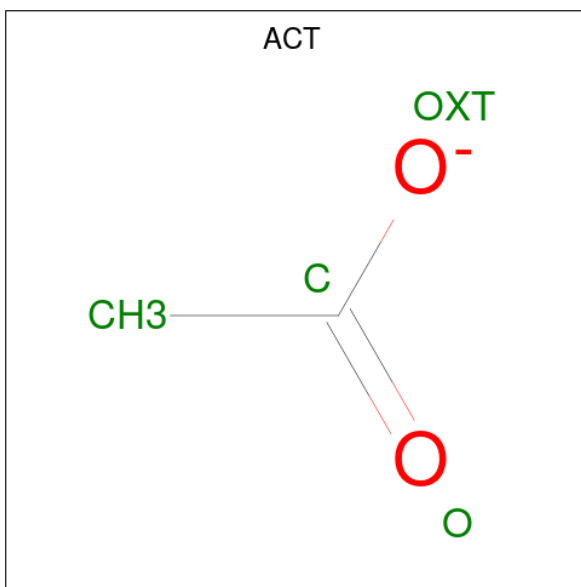
- Molecule 1 is a protein called Protein-arginine deiminase type-2.

Mol	Chain	Residues	Atoms					ZeroOcc	AltConf	Trace
			Total	C	N	O	S			
1	A	602	4815	3097	797	897	24	0	2	0

There are 25 discrepancies between the modelled and reference sequences:

Chain	Residue	Modelled	Actual	Comment	Reference
A	-20	MET	-	initiating methionine	UNP Q9Y2J8
A	-19	GLY	-	expression tag	UNP Q9Y2J8
A	-18	HIS	-	expression tag	UNP Q9Y2J8
A	-17	HIS	-	expression tag	UNP Q9Y2J8
A	-16	HIS	-	expression tag	UNP Q9Y2J8
A	-15	HIS	-	expression tag	UNP Q9Y2J8
A	-14	HIS	-	expression tag	UNP Q9Y2J8
A	-13	HIS	-	expression tag	UNP Q9Y2J8
A	-12	HIS	-	expression tag	UNP Q9Y2J8
A	-11	HIS	-	expression tag	UNP Q9Y2J8
A	-10	HIS	-	expression tag	UNP Q9Y2J8
A	-9	HIS	-	expression tag	UNP Q9Y2J8
A	-8	SER	-	expression tag	UNP Q9Y2J8
A	-7	SER	-	expression tag	UNP Q9Y2J8
A	-6	GLY	-	expression tag	UNP Q9Y2J8
A	-5	HIS	-	expression tag	UNP Q9Y2J8
A	-4	ILE	-	expression tag	UNP Q9Y2J8
A	-3	GLU	-	expression tag	UNP Q9Y2J8
A	-2	GLY	-	expression tag	UNP Q9Y2J8
A	-1	ARG	-	expression tag	UNP Q9Y2J8
A	0	HIS	-	expression tag	UNP Q9Y2J8
A	666	SER	-	expression tag	UNP Q9Y2J8
A	667	ARG	-	expression tag	UNP Q9Y2J8
A	668	ARG	-	expression tag	UNP Q9Y2J8
A	669	SER	-	expression tag	UNP Q9Y2J8

- Molecule 2 is ACETATE ION (three-letter code: ACT) (formula: C₂H₃O₂).

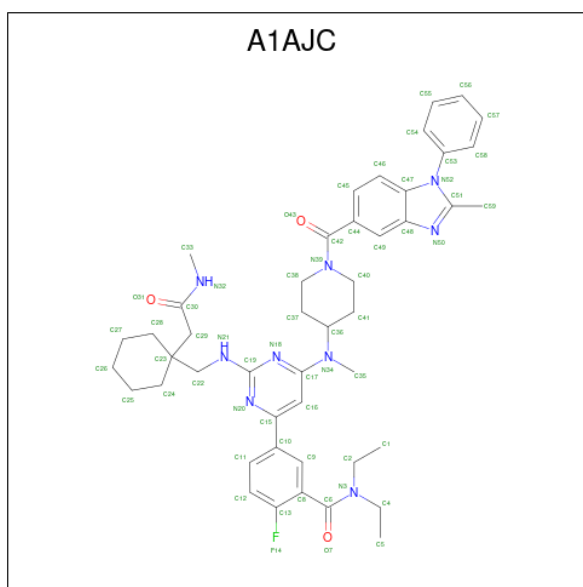


Mol	Chain	Residues	Atoms	ZeroOcc	AltConf
2	A	1	Total C O 4 2 2	0	0
2	A	1	Total C O 4 2 2	0	0

- Molecule 3 is CALCIUM ION (three-letter code: CA) (formula: Ca).

Mol	Chain	Residues	Atoms	ZeroOcc	AltConf
3	A	5	Total Ca 5 5	0	0

- Molecule 4 is (5P)-N,N-diethyl-2-fluoro-5-(2-[(1-[2-(methylamino)-2-oxoethyl]cyclohexyl)methyl]amino]-6-{methyl[1-(2-methyl-1-phenyl-1H-1,3-benzimidazole-5-carbonyl)piperidin-4-yl]amino}pyrimidin-4-yl)benzamide (three-letter code: A1AJC) (formula: C₄₆H₅₆FN₉O₃) (labeled as "Ligand of Interest" by depositor).



Mol	Chain	Residues	Atoms				ZeroOcc	AltConf	
			Total	C	F	N			O
4	A	1	59	46	1	9	3	0	0

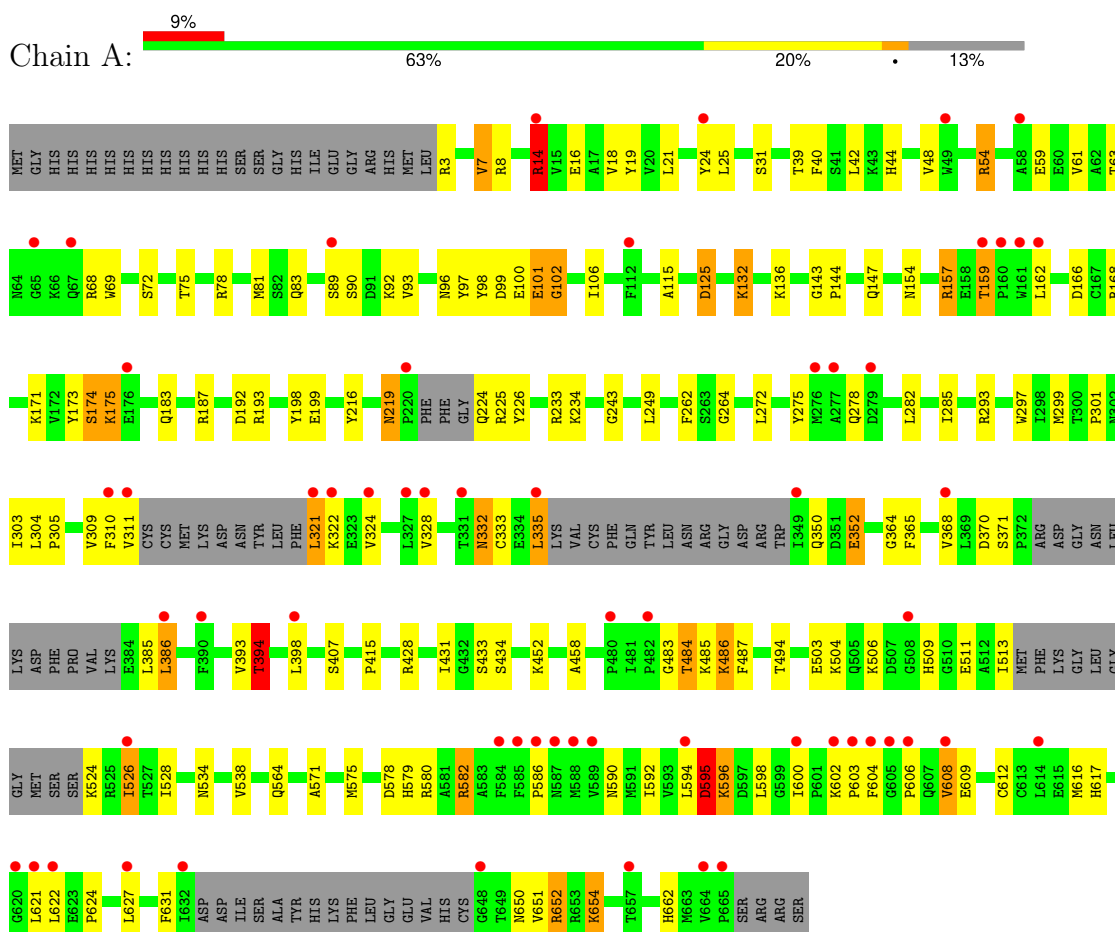
- Molecule 5 is water.

Mol	Chain	Residues	Atoms		ZeroOcc	AltConf
5	A	146	Total	O	0	0
			146	146		

3 Residue-property plots i

These plots are drawn for all protein, RNA, DNA and oligosaccharide chains in the entry. The first graphic for a chain summarises the proportions of the various outlier classes displayed in the second graphic. The second graphic shows the sequence view annotated by issues in geometry and electron density. Residues are color-coded according to the number of geometric quality criteria for which they contain at least one outlier: green = 0, yellow = 1, orange = 2 and red = 3 or more. A red dot above a residue indicates a poor fit to the electron density ($RSRZ > 2$). Stretches of 2 or more consecutive residues without any outlier are shown as a green connector. Residues present in the sample, but not in the model, are shown in grey.

- Molecule 1: Protein-arginine deiminase type-2



4 Data and refinement statistics

Property	Value	Source
Space group	C 1 2 1	Depositor
Cell constants a, b, c, α , β , γ	201.71Å 52.78Å 76.59Å 90.00° 105.71° 90.00°	Depositor
Resolution (Å)	97.09 – 2.00 97.09 – 2.00	Depositor EDS
% Data completeness (in resolution range)	51.2 (97.09-2.00) 51.2 (97.09-2.00)	Depositor EDS
R_{merge}	0.04	Depositor
R_{sym}	(Not available)	Depositor
$\langle I/\sigma(I) \rangle$ ¹	0.76 (at 2.00Å)	Xtrriage
Refinement program	REFMAC 5.8.0349	Depositor
R, R_{free}	0.186 , 0.258 0.195 , 0.263	Depositor DCC
R_{free} test set	2669 reflections (5.04%)	wwPDB-VP
Wilson B-factor (Å ²)	46.9	Xtrriage
Anisotropy	0.146	Xtrriage
Bulk solvent k_{sol} (e/Å ³), B_{sol} (Å ²)	0.36 , 51.2	EDS
L-test for twinning ²	$\langle L \rangle = 0.50$, $\langle L^2 \rangle = 0.34$	Xtrriage
Estimated twinning fraction	No twinning to report.	Xtrriage
F_o, F_c correlation	0.96	EDS
Total number of atoms	5033	wwPDB-VP
Average B, all atoms (Å ²)	62.0	wwPDB-VP

Xtrriage's analysis on translational NCS is as follows: *The largest off-origin peak in the Patterson function is 4.85% of the height of the origin peak. No significant pseudotranslation is detected.*

¹Intensities estimated from amplitudes.

²Theoretical values of $\langle |L| \rangle$, $\langle L^2 \rangle$ for acentric reflections are 0.5, 0.333 respectively for untwinned datasets, and 0.375, 0.2 for perfectly twinned datasets.

5 Model quality

5.1 Standard geometry

Bond lengths and bond angles in the following residue types are not validated in this section: A1AJC, CA, ACT

The Z score for a bond length (or angle) is the number of standard deviations the observed value is removed from the expected value. A bond length (or angle) with $|Z| > 5$ is considered an outlier worth inspection. RMSZ is the root-mean-square of all Z scores of the bond lengths (or angles).

Mol	Chain	Bond lengths		Bond angles	
		RMSZ	# $ Z > 5$	RMSZ	# $ Z > 5$
1	A	0.43	0/4930	0.80	3/6686 (0.0%)

Chiral center outliers are detected by calculating the chiral volume of a chiral center and verifying if the center is modelled as a planar moiety or with the opposite hand. A planarity outlier is detected by checking planarity of atoms in a peptide group, atoms in a mainchain group or atoms of a sidechain that are expected to be planar.

Mol	Chain	#Chirality outliers	#Planarity outliers
1	A	0	10

There are no bond length outliers.

All (3) bond angle outliers are listed below:

Mol	Chain	Res	Type	Atoms	Z	Observed($^{\circ}$)	Ideal($^{\circ}$)
1	A	125	ASP	CB-CG-OD1	-7.47	111.57	118.30
1	A	428	ARG	NE-CZ-NH2	-5.73	117.43	120.30
1	A	394	THR	CB-CA-C	-5.41	97.00	111.60

There are no chirality outliers.

All (10) planarity outliers are listed below:

Mol	Chain	Res	Type	Group
1	A	14	ARG	Sidechain
1	A	157	ARG	Sidechain
1	A	193	ARG	Sidechain
1	A	225	ARG	Sidechain
1	A	233	ARG	Sidechain
1	A	3	ARG	Sidechain
1	A	54	ARG	Sidechain

Continued on next page...

Continued from previous page...

Mol	Chain	Res	Type	Group
1	A	580	ARG	Sidechain
1	A	652	ARG	Sidechain
1	A	8	ARG	Sidechain

5.2 Too-close contacts [i](#)

In the following table, the Non-H and H(model) columns list the number of non-hydrogen atoms and hydrogen atoms in the chain respectively. The H(added) column lists the number of hydrogen atoms added and optimized by MolProbity. The Clashes column lists the number of clashes within the asymmetric unit, whereas Symm-Clashes lists symmetry-related clashes.

Mol	Chain	Non-H	H(model)	H(added)	Clashes	Symm-Clashes
1	A	4815	0	4795	112	0
2	A	8	0	6	3	0
3	A	5	0	0	0	0
4	A	59	0	0	0	0
5	A	146	0	0	20	0
All	All	5033	0	4801	113	0

The all-atom clashscore is defined as the number of clashes found per 1000 atoms (including hydrogen atoms). The all-atom clashscore for this structure is 12.

All (113) close contacts within the same asymmetric unit are listed below, sorted by their clash magnitude.

Atom-1	Atom-2	Interatomic distance (Å)	Clash overlap (Å)
1:A:136:LYS:HB2	5:A:901:HOH:O	1.58	1.04
2:A:701:ACT:H1	5:A:903:HOH:O	1.66	0.93
1:A:592:ILE:HB	5:A:934:HOH:O	1.68	0.92
1:A:147:GLN:HB3	5:A:901:HOH:O	1.78	0.82
1:A:272:LEU:HD23	1:A:285:ILE:HD11	1.65	0.78
1:A:434:SER:OG	5:A:801:HOH:O	2.04	0.76
1:A:168:ARG:HH11	1:A:168:ARG:HG3	1.53	0.73
1:A:162:LEU:HB3	5:A:927:HOH:O	1.89	0.72
1:A:352:GLU:OE2	5:A:802:HOH:O	2.08	0.71
1:A:159:THR:OG1	1:A:162:LEU:HD12	1.92	0.70
1:A:99:ASP:O	5:A:803:HOH:O	2.12	0.67
1:A:7:VAL:HG11	1:A:25:LEU:HD13	1.75	0.67
1:A:68:ARG:HG3	5:A:826:HOH:O	1.96	0.64
1:A:89:SER:O	1:A:90:SER:HB3	1.97	0.63
1:A:612:CYS:O	1:A:616:MET:HG2	1.98	0.63

Continued on next page...

Continued from previous page...

Atom-1	Atom-2	Interatomic distance (Å)	Clash overlap (Å)
1:A:272:LEU:CD2	1:A:285:ILE:HD11	2.28	0.63
1:A:171:LYS:HE2	5:A:847:HOH:O	1.98	0.63
1:A:99:ASP:HB3	1:A:106:ILE:HD13	1.82	0.62
1:A:125:ASP:C	1:A:125:ASP:OD1	2.36	0.62
1:A:234:LYS:HD3	5:A:837:HOH:O	1.99	0.61
1:A:40:PHE:HA	1:A:96:ASN:O	2.01	0.60
1:A:513:ILE:C	1:A:526:ILE:O	2.39	0.60
1:A:582:ARG:HH11	1:A:582:ARG:HG2	1.67	0.60
1:A:42:LEU:HD11	1:A:61:VAL:HG21	1.84	0.60
1:A:272:LEU:HD23	1:A:285:ILE:CD1	2.30	0.59
1:A:484:THR:HA	1:A:485:LYS:HB2	1.84	0.59
1:A:321:LEU:HD12	1:A:322:LYS:HG2	1.85	0.59
1:A:173:TYR:O	1:A:174:SER:CB	2.49	0.58
1:A:528:ILE:HG13	1:A:606:PRO:CB	2.35	0.57
1:A:19:TYR:HE1	1:A:21:LEU:HD23	1.69	0.57
1:A:370:ASP:HB3	1:A:394:THR:HG23	1.86	0.57
1:A:166:ASP:HB3	5:A:805:HOH:O	2.04	0.57
1:A:484:THR:HB	1:A:486:LYS:N	2.20	0.56
1:A:511:GLU:O	1:A:513:ILE:HD13	2.06	0.56
1:A:598:LEU:HD21	1:A:627:LEU:HD22	1.87	0.56
1:A:168:ARG:HG3	1:A:168:ARG:NH1	2.17	0.56
1:A:272:LEU:HD23	1:A:285:ILE:CG1	2.36	0.55
1:A:216:TYR:CD2	2:A:701:ACT:H2	2.42	0.54
1:A:219:ASN:HB2	1:A:224:GLN:HA	1.89	0.54
1:A:504:LYS:HB2	1:A:528:ILE:HD13	1.89	0.54
1:A:586:PRO:HD2	1:A:603:PRO:O	2.06	0.54
1:A:483:GLY:O	1:A:484:THR:HG23	2.08	0.53
1:A:596:LYS:HD3	1:A:596:LYS:H	1.73	0.53
1:A:154:ASN:ND2	5:A:805:HOH:O	2.41	0.52
1:A:528:ILE:HG13	1:A:606:PRO:HB3	1.90	0.52
1:A:494:THR:HA	1:A:571:ALA:O	2.10	0.52
1:A:39:THR:HA	1:A:69:TRP:O	2.09	0.52
1:A:192:ASP:HA	1:A:243:GLY:HA3	1.91	0.52
1:A:183:GLN:HG2	1:A:249:LEU:HD11	1.91	0.52
1:A:219:ASN:HB3	5:A:931:HOH:O	2.10	0.52
1:A:301:PRO:HD2	1:A:304:LEU:HD12	1.92	0.52
1:A:68:ARG:HD3	1:A:98:TYR:CD1	2.46	0.50
1:A:534:ASN:O	1:A:538:VAL:HG23	2.10	0.50
1:A:484:THR:CA	1:A:485:LYS:HB2	2.41	0.50
1:A:328:VAL:HG21	1:A:335:LEU:HD11	1.93	0.50
1:A:503:GLU:HA	1:A:503:GLU:OE1	2.12	0.50

Continued on next page...

Continued from previous page...

Atom-1	Atom-2	Interatomic distance (Å)	Clash overlap (Å)
1:A:311:VAL:HG13	1:A:324:VAL:HG11	1.94	0.50
1:A:575:MET:CG	1:A:579:HIS:HA	2.42	0.49
1:A:7:VAL:CG1	1:A:25:LEU:HB3	2.42	0.49
1:A:582:ARG:HH11	1:A:582:ARG:CG	2.24	0.49
1:A:506:LYS:HG2	5:A:921:HOH:O	2.13	0.49
1:A:483:GLY:O	1:A:484:THR:OG1	2.28	0.49
1:A:144:PRO:HA	1:A:662:HIS:CD2	2.50	0.47
1:A:262:PHE:CZ	1:A:264:GLY:HA2	2.49	0.47
1:A:14:ARG:HH22	1:A:16:GLU:CG	2.27	0.47
1:A:143:GLY:HA2	1:A:662:HIS:O	2.14	0.47
1:A:305:PRO:HD2	1:A:654:LYS:HD2	1.97	0.47
1:A:159:THR:OG1	1:A:162:LEU:CD1	2.62	0.47
1:A:332:ASN:HD22	1:A:332:ASN:H	1.63	0.47
1:A:385:LEU:HD12	1:A:385:LEU:H	1.78	0.47
1:A:484:THR:CB	1:A:485:LYS:HB2	2.45	0.47
1:A:183:GLN:H	2:A:702:ACT:H2	1.81	0.46
1:A:303:ILE:HG12	1:A:415:PRO:HB3	1.97	0.46
1:A:14:ARG:HH12	1:A:16:GLU:HG3	1.80	0.46
1:A:578:ASP:O	1:A:579:HIS:HB2	2.15	0.46
1:A:304:LEU:HD13	1:A:654:LYS:O	2.16	0.46
1:A:509:HIS:CD2	1:A:608:VAL:HG21	2.51	0.46
1:A:157:ARG:NH2	1:A:386:LEU:O	2.48	0.45
1:A:504:LYS:CB	1:A:528:ILE:HD13	2.47	0.45
1:A:81:MET:CE	1:A:115:ALA:HB2	2.47	0.45
1:A:173:TYR:O	1:A:174:SER:HB3	2.17	0.45
1:A:136:LYS:CB	5:A:901:HOH:O	2.38	0.44
1:A:19:TYR:CE1	1:A:81:MET:HB2	2.52	0.44
1:A:68:ARG:CG	5:A:826:HOH:O	2.62	0.44
1:A:297:TRP:CZ3	1:A:299:MET:HG3	2.52	0.44
1:A:328:VAL:HG13	1:A:333:CYS:HB2	1.99	0.43
1:A:592:ILE:HD12	5:A:934:HOH:O	2.18	0.43
1:A:44:HIS:CE1	1:A:63:THR:HG22	2.53	0.43
1:A:101:GLU:O	1:A:102:GLY:C	2.57	0.43
1:A:483:GLY:O	1:A:484:THR:CB	2.66	0.43
1:A:309:VAL:O	1:A:335:LEU:HA	2.19	0.43
1:A:509:HIS:CD2	1:A:608:VAL:HG11	2.53	0.43
1:A:199:GLU:OE2	1:A:275:TYR:OH	2.14	0.42
1:A:509:HIS:CE1	1:A:608:VAL:HG11	2.54	0.42
1:A:18:VAL:HG23	1:A:198:TYR:CE2	2.54	0.42
1:A:132:LYS:HG3	1:A:187:ARG:HH11	1.84	0.42
1:A:415:PRO:HG2	1:A:487:PHE:CG	2.54	0.41

Continued on next page...

Continued from previous page...

Atom-1	Atom-2	Interatomic distance (Å)	Clash overlap (Å)
1:A:385:LEU:HD12	1:A:385:LEU:N	2.35	0.41
1:A:594:LEU:O	1:A:595:ASP:CB	2.68	0.41
1:A:293:ARG:HD3	5:A:864:HOH:O	2.20	0.41
1:A:42:LEU:HD11	1:A:61:VAL:CG2	2.50	0.41
1:A:604:PHE:HB2	5:A:940:HOH:O	2.19	0.41
1:A:582:ARG:CG	1:A:582:ARG:NH1	2.82	0.41
1:A:48:VAL:HG11	1:A:93:VAL:CG2	2.51	0.41
1:A:54:ARG:HG3	1:A:75:THR:OG1	2.21	0.41
1:A:600:ILE:O	1:A:631:PHE:HA	2.21	0.41
1:A:24:TYR:CD2	1:A:78:ARG:HD2	2.56	0.41
1:A:97:TYR:O	1:A:106:ILE:HG12	2.21	0.40
1:A:598:LEU:HD12	1:A:622:LEU:HD13	2.03	0.40
1:A:132:LYS:HE3	1:A:187:ARG:HD3	2.03	0.40
1:A:364:GLY:O	1:A:365:PHE:HB3	2.22	0.40
1:A:175:LYS:HB3	1:A:226:TYR:OH	2.22	0.40
1:A:617:HIS:CE1	1:A:621:LEU:HD11	2.56	0.40

There are no symmetry-related clashes.

5.3 Torsion angles [i](#)

5.3.1 Protein backbone [i](#)

In the following table, the Percentiles column shows the percent Ramachandran outliers of the chain as a percentile score with respect to all X-ray entries followed by that with respect to entries of similar resolution.

The Analysed column shows the number of residues for which the backbone conformation was analysed, and the total number of residues.

Mol	Chain	Analysed	Favoured	Allowed	Outliers	Percentiles
1	A	590/690 (86%)	541 (92%)	40 (7%)	9 (2%)	8 4

All (9) Ramachandran outliers are listed below:

Mol	Chain	Res	Type
1	A	102	GLY
1	A	174	SER
1	A	484	THR
1	A	595	ASP
1	A	624	PRO

Continued on next page...

Continued from previous page...

Mol	Chain	Res	Type
1	A	650	ASN
1	A	458	ALA
1	A	59	GLU
1	A	219	ASN

5.3.2 Protein sidechains [i](#)

In the following table, the Percentiles column shows the percent sidechain outliers of the chain as a percentile score with respect to all X-ray entries followed by that with respect to entries of similar resolution.

The Analysed column shows the number of residues for which the sidechain conformation was analysed, and the total number of residues.

Mol	Chain	Analysed	Rotameric	Outliers	Percentiles
1	A	537/612 (88%)	494 (92%)	43 (8%)	10 6

All (43) residues with a non-rotameric sidechain are listed below:

Mol	Chain	Res	Type
1	A	7	VAL
1	A	14	ARG
1	A	31	SER
1	A	72	SER
1	A	83	GLN
1	A	92	LYS
1	A	100	GLU
1	A	101	GLU
1	A	132	LYS
1	A	159	THR
1	A	175	LYS
1	A	278	GLN
1	A	282	LEU
1	A	310	PHE
1	A	321	LEU
1	A	332	ASN
1	A	335	LEU
1	A	350	GLN
1	A	352	GLU
1	A	368	VAL
1	A	371	SER
1	A	386	LEU

Continued on next page...

Continued from previous page...

Mol	Chain	Res	Type
1	A	393	VAL
1	A	394	THR
1	A	398	LEU
1	A	407	SER
1	A	431	ILE
1	A	433	SER
1	A	452	LYS
1	A	486	LYS
1	A	524	LYS
1	A	526	ILE
1	A	564	GLN
1	A	582	ARG
1	A	590	ASN
1	A	595	ASP
1	A	596	LYS
1	A	602	LYS
1	A	608	VAL
1	A	609	GLU
1	A	651	VAL
1	A	652	ARG
1	A	654	LYS

Sometimes sidechains can be flipped to improve hydrogen bonding and reduce clashes. All (7) such sidechains are listed below:

Mol	Chain	Res	Type
1	A	38	GLN
1	A	224	GLN
1	A	278	GLN
1	A	332	ASN
1	A	590	ASN
1	A	617	HIS
1	A	662	HIS

5.3.3 RNA [i](#)

There are no RNA molecules in this entry.

5.4 Non-standard residues in protein, DNA, RNA chains [i](#)

There are no non-standard protein/DNA/RNA residues in this entry.

5.5 Carbohydrates [i](#)

There are no oligosaccharides in this entry.

5.6 Ligand geometry [i](#)

Of 8 ligands modelled in this entry, 5 are monoatomic - leaving 3 for Mogul analysis.

In the following table, the Counts columns list the number of bonds (or angles) for which Mogul statistics could be retrieved, the number of bonds (or angles) that are observed in the model and the number of bonds (or angles) that are defined in the Chemical Component Dictionary. The Link column lists molecule types, if any, to which the group is linked. The Z score for a bond length (or angle) is the number of standard deviations the observed value is removed from the expected value. A bond length (or angle) with $|Z| > 2$ is considered an outlier worth inspection. RMSZ is the root-mean-square of all Z scores of the bond lengths (or angles).

Mol	Type	Chain	Res	Link	Bond lengths			Bond angles		
					Counts	RMSZ	# Z > 2	Counts	RMSZ	# Z > 2
4	A1AJC	A	708	-	64,65,65	0.57	0	82,93,93	0.64	0
2	ACT	A	701	-	3,3,3	1.03	0	3,3,3	0.78	0
2	ACT	A	702	-	3,3,3	1.02	0	3,3,3	0.70	0

In the following table, the Chirals column lists the number of chiral outliers, the number of chiral centers analysed, the number of these observed in the model and the number defined in the Chemical Component Dictionary. Similar counts are reported in the Torsion and Rings columns. '-' means no outliers of that kind were identified.

Mol	Type	Chain	Res	Link	Chirals	Torsions	Rings
4	A1AJC	A	708	-	-	0/49/69/69	0/7/7/7

There are no bond length outliers.

There are no bond angle outliers.

There are no chirality outliers.

There are no torsion outliers.

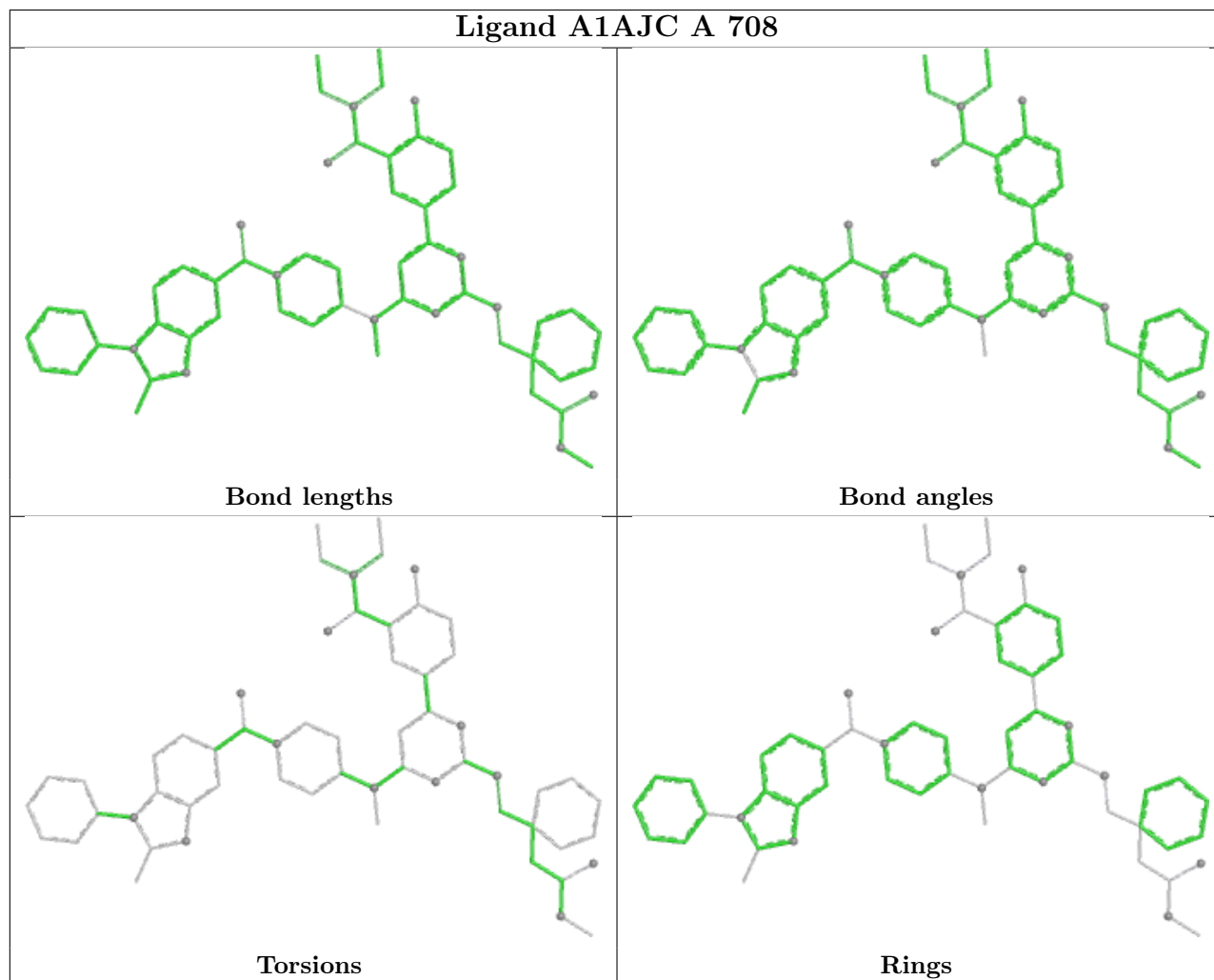
There are no ring outliers.

2 monomers are involved in 3 short contacts:

Mol	Chain	Res	Type	Clashes	Symm-Clashes
2	A	701	ACT	2	0
2	A	702	ACT	1	0

The following is a two-dimensional graphical depiction of Mogul quality analysis of bond lengths,

bond angles, torsion angles, and ring geometry for all instances of the Ligand of Interest. In addition, ligands with molecular weight > 250 and outliers as shown on the validation Tables will also be included. For torsion angles, if less than 5% of the Mogul distribution of torsion angles is within 10 degrees of the torsion angle in question, then that torsion angle is considered an outlier. Any bond that is central to one or more torsion angles identified as an outlier by Mogul will be highlighted in the graph. For rings, the root-mean-square deviation (RMSD) between the ring in question and similar rings identified by Mogul is calculated over all ring torsion angles. If the average RMSD is greater than 60 degrees and the minimal RMSD between the ring in question and any Mogul-identified rings is also greater than 60 degrees, then that ring is considered an outlier. The outliers are highlighted in purple. The color gray indicates Mogul did not find sufficient equivalents in the CSD to analyse the geometry.



5.7 Other polymers [i](#)

There are no such residues in this entry.

5.8 Polymer linkage issues

There are no chain breaks in this entry.

6 Fit of model and data

6.1 Protein, DNA and RNA chains

In the following table, the column labelled ‘#RSRZ> 2’ contains the number (and percentage) of RSRZ outliers, followed by percent RSRZ outliers for the chain as percentile scores relative to all X-ray entries and entries of similar resolution. The OWAB column contains the minimum, median, 95th percentile and maximum values of the occupancy-weighted average B-factor per residue. The column labelled ‘Q< 0.9’ lists the number of (and percentage) of residues with an average occupancy less than 0.9.

Mol	Chain	Analysed	<RSRZ>	#RSRZ>2	OWAB(Å ²)	Q<0.9
1	A	602/690 (87%)	0.51	59 (9%) 14 13	19, 56, 110, 202	2 (0%)

All (59) RSRZ outliers are listed below:

Mol	Chain	Res	Type	RSRZ
1	A	321	LEU	6.8
1	A	324	VAL	6.0
1	A	327	LEU	5.8
1	A	606	PRO	5.0
1	A	585	PHE	4.7
1	A	605	GLY	4.2
1	A	349	ILE	4.1
1	A	608	VAL	4.0
1	A	584	PHE	3.8
1	A	368	VAL	3.4
1	A	161	TRP	3.3
1	A	279	ASP	3.2
1	A	589	VAL	3.2
1	A	310	PHE	3.1
1	A	594	LEU	3.0
1	A	604	PHE	3.0
1	A	335	LEU	3.0
1	A	526	ILE	3.0
1	A	24	TYR	2.9
1	A	620	GLY	2.9
1	A	322	LYS	2.9
1	A	49	TRP	2.8
1	A	603	PRO	2.7
1	A	176	GLU	2.7
1	A	58	ALA	2.7
1	A	162	LEU	2.7
1	A	398	LEU	2.6

Continued on next page...

Continued from previous page...

Mol	Chain	Res	Type	RSRZ
1	A	586	PRO	2.5
1	A	627	LEU	2.5
1	A	328	VAL	2.5
1	A	602	LYS	2.5
1	A	664	VAL	2.5
1	A	311	VAL	2.4
1	A	220	PRO	2.4
1	A	600	ILE	2.4
1	A	632	ILE	2.4
1	A	480	PRO	2.4
1	A	386	LEU	2.4
1	A	159	THR	2.4
1	A	665	PRO	2.4
1	A	390	PHE	2.4
1	A	587	ASN	2.3
1	A	588	MET	2.3
1	A	89	SER	2.3
1	A	508	GLY	2.3
1	A	112	PHE	2.3
1	A	67	GLN	2.3
1	A	277	ALA	2.3
1	A	614	LEU	2.2
1	A	65	GLY	2.2
1	A	621	LEU	2.1
1	A	14	ARG	2.1
1	A	331	THR	2.1
1	A	482	PRO	2.1
1	A	622	LEU	2.1
1	A	657	THR	2.1
1	A	276	MET	2.1
1	A	648	GLY	2.0
1	A	160	PRO	2.0

6.2 Non-standard residues in protein, DNA, RNA chains [i](#)

There are no non-standard protein/DNA/RNA residues in this entry.

6.3 Carbohydrates [i](#)

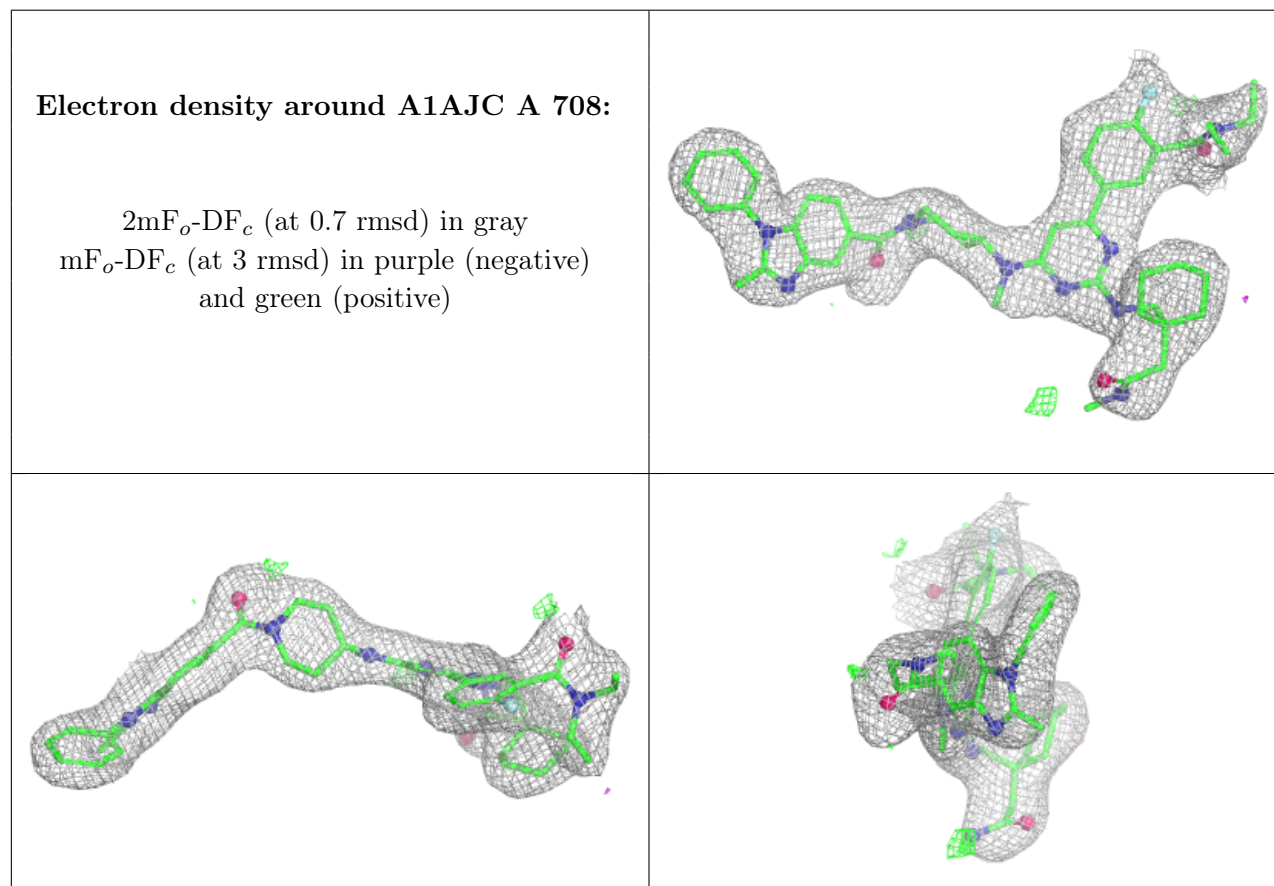
There are no monosaccharides in this entry.

6.4 Ligands [i](#)

In the following table, the Atoms column lists the number of modelled atoms in the group and the number defined in the chemical component dictionary. The B-factors column lists the minimum, median, 95th percentile and maximum values of B factors of atoms in the group. The column labelled 'Q< 0.9' lists the number of atoms with occupancy less than 0.9.

Mol	Type	Chain	Res	Atoms	RSCC	RSR	B-factors(Å ²)	Q<0.9
2	ACT	A	701	4/4	0.95	0.11	59,59,61,64	0
2	ACT	A	702	4/4	0.95	0.11	60,63,67,68	0
4	A1AJC	A	708	59/59	0.95	0.09	38,56,75,89	0
3	CA	A	703	1/1	0.96	0.05	57,57,57,57	0
3	CA	A	706	1/1	0.98	0.04	55,55,55,55	0
3	CA	A	704	1/1	0.99	0.02	41,41,41,41	0
3	CA	A	707	1/1	0.99	0.08	53,53,53,53	0
3	CA	A	705	1/1	0.99	0.03	54,54,54,54	0

The following is a graphical depiction of the model fit to experimental electron density of all instances of the Ligand of Interest. In addition, ligands with molecular weight > 250 and outliers as shown on the geometry validation Tables will also be included. Each fit is shown from different orientation to approximate a three-dimensional view.



6.5 Other polymers [i](#)

There are no such residues in this entry.