



wwPDB X-ray Structure Validation Summary Report ⓘ

Mar 25, 2024 – 03:11 pm GMT

PDB ID : 8BAV
Title : Secretagogin (human) in complex with its target peptide from SNAP-25
Authors : Schnell, R.; Szodorai, E.
Deposited on : 2022-10-12
Resolution : 2.30 Å(reported)

This is a wwPDB X-ray Structure Validation Summary Report for a publicly released PDB entry.

We welcome your comments at validation@mail.wwpdb.org

A user guide is available at

<https://www.wwpdb.org/validation/2017/XrayValidationReportHelp>

with specific help available everywhere you see the ⓘ symbol.

The types of validation reports are described at

<http://www.wwpdb.org/validation/2017/FAQs#types>.

The following versions of software and data (see [references ⓘ](#)) were used in the production of this report:

MolProbity : 4.02b-467
Mogul : 1.8.4, CSD as541be (2020)
Xtriage (Phenix) : 1.13
EDS : 2.36
Percentile statistics : 20191225.v01 (using entries in the PDB archive December 25th 2019)
Refmac : 5.8.0158
CCP4 : 7.0.044 (Gargrove)
Ideal geometry (proteins) : Engh & Huber (2001)
Ideal geometry (DNA, RNA) : Parkinson et al. (1996)
Validation Pipeline (wwPDB-VP) : 2.36

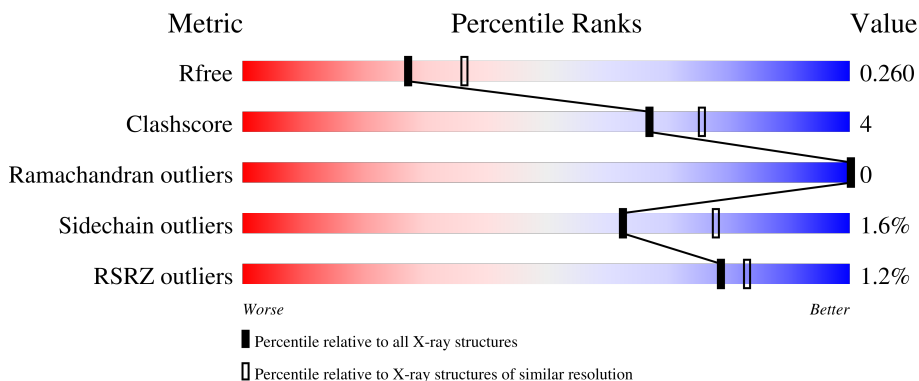
1 Overall quality at a glance

The following experimental techniques were used to determine the structure:

X-RAY DIFFRACTION

The reported resolution of this entry is 2.30 Å.

Percentile scores (ranging between 0-100) for global validation metrics of the entry are shown in the following graphic. The table shows the number of entries on which the scores are based.



Metric	Whole archive (#Entries)	Similar resolution (#Entries, resolution range(Å))
R_{free}	130704	5042 (2.30-2.30)
Clashscore	141614	5643 (2.30-2.30)
Ramachandran outliers	138981	5575 (2.30-2.30)
Sidechain outliers	138945	5575 (2.30-2.30)
RSRZ outliers	127900	4938 (2.30-2.30)

The table below summarises the geometric issues observed across the polymeric chains and their fit to the electron density. The red, orange, yellow and green segments of the lower bar indicate the fraction of residues that contain outliers for ≥ 3 , 2, 1 and 0 types of geometric quality criteria respectively. A grey segment represents the fraction of residues that are not modelled. The numeric value for each fraction is indicated below the corresponding segment, with a dot representing fractions $\leq 5\%$. The upper red bar (where present) indicates the fraction of residues that have poor fit to the electron density. The numeric value is given above the bar.

Mol	Chain	Length	Quality of chain
1	A	256	 88% 7% 5%
1	B	256	 88% 8% 5%
2	C	276	 83% 11% 5% 1%
2	D	276	 81% 11% 7% 1%

2 Entry composition

There are 6 unique types of molecules in this entry. The entry contains 8620 atoms, of which 0 are hydrogens and 0 are deuteriums.

In the tables below, the ZeroOcc column contains the number of atoms modelled with zero occupancy, the AltConf column contains the number of residues with at least one atom in alternate conformation and the Trace column contains the number of residues modelled with at most 2 atoms.

- Molecule 1 is a protein called Green fluorescent protein, Synaptosomal-associated protein 25.

Mol	Chain	Residues	Atoms					ZeroOcc	AltConf	Trace
			Total	C	N	O	S			
1	A	244	1949	1232	333	375	9	0	1	0
1	B	244	1957	1237	337	374	9	0	2	0

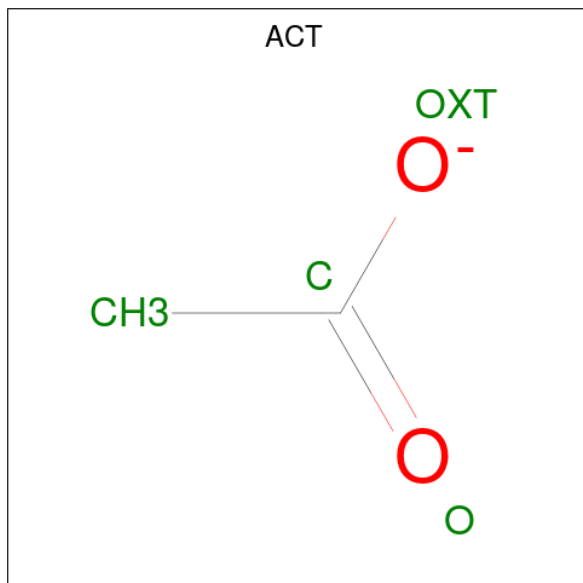
There are 24 discrepancies between the modelled and reference sequences:

Chain	Residue	Modelled	Actual	Comment	Reference
A	-1	SER	-	expression tag	UNP P42212
A	0	MET	-	expression tag	UNP P42212
A	1	ALA	-	expression tag	UNP P42212
A	64	LEU	PHE	engineered mutation	UNP P42212
A	66	CRO	SER	chromophore	UNP P42212
A	66	CRO	TYR	chromophore	UNP P42212
A	66	CRO	GLY	chromophore	UNP P42212
A	80	ARG	GLN	engineered mutation	UNP P42212
A	167	THR	ILE	engineered mutation	UNP P42212
A	229	THR	-	linker	UNP P42212
A	230	MET	-	linker	UNP P42212
A	231	ALA	-	linker	UNP P42212
B	-1	SER	-	expression tag	UNP P42212
B	0	MET	-	expression tag	UNP P42212
B	1	ALA	-	expression tag	UNP P42212
B	64	LEU	PHE	engineered mutation	UNP P42212
B	66	CRO	SER	chromophore	UNP P42212
B	66	CRO	TYR	chromophore	UNP P42212
B	66	CRO	GLY	chromophore	UNP P42212
B	80	ARG	GLN	engineered mutation	UNP P42212
B	167	THR	ILE	engineered mutation	UNP P42212
B	229	THR	-	linker	UNP P42212
B	230	MET	-	linker	UNP P42212
B	231	ALA	-	linker	UNP P42212

- Molecule 2 is a protein called Secretagogin.

Mol	Chain	Residues	Atoms					ZeroOcc	AltConf	Trace
			Total	C	N	O	S			
2	C	264	Total 2155	C 1371	N 367	O 402	S 15	0	0	0
2	D	257	Total 2113	C 1348	N 357	O 393	S 15	0	1	0

- Molecule 3 is ACETATE ION (three-letter code: ACT) (formula: C₂H₃O₂).

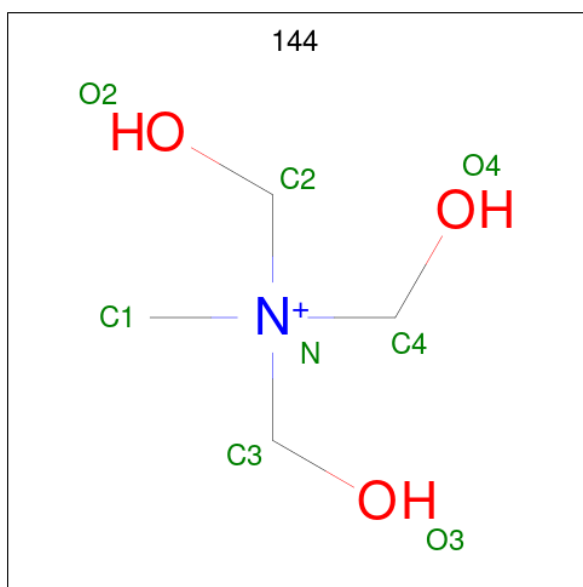


Mol	Chain	Residues	Atoms			ZeroOcc	AltConf
			Total	C	O		
3	A	1	Total 4	C 2	O 2	0	0
3	B	1	Total 4	C 2	O 2	0	0

- Molecule 4 is CALCIUM ION (three-letter code: CA) (formula: Ca).

Mol	Chain	Residues	Atoms		ZeroOcc	AltConf
			Total	Ca		
4	C	4	Total 4	Ca 4	0	0
4	D	4	Total 4	Ca 4	0	0

- Molecule 5 is TRIS-HYDROXYMETHYL-METHYL-AMMONIUM (three-letter code: 144) (formula: C₄H₁₂NO₃).



Mol	Chain	Residues	Atoms				ZeroOcc	AltConf
			Total	C	N	O		
5	D	1	8	4	1	3	0	0


- Molecule 6 is water.

Mol	Chain	Residues	Atoms		ZeroOcc	AltConf
6	A	128	Total	O	0	0
			128	128		
6	B	123	Total	O	0	0
			123	123		
6	C	98	Total	O	0	0
			98	98		
6	D	73	Total	O	0	0
			73	73		

3 Residue-property plots [i](#)

These plots are drawn for all protein, RNA, DNA and oligosaccharide chains in the entry. The first graphic for a chain summarises the proportions of the various outlier classes displayed in the second graphic. The second graphic shows the sequence view annotated by issues in geometry and electron density. Residues are color-coded according to the number of geometric quality criteria for which they contain at least one outlier: green = 0, yellow = 1, orange = 2 and red = 3 or more. A red dot above a residue indicates a poor fit to the electron density ($RSRZ > 2$). Stretches of 2 or more consecutive residues without any outlier are shown as a green connector. Residues present in the sample, but not in the model, are shown in grey.

- Molecule 1: Green fluorescent protein,Synaptosomal-associated protein 25

Chain A: 




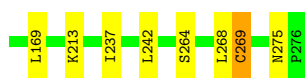
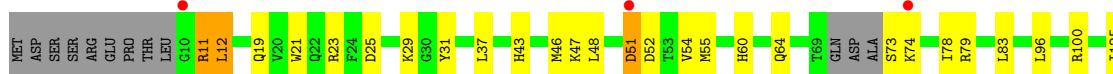
- Molecule 1: Green fluorescent protein,Synaptosomal-associated protein 25

Chain B: 




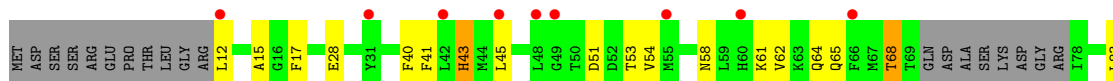
- Molecule 2: Secretagogin

Chain C: 



- Molecule 2: Secretagogin

Chain D: 



4 Data and refinement statistics

Property	Value	Source
Space group	P 21 21 21	Depositor
Cell constants a, b, c, α , β , γ	70.54Å 120.44Å 124.07Å 90.00° 90.00° 90.00°	Depositor
Resolution (Å)	41.36 – 2.30 39.11 – 2.30	Depositor EDS
% Data completeness (in resolution range)	99.6 (41.36-2.30) 99.6 (39.11-2.30)	Depositor EDS
R_{merge}	0.10	Depositor
R_{sym}	(Not available)	Depositor
$\langle I/\sigma(I) \rangle$ ¹	1.88 (at 2.29Å)	Xtrriage
Refinement program	REFMAC 5.8.0103	Depositor
R, R_{free}	0.188 , 0.262 0.190 , 0.260	Depositor DCC
R_{free} test set	2449 reflections (5.15%)	wwPDB-VP
Wilson B-factor (Å ²)	33.9	Xtrriage
Anisotropy	0.295	Xtrriage
Bulk solvent k_{sol} (e/Å ³), B_{sol} (Å ²)	0.31 , 31.9	EDS
L-test for twinning ²	$\langle L \rangle = 0.47$, $\langle L^2 \rangle = 0.30$	Xtrriage
Estimated twinning fraction	0.024 for -h,l,k	Xtrriage
F_o, F_c correlation	0.95	EDS
Total number of atoms	8620	wwPDB-VP
Average B, all atoms (Å ²)	40.0	wwPDB-VP

Xtrriage's analysis on translational NCS is as follows: *The largest off-origin peak in the Patterson function is 3.46% of the height of the origin peak. No significant pseudotranslation is detected.*

¹Intensities estimated from amplitudes.

²Theoretical values of $\langle |L| \rangle$, $\langle L^2 \rangle$ for acentric reflections are 0.5, 0.333 respectively for untwinned datasets, and 0.375, 0.2 for perfectly twinned datasets.

5 Model quality [i](#)

5.1 Standard geometry [i](#)

Bond lengths and bond angles in the following residue types are not validated in this section: ACT, 144, CA, CRO

The Z score for a bond length (or angle) is the number of standard deviations the observed value is removed from the expected value. A bond length (or angle) with $|Z| > 5$ is considered an outlier worth inspection. RMSZ is the root-mean-square of all Z scores of the bond lengths (or angles).

Mol	Chain	Bond lengths		Bond angles	
		RMSZ	# Z >5	RMSZ	# Z >5
1	A	0.65	0/1968	0.73	0/2656
1	B	0.61	0/1979	0.76	1/2670 (0.0%)
2	C	0.59	0/2192	0.67	0/2931
2	D	0.59	0/2150	0.71	0/2877
All	All	0.61	0/8289	0.72	1/11134 (0.0%)

There are no bond length outliers.

All (1) bond angle outliers are listed below:

Mol	Chain	Res	Type	Atoms	Z	Observed(°)	Ideal(°)
1	B	19	ASP	CB-CG-OD2	5.70	123.43	118.30

There are no chirality outliers.

There are no planarity outliers.

5.2 Too-close contacts [i](#)

In the following table, the Non-H and H(model) columns list the number of non-hydrogen atoms and hydrogen atoms in the chain respectively. The H(added) column lists the number of hydrogen atoms added and optimized by MolProbity. The Clashes column lists the number of clashes within the asymmetric unit, whereas Symm-Clashes lists symmetry-related clashes.

Mol	Chain	Non-H	H(model)	H(added)	Clashes	Symm-Clashes
1	A	1949	0	1888	10	0
1	B	1957	0	1903	9	0
2	C	2155	0	2141	20	0
2	D	2113	0	2099	27	0
3	A	4	0	3	1	0
3	B	4	0	3	0	0

Continued on next page...

Continued from previous page...

Mol	Chain	Non-H	H(model)	H(added)	Clashes	Symm-Clashes
4	C	4	0	0	0	0
4	D	4	0	0	0	0
5	D	8	0	12	3	0
6	A	128	0	0	0	0
6	B	123	0	0	2	0
6	C	98	0	0	1	0
6	D	73	0	0	0	0
All	All	8620	0	8049	64	0

The all-atom clashscore is defined as the number of clashes found per 1000 atoms (including hydrogen atoms). The all-atom clashscore for this structure is 4.

The worst 5 of 64 close contacts within the same asymmetric unit are listed below, sorted by their clash magnitude.

Atom-1	Atom-2	Interatomic distance (Å)	Clash overlap (Å)
2:D:64:GLN:O	2:D:68:THR:OG1	1.89	0.89
2:D:54:VAL:HG12	2:D:58:ASN:OD1	1.78	0.81
1:B:74:TYR:O	1:B:79:LYS:NZ	2.15	0.78
2:D:61:LYS:O	2:D:65:GLN:HG2	1.87	0.73
2:C:96:LEU:O	2:C:100:ARG:NH1	2.23	0.72

There are no symmetry-related clashes.

5.3 Torsion angles [i](#)

5.3.1 Protein backbone [i](#)

In the following table, the Percentiles column shows the percent Ramachandran outliers of the chain as a percentile score with respect to all X-ray entries followed by that with respect to entries of similar resolution.

The Analysed column shows the number of residues for which the backbone conformation was analysed, and the total number of residues.

Mol	Chain	Analysed	Favoured	Allowed	Outliers	Percentiles	
1	A	240/256 (94%)	235 (98%)	5 (2%)	0	100	100
1	B	241/256 (94%)	236 (98%)	5 (2%)	0	100	100
2	C	260/276 (94%)	255 (98%)	5 (2%)	0	100	100
2	D	254/276 (92%)	246 (97%)	8 (3%)	0	100	100

Continued on next page...

Continued from previous page...

Mol	Chain	Analysed	Favoured	Allowed	Outliers	Percentiles	
All	All	995/1064 (94%)	972 (98%)	23 (2%)	0	100	100

There are no Ramachandran outliers to report.

5.3.2 Protein sidechains [i](#)

In the following table, the Percentiles column shows the percent sidechain outliers of the chain as a percentile score with respect to all X-ray entries followed by that with respect to entries of similar resolution.

The Analysed column shows the number of residues for which the sidechain conformation was analysed, and the total number of residues.

Mol	Chain	Analysed	Rotameric	Outliers	Percentiles	
1	A	211/221 (96%)	211 (100%)	0	100	100
1	B	212/221 (96%)	210 (99%)	2 (1%)	78	89
2	C	232/243 (96%)	226 (97%)	6 (3%)	46	63
2	D	228/243 (94%)	222 (97%)	6 (3%)	46	63
All	All	883/928 (95%)	869 (98%)	14 (2%)	62	78

5 of 14 residues with a non-rotameric sidechain are listed below:

Mol	Chain	Res	Type
2	C	269	CYS
2	D	43	HIS
2	D	269	CYS
2	D	170	ASP
2	D	242	LEU

Sometimes sidechains can be flipped to improve hydrogen bonding and reduce clashes. All (3) such sidechains are listed below:

Mol	Chain	Res	Type
1	A	184	GLN
2	D	60	HIS
2	D	102	ASN

5.3.3 RNA [i](#)

There are no RNA molecules in this entry.

5.4 Non-standard residues in protein, DNA, RNA chains [i](#)

2 non-standard protein/DNA/RNA residues are modelled in this entry.

In the following table, the Counts columns list the number of bonds (or angles) for which Mogul statistics could be retrieved, the number of bonds (or angles) that are observed in the model and the number of bonds (or angles) that are defined in the Chemical Component Dictionary. The Link column lists molecule types, if any, to which the group is linked. The Z score for a bond length (or angle) is the number of standard deviations the observed value is removed from the expected value. A bond length (or angle) with $|Z| > 2$ is considered an outlier worth inspection. RMSZ is the root-mean-square of all Z scores of the bond lengths (or angles).

Mol	Type	Chain	Res	Link	Bond lengths			Bond angles		
					Counts	RMSZ	# Z > 2	Counts	RMSZ	# Z > 2
1	CRO	B	66	1	23,23,24	3.20	4 (17%)	30,32,34	2.53	7 (23%)
1	CRO	A	66	1	23,23,24	3.31	4 (17%)	30,32,34	3.36	8 (26%)

In the following table, the Chirals column lists the number of chiral outliers, the number of chiral centers analysed, the number of these observed in the model and the number defined in the Chemical Component Dictionary. Similar counts are reported in the Torsion and Rings columns. '-' means no outliers of that kind were identified.

Mol	Type	Chain	Res	Link	Chirals	Torsions	Rings
1	CRO	B	66	1	-	1/12/31/32	0/2/2/2
1	CRO	A	66	1	-	2/12/31/32	0/2/2/2

The worst 5 of 8 bond length outliers are listed below:

Mol	Chain	Res	Type	Atoms	Z	Observed(Å)	Ideal(Å)
1	A	66	CRO	CB2-CA2	14.13	1.46	1.35
1	B	66	CRO	CB2-CA2	13.78	1.46	1.35
1	A	66	CRO	C1-N2	4.79	1.39	1.32
1	B	66	CRO	C1-N2	4.74	1.39	1.32
1	A	66	CRO	O2-C2	3.21	1.29	1.23

The worst 5 of 15 bond angle outliers are listed below:

Mol	Chain	Res	Type	Atoms	Z	Observed(°)	Ideal(°)
1	A	66	CRO	O2-C2-CA2	-11.40	124.56	130.96
1	A	66	CRO	CA2-C2-N3	10.69	108.43	103.37
1	B	66	CRO	CA2-C2-N3	9.47	107.85	103.37
1	B	66	CRO	OG1-CB1-CA1	5.32	120.42	109.04
1	A	66	CRO	CB2-CA2-C2	5.30	128.60	122.28

There are no chirality outliers.

All (3) torsion outliers are listed below:

Mol	Chain	Res	Type	Atoms
1	B	66	CRO	N1-CA1-CB1-CG1
1	A	66	CRO	N2-C1-CA1-CB1
1	A	66	CRO	C3-CA3-N3-C2

There are no ring outliers.

No monomer is involved in short contacts.

5.5 Carbohydrates [i](#)

There are no monosaccharides in this entry.

5.6 Ligand geometry [i](#)

Of 11 ligands modelled in this entry, 8 are monoatomic - leaving 3 for Mogul analysis.

In the following table, the Counts columns list the number of bonds (or angles) for which Mogul statistics could be retrieved, the number of bonds (or angles) that are observed in the model and the number of bonds (or angles) that are defined in the Chemical Component Dictionary. The Link column lists molecule types, if any, to which the group is linked. The Z score for a bond length (or angle) is the number of standard deviations the observed value is removed from the expected value. A bond length (or angle) with $|Z| > 2$ is considered an outlier worth inspection. RMSZ is the root-mean-square of all Z scores of the bond lengths (or angles).

Mol	Type	Chain	Res	Link	Bond lengths			Bond angles		
					Counts	RMSZ	$\# Z > 2$	Counts	RMSZ	$\# Z > 2$
3	ACT	A	301	-	3,3,3	0.69	0	3,3,3	0.92	0
3	ACT	B	301	-	3,3,3	0.73	0	3,3,3	1.14	0
5	144	D	305	-	1,7,7	0.22	0	3,9,9	0.51	0

In the following table, the Chirals column lists the number of chiral outliers, the number of chiral centers analysed, the number of these observed in the model and the number defined in the Chemical Component Dictionary. Similar counts are reported in the Torsion and Rings columns. '-' means no outliers of that kind were identified.

Mol	Type	Chain	Res	Link	Chirals	Torsions	Rings
5	144	D	305	-	-	0/0/9/9	-

There are no bond length outliers.

There are no bond angle outliers.

There are no chirality outliers.

There are no torsion outliers.

There are no ring outliers.

2 monomers are involved in 4 short contacts:

Mol	Chain	Res	Type	Clashes	Symm-Clashes
3	A	301	ACT	1	0
5	D	305	144	3	0

5.7 Other polymers [i](#)

There are no such residues in this entry.

5.8 Polymer linkage issues [i](#)

There are no chain breaks in this entry.

6 Fit of model and data [i](#)

6.1 Protein, DNA and RNA chains [i](#)

In the following table, the column labelled ‘#RSRZ > 2’ contains the number (and percentage) of RSRZ outliers, followed by percent RSRZ outliers for the chain as percentile scores relative to all X-ray entries and entries of similar resolution. The OWAB column contains the minimum, median, 95th percentile and maximum values of the occupancy-weighted average B-factor per residue. The column labelled ‘Q < 0.9’ lists the number of (and percentage) of residues with an average occupancy less than 0.9.

Mol	Chain	Analysed	<RSRZ>	#RSRZ>2	OWAB(Å ²)	Q<0.9
1	A	243/256 (94%)	-0.54	0 100 100	24, 32, 48, 65	0
1	B	243/256 (94%)	-0.56	0 100 100	25, 34, 48, 65	0
2	C	264/276 (95%)	-0.36	3 (1%) 80 85	26, 38, 65, 102	0
2	D	257/276 (93%)	-0.09	9 (3%) 44 51	26, 42, 95, 113	0
All	All	1007/1064 (94%)	-0.38	12 (1%) 79 83	24, 36, 71, 113	0

The worst 5 of 12 RSRZ outliers are listed below:

Mol	Chain	Res	Type	RSRZ
2	D	12	LEU	5.0
2	D	42	LEU	4.6
2	D	66	PHE	4.5
2	C	10	GLY	4.5
2	D	49	GLY	4.3

6.2 Non-standard residues in protein, DNA, RNA chains [i](#)

In the following table, the Atoms column lists the number of modelled atoms in the group and the number defined in the chemical component dictionary. The B-factors column lists the minimum, median, 95th percentile and maximum values of B factors of atoms in the group. The column labelled ‘Q < 0.9’ lists the number of atoms with occupancy less than 0.9.

Mol	Type	Chain	Res	Atoms	RSCC	RSR	B-factors(Å ²)	Q<0.9
1	CRO	A	66	22/23	0.96	0.12	22,24,29,40	0
1	CRO	B	66	22/23	0.97	0.11	23,27,38,48	0

6.3 Carbohydrates [i](#)

There are no monosaccharides in this entry.

6.4 Ligands [i](#)

In the following table, the Atoms column lists the number of modelled atoms in the group and the number defined in the chemical component dictionary. The B-factors column lists the minimum, median, 95th percentile and maximum values of B factors of atoms in the group. The column labelled 'Q<0.9' lists the number of atoms with occupancy less than 0.9.

Mol	Type	Chain	Res	Atoms	RSCC	RSR	B-factors(Å ²)	Q<0.9
3	ACT	B	301	4/4	0.88	0.16	37,41,41,46	0
5	144	D	305	8/8	0.91	0.15	30,38,39,42	0
4	CA	D	302	1/1	0.94	0.08	43,43,43,43	0
3	ACT	A	301	4/4	0.96	0.11	41,42,43,45	0
4	CA	C	302	1/1	0.97	0.06	45,45,45,45	0
4	CA	C	303	1/1	0.97	0.06	54,54,54,54	0
4	CA	D	301	1/1	0.99	0.05	32,32,32,32	0
4	CA	C	301	1/1	0.99	0.11	35,35,35,35	0
4	CA	D	303	1/1	0.99	0.07	52,52,52,52	0
4	CA	D	304	1/1	0.99	0.05	30,30,30,30	0
4	CA	C	304	1/1	0.99	0.06	31,31,31,31	0

6.5 Other polymers [i](#)

There are no such residues in this entry.