



Full wwPDB X-ray Structure Validation Report ⓘ

Mar 7, 2019 – 10:08 AM EST

PDB ID : 4BG6
Title : 14-3-3 interaction with Rnd3 prenyl-phosphorylation motif
Authors : Riou, P.; Kjaer, S.; Purkiss, A.; O'Reilly, N.; McDonald, N.Q.
Deposited on : 2013-03-23
Resolution : 2.30 Å(reported)

This is a Full wwPDB X-ray Structure Validation Report for a publicly released PDB entry.

We welcome your comments at validation@mail.wwpdb.org

A user guide is available at

<https://www.wwpdb.org/validation/2017/XrayValidationReportHelp>

with specific help available everywhere you see the ⓘ symbol.

The following versions of software and data (see [references ⓘ](#)) were used in the production of this report:

MolProbity : 4.02b-467
Mogul : 1.7.3 (157068), CSD as539be (2018)
Xtriage (Phenix) : 1.13
EDS : rb-20031633
Percentile statistics : 20171227.v01 (using entries in the PDB archive December 27th 2017)
Refmac : 5.8.0158
CCP4 : 7.0 (Gargrove)
Ideal geometry (proteins) : Engh & Huber (2001)
Ideal geometry (DNA, RNA) : Parkinson et al. (1996)
Validation Pipeline (wwPDB-VP) : rb-20031633

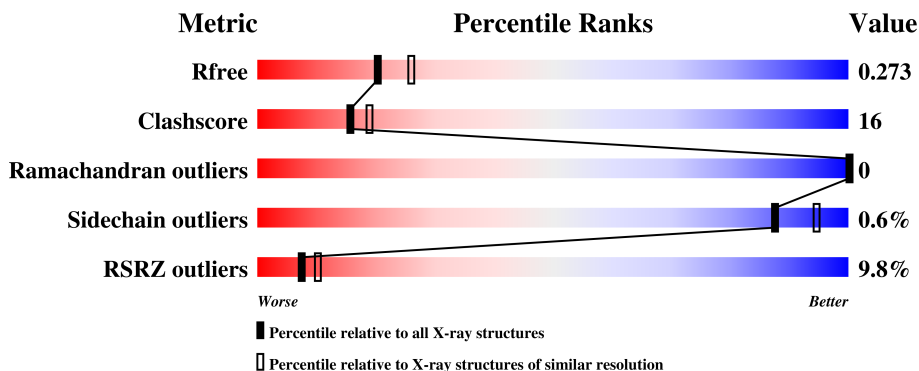
1 Overall quality at a glance

The following experimental techniques were used to determine the structure:

X-RAY DIFFRACTION

The reported resolution of this entry is 2.30 Å.

Percentile scores (ranging between 0-100) for global validation metrics of the entry are shown in the following graphic. The table shows the number of entries on which the scores are based.



Metric	Whole archive (#Entries)	Similar resolution (#Entries, resolution range(Å))
R_{free}	111664	4477 (2.30-2.30)
Clashscore	122126	5072 (2.30-2.30)
Ramachandran outliers	120053	5022 (2.30-2.30)
Sidechain outliers	120020	5021 (2.30-2.30)
RSRZ outliers	108989	4374 (2.30-2.30)

The table below summarises the geometric issues observed across the polymeric chains and their fit to the electron density. The red, orange, yellow and green segments on the lower bar indicate the fraction of residues that contain outliers for ≥ 3 , 2, 1 and 0 types of geometric quality criteria. A grey segment represents the fraction of residues that are not modelled. The numeric value for each fraction is indicated below the corresponding segment, with a dot representing fractions $\leq 5\%$. The upper red bar (where present) indicates the fraction of residues that have poor fit to the electron density. The numeric value is given above the bar.

Mol	Chain	Length	Quality of chain
1	A	245	
1	B	245	
2	Q	10	
2	R	10	

The following table lists non-polymeric compounds, carbohydrate monomers and non-standard

residues in protein, DNA, RNA chains that are outliers for geometric or electron-density-fit criteria:

Mol	Type	Chain	Res	Chirality	Geometry	Clashes	Electron density
3	PE4	A	1232	-	-	-	X
3	PE4	B	1231	-	-	-	X
4	FAR	Q	348	-	-	-	X
4	FAR	R	348	-	-	-	X

2 Entry composition [i](#)

There are 5 unique types of molecules in this entry. The entry contains 3795 atoms, of which 35 are hydrogens and 0 are deuteriums.

In the tables below, the ZeroOcc column contains the number of atoms modelled with zero occupancy, the AltConf column contains the number of residues with at least one atom in alternate conformation and the Trace column contains the number of residues modelled with at most 2 atoms.

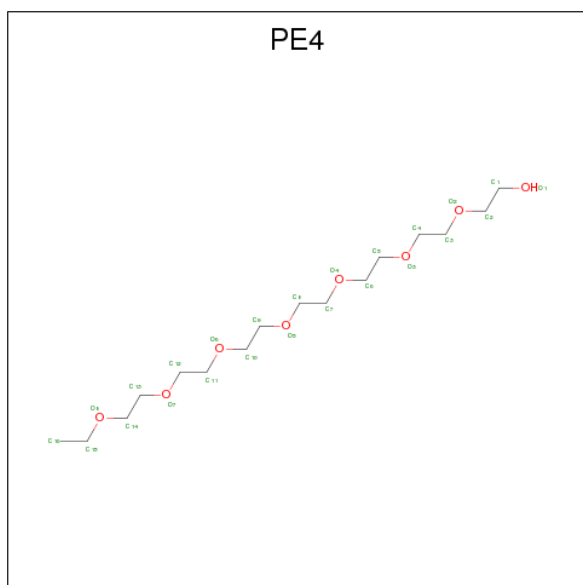
- Molecule 1 is a protein called 14-3-3 PROTEIN ZETA/DELTA.

Mol	Chain	Residues	Atoms					ZeroOcc	AltConf	Trace
			Total	C	N	O	S			
1	A	228	Total	C	N	O	S	0	1	0
			1740	1096	286	349	9			
1	B	229	Total	C	N	O	S	0	0	0
			1782	1125	295	353	9			

- Molecule 2 is a protein called RHO-RELATED GTP-BINDING PROTEIN RHOE.

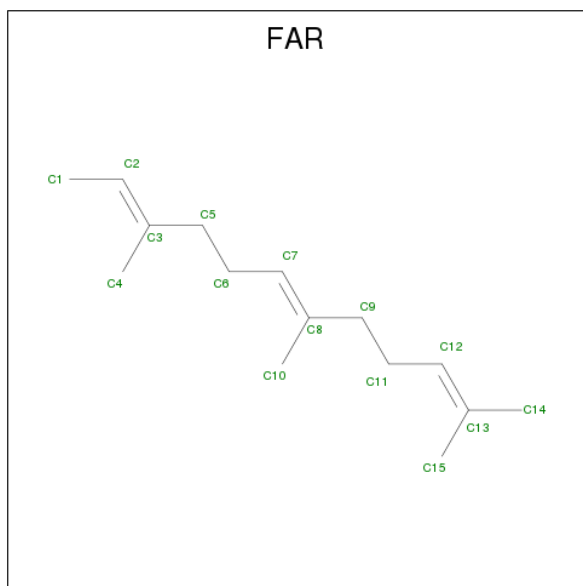
Mol	Chain	Residues	Atoms					ZeroOcc	AltConf	Trace	
			Total	C	N	O	P				S
2	Q	7	Total	C	N	O	P	S	0	0	0
			57	31	10	14	1	1			
2	R	7	Total	C	N	O	P	S	0	0	0
			53	29	8	14	1	1			

- Molecule 3 is 2-{2-[2-(2-{2-[2-(2-ETHOXY-ETHOXY)-ETHOXY]-ETHOXY)-ETHOXY]-ETHOXY}-ETHANOL (three-letter code: PE4) (formula: C₁₆H₃₄O₈).



Mol	Chain	Residues	Atoms				ZeroOcc	AltConf
3	A	1	Total	C	H	O	0	0
			23	6	13	4		
3	B	1	Total	C	H	O	0	0
			31	9	17	5		
3	B	1	Total	C	H	O	0	0
			9	2	5	2		

- Molecule 4 is FARNESYL (three-letter code: FAR) (formula: C₁₅H₂₆).



Mol	Chain	Residues	Atoms		ZeroOcc	AltConf
4	Q	1	Total	C	0	0
			10	10		
4	R	1	Total	C	0	0
			10	10		

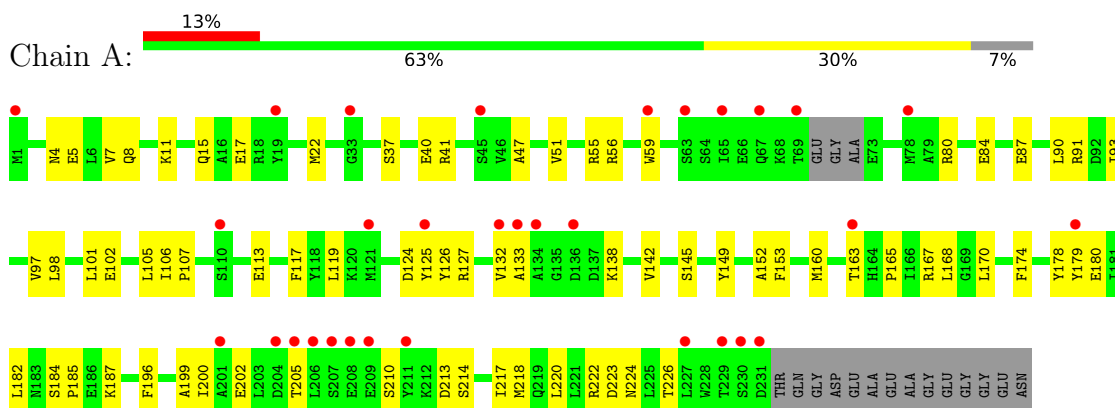
- Molecule 5 is water.

Mol	Chain	Residues	Atoms		ZeroOcc	AltConf
5	A	38	Total	O	0	0
			38	38		
5	B	41	Total	O	0	0
			41	41		
5	Q	1	Total	O	0	0
			1	1		

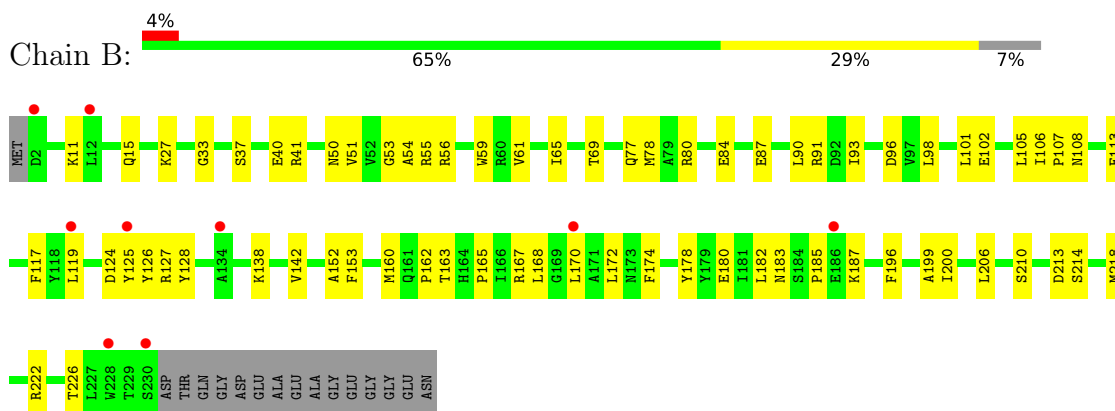
3 Residue-property plots [i](#)

These plots are drawn for all protein, RNA and DNA chains in the entry. The first graphic for a chain summarises the proportions of the various outlier classes displayed in the second graphic. The second graphic shows the sequence view annotated by issues in geometry and electron density. Residues are color-coded according to the number of geometric quality criteria for which they contain at least one outlier: green = 0, yellow = 1, orange = 2 and red = 3 or more. A red dot above a residue indicates a poor fit to the electron density ($RSRZ > 2$). Stretches of 2 or more consecutive residues without any outlier are shown as a green connector. Residues present in the sample, but not in the model, are shown in grey.

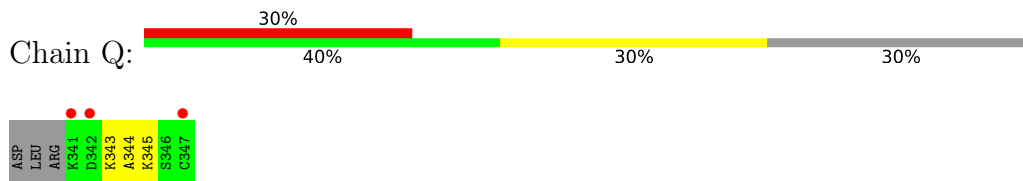
- Molecule 1: 14-3-3 PROTEIN ZETA/DELTA



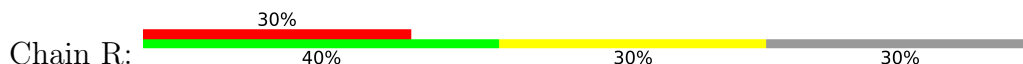
- Molecule 1: 14-3-3 PROTEIN ZETA/DELTA



- Molecule 2: RHO-RELATED GTP-BINDING PROTEIN RHOE



- Molecule 2: RHO-RELATED GTP-BINDING PROTEIN RHOE



ASP	
LEU	
ARG	
K341	●
D342	●
K343	
S346	
C347	●

4 Data and refinement statistics

Property	Value	Source
Space group	P 21 21 21	Depositor
Cell constants a, b, c, α , β , γ	70.78Å 81.31Å 111.19Å 90.00° 90.00° 90.00°	Depositor
Resolution (Å)	38.51 – 2.30 38.51 – 2.30	Depositor EDS
% Data completeness (in resolution range)	98.9 (38.51-2.30) 92.7 (38.51-2.30)	Depositor EDS
R_{merge}	0.08	Depositor
R_{sym}	(Not available)	Depositor
$\langle I/\sigma(I) \rangle$ ¹	1.42 (at 2.29Å)	Xtrriage
Refinement program	PHENIX (PHENIX.REFINE)	Depositor
R, R_{free}	0.244 , 0.273 0.245 , 0.273	Depositor DCC
R_{free} test set	1471 reflections (5.09%)	wwPDB-VP
Wilson B-factor (Å ²)	51.0	Xtrriage
Anisotropy	0.627	Xtrriage
Bulk solvent k_{sol} (e/Å ³), B_{sol} (Å ²)	0.32 , 39.8	EDS
L-test for twinning ²	$\langle L \rangle = 0.51$, $\langle L^2 \rangle = 0.35$	Xtrriage
Estimated twinning fraction	No twinning to report.	Xtrriage
F_o, F_c correlation	0.94	EDS
Total number of atoms	3795	wwPDB-VP
Average B, all atoms (Å ²)	69.0	wwPDB-VP

Xtrriage's analysis on translational NCS is as follows: *The largest off-origin peak in the Patterson function is 18.46% of the height of the origin peak. No significant pseudotranslation is detected.*

¹Intensities estimated from amplitudes.

²Theoretical values of $\langle |L| \rangle$, $\langle L^2 \rangle$ for acentric reflections are 0.5, 0.333 respectively for untwinned datasets, and 0.375, 0.2 for perfectly twinned datasets.

5 Model quality [i](#)

5.1 Standard geometry [i](#)

Bond lengths and bond angles in the following residue types are not validated in this section: FAR, PE4, SEP

The Z score for a bond length (or angle) is the number of standard deviations the observed value is removed from the expected value. A bond length (or angle) with $|Z| > 5$ is considered an outlier worth inspection. RMSZ is the root-mean-square of all Z scores of the bond lengths (or angles).

Mol	Chain	Bond lengths		Bond angles	
		RMSZ	# Z >5	RMSZ	# Z >5
1	A	0.20	0/1767	0.35	0/2394
1	B	0.20	0/1807	0.36	0/2440
2	Q	0.50	0/45	0.49	0/53
2	R	0.18	0/41	0.37	0/49
All	All	0.21	0/3660	0.36	0/4936

There are no bond length outliers.

There are no bond angle outliers.

There are no chirality outliers.

There are no planarity outliers.

5.2 Too-close contacts [i](#)

In the following table, the Non-H and H(model) columns list the number of non-hydrogen atoms and hydrogen atoms in the chain respectively. The H(added) column lists the number of hydrogen atoms added and optimized by MolProbity. The Clashes column lists the number of clashes within the asymmetric unit, whereas Symm-Clashes lists symmetry related clashes.

Mol	Chain	Non-H	H(model)	H(added)	Clashes	Symm-Clashes
1	A	1740	0	1637	58	0
1	B	1782	0	1711	59	0
2	Q	57	0	54	6	0
2	R	53	0	40	4	0
3	A	10	13	13	0	0
3	B	18	22	22	8	0
4	Q	10	0	14	1	0
4	R	10	0	13	1	0
5	A	38	0	0	0	0

Continued on next page...

Continued from previous page...

Mol	Chain	Non-H	H(model)	H(added)	Clashes	Symm-Clashes
5	B	41	0	0	2	0
5	Q	1	0	0	0	0
All	All	3760	35	3504	113	0

The all-atom clashscore is defined as the number of clashes found per 1000 atoms (including hydrogen atoms). The all-atom clashscore for this structure is 16.

All (113) close contacts within the same asymmetric unit are listed below, sorted by their clash magnitude.

Atom-1	Atom-2	Interatomic distance (Å)	Clash overlap (Å)
1:B:50:ASN:HA	3:B:1231:PE4:C9	1.86	1.04
1:B:56:ARG:HG3	1:B:90:LEU:HD21	1.62	0.81
1:A:113:GLU:HA	1:A:160:MET:CE	2.12	0.79
1:B:172:LEU:HD23	2:R:347:CYS:HB2	1.69	0.75
1:B:50:ASN:O	3:B:1231:PE4:C9	2.34	0.75
1:A:56:ARG:HG3	1:A:90:LEU:HD21	1.74	0.70
1:B:50:ASN:CA	3:B:1231:PE4:C9	2.66	0.70
1:B:113:GLU:HA	1:B:160:MET:CE	2.22	0.70
1:B:106:ILE:HB	1:B:107:PRO:HD3	1.73	0.69
1:A:87:GLU:HB3	1:A:91:ARG:NH1	2.08	0.69
1:A:113:GLU:HA	1:A:160:MET:HE3	1.76	0.67
1:A:220:LEU:CD2	2:Q:345:LYS:HE3	2.24	0.67
1:B:54:ALA:HB1	3:B:1231:PE4:H11	1.78	0.66
1:B:113:GLU:HA	1:B:160:MET:HE3	1.76	0.66
1:B:222:ARG:O	1:B:226:THR:HG23	1.96	0.66
1:A:222:ARG:O	1:A:226:THR:HG23	1.96	0.65
1:B:213:ASP:HB3	4:R:348:FAR:H62	1.78	0.65
1:A:55:ARG:CB	1:A:90:LEU:HD23	2.29	0.62
1:A:213:ASP:HB3	4:Q:348:FAR:H62	1.83	0.61
1:B:37:SER:OG	1:B:40:GLU:HG3	2.01	0.60
1:A:55:ARG:HB3	1:A:90:LEU:HD23	1.84	0.60
1:B:101:LEU:HD23	1:B:105:LEU:HD12	1.82	0.60
1:A:5:GLU:HG3	1:B:78:MET:CE	2.32	0.60
1:A:165:PRO:HG2	1:A:210:SER:HB2	1.84	0.59
1:A:37:SER:OG	1:A:40:GLU:HG3	2.02	0.59
1:A:101:LEU:HD23	1:A:105:LEU:HD12	1.87	0.57
1:A:220:LEU:HD22	2:Q:345:LYS:HE3	1.87	0.56
1:B:87:GLU:HB3	1:B:91:ARG:NH1	2.21	0.55
1:A:87:GLU:HB3	1:A:91:ARG:HH12	1.70	0.55
1:B:55:ARG:CB	1:B:90:LEU:HD23	2.37	0.54
1:A:106:ILE:N	1:A:107:PRO:HD2	2.22	0.54

Continued on next page...

Continued from previous page...

Atom-1	Atom-2	Interatomic distance (Å)	Clash overlap (Å)
1:B:168:LEU:HD21	1:B:199:ALA:HB2	1.89	0.54
1:B:98:LEU:O	1:B:102:GLU:HG2	2.07	0.53
1:A:168:LEU:HD21	1:A:199:ALA:HB2	1.91	0.53
1:A:178:TYR:CD1	1:A:182:LEU:HD12	2.44	0.53
1:B:50:ASN:O	3:B:1231:PE4:O5	2.24	0.53
1:A:223:ASP:OD2	2:Q:345:LYS:NZ	2.31	0.53
1:B:53:GLY:HA3	3:B:1231:PE4:C9	2.39	0.53
1:A:5:GLU:HG3	1:B:78:MET:HE1	1.91	0.52
1:B:138:LYS:O	1:B:142:VAL:HG23	2.10	0.52
1:B:80:ARG:O	1:B:84:GLU:HG3	2.09	0.52
1:B:91:ARG:HD2	5:B:2024:HOH:O	2.10	0.51
1:B:51:VAL:HG12	1:B:93:ILE:HD13	1.93	0.51
1:A:98:LEU:O	1:A:102:GLU:HG2	2.11	0.51
1:A:80:ARG:O	1:A:84:GLU:HG3	2.09	0.51
1:B:178:TYR:CD1	1:B:182:LEU:HD12	2.46	0.51
1:A:160:MET:O	1:A:167:ARG:NH1	2.44	0.50
1:B:119:LEU:CB	1:B:152:ALA:HB2	2.41	0.50
1:A:124:ASP:O	1:A:127:ARG:HB3	2.12	0.50
1:B:163:THR:HB	1:B:206:LEU:HD23	1.93	0.50
1:A:153:PHE:N	1:A:170:LEU:HD21	2.28	0.49
1:B:11:LYS:O	1:B:15:GLN:HG2	2.13	0.48
1:A:119:LEU:CB	1:A:152:ALA:HB2	2.43	0.48
1:B:87:GLU:HB3	1:B:91:ARG:HH12	1.79	0.48
1:A:184:SER:OG	1:A:187:LYS:HD2	2.14	0.48
1:B:153:PHE:N	1:B:170:LEU:HD21	2.28	0.48
1:B:65:ILE:O	1:B:69:THR:HG23	2.13	0.48
1:B:162:PRO:HB2	1:B:199:ALA:HA	1.96	0.48
1:B:41:ARG:HD2	1:B:117:PHE:CD1	2.48	0.48
1:A:138:LYS:O	1:A:142:VAL:HG23	2.14	0.48
1:A:87:GLU:OE1	1:A:91:ARG:NH2	2.43	0.47
1:B:50:ASN:C	3:B:1231:PE4:C9	2.82	0.47
1:A:51:VAL:HG12	1:A:93:ILE:HD13	1.95	0.47
1:B:59:TRP:CD1	1:B:87:GLU:HG3	2.50	0.47
1:A:41:ARG:HD2	1:A:117:PHE:CD1	2.50	0.47
1:A:5:GLU:HG3	1:B:78:MET:HE2	1.96	0.47
1:A:165:PRO:CG	1:A:210:SER:HB2	2.45	0.47
1:B:180:GLU:OE2	2:R:343:LYS:HD2	2.14	0.47
1:B:56:ARG:NH1	2:R:346:SEP:O2P	2.33	0.46
1:B:172:LEU:CD2	2:R:347:CYS:HB2	2.43	0.46
1:A:180:GLU:OE2	2:Q:343:LYS:HD2	2.16	0.46
1:B:214:SER:O	1:B:218:MET:HG3	2.16	0.46

Continued on next page...

Continued from previous page...

Atom-1	Atom-2	Interatomic distance (Å)	Clash overlap (Å)
1:B:178:TYR:CE1	1:B:187:LYS:HE3	2.50	0.46
1:A:15:GLN:O	1:B:61:VAL:HG11	2.16	0.46
1:A:55:ARG:HB2	1:A:90:LEU:HD23	1.98	0.46
1:B:124:ASP:O	1:B:127:ARG:HB3	2.16	0.46
1:B:55:ARG:HB3	1:B:90:LEU:HD23	1.98	0.45
1:A:133:ALA:HB1	1:A:138:LYS:HA	1.98	0.45
1:B:33:GLY:O	1:B:108:ASN:ND2	2.50	0.45
1:B:101:LEU:HD23	1:B:105:LEU:CD1	2.46	0.45
1:A:11:LYS:O	1:A:15:GLN:HG2	2.16	0.45
1:B:119:LEU:HB3	1:B:152:ALA:HB2	1.98	0.45
1:B:77:GLN:HG3	1:B:80:ARG:NH2	2.32	0.45
1:A:179:TYR:HD2	1:A:185:PRO:HA	1.82	0.44
1:B:163:THR:HB	1:B:206:LEU:CD2	2.47	0.44
1:B:165:PRO:HG2	1:B:210:SER:HB2	1.97	0.44
1:A:4:ASN:O	1:A:8[B]:GLN:HG2	2.18	0.44
1:B:125:TYR:HA	1:B:128:TYR:CD2	2.53	0.44
1:A:124:ASP:HA	1:A:149:TYR:OH	2.18	0.44
1:A:119:LEU:HB3	1:A:152:ALA:HB2	1.98	0.43
1:A:196:PHE:CE1	1:A:200:ILE:HG13	2.53	0.43
1:A:202:GLU:OE2	1:A:205:THR:HG21	2.18	0.43
1:A:113:GLU:HA	1:A:160:MET:HE2	1.98	0.43
1:A:163:THR:HG21	1:A:202:GLU:O	2.18	0.43
1:A:41:ARG:HG2	1:A:117:PHE:CE1	2.54	0.43
1:A:213:ASP:O	1:A:217:ILE:HG13	2.19	0.43
1:B:55:ARG:HB2	1:B:90:LEU:HD23	2.00	0.43
1:A:220:LEU:HD23	2:Q:345:LYS:HE3	1.96	0.43
1:A:22:MET:HG2	1:A:47:ALA:HB2	2.01	0.43
1:B:98:LEU:HD22	1:B:126:TYR:CE2	2.53	0.42
1:A:214:SER:O	1:A:218:MET:HG3	2.19	0.42
1:A:97:VAL:HG11	1:A:125:TYR:CE1	2.55	0.42
1:B:160:MET:O	1:B:167:ARG:NH1	2.53	0.41
1:B:27:LYS:HE3	1:B:96:ASP:OD1	2.20	0.41
1:A:7:VAL:O	1:A:11:LYS:HG3	2.20	0.41
1:A:59:TRP:CE2	1:A:132:VAL:HG12	2.56	0.41
1:A:98:LEU:HD22	1:A:126:TYR:CE2	2.56	0.41
1:A:126:TYR:HB3	1:A:145:SER:HB2	2.03	0.41
1:A:17:GLU:HB2	3:B:1231:PE4:H31	2.01	0.41
1:A:224:ASN:CG	2:Q:344:ALA:HB1	2.42	0.40
1:B:196:PHE:CE1	1:B:200:ILE:HG13	2.57	0.40
1:B:183:ASN:C	1:B:185:PRO:HD3	2.41	0.40
1:B:226:THR:HG21	5:B:2041:HOH:O	2.22	0.40

There are no symmetry-related clashes.

5.3 Torsion angles [i](#)

5.3.1 Protein backbone [i](#)

In the following table, the Percentiles column shows the percent Ramachandran outliers of the chain as a percentile score with respect to all X-ray entries followed by that with respect to entries of similar resolution.

The Analysed column shows the number of residues for which the backbone conformation was analysed, and the total number of residues.

Mol	Chain	Analysed	Favoured	Allowed	Outliers	Percentiles	
1	A	225/245 (92%)	217 (96%)	8 (4%)	0	100	100
1	B	227/245 (93%)	218 (96%)	9 (4%)	0	100	100
2	Q	4/10 (40%)	4 (100%)	0	0	100	100
2	R	4/10 (40%)	3 (75%)	1 (25%)	0	100	100
All	All	460/510 (90%)	442 (96%)	18 (4%)	0	100	100

There are no Ramachandran outliers to report.

5.3.2 Protein sidechains [i](#)

In the following table, the Percentiles column shows the percent sidechain outliers of the chain as a percentile score with respect to all X-ray entries followed by that with respect to entries of similar resolution.

The Analysed column shows the number of residues for which the sidechain conformation was analysed, and the total number of residues.

Mol	Chain	Analysed	Rotameric	Outliers	Percentiles	
1	A	174/209 (83%)	173 (99%)	1 (1%)	87	94
1	B	179/209 (86%)	178 (99%)	1 (1%)	87	94
2	Q	5/8 (62%)	5 (100%)	0	100	100
2	R	3/8 (38%)	3 (100%)	0	100	100
All	All	361/434 (83%)	359 (99%)	2 (1%)	87	94

All (2) residues with a non-rotameric sidechain are listed below:

Mol	Chain	Res	Type
1	A	174	PHE
1	B	174	PHE

Some sidechains can be flipped to improve hydrogen bonding and reduce clashes. There are no such sidechains identified.

5.3.3 RNA [i](#)

There are no RNA molecules in this entry.

5.4 Non-standard residues in protein, DNA, RNA chains [i](#)

2 non-standard protein/DNA/RNA residues are modelled in this entry.

In the following table, the Counts columns list the number of bonds (or angles) for which Mogul statistics could be retrieved, the number of bonds (or angles) that are observed in the model and the number of bonds (or angles) that are defined in the Chemical Component Dictionary. The Link column lists molecule types, if any, to which the group is linked. The Z score for a bond length (or angle) is the number of standard deviations the observed value is removed from the expected value. A bond length (or angle) with $|Z| > 2$ is considered an outlier worth inspection. RMSZ is the root-mean-square of all Z scores of the bond lengths (or angles).

Mol	Type	Chain	Res	Link	Bond lengths			Bond angles		
					Counts	RMSZ	# Z > 2	Counts	RMSZ	# Z > 2
2	SEP	Q	346	2	9,9,10	1.56	2 (22%)	9,12,14	1.30	2 (22%)
2	SEP	R	346	2	9,9,10	1.56	2 (22%)	9,12,14	1.71	2 (22%)

In the following table, the Chirals column lists the number of chiral outliers, the number of chiral centers analysed, the number of these observed in the model and the number defined in the Chemical Component Dictionary. Similar counts are reported in the Torsion and Rings columns. '-' means no outliers of that kind were identified.

Mol	Type	Chain	Res	Link	Chirals	Torsions	Rings
2	SEP	Q	346	2	-	0/5/8/10	0/0/0/0
2	SEP	R	346	2	-	0/5/8/10	0/0/0/0

All (4) bond length outliers are listed below:

Mol	Chain	Res	Type	Atoms	Z	Observed(Å)	Ideal(Å)
2	Q	346	SEP	CA-C	2.03	1.52	1.50
2	R	346	SEP	CA-C	2.09	1.53	1.50
2	Q	346	SEP	P-O1P	3.23	1.61	1.50

Continued on next page...

Continued from previous page...

Mol	Chain	Res	Type	Atoms	Z	Observed(Å)	Ideal(Å)
2	R	346	SEP	P-O1P	3.24	1.61	1.50

All (4) bond angle outliers are listed below:

Mol	Chain	Res	Type	Atoms	Z	Observed(°)	Ideal(°)
2	R	346	SEP	P-OG-CB	-3.11	109.73	118.30
2	Q	346	SEP	P-OG-CB	-2.25	112.09	118.30
2	Q	346	SEP	OG-CB-CA	2.02	110.15	108.17
2	R	346	SEP	OG-CB-CA	3.25	111.37	108.17

There are no chirality outliers.

There are no torsion outliers.

There are no ring outliers.

1 monomer is involved in 1 short contact:

Mol	Chain	Res	Type	Clashes	Symm-Clashes
2	R	346	SEP	1	0

5.5 Carbohydrates [i](#)

There are no carbohydrates in this entry.

5.6 Ligand geometry [i](#)

5 ligands are modelled in this entry.

In the following table, the Counts columns list the number of bonds (or angles) for which Mogul statistics could be retrieved, the number of bonds (or angles) that are observed in the model and the number of bonds (or angles) that are defined in the Chemical Component Dictionary. The Link column lists molecule types, if any, to which the group is linked. The Z score for a bond length (or angle) is the number of standard deviations the observed value is removed from the expected value. A bond length (or angle) with $|Z| > 2$ is considered an outlier worth inspection. RMSZ is the root-mean-square of all Z scores of the bond lengths (or angles).

Mol	Type	Chain	Res	Link	Bond lengths			Bond angles		
					Counts	RMSZ	# Z > 2	Counts	RMSZ	# Z > 2
3	PE4	A	1232	-	9,9,23	0.45	0	8,8,22	0.23	0
3	PE4	B	1231	-	13,13,23	2.46	1 (7%)	12,12,22	0.36	0
3	PE4	B	1232	-	3,3,23	0.44	0	2,2,22	0.33	0
4	FAR	Q	348	2	9,9,14	0.37	0	10,10,16	1.86	4 (40%)

Mol	Type	Chain	Res	Link	Bond lengths			Bond angles		
					Counts	RMSZ	# Z > 2	Counts	RMSZ	# Z > 2
4	FAR	R	348	2	9,9,14	0.35	0	10,10,16	1.96	4 (40%)

In the following table, the Chirals column lists the number of chiral outliers, the number of chiral centers analysed, the number of these observed in the model and the number defined in the Chemical Component Dictionary. Similar counts are reported in the Torsion and Rings columns. '-' means no outliers of that kind were identified.

Mol	Type	Chain	Res	Link	Chirals	Torsions	Rings
3	PE4	A	1232	-	-	0/7/7/21	0/0/0/0
3	PE4	B	1231	-	-	0/11/11/21	0/0/0/0
3	PE4	B	1232	-	-	0/1/1/21	0/0/0/0
4	FAR	Q	348	2	-	0/8/8/14	0/0/0/0
4	FAR	R	348	2	-	0/8/8/14	0/0/0/0

All (1) bond length outliers are listed below:

Mol	Chain	Res	Type	Atoms	Z	Observed(Å)	Ideal(Å)
3	B	1231	PE4	O5-C9	-8.69	0.97	1.42

All (8) bond angle outliers are listed below:

Mol	Chain	Res	Type	Atoms	Z	Observed(°)	Ideal(°)
4	Q	348	FAR	C1-C2-C3	-2.71	120.39	126.65
4	R	348	FAR	C1-C2-C3	-2.65	120.55	126.65
4	Q	348	FAR	C6-C7-C8	-2.48	119.23	127.84
4	R	348	FAR	C6-C7-C8	-2.43	119.40	127.84
4	Q	348	FAR	C10-C8-C9	2.47	120.17	114.59
4	R	348	FAR	C10-C8-C9	2.54	120.32	114.59
4	Q	348	FAR	C4-C3-C5	2.59	119.75	115.29
4	R	348	FAR	C4-C3-C5	3.11	120.65	115.29

There are no chirality outliers.

There are no torsion outliers.

There are no ring outliers.

3 monomers are involved in 10 short contacts:

Mol	Chain	Res	Type	Clashes	Symm-Clashes
3	B	1231	PE4	8	0
4	Q	348	FAR	1	0
4	R	348	FAR	1	0

5.7 Other polymers [i](#)

There are no such residues in this entry.

5.8 Polymer linkage issues [i](#)

There are no chain breaks in this entry.

6 Fit of model and data

6.1 Protein, DNA and RNA chains

In the following table, the column labelled ‘#RSRZ> 2’ contains the number (and percentage) of RSRZ outliers, followed by percent RSRZ outliers for the chain as percentile scores relative to all X-ray entries and entries of similar resolution. The OWAB column contains the minimum, median, 95th percentile and maximum values of the occupancy-weighted average B-factor per residue. The column labelled ‘Q< 0.9’ lists the number of (and percentage) of residues with an average occupancy less than 0.9.

Mol	Chain	Analysed	<RSRZ>	#RSRZ>2	OWAB(Å ²)	Q<0.9
1	A	228/245 (93%)	0.86	31 (13%) 3 4	44, 70, 105, 119	0
1	B	229/245 (93%)	0.67	9 (3%) 39 46	41, 63, 90, 112	0
2	Q	6/10 (60%)	2.20	3 (50%) 0 0	64, 80, 99, 125	0
2	R	6/10 (60%)	1.56	3 (50%) 0 0	55, 74, 111, 115	0
All	All	469/510 (91%)	0.80	46 (9%) 7 10	41, 66, 99, 125	0

All (46) RSRZ outliers are listed below:

Mol	Chain	Res	Type	RSRZ
1	B	230	SER	9.4
1	A	230	SER	5.2
1	A	63	SER	5.1
2	Q	347	CYS	4.9
2	Q	342	ASP	4.9
1	A	205	THR	4.8
1	A	229	THR	4.5
1	A	136	ASP	4.0
2	R	347	CYS	3.9
1	A	1	MET	3.8
1	A	211	TYR	3.8
1	A	78	MET	3.6
2	R	341	LYS	3.5
1	A	231	ASP	3.5
1	A	67	GLN	3.3
1	A	133	ALA	3.2
1	A	208	GLU	3.1
1	A	207	SER	3.1
1	B	134	ALA	3.1
1	B	2	ASP	3.0
2	R	342	ASP	3.0

Continued on next page...

Continued from previous page...

Mol	Chain	Res	Type	RSRZ
1	A	65	ILE	3.0
1	B	170	LEU	2.9
1	A	134	ALA	2.9
1	A	163	THR	2.9
1	A	204	ASP	2.7
1	B	186	GLU	2.8
1	A	227	LEU	2.7
2	Q	341	LYS	2.7
1	A	59	TRP	2.5
1	A	110	SER	2.5
1	B	119	LEU	2.5
1	A	33	GLY	2.4
1	A	179	TYR	2.4
1	A	201	ALA	2.4
1	A	206	LEU	2.3
1	B	228	TRP	2.3
1	A	69	THR	2.3
1	A	45	SER	2.3
1	B	12	LEU	2.2
1	A	209	GLU	2.2
1	A	132	VAL	2.2
1	A	19	TYR	2.1
1	B	125	TYR	2.1
1	A	125	TYR	2.0
1	A	121	MET	2.0

6.2 Non-standard residues in protein, DNA, RNA chains [i](#)

In the following table, the Atoms column lists the number of modelled atoms in the group and the number defined in the chemical component dictionary. The B-factors column lists the minimum, median, 95th percentile and maximum values of B factors of atoms in the group. The column labelled 'Q< 0.9' lists the number of atoms with occupancy less than 0.9.

Mol	Type	Chain	Res	Atoms	RSCC	RSR	B-factors(Å ²)	Q<0.9
2	SEP	R	346	10/11	0.97	0.20	39,44,66,76	0
2	SEP	Q	346	10/11	0.98	0.19	50,57,67,67	0

6.3 Carbohydrates [i](#)

There are no carbohydrates in this entry.

6.4 Ligands [i](#)

In the following table, the Atoms column lists the number of modelled atoms in the group and the number defined in the chemical component dictionary. The B-factors column lists the minimum, median, 95th percentile and maximum values of B factors of atoms in the group. The column labelled 'Q< 0.9' lists the number of atoms with occupancy less than 0.9.

Mol	Type	Chain	Res	Atoms	RSCC	RSR	B-factors(Å ²)	Q<0.9
4	FAR	R	348	10/15	0.29	0.68	76,114,119,122	0
3	PE4	B	1231	14/24	0.52	0.66	71,102,134,134	0
3	PE4	A	1232	10/24	0.56	0.45	73,110,138,146	0
4	FAR	Q	348	10/15	0.57	0.52	91,109,116,122	0
3	PE4	B	1232	4/24	0.60	0.28	45,54,63,63	0

6.5 Other polymers [i](#)

There are no such residues in this entry.