



# Full wwPDB X-ray Structure Validation Report ⓘ

Oct 28, 2024 – 06:25 PM EDT

PDB ID : 9BGH  
Title : Crystal structure of KRAS G12D in a transition state mimetic complex with CypA and RMC-7977  
Authors : Pourfarjam, Y.; Goldgur, Y.; Cuevas-Navarro, A.; Lito, P.  
Deposited on : 2024-04-18  
Resolution : 1.65 Å (reported)

This is a Full wwPDB X-ray Structure Validation Report for a publicly released PDB entry.

We welcome your comments at [validation@mail.wwpdb.org](mailto:validation@mail.wwpdb.org)

A user guide is available at

<https://www.wwpdb.org/validation/2017/XrayValidationReportHelp>

with specific help available everywhere you see the ⓘ symbol.

The types of validation reports are described at

<http://www.wwpdb.org/validation/2017/FAQs#types>.

---

The following versions of software and data (see [references ⓘ](#)) were used in the production of this report:

MolProbity : 4.02b-467  
Mogul : 2022.3.0, CSD as543be (2022)  
Xtriage (Phenix) : 1.20.1  
EDS : 3.0  
buster-report : 1.1.7 (2018)  
Percentile statistics : 20231227.v01 (using entries in the PDB archive December 27th 2023)  
CCP4 : 9.0.003 (Gargrove)  
Density-Fitness : 1.0.11  
Ideal geometry (proteins) : Engh & Huber (2001)  
Ideal geometry (DNA, RNA) : Parkinson et al. (1996)  
Validation Pipeline (wwPDB-VP) : 2.39

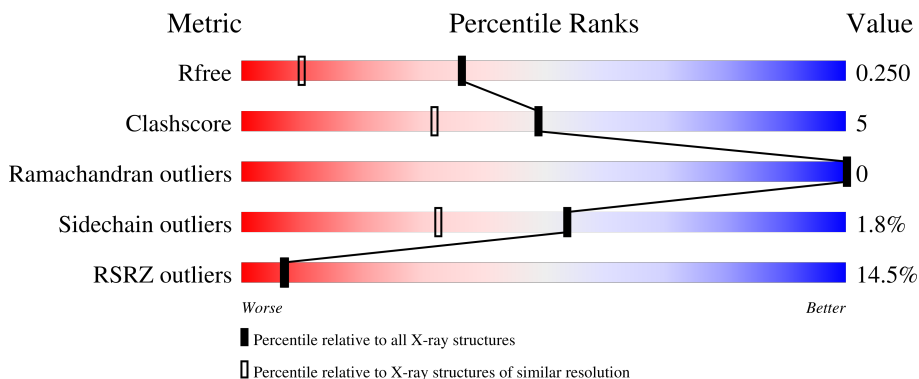
# 1 Overall quality at a glance

The following experimental techniques were used to determine the structure:

*X-RAY DIFFRACTION*

The reported resolution of this entry is 1.65 Å.

Percentile scores (ranging between 0-100) for global validation metrics of the entry are shown in the following graphic. The table shows the number of entries on which the scores are based.



Metric	Whole archive (#Entries)	Similar resolution (#Entries, resolution range(Å))
$R_{free}$	164625	2328 (1.66-1.66)
Clashscore	180529	2515 (1.66-1.66)
Ramachandran outliers	177936	2475 (1.66-1.66)
Sidechain outliers	177891	2475 (1.66-1.66)
RSRZ outliers	164620	2328 (1.66-1.66)

The table below summarises the geometric issues observed across the polymeric chains and their fit to the electron density. The red, orange, yellow and green segments of the lower bar indicate the fraction of residues that contain outliers for  $\geq 3$ , 2, 1 and 0 types of geometric quality criteria respectively. A grey segment represents the fraction of residues that are not modelled. The numeric value for each fraction is indicated below the corresponding segment, with a dot representing fractions  $\leq 5\%$ . The upper red bar (where present) indicates the fraction of residues that have poor fit to the electron density. The numeric value is given above the bar.

Mol	Chain	Length	Quality of chain
1	B	166	 90% 8%
1	D	166	 92% 5%
2	A	170	 92% 6%
2	C	170	 73% 25%

The following table lists non-polymeric compounds, carbohydrate monomers and non-standard

residues in protein, DNA, RNA chains that are outliers for geometric or electron-density-fit criteria:

Mol	Type	Chain	Res	Chirality	Geometry	Clashes	Electron density
3	ZNI	B	201	X	-	-	-
3	ZNI	D	201	X	-	-	-
6	AF3	C	203	-	-	X	-

## 2 Entry composition i

There are 7 unique types of molecules in this entry. The entry contains 5837 atoms, of which 0 are hydrogens and 0 are deuteriums.

In the tables below, the ZeroOcc column contains the number of atoms modelled with zero occupancy, the AltConf column contains the number of residues with at least one atom in alternate conformation and the Trace column contains the number of residues modelled with at most 2 atoms.

- Molecule 1 is a protein called Peptidyl-prolyl cis-trans isomerase A.

Mol	Chain	Residues	Atoms					ZeroOcc	AltConf	Trace
			Total	C	N	O	S			
1	B	163	1248	792	216	232	8	0	0	0
1	D	163	1248	792	216	232	8	0	0	0

There are 2 discrepancies between the modelled and reference sequences:

Chain	Residue	Modelled	Actual	Comment	Reference
B	0	GLY	-	expression tag	UNP P62938
D	0	GLY	-	expression tag	UNP P62938

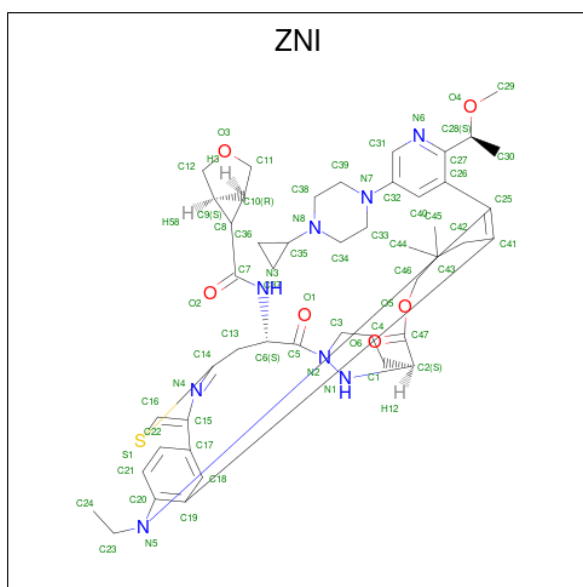
- Molecule 2 is a protein called GTPase KRas.

Mol	Chain	Residues	Atoms					ZeroOcc	AltConf	Trace
			Total	C	N	O	S			
2	A	169	1349	843	231	268	7	0	0	0
2	C	168	1321	826	223	265	7	0	0	0

There are 4 discrepancies between the modelled and reference sequences:

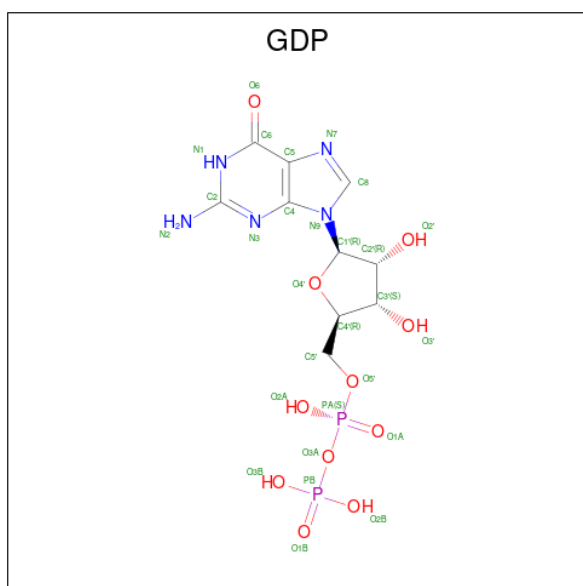
Chain	Residue	Modelled	Actual	Comment	Reference
A	0	GLY	-	expression tag	UNP P79800
A	12	ASP	GLY	engineered mutation	UNP P79800
C	0	GLY	-	expression tag	UNP P79800
C	12	ASP	GLY	engineered mutation	UNP P79800

- Molecule 3 is (1R,5S,6r)-N-[(1P,7S,9S,13S,20M)-20-{5-(4-cyclopropylpiperazin-1-yl)-2-[(1S)-1-methoxyethyl]pyridin-3-yl}-21-ethyl-17,17-dimethyl-8,14-dioxo-15-oxa-4-thia-9,21,27,28-tetraazapentacyclo[17.5.2.1 2,5 .1 9,13 .0 22,26 ]octacos-1(24),2,5(28),19,22,25-hexaen-7-yl]-3-oxabicyclo[3.1.0]hexane-6-carboxamide (three-letter code: ZNI) (formula: C<sub>47</sub>H<sub>60</sub>N<sub>8</sub>O<sub>6</sub>S) (labeled as "Ligand of Interest" by depositor).



Mol	Chain	Residues	Atoms					ZeroOcc	AltConf
			Total	C	N	O	S		
3	B	1	Total	C	N	O	S	0	0
			62	47	8	6	1		
3	D	1	Total	C	N	O	S	0	0
			62	47	8	6	1		

- Molecule 4 is GUANOSINE-5'-DIPHOSPHATE (three-letter code: GDP) (formula:  $C_{10}H_{15}N_5O_{11}P_2$ ).



Mol	Chain	Residues	Atoms					ZeroOcc	AltConf
			Total	C	N	O	P		
4	A	1	Total	C	N	O	P	0	0
			28	10	5	11	2		

*Continued on next page...*

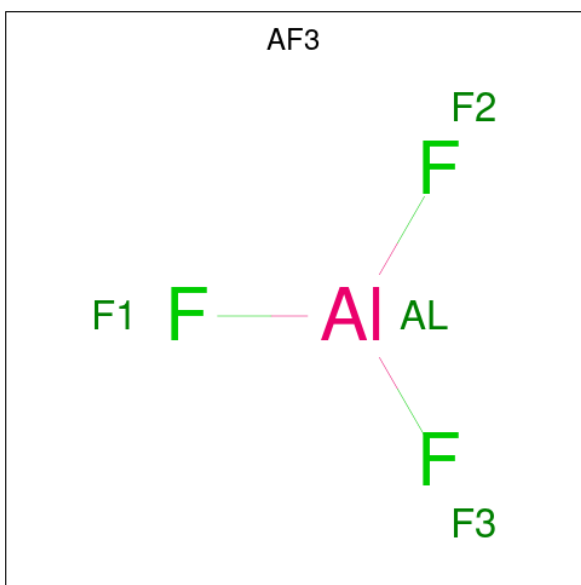
Continued from previous page...

Mol	Chain	Residues	Atoms					ZeroOcc	AltConf
			Total	C	N	O	P		
4	C	1	28	10	5	11	2	0	0

- Molecule 5 is MAGNESIUM ION (three-letter code: MG) (formula: Mg).

Mol	Chain	Residues	Atoms		ZeroOcc	AltConf
			Total	Mg		
5	A	1	1	1	0	0
5	C	1	1	1	0	0

- Molecule 6 is ALUMINUM FLUORIDE (three-letter code: AF3) (formula: AlF<sub>3</sub>).



Mol	Chain	Residues	Atoms			ZeroOcc	AltConf
			Total	Al	F		
6	C	1	4	1	3	0	0

- Molecule 7 is water.

Mol	Chain	Residues	Atoms		ZeroOcc	AltConf
			Total	O		
7	B	160	160	160	0	0
7	D	118	118	118	0	0
7	A	123	123	123	0	0

Continued on next page...

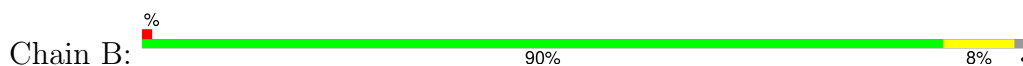
*Continued from previous page...*

<b>Mol</b>	<b>Chain</b>	<b>Residues</b>	<b>Atoms</b>		<b>ZeroOcc</b>	<b>AltConf</b>
7	C	84	Total	O	0	0
			84	84		

### 3 Residue-property plots [i](#)

These plots are drawn for all protein, RNA, DNA and oligosaccharide chains in the entry. The first graphic for a chain summarises the proportions of the various outlier classes displayed in the second graphic. The second graphic shows the sequence view annotated by issues in geometry and electron density. Residues are color-coded according to the number of geometric quality criteria for which they contain at least one outlier: green = 0, yellow = 1, orange = 2 and red = 3 or more. A red dot above a residue indicates a poor fit to the electron density ( $RSRZ > 2$ ). Stretches of 2 or more consecutive residues without any outlier are shown as a green connector. Residues present in the sample, but not in the model, are shown in grey.

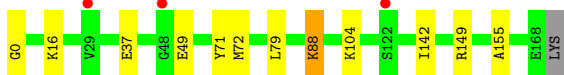
- Molecule 1: Peptidyl-prolyl cis-trans isomerase A



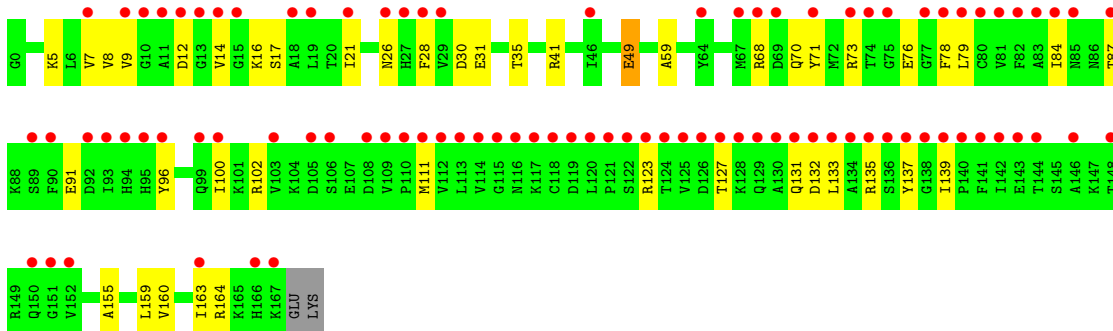
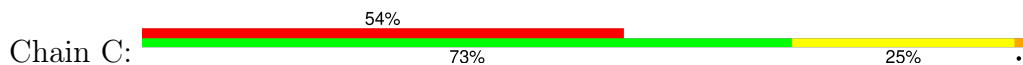
- Molecule 1: Peptidyl-prolyl cis-trans isomerase A



- Molecule 2: GTPase KRas



- Molecule 2: GTPase KRas





## 4 Data and refinement statistics

Property	Value	Source
Space group	P 21 21 21	Depositor
Cell constants a, b, c, $\alpha$ , $\beta$ , $\gamma$	65.48Å 81.79Å 127.83Å 90.00° 90.00° 90.00°	Depositor
Resolution (Å)	33.48 – 1.65 33.48 – 1.65	Depositor EDS
% Data completeness (in resolution range)	93.0 (33.48-1.65) 92.9 (33.48-1.65)	Depositor EDS
$R_{merge}$	(Not available)	Depositor
$R_{sym}$	(Not available)	Depositor
$\langle I/\sigma(I) \rangle$ <sup>1</sup>	1.17 (at 1.65Å)	Xtrriage
Refinement program	PHENIX (1.20.1_4487: ???)	Depositor
R, $R_{free}$	0.218 , 0.251 0.217 , 0.250	Depositor DCC
$R_{free}$ test set	4221 reflections (5.08%)	wwPDB-VP
Wilson B-factor (Å <sup>2</sup> )	25.2	Xtrriage
Anisotropy	0.227	Xtrriage
Bulk solvent $k_{sol}$ (e/Å <sup>3</sup> ), $B_{sol}$ (Å <sup>2</sup> )	0.35 , 37.2	EDS
L-test for twinning <sup>2</sup>	$\langle  L  \rangle = 0.51$ , $\langle L^2 \rangle = 0.35$	Xtrriage
Estimated twinning fraction	No twinning to report.	Xtrriage
$F_o, F_c$ correlation	0.96	EDS
Total number of atoms	5837	wwPDB-VP
Average B, all atoms (Å <sup>2</sup> )	36.0	wwPDB-VP

Xtrriage's analysis on translational NCS is as follows: *The largest off-origin peak in the Patterson function is 5.36% of the height of the origin peak. No significant pseudotranslation is detected.*

<sup>1</sup>Intensities estimated from amplitudes.

<sup>2</sup>Theoretical values of  $\langle |L| \rangle$ ,  $\langle L^2 \rangle$  for acentric reflections are 0.5, 0.333 respectively for untwinned datasets, and 0.375, 0.2 for perfectly twinned datasets.

## 5 Model quality [i](#)

### 5.1 Standard geometry [i](#)

Bond lengths and bond angles in the following residue types are not validated in this section: MG, AF3, GDP, ZNI

The Z score for a bond length (or angle) is the number of standard deviations the observed value is removed from the expected value. A bond length (or angle) with  $|Z| > 5$  is considered an outlier worth inspection. RMSZ is the root-mean-square of all Z scores of the bond lengths (or angles).

Mol	Chain	Bond lengths		Bond angles	
		RMSZ	# Z  >5	RMSZ	# Z  >5
1	B	0.84	0/1276	0.83	0/1711
1	D	0.71	0/1276	0.81	1/1711 (0.1%)
2	A	0.71	0/1370	0.85	1/1848 (0.1%)
2	C	0.60	0/1341	0.77	1/1813 (0.1%)
All	All	0.72	0/5263	0.82	3/7083 (0.0%)

Chiral center outliers are detected by calculating the chiral volume of a chiral center and verifying if the center is modelled as a planar moiety or with the opposite hand. A planarity outlier is detected by checking planarity of atoms in a peptide group, atoms in a mainchain group or atoms of a sidechain that are expected to be planar.

Mol	Chain	#Chirality outliers	#Planarity outliers
2	A	0	1

There are no bond length outliers.

All (3) bond angle outliers are listed below:

Mol	Chain	Res	Type	Atoms	Z	Observed( $^{\circ}$ )	Ideal( $^{\circ}$ )
1	D	61	MET	CG-SD-CE	-8.57	86.49	100.20
2	A	79	LEU	CB-CG-CD2	5.09	119.66	111.00
2	C	30	ASP	CB-CG-OD1	5.01	122.81	118.30

There are no chirality outliers.

All (1) planarity outliers are listed below:

Mol	Chain	Res	Type	Group
2	A	149	ARG	Sidechain

## 5.2 Too-close contacts [i](#)

In the following table, the Non-H and H(model) columns list the number of non-hydrogen atoms and hydrogen atoms in the chain respectively. The H(added) column lists the number of hydrogen atoms added and optimized by MolProbity. The Clashes column lists the number of clashes within the asymmetric unit, whereas Symm-Clashes lists symmetry-related clashes.

Mol	Chain	Non-H	H(model)	H(added)	Clashes	Symm-Clashes
1	B	1248	0	1219	10	0
1	D	1248	0	1219	5	0
2	A	1349	0	1323	6	0
2	C	1321	0	1279	33	0
3	B	62	0	0	0	0
3	D	62	0	0	0	0
4	A	28	0	12	0	0
4	C	28	0	12	1	0
5	A	1	0	0	0	0
5	C	1	0	0	0	0
6	C	4	0	0	8	0
7	A	123	0	0	3	0
7	B	160	0	0	3	1
7	C	84	0	0	9	1
7	D	118	0	0	1	2
All	All	5837	0	5064	55	2

The all-atom clashscore is defined as the number of clashes found per 1000 atoms (including hydrogen atoms). The all-atom clashscore for this structure is 5.

All (55) close contacts within the same asymmetric unit are listed below, sorted by their clash magnitude.

Atom-1	Atom-2	Interatomic distance (Å)	Clash overlap (Å)
2:C:12:ASP:HA	6:C:203:AF3:F2	1.32	1.16
2:C:41:ARG:NE	7:C:301:HOH:O	1.95	0.92
1:B:144:ARG:NH1	7:B:301:HOH:O	2.07	0.86
2:C:84:ILE:HD13	2:C:123:ARG:HG2	1.59	0.85
2:C:49:GLU:OE2	2:C:164:ARG:NH2	2.15	0.79
1:B:25:PHE:HZ	1:B:131:LYS:HG2	1.48	0.78
2:C:12:ASP:OD1	6:C:203:AF3:F2	1.91	0.78
6:C:203:AF3:F3	7:C:320:HOH:O	1.97	0.70
2:C:160:VAL:HA	2:C:163:ILE:HD12	1.75	0.69
2:A:37:GLU:OE2	7:A:301:HOH:O	2.10	0.68
1:B:25:PHE:CZ	1:B:131:LYS:HG2	2.28	0.67
2:C:76:GLU:OE2	7:C:303:HOH:O	2.13	0.66

*Continued on next page...*

*Continued from previous page...*

Atom-1	Atom-2	Interatomic distance (Å)	Clash overlap (Å)
2:C:16:LYS:HG3	6:C:203:AF3:F1	1.87	0.64
2:C:5:LYS:NZ	7:C:302:HOH:O	2.13	0.63
2:C:12:ASP:CA	6:C:203:AF3:F2	2.23	0.59
2:C:17:SER:O	2:C:21:ILE:HG13	2.04	0.57
1:B:58:PRO:O	7:C:301:HOH:O	2.18	0.57
2:C:16:LYS:NZ	7:C:307:HOH:O	2.36	0.57
2:C:96:TYR:HD2	7:C:313:HOH:O	1.88	0.56
2:A:142:ILE:HD12	2:A:155:ALA:HA	1.88	0.56
2:C:68:ARG:HA	2:C:71:TYR:CE2	2.43	0.53
1:B:28:LYS:HE3	1:B:89:ILE:HG21	1.91	0.53
2:C:127:THR:O	2:C:131:GLN:HG3	2.09	0.53
2:C:87:THR:O	2:C:91:GLU:HG3	2.09	0.53
1:B:151:LYS:HE3	7:A:329:HOH:O	2.08	0.52
4:C:201:GDP:O1B	6:C:203:AF3:F3	2.17	0.52
2:C:7:VAL:O	2:C:78:PHE:HA	2.11	0.51
1:D:84:GLU:H	1:D:84:GLU:CD	2.14	0.50
2:C:8:VAL:HG12	2:C:16:LYS:HD2	1.94	0.49
1:B:15:GLU:OE2	7:B:302:HOH:O	2.19	0.48
2:C:70:GLN:HA	2:C:73:ARG:HD2	1.95	0.48
2:C:102:ARG:NH1	2:C:102:ARG:HG2	2.30	0.46
2:C:16:LYS:HB2	6:C:203:AF3:F3	2.06	0.46
2:C:133:LEU:HD11	2:C:137:TYR:OH	2.16	0.45
1:D:134:GLU:HG3	7:D:328:HOH:O	2.14	0.45
2:C:79:LEU:HD11	2:C:155:ALA:HB1	1.99	0.45
2:A:88:LYS:HD2	2:A:88:LYS:O	2.17	0.44
2:C:9:VAL:HA	2:C:16:LYS:HZ2	1.81	0.44
1:D:155:LYS:HE2	1:D:157:THR:HG21	2.00	0.44
2:C:35:THR:O	2:C:59:ALA:HB2	2.17	0.44
2:C:41:ARG:CZ	7:C:301:HOH:O	2.54	0.44
2:C:132:ASP:OD1	2:C:135:ARG:NH2	2.51	0.44
2:C:111:MET:HG2	2:C:139:ILE:HD13	1.99	0.43
2:C:14:VAL:HG22	6:C:203:AF3:F1	2.09	0.43
1:B:138:ILE:O	1:B:142:MET:HG3	2.19	0.42
1:D:81:GLU:HG2	1:D:82:LYS:HG3	2.01	0.42
2:C:159:LEU:O	2:C:163:ILE:HG13	2.19	0.42
2:A:72:MET:O	2:A:104:LYS:HE2	2.20	0.41
1:B:133:LYS:HG3	7:B:309:HOH:O	2.19	0.41
2:C:28:PHE:HA	7:C:319:HOH:O	2.21	0.41
2:C:100:ILE:HG21	2:C:111:MET:HE3	2.03	0.41
2:A:16:LYS:HB2	2:A:16:LYS:HE2	1.86	0.41
1:B:28:LYS:HA	1:B:28:LYS:HD2	1.84	0.41

*Continued on next page...*

Continued from previous page...

Atom-1	Atom-2	Interatomic distance (Å)	Clash overlap (Å)
1:D:69:ARG:HD3	2:C:31:GLU:OE2	2.22	0.40
2:A:0:GLY:N	7:A:311:HOH:O	2.54	0.40

All (2) symmetry-related close contacts are listed below. The label for Atom-2 includes the symmetry operator and encoded unit-cell translations to be applied.

Atom-1	Atom-2	Interatomic distance (Å)	Clash overlap (Å)
7:B:381:HOH:O	7:D:397:HOH:O[4_455]	1.94	0.26
7:D:393:HOH:O	7:C:375:HOH:O[3_655]	2.12	0.08

## 5.3 Torsion angles [i](#)

### 5.3.1 Protein backbone [i](#)

In the following table, the Percentiles column shows the percent Ramachandran outliers of the chain as a percentile score with respect to all X-ray entries followed by that with respect to entries of similar resolution.

The Analysed column shows the number of residues for which the backbone conformation was analysed, and the total number of residues.

Mol	Chain	Analysed	Favoured	Allowed	Outliers	Percentiles	
1	B	161/166 (97%)	156 (97%)	5 (3%)	0	100	100
1	D	161/166 (97%)	155 (96%)	6 (4%)	0	100	100
2	A	167/170 (98%)	162 (97%)	5 (3%)	0	100	100
2	C	166/170 (98%)	162 (98%)	4 (2%)	0	100	100
All	All	655/672 (98%)	635 (97%)	20 (3%)	0	100	100

There are no Ramachandran outliers to report.

### 5.3.2 Protein sidechains [i](#)

In the following table, the Percentiles column shows the percent sidechain outliers of the chain as a percentile score with respect to all X-ray entries followed by that with respect to entries of similar resolution.

The Analysed column shows the number of residues for which the sidechain conformation was analysed, and the total number of residues.

Mol	Chain	Analysed	Rotameric	Outliers	Percentiles	
1	B	131/133 (98%)	129 (98%)	2 (2%)	60	41
1	D	131/133 (98%)	128 (98%)	3 (2%)	45	22
2	A	149/150 (99%)	146 (98%)	3 (2%)	50	28
2	C	144/150 (96%)	142 (99%)	2 (1%)	62	43
All	All	555/566 (98%)	545 (98%)	10 (2%)	54	32

All (10) residues with a non-rotameric sidechain are listed below:

Mol	Chain	Res	Type
1	B	29	VAL
1	B	61	MET
1	D	15	GLU
1	D	46	PHE
1	D	61	MET
2	A	49	GLU
2	A	71	TYR
2	A	88	LYS
2	C	26	ASN
2	C	49	GLU

Sometimes sidechains can be flipped to improve hydrogen bonding and reduce clashes. All (1) such sidechains are listed below:

Mol	Chain	Res	Type
2	A	129	GLN

### 5.3.3 RNA [i](#)

There are no RNA molecules in this entry.

## 5.4 Non-standard residues in protein, DNA, RNA chains [i](#)

There are no non-standard protein/DNA/RNA residues in this entry.

## 5.5 Carbohydrates [i](#)

There are no oligosaccharides in this entry.

## 5.6 Ligand geometry [i](#)

Of 7 ligands modelled in this entry, 2 are monoatomic - leaving 5 for Mogul analysis.

In the following table, the Counts columns list the number of bonds (or angles) for which Mogul statistics could be retrieved, the number of bonds (or angles) that are observed in the model and the number of bonds (or angles) that are defined in the Chemical Component Dictionary. The Link column lists molecule types, if any, to which the group is linked. The Z score for a bond length (or angle) is the number of standard deviations the observed value is removed from the expected value. A bond length (or angle) with  $|Z| > 2$  is considered an outlier worth inspection. RMSZ is the root-mean-square of all Z scores of the bond lengths (or angles).

Mol	Type	Chain	Res	Link	Bond lengths			Bond angles		
					Counts	RMSZ	# Z  > 2	Counts	RMSZ	# Z  > 2
6	AF3	C	203	-	0,3,3	-	-	-		
4	GDP	C	201	5	25,30,30	1.15	2 (8%)	30,47,47	1.16	2 (6%)
4	GDP	A	201	5	25,30,30	1.22	1 (4%)	30,47,47	1.39	5 (16%)
3	ZNI	B	201	-	63,71,71	2.03	14 (22%)	73,107,107	1.87	15 (20%)
3	ZNI	D	201	-	63,71,71	1.81	17 (26%)	73,107,107	2.33	20 (27%)

In the following table, the Chirals column lists the number of chiral outliers, the number of chiral centers analysed, the number of these observed in the model and the number defined in the Chemical Component Dictionary. Similar counts are reported in the Torsion and Rings columns. '-' means no outliers of that kind were identified.

Mol	Type	Chain	Res	Link	Chirals	Torsions	Rings
4	GDP	C	201	5	-	0/12/32/32	0/3/3/3
3	ZNI	B	201	-	1/1/14/16	6/55/96/96	0/8/10/10
4	GDP	A	201	5	-	1/12/32/32	0/3/3/3
3	ZNI	D	201	-	1/1/14/16	5/55/96/96	0/8/10/10

All (34) bond length outliers are listed below:

Mol	Chain	Res	Type	Atoms	Z	Observed(Å)	Ideal(Å)
3	B	201	ZNI	C42-C43	-7.98	1.52	1.55
3	D	201	ZNI	C13-C14	5.36	1.53	1.49
3	B	201	ZNI	C41-C19	4.72	1.48	1.41
3	D	201	ZNI	C41-C19	4.26	1.48	1.41
3	B	201	ZNI	C5-N2	4.10	1.41	1.35
4	A	201	GDP	O4'-C1'	3.82	1.45	1.40
3	D	201	ZNI	C42-C41	3.61	1.56	1.52
3	B	201	ZNI	C26-C25	-3.53	1.44	1.48
3	B	201	ZNI	C16-S1	3.42	1.76	1.70
3	B	201	ZNI	C17-C15	-3.31	1.43	1.49

*Continued on next page...*

Continued from previous page...

Mol	Chain	Res	Type	Atoms	Z	Observed(Å)	Ideal(Å)
3	B	201	ZNI	C42-C41	3.24	1.55	1.52
3	B	201	ZNI	C33-N7	3.17	1.52	1.46
3	D	201	ZNI	C40-C32	3.08	1.45	1.39
3	B	201	ZNI	N1-N2	-2.96	1.40	1.43
3	B	201	ZNI	C3-N2	-2.86	1.43	1.46
3	B	201	ZNI	C8-C7	-2.83	1.46	1.51
3	D	201	ZNI	C5-N2	2.78	1.39	1.35
3	D	201	ZNI	C33-N7	2.67	1.51	1.46
4	C	201	GDP	PA-O3A	2.66	1.62	1.59
3	D	201	ZNI	C30-C28	2.64	1.57	1.52
3	D	201	ZNI	C8-C7	-2.64	1.46	1.51
3	B	201	ZNI	C15-N4	2.63	1.45	1.37
3	D	201	ZNI	C17-C15	-2.52	1.45	1.49
3	D	201	ZNI	C3-N2	-2.47	1.43	1.46
3	D	201	ZNI	C40-C26	2.46	1.43	1.39
3	D	201	ZNI	C22-C17	2.46	1.44	1.39
3	D	201	ZNI	C15-N4	2.33	1.44	1.37
3	B	201	ZNI	C32-N7	2.11	1.44	1.38
3	D	201	ZNI	C39-N7	2.10	1.50	1.46
3	B	201	ZNI	C22-C17	2.09	1.43	1.39
3	D	201	ZNI	O5-C47	2.09	1.37	1.33
3	D	201	ZNI	C44-C43	2.06	1.57	1.53
4	C	201	GDP	C2-N3	2.01	1.38	1.33
3	D	201	ZNI	C16-S1	2.00	1.73	1.70

All (42) bond angle outliers are listed below:

Mol	Chain	Res	Type	Atoms	Z	Observed(°)	Ideal(°)
3	D	201	ZNI	C36-C35-N8	9.63	128.45	117.84
3	D	201	ZNI	C40-C32-C31	-8.37	112.32	119.67
3	B	201	ZNI	C36-C35-N8	7.29	125.88	117.84
3	B	201	ZNI	C40-C32-C31	-5.91	114.48	119.67
3	D	201	ZNI	C10-C8-C7	5.30	129.45	117.18
3	B	201	ZNI	O3-C11-C10	-5.00	99.36	106.27
3	D	201	ZNI	C37-C35-N8	-4.16	113.25	117.84
3	D	201	ZNI	O3-C11-C10	-3.82	101.00	106.27
3	D	201	ZNI	C13-C6-C5	-3.73	102.12	109.94
3	D	201	ZNI	C26-C40-C32	3.57	125.79	119.30
3	D	201	ZNI	C9-C8-C7	3.53	125.35	117.18
4	C	201	GDP	C8-N7-C5	3.50	108.52	102.55
3	B	201	ZNI	C39-C38-N8	3.47	116.72	110.61
3	B	201	ZNI	C24-C23-N5	-3.43	106.69	111.72

Continued on next page...



*Continued from previous page...*

Mol	Chain	Res	Type	Atoms	Z	Observed(°)	Ideal(°)
3	D	201	ZNI	C31-N6-C27	3.33	124.28	118.88
3	B	201	ZNI	O3-C12-C9	-3.33	101.67	106.27
3	B	201	ZNI	C31-C32-N7	3.28	126.78	121.80
4	A	201	GDP	C8-N7-C5	3.13	107.87	102.55
3	B	201	ZNI	C4-C3-N2	-3.08	104.10	110.54
3	D	201	ZNI	C31-C32-N7	2.92	126.23	121.80
3	D	201	ZNI	O3-C12-C9	-2.80	102.40	106.27
3	D	201	ZNI	C25-C26-C27	2.79	124.70	119.86
3	B	201	ZNI	C37-C35-N8	-2.79	114.77	117.84
3	D	201	ZNI	C38-N8-C35	2.71	119.69	112.79
3	D	201	ZNI	C8-C7-N3	2.70	120.94	114.82
3	D	201	ZNI	O2-C7-N3	-2.69	118.13	122.96
3	D	201	ZNI	C24-C23-N5	-2.67	107.81	111.72
3	D	201	ZNI	C18-C19-C20	-2.58	116.56	119.65
3	B	201	ZNI	C10-C8-C7	2.53	123.05	117.18
4	A	201	GDP	C5-C6-N1	2.52	118.89	114.07
3	D	201	ZNI	C34-N8-C35	-2.52	106.37	112.79
4	A	201	GDP	O3'-C3'-C2'	-2.47	103.91	111.82
4	A	201	GDP	O3'-C3'-C4'	-2.46	104.01	111.08
3	B	201	ZNI	C13-C6-C5	-2.46	104.78	109.94
3	B	201	ZNI	C26-C40-C32	2.43	123.71	119.30
3	B	201	ZNI	C40-C32-N7	-2.40	118.73	121.33
3	B	201	ZNI	C5-N2-N1	-2.38	116.05	119.42
3	D	201	ZNI	C14-C13-C6	-2.23	108.73	113.86
3	B	201	ZNI	C34-N8-C35	-2.15	107.31	112.79
3	D	201	ZNI	C4-C3-N2	-2.15	106.05	110.54
4	A	201	GDP	C4'-O4'-C1'	-2.14	107.97	109.92
4	C	201	GDP	C5-C6-N1	2.11	118.09	114.07

All (2) chirality outliers are listed below:

Mol	Chain	Res	Type	Atom
3	B	201	ZNI	N2
3	D	201	ZNI	N2

All (12) torsion outliers are listed below:

Mol	Chain	Res	Type	Atoms
3	B	201	ZNI	C14-C13-C6-N3
3	B	201	ZNI	C26-C27-C28-C30
3	B	201	ZNI	C26-C27-C28-O4
3	D	201	ZNI	C14-C13-C6-N3

*Continued on next page...*

*Continued from previous page...*

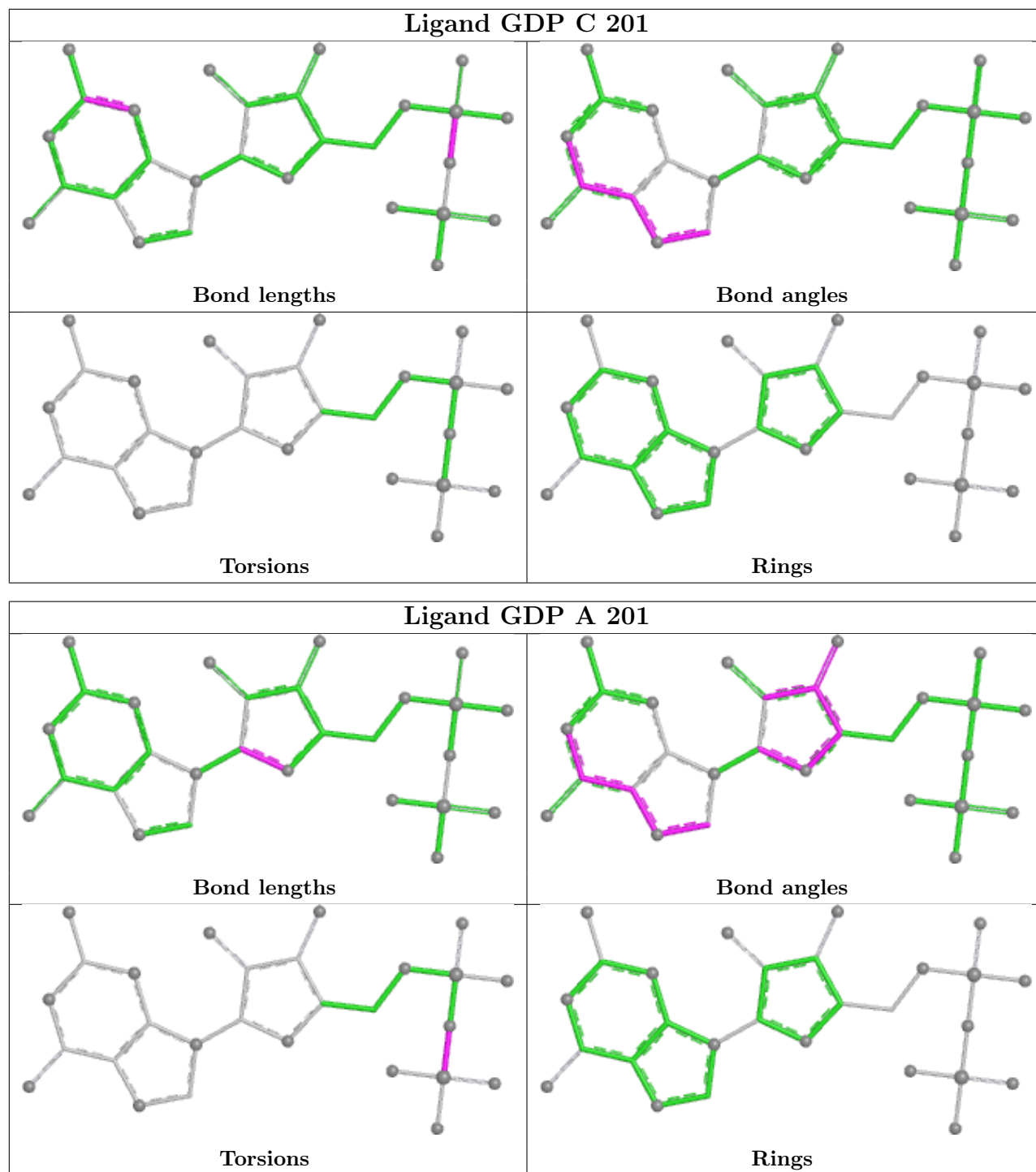
Mol	Chain	Res	Type	Atoms
3	D	201	ZNI	C26-C27-C28-C30
3	D	201	ZNI	C14-C13-C6-C5
3	B	201	ZNI	C14-C13-C6-C5
3	D	201	ZNI	C26-C27-C28-O4
3	B	201	ZNI	C27-C28-O4-C29
3	D	201	ZNI	C27-C28-O4-C29
3	B	201	ZNI	C31-C32-N7-C33
4	A	201	GDP	PA-O3A-PB-O2B

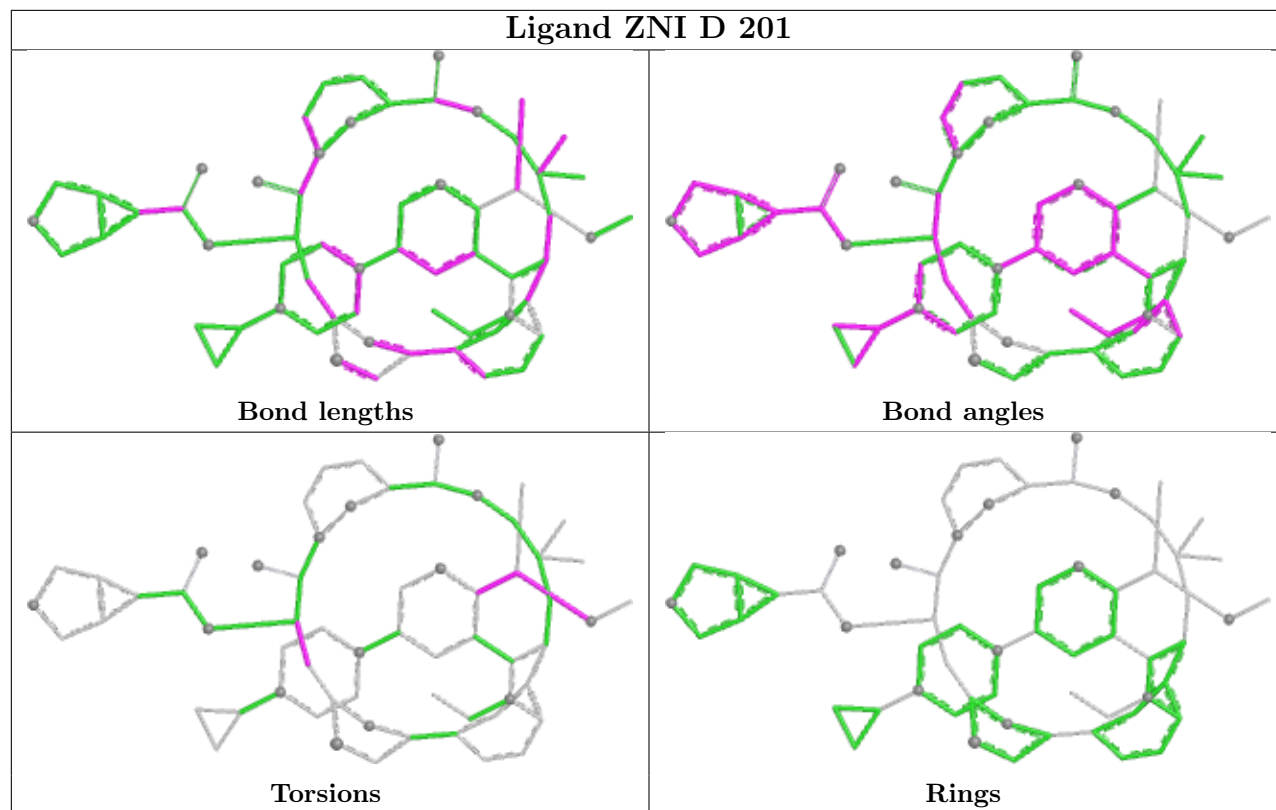
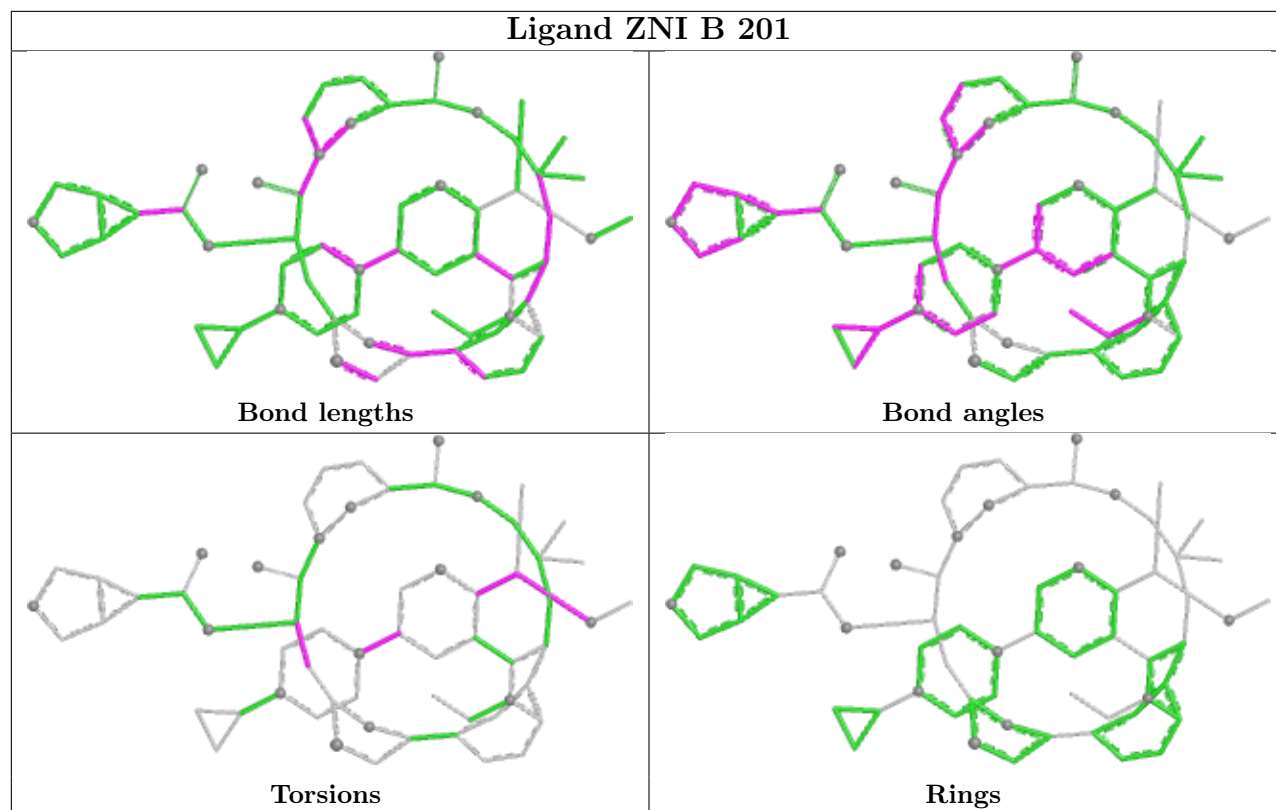
There are no ring outliers.

2 monomers are involved in 8 short contacts:

Mol	Chain	Res	Type	Clashes	Symm-Clashes
6	C	203	AF3	8	0
4	C	201	GDP	1	0

The following is a two-dimensional graphical depiction of Mogul quality analysis of bond lengths, bond angles, torsion angles, and ring geometry for all instances of the Ligand of Interest. In addition, ligands with molecular weight > 250 and outliers as shown on the validation Tables will also be included. For torsion angles, if less than 5% of the Mogul distribution of torsion angles is within 10 degrees of the torsion angle in question, then that torsion angle is considered an outlier. Any bond that is central to one or more torsion angles identified as an outlier by Mogul will be highlighted in the graph. For rings, the root-mean-square deviation (RMSD) between the ring in question and similar rings identified by Mogul is calculated over all ring torsion angles. If the average RMSD is greater than 60 degrees and the minimal RMSD between the ring in question and any Mogul-identified rings is also greater than 60 degrees, then that ring is considered an outlier. The outliers are highlighted in purple. The color gray indicates Mogul did not find sufficient equivalents in the CSD to analyse the geometry.





## 5.7 Other polymers [i](#)

There are no such residues in this entry.

## 5.8 Polymer linkage issues [i](#)

There are no chain breaks in this entry.

## 6 Fit of model and data

### 6.1 Protein, DNA and RNA chains

In the following table, the column labelled ‘#RSRZ > 2’ contains the number (and percentage) of RSRZ outliers, followed by percent RSRZ outliers for the chain as percentile scores relative to all X-ray entries and entries of similar resolution. The OWAB column contains the minimum, median, 95<sup>th</sup> percentile and maximum values of the occupancy-weighted average B-factor per residue. The column labelled ‘Q < 0.9’ lists the number of (and percentage) of residues with an average occupancy less than 0.9.

Mol	Chain	Analysed	<RSRZ>	#RSRZ>2	OWAB(Å <sup>2</sup> )	Q<0.9
1	B	163/166 (98%)	-0.25	1 (0%) 85 88	15, 25, 38, 59	0
1	D	163/166 (98%)	-0.02	1 (0%) 85 88	20, 31, 43, 60	0
2	A	169/170 (99%)	0.17	3 (1%) 67 71	17, 33, 52, 70	0
2	C	168/170 (98%)	2.31	91 (54%) 0 0	30, 53, 75, 86	0
All	All	663/672 (98%)	0.56	96 (14%) 7 7	15, 33, 67, 86	0

All (96) RSRZ outliers are listed below:

Mol	Chain	Res	Type	RSRZ
2	C	14	VAL	5.9
2	C	84	ILE	5.7
2	C	81	VAL	5.1
2	C	71	TYR	5.0
2	C	82	PHE	5.0
2	C	96	TYR	4.9
2	C	137	TYR	4.7
2	C	83	ALA	4.6
2	C	79	LEU	4.6
2	C	163	ILE	4.5
2	C	125	VAL	4.4
2	C	93	ILE	4.4
2	C	109	VAL	4.4
2	C	100	ILE	4.3
2	C	90	PHE	4.3
2	C	85	ASN	4.3
2	C	113	LEU	4.3
2	C	133	LEU	4.2
2	C	121	PRO	4.2
2	C	11	ALA	4.2
2	C	134	ALA	4.1

*Continued on next page...*

*Continued from previous page...*

<b>Mol</b>	<b>Chain</b>	<b>Res</b>	<b>Type</b>	<b>RSRZ</b>
2	C	120	LEU	4.1
2	C	139	ILE	3.9
2	C	130	ALA	3.9
2	C	112	VAL	3.8
2	C	118	CYS	3.7
2	A	29	VAL	3.7
2	C	142	ILE	3.7
2	C	67	MET	3.6
2	C	166	HIS	3.6
2	C	141	PHE	3.6
2	C	152	VAL	3.6
2	C	122	SER	3.5
2	C	114	VAL	3.5
2	C	146	ALA	3.5
2	C	74	THR	3.5
2	C	77	GLY	3.4
2	C	29	VAL	3.4
2	C	27	HIS	3.4
1	B	2	VAL	3.3
2	C	10	GLY	3.3
2	C	138	GLY	3.3
2	C	87	THR	3.2
2	C	78	PHE	3.2
2	C	68	ARG	3.2
2	C	148	THR	3.2
2	C	94	HIS	3.1
2	C	124	THR	3.1
2	C	119	ASP	3.1
2	C	75	GLY	3.0
2	C	127	THR	3.0
2	C	129	GLN	3.0
2	C	9	VAL	2.9
2	C	126	ASP	2.9
2	C	95	HIS	2.8
2	C	111	MET	2.8
2	C	151	GLY	2.8
2	C	69	ASP	2.8
2	C	26	ASN	2.8
2	C	80	CYS	2.8
2	C	73	ARG	2.8
2	C	28	PHE	2.7
2	C	132	ASP	2.7

*Continued on next page...*

*Continued from previous page...*

Mol	Chain	Res	Type	RSRZ
2	C	13	GLY	2.7
2	C	140	PRO	2.7
2	C	12	ASP	2.6
2	C	117	LYS	2.5
2	C	7	VAL	2.5
2	C	15	GLY	2.5
2	C	110	PRO	2.5
2	C	143	GLU	2.5
2	C	99	GLN	2.5
2	C	103	VAL	2.5
2	C	123	ARG	2.5
2	C	18	ALA	2.5
2	C	106	SER	2.4
2	C	19	LEU	2.4
2	C	128	LYS	2.4
2	C	64	TYR	2.4
2	C	115	GLY	2.4
2	C	105	ASP	2.4
2	C	144	THR	2.4
2	C	46	ILE	2.3
1	D	82	LYS	2.2
2	C	116	ASN	2.2
2	A	48	GLY	2.2
2	C	135	ARG	2.1
2	C	21	ILE	2.1
2	C	108	ASP	2.1
2	C	89	SER	2.1
2	C	136	SER	2.1
2	C	150	GLN	2.1
2	C	167	LYS	2.1
2	C	131	GLN	2.1
2	A	122	SER	2.1
2	C	92	ASP	2.0

## 6.2 Non-standard residues in protein, DNA, RNA chains [i](#)

There are no non-standard protein/DNA/RNA residues in this entry.

## 6.3 Carbohydrates [i](#)

There are no monosaccharides in this entry.

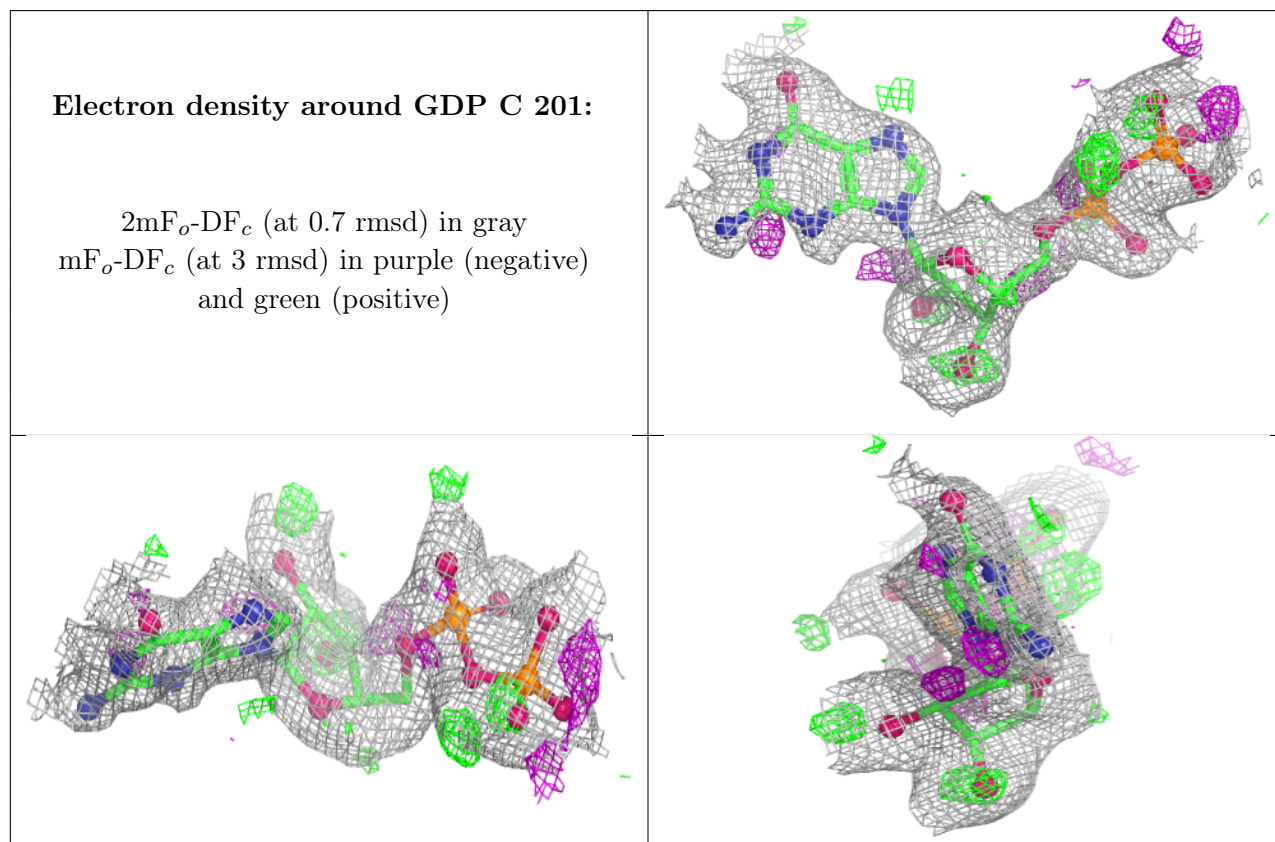


## 6.4 Ligands [i](#)

In the following table, the Atoms column lists the number of modelled atoms in the group and the number defined in the chemical component dictionary. The B-factors column lists the minimum, median, 95<sup>th</sup> percentile and maximum values of B factors of atoms in the group. The column labelled 'Q<0.9' lists the number of atoms with occupancy less than 0.9.

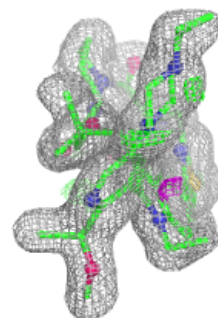
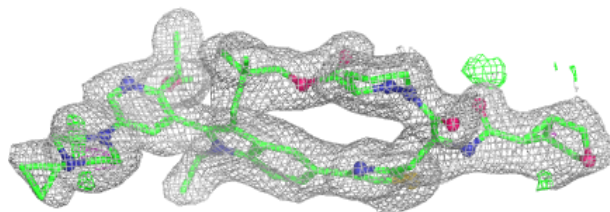
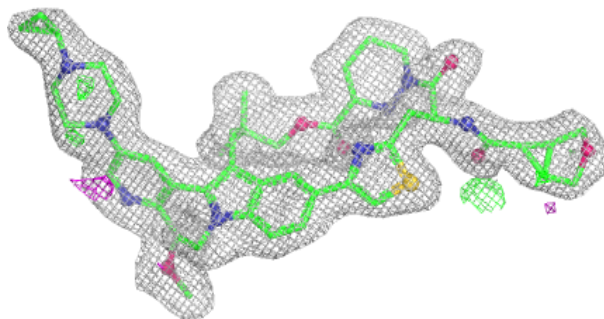
Mol	Type	Chain	Res	Atoms	RSCC	RSR	B-factors(Å <sup>2</sup> )	Q<0.9
4	GDP	C	201	28/28	0.88	0.13	42,49,55,58	0
6	AF3	C	203	4/4	0.92	0.10	43,45,48,55	0
3	ZNI	D	201	62/62	0.93	0.09	22,31,43,47	0
5	MG	C	202	1/1	0.95	0.06	39,39,39,39	0
3	ZNI	B	201	62/62	0.96	0.07	15,19,33,40	0
4	GDP	A	201	28/28	0.98	0.05	18,23,27,30	0
5	MG	A	202	1/1	0.99	0.05	16,16,16,16	0

The following is a graphical depiction of the model fit to experimental electron density of all instances of the Ligand of Interest. In addition, ligands with molecular weight > 250 and outliers as shown on the geometry validation Tables will also be included. Each fit is shown from different orientation to approximate a three-dimensional view.

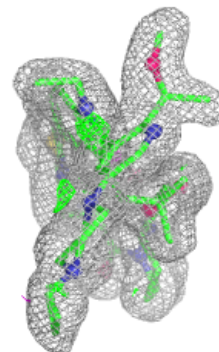
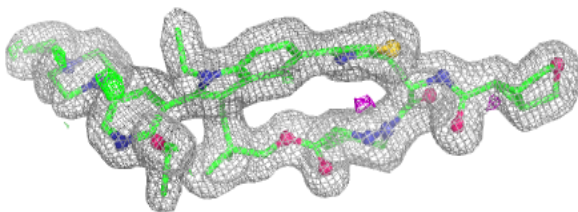
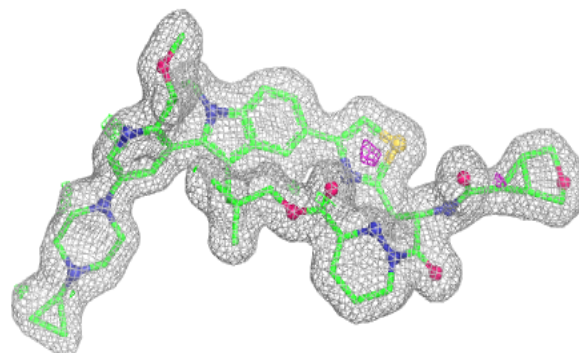


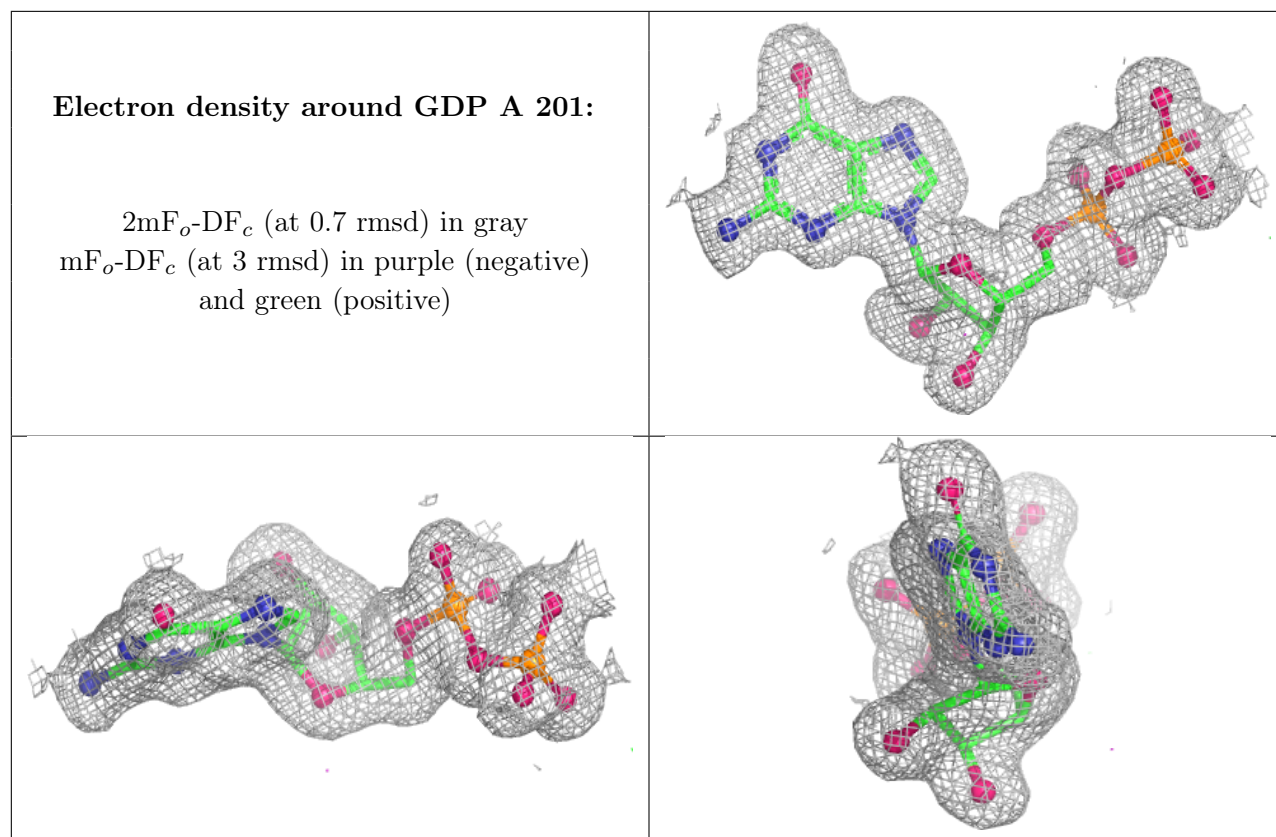
**Electron density around ZNI D 201:**

$2mF_o-DF_c$  (at 0.7 rmsd) in gray  
 $mF_o-DF_c$  (at 3 rmsd) in purple (negative)  
and green (positive)

**Electron density around ZNI B 201:**

$2mF_o-DF_c$  (at 0.7 rmsd) in gray  
 $mF_o-DF_c$  (at 3 rmsd) in purple (negative)  
and green (positive)





## 6.5 Other polymers [i](#)

There are no such residues in this entry.