



# Full wwPDB X-ray Structure Validation Report ⓘ

Nov 14, 2024 – 04:25 PM EST

PDB ID : 9BHZ  
Title : Structure of FbsH, an NRPS adenylation domain in the fimsbactin biosynthetic pathway bound to Salicyl-AMS  
Authors : Ahmed, S.F.; Gulick, A.M.  
Deposited on : 2024-04-22  
Resolution : 2.22 Å (reported)

This is a Full wwPDB X-ray Structure Validation Report for a publicly released PDB entry.

We welcome your comments at [validation@mail.wwpdb.org](mailto:validation@mail.wwpdb.org)

A user guide is available at

<https://www.wwpdb.org/validation/2017/XrayValidationReportHelp>

with specific help available everywhere you see the ⓘ symbol.

The types of validation reports are described at

<http://www.wwpdb.org/validation/2017/FAQs#types>.

---

The following versions of software and data (see [references ⓘ](#)) were used in the production of this report:

MolProbity : 4.02b-467  
Mogul : 2022.3.0, CSD as543be (2022)  
Xtrriage (Phenix) : 1.20.1  
EDS : 3.0  
buster-report : 1.1.7 (2018)  
Percentile statistics : 20231227.v01 (using entries in the PDB archive December 27th 2023)  
CCP4 : 9.0.003 (Gargrove)  
Density-Fitness : 1.0.11  
Ideal geometry (proteins) : Engh & Huber (2001)  
Ideal geometry (DNA, RNA) : Parkinson et al. (1996)  
Validation Pipeline (wwPDB-VP) : 2.39

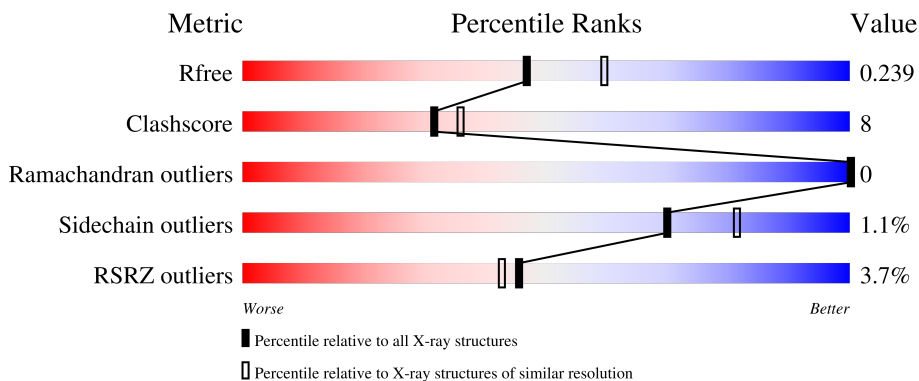
# 1 Overall quality at a glance

The following experimental techniques were used to determine the structure:

*X-RAY DIFFRACTION*

The reported resolution of this entry is 2.22 Å.

Percentile scores (ranging between 0-100) for global validation metrics of the entry are shown in the following graphic. The table shows the number of entries on which the scores are based.



Metric	Whole archive (#Entries)	Similar resolution (#Entries, resolution range(Å))
$R_{free}$	164625	7167 (2.24-2.20)
Clashscore	180529	8096 (2.24-2.20)
Ramachandran outliers	177936	8010 (2.24-2.20)
Sidechain outliers	177891	8011 (2.24-2.20)
RSRZ outliers	164620	7166 (2.24-2.20)

The table below summarises the geometric issues observed across the polymeric chains and their fit to the electron density. The red, orange, yellow and green segments of the lower bar indicate the fraction of residues that contain outliers for  $\geq 3$ , 2, 1 and 0 types of geometric quality criteria respectively. A grey segment represents the fraction of residues that are not modelled. The numeric value for each fraction is indicated below the corresponding segment, with a dot representing fractions  $\leq 5\%$ . The upper red bar (where present) indicates the fraction of residues that have poor fit to the electron density. The numeric value is given above the bar.

Mol	Chain	Length	Quality of chain
1	A	574	 2% 71% 17% 10%
1	B	574	 4% 71% 12% 13%

The following table lists non-polymeric compounds, carbohydrate monomers and non-standard residues in protein, DNA, RNA chains that are outliers for geometric or electron-density-fit criteria:

Mol	Type	Chain	Res	Chirality	Geometry	Clashes	Electron density
3	EDO	B	602	-	-	X	-

## 2 Entry composition [i](#)

There are 4 unique types of molecules in this entry. The entry contains 7685 atoms, of which 13 are hydrogens and 0 are deuteriums.

In the tables below, the ZeroOcc column contains the number of atoms modelled with zero occupancy, the AltConf column contains the number of residues with at least one atom in alternate conformation and the Trace column contains the number of residues modelled with at most 2 atoms.

- Molecule 1 is a protein called 2,3-dihydroxybenzoate-AMP ligase.

Mol	Chain	Residues	Atoms					ZeroOcc	AltConf	Trace	
			Total	C	H	N	O				S
1	A	507	3834	2448	1	651	723	11	0	0	0
1	B	479	3585	2292	606	678	9		0	0	0

There are 70 discrepancies between the modelled and reference sequences:

Chain	Residue	Modelled	Actual	Comment	Reference
A	-34	MET	-	initiating methionine	UNP A0A5P1UDB1
A	-33	GLY	-	expression tag	UNP A0A5P1UDB1
A	-32	SER	-	expression tag	UNP A0A5P1UDB1
A	-31	SER	-	expression tag	UNP A0A5P1UDB1
A	-30	HIS	-	expression tag	UNP A0A5P1UDB1
A	-29	HIS	-	expression tag	UNP A0A5P1UDB1
A	-28	HIS	-	expression tag	UNP A0A5P1UDB1
A	-27	HIS	-	expression tag	UNP A0A5P1UDB1
A	-26	HIS	-	expression tag	UNP A0A5P1UDB1
A	-25	HIS	-	expression tag	UNP A0A5P1UDB1
A	-24	SER	-	expression tag	UNP A0A5P1UDB1
A	-23	SER	-	expression tag	UNP A0A5P1UDB1
A	-22	GLY	-	expression tag	UNP A0A5P1UDB1
A	-21	LEU	-	expression tag	UNP A0A5P1UDB1
A	-20	VAL	-	expression tag	UNP A0A5P1UDB1
A	-19	PRO	-	expression tag	UNP A0A5P1UDB1
A	-18	ARG	-	expression tag	UNP A0A5P1UDB1
A	-17	GLY	-	expression tag	UNP A0A5P1UDB1
A	-16	SER	-	expression tag	UNP A0A5P1UDB1
A	-15	HIS	-	expression tag	UNP A0A5P1UDB1
A	-14	MET	-	expression tag	UNP A0A5P1UDB1
A	-13	ALA	-	expression tag	UNP A0A5P1UDB1
A	-12	SER	-	expression tag	UNP A0A5P1UDB1
A	-11	MET	-	expression tag	UNP A0A5P1UDB1
A	-10	THR	-	expression tag	UNP A0A5P1UDB1

*Continued on next page...*

*Continued from previous page...*

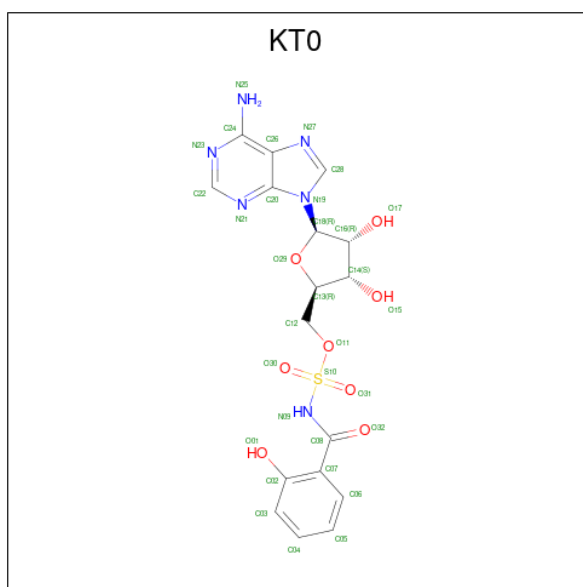
Chain	Residue	Modelled	Actual	Comment	Reference
A	-9	GLY	-	expression tag	UNP A0A5P1UDB1
A	-8	GLY	-	expression tag	UNP A0A5P1UDB1
A	-7	GLN	-	expression tag	UNP A0A5P1UDB1
A	-6	GLN	-	expression tag	UNP A0A5P1UDB1
A	-5	MET	-	expression tag	UNP A0A5P1UDB1
A	-4	GLY	-	expression tag	UNP A0A5P1UDB1
A	-3	ARG	-	expression tag	UNP A0A5P1UDB1
A	-2	GLY	-	expression tag	UNP A0A5P1UDB1
A	-1	SER	-	expression tag	UNP A0A5P1UDB1
A	0	ILE	-	expression tag	UNP A0A5P1UDB1
B	-34	MET	-	initiating methionine	UNP A0A5P1UDB1
B	-33	GLY	-	expression tag	UNP A0A5P1UDB1
B	-32	SER	-	expression tag	UNP A0A5P1UDB1
B	-31	SER	-	expression tag	UNP A0A5P1UDB1
B	-30	HIS	-	expression tag	UNP A0A5P1UDB1
B	-29	HIS	-	expression tag	UNP A0A5P1UDB1
B	-28	HIS	-	expression tag	UNP A0A5P1UDB1
B	-27	HIS	-	expression tag	UNP A0A5P1UDB1
B	-26	HIS	-	expression tag	UNP A0A5P1UDB1
B	-25	HIS	-	expression tag	UNP A0A5P1UDB1
B	-24	SER	-	expression tag	UNP A0A5P1UDB1
B	-23	SER	-	expression tag	UNP A0A5P1UDB1
B	-22	GLY	-	expression tag	UNP A0A5P1UDB1
B	-21	LEU	-	expression tag	UNP A0A5P1UDB1
B	-20	VAL	-	expression tag	UNP A0A5P1UDB1
B	-19	PRO	-	expression tag	UNP A0A5P1UDB1
B	-18	ARG	-	expression tag	UNP A0A5P1UDB1
B	-17	GLY	-	expression tag	UNP A0A5P1UDB1
B	-16	SER	-	expression tag	UNP A0A5P1UDB1
B	-15	HIS	-	expression tag	UNP A0A5P1UDB1
B	-14	MET	-	expression tag	UNP A0A5P1UDB1
B	-13	ALA	-	expression tag	UNP A0A5P1UDB1
B	-12	SER	-	expression tag	UNP A0A5P1UDB1
B	-11	MET	-	expression tag	UNP A0A5P1UDB1
B	-10	THR	-	expression tag	UNP A0A5P1UDB1
B	-9	GLY	-	expression tag	UNP A0A5P1UDB1
B	-8	GLY	-	expression tag	UNP A0A5P1UDB1
B	-7	GLN	-	expression tag	UNP A0A5P1UDB1
B	-6	GLN	-	expression tag	UNP A0A5P1UDB1
B	-5	MET	-	expression tag	UNP A0A5P1UDB1
B	-4	GLY	-	expression tag	UNP A0A5P1UDB1
B	-3	ARG	-	expression tag	UNP A0A5P1UDB1

*Continued on next page...*

Continued from previous page...

Chain	Residue	Modelled	Actual	Comment	Reference
B	-2	GLY	-	expression tag	UNP A0A5P1UDB1
B	-1	SER	-	expression tag	UNP A0A5P1UDB1
B	0	ILE	-	expression tag	UNP A0A5P1UDB1

- Molecule 2 is 5'-O-[(2-hydroxybenzoyl)sulfamoyl]adenosine (three-letter code: KT0) (formula: C<sub>17</sub>H<sub>18</sub>N<sub>6</sub>O<sub>8</sub>S) (labeled as "Ligand of Interest" by depositor).



Mol	Chain	Residues	Atoms					ZeroOcc	AltConf
			Total	C	N	O	S		
2	A	1	32	17	6	8	1	0	0
2	B	1	32	17	6	8	1	0	0

- Molecule 3 is 1,2-ETHANEDIOL (three-letter code: EDO) (formula: C<sub>2</sub>H<sub>6</sub>O<sub>2</sub>).



Mol	Chain	Residues	Atoms			ZeroOcc	AltConf	
3	A	1	Total	C	H	O	0	0
			10	2	6	2		
3	B	1	Total	C	H	O	0	0
			10	2	6	2		

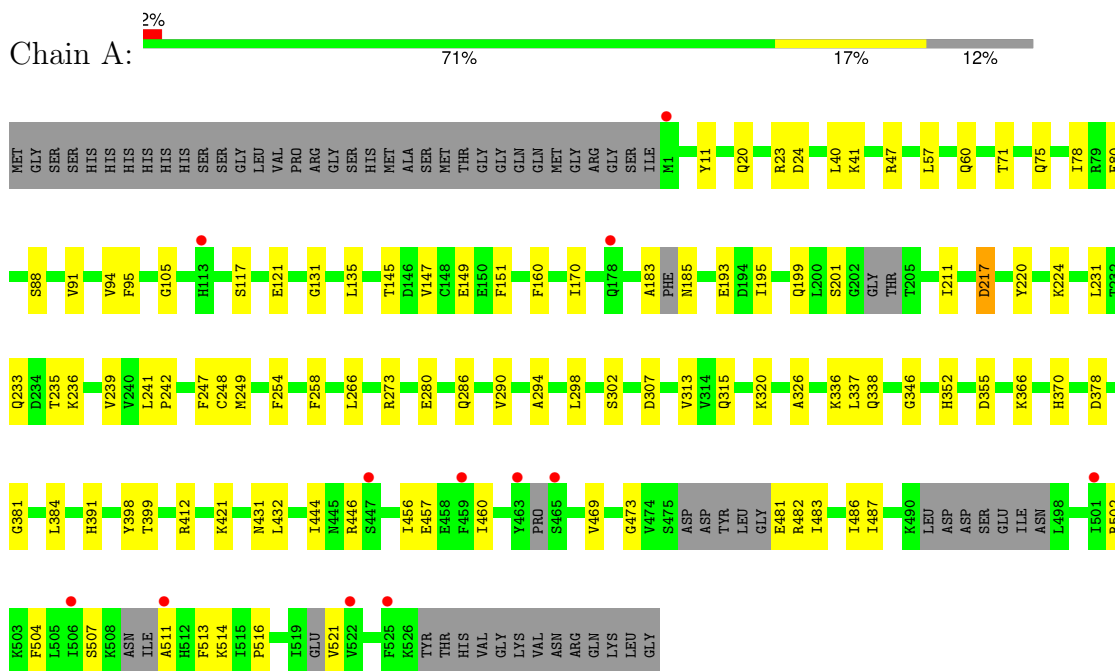
- Molecule 4 is water.

Mol	Chain	Residues	Atoms		ZeroOcc	AltConf
4	A	103	Total	O	0	0
			103	103		
4	B	79	Total	O	0	0
			79	79		

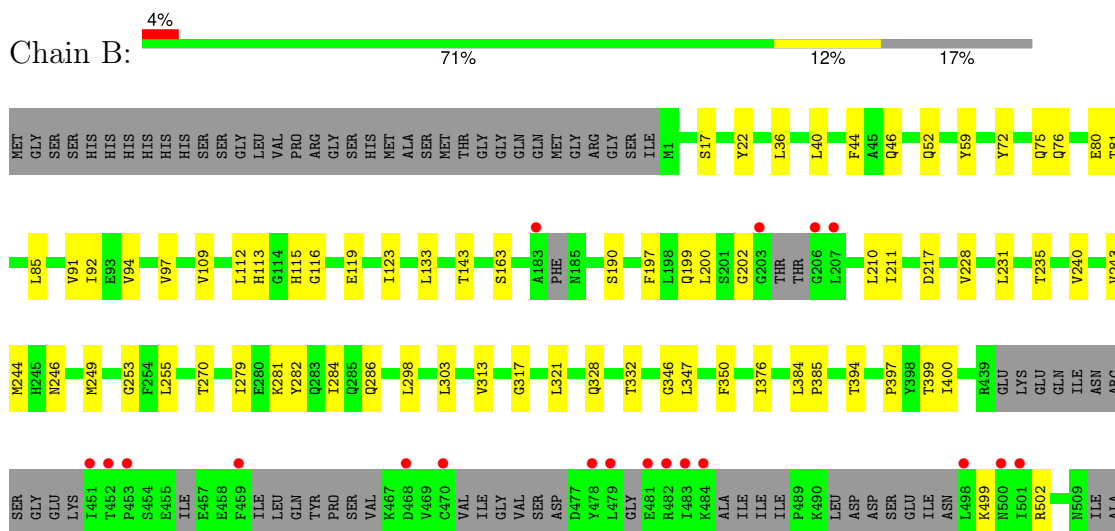
### 3 Residue-property plots

These plots are drawn for all protein, RNA, DNA and oligosaccharide chains in the entry. The first graphic for a chain summarises the proportions of the various outlier classes displayed in the second graphic. The second graphic shows the sequence view annotated by issues in geometry and electron density. Residues are color-coded according to the number of geometric quality criteria for which they contain at least one outlier: green = 0, yellow = 1, orange = 2 and red = 3 or more. A red dot above a residue indicates a poor fit to the electron density ( $RSRZ > 2$ ). Stretches of 2 or more consecutive residues without any outlier are shown as a green connector. Residues present in the sample, but not in the model, are shown in grey.

- Molecule 1: 2,3-dihydroxybenzoate-AMP ligase



- Molecule 1: 2,3-dihydroxybenzoate-AMP ligase





H512	I519	ALA
F513	GIU	ASP
R514	V521	PHE
I515	V522	LYS
		TYR
		THR
		HIS
		VAL
		GLY
		LYS
		VAL
		ASN
		ARG
		GLN
		LYS
		LEU
		GLY

## 4 Data and refinement statistics i

Property	Value	Source
Space group	P 1	Depositor
Cell constants a, b, c, $\alpha$ , $\beta$ , $\gamma$	56.33Å 74.17Å 75.56Å 85.05° 69.91° 70.09°	Depositor
Resolution (Å)	35.58 – 2.22 35.58 – 2.23	Depositor EDS
% Data completeness (in resolution range)	98.0 (35.58-2.22) 93.7 (35.58-2.23)	Depositor EDS
$R_{merge}$	0.19	Depositor
$R_{sym}$	(Not available)	Depositor
$\langle I/\sigma(I) \rangle$ <sup>1</sup>	0.89 (at 2.22Å)	Xtrriage
Refinement program	PHENIX 1.20.1_4487	Depositor
R, $R_{free}$	0.198 , 0.239 0.197 , 0.239	Depositor DCC
$R_{free}$ test set	50019 reflections (3.85%)	wwPDB-VP
Wilson B-factor (Å <sup>2</sup> )	36.4	Xtrriage
Anisotropy	0.232	Xtrriage
Bulk solvent $k_{sol}$ (e/Å <sup>3</sup> ), $B_{sol}$ (Å <sup>2</sup> )	0.33 , 48.2	EDS
L-test for twinning <sup>2</sup>	$\langle  L  \rangle = 0.49$ , $\langle L^2 \rangle = 0.32$	Xtrriage
Estimated twinning fraction	0.013 for -h,-l,-k	Xtrriage
$F_o, F_c$ correlation	0.94	EDS
Total number of atoms	7685	wwPDB-VP
Average B, all atoms (Å <sup>2</sup> )	50.0	wwPDB-VP

Xtrriage's analysis on translational NCS is as follows: *The largest off-origin peak in the Patterson function is 6.74% of the height of the origin peak. No significant pseudotranslation is detected.*

<sup>1</sup>Intensities estimated from amplitudes.

<sup>2</sup>Theoretical values of  $\langle |L| \rangle$ ,  $\langle L^2 \rangle$  for acentric reflections are 0.5, 0.333 respectively for untwinned datasets, and 0.375, 0.2 for perfectly twinned datasets.

## 5 Model quality

### 5.1 Standard geometry

Bond lengths and bond angles in the following residue types are not validated in this section: KT0, EDO

The Z score for a bond length (or angle) is the number of standard deviations the observed value is removed from the expected value. A bond length (or angle) with  $|Z| > 5$  is considered an outlier worth inspection. RMSZ is the root-mean-square of all Z scores of the bond lengths (or angles).

Mol	Chain	Bond lengths		Bond angles	
		RMSZ	# Z  >5	RMSZ	# Z  >5
1	A	0.44	0/3903	0.60	0/5302
1	B	0.41	0/3648	0.57	0/4956
All	All	0.42	0/7551	0.58	0/10258

There are no bond length outliers.

There are no bond angle outliers.

There are no chirality outliers.

There are no planarity outliers.

### 5.2 Too-close contacts

In the following table, the Non-H and H(model) columns list the number of non-hydrogen atoms and hydrogen atoms in the chain respectively. The H(added) column lists the number of hydrogen atoms added and optimized by MolProbity. The Clashes column lists the number of clashes within the asymmetric unit, whereas Symm-Clashes lists symmetry-related clashes.

Mol	Chain	Non-H	H(model)	H(added)	Clashes	Symm-Clashes
1	A	3833	1	3658	64	0
1	B	3585	0	3366	49	0
2	A	32	0	0	1	0
2	B	32	0	0	2	0
3	A	4	6	6	2	0
3	B	4	6	6	4	0
4	A	103	0	0	4	0
4	B	79	0	0	4	0
All	All	7672	13	7036	116	0

The all-atom clashscore is defined as the number of clashes found per 1000 atoms (including hydrogen atoms). The all-atom clashscore for this structure is 8.

All (116) close contacts within the same asymmetric unit are listed below, sorted by their clash magnitude.

Atom-1	Atom-2	Interatomic distance (Å)	Clash overlap (Å)
1:B:240:VAL:HG22	1:B:270:THR:HG22	1.55	0.89
1:B:116:GLY:N	1:B:119:GLU:OE1	2.14	0.79
1:B:240:VAL:CG2	1:B:270:THR:HG22	2.15	0.77
1:A:80:GLU:HG3	1:A:105:GLY:HA3	1.66	0.77
1:B:502:ARG:NH2	4:B:701:HOH:O	2.23	0.71
1:B:231:LEU:HD22	1:B:235:THR:HG21	1.73	0.70
1:A:366:LYS:HE2	1:A:431:ASN:O	1.93	0.68
1:A:444:ILE:HD12	1:A:483:ILE:HD12	1.75	0.67
1:B:202:GLY:CA	3:B:602:EDO:H11	2.25	0.66
1:A:294:ALA:O	1:A:298:LEU:HG	1.96	0.66
1:B:202:GLY:HA3	3:B:602:EDO:H11	1.79	0.65
2:B:601:KT0:O30	3:B:602:EDO:H12	1.97	0.64
1:A:193:GLU:HG3	4:A:746:HOH:O	1.98	0.63
1:A:231:LEU:HD22	1:A:235:THR:HG21	1.80	0.63
1:A:78:ILE:HD11	1:A:160:PHE:CE2	2.37	0.59
1:B:143:THR:HB	1:B:163:SER:OG	2.02	0.59
1:B:123:ILE:HG23	1:B:210:LEU:HD21	1.84	0.59
1:B:249:MET:HG2	1:B:255:LEU:HD12	1.83	0.59
1:A:391:HIS:CE1	1:A:421:LYS:HB3	2.39	0.57
1:A:78:ILE:HD11	1:A:160:PHE:CD2	2.39	0.57
1:B:347:LEU:HD22	1:B:394:THR:OG1	2.05	0.57
1:B:279:ILE:HA	1:B:284:ILE:HG12	1.87	0.56
1:A:444:ILE:HG21	1:A:483:ILE:CD1	2.37	0.55
1:A:326:ALA:HB1	1:A:337:LEU:CD2	2.37	0.55
2:B:601:KT0:O01	2:B:601:KT0:N09	2.40	0.54
1:A:145:THR:O	1:A:149:GLU:HG3	2.08	0.54
1:A:286:GLN:HG2	1:A:313:VAL:HB	1.90	0.53
1:A:201:SER:HB3	1:A:211:ILE:HD11	1.88	0.53
1:A:241:LEU:HD21	1:A:290:VAL:HG13	1.90	0.53
1:A:456:ILE:O	1:A:460:ILE:HG13	2.09	0.53
1:B:197:PHE:HE1	1:B:199:GLN:HG3	1.73	0.53
1:B:22:TYR:CE2	1:B:397:PRO:HA	2.44	0.53
1:A:95:PHE:HE2	1:A:266:LEU:HD22	1.74	0.52
2:A:601:KT0:N09	2:A:601:KT0:O01	2.41	0.52
1:A:91:VAL:O	1:A:94:VAL:HG12	2.09	0.52
1:A:381:GLY:HA2	4:A:791:HOH:O	2.09	0.52
1:A:47:ARG:NH2	1:A:233:GLN:O	2.42	0.51
1:A:378:ASP:HB3	1:A:384:LEU:HD21	1.92	0.51
1:A:504:PHE:O	1:A:507:SER:HB3	2.10	0.51
1:A:473:GLY:HA2	1:A:482:ARG:O	2.10	0.51

*Continued on next page...*

*Continued from previous page...*

Atom-1	Atom-2	Interatomic distance (Å)	Clash overlap (Å)
1:B:80:GLU:O	1:B:81:THR:OG1	2.22	0.50
1:A:88:SER:HB2	1:A:135:LEU:HB2	1.93	0.50
1:A:121:GLU:HB2	1:A:151:PHE:CD1	2.47	0.50
1:B:52:GLN:OE1	1:B:92:ILE:N	2.43	0.50
1:B:200:LEU:HD23	1:B:210:LEU:HD23	1.94	0.50
1:A:280:GLU:HG3	1:A:307:ASP:HB3	1.94	0.50
1:B:298:LEU:CD2	1:B:328:GLN:HG2	2.42	0.49
1:A:20:GLN:NE2	1:A:24:ASP:OD1	2.45	0.49
1:A:183:ALA:O	1:A:185:ASN:N	2.45	0.49
1:A:456:ILE:HD11	1:A:514:LYS:HB3	1.95	0.49
1:A:249:MET:HG3	1:A:254:PHE:CZ	2.48	0.48
1:B:44:PHE:O	1:B:59:TYR:HB2	2.13	0.48
1:A:41:LYS:HG3	1:A:60:GLN:HA	1.95	0.48
1:A:131:GLY:HA2	1:A:160:PHE:HB3	1.95	0.48
1:A:336:LYS:HE3	4:A:767:HOH:O	2.13	0.48
1:A:57:LEU:HD21	1:A:170:ILE:HD13	1.96	0.47
1:A:511:ALA:HB3	1:A:514:LYS:HD2	1.96	0.47
1:A:220:TYR:CE1	1:A:224:LYS:HE2	2.48	0.47
1:A:446:ARG:HG3	1:A:481:GLU:O	2.14	0.47
1:A:20:GLN:HA	1:A:23:ARG:NH1	2.30	0.47
1:A:117:SER:HB3	1:A:147:VAL:HG13	1.96	0.47
1:A:315:GLN:HA	1:A:338:GLN:O	2.14	0.47
1:B:240:VAL:CG2	1:B:270:THR:HA	2.45	0.47
1:A:20:GLN:HE21	1:A:24:ASP:CG	2.18	0.47
1:A:391:HIS:HE1	1:A:421:LYS:HB3	1.79	0.47
1:B:97:VAL:CG1	1:B:133:LEU:HD13	2.45	0.47
1:B:112:LEU:HD23	1:B:244:MET:HB2	1.96	0.46
1:B:80:GLU:OE1	1:B:190:SER:OG	2.28	0.46
1:A:199:GLN:HG3	4:A:761:HOH:O	2.15	0.46
1:B:211:ILE:HG23	1:B:400:ILE:HG21	1.97	0.45
1:B:72:TYR:O	1:B:76:GLN:HG2	2.16	0.45
1:B:228:VAL:HG11	1:B:350:PHE:CG	2.52	0.45
1:B:317:GLY:HA2	4:B:755:HOH:O	2.17	0.45
1:B:199:GLN:HE22	1:B:246:ASN:HB2	1.81	0.45
1:B:499:LYS:N	1:B:499:LYS:HD3	2.31	0.45
1:A:456:ILE:CD1	1:A:514:LYS:O	2.64	0.45
1:B:298:LEU:HD23	1:B:328:GLN:HG2	1.99	0.45
1:A:469:VAL:HA	1:A:486:ILE:O	2.16	0.44
1:A:11:TYR:CG	1:A:195:ILE:HD11	2.52	0.44
1:B:202:GLY:HA2	3:B:602:EDO:H11	1.99	0.44
1:A:456:ILE:HD13	1:A:514:LYS:O	2.17	0.44

*Continued on next page...*

*Continued from previous page...*

Atom-1	Atom-2	Interatomic distance (Å)	Clash overlap (Å)
1:B:36:LEU:O	1:B:40:LEU:HG	2.16	0.44
1:B:46:GLN:OE1	1:B:46:GLN:HA	2.18	0.44
1:A:71:THR:O	1:A:75:GLN:HG3	2.17	0.44
1:B:97:VAL:HG13	1:B:133:LEU:HD13	2.00	0.44
1:A:352:HIS:O	1:A:355:ASP:HB2	2.18	0.43
1:A:370:HIS:HA	3:A:602:EDO:H22	2.00	0.43
1:A:457:GLU:HG2	1:A:469:VAL:HG13	2.00	0.43
1:B:85:LEU:HA	1:B:109:VAL:HB	2.00	0.43
1:B:286:GLN:HA	1:B:313:VAL:O	2.18	0.43
1:B:321:LEU:HA	4:B:722:HOH:O	2.19	0.43
1:A:444:ILE:CD1	1:A:483:ILE:HD12	2.47	0.43
1:B:376:ILE:O	1:B:384:LEU:N	2.49	0.43
1:A:217:ASP:HB2	1:A:398:TYR:HA	2.01	0.42
1:A:239:VAL:HG13	1:A:248:CYS:SG	2.59	0.42
1:A:370:HIS:CA	3:A:602:EDO:H22	2.49	0.42
1:B:303:LEU:HD21	1:B:332:THR:CG2	2.49	0.42
1:B:52:GLN:OE1	1:B:91:VAL:HA	2.19	0.42
1:B:91:VAL:O	1:B:94:VAL:HG12	2.19	0.42
1:B:240:VAL:HG21	1:B:270:THR:HA	2.01	0.42
1:A:513:PHE:CZ	1:A:514:LYS:HE3	2.54	0.42
1:B:75:GLN:HE21	1:B:75:GLN:HB2	1.64	0.42
1:A:241:LEU:HB3	1:A:242:PRO:HD2	2.01	0.42
1:A:273:ARG:CZ	1:A:302:SER:HB3	2.50	0.41
1:B:115:HIS:ND1	1:B:119:GLU:HG2	2.36	0.41
1:A:40:LEU:HD13	1:A:258:PHE:O	2.21	0.41
1:A:346:GLY:HA3	1:A:399:THR:HA	2.02	0.41
1:A:502:ARG:NH1	1:A:516:PRO:O	2.54	0.41
1:B:281:LYS:HD3	1:B:282:TYR:CE2	2.56	0.41
1:B:384:LEU:HB3	1:B:385:PRO:HD2	2.02	0.41
1:B:113:HIS:HD2	4:B:723:HOH:O	2.04	0.40
1:A:88:SER:CB	1:A:135:LEU:HB2	2.51	0.40
1:B:346:GLY:HA3	1:B:399:THR:HA	2.02	0.40
1:A:487:ILE:O	1:A:521:VAL:HA	2.22	0.40
1:B:249:MET:C	1:B:253:GLY:HA3	2.42	0.40
1:A:366:LYS:HD3	1:A:432:LEU:O	2.21	0.40

There are no symmetry-related clashes.

## 5.3 Torsion angles [i](#)

### 5.3.1 Protein backbone [i](#)

In the following table, the Percentiles column shows the percent Ramachandran outliers of the chain as a percentile score with respect to all X-ray entries followed by that with respect to entries of similar resolution.

The Analysed column shows the number of residues for which the backbone conformation was analysed, and the total number of residues.

Mol	Chain	Analysed	Favoured	Allowed	Outliers	Percentiles	
1	A	491/574 (86%)	477 (97%)	14 (3%)	0	100	100
1	B	455/574 (79%)	442 (97%)	13 (3%)	0	100	100
All	All	946/1148 (82%)	919 (97%)	27 (3%)	0	100	100

There are no Ramachandran outliers to report.

### 5.3.2 Protein sidechains [i](#)

In the following table, the Percentiles column shows the percent sidechain outliers of the chain as a percentile score with respect to all X-ray entries followed by that with respect to entries of similar resolution.

The Analysed column shows the number of residues for which the sidechain conformation was analysed, and the total number of residues.

Mol	Chain	Analysed	Rotameric	Outliers	Percentiles	
1	A	390/498 (78%)	385 (99%)	5 (1%)	65	77
1	B	358/498 (72%)	355 (99%)	3 (1%)	79	87
All	All	748/996 (75%)	740 (99%)	8 (1%)	70	81

All (8) residues with a non-rotameric sidechain are listed below:

Mol	Chain	Res	Type
1	A	217	ASP
1	A	236	LYS
1	A	247	PHE
1	A	320	LYS
1	A	412	ARG
1	B	17	SER
1	B	217	ASP
1	B	243	VAL

Sometimes sidechains can be flipped to improve hydrogen bonding and reduce clashes. All (6) such sidechains are listed below:

Mol	Chain	Res	Type
1	A	20	GLN
1	A	75	GLN
1	A	328	GLN
1	B	75	GLN
1	B	199	GLN
1	B	431	ASN

### 5.3.3 RNA [i](#)

There are no RNA molecules in this entry.

### 5.4 Non-standard residues in protein, DNA, RNA chains [i](#)

There are no non-standard protein/DNA/RNA residues in this entry.

### 5.5 Carbohydrates [i](#)

There are no oligosaccharides in this entry.

### 5.6 Ligand geometry [i](#)

4 ligands are modelled in this entry.

In the following table, the Counts columns list the number of bonds (or angles) for which Mogul statistics could be retrieved, the number of bonds (or angles) that are observed in the model and the number of bonds (or angles) that are defined in the Chemical Component Dictionary. The Link column lists molecule types, if any, to which the group is linked. The Z score for a bond length (or angle) is the number of standard deviations the observed value is removed from the expected value. A bond length (or angle) with  $|Z| > 2$  is considered an outlier worth inspection. RMSZ is the root-mean-square of all Z scores of the bond lengths (or angles).

Mol	Type	Chain	Res	Link	Bond lengths			Bond angles		
					Counts	RMSZ	# Z  > 2	Counts	RMSZ	# Z  > 2
3	EDO	B	602	-	3,3,3	0.64	0	2,2,2	0.10	0
2	KT0	A	601	-	31,35,35	3.00	9 (29%)	35,52,52	2.23	5 (14%)
3	EDO	A	602	-	3,3,3	0.44	0	2,2,2	0.26	0
2	KT0	B	601	-	31,35,35	3.35	9 (29%)	35,52,52	1.98	6 (17%)

In the following table, the Chirals column lists the number of chiral outliers, the number of chiral



centers analysed, the number of these observed in the model and the number defined in the Chemical Component Dictionary. Similar counts are reported in the Torsion and Rings columns. '2' means no outliers of that kind were identified.

Mol	Type	Chain	Res	Link	Chirals	Torsions	Rings
3	EDO	B	602	-	-	0/1/1/1	-
2	KT0	A	601	-	-	1/14/35/35	0/4/4/4
3	EDO	A	602	-	-	1/1/1/1	-
2	KT0	B	601	-	-	1/14/35/35	0/4/4/4

All (18) bond length outliers are listed below:

Mol	Chain	Res	Type	Atoms	Z	Observed(Å)	Ideal(Å)
2	B	601	KT0	O31-S10	10.29	1.51	1.42
2	A	601	KT0	C14-C13	-8.50	1.31	1.53
2	B	601	KT0	C14-C13	-8.44	1.31	1.53
2	A	601	KT0	O31-S10	7.64	1.49	1.42
2	B	601	KT0	S10-N09	6.40	1.70	1.59
2	A	601	KT0	S10-N09	5.73	1.69	1.59
2	B	601	KT0	C16-C14	5.58	1.68	1.53
2	A	601	KT0	C16-C14	5.23	1.67	1.53
2	B	601	KT0	C08-N09	5.06	1.45	1.39
2	A	601	KT0	O29-C13	4.61	1.55	1.45
2	A	601	KT0	C08-N09	4.50	1.44	1.39
2	B	601	KT0	O29-C13	4.49	1.55	1.45
2	B	601	KT0	C24-N25	3.75	1.47	1.34
2	A	601	KT0	C24-N25	3.31	1.45	1.34
2	A	601	KT0	O11-S10	3.03	1.66	1.60
2	B	601	KT0	O01-C02	2.82	1.42	1.36
2	B	601	KT0	O11-S10	2.52	1.65	1.60
2	A	601	KT0	O01-C02	2.51	1.41	1.36

All (11) bond angle outliers are listed below:

Mol	Chain	Res	Type	Atoms	Z	Observed(°)	Ideal(°)
2	A	601	KT0	O31-S10-O30	-9.57	106.52	120.85
2	B	601	KT0	O31-S10-O30	-7.70	109.33	120.85
2	A	601	KT0	N21-C22-N23	-5.17	121.65	128.67
2	B	601	KT0	N21-C22-N23	-4.87	122.06	128.67
2	B	601	KT0	O11-S10-O30	2.90	114.25	105.48
2	B	601	KT0	C13-O29-C18	-2.67	107.48	109.92
2	A	601	KT0	O15-C14-C16	-2.54	103.68	111.82
2	A	601	KT0	O11-S10-O31	2.53	113.12	105.48
2	B	601	KT0	O11-C12-C13	-2.45	103.21	107.57

*Continued on next page...*

*Continued from previous page...*

Mol	Chain	Res	Type	Atoms	Z	Observed(°)	Ideal(°)
2	B	601	KT0	O11-S10-N09	2.29	111.63	105.69
2	A	601	KT0	C20-C26-N27	-2.22	106.99	109.34

There are no chirality outliers.

All (3) torsion outliers are listed below:

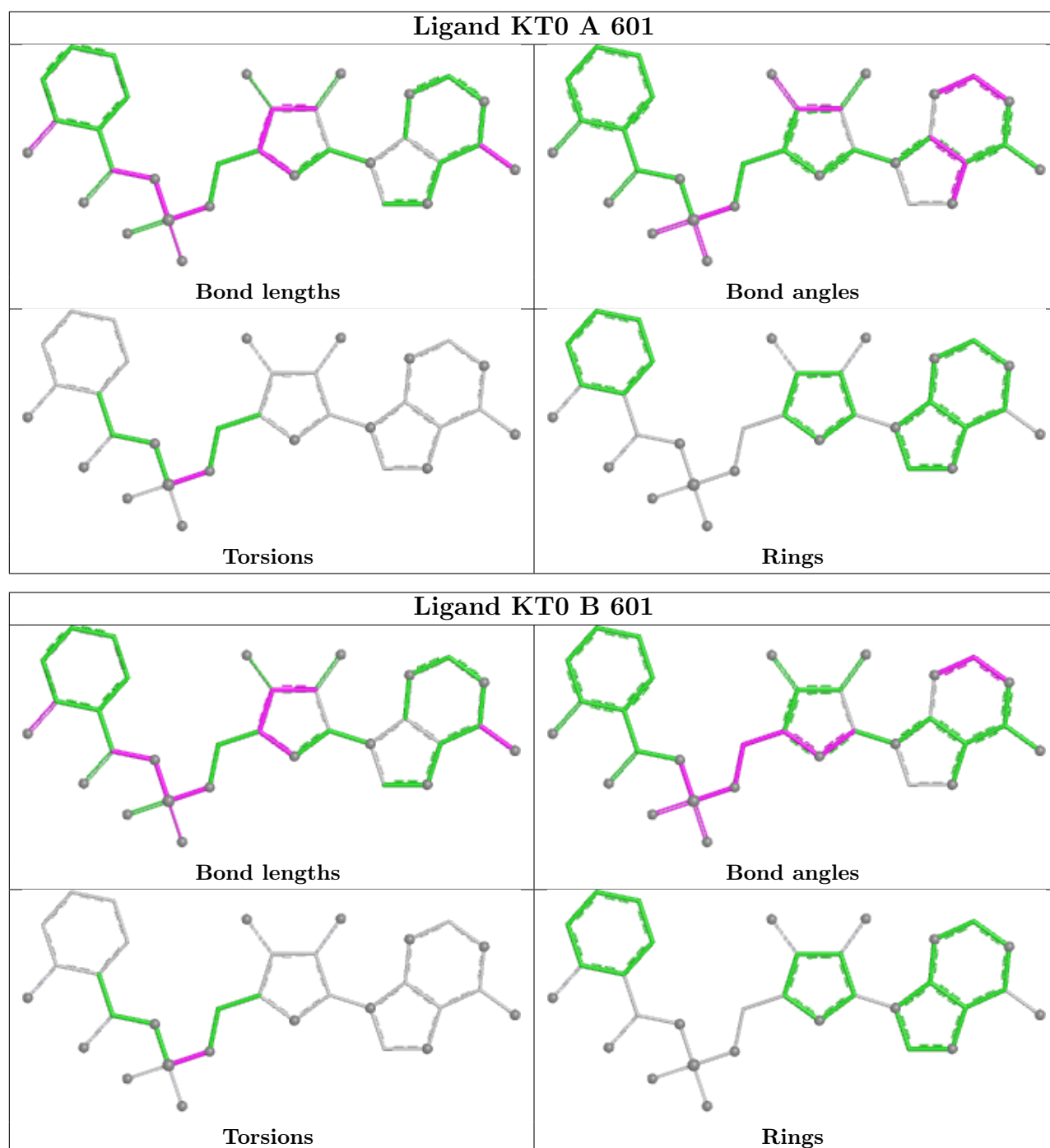
Mol	Chain	Res	Type	Atoms
2	A	601	KT0	C12-O11-S10-N09
3	A	602	EDO	O1-C1-C2-O2
2	B	601	KT0	C12-O11-S10-N09

There are no ring outliers.

4 monomers are involved in 8 short contacts:

Mol	Chain	Res	Type	Clashes	Symm-Clashes
3	B	602	EDO	4	0
2	A	601	KT0	1	0
3	A	602	EDO	2	0
2	B	601	KT0	2	0

The following is a two-dimensional graphical depiction of Mogul quality analysis of bond lengths, bond angles, torsion angles, and ring geometry for all instances of the Ligand of Interest. In addition, ligands with molecular weight > 250 and outliers as shown on the validation Tables will also be included. For torsion angles, if less than 5% of the Mogul distribution of torsion angles is within 10 degrees of the torsion angle in question, then that torsion angle is considered an outlier. Any bond that is central to one or more torsion angles identified as an outlier by Mogul will be highlighted in the graph. For rings, the root-mean-square deviation (RMSD) between the ring in question and similar rings identified by Mogul is calculated over all ring torsion angles. If the average RMSD is greater than 60 degrees and the minimal RMSD between the ring in question and any Mogul-identified rings is also greater than 60 degrees, then that ring is considered an outlier. The outliers are highlighted in purple. The color gray indicates Mogul did not find sufficient equivalents in the CSD to analyse the geometry.



## 5.7 Other polymers [i](#)

There are no such residues in this entry.

## 5.8 Polymer linkage issues [i](#)

There are no chain breaks in this entry.

## 6 Fit of model and data

### 6.1 Protein, DNA and RNA chains

In the following table, the column labelled ‘#RSRZ > 2’ contains the number (and percentage) of RSRZ outliers, followed by percent RSRZ outliers for the chain as percentile scores relative to all X-ray entries and entries of similar resolution. The OWAB column contains the minimum, median, 95<sup>th</sup> percentile and maximum values of the occupancy-weighted average B-factor per residue. The column labelled ‘Q < 0.9’ lists the number of (and percentage) of residues with an average occupancy less than 0.9.

Mol	Chain	Analysed	<RSRZ>	#RSRZ>2	OWAB(Å <sup>2</sup> )	Q<0.9
1	A	507/574 (88%)	0.16	12 (2%) 59 57	30, 44, 77, 97	0
1	B	479/574 (83%)	0.37	24 (5%) 35 32	34, 51, 95, 106	0
All	All	986/1148 (85%)	0.27	36 (3%) 45 43	30, 48, 85, 106	0

All (36) RSRZ outliers are listed below:

Mol	Chain	Res	Type	RSRZ
1	B	459	PHE	4.1
1	A	525	PHE	3.8
1	B	522	VAL	3.6
1	B	451	ILE	3.3
1	B	478	TYR	3.3
1	B	521	VAL	3.3
1	B	515	ILE	2.9
1	B	470	CYS	2.9
1	B	512	HIS	2.9
1	B	481	GLU	2.9
1	A	1	MET	2.8
1	B	479	LEU	2.8
1	B	453	PRO	2.7
1	B	482	ARG	2.6
1	B	206	GLY	2.6
1	A	463	TYR	2.6
1	B	498	LEU	2.6
1	A	511	ALA	2.5
1	A	506	ILE	2.5
1	B	483	ILE	2.5
1	A	113	HIS	2.5
1	B	183	ALA	2.4
1	A	459	PHE	2.3
1	B	468	ASP	2.3

*Continued on next page...*

*Continued from previous page...*

Mol	Chain	Res	Type	RSRZ
1	B	484	LYS	2.2
1	B	514	LYS	2.2
1	B	207	LEU	2.2
1	A	501	ILE	2.2
1	B	500	ASN	2.2
1	A	178	GLN	2.2
1	A	447	SER	2.1
1	A	522	VAL	2.1
1	A	465	SER	2.1
1	B	203	GLY	2.1
1	B	501	ILE	2.1
1	B	452	THR	2.1

## 6.2 Non-standard residues in protein, DNA, RNA chains [i](#)

There are no non-standard protein/DNA/RNA residues in this entry.

## 6.3 Carbohydrates [i](#)

There are no monosaccharides in this entry.

## 6.4 Ligands [i](#)

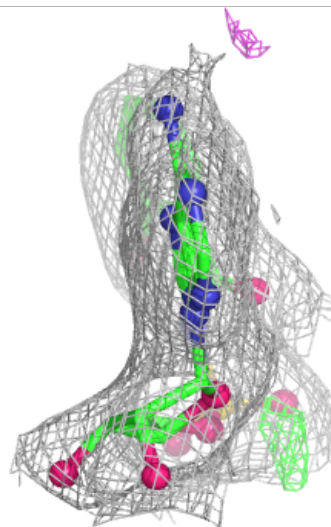
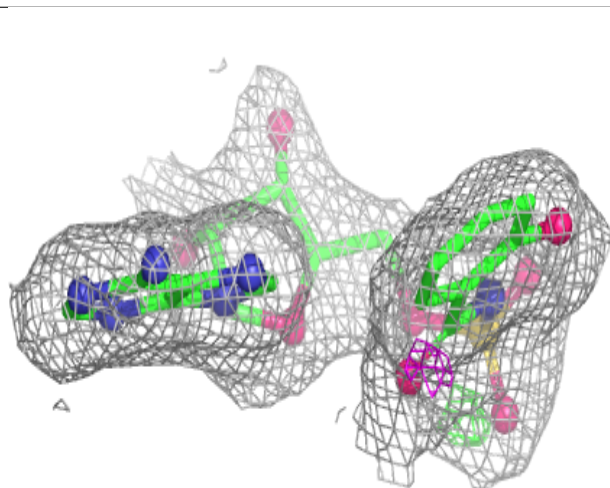
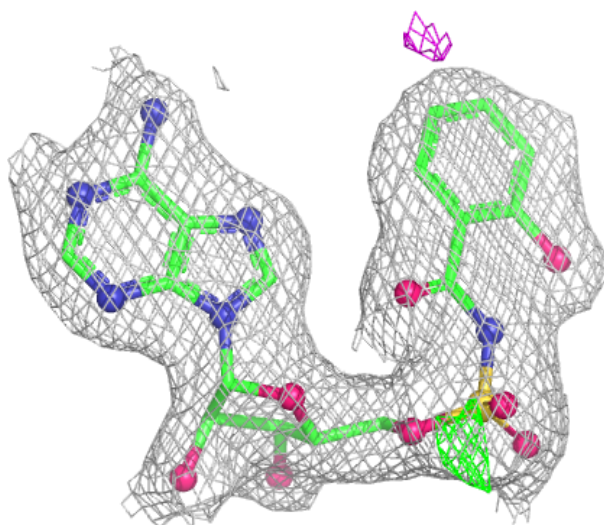
In the following table, the Atoms column lists the number of modelled atoms in the group and the number defined in the chemical component dictionary. The B-factors column lists the minimum, median, 95<sup>th</sup> percentile and maximum values of B factors of atoms in the group. The column labelled 'Q< 0.9' lists the number of atoms with occupancy less than 0.9.

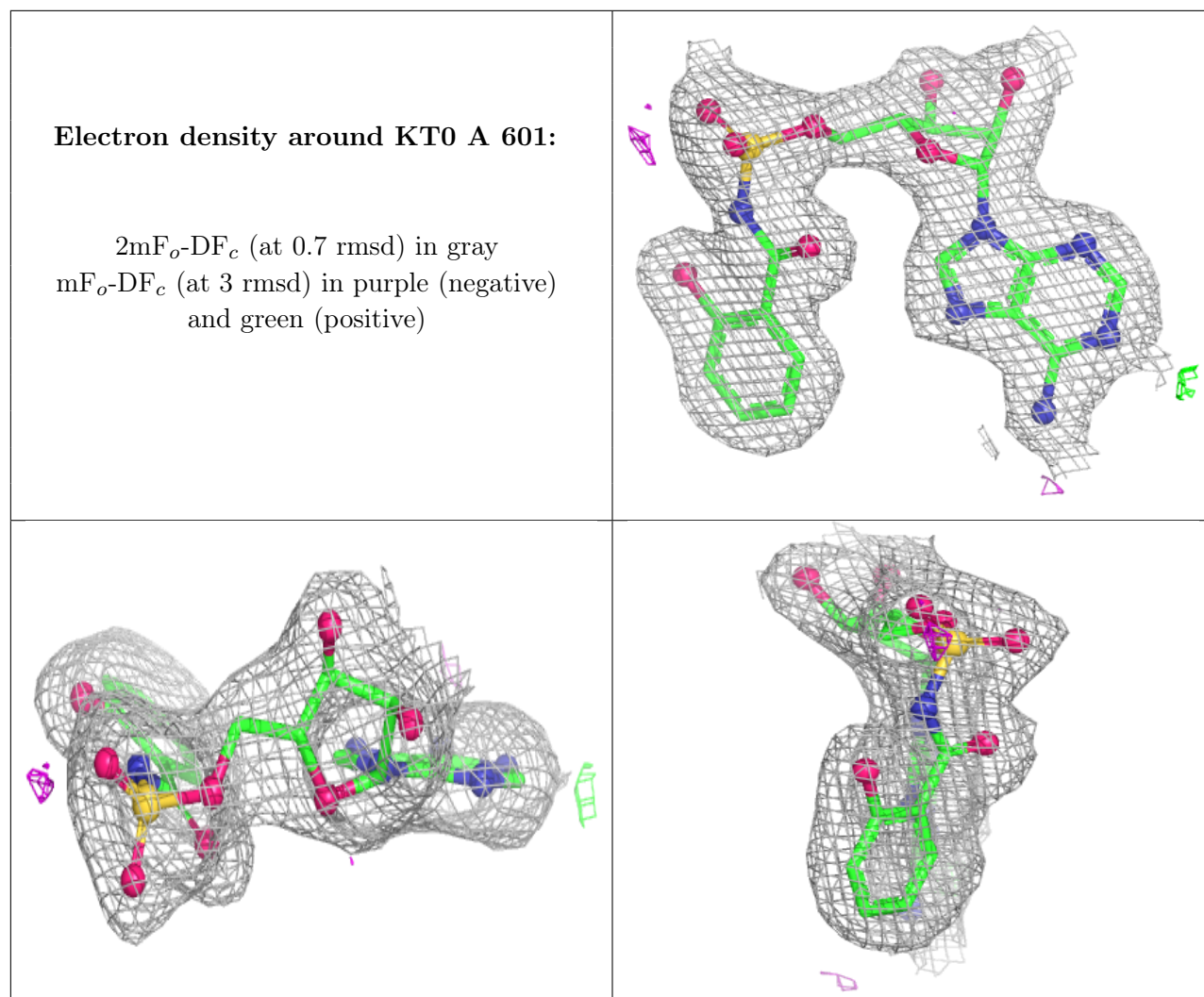
Mol	Type	Chain	Res	Atoms	RSCC	RSR	B-factors(Å <sup>2</sup> )	Q<0.9
3	EDO	B	602	4/4	0.70	0.17	55,66,67,67	0
3	EDO	A	602	4/4	0.81	0.14	46,56,63,70	0
2	KT0	B	601	32/32	0.96	0.08	34,40,44,44	0
2	KT0	A	601	32/32	0.97	0.06	29,34,38,40	0

The following is a graphical depiction of the model fit to experimental electron density of all instances of the Ligand of Interest. In addition, ligands with molecular weight > 250 and outliers as shown on the geometry validation Tables will also be included. Each fit is shown from different orientation to approximate a three-dimensional view.

**Electron density around KT0 B 601:**

$2mF_o-DF_c$  (at 0.7 rmsd) in gray  
 $mF_o-DF_c$  (at 3 rmsd) in purple (negative)  
and green (positive)





## 6.5 Other polymers [i](#)

There are no such residues in this entry.