



Full wwPDB X-ray Structure Validation Report ⓘ

Jun 15, 2024 – 02:12 PM EDT

PDB ID : 2BIE
Title : Radiation damage of the Schiff base in phosphoserine aminotransferase (structure H)
Authors : Dubnovitsky, A.P.; Ravelli, R.B.G.; Popov, A.N.; Papageorgiou, A.C.
Deposited on : 2005-01-21
Resolution : 1.30 Å (reported)

This is a Full wwPDB X-ray Structure Validation Report for a publicly released PDB entry.

We welcome your comments at validation@mail.wwpdb.org

A user guide is available at

<https://www.wwpdb.org/validation/2017/XrayValidationReportHelp>

with specific help available everywhere you see the ⓘ symbol.

The types of validation reports are described at

<http://www.wwpdb.org/validation/2017/FAQs#types>.

The following versions of software and data (see [references ⓘ](#)) were used in the production of this report:

MolProbity : 4.02b-467
Mogul : 2022.3.0, CSD as543be (2022)
Xtriage (Phenix) : 1.20.1
EDS : 2.37.1
Percentile statistics : 20191225.v01 (using entries in the PDB archive December 25th 2019)
Refmac : 5.8.0158
CCP4 : 7.0.044 (Gargrove)
Ideal geometry (proteins) : Engh & Huber (2001)
Ideal geometry (DNA, RNA) : Parkinson et al. (1996)
Validation Pipeline (wwPDB-VP) : 2.37.1

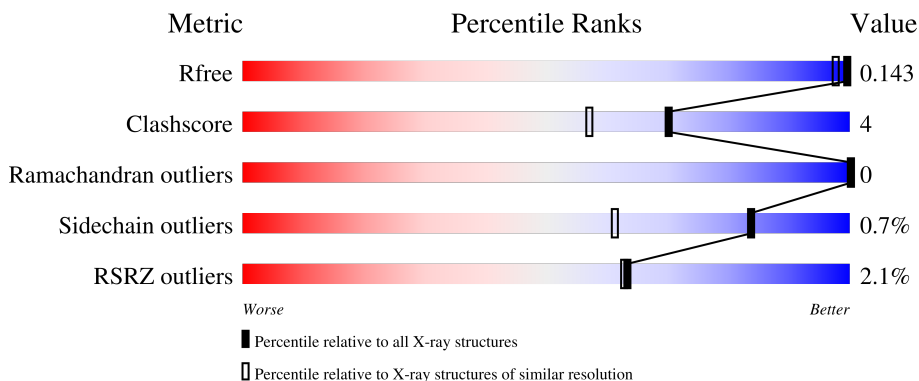
1 Overall quality at a glance

The following experimental techniques were used to determine the structure:

X-RAY DIFFRACTION

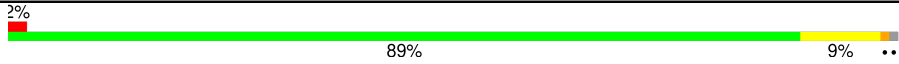

The reported resolution of this entry is 1.30 Å.

Percentile scores (ranging between 0-100) for global validation metrics of the entry are shown in the following graphic. The table shows the number of entries on which the scores are based.



Metric	Whole archive (#Entries)	Similar resolution (#Entries, resolution range(Å))
R_{free}	130704	1058 (1.30-1.30)
Clashscore	141614	1101 (1.30-1.30)
Ramachandran outliers	138981	1058 (1.30-1.30)
Sidechain outliers	138945	1058 (1.30-1.30)
RSRZ outliers	127900	1029 (1.30-1.30)

The table below summarises the geometric issues observed across the polymeric chains and their fit to the electron density. The red, orange, yellow and green segments of the lower bar indicate the fraction of residues that contain outliers for ≥ 3 , 2, 1 and 0 types of geometric quality criteria respectively. A grey segment represents the fraction of residues that are not modelled. The numeric value for each fraction is indicated below the corresponding segment, with a dot representing fractions $\leq 5\%$. The upper red bar (where present) indicates the fraction of residues that have poor fit to the electron density. The numeric value is given above the bar.

Mol	Chain	Length	Quality of chain
1	A	361	 2% 89% 9% ..
1	B	361	 2% 89% 8% ..

2 Entry composition [i](#)

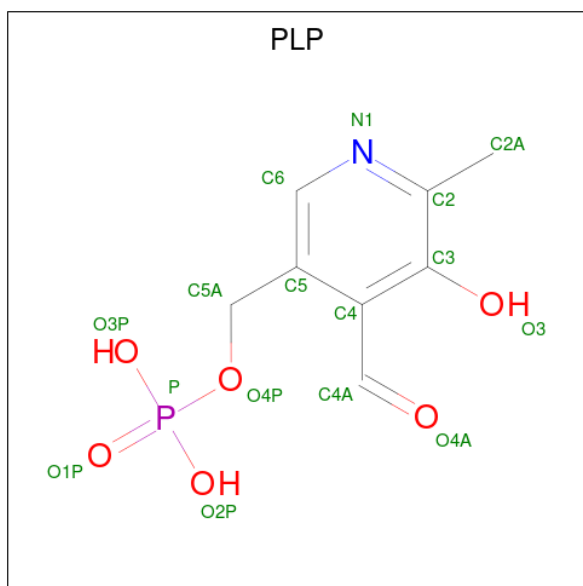
There are 7 unique types of molecules in this entry. The entry contains 6613 atoms, of which 0 are hydrogens and 0 are deuteriums.

In the tables below, the ZeroOcc column contains the number of atoms modelled with zero occupancy, the AltConf column contains the number of residues with at least one atom in alternate conformation and the Trace column contains the number of residues modelled with at most 2 atoms.

- Molecule 1 is a protein called PHOSPHOSERINE AMINOTRANSFERASE.

Mol	Chain	Residues	Atoms					ZeroOcc	AltConf	Trace
			Total	C	N	O	S			
1	A	358	Total 2871	C 1821	N 487	O 548	S 15	0	17	0
1	B	355	Total 2836	C 1801	N 480	O 541	S 14	0	14	0

- Molecule 2 is PYRIDOXAL-5'-PHOSPHATE (three-letter code: PLP) (formula: C₈H₁₀NO₆P).



Mol	Chain	Residues	Atoms					ZeroOcc	AltConf
			Total	C	N	O	P		
2	A	1	Total 15	C 8	N 1	O 5	P 1	0	0
2	B	1	Total 15	C 8	N 1	O 5	P 1	0	0

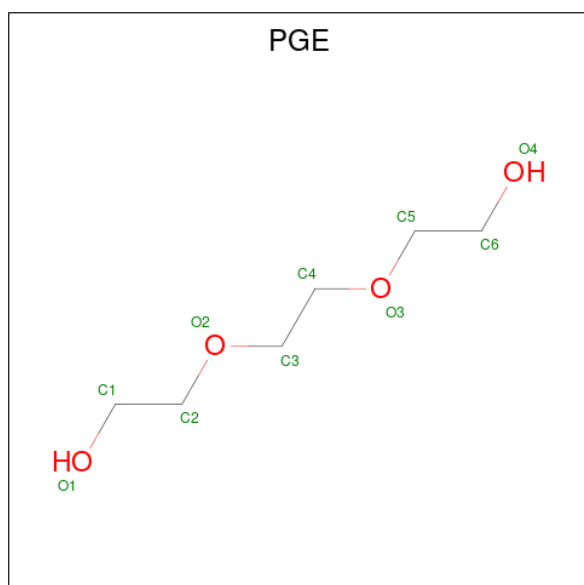
- Molecule 3 is MAGNESIUM ION (three-letter code: MG) (formula: Mg).

Mol	Chain	Residues	Atoms	ZeroOcc	AltConf
3	A	2	Total Mg 2 2	0	0
3	B	3	Total Mg 4 4	0	1

- Molecule 4 is CHLORIDE ION (three-letter code: CL) (formula: Cl).

Mol	Chain	Residues	Atoms	ZeroOcc	AltConf
4	A	2	Total Cl 2 2	0	0
4	B	2	Total Cl 2 2	0	0

- Molecule 5 is TRIETHYLENE GLYCOL (three-letter code: PGE) (formula: C₆H₁₄O₄).



Mol	Chain	Residues	Atoms	ZeroOcc	AltConf
5	A	1	Total C O 10 6 4	0	0

- Molecule 6 is DI(HYDROXYETHYL)ETHER (three-letter code: PEG) (formula: C₄H₁₀O₃).



Mol	Chain	Residues	Atoms	ZeroOcc	AltConf
6	A	1	Total C O 7 4 3	0	0
6	B	1	Total C O 7 4 3	0	0

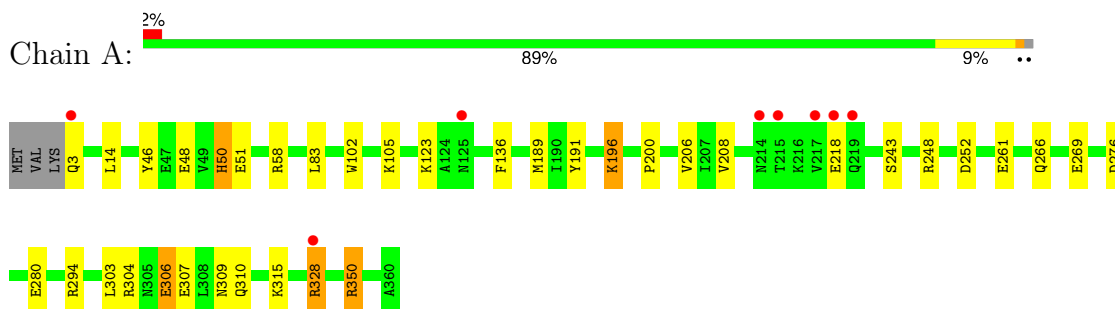
- Molecule 7 is water.

Mol	Chain	Residues	Atoms	ZeroOcc	AltConf
7	A	410	Total O 410 410	0	0
7	B	432	Total O 432 432	0	0

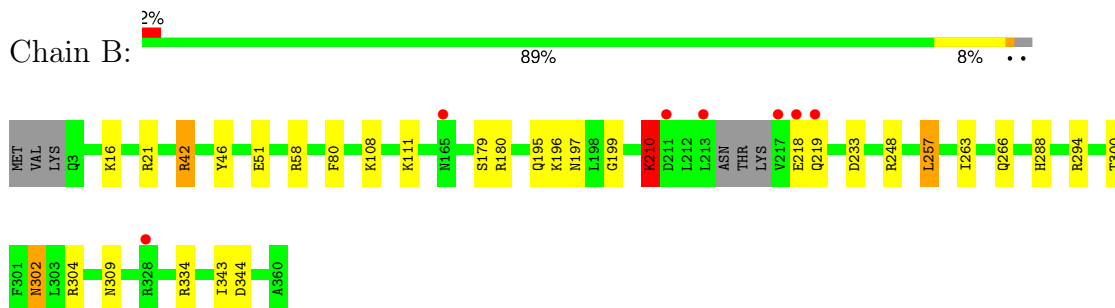
3 Residue-property plots [i](#)

These plots are drawn for all protein, RNA, DNA and oligosaccharide chains in the entry. The first graphic for a chain summarises the proportions of the various outlier classes displayed in the second graphic. The second graphic shows the sequence view annotated by issues in geometry and electron density. Residues are color-coded according to the number of geometric quality criteria for which they contain at least one outlier: green = 0, yellow = 1, orange = 2 and red = 3 or more. A red dot above a residue indicates a poor fit to the electron density ($RSRZ > 2$). Stretches of 2 or more consecutive residues without any outlier are shown as a green connector. Residues present in the sample, but not in the model, are shown in grey.

- Molecule 1: PHOSPHOSERINE AMINOTRANSFERASE



- Molecule 1: PHOSPHOSERINE AMINOTRANSFERASE



4 Data and refinement statistics

Property	Value	Source
Space group	P 21 21 2	Depositor
Cell constants a, b, c, α , β , γ	143.73Å 84.27Å 67.21Å 90.00° 90.00° 90.00°	Depositor
Resolution (Å)	12.00 – 1.30 11.98 – 1.30	Depositor EDS
% Data completeness (in resolution range)	96.2 (12.00-1.30) 96.2 (11.98-1.30)	Depositor EDS
R_{merge}	0.06	Depositor
R_{sym}	(Not available)	Depositor
$\langle I/\sigma(I) \rangle$ ¹	2.26 (at 1.30Å)	Xtrriage
Refinement program	SHELXL-97	Depositor
R, R_{free}	0.130 , 0.164 0.138 , 0.143	Depositor DCC
R_{free} test set	9361 reflections (4.86%)	wwPDB-VP
Wilson B-factor (Å ²)	12.1	Xtrriage
Anisotropy	0.337	Xtrriage
Bulk solvent k_{sol} (e/Å ³), B_{sol} (Å ²)	0.45 , 79.7	EDS
L-test for twinning ²	$\langle L \rangle = 0.50$, $\langle L^2 \rangle = 0.33$	Xtrriage
Estimated twinning fraction	No twinning to report.	Xtrriage
F_o, F_c correlation	0.98	EDS
Total number of atoms	6613	wwPDB-VP
Average B, all atoms (Å ²)	18.0	wwPDB-VP

Xtrriage's analysis on translational NCS is as follows: *The largest off-origin peak in the Patterson function is 4.44% of the height of the origin peak. No significant pseudotranslation is detected.*

¹Intensities estimated from amplitudes.

²Theoretical values of $\langle |L| \rangle$, $\langle L^2 \rangle$ for acentric reflections are 0.5, 0.333 respectively for untwinned datasets, and 0.375, 0.2 for perfectly twinned datasets.

5 Model quality i

5.1 Standard geometry i

Bond lengths and bond angles in the following residue types are not validated in this section: PEG, CL, PLP, PGE, MG

The Z score for a bond length (or angle) is the number of standard deviations the observed value is removed from the expected value. A bond length (or angle) with $|Z| > 5$ is considered an outlier worth inspection. RMSZ is the root-mean-square of all Z scores of the bond lengths (or angles).

Mol	Chain	Bond lengths		Bond angles	
		RMSZ	# Z >5	RMSZ	# Z >5
1	A	0.63	0/3006	1.20	21/4063 (0.5%)
1	B	0.63	0/2950	1.24	20/3990 (0.5%)
All	All	0.63	0/5956	1.22	41/8053 (0.5%)

There are no bond length outliers.

All (41) bond angle outliers are listed below:

Mol	Chain	Res	Type	Atoms	Z	Observed(°)	Ideal(°)
1	B	42	ARG	NE-CZ-NH1	-15.91	112.35	120.30
1	B	42	ARG	NE-CZ-NH2	14.73	127.67	120.30
1	A	350	ARG	NE-CZ-NH1	10.64	125.62	120.30
1	A	248	ARG	NE-CZ-NH2	-10.16	115.22	120.30
1	B	58	ARG	NE-CZ-NH1	10.10	125.35	120.30
1	B	248	ARG	NE-CZ-NH2	-9.41	115.59	120.30
1	A	350	ARG	NE-CZ-NH2	-9.09	115.75	120.30
1	B	233	ASP	CB-CG-OD2	-8.25	110.88	118.30
1	B	248	ARG	NE-CZ-NH1	8.20	124.40	120.30
1	A	191	TYR	CG-CD1-CE1	7.33	127.16	121.30
1	A	58	ARG	NE-CZ-NH2	6.99	123.79	120.30
1	B	304	ARG	NE-CZ-NH2	-6.94	116.83	120.30
1	A	307	GLU	OE1-CD-OE2	-6.92	115.00	123.30
1	A	350	ARG	CD-NE-CZ	6.79	133.11	123.60
1	B	180	ARG	NE-CZ-NH2	-6.56	117.02	120.30
1	A	304	ARG	NE-CZ-NH2	-6.48	117.06	120.30
1	B	21	ARG	NE-CZ-NH1	6.46	123.53	120.30
1	A	136	PHE	CB-CG-CD2	-6.41	116.31	120.80
1	A	51	GLU	OE1-CD-OE2	-6.35	115.68	123.30
1	A	218	GLU	O-C-N	6.35	132.85	122.70
1	B	210	LYS	CA-CB-CG	6.16	126.96	113.40
1	A	46	TYR	CB-CG-CD1	-6.13	117.32	121.00

Continued on next page...

Continued from previous page...

Mol	Chain	Res	Type	Atoms	Z	Observed(°)	Ideal(°)
1	B	344	ASP	CB-CG-OD2	-6.10	112.81	118.30
1	A	136	PHE	CB-CG-CD1	5.80	124.86	120.80
1	A	294	ARG	NE-CZ-NH2	-5.78	117.41	120.30
1	B	46	TYR	CA-CB-CG	-5.66	102.66	113.40
1	A	51	GLU	CG-CD-OE2	5.65	129.59	118.30
1	A	50[A]	HIS	CA-CB-CG	5.53	123.00	113.60
1	A	50[B]	HIS	CA-CB-CG	5.53	123.00	113.60
1	B	334	ARG	NE-CZ-NH2	-5.48	117.56	120.30
1	A	306	GLU	OE1-CD-OE2	5.42	129.81	123.30
1	B	294	ARG	NE-CZ-NH1	5.39	122.99	120.30
1	B	302[A]	ASN	CA-CB-CG	5.34	125.16	113.40
1	B	302[B]	ASN	CA-CB-CG	5.34	125.16	113.40
1	B	42	ARG	CB-CG-CD	5.31	125.40	111.60
1	B	51	GLU	CG-CD-OE1	5.30	128.91	118.30
1	A	48	GLU	CA-CB-CG	5.16	124.74	113.40
1	A	248	ARG	NH1-CZ-NH2	5.15	125.06	119.40
1	A	252	ASP	CB-CG-OD2	-5.12	113.69	118.30
1	B	257	LEU	CA-CB-CG	5.08	126.98	115.30
1	B	80	PHE	CB-CG-CD2	5.01	124.31	120.80

There are no chirality outliers.

There are no planarity outliers.

5.2 Too-close contacts [\(i\)](#)

In the following table, the Non-H and H(model) columns list the number of non-hydrogen atoms and hydrogen atoms in the chain respectively. The H(added) column lists the number of hydrogen atoms added and optimized by MolProbity. The Clashes column lists the number of clashes within the asymmetric unit, whereas Symm-Clashes lists symmetry-related clashes.

Mol	Chain	Non-H	H(model)	H(added)	Clashes	Symm-Clashes
1	A	2871	0	2827	22	0
1	B	2836	0	2804	18	0
2	A	15	0	6	1	0
2	B	15	0	6	1	0
3	A	2	0	0	0	0
3	B	4	0	0	0	0
4	A	2	0	0	0	0
4	B	2	0	0	1	0
5	A	10	0	14	2	0
6	A	7	0	10	0	0

Continued on next page...

Continued from previous page...

Mol	Chain	Non-H	H(model)	H(added)	Clashes	Symm-Clashes
6	B	7	0	10	0	0
7	A	410	0	0	10	0
7	B	432	0	0	8	0
All	All	6613	0	5677	42	0

The all-atom clashscore is defined as the number of clashes found per 1000 atoms (including hydrogen atoms). The all-atom clashscore for this structure is 4.

All (42) close contacts within the same asymmetric unit are listed below, sorted by their clash magnitude.

Atom-1	Atom-2	Interatomic distance (Å)	Clash overlap (Å)
1:B:302[A]:ASN:HD22	1:B:309:ASN:HD21	1.09	0.97
1:A:14[B]:LEU:HD12	7:A:2023:HOH:O	1.85	0.77
1:B:302[A]:ASN:ND2	1:B:309:ASN:HD21	1.85	0.71
1:B:16[B]:LYS:HD3	7:B:2035:HOH:O	1.94	0.66
1:A:303:LEU:H	1:A:309:ASN:HD21	1.44	0.66
1:A:303:LEU:H	1:A:309:ASN:ND2	1.95	0.65
1:B:179:SER:HB3	1:B:197[B]:ASN:HD21	1.66	0.60
1:A:266[B]:GLN:NE2	7:A:2291:HOH:O	2.34	0.60
1:B:302[A]:ASN:HD22	1:B:309:ASN:ND2	1.91	0.59
1:A:196:LYS:HG2	7:A:2234:HOH:O	2.03	0.57
1:B:108:LYS:HE2	7:B:2168:HOH:O	2.05	0.55
1:B:218:GLU:O	1:B:219:GLN:HB2	2.07	0.54
1:B:266[A]:GLN:HE21	1:B:343:ILE:HG13	1.76	0.51
1:A:306:GLU:HG3	1:A:310:GLN:NE2	2.25	0.51
1:B:288[B]:HIS:CD2	1:B:300:THR:HB	2.46	0.51
1:B:288[B]:HIS:HD2	7:B:2228:HOH:O	1.93	0.50
1:A:83:LEU:HD13	1:A:189[A]:MET:HE2	1.95	0.48
1:A:328:ARG:O	1:A:328:ARG:HG2	2.14	0.47
1:A:276:ASP:O	1:A:280[B]:GLU:HG3	2.14	0.46
1:B:266[A]:GLN:NE2	7:B:2322:HOH:O	2.49	0.46
1:A:200:PRO:HG3	1:A:243:SER:O	2.16	0.46
1:A:123[A]:LYS:NZ	7:A:2171:HOH:O	2.49	0.46
1:A:105[B]:LYS:NZ	7:A:2138:HOH:O	2.50	0.45
1:B:210:LYS:NZ	7:B:2274:HOH:O	2.49	0.45
1:A:196:LYS:NZ	2:A:1361:PLP:O3	2.50	0.44
1:B:195:GLN:HA	1:B:199:GLY:O	2.18	0.44
1:A:83:LEU:HD13	1:A:189[A]:MET:CE	2.48	0.44
1:B:196:LYS:NZ	2:B:1361:PLP:O3	2.50	0.44
1:A:350:ARG:NH1	7:A:2393:HOH:O	2.50	0.44
1:A:123[B]:LYS:NZ	5:A:1366:PGE:O3	2.49	0.43

Continued on next page...

Continued from previous page...

Atom-1	Atom-2	Interatomic distance (Å)	Clash overlap (Å)
1:A:261:GLU:HG3	7:A:2047:HOH:O	2.18	0.43
1:B:257:LEU:HD21	1:B:263:ILE:CD1	2.49	0.43
1:B:42:ARG:HG2	7:B:2075:HOH:O	2.19	0.42
1:A:206:VAL:HG12	1:A:208:VAL:HG13	2.01	0.42
1:A:269[A]:GLU:HG3	7:A:2288:HOH:O	2.19	0.42
1:A:102:TRP:CZ3	1:A:105[B]:LYS:HD2	2.55	0.42
1:A:50[B]:HIS:HD2	7:A:2254:HOH:O	2.03	0.41
1:B:111:LYS:NZ	7:B:2178:HOH:O	2.50	0.41
1:B:257:LEU:HD11	1:B:263:ILE:CD1	2.51	0.41
1:A:315:LYS:NZ	7:A:2362:HOH:O	2.54	0.41
4:B:1366:CL:CL	7:B:2020:HOH:O	2.59	0.40

There are no symmetry-related clashes.

5.3 Torsion angles [i](#)

5.3.1 Protein backbone [i](#)

In the following table, the Percentiles column shows the percent Ramachandran outliers of the chain as a percentile score with respect to all X-ray entries followed by that with respect to entries of similar resolution.

The Analysed column shows the number of residues for which the backbone conformation was analysed, and the total number of residues.

Mol	Chain	Analysed	Favoured	Allowed	Outliers	Percentiles	
1	A	373/361 (103%)	367 (98%)	6 (2%)	0	100	100
1	B	365/361 (101%)	359 (98%)	6 (2%)	0	100	100
All	All	738/722 (102%)	726 (98%)	12 (2%)	0	100	100

There are no Ramachandran outliers to report.

5.3.2 Protein sidechains [i](#)

In the following table, the Percentiles column shows the percent sidechain outliers of the chain as a percentile score with respect to all X-ray entries followed by that with respect to entries of similar resolution.

The Analysed column shows the number of residues for which the sidechain conformation was analysed, and the total number of residues.

Mol	Chain	Analysed	Rotameric	Outliers	Percentiles	
1	A	321/310 (104%)	318 (99%)	3 (1%)	78	53
1	B	317/310 (102%)	316 (100%)	1 (0%)	92	78
All	All	638/620 (103%)	634 (99%)	4 (1%)	84	65

All (4) residues with a non-rotameric sidechain are listed below:

Mol	Chain	Res	Type
1	A	3	GLN
1	A	196	LYS
1	A	328	ARG
1	B	210	LYS

Sometimes sidechains can be flipped to improve hydrogen bonding and reduce clashes. All (10) such sidechains are listed below:

Mol	Chain	Res	Type
1	A	3	GLN
1	A	30	ASN
1	A	68	GLN
1	A	214	ASN
1	A	309	ASN
1	B	33	GLN
1	B	68	GLN
1	B	125	ASN
1	B	282	ASN
1	B	355	GLN

5.3.3 RNA [i](#)

There are no RNA molecules in this entry.

5.4 Non-standard residues in protein, DNA, RNA chains [i](#)

There are no non-standard protein/DNA/RNA residues in this entry.

5.5 Carbohydrates [i](#)

There are no monosaccharides in this entry.

5.6 Ligand geometry

Of 15 ligands modelled in this entry, 10 are monoatomic - leaving 5 for Mogul analysis.

In the following table, the Counts columns list the number of bonds (or angles) for which Mogul statistics could be retrieved, the number of bonds (or angles) that are observed in the model and the number of bonds (or angles) that are defined in the Chemical Component Dictionary. The Link column lists molecule types, if any, to which the group is linked. The Z score for a bond length (or angle) is the number of standard deviations the observed value is removed from the expected value. A bond length (or angle) with $|Z| > 2$ is considered an outlier worth inspection. RMSZ is the root-mean-square of all Z scores of the bond lengths (or angles).

Mol	Type	Chain	Res	Link	Bond lengths			Bond angles		
					Counts	RMSZ	# Z > 2	Counts	RMSZ	# Z > 2
6	PEG	B	1367	-	6,6,6	0.58	0	5,5,5	0.72	0
6	PEG	A	1367	-	6,6,6	0.49	0	5,5,5	1.62	1 (20%)
2	PLP	A	1361	1	15,15,16	1.23	1 (6%)	21,22,23	1.19	3 (14%)
5	PGE	A	1366	-	9,9,9	0.78	0	8,8,8	2.28	2 (25%)
2	PLP	B	1361	1	15,15,16	1.48	4 (26%)	21,22,23	1.39	3 (14%)

In the following table, the Chirals column lists the number of chiral outliers, the number of chiral centers analysed, the number of these observed in the model and the number defined in the Chemical Component Dictionary. Similar counts are reported in the Torsion and Rings columns. '-' means no outliers of that kind were identified.

Mol	Type	Chain	Res	Link	Chirals	Torsions	Rings
6	PEG	B	1367	-	-	1/4/4/4	-
6	PEG	A	1367	-	-	0/4/4/4	-
2	PLP	A	1361	1	-	0/6/6/8	0/1/1/1
5	PGE	A	1366	-	-	6/7/7/7	-
2	PLP	B	1361	1	-	0/6/6/8	0/1/1/1

All (5) bond length outliers are listed below:

Mol	Chain	Res	Type	Atoms	Z	Observed(Å)	Ideal(Å)
2	A	1361	PLP	C3-C2	-3.60	1.37	1.41
2	B	1361	PLP	C3-C2	-2.49	1.38	1.41
2	B	1361	PLP	C4A-C4	2.40	1.56	1.51
2	B	1361	PLP	C6-N1	2.34	1.39	1.34
2	B	1361	PLP	C5A-C5	2.17	1.56	1.50

All (9) bond angle outliers are listed below:

Mol	Chain	Res	Type	Atoms	Z	Observed(°)	Ideal(°)
5	A	1366	PGE	C3-O2-C2	4.79	134.20	113.26
6	A	1367	PEG	C3-O2-C2	3.35	127.92	113.26
5	A	1366	PGE	C5-O3-C4	3.25	127.50	113.26
2	B	1361	PLP	C5-C6-N1	-3.05	118.87	123.83
2	A	1361	PLP	C4A-C4-C5	-2.63	118.23	120.94
2	A	1361	PLP	C5-C6-N1	-2.35	120.02	123.83
2	B	1361	PLP	O3-C3-C4	2.18	123.78	118.10
2	B	1361	PLP	C4A-C4-C3	-2.09	117.03	120.52
2	A	1361	PLP	C6-N1-C2	2.05	122.92	119.20

There are no chirality outliers.

All (7) torsion outliers are listed below:

Mol	Chain	Res	Type	Atoms
5	A	1366	PGE	O1-C1-C2-O2
6	B	1367	PEG	O2-C3-C4-O4
5	A	1366	PGE	O3-C5-C6-O4
5	A	1366	PGE	C4-C3-O2-C2
5	A	1366	PGE	O2-C3-C4-O3
5	A	1366	PGE	C1-C2-O2-C3
5	A	1366	PGE	C6-C5-O3-C4

There are no ring outliers.

3 monomers are involved in 4 short contacts:

Mol	Chain	Res	Type	Clashes	Symm-Clashes
2	A	1361	PLP	1	0
5	A	1366	PGE	2	0
2	B	1361	PLP	1	0

5.7 Other polymers [i](#)

There are no such residues in this entry.

5.8 Polymer linkage issues [i](#)

There are no chain breaks in this entry.

6 Fit of model and data [i](#)

6.1 Protein, DNA and RNA chains [i](#)

In the following table, the column labelled ‘#RSRZ > 2’ contains the number (and percentage) of RSRZ outliers, followed by percent RSRZ outliers for the chain as percentile scores relative to all X-ray entries and entries of similar resolution. The OWAB column contains the minimum, median, 95th percentile and maximum values of the occupancy-weighted average B-factor per residue. The column labelled ‘Q < 0.9’ lists the number of (and percentage) of residues with an average occupancy less than 0.9.

Mol	Chain	Analysed	<RSRZ>	#RSRZ>2	OWAB(Å ²)	Q<0.9
1	A	358/361 (99%)	-0.43	8 (2%) 62 61	9, 14, 31, 55	0
1	B	355/361 (98%)	-0.37	7 (1%) 65 65	9, 13, 32, 64	0
All	All	713/722 (98%)	-0.40	15 (2%) 63 63	9, 13, 31, 64	0

All (15) RSRZ outliers are listed below:

Mol	Chain	Res	Type	RSRZ
1	B	213	LEU	3.5
1	A	214	ASN	3.1
1	B	328	ARG	3.0
1	A	328	ARG	3.0
1	A	219	GLN	2.9
1	B	218	GLU	2.9
1	B	217	VAL	2.7
1	A	217	VAL	2.7
1	B	219	GLN	2.5
1	A	215	THR	2.4
1	A	3	GLN	2.4
1	B	165	ASN	2.2
1	B	211	ASP	2.1
1	A	218	GLU	2.0
1	A	125	ASN	2.0

6.2 Non-standard residues in protein, DNA, RNA chains [i](#)

There are no non-standard protein/DNA/RNA residues in this entry.

6.3 Carbohydrates [i](#)

There are no monosaccharides in this entry.

6.4 Ligands [i](#)

In the following table, the Atoms column lists the number of modelled atoms in the group and the number defined in the chemical component dictionary. The B-factors column lists the minimum, median, 95th percentile and maximum values of B factors of atoms in the group. The column labelled 'Q< 0.9' lists the number of atoms with occupancy less than 0.9.

Mol	Type	Chain	Res	Atoms	RSCC	RSR	B-factors(Å ²)	Q<0.9
5	PGE	A	1366	10/10	0.77	0.16	43,54,58,58	0
6	PEG	A	1367	7/7	0.87	0.09	26,26,41,44	0
3	MG	B	1363	1/1	0.89	0.17	26,26,26,26	1
3	MG	B	1364[A]	1/1	0.91	0.10	26,26,26,26	1
3	MG	B	1364[B]	1/1	0.91	0.10	26,26,26,26	1
6	PEG	B	1367	7/7	0.94	0.06	24,26,34,36	0
2	PLP	A	1361	15/16	0.99	0.04	8,9,12,16	0
2	PLP	B	1361	15/16	0.99	0.04	9,9,12,13	0
4	CL	A	1364	1/1	1.00	0.04	11,11,11,11	0
4	CL	A	1365	1/1	1.00	0.02	18,18,18,18	0
4	CL	B	1365	1/1	1.00	0.04	11,11,11,11	0
4	CL	B	1366	1/1	1.00	0.03	21,21,21,21	0
3	MG	A	1362	1/1	1.00	0.10	16,16,16,16	0
3	MG	A	1363	1/1	1.00	0.08	15,15,15,15	0
3	MG	B	1362	1/1	1.00	0.05	11,11,11,11	1

6.5 Other polymers [i](#)

There are no such residues in this entry.