



Full wwPDB X-ray Structure Validation Report ⓘ

Dec 6, 2023 – 01:43 pm GMT

PDB ID : 2BJ0
Title : Crystal Structure of AChBP from *Bulinus truncatus* reveals the conserved structural scaffold and sites of variation in nicotinic acetylcholine receptors
Authors : Celie, P.H.N.; Klaassen, R.V.; Van Rossum-Fikkert, S.E.; Van Elk, R.; Van Nierop, P.; Smit, A.B.; Sixma, T.K.
Deposited on : 2005-01-27
Resolution : 2.00 Å(reported)

This is a Full wwPDB X-ray Structure Validation Report for a publicly released PDB entry.

We welcome your comments at validation@mail.wwpdb.org

A user guide is available at

<https://www.wwpdb.org/validation/2017/XrayValidationReportHelp>

with specific help available everywhere you see the ⓘ symbol.

The types of validation reports are described at

<http://www.wwpdb.org/validation/2017/FAQs#types>.

The following versions of software and data (see [references ⓘ](#)) were used in the production of this report:

MolProbity : 4.02b-467
Mogul : 1.8.4, CSD as541be (2020)
Xtriage (Phenix) : 1.13
EDS : 2.36
Percentile statistics : 20191225.v01 (using entries in the PDB archive December 25th 2019)
Refmac : 5.8.0158
CCP4 : 7.0.044 (Gargrove)
Ideal geometry (proteins) : Engh & Huber (2001)
Ideal geometry (DNA, RNA) : Parkinson et al. (1996)
Validation Pipeline (wwPDB-VP) : 2.36

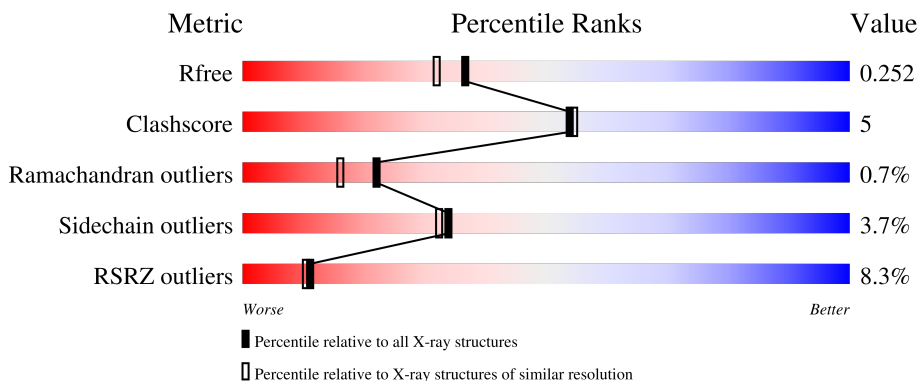
1 Overall quality at a glance

The following experimental techniques were used to determine the structure:

X-RAY DIFFRACTION

The reported resolution of this entry is 2.00 Å.

Percentile scores (ranging between 0-100) for global validation metrics of the entry are shown in the following graphic. The table shows the number of entries on which the scores are based.



Metric	Whole archive (#Entries)	Similar resolution (#Entries, resolution range(Å))
R_{free}	130704	8085 (2.00-2.00)
Clashscore	141614	9178 (2.00-2.00)
Ramachandran outliers	138981	9054 (2.00-2.00)
Sidechain outliers	138945	9053 (2.00-2.00)
RSRZ outliers	127900	7900 (2.00-2.00)

The table below summarises the geometric issues observed across the polymeric chains and their fit to the electron density. The red, orange, yellow and green segments of the lower bar indicate the fraction of residues that contain outliers for ≥ 3 , 2, 1 and 0 types of geometric quality criteria respectively. A grey segment represents the fraction of residues that are not modelled. The numeric value for each fraction is indicated below the corresponding segment, with a dot representing fractions $\leq 5\%$. The upper red bar (where present) indicates the fraction of residues that have poor fit to the electron density. The numeric value is given above the bar.

Mol	Chain	Length	Quality of chain
1	A	203	 8% 84% 15%
1	B	203	 6% 94% 6%
1	C	203	 13% 83% 15% .
1	D	203	 6% 83% 14% .
1	E	203	 7% 83% 16% .

2 Entry composition [i](#)

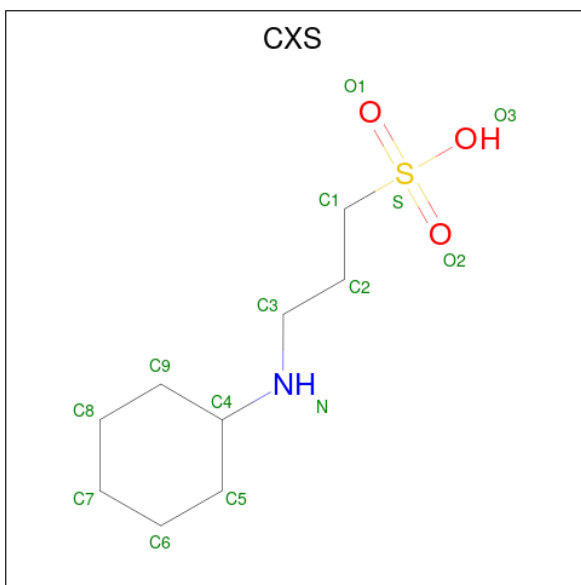
There are 3 unique types of molecules in this entry. The entry contains 8566 atoms, of which 0 are hydrogens and 0 are deuteriums.

In the tables below, the ZeroOcc column contains the number of atoms modelled with zero occupancy, the AltConf column contains the number of residues with at least one atom in alternate conformation and the Trace column contains the number of residues modelled with at most 2 atoms.

- Molecule 1 is a protein called ACETYLCHOLINE-BINDING PROTEIN.

Mol	Chain	Residues	Atoms					ZeroOcc	AltConf	Trace
			Total	C	N	O	S			
1	A	203	Total 1610	C 1025	N 263	O 315	S 7	0	0	0
1	B	203	Total 1610	C 1025	N 263	O 315	S 7	0	0	0
1	C	203	Total 1622	C 1034	N 264	O 317	S 7	0	1	0
1	D	203	Total 1622	C 1034	N 264	O 317	S 7	0	1	0
1	E	203	Total 1622	C 1034	N 264	O 317	S 7	0	1	0

- Molecule 2 is 3-CYCLOHEXYL-1-PROPYLSULFONIC ACID (three-letter code: CXS) (formula: C₉H₁₉NO₃S).



Mol	Chain	Residues	Atoms					ZeroOcc	AltConf
			Total	C	N	O	S		
2	A	1	Total 14	C 9	N 1	O 3	S 1	0	0

Continued on next page...

Continued from previous page...

Mol	Chain	Residues	Atoms					ZeroOcc	AltConf
2	B	1	Total	C	N	O	S	0	0
			14	9	1	3	1		
2	C	1	Total	C	N	O	S	0	0
			14	9	1	3	1		
2	D	1	Total	C	N	O	S	0	0
			14	9	1	3	1		

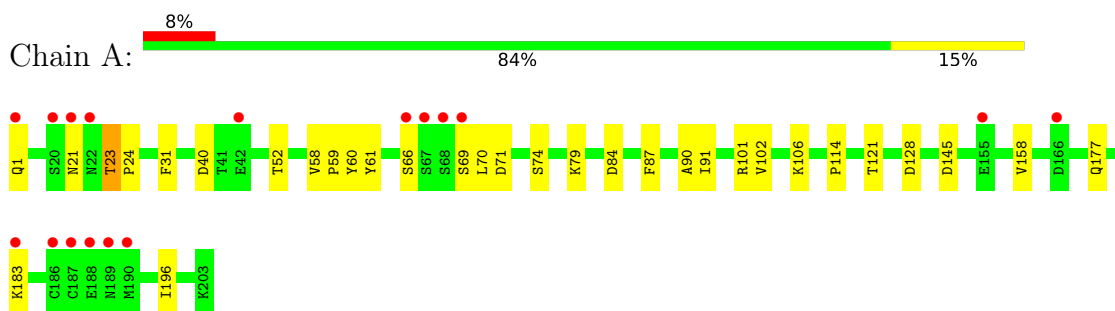
- Molecule 3 is water.

Mol	Chain	Residues	Atoms		ZeroOcc	AltConf
3	A	79	Total	O	0	0
			79	79		
3	B	96	Total	O	0	0
			96	96		
3	C	95	Total	O	0	0
			95	95		
3	D	87	Total	O	0	0
			87	87		
3	E	67	Total	O	0	0
			67	67		

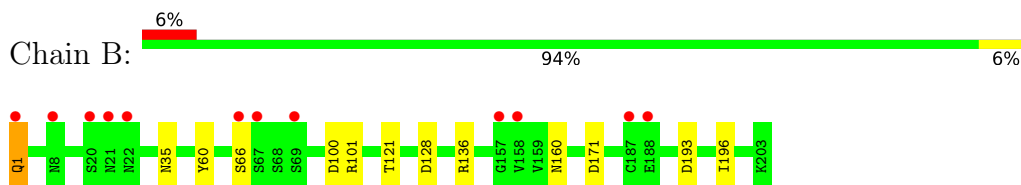
3 Residue-property plots [i](#)

These plots are drawn for all protein, RNA, DNA and oligosaccharide chains in the entry. The first graphic for a chain summarises the proportions of the various outlier classes displayed in the second graphic. The second graphic shows the sequence view annotated by issues in geometry and electron density. Residues are color-coded according to the number of geometric quality criteria for which they contain at least one outlier: green = 0, yellow = 1, orange = 2 and red = 3 or more. A red dot above a residue indicates a poor fit to the electron density ($RSRZ > 2$). Stretches of 2 or more consecutive residues without any outlier are shown as a green connector. Residues present in the sample, but not in the model, are shown in grey.

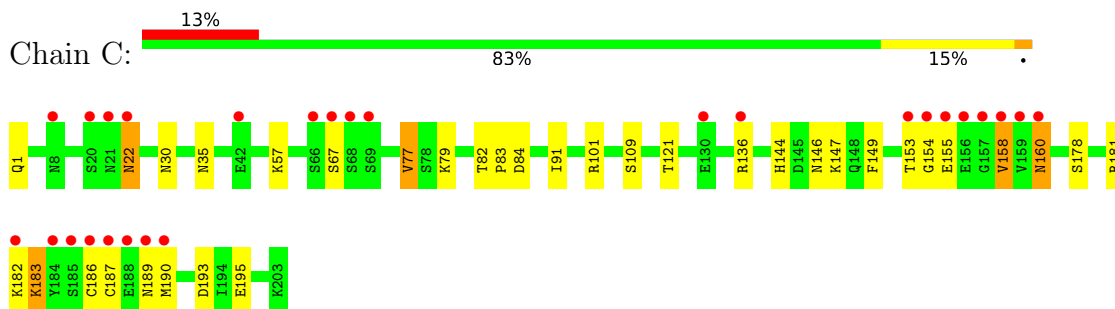
- Molecule 1: ACETYLCHOLINE-BINDING PROTEIN



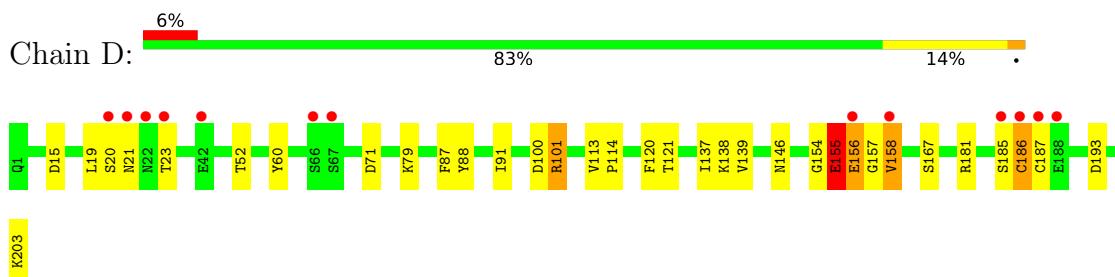
- Molecule 1: ACETYLCHOLINE-BINDING PROTEIN



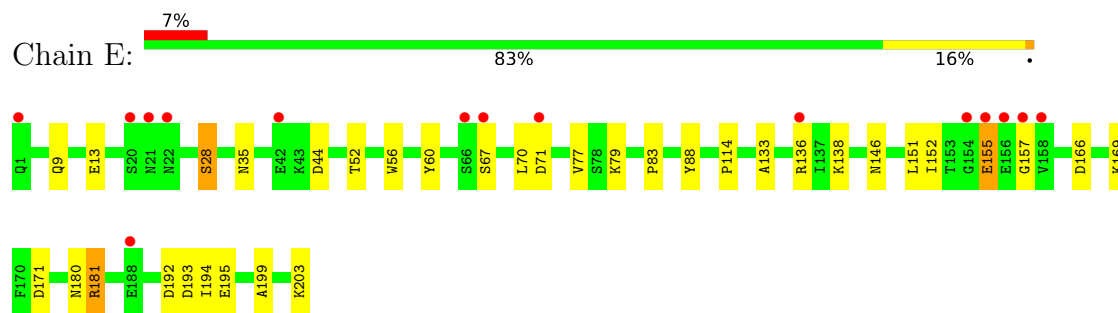
- Molecule 1: ACETYLCHOLINE-BINDING PROTEIN



- Molecule 1: ACETYLCHOLINE-BINDING PROTEIN



● Molecule 1: ACETYLCHOLINE-BINDING PROTEIN



4 Data and refinement statistics

Property	Value	Source
Space group	C 2 2 21	Depositor
Cell constants a, b, c, α , β , γ	76.94Å 219.02Å 166.97Å 90.00° 90.00° 90.00°	Depositor
Resolution (Å)	12.00 – 2.00 12.00 – 2.00	Depositor EDS
% Data completeness (in resolution range)	97.7 (12.00-2.00) 97.7 (12.00-2.00)	Depositor EDS
R_{merge}	0.13	Depositor
R_{sym}	(Not available)	Depositor
$\langle I/\sigma(I) \rangle$ ¹	1.88 (at 2.00Å)	Xtrriage
Refinement program	REFMAC 5.2.0000	Depositor
R, R_{free}	0.210 , 0.249 0.211 , 0.252	Depositor DCC
R_{free} test set	4645 reflections (4.99%)	wwPDB-VP
Wilson B-factor (Å ²)	29.5	Xtrriage
Anisotropy	0.205	Xtrriage
Bulk solvent k_{sol} (e/Å ³), B_{sol} (Å ²)	0.43 , 57.7	EDS
L-test for twinning ²	$\langle L \rangle = 0.50$, $\langle L^2 \rangle = 0.33$	Xtrriage
Estimated twinning fraction	No twinning to report.	Xtrriage
F_o, F_c correlation	0.95	EDS
Total number of atoms	8566	wwPDB-VP
Average B, all atoms (Å ²)	34.0	wwPDB-VP

Xtrriage's analysis on translational NCS is as follows: *The largest off-origin peak in the Patterson function is 4.01% of the height of the origin peak. No significant pseudotranslation is detected.*

¹Intensities estimated from amplitudes.

²Theoretical values of $\langle |L| \rangle$, $\langle L^2 \rangle$ for acentric reflections are 0.5, 0.333 respectively for untwinned datasets, and 0.375, 0.2 for perfectly twinned datasets.

5 Model quality i

5.1 Standard geometry i

Bond lengths and bond angles in the following residue types are not validated in this section: CXS

The Z score for a bond length (or angle) is the number of standard deviations the observed value is removed from the expected value. A bond length (or angle) with $|Z| > 5$ is considered an outlier worth inspection. RMSZ is the root-mean-square of all Z scores of the bond lengths (or angles).

Mol	Chain	Bond lengths		Bond angles	
		RMSZ	# $ Z > 5$	RMSZ	# $ Z > 5$
1	A	0.63	0/1644	0.86	5/2239 (0.2%)
1	B	0.66	0/1644	0.89	5/2239 (0.2%)
1	C	0.64	0/1657	0.83	2/2257 (0.1%)
1	D	0.66	0/1657	0.89	4/2257 (0.2%)
1	E	0.76	1/1657 (0.1%)	0.87	5/2257 (0.2%)
All	All	0.67	1/8259 (0.0%)	0.87	21/11249 (0.2%)

Chiral center outliers are detected by calculating the chiral volume of a chiral center and verifying if the center is modelled as a planar moiety or with the opposite hand. A planarity outlier is detected by checking planarity of atoms in a peptide group, atoms in a mainchain group or atoms of a sidechain that are expected to be planar.

Mol	Chain	#Chirality outliers	#Planarity outliers
1	D	0	1

All (1) bond length outliers are listed below:

Mol	Chain	Res	Type	Atoms	Z	Observed(Å)	Ideal(Å)
1	E	157	GLY	C-N	-17.14	0.94	1.34

All (21) bond angle outliers are listed below:

Mol	Chain	Res	Type	Atoms	Z	Observed($^{\circ}$)	Ideal($^{\circ}$)
1	B	100	ASP	CB-CG-OD2	7.22	124.80	118.30
1	B	101	ARG	NE-CZ-NH2	-6.56	117.02	120.30
1	B	128	ASP	CB-CG-OD2	6.27	123.94	118.30
1	E	166	ASP	CB-CG-OD2	6.22	123.90	118.30
1	B	193	ASP	CB-CG-OD2	6.00	123.70	118.30
1	D	101	ARG	NE-CZ-NH2	-5.97	117.31	120.30
1	E	193	ASP	CB-CG-OD2	5.75	123.47	118.30

Continued on next page...

Continued from previous page...

Mol	Chain	Res	Type	Atoms	Z	Observed(°)	Ideal(°)
1	A	40	ASP	CB-CG-OD2	5.57	123.31	118.30
1	A	128	ASP	CB-CG-OD2	5.52	123.27	118.30
1	C	101	ARG	NE-CZ-NH2	-5.43	117.58	120.30
1	D	15	ASP	CB-CG-OD2	5.37	123.14	118.30
1	E	157	GLY	O-C-N	5.30	131.18	122.70
1	E	44	ASP	CB-CG-OD2	5.24	123.01	118.30
1	C	193	ASP	CB-CG-OD2	5.20	122.98	118.30
1	E	71	ASP	CB-CG-OD2	5.12	122.91	118.30
1	B	171	ASP	CB-CG-OD2	5.11	122.90	118.30
1	D	100	ASP	CB-CG-OD2	5.09	122.88	118.30
1	A	145	ASP	CB-CG-OD2	5.06	122.86	118.30
1	A	84	ASP	CB-CG-OD2	5.04	122.83	118.30
1	D	71	ASP	CB-CG-OD2	5.02	122.82	118.30
1	A	71	ASP	CB-CG-OD2	5.01	122.81	118.30

There are no chirality outliers.

All (1) planarity outliers are listed below:

Mol	Chain	Res	Type	Group
1	D	186	CYS	Peptide

5.2 Too-close contacts [i](#)

In the following table, the Non-H and H(model) columns list the number of non-hydrogen atoms and hydrogen atoms in the chain respectively. The H(added) column lists the number of hydrogen atoms added and optimized by MolProbity. The Clashes column lists the number of clashes within the asymmetric unit, whereas Symm-Clashes lists symmetry-related clashes.

Mol	Chain	Non-H	H(model)	H(added)	Clashes	Symm-Clashes
1	A	1610	0	1591	15	0
1	B	1610	0	1591	6	0
1	C	1622	0	1599	24	0
1	D	1622	0	1599	25	0
1	E	1622	0	1598	18	0
2	A	14	0	18	0	0
2	B	14	0	18	2	0
2	C	14	0	18	3	0
2	D	14	0	18	1	0
3	A	79	0	0	1	0
3	B	96	0	0	2	0
3	C	95	0	0	5	0

Continued on next page...

Continued from previous page...

Mol	Chain	Non-H	H(model)	H(added)	Clashes	Symm-Clashes
3	D	87	0	0	9	0
3	E	67	0	0	1	0
All	All	8566	0	8050	86	0

The all-atom clashscore is defined as the number of clashes found per 1000 atoms (including hydrogen atoms). The all-atom clashscore for this structure is 5.

All (86) close contacts within the same asymmetric unit are listed below, sorted by their clash magnitude.

Atom-1	Atom-2	Interatomic distance (Å)	Clash overlap (Å)
1:D:146:ASN:ND2	1:D:181:ARG:HD3	1.92	0.84
1:C:136:ARG:HD3	1:C:195:GLU:OE2	1.79	0.82
2:D:1204:CXS:H31	3:D:2036:HOH:O	1.78	0.82
1:E:88[B]:TYR:HD2	1:E:138:LYS:HE2	1.48	0.78
1:C:160:ASN:HA	3:C:2079:HOH:O	1.87	0.74
1:C:186:CYS:SG	2:C:1204:CXS:H51	2.28	0.73
1:B:121:THR:HG21	1:C:35:ASN:HD21	1.55	0.71
1:D:155:GLU:OE2	3:D:2069:HOH:O	2.07	0.71
1:D:146:ASN:HD22	1:D:181:ARG:HD3	1.55	0.70
1:B:1:GLN:N	3:B:2001:HOH:O	2.24	0.69
1:D:158:VAL:HG23	3:D:2068:HOH:O	1.94	0.67
1:E:136:ARG:HD3	1:E:195:GLU:OE2	1.95	0.66
1:E:88[B]:TYR:CD2	1:E:138:LYS:HE2	2.30	0.65
1:C:187:CYS:HB3	3:C:2093:HOH:O	1.96	0.65
1:C:30:ASN:HB2	1:C:154:GLY:HA3	1.79	0.64
1:D:19:LEU:HD12	1:E:70:LEU:HD21	1.80	0.64
1:D:154:GLY:O	1:D:156:GLU:N	2.28	0.63
1:D:101:ARG:NH2	3:D:2049:HOH:O	2.31	0.61
1:D:121:THR:HG21	1:E:35:ASN:HD21	1.65	0.60
1:D:158:VAL:CG2	3:D:2068:HOH:O	2.51	0.58
1:E:180:ASN:HB2	3:E:2058:HOH:O	2.03	0.58
1:A:101:ARG:NH2	3:A:2047:HOH:O	2.36	0.58
1:C:136:ARG:CD	1:C:195:GLU:OE2	2.50	0.57
1:E:88[B]:TYR:HD2	1:E:138:LYS:CE	2.17	0.57
1:C:144:HIS:HE1	3:D:2030:HOH:O	1.89	0.56
1:D:88[A]:TYR:CD2	1:D:138:LYS:HE2	2.40	0.56
1:C:91:ILE:HG21	1:C:121:THR:HG23	1.90	0.53
2:C:1204:CXS:H81	1:D:113:VAL:HG23	1.88	0.53
1:A:52:THR:O	1:A:114:PRO:HD2	2.09	0.53
1:A:21:ASN:HD22	1:A:23:THR:HG23	1.73	0.53
1:C:186:CYS:HB3	2:C:1204:CXS:O1	2.09	0.52

Continued on next page...

Continued from previous page...

Atom-1	Atom-2	Interatomic distance (Å)	Clash overlap (Å)
1:D:88[A]:TYR:HD2	1:D:138:LYS:HE2	1.76	0.51
1:C:84:ASP:OD1	1:C:144:HIS:HD2	1.93	0.51
1:D:146:ASN:ND2	1:D:181:ARG:CD	2.72	0.51
1:C:158:VAL:HG22	3:C:2077:HOH:O	2.10	0.51
2:B:1204:CXS:H4	2:B:1204:CXS:H11	1.92	0.50
1:B:136:ARG:HD3	3:B:2096:HOH:O	2.11	0.50
1:D:88[A]:TYR:HD2	1:D:138:LYS:CE	2.25	0.50
1:E:136:ARG:CD	1:E:195:GLU:OE2	2.60	0.49
1:C:1:GLN:N	3:C:2001:HOH:O	2.34	0.49
1:D:91:ILE:HG21	1:D:121:THR:HG23	1.94	0.49
1:B:136:ARG:HA	1:B:196:ILE:O	2.13	0.48
1:A:158:VAL:HG13	1:A:177:GLN:H	1.79	0.47
1:D:87:PHE:CD1	1:D:139:VAL:HG22	2.50	0.47
1:D:187:CYS:HA	3:D:2084:HOH:O	2.14	0.47
1:E:151:LEU:HD13	1:E:194:ILE:HG12	1.96	0.47
1:E:181:ARG:CD	1:E:192:ASP:OD1	2.63	0.46
1:D:120:PHE:CZ	1:D:137:ILE:HG12	2.51	0.46
1:E:52:THR:O	1:E:114:PRO:HD2	2.15	0.46
1:C:147:LYS:HG3	1:C:189:ASN:ND2	2.31	0.46
1:C:160:ASN:C	1:C:160:ASN:HD22	2.19	0.45
1:E:28:SER:HA	1:E:152:ILE:O	2.15	0.45
2:B:1204:CXS:H11	2:B:1204:CXS:C4	2.46	0.45
1:C:189:ASN:HB2	3:C:2093:HOH:O	2.16	0.45
1:A:158:VAL:HG22	1:A:177:GLN:HG2	1.98	0.45
1:C:79:LYS:HA	1:C:79:LYS:HD3	1.81	0.45
1:C:22:ASN:HD22	1:C:22:ASN:HA	1.64	0.44
1:A:121:THR:HG21	1:B:35:ASN:HD21	1.83	0.44
1:D:185:SER:C	1:D:187:CYS:H	2.21	0.44
1:E:181:ARG:HD3	1:E:192:ASP:OD1	2.17	0.44
1:A:91:ILE:HG21	1:A:121:THR:HG23	2.00	0.43
1:D:52:THR:O	1:D:114:PRO:HD2	2.17	0.43
1:D:155:GLU:HG3	1:D:158:VAL:CG2	2.48	0.43
1:B:121:THR:CG2	1:C:35:ASN:HD21	2.27	0.43
1:D:79:LYS:HE3	3:D:2032:HOH:O	2.18	0.43
1:C:183:LYS:N	1:C:190:MET:HE2	2.33	0.43
1:A:70:LEU:O	1:A:106:LYS:HE2	2.19	0.42
1:C:83:PRO:HB3	1:C:149:PHE:CE2	2.54	0.42
1:E:9:GLN:O	1:E:13:GLU:HG3	2.19	0.42
1:A:74:SER:HA	1:A:102:VAL:O	2.19	0.42
1:A:23:THR:HA	1:A:24:PRO:HD3	1.94	0.42
1:C:77:VAL:HG22	1:C:82:THR:HG21	2.01	0.42

Continued on next page...

Continued from previous page...

Atom-1	Atom-2	Interatomic distance (Å)	Clash overlap (Å)
1:A:31:PHE:CG	1:A:196:ILE:HD11	2.54	0.42
1:E:56:TRP:CH2	1:E:83:PRO:HD3	2.55	0.42
1:D:167:SER:O	1:D:203:LYS:HE3	2.19	0.42
1:A:79:LYS:HD3	1:A:79:LYS:HA	1.81	0.42
1:E:133:ALA:O	1:E:199:ALA:HA	2.19	0.42
1:C:57:LYS:HA	1:C:109:SER:HA	2.02	0.42
1:D:193:ASP:OD2	3:D:2087:HOH:O	2.21	0.41
1:C:146:ASN:HA	1:C:149:PHE:O	2.20	0.41
1:D:79:LYS:HD2	1:D:79:LYS:HA	1.63	0.41
1:A:87:PHE:HB2	1:A:90:ALA:HB2	2.02	0.41
1:E:79:LYS:HA	1:E:79:LYS:HD3	1.88	0.41
1:A:21:ASN:HB3	1:A:23:THR:OG1	2.22	0.40
1:A:58:VAL:HG11	1:A:61:TYR:CE1	2.56	0.40
1:E:171:ASP:OD1	1:E:203:LYS:HE2	2.22	0.40

There are no symmetry-related clashes.

5.3 Torsion angles [i](#)

5.3.1 Protein backbone [i](#)

In the following table, the Percentiles column shows the percent Ramachandran outliers of the chain as a percentile score with respect to all X-ray entries followed by that with respect to entries of similar resolution.

The Analysed column shows the number of residues for which the backbone conformation was analysed, and the total number of residues.

Mol	Chain	Analysed	Favoured	Allowed	Outliers	Percentiles	
1	A	201/203 (99%)	197 (98%)	2 (1%)	2 (1%)	15	9
1	B	201/203 (99%)	194 (96%)	7 (4%)	0	100	100
1	C	202/203 (100%)	194 (96%)	7 (4%)	1 (0%)	29	23
1	D	202/203 (100%)	193 (96%)	6 (3%)	3 (2%)	10	4
1	E	202/203 (100%)	195 (96%)	6 (3%)	1 (0%)	29	23
All	All	1008/1015 (99%)	973 (96%)	28 (3%)	7 (1%)	22	16

All (7) Ramachandran outliers are listed below:

Mol	Chain	Res	Type
1	D	155	GLU
1	D	156	GLU
1	E	155	GLU
1	A	66	SER
1	A	23	THR
1	C	158	VAL
1	D	157	GLY

5.3.2 Protein sidechains [i](#)

In the following table, the Percentiles column shows the percent sidechain outliers of the chain as a percentile score with respect to all X-ray entries followed by that with respect to entries of similar resolution.

The Analysed column shows the number of residues for which the sidechain conformation was analysed, and the total number of residues.

Mol	Chain	Analysed	Rotameric	Outliers	Percentiles	
1	A	186/186 (100%)	181 (97%)	5 (3%)	44	46
1	B	186/186 (100%)	182 (98%)	4 (2%)	52	55
1	C	187/186 (100%)	177 (95%)	10 (5%)	22	18
1	D	187/186 (100%)	180 (96%)	7 (4%)	34	32
1	E	187/186 (100%)	179 (96%)	8 (4%)	29	26
All	All	933/930 (100%)	899 (96%)	34 (4%)	34	34

All (34) residues with a non-rotameric sidechain are listed below:

Mol	Chain	Res	Type
1	A	1	GLN
1	A	59	PRO
1	A	60	TYR
1	A	69	SER
1	A	183	LYS
1	B	1	GLN
1	B	60	TYR
1	B	66	SER
1	B	160	ASN
1	C	22	ASN
1	C	67	SER
1	C	77	VAL
1	C	153	THR

Continued on next page...

Continued from previous page...

Mol	Chain	Res	Type
1	C	155	GLU
1	C	160	ASN
1	C	178	SER
1	C	181	ARG
1	C	182	LYS
1	C	183	LYS
1	D	20	SER
1	D	21	ASN
1	D	23	THR
1	D	60	TYR
1	D	155	GLU
1	D	158	VAL
1	D	186	CYS
1	E	28	SER
1	E	60	TYR
1	E	67	SER
1	E	77	VAL
1	E	146	ASN
1	E	155	GLU
1	E	169	LYS
1	E	181	ARG

Sometimes sidechains can be flipped to improve hydrogen bonding and reduce clashes. All (14) such sidechains are listed below:

Mol	Chain	Res	Type
1	A	1	GLN
1	A	21	ASN
1	A	26	ASN
1	A	126	ASN
1	B	26	ASN
1	B	160	ASN
1	C	22	ASN
1	C	35	ASN
1	C	72	GLN
1	C	126	ASN
1	C	144	HIS
1	C	160	ASN
1	D	26	ASN
1	E	160	ASN

5.3.3 RNA [i](#)

There are no RNA molecules in this entry.

5.4 Non-standard residues in protein, DNA, RNA chains [i](#)

There are no non-standard protein/DNA/RNA residues in this entry.

5.5 Carbohydrates [i](#)

There are no monosaccharides in this entry.

5.6 Ligand geometry [i](#)

4 ligands are modelled in this entry.

In the following table, the Counts columns list the number of bonds (or angles) for which Mogul statistics could be retrieved, the number of bonds (or angles) that are observed in the model and the number of bonds (or angles) that are defined in the Chemical Component Dictionary. The Link column lists molecule types, if any, to which the group is linked. The Z score for a bond length (or angle) is the number of standard deviations the observed value is removed from the expected value. A bond length (or angle) with $|Z| > 2$ is considered an outlier worth inspection. RMSZ is the root-mean-square of all Z scores of the bond lengths (or angles).

Mol	Type	Chain	Res	Link	Bond lengths			Bond angles		
					Counts	RMSZ	# Z > 2	Counts	RMSZ	# Z > 2
2	CXS	C	1204	-	14,14,14	1.56	2 (14%)	18,18,18	1.98	4 (22%)
2	CXS	D	1204	-	14,14,14	1.66	2 (14%)	18,18,18	1.63	1 (5%)
2	CXS	A	1204	-	14,14,14	1.59	2 (14%)	18,18,18	1.71	3 (16%)
2	CXS	B	1204	-	14,14,14	1.64	2 (14%)	18,18,18	1.55	3 (16%)

In the following table, the Chirals column lists the number of chiral outliers, the number of chiral centers analysed, the number of these observed in the model and the number defined in the Chemical Component Dictionary. Similar counts are reported in the Torsion and Rings columns. '-' means no outliers of that kind were identified.

Mol	Type	Chain	Res	Link	Chirals	Torsions	Rings
2	CXS	C	1204	-	-	6/8/16/16	0/1/1/1
2	CXS	D	1204	-	-	3/8/16/16	0/1/1/1
2	CXS	A	1204	-	-	1/8/16/16	0/1/1/1
2	CXS	B	1204	-	-	6/8/16/16	0/1/1/1

All (8) bond length outliers are listed below:

Mol	Chain	Res	Type	Atoms	Z	Observed(Å)	Ideal(Å)
2	D	1204	CXS	C1-S	5.03	1.84	1.77
2	B	1204	CXS	C1-S	4.77	1.84	1.77
2	A	1204	CXS	C1-S	4.69	1.84	1.77
2	C	1204	CXS	C1-S	4.63	1.84	1.77
2	A	1204	CXS	C9-C4	2.57	1.58	1.52
2	B	1204	CXS	C9-C4	2.48	1.57	1.52
2	C	1204	CXS	C9-C4	2.30	1.57	1.52
2	D	1204	CXS	C9-C4	2.21	1.57	1.52

All (11) bond angle outliers are listed below:

Mol	Chain	Res	Type	Atoms	Z	Observed(°)	Ideal(°)
2	C	1204	CXS	C3-N-C4	6.15	126.22	114.14
2	D	1204	CXS	C3-N-C4	5.96	125.84	114.14
2	A	1204	CXS	C3-N-C4	5.31	124.58	114.14
2	B	1204	CXS	C2-C1-S	4.10	119.53	113.25
2	C	1204	CXS	O2-S-C1	-3.47	102.74	106.92
2	B	1204	CXS	C3-N-C4	3.44	120.89	114.14
2	A	1204	CXS	O1-S-C1	3.11	110.66	106.92
2	C	1204	CXS	C2-C1-S	2.60	117.24	113.25
2	B	1204	CXS	O2-S-C1	-2.44	103.97	106.92
2	A	1204	CXS	O2-S-C1	-2.18	104.29	106.92
2	C	1204	CXS	C3-C2-C1	-2.05	106.04	112.79

There are no chirality outliers.

All (16) torsion outliers are listed below:

Mol	Chain	Res	Type	Atoms
2	B	1204	CXS	C2-C1-S-O1
2	B	1204	CXS	C2-C1-S-O2
2	B	1204	CXS	S-C1-C2-C3
2	C	1204	CXS	C2-C3-N-C4
2	C	1204	CXS	C9-C4-N-C3
2	D	1204	CXS	S-C1-C2-C3
2	D	1204	CXS	C1-C2-C3-N
2	B	1204	CXS	C1-C2-C3-N
2	B	1204	CXS	C2-C1-S-O3
2	C	1204	CXS	C2-C1-S-O1
2	C	1204	CXS	C2-C1-S-O2
2	C	1204	CXS	C2-C1-S-O3
2	A	1204	CXS	C2-C3-N-C4

Continued on next page...

Continued from previous page...

Mol	Chain	Res	Type	Atoms
2	B	1204	CXS	C2-C3-N-C4
2	D	1204	CXS	C2-C3-N-C4
2	C	1204	CXS	C5-C4-N-C3

There are no ring outliers.

3 monomers are involved in 6 short contacts:

Mol	Chain	Res	Type	Clashes	Symm-Clashes
2	C	1204	CXS	3	0
2	D	1204	CXS	1	0
2	B	1204	CXS	2	0

5.7 Other polymers [i](#)

There are no such residues in this entry.

5.8 Polymer linkage issues [i](#)

The following chains have linkage breaks:

Mol	Chain	Number of breaks
1	E	1

All chain breaks are listed below:

Model	Chain	Residue-1	Atom-1	Residue-2	Atom-2	Distance (Å)
1	E	157:GLY	C	158:VAL	N	0.94

6 Fit of model and data

6.1 Protein, DNA and RNA chains

In the following table, the column labelled ‘#RSRZ > 2’ contains the number (and percentage) of RSRZ outliers, followed by percent RSRZ outliers for the chain as percentile scores relative to all X-ray entries and entries of similar resolution. The OWAB column contains the minimum, median, 95th percentile and maximum values of the occupancy-weighted average B-factor per residue. The column labelled ‘Q < 0.9’ lists the number of (and percentage) of residues with an average occupancy less than 0.9.

Mol	Chain	Analysed	<RSRZ>	#RSRZ>2	OWAB(Å ²)	Q<0.9
1	A	203/203 (100%)	0.19	17 (8%) 11 10	22, 32, 56, 63	0
1	B	203/203 (100%)	0.03	12 (5%) 22 21	22, 29, 51, 57	0
1	C	203/203 (100%)	0.41	27 (13%) 3 2	21, 32, 63, 75	0
1	D	203/203 (100%)	0.22	13 (6%) 19 18	19, 31, 53, 62	0
1	E	203/203 (100%)	0.18	15 (7%) 14 13	22, 31, 52, 61	0
All	All	1015/1015 (100%)	0.21	84 (8%) 11 10	19, 31, 55, 75	0

All (84) RSRZ outliers are listed below:

Mol	Chain	Res	Type	RSRZ
1	C	154	GLY	10.1
1	E	155	GLU	6.6
1	C	186	CYS	6.4
1	E	158	VAL	6.3
1	E	156	GLU	6.0
1	A	22	ASN	5.9
1	C	187	CYS	5.7
1	A	21	ASN	5.6
1	D	186	CYS	5.0
1	C	189	ASN	5.0
1	C	188	GLU	4.9
1	C	155	GLU	4.8
1	E	21	ASN	4.8
1	E	22	ASN	4.8
1	D	67	SER	4.7
1	E	67	SER	4.7
1	A	67	SER	4.7
1	C	185	SER	4.7
1	C	159	VAL	4.6
1	A	20	SER	4.6

Continued on next page...

Continued from previous page...

Mol	Chain	Res	Type	RSRZ
1	D	22	ASN	4.6
1	B	21	ASN	4.4
1	E	157	GLY	4.4
1	C	21	ASN	4.3
1	D	66	SER	4.2
1	B	22	ASN	4.1
1	D	187	CYS	4.1
1	C	22	ASN	4.1
1	D	21	ASN	3.9
1	E	154	GLY	3.9
1	C	67	SER	3.7
1	C	66	SER	3.6
1	C	157	GLY	3.6
1	E	66	SER	3.6
1	B	188	GLU	3.4
1	A	66	SER	3.4
1	E	1	GLN	3.3
1	A	190	MET	3.2
1	C	190	MET	3.2
1	A	68	SER	3.2
1	B	66	SER	3.2
1	D	20	SER	3.2
1	C	184	TYR	3.2
1	C	42	GLU	3.0
1	D	188	GLU	3.0
1	C	182	LYS	2.9
1	A	189	ASN	2.9
1	A	186	CYS	2.9
1	D	156	GLU	2.8
1	B	67	SER	2.8
1	E	188	GLU	2.7
1	E	20	SER	2.7
1	C	156	GLU	2.7
1	A	42	GLU	2.6
1	C	158	VAL	2.6
1	A	183	LYS	2.6
1	C	160	ASN	2.6
1	A	188	GLU	2.5
1	B	187	CYS	2.5
1	C	130	GLU	2.5
1	A	155	GLU	2.5
1	D	42	GLU	2.4

Continued on next page...

Continued from previous page...

Mol	Chain	Res	Type	RSRZ
1	D	185	SER	2.4
1	B	157	GLY	2.4
1	C	20	SER	2.4
1	C	68	SER	2.4
1	D	158	VAL	2.3
1	B	8	ASN	2.3
1	A	166	ASP	2.2
1	B	69	SER	2.2
1	C	153	THR	2.2
1	C	69	SER	2.2
1	A	187	CYS	2.1
1	E	136	ARG	2.1
1	A	1	GLN	2.1
1	C	136	ARG	2.1
1	B	1	GLN	2.1
1	D	23	THR	2.1
1	A	69	SER	2.0
1	B	20	SER	2.0
1	C	8	ASN	2.0
1	E	42	GLU	2.0
1	B	158	VAL	2.0
1	E	71	ASP	2.0

6.2 Non-standard residues in protein, DNA, RNA chains [\(i\)](#)

There are no non-standard protein/DNA/RNA residues in this entry.

6.3 Carbohydrates [\(i\)](#)

There are no monosaccharides in this entry.

6.4 Ligands [\(i\)](#)

In the following table, the Atoms column lists the number of modelled atoms in the group and the number defined in the chemical component dictionary. The B-factors column lists the minimum, median, 95th percentile and maximum values of B factors of atoms in the group. The column labelled 'Q< 0.9' lists the number of atoms with occupancy less than 0.9.

Mol	Type	Chain	Res	Atoms	RSCC	RSR	B-factors(\AA^2)	Q<0.9
2	CXS	C	1204	14/14	0.78	0.26	36,39,51,52	14

Continued on next page...

Continued from previous page...

Mol	Type	Chain	Res	Atoms	RSCC	RSR	B-factors(\AA^2)	Q<0.9
2	CXS	D	1204	14/14	0.87	0.17	40,41,54,54	0
2	CXS	B	1204	14/14	0.90	0.15	45,46,55,55	0
2	CXS	A	1204	14/14	0.93	0.13	45,49,61,62	0

6.5 Other polymers [i](#)

There are no such residues in this entry.