



Full wwPDB X-ray Structure Validation Report ⓘ

Nov 3, 2024 – 12:41 am GMT

PDB ID : 2BKT
Title : crystal structure of renin-pf00257567 complex
Authors : Powell, N.A.; Clay, E.H.; Holsworth, D.D.; Edmunds, J.J.; Bryant, J.W.;
Ryan, J.M.; Jalaie, M.; Zhang, E.
Deposited on : 2005-02-18
Resolution : 2.30 Å(reported)

This is a Full wwPDB X-ray Structure Validation Report for a publicly released PDB entry.

We welcome your comments at validation@mail.wwpdb.org

A user guide is available at

<https://www.wwpdb.org/validation/2017/XrayValidationReportHelp>

with specific help available everywhere you see the ⓘ symbol.

The types of validation reports are described at

<http://www.wwpdb.org/validation/2017/FAQs#types>.

The following versions of software and data (see [references ⓘ](#)) were used in the production of this report:

MolProbity : 4.02b-467
Mogul : 1.8.4, CSD as541be (2020)
Xtrriage (Phenix) : 1.13
EDS : 3.0
buster-report : 1.1.7 (2018)
Percentile statistics : 20231227.v01 (using entries in the PDB archive December 27th 2023)
CCP4 : 9.0.003 (Gargrove)
Density-Fitness : 1.0.11
Ideal geometry (proteins) : Engh & Huber (2001)
Ideal geometry (DNA, RNA) : Parkinson et al. (1996)
Validation Pipeline (wwPDB-VP) : 2.39

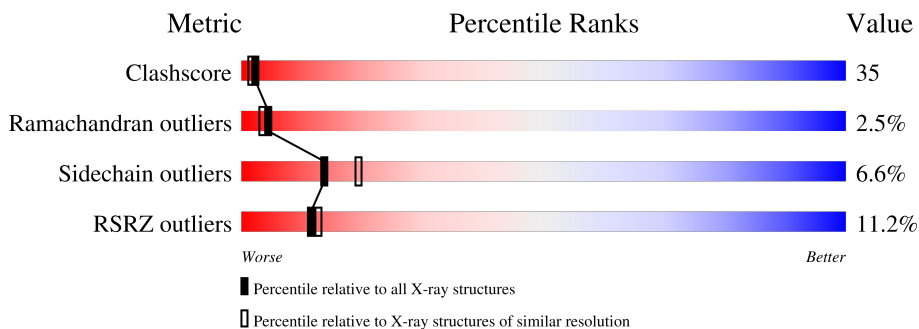
1 Overall quality at a glance

The following experimental techniques were used to determine the structure:

X-RAY DIFFRACTION

The reported resolution of this entry is 2.30 Å.

Percentile scores (ranging between 0-100) for global validation metrics of the entry are shown in the following graphic. The table shows the number of entries on which the scores are based.



Metric	Whole archive (#Entries)	Similar resolution (#Entries, resolution range(Å))
Clashscore	180529	6698 (2.30-2.30)
Ramachandran outliers	177936	6640 (2.30-2.30)
Sidechain outliers	177891	6640 (2.30-2.30)
RSRZ outliers	164620	5963 (2.30-2.30)

The table below summarises the geometric issues observed across the polymeric chains and their fit to the electron density. The red, orange, yellow and green segments of the lower bar indicate the fraction of residues that contain outliers for ≥ 3 , 2, 1 and 0 types of geometric quality criteria respectively. A grey segment represents the fraction of residues that are not modelled. The numeric value for each fraction is indicated below the corresponding segment, with a dot representing fractions $\leq 5\%$. The upper red bar (where present) indicates the fraction of residues that have poor fit to the electron density. The numeric value is given above the bar.

Mol	Chain	Length	Quality of chain
1	A	340	
1	B	340	

2 Entry composition i

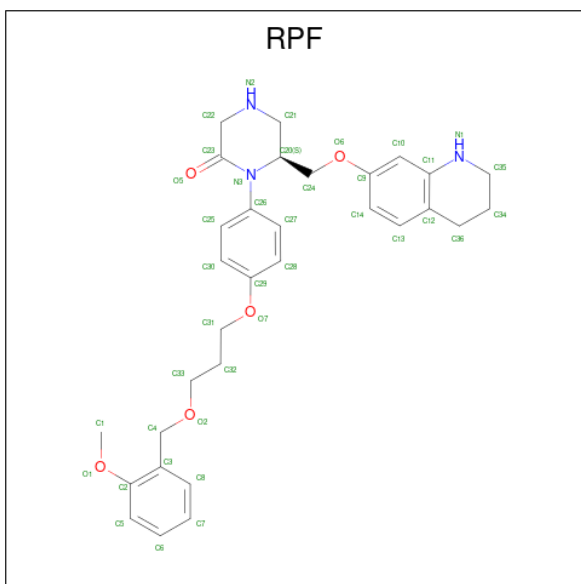
There are 3 unique types of molecules in this entry. The entry contains 5278 atoms, of which 0 are hydrogens and 0 are deuteriums.

In the tables below, the ZeroOcc column contains the number of atoms modelled with zero occupancy, the AltConf column contains the number of residues with at least one atom in alternate conformation and the Trace column contains the number of residues modelled with at most 2 atoms.

- Molecule 1 is a protein called RENIN.

Mol	Chain	Residues	Atoms					ZeroOcc	AltConf	Trace
			Total	C	N	O	S			
1	A	330	Total 2542	C 1626	N 411	O 491	S 14	0	0	1
1	B	330	Total 2542	C 1626	N 411	O 491	S 14	0	0	1

- Molecule 2 is 1-{4-[3-(2-METHOXY-BENZYLOXY)-PROPOXY]-PHENYL}-6-(1,2,3,4-TETRAHYDRO-QUINOLIN-7-YLOXYMETHYL)-PIPERAZIN-2-ONE (three-letter code: RPF) (formula: C₃₁H₃₇N₃O₅).



Mol	Chain	Residues	Atoms				ZeroOcc	AltConf
			Total	C	N	O		
2	A	1	Total 39	C 31	N 3	O 5	0	0
2	B	1	Total 39	C 31	N 3	O 5	0	0

- Molecule 3 is water.

Mol	Chain	Residues	Atoms	ZeroOcc	AltConf
3	A	47	Total O 47 47	0	0
3	B	69	Total O 69 69	0	0



4 Data and refinement statistics i

Property	Value	Source
Space group	P 21 3	Depositor
Cell constants a, b, c, α , β , γ	138.90Å 138.90Å 138.90Å 90.00° 90.00° 90.00°	Depositor
Resolution (Å)	50.00 – 2.30 50.00 – 2.30	Depositor EDS
% Data completeness (in resolution range)	93.3 (50.00-2.30) 93.3 (50.00-2.30)	Depositor EDS
R_{merge}	0.05	Depositor
R_{sym}	(Not available)	Depositor
$\langle I/\sigma(I) \rangle$ ¹	1.54 (at 2.29Å)	Xtrriage
Refinement program	CNS	Depositor
R, R_{free}	0.244 , 0.291 0.248 , (Not available)	Depositor DCC
R_{free} test set	No test flags present.	wwPDB-VP
Wilson B-factor (Å ²)	46.4	Xtrriage
Anisotropy	0.000	Xtrriage
Bulk solvent k_{sol} (e/Å ³), B_{sol} (Å ²)	0.34 , 34.3	EDS
L-test for twinning ²	$\langle L \rangle = 0.42$, $\langle L^2 \rangle = 0.24$	Xtrriage
Estimated twinning fraction	0.074 for l,-k,h	Xtrriage
F_o, F_c correlation	0.92	EDS
Total number of atoms	5278	wwPDB-VP
Average B, all atoms (Å ²)	50.0	wwPDB-VP

Xtrriage's analysis on translational NCS is as follows: *The largest off-origin peak in the Patterson function is 2.55% of the height of the origin peak. No significant pseudotranslation is detected.*

¹Intensities estimated from amplitudes.

²Theoretical values of $\langle |L| \rangle$, $\langle L^2 \rangle$ for acentric reflections are 0.5, 0.333 respectively for untwinned datasets, and 0.375, 0.2 for perfectly twinned datasets.

5 Model quality

5.1 Standard geometry

Bond lengths and bond angles in the following residue types are not validated in this section: RPF

The Z score for a bond length (or angle) is the number of standard deviations the observed value is removed from the expected value. A bond length (or angle) with $|Z| > 5$ is considered an outlier worth inspection. RMSZ is the root-mean-square of all Z scores of the bond lengths (or angles).

Mol	Chain	Bond lengths		Bond angles	
		RMSZ	# Z >5	RMSZ	# Z >5
1	A	0.40	0/2601	0.71	0/3526
1	B	0.42	0/2601	0.74	0/3526
All	All	0.41	0/5202	0.72	0/7052

There are no bond length outliers.

There are no bond angle outliers.

There are no chirality outliers.

There are no planarity outliers.

5.2 Too-close contacts

In the following table, the Non-H and H(model) columns list the number of non-hydrogen atoms and hydrogen atoms in the chain respectively. The H(added) column lists the number of hydrogen atoms added and optimized by MolProbity. The Clashes column lists the number of clashes within the asymmetric unit, whereas Symm-Clashes lists symmetry-related clashes.

Mol	Chain	Non-H	H(model)	H(added)	Clashes	Symm-Clashes
1	A	2542	0	2477	193	0
1	B	2542	0	2477	167	0
2	A	39	0	37	5	0
2	B	39	0	37	11	0
3	A	47	0	0	3	0
3	B	69	0	0	3	0
All	All	5278	0	5028	360	0

The all-atom clashscore is defined as the number of clashes found per 1000 atoms (including hydrogen atoms). The all-atom clashscore for this structure is 35.

All (360) close contacts within the same asymmetric unit are listed below, sorted by their clash

magnitude.

Atom-1	Atom-2	Interatomic distance (Å)	Clash overlap (Å)
1:B:198:MET:HG3	1:B:216:ALA:HB2	1.43	0.96
1:A:158:ASN:ND2	1:A:159:ARG:H	1.65	0.95
1:A:158:ASN:HD22	1:A:159:ARG:H	1.06	0.94
1:A:26:GLN:HE22	1:A:60:ASP:H	1.10	0.91
1:A:273:THR:HG23	1:A:275:ALA:H	1.36	0.90
1:A:87:LEU:HD21	1:A:102:MET:HB3	1.56	0.88
1:B:217:LEU:HD13	1:B:219:ASP:HB2	1.58	0.86
1:B:215:LEU:HB2	1:B:305:THR:HG23	1.60	0.83
1:B:255:GLY:HA3	1:B:280:GLN:HE22	1.45	0.82
1:A:250:VAL:HG11	1:A:258:LEU:HD11	1.61	0.81
1:B:43:SER:HB2	1:B:105:GLU:HB3	1.62	0.81
1:A:251:LYS:NZ	1:A:254:GLU:HB3	1.96	0.81
1:A:158:ASN:HD22	1:A:159:ARG:N	1.79	0.80
1:A:77:ARG:H	1:A:77:ARG:HD2	1.46	0.80
1:A:149:LYS:HE3	1:A:149:LYS:HA	1.64	0.79
1:A:199:LYS:NZ	1:A:264:HIS:HB3	1.97	0.79
1:B:232:ILE:HG13	1:B:295:ALA:HA	1.65	0.79
1:B:195:GLN:HE21	1:B:305:THR:HG21	1.47	0.77
1:B:217:LEU:CD1	1:B:219:ASP:HB2	2.15	0.77
1:A:40:TRP:HH2	1:A:132:ILE:HD12	1.50	0.77
1:A:101:GLN:NE2	1:A:138:ILE:HA	2.00	0.77
1:A:298:ILE:HG22	1:A:303:GLY:HA3	1.68	0.76
1:B:76:LEU:HB2	1:B:83:VAL:CG1	2.16	0.75
1:B:75:THR:C	1:B:76:LEU:HD22	2.06	0.75
1:B:26:GLN:HE22	1:B:60:ASP:H	1.33	0.74
1:A:158:ASN:ND2	1:A:159:ARG:N	2.34	0.74
1:A:274:SER:O	1:A:278:VAL:HG12	1.86	0.74
1:A:211:GLU:O	1:A:212:ASP:HB2	1.88	0.74
1:B:78:TYR:O	1:B:81:GLY:N	2.20	0.74
1:A:76:LEU:HB3	1:A:132:ILE:CD1	2.19	0.73
1:B:215:LEU:CB	1:B:305:THR:HG23	2.19	0.73
1:B:9:ASN:HD21	1:B:12:ASP:H	1.36	0.72
1:B:208:LEU:HD13	1:B:208:LEU:H	1.55	0.72
1:A:234:LYS:O	1:A:237:GLU:HG3	1.89	0.72
1:B:224:TYR:HB3	1:B:292:ALA:O	1.89	0.71
1:B:40:TRP:CZ2	1:B:76:LEU:HD21	2.25	0.71
1:A:76:LEU:HB3	1:A:132:ILE:HD11	1.73	0.70
1:A:99:VAL:HG21	1:A:142:ILE:HG12	1.73	0.70
1:B:176:PRO:HG3	3:B:2038:HOH:O	1.90	0.69
1:B:246:PHE:O	1:B:247:ASP:O	2.11	0.69
1:B:40:TRP:HH2	1:B:132:ILE:HG13	1.58	0.69

Continued on next page...

Continued from previous page...

Atom-1	Atom-2	Interatomic distance (Å)	Clash overlap (Å)
1:B:321:ASP:OD1	1:B:326:ARG:NH1	2.26	0.69
1:A:50:TYR:CZ	1:A:108:GLU:HG3	2.27	0.68
1:A:239:LEU:HD21	1:A:261:ILE:HD11	1.74	0.68
1:A:61:ALA:HB1	1:A:67:TYR:CE1	2.29	0.68
1:B:198:MET:HG2	1:B:265:LEU:CD2	2.24	0.68
1:A:99:VAL:HG11	1:A:141:ASN:HB3	1.77	0.67
1:A:251:LYS:HZ3	1:A:251:LYS:HB2	1.60	0.67
1:B:255:GLY:HA3	1:B:280:GLN:NE2	2.09	0.67
1:B:331:LEU:HD11	3:B:2067:HOH:O	1.94	0.67
1:A:188:LEU:HG	1:A:325:ASN:O	1.96	0.66
1:B:81:GLY:HA2	1:B:110:PRO:HG2	1.78	0.66
1:A:77:ARG:HA	1:A:82:THR:HA	1.79	0.65
1:B:151:ASP:HB2	1:B:323:ARG:HB2	1.77	0.65
1:A:48:ARG:HH12	1:A:58:LEU:HD11	1.61	0.65
1:A:250:VAL:HG22	1:A:251:LYS:HZ2	1.62	0.64
1:A:75:THR:O	1:A:132:ILE:HD13	1.98	0.64
1:B:42:PRO:HG3	2:B:567:RPF:H8	1.79	0.63
1:B:153:PHE:HA	1:B:170:VAL:O	1.97	0.63
1:B:225:ILE:HG13	1:B:311:THR:HB	1.80	0.63
1:B:198:MET:HG2	1:B:265:LEU:HD21	1.80	0.63
1:A:292:ALA:HB1	1:A:311:THR:OG1	1.99	0.63
1:A:199:LYS:HZ3	1:A:264:HIS:HB3	1.62	0.63
1:B:195:GLN:HE21	1:B:305:THR:CG2	2.12	0.62
1:B:208:LEU:O	1:B:209:LEU:HD23	1.99	0.62
1:B:236:MET:HG3	1:B:248:TYR:CG	2.35	0.62
1:A:250:VAL:HG22	1:A:251:LYS:NZ	2.15	0.62
1:B:83:VAL:HA	1:B:108:GLU:O	2.00	0.62
1:A:232:ILE:HG13	1:A:295:ALA:HA	1.80	0.62
1:B:78:TYR:HB3	1:B:81:GLY:HA3	1.81	0.62
1:B:9:ASN:C	1:B:9:ASN:HD22	2.03	0.61
1:A:83:VAL:HG21	2:A:567:RPF:H321	1.82	0.61
1:B:76:LEU:HD11	1:B:132:ILE:HG13	1.83	0.60
1:A:251:LYS:H	1:A:251:LYS:HE3	1.65	0.60
1:B:42:PRO:HB2	1:B:58:LEU:HD23	1.83	0.60
1:A:128:ILE:HD12	1:A:136:THR:HA	1.83	0.60
1:A:189:ILE:HD12	1:A:215:LEU:HG	1.83	0.60
1:B:76:LEU:HB2	1:B:83:VAL:HG13	1.84	0.60
1:A:106:VAL:HG21	2:A:567:RPF:O2	2.01	0.60
1:A:251:LYS:HZ1	1:A:254:GLU:HB3	1.65	0.60
1:A:200:GLY:HA2	1:A:210:CYS:SG	2.42	0.59
1:B:244:ARG:C	1:B:245:LEU:HD12	2.22	0.59

Continued on next page...

Continued from previous page...

Atom-1	Atom-2	Interatomic distance (Å)	Clash overlap (Å)
1:B:235:LEU:HG	1:B:239:LEU:CD2	2.32	0.59
1:A:251:LYS:HZ2	1:A:251:LYS:N	2.01	0.59
1:A:42:PRO:HG2	1:A:57:LYS:O	2.03	0.59
1:A:243:LYS:HB2	1:A:248:TYR:CE2	2.38	0.59
1:A:236:MET:SD	1:A:291:LEU:HD12	2.43	0.58
1:A:47:SER:OG	1:A:49:LEU:HD23	2.03	0.58
1:A:236:MET:O	1:A:241:ALA:HB3	2.04	0.58
1:A:106:VAL:HG11	1:A:109:MET:HB3	1.84	0.58
1:B:9:ASN:ND2	1:B:12:ASP:H	2.02	0.58
1:B:236:MET:HG3	1:B:248:TYR:CD2	2.39	0.58
1:A:140:ASP:CG	1:A:322:ARG:HH22	2.07	0.58
1:A:209:LEU:HD21	1:A:234:LYS:HD3	1.86	0.58
1:A:303:GLY:HA2	1:A:305:THR:HG22	1.86	0.58
1:A:78:TYR:O	1:A:79:SER:C	2.43	0.57
1:A:273:THR:HG23	1:A:275:ALA:N	2.14	0.57
1:B:226:SER:OG	1:B:307:ALA:HB3	2.03	0.57
1:B:78:TYR:O	1:B:80:THR:N	2.38	0.57
1:A:188:LEU:HG	1:A:325:ASN:C	2.25	0.57
1:A:251:LYS:HZ3	1:A:254:GLU:HB3	1.69	0.57
1:A:153:PHE:HA	1:A:170:VAL:O	2.05	0.57
1:B:199:LYS:HB2	1:B:264:HIS:ND1	2.20	0.57
1:A:186:ILE:HG21	1:A:196:ILE:HB	1.87	0.56
1:B:244:ARG:HG3	1:B:245:LEU:H	1.68	0.56
1:A:199:LYS:O	1:A:264:HIS:HB2	2.06	0.56
1:A:208:LEU:O	1:A:209:LEU:HG	2.05	0.56
1:B:77:ARG:H	1:B:77:ARG:HD2	1.70	0.56
1:B:10:TYR:CD2	1:B:118:GLU:HG3	2.40	0.56
1:B:77:ARG:HD2	1:B:77:ARG:N	2.21	0.56
1:B:9:ASN:HD21	1:B:12:ASP:N	2.02	0.55
1:B:133:GLY:O	1:B:134:ARG:CG	2.54	0.55
1:B:202:SER:HB3	1:B:206:SER:O	2.05	0.55
1:A:224:TYR:HB3	1:A:292:ALA:O	2.07	0.55
1:B:76:LEU:HD22	1:B:76:LEU:N	2.20	0.55
1:A:251:LYS:NZ	1:A:251:LYS:HB2	2.22	0.55
1:B:10:TYR:CG	1:B:118:GLU:HG3	2.42	0.55
1:A:251:LYS:H	1:A:251:LYS:CE	2.20	0.54
1:B:101:GLN:NE2	1:B:138:ILE:HA	2.23	0.54
1:B:226:SER:HA	1:B:294:HIS:O	2.07	0.54
1:B:305:THR:HG22	1:B:306:TRP:O	2.08	0.54
1:B:32:PHE:CD1	1:B:169:ILE:HD12	2.43	0.54
1:B:235:LEU:HG	1:B:239:LEU:HD21	1.90	0.54

Continued on next page...

Continued from previous page...

Atom-1	Atom-2	Interatomic distance (Å)	Clash overlap (Å)
1:A:15:TYR:OH	1:A:314:ARG:HD3	2.08	0.54
1:B:188:LEU:HG	1:B:325:ASN:O	2.08	0.54
1:A:76:LEU:O	1:A:76:LEU:HD22	2.07	0.54
1:A:10:TYR:CD2	1:A:118:GLU:HG3	2.42	0.53
1:A:61:ALA:HB1	1:A:67:TYR:CD1	2.44	0.53
1:A:155:PHE:CD1	1:A:220:THR:HG21	2.43	0.53
1:A:89:GLN:HE21	1:A:100:THR:HG22	1.73	0.53
1:B:154:SER:HB3	1:B:317:TYR:CE1	2.43	0.53
1:B:112:LEU:HD23	1:B:113:PRO:CA	2.39	0.53
1:A:48:ARG:NH1	1:A:58:LEU:HD11	2.23	0.53
1:B:198:MET:HG3	1:B:216:ALA:CB	2.28	0.53
1:B:298:ILE:O	1:B:303:GLY:HA3	2.08	0.53
1:B:112:LEU:HD23	1:B:113:PRO:HB3	1.90	0.53
1:A:76:LEU:CD1	1:A:83:VAL:HG13	2.39	0.53
1:A:199:LYS:HZ1	1:A:264:HIS:HB3	1.73	0.53
1:A:209:LEU:CD2	1:A:234:LYS:HD3	2.39	0.53
1:A:290:THR:CG2	1:A:291:LEU:N	2.72	0.53
1:B:252:CYS:HB3	1:B:282:SER:O	2.09	0.53
1:B:32:PHE:CD1	1:B:169:ILE:CD1	2.92	0.53
1:A:111:ALA:O	1:A:115:MET:HB2	2.10	0.52
1:B:208:LEU:CD2	1:B:209:LEU:HG	2.39	0.52
1:A:42:PRO:HD3	1:A:120:ASP:O	2.10	0.52
1:A:292:ALA:HB1	1:A:311:THR:HG1	1.73	0.52
1:B:75:THR:O	1:B:76:LEU:HD13	2.10	0.52
1:A:43:SER:HB2	1:A:105:GLU:HB3	1.92	0.52
1:B:23:THR:OG1	1:B:91:ILE:HD11	2.09	0.52
1:A:151:ASP:CG	1:A:322:ARG:HB2	2.30	0.52
1:B:312:PHE:HE2	1:B:329:PHE:CE2	2.27	0.52
1:B:226:SER:HB2	1:B:296:MET:HB3	1.91	0.52
1:B:199:LYS:HD3	1:B:264:HIS:CE1	2.45	0.51
1:A:76:LEU:HD13	1:A:83:VAL:HG13	1.91	0.51
1:B:122:VAL:HG23	2:B:567:RPF:C1	2.40	0.51
1:B:223:SER:O	1:B:310:ALA:HB3	2.10	0.51
1:A:138:ILE:HG23	1:A:139:PHE:N	2.26	0.51
1:B:3:SER:OG	1:B:95:GLY:O	2.29	0.51
1:A:101:GLN:HE22	1:A:138:ILE:HA	1.75	0.51
1:A:152:VAL:HG12	1:A:321:ASP:HA	1.93	0.51
1:A:77:ARG:H	1:A:77:ARG:CD	2.17	0.51
1:A:151:ASP:OD1	1:A:322:ARG:HB2	2.11	0.51
1:A:229:THR:O	1:A:233:GLU:HG3	2.10	0.51
1:A:273:THR:HG22	1:A:276:ASP:OD1	2.11	0.51

Continued on next page...

Continued from previous page...

Atom-1	Atom-2	Interatomic distance (Å)	Clash overlap (Å)
1:A:290:THR:HG22	1:A:291:LEU:N	2.25	0.51
1:B:38:ASN:HB2	1:B:40:TRP:CZ3	2.46	0.51
1:B:210:CYS:SG	1:B:210:CYS:O	2.69	0.51
1:B:40:TRP:CH2	1:B:76:LEU:HD11	2.46	0.51
1:B:122:VAL:HG23	2:B:567:RPF:H1C1	1.92	0.51
1:B:272:LEU:HD13	1:B:276:ASP:HB3	1.91	0.51
1:A:298:ILE:O	1:A:303:GLY:HA3	2.11	0.50
1:B:56:HIS:CD2	1:B:119:PHE:O	2.64	0.50
1:B:232:ILE:HG13	1:B:295:ALA:CA	2.40	0.50
1:B:251:LYS:HB2	1:B:254:GLU:HB2	1.93	0.50
1:B:133:GLY:O	1:B:134:ARG:HG3	2.11	0.50
1:B:324:ASN:HB2	1:B:326:ARG:HH11	1.76	0.50
1:A:40:TRP:CH2	1:A:132:ILE:HD12	2.39	0.50
1:A:9:ASN:HD22	1:A:10:TYR:N	2.10	0.50
1:B:89:GLN:NE2	3:B:2017:HOH:O	2.45	0.50
1:B:113:PRO:O	1:B:116:LEU:HB2	2.11	0.50
1:A:272:LEU:HD22	1:A:276:ASP:HB3	1.93	0.49
1:B:7:LEU:HD11	1:B:169:ILE:HG13	1.94	0.49
1:B:9:ASN:C	1:B:9:ASN:ND2	2.64	0.49
1:B:8:THR:O	1:B:15:TYR:HA	2.13	0.49
1:B:168:GLN:HE22	1:B:175:ASP:CB	2.25	0.49
1:B:11:MET:O	1:B:12:ASP:HB2	2.12	0.49
1:B:20:GLY:O	1:B:92:ILE:HA	2.12	0.49
1:B:72:THR:O	1:B:86:PHE:HA	2.12	0.49
1:B:139:PHE:CE1	1:B:143:ILE:HD11	2.48	0.49
1:A:9:ASN:HD21	1:A:12:ASP:HA	1.78	0.49
1:A:10:TYR:CE1	1:A:11:MET:HE3	2.48	0.49
1:A:99:VAL:CG1	1:A:141:ASN:HB3	2.41	0.49
1:A:154:SER:HB3	1:A:317:TYR:CE1	2.48	0.49
1:A:85:GLY:HA3	1:A:105:GLU:O	2.13	0.49
1:A:210:CYS:SG	1:A:210:CYS:O	2.71	0.49
1:A:177:GLN:O	1:A:333:ARG:HD2	2.13	0.48
1:B:5:VAL:HG13	1:B:169:ILE:HB	1.95	0.48
1:B:42:PRO:HG3	2:B:567:RPF:C8	2.43	0.48
1:B:5:VAL:CG1	1:B:169:ILE:HB	2.43	0.48
1:A:99:VAL:HG22	1:A:145:GLN:OE1	2.13	0.48
1:A:236:MET:HB3	1:A:241:ALA:HB3	1.94	0.48
1:B:136:THR:HG21	1:B:141:ASN:ND2	2.29	0.48
1:A:186:ILE:HG12	1:A:265:LEU:HB3	1.94	0.48
1:B:67:TYR:CZ	1:B:69:HIS:HA	2.48	0.48
1:B:83:VAL:HG21	2:B:567:RPF:H321	1.96	0.48

Continued on next page...

Continued from previous page...

Atom-1	Atom-2	Interatomic distance (Å)	Clash overlap (Å)
1:B:208:LEU:HD23	1:B:209:LEU:HG	1.94	0.48
1:B:256:PRO:HD3	1:B:280:GLN:NE2	2.29	0.48
1:B:148:LEU:HB3	1:B:172:GLY:HA2	1.96	0.48
1:B:305:THR:HG22	1:B:306:TRP:N	2.29	0.48
1:A:9:ASN:HD21	1:A:12:ASP:H	1.62	0.47
1:A:250:VAL:HG21	1:A:258:LEU:HD21	1.96	0.47
1:B:331:LEU:HD13	1:B:332:ALA:O	2.13	0.47
1:A:200:GLY:HA2	1:A:210:CYS:CB	2.43	0.47
1:B:137:PRO:HD2	1:B:140:ASP:OD2	2.14	0.47
1:A:200:GLY:HA2	1:A:210:CYS:HB3	1.95	0.47
1:B:156:TYR:HB2	1:B:317:TYR:CE2	2.49	0.47
1:B:191:THR:HG23	1:B:325:ASN:OD1	2.14	0.47
1:B:278:VAL:HG22	1:B:291:LEU:CD2	2.44	0.47
1:A:179:TYR:HA	1:A:331:LEU:O	2.14	0.47
1:B:232:ILE:O	1:B:236:MET:HG2	2.15	0.47
1:A:70:ASN:HB3	1:A:87:LEU:O	2.15	0.47
1:A:122:VAL:HG23	2:A:567:RPF:C1	2.45	0.46
1:A:229:THR:HG22	1:A:233:GLU:HG3	1.97	0.46
1:B:292:ALA:HB1	1:B:311:THR:OG1	2.15	0.46
1:A:41:VAL:O	1:A:105:GLU:HA	2.15	0.46
1:A:50:TYR:O	1:A:53:CYS:HB2	2.15	0.46
1:A:201:VAL:HG22	1:A:263:PHE:CD2	2.51	0.46
1:A:48:ARG:HH12	1:A:58:LEU:CD1	2.27	0.46
1:B:51:THR:HA	1:B:54:VAL:HG23	1.98	0.46
1:B:9:ASN:HD22	1:B:10:TYR:N	2.14	0.46
1:B:77:ARG:O	1:B:79:SER:N	2.49	0.46
1:B:198:MET:CE	1:B:263:PHE:HB3	2.46	0.46
1:A:43:SER:CB	1:A:105:GLU:HB3	2.46	0.46
1:B:119:PHE:CE2	2:B:567:RPF:H1C2	2.50	0.45
1:A:223:SER:O	1:A:310:ALA:HB3	2.16	0.45
1:A:87:LEU:HD23	1:A:88:SER:H	1.81	0.45
1:A:291:LEU:C	1:A:293:ILE:H	2.20	0.45
1:A:209:LEU:C	1:A:211:GLU:H	2.19	0.45
1:B:302:THR:O	1:B:305:THR:OG1	2.34	0.45
1:B:189:ILE:HD11	1:B:197:GLN:CB	2.46	0.45
1:B:7:LEU:HD11	1:B:169:ILE:CG1	2.46	0.45
1:B:40:TRP:HH2	1:B:76:LEU:HD11	1.81	0.45
1:B:127:PHE:HB2	1:B:192:GLY:HA2	1.99	0.45
1:A:10:TYR:CG	1:A:118:GLU:HG3	2.52	0.45
1:A:274:SER:HA	1:A:277:TYR:CE2	2.52	0.45
1:B:333:ARG:HH11	1:B:333:ARG:HG2	1.82	0.45

Continued on next page...

Continued from previous page...

Atom-1	Atom-2	Interatomic distance (Å)	Clash overlap (Å)
1:A:106:VAL:CG1	1:A:109:MET:HB3	2.47	0.45
1:A:139:PHE:O	1:A:143:ILE:HG13	2.17	0.44
1:A:186:ILE:HD12	1:A:186:ILE:N	2.33	0.44
1:A:189:ILE:HD11	1:A:196:ILE:C	2.37	0.44
1:A:278:VAL:HG13	1:A:278:VAL:O	2.17	0.44
1:B:256:PRO:HD3	1:B:280:GLN:HE22	1.81	0.44
1:B:278:VAL:HG22	1:B:291:LEU:HD22	1.98	0.44
1:A:303:GLY:HA2	1:A:304:PRO:C	2.37	0.44
1:A:28:PHE:HZ	1:A:59:PHE:HA	1.83	0.44
1:A:278:VAL:HG11	1:A:280:GLN:NE2	2.33	0.44
1:B:78:TYR:C	1:B:81:GLY:H	2.17	0.44
1:A:84:SER:OG	1:A:108:GLU:HB3	2.18	0.44
1:A:165:LEU:HD23	1:A:165:LEU:N	2.32	0.44
1:A:187:ASN:O	1:A:196:ILE:HG22	2.17	0.44
1:A:235:LEU:C	1:A:235:LEU:HD23	2.37	0.44
1:B:28:PHE:HZ	1:B:59:PHE:HA	1.82	0.44
1:B:227:GLY:N	1:B:232:ILE:HD11	2.32	0.44
1:A:30:VAL:HG21	1:A:123:VAL:CG2	2.48	0.44
1:A:150:GLU:HG2	1:A:152:VAL:HG13	1.99	0.44
1:A:9:ASN:HD22	1:A:9:ASN:C	2.19	0.43
1:A:229:THR:O	1:A:233:GLU:CG	2.66	0.43
1:B:111:ALA:HB1	1:B:115:MET:HE2	2.00	0.43
1:A:165:LEU:N	1:A:165:LEU:CD2	2.81	0.43
1:B:49:LEU:HD13	1:B:49:LEU:HA	1.86	0.43
1:A:112:LEU:HA	1:A:113:PRO:HA	1.77	0.43
1:A:236:MET:HE3	1:A:248:TYR:HB2	2.00	0.43
1:B:18:GLU:HB3	1:B:27:THR:HG23	1.99	0.43
1:B:43:SER:CB	1:B:105:GLU:HB3	2.40	0.43
1:B:69:HIS:ND1	1:B:70:ASN:N	2.66	0.43
1:B:91:ILE:HG13	1:B:91:ILE:O	2.19	0.43
1:B:112:LEU:HD23	1:B:113:PRO:CB	2.48	0.43
1:B:76:LEU:HB2	1:B:83:VAL:HG11	1.97	0.43
1:B:106:VAL:HG21	2:B:567:RPF:O2	2.19	0.43
1:A:32:PHE:HB2	1:A:169:ILE:HD11	2.01	0.43
1:A:186:ILE:CG2	1:A:196:ILE:HB	2.48	0.43
1:A:251:LYS:NZ	1:A:251:LYS:CB	2.82	0.43
1:A:255:GLY:N	1:A:256:PRO:CD	2.81	0.43
1:B:112:LEU:HA	1:B:113:PRO:HA	1.73	0.43
1:A:155:PHE:CG	1:A:220:THR:HG21	2.54	0.43
1:A:189:ILE:HB	1:A:190:LYS:H	1.52	0.43
1:A:78:TYR:HE2	1:A:113:PRO:CD	2.32	0.43

Continued on next page...

Continued from previous page...

Atom-1	Atom-2	Interatomic distance (Å)	Clash overlap (Å)
1:A:119:PHE:CE2	2:A:567:RPF:H1C2	2.54	0.43
1:A:128:ILE:N	3:A:2021:HOH:O	2.16	0.43
1:B:128:ILE:HG13	1:B:137:PRO:HD3	2.01	0.43
1:A:40:TRP:CD1	1:A:106:VAL:HG22	2.54	0.43
1:A:87:LEU:HD23	1:A:88:SER:N	2.34	0.43
1:B:117:ALA:HA	2:B:567:RPF:H341	2.01	0.43
1:B:122:VAL:CG2	2:B:567:RPF:H1C1	2.48	0.43
1:B:129:GLU:OE1	1:B:129:GLU:N	2.51	0.43
1:A:30:VAL:HG21	1:A:123:VAL:HG23	2.00	0.43
1:A:34:THR:HG23	1:A:220:THR:OG1	2.18	0.43
1:B:209:LEU:HD11	1:B:235:LEU:HB2	2.01	0.43
1:B:219:ASP:CG	2:B:567:RPF:H2	2.21	0.43
1:A:231:SER:HB3	1:A:306:TRP:CZ2	2.54	0.42
1:A:9:ASN:C	1:A:9:ASN:ND2	2.73	0.42
1:A:189:ILE:CD1	1:A:215:LEU:HG	2.47	0.42
1:A:220:THR:HA	1:A:313:ILE:CD1	2.49	0.42
1:A:252:CYS:HB3	1:A:282:SER:O	2.20	0.42
1:B:245:LEU:HD12	1:B:245:LEU:N	2.34	0.42
1:B:290:THR:CG2	1:B:291:LEU:N	2.82	0.42
1:A:127:PHE:HA	3:A:2021:HOH:O	2.19	0.42
1:B:152:VAL:HG12	1:B:321:ASP:HA	2.02	0.42
1:B:127:PHE:CB	1:B:192:GLY:HA2	2.50	0.42
1:B:154:SER:O	1:B:169:ILE:HA	2.19	0.42
1:A:229:THR:HA	1:A:295:ALA:HB1	2.01	0.42
1:B:40:TRP:O	1:B:121:GLY:HA3	2.20	0.42
1:B:230:SER:O	1:B:234:LYS:HG3	2.18	0.42
1:B:239:LEU:HD11	1:B:261:ILE:HD11	2.01	0.42
1:A:227:GLY:HA2	1:A:306:TRP:HA	2.02	0.42
1:A:239:LEU:CD2	1:A:259:PRO:HG2	2.49	0.42
1:A:261:ILE:HG12	1:A:277:TYR:CE2	2.55	0.42
1:A:298:ILE:HG22	1:A:303:GLY:CA	2.45	0.42
1:A:56:HIS:HE1	1:A:114:PHE:O	2.03	0.42
1:A:207:THR:O	1:A:207:THR:HG22	2.19	0.42
1:A:300:PRO:HG3	1:A:303:GLY:O	2.20	0.42
1:B:111:ALA:HB1	1:B:115:MET:CE	2.50	0.42
1:A:70:ASN:OD1	1:A:87:LEU:HB3	2.20	0.41
1:B:252:CYS:HB2	1:B:284:SER:O	2.20	0.41
1:A:76:LEU:HD11	1:A:83:VAL:HG22	2.03	0.41
1:A:209:LEU:C	1:A:211:GLU:N	2.72	0.41
1:B:21:ILE:CD1	1:B:41:VAL:HG11	2.50	0.41
1:A:132:ILE:C	1:A:134:ARG:H	2.24	0.41

Continued on next page...

Continued from previous page...

Atom-1	Atom-2	Interatomic distance (Å)	Clash overlap (Å)
1:A:29:LYS:O	1:A:119:PHE:HB2	2.21	0.41
1:A:38:ASN:HB2	1:A:40:TRP:CZ3	2.55	0.41
1:A:265:LEU:HA	3:A:2040:HOH:O	2.20	0.41
1:B:35:GLY:HA3	2:B:567:RPF:H222	2.03	0.41
1:B:78:TYR:O	1:B:78:TYR:CD2	2.73	0.41
1:B:109:MET:HA	1:B:110:PRO:HD3	1.81	0.41
1:A:225:ILE:HG13	1:A:311:THR:HB	2.02	0.41
1:B:198:MET:HE1	1:B:263:PHE:HA	2.02	0.41
1:B:288:LEU:HD12	1:B:288:LEU:HA	1.81	0.41
1:A:28:PHE:HZ	1:A:59:PHE:CA	2.34	0.41
1:A:89:GLN:NE2	1:A:100:THR:HG22	2.35	0.41
1:A:154:SER:O	1:A:169:ILE:HA	2.21	0.41
1:A:236:MET:CE	1:A:291:LEU:HD12	2.51	0.41
1:A:243:LYS:HB2	1:A:248:TYR:CD2	2.55	0.41
1:A:9:ASN:HD21	1:A:12:ASP:N	2.17	0.41
1:A:83:VAL:HG21	2:A:567:RPF:C32	2.50	0.41
1:A:294:HIS:CE1	1:A:296:MET:HE1	2.56	0.41
1:B:186:ILE:N	1:B:186:ILE:HD12	2.36	0.41
1:A:50:TYR:OH	1:A:108:GLU:HG3	2.21	0.40
1:A:132:ILE:C	1:A:134:ARG:N	2.74	0.40
1:B:326:ARG:HH11	1:B:326:ARG:HG2	1.87	0.40
1:A:76:LEU:O	1:A:76:LEU:HD13	2.21	0.40
1:A:77:ARG:HD2	1:A:77:ARG:N	2.25	0.40
1:A:78:TYR:O	1:A:78:TYR:CG	2.73	0.40
1:A:205:SER:O	1:A:206:SER:HB3	2.21	0.40
1:A:294:HIS:CD2	1:A:294:HIS:C	2.95	0.40
1:A:186:ILE:HG13	1:A:266:GLY:HA3	2.02	0.40
1:A:194:TRP:CH2	1:A:320:PHE:HB3	2.57	0.40
1:B:16:TYR:CD1	1:B:16:TYR:N	2.89	0.40
1:B:44:SER:OG	1:B:60:ASP:HA	2.21	0.40
1:B:94:VAL:O	1:B:95:GLY:C	2.60	0.40
1:A:47:SER:HG	1:A:49:LEU:HD23	1.85	0.40

There are no symmetry-related clashes.

5.3 Torsion angles [i](#)

5.3.1 Protein backbone [i](#)

In the following table, the Percentiles column shows the percent Ramachandran outliers of the chain as a percentile score with respect to all X-ray entries followed by that with respect to entries

of similar resolution.

The Analysed column shows the number of residues for which the backbone conformation was analysed, and the total number of residues.

Mol	Chain	Analysed	Favoured	Allowed	Outliers	Percentiles	
1	A	326/340 (96%)	289 (89%)	28 (9%)	9 (3%)	4	3
1	B	326/340 (96%)	298 (91%)	21 (6%)	7 (2%)	5	5
All	All	652/680 (96%)	587 (90%)	49 (8%)	16 (2%)	4	3

All (16) Ramachandran outliers are listed below:

Mol	Chain	Res	Type
1	A	80	THR
1	A	189	ILE
1	B	78	TYR
1	B	247	ASP
1	A	204	GLY
1	B	79	SER
1	A	206	SER
1	A	12	ASP
1	A	160	ASP
1	A	292	ALA
1	B	70	ASN
1	A	79	SER
1	B	95	GLY
1	B	146	GLY
1	B	300	PRO
1	A	250	VAL

5.3.2 Protein sidechains [i](#)

In the following table, the Percentiles column shows the percent sidechain outliers of the chain as a percentile score with respect to all X-ray entries followed by that with respect to entries of similar resolution.

The Analysed column shows the number of residues for which the sidechain conformation was analysed, and the total number of residues.

Mol	Chain	Analysed	Rotameric	Outliers	Percentiles	
1	A	280/290 (97%)	257 (92%)	23 (8%)	9	12
1	B	280/290 (97%)	266 (95%)	14 (5%)	20	30
All	All	560/580 (97%)	523 (93%)	37 (7%)	14	19

All (37) residues with a non-rotameric sidechain are listed below:

Mol	Chain	Res	Type
1	A	2	THR
1	A	9	ASN
1	A	40	TRP
1	A	51	THR
1	A	76	LEU
1	A	77	ARG
1	A	83	VAL
1	A	87	LEU
1	A	93	THR
1	A	115	MET
1	A	120	ASP
1	A	149	LYS
1	A	158	ASN
1	A	165	LEU
1	A	171	LEU
1	A	197	GLN
1	A	199	LYS
1	A	215	LEU
1	A	217	LEU
1	A	251	LYS
1	A	294	HIS
1	A	326	ARG
1	A	331	LEU
1	B	2	THR
1	B	9	ASN
1	B	11	MET
1	B	40	TRP
1	B	77	ARG
1	B	112	LEU
1	B	113	PRO
1	B	197	GLN
1	B	208	LEU
1	B	217	LEU
1	B	272	LEU
1	B	288	LEU
1	B	325	ASN
1	B	333	ARG

Sometimes sidechains can be flipped to improve hydrogen bonding and reduce clashes. All (24) such sidechains are listed below:

Mol	Chain	Res	Type
1	A	9	ASN
1	A	26	GLN
1	A	89	GLN
1	A	101	GLN
1	A	141	ASN
1	A	145	GLN
1	A	158	ASN
1	A	168	GLN
1	A	187	ASN
1	A	195	GLN
1	A	197	GLN
1	A	280	GLN
1	A	324	ASN
1	B	9	ASN
1	B	26	GLN
1	B	101	GLN
1	B	141	ASN
1	B	145	GLN
1	B	168	GLN
1	B	178	HIS
1	B	187	ASN
1	B	195	GLN
1	B	197	GLN
1	B	280	GLN

5.3.3 RNA [i](#)

There are no RNA molecules in this entry.

5.4 Non-standard residues in protein, DNA, RNA chains [i](#)

There are no non-standard protein/DNA/RNA residues in this entry.

5.5 Carbohydrates [i](#)

There are no oligosaccharides in this entry.

5.6 Ligand geometry [i](#)

2 ligands are modelled in this entry.

In the following table, the Counts columns list the number of bonds (or angles) for which Mogul statistics could be retrieved, the number of bonds (or angles) that are observed in the model and the number of bonds (or angles) that are defined in the Chemical Component Dictionary. The Link column lists molecule types, if any, to which the group is linked. The Z score for a bond length (or angle) is the number of standard deviations the observed value is removed from the expected value. A bond length (or angle) with $|Z| > 2$ is considered an outlier worth inspection. RMSZ is the root-mean-square of all Z scores of the bond lengths (or angles).

Mol	Type	Chain	Res	Link	Bond lengths			Bond angles		
					Counts	RMSZ	# $ Z > 2$	Counts	RMSZ	# $ Z > 2$
2	RPF	B	567	-	43,43,43	1.37	6 (13%)	49,57,57	1.21	3 (6%)
2	RPF	A	567	-	43,43,43	1.43	7 (16%)	49,57,57	1.21	4 (8%)

In the following table, the Chirals column lists the number of chiral outliers, the number of chiral centers analysed, the number of these observed in the model and the number defined in the Chemical Component Dictionary. Similar counts are reported in the Torsion and Rings columns. '-' means no outliers of that kind were identified.

Mol	Type	Chain	Res	Link	Chirals	Torsions	Rings
2	RPF	B	567	-	-	5/20/41/41	0/5/5/5
2	RPF	A	567	-	-	5/20/41/41	0/5/5/5

All (13) bond length outliers are listed below:

Mol	Chain	Res	Type	Atoms	Z	Observed(Å)	Ideal(Å)
2	B	567	RPF	C11-C12	3.18	1.44	1.40
2	B	567	RPF	C14-C9	2.86	1.44	1.38
2	A	567	RPF	C14-C9	2.66	1.44	1.38
2	A	567	RPF	C21-C20	2.39	1.54	1.52
2	B	567	RPF	C24-C20	2.37	1.57	1.52
2	A	567	RPF	C11-C12	2.31	1.43	1.40
2	A	567	RPF	C27-C26	2.30	1.43	1.39
2	B	567	RPF	C28-C29	2.28	1.43	1.38
2	B	567	RPF	C26-N3	-2.27	1.39	1.43
2	A	567	RPF	C24-C20	2.18	1.57	1.52
2	A	567	RPF	C30-C25	2.17	1.42	1.38
2	B	567	RPF	C21-C20	2.07	1.54	1.52
2	A	567	RPF	C2-C3	2.03	1.43	1.40

All (7) bond angle outliers are listed below:

Mol	Chain	Res	Type	Atoms	Z	Observed(°)	Ideal(°)
2	B	567	RPF	C1-O1-C2	-4.37	110.93	117.53

Continued on next page...

Continued from previous page...

Mol	Chain	Res	Type	Atoms	Z	Observed(°)	Ideal(°)
2	A	567	RPF	C1-O1-C2	-3.88	111.67	117.53
2	A	567	RPF	O1-C2-C3	3.49	120.83	115.97
2	B	567	RPF	O1-C2-C3	3.27	120.52	115.97
2	A	567	RPF	O1-C2-C5	-3.15	118.97	124.37
2	B	567	RPF	O1-C2-C5	-2.87	119.44	124.37
2	A	567	RPF	C11-C10-C9	2.13	121.89	118.01

There are no chirality outliers.

All (10) torsion outliers are listed below:

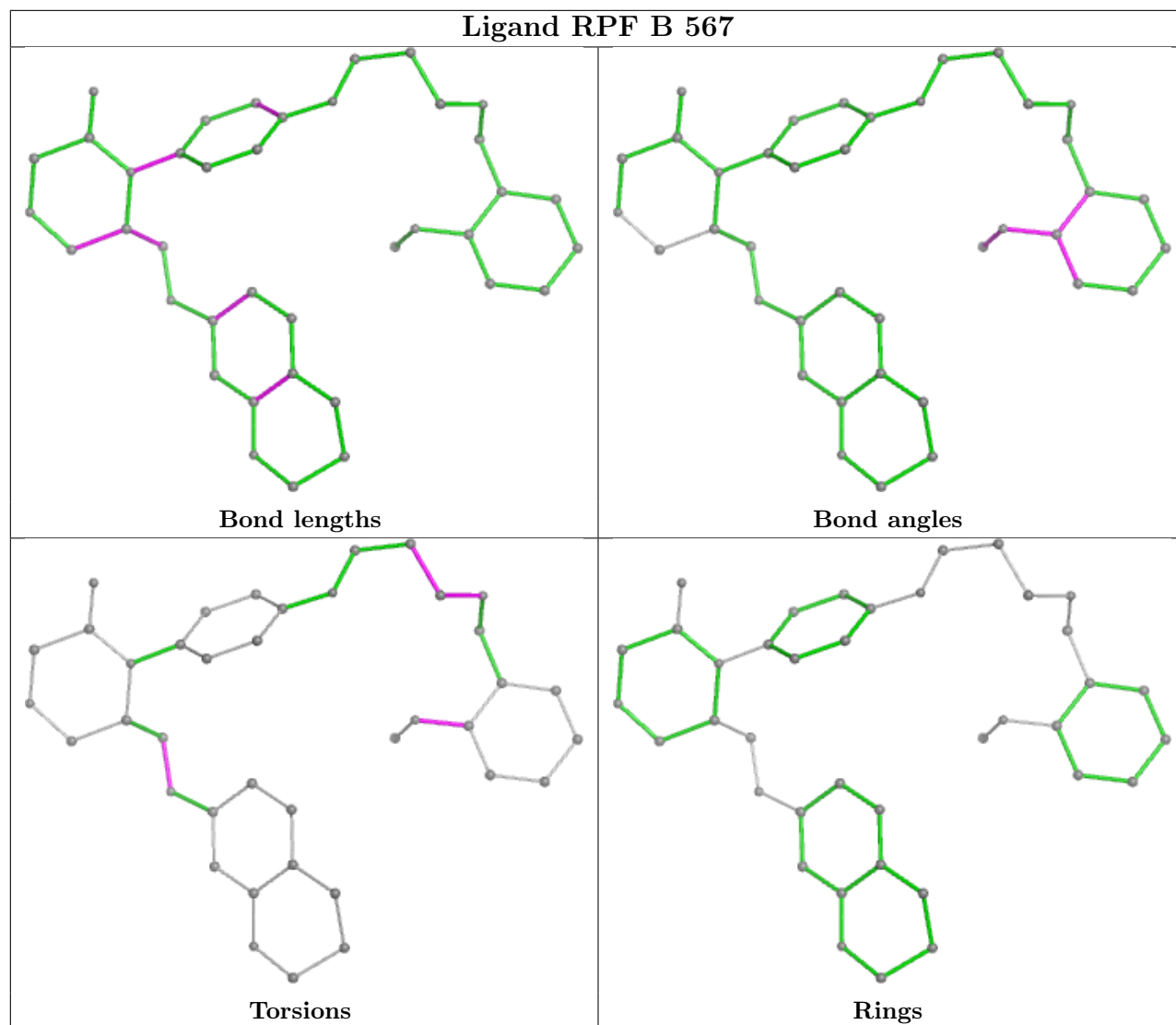
Mol	Chain	Res	Type	Atoms
2	A	567	RPF	C5-C2-O1-C1
2	B	567	RPF	C5-C2-O1-C1
2	A	567	RPF	C3-C2-O1-C1
2	B	567	RPF	C3-C2-O1-C1
2	B	567	RPF	C31-C32-C33-O2
2	A	567	RPF	C20-C24-O6-C9
2	B	567	RPF	C20-C24-O6-C9
2	A	567	RPF	C3-C4-O2-C33
2	B	567	RPF	C32-C33-O2-C4
2	A	567	RPF	C32-C33-O2-C4

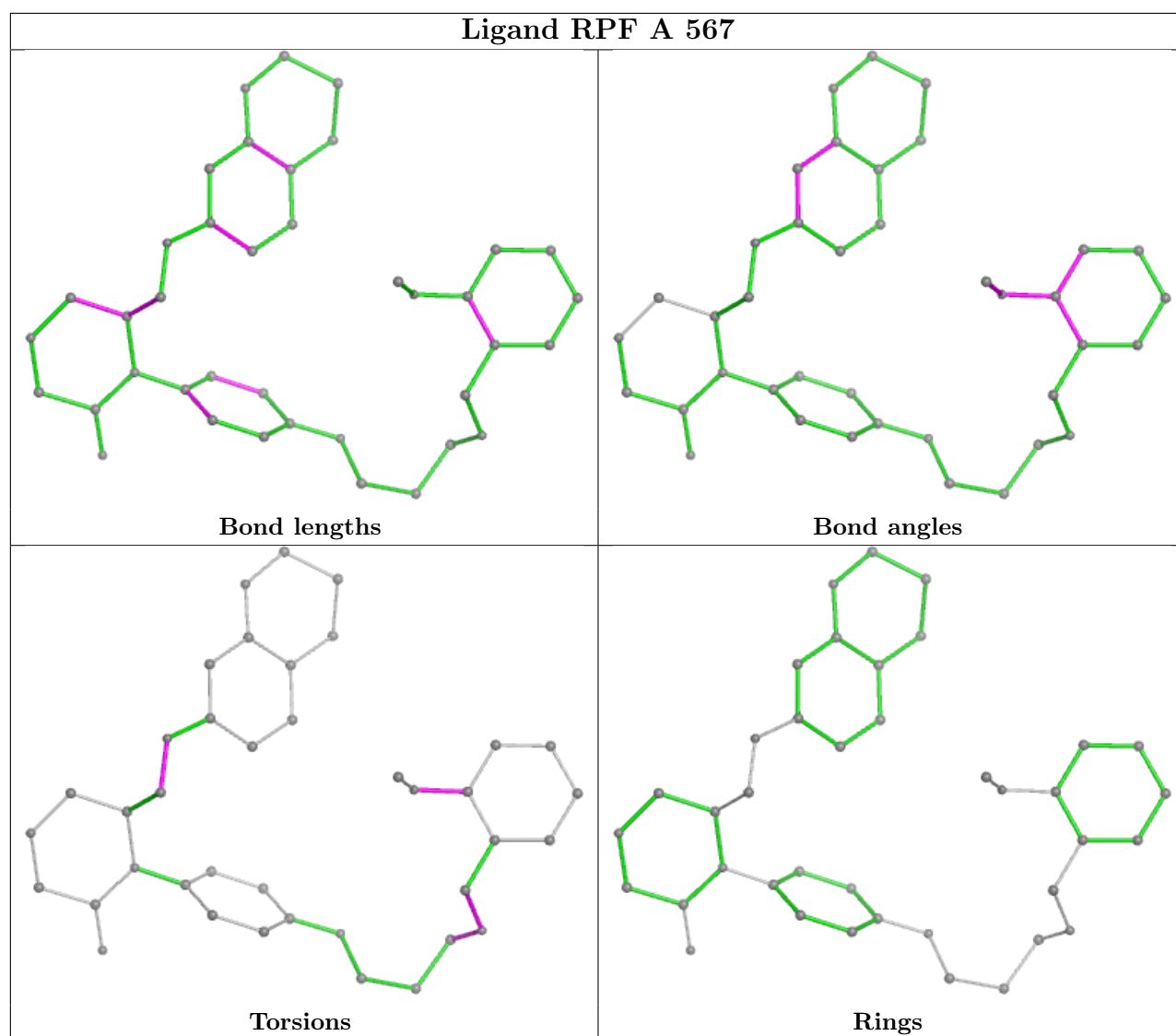
There are no ring outliers.

2 monomers are involved in 16 short contacts:

Mol	Chain	Res	Type	Clashes	Symm-Clashes
2	B	567	RPF	11	0
2	A	567	RPF	5	0

The following is a two-dimensional graphical depiction of Mogul quality analysis of bond lengths, bond angles, torsion angles, and ring geometry for all instances of the Ligand of Interest. In addition, ligands with molecular weight > 250 and outliers as shown on the validation Tables will also be included. For torsion angles, if less than 5% of the Mogul distribution of torsion angles is within 10 degrees of the torsion angle in question, then that torsion angle is considered an outlier. Any bond that is central to one or more torsion angles identified as an outlier by Mogul will be highlighted in the graph. For rings, the root-mean-square deviation (RMSD) between the ring in question and similar rings identified by Mogul is calculated over all ring torsion angles. If the average RMSD is greater than 60 degrees and the minimal RMSD between the ring in question and any Mogul-identified rings is also greater than 60 degrees, then that ring is considered an outlier. The outliers are highlighted in purple. The color gray indicates Mogul did not find sufficient equivalents in the CSD to analyse the geometry.





5.7 Other polymers [i](#)

There are no such residues in this entry.

5.8 Polymer linkage issues [i](#)

There are no chain breaks in this entry.

6 Fit of model and data

6.1 Protein, DNA and RNA chains

In the following table, the column labelled ‘#RSRZ > 2’ contains the number (and percentage) of RSRZ outliers, followed by percent RSRZ outliers for the chain as percentile scores relative to all X-ray entries and entries of similar resolution. The OWAB column contains the minimum, median, 95th percentile and maximum values of the occupancy-weighted average B-factor per residue. The column labelled ‘Q < 0.9’ lists the number of (and percentage) of residues with an average occupancy less than 0.9.

Mol	Chain	Analysed	<RSRZ>	#RSRZ>2	OWAB(Å ²)	Q<0.9
1	A	330/340 (97%)	0.85	43 (13%) 9 9	29, 51, 80, 91	0
1	B	330/340 (97%)	0.75	31 (9%) 15 17	26, 47, 71, 80	0
All	All	660/680 (97%)	0.80	74 (11%) 11 13	26, 48, 75, 91	0

All (74) RSRZ outliers are listed below:

Mol	Chain	Res	Type	RSRZ
1	A	205	SER	4.2
1	B	47	SER	4.2
1	A	78	TYR	3.8
1	B	55	TYR	3.8
1	A	161	SER	3.8
1	A	76	LEU	3.6
1	B	162	GLU	3.4
1	B	71	GLY	3.3
1	B	133	GLY	3.2
1	A	49	LEU	3.2
1	B	51	THR	3.1
1	B	73	GLU	3.0
1	A	245	LEU	3.0
1	A	206	SER	3.0
1	A	162	GLU	3.0
1	A	208	LEU	2.9
1	A	209	LEU	2.9
1	B	83	VAL	2.8
1	A	204	GLY	2.8
1	B	208	LEU	2.8
1	A	232	ILE	2.8
1	A	82	THR	2.8
1	B	40	TRP	2.7
1	A	247	ASP	2.7

Continued on next page...

Continued from previous page...

Mol	Chain	Res	Type	RSRZ
1	B	111	ALA	2.7
1	B	67	TYR	2.6
1	B	305	THR	2.6
1	B	82	THR	2.6
1	A	91	ILE	2.6
1	B	191	THR	2.5
1	A	241	ALA	2.5
1	B	206	SER	2.5
1	A	252	CYS	2.5
1	B	91	ILE	2.4
1	A	2	THR	2.4
1	A	301	PRO	2.4
1	A	199	LYS	2.4
1	A	249	VAL	2.4
1	B	76	LEU	2.4
1	B	207	THR	2.3
1	A	74	LEU	2.3
1	B	49	LEU	2.3
1	A	242	LYS	2.3
1	A	273	THR	2.3
1	A	294	HIS	2.3
1	A	248	TYR	2.3
1	B	70	ASN	2.3
1	B	209	LEU	2.3
1	A	191	THR	2.3
1	B	210	CYS	2.3
1	A	212	ASP	2.3
1	A	111	ALA	2.2
1	A	302	THR	2.2
1	A	286	LYS	2.2
1	B	84	SER	2.2
1	B	211	GLU	2.2
1	A	288	LEU	2.2
1	A	246	PHE	2.2
1	A	306	TRP	2.1
1	A	285	SER	2.1
1	B	204	GLY	2.1
1	B	134	ARG	2.1
1	A	55	TYR	2.1
1	B	205	SER	2.1
1	A	112	LEU	2.1
1	A	190	LYS	2.1

Continued on next page...

Continued from previous page...

Mol	Chain	Res	Type	RSRZ
1	A	189	ILE	2.1
1	A	256	PRO	2.1
1	B	299	PRO	2.1
1	A	75	THR	2.1
1	A	80	THR	2.1
1	B	2	THR	2.1
1	A	203	VAL	2.0
1	B	74	LEU	2.0

6.2 Non-standard residues in protein, DNA, RNA chains [i](#)

There are no non-standard protein/DNA/RNA residues in this entry.

6.3 Carbohydrates [i](#)

There are no monosaccharides in this entry.

6.4 Ligands [i](#)

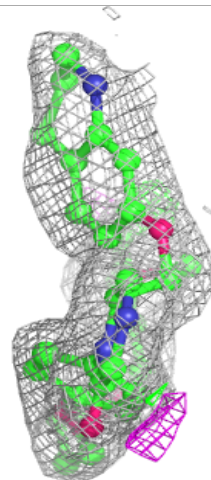
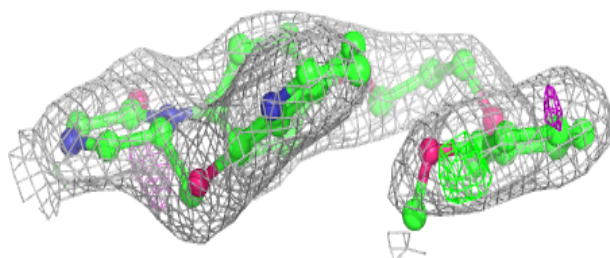
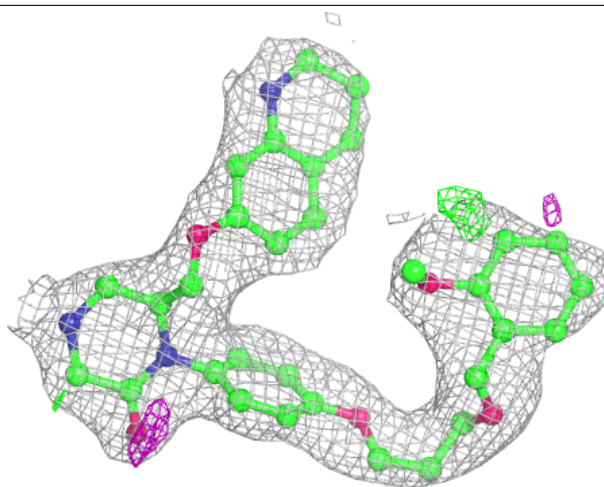
In the following table, the Atoms column lists the number of modelled atoms in the group and the number defined in the chemical component dictionary. The B-factors column lists the minimum, median, 95th percentile and maximum values of B factors of atoms in the group. The column labelled 'Q< 0.9' lists the number of atoms with occupancy less than 0.9.

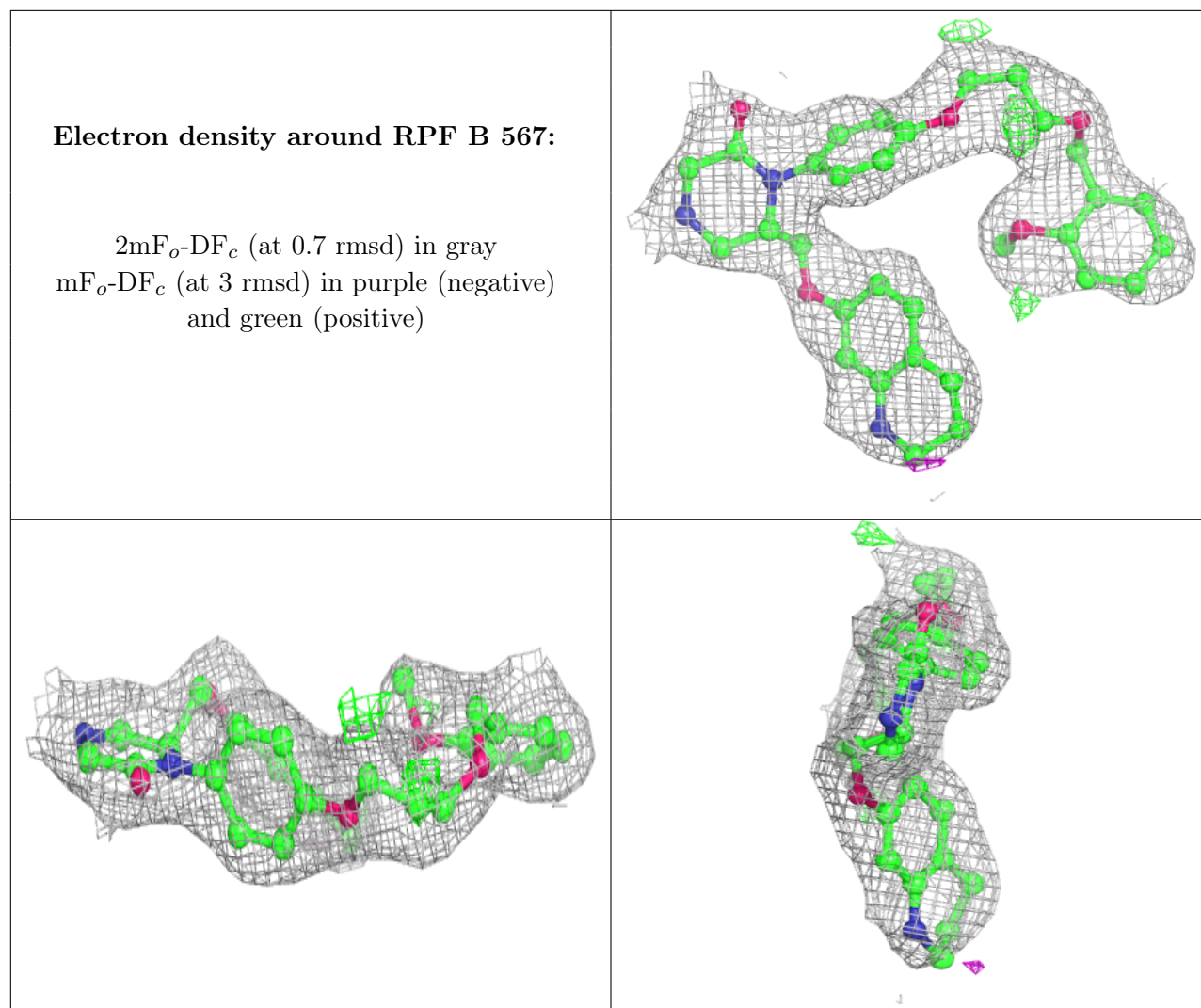
Mol	Type	Chain	Res	Atoms	RSCC	RSR	B-factors(Å ²)	Q<0.9
2	RPF	A	567	39/39	0.89	0.14	39,44,51,57	0
2	RPF	B	567	39/39	0.91	0.13	40,47,56,57	0

The following is a graphical depiction of the model fit to experimental electron density of all instances of the Ligand of Interest. In addition, ligands with molecular weight > 250 and outliers as shown on the geometry validation Tables will also be included. Each fit is shown from different orientation to approximate a three-dimensional view.

Electron density around RPF A 567:

$2mF_o-DF_c$ (at 0.7 rmsd) in gray
 mF_o-DF_c (at 3 rmsd) in purple (negative)
and green (positive)





6.5 Other polymers [i](#)

There are no such residues in this entry.