



Full wwPDB X-ray Structure Validation Report ⓘ

Nov 13, 2023 – 12:22 am GMT

PDB ID : 8BK2
Title : X-ray structure of meningococcal factor H binding protein variant 2 in complex with a specific and bactericidal human monoclonal antibody 1B1
Authors : Veggi, D.; Bottomley, J.M.
Deposited on : 2022-11-08
Resolution : 2.41 Å(reported)

This is a Full wwPDB X-ray Structure Validation Report for a publicly released PDB entry.

We welcome your comments at validation@mail.wwpdb.org

A user guide is available at

<https://www.wwpdb.org/validation/2017/XrayValidationReportHelp>

with specific help available everywhere you see the ⓘ symbol.

The types of validation reports are described at

<http://www.wwpdb.org/validation/2017/FAQs#types>.

The following versions of software and data (see [references ⓘ](#)) were used in the production of this report:

MolProbity : 4.02b-467
Mogul : 1.8.4, CSD as541be (2020)
Xtriage (Phenix) : 1.13
EDS : 2.36
buster-report : 1.1.7 (2018)
Percentile statistics : 20191225.v01 (using entries in the PDB archive December 25th 2019)
Refmac : 5.8.0158
CCP4 : 7.0.044 (Gargrove)
Ideal geometry (proteins) : Engh & Huber (2001)
Ideal geometry (DNA, RNA) : Parkinson et al. (1996)
Validation Pipeline (wwPDB-VP) : 2.36

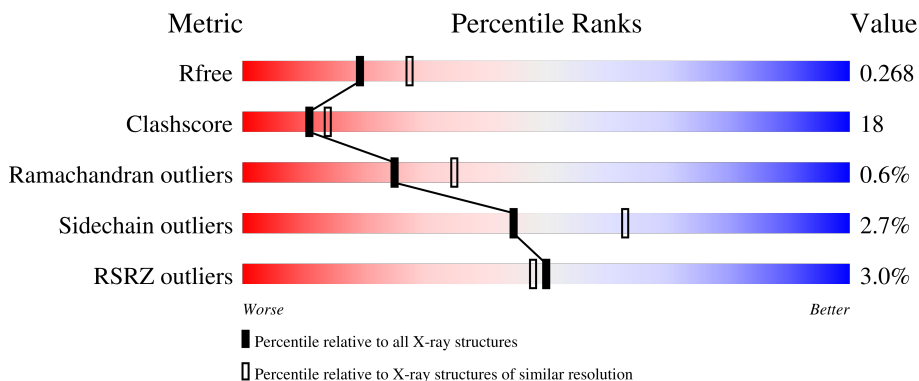
1 Overall quality at a glance

The following experimental techniques were used to determine the structure:

X-RAY DIFFRACTION

The reported resolution of this entry is 2.41 Å.

Percentile scores (ranging between 0-100) for global validation metrics of the entry are shown in the following graphic. The table shows the number of entries on which the scores are based.







Metric	Whole archive (#Entries)	Similar resolution (#Entries, resolution range(Å))
R_{free}	130704	4647 (2.44-2.40)
Clashscore	141614	5161 (2.44-2.40)
Ramachandran outliers	138981	5073 (2.44-2.40)
Sidechain outliers	138945	5074 (2.44-2.40)
RSRZ outliers	127900	4543 (2.44-2.40)

The table below summarises the geometric issues observed across the polymeric chains and their fit to the electron density. The red, orange, yellow and green segments of the lower bar indicate the fraction of residues that contain outliers for ≥ 3 , 2, 1 and 0 types of geometric quality criteria respectively. A grey segment represents the fraction of residues that are not modelled. The numeric value for each fraction is indicated below the corresponding segment, with a dot representing fractions $\leq 5\%$. The upper red bar (where present) indicates the fraction of residues that have poor fit to the electron density. The numeric value is given above the bar.

Mol	Chain	Length	Quality of chain
1	A	260	 10% 51% 17% 32%
1	B	260	 48% 20% 32%
1	C	260	 10% 50% 16% 33%
2	D	226	 10% 75% 18% • 6%
2	F	226	 10% 50% 40% • 7%

Continued on next page...

Continued from previous page...

Mol	Chain	Length	Quality of chain
2	H	226	 80% 15% .
3	E	216	 4% 66% 31% ..
3	G	216	 6% 56% 39% 5%
3	L	216	 69% 27% ..

The following table lists non-polymeric compounds, carbohydrate monomers and non-standard residues in protein, DNA, RNA chains that are outliers for geometric or electron-density-fit criteria:

Mol	Type	Chain	Res	Chirality	Geometry	Clashes	Electron density
4	EDO	B	301	-	-	X	-
8	MPD	L	302	-	-	X	-

2 Entry composition

There are 10 unique types of molecules in this entry. The entry contains 13902 atoms, of which 111 are hydrogens and 0 are deuteriums.

In the tables below, the ZeroOcc column contains the number of atoms modelled with zero occupancy, the AltConf column contains the number of residues with at least one atom in alternate conformation and the Trace column contains the number of residues modelled with at most 2 atoms.

- Molecule 1 is a protein called Factor H-binding protein.

Mol	Chain	Residues	Atoms				ZeroOcc	AltConf	Trace
			Total	C	N	O			
1	A	176	1341	842	234	265	3	0	0
1	B	176	1338	842	234	262	2	1	0
1	C	173	1303	823	225	255	3	0	0

There are 39 discrepancies between the modelled and reference sequences:

Chain	Residue	Modelled	Actual	Comment	Reference
A	1	GLY	-	expression tag	UNP B9VX96
A	2	PRO	-	expression tag	UNP B9VX96
A	3	ASP	-	expression tag	UNP B9VX96
A	4	SER	-	expression tag	UNP B9VX96
A	5	ASP	-	expression tag	UNP B9VX96
A	6	ARG	-	expression tag	UNP B9VX96
A	7	LEU	-	expression tag	UNP B9VX96
A	8	GLN	-	expression tag	UNP B9VX96
A	9	GLN	-	expression tag	UNP B9VX96
A	10	ARG	-	expression tag	UNP B9VX96
A	11	ARG	-	expression tag	UNP B9VX96
A	259	LEU	-	expression tag	UNP B9VX96
A	260	GLU	-	expression tag	UNP B9VX96
B	1	GLY	-	expression tag	UNP B9VX96
B	2	PRO	-	expression tag	UNP B9VX96
B	3	ASP	-	expression tag	UNP B9VX96
B	4	SER	-	expression tag	UNP B9VX96
B	5	ASP	-	expression tag	UNP B9VX96
B	6	ARG	-	expression tag	UNP B9VX96
B	7	LEU	-	expression tag	UNP B9VX96
B	8	GLN	-	expression tag	UNP B9VX96
B	9	GLN	-	expression tag	UNP B9VX96
B	10	ARG	-	expression tag	UNP B9VX96

Continued on next page...

Continued from previous page...

Chain	Residue	Modelled	Actual	Comment	Reference
B	11	ARG	-	expression tag	UNP B9VX96
B	259	LEU	-	expression tag	UNP B9VX96
B	260	GLU	-	expression tag	UNP B9VX96
C	1	GLY	-	expression tag	UNP B9VX96
C	2	PRO	-	expression tag	UNP B9VX96
C	3	ASP	-	expression tag	UNP B9VX96
C	4	SER	-	expression tag	UNP B9VX96
C	5	ASP	-	expression tag	UNP B9VX96
C	6	ARG	-	expression tag	UNP B9VX96
C	7	LEU	-	expression tag	UNP B9VX96
C	8	GLN	-	expression tag	UNP B9VX96
C	9	GLN	-	expression tag	UNP B9VX96
C	10	ARG	-	expression tag	UNP B9VX96
C	11	ARG	-	expression tag	UNP B9VX96
C	259	LEU	-	expression tag	UNP B9VX96
C	260	GLU	-	expression tag	UNP B9VX96

- Molecule 2 is a protein called Fab Heavy chain.

Mol	Chain	Residues	Atoms					ZeroOcc	AltConf	Trace
			Total	C	N	O	S			
2	H	216	Total 1602	C 1007	N 271	O 318	S 6	1	0	0
2	D	213	Total 1570	C 988	N 263	O 313	S 6	1	0	0
2	F	210	Total 1536	C 967	N 257	O 306	S 6	0	0	0

- Molecule 3 is a protein called Fab light Chains.

Mol	Chain	Residues	Atoms					ZeroOcc	AltConf	Trace
			Total	C	N	O	S			
3	L	214	Total 1629	C 1019	N 276	O 329	S 5	2	0	0
3	E	214	Total 1618	C 1013	N 274	O 326	S 5	0	0	0
3	G	206	Total 1558	C 975	N 263	O 315	S 5	0	0	0

- Molecule 4 is 1,2-ETHANEDIOL (three-letter code: EDO) (formula: C₂H₆O₂).



Mol	Chain	Residues	Atoms				ZeroOcc	AltConf
4	A	1	Total	C	H	O	0	0
			10	2	6	2		
4	B	1	Total	C	H	O	0	0
			10	2	6	2		
4	D	1	Total	C	H	O	0	0
			10	2	6	2		
4	D	1	Total	C	H	O	0	0
			10	2	6	2		
4	E	1	Total	C	H	O	0	0
			10	2	6	2		
4	F	1	Total	C	H	O	0	0
			10	2	6	2		

- Molecule 5 is IMIDAZOLE (three-letter code: IMD) (formula: C₃H₅N₂).



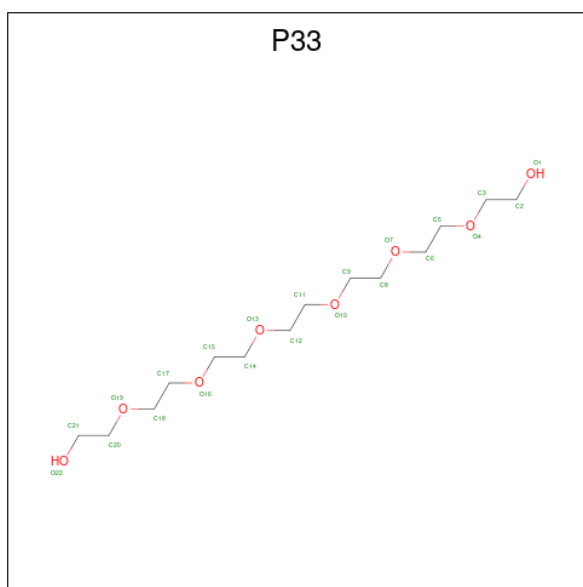
Mol	Chain	Residues	Atoms				ZeroOcc	AltConf
			Total	C	H	N		
5	B	1	10	3	5	2	0	0

- Molecule 6 is SULFATE ION (three-letter code: SO₄) (formula: O₄S).



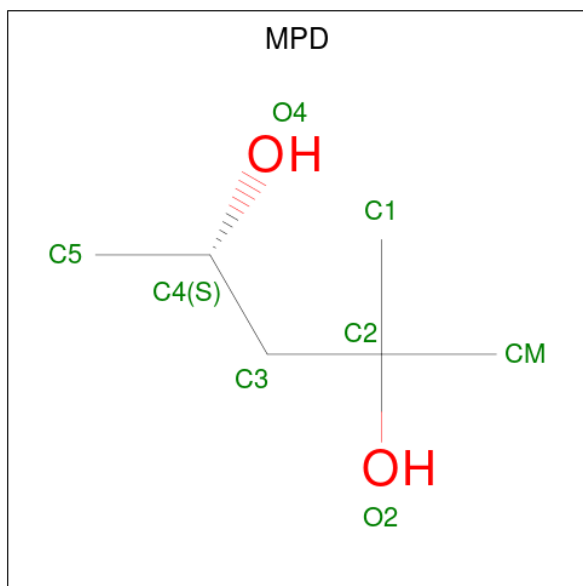
Mol	Chain	Residues	Atoms			ZeroOcc	AltConf
			Total	O	S		
6	C	1	5	4	1	0	0

- Molecule 7 is 3,6,9,12,15,18-HEXAOXAIICOSANE-1,20-DIOL (three-letter code: P33) (formula: C₁₄H₃₀O₈).



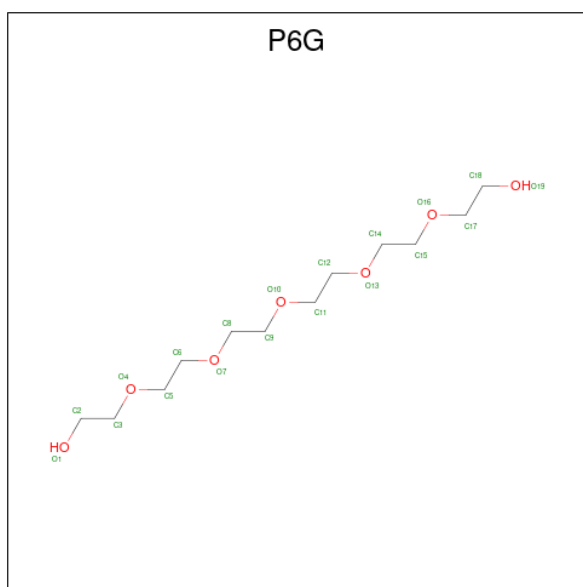
Mol	Chain	Residues	Atoms				ZeroOcc	AltConf
			Total	C	H	O		
7	L	1	52	14	30	8	0	0

- Molecule 8 is (4S)-2-METHYL-2,4-PENTANEDIOL (three-letter code: MPD) (formula: $C_6H_{14}O_2$).



Mol	Chain	Residues	Atoms				ZeroOcc	AltConf
			Total	C	H	O		
8	L	1	22	6	14	2	0	0

- Molecule 9 is HEXAETHYLENE GLYCOL (three-letter code: P6G) (formula: $C_{12}H_{26}O_7$).



Mol	Chain	Residues	Atoms			ZeroOcc	AltConf	
			Total	C	H			O
9	G	1	45	12	26	7	0	0

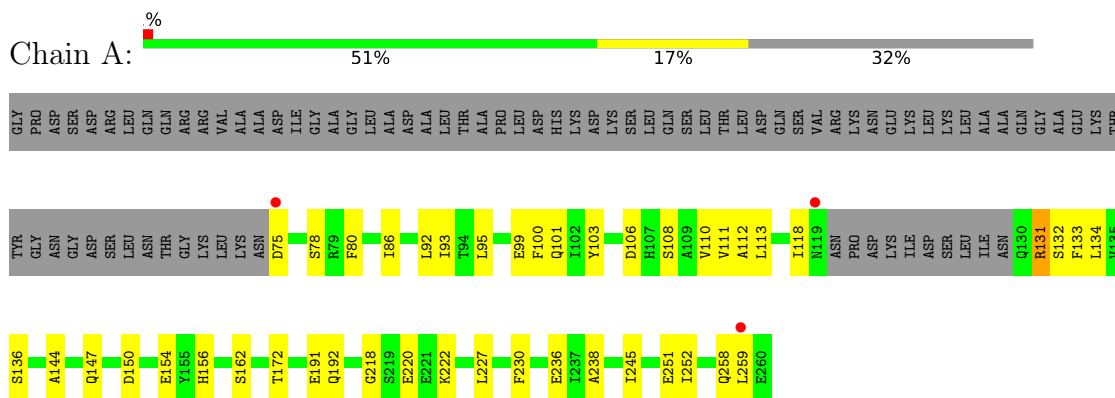
- Molecule 10 is water.

Mol	Chain	Residues	Atoms		ZeroOcc	AltConf
10	A	16	Total	O	0	0
			16	16		
10	B	7	Total	O	0	0
			7	7		
10	C	9	Total	O	0	0
			9	9		
10	H	41	Total	O	0	0
			41	41		
10	L	44	Total	O	0	0
			44	44		
10	D	28	Total	O	0	0
			28	28		
10	E	40	Total	O	0	0
			40	40		
10	F	9	Total	O	0	0
			9	9		
10	G	19	Total	O	0	0
			19	19		

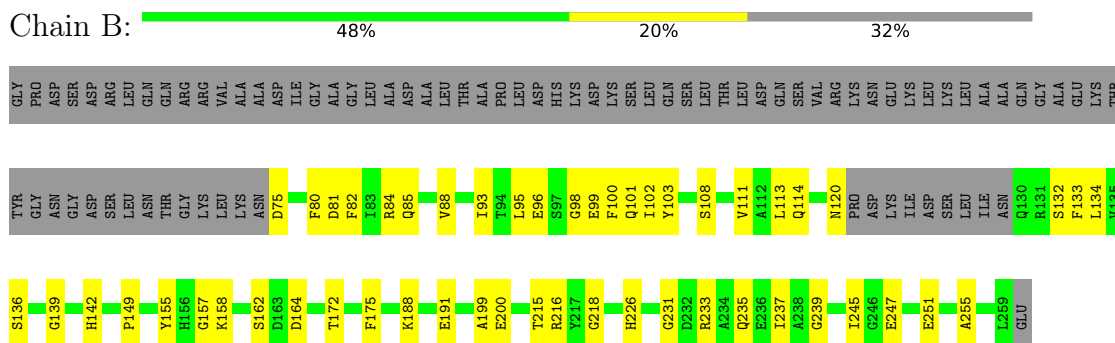
3 Residue-property plots [i](#)

These plots are drawn for all protein, RNA, DNA and oligosaccharide chains in the entry. The first graphic for a chain summarises the proportions of the various outlier classes displayed in the second graphic. The second graphic shows the sequence view annotated by issues in geometry and electron density. Residues are color-coded according to the number of geometric quality criteria for which they contain at least one outlier: green = 0, yellow = 1, orange = 2 and red = 3 or more. A red dot above a residue indicates a poor fit to the electron density ($RSRZ > 2$). Stretches of 2 or more consecutive residues without any outlier are shown as a green connector. Residues present in the sample, but not in the model, are shown in grey.

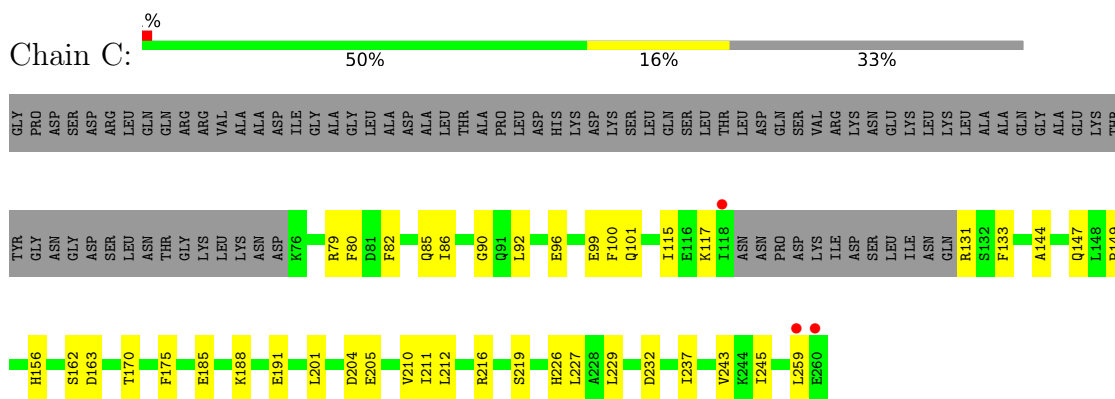
- Molecule 1: Factor H-binding protein




- Molecule 1: Factor H-binding protein

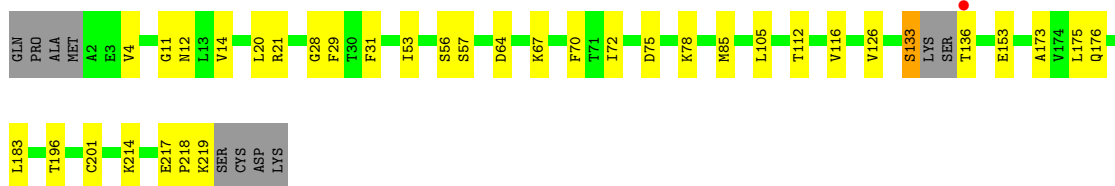


- Molecule 1: Factor H-binding protein




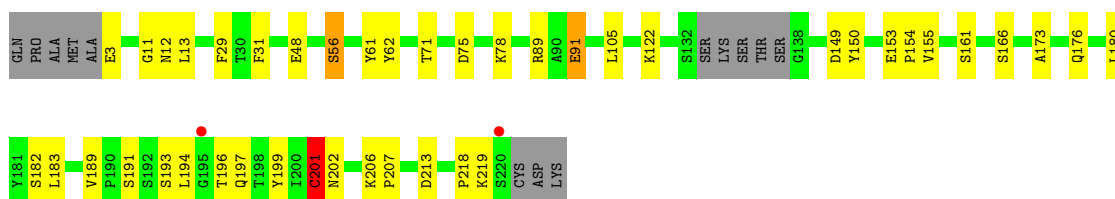
- Molecule 2: Fab Heavy chain

Chain H:  80% 15% .



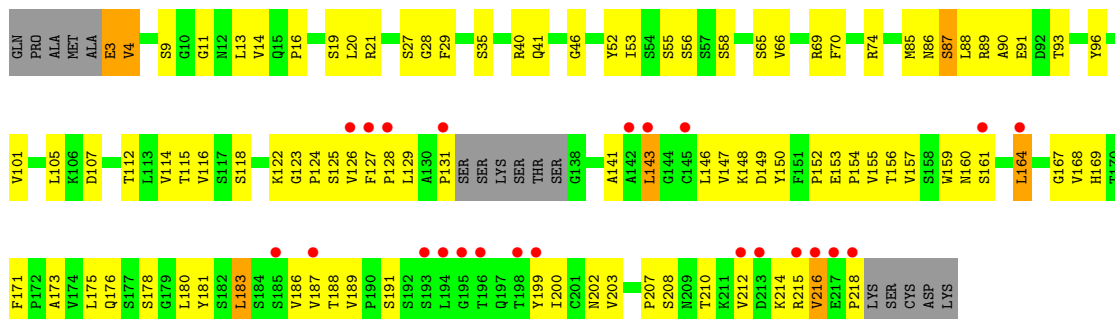
- Molecule 2: Fab Heavy chain

Chain D:  75% 18% 6% .



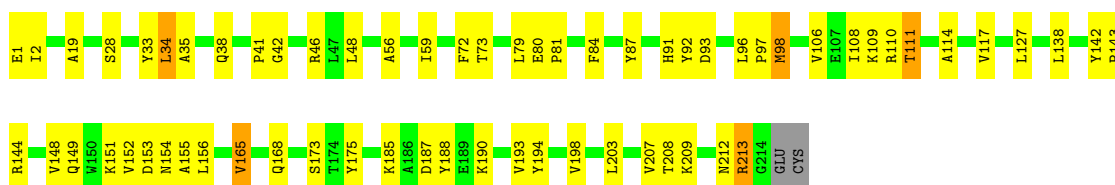
- Molecule 2: Fab Heavy chain

Chain F:  10% 50% 40% 7% .



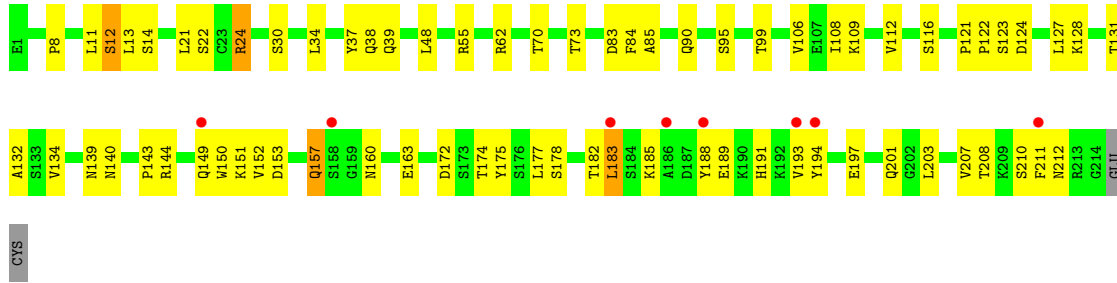
- Molecule 3: Fab light Chains

Chain L:  69% 27% ..

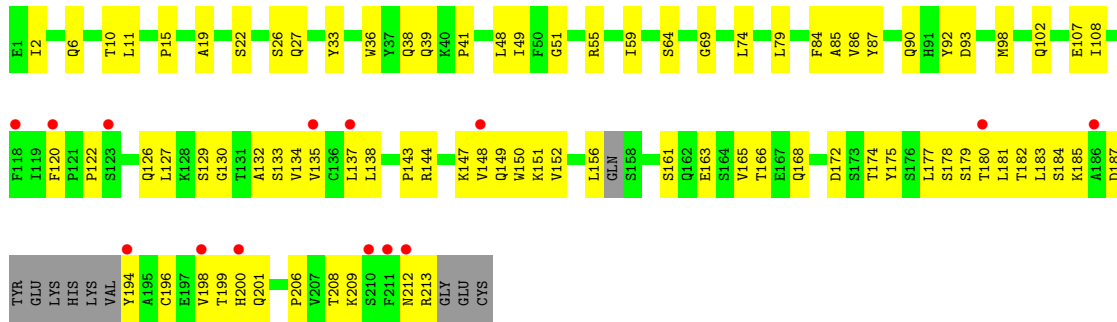


- Molecule 3: Fab light Chains

Chain E:  4% 66% 31% ..



• Molecule 3: Fab light Chains



4 Data and refinement statistics i

Property	Value	Source
Space group	P 1 21 1	Depositor
Cell constants a, b, c, α , β , γ	77.15Å 135.64Å 121.53Å 90.00° 105.18° 90.00°	Depositor
Resolution (Å)	49.66 – 2.41 49.66 – 2.41	Depositor EDS
% Data completeness (in resolution range)	99.6 (49.66-2.41) 99.6 (49.66-2.41)	Depositor EDS
R_{merge}	(Not available)	Depositor
R_{sym}	(Not available)	Depositor
$\langle I/\sigma(I) \rangle$ ¹	1.36 (at 2.42Å)	Xtrriage
Refinement program	PHENIX 1.20.1_4487, PHENIX 1.20.1_4487	Depositor
R, R_{free}	0.204 , 0.270 0.203 , 0.268	Depositor DCC
R_{free} test set	4732 reflections (5.11%)	wwPDB-VP
Wilson B-factor (Å ²)	62.0	Xtrriage
Anisotropy	0.306	Xtrriage
Bulk solvent k_{sol} (e/Å ³), B_{sol} (Å ²)	0.30 , 45.6	EDS
L-test for twinning ²	$\langle L \rangle = 0.49$, $\langle L^2 \rangle = 0.32$	Xtrriage
Estimated twinning fraction	No twinning to report.	Xtrriage
F_o, F_c correlation	0.95	EDS
Total number of atoms	13902	wwPDB-VP
Average B, all atoms (Å ²)	66.0	wwPDB-VP

Xtrriage's analysis on translational NCS is as follows: *The largest off-origin peak in the Patterson function is 3.53% of the height of the origin peak. No significant pseudotranslation is detected.*

¹Intensities estimated from amplitudes.

²Theoretical values of $\langle |L| \rangle$, $\langle L^2 \rangle$ for acentric reflections are 0.5, 0.333 respectively for untwinned datasets, and 0.375, 0.2 for perfectly twinned datasets.

5 Model quality [i](#)

5.1 Standard geometry [i](#)

Bond lengths and bond angles in the following residue types are not validated in this section: P33, IMD, MPD, P6G, EDO, SO4

The Z score for a bond length (or angle) is the number of standard deviations the observed value is removed from the expected value. A bond length (or angle) with $|Z| > 5$ is considered an outlier worth inspection. RMSZ is the root-mean-square of all Z scores of the bond lengths (or angles).

Mol	Chain	Bond lengths		Bond angles	
		RMSZ	# Z >5	RMSZ	# Z >5
1	A	0.41	0/1362	0.63	0/1831
1	B	0.40	0/1362	0.63	0/1831
1	C	0.42	0/1324	0.61	0/1781
2	D	0.50	1/1605 (0.1%)	0.65	0/2189
2	F	0.40	0/1571	0.61	0/2147
2	H	0.53	1/1637 (0.1%)	0.67	0/2229
3	E	0.44	0/1654	0.64	0/2249
3	G	0.40	0/1590	0.62	0/2159
3	L	0.48	0/1665	0.67	1/2262 (0.0%)
All	All	0.45	2/13770 (0.0%)	0.64	1/18678 (0.0%)

All (2) bond length outliers are listed below:

Mol	Chain	Res	Type	Atoms	Z	Observed(Å)	Ideal(Å)
2	H	201	CYS	CB-SG	-6.48	1.71	1.82
2	D	201	CYS	CB-SG	-6.15	1.71	1.82

All (1) bond angle outliers are listed below:

Mol	Chain	Res	Type	Atoms	Z	Observed(°)	Ideal(°)
3	L	34	LEU	CA-CB-CG	-6.01	101.48	115.30

There are no chirality outliers.

There are no planarity outliers.

5.2 Too-close contacts [i](#)

In the following table, the Non-H and H(model) columns list the number of non-hydrogen atoms and hydrogen atoms in the chain respectively. The H(added) column lists the number of hydrogen

atoms added and optimized by MolProbity. The Clashes column lists the number of clashes within the asymmetric unit, whereas Symm-Clashes lists symmetry-related clashes.

Mol	Chain	Non-H	H(model)	H(added)	Clashes	Symm-Clashes
1	A	1341	0	1298	36	0
1	B	1338	0	1294	39	0
1	C	1303	0	1261	36	0
2	D	1570	0	1522	27	0
2	F	1536	0	1465	115	0
2	H	1602	0	1572	43	0
3	E	1618	0	1556	64	0
3	G	1558	0	1505	80	0
3	L	1629	0	1575	59	0
4	A	4	6	6	1	0
4	B	4	6	6	5	0
4	D	8	12	12	4	0
4	E	4	6	6	0	0
4	F	4	6	6	2	0
5	B	5	5	5	2	0
6	C	5	0	0	0	0
7	L	22	30	30	3	0
8	L	8	14	14	8	0
9	G	19	26	26	3	0
10	A	16	0	0	1	0
10	B	7	0	0	3	0
10	C	9	0	0	4	0
10	D	28	0	0	1	0
10	E	40	0	0	2	0
10	F	9	0	0	0	0
10	G	19	0	0	2	0
10	H	41	0	0	1	0
10	L	44	0	0	1	0
All	All	13791	111	13159	484	0

The all-atom clashscore is defined as the number of clashes found per 1000 atoms (including hydrogen atoms). The all-atom clashscore for this structure is 18.

All (484) close contacts within the same asymmetric unit are listed below, sorted by their clash magnitude.

Atom-1	Atom-2	Interatomic distance (Å)	Clash overlap (Å)
1:A:100:PHE:HB3	1:A:113:LEU:HD13	1.33	1.10
3:E:193:VAL:HG22	3:E:212:ASN:HA	1.36	1.07
2:F:183:LEU:HA	4:F:301:EDO:H11	1.40	0.99

Continued on next page...

Continued from previous page...

Atom-1	Atom-2	Interatomic distance (Å)	Clash overlap (Å)
2:H:11:GLY:H	2:H:112:THR:HG21	1.29	0.97
2:F:126:VAL:HG21	2:F:212:VAL:HG21	1.46	0.96
3:L:203:LEU:HD13	3:L:207:VAL:HG23	1.47	0.95
3:L:149:GLN:HG2	3:L:156:LEU:HD11	1.46	0.94
2:F:52:TYR:HB2	3:G:98:MET:HE1	1.46	0.93
3:G:127:LEU:HD21	3:G:132:ALA:HB2	1.48	0.92
2:H:75:ASP:OD2	2:H:78:LYS:HE2	1.70	0.91
3:E:122:PRO:HB2	3:E:127:LEU:HD11	1.54	0.90
3:G:177:LEU:HD23	3:G:178:SER:N	1.87	0.90
3:E:203:LEU:HD13	3:E:207:VAL:HG23	1.53	0.89
8:L:302:MPD:O4	8:L:302:MPD:H12	1.71	0.88
2:H:11:GLY:HA3	2:H:112:THR:HG22	1.55	0.87
1:B:88:VAL:HG21	1:B:93:ILE:HD12	1.56	0.85
2:F:126:VAL:CG2	2:F:212:VAL:HG21	2.06	0.84
3:L:2:ILE:HB	8:L:302:MPD:H13	1.60	0.84
1:A:100:PHE:HB3	1:A:113:LEU:CD1	2.10	0.82
1:B:191:GLU:HB2	1:B:245:ILE:HD13	1.62	0.81
3:G:151:LYS:HG2	3:G:156:LEU:HD13	1.62	0.81
2:H:133:SER:HA	2:H:136:THR:HG22	1.63	0.81
3:E:121:PRO:HB3	3:E:211:PHE:CE2	2.16	0.80
2:H:219:LYS:N	10:H:301:HOH:O	2.09	0.80
1:B:100:PHE:HE1	1:B:102:ILE:HD11	1.47	0.80
2:F:13:LEU:HA	2:F:115:THR:O	1.82	0.79
2:F:126:VAL:HG21	2:F:212:VAL:CG2	2.13	0.79
2:F:131:PRO:HG3	2:F:143:LEU:HD21	1.63	0.79
3:G:120:PHE:HB2	3:G:135:VAL:HG13	1.64	0.79
1:C:170:THR:OG1	10:C:401:HOH:O	2.00	0.79
1:B:101:GLN:NE2	1:B:162:SER:O	2.15	0.78
2:H:64:ASP:HA	2:H:67:LYS:HD3	1.66	0.78
2:D:201:CYS:O	2:D:213:ASP:HA	1.82	0.78
2:F:131:PRO:HD2	2:F:218:PRO:HA	1.65	0.78
1:B:88:VAL:CG2	1:B:93:ILE:HD12	2.13	0.77
2:F:131:PRO:HG3	2:F:143:LEU:CD2	2.14	0.77
2:F:147:VAL:HB	2:F:183:LEU:HD23	1.66	0.76
1:A:86:ILE:HD13	1:A:95:LEU:HD11	1.65	0.76
2:F:14:VAL:O	2:F:116:VAL:HA	1.84	0.76
2:F:200:ILE:HD12	2:F:200:ILE:O	1.85	0.76
3:G:51:GLY:O	10:G:401:HOH:O	2.02	0.76
2:F:93:THR:HG23	2:F:116:VAL:HG12	1.66	0.76
3:E:185:LYS:O	3:E:189:GLU:HG3	1.85	0.75
4:D:302:EDO:H21	3:E:99:THR:HA	1.67	0.75

Continued on next page...

Continued from previous page...

Atom-1	Atom-2	Interatomic distance (Å)	Clash overlap (Å)
2:F:93:THR:HG22	2:F:115:THR:HA	1.68	0.75
1:C:156:HIS:CE1	1:C:259:LEU:HD11	2.22	0.74
2:D:75:ASP:OD2	2:D:78:LYS:HD2	1.86	0.74
1:B:85:GLN:NE2	10:B:401:HOH:O	2.11	0.74
2:F:52:TYR:HB2	3:G:98:MET:CE	2.16	0.74
2:F:70:PHE:CZ	2:F:85:MET:HG2	2.23	0.74
3:L:96:LEU:HA	4:D:301:EDO:H21	1.68	0.73
3:E:152:VAL:HG22	3:E:157:GLN:OE1	1.87	0.73
3:L:149:GLN:CG	3:L:156:LEU:HD11	2.18	0.73
3:L:41:PRO:HA	7:L:301:P33:H171	1.70	0.72
2:H:126:VAL:O	2:H:214:LYS:HE3	1.90	0.72
2:F:9:SER:HA	2:F:112:THR:HG21	1.70	0.72
3:E:157:GLN:HG2	3:E:160:ASN:HD21	1.52	0.72
1:A:86:ILE:CD1	1:A:95:LEU:HD11	2.20	0.71
1:B:82:PHE:CE1	1:B:98:GLY:HA3	2.25	0.71
2:F:167:GLY:O	2:F:187:VAL:HA	1.91	0.71
2:F:152:PRO:HD2	2:F:207:PRO:HB2	1.73	0.70
2:F:93:THR:CG2	2:F:116:VAL:H	2.04	0.70
3:G:150:TRP:CD2	3:G:181:LEU:HD12	2.26	0.70
1:C:204:ASP:OD2	10:C:402:HOH:O	2.09	0.70
2:F:89:ARG:O	2:F:116:VAL:HG11	1.92	0.69
3:G:143:PRO:HD2	3:G:200:HIS:HE1	1.58	0.69
2:H:11:GLY:H	2:H:112:THR:CG2	2.05	0.69
3:E:123:SER:O	3:E:127:LEU:HD12	1.93	0.68
2:F:9:SER:CA	2:F:112:THR:HG21	2.23	0.68
3:E:121:PRO:HB3	3:E:211:PHE:CZ	2.27	0.68
2:D:176:GLN:HG2	2:D:180:LEU:O	1.95	0.67
2:H:11:GLY:N	2:H:112:THR:HG21	2.05	0.67
3:G:120:PHE:HB2	3:G:135:VAL:CG1	2.24	0.67
2:F:69:ARG:CD	2:F:87:SER:HB2	2.24	0.67
1:B:199:ALA:HA	4:B:301:EDO:H12	1.77	0.67
1:C:205:GLU:CD	1:C:205:GLU:H	1.95	0.67
3:E:55:ARG:HG3	10:E:417:HOH:O	1.95	0.67
2:F:69:ARG:HG2	2:F:87:SER:HB2	1.77	0.67
2:F:3:GLU:O	2:F:4:VAL:HB	1.94	0.66
3:G:41:PRO:HA	9:G:301:P6G:H22	1.77	0.66
2:F:40:ARG:HD3	2:F:96:TYR:CE2	2.31	0.66
2:F:200:ILE:HD13	2:F:202:ASN:OD1	1.94	0.66
1:C:229:LEU:HD12	1:C:237:ILE:HG22	1.78	0.66
2:F:141:ALA:HB2	2:F:191:SER:HB3	1.77	0.66
1:A:218:GLY:HA3	10:A:401:HOH:O	1.95	0.66

Continued on next page...

Continued from previous page...

Atom-1	Atom-2	Interatomic distance (Å)	Clash overlap (Å)
1:C:144:ALA:HB3	1:C:147:GLN:HG3	1.77	0.66
3:L:97:PRO:HD2	8:L:302:MPD:H4	1.78	0.66
3:G:165:VAL:HG12	3:G:166:THR:O	1.96	0.66
1:A:191:GLU:HB2	1:A:245:ILE:CD1	2.26	0.66
3:E:185:LYS:NZ	3:E:189:GLU:OE1	2.29	0.66
3:E:127:LEU:O	3:E:185:LYS:HD2	1.96	0.65
2:H:67:LYS:HD2	2:D:56:SER:HB2	1.77	0.65
2:F:153:GLU:O	2:F:155:VAL:N	2.30	0.65
3:G:172:ASP:OD1	3:G:174:THR:HG23	1.96	0.65
3:E:122:PRO:CB	3:E:127:LEU:HD11	2.27	0.65
3:L:109:LYS:HA	3:L:142:TYR:OH	1.96	0.65
1:C:90:GLY:N	10:C:403:HOH:O	2.20	0.64
1:C:156:HIS:HE1	1:C:259:LEU:HD11	1.60	0.64
3:L:48:LEU:HD11	3:L:87:TYR:HE2	1.62	0.64
2:F:148:LYS:HD3	2:F:149:ASP:OD2	1.96	0.64
1:A:136:SER:HB3	1:A:251:GLU:OE2	1.96	0.64
1:C:101:GLN:NE2	1:C:162:SER:O	2.31	0.63
3:L:80:GLU:OE1	2:F:21:ARG:NH2	2.31	0.63
2:F:116:VAL:O	2:F:116:VAL:HG13	1.98	0.63
2:F:160:ASN:H	2:F:200:ILE:HD12	1.64	0.63
3:G:48:LEU:O	3:G:49:ILE:HD13	1.98	0.63
1:B:172:THR:HG21	5:B:302:IMD:H4	1.81	0.63
3:E:152:VAL:HG12	3:E:194:TYR:CD2	2.34	0.62
1:C:86:ILE:CG2	1:C:92:LEU:HD22	2.29	0.62
3:E:172:ASP:OD1	3:E:174:THR:HG23	1.99	0.62
2:F:11:GLY:HA2	2:F:114:VAL:HG12	1.81	0.62
2:F:69:ARG:HD2	2:F:87:SER:HB2	1.82	0.62
1:B:84:ARG:NH1	1:B:96:GLU:OE2	2.33	0.61
3:L:153:ASP:HA	3:L:193:VAL:HG23	1.82	0.61
2:H:133:SER:HA	2:H:136:THR:CG2	2.31	0.61
3:E:124:ASP:O	3:E:128:LYS:HG2	2.00	0.61
3:G:148:VAL:HG11	3:G:179:SER:HB2	1.81	0.61
2:F:124:PRO:HA	2:F:150:TYR:HB3	1.83	0.60
1:C:191:GLU:OE1	1:C:191:GLU:N	2.32	0.60
2:D:91:GLU:CD	2:D:91:GLU:H	2.04	0.60
3:L:84:PHE:CD1	3:L:108:ILE:HG13	2.36	0.60
2:F:93:THR:HG22	2:F:116:VAL:H	1.65	0.60
2:H:21:ARG:HG3	2:H:21:ARG:HH11	1.67	0.60
2:H:133:SER:CA	2:H:136:THR:HG22	2.32	0.60
3:L:114:ALA:HB1	3:L:203:LEU:CD2	2.32	0.60
2:F:90:ALA:HA	2:F:116:VAL:HG13	1.84	0.60

Continued on next page...

Continued from previous page...

Atom-1	Atom-2	Interatomic distance (Å)	Clash overlap (Å)
1:B:233:ARG:HD3	3:L:1:GLU:OE2	2.02	0.60
2:F:128:PRO:HB3	2:F:216:VAL:HA	1.82	0.60
2:F:129:LEU:HB3	3:G:120:PHE:CD2	2.36	0.60
2:F:208:SER:OG	2:F:210:THR:OG1	2.20	0.59
3:L:84:PHE:CG	3:L:108:ILE:HG13	2.37	0.59
1:B:95:LEU:HD22	1:B:120:ASN:HB2	1.84	0.59
3:G:6:GLN:O	3:G:102:GLN:NE2	2.35	0.59
1:C:210:VAL:HG23	1:C:227:LEU:O	2.02	0.59
3:G:150:TRP:CE3	3:G:181:LEU:HD12	2.37	0.59
2:F:164:LEU:O	2:F:168:VAL:HG21	2.02	0.59
1:C:149:PRO:HG2	1:C:175:PHE:CE2	2.38	0.59
2:F:178:SER:OG	2:F:180:LEU:HD12	2.02	0.58
3:L:48:LEU:HD11	3:L:87:TYR:CE2	2.38	0.58
2:F:4:VAL:HG22	2:F:29:PHE:CD1	2.38	0.58
1:C:86:ILE:HG21	1:C:92:LEU:HD13	1.84	0.58
1:A:144:ALA:HB3	1:A:147:GLN:HG3	1.84	0.58
3:G:39:GLN:HA	10:G:416:HOH:O	2.02	0.58
3:G:19:ALA:HB2	3:G:79:LEU:HD11	1.83	0.58
1:B:191:GLU:HB2	1:B:245:ILE:CD1	2.34	0.58
3:G:147:LYS:HB3	3:G:199:THR:HB	1.86	0.57
3:G:212:ASN:O	3:G:213:ARG:HB2	2.04	0.57
2:D:61:TYR:OH	3:E:95:SER:HA	2.04	0.57
3:E:39:GLN:O	3:E:85:ALA:HB1	2.04	0.57
2:D:12:ASN:OD1	2:D:13:LEU:N	2.33	0.57
2:F:69:ARG:CG	2:F:87:SER:HB2	2.35	0.57
3:L:212:ASN:O	3:L:213:ARG:HB2	2.03	0.57
1:B:136:SER:OG	1:B:251:GLU:OE2	2.23	0.57
1:B:199:ALA:HB1	4:B:301:EDO:H11	1.87	0.56
3:E:139:ASN:ND2	3:E:140:ASN:OD1	2.38	0.56
2:F:203:VAL:HB	2:F:212:VAL:HG23	1.87	0.56
3:G:86:VAL:HG21	9:G:301:P6G:H61	1.87	0.56
3:G:127:LEU:HD21	3:G:132:ALA:CB	2.28	0.56
2:F:171:PHE:CZ	3:G:178:SER:HB3	2.40	0.56
3:E:24:ARG:HA	3:E:70:THR:O	2.04	0.56
2:F:14:VAL:HG11	2:F:20:LEU:HD13	1.87	0.56
2:F:85:MET:HB3	2:F:88:LEU:HD21	1.86	0.56
3:G:148:VAL:HG11	3:G:179:SER:CB	2.36	0.56
2:F:41:GLN:HG3	2:F:46:GLY:O	2.06	0.56
1:B:157:GLY:HA3	1:B:255:ALA:O	2.06	0.55
2:H:11:GLY:HA3	2:H:112:THR:CG2	2.33	0.55
3:G:184:SER:HB2	3:G:187:ASP:HB2	1.87	0.55

Continued on next page...

Continued from previous page...

Atom-1	Atom-2	Interatomic distance (Å)	Clash overlap (Å)
1:C:115:ILE:HG13	1:C:133:PHE:CZ	2.41	0.55
2:F:152:PRO:HD2	2:F:207:PRO:CB	2.35	0.55
1:C:117:LYS:HD2	1:C:131:ARG:HG3	1.87	0.55
3:E:21:LEU:HD12	3:E:21:LEU:N	2.22	0.55
3:G:138:LEU:N	3:G:138:LEU:HD12	2.22	0.55
1:A:131:ARG:HA	1:A:131:ARG:NE	2.20	0.55
2:F:52:TYR:CD1	3:G:98:MET:HE3	2.41	0.55
2:D:11:GLY:O	2:D:12:ASN:HB2	2.07	0.55
2:F:143:LEU:HD12	2:F:189:VAL:CG2	2.37	0.55
1:A:100:PHE:CB	1:A:113:LEU:HD13	2.23	0.55
1:B:199:ALA:HA	4:B:301:EDO:C1	2.36	0.55
2:H:75:ASP:OD2	2:H:78:LYS:CE	2.50	0.55
3:E:153:ASP:OD2	3:E:191:HIS:HB3	2.07	0.55
3:L:114:ALA:HB1	3:L:203:LEU:HD21	1.90	0.54
4:F:301:EDO:HO2	3:G:178:SER:HG	1.52	0.54
3:G:122:PRO:HD3	3:G:134:VAL:HG22	1.88	0.54
2:F:129:LEU:CD2	3:G:135:VAL:HG11	2.38	0.54
3:G:143:PRO:HD2	3:G:200:HIS:CE1	2.41	0.54
1:A:156:HIS:HE1	1:A:259:LEU:HD11	1.71	0.54
1:B:100:PHE:CE2	1:B:113:LEU:HD11	2.41	0.54
3:L:96:LEU:HD22	8:L:302:MPD:H4	1.89	0.54
3:G:127:LEU:CD2	3:G:132:ALA:HB2	2.30	0.54
2:F:9:SER:HA	2:F:112:THR:CG2	2.37	0.54
3:G:92:TYR:HA	3:G:98:MET:HG3	1.89	0.54
1:A:92:LEU:O	1:A:93:ILE:HD13	2.07	0.54
2:F:186:VAL:HG11	3:G:137:LEU:CD1	2.38	0.54
8:L:302:MPD:O4	8:L:302:MPD:C1	2.47	0.53
2:D:150:TYR:CE1	2:D:155:VAL:HG13	2.43	0.53
2:F:129:LEU:HD22	3:G:135:VAL:HG11	1.90	0.53
2:F:157:VAL:HA	2:F:202:ASN:O	2.08	0.53
1:A:134:LEU:HD13	1:A:251:GLU:HB2	1.90	0.53
2:H:173:ALA:HA	2:H:183:LEU:HB3	1.89	0.53
3:E:134:VAL:HG12	3:E:150:TRP:CH2	2.43	0.53
3:G:2:ILE:CD1	3:G:27:GLN:HB2	2.39	0.53
1:A:172:THR:HG22	4:A:301:EDO:H11	1.90	0.53
2:F:150:TYR:CZ	2:F:181:TYR:HB2	2.43	0.53
1:B:102:ILE:HD13	1:B:111:VAL:HB	1.89	0.53
1:C:85:GLN:HB3	1:C:96:GLU:HG3	1.91	0.53
2:D:48:GLU:HG2	4:D:302:EDO:H12	1.90	0.53
3:E:193:VAL:HG13	3:E:211:PHE:O	2.09	0.53
2:F:186:VAL:HG21	3:G:137:LEU:HD11	1.91	0.53

Continued on next page...

Continued from previous page...

Atom-1	Atom-2	Interatomic distance (Å)	Clash overlap (Å)
2:D:149:ASP:OD1	2:D:176:GLN:NE2	2.42	0.53
3:L:2:ILE:CB	8:L:302:MPD:H13	2.37	0.52
3:L:153:ASP:O	3:L:154:ASN:HB2	2.08	0.52
2:D:191:SER:HA	2:D:194:LEU:HG	1.91	0.52
3:E:207:VAL:HG12	3:E:208:THR:N	2.24	0.52
2:F:171:PHE:CE2	3:G:178:SER:HB3	2.45	0.52
3:G:163:GLU:HA	3:G:178:SER:O	2.08	0.52
2:F:66:VAL:HB	2:F:70:PHE:HB2	1.91	0.52
3:L:73:THR:OG1	10:L:401:HOH:O	2.18	0.52
2:H:53:ILE:HG22	2:H:72:ILE:CD1	2.38	0.52
3:E:122:PRO:HB2	3:E:127:LEU:CD1	2.34	0.52
2:H:64:ASP:HA	2:H:67:LYS:CD	2.38	0.52
2:D:62:TYR:OH	2:D:71:THR:HA	2.10	0.51
3:E:203:LEU:HD13	3:E:207:VAL:CG2	2.33	0.51
2:F:70:PHE:CE1	2:F:85:MET:HG2	2.45	0.51
1:B:149:PRO:HG2	1:B:175:PHE:CE2	2.45	0.51
2:H:75:ASP:HB3	2:H:78:LYS:HE3	1.91	0.51
3:L:80:GLU:HB3	3:L:81:PRO:HD2	1.91	0.51
3:E:84:PHE:CD2	3:E:108:ILE:HG13	2.44	0.51
1:C:191:GLU:HB2	1:C:245:ILE:CD1	2.40	0.51
3:L:152:VAL:HG13	3:L:194:TYR:CE2	2.46	0.51
1:B:103:TYR:HD2	1:B:255:ALA:HB3	1.75	0.51
3:L:42:GLY:H	7:L:301:P33:H212	1.76	0.51
3:G:198:VAL:O	3:G:206:PRO:HA	2.10	0.51
3:L:153:ASP:HA	3:L:193:VAL:CG2	2.40	0.51
2:H:173:ALA:HB2	2:H:183:LEU:HD23	1.93	0.51
3:L:110:ARG:NH1	3:L:111:THR:O	2.44	0.51
2:H:20:LEU:HD12	2:H:21:ARG:H	1.76	0.51
3:E:106:VAL:O	10:E:401:HOH:O	2.20	0.51
1:C:144:ALA:HB3	1:C:147:GLN:CG	2.41	0.51
3:L:187:ASP:HA	3:L:190:LYS:HD2	1.91	0.51
3:E:140:ASN:HA	3:E:174:THR:OG1	2.11	0.51
1:A:106:ASP:HB2	1:A:236:GLU:OE2	2.10	0.50
3:G:144:ARG:O	3:G:144:ARG:HG2	2.10	0.50
2:D:197:GLN:HA	2:D:197:GLN:OE1	2.11	0.50
3:E:149:GLN:OE1	3:E:197:GLU:HG2	2.11	0.50
3:E:152:VAL:CG1	3:E:194:TYR:CD2	2.93	0.50
1:B:80:PHE:HB2	1:B:100:PHE:HB3	1.94	0.50
2:H:153:GLU:OE2	2:H:173:ALA:HB3	2.12	0.50
4:D:302:EDO:H11	10:D:401:HOH:O	2.12	0.50
3:E:38:GLN:HB2	3:E:48:LEU:HD11	1.94	0.50

Continued on next page...

Continued from previous page...

Atom-1	Atom-2	Interatomic distance (Å)	Clash overlap (Å)
3:E:188:TYR:O	3:E:194:TYR:OH	2.29	0.50
1:C:156:HIS:ND1	1:C:259:LEU:HD21	2.26	0.50
3:L:144:ARG:O	3:L:144:ARG:HG2	2.12	0.49
2:F:35:SER:HB2	2:F:101:VAL:HB	1.94	0.49
3:L:144:ARG:HB2	3:L:175:TYR:CE2	2.46	0.49
2:F:16:PRO:HA	2:F:88:LEU:O	2.13	0.49
1:A:110:VAL:CG2	1:A:238:ALA:HB1	2.43	0.49
1:B:75:ASP:O	1:B:158:LYS:NZ	2.41	0.49
1:C:210:VAL:HG21	1:C:226:HIS:NE2	2.27	0.49
3:L:203:LEU:HD13	3:L:207:VAL:CG2	2.30	0.49
1:B:81:ASP:OD1	1:B:99:GLU:HG3	2.12	0.49
3:E:24:ARG:HB2	3:E:24:ARG:NH1	2.28	0.49
1:C:80:PHE:CD2	1:C:82:PHE:CE1	3.00	0.49
1:C:163:ASP:N	1:C:163:ASP:OD1	2.44	0.49
2:H:11:GLY:N	2:H:112:THR:CG2	2.72	0.49
3:L:127:LEU:O	3:L:185:LYS:HD2	2.13	0.49
2:D:193:SER:O	2:D:196:THR:HG22	2.13	0.49
3:E:183:LEU:HD21	3:E:188:TYR:HA	1.95	0.49
2:D:89:ARG:CB	2:D:91:GLU:OE2	2.61	0.49
1:A:192:GLN:HB3	1:A:252:ILE:HD11	1.94	0.49
2:H:75:ASP:CB	2:H:78:LYS:HE3	2.42	0.49
3:E:177:LEU:HD23	3:E:178:SER:N	2.28	0.49
2:F:20:LEU:O	2:F:85:MET:HB2	2.13	0.49
3:G:149:GLN:OE1	3:G:149:GLN:HA	2.13	0.49
3:L:38:GLN:OE1	3:L:46:ARG:NH1	2.44	0.49
3:G:152:VAL:HG22	3:G:194:TYR:CD1	2.47	0.49
1:C:201:LEU:HD13	1:C:211:ILE:HD11	1.95	0.48
2:D:161:SER:HA	2:D:202:ASN:OD1	2.13	0.48
3:E:131:THR:HG22	3:E:132:ALA:N	2.28	0.48
2:H:21:ARG:HG3	2:H:21:ARG:NH1	2.27	0.48
3:E:163:GLU:HA	3:E:178:SER:O	2.13	0.48
3:E:24:ARG:HB2	3:E:24:ARG:HH11	1.78	0.48
2:F:4:VAL:HG11	2:F:107:ASP:OD2	2.14	0.48
2:F:127:PHE:HD2	2:F:146:LEU:HD23	1.79	0.48
3:E:84:PHE:CG	3:E:108:ILE:HG13	2.49	0.48
2:H:175:LEU:HD12	2:H:176:GLN:N	2.29	0.48
1:C:210:VAL:HG22	1:C:211:ILE:N	2.29	0.48
3:L:34:LEU:HG	3:L:35:ALA:N	2.29	0.48
3:G:150:TRP:CG	3:G:181:LEU:HD12	2.48	0.48
1:A:75:ASP:HB3	1:A:103:TYR:HE1	1.78	0.47
2:H:183:LEU:C	2:H:183:LEU:HD12	2.35	0.47

Continued on next page...

Continued from previous page...

Atom-1	Atom-2	Interatomic distance (Å)	Clash overlap (Å)
2:F:52:TYR:CB	3:G:98:MET:HE1	2.33	0.47
2:H:56:SER:O	2:H:57:SER:HB2	2.14	0.47
2:F:161:SER:HA	2:F:202:ASN:ND2	2.29	0.47
2:H:29:PHE:CE2	2:H:31:PHE:HA	2.49	0.47
3:L:34:LEU:HD22	3:L:72:PHE:CG	2.50	0.47
2:F:4:VAL:HG22	2:F:29:PHE:HD1	1.78	0.47
2:D:3:GLU:HA	2:D:3:GLU:OE1	2.15	0.47
3:E:21:LEU:O	3:E:73:THR:HA	2.15	0.47
2:F:143:LEU:HD12	2:F:189:VAL:HG21	1.95	0.47
2:F:159:TRP:HA	2:F:200:ILE:O	2.15	0.47
3:G:36:TRP:CE2	3:G:74:LEU:HB2	2.50	0.47
3:E:163:GLU:HB2	3:E:177:LEU:HD21	1.95	0.47
1:B:82:PHE:CZ	1:B:98:GLY:HA3	2.50	0.47
3:L:207:VAL:HG12	3:L:208:THR:N	2.29	0.47
3:E:8:PRO:HG3	3:E:11:LEU:HD13	1.95	0.47
3:L:91:HIS:O	3:L:98:MET:HB3	2.14	0.47
3:E:194:TYR:HB2	3:E:211:PHE:CE1	2.50	0.47
2:F:19:SER:OG	2:F:86:ASN:OD1	2.24	0.47
2:F:69:ARG:HD2	2:F:87:SER:O	2.15	0.47
2:F:160:ASN:HA	2:F:200:ILE:HD11	1.96	0.47
3:G:122:PRO:HB2	3:G:127:LEU:HG	1.97	0.47
1:C:191:GLU:HB2	1:C:245:ILE:HD13	1.96	0.47
2:F:122:LYS:NZ	2:F:123:GLY:O	2.47	0.47
3:G:33:TYR:CD1	3:G:93:ASP:HA	2.50	0.47
1:B:103:TYR:CD2	1:B:255:ALA:HB3	2.50	0.47
3:L:34:LEU:HD22	3:L:72:PHE:CB	2.45	0.47
3:E:201:GLN:HG2	3:E:201:GLN:O	2.15	0.47
3:E:183:LEU:HD21	3:E:188:TYR:CA	2.45	0.46
2:F:55:SER:HA	2:F:74:ARG:NH1	2.30	0.46
1:B:142:HIS:HD2	10:B:402:HOH:O	1.97	0.46
1:B:215:THR:O	1:B:216:ARG:HG3	2.15	0.46
2:F:96:TYR:CE1	2:F:114:VAL:CG2	2.98	0.46
3:G:161:SER:HA	3:G:180:THR:O	2.15	0.46
1:B:155:TYR:CE2	1:B:237:ILE:HG23	2.49	0.46
3:L:19:ALA:HB2	3:L:79:LEU:HD11	1.97	0.46
2:F:200:ILE:HD12	2:F:200:ILE:C	2.35	0.46
3:G:144:ARG:HB2	3:G:175:TYR:CE2	2.50	0.46
1:A:118:ILE:HG22	1:A:118:ILE:O	2.15	0.46
1:C:117:LYS:CD	1:C:131:ARG:HG3	2.45	0.46
2:F:69:ARG:HG2	2:F:87:SER:CB	2.44	0.46
3:G:138:LEU:N	3:G:138:LEU:CD1	2.79	0.46

Continued on next page...

Continued from previous page...

Atom-1	Atom-2	Interatomic distance (Å)	Clash overlap (Å)
3:E:14:SER:HB3	3:E:109:LYS:O	2.15	0.46
2:F:52:TYR:HD1	3:G:98:MET:HE3	1.80	0.46
3:L:110:ARG:HD2	3:L:173:SER:HB2	1.98	0.46
3:L:117:VAL:HG12	3:L:209:LYS:HG3	1.98	0.46
3:G:39:GLN:O	3:G:85:ALA:HB1	2.15	0.46
3:G:86:VAL:HG21	9:G:301:P6G:C6	2.45	0.46
3:L:114:ALA:HB1	3:L:203:LEU:HD23	1.96	0.46
2:F:70:PHE:CE2	2:F:85:MET:HG2	2.51	0.46
2:F:93:THR:HG22	2:F:116:VAL:N	2.31	0.46
3:G:2:ILE:HD11	3:G:27:GLN:HB2	1.97	0.46
3:G:38:GLN:HB2	3:G:48:LEU:HD11	1.97	0.45
3:G:55:ARG:HD2	3:G:59:ILE:O	2.17	0.45
3:G:196:CYS:O	3:G:208:THR:HA	2.16	0.45
1:A:75:ASP:HB3	1:A:103:TYR:CE1	2.50	0.45
1:A:156:HIS:ND1	1:A:259:LEU:HG	2.31	0.45
2:F:89:ARG:O	2:F:116:VAL:CG1	2.63	0.45
3:E:144:ARG:HB2	3:E:175:TYR:CE2	2.51	0.45
2:F:150:TYR:CE1	2:F:181:TYR:HB2	2.52	0.45
3:L:97:PRO:HB2	8:L:302:MPD:H31	1.99	0.45
2:F:176:GLN:HG3	2:F:180:LEU:O	2.17	0.45
3:G:130:GLY:HA2	3:G:185:LYS:HB3	1.97	0.45
1:A:156:HIS:CE1	1:A:259:LEU:HD21	2.51	0.45
1:B:199:ALA:CB	4:B:301:EDO:H11	2.46	0.45
3:L:96:LEU:HD22	8:L:302:MPD:C4	2.46	0.45
1:A:101:GLN:NE2	1:A:162:SER:O	2.50	0.45
3:G:15:PRO:HD3	3:G:108:ILE:HG23	1.98	0.45
2:H:14:VAL:CG2	2:H:116:VAL:HG22	2.47	0.45
1:A:95:LEU:N	1:A:95:LEU:CD1	2.79	0.45
1:C:216:ARG:NH1	10:C:405:HOH:O	2.47	0.45
2:H:70:PHE:CE1	2:H:85:MET:HB3	2.52	0.45
3:E:34:LEU:HD22	3:E:90:GLN:O	2.16	0.45
1:A:154:GLU:O	1:A:258:GLN:HA	2.17	0.45
2:H:53:ILE:HG22	2:H:72:ILE:HD11	1.99	0.45
2:D:89:ARG:HB2	2:D:91:GLU:OE2	2.18	0.44
3:G:36:TRP:CD2	3:G:74:LEU:HB2	2.52	0.44
2:H:14:VAL:HG23	2:H:116:VAL:HG22	2.00	0.44
2:H:53:ILE:HG22	2:H:72:ILE:HD13	1.99	0.44
3:L:142:TYR:CG	3:L:143:PRO:HA	2.52	0.44
3:E:12:SER:O	3:E:13:LEU:HD23	2.18	0.44
3:G:152:VAL:HG22	3:G:194:TYR:CE1	2.52	0.44
2:H:11:GLY:CA	2:H:112:THR:CG2	2.94	0.44

Continued on next page...

Continued from previous page...

Atom-1	Atom-2	Interatomic distance (Å)	Clash overlap (Å)
3:E:151:LYS:HE2	3:E:151:LYS:HB3	1.67	0.44
3:E:201:GLN:O	3:E:201:GLN:CG	2.66	0.44
3:L:84:PHE:HA	3:L:106:VAL:HG23	1.99	0.44
3:E:188:TYR:CD2	3:E:194:TYR:CZ	3.05	0.44
3:G:127:LEU:HD23	3:G:127:LEU:HA	1.71	0.44
2:H:11:GLY:O	2:H:12:ASN:HB2	2.17	0.44
2:F:128:PRO:HB3	2:F:216:VAL:CA	2.47	0.44
1:A:78:SER:HB3	1:A:80:PHE:HE1	1.82	0.44
3:E:122:PRO:CG	3:E:127:LEU:HD11	2.47	0.44
2:F:53:ILE:O	2:F:53:ILE:HG23	2.17	0.44
1:A:131:ARG:HA	1:A:131:ARG:HE	1.83	0.44
2:F:56:SER:OG	2:F:58:SER:OG	2.36	0.44
3:G:181:LEU:HD21	3:G:183:LEU:HD21	1.99	0.44
1:B:231:GLY:HA3	1:B:235:GLN:OE1	2.18	0.44
2:F:66:VAL:HG11	2:F:70:PHE:CD2	2.53	0.44
2:F:105:LEU:HD13	3:G:90:GLN:HE22	1.82	0.44
1:A:191:GLU:HB2	1:A:245:ILE:HD11	2.00	0.43
3:L:110:ARG:NH1	3:L:110:ARG:HG3	2.33	0.43
1:A:220:GLU:OE1	1:A:222:LYS:NZ	2.50	0.43
1:C:212:LEU:HD21	1:C:226:HIS:CD2	2.53	0.43
3:G:163:GLU:HB2	3:G:177:LEU:HD21	2.00	0.43
3:L:151:LYS:HA	3:L:155:ALA:O	2.18	0.43
2:D:122:LYS:HD3	2:D:149:ASP:O	2.18	0.43
2:D:173:ALA:HA	2:D:183:LEU:HB3	2.00	0.43
2:F:14:VAL:CG1	2:F:20:LEU:HD13	2.48	0.43
1:C:80:PHE:HD2	1:C:82:PHE:CE1	2.37	0.43
2:H:105:LEU:HD12	2:H:105:LEU:N	2.33	0.43
2:D:189:VAL:HG11	2:D:199:TYR:CE1	2.53	0.43
1:B:114:GLN:OE1	1:B:162:SER:HB2	2.19	0.43
3:E:157:GLN:HE21	3:E:157:GLN:HB2	1.69	0.43
2:F:143:LEU:CD1	2:F:189:VAL:HG21	2.48	0.43
2:F:4:VAL:HA	2:F:28:GLY:HA3	1.99	0.43
2:F:20:LEU:HB3	2:F:85:MET:HE3	2.00	0.43
2:F:160:ASN:N	2:F:200:ILE:HD12	2.32	0.43
3:G:129:SER:O	3:G:185:LYS:HB2	2.19	0.43
1:B:200:GLU:H	4:B:301:EDO:C1	2.31	0.43
2:H:11:GLY:CA	2:H:112:THR:HG22	2.36	0.43
3:L:110:ARG:HG3	3:L:110:ARG:HH11	1.84	0.43
2:F:150:TYR:CZ	2:F:155:VAL:HG11	2.53	0.43
2:F:14:VAL:HG21	2:F:88:LEU:HD12	2.00	0.43
2:F:175:LEU:HD13	2:F:175:LEU:C	2.39	0.43

Continued on next page...

Continued from previous page...

Atom-1	Atom-2	Interatomic distance (Å)	Clash overlap (Å)
2:D:183:LEU:HD12	2:D:183:LEU:C	2.40	0.43
2:F:4:VAL:HA	2:F:27:SER:O	2.18	0.43
2:F:40:ARG:HD3	2:F:96:TYR:CZ	2.54	0.43
3:G:126:GLN:OE1	3:G:133:SER:HB2	2.19	0.43
3:G:208:THR:O	3:G:209:LYS:HG2	2.19	0.43
2:D:206:LYS:N	2:D:207:PRO:CD	2.81	0.42
1:A:99:GLU:O	1:A:113:LEU:HD12	2.19	0.42
1:B:100:PHE:CE2	1:B:113:LEU:CD1	3.02	0.42
2:H:217:GLU:HB2	2:H:218:PRO:CD	2.49	0.42
2:D:153:GLU:HG3	2:D:154:PRO:N	2.34	0.42
2:F:169:HIS:HB2	2:F:186:VAL:HG23	2.01	0.42
1:C:82:PHE:CZ	1:C:99:GLU:OE1	2.72	0.42
3:G:107:GLU:HG3	3:G:175:TYR:OH	2.19	0.42
5:B:302:IMD:N1	3:E:30:SER:OG	2.48	0.42
2:H:14:VAL:O	2:H:116:VAL:HA	2.19	0.42
2:F:40:ARG:HB3	2:F:96:TYR:CD2	2.54	0.42
2:F:216:VAL:O	2:F:216:VAL:HG22	2.19	0.42
1:A:99:GLU:OE2	1:A:162:SER:HB3	2.18	0.42
1:A:100:PHE:HB2	1:A:112:ALA:O	2.20	0.42
1:A:110:VAL:HG12	1:A:111:VAL:N	2.33	0.42
3:G:84:PHE:CG	3:G:108:ILE:HG12	2.55	0.42
3:L:33:TYR:CD1	3:L:93:ASP:HA	2.55	0.42
3:L:144:ARG:CZ	3:L:165:VAL:HG21	2.49	0.42
3:L:168:GLN:HG2	3:L:173:SER:HA	2.01	0.42
3:L:56:ALA:HB3	3:L:59:ILE:HG13	2.02	0.42
2:F:160:ASN:H	2:F:200:ILE:CD1	2.31	0.42
3:G:151:LYS:HG2	3:G:156:LEU:CD1	2.41	0.42
3:G:177:LEU:HD23	3:G:178:SER:CA	2.50	0.42
3:G:181:LEU:CD2	3:G:183:LEU:HD21	2.50	0.42
2:F:199:TYR:O	2:F:215:ARG:O	2.38	0.42
3:G:2:ILE:HD13	3:G:27:GLN:HB2	2.01	0.42
3:L:148:VAL:HG22	3:L:198:VAL:HG22	2.01	0.42
2:F:156:THR:O	2:F:203:VAL:HA	2.19	0.42
2:F:160:ASN:CA	2:F:200:ILE:HD11	2.49	0.42
3:G:38:GLN:HB2	3:G:87:TYR:CE2	2.55	0.42
3:L:153:ASP:OD1	3:L:193:VAL:HG22	2.19	0.41
2:D:29:PHE:CE2	2:D:31:PHE:HA	2.54	0.41
1:A:108:SER:HB3	1:A:230:PHE:CG	2.55	0.41
1:B:142:HIS:CD2	10:B:402:HOH:O	2.72	0.41
2:D:105:LEU:HB2	3:E:37:TYR:OH	2.20	0.41
2:F:173:ALA:HB1	2:F:181:TYR:HB3	2.03	0.41

Continued on next page...

Continued from previous page...

Atom-1	Atom-2	Interatomic distance (Å)	Clash overlap (Å)
1:A:132:SER:C	1:A:133:PHE:CD1	2.94	0.41
1:C:243:VAL:O	1:C:243:VAL:HG13	2.21	0.41
2:F:203:VAL:HB	2:F:212:VAL:CG2	2.50	0.41
1:B:133:PHE:O	1:B:134:LEU:HD22	2.20	0.41
2:H:53:ILE:CG2	2:H:72:ILE:HD13	2.50	0.41
3:E:194:TYR:O	3:E:210:SER:HA	2.21	0.41
1:B:108:SER:HA	1:B:139:GLY:O	2.21	0.41
3:L:42:GLY:N	7:L:301:P33:H212	2.35	0.41
1:C:80:PHE:HA	1:C:100:PHE:O	2.20	0.41
1:C:149:PRO:HG2	1:C:175:PHE:CD2	2.56	0.41
3:L:138:LEU:HD12	3:L:138:LEU:N	2.36	0.41
3:E:112:VAL:HG22	3:E:143:PRO:HD3	2.03	0.41
2:F:169:HIS:HB2	2:F:186:VAL:CG2	2.51	0.41
3:G:107:GLU:HG2	3:G:168:GLN:OE1	2.21	0.41
2:H:4:VAL:HA	2:H:28:GLY:HA3	2.03	0.41
3:E:207:VAL:CG1	3:E:208:THR:N	2.84	0.41
2:F:147:VAL:HB	2:F:183:LEU:CD2	2.45	0.41
1:C:79:ARG:HA	1:C:79:ARG:HD3	1.94	0.40
1:A:227:LEU:HD23	1:A:227:LEU:HA	1.92	0.40
1:B:226:HIS:O	1:B:239:GLY:HA3	2.21	0.40
1:C:80:PHE:HB2	1:C:101:GLN:HG2	2.03	0.40
3:L:188:TYR:HA	3:L:194:TYR:OH	2.21	0.40
3:E:193:VAL:HA	3:E:211:PHE:O	2.22	0.40
2:F:65:SER:O	2:F:69:ARG:NH2	2.50	0.40
3:E:62:ARG:NE	3:E:83:ASP:OD2	2.39	0.40
2:F:124:PRO:CA	2:F:150:TYR:HB3	2.48	0.40
1:B:164:ASP:OD2	1:B:188:LYS:HB2	2.20	0.40
2:H:20:LEU:HD12	2:H:21:ARG:N	2.37	0.40
3:L:35:ALA:HB2	3:L:92:TYR:CE1	2.56	0.40
3:G:10:THR:HG22	3:G:11:LEU:N	2.35	0.40

There are no symmetry-related clashes.

5.3 Torsion angles [i](#)

5.3.1 Protein backbone [i](#)

In the following table, the Percentiles column shows the percent Ramachandran outliers of the chain as a percentile score with respect to all X-ray entries followed by that with respect to entries of similar resolution.

The Analysed column shows the number of residues for which the backbone conformation was analysed, and the total number of residues.

Mol	Chain	Analysed	Favoured	Allowed	Outliers	Percentiles	
1	A	172/260 (66%)	164 (95%)	8 (5%)	0	100	100
1	B	173/260 (66%)	167 (96%)	5 (3%)	1 (1%)	25	35
1	C	169/260 (65%)	162 (96%)	6 (4%)	1 (1%)	25	35
2	D	209/226 (92%)	198 (95%)	10 (5%)	1 (0%)	29	40
2	F	206/226 (91%)	187 (91%)	15 (7%)	4 (2%)	8	9
2	H	212/226 (94%)	207 (98%)	5 (2%)	0	100	100
3	E	212/216 (98%)	197 (93%)	15 (7%)	0	100	100
3	G	200/216 (93%)	187 (94%)	11 (6%)	2 (1%)	15	22
3	L	212/216 (98%)	204 (96%)	7 (3%)	1 (0%)	29	40
All	All	1765/2106 (84%)	1673 (95%)	82 (5%)	10 (1%)	25	35

All (10) Ramachandran outliers are listed below:

Mol	Chain	Res	Type
2	F	154	PRO
2	F	214	LYS
3	L	213	ARG
2	F	216	VAL
3	G	201	GLN
2	F	4	VAL
1	C	188	LYS
2	D	218	PRO
1	B	218	GLY
3	G	69	GLY

5.3.2 Protein sidechains [i](#)

In the following table, the Percentiles column shows the percent sidechain outliers of the chain as a percentile score with respect to all X-ray entries followed by that with respect to entries of similar resolution.

The Analysed column shows the number of residues for which the sidechain conformation was analysed, and the total number of residues.

Mol	Chain	Analysed	Rotameric	Outliers	Percentiles	
1	A	135/207 (65%)	133 (98%)	2 (2%)	65	79

Continued on next page...

Continued from previous page...

Mol	Chain	Analysed	Rotameric	Outliers	Percentiles	
1	B	133/207 (64%)	131 (98%)	2 (2%)	65	79
1	C	129/207 (62%)	126 (98%)	3 (2%)	50	68
2	D	175/189 (93%)	169 (97%)	6 (3%)	37	54
2	F	168/189 (89%)	159 (95%)	9 (5%)	22	34
2	H	180/189 (95%)	178 (99%)	2 (1%)	73	86
3	E	180/187 (96%)	173 (96%)	7 (4%)	32	49
3	G	175/187 (94%)	171 (98%)	4 (2%)	50	68
3	L	183/187 (98%)	179 (98%)	4 (2%)	52	69
All	All	1458/1749 (83%)	1419 (97%)	39 (3%)	44	63

All (39) residues with a non-rotameric sidechain are listed below:

Mol	Chain	Res	Type
1	A	131	ARG
1	A	150	ASP
1	B	132	SER
1	B	247	GLU
1	C	185	GLU
1	C	219	SER
1	C	232	ASP
2	H	133	SER
2	H	196	THR
3	L	28	SER
3	L	98	MET
3	L	111	THR
3	L	165	VAL
2	D	56	SER
2	D	91	GLU
2	D	166	SER
2	D	182	SER
2	D	201	CYS
2	D	219	LYS
3	E	12	SER
3	E	22	SER
3	E	24	ARG
3	E	116	SER
3	E	157	GLN
3	E	182	THR
3	E	183	LEU

Continued on next page...

Continued from previous page...

Mol	Chain	Res	Type
2	F	3	GLU
2	F	87	SER
2	F	91	GLU
2	F	118	SER
2	F	125	SER
2	F	143	LEU
2	F	164	LEU
2	F	183	LEU
2	F	188	THR
3	G	22	SER
3	G	26	SER
3	G	64	SER
3	G	182	THR

Sometimes sidechains can be flipped to improve hydrogen bonding and reduce clashes. There are no such sidechains identified.

5.3.3 RNA [i](#)

There are no RNA molecules in this entry.

5.4 Non-standard residues in protein, DNA, RNA chains [i](#)

There are no non-standard protein/DNA/RNA residues in this entry.

5.5 Carbohydrates [i](#)

There are no monosaccharides in this entry.

5.6 Ligand geometry [i](#)

11 ligands are modelled in this entry.

In the following table, the Counts columns list the number of bonds (or angles) for which Mogul statistics could be retrieved, the number of bonds (or angles) that are observed in the model and the number of bonds (or angles) that are defined in the Chemical Component Dictionary. The Link column lists molecule types, if any, to which the group is linked. The Z score for a bond length (or angle) is the number of standard deviations the observed value is removed from the expected value. A bond length (or angle) with $|Z| > 2$ is considered an outlier worth inspection. RMSZ is the root-mean-square of all Z scores of the bond lengths (or angles).

Mol	Type	Chain	Res	Link	Bond lengths			Bond angles		
					Counts	RMSZ	# Z > 2	Counts	RMSZ	# Z > 2
6	SO4	C	301	-	4,4,4	0.12	0	6,6,6	0.46	0
4	EDO	D	301	-	3,3,3	0.57	0	2,2,2	0.16	0
7	P33	L	301	-	21,21,21	0.53	0	20,20,20	0.63	1 (5%)
5	IMD	B	302	-	3,5,5	0.95	0	4,5,5	0.49	0
4	EDO	E	301	-	3,3,3	0.50	0	2,2,2	0.18	0
4	EDO	A	301	-	3,3,3	0.53	0	2,2,2	0.47	0
4	EDO	D	302	-	3,3,3	0.59	0	2,2,2	0.31	0
8	MPD	L	302	-	7,7,7	0.84	0	9,10,10	1.01	1 (11%)
4	EDO	F	301	-	3,3,3	0.49	0	2,2,2	0.24	0
9	P6G	G	301	-	18,18,18	0.55	0	17,17,17	0.37	0
4	EDO	B	301	-	3,3,3	0.53	0	2,2,2	0.28	0

In the following table, the Chirals column lists the number of chiral outliers, the number of chiral centers analysed, the number of these observed in the model and the number defined in the Chemical Component Dictionary. Similar counts are reported in the Torsion and Rings columns. '-' means no outliers of that kind were identified.

Mol	Type	Chain	Res	Link	Chirals	Torsions	Rings
4	EDO	D	301	-	-	1/1/1/1	-
7	P33	L	301	-	-	10/19/19/19	-
5	IMD	B	302	-	-	-	0/1/1/1
4	EDO	E	301	-	-	0/1/1/1	-
4	EDO	A	301	-	-	1/1/1/1	-
4	EDO	D	302	-	-	1/1/1/1	-
8	MPD	L	302	-	-	3/5/5/5	-
4	EDO	F	301	-	-	0/1/1/1	-
9	P6G	G	301	-	-	9/16/16/16	-
4	EDO	B	301	-	-	1/1/1/1	-

There are no bond length outliers.

All (2) bond angle outliers are listed below:

Mol	Chain	Res	Type	Atoms	Z	Observed(°)	Ideal(°)
8	L	302	MPD	CM-C2-C1	-2.64	105.08	110.57
7	L	301	P33	O10-C9-C8	-2.06	101.11	110.39

There are no chirality outliers.

All (26) torsion outliers are listed below:

Mol	Chain	Res	Type	Atoms
7	L	301	P33	O16-C17-C18-O19
7	L	301	P33	O1-C2-C3-O4
9	G	301	P6G	O7-C8-C9-O10
7	L	301	P33	O4-C5-C6-O7
4	A	301	EDO	O1-C1-C2-O2
9	G	301	P6G	O10-C11-C12-O13
4	D	301	EDO	O1-C1-C2-O2
4	D	302	EDO	O1-C1-C2-O2
7	L	301	P33	O13-C14-C15-O16
7	L	301	P33	C2-C3-O4-C5
7	L	301	P33	C9-C8-O7-C6
8	L	302	MPD	C2-C3-C4-O4
8	L	302	MPD	CM-C2-C3-C4
7	L	301	P33	O10-C11-C12-O13
4	B	301	EDO	O1-C1-C2-O2
9	G	301	P6G	C5-C6-O7-C8
9	G	301	P6G	O1-C2-C3-O4
9	G	301	P6G	O16-C17-C18-O19
7	L	301	P33	C5-C6-O7-C8
9	G	301	P6G	C8-C9-O10-C11
9	G	301	P6G	C9-C8-O7-C6
9	G	301	P6G	O4-C5-C6-O7
7	L	301	P33	O7-C8-C9-O10
7	L	301	P33	C6-C5-O4-C3
9	G	301	P6G	O13-C14-C15-O16
8	L	302	MPD	C2-C3-C4-C5

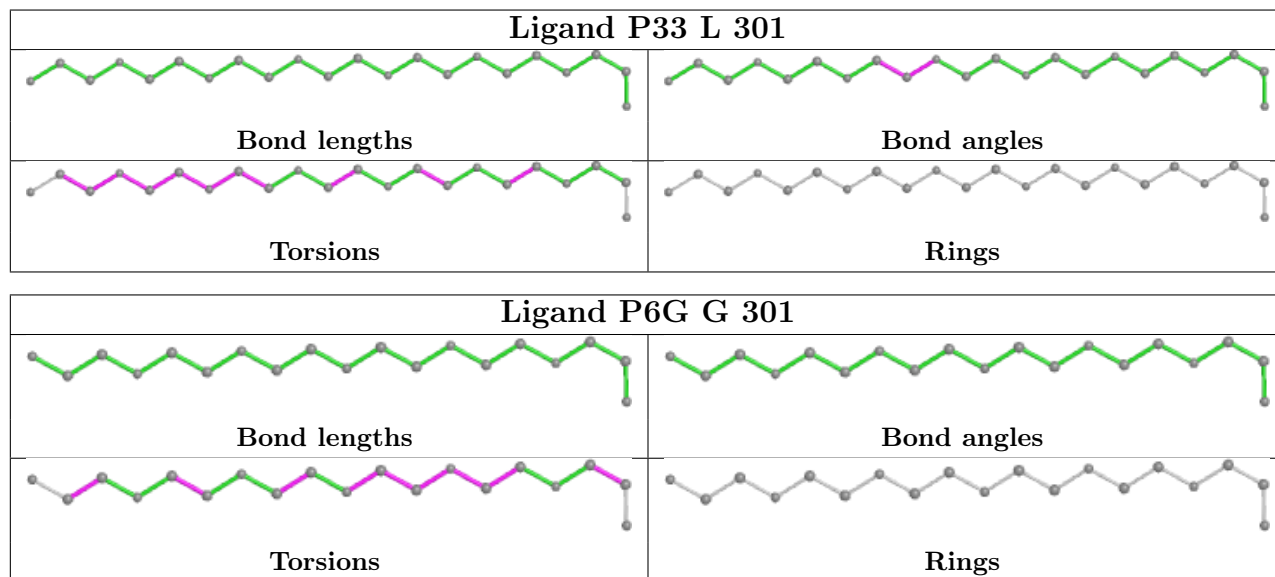
There are no ring outliers.

9 monomers are involved in 28 short contacts:

Mol	Chain	Res	Type	Clashes	Symm-Clashes
4	D	301	EDO	1	0
7	L	301	P33	3	0
5	B	302	IMD	2	0
4	A	301	EDO	1	0
4	D	302	EDO	3	0
8	L	302	MPD	8	0
4	F	301	EDO	2	0
9	G	301	P6G	3	0
4	B	301	EDO	5	0

The following is a two-dimensional graphical depiction of Mogul quality analysis of bond lengths, bond angles, torsion angles, and ring geometry for all instances of the Ligand of Interest. In

addition, ligands with molecular weight > 250 and outliers as shown on the validation Tables will also be included. For torsion angles, if less than 5% of the Mogul distribution of torsion angles is within 10 degrees of the torsion angle in question, then that torsion angle is considered an outlier. Any bond that is central to one or more torsion angles identified as an outlier by Mogul will be highlighted in the graph. For rings, the root-mean-square deviation (RMSD) between the ring in question and similar rings identified by Mogul is calculated over all ring torsion angles. If the average RMSD is greater than 60 degrees and the minimal RMSD between the ring in question and any Mogul-identified rings is also greater than 60 degrees, then that ring is considered an outlier. The outliers are highlighted in purple. The color gray indicates Mogul did not find sufficient equivalents in the CSD to analyse the geometry.



5.7 Other polymers [i](#)

There are no such residues in this entry.

5.8 Polymer linkage issues [i](#)

There are no chain breaks in this entry.

6 Fit of model and data

6.1 Protein, DNA and RNA chains

In the following table, the column labelled ‘#RSRZ > 2’ contains the number (and percentage) of RSRZ outliers, followed by percent RSRZ outliers for the chain as percentile scores relative to all X-ray entries and entries of similar resolution. The OWAB column contains the minimum, median, 95th percentile and maximum values of the occupancy-weighted average B-factor per residue. The column labelled ‘Q < 0.9’ lists the number of (and percentage) of residues with an average occupancy less than 0.9.

Mol	Chain	Analysed	<RSRZ>	#RSRZ>2	OWAB(Å ²)	Q<0.9
1	A	176/260 (67%)	-0.09	3 (1%) 70 67	40, 62, 86, 101	4 (2%)
1	B	176/260 (67%)	-0.09	0 100 100	42, 61, 82, 95	2 (1%)
1	C	173/260 (66%)	0.02	3 (1%) 70 67	48, 68, 89, 103	5 (2%)
2	D	213/226 (94%)	-0.00	2 (0%) 84 82	41, 61, 80, 100	3 (1%)
2	F	210/226 (92%)	0.37	23 (10%) 5 4	47, 79, 111, 118	5 (2%)
2	H	216/226 (95%)	-0.01	1 (0%) 91 89	39, 54, 74, 92	2 (0%)
3	E	214/216 (99%)	0.02	8 (3%) 41 40	42, 62, 98, 108	1 (0%)
3	G	206/216 (95%)	0.35	14 (6%) 17 15	50, 69, 106, 113	5 (2%)
3	L	214/216 (99%)	-0.17	0 100 100	38, 58, 79, 90	2 (0%)
All	All	1798/2106 (85%)	0.05	54 (3%) 50 48	38, 63, 100, 118	29 (1%)

All (54) RSRZ outliers are listed below:

Mol	Chain	Res	Type	RSRZ
2	F	131	PRO	6.1
2	F	143	LEU	5.3
3	G	198	VAL	4.8
3	G	186	ALA	4.7
2	F	187	VAL	4.7
2	F	126	VAL	4.2
3	G	210	SER	4.1
3	G	194	TYR	4.1
2	F	194	LEU	3.9
2	F	196	THR	3.5
1	C	259	LEU	3.4
1	C	118	ILE	3.3
2	F	213	ASP	3.3
3	G	123	SER	3.3
2	F	212	VAL	3.2

Continued on next page...

Continued from previous page...

Mol	Chain	Res	Type	RSRZ
3	G	211	PHE	3.2
2	F	199	TYR	3.0
2	H	136	THR	2.9
2	F	128	PRO	2.9
3	G	212	ASN	2.8
3	G	137	LEU	2.8
2	F	198	THR	2.7
2	D	220	SER	2.7
3	G	148	VAL	2.7
2	F	193	SER	2.7
3	G	118	PHE	2.6
2	F	215	ARG	2.6
2	F	218	PRO	2.6
2	F	164	LEU	2.4
2	F	145	CYS	2.4
1	A	119	ASN	2.4
3	E	194	TYR	2.4
1	A	75	ASP	2.4
3	E	193	VAL	2.4
2	F	217	GLU	2.4
3	E	211	PHE	2.3
3	E	158	SER	2.3
3	E	149	GLN	2.3
3	E	188	TYR	2.3
2	D	195	GLY	2.3
2	F	127	PHE	2.2
3	E	183	LEU	2.2
1	A	259	LEU	2.2
3	E	186	ALA	2.2
2	F	195	GLY	2.2
1	C	260	GLU	2.2
3	G	200	HIS	2.1
2	F	216	VAL	2.1
2	F	161	SER	2.1
2	F	185	SER	2.1
3	G	135	VAL	2.1
3	G	180	THR	2.1
3	G	120	PHE	2.0
2	F	142	ALA	2.0

6.2 Non-standard residues in protein, DNA, RNA chains [i](#)

There are no non-standard protein/DNA/RNA residues in this entry.

6.3 Carbohydrates [i](#)

There are no monosaccharides in this entry.

6.4 Ligands [i](#)

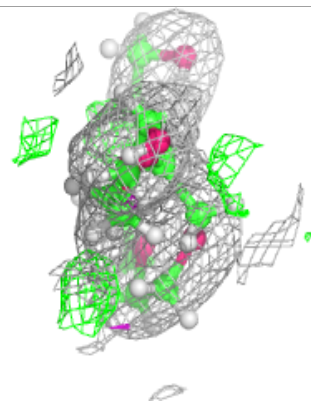
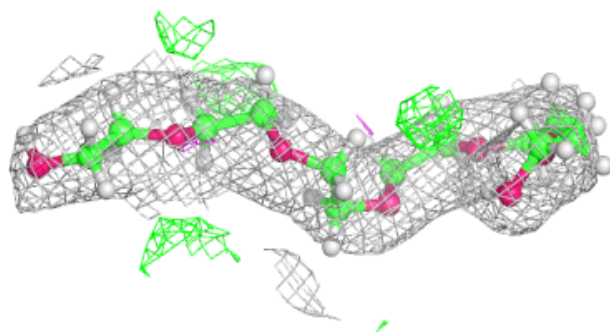
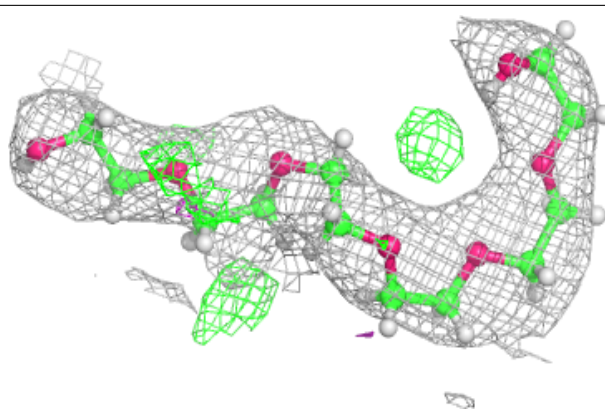
In the following table, the Atoms column lists the number of modelled atoms in the group and the number defined in the chemical component dictionary. The B-factors column lists the minimum, median, 95th percentile and maximum values of B factors of atoms in the group. The column labelled 'Q< 0.9' lists the number of atoms with occupancy less than 0.9.

Mol	Type	Chain	Res	Atoms	RSCC	RSR	B-factors(Å ²)	Q<0.9
4	EDO	B	301	4/4	0.84	0.38	54,65,74,74	0
4	EDO	E	301	4/4	0.84	0.23	68,81,88,95	0
4	EDO	A	301	4/4	0.87	0.38	49,58,70,71	0
9	P6G	G	301	19/19	0.88	0.16	60,84,100,102	0
4	EDO	D	302	4/4	0.89	0.42	54,65,67,68	0
4	EDO	F	301	4/4	0.91	0.22	94,113,114,119	0
8	MPD	L	302	8/8	0.92	0.26	45,56,72,72	0
7	P33	L	301	22/22	0.93	0.12	47,63,82,85	0
5	IMD	B	302	5/5	0.95	0.15	51,60,69,72	0
4	EDO	D	301	4/4	0.95	0.27	50,60,65,66	0
6	SO4	C	301	5/5	0.96	0.08	65,70,79,81	0

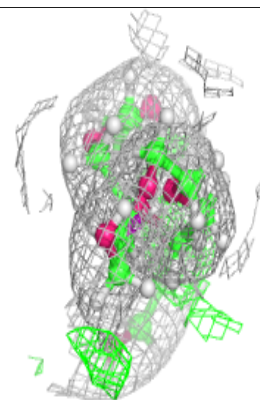
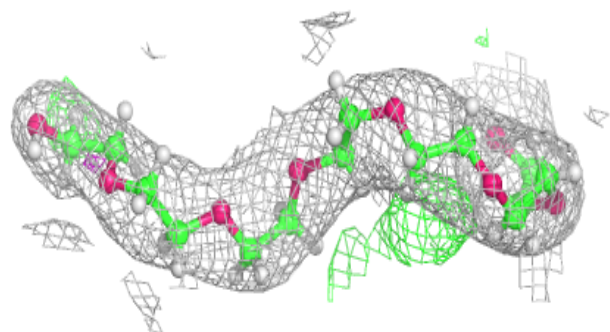
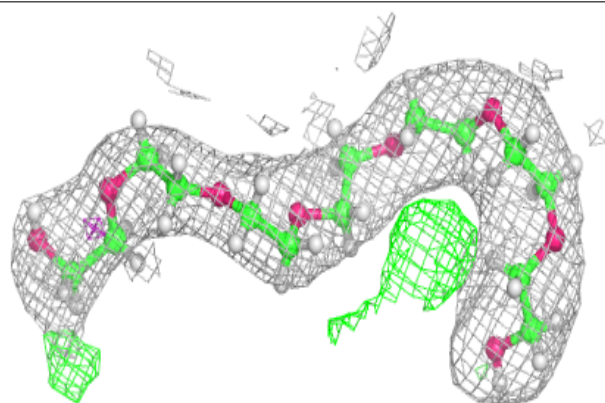
The following is a graphical depiction of the model fit to experimental electron density of all instances of the Ligand of Interest. In addition, ligands with molecular weight > 250 and outliers as shown on the geometry validation Tables will also be included. Each fit is shown from different orientation to approximate a three-dimensional view.

Electron density around P6G G 301:

$2mF_o-DF_c$ (at 0.7 rmsd) in gray
 mF_o-DF_c (at 3 rmsd) in purple (negative)
and green (positive)

**Electron density around P33 L 301:**

$2mF_o-DF_c$ (at 0.7 rmsd) in gray
 mF_o-DF_c (at 3 rmsd) in purple (negative)
and green (positive)



6.5 Other polymers [i](#)

There are no such residues in this entry.