



Full wwPDB X-ray Structure Validation Report ⓘ

May 24, 2020 – 04:33 am BST

PDB ID : 4BMN
Title : apo structure of short-chain alcohol dehydrogenase from *Ralstonia* sp. DSM 6428
Authors : Man, H.; Kulig, J.; Rother, D.; Grogan, G.
Deposited on : 2013-05-10
Resolution : 1.50 Å(reported)

This is a Full wwPDB X-ray Structure Validation Report for a publicly released PDB entry.

We welcome your comments at validation@mail.wwpdb.org

A user guide is available at

<https://www.wwpdb.org/validation/2017/XrayValidationReportHelp>

with specific help available everywhere you see the ⓘ symbol.

The following versions of software and data (see [references ⓘ](#)) were used in the production of this report:

MolProbity : 4.02b-467
Mogul : 1.8.5 (274361), CSD as541be (2020)
Xtriage (Phenix) : 1.13
EDS : 2.11
Percentile statistics : 20191225.v01 (using entries in the PDB archive December 25th 2019)
Refmac : 5.8.0158
CCP4 : 7.0.044 (Gargrove)
Ideal geometry (proteins) : Engh & Huber (2001)
Ideal geometry (DNA, RNA) : Parkinson et al. (1996)
Validation Pipeline (wwPDB-VP) : 2.11

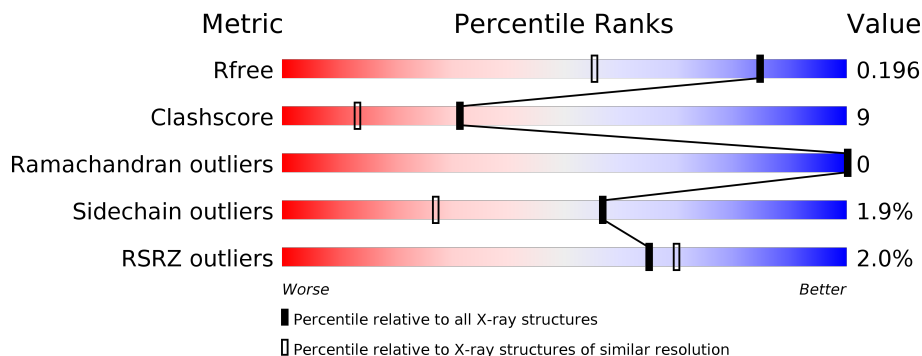
1 Overall quality at a glance

The following experimental techniques were used to determine the structure:

X-RAY DIFFRACTION

The reported resolution of this entry is 1.50 Å.

Percentile scores (ranging between 0-100) for global validation metrics of the entry are shown in the following graphic. The table shows the number of entries on which the scores are based.



Metric	Whole archive (#Entries)	Similar resolution (#Entries, resolution range(Å))
R_{free}	130704	2936 (1.50-1.50)
Clashscore	141614	3144 (1.50-1.50)
Ramachandran outliers	138981	3066 (1.50-1.50)
Sidechain outliers	138945	3064 (1.50-1.50)
RSRZ outliers	127900	2884 (1.50-1.50)

The table below summarises the geometric issues observed across the polymeric chains and their fit to the electron density. The red, orange, yellow and green segments on the lower bar indicate the fraction of residues that contain outliers for ≥ 3 , 2, 1 and 0 types of geometric quality criteria respectively. A grey segment represents the fraction of residues that are not modelled. The numeric value for each fraction is indicated below the corresponding segment, with a dot representing fractions $\leq 5\%$. The upper red bar (where present) indicates the fraction of residues that have poor fit to the electron density. The numeric value is given above the bar.

Mol	Chain	Length	Quality of chain
1	A	253	 3% 81% 9% 8%
1	B	253	 0% 80% 8% 9%
1	C	253	 0% 79% 12% 6%
1	D	253	 2% 80% 9% 9%

The following table lists non-polymeric compounds, carbohydrate monomers and non-standard residues in protein, DNA, RNA chains that are outliers for geometric or electron-density-fit crite-

ria:

Mol	Type	Chain	Res	Chirality	Geometry	Clashes	Electron density
2	EDO	B	1250	-	-	X	-
2	EDO	C	1252	-	-	X	-
2	EDO	D	1251	-	-	X	-
3	TAM	C	1250	-	-	X	-

2 Entry composition i

There are 4 unique types of molecules in this entry. The entry contains 7832 atoms, of which 0 are hydrogens and 0 are deuteriums.

In the tables below, the ZeroOcc column contains the number of atoms modelled with zero occupancy, the AltConf column contains the number of residues with at least one atom in alternate conformation and the Trace column contains the number of residues modelled with at most 2 atoms.

- Molecule 1 is a protein called ALCLOHOL DEHYDROGENASE/SHORT-CHAIN DEHYDROGENASE.

Mol	Chain	Residues	Atoms					ZeroOcc	AltConf	Trace
			Total	C	N	O	S			
1	A	232	Total 1724	C 1092	N 305	O 326	S 1	0	1	0
1	B	231	Total 1709	C 1083	N 302	O 323	S 1	0	1	0
1	C	237	Total 1800	C 1138	N 318	O 343	S 1	0	6	0
1	D	229	Total 1709	C 1080	N 304	O 325		0	2	0

There are 16 discrepancies between the modelled and reference sequences:

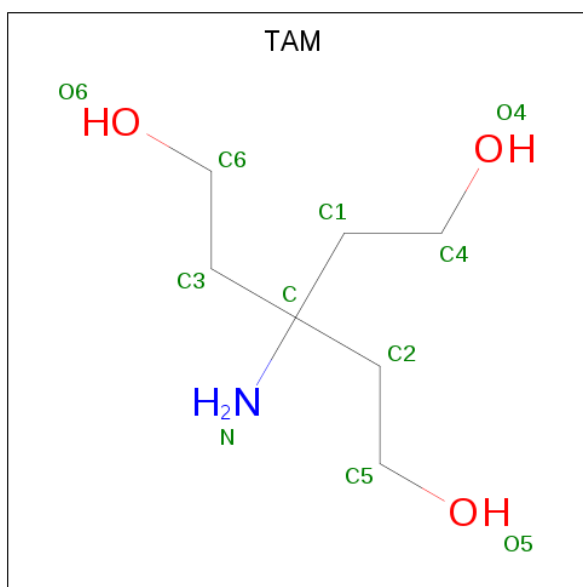
Chain	Residue	Modelled	Actual	Comment	Reference
A	-3	GLN	-	expression tag	UNP C0IR58
A	-2	GLY	-	expression tag	UNP C0IR58
A	-1	PRO	-	expression tag	UNP C0IR58
A	0	ALA	-	expression tag	UNP C0IR58
B	-3	GLN	-	expression tag	UNP C0IR58
B	-2	GLY	-	expression tag	UNP C0IR58
B	-1	PRO	-	expression tag	UNP C0IR58
B	0	ALA	-	expression tag	UNP C0IR58
C	-3	GLN	-	expression tag	UNP C0IR58
C	-2	GLY	-	expression tag	UNP C0IR58
C	-1	PRO	-	expression tag	UNP C0IR58
C	0	ALA	-	expression tag	UNP C0IR58
D	-3	GLN	-	expression tag	UNP C0IR58
D	-2	GLY	-	expression tag	UNP C0IR58
D	-1	PRO	-	expression tag	UNP C0IR58
D	0	ALA	-	expression tag	UNP C0IR58

- Molecule 2 is 1,2-ETHANEDIOL (three-letter code: EDO) (formula: C₂H₆O₂).



Mol	Chain	Residues	Atoms	ZeroOcc	AltConf
2	A	1	Total C O 4 2 2	0	0
2	B	1	Total C O 4 2 2	0	0
2	B	1	Total C O 4 2 2	0	0
2	C	1	Total C O 4 2 2	0	0
2	C	1	Total C O 4 2 2	0	0
2	D	1	Total C O 4 2 2	0	0
2	D	1	Total C O 4 2 2	0	0
2	D	1	Total C O 4 2 2	0	0

- Molecule 3 is TRIS(HYDROXYETHYL)AMINOMETHANE (three-letter code: TAM) (formula: $C_7H_{17}NO_3$).



Mol	Chain	Residues	Atoms				ZeroOcc	AltConf
			Total	C	N	O		
3	C	1	11	7	1	3	0	0

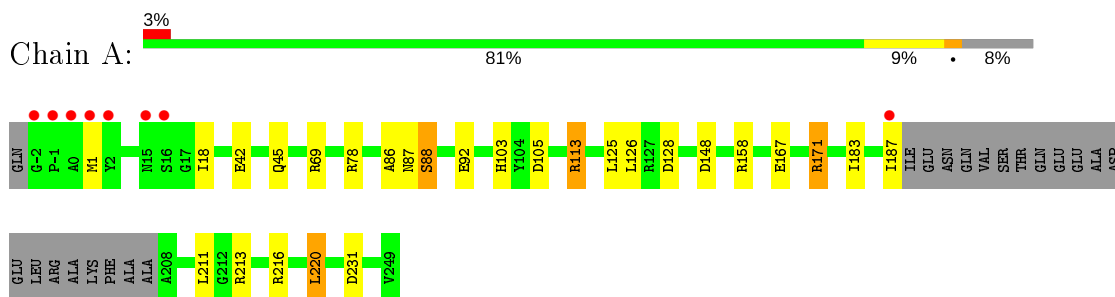
- Molecule 4 is water.

Mol	Chain	Residues	Atoms		ZeroOcc	AltConf
4	A	245	Total	O	0	0
			245	245		
4	B	230	Total	O	0	0
			230	230		
4	C	202	Total	O	0	0
			202	202		
4	D	170	Total	O	0	0
			170	170		

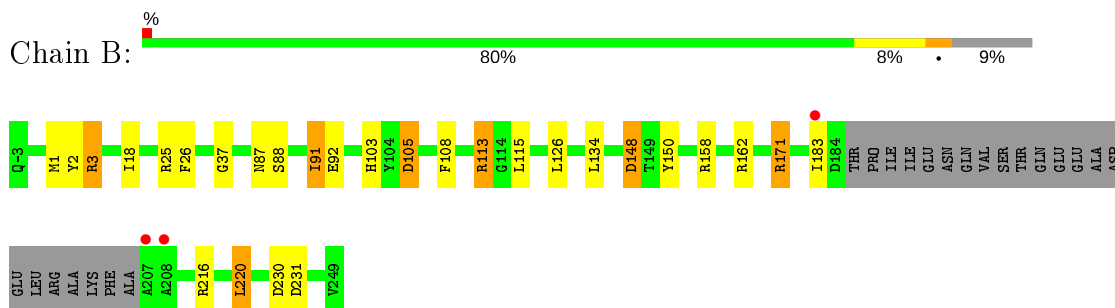
3 Residue-property plots [i](#)

These plots are drawn for all protein, RNA and DNA chains in the entry. The first graphic for a chain summarises the proportions of the various outlier classes displayed in the second graphic. The second graphic shows the sequence view annotated by issues in geometry and electron density. Residues are color-coded according to the number of geometric quality criteria for which they contain at least one outlier: green = 0, yellow = 1, orange = 2 and red = 3 or more. A red dot above a residue indicates a poor fit to the electron density ($RSRZ > 2$). Stretches of 2 or more consecutive residues without any outlier are shown as a green connector. Residues present in the sample, but not in the model, are shown in grey.

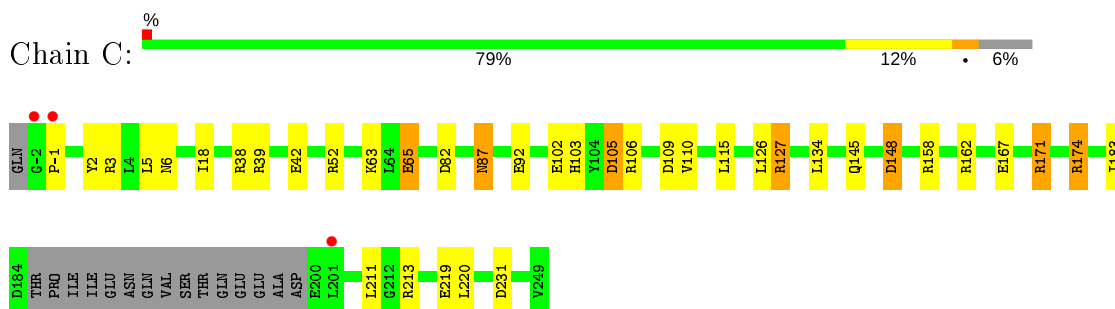
- Molecule 1: ALCLOHOL DEHYDROGENASE/SHORT-CHAIN DEHYDROGENASE



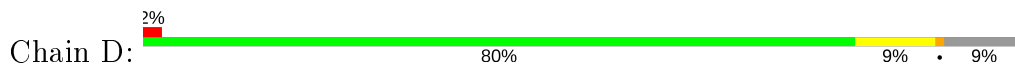
- Molecule 1: ALCLOHOL DEHYDROGENASE/SHORT-CHAIN DEHYDROGENASE

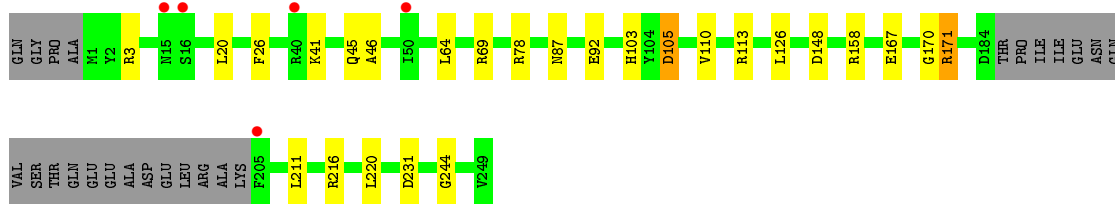


- Molecule 1: ALCLOHOL DEHYDROGENASE/SHORT-CHAIN DEHYDROGENASE



- Molecule 1: ALCLOHOL DEHYDROGENASE/SHORT-CHAIN DEHYDROGENASE





4 Data and refinement statistics

Property	Value	Source
Space group	C 1 2 1	Depositor
Cell constants a, b, c, α , β , γ	136.48 Å 52.51 Å 151.47 Å 90.00° 116.57° 90.00°	Depositor
Resolution (Å)	60.86 – 1.50 60.86 – 1.38	Depositor EDS
% Data completeness (in resolution range)	96.9 (60.86-1.50) 91.5 (60.86-1.38)	Depositor EDS
R_{merge}	0.03	Depositor
R_{sym}	(Not available)	Depositor
$\langle I/\sigma(I) \rangle$ ¹	2.34 (at 1.38 Å)	Xtrriage
Refinement program	REFMAC 5.8.0033	Depositor
R, R_{free}	0.158 , 0.188 0.170 , 0.196	Depositor DCC
R_{free} test set	9012 reflections (5.01%)	wwPDB-VP
Wilson B-factor (Å ²)	16.3	Xtrriage
Anisotropy	0.577	Xtrriage
Bulk solvent k_{sol} (e/Å ³), B_{sol} (Å ²)	0.32 , 40.8	EDS
L-test for twinning ²	$\langle L \rangle = 0.49$, $\langle L^2 \rangle = 0.32$	Xtrriage
Estimated twinning fraction	0.012 for h,-k,-h-l	Xtrriage
F_o, F_c correlation	0.97	EDS
Total number of atoms	7832	wwPDB-VP
Average B, all atoms (Å ²)	22.0	wwPDB-VP

Xtrriage's analysis on translational NCS is as follows: *The largest off-origin peak in the Patterson function is 5.53% of the height of the origin peak. No significant pseudotranslation is detected.*

¹ Intensities estimated from amplitudes.

² Theoretical values of $\langle |L| \rangle$, $\langle L^2 \rangle$ for acentric reflections are 0.5, 0.333 respectively for untwinned datasets, and 0.375, 0.2 for perfectly twinned datasets.

5 Model quality [i](#)

5.1 Standard geometry [i](#)

Bond lengths and bond angles in the following residue types are not validated in this section: TAM, EDO

The Z score for a bond length (or angle) is the number of standard deviations the observed value is removed from the expected value. A bond length (or angle) with $|Z| > 5$ is considered an outlier worth inspection. RMSZ is the root-mean-square of all Z scores of the bond lengths (or angles).

Mol	Chain	Bond lengths		Bond angles	
		RMSZ	# Z >5	RMSZ	# Z >5
1	A	1.09	0/1749	1.16	8/2371 (0.3%)
1	B	1.08	1/1730 (0.1%)	1.17	11/2344 (0.5%)
1	C	1.09	2/1828 (0.1%)	1.18	12/2478 (0.5%)
1	D	1.01	0/1729	1.09	8/2342 (0.3%)
All	All	1.07	3/7036 (0.0%)	1.15	39/9535 (0.4%)

Chiral center outliers are detected by calculating the chiral volume of a chiral center and verifying if the center is modelled as a planar moiety or with the opposite hand. A planarity outlier is detected by checking planarity of atoms in a peptide group, atoms in a mainchain group or atoms of a sidechain that are expected to be planar.

Mol	Chain	#Chirality outliers	#Planarity outliers
1	C	0	2

All (3) bond length outliers are listed below:

Mol	Chain	Res	Type	Atoms	Z	Observed(Å)	Ideal(Å)
1	B	108	PHE	CG-CD1	-5.76	1.30	1.38
1	C	65	GLU	CD-OE1	5.68	1.31	1.25
1	C	167	GLU	CD-OE2	5.07	1.31	1.25

All (39) bond angle outliers are listed below:

Mol	Chain	Res	Type	Atoms	Z	Observed(°)	Ideal(°)
1	B	3	ARG	NE-CZ-NH2	-10.86	114.87	120.30
1	C	162	ARG	NE-CZ-NH1	10.27	125.44	120.30
1	B	162	ARG	NE-CZ-NH2	-10.23	115.18	120.30
1	B	162	ARG	NE-CZ-NH1	8.44	124.52	120.30
1	C	162	ARG	NE-CZ-NH2	-8.23	116.18	120.30
1	A	231	ASP	CB-CG-OD2	-8.23	110.89	118.30

Continued on next page...

Continued from previous page...

Mol	Chain	Res	Type	Atoms	Z	Observed(°)	Ideal(°)
1	C	171	ARG	NE-CZ-NH2	-8.21	116.19	120.30
1	C	231	ASP	CB-CG-OD2	-7.87	111.21	118.30
1	A	171	ARG	NE-CZ-NH2	-7.47	116.56	120.30
1	D	171	ARG	NE-CZ-NH2	-7.05	116.78	120.30
1	D	231	ASP	CB-CG-OD2	-6.63	112.34	118.30
1	A	213	ARG	NE-CZ-NH2	-6.50	117.05	120.30
1	C	174	ARG	NE-CZ-NH2	-6.40	117.10	120.30
1	B	3	ARG	NE-CZ-NH1	6.20	123.40	120.30
1	A	105	ASP	CB-CG-OD1	5.96	123.67	118.30
1	C	105	ASP	CB-CG-OD1	5.87	123.58	118.30
1	A	128	ASP	CB-CG-OD1	5.85	123.57	118.30
1	D	26	PHE	CB-CG-CD2	-5.85	116.70	120.80
1	D	3	ARG	NE-CZ-NH2	-5.83	117.38	120.30
1	C	109	ASP	CB-CG-OD2	-5.83	113.05	118.30
1	A	216	ARG	NE-CZ-NH1	5.79	123.19	120.30
1	B	171	ARG	NE-CZ-NH2	-5.77	117.41	120.30
1	D	105	ASP	CB-CG-OD1	5.75	123.48	118.30
1	D	216	ARG	NE-CZ-NH1	5.75	123.18	120.30
1	B	216	ARG	NE-CZ-NH1	5.71	123.16	120.30
1	B	105	ASP	CB-CG-OD1	5.68	123.42	118.30
1	D	171	ARG	NE-CZ-NH1	5.49	123.04	120.30
1	C	38	ARG	NE-CZ-NH2	-5.46	117.57	120.30
1	A	86	ALA	CB-CA-C	5.43	118.24	110.10
1	B	26	PHE	CB-CG-CD2	-5.40	117.02	120.80
1	C	211	LEU	CB-CG-CD2	5.29	119.98	111.00
1	D	216	ARG	NE-CZ-NH2	-5.25	117.67	120.30
1	A	113	ARG	NE-CZ-NH2	-5.22	117.69	120.30
1	B	113	ARG	NE-CZ-NH1	5.22	122.91	120.30
1	B	91	ILE	CB-CA-C	-5.14	101.32	111.60
1	B	25	ARG	NE-CZ-NH2	-5.10	117.75	120.30
1	C	127	ARG	NE-CZ-NH2	-5.03	117.78	120.30
1	C	2	TYR	CB-CG-CD1	5.02	124.01	121.00
1	C	213	ARG	NE-CZ-NH2	-5.01	117.79	120.30

There are no chirality outliers.

All (2) planarity outliers are listed below:

Mol	Chain	Res	Type	Group
1	C	87	ASN	Mainchain

5.2 Too-close contacts [i](#)

In the following table, the Non-H and H(model) columns list the number of non-hydrogen atoms and hydrogen atoms in the chain respectively. The H(added) column lists the number of hydrogen atoms added and optimized by MolProbity. The Clashes column lists the number of clashes within the asymmetric unit, whereas Symm-Clashes lists symmetry related clashes.

Mol	Chain	Non-H	H(model)	H(added)	Clashes	Symm-Clashes
1	A	1724	0	1764	18	0
1	B	1709	0	1731	32	0
1	C	1800	0	1836	54	0
1	D	1709	0	1728	20	0
2	A	4	0	6	1	0
2	B	8	0	12	10	0
2	C	8	0	12	4	0
2	D	12	0	18	11	0
3	C	11	0	16	13	0
4	A	245	0	0	7	0
4	B	230	0	0	6	0
4	C	202	0	0	7	1
4	D	170	0	0	6	0
All	All	7832	0	7123	127	1

The all-atom clashscore is defined as the number of clashes found per 1000 atoms (including hydrogen atoms). The all-atom clashscore for this structure is 9.

All (127) close contacts within the same asymmetric unit are listed below, sorted by their clash magnitude.

Atom-1	Atom-2	Interatomic distance (Å)	Clash overlap (Å)
1:C:18[B]:ILE:CD1	1:C:220[B]:LEU:HD12	1.36	1.56
1:A:113:ARG:HD2	4:A:2082:HOH:O	1.28	1.26
1:B:88:SER:O	4:B:2115:HOH:O	1.57	1.23
3:C:1250:TAM:N	4:C:2200:HOH:O	1.78	1.16
1:C:18[B]:ILE:HD13	1:C:220[B]:LEU:HD12	1.25	1.14
1:C:174:ARG:HG3	4:C:2143:HOH:O	1.52	1.09
1:C:18[B]:ILE:CD1	1:C:220[B]:LEU:CD1	2.30	1.09
1:C:18[B]:ILE:HD11	1:C:220[B]:LEU:HD12	1.07	1.07
1:C:18[B]:ILE:HD11	1:C:220[B]:LEU:CD1	1.91	0.99
1:C:18[B]:ILE:HD13	1:C:220[B]:LEU:CD1	1.95	0.94
1:C:219:GLU:HG2	3:C:1250:TAM:H61	1.55	0.86
4:A:2226:HOH:O	2:D:1252:EDO:H22	1.75	0.86
1:B:2:TYR:CD1	1:C:-1:PRO:HG3	2.12	0.84
1:B:2:TYR:CE1	1:C:-1:PRO:CD	2.67	0.78

Continued on next page...

Continued from previous page...

Atom-1	Atom-2	Interatomic distance (Å)	Clash overlap (Å)
1:B:18:ILE:HD11	1:B:183:ILE:HG21	1.66	0.77
1:A:211:LEU:CD2	4:D:2138:HOH:O	2.32	0.76
1:C:6:ASN:HA	4:C:2015:HOH:O	1.84	0.76
1:C:18[B]:ILE:HD13	1:C:220[B]:LEU:CG	2.15	0.76
1:C:18[B]:ILE:HD13	1:C:220[B]:LEU:HB3	1.68	0.75
1:A:18:ILE:HD11	1:A:183:ILE:HG21	1.69	0.74
1:A:88:SER:HB3	4:A:2122:HOH:O	1.89	0.73
3:C:1250:TAM:H41	3:C:1250:TAM:O6	1.89	0.72
1:A:1:MET:HE3	1:A:1:MET:HA	1.74	0.69
1:C:106:ARG:O	1:C:110[B]:VAL:HG12	1.92	0.69
1:C:18[B]:ILE:HG22	4:C:2031:HOH:O	1.93	0.68
1:C:87:ASN:CG	1:C:87:ASN:O	2.33	0.67
1:B:37:GLY:HA2	2:B:1251:EDO:H21	1.75	0.66
1:D:211:LEU:HD13	1:D:244:GLY:O	1.97	0.65
1:C:18[B]:ILE:HD13	1:C:220[B]:LEU:CB	2.26	0.65
4:B:2206:HOH:O	3:C:1250:TAM:H62	1.96	0.65
1:C:183:ILE:HD11	1:C:220[A]:LEU:HD21	1.79	0.65
1:B:3:ARG:HG3	2:B:1250:EDO:H12	1.79	0.63
1:D:170:GLY:HA3	2:D:1251:EDO:H11	1.79	0.63
1:A:113:ARG:NH2	1:C:105:ASP:OD1	2.30	0.63
1:B:2:TYR:CE1	1:C:-1:PRO:HD3	2.33	0.62
1:A:92:GLU:OE1	1:A:103:HIS:HD2	1.82	0.62
1:B:18:ILE:HD12	1:B:220:LEU:HB3	1.81	0.62
1:C:145:GLN:O	2:C:1252:EDO:C2	2.49	0.60
1:C:18[B]:ILE:CG1	1:C:220[B]:LEU:HD12	2.25	0.60
1:C:82:ASP:OD1	1:C:127:ARG:HD3	2.00	0.60
1:C:183:ILE:CD1	1:C:220[A]:LEU:HD21	2.32	0.59
1:C:39:ARG:NH1	1:C:42:GLU:OE1	2.30	0.59
1:D:87:ASN:CG	1:D:87:ASN:O	2.41	0.59
1:B:92:GLU:OE1	1:B:103:HIS:HD2	1.86	0.59
1:A:18:ILE:HD12	1:A:220:LEU:HB3	1.85	0.58
1:C:92:GLU:OE1	1:C:103:HIS:HD2	1.86	0.58
1:D:92:GLU:OE1	1:D:103:HIS:HD2	1.85	0.58
1:C:219:GLU:HG2	3:C:1250:TAM:C6	2.29	0.58
1:A:87:ASN:CG	1:A:87:ASN:O	2.42	0.57
3:C:1250:TAM:C6	3:C:1250:TAM:H41	2.36	0.56
1:C:219:GLU:CG	3:C:1250:TAM:H61	2.30	0.55
1:A:211:LEU:HD23	4:D:2138:HOH:O	2.02	0.55
4:B:2206:HOH:O	3:C:1250:TAM:H22	2.06	0.55
1:D:78:ARG:HH12	2:D:1250:EDO:C2	2.19	0.55
1:B:37:GLY:HA2	2:B:1251:EDO:C2	2.36	0.55

Continued on next page...

Continued from previous page...

Atom-1	Atom-2	Interatomic distance (Å)	Clash overlap (Å)
2:B:1250:EDO:H11	1:C:3:ARG:HD2	1.88	0.55
1:C:145:GLN:HB3	2:C:1252:EDO:H22	1.89	0.55
1:B:87:ASN:CG	1:B:87:ASN:O	2.45	0.54
1:C:183:ILE:HD12	1:C:220[A]:LEU:CD2	2.38	0.54
1:A:1:MET:HE1	4:D:2001:HOH:O	2.07	0.54
1:C:39:ARG:HH11	1:C:39:ARG:HB2	1.72	0.54
1:B:2:TYR:CE1	1:C:-1:PRO:CG	2.91	0.53
1:B:230:ASP:C	3:C:1250:TAM:H42	2.28	0.53
1:B:2:TYR:CD1	1:C:-1:PRO:CG	2.88	0.53
1:B:3:ARG:HD2	2:B:1250:EDO:C1	2.40	0.52
1:C:18[B]:ILE:CD1	1:C:220[B]:LEU:HB3	2.38	0.51
1:D:167:GLU:O	2:D:1251:EDO:C2	2.59	0.51
1:C:183:ILE:CD1	1:C:220[A]:LEU:CD2	2.89	0.51
1:B:231:ASP:HA	3:C:1250:TAM:C4	2.41	0.50
1:B:3:ARG:CG	2:B:1250:EDO:H12	2.41	0.50
1:C:5:LEU:HD12	4:C:2014:HOH:O	2.11	0.50
2:D:1251:EDO:C1	4:D:2169:HOH:O	2.58	0.50
1:A:69:ARG:HG2	4:A:2073:HOH:O	2.12	0.50
2:D:1251:EDO:H11	4:D:2169:HOH:O	2.12	0.49
2:A:1250:EDO:C1	4:A:2245:HOH:O	2.60	0.49
1:D:110[B]:VAL:O	1:D:110[B]:VAL:HG12	2.12	0.49
1:D:126:LEU:O	1:D:171:ARG:NH2	2.46	0.49
1:B:3:ARG:HD2	2:B:1250:EDO:H11	1.94	0.49
1:B:91:ILE:HG12	1:B:150:TYR:CE1	2.48	0.48
1:D:220:LEU:HD22	1:D:220:LEU:N	2.28	0.48
1:C:145:GLN:O	2:C:1252:EDO:H21	2.14	0.47
1:C:183:ILE:HD12	1:C:220[A]:LEU:HD23	1.96	0.47
1:A:42:GLU:HA	1:A:45:GLN:CG	2.45	0.46
1:C:126:LEU:O	1:C:171:ARG:NH2	2.49	0.46
1:B:18:ILE:HD12	1:B:220:LEU:CB	2.46	0.46
1:D:167:GLU:O	2:D:1251:EDO:H21	2.16	0.46
1:B:126:LEU:O	1:B:171:ARG:NH2	2.49	0.45
1:B:18:ILE:CG2	1:B:220:LEU:HD12	2.47	0.45
1:A:78:ARG:O	4:A:2110:HOH:O	2.20	0.45
1:D:211:LEU:HD13	1:D:244:GLY:C	2.36	0.45
1:C:220[A]:LEU:N	1:C:220[A]:LEU:HD22	2.30	0.45
1:B:231:ASP:N	3:C:1250:TAM:H42	2.32	0.45
4:B:2046:HOH:O	1:C:-1:PRO:HA	2.16	0.44
1:C:87:ASN:ND2	1:C:87:ASN:O	2.49	0.44
1:A:126:LEU:O	1:A:171:ARG:NH2	2.51	0.44
1:A:125:LEU:HG	4:A:2153:HOH:O	2.17	0.44

Continued on next page...

Continued from previous page...

Atom-1	Atom-2	Interatomic distance (Å)	Clash overlap (Å)
1:B:1:MET:HG2	1:C:-1:PRO:HG2	2.00	0.44
1:B:113:ARG:NH2	1:D:105:ASP:OD1	2.46	0.43
1:D:220:LEU:CD2	1:D:220:LEU:N	2.80	0.43
1:B:115:LEU:HD11	1:B:134:LEU:HD22	2.01	0.43
1:D:20:LEU:HD13	1:D:46:ALA:HB1	2.01	0.42
1:C:220[B]:LEU:HD13	1:C:220[B]:LEU:O	2.19	0.42
1:B:105:ASP:OD1	1:D:113:ARG:NH2	2.47	0.42
1:B:2:TYR:CE1	1:C:-1:PRO:HD2	2.51	0.42
1:C:63:LYS:HE2	1:C:65:GLU:OE2	2.20	0.42
2:B:1251:EDO:H11	4:B:2032:HOH:O	2.20	0.41
1:C:115:LEU:HD11	1:C:134:LEU:HD22	2.01	0.41
1:B:148:ASP:OD1	1:D:167:GLU:OE2	2.39	0.41
1:A:167:GLU:OE2	1:C:148:ASP:OD1	2.39	0.41
1:C:103:HIS:HE1	4:C:2115:HOH:O	2.02	0.41
1:C:220[A]:LEU:CD2	1:C:220[A]:LEU:N	2.83	0.41
1:D:110[B]:VAL:O	1:D:110[B]:VAL:CG1	2.69	0.41
1:B:3:ARG:CD	2:B:1250:EDO:H12	2.51	0.41
1:C:145:GLN:O	2:C:1252:EDO:H22	2.19	0.41
1:D:211:LEU:HD12	1:D:211:LEU:N	2.36	0.41
1:D:41:LYS:CE	1:D:45:GLN:HE22	2.34	0.41
1:D:69:ARG:HD2	4:D:2067:HOH:O	2.19	0.41
1:B:3:ARG:HD2	2:B:1250:EDO:H12	2.03	0.40
1:A:18:ILE:HD12	1:A:220:LEU:CB	2.49	0.40
1:C:102:GLU:OE1	1:C:106:ARG:NH2	2.34	0.40
1:B:231:ASP:HA	3:C:1250:TAM:H42	2.02	0.40
4:B:2209:HOH:O	3:C:1250:TAM:H21	2.21	0.40
1:C:52:ARG:HD3	4:C:2058:HOH:O	2.20	0.40

All (1) symmetry-related close contacts are listed below. The label for Atom-2 includes the symmetry operator and encoded unit-cell translations to be applied.

Atom-1	Atom-2	Interatomic distance (Å)	Clash overlap (Å)
4:C:2041:HOH:O	4:C:2135:HOH:O[4_545]	2.09	0.11

5.3 Torsion angles [i](#)

5.3.1 Protein backbone [i](#)

In the following table, the Percentiles column shows the percent Ramachandran outliers of the chain as a percentile score with respect to all X-ray entries followed by that with respect to entries

of similar resolution.

The Analysed column shows the number of residues for which the backbone conformation was analysed, and the total number of residues.

Mol	Chain	Analysed	Favoured	Allowed	Outliers	Percentiles	
1	A	229/253 (90%)	225 (98%)	4 (2%)	0	100	100
1	B	228/253 (90%)	223 (98%)	5 (2%)	0	100	100
1	C	239/253 (94%)	233 (98%)	6 (2%)	0	100	100
1	D	227/253 (90%)	221 (97%)	6 (3%)	0	100	100
All	All	923/1012 (91%)	902 (98%)	21 (2%)	0	100	100

There are no Ramachandran outliers to report.

5.3.2 Protein sidechains [i](#)

In the following table, the Percentiles column shows the percent sidechain outliers of the chain as a percentile score with respect to all X-ray entries followed by that with respect to entries of similar resolution.

The Analysed column shows the number of residues for which the sidechain conformation was analysed, and the total number of residues.

Mol	Chain	Analysed	Rotameric	Outliers	Percentiles	
1	A	174/197 (88%)	169 (97%)	5 (3%)	42	13
1	B	168/197 (85%)	165 (98%)	3 (2%)	59	30
1	C	183/197 (93%)	181 (99%)	2 (1%)	73	53
1	D	168/197 (85%)	165 (98%)	3 (2%)	59	30
All	All	693/788 (88%)	680 (98%)	13 (2%)	57	27

All (13) residues with a non-rotameric sidechain are listed below:

Mol	Chain	Res	Type
1	A	88	SER
1	A	148	ASP
1	A	158	ARG
1	A	187	ILE
1	A	220	LEU
1	B	148	ASP
1	B	158	ARG
1	B	220	LEU

Continued on next page...

Continued from previous page...

Mol	Chain	Res	Type
1	C	148	ASP
1	C	158	ARG
1	D	64	LEU
1	D	148	ASP
1	D	158	ARG

Some sidechains can be flipped to improve hydrogen bonding and reduce clashes. All (15) such sidechains are listed below:

Mol	Chain	Res	Type
1	A	15	ASN
1	A	53	ASN
1	A	103	HIS
1	A	120	GLN
1	B	6	ASN
1	B	53	ASN
1	B	77	GLN
1	B	103	HIS
1	B	120	GLN
1	C	6	ASN
1	C	103	HIS
1	D	15	ASN
1	D	45	GLN
1	D	53	ASN
1	D	103	HIS

5.3.3 RNA [i](#)

There are no RNA molecules in this entry.

5.4 Non-standard residues in protein, DNA, RNA chains [i](#)

There are no non-standard protein/DNA/RNA residues in this entry.

5.5 Carbohydrates [i](#)

There are no carbohydrates in this entry.

5.6 Ligand geometry [i](#)

9 ligands are modelled in this entry.

In the following table, the Counts columns list the number of bonds (or angles) for which Mogul statistics could be retrieved, the number of bonds (or angles) that are observed in the model and the number of bonds (or angles) that are defined in the Chemical Component Dictionary. The Link column lists molecule types, if any, to which the group is linked. The Z score for a bond length (or angle) is the number of standard deviations the observed value is removed from the expected value. A bond length (or angle) with $|Z| > 2$ is considered an outlier worth inspection. RMSZ is the root-mean-square of all Z scores of the bond lengths (or angles).

Mol	Type	Chain	Res	Link	Bond lengths			Bond angles		
					Counts	RMSZ	# Z > 2	Counts	RMSZ	# Z > 2
2	EDO	C	1251	-	3,3,3	0.39	0	2,2,2	0.52	0
2	EDO	B	1251	-	3,3,3	0.34	0	2,2,2	0.36	0
2	EDO	D	1251	-	3,3,3	0.21	0	2,2,2	0.34	0
2	EDO	B	1250	-	3,3,3	0.77	0	2,2,2	1.87	1 (50%)
2	EDO	C	1252	-	3,3,3	0.49	0	2,2,2	0.90	0
3	TAM	C	1250	-	7,10,10	1.87	2 (28%)	9,12,12	5.02	6 (66%)
2	EDO	D	1250	-	3,3,3	0.39	0	2,2,2	1.17	0
2	EDO	A	1250	-	3,3,3	0.70	0	2,2,2	0.38	0
2	EDO	D	1252	-	3,3,3	0.80	0	2,2,2	0.78	0

In the following table, the Chirals column lists the number of chiral outliers, the number of chiral centers analysed, the number of these observed in the model and the number defined in the Chemical Component Dictionary. Similar counts are reported in the Torsion and Rings columns. '2' means no outliers of that kind were identified.

Mol	Type	Chain	Res	Link	Chirals	Torsions	Rings
2	EDO	C	1251	-	-	0/1/1/1	-
2	EDO	B	1251	-	-	0/1/1/1	-
2	EDO	D	1251	-	-	1/1/1/1	-
2	EDO	B	1250	-	-	1/1/1/1	-
2	EDO	C	1252	-	-	0/1/1/1	-
3	TAM	C	1250	-	-	5/12/12/12	-
2	EDO	D	1250	-	-	0/1/1/1	-
2	EDO	A	1250	-	-	1/1/1/1	-
2	EDO	D	1252	-	-	0/1/1/1	-

All (2) bond length outliers are listed below:

Mol	Chain	Res	Type	Atoms	Z	Observed(Å)	Ideal(Å)
3	C	1250	TAM	C1-C4	-3.37	1.45	1.52
3	C	1250	TAM	O6-C6	2.42	1.54	1.42

All (7) bond angle outliers are listed below:

Mol	Chain	Res	Type	Atoms	Z	Observed(°)	Ideal(°)
3	C	1250	TAM	C2-C-C1	-10.32	92.31	110.50
3	C	1250	TAM	O6-C6-C3	8.68	134.57	111.39
3	C	1250	TAM	C3-C-N	3.90	119.20	108.09
3	C	1250	TAM	C3-C-C2	3.40	116.49	110.50
2	B	1250	EDO	O1-C1-C2	2.58	130.47	111.91
3	C	1250	TAM	O4-C4-C1	-2.51	104.69	111.39
3	C	1250	TAM	C3-C-C1	2.51	114.93	110.50

There are no chirality outliers.

All (8) torsion outliers are listed below:

Mol	Chain	Res	Type	Atoms
3	C	1250	TAM	N-C-C1-C4
3	C	1250	TAM	N-C-C2-C5
3	C	1250	TAM	C1-C-C3-C6
3	C	1250	TAM	C2-C-C3-C6
3	C	1250	TAM	N-C-C3-C6
2	D	1251	EDO	O1-C1-C2-O2
2	B	1250	EDO	O1-C1-C2-O2
2	A	1250	EDO	O1-C1-C2-O2

There are no ring outliers.

8 monomers are involved in 39 short contacts:

Mol	Chain	Res	Type	Clashes	Symm-Clashes
2	B	1251	EDO	3	0
2	D	1251	EDO	9	0
2	B	1250	EDO	7	0
2	C	1252	EDO	4	0
3	C	1250	TAM	13	0
2	D	1250	EDO	1	0
2	A	1250	EDO	1	0
2	D	1252	EDO	1	0

5.7 Other polymers

There are no such residues in this entry.

5.8 Polymer linkage issues

There are no chain breaks in this entry.

6 Fit of model and data

6.1 Protein, DNA and RNA chains

In the following table, the column labelled ‘#RSRZ> 2’ contains the number (and percentage) of RSRZ outliers, followed by percent RSRZ outliers for the chain as percentile scores relative to all X-ray entries and entries of similar resolution. The OWAB column contains the minimum, median, 95th percentile and maximum values of the occupancy-weighted average B-factor per residue. The column labelled ‘Q< 0.9’ lists the number of (and percentage) of residues with an average occupancy less than 0.9.

Mol	Chain	Analysed	<RSRZ>	#RSRZ>2	OWAB(Å ²)	Q<0.9
1	A	232/253 (91%)	-0.10	8 (3%) 45 49	12, 19, 38, 56	0
1	B	231/253 (91%)	-0.03	3 (1%) 77 81	12, 21, 35, 43	0
1	C	237/253 (93%)	-0.16	3 (1%) 77 81	11, 17, 37, 53	0
1	D	229/253 (90%)	-0.15	5 (2%) 62 67	12, 20, 43, 61	0
All	All	929/1012 (91%)	-0.11	19 (2%) 65 70	11, 19, 39, 61	0

All (19) RSRZ outliers are listed below:

Mol	Chain	Res	Type	RSRZ
1	C	-1	PRO	4.7
1	A	0	ALA	3.9
1	C	-2	GLY	3.7
1	B	208	ALA	3.6
1	A	187	ILE	3.5
1	A	-2	GLY	3.3
1	A	16	SER	3.0
1	D	205	PHE	2.8
1	B	183	ILE	2.6
1	A	1	MET	2.6
1	D	16	SER	2.4
1	B	207	ALA	2.4
1	A	-1	PRO	2.4
1	C	201	LEU	2.2
1	D	15	ASN	2.1
1	A	2	TYR	2.1
1	D	50	ILE	2.0
1	D	40	ARG	2.0
1	A	15	ASN	2.0

6.2 Non-standard residues in protein, DNA, RNA chains [i](#)

There are no non-standard protein/DNA/RNA residues in this entry.

6.3 Carbohydrates [i](#)

There are no carbohydrates in this entry.

6.4 Ligands [i](#)

In the following table, the Atoms column lists the number of modelled atoms in the group and the number defined in the chemical component dictionary. The B-factors column lists the minimum, median, 95th percentile and maximum values of B factors of atoms in the group. The column labelled 'Q< 0.9' lists the number of atoms with occupancy less than 0.9.

Mol	Type	Chain	Res	Atoms	RSCC	RSR	B-factors(\AA^2)	Q<0.9
2	EDO	D	1250	4/4	0.74	0.25	50,50,53,56	0
2	EDO	D	1252	4/4	0.80	0.25	41,43,45,49	0
2	EDO	A	1250	4/4	0.82	0.21	39,39,43,43	0
3	TAM	C	1250	11/11	0.86	0.19	20,34,38,45	0
2	EDO	B	1250	4/4	0.88	0.32	25,25,27,35	4
2	EDO	C	1252	4/4	0.88	0.25	34,39,44,49	0
2	EDO	B	1251	4/4	0.91	0.20	22,24,32,38	4
2	EDO	D	1251	4/4	0.91	0.21	32,41,42,56	0
2	EDO	C	1251	4/4	0.92	0.12	41,41,44,44	0

6.5 Other polymers [i](#)

There are no such residues in this entry.