



Full wwPDB EM Validation Report ⓘ

Nov 19, 2022 – 03:15 PM EST

PDB ID : 3BO0
EMDB ID : EMD-1484
Title : Ribosome-SecY complex
Authors : Akey, C.W.; Menetret, J.F.
Deposited on : 2007-12-15
Resolution : 9.60 Å(reported)
Based on initial models : 2I2T, 1RHZ

This is a Full wwPDB EM Validation Report for a publicly released PDB entry.

We welcome your comments at validation@mail.wwpdb.org

A user guide is available at

<https://www.wwpdb.org/validation/2017/EMValidationReportHelp>

with specific help available everywhere you see the ⓘ symbol.

The types of validation reports are described at

<http://www.wwpdb.org/validation/2017/FAQs#types>.

The following versions of software and data (see [references ⓘ](#)) were used in the production of this report:

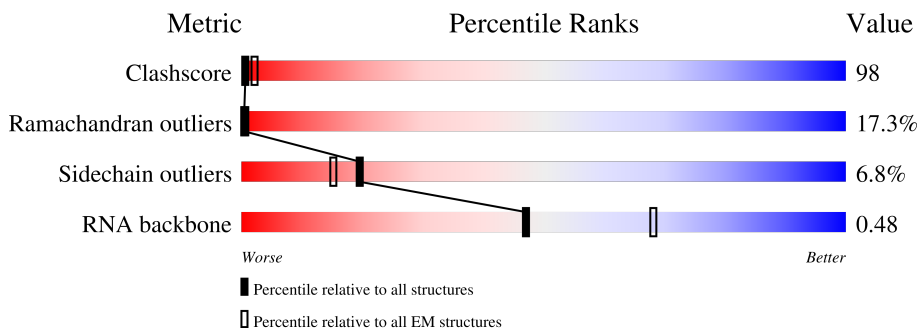
EMDB validation analysis : 0.0.1.dev43
MolProbity : 4.02b-467
Percentile statistics : 20191225.v01 (using entries in the PDB archive December 25th 2019)
MapQ : 1.9.9
Ideal geometry (proteins) : Engh & Huber (2001)
Ideal geometry (DNA, RNA) : Parkinson et al. (1996)
Validation Pipeline (wwPDB-VP) : 2.31.3

1 Overall quality at a glance i

The following experimental techniques were used to determine the structure:
ELECTRON MICROSCOPY

The reported resolution of this entry is 9.60 Å.

Percentile scores (ranging between 0-100) for global validation metrics of the entry are shown in the following graphic. The table shows the number of entries on which the scores are based.



Metric	Whole archive (#Entries)	EM structures (#Entries)
Clashscore	158937	4297
Ramachandran outliers	154571	4023
Sidechain outliers	154315	3826
RNA backbone	4643	859

The table below summarises the geometric issues observed across the polymeric chains and their fit to the map. The red, orange, yellow and green segments of the bar indicate the fraction of residues that contain outliers for ≥ 3 , 2, 1 and 0 types of geometric quality criteria respectively. A grey segment represents the fraction of residues that are not modelled. The numeric value for each fraction is indicated below the corresponding segment, with a dot representing fractions $\leq 5\%$. The upper red bar (where present) indicates the fraction of residues that have poor fit to the EM map (all-atom inclusion $< 40\%$). The numeric value is given above the bar.

Mol	Chain	Length	Quality of chain
1	D	27	33% 44% 22%
2	E	27	48% 37% 15%
3	F	19	42% 47% 5% 5%
4	G	32	34% 53% 12%
5	A	442	5% 23% 56% 19% .
6	B	65	11% 23% 60% 17%
7	C	32	41% 56% .

2 Entry composition [i](#)

There are 7 unique types of molecules in this entry. The entry contains 6432 atoms, of which 0 are hydrogens and 0 are deuteriums.

In the tables below, the AltConf column contains the number of residues with at least one atom in alternate conformation and the Trace column contains the number of residues modelled with at most 2 atoms.

- Molecule 1 is a RNA chain called 23S RIBOSOMAL RNA.

Mol	Chain	Residues	Atoms					AltConf	Trace
			Total	C	N	O	P		
1	D	27	579	259	106	187	27	0	0

- Molecule 2 is a RNA chain called 23S RIBOSOMAL RNA.

Mol	Chain	Residues	Atoms					AltConf	Trace
			Total	C	N	O	P		
2	E	27	592	264	122	179	27	0	0

- Molecule 3 is a RNA chain called 23S RIBOSOMAL RNA.

Mol	Chain	Residues	Atoms					AltConf	Trace
			Total	C	N	O	P		
3	F	19	401	180	68	134	19	0	0

- Molecule 4 is a RNA chain called 23S RIBOSOMAL RNA.

Mol	Chain	Residues	Atoms					AltConf	Trace
			Total	C	N	O	P		
4	G	32	691	308	131	220	32	0	0

- Molecule 5 is a protein called PREPROTEIN TRANSLOCASE SecY SUBUNIT.

Mol	Chain	Residues	Atoms					AltConf	Trace
			Total	C	N	O	S		
5	A	442	3407	2266	547	576	18	0	0

- Molecule 6 is a protein called PREPROTEIN TRANSLOCASE SecE SUBUNIT.

Mol	Chain	Residues	Atoms				AltConf	Trace
			Total	C	N	O		
6	B	65	505	332	88	85	0	0

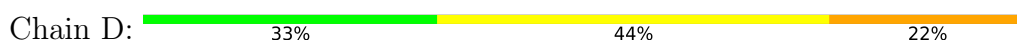
- Molecule 7 is a protein called Preprotein translocase secG subunit.

Mol	Chain	Residues	Atoms				AltConf	Trace
			Total	C	N	O		
7	C	32	257	172	42	43	0	0

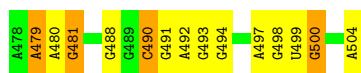
3 Residue-property plots

These plots are drawn for all protein, RNA, DNA and oligosaccharide chains in the entry. The first graphic for a chain summarises the proportions of the various outlier classes displayed in the second graphic. The second graphic shows the sequence view annotated by issues in geometry and atom inclusion in map density. Residues are color-coded according to the number of geometric quality criteria for which they contain at least one outlier: green = 0, yellow = 1, orange = 2 and red = 3 or more. A red diamond above a residue indicates a poor fit to the EM map for this residue (all-atom inclusion < 40%). Stretches of 2 or more consecutive residues without any outlier are shown as a green connector. Residues present in the sample, but not in the model, are shown in grey.

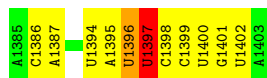
- Molecule 1: 23S RIBOSOMAL RNA



- Molecule 2: 23S RIBOSOMAL RNA



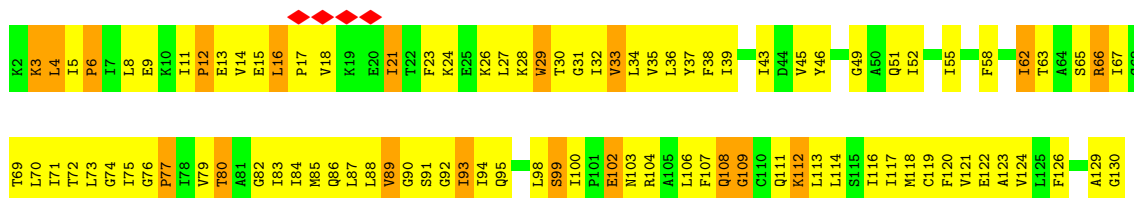
- Molecule 3: 23S RIBOSOMAL RNA

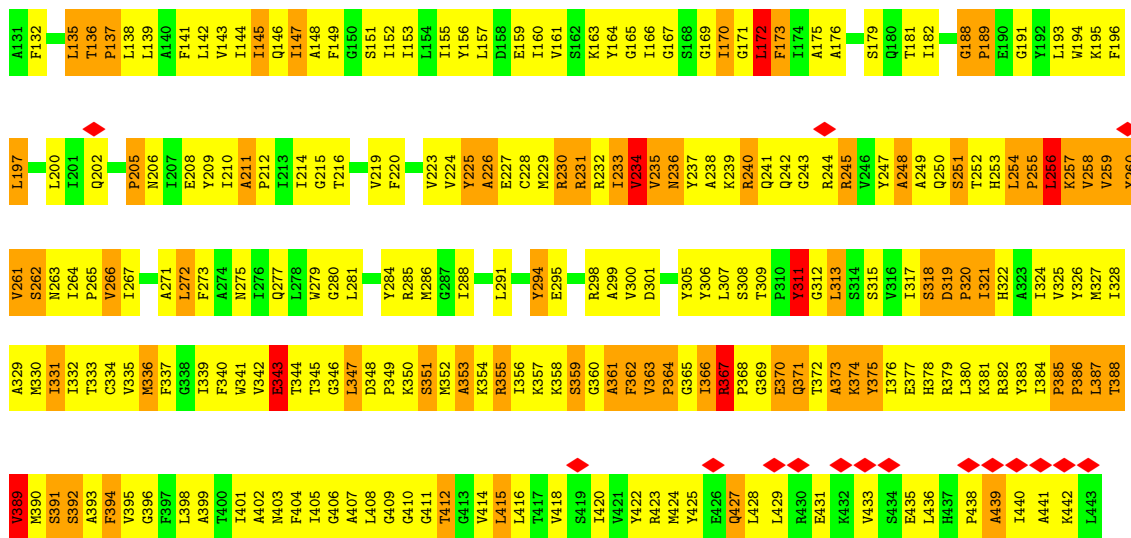


- Molecule 4: 23S RIBOSOMAL RNA

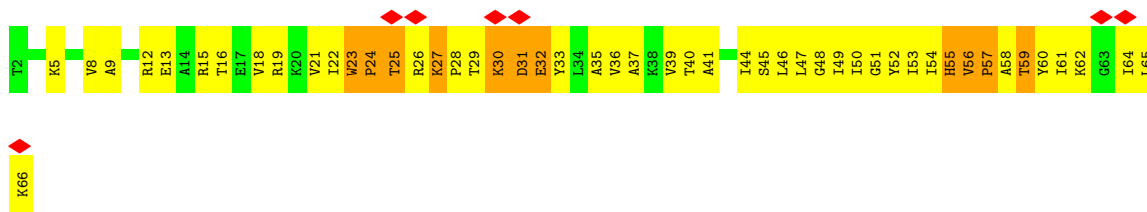
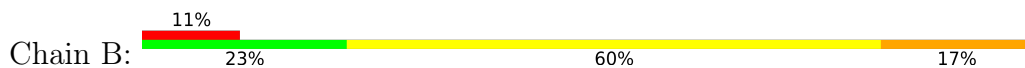


- Molecule 5: PREPROTEIN TRANSLOCASE SecY SUBUNIT





• Molecule 6: PREPROTEIN TRANSLOCASE SecE SUBUNIT



• Molecule 7: Preprotein translocase secG subunit



4 Experimental information

Property	Value	Source
EM reconstruction method	SINGLE PARTICLE	Depositor
Imposed symmetry	POINT, C1	Depositor
Number of particles used	39000	Depositor
Resolution determination method	Not provided	
CTF correction method	EMAN- phase flipping of particles form the same micrograph	Depositor
Microscope	FEI TECNAI F20	Depositor
Voltage (kV)	200	Depositor
Electron dose ($e^-/\text{\AA}^2$)	15	Depositor
Minimum defocus (nm)	-700	Depositor
Maximum defocus (nm)	-3000	Depositor
Magnification	51000	Depositor
Image detector	KODAK SO-163 FILM	Depositor
Maximum map value	10.649	Depositor
Minimum map value	-4.997	Depositor
Average map value	0.150	Depositor
Map value standard deviation	0.868	Depositor
Recommended contour level	0.95	Depositor
Map size (\AA)	393.12, 393.12, 393.12	wwPDB
Map dimensions	144, 144, 144	wwPDB
Map angles ($^\circ$)	90, 90, 90	wwPDB
Pixel spacing (\AA)	2.73, 2.73, 2.73	Depositor

5 Model quality [i](#)

5.1 Standard geometry [i](#)

The Z score for a bond length (or angle) is the number of standard deviations the observed value is removed from the expected value. A bond length (or angle) with $|Z| > 5$ is considered an outlier worth inspection. RMSZ is the root-mean-square of all Z scores of the bond lengths (or angles).

Mol	Chain	Bond lengths		Bond angles	
		RMSZ	# Z >5	RMSZ	# Z >5
1	D	0.27	0/648	0.69	0/1008
2	E	0.21	0/666	0.70	0/1039
3	F	0.20	0/447	0.76	1/693 (0.1%)
4	G	0.24	0/774	0.71	0/1206
5	A	0.38	0/3483	0.60	0/4732
6	B	0.27	0/514	0.47	0/694
7	C	0.38	0/262	0.55	0/354
All	All	0.33	0/6794	0.64	1/9726 (0.0%)

Chiral center outliers are detected by calculating the chiral volume of a chiral center and verifying if the center is modelled as a planar moiety or with the opposite hand. A planarity outlier is detected by checking planarity of atoms in a peptide group, atoms in a mainchain group or atoms of a sidechain that are expected to be planar.

Mol	Chain	#Chirality outliers	#Planarity outliers
2	E	0	1
4	G	0	1
5	A	3	0
All	All	3	2

There are no bond length outliers.

All (1) bond angle outliers are listed below:

Mol	Chain	Res	Type	Atoms	Z	Observed(°)	Ideal(°)
3	F	1397	U	C5'-C4'-C3'	-5.62	107.01	116.00

All (3) chirality outliers are listed below:

Mol	Chain	Res	Type	Atom
5	A	241	GLN	CA
5	A	250	GLN	CA
5	A	373	ALA	CA

All (2) planarity outliers are listed below:

Mol	Chain	Res	Type	Group
2	E	500	G	Sidechain
4	G	1546	G	Sidechain

5.2 Too-close contacts

In the following table, the Non-H and H(model) columns list the number of non-hydrogen atoms and hydrogen atoms in the chain respectively. The H(added) column lists the number of hydrogen atoms added and optimized by MolProbity. The Clashes column lists the number of clashes within the asymmetric unit, whereas Symm-Clashes lists symmetry-related clashes.

Mol	Chain	Non-H	H(model)	H(added)	Clashes	Symm-Clashes
1	D	579	0	291	22	0
2	E	592	0	297	15	0
3	F	401	0	203	16	0
4	G	691	0	348	24	0
5	A	3407	0	3619	921	0
6	B	505	0	557	279	0
7	C	257	0	272	31	0
All	All	6432	0	5587	1176	0

The all-atom clashscore is defined as the number of clashes found per 1000 atoms (including hydrogen atoms). The all-atom clashscore for this structure is 98.

All (1176) close contacts within the same asymmetric unit are listed below, sorted by their clash magnitude.

Atom-1	Atom-2	Interatomic distance (Å)	Clash overlap (Å)
5:A:230:ARG:HB3	5:A:255:PRO:CG	1.31	1.58
6:B:26:ARG:CB	6:B:29:THR:HA	1.39	1.52
5:A:243:GLY:HA3	5:A:247:TYR:CG	1.45	1.50
5:A:366:ILE:HG13	5:A:368:PRO:CD	1.37	1.50
5:A:234:VAL:HB	5:A:235:VAL:CB	1.42	1.50
6:B:26:ARG:CZ	6:B:30:LYS:HB2	1.39	1.50
5:A:389:VAL:HB	5:A:390:MET:CB	1.44	1.48
5:A:389:VAL:CG1	5:A:390:MET:HA	1.44	1.46
5:A:234:VAL:CG1	5:A:235:VAL:HA	1.47	1.43
5:A:233:ILE:O	5:A:234:VAL:CG2	1.68	1.40
6:B:26:ARG:C	6:B:27:LYS:HD3	1.38	1.40
5:A:239:LYS:HB2	5:A:368:PRO:CB	1.51	1.40
5:A:389:VAL:CG1	5:A:391:SER:HB3	1.50	1.40

Continued on next page...

Continued from previous page...

Atom-1	Atom-2	Interatomic distance (Å)	Clash overlap (Å)
5:A:242:GLN:N	5:A:247:TYR:HB3	1.41	1.35
5:A:389:VAL:HG12	5:A:391:SER:CB	1.55	1.35
5:A:242:GLN:HB3	5:A:247:TYR:CD2	1.61	1.35
5:A:256:LEU:HD12	5:A:257:LYS:N	1.38	1.34
5:A:254:LEU:HB3	5:A:255:PRO:CA	1.50	1.34
6:B:26:ARG:HB3	6:B:29:THR:CA	1.57	1.34
5:A:366:ILE:CG1	5:A:368:PRO:HD3	1.56	1.33
5:A:331:ILE:CD1	5:A:393:ALA:HA	1.59	1.32
5:A:232:ARG:C	5:A:233:ILE:HD12	1.52	1.28
5:A:254:LEU:CB	5:A:255:PRO:HA	1.63	1.27
5:A:363:VAL:HG22	5:A:364:PRO:CD	1.64	1.27
5:A:231:ARG:HB2	6:B:22:ILE:CD1	1.61	1.27
5:A:331:ILE:O	5:A:392:SER:HB2	1.33	1.27
5:A:236:ASN:HD21	5:A:251:SER:CB	1.47	1.27
5:A:241:GLN:HB3	5:A:242:GLN:CA	1.65	1.26
5:A:38:PHE:CE1	6:B:50:ILE:HG23	1.70	1.25
5:A:261:VAL:CG2	5:A:388:THR:HG22	1.65	1.25
5:A:365:GLY:O	5:A:366:ILE:HG12	1.30	1.25
5:A:242:GLN:H	5:A:247:TYR:CB	1.49	1.25
5:A:360:GLY:CA	5:A:370:GLU:OE2	1.82	1.25
5:A:390:MET:HG2	6:B:15:ARG:NH1	1.49	1.24
5:A:349:PRO:HG3	5:A:384:ILE:CD1	1.66	1.24
6:B:55:HIS:O	6:B:57:PRO:HG2	1.36	1.24
5:A:176:ALA:N	6:B:47:LEU:HD21	1.51	1.23
5:A:253:HIS:O	5:A:254:LEU:HG	1.36	1.23
5:A:237:TYR:CE2	5:A:239:LYS:HD2	1.73	1.23
5:A:389:VAL:CB	5:A:390:MET:HB3	1.67	1.23
6:B:26:ARG:HG2	6:B:30:LYS:N	1.51	1.23
5:A:242:GLN:HB3	5:A:243:GLY:CA	1.68	1.22
5:A:38:PHE:CB	6:B:54:ILE:HD13	1.69	1.22
5:A:335:VAL:CG2	5:A:392:SER:OG	1.88	1.22
6:B:56:VAL:HG13	6:B:57:PRO:CD	1.70	1.21
5:A:241:GLN:CB	5:A:242:GLN:HA	1.57	1.20
5:A:360:GLY:HA3	5:A:370:GLU:CD	1.60	1.20
5:A:231:ARG:HB2	6:B:22:ILE:HD11	1.24	1.19
5:A:234:VAL:CB	5:A:235:VAL:HB	1.72	1.19
5:A:360:GLY:HA3	5:A:370:GLU:OE2	1.04	1.18
5:A:388:THR:O	5:A:389:VAL:O	1.61	1.18
6:B:26:ARG:HD2	6:B:27:LYS:NZ	1.59	1.18
4:G:1537:G:C8	5:A:375:TYR:HE2	1.62	1.18
5:A:239:LYS:CG	5:A:368:PRO:HA	1.73	1.18

Continued on next page...

Continued from previous page...

Atom-1	Atom-2	Interatomic distance (Å)	Clash overlap (Å)
5:A:331:ILE:HD12	5:A:393:ALA:CA	1.71	1.18
5:A:239:LYS:CB	5:A:368:PRO:HB3	1.73	1.17
5:A:62:ILE:HD12	5:A:62:ILE:H	1.10	1.16
5:A:261:VAL:HG11	5:A:388:THR:CG2	1.76	1.16
6:B:55:HIS:O	6:B:57:PRO:CG	1.91	1.16
4:G:1537:G:H8	5:A:375:TYR:CE2	1.63	1.16
5:A:176:ALA:CA	6:B:47:LEU:HD21	1.75	1.16
5:A:335:VAL:N	5:A:392:SER:HB3	1.58	1.16
6:B:55:HIS:C	6:B:57:PRO:HD2	1.63	1.16
6:B:26:ARG:CG	6:B:29:THR:HA	1.75	1.16
5:A:239:LYS:C	5:A:249:ALA:HB2	1.66	1.16
6:B:26:ARG:O	6:B:27:LYS:HD3	1.43	1.15
5:A:344:THR:HG23	5:A:345:THR:H	1.07	1.15
5:A:389:VAL:HG12	5:A:390:MET:CA	1.76	1.15
5:A:243:GLY:CA	5:A:247:TYR:CG	2.30	1.15
5:A:362:PHE:O	5:A:363:VAL:HG12	1.44	1.14
5:A:230:ARG:HB3	5:A:255:PRO:HG3	1.19	1.14
5:A:233:ILE:O	5:A:234:VAL:HG22	0.96	1.14
5:A:385:PRO:HB2	5:A:386:PRO:CD	1.77	1.14
5:A:242:GLN:CB	5:A:247:TYR:CD2	2.32	1.13
5:A:230:ARG:CB	5:A:255:PRO:CG	2.27	1.13
5:A:232:ARG:O	5:A:233:ILE:HD12	1.45	1.13
5:A:236:ASN:HD21	5:A:251:SER:HB3	0.98	1.13
5:A:260:TYR:HE1	5:A:423:ARG:HD3	1.11	1.12
5:A:227:GLU:HG2	5:A:257:LYS:CE	1.79	1.12
5:A:233:ILE:CG2	5:A:234:VAL:H	1.61	1.12
6:B:55:HIS:O	6:B:57:PRO:CD	1.98	1.12
5:A:233:ILE:HG22	5:A:234:VAL:N	1.61	1.12
5:A:254:LEU:HD22	5:A:255:PRO:O	1.50	1.12
5:A:349:PRO:HG3	5:A:384:ILE:HD12	1.24	1.11
5:A:365:GLY:O	5:A:366:ILE:CG1	1.97	1.11
6:B:15:ARG:O	6:B:18:VAL:HG12	1.50	1.11
5:A:242:GLN:HB3	5:A:243:GLY:HA3	1.14	1.11
5:A:390:MET:HA	5:A:391:SER:HB3	1.14	1.10
5:A:389:VAL:CB	5:A:390:MET:CA	2.30	1.10
5:A:239:LYS:CA	5:A:249:ALA:CB	2.30	1.10
6:B:26:ARG:HD2	6:B:27:LYS:HZ3	0.94	1.09
5:A:257:LYS:HG2	5:A:258:VAL:H	0.98	1.09
6:B:53:ILE:O	6:B:57:PRO:HG3	1.51	1.09
5:A:234:VAL:HG12	5:A:235:VAL:CA	1.81	1.08
5:A:243:GLY:HA3	5:A:247:TYR:CD2	1.88	1.08

Continued on next page...

Continued from previous page...

Atom-1	Atom-2	Interatomic distance (Å)	Clash overlap (Å)
5:A:227:GLU:HG2	5:A:257:LYS:HE2	1.34	1.08
5:A:230:ARG:CB	5:A:255:PRO:HG2	1.81	1.08
5:A:234:VAL:CB	5:A:235:VAL:CA	2.30	1.08
5:A:239:LYS:HA	5:A:239:LYS:HE2	1.14	1.08
5:A:38:PHE:HB3	6:B:54:ILE:HD13	1.29	1.08
5:A:261:VAL:HG11	5:A:388:THR:HG21	1.16	1.08
5:A:334:CYS:HB2	5:A:392:SER:HA	1.33	1.08
5:A:334:CYS:CB	5:A:392:SER:HA	1.82	1.08
6:B:56:VAL:CG1	6:B:57:PRO:CD	2.30	1.08
5:A:363:VAL:HG22	5:A:364:PRO:HD2	1.09	1.07
6:B:26:ARG:CZ	6:B:30:LYS:CB	2.30	1.07
5:A:84:ILE:HD12	5:A:114:LEU:HD21	1.31	1.07
5:A:331:ILE:HA	5:A:392:SER:O	1.55	1.07
5:A:234:VAL:HB	5:A:235:VAL:CA	1.82	1.07
5:A:381:LYS:O	5:A:385:PRO:HD3	1.53	1.07
5:A:239:LYS:HA	5:A:249:ALA:CB	1.84	1.07
5:A:260:TYR:HE1	5:A:423:ARG:CD	1.68	1.06
5:A:237:TYR:HE2	5:A:239:LYS:HD2	0.91	1.06
6:B:26:ARG:HH22	6:B:30:LYS:CD	1.68	1.06
6:B:26:ARG:NH2	6:B:30:LYS:HB2	1.69	1.06
5:A:389:VAL:CG1	5:A:390:MET:CA	2.30	1.06
6:B:26:ARG:HG2	6:B:30:LYS:H	0.96	1.06
6:B:56:VAL:HG13	6:B:57:PRO:HD3	1.31	1.06
5:A:233:ILE:HG22	5:A:234:VAL:H	0.92	1.06
5:A:234:VAL:CG1	5:A:235:VAL:CA	2.33	1.06
5:A:335:VAL:HG23	5:A:392:SER:OG	1.50	1.06
5:A:231:ARG:CB	6:B:22:ILE:CD1	2.33	1.05
6:B:26:ARG:NH2	6:B:30:LYS:HD2	1.69	1.05
5:A:231:ARG:O	5:A:233:ILE:HD13	1.57	1.05
5:A:242:GLN:CB	5:A:243:GLY:CA	2.30	1.05
5:A:236:ASN:ND2	5:A:251:SER:CB	2.18	1.04
5:A:386:PRO:HB3	6:B:15:ARG:HH11	1.20	1.04
5:A:390:MET:CG	6:B:15:ARG:NH1	2.19	1.04
5:A:175:ALA:C	6:B:47:LEU:HD21	1.76	1.04
5:A:38:PHE:HE1	6:B:50:ILE:CG2	1.69	1.04
5:A:261:VAL:HG21	5:A:388:THR:CG2	1.87	1.04
5:A:234:VAL:CB	5:A:235:VAL:CB	2.30	1.03
5:A:238:ALA:O	5:A:239:LYS:HE3	1.58	1.03
5:A:389:VAL:HB	5:A:390:MET:CA	1.86	1.03
5:A:243:GLY:C	5:A:247:TYR:CD1	2.32	1.03
5:A:231:ARG:HG2	5:A:233:ILE:HD13	1.39	1.02

Continued on next page...

Continued from previous page...

Atom-1	Atom-2	Interatomic distance (Å)	Clash overlap (Å)
5:A:38:PHE:HE1	6:B:50:ILE:HG23	0.91	1.02
5:A:176:ALA:HA	6:B:47:LEU:HD21	1.43	1.01
5:A:239:LYS:HG3	5:A:368:PRO:HA	1.42	1.01
6:B:23:TRP:CE2	6:B:27:LYS:HB3	1.94	1.01
5:A:382:ARG:O	5:A:385:PRO:HD2	1.59	1.01
5:A:386:PRO:O	5:A:389:VAL:HG23	1.58	1.01
5:A:34:LEU:CD2	6:B:50:ILE:HD13	1.91	1.01
5:A:239:LYS:HB2	5:A:368:PRO:CA	1.90	1.00
5:A:385:PRO:CB	5:A:386:PRO:HD3	1.91	1.00
5:A:234:VAL:CB	5:A:235:VAL:HA	1.87	1.00
5:A:335:VAL:HG23	5:A:392:SER:CB	1.90	1.00
5:A:389:VAL:CB	5:A:390:MET:CB	2.30	0.99
5:A:239:LYS:CA	5:A:249:ALA:HB2	1.91	0.99
5:A:242:GLN:CG	5:A:243:GLY:HA2	1.92	0.99
5:A:258:VAL:O	5:A:259:VAL:HG22	1.61	0.99
5:A:260:TYR:CE1	5:A:423:ARG:HD3	1.95	0.99
5:A:334:CYS:HB2	5:A:392:SER:CA	1.92	0.99
5:A:231:ARG:CB	6:B:22:ILE:HD11	1.93	0.99
5:A:389:VAL:CB	5:A:390:MET:HA	1.85	0.99
6:B:26:ARG:HH22	6:B:30:LYS:HD2	0.85	0.99
5:A:243:GLY:HA3	5:A:247:TYR:CB	1.93	0.99
5:A:256:LEU:HD12	5:A:257:LYS:H	1.17	0.99
5:A:231:ARG:CG	6:B:22:ILE:HD12	1.94	0.98
5:A:258:VAL:O	5:A:259:VAL:HG13	1.61	0.98
5:A:261:VAL:HG21	5:A:388:THR:HG22	0.98	0.98
5:A:380:LEU:HB3	5:A:384:ILE:HD11	1.41	0.98
5:A:344:THR:HG23	5:A:345:THR:N	1.77	0.98
5:A:238:ALA:O	5:A:239:LYS:HG2	1.62	0.98
5:A:16:LEU:HD23	5:A:16:LEU:H	1.25	0.98
5:A:335:VAL:HG22	5:A:392:SER:OG	1.60	0.97
5:A:386:PRO:HB3	6:B:15:ARG:NH1	1.78	0.97
5:A:294:TYR:HA	5:A:299:ALA:HA	1.46	0.97
6:B:26:ARG:C	6:B:27:LYS:CD	2.33	0.97
5:A:230:ARG:CB	5:A:255:PRO:HG3	1.92	0.97
5:A:386:PRO:CB	6:B:15:ARG:HD2	1.95	0.97
6:B:33:TYR:O	6:B:36:VAL:HG12	1.63	0.96
6:B:26:ARG:CB	6:B:29:THR:CA	2.30	0.96
5:A:11:ILE:HD11	5:A:113:LEU:HD23	1.44	0.96
5:A:231:ARG:HB2	6:B:22:ILE:HD12	1.43	0.96
5:A:233:ILE:C	5:A:234:VAL:CG2	2.28	0.96
5:A:230:ARG:HB3	5:A:255:PRO:HG2	0.96	0.96

Continued on next page...

Continued from previous page...

Atom-1	Atom-2	Interatomic distance (Å)	Clash overlap (Å)
5:A:385:PRO:HB2	5:A:386:PRO:HD3	0.96	0.95
5:A:264:ILE:CG2	5:A:265:PRO:HD3	1.95	0.95
5:A:98:LEU:HA	5:A:103:ASN:HB2	1.46	0.95
5:A:237:TYR:HE2	5:A:239:LYS:CD	1.79	0.95
5:A:257:LYS:HG2	5:A:258:VAL:N	1.81	0.95
5:A:363:VAL:CG2	5:A:364:PRO:CD	2.44	0.95
5:A:253:HIS:O	5:A:254:LEU:CG	2.14	0.95
5:A:256:LEU:CD1	5:A:257:LYS:N	2.30	0.94
5:A:175:ALA:C	6:B:47:LEU:CD2	2.36	0.94
5:A:244:ARG:O	5:A:247:TYR:HE1	1.48	0.94
5:A:231:ARG:HG2	5:A:233:ILE:CD1	1.97	0.94
5:A:227:GLU:CB	5:A:257:LYS:HE3	1.98	0.94
5:A:239:LYS:HA	5:A:239:LYS:CE	1.97	0.94
5:A:260:TYR:CE1	5:A:423:ARG:CD	2.50	0.94
5:A:335:VAL:N	5:A:392:SER:CB	2.30	0.94
5:A:389:VAL:CG1	5:A:391:SER:CB	2.30	0.93
5:A:436:LEU:O	5:A:438:PRO:HD3	1.67	0.93
5:A:261:VAL:CB	5:A:388:THR:HG22	1.98	0.93
6:B:26:ARG:NH1	6:B:30:LYS:CB	2.31	0.93
6:B:26:ARG:NH1	6:B:30:LYS:HB2	1.82	0.93
2:E:490:C:H42	5:A:358:LYS:NZ	1.65	0.92
5:A:124:VAL:HG22	5:A:144:ILE:HD13	1.51	0.92
5:A:231:ARG:CB	6:B:22:ILE:HD12	1.96	0.92
5:A:257:LYS:CG	5:A:258:VAL:H	1.81	0.92
5:A:67:ILE:HA	5:A:72:THR:HG23	1.49	0.92
5:A:220:PHE:O	5:A:224:VAL:HG23	1.70	0.92
5:A:236:ASN:ND2	5:A:251:SER:HB3	1.80	0.92
5:A:231:ARG:N	5:A:255:PRO:HG3	1.85	0.92
5:A:176:ALA:HA	6:B:47:LEU:CG	2.00	0.91
5:A:176:ALA:HA	6:B:47:LEU:CD2	2.00	0.91
5:A:264:ILE:HG22	5:A:265:PRO:HD3	1.53	0.91
6:B:26:ARG:CG	6:B:29:THR:CA	2.46	0.91
5:A:157:LEU:HD23	5:A:160:ILE:HD12	1.52	0.91
5:A:227:GLU:HB3	5:A:257:LYS:HE3	1.51	0.91
5:A:257:LYS:NZ	5:A:422:TYR:HD2	1.68	0.91
5:A:38:PHE:HB2	6:B:54:ILE:HD13	1.52	0.90
5:A:349:PRO:CG	5:A:384:ILE:HD12	2.00	0.90
6:B:26:ARG:CG	6:B:30:LYS:N	2.35	0.90
6:B:61:ILE:HA	6:B:64:ILE:HG22	1.52	0.90
5:A:335:VAL:H	5:A:392:SER:CB	1.85	0.90
5:A:228:CYS:SG	6:B:28:PRO:HG3	2.11	0.90

Continued on next page...

Continued from previous page...

Atom-1	Atom-2	Interatomic distance (Å)	Clash overlap (Å)
5:A:254:LEU:CD2	5:A:255:PRO:O	2.19	0.90
5:A:344:THR:CG2	5:A:345:THR:H	1.84	0.89
5:A:234:VAL:HG11	5:A:235:VAL:HG23	1.54	0.89
5:A:242:GLN:CB	5:A:243:GLY:HA3	1.96	0.89
5:A:176:ALA:HA	6:B:47:LEU:HD11	1.55	0.89
5:A:261:VAL:CG1	5:A:388:THR:CG2	2.51	0.89
5:A:227:GLU:CG	5:A:257:LYS:CE	2.50	0.89
5:A:239:LYS:CA	5:A:239:LYS:HE2	2.02	0.89
5:A:73:LEU:HD21	5:A:122:GLU:HB2	1.53	0.89
5:A:390:MET:O	5:A:390:MET:SD	2.30	0.88
5:A:242:GLN:CA	5:A:247:TYR:HB3	2.03	0.88
3:F:1402:U:H5'	4:G:1521:G:O2'	1.72	0.88
6:B:58:ALA:O	6:B:61:ILE:N	2.07	0.88
5:A:242:GLN:HB3	5:A:247:TYR:CG	2.07	0.88
5:A:390:MET:HA	5:A:391:SER:CB	1.98	0.88
6:B:56:VAL:CG1	6:B:57:PRO:HD3	1.96	0.88
5:A:13:GLU:HG3	5:A:14:VAL:H	1.36	0.88
5:A:82:GLY:HA2	5:A:111:GLN:HE21	1.38	0.88
5:A:82:GLY:HA2	5:A:111:GLN:NE2	1.88	0.88
5:A:363:VAL:CG2	5:A:364:PRO:HD2	2.01	0.88
5:A:239:LYS:HB2	5:A:368:PRO:HB3	0.90	0.88
6:B:23:TRP:H	6:B:24:PRO:HD2	1.37	0.88
5:A:257:LYS:HZ2	5:A:422:TYR:HD2	1.17	0.87
6:B:26:ARG:HB3	6:B:29:THR:HA	0.89	0.87
6:B:29:THR:OG1	6:B:32:GLU:HB2	1.74	0.87
5:A:195:LYS:HB3	5:A:209:TYR:CD2	2.09	0.87
5:A:354:LYS:O	5:A:355:ARG:HG3	1.75	0.87
5:A:236:ASN:ND2	5:A:251:SER:HB2	1.89	0.87
5:A:242:GLN:H	5:A:247:TYR:HB3	0.72	0.87
5:A:239:LYS:HA	5:A:249:ALA:HB3	1.55	0.87
5:A:34:LEU:HD21	6:B:50:ILE:HD13	1.56	0.87
5:A:386:PRO:HB3	6:B:15:ARG:HD2	1.55	0.87
5:A:234:VAL:HG12	5:A:235:VAL:HA	0.87	0.87
5:A:80:THR:HG23	5:A:275:ASN:ND2	1.88	0.86
5:A:380:LEU:O	5:A:384:ILE:HG13	1.74	0.86
6:B:28:PRO:O	6:B:29:THR:HG23	1.75	0.86
5:A:38:PHE:HB3	6:B:54:ILE:HG21	1.56	0.86
5:A:46:TYR:HB3	5:A:146:GLN:HE22	1.37	0.86
7:C:44:GLU:HA	7:C:47:LEU:HB3	1.58	0.86
5:A:242:GLN:HG2	5:A:243:GLY:HA2	1.57	0.86
5:A:390:MET:CA	5:A:391:SER:HB3	2.02	0.86

Continued on next page...

Continued from previous page...

Atom-1	Atom-2	Interatomic distance (Å)	Clash overlap (Å)
6:B:56:VAL:HG13	6:B:57:PRO:N	1.91	0.86
5:A:254:LEU:HB3	5:A:255:PRO:C	1.95	0.85
5:A:390:MET:HG2	6:B:15:ARG:HH11	1.40	0.85
5:A:223:VAL:HG11	5:A:415:LEU:HA	1.59	0.85
5:A:227:GLU:CG	5:A:257:LYS:HE3	2.07	0.85
6:B:55:HIS:O	6:B:57:PRO:HD2	1.69	0.85
5:A:349:PRO:HG3	5:A:384:ILE:HD13	1.56	0.84
5:A:244:ARG:O	5:A:247:TYR:CE1	2.31	0.84
5:A:244:ARG:N	5:A:247:TYR:CE1	2.45	0.84
5:A:263:ASN:ND2	5:A:423:ARG:NH1	2.26	0.84
5:A:257:LYS:HD2	5:A:422:TYR:HE2	1.42	0.84
5:A:153:ILE:HD13	7:C:37:THR:HG23	1.59	0.83
5:A:176:ALA:HA	6:B:47:LEU:CD1	2.09	0.83
5:A:236:ASN:HD21	5:A:251:SER:HB2	1.44	0.83
5:A:242:GLN:CB	5:A:243:GLY:HA2	2.04	0.83
5:A:380:LEU:HB3	5:A:384:ILE:CD1	2.07	0.83
6:B:26:ARG:O	6:B:27:LYS:CD	2.24	0.83
6:B:61:ILE:HA	6:B:64:ILE:CG2	2.08	0.83
5:A:390:MET:CG	6:B:15:ARG:HH12	1.91	0.83
5:A:29:TRP:O	5:A:32:ILE:HG22	1.79	0.83
5:A:240:ARG:HG2	5:A:366:ILE:CD1	2.10	0.82
5:A:321:ILE:HD12	5:A:322:HIS:H	1.42	0.82
5:A:237:TYR:CE2	5:A:239:LYS:CD	2.57	0.82
5:A:389:VAL:HG12	5:A:390:MET:HA	0.83	0.82
5:A:238:ALA:CB	5:A:370:GLU:OE2	2.27	0.82
5:A:254:LEU:HB3	5:A:255:PRO:HA	0.85	0.82
5:A:34:LEU:CD2	6:B:50:ILE:CD1	2.58	0.82
6:B:36:VAL:O	6:B:40:THR:HG23	1.79	0.81
5:A:233:ILE:C	5:A:234:VAL:HG23	1.98	0.81
6:B:29:THR:OG1	6:B:32:GLU:CB	2.28	0.81
5:A:334:CYS:HB2	5:A:392:SER:CB	2.10	0.81
5:A:34:LEU:HD23	6:B:50:ILE:CD1	2.11	0.81
5:A:366:ILE:HG13	5:A:368:PRO:CG	2.10	0.81
5:A:261:VAL:HG22	5:A:347:LEU:HD12	1.61	0.81
6:B:55:HIS:CG	6:B:56:VAL:H	1.97	0.81
5:A:239:LYS:C	5:A:249:ALA:CB	2.47	0.81
5:A:33:VAL:HG21	5:A:161:VAL:HG22	1.63	0.81
5:A:63:THR:HG23	5:A:76:GLY:H	1.46	0.80
2:E:490:C:H42	5:A:358:LYS:HZ1	1.27	0.80
5:A:226:ALA:HB1	5:A:259:VAL:HG11	1.62	0.80
5:A:242:GLN:CB	5:A:247:TYR:HD2	1.95	0.80

Continued on next page...

Continued from previous page...

Atom-1	Atom-2	Interatomic distance (Å)	Clash overlap (Å)
5:A:263:ASN:O	5:A:267:ILE:HG13	1.82	0.80
5:A:331:ILE:HD12	5:A:393:ALA:HA	0.84	0.80
5:A:234:VAL:HB	5:A:235:VAL:HB	0.81	0.80
5:A:334:CYS:HB3	5:A:392:SER:HA	1.63	0.80
5:A:369:GLY:O	5:A:370:GLU:HG3	1.80	0.80
5:A:238:ALA:O	5:A:239:LYS:CG	2.30	0.80
5:A:231:ARG:H	5:A:255:PRO:HG3	1.47	0.80
5:A:381:LYS:O	5:A:385:PRO:CD	2.30	0.80
5:A:240:ARG:HG2	5:A:366:ILE:HD11	1.63	0.80
5:A:258:VAL:O	5:A:259:VAL:CG2	2.30	0.80
5:A:386:PRO:CB	6:B:15:ARG:NH1	2.45	0.79
6:B:58:ALA:O	6:B:60:TYR:N	2.14	0.79
5:A:239:LYS:CB	5:A:368:PRO:CB	2.44	0.79
5:A:242:GLN:HB3	5:A:243:GLY:HA2	1.61	0.79
5:A:239:LYS:CB	5:A:368:PRO:CA	2.61	0.79
5:A:391:SER:H	5:A:394:PHE:H	1.27	0.79
5:A:238:ALA:O	5:A:239:LYS:CE	2.30	0.79
5:A:258:VAL:O	5:A:259:VAL:CG1	2.30	0.79
5:A:389:VAL:HB	5:A:390:MET:HB3	0.80	0.79
6:B:15:ARG:O	6:B:18:VAL:CG1	2.30	0.79
5:A:239:LYS:HE2	5:A:249:ALA:HB3	1.64	0.79
6:B:55:HIS:ND1	6:B:56:VAL:N	2.30	0.79
6:B:18:VAL:O	6:B:21:VAL:HG12	1.82	0.79
5:A:354:LYS:O	5:A:355:ARG:CG	2.31	0.78
5:A:231:ARG:O	5:A:233:ILE:CD1	2.30	0.78
5:A:232:ARG:C	5:A:233:ILE:CD1	2.45	0.78
5:A:244:ARG:N	5:A:247:TYR:CD1	2.51	0.78
5:A:195:LYS:HD3	5:A:209:TYR:HE2	1.46	0.78
5:A:228:CYS:SG	6:B:33:TYR:HA	2.24	0.78
5:A:259:VAL:O	5:A:260:TYR:HB3	1.83	0.78
5:A:357:LYS:HD2	5:A:374:LYS:HA	1.64	0.78
6:B:28:PRO:HB2	6:B:32:GLU:OE1	1.82	0.78
5:A:98:LEU:HA	5:A:103:ASN:CB	2.12	0.78
5:A:382:ARG:O	5:A:385:PRO:CD	2.32	0.78
5:A:157:LEU:O	5:A:161:VAL:HG23	1.84	0.77
5:A:239:LYS:O	5:A:240:ARG:CB	2.32	0.77
6:B:26:ARG:HB3	6:B:29:THR:N	1.97	0.77
5:A:232:ARG:O	5:A:233:ILE:CD1	2.30	0.77
5:A:369:GLY:O	5:A:370:GLU:CG	2.32	0.77
6:B:26:ARG:NH1	6:B:30:LYS:HB3	1.99	0.77
5:A:366:ILE:CG1	5:A:368:PRO:CD	2.34	0.77

Continued on next page...

Continued from previous page...

Atom-1	Atom-2	Interatomic distance (Å)	Clash overlap (Å)
6:B:28:PRO:O	6:B:29:THR:CG2	2.32	0.77
6:B:55:HIS:C	6:B:57:PRO:CD	2.42	0.77
5:A:335:VAL:CG2	5:A:392:SER:CB	2.57	0.77
5:A:188:GLY:HA2	6:B:52:TYR:HE1	1.50	0.77
5:A:239:LYS:CB	5:A:368:PRO:HA	2.13	0.77
5:A:39:ILE:N	6:B:54:ILE:HD11	1.99	0.77
5:A:238:ALA:HB2	5:A:370:GLU:OE2	1.83	0.77
5:A:335:VAL:CA	5:A:392:SER:HB3	2.15	0.77
5:A:341:TRP:C	5:A:344:THR:HG22	2.06	0.76
5:A:354:LYS:O	5:A:355:ARG:CB	2.33	0.76
6:B:46:LEU:O	6:B:49:ILE:HG22	1.85	0.76
5:A:403:ASN:HD21	5:A:412:THR:H	1.33	0.76
6:B:26:ARG:CD	6:B:27:LYS:NZ	2.45	0.76
5:A:33:VAL:HG13	5:A:157:LEU:HD22	1.66	0.76
5:A:257:LYS:HD2	5:A:422:TYR:CE2	2.19	0.76
5:A:79:VAL:O	5:A:83:ILE:HG13	1.86	0.76
5:A:258:VAL:C	5:A:259:VAL:HG13	2.05	0.76
6:B:56:VAL:N	6:B:57:PRO:HD2	1.90	0.76
5:A:260:TYR:OH	5:A:423:ARG:HD2	1.86	0.76
6:B:52:TYR:O	6:B:56:VAL:HG12	1.86	0.76
5:A:390:MET:O	5:A:390:MET:CE	2.33	0.76
6:B:5:LYS:O	6:B:8:VAL:HG12	1.86	0.76
5:A:239:LYS:HA	5:A:249:ALA:HB2	1.62	0.75
5:A:75:ILE:HG22	5:A:79:VAL:HG23	1.68	0.75
5:A:362:PHE:O	5:A:363:VAL:CG1	2.30	0.75
6:B:23:TRP:H	6:B:24:PRO:CD	1.97	0.75
1:D:90:U:H3'	1:D:91:A:H5''	1.68	0.75
5:A:257:LYS:NZ	5:A:422:TYR:CD2	2.50	0.75
5:A:425:TYR:CG	6:B:39:VAL:HG21	2.21	0.75
5:A:261:VAL:CB	5:A:388:THR:CG2	2.65	0.75
5:A:373:ALA:O	5:A:374:LYS:CB	2.33	0.75
5:A:390:MET:C	5:A:394:PHE:HB2	2.06	0.75
6:B:23:TRP:CE2	6:B:27:LYS:CB	2.70	0.75
5:A:262:SER:C	5:A:265:PRO:HD2	2.07	0.75
5:A:39:ILE:HG12	6:B:54:ILE:HD11	1.68	0.75
5:A:389:VAL:HG12	5:A:391:SER:HB3	0.79	0.75
5:A:261:VAL:CG2	5:A:347:LEU:CD1	2.64	0.74
5:A:256:LEU:O	5:A:257:LYS:HB2	1.86	0.74
5:A:367:ARG:N	5:A:368:PRO:CD	2.50	0.74
5:A:38:PHE:CB	6:B:54:ILE:HG21	2.17	0.74
5:A:240:ARG:CG	5:A:366:ILE:HD11	2.17	0.74

Continued on next page...

Continued from previous page...

Atom-1	Atom-2	Interatomic distance (Å)	Clash overlap (Å)
5:A:386:PRO:HB3	6:B:15:ARG:CD	2.16	0.74
5:A:103:ASN:HA	5:A:106:LEU:HD12	1.69	0.74
5:A:238:ALA:CB	5:A:250:GLN:O	2.36	0.74
7:C:36:VAL:O	7:C:39:ALA:HB3	1.88	0.74
5:A:261:VAL:HG21	5:A:347:LEU:HD13	1.68	0.74
5:A:228:CYS:SG	6:B:33:TYR:CA	2.76	0.74
5:A:239:LYS:O	5:A:240:ARG:HB2	1.87	0.74
5:A:230:ARG:O	5:A:231:ARG:HB2	1.88	0.73
5:A:238:ALA:HB3	5:A:250:GLN:O	1.88	0.73
5:A:390:MET:O	5:A:390:MET:HE1	1.87	0.73
5:A:63:THR:HG23	5:A:76:GLY:N	2.03	0.73
6:B:27:LYS:HD3	6:B:27:LYS:N	2.04	0.73
5:A:228:CYS:SG	6:B:28:PRO:CG	2.77	0.73
5:A:43:ILE:O	5:A:70:LEU:HD13	1.88	0.72
5:A:237:TYR:O	5:A:250:GLN:CG	2.37	0.72
5:A:335:VAL:H	5:A:392:SER:HB2	1.53	0.72
5:A:261:VAL:CG2	5:A:347:LEU:HD12	2.19	0.72
5:A:331:ILE:HD13	5:A:392:SER:O	1.89	0.72
5:A:391:SER:N	5:A:394:PHE:CB	2.52	0.72
5:A:425:TYR:CD2	6:B:39:VAL:HG21	2.24	0.72
2:E:480:A:H3'	2:E:481:G:H5''	1.70	0.72
6:B:26:ARG:HG2	6:B:29:THR:C	2.10	0.72
6:B:58:ALA:O	6:B:61:ILE:HG22	1.88	0.72
5:A:86:GLN:O	5:A:340:PHE:HD2	1.73	0.72
5:A:175:ALA:O	6:B:47:LEU:HD23	1.90	0.72
6:B:60:TYR:O	6:B:64:ILE:HG22	1.90	0.72
5:A:62:ILE:HD12	5:A:62:ILE:N	1.95	0.72
5:A:175:ALA:O	6:B:47:LEU:CD2	2.37	0.72
5:A:357:LYS:HG2	5:A:373:ALA:HB1	1.70	0.72
5:A:233:ILE:CG2	5:A:234:VAL:N	2.31	0.72
5:A:102:GLU:O	5:A:106:LEU:HG	1.90	0.71
5:A:239:LYS:N	5:A:249:ALA:HB1	2.05	0.71
5:A:259:VAL:O	5:A:260:TYR:CB	2.38	0.71
5:A:230:ARG:O	5:A:231:ARG:CB	2.38	0.71
6:B:5:LYS:O	6:B:8:VAL:CG1	2.39	0.71
5:A:239:LYS:CG	5:A:368:PRO:CA	2.63	0.71
6:B:61:ILE:CA	6:B:64:ILE:HG22	2.21	0.71
5:A:249:ALA:O	5:A:250:GLN:HB2	1.89	0.71
5:A:237:TYR:O	5:A:250:GLN:HG2	1.91	0.70
5:A:281:LEU:O	5:A:284:TYR:HB3	1.91	0.70
5:A:3:LYS:HE3	5:A:3:LYS:HA	1.74	0.70

Continued on next page...

Continued from previous page...

Atom-1	Atom-2	Interatomic distance (Å)	Clash overlap (Å)
5:A:15:GLU:OE1	5:A:17:PRO:HG3	1.90	0.70
5:A:152:ILE:HD13	5:A:155:ILE:HD12	1.72	0.70
6:B:25:THR:HG22	6:B:29:THR:HG22	1.72	0.70
5:A:243:GLY:CA	5:A:247:TYR:CD1	2.74	0.70
6:B:26:ARG:HB3	6:B:28:PRO:O	1.92	0.70
5:A:264:ILE:HG23	5:A:265:PRO:HD3	1.73	0.70
6:B:26:ARG:HB3	6:B:28:PRO:C	2.12	0.70
5:A:195:LYS:HD3	5:A:209:TYR:CE2	2.26	0.69
6:B:23:TRP:NE1	6:B:27:LYS:HB2	2.06	0.69
5:A:242:GLN:HB2	5:A:247:TYR:CD2	2.26	0.69
5:A:366:ILE:HD11	5:A:368:PRO:HG3	1.72	0.69
6:B:26:ARG:NH2	6:B:30:LYS:CB	2.45	0.69
5:A:241:GLN:CD	5:A:242:GLN:O	2.30	0.69
5:A:416:LEU:O	5:A:420:ILE:HG13	1.92	0.69
5:A:38:PHE:HB2	6:B:54:ILE:CD1	2.20	0.69
6:B:26:ARG:HG2	6:B:29:THR:HA	1.68	0.69
4:G:1534:U:H2'	4:G:1536:C:N3	2.08	0.69
5:A:166:ILE:HD13	5:A:428:LEU:CD2	2.23	0.69
5:A:366:ILE:HG13	5:A:368:PRO:HD3	0.70	0.69
6:B:47:LEU:O	6:B:50:ILE:HG22	1.92	0.69
5:A:226:ALA:CB	5:A:259:VAL:HG11	2.23	0.69
5:A:229:MET:HB2	5:A:258:VAL:HG11	1.75	0.69
5:A:264:ILE:HG21	5:A:341:TRP:CZ2	2.27	0.69
5:A:235:VAL:O	5:A:236:ASN:CG	2.32	0.68
5:A:243:GLY:CA	5:A:247:TYR:CB	2.62	0.68
6:B:23:TRP:NE1	6:B:27:LYS:CB	2.55	0.68
5:A:335:VAL:HG22	5:A:392:SER:HG	1.56	0.68
5:A:280:GLY:HA2	5:A:291:LEU:HD12	1.74	0.68
5:A:85:MET:HE2	5:A:111:GLN:HB2	1.75	0.68
5:A:240:ARG:CG	5:A:366:ILE:CD1	2.70	0.68
5:A:260:TYR:CE1	5:A:423:ARG:HD2	2.27	0.68
5:A:331:ILE:O	5:A:392:SER:CB	2.28	0.68
5:A:231:ARG:CD	6:B:22:ILE:HD12	2.24	0.68
6:B:56:VAL:CG1	6:B:57:PRO:HD2	2.21	0.68
5:A:363:VAL:HG13	5:A:364:PRO:N	2.08	0.68
6:B:50:ILE:O	6:B:53:ILE:HG22	1.94	0.67
5:A:335:VAL:O	5:A:339:ILE:HG13	1.94	0.67
5:A:152:ILE:HA	5:A:155:ILE:HD12	1.76	0.67
5:A:231:ARG:CA	6:B:22:ILE:HD11	2.24	0.67
5:A:280:GLY:CA	5:A:291:LEU:HD12	2.25	0.67
3:F:1386:C:H2'	3:F:1387:A:C8	2.29	0.67

Continued on next page...

Continued from previous page...

Atom-1	Atom-2	Interatomic distance (Å)	Clash overlap (Å)
5:A:232:ARG:NH2	6:B:29:THR:HG21	2.09	0.67
5:A:239:LYS:O	5:A:240:ARG:HG3	1.95	0.67
5:A:261:VAL:CG1	5:A:388:THR:HG21	2.09	0.67
5:A:366:ILE:CB	5:A:368:PRO:HD3	2.25	0.67
6:B:26:ARG:N	6:B:28:PRO:O	2.28	0.67
5:A:80:THR:HA	5:A:83:ILE:HD12	1.76	0.67
5:A:260:TYR:O	5:A:261:VAL:C	2.33	0.67
6:B:22:ILE:HG23	6:B:22:ILE:O	1.95	0.67
1:D:83:A:N6	1:D:101:A:H5'	2.09	0.66
5:A:254:LEU:HB3	5:A:255:PRO:O	1.94	0.66
5:A:151:SER:O	5:A:155:ILE:HG13	1.95	0.66
5:A:365:GLY:O	5:A:366:ILE:CB	2.42	0.66
5:A:13:GLU:HG3	5:A:14:VAL:N	2.10	0.66
6:B:55:HIS:CG	6:B:56:VAL:N	2.60	0.66
5:A:240:ARG:O	5:A:241:GLN:CG	2.43	0.66
5:A:239:LYS:O	5:A:240:ARG:CG	2.44	0.66
5:A:317:ILE:O	5:A:320:PRO:HD3	1.96	0.66
5:A:277:GLN:NE2	5:A:308:SER:HB3	2.11	0.66
5:A:239:LYS:N	5:A:249:ALA:CB	2.59	0.65
5:A:350:LYS:O	5:A:351:SER:CB	2.43	0.65
5:A:84:ILE:O	5:A:87:LEU:HB2	1.96	0.65
5:A:369:GLY:O	5:A:370:GLU:CB	2.44	0.65
5:A:380:LEU:C	5:A:384:ILE:HG13	2.16	0.65
4:G:1536:C:H1'	4:G:1537:G:N2	2.12	0.65
4:G:1548:A:H2'	4:G:1549:A:C8	2.32	0.65
5:A:373:ALA:O	5:A:374:LYS:HB3	1.95	0.65
1:D:90:U:H3'	1:D:91:A:C5'	2.26	0.65
6:B:56:VAL:O	6:B:58:ALA:N	2.30	0.65
5:A:224:VAL:O	5:A:226:ALA:N	2.30	0.65
6:B:23:TRP:CZ2	6:B:27:LYS:HB3	2.31	0.65
5:A:65:SER:O	5:A:66:ARG:HB2	1.96	0.65
5:A:341:TRP:O	5:A:344:THR:CG2	2.44	0.65
5:A:275:ASN:O	5:A:279:TRP:HB2	1.95	0.65
5:A:240:ARG:HD2	5:A:361:ALA:HB2	1.79	0.65
5:A:324:ILE:O	5:A:328:ILE:HG13	1.97	0.65
5:A:341:TRP:O	5:A:344:THR:HG22	1.95	0.65
6:B:27:LYS:N	6:B:28:PRO:HA	2.12	0.65
5:A:261:VAL:CG2	5:A:347:LEU:HD13	2.27	0.64
5:A:391:SER:N	5:A:394:PHE:HB2	2.12	0.64
6:B:23:TRP:N	6:B:24:PRO:CD	2.56	0.64
5:A:29:TRP:NE1	5:A:164:TYR:HD2	1.94	0.64

Continued on next page...

Continued from previous page...

Atom-1	Atom-2	Interatomic distance (Å)	Clash overlap (Å)
6:B:55:HIS:O	6:B:56:VAL:C	2.36	0.64
5:A:354:LYS:O	5:A:355:ARG:HB2	1.96	0.64
5:A:166:ILE:HD13	5:A:428:LEU:HD21	1.80	0.64
5:A:264:ILE:N	5:A:265:PRO:CD	2.61	0.64
5:A:224:VAL:O	5:A:225:TYR:C	2.36	0.64
5:A:401:ILE:O	5:A:405:ILE:HG22	1.98	0.64
5:A:231:ARG:HD2	6:B:22:ILE:HD12	1.80	0.64
5:A:231:ARG:HG3	6:B:22:ILE:HD12	1.78	0.64
5:A:327:MET:O	5:A:331:ILE:HG12	1.98	0.64
5:A:391:SER:O	5:A:393:ALA:N	2.31	0.63
3:F:1395:A:H4'	3:F:1397:U:C5	2.33	0.63
5:A:233:ILE:O	5:A:234:VAL:HG23	1.82	0.63
5:A:365:GLY:O	5:A:366:ILE:HG23	1.99	0.63
6:B:53:ILE:O	6:B:57:PRO:CG	2.40	0.63
5:A:62:ILE:H	5:A:62:ILE:CD1	1.87	0.63
5:A:260:TYR:O	5:A:263:ASN:N	2.31	0.63
4:G:1537:G:C8	5:A:375:TYR:CE2	2.54	0.63
5:A:240:ARG:O	5:A:241:GLN:HG3	1.99	0.63
6:B:23:TRP:O	6:B:24:PRO:C	2.36	0.63
5:A:39:ILE:N	6:B:54:ILE:CD1	2.62	0.63
6:B:56:VAL:O	6:B:57:PRO:C	2.37	0.63
5:A:241:GLN:HB3	5:A:242:GLN:HA	0.72	0.63
6:B:29:THR:O	6:B:31:ASP:N	2.30	0.63
6:B:26:ARG:CG	6:B:29:THR:C	2.67	0.63
6:B:56:VAL:HG12	6:B:57:PRO:CD	2.24	0.63
5:A:176:ALA:CA	6:B:47:LEU:HD11	2.26	0.63
5:A:226:ALA:HB1	5:A:259:VAL:CG1	2.29	0.63
5:A:389:VAL:CG1	5:A:390:MET:CB	2.70	0.63
6:B:24:PRO:O	6:B:25:THR:C	2.37	0.63
6:B:29:THR:HG1	6:B:32:GLU:HB2	1.63	0.63
6:B:62:LYS:O	6:B:66:LYS:HB2	1.98	0.62
5:A:231:ARG:CG	6:B:22:ILE:CD1	2.70	0.62
5:A:258:VAL:O	5:A:259:VAL:CB	2.46	0.62
5:A:149:PHE:HD2	7:C:40:PHE:HZ	1.45	0.62
5:A:341:TRP:CA	5:A:344:THR:HG22	2.29	0.62
6:B:30:LYS:O	6:B:30:LYS:HG2	1.98	0.62
5:A:249:ALA:O	5:A:250:GLN:CB	2.48	0.62
5:A:261:VAL:C	5:A:263:ASN:H	2.01	0.62
5:A:288:ILE:HD12	5:A:288:ILE:N	2.15	0.62
5:A:164:TYR:CE1	7:C:30:PRO:HG2	2.35	0.62
5:A:231:ARG:C	5:A:233:ILE:HD13	2.20	0.62

Continued on next page...

Continued from previous page...

Atom-1	Atom-2	Interatomic distance (Å)	Clash overlap (Å)
1:D:92:U:O3'	5:A:245:ARG:NH1	2.32	0.62
5:A:75:ILE:HG22	5:A:79:VAL:CG2	2.30	0.62
5:A:129:ALA:HB1	5:A:281:LEU:HD12	1.82	0.62
5:A:239:LYS:CA	5:A:368:PRO:HB3	2.29	0.62
5:A:356:ILE:HG22	5:A:356:ILE:O	2.00	0.62
5:A:366:ILE:CD1	5:A:368:PRO:HG3	2.29	0.62
5:A:38:PHE:HB3	6:B:54:ILE:CG2	2.29	0.62
5:A:52:ILE:HG23	5:A:132:PHE:HA	1.80	0.62
5:A:5:ILE:N	5:A:6:PRO:HD2	2.15	0.62
5:A:253:HIS:C	5:A:254:LEU:HG	2.19	0.62
5:A:334:CYS:HB2	5:A:392:SER:HB2	1.82	0.62
5:A:365:GLY:C	5:A:366:ILE:HG12	2.11	0.62
5:A:136:THR:HB	5:A:139:LEU:HB3	1.82	0.61
5:A:219:VAL:HG12	5:A:220:PHE:N	2.14	0.61
5:A:243:GLY:C	5:A:247:TYR:CG	2.70	0.61
5:A:384:ILE:O	5:A:385:PRO:C	2.38	0.61
5:A:398:LEU:O	5:A:401:ILE:HG22	2.00	0.61
5:A:88:LEU:C	5:A:90:GLY:H	2.03	0.61
5:A:232:ARG:HA	5:A:255:PRO:HD3	1.81	0.61
5:A:239:LYS:HG2	5:A:368:PRO:HA	1.72	0.61
5:A:256:LEU:HD12	5:A:256:LEU:C	2.14	0.61
5:A:234:VAL:CG1	5:A:235:VAL:CB	2.75	0.61
5:A:402:ALA:O	5:A:405:ILE:HG23	1.99	0.61
5:A:261:VAL:O	5:A:263:ASN:N	2.33	0.61
6:B:12:ARG:O	6:B:16:THR:HG23	2.01	0.61
6:B:50:ILE:O	6:B:54:ILE:HG22	2.00	0.61
5:A:242:GLN:HG2	5:A:243:GLY:CA	2.28	0.61
4:G:1532:A:H2'	4:G:1533:C:C6	2.36	0.61
5:A:391:SER:C	5:A:393:ALA:N	2.50	0.61
5:A:244:ARG:C	5:A:247:TYR:CE1	2.74	0.61
5:A:371:GLN:O	5:A:373:ALA:O	2.19	0.61
4:G:1526:C:H2'	4:G:1527:G:O4'	2.00	0.60
5:A:175:ALA:C	6:B:47:LEU:HD23	2.20	0.60
5:A:237:TYR:CD2	5:A:238:ALA:O	2.53	0.60
5:A:23:PHE:HE1	5:A:431:GLU:HB2	1.65	0.60
5:A:341:TRP:HA	5:A:344:THR:HG22	1.83	0.60
5:A:11:ILE:HD11	5:A:113:LEU:CD2	2.27	0.60
5:A:16:LEU:HD23	5:A:16:LEU:N	2.05	0.60
5:A:100:ILE:HG22	5:A:102:GLU:H	1.67	0.60
5:A:157:LEU:HA	5:A:160:ILE:HD12	1.84	0.60
5:A:234:VAL:CG1	5:A:235:VAL:HG23	2.30	0.60

Continued on next page...

Continued from previous page...

Atom-1	Atom-2	Interatomic distance (Å)	Clash overlap (Å)
6:B:27:LYS:N	6:B:28:PRO:CA	2.64	0.60
5:A:5:ILE:HG22	5:A:9:GLU:CD	2.22	0.60
5:A:43:ILE:HB	5:A:70:LEU:HD22	1.84	0.60
5:A:83:ILE:HG23	5:A:337:PHE:CZ	2.36	0.60
5:A:244:ARG:O	5:A:245:ARG:HB2	2.02	0.60
5:A:239:LYS:CE	5:A:249:ALA:HB3	2.31	0.60
5:A:332:ILE:HG13	5:A:333:THR:N	2.17	0.60
6:B:28:PRO:C	6:B:29:THR:HG23	2.21	0.60
6:B:26:ARG:NH2	6:B:30:LYS:CD	2.45	0.60
5:A:247:TYR:O	5:A:248:ALA:C	2.40	0.60
5:A:341:TRP:HA	5:A:344:THR:CG2	2.31	0.60
6:B:46:LEU:O	6:B:49:ILE:CG2	2.49	0.60
5:A:335:VAL:HG12	5:A:339:ILE:HD11	1.84	0.59
5:A:361:ALA:N	5:A:370:GLU:OE1	2.33	0.59
5:A:38:PHE:CE1	6:B:50:ILE:CG2	2.57	0.59
2:E:492:A:H2'	2:E:493:G:O4'	2.01	0.59
5:A:398:LEU:HD23	5:A:415:LEU:CD1	2.32	0.59
5:A:83:ILE:HG21	5:A:272:LEU:HD23	1.84	0.59
5:A:135:LEU:H	5:A:135:LEU:HD12	1.68	0.59
5:A:152:ILE:HA	5:A:155:ILE:CD1	2.33	0.59
5:A:391:SER:N	5:A:394:PHE:H	1.98	0.59
5:A:415:LEU:O	5:A:416:LEU:C	2.41	0.59
6:B:26:ARG:NH2	6:B:30:LYS:CG	2.65	0.59
5:A:233:ILE:HD12	5:A:233:ILE:N	2.15	0.59
5:A:241:GLN:CB	5:A:242:GLN:CA	2.42	0.59
1:D:92:U:H4'	5:A:245:ARG:NH1	2.18	0.59
5:A:88:LEU:O	5:A:90:GLY:N	2.36	0.59
5:A:391:SER:HA	5:A:394:PHE:HB3	1.84	0.59
5:A:55:ILE:HG22	5:A:67:ILE:HD12	1.84	0.59
5:A:256:LEU:O	5:A:257:LYS:CB	2.49	0.59
5:A:264:ILE:CG2	5:A:265:PRO:CD	2.78	0.59
5:A:256:LEU:HD12	5:A:257:LYS:CA	2.27	0.59
5:A:93:ILE:HG22	5:A:94:ILE:HG13	1.84	0.59
5:A:200:LEU:HD23	5:A:205:PRO:HG3	1.85	0.59
5:A:391:SER:N	5:A:394:PHE:HB3	2.17	0.59
5:A:3:LYS:C	5:A:5:ILE:H	2.06	0.59
5:A:254:LEU:CB	5:A:255:PRO:O	2.51	0.59
6:B:36:VAL:HG13	6:B:37:ALA:N	2.17	0.59
2:E:490:C:N4	5:A:358:LYS:NZ	2.45	0.58
5:A:211:ALA:HB3	5:A:212:PRO:CD	2.33	0.58
5:A:231:ARG:C	5:A:233:ILE:CD1	2.70	0.58

Continued on next page...

Continued from previous page...

Atom-1	Atom-2	Interatomic distance (Å)	Clash overlap (Å)
6:B:26:ARG:HG2	6:B:29:THR:CA	2.23	0.58
1:D:100:U:OP1	1:D:100:U:H2'	2.03	0.58
5:A:254:LEU:CB	5:A:255:PRO:CA	2.31	0.58
5:A:39:ILE:HG12	6:B:54:ILE:CD1	2.33	0.58
5:A:380:LEU:O	5:A:384:ILE:CG1	2.48	0.58
6:B:5:LYS:C	6:B:8:VAL:HG12	2.23	0.58
5:A:38:PHE:CB	6:B:54:ILE:CD1	2.62	0.58
5:A:52:ILE:HD12	5:A:52:ILE:N	2.19	0.58
5:A:242:GLN:H	5:A:247:TYR:CA	2.13	0.58
5:A:34:LEU:O	5:A:37:TYR:HB3	2.04	0.58
5:A:260:TYR:CZ	5:A:423:ARG:HD2	2.37	0.58
5:A:353:ALA:C	5:A:357:LYS:HE2	2.24	0.58
5:A:403:ASN:HD21	5:A:412:THR:HG22	1.68	0.58
5:A:39:ILE:CA	6:B:54:ILE:HD11	2.34	0.58
6:B:64:ILE:HG12	6:B:64:ILE:O	2.04	0.58
5:A:225:TYR:HA	6:B:33:TYR:HE2	1.69	0.58
5:A:260:TYR:O	5:A:262:SER:N	2.37	0.58
5:A:386:PRO:O	5:A:387:LEU:C	2.40	0.58
5:A:388:THR:O	5:A:389:VAL:C	2.40	0.58
5:A:306:TYR:C	5:A:307:LEU:HD23	2.24	0.58
4:G:1544:A:H2'	4:G:1545:A:C8	2.39	0.57
6:B:51:GLY:O	6:B:55:HIS:CB	2.52	0.57
5:A:16:LEU:H	5:A:16:LEU:CD2	2.07	0.57
5:A:176:ALA:CA	6:B:47:LEU:CD2	2.60	0.57
5:A:230:ARG:CG	5:A:255:PRO:HG2	2.34	0.57
3:F:1395:A:H4'	3:F:1397:U:C4	2.39	0.57
5:A:39:ILE:CG1	6:B:54:ILE:HD11	2.33	0.57
5:A:363:VAL:HG22	5:A:364:PRO:N	2.18	0.57
7:C:30:PRO:O	7:C:34:ILE:HG12	2.03	0.57
5:A:390:MET:HG3	6:B:15:ARG:NH1	2.16	0.57
6:B:49:ILE:HG23	6:B:50:ILE:N	2.20	0.57
5:A:12:PRO:HB3	7:C:28:VAL:HG21	1.87	0.57
5:A:23:PHE:CD1	5:A:431:GLU:HB3	2.40	0.57
5:A:240:ARG:HD2	5:A:361:ALA:CB	2.34	0.57
6:B:26:ARG:O	6:B:26:ARG:HG3	2.04	0.57
5:A:166:ILE:HG22	5:A:167:GLY:H	1.70	0.57
7:C:32:HIS:O	7:C:36:VAL:HG23	2.05	0.57
5:A:141:PHE:CZ	5:A:145:ILE:HD11	2.40	0.57
5:A:236:ASN:OD1	5:A:236:ASN:C	2.43	0.57
5:A:391:SER:CA	5:A:394:PHE:HB3	2.35	0.57
5:A:98:LEU:O	5:A:99:SER:C	2.43	0.57

Continued on next page...

Continued from previous page...

Atom-1	Atom-2	Interatomic distance (Å)	Clash overlap (Å)
5:A:135:LEU:O	5:A:137:PRO:HD3	2.04	0.57
5:A:243:GLY:CA	5:A:247:TYR:CD2	2.76	0.56
5:A:286:MET:O	5:A:286:MET:HG2	2.06	0.56
5:A:415:LEU:HD23	5:A:416:LEU:N	2.21	0.56
5:A:262:SER:HA	5:A:265:PRO:HG2	1.86	0.56
5:A:365:GLY:C	5:A:366:ILE:HG23	2.25	0.56
5:A:189:PRO:C	5:A:191:GLY:H	2.09	0.56
5:A:363:VAL:CG2	5:A:364:PRO:HD3	2.34	0.56
6:B:18:VAL:O	6:B:21:VAL:CG1	2.53	0.56
6:B:47:LEU:O	6:B:50:ILE:CG2	2.53	0.56
5:A:238:ALA:C	5:A:239:LYS:HG2	2.25	0.56
5:A:390:MET:HG3	6:B:15:ARG:HH12	1.70	0.56
5:A:403:ASN:HD21	5:A:412:THR:N	2.03	0.56
5:A:361:ALA:O	5:A:362:PHE:CB	2.53	0.56
6:B:58:ALA:O	6:B:59:THR:C	2.43	0.56
1:D:82:U:H2'	1:D:83:A:C8	2.41	0.56
1:D:103:A:H2'	1:D:104:A:O4'	2.05	0.56
5:A:80:THR:O	5:A:83:ILE:HB	2.05	0.56
5:A:147:ILE:HG22	5:A:148:ALA:N	2.20	0.56
5:A:182:ILE:HD12	6:B:44:ILE:HD11	1.87	0.56
5:A:242:GLN:CG	5:A:243:GLY:CA	2.66	0.56
4:G:1548:A:H2'	4:G:1549:A:H8	1.70	0.56
2:E:499:U:H2'	2:E:500:G:O4'	2.06	0.56
5:A:30:THR:O	5:A:33:VAL:HG23	2.05	0.56
5:A:156:TYR:O	5:A:160:ILE:HG13	2.06	0.56
5:A:235:VAL:O	5:A:236:ASN:CB	2.53	0.56
6:B:56:VAL:HG12	6:B:57:PRO:HD2	1.86	0.56
5:A:34:LEU:HD11	6:B:47:LEU:CD1	2.36	0.56
1:D:83:A:H61	1:D:101:A:H5'	1.70	0.55
3:F:1386:C:H2'	3:F:1387:A:H8	1.68	0.55
5:A:116:ILE:H	5:A:116:ILE:HD12	1.71	0.55
5:A:420:ILE:O	5:A:424:MET:HB2	2.05	0.55
6:B:41:ALA:O	6:B:44:ILE:HG22	2.06	0.55
5:A:85:MET:HE1	5:A:111:GLN:N	2.21	0.55
5:A:167:GLY:HA2	5:A:427:GLN:NE2	2.20	0.55
5:A:380:LEU:O	5:A:384:ILE:N	2.37	0.55
5:A:389:VAL:HG13	5:A:391:SER:CB	2.31	0.55
5:A:331:ILE:HD12	5:A:393:ALA:CB	2.34	0.55
5:A:386:PRO:CB	6:B:15:ARG:CD	2.77	0.55
5:A:365:GLY:O	5:A:366:ILE:CG2	2.54	0.55
6:B:32:GLU:O	6:B:35:ALA:N	2.37	0.55

Continued on next page...

Continued from previous page...

Atom-1	Atom-2	Interatomic distance (Å)	Clash overlap (Å)
1:D:91:A:H1'	1:D:92:U:C6	2.41	0.55
5:A:375:TYR:CD1	5:A:375:TYR:O	2.60	0.55
5:A:331:ILE:CD1	5:A:392:SER:O	2.55	0.55
5:A:38:PHE:CD1	6:B:54:ILE:HG21	2.42	0.55
5:A:98:LEU:O	5:A:100:ILE:O	2.24	0.55
5:A:264:ILE:HG23	5:A:265:PRO:CD	2.36	0.55
6:B:60:TYR:O	6:B:64:ILE:CG2	2.55	0.55
5:A:146:GLN:HE21	7:C:44:GLU:HG2	1.72	0.54
5:A:38:PHE:CG	6:B:54:ILE:HG21	2.43	0.54
1:D:99:U:O2	1:D:99:U:O4'	2.26	0.54
5:A:13:GLU:CG	5:A:14:VAL:H	2.15	0.54
5:A:63:THR:HG23	5:A:76:GLY:CA	2.38	0.54
5:A:355:ARG:CZ	5:A:442:LYS:O	2.55	0.54
4:G:1547:C:H2'	4:G:1548:A:C8	2.43	0.54
5:A:112:LYS:O	5:A:116:ILE:HD12	2.07	0.54
5:A:176:ALA:CB	6:B:47:LEU:HD11	2.36	0.54
5:A:75:ILE:HD11	5:A:173:PHE:CD1	2.43	0.54
5:A:83:ILE:HG23	5:A:337:PHE:CE2	2.43	0.54
5:A:315:SER:HB3	5:A:404:PHE:O	2.07	0.54
5:A:4:LEU:C	5:A:6:PRO:HD2	2.28	0.54
5:A:142:LEU:O	5:A:145:ILE:HB	2.08	0.54
6:B:23:TRP:NE1	6:B:27:LYS:HB3	2.20	0.54
6:B:25:THR:HG22	6:B:28:PRO:O	2.08	0.54
5:A:149:PHE:HB3	7:C:40:PHE:CZ	2.43	0.54
5:A:389:VAL:HG12	5:A:391:SER:OG	2.03	0.54
6:B:26:ARG:C	6:B:28:PRO:C	2.67	0.54
5:A:206:ASN:OD1	5:A:208:GLU:HB2	2.07	0.54
5:A:342:VAL:O	5:A:344:THR:N	2.41	0.54
6:B:46:LEU:C	6:B:49:ILE:HG22	2.28	0.54
1:D:100:U:H1'	1:D:101:A:N1	2.23	0.53
1:D:84:A:H4'	1:D:85:G:O5'	2.08	0.53
1:D:92:U:O2'	5:A:245:ARG:HA	2.09	0.53
5:A:280:GLY:HA3	5:A:294:TYR:OH	2.07	0.53
5:A:311:TYR:HD1	5:A:312:GLY:N	2.05	0.53
5:A:18:VAL:HG12	5:A:18:VAL:O	2.08	0.53
5:A:300:VAL:HG12	5:A:300:VAL:O	2.07	0.53
6:B:58:ALA:C	6:B:60:TYR:N	2.60	0.53
5:A:149:PHE:HB3	7:C:40:PHE:CE2	2.43	0.53
5:A:256:LEU:CD1	5:A:256:LEU:C	2.76	0.53
5:A:391:SER:C	5:A:393:ALA:H	2.12	0.53
5:A:415:LEU:HD23	5:A:415:LEU:C	2.29	0.53

Continued on next page...

Continued from previous page...

Atom-1	Atom-2	Interatomic distance (Å)	Clash overlap (Å)
6:B:41:ALA:HA	6:B:44:ILE:HG22	1.90	0.53
5:A:255:PRO:O	5:A:256:LEU:HB3	2.08	0.53
5:A:152:ILE:HD13	5:A:155:ILE:CD1	2.38	0.53
5:A:239:LYS:CA	5:A:239:LYS:CE	2.71	0.53
5:A:155:ILE:O	5:A:159:GLU:HG2	2.09	0.53
6:B:53:ILE:HG23	6:B:54:ILE:N	2.24	0.53
2:E:493:G:H2'	2:E:494:G:O4'	2.09	0.52
3:F:1400:U:H2'	3:F:1401:G:C8	2.43	0.52
4:G:1547:C:H2'	4:G:1548:A:H8	1.74	0.52
5:A:239:LYS:HE2	5:A:249:ALA:CB	2.38	0.52
5:A:92:GLY:O	5:A:94:ILE:N	2.42	0.52
5:A:228:CYS:SG	6:B:33:TYR:HB2	2.50	0.52
5:A:386:PRO:HB2	6:B:15:ARG:HD2	1.89	0.52
5:A:23:PHE:HD1	5:A:431:GLU:HB3	1.72	0.52
5:A:113:LEU:O	5:A:116:ILE:N	2.43	0.52
3:F:1400:U:H2'	3:F:1401:G:H8	1.73	0.52
4:G:1545:A:H2'	4:G:1546:G:O4'	2.09	0.52
5:A:238:ALA:O	5:A:239:LYS:CD	2.58	0.52
5:A:342:VAL:C	5:A:344:THR:N	2.63	0.52
5:A:398:LEU:HD23	5:A:415:LEU:HD12	1.91	0.52
6:B:46:LEU:HA	6:B:49:ILE:HG22	1.92	0.52
6:B:50:ILE:O	6:B:53:ILE:CG2	2.58	0.52
5:A:72:THR:HB	5:A:147:ILE:HD12	1.92	0.52
5:A:240:ARG:HA	5:A:366:ILE:CD1	2.40	0.52
5:A:294:TYR:CE2	5:A:299:ALA:HB2	2.44	0.52
6:B:18:VAL:HG13	6:B:19:ARG:N	2.24	0.52
5:A:263:ASN:ND2	5:A:423:ARG:HH11	2.07	0.52
3:F:1386:C:H5''	3:F:1396:U:O2	2.09	0.52
5:A:172:LEU:C	5:A:172:LEU:HD23	2.30	0.52
5:A:242:GLN:C	5:A:247:TYR:HB3	2.30	0.52
5:A:390:MET:C	5:A:394:PHE:CB	2.75	0.52
5:A:108:GLN:O	5:A:109:GLY:C	2.47	0.52
5:A:237:TYR:O	5:A:250:GLN:NE2	2.42	0.52
5:A:242:GLN:HB2	5:A:247:TYR:HD2	1.66	0.52
5:A:357:LYS:HD2	5:A:374:LYS:CA	2.38	0.52
5:A:5:ILE:HG22	5:A:9:GLU:OE1	2.10	0.51
5:A:261:VAL:HG11	5:A:388:THR:CB	2.39	0.51
6:B:61:ILE:HG23	6:B:62:LYS:N	2.25	0.51
5:A:164:TYR:CZ	7:C:30:PRO:HG2	2.46	0.51
5:A:166:ILE:HG22	5:A:167:GLY:N	2.25	0.51
5:A:399:ALA:O	5:A:402:ALA:HB3	2.09	0.51

Continued on next page...

Continued from previous page...

Atom-1	Atom-2	Interatomic distance (Å)	Clash overlap (Å)
3:F:1399:C:O2'	3:F:1400:U:H5'	2.10	0.51
5:A:294:TYR:HB3	5:A:298:ARG:O	2.09	0.51
4:G:1535:A:H3'	4:G:1536:C:C6	2.45	0.51
5:A:260:TYR:CD2	5:A:261:VAL:N	2.78	0.51
5:A:427:GLN:O	5:A:431:GLU:HG2	2.11	0.51
6:B:36:VAL:HG13	6:B:37:ALA:H	1.74	0.51
2:E:480:A:H3'	2:E:481:G:C5'	2.40	0.51
5:A:24:LYS:O	5:A:28:LYS:HG3	2.11	0.51
5:A:317:ILE:O	5:A:319:ASP:N	2.38	0.51
6:B:29:THR:OG1	6:B:32:GLU:HB3	2.09	0.51
2:E:480:A:N3	2:E:480:A:H2'	2.25	0.51
5:A:206:ASN:HB3	5:A:209:TYR:HD1	1.74	0.51
5:A:321:ILE:O	5:A:325:VAL:HG23	2.11	0.51
5:A:389:VAL:CG1	5:A:391:SER:OG	2.58	0.51
6:B:32:GLU:O	6:B:35:ALA:HB3	2.10	0.51
5:A:389:VAL:CB	5:A:391:SER:HB3	2.34	0.51
4:G:1537:G:C6	4:G:1538:G:H1'	2.45	0.51
4:G:1541:C:H2'	4:G:1542:U:O4'	2.11	0.51
5:A:21:ILE:HD12	5:A:21:ILE:H	1.76	0.51
5:A:88:LEU:C	5:A:90:GLY:N	2.63	0.51
5:A:300:VAL:O	5:A:301:ASP:HB2	2.11	0.51
5:A:360:GLY:CA	5:A:370:GLU:CD	2.54	0.51
5:A:98:LEU:O	5:A:100:ILE:N	2.43	0.51
5:A:412:THR:O	5:A:415:LEU:HB3	2.11	0.51
5:A:439:ALA:O	5:A:441:ALA:N	2.39	0.51
6:B:29:THR:C	6:B:31:ASP:H	2.13	0.51
4:G:1540:G:H2'	4:G:1541:C:C6	2.46	0.50
5:A:335:VAL:HG23	5:A:392:SER:HB2	1.87	0.50
3:F:1394:U:O2'	3:F:1395:A:H5'	2.10	0.50
5:A:189:PRO:HG3	6:B:56:VAL:HG23	1.93	0.50
5:A:228:CYS:SG	6:B:33:TYR:N	2.84	0.50
5:A:365:GLY:O	5:A:366:ILE:CD1	2.60	0.50
6:B:23:TRP:HE1	6:B:27:LYS:HB2	1.76	0.50
5:A:172:LEU:C	5:A:172:LEU:CD2	2.80	0.50
5:A:281:LEU:HD13	5:A:281:LEU:C	2.32	0.50
5:A:377:GLU:O	5:A:379:ARG:N	2.44	0.50
5:A:435:GLU:O	5:A:435:GLU:HG3	2.12	0.50
7:C:22:THR:HG22	7:C:24:SER:H	1.76	0.50
5:A:224:VAL:O	5:A:226:ALA:O	2.30	0.50
5:A:242:GLN:OE1	5:A:247:TYR:CE2	2.65	0.50
5:A:136:THR:HG22	5:A:139:LEU:H	1.76	0.50

Continued on next page...

Continued from previous page...

Atom-1	Atom-2	Interatomic distance (Å)	Clash overlap (Å)
6:B:46:LEU:CA	6:B:49:ILE:HG22	2.42	0.50
5:A:348:ASP:O	5:A:352:MET:HG3	2.12	0.50
6:B:25:THR:CG2	6:B:29:THR:HG22	2.39	0.50
5:A:373:ALA:O	5:A:374:LYS:HB2	2.11	0.50
5:A:395:VAL:HG12	5:A:396:GLY:N	2.26	0.50
1:D:104:A:H2'	1:D:105:C:C6	2.47	0.49
5:A:75:ILE:HG21	5:A:170:ILE:HG23	1.93	0.49
5:A:80:THR:HG23	5:A:275:ASN:HD21	1.76	0.49
5:A:116:ILE:HD12	5:A:116:ILE:N	2.26	0.49
5:A:240:ARG:CD	5:A:361:ALA:HB2	2.42	0.49
5:A:306:TYR:O	5:A:307:LEU:HD23	2.12	0.49
5:A:355:ARG:NE	5:A:442:LYS:O	2.45	0.49
5:A:370:GLU:O	5:A:372:THR:N	2.45	0.49
6:B:5:LYS:HA	6:B:8:VAL:CG1	2.42	0.49
5:A:82:GLY:O	5:A:86:GLN:HG2	2.11	0.49
5:A:89:VAL:HG12	5:A:89:VAL:O	2.12	0.49
5:A:29:TRP:CE2	5:A:164:TYR:HD2	2.31	0.49
5:A:89:VAL:HG21	5:A:107:PHE:CD1	2.47	0.49
5:A:102:GLU:C	5:A:106:LEU:HG	2.31	0.49
5:A:160:ILE:HD11	7:C:33:VAL:CG2	2.43	0.49
5:A:239:LYS:O	5:A:249:ALA:HB2	2.08	0.49
5:A:391:SER:O	5:A:394:PHE:N	2.45	0.49
7:C:30:PRO:HA	7:C:33:VAL:CG2	2.42	0.49
7:C:34:ILE:O	7:C:38:VAL:HG23	2.13	0.49
4:G:1533:C:H2'	4:G:1534:U:O4'	2.12	0.49
5:A:247:TYR:O	5:A:248:ALA:O	2.30	0.49
5:A:376:ILE:HG22	5:A:376:ILE:O	2.11	0.49
5:A:381:LYS:O	5:A:385:PRO:CG	2.60	0.49
6:B:5:LYS:HA	6:B:8:VAL:HG12	1.94	0.49
6:B:32:GLU:O	6:B:33:TYR:C	2.50	0.49
5:A:43:ILE:HG22	5:A:70:LEU:HD11	1.93	0.49
7:C:35:GLY:HA2	7:C:38:VAL:HG23	1.94	0.49
5:A:358:LYS:O	5:A:360:GLY:N	2.45	0.49
5:A:384:ILE:N	5:A:385:PRO:CD	2.75	0.49
6:B:54:ILE:O	6:B:57:PRO:HG2	2.12	0.49
5:A:34:LEU:HD21	6:B:50:ILE:HG21	1.94	0.49
5:A:229:MET:O	5:A:230:ARG:O	2.30	0.49
5:A:240:ARG:HG3	5:A:366:ILE:HD11	1.93	0.49
6:B:26:ARG:CA	6:B:27:LYS:HD3	2.35	0.49
5:A:118:MET:O	5:A:122:GLU:HG2	2.13	0.49
5:A:321:ILE:HD12	5:A:322:HIS:N	2.19	0.49

Continued on next page...

Continued from previous page...

Atom-1	Atom-2	Interatomic distance (Å)	Clash overlap (Å)
5:A:350:LYS:O	5:A:351:SER:OG	2.30	0.49
5:A:15:GLU:O	5:A:17:PRO:HD3	2.12	0.49
5:A:179:SER:HB3	6:B:48:GLY:N	2.28	0.48
5:A:429:LEU:C	5:A:431:GLU:N	2.65	0.48
2:E:490:C:H42	5:A:358:LYS:HZ2	1.55	0.48
5:A:244:ARG:CA	5:A:247:TYR:CE1	2.95	0.48
5:A:253:HIS:O	5:A:254:LEU:CD2	2.59	0.48
5:A:350:LYS:O	5:A:351:SER:HB2	2.13	0.48
5:A:34:LEU:HD23	6:B:50:ILE:HD12	1.94	0.48
5:A:75:ILE:HD11	5:A:173:PHE:HD1	1.78	0.48
5:A:360:GLY:HA3	5:A:370:GLU:OE1	2.10	0.48
5:A:367:ARG:N	5:A:368:PRO:HD3	2.26	0.48
5:A:46:TYR:CB	5:A:146:GLN:HE22	2.19	0.48
5:A:263:ASN:HD22	5:A:423:ARG:HH11	1.60	0.48
6:B:25:THR:HG22	6:B:26:ARG:N	2.28	0.48
1:D:100:U:H1'	1:D:101:A:C2	2.49	0.48
5:A:75:ILE:O	5:A:79:VAL:HG23	2.13	0.48
5:A:92:GLY:O	5:A:95:GLN:HG3	2.14	0.48
5:A:381:LYS:C	5:A:385:PRO:HD3	2.28	0.48
5:A:67:ILE:HG23	5:A:72:THR:HG23	1.94	0.48
5:A:261:VAL:HB	5:A:388:THR:HB	1.95	0.48
1:D:104:A:H2'	1:D:105:C:H6	1.78	0.48
5:A:179:SER:HB3	6:B:48:GLY:CA	2.44	0.48
5:A:181:THR:HG21	5:A:409:GLY:HA2	1.96	0.48
5:A:167:GLY:HA2	5:A:427:GLN:CD	2.34	0.48
6:B:51:GLY:O	6:B:55:HIS:HB2	2.12	0.48
5:A:238:ALA:HA	5:A:370:GLU:OE2	2.14	0.48
5:A:313:LEU:N	5:A:313:LEU:HD12	2.29	0.48
5:A:34:LEU:HD13	5:A:172:LEU:HD21	1.96	0.47
5:A:136:THR:O	5:A:138:LEU:N	2.47	0.47
5:A:234:VAL:HG11	5:A:235:VAL:CG2	2.37	0.47
5:A:94:ILE:O	5:A:94:ILE:HG22	2.14	0.47
5:A:124:VAL:HA	5:A:144:ILE:CD1	2.44	0.47
5:A:194:TRP:O	5:A:195:LYS:C	2.52	0.47
5:A:240:ARG:HG2	5:A:366:ILE:HD13	1.94	0.47
5:A:250:GLN:O	5:A:251:SER:HB3	2.14	0.47
5:A:354:LYS:C	5:A:355:ARG:HG3	2.35	0.47
5:A:375:TYR:O	5:A:375:TYR:CG	2.66	0.47
6:B:26:ARG:CB	6:B:28:PRO:O	2.60	0.47
5:A:179:SER:OG	6:B:44:ILE:HG13	2.15	0.47
5:A:261:VAL:C	5:A:263:ASN:N	2.67	0.47

Continued on next page...

Continued from previous page...

Atom-1	Atom-2	Interatomic distance (Å)	Clash overlap (Å)
5:A:309:THR:HG21	5:A:403:ASN:OD1	2.14	0.47
5:A:118:MET:O	5:A:122:GLU:CG	2.63	0.47
5:A:153:ILE:HG21	7:C:37:THR:HG23	1.96	0.47
5:A:330:MET:O	5:A:331:ILE:C	2.52	0.47
5:A:386:PRO:HB3	6:B:15:ARG:CZ	2.40	0.47
6:B:26:ARG:CG	6:B:30:LYS:H	1.91	0.47
5:A:14:VAL:HG21	5:A:159:GLU:HB3	1.95	0.47
5:A:301:ASP:N	5:A:305:TYR:HB2	2.29	0.47
5:A:398:LEU:HD23	5:A:415:LEU:HD11	1.96	0.47
6:B:26:ARG:CD	6:B:27:LYS:HZ1	2.26	0.47
5:A:227:GLU:HB2	6:B:36:VAL:HG21	1.95	0.47
6:B:56:VAL:O	6:B:59:THR:N	2.47	0.47
5:A:67:ILE:CA	5:A:72:THR:HG23	2.34	0.47
5:A:86:GLN:O	5:A:90:GLY:HA3	2.13	0.47
5:A:228:CYS:HG	6:B:28:PRO:CG	2.26	0.47
5:A:231:ARG:HG3	6:B:22:ILE:CD1	2.40	0.47
5:A:234:VAL:CG1	5:A:235:VAL:CG2	2.92	0.47
5:A:261:VAL:HB	5:A:388:THR:CB	2.45	0.47
5:A:294:TYR:CD2	5:A:299:ALA:HB2	2.50	0.47
6:B:5:LYS:O	6:B:8:VAL:HG13	2.15	0.47
2:E:479:A:O2'	2:E:481:G:H5'	2.15	0.47
3:F:1402:U:H5'	4:G:1521:G:HO2'	1.76	0.47
5:A:74:GLY:O	5:A:77:PRO:HD2	2.14	0.47
5:A:166:ILE:CD1	5:A:428:LEU:HD21	2.45	0.47
5:A:214:ILE:O	5:A:215:GLY:C	2.52	0.47
5:A:238:ALA:CA	5:A:370:GLU:OE2	2.62	0.47
5:A:318:SER:O	5:A:319:ASP:CG	2.53	0.47
5:A:341:TRP:O	5:A:344:THR:HG23	2.15	0.47
6:B:55:HIS:O	6:B:57:PRO:N	2.47	0.47
5:A:135:LEU:HD12	5:A:135:LEU:N	2.30	0.47
5:A:171:GLY:HA3	5:A:423:ARG:HH21	1.80	0.47
5:A:172:LEU:CD2	5:A:176:ALA:HB2	2.45	0.47
6:B:5:LYS:CA	6:B:8:VAL:HG12	2.45	0.47
1:D:102:U:H4'	1:D:103:A:OP1	2.15	0.47
5:A:84:ILE:O	5:A:87:LEU:N	2.47	0.47
3:F:1401:G:H2'	3:F:1402:U:C6	2.49	0.46
5:A:123:ALA:HB2	5:A:148:ALA:HB2	1.96	0.46
5:A:344:THR:CG2	5:A:345:THR:N	2.50	0.46
5:A:98:LEU:HD23	5:A:103:ASN:HB3	1.96	0.46
5:A:234:VAL:CG2	5:A:235:VAL:HB	2.40	0.46
5:A:410:GLY:O	5:A:411:GLY:C	2.53	0.46

Continued on next page...

Continued from previous page...

Atom-1	Atom-2	Interatomic distance (Å)	Clash overlap (Å)
5:A:427:GLN:HE21	5:A:427:GLN:HB2	1.53	0.46
6:B:26:ARG:CA	6:B:28:PRO:O	2.64	0.46
6:B:66:LYS:O	6:B:66:LYS:HG2	2.15	0.46
5:A:12:PRO:HB3	7:C:28:VAL:CG2	2.45	0.46
5:A:366:ILE:CG1	5:A:368:PRO:HG3	2.45	0.46
5:A:391:SER:O	5:A:392:SER:C	2.52	0.46
1:D:100:U:H1'	1:D:101:A:C6	2.50	0.46
2:E:488:G:H1'	2:E:492:A:N6	2.30	0.46
5:A:231:ARG:HG2	5:A:233:ILE:HD11	1.89	0.46
5:A:244:ARG:O	5:A:245:ARG:CB	2.62	0.46
5:A:311:TYR:CD1	5:A:312:GLY:N	2.84	0.46
5:A:112:LYS:HD3	5:A:116:ILE:HD11	1.98	0.46
5:A:79:VAL:HG11	5:A:271:ALA:CB	2.45	0.46
5:A:120:PHE:O	5:A:123:ALA:HB3	2.15	0.46
5:A:228:CYS:O	6:B:32:GLU:OE2	2.33	0.46
7:C:49:TYR:CD1	7:C:49:TYR:N	2.83	0.46
4:G:1536:C:H1'	4:G:1537:G:H22	1.81	0.46
5:A:23:PHE:CE1	5:A:431:GLU:HB2	2.48	0.46
5:A:273:PHE:HD1	5:A:273:PHE:H	1.62	0.46
5:A:321:ILE:CD1	5:A:322:HIS:H	2.21	0.46
5:A:389:VAL:CG2	5:A:390:MET:HB3	2.40	0.46
6:B:27:LYS:CD	6:B:27:LYS:N	2.70	0.46
5:A:129:ALA:O	5:A:285:ARG:HD3	2.15	0.46
5:A:124:VAL:CG2	5:A:144:ILE:HD13	2.36	0.46
5:A:153:ILE:HD11	7:C:40:PHE:CD1	2.50	0.46
5:A:153:ILE:CD1	7:C:37:THR:HG23	2.40	0.46
5:A:240:ARG:C	5:A:241:GLN:HG3	2.35	0.46
5:A:340:PHE:CD1	5:A:340:PHE:N	2.84	0.46
5:A:357:LYS:CD	5:A:374:LYS:HA	2.42	0.46
5:A:8:LEU:HD23	5:A:8:LEU:C	2.36	0.45
5:A:38:PHE:CE1	6:B:51:GLY:N	2.84	0.45
5:A:240:ARG:O	5:A:241:GLN:HG2	2.16	0.45
5:A:241:GLN:CG	5:A:242:GLN:O	2.65	0.45
5:A:386:PRO:O	5:A:389:VAL:CG2	2.47	0.45
5:A:386:PRO:CA	6:B:15:ARG:NH1	2.78	0.45
5:A:195:LYS:HB3	5:A:209:TYR:CE2	2.50	0.45
5:A:380:LEU:C	5:A:384:ILE:CG1	2.84	0.45
5:A:3:LYS:O	5:A:5:ILE:N	2.47	0.45
5:A:176:ALA:HA	6:B:47:LEU:HG	1.94	0.45
5:A:344:THR:O	5:A:345:THR:OG1	2.30	0.45
5:A:14:VAL:HG13	7:C:30:PRO:HG3	1.98	0.45

Continued on next page...

Continued from previous page...

Atom-1	Atom-2	Interatomic distance (Å)	Clash overlap (Å)
5:A:45:VAL:HG11	5:A:147:ILE:HD11	1.98	0.45
5:A:260:TYR:CE1	5:A:423:ARG:CB	3.00	0.45
5:A:264:ILE:HG21	5:A:341:TRP:CH2	2.51	0.45
6:B:45:SER:O	6:B:49:ILE:HG22	2.15	0.45
5:A:234:VAL:CG1	5:A:252:THR:O	2.65	0.45
5:A:240:ARG:N	5:A:366:ILE:HD12	2.32	0.45
7:C:30:PRO:O	7:C:33:VAL:HG23	2.17	0.45
5:A:319:ASP:N	5:A:320:PRO:HD3	2.32	0.45
6:B:36:VAL:O	6:B:40:THR:CG2	2.58	0.45
5:A:254:LEU:HB2	5:A:255:PRO:HA	1.81	0.45
5:A:117:ILE:O	5:A:121:VAL:HG23	2.17	0.45
5:A:129:ALA:C	5:A:285:ARG:HD3	2.37	0.45
5:A:170:ILE:O	5:A:171:GLY:C	2.56	0.45
5:A:369:GLY:O	5:A:370:GLU:HB2	2.17	0.45
5:A:402:ALA:O	5:A:405:ILE:CG2	2.65	0.45
5:A:11:ILE:CD1	5:A:113:LEU:HD23	2.32	0.45
5:A:157:LEU:HD23	5:A:160:ILE:CD1	2.35	0.44
5:A:228:CYS:SG	6:B:33:TYR:CB	3.05	0.44
5:A:377:GLU:C	5:A:379:ARG:N	2.70	0.44
1:D:92:U:H3'	1:D:93:G:H8	1.82	0.44
5:A:77:PRO:O	5:A:80:THR:N	2.50	0.44
5:A:136:THR:O	5:A:137:PRO:C	2.54	0.44
5:A:169:GLY:O	5:A:170:ILE:C	2.56	0.44
5:A:194:TRP:O	5:A:197:LEU:N	2.50	0.44
5:A:388:THR:OG1	5:A:389:VAL:N	2.49	0.44
5:A:414:VAL:O	5:A:418:VAL:HG23	2.17	0.44
5:A:91:SER:C	5:A:93:ILE:H	2.20	0.44
6:B:46:LEU:HA	6:B:49:ILE:CG2	2.47	0.44
6:B:47:LEU:C	6:B:50:ILE:HG22	2.38	0.44
5:A:63:THR:HG22	5:A:63:THR:O	2.16	0.44
5:A:149:PHE:CD2	7:C:40:PHE:HZ	2.31	0.44
5:A:257:LYS:CG	5:A:258:VAL:N	2.53	0.44
5:A:346:GLY:O	5:A:347:LEU:C	2.56	0.44
7:C:30:PRO:HA	7:C:33:VAL:HG22	2.00	0.44
5:A:13:GLU:O	7:C:28:VAL:HB	2.18	0.44
5:A:242:GLN:N	5:A:247:TYR:CB	2.31	0.44
5:A:319:ASP:O	5:A:320:PRO:C	2.56	0.44
5:A:87:LEU:HD21	5:A:336:MET:HE1	2.00	0.44
5:A:130:GLY:HA3	5:A:285:ARG:NH1	2.33	0.44
5:A:216:THR:OG1	5:A:408:LEU:HB3	2.18	0.44
5:A:311:TYR:CD1	5:A:311:TYR:C	2.91	0.44

Continued on next page...

Continued from previous page...

Atom-1	Atom-2	Interatomic distance (Å)	Clash overlap (Å)
6:B:13:GLU:O	6:B:16:THR:OG1	2.30	0.44
6:B:23:TRP:CZ2	6:B:27:LYS:CB	2.98	0.44
6:B:41:ALA:O	6:B:44:ILE:CG2	2.66	0.44
1:D:83:A:H2'	1:D:84:A:N7	2.33	0.43
5:A:38:PHE:CZ	6:B:50:ILE:HG23	2.40	0.43
5:A:172:LEU:O	5:A:175:ALA:N	2.50	0.43
5:A:235:VAL:O	5:A:236:ASN:OD1	2.36	0.43
6:B:65:LEU:O	6:B:65:LEU:HG	2.18	0.43
5:A:194:TRP:O	5:A:196:PHE:N	2.51	0.43
5:A:346:GLY:O	5:A:348:ASP:N	2.50	0.43
6:B:33:TYR:O	6:B:36:VAL:CG1	2.51	0.43
6:B:54:ILE:HG23	6:B:55:HIS:N	2.33	0.43
5:A:358:LYS:O	5:A:359:SER:C	2.57	0.43
5:A:415:LEU:CD2	5:A:416:LEU:N	2.81	0.43
6:B:8:VAL:HG13	6:B:9:ALA:N	2.33	0.43
5:A:261:VAL:HG22	5:A:347:LEU:CD1	2.32	0.43
6:B:50:ILE:HG23	6:B:51:GLY:N	2.33	0.43
5:A:228:CYS:SG	6:B:32:GLU:HG2	2.58	0.43
5:A:284:TYR:C	5:A:286:MET:H	2.22	0.43
5:A:361:ALA:O	5:A:362:PHE:HB3	2.19	0.43
5:A:379:ARG:HD2	5:A:383:TYR:CE2	2.54	0.43
6:B:39:VAL:HG13	6:B:40:THR:N	2.34	0.43
5:A:163:LYS:O	5:A:164:TYR:CD1	2.72	0.43
5:A:171:GLY:HA2	5:A:420:ILE:HD13	2.00	0.43
5:A:240:ARG:HA	5:A:366:ILE:HD12	2.00	0.43
5:A:258:VAL:O	5:A:258:VAL:HG13	2.19	0.43
5:A:261:VAL:HG21	5:A:347:LEU:CD1	2.34	0.43
5:A:385:PRO:CB	5:A:386:PRO:CD	2.59	0.43
6:B:25:THR:CG2	6:B:29:THR:CG2	2.96	0.43
5:A:38:PHE:CD1	6:B:51:GLY:HA2	2.54	0.43
5:A:240:ARG:CA	5:A:366:ILE:HD12	2.49	0.43
5:A:336:MET:O	5:A:339:ILE:N	2.52	0.43
5:A:389:VAL:CA	5:A:391:SER:HB3	2.48	0.43
5:A:14:VAL:CG1	7:C:30:PRO:HG3	2.48	0.43
5:A:23:PHE:CE1	5:A:431:GLU:CB	3.02	0.43
5:A:46:TYR:HB3	5:A:146:GLN:NE2	2.20	0.43
5:A:170:ILE:H	5:A:170:ILE:HG13	1.48	0.43
5:A:244:ARG:C	5:A:247:TYR:CD1	2.92	0.43
5:A:266:VAL:CG1	5:A:416:LEU:HD21	2.48	0.43
5:A:386:PRO:CB	6:B:15:ARG:HH11	2.05	0.43
4:G:1533:C:H2'	4:G:1534:U:C6	2.54	0.42

Continued on next page...

Continued from previous page...

Atom-1	Atom-2	Interatomic distance (Å)	Clash overlap (Å)
5:A:79:VAL:HG11	5:A:271:ALA:HB2	2.01	0.42
5:A:98:LEU:CA	5:A:103:ASN:HB2	2.34	0.42
3:F:1400:U:O2'	3:F:1401:G:H5'	2.18	0.42
5:A:29:TRP:O	5:A:30:THR:C	2.57	0.42
5:A:171:GLY:O	5:A:420:ILE:HG21	2.19	0.42
5:A:228:CYS:HG	6:B:28:PRO:HG3	1.77	0.42
6:B:22:ILE:O	6:B:22:ILE:CG2	2.67	0.42
1:D:97:C:H2'	1:D:98:G:O4'	2.18	0.42
5:A:188:GLY:HA2	6:B:52:TYR:CE1	2.41	0.42
5:A:194:TRP:C	5:A:196:PHE:N	2.71	0.42
2:E:497:A:H2'	2:E:498:G:C8	2.54	0.42
5:A:143:VAL:O	5:A:144:ILE:C	2.56	0.42
5:A:166:ILE:HD13	5:A:428:LEU:HD23	1.97	0.42
5:A:76:GLY:O	5:A:80:THR:OG1	2.35	0.42
5:A:342:VAL:O	5:A:343:GLU:C	2.57	0.42
5:A:124:VAL:HA	5:A:144:ILE:HD11	2.02	0.42
3:F:1397:U:H5''	3:F:1398:C:H5	1.84	0.42
3:F:1401:G:H2'	3:F:1402:U:O4'	2.19	0.42
5:A:98:LEU:HD22	5:A:104:ARG:HA	2.02	0.42
5:A:329:ALA:O	5:A:332:ILE:HG12	2.20	0.42
6:B:31:ASP:OD1	6:B:31:ASP:O	2.37	0.42
5:A:33:VAL:HG11	5:A:161:VAL:CG2	2.50	0.42
5:A:149:PHE:O	5:A:152:ILE:HB	2.20	0.42
5:A:173:PHE:O	5:A:176:ALA:HB3	2.20	0.42
5:A:261:VAL:CG1	5:A:388:THR:HB	2.50	0.42
5:A:63:THR:CG2	5:A:76:GLY:H	2.25	0.42
5:A:79:VAL:O	5:A:80:THR:C	2.58	0.42
5:A:211:ALA:HB3	5:A:212:PRO:HD3	2.02	0.42
5:A:216:THR:HA	5:A:407:ALA:HB1	2.02	0.42
5:A:277:GLN:HE21	5:A:308:SER:HB3	1.83	0.42
4:G:1535:A:H3'	4:G:1536:C:C5	2.55	0.41
5:A:260:TYR:CE1	5:A:423:ARG:HB3	2.54	0.41
5:A:331:ILE:HG23	5:A:393:ALA:HB2	2.02	0.41
6:B:29:THR:C	6:B:31:ASP:N	2.74	0.41
6:B:32:GLU:O	6:B:35:ALA:CB	2.68	0.41
6:B:58:ALA:C	6:B:61:ILE:HG22	2.40	0.41
2:E:490:C:H4'	2:E:490:C:OP2	2.20	0.41
5:A:31:GLY:O	5:A:35:VAL:HG23	2.20	0.41
5:A:49:GLY:C	5:A:51:GLN:H	2.22	0.41
5:A:67:ILE:HG23	5:A:72:THR:CG2	2.50	0.41
5:A:84:ILE:CD1	5:A:114:LEU:HD21	2.24	0.41

Continued on next page...

Continued from previous page...

Atom-1	Atom-2	Interatomic distance (Å)	Clash overlap (Å)
5:A:380:LEU:O	5:A:382:ARG:N	2.53	0.41
6:B:19:ARG:HA	6:B:22:ILE:CG2	2.51	0.41
5:A:34:LEU:HD21	6:B:50:ILE:CD1	2.33	0.41
5:A:243:GLY:CA	5:A:247:TYR:HB2	2.45	0.41
5:A:272:LEU:HD22	5:A:272:LEU:HA	1.84	0.41
5:A:341:TRP:O	5:A:345:THR:O	2.39	0.41
5:A:370:GLU:O	5:A:371:GLN:C	2.57	0.41
5:A:85:MET:HG3	5:A:111:GLN:HG3	2.01	0.41
5:A:166:ILE:CG2	5:A:427:GLN:HG2	2.50	0.41
5:A:219:VAL:HG13	5:A:223:VAL:CG2	2.51	0.41
5:A:349:PRO:HG2	5:A:381:LYS:HA	2.02	0.41
5:A:433:VAL:C	5:A:435:GLU:N	2.74	0.41
6:B:26:ARG:NE	6:B:27:LYS:HZ1	2.19	0.41
4:G:1542:U:O2'	4:G:1543:G:H5'	2.21	0.41
5:A:5:ILE:N	5:A:6:PRO:CD	2.83	0.41
5:A:100:ILE:C	5:A:102:GLU:N	2.73	0.41
5:A:156:TYR:HB3	7:C:33:VAL:HG11	2.02	0.41
5:A:157:LEU:HD23	5:A:157:LEU:HA	1.95	0.41
5:A:239:LYS:C	5:A:240:ARG:HG3	2.40	0.41
5:A:87:LEU:HD21	5:A:336:MET:CE	2.51	0.41
5:A:193:LEU:HG	5:A:197:LEU:HD22	2.02	0.41
5:A:370:GLU:C	5:A:372:THR:N	2.74	0.41
5:A:69:THR:C	5:A:71:ILE:H	2.22	0.41
7:C:31:GLU:OE2	7:C:31:GLU:N	2.37	0.41
3:F:1394:U:C2'	3:F:1395:A:H5'	2.50	0.41
5:A:85:MET:CE	5:A:111:GLN:HB2	2.49	0.41
5:A:386:PRO:C	6:B:15:ARG:NH1	2.74	0.41
7:C:43:ILE:O	7:C:47:LEU:N	2.44	0.41
5:A:26:LYS:HA	5:A:165:GLY:HA2	2.03	0.41
5:A:116:ILE:HA	5:A:119:CYS:HB2	2.02	0.41
5:A:324:ILE:HG23	5:A:328:ILE:HD11	2.03	0.41
2:E:497:A:H2'	2:E:498:G:H8	1.87	0.40
5:A:92:GLY:O	5:A:93:ILE:C	2.58	0.40
5:A:35:VAL:O	5:A:36:LEU:C	2.58	0.40
5:A:36:LEU:HD23	5:A:36:LEU:HA	1.92	0.40
5:A:43:ILE:C	5:A:70:LEU:HD13	2.41	0.40
5:A:166:ILE:HG22	5:A:427:GLN:HG2	2.02	0.40
5:A:340:PHE:N	5:A:340:PHE:HD1	2.19	0.40
5:A:357:LYS:CD	5:A:374:LYS:N	2.84	0.40
5:A:360:GLY:O	5:A:361:ALA:HB2	2.21	0.40
5:A:380:LEU:O	5:A:381:LYS:C	2.59	0.40

Continued on next page...

Continued from previous page...

Atom-1	Atom-2	Interatomic distance (Å)	Clash overlap (Å)
6:B:49:ILE:CG2	6:B:50:ILE:N	2.84	0.40
5:A:89:VAL:HG21	5:A:107:PHE:HD1	1.85	0.40
5:A:200:LEU:HD23	5:A:200:LEU:HA	1.89	0.40
5:A:219:VAL:O	5:A:220:PHE:C	2.59	0.40
5:A:357:LYS:HD3	5:A:374:LYS:H	1.86	0.40
5:A:237:TYR:CE2	5:A:239:LYS:CE	3.04	0.40
5:A:243:GLY:N	5:A:247:TYR:CB	2.84	0.40
5:A:342:VAL:C	5:A:344:THR:H	2.25	0.40
5:A:382:ARG:C	5:A:384:ILE:N	2.75	0.40
5:A:386:PRO:CB	6:B:15:ARG:CZ	2.97	0.40
6:B:41:ALA:CA	6:B:44:ILE:HG22	2.52	0.40
6:B:53:ILE:C	6:B:57:PRO:HG3	2.34	0.40
5:A:233:ILE:CD1	5:A:233:ILE:N	2.80	0.40
5:A:325:VAL:O	5:A:326:TYR:C	2.60	0.40
6:B:36:VAL:CG1	6:B:37:ALA:N	2.83	0.40

There are no symmetry-related clashes.

5.3 Torsion angles [i](#)

5.3.1 Protein backbone [i](#)

In the following table, the Percentiles column shows the percent Ramachandran outliers of the chain as a percentile score with respect to all PDB entries followed by that with respect to all EM entries.

The Analysed column shows the number of residues for which the backbone conformation was analysed, and the total number of residues.

Mol	Chain	Analysed	Favoured	Allowed	Outliers	Percentiles	
5	A	440/442 (100%)	233 (53%)	125 (28%)	82 (19%)	0	2
6	B	63/65 (97%)	44 (70%)	9 (14%)	10 (16%)	0	3
7	C	30/32 (94%)	19 (63%)	11 (37%)	0	100	100
All	All	533/539 (99%)	296 (56%)	145 (27%)	92 (17%)	0	3

All (92) Ramachandran outliers are listed below:

Mol	Chain	Res	Type
5	A	66	ARG
5	A	99	SER

Continued on next page...

Continued from previous page...

Mol	Chain	Res	Type
5	A	225	TYR
5	A	230	ARG
5	A	231	ARG
5	A	234	VAL
5	A	240	ARG
5	A	251	SER
5	A	254	LEU
5	A	255	PRO
5	A	256	LEU
5	A	257	LYS
5	A	259	VAL
5	A	260	TYR
5	A	261	VAL
5	A	318	SER
5	A	336	MET
5	A	361	ALA
5	A	363	VAL
5	A	364	PRO
5	A	366	ILE
5	A	370	GLU
5	A	373	ALA
5	A	374	LYS
5	A	385	PRO
5	A	387	LEU
5	A	389	VAL
5	A	391	SER
6	B	24	PRO
6	B	25	THR
6	B	55	HIS
6	B	56	VAL
6	B	57	PRO
6	B	59	THR
5	A	58	PHE
5	A	89	VAL
5	A	93	ILE
5	A	147	ILE
5	A	170	ILE
5	A	172	LEU
5	A	188	GLY
5	A	189	PRO
5	A	226	ALA
5	A	236	ASN

Continued on next page...

Continued from previous page...

Mol	Chain	Res	Type
5	A	245	ARG
5	A	248	ALA
5	A	262	SER
5	A	311	TYR
5	A	343	GLU
5	A	347	LEU
5	A	351	SER
5	A	355	ARG
5	A	359	SER
5	A	362	PHE
5	A	375	TYR
5	A	378	HIS
5	A	388	THR
5	A	392	SER
5	A	394	PHE
5	A	415	LEU
5	A	440	ILE
6	B	23	TRP
6	B	30	LYS
6	B	31	ASP
6	B	32	GLU
5	A	4	LEU
5	A	108	GLN
5	A	145	ILE
5	A	205	PRO
5	A	295	GLU
5	A	331	ILE
5	A	371	GLN
5	A	439	ALA
5	A	173	PHE
5	A	294	TYR
5	A	319	ASP
5	A	102	GLU
5	A	109	GLY
5	A	320	PRO
5	A	6	PRO
5	A	136	THR
5	A	137	PRO
5	A	211	ALA
5	A	235	VAL
5	A	353	ALA
5	A	233	ILE

Continued on next page...

Continued from previous page...

Mol	Chain	Res	Type
5	A	258	VAL
5	A	367	ARG
5	A	77	PRO
5	A	386	PRO
5	A	406	GLY
5	A	12	PRO

5.3.2 Protein sidechains [i](#)

In the following table, the Percentiles column shows the percent sidechain outliers of the chain as a percentile score with respect to all PDB entries followed by that with respect to all EM entries.

The Analysed column shows the number of residues for which the sidechain conformation was analysed, and the total number of residues.

Mol	Chain	Analysed	Rotameric	Outliers	Percentiles	
5	A	362/362 (100%)	335 (92%)	27 (8%)	13	38
6	B	52/52 (100%)	51 (98%)	1 (2%)	57	75
7	C	28/28 (100%)	26 (93%)	2 (7%)	14	39
All	All	442/442 (100%)	412 (93%)	30 (7%)	19	41

All (30) residues with a non-rotameric sidechain are listed below:

Mol	Chain	Res	Type
5	A	3	LYS
5	A	16	LEU
5	A	21	ILE
5	A	27	LEU
5	A	29	TRP
5	A	33	VAL
5	A	62	ILE
5	A	80	THR
5	A	112	LYS
5	A	126	PHE
5	A	135	LEU
5	A	172	LEU
5	A	197	LEU
5	A	202	GLN
5	A	210	ILE
5	A	234	VAL

Continued on next page...

Continued from previous page...

Mol	Chain	Res	Type
5	A	256	LEU
5	A	266	VAL
5	A	272	LEU
5	A	311	TYR
5	A	313	LEU
5	A	321	ILE
5	A	343	GLU
5	A	367	ARG
5	A	389	VAL
5	A	412	THR
5	A	427	GLN
6	B	27	LYS
7	C	33	VAL
7	C	51	ARG

Sometimes sidechains can be flipped to improve hydrogen bonding and reduce clashes. All (7) such sidechains are listed below:

Mol	Chain	Res	Type
5	A	111	GLN
5	A	146	GLN
5	A	242	GLN
5	A	263	ASN
5	A	275	ASN
5	A	403	ASN
5	A	427	GLN

5.3.3 RNA [i](#)

Mol	Chain	Analysed	Backbone Outliers	Pucker Outliers
1	D	26/27 (96%)	7 (26%)	0
2	E	26/27 (96%)	5 (19%)	0
3	F	18/19 (94%)	2 (11%)	0
4	G	31/32 (96%)	4 (12%)	0
All	All	101/105 (96%)	18 (17%)	0

All (18) RNA backbone outliers are listed below:

Mol	Chain	Res	Type
1	D	84	A
1	D	91	A

Continued on next page...

Continued from previous page...

Mol	Chain	Res	Type
1	D	95	A
1	D	98	G
1	D	100	U
1	D	101	A
1	D	102	U
2	E	479	A
2	E	481	G
2	E	490	C
2	E	491	G
2	E	504	A
3	F	1396	U
3	F	1397	U
4	G	1524	G
4	G	1532	A
4	G	1535	A
4	G	1538	G

There are no RNA pucker outliers to report.

5.4 Non-standard residues in protein, DNA, RNA chains [i](#)

There are no non-standard protein/DNA/RNA residues in this entry.

5.5 Carbohydrates [i](#)

There are no monosaccharides in this entry.

5.6 Ligand geometry [i](#)

There are no ligands in this entry.

5.7 Other polymers [i](#)

There are no such residues in this entry.

5.8 Polymer linkage issues [i](#)

There are no chain breaks in this entry.

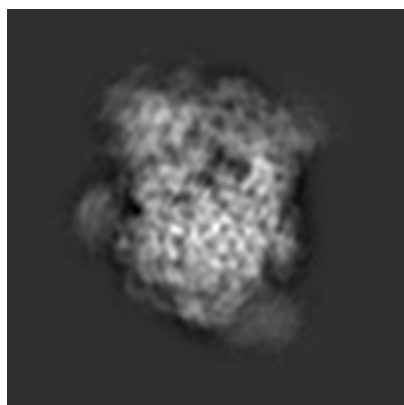
6 Map visualisation [i](#)

This section contains visualisations of the EMDB entry EMD-1484. These allow visual inspection of the internal detail of the map and identification of artifacts.

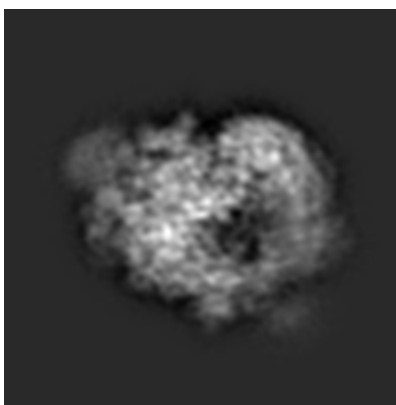
No raw map or half-maps were deposited for this entry and therefore no images, graphs, etc. pertaining to the raw map can be shown.

6.1 Orthogonal projections [i](#)

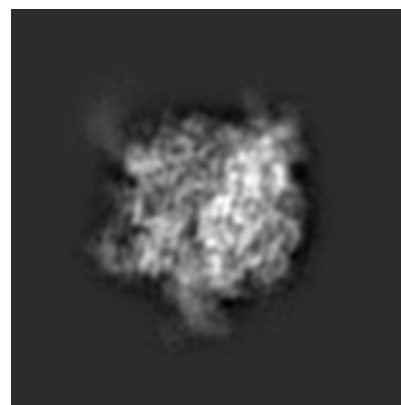
6.1.1 Primary map



X



Y

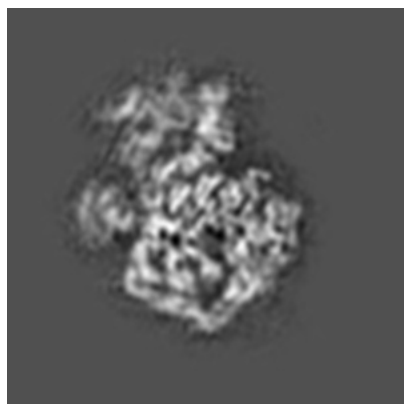


Z

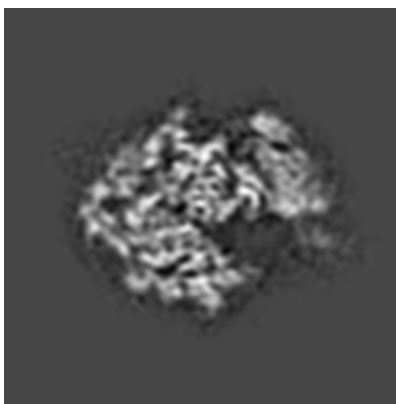
The images above show the map projected in three orthogonal directions.

6.2 Central slices [i](#)

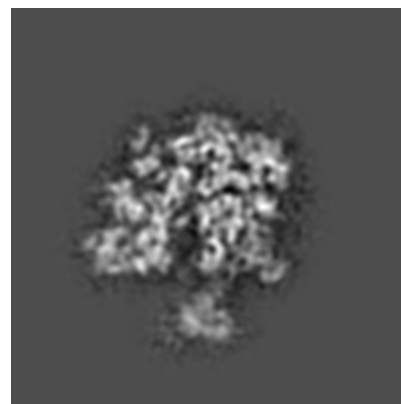
6.2.1 Primary map



X Index: 72



Y Index: 72

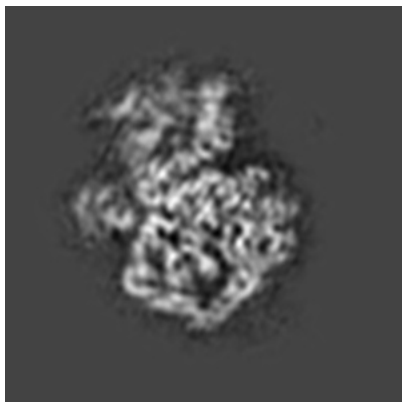


Z Index: 72

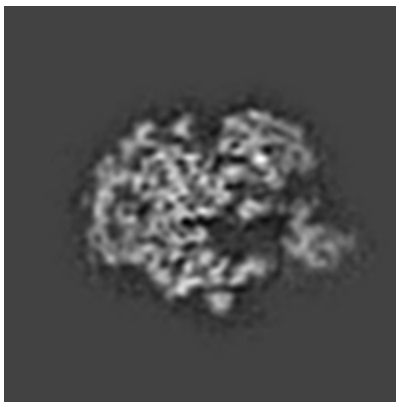
The images above show central slices of the map in three orthogonal directions.

6.3 Largest variance slices [i](#)

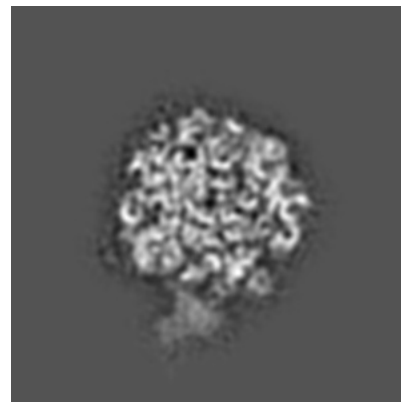
6.3.1 Primary map



X Index: 73



Y Index: 67

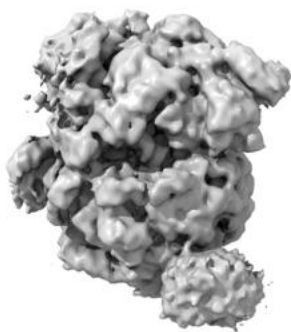


Z Index: 63

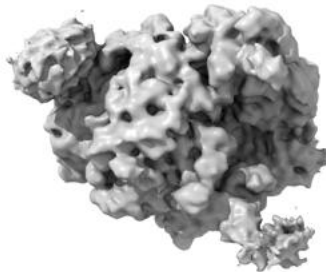
The images above show the largest variance slices of the map in three orthogonal directions.

6.4 Orthogonal surface views [i](#)

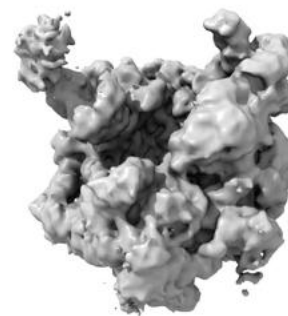
6.4.1 Primary map



X



Y



Z

The images above show the 3D surface view of the map at the recommended contour level 0.95. These images, in conjunction with the slice images, may facilitate assessment of whether an appropriate contour level has been provided.

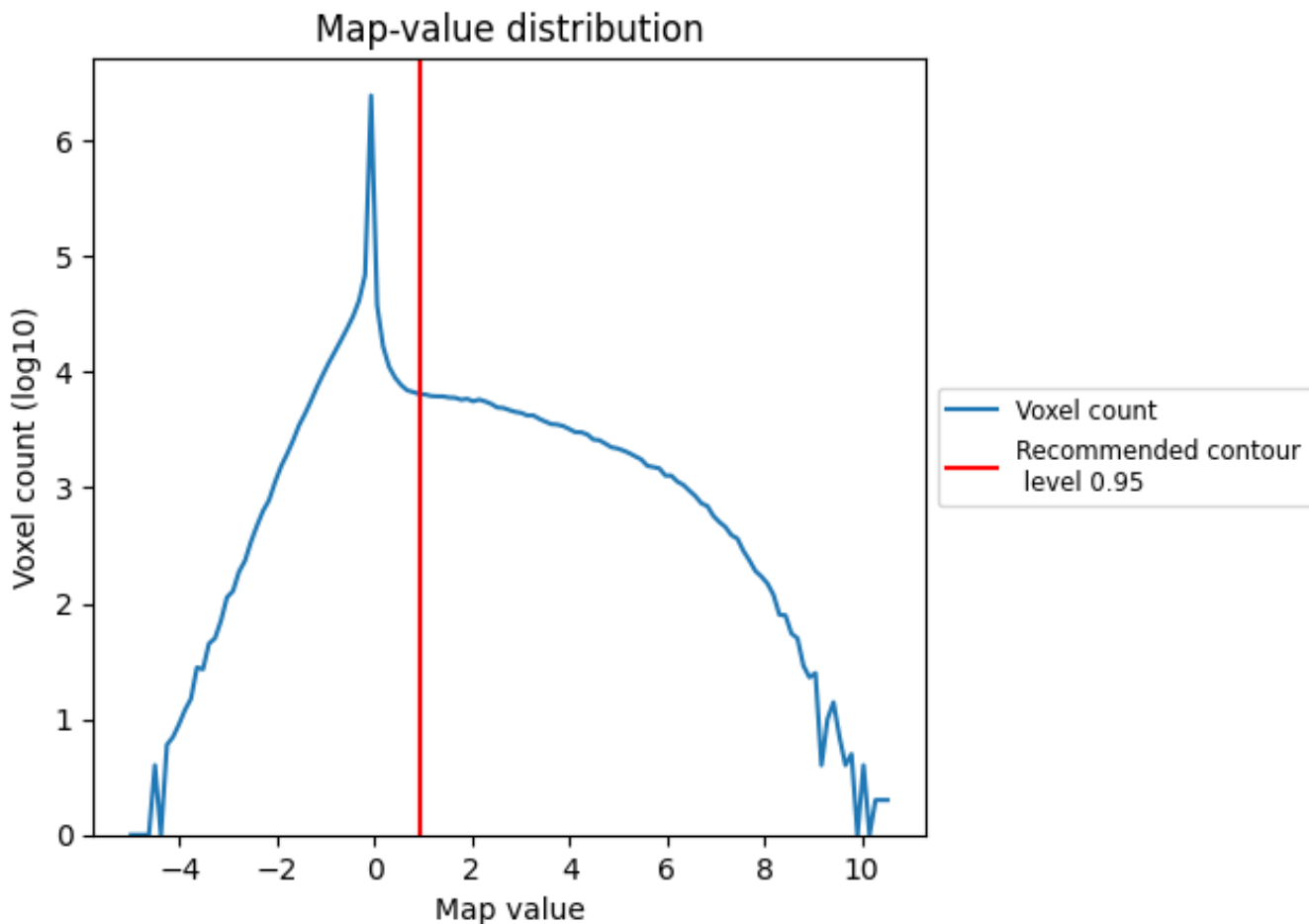
6.5 Mask visualisation

This section was not generated. No masks/segmentation were deposited.

7 Map analysis [i](#)

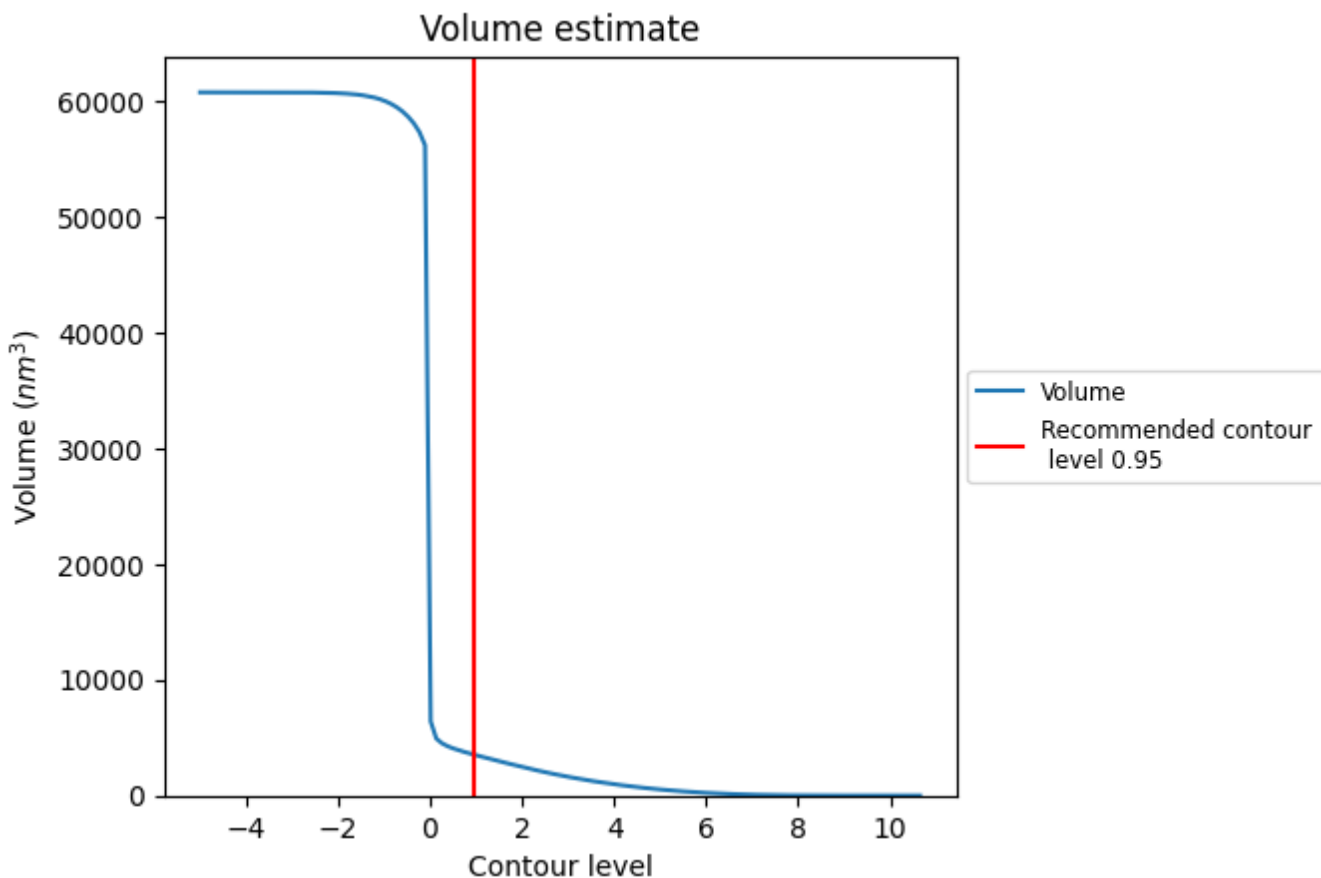
This section contains the results of statistical analysis of the map.

7.1 Map-value distribution [i](#)



The map-value distribution is plotted in 128 intervals along the x-axis. The y-axis is logarithmic. A spike in this graph at zero usually indicates that the volume has been masked.

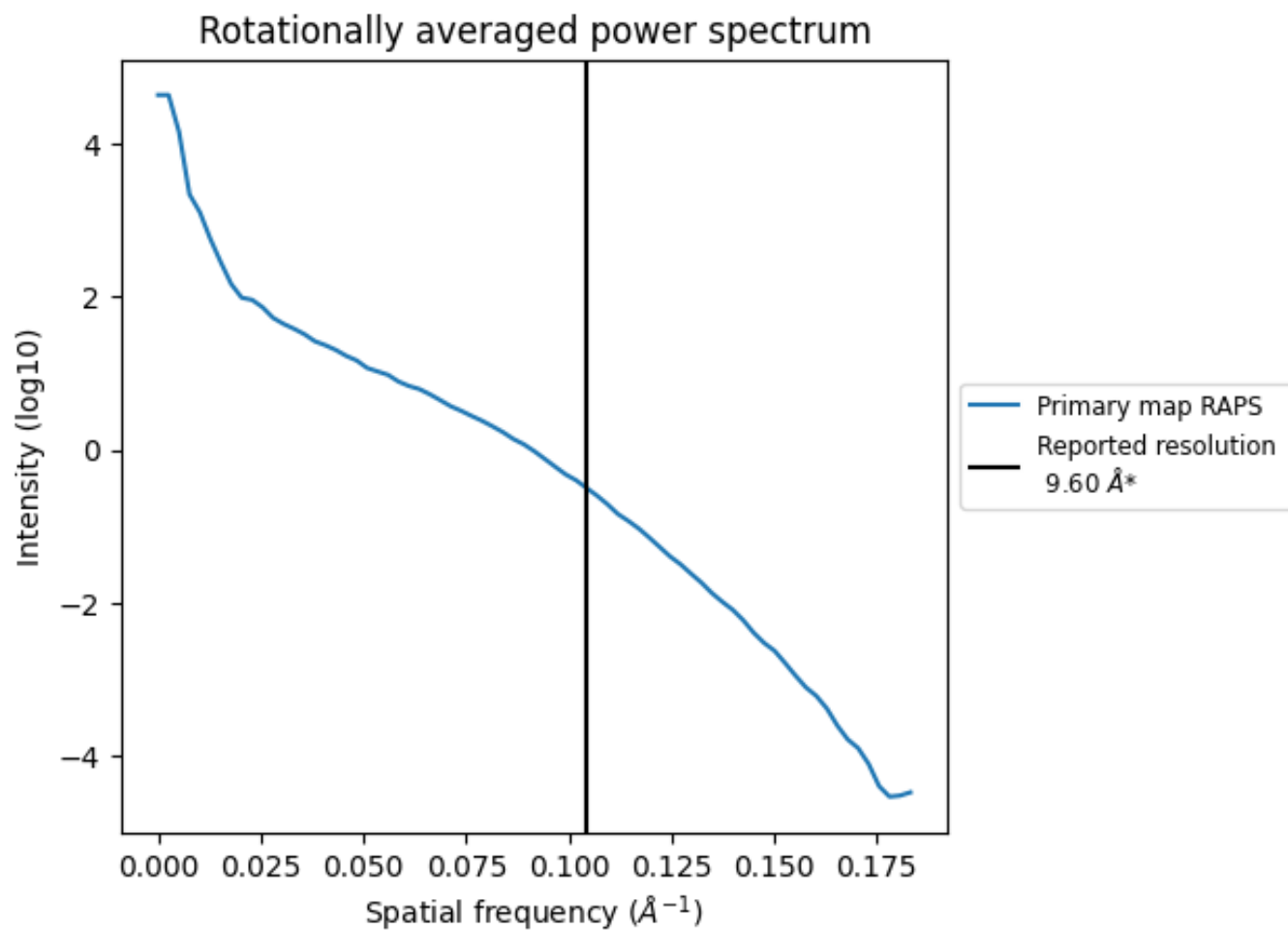
7.2 Volume estimate [i](#)



The volume at the recommended contour level is 3544 nm³; this corresponds to an approximate mass of 3201 kDa.

The volume estimate graph shows how the enclosed volume varies with the contour level. The recommended contour level is shown as a vertical line and the intersection between the line and the curve gives the volume of the enclosed surface at the given level.

7.3 Rotationally averaged power spectrum [i](#)



*Reported resolution corresponds to spatial frequency of 0.104 Å⁻¹

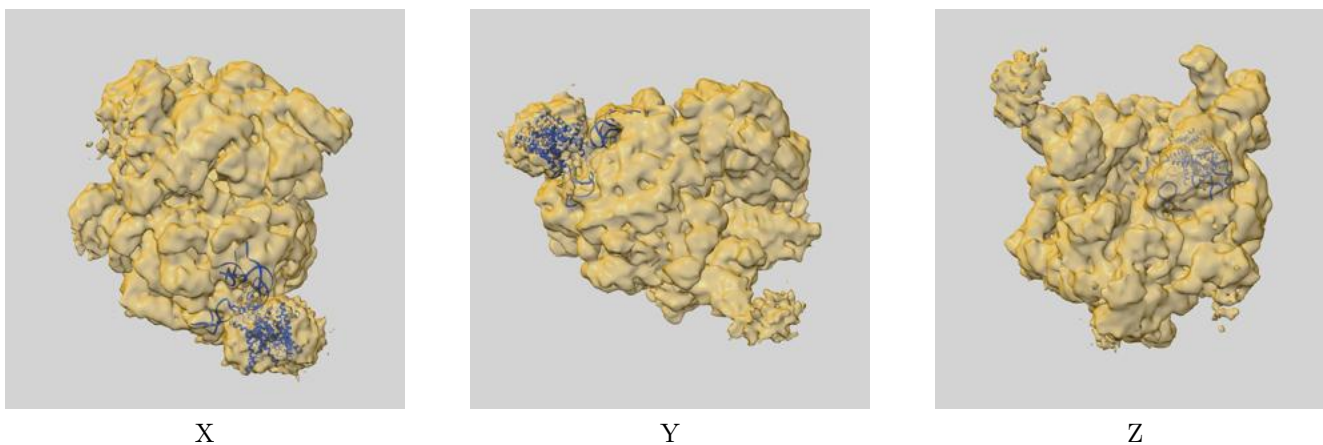
8 Fourier-Shell correlation

This section was not generated. No FSC curve or half-maps provided.

9 Map-model fit [i](#)

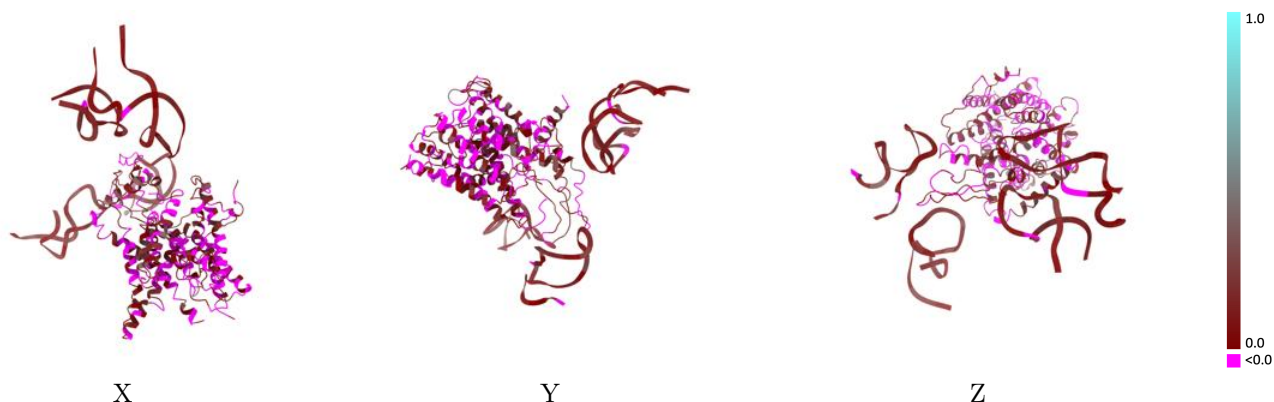
This section contains information regarding the fit between EMDB map EMD-1484 and PDB model 3BO0. Per-residue inclusion information can be found in section 3 on page 5.

9.1 Map-model overlay [i](#)



The images above show the 3D surface view of the map at the recommended contour level 0.95 at 50% transparency in yellow overlaid with a ribbon representation of the model coloured in blue. These images allow for the visual assessment of the quality of fit between the atomic model and the map.

9.2 Q-score mapped to coordinate model [\(i\)](#)



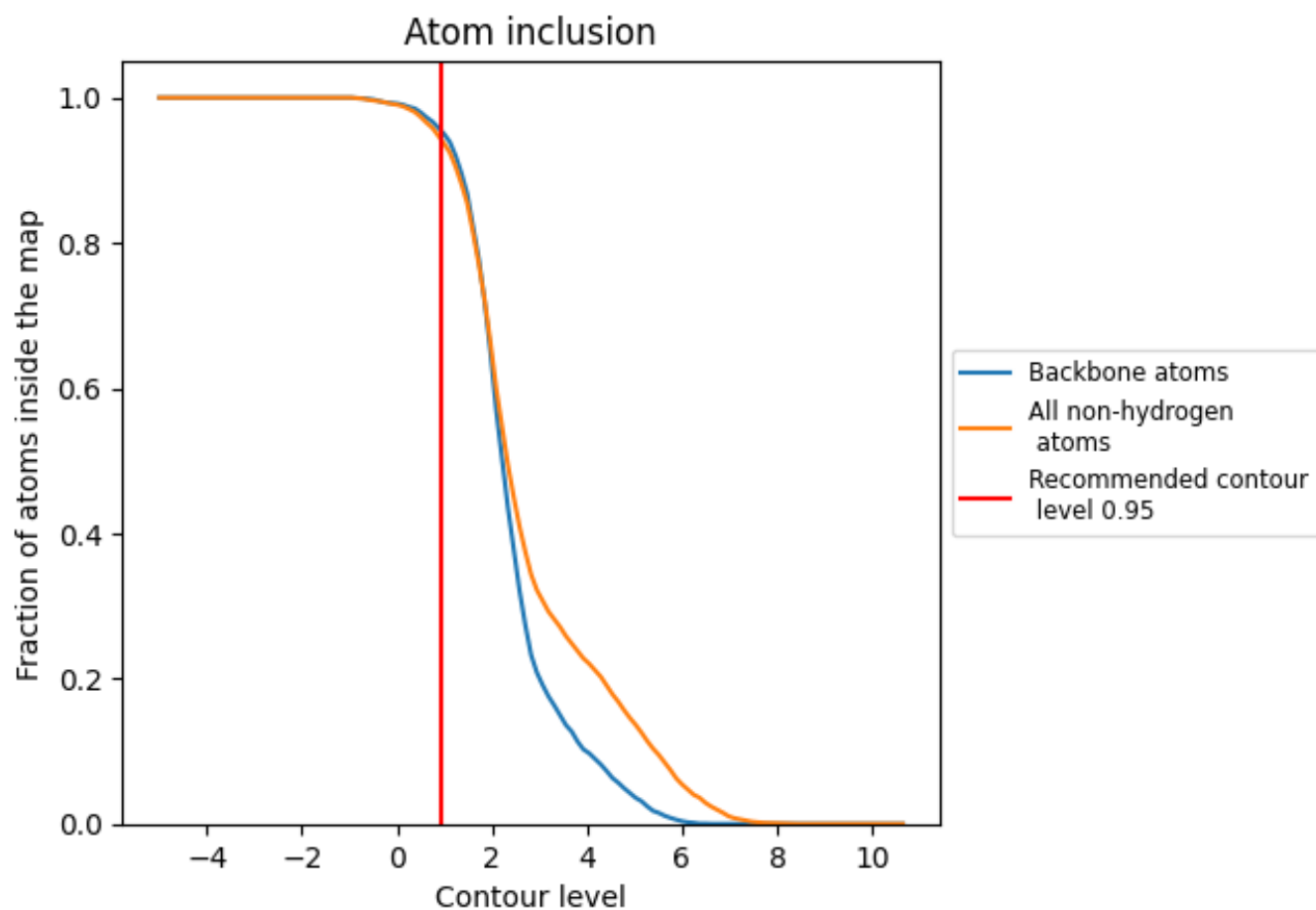
The images above show the model with each residue coloured according to its Q-score. This shows their resolvability in the map with higher Q-score values reflecting better resolvability. Please note: Q-score is calculating the resolvability of atoms, and thus high values are only expected at resolutions at which atoms can be resolved. Low Q-score values may therefore be expected for many entries.

9.3 Atom inclusion mapped to coordinate model [\(i\)](#)



The images above show the model with each residue coloured according to its atom inclusion. This shows to what extent they are inside the map at the recommended contour level (0.95).

















9.4 Atom inclusion [i](#)



At the recommended contour level, 95% of all backbone atoms, 94% of all non-hydrogen atoms, are inside the map.

9.5 Map-model fit summary

The table lists the average atom inclusion at the recommended contour level (0.95) and Q-score for the entire model and for each chain.

Chain	Atom inclusion	Q-score
All	 0.9410	 0.0750
A	 0.9269	 0.0440
B	 0.8661	 0.0690
C	 0.9722	 0.0050
D	 0.9965	 0.1500
E	 0.9916	 0.1410
F	 0.9975	 0.1480
G	 0.9291	 0.0950

