



Full wwPDB X-ray Structure Validation Report ⓘ

Aug 19, 2024 – 04:09 PM EDT

PDB ID : 9BOW
Title : X-ray structure of *Thermus thermophilus* serine hydroxymethyltransferase with PLP-L-Ser external aldimine and 5-formyltetrahydrofolate (folinic acid)
Authors : Drago, V.N.; Kovalevsky, A.
Deposited on : 2024-05-06
Resolution : 1.80 Å(reported)

This is a Full wwPDB X-ray Structure Validation Report for a publicly released PDB entry.

We welcome your comments at validation@mail.wwpdb.org

A user guide is available at

<https://www.wwpdb.org/validation/2017/XrayValidationReportHelp>

with specific help available everywhere you see the ⓘ symbol.

The types of validation reports are described at

<http://www.wwpdb.org/validation/2017/FAQs#types>.

The following versions of software and data (see [references ⓘ](#)) were used in the production of this report:

MolProbity : 4.02b-467
Mogul : 1.8.5 (274361), CSD as541be (2020)
Xtriage (Phenix) : 1.13
EDS : 2.37.1
buster-report : 1.1.7 (2018)
Percentile statistics : 20191225.v01 (using entries in the PDB archive December 25th 2019)
Refmac : 5.8.0158
CCP4 : 7.0.044 (Gargrove)
Ideal geometry (proteins) : Engh & Huber (2001)
Ideal geometry (DNA, RNA) : Parkinson et al. (1996)
Validation Pipeline (wwPDB-VP) : 2.37.1

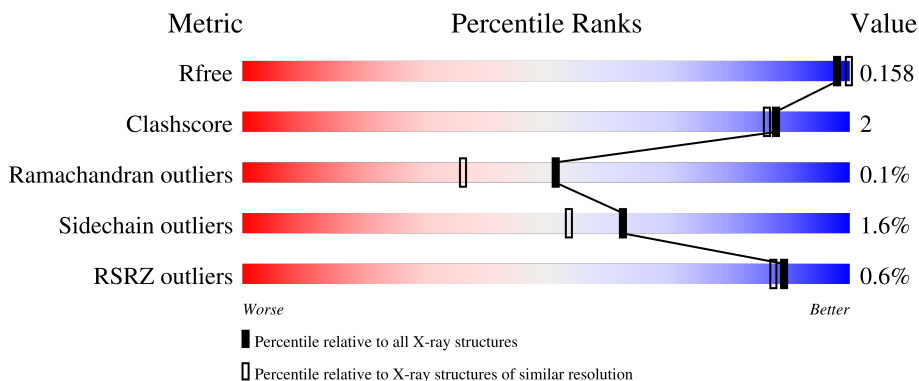
1 Overall quality at a glance

The following experimental techniques were used to determine the structure:

X-RAY DIFFRACTION

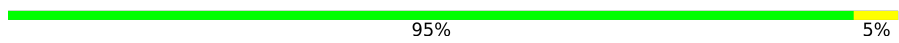
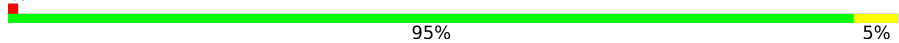
The reported resolution of this entry is 1.80 Å.

Percentile scores (ranging between 0-100) for global validation metrics of the entry are shown in the following graphic. The table shows the number of entries on which the scores are based.



Metric	Whole archive (#Entries)	Similar resolution (#Entries, resolution range(Å))
R_{free}	130704	5950 (1.80-1.80)
Clashscore	141614	6793 (1.80-1.80)
Ramachandran outliers	138981	6697 (1.80-1.80)
Sidechain outliers	138945	6696 (1.80-1.80)
RSRZ outliers	127900	5850 (1.80-1.80)

The table below summarises the geometric issues observed across the polymeric chains and their fit to the electron density. The red, orange, yellow and green segments of the lower bar indicate the fraction of residues that contain outliers for ≥ 3 , 2, 1 and 0 types of geometric quality criteria respectively. A grey segment represents the fraction of residues that are not modelled. The numeric value for each fraction is indicated below the corresponding segment, with a dot representing fractions $\leq 5\%$. The upper red bar (where present) indicates the fraction of residues that have poor fit to the electron density. The numeric value is given above the bar.

Mol	Chain	Length	Quality of chain
1	A	402	 95% 5%
2	B	402	 95% 5%

2 Entry composition [i](#)

There are 7 unique types of molecules in this entry. The entry contains 7181 atoms, of which 0 are hydrogens and 0 are deuteriums.

In the tables below, the ZeroOcc column contains the number of atoms modelled with zero occupancy, the AltConf column contains the number of residues with at least one atom in alternate conformation and the Trace column contains the number of residues modelled with at most 2 atoms.

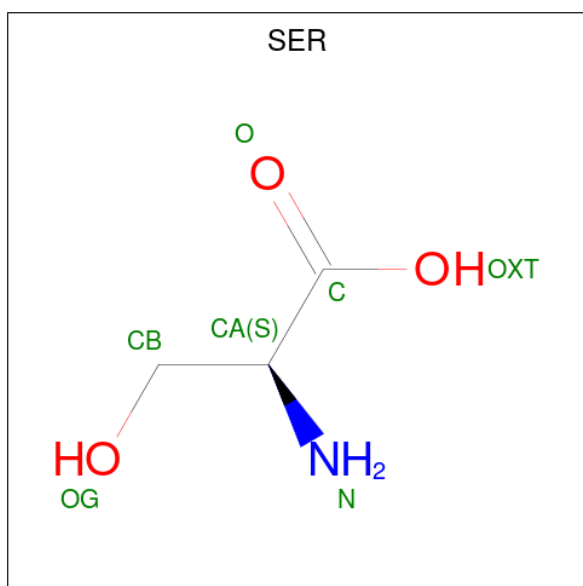
- Molecule 1 is a protein called Serine hydroxymethyltransferase.

Mol	Chain	Residues	Atoms						ZeroOcc	AltConf	Trace
			Total	C	N	O	P	S			
1	A	402	3144	1995	561	578	1	9	0	2	0

- Molecule 2 is a protein called Serine hydroxymethyltransferase.

Mol	Chain	Residues	Atoms					ZeroOcc	AltConf	Trace
			Total	C	N	O	S			
2	B	402	3138	1993	562	574	9	0	4	0

- Molecule 3 is SERINE (three-letter code: SER) (formula: C₃H₇NO₃) (labeled as "Ligand of Interest" by depositor).



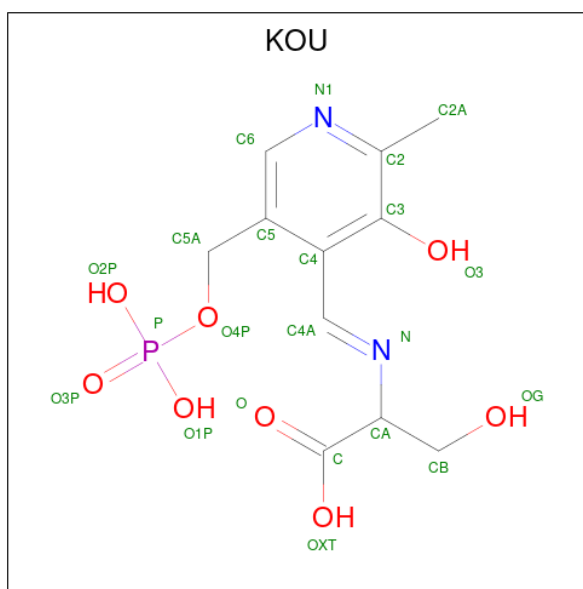
Mol	Chain	Residues	Atoms				ZeroOcc	AltConf
			Total	C	N	O		
3	A	1	7	3	1	3	0	0

- Molecule 4 is SULFATE ION (three-letter code: SO4) (formula: O₄S).



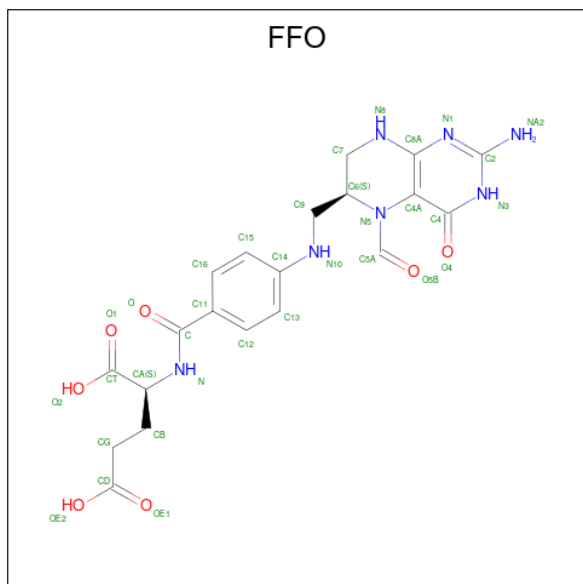
Mol	Chain	Residues	Atoms	ZeroOcc	AltConf
4	A	1	Total O S 5 4 1	0	0
4	B	1	Total O S 5 4 1	0	0

- Molecule 5 is (E)-N-({3-hydroxy-2-methyl-5-[(phosphonoxy)methyl]pyridin-4-yl}methylidene)-L-serine (three-letter code: KOU) (formula: $C_{11}H_{15}N_2O_8P$) (labeled as "Ligand of Interest" by depositor).



Mol	Chain	Residues	Atoms	ZeroOcc	AltConf
5	B	1	Total C N O P 22 11 2 8 1	0	0

- Molecule 6 is N-[4-({[(6S)-2-amino-5-formyl-4-oxo-3,4,5,6,7,8-hexahydropteridin-6-yl]methyl}amino)benzoyl]-L-glutamic acid (three-letter code: FFO) (formula: C₂₀H₂₃N₇O₇) (labeled as "Ligand of Interest" by depositor).



Mol	Chain	Residues	Atoms				ZeroOcc	AltConf
			Total	C	N	O		
6	B	1	34	20	7	7	0	0

- Molecule 7 is water.

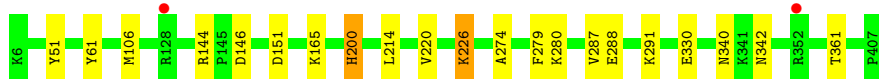
Mol	Chain	Residues	Atoms		ZeroOcc	AltConf
			Total	O		
7	A	423	423	423	0	0
7	B	403	403	403	0	0

3 Residue-property plots [i](#)

These plots are drawn for all protein, RNA, DNA and oligosaccharide chains in the entry. The first graphic for a chain summarises the proportions of the various outlier classes displayed in the second graphic. The second graphic shows the sequence view annotated by issues in geometry and electron density. Residues are color-coded according to the number of geometric quality criteria for which they contain at least one outlier: green = 0, yellow = 1, orange = 2 and red = 3 or more. A red dot above a residue indicates a poor fit to the electron density ($RSRZ > 2$). Stretches of 2 or more consecutive residues without any outlier are shown as a green connector. Residues present in the sample, but not in the model, are shown in grey.

- Molecule 1: Serine hydroxymethyltransferase

Chain A:  95% 5%



- Molecule 2: Serine hydroxymethyltransferase

Chain B:  95% 5%



4 Data and refinement statistics i

Property	Value	Source
Space group	P 1 21 1	Depositor
Cell constants a, b, c, α , β , γ	58.13Å 82.81Å 94.45Å 90.00° 91.58° 90.00°	Depositor
Resolution (Å)	29.05 – 1.80 29.05 – 1.80	Depositor EDS
% Data completeness (in resolution range)	92.0 (29.05-1.80) 92.1 (29.05-1.80)	Depositor EDS
R_{merge}	0.03	Depositor
R_{sym}	(Not available)	Depositor
$\langle I/\sigma(I) \rangle$ ¹	6.98 (at 1.80Å)	Xtrriage
Refinement program	PHENIX 1.20.1_4487	Depositor
R, R_{free}	0.132 , 0.160 0.134 , 0.158	Depositor DCC
R_{free} test set	3841 reflections (5.03%)	wwPDB-VP
Wilson B-factor (Å ²)	11.1	Xtrriage
Anisotropy	0.443	Xtrriage
Bulk solvent k_{sol} (e/Å ³), B_{sol} (Å ²)	0.37 , 52.0	EDS
L-test for twinning ²	$\langle L \rangle = 0.49$, $\langle L^2 \rangle = 0.32$	Xtrriage
Estimated twinning fraction	0.025 for h,-k,-l	Xtrriage
F_o, F_c correlation	0.96	EDS
Total number of atoms	7181	wwPDB-VP
Average B, all atoms (Å ²)	13.0	wwPDB-VP

Xtrriage's analysis on translational NCS is as follows: *The largest off-origin peak in the Patterson function is 4.84% of the height of the origin peak. No significant pseudotranslation is detected.*

¹Intensities estimated from amplitudes.

²Theoretical values of $\langle |L| \rangle$, $\langle L^2 \rangle$ for acentric reflections are 0.5, 0.333 respectively for untwinned datasets, and 0.375, 0.2 for perfectly twinned datasets.

5 Model quality

5.1 Standard geometry

Bond lengths and bond angles in the following residue types are not validated in this section: SO4, FFO, KOU, LLP

The Z score for a bond length (or angle) is the number of standard deviations the observed value is removed from the expected value. A bond length (or angle) with $|Z| > 5$ is considered an outlier worth inspection. RMSZ is the root-mean-square of all Z scores of the bond lengths (or angles).

Mol	Chain	Bond lengths		Bond angles	
		RMSZ	# Z >5	RMSZ	# Z >5
1	A	0.64	0/3185	0.75	0/4312
2	B	0.62	0/3207	0.72	0/4343
All	All	0.63	0/6392	0.74	0/8655

There are no bond length outliers.

There are no bond angle outliers.

There are no chirality outliers.

There are no planarity outliers.

5.2 Too-close contacts

In the following table, the Non-H and H(model) columns list the number of non-hydrogen atoms and hydrogen atoms in the chain respectively. The H(added) column lists the number of hydrogen atoms added and optimized by MolProbity. The Clashes column lists the number of clashes within the asymmetric unit, whereas Symm-Clashes lists symmetry-related clashes.

Mol	Chain	Non-H	H(model)	H(added)	Clashes	Symm-Clashes
1	A	3144	0	3162	10	0
2	B	3138	0	3171	12	0
3	A	7	0	4	1	0
4	A	5	0	0	0	0
4	B	5	0	0	0	0
5	B	22	0	11	2	0
6	B	34	0	21	3	0
7	A	423	0	0	3	0
7	B	403	0	0	4	0
All	All	7181	0	6369	25	0

The all-atom clashscore is defined as the number of clashes found per 1000 atoms (including

hydrogen atoms). The all-atom clashscore for this structure is 2.

All (25) close contacts within the same asymmetric unit are listed below, sorted by their clash magnitude.

Atom-1	Atom-2	Interatomic distance (Å)	Clash overlap (Å)
1:A:144:ARG:HG3	1:A:151:ASP:HB2	1.76	0.68
2:B:287:VAL:HG12	2:B:291:LYS:HE2	1.79	0.65
6:B:502:FFO:O4	6:B:502:FFO:H5A	2.01	0.60
5:B:501:KOU:HBA	6:B:502:FFO:C5A	2.34	0.57
3:A:501:SER:N	2:B:61:TYR:HH	2.05	0.54
2:B:223:THR:HG21	2:B:226:LYS:NZ	2.24	0.53
1:A:61:TYR:OH	5:B:501:KOU:HB	2.09	0.52
1:A:330:GLU:HG3	7:A:610:HOH:O	2.09	0.52
1:A:280:LYS:HG3	7:A:790:HOH:O	2.11	0.51
2:B:37:LYS:HE3	2:B:407:PRO:HB2	1.93	0.51
2:B:372:GLU:HG2	7:B:860:HOH:O	2.10	0.50
2:B:40:ARG:HD2	7:B:820:HOH:O	2.14	0.47
1:A:106:MET:HG2	1:A:165:LYS:HG2	1.99	0.45
2:B:106:MET:HG2	2:B:165:LYS:HG2	1.98	0.44
2:B:287:VAL:CG1	2:B:291:LYS:HE2	2.46	0.43
2:B:291:LYS:HD3	7:B:800:HOH:O	2.18	0.43
1:A:214:LEU:HD22	1:A:220:VAL:HG21	1.99	0.43
1:A:287:VAL:HG12	1:A:291:LYS:HE2	2.01	0.42
2:B:22:GLN:HG2	7:B:885:HOH:O	2.18	0.42
1:A:288:GLU:HG3	7:A:777:HOH:O	2.20	0.42
2:B:361:THR:N	2:B:362:PRO:CD	2.83	0.41
2:B:53:GLU:HB3	2:B:252:PHE:CZ	2.56	0.41
1:A:200:HIS:HD2	1:A:226:LLP:O3	2.03	0.41
1:A:274:ALA:HA	1:A:279:PHE:CG	2.56	0.41
6:B:502:FFO:O4	6:B:502:FFO:C5A	2.68	0.40

There are no symmetry-related clashes.

5.3 Torsion angles [i](#)

5.3.1 Protein backbone [i](#)

In the following table, the Percentiles column shows the percent Ramachandran outliers of the chain as a percentile score with respect to all X-ray entries followed by that with respect to entries of similar resolution.

The Analysed column shows the number of residues for which the backbone conformation was analysed, and the total number of residues.

Mol	Chain	Analysed	Favoured	Allowed	Outliers	Percentiles	
1	A	401/402 (100%)	393 (98%)	7 (2%)	1 (0%)	47	33
2	B	404/402 (100%)	394 (98%)	10 (2%)	0	100	100
All	All	805/804 (100%)	787 (98%)	17 (2%)	1 (0%)	51	36

All (1) Ramachandran outliers are listed below:

Mol	Chain	Res	Type
1	A	361	THR

5.3.2 Protein sidechains [i](#)

In the following table, the Percentiles column shows the percent sidechain outliers of the chain as a percentile score with respect to all X-ray entries followed by that with respect to entries of similar resolution.

The Analysed column shows the number of residues for which the sidechain conformation was analysed, and the total number of residues.

Mol	Chain	Analysed	Rotameric	Outliers	Percentiles	
1	A	321/319 (101%)	316 (98%)	5 (2%)	62	54
2	B	324/320 (101%)	319 (98%)	5 (2%)	65	56
All	All	645/639 (101%)	635 (98%)	10 (2%)	62	54

All (10) residues with a non-rotameric sidechain are listed below:

Mol	Chain	Res	Type
1	A	51	TYR
1	A	146	ASP
1	A	200	HIS
1	A	340	ASN
1	A	342	ASN
2	B	51	TYR
2	B	117	LEU
2	B	299	ARG
2	B	333	ASP
2	B	342	ASN

Sometimes sidechains can be flipped to improve hydrogen bonding and reduce clashes. There are no such sidechains identified.

5.3.3 RNA [i](#)

There are no RNA molecules in this entry.

5.4 Non-standard residues in protein, DNA, RNA chains [i](#)

1 non-standard protein/DNA/RNA residue is modelled in this entry.

In the following table, the Counts columns list the number of bonds (or angles) for which Mogul statistics could be retrieved, the number of bonds (or angles) that are observed in the model and the number of bonds (or angles) that are defined in the Chemical Component Dictionary. The Link column lists molecule types, if any, to which the group is linked. The Z score for a bond length (or angle) is the number of standard deviations the observed value is removed from the expected value. A bond length (or angle) with $|Z| > 2$ is considered an outlier worth inspection. RMSZ is the root-mean-square of all Z scores of the bond lengths (or angles).

Mol	Type	Chain	Res	Link	Bond lengths			Bond angles		
					Counts	RMSZ	# Z > 2	Counts	RMSZ	# Z > 2
1	LLP	A	226	1	23,24,25	1.54	6 (26%)	25,32,34	2.45	9 (36%)

In the following table, the Chirals column lists the number of chiral outliers, the number of chiral centers analysed, the number of these observed in the model and the number defined in the Chemical Component Dictionary. Similar counts are reported in the Torsion and Rings columns. '-' means no outliers of that kind were identified.

Mol	Type	Chain	Res	Link	Chirals	Torsions	Rings
1	LLP	A	226	1	-	1/16/17/19	0/1/1/1

All (6) bond length outliers are listed below:

Mol	Chain	Res	Type	Atoms	Z	Observed(Å)	Ideal(Å)
1	A	226	LLP	C6-N1	-3.11	1.27	1.34
1	A	226	LLP	CB-CA	2.84	1.57	1.53
1	A	226	LLP	C3-C2	2.69	1.43	1.40
1	A	226	LLP	OP4-C5'	-2.31	1.36	1.45
1	A	226	LLP	CD-CE	2.25	1.59	1.51
1	A	226	LLP	C4-C3	2.24	1.44	1.40

All (9) bond angle outliers are listed below:

Mol	Chain	Res	Type	Atoms	Z	Observed(°)	Ideal(°)
1	A	226	LLP	OP4-C5'-C5	8.19	124.96	109.35
1	A	226	LLP	C6-N1-C2	4.37	127.26	119.17
1	A	226	LLP	C3-C4-C5	-3.34	115.70	118.26

Continued on next page...

Continued from previous page...

Mol	Chain	Res	Type	Atoms	Z	Observed(°)	Ideal(°)
1	A	226	LLP	C3-C2-N1	-2.72	117.26	120.77
1	A	226	LLP	CE-NZ-C4'	2.56	126.76	118.90
1	A	226	LLP	C2'-C2-C3	2.42	123.88	120.89
1	A	226	LLP	C5-C6-N1	-2.42	119.79	123.82
1	A	226	LLP	C5-C4-C4'	2.36	125.43	121.56
1	A	226	LLP	O3-C3-C4	2.04	125.08	119.60

There are no chirality outliers.

All (1) torsion outliers are listed below:

Mol	Chain	Res	Type	Atoms
1	A	226	LLP	O-C-CA-CB

There are no ring outliers.

1 monomer is involved in 1 short contact:

Mol	Chain	Res	Type	Clashes	Symm-Clashes
1	A	226	LLP	1	0

5.5 Carbohydrates [i](#)

There are no monosaccharides in this entry.

5.6 Ligand geometry [i](#)

5 ligands are modelled in this entry.

In the following table, the Counts columns list the number of bonds (or angles) for which Mogul statistics could be retrieved, the number of bonds (or angles) that are observed in the model and the number of bonds (or angles) that are defined in the Chemical Component Dictionary. The Link column lists molecule types, if any, to which the group is linked. The Z score for a bond length (or angle) is the number of standard deviations the observed value is removed from the expected value. A bond length (or angle) with $|Z| > 2$ is considered an outlier worth inspection. RMSZ is the root-mean-square of all Z scores of the bond lengths (or angles).

Mol	Type	Chain	Res	Link	Bond lengths			Bond angles		
					Counts	RMSZ	# Z > 2	Counts	RMSZ	# Z > 2
4	SO4	B	503	-	4,4,4	0.52	0	6,6,6	0.06	0
5	KOU	B	501	-	22,22,22	2.30	5 (22%)	27,31,31	2.02	7 (25%)
6	FFO	B	502	-	33,36,36	1.10	3 (9%)	36,50,50	1.40	5 (13%)

Mol	Type	Chain	Res	Link	Bond lengths			Bond angles		
					Counts	RMSZ	# Z > 2	Counts	RMSZ	# Z > 2
4	SO4	A	502	-	4,4,4	0.51	0	6,6,6	0.08	0
3	SER	A	501	-	5,6,6	1.07	1 (20%)	5,7,7	1.51	0

In the following table, the Chirals column lists the number of chiral outliers, the number of chiral centers analysed, the number of these observed in the model and the number defined in the Chemical Component Dictionary. Similar counts are reported in the Torsion and Rings columns. '-' means no outliers of that kind were identified.

Mol	Type	Chain	Res	Link	Chirals	Torsions	Rings
5	KOU	B	501	-	-	1/17/17/17	0/1/1/1
6	FFO	B	502	-	-	6/24/37/37	0/3/3/3
3	SER	A	501	-	-	0/6/6/6	-

All (9) bond length outliers are listed below:

Mol	Chain	Res	Type	Atoms	Z	Observed(Å)	Ideal(Å)
5	B	501	KOU	O3-C3	-5.72	1.23	1.37
5	B	501	KOU	CA-C	5.05	1.58	1.52
5	B	501	KOU	C3-C2	4.67	1.45	1.40
5	B	501	KOU	OXT-C	-3.70	1.18	1.30
5	B	501	KOU	C4-C3	3.47	1.46	1.40
6	B	502	FFO	C2-N3	-3.02	1.30	1.37
3	A	501	SER	OXT-C	-2.17	1.23	1.30
6	B	502	FFO	CG-CD	2.13	1.55	1.50
6	B	502	FFO	C4A-N5	2.01	1.41	1.38

All (12) bond angle outliers are listed below:

Mol	Chain	Res	Type	Atoms	Z	Observed(°)	Ideal(°)
5	B	501	KOU	CA-N-C4A	5.86	125.76	117.31
5	B	501	KOU	C6-N1-C2	4.01	126.60	119.17
6	B	502	FFO	C2-N1-C8A	3.65	120.01	113.43
6	B	502	FFO	C4A-C4-N3	3.62	117.38	110.99
5	B	501	KOU	C3-C2-N1	-3.36	116.42	120.77
5	B	501	KOU	C-CA-N	2.91	114.43	108.67
5	B	501	KOU	C2A-C2-N1	2.78	123.10	117.67
5	B	501	KOU	C3-C4-C5	2.68	120.32	118.26
5	B	501	KOU	C4-C3-C2	-2.59	118.58	120.19
6	B	502	FFO	C2-N3-C4	-2.44	120.66	125.10
6	B	502	FFO	O4-C4-C4A	-2.13	122.32	127.54
6	B	502	FFO	C9-N10-C14	2.08	127.51	122.14

There are no chirality outliers.

All (7) torsion outliers are listed below:

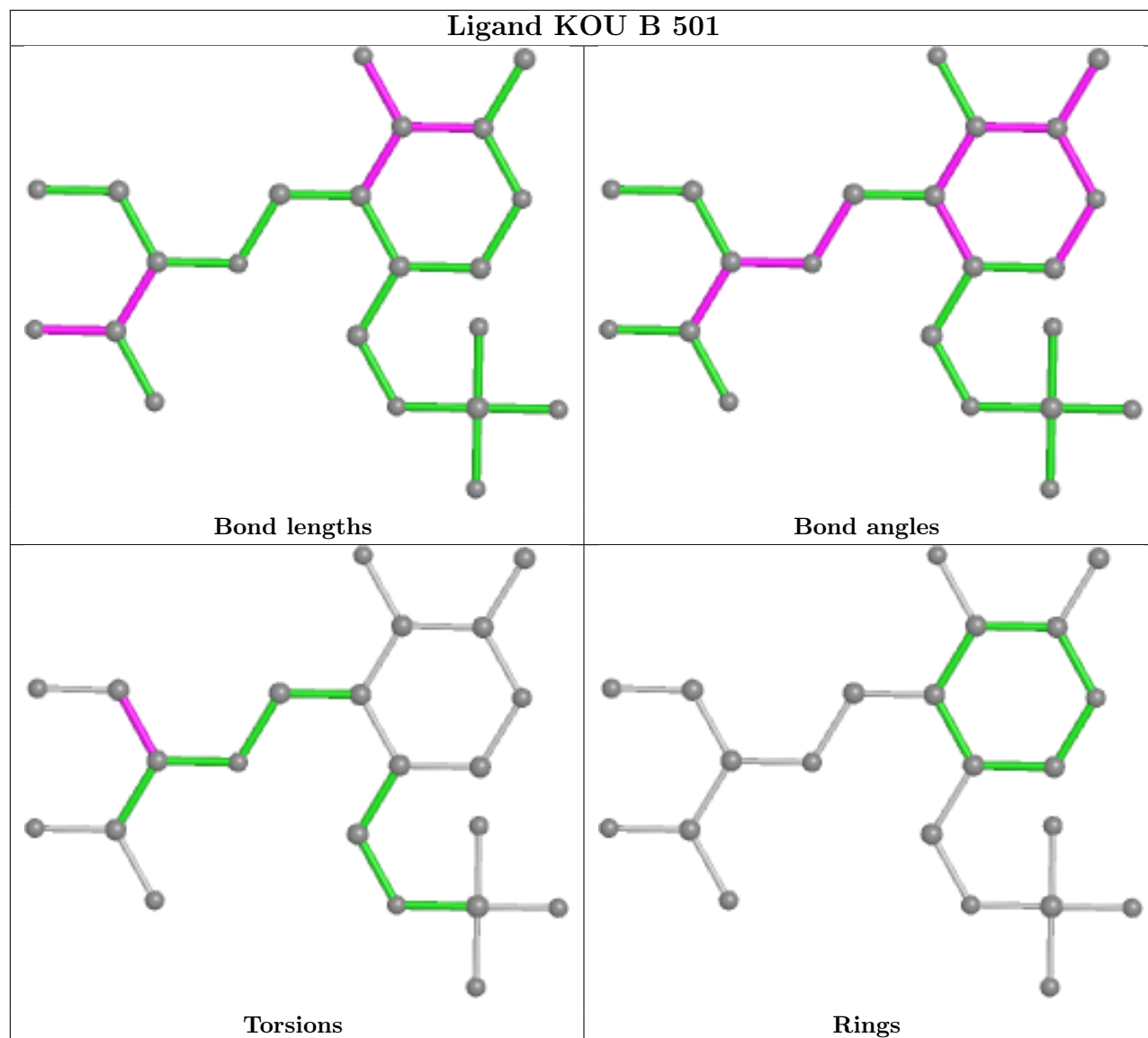
Mol	Chain	Res	Type	Atoms
5	B	501	KOU	N-CA-CB-OG
6	B	502	FFO	N-CA-CB-CG
6	B	502	FFO	C15-C14-N10-C9
6	B	502	FFO	C13-C14-N10-C9
6	B	502	FFO	CT-CA-CB-CG
6	B	502	FFO	C6-C9-N10-C14
6	B	502	FFO	OE2-CD-CG-CB

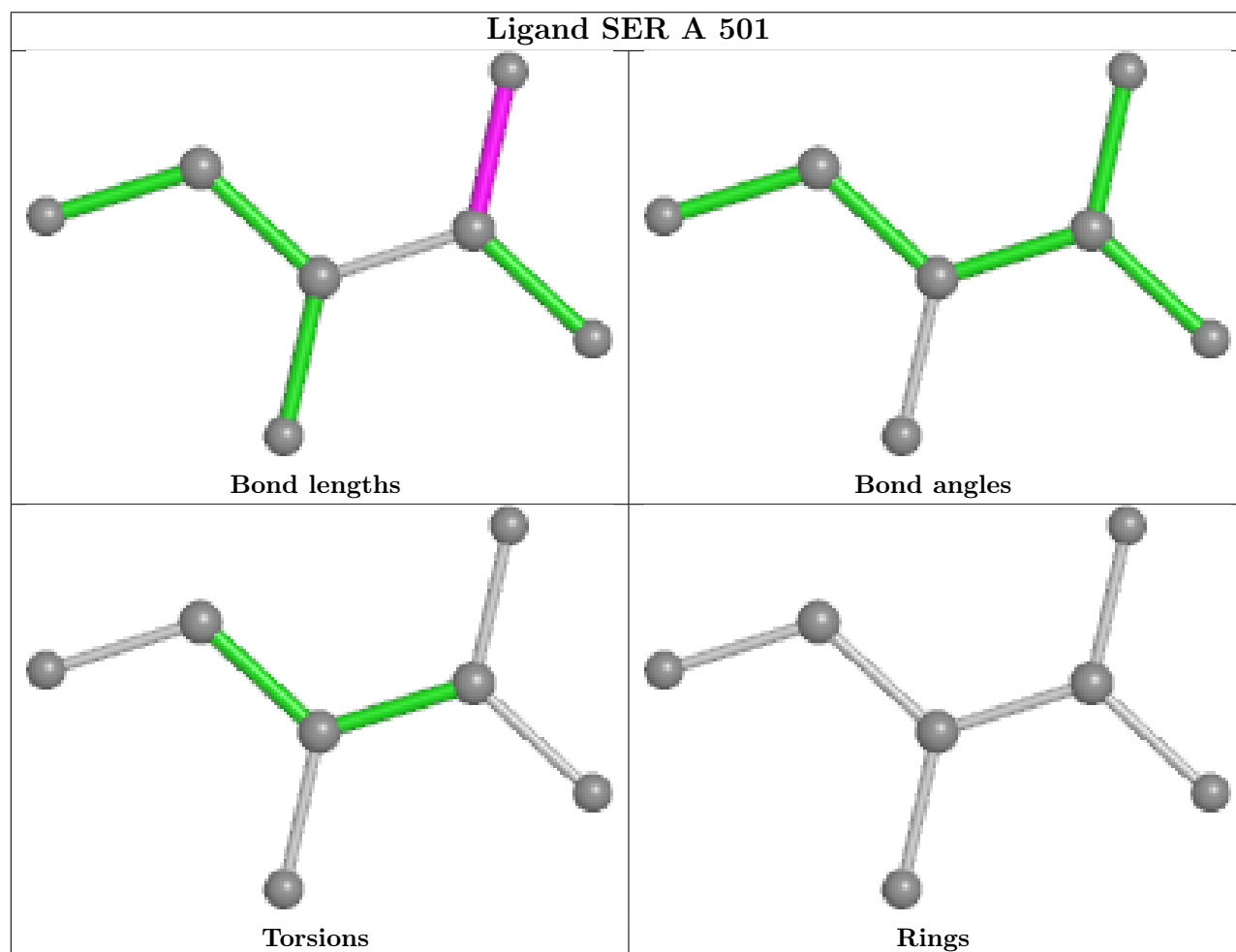
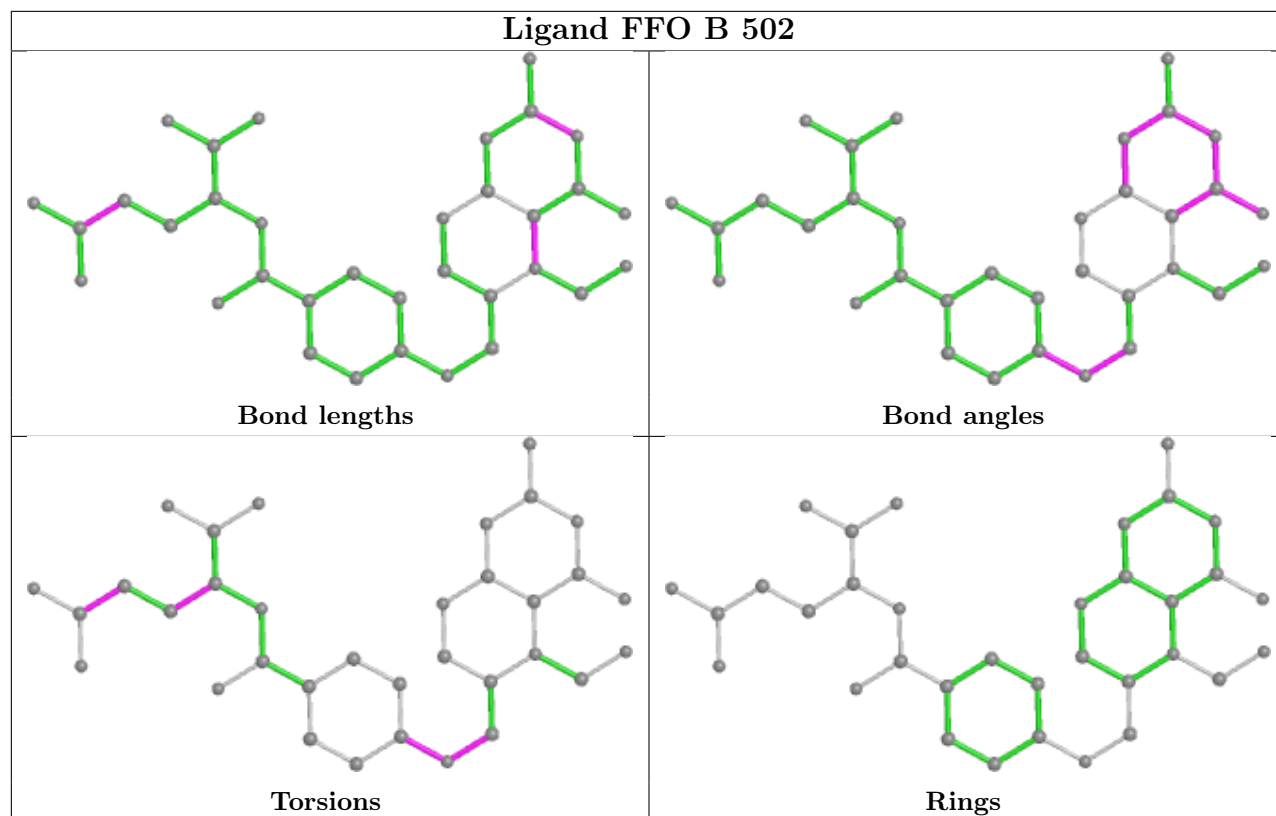
There are no ring outliers.

3 monomers are involved in 5 short contacts:

Mol	Chain	Res	Type	Clashes	Symm-Clashes
5	B	501	KOU	2	0
6	B	502	FFO	3	0
3	A	501	SER	1	0

The following is a two-dimensional graphical depiction of Mogul quality analysis of bond lengths, bond angles, torsion angles, and ring geometry for all instances of the Ligand of Interest. In addition, ligands with molecular weight > 250 and outliers as shown on the validation Tables will also be included. For torsion angles, if less than 5% of the Mogul distribution of torsion angles is within 10 degrees of the torsion angle in question, then that torsion angle is considered an outlier. Any bond that is central to one or more torsion angles identified as an outlier by Mogul will be highlighted in the graph. For rings, the root-mean-square deviation (RMSD) between the ring in question and similar rings identified by Mogul is calculated over all ring torsion angles. If the average RMSD is greater than 60 degrees and the minimal RMSD between the ring in question and any Mogul-identified rings is also greater than 60 degrees, then that ring is considered an outlier. The outliers are highlighted in purple. The color gray indicates Mogul did not find sufficient equivalents in the CSD to analyse the geometry.





5.7 Other polymers [i](#)

There are no such residues in this entry.

5.8 Polymer linkage issues [i](#)

There are no chain breaks in this entry.

6 Fit of model and data [i](#)

6.1 Protein, DNA and RNA chains [i](#)

In the following table, the column labelled ‘#RSRZ > 2’ contains the number (and percentage) of RSRZ outliers, followed by percent RSRZ outliers for the chain as percentile scores relative to all X-ray entries and entries of similar resolution. The OWAB column contains the minimum, median, 95th percentile and maximum values of the occupancy-weighted average B-factor per residue. The column labelled ‘Q < 0.9’ lists the number of (and percentage) of residues with an average occupancy less than 0.9.

Mol	Chain	Analysed	<RSRZ>	#RSRZ>2	OWAB(Å ²)	Q<0.9
1	A	401/402 (99%)	-0.49	2 (0%) 91 89	4, 9, 21, 44	0
2	B	402/402 (100%)	-0.39	3 (0%) 87 86	4, 10, 24, 50	0
All	All	803/804 (99%)	-0.44	5 (0%) 89 87	4, 10, 22, 50	0

All (5) RSRZ outliers are listed below:

Mol	Chain	Res	Type	RSRZ
2	B	407	PRO	5.7
1	A	128	ARG	2.6
1	A	352	ARG	2.4
2	B	322	GLY	2.3
2	B	348	PRO	2.2

6.2 Non-standard residues in protein, DNA, RNA chains [i](#)

In the following table, the Atoms column lists the number of modelled atoms in the group and the number defined in the chemical component dictionary. The B-factors column lists the minimum, median, 95th percentile and maximum values of B factors of atoms in the group. The column labelled ‘Q < 0.9’ lists the number of atoms with occupancy less than 0.9.

Mol	Type	Chain	Res	Atoms	RSCC	RSR	B-factors(Å ²)	Q<0.9
1	LLP	A	226	24/25	0.96	0.11	4,9,15,15	0

6.3 Carbohydrates [i](#)

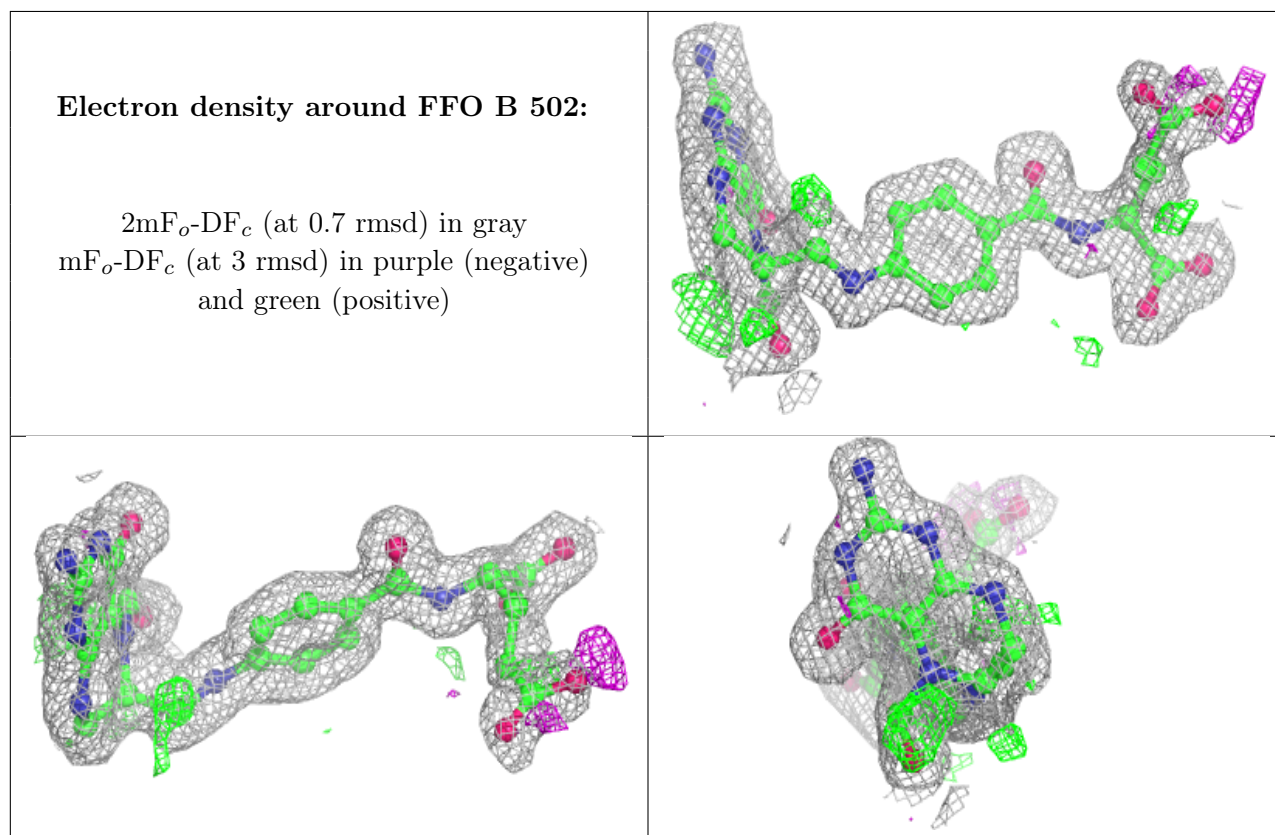
There are no monosaccharides in this entry.

6.4 Ligands [i](#)

In the following table, the Atoms column lists the number of modelled atoms in the group and the number defined in the chemical component dictionary. The B-factors column lists the minimum, median, 95th percentile and maximum values of B factors of atoms in the group. The column labelled 'Q < 0.9' lists the number of atoms with occupancy less than 0.9.

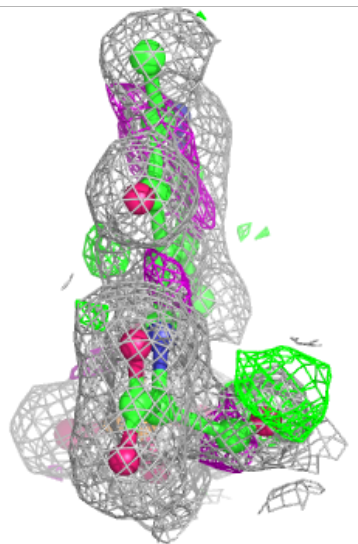
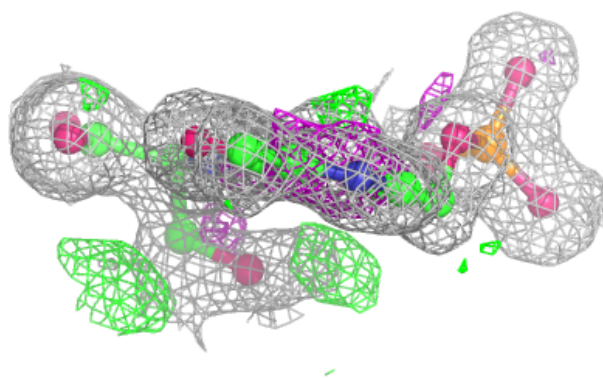
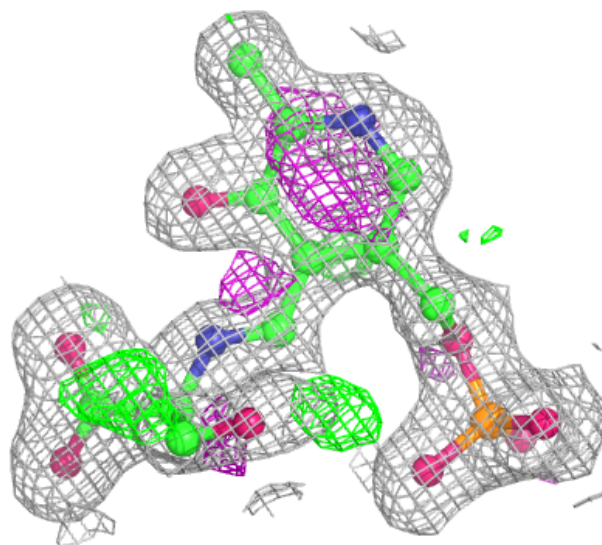
Mol	Type	Chain	Res	Atoms	RSCC	RSR	B-factors(Å ²)	Q<0.9
6	FFO	B	502	34/34	0.86	0.14	13,18,27,35	0
4	SO4	A	502	5/5	0.94	0.21	38,47,50,55	0
5	KOU	B	501	22/22	0.96	0.12	5,12,18,27	0
3	SER	A	501	7/7	0.96	0.10	14,14,18,20	0
4	SO4	B	503	5/5	0.97	0.23	39,51,52,52	0

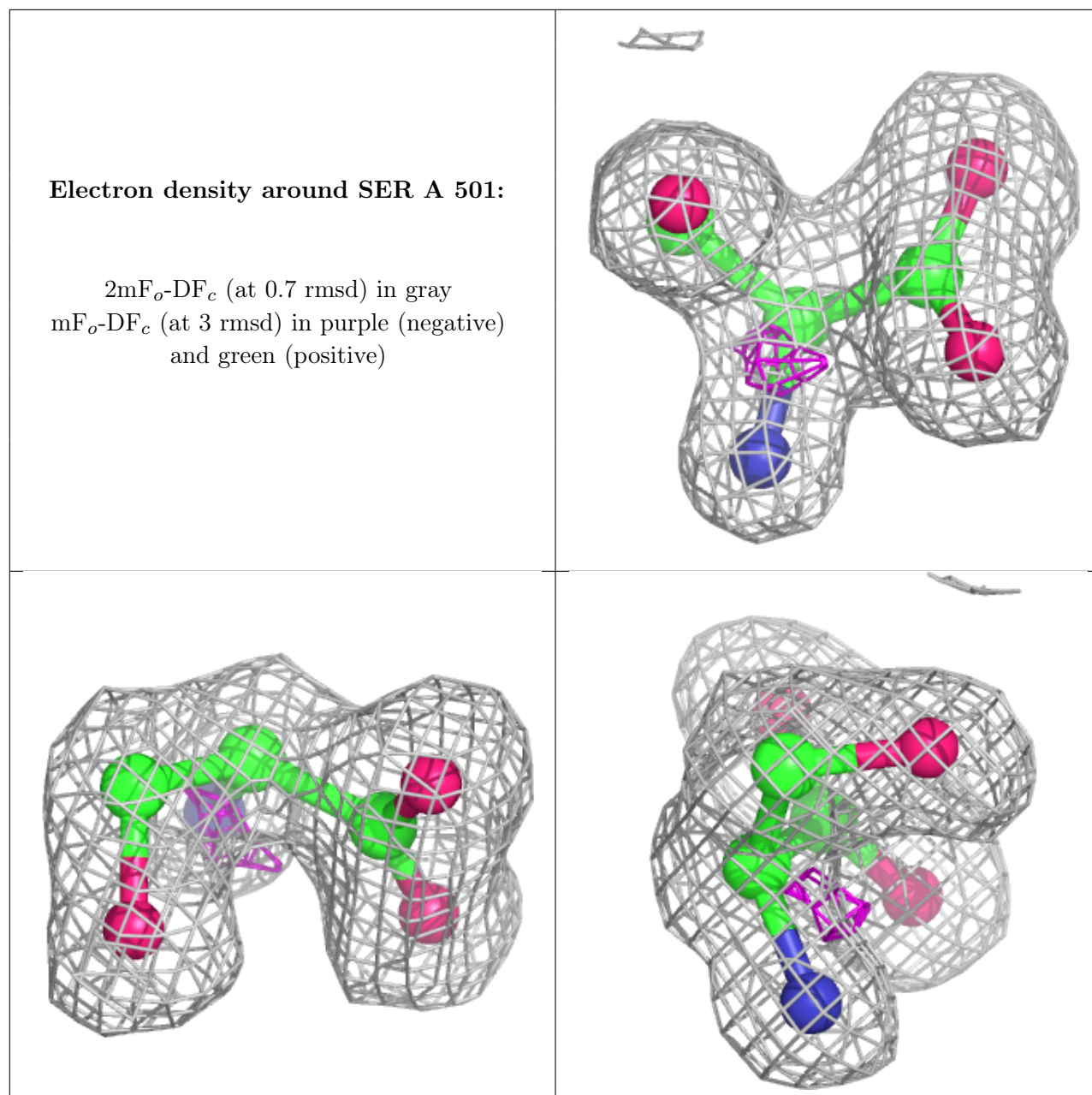
The following is a graphical depiction of the model fit to experimental electron density of all instances of the Ligand of Interest. In addition, ligands with molecular weight > 250 and outliers as shown on the geometry validation Tables will also be included. Each fit is shown from different orientation to approximate a three-dimensional view.



Electron density around KOU B 501:

$2mF_o-DF_c$ (at 0.7 rmsd) in gray
 mF_o-DF_c (at 3 rmsd) in purple (negative)
and green (positive)





6.5 Other polymers [i](#)

There are no such residues in this entry.