



Full wwPDB X-ray Structure Validation Report ⓘ

Jan 3, 2023 – 06:14 am GMT

PDB ID : 8BPY
Title : X-RAY STRUCTURE OF PDE9A IN COMPLEX WITH Inhibitor 13A
Authors : Steuber, H.
Deposited on : 2022-11-18
Resolution : 3.30 Å(reported)

This is a Full wwPDB X-ray Structure Validation Report for a publicly released PDB entry.

We welcome your comments at validation@mail.wwpdb.org

A user guide is available at

<https://www.wwpdb.org/validation/2017/XrayValidationReportHelp>

with specific help available everywhere you see the ⓘ symbol.

The types of validation reports are described at

<http://www.wwpdb.org/validation/2017/FAQs#types>.

The following versions of software and data (see [references ⓘ](#)) were used in the production of this report:

MolProbity : 4.02b-467
Mogul : 1.8.4, CSD as541be (2020)
Xtriage (Phenix) : 1.13
EDS : 2.31.3
buster-report : 1.1.7 (2018)
Percentile statistics : 20191225.v01 (using entries in the PDB archive December 25th 2019)
Refmac : 5.8.0158
CCP4 : 7.0.044 (Gargrove)
Ideal geometry (proteins) : Engh & Huber (2001)
Ideal geometry (DNA, RNA) : Parkinson et al. (1996)
Validation Pipeline (wwPDB-VP) : 2.31.3

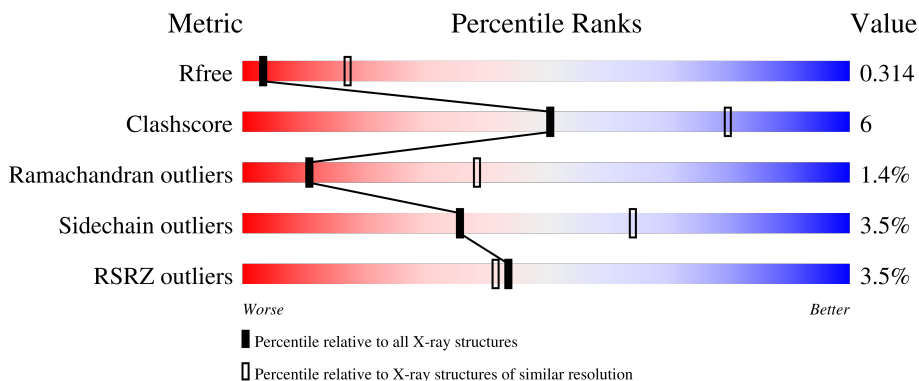
1 Overall quality at a glance

The following experimental techniques were used to determine the structure:

X-RAY DIFFRACTION

The reported resolution of this entry is 3.30 Å.

Percentile scores (ranging between 0-100) for global validation metrics of the entry are shown in the following graphic. The table shows the number of entries on which the scores are based.



Metric	Whole archive (#Entries)	Similar resolution (#Entries, resolution range(Å))
R_{free}	130704	1149 (3.34-3.26)
Clashscore	141614	1205 (3.34-3.26)
Ramachandran outliers	138981	1183 (3.34-3.26)
Sidechain outliers	138945	1182 (3.34-3.26)
RSRZ outliers	127900	1115 (3.34-3.26)

The table below summarises the geometric issues observed across the polymeric chains and their fit to the electron density. The red, orange, yellow and green segments of the lower bar indicate the fraction of residues that contain outliers for ≥ 3 , 2, 1 and 0 types of geometric quality criteria respectively. A grey segment represents the fraction of residues that are not modelled. The numeric value for each fraction is indicated below the corresponding segment, with a dot representing fractions $\leq 5\%$. The upper red bar (where present) indicates the fraction of residues that have poor fit to the electron density. The numeric value is given above the bar.

Mol	Chain	Length	Quality of chain
1	A	315	
1	B	315	

2 Entry composition [i](#)

There are 5 unique types of molecules in this entry. The entry contains 5201 atoms, of which 0 are hydrogens and 0 are deuteriums.

In the tables below, the ZeroOcc column contains the number of atoms modelled with zero occupancy, the AltConf column contains the number of residues with at least one atom in alternate conformation and the Trace column contains the number of residues modelled with at most 2 atoms.

- Molecule 1 is a protein called High affinity cGMP-specific 3',5'-cyclic phosphodiesterase 9A.

Mol	Chain	Residues	Atoms					ZeroOcc	AltConf	Trace
			Total	C	N	O	S			
1	A	315	2580	1651	428	471	30	0	0	0
1	B	315	2580	1651	428	471	30	0	0	0

- Molecule 2 is ZINC ION (three-letter code: ZN) (formula: Zn).

Mol	Chain	Residues	Atoms		ZeroOcc	AltConf
2	A	1	Total	Zn	1	0
			1	1		
2	B	1	Total	Zn	1	0
			1	1		

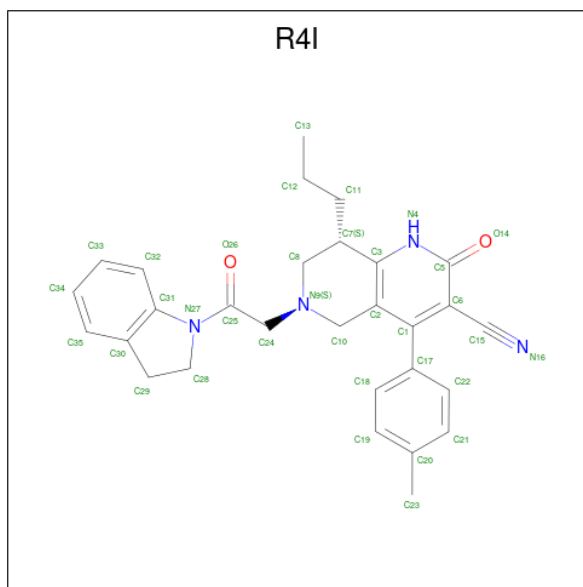
- Molecule 3 is MAGNESIUM ION (three-letter code: MG) (formula: Mg).

Mol	Chain	Residues	Atoms		ZeroOcc	AltConf
3	A	1	Total	Mg	1	0
			1	1		
3	B	1	Total	Mg	1	0
			1	1		

- Molecule 4 is SODIUM ION (three-letter code: NA) (formula: Na).

Mol	Chain	Residues	Atoms		ZeroOcc	AltConf
4	A	1	Total	Na	1	0
			1	1		
4	B	1	Total	Na	1	0
			1	1		

- Molecule 5 is (8 {S})-6-[2-(2,3-dihydroindol-1-yl)-2-oxidanylidene-ethyl]-4-(4-methylphenyl)-2-oxidanylidene-8-propyl-1,5,7,8-tetrahydro-1,6-naphthyridine-3-carbonitrile (three-letter code: R4I) (formula: C₂₉H₃₀N₄O₂) (labeled as "Ligand of Interest" by depositor).

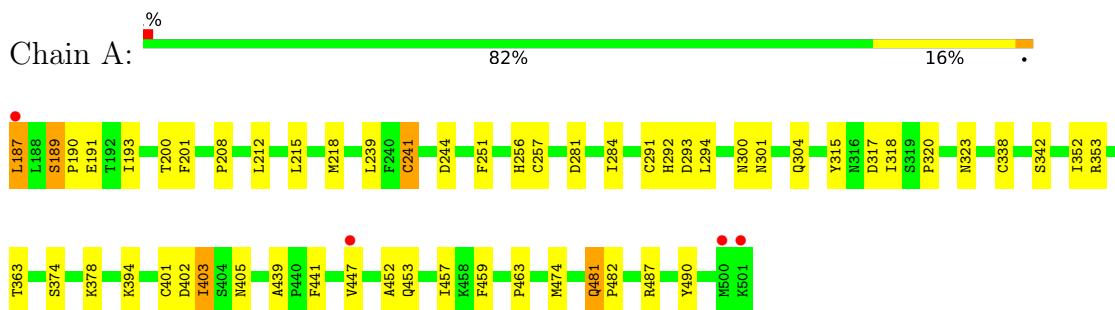


Mol	Chain	Residues	Atoms				ZeroOcc	AltConf
			Total	C	N	O		
5	A	1	35	29	4	2	0	0

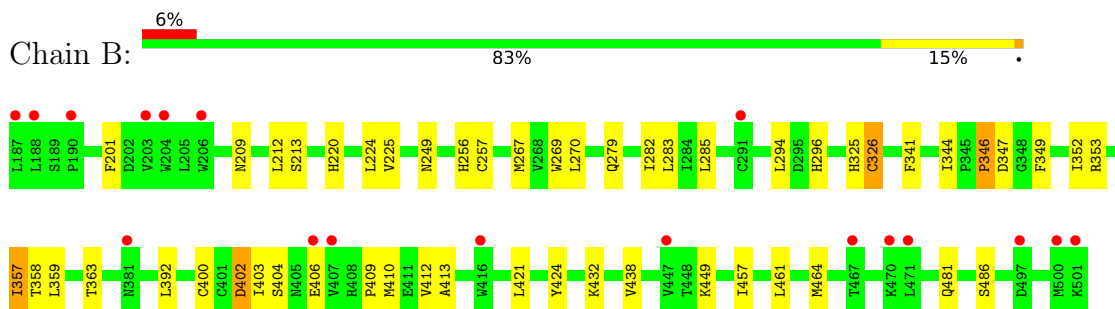
3 Residue-property plots [i](#)

These plots are drawn for all protein, RNA, DNA and oligosaccharide chains in the entry. The first graphic for a chain summarises the proportions of the various outlier classes displayed in the second graphic. The second graphic shows the sequence view annotated by issues in geometry and electron density. Residues are color-coded according to the number of geometric quality criteria for which they contain at least one outlier: green = 0, yellow = 1, orange = 2 and red = 3 or more. A red dot above a residue indicates a poor fit to the electron density ($RSRZ > 2$). Stretches of 2 or more consecutive residues without any outlier are shown as a green connector. Residues present in the sample, but not in the model, are shown in grey.

- Molecule 1: High affinity cGMP-specific 3',5'-cyclic phosphodiesterase 9A



- Molecule 1: High affinity cGMP-specific 3',5'-cyclic phosphodiesterase 9A



4 Data and refinement statistics

Property	Value	Source
Space group	I 4 2 2	Depositor
Cell constants a, b, c, α , β , γ	222.42Å 222.42Å 120.26Å 90.00° 90.00° 90.00°	Depositor
Resolution (Å)	49.74 – 3.30 49.74 – 3.30	Depositor EDS
% Data completeness (in resolution range)	99.6 (49.74-3.30) 99.6 (49.74-3.30)	Depositor EDS
R_{merge}	(Not available)	Depositor
R_{sym}	(Not available)	Depositor
$\langle I/\sigma(I) \rangle$ ¹	1.61 (at 3.33Å)	Xtrriage
Refinement program	REFMAC 5.8.0123	Depositor
R, R_{free}	0.246 , 0.312 0.256 , 0.314	Depositor DCC
R_{free} test set	1149 reflections (5.00%)	wwPDB-VP
Wilson B-factor (Å ²)	107.6	Xtrriage
Anisotropy	0.050	Xtrriage
Bulk solvent k_{sol} (e/Å ³), B_{sol} (Å ²)	0.31 , 80.8	EDS
L-test for twinning ²	$\langle L \rangle = 0.47$, $\langle L^2 \rangle = 0.30$	Xtrriage
Estimated twinning fraction	No twinning to report.	Xtrriage
F_o, F_c correlation	0.93	EDS
Total number of atoms	5201	wwPDB-VP
Average B, all atoms (Å ²)	133.0	wwPDB-VP

Xtrriage's analysis on translational NCS is as follows: *The largest off-origin peak in the Patterson function is 4.90% of the height of the origin peak. No significant pseudotranslation is detected.*

¹Intensities estimated from amplitudes.

²Theoretical values of $\langle |L| \rangle$, $\langle L^2 \rangle$ for acentric reflections are 0.5, 0.333 respectively for untwinned datasets, and 0.375, 0.2 for perfectly twinned datasets.

5 Model quality [i](#)

5.1 Standard geometry [i](#)

Bond lengths and bond angles in the following residue types are not validated in this section: NA, R4I, MG, ZN

The Z score for a bond length (or angle) is the number of standard deviations the observed value is removed from the expected value. A bond length (or angle) with $|Z| > 5$ is considered an outlier worth inspection. RMSZ is the root-mean-square of all Z scores of the bond lengths (or angles).

Mol	Chain	Bond lengths		Bond angles	
		RMSZ	# Z >5	RMSZ	# Z >5
1	A	0.58	1/2646 (0.0%)	0.78	3/3588 (0.1%)
1	B	0.58	1/2646 (0.0%)	0.77	1/3588 (0.0%)
All	All	0.58	2/5292 (0.0%)	0.78	4/7176 (0.1%)

Chiral center outliers are detected by calculating the chiral volume of a chiral center and verifying if the center is modelled as a planar moiety or with the opposite hand. A planarity outlier is detected by checking planarity of atoms in a peptide group, atoms in a mainchain group or atoms of a sidechain that are expected to be planar.

Mol	Chain	#Chirality outliers	#Planarity outliers
1	A	0	1

All (2) bond length outliers are listed below:

Mol	Chain	Res	Type	Atoms	Z	Observed(Å)	Ideal(Å)
1	B	402	ASP	CB-CG	6.04	1.64	1.51
1	A	189	SER	CA-CB	5.77	1.61	1.52

All (4) bond angle outliers are listed below:

Mol	Chain	Res	Type	Atoms	Z	Observed(°)	Ideal(°)
1	A	187	LEU	CB-CG-CD1	-8.81	96.02	111.00
1	B	402	ASP	CB-CG-OD1	8.05	125.55	118.30
1	A	353	ARG	NE-CZ-NH1	7.50	124.05	120.30
1	A	353	ARG	NE-CZ-NH2	-5.17	117.71	120.30

There are no chirality outliers.

All (1) planarity outliers are listed below:

Mol	Chain	Res	Type	Group
1	A	447	VAL	Peptide

5.2 Too-close contacts [i](#)

In the following table, the Non-H and H(model) columns list the number of non-hydrogen atoms and hydrogen atoms in the chain respectively. The H(added) column lists the number of hydrogen atoms added and optimized by MolProbity. The Clashes column lists the number of clashes within the asymmetric unit, whereas Symm-Clashes lists symmetry-related clashes.

Mol	Chain	Non-H	H(model)	H(added)	Clashes	Symm-Clashes
1	A	2580	0	2504	28	0
1	B	2580	0	2504	26	0
2	A	1	0	0	0	0
2	B	1	0	0	0	0
3	A	1	0	0	0	0
3	B	1	0	0	0	0
4	A	1	0	0	0	0
4	B	1	0	0	0	0
5	A	35	0	0	5	0
All	All	5201	0	5008	57	0

The all-atom clashscore is defined as the number of clashes found per 1000 atoms (including hydrogen atoms). The all-atom clashscore for this structure is 6.

All (57) close contacts within the same asymmetric unit are listed below, sorted by their clash magnitude.

Atom-1	Atom-2	Interatomic distance (Å)	Clash overlap (Å)
1:A:241:CYS:HG	1:A:338:CYS:HG	0.94	0.93
1:A:363:THR:HB	1:A:402:ASP:OD1	1.79	0.83
1:A:292:HIS:CD2	1:A:293:ASP:OD2	2.34	0.80
1:A:452:ALA:HB1	5:A:2004:R4I:C12	2.18	0.73
1:A:190:PRO:HA	1:A:193:ILE:HD12	1.83	0.59
1:A:241:CYS:CB	1:A:338:CYS:HG	2.16	0.58
1:A:292:HIS:CD2	1:A:293:ASP:CG	2.78	0.56
1:A:453:GLN:HG2	1:A:490:TYR:CE2	2.39	0.56
5:A:2004:R4I:C18	5:A:2004:R4I:C15	2.85	0.55
5:A:2004:R4I:C24	5:A:2004:R4I:C32	2.85	0.54
5:A:2004:R4I:C10	5:A:2004:R4I:C22	2.85	0.54
1:B:326:CYS:SG	1:B:357:ILE:HA	2.49	0.52
1:A:315:TYR:CE1	1:A:323:ASN:HB3	2.44	0.52
1:B:400:CYS:O	1:B:404:SER:HB3	2.09	0.52

Continued on next page...

Continued from previous page...

Atom-1	Atom-2	Interatomic distance (Å)	Clash overlap (Å)
1:A:301:ASN:OD1	1:A:320:PRO:HD2	2.09	0.52
1:B:357:ILE:O	1:B:358:THR:C	2.49	0.51
1:A:374:SER:O	1:A:378:LYS:HG2	2.11	0.50
1:A:284:ILE:HD11	1:A:352:ILE:HA	1.92	0.50
1:A:292:HIS:HD2	1:A:293:ASP:OD2	1.88	0.50
1:B:220:HIS:CE1	1:B:225:VAL:HG11	2.48	0.48
1:B:406:GLU:HA	1:B:413:ALA:HB1	1.96	0.47
1:A:251:PHE:CE2	1:A:256:HIS:CE1	3.02	0.47
1:B:294:LEU:O	1:B:325:HIS:ND1	2.43	0.47
1:A:291:CYS:HB3	1:A:294:LEU:HD12	1.97	0.47
1:B:249:ASN:ND2	1:B:296:HIS:O	2.47	0.46
1:B:256:HIS:NE2	1:B:402:ASP:OD1	2.48	0.46
1:B:432:LYS:HG3	1:B:438:VAL:HG21	1.97	0.46
1:A:403:ILE:HG13	1:A:403:ILE:O	2.15	0.46
1:A:441:PHE:CZ	5:A:2004:R4I:C28	2.99	0.46
1:A:459:PHE:O	1:A:463:PRO:HG2	2.15	0.46
1:B:256:HIS:CE1	1:B:402:ASP:OD1	2.68	0.46
1:B:341:PHE:CD1	1:B:344:ILE:HD12	2.51	0.46
1:B:457:ILE:HA	1:B:461:LEU:HD12	1.99	0.45
1:B:403:ILE:HD11	1:B:464:MET:CE	2.47	0.45
1:B:279:GLN:HA	1:B:282:ILE:HB	2.00	0.44
1:A:401:CYS:C	1:A:403:ILE:H	2.21	0.44
1:B:409:PRO:O	1:B:412:VAL:N	2.51	0.44
1:A:281:ASP:OD1	1:A:394:LYS:NZ	2.46	0.43
1:A:439:ALA:HB1	1:A:441:PHE:CE2	2.53	0.43
1:B:341:PHE:CE2	1:B:352:ILE:HG21	2.54	0.43
1:A:300:ASN:O	1:A:304:GLN:HG2	2.19	0.43
1:B:346:PRO:HA	1:B:349:PHE:HB3	2.01	0.43
1:B:349:PHE:O	1:B:353:ARG:N	2.50	0.43
1:B:269:TRP:O	1:B:270:LEU:C	2.57	0.42
1:A:401:CYS:C	1:A:403:ILE:N	2.73	0.42
1:A:457:ILE:HG21	1:A:487:ARG:HB2	2.02	0.41
1:B:285:LEU:HD23	1:B:359:LEU:HD11	2.00	0.41
1:B:421:LEU:HA	1:B:424:TYR:HB2	2.02	0.41
1:B:341:PHE:CZ	1:B:352:ILE:HG21	2.55	0.41
1:A:215:LEU:HD23	1:A:218:MET:SD	2.61	0.41
1:A:402:ASP:C	1:A:403:ILE:HG23	2.41	0.41
1:A:481:GLN:HB3	1:A:482:PRO:HD3	2.02	0.40
1:B:224:LEU:HD22	1:B:283:LEU:HB2	2.02	0.40
1:B:267:MET:HA	1:B:270:LEU:HB3	2.04	0.40
1:B:285:LEU:HD23	1:B:359:LEU:CD1	2.51	0.40

Continued on next page...

Continued from previous page...

Atom-1	Atom-2	Interatomic distance (Å)	Clash overlap (Å)
1:A:212:LEU:HD22	1:A:239:LEU:HB3	2.03	0.40
1:B:209:ASN:HA	1:B:212:LEU:HD12	2.03	0.40

There are no symmetry-related clashes.

5.3 Torsion angles [i](#)

5.3.1 Protein backbone [i](#)

In the following table, the Percentiles column shows the percent Ramachandran outliers of the chain as a percentile score with respect to all X-ray entries followed by that with respect to entries of similar resolution.

The Analysed column shows the number of residues for which the backbone conformation was analysed, and the total number of residues.

Mol	Chain	Analysed	Favoured	Allowed	Outliers	Percentiles	
1	A	313/315 (99%)	290 (93%)	17 (5%)	6 (2%)	8	34
1	B	313/315 (99%)	279 (89%)	31 (10%)	3 (1%)	15	46
All	All	626/630 (99%)	569 (91%)	48 (8%)	9 (1%)	11	38

All (9) Ramachandran outliers are listed below:

Mol	Chain	Res	Type
1	A	201	PHE
1	A	317	ASP
1	B	201	PHE
1	B	357	ILE
1	A	405	ASN
1	B	449	LYS
1	A	200	THR
1	A	403	ILE
1	A	208	PRO

5.3.2 Protein sidechains [i](#)

In the following table, the Percentiles column shows the percent sidechain outliers of the chain as a percentile score with respect to all X-ray entries followed by that with respect to entries of similar resolution.

The Analysed column shows the number of residues for which the sidechain conformation was analysed, and the total number of residues.

Mol	Chain	Analysed	Rotameric	Outliers	Percentiles	
1	A	288/292 (99%)	278 (96%)	10 (4%)	36	64
1	B	288/292 (99%)	278 (96%)	10 (4%)	36	64
All	All	576/584 (99%)	556 (96%)	20 (4%)	36	64

All (20) residues with a non-rotameric sidechain are listed below:

Mol	Chain	Res	Type
1	A	187	LEU
1	A	189	SER
1	A	191	GLU
1	A	241	CYS
1	A	244	ASP
1	A	257	CYS
1	A	318	ILE
1	A	342	SER
1	A	474	MET
1	A	481	GLN
1	B	213	SER
1	B	257	CYS
1	B	326	CYS
1	B	346	PRO
1	B	347	ASP
1	B	363	THR
1	B	392	LEU
1	B	410	MET
1	B	481	GLN
1	B	486	SER

Sometimes sidechains can be flipped to improve hydrogen bonding and reduce clashes. All (4) such sidechains are listed below:

Mol	Chain	Res	Type
1	A	252	HIS
1	A	256	HIS
1	B	252	HIS
1	B	301	ASN

5.3.3 RNA [i](#)

There are no RNA molecules in this entry.

5.4 Non-standard residues in protein, DNA, RNA chains [i](#)

There are no non-standard protein/DNA/RNA residues in this entry.

5.5 Carbohydrates [i](#)

There are no monosaccharides in this entry.

5.6 Ligand geometry [i](#)

Of 7 ligands modelled in this entry, 6 are monoatomic - leaving 1 for Mogul analysis.

In the following table, the Counts columns list the number of bonds (or angles) for which Mogul statistics could be retrieved, the number of bonds (or angles) that are observed in the model and the number of bonds (or angles) that are defined in the Chemical Component Dictionary. The Link column lists molecule types, if any, to which the group is linked. The Z score for a bond length (or angle) is the number of standard deviations the observed value is removed from the expected value. A bond length (or angle) with $|Z| > 2$ is considered an outlier worth inspection. RMSZ is the root-mean-square of all Z scores of the bond lengths (or angles).

Mol	Type	Chain	Res	Link	Bond lengths			Bond angles		
					Counts	RMSZ	# Z > 2	Counts	RMSZ	# Z > 2
5	R4I	A	2004	-	37,39,39	1.53	5 (13%)	45,56,56	1.91	9 (20%)

In the following table, the Chirals column lists the number of chiral outliers, the number of chiral centers analysed, the number of these observed in the model and the number defined in the Chemical Component Dictionary. Similar counts are reported in the Torsion and Rings columns. '-' means no outliers of that kind were identified.

Mol	Type	Chain	Res	Link	Chirals	Torsions	Rings
5	R4I	A	2004	-	-	2/15/38/38	0/5/5/5

All (5) bond length outliers are listed below:

Mol	Chain	Res	Type	Atoms	Z	Observed(Å)	Ideal(Å)
5	A	2004	R4I	C17-C1	-5.64	1.39	1.49
5	A	2004	R4I	C6-C5	-3.95	1.38	1.44
5	A	2004	R4I	C31-N27	-3.86	1.32	1.39

Continued on next page...

Continued from previous page...

Mol	Chain	Res	Type	Atoms	Z	Observed(Å)	Ideal(Å)
5	A	2004	R4I	C25-N27	-2.59	1.31	1.36
5	A	2004	R4I	C24-C25	-2.00	1.50	1.53

All (9) bond angle outliers are listed below:

Mol	Chain	Res	Type	Atoms	Z	Observed(°)	Ideal(°)
5	A	2004	R4I	C24-C25-N27	6.02	123.08	116.53
5	A	2004	R4I	C6-C5-N4	5.25	119.55	114.90
5	A	2004	R4I	C28-N27-C31	4.03	112.17	109.22
5	A	2004	R4I	C7-C8-N9	3.64	114.17	110.06
5	A	2004	R4I	C25-C24-N9	-3.45	103.50	112.91
5	A	2004	R4I	C5-N4-C3	-3.28	119.33	124.87
5	A	2004	R4I	C29-C28-N27	-2.50	102.76	104.94
5	A	2004	R4I	C11-C7-C3	-2.29	108.65	111.77
5	A	2004	R4I	C32-C31-C30	-2.09	119.45	121.60

There are no chirality outliers.

All (2) torsion outliers are listed below:

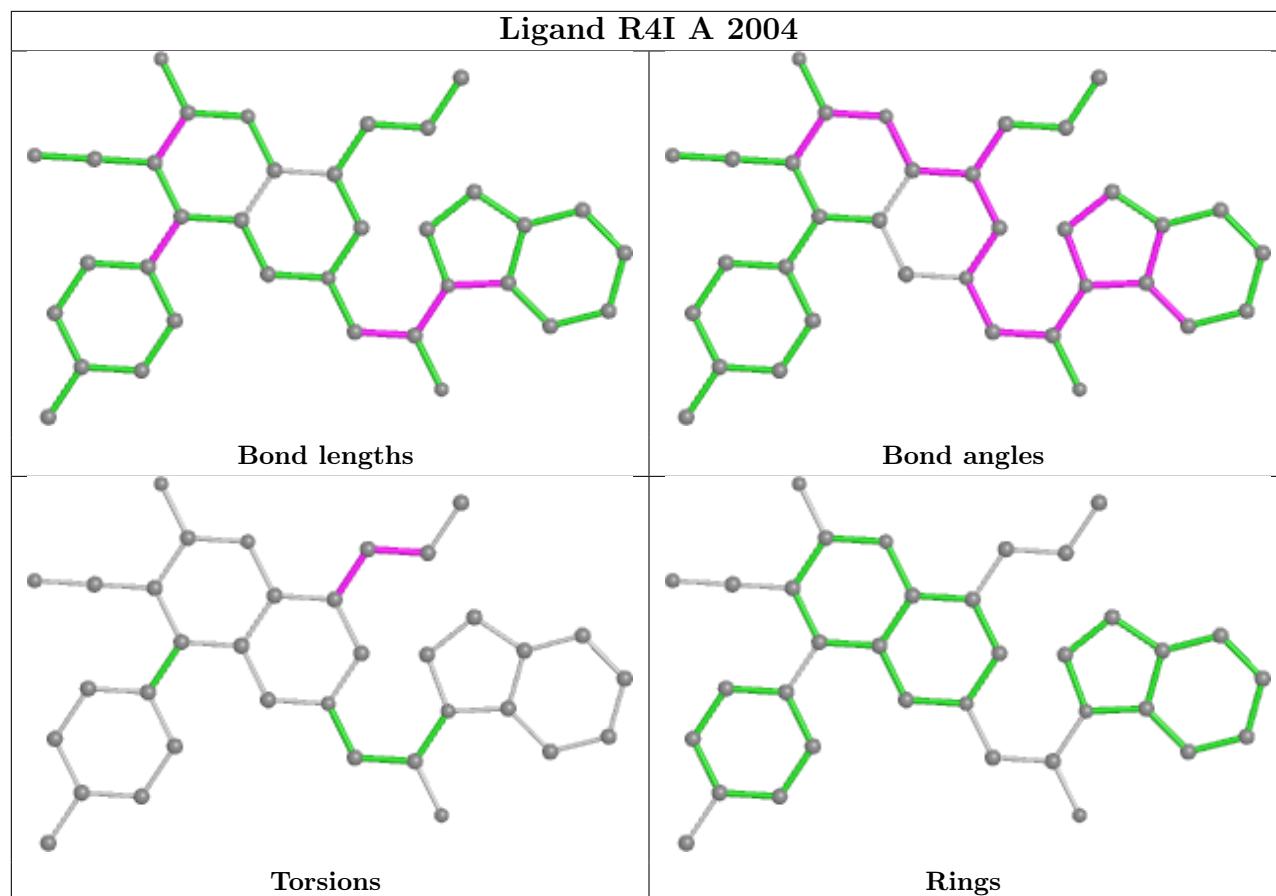
Mol	Chain	Res	Type	Atoms
5	A	2004	R4I	C12-C11-C7-C8
5	A	2004	R4I	C7-C11-C12-C13

There are no ring outliers.

1 monomer is involved in 5 short contacts:

Mol	Chain	Res	Type	Clashes	Symm-Clashes
5	A	2004	R4I	5	0

The following is a two-dimensional graphical depiction of Mogul quality analysis of bond lengths, bond angles, torsion angles, and ring geometry for all instances of the Ligand of Interest. In addition, ligands with molecular weight > 250 and outliers as shown on the validation Tables will also be included. For torsion angles, if less than 5% of the Mogul distribution of torsion angles is within 10 degrees of the torsion angle in question, then that torsion angle is considered an outlier. Any bond that is central to one or more torsion angles identified as an outlier by Mogul will be highlighted in the graph. For rings, the root-mean-square deviation (RMSD) between the ring in question and similar rings identified by Mogul is calculated over all ring torsion angles. If the average RMSD is greater than 60 degrees and the minimal RMSD between the ring in question and any Mogul-identified rings is also greater than 60 degrees, then that ring is considered an outlier. The outliers are highlighted in purple. The color gray indicates Mogul did not find sufficient equivalents in the CSD to analyse the geometry.



5.7 Other polymers [i](#)

There are no such residues in this entry.

5.8 Polymer linkage issues [i](#)

There are no chain breaks in this entry.

6 Fit of model and data

6.1 Protein, DNA and RNA chains

In the following table, the column labelled ‘#RSRZ > 2’ contains the number (and percentage) of RSRZ outliers, followed by percent RSRZ outliers for the chain as percentile scores relative to all X-ray entries and entries of similar resolution. The OWAB column contains the minimum, median, 95th percentile and maximum values of the occupancy-weighted average B-factor per residue. The column labelled ‘Q < 0.9’ lists the number of (and percentage) of residues with an average occupancy less than 0.9.

Mol	Chain	Analysed	<RSRZ>	#RSRZ>2	OWAB(Å ²)	Q<0.9
1	A	315/315 (100%)	-0.23	4 (1%) 77 77	62, 104, 161, 219	0
1	B	315/315 (100%)	0.33	18 (5%) 23 23	97, 159, 201, 224	0
All	All	630/630 (100%)	0.05	22 (3%) 44 42	62, 133, 196, 224	0

All (22) RSRZ outliers are listed below:

Mol	Chain	Res	Type	RSRZ
1	A	501	LYS	6.4
1	B	501	LYS	5.5
1	B	467	THR	5.2
1	B	187	LEU	4.8
1	A	500	MET	4.5
1	B	188	LEU	4.5
1	B	470	LYS	3.9
1	B	500	MET	3.7
1	B	190	PRO	3.4
1	B	203	VAL	3.4
1	B	471	LEU	3.3
1	B	204	TRP	3.1
1	B	206	TRP	3.1
1	B	447	VAL	2.9
1	B	497	ASP	2.9
1	B	291	CYS	2.8
1	A	187	LEU	2.5
1	B	381	ASN	2.5
1	B	407	VAL	2.3
1	A	447	VAL	2.2
1	B	406	GLU	2.1
1	B	416	TRP	2.1

6.2 Non-standard residues in protein, DNA, RNA chains [i](#)

There are no non-standard protein/DNA/RNA residues in this entry.

6.3 Carbohydrates [i](#)

There are no monosaccharides in this entry.

6.4 Ligands [i](#)

LIGAND-RSR INFOmissingINFO

6.5 Other polymers [i](#)

There are no such residues in this entry.