



# Full wwPDB X-ray Structure Validation Report ⓘ

Mar 9, 2018 – 02:55 pm GMT

PDB ID : 5BSR  
Title : Crystal structure of 4-coumarate:CoA ligase complexed with adenosine monophosphate and Coenzyme A  
Authors : Li, Z.; Nair, S.K.  
Deposited on : 2015-06-02  
Resolution : 1.50 Å(reported)

This is a Full wwPDB X-ray Structure Validation Report for a publicly released PDB entry.

We welcome your comments at [validation@mail.wwpdb.org](mailto:validation@mail.wwpdb.org)

A user guide is available at

<https://www.wwpdb.org/validation/2017/XrayValidationReportHelp>

with specific help available everywhere you see the ⓘ symbol.

---

The following versions of software and data (see [references ⓘ](#)) were used in the production of this report:

MolProbity : 4.02b-467  
Mogul : 1.7.3 (157068), CSD as539be (2018)  
Xtriage (Phenix) : 1.13  
EDS : trunk30967  
Percentile statistics : 20171227.v01 (using entries in the PDB archive December 27th 2017)  
Refmac : 5.8.0158  
CCP4 : 7.0 (Gargrove)  
Ideal geometry (proteins) : Engh & Huber (2001)  
Ideal geometry (DNA, RNA) : Parkinson et al. (1996)  
Validation Pipeline (wwPDB-VP) : trunk30967

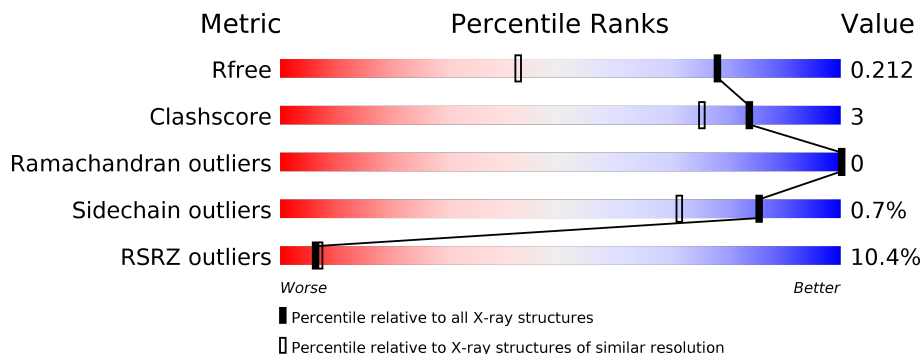
# 1 Overall quality at a glance

The following experimental techniques were used to determine the structure:

*X-RAY DIFFRACTION*

The reported resolution of this entry is 1.50 Å.

Percentile scores (ranging between 0-100) for global validation metrics of the entry are shown in the following graphic. The table shows the number of entries on which the scores are based.



Metric	Whole archive (#Entries)	Similar resolution (#Entries, resolution range(Å))
$R_{free}$	111664	2534 (1.50-1.50)
Clashscore	122126	2727 (1.50-1.50)
Ramachandran outliers	120053	2661 (1.50-1.50)
Sidechain outliers	120020	2659 (1.50-1.50)
RSRZ outliers	108989	2481 (1.50-1.50)

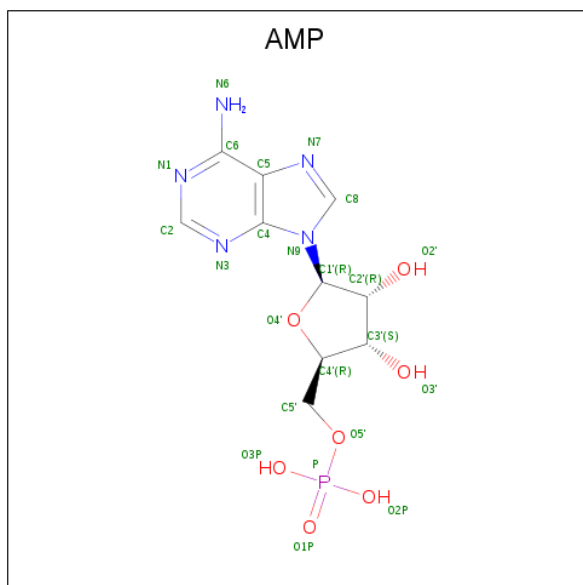
The table below summarises the geometric issues observed across the polymeric chains and their fit to the electron density. The red, orange, yellow and green segments on the lower bar indicate the fraction of residues that contain outliers for  $\geq 3$ , 2, 1 and 0 types of geometric quality criteria. A grey segment represents the fraction of residues that are not modelled. The numeric value for each fraction is indicated below the corresponding segment, with a dot representing fractions  $\leq 5\%$ . The upper red bar (where present) indicates the fraction of residues that have poor fit to the electron density. The numeric value is given above the bar.

Mol	Chain	Length	Quality of chain
1	A	542	

The following table lists non-polymeric compounds, carbohydrate monomers and non-standard residues in protein, DNA, RNA chains that are outliers for geometric or electron-density-fit criteria:

Mol	Type	Chain	Res	Chirality	Geometry	Clashes	Electron density
4	GOL	A	605	-	-	-	X





Mol	Chain	Residues	Atoms					ZeroOcc	AltConf
			Total	C	N	O	P		
3	A	1	23	10	5	7	1	0	0

- Molecule 4 is GLYCEROL (three-letter code: GOL) (formula: C<sub>3</sub>H<sub>8</sub>O<sub>3</sub>).



Mol	Chain	Residues	Atoms			ZeroOcc	AltConf
			Total	C	O		
4	A	1	6	3	3	0	0
4	A	1	6	3	3	0	0
4	A	1	6	3	3	0	0

*Continued on next page...*

*Continued from previous page...*

Mol	Chain	Residues	Atoms			ZeroOcc	AltConf
4	A	1	Total	C	O	0	0
			6	3	3		

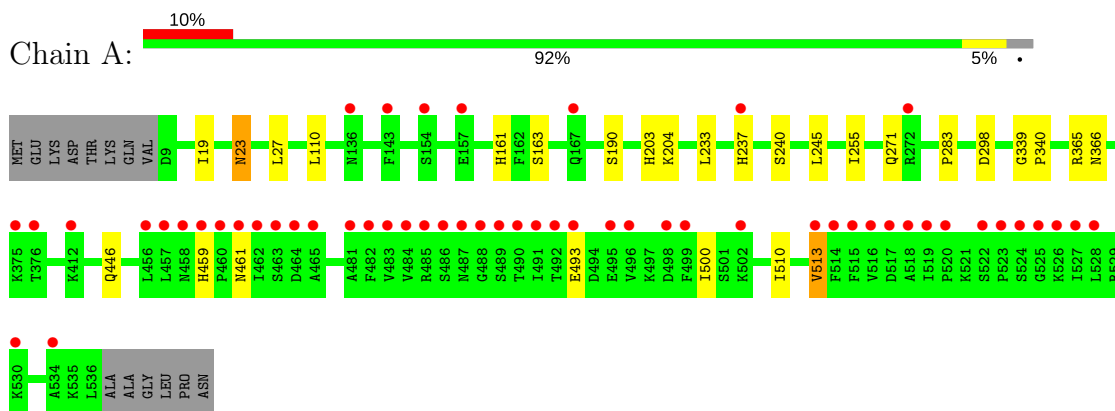
- Molecule 5 is water.

Mol	Chain	Residues	Atoms		ZeroOcc	AltConf
5	A	527	Total	O	0	0
			527	527		

### 3 Residue-property plots [i](#)

These plots are drawn for all protein, RNA and DNA chains in the entry. The first graphic for a chain summarises the proportions of the various outlier classes displayed in the second graphic. The second graphic shows the sequence view annotated by issues in geometry and electron density. Residues are color-coded according to the number of geometric quality criteria for which they contain at least one outlier: green = 0, yellow = 1, orange = 2 and red = 3 or more. A red dot above a residue indicates a poor fit to the electron density ( $RSRZ > 2$ ). Stretches of 2 or more consecutive residues without any outlier are shown as a green connector. Residues present in the sample, but not in the model, are shown in grey.

- Molecule 1: 4-coumarate–CoA ligase 2



## 4 Data and refinement statistics

Property	Value	Source
Space group	P 21 21 21	Depositor
Cell constants a, b, c, $\alpha$ , $\beta$ , $\gamma$	69.90Å 82.09Å 97.13Å 90.00° 90.00° 90.00°	Depositor
Resolution (Å)	25.00 – 1.50 37.81 – 1.50	Depositor EDS
% Data completeness (in resolution range)	97.2 (25.00-1.50) 96.9 (37.81-1.50)	Depositor EDS
$R_{merge}$	0.07	Depositor
$R_{sym}$	(Not available)	Depositor
$\langle I/\sigma(I) \rangle$ <sup>1</sup>	1.72 (at 1.50Å)	Xtrriage
Refinement program	REFMAC 5.7.0029	Depositor
R, $R_{free}$	0.188 , 0.212 0.189 , 0.212	Depositor DCC
$R_{free}$ test set	4386 reflections (5.01%)	wwPDB-VP
Wilson B-factor (Å <sup>2</sup> )	17.0	Xtrriage
Anisotropy	0.586	Xtrriage
Bulk solvent $k_{sol}$ (e/Å <sup>3</sup> ), $B_{sol}$ (Å <sup>2</sup> )	0.37 , 41.5	EDS
L-test for twinning <sup>2</sup>	$\langle  L  \rangle = 0.47$ , $\langle L^2 \rangle = 0.30$	Xtrriage
Estimated twinning fraction	No twinning to report.	Xtrriage
$F_o, F_c$ correlation	0.96	EDS
Total number of atoms	4705	wwPDB-VP
Average B, all atoms (Å <sup>2</sup> )	22.0	wwPDB-VP

Xtrriage's analysis on translational NCS is as follows: *The largest off-origin peak in the Patterson function is 3.99% of the height of the origin peak. No significant pseudotranslation is detected.*

<sup>1</sup>Intensities estimated from amplitudes.

<sup>2</sup>Theoretical values of  $\langle |L| \rangle$ ,  $\langle L^2 \rangle$  for acentric reflections are 0.5, 0.333 respectively for untwinned datasets, and 0.375, 0.2 for perfectly twinned datasets.

## 5 Model quality [i](#)

### 5.1 Standard geometry [i](#)

Bond lengths and bond angles in the following residue types are not validated in this section: COA, GOL, AMP

The Z score for a bond length (or angle) is the number of standard deviations the observed value is removed from the expected value. A bond length (or angle) with  $|Z| > 5$  is considered an outlier worth inspection. RMSZ is the root-mean-square of all Z scores of the bond lengths (or angles).

Mol	Chain	Bond lengths		Bond angles	
		RMSZ	# Z  >5	RMSZ	# Z  >5
1	A	0.30	0/4171	0.52	0/5660

There are no bond length outliers.

There are no bond angle outliers.

There are no chirality outliers.

There are no planarity outliers.

### 5.2 Too-close contacts [i](#)

In the following table, the Non-H and H(model) columns list the number of non-hydrogen atoms and hydrogen atoms in the chain respectively. The H(added) column lists the number of hydrogen atoms added and optimized by MolProbity. The Clashes column lists the number of clashes within the asymmetric unit, whereas Symm-Clashes lists symmetry related clashes.

Mol	Chain	Non-H	H(model)	H(added)	Clashes	Symm-Clashes
1	A	4083	0	4154	22	0
2	A	48	0	32	4	0
3	A	23	0	12	0	0
4	A	24	0	32	0	0
5	A	527	0	0	2	0
All	All	4705	0	4230	22	0

The all-atom clashscore is defined as the number of clashes found per 1000 atoms (including hydrogen atoms). The all-atom clashscore for this structure is 3.

All (22) close contacts within the same asymmetric unit are listed below, sorted by their clash magnitude.



Atom-1	Atom-2	Interatomic distance (Å)	Clash overlap (Å)
1:A:27:LEU:H	1:A:203:HIS:HD2	1.08	0.97
1:A:19:ILE:H	1:A:366:ASN:HD21	1.18	0.90
1:A:271:GLN:HE21	1:A:298:ASP:H	1.25	0.83
1:A:237[B]:HIS:CG	2:A:601:COA:H32	2.17	0.79
1:A:27:LEU:H	1:A:203:HIS:CD2	2.01	0.72
1:A:190:SER:H	1:A:446:GLN:HE22	1.37	0.72
1:A:237[B]:HIS:CD2	2:A:601:COA:H32	2.30	0.66
1:A:271:GLN:NE2	1:A:298:ASP:H	2.00	0.57
1:A:203:HIS:HE1	5:A:792:HOH:O	1.87	0.56
1:A:339:GLY:N	1:A:340:PRO:HA	2.21	0.55
1:A:459:HIS:HD2	1:A:461:ASN:H	1.54	0.55
1:A:493:GLU:HG3	1:A:513:VAL:HG22	1.89	0.54
1:A:237[B]:HIS:HE1	5:A:736:HOH:O	1.91	0.53
1:A:500:ILE:HG13	1:A:510:ILE:HD12	1.92	0.50
1:A:237[B]:HIS:CD2	2:A:601:COA:C3P	2.96	0.49
1:A:233:LEU:HB2	1:A:240:SER:OG	2.12	0.48
1:A:23:ASN:HB2	1:A:204:LYS:HG3	1.95	0.48
1:A:161:HIS:CD2	1:A:163:SER:H	2.32	0.47
1:A:283:PRO:HB2	2:A:601:COA:H132	1.98	0.46
1:A:245:LEU:HD12	1:A:255:ILE:HD13	1.99	0.44
1:A:365:ARG:HG3	1:A:366:ASN:HD22	1.84	0.43
1:A:161:HIS:HD2	1:A:163:SER:H	1.68	0.42

There are no symmetry-related clashes.

## 5.3 Torsion angles [i](#)

### 5.3.1 Protein backbone [i](#)

In the following table, the Percentiles column shows the percent Ramachandran outliers of the chain as a percentile score with respect to all X-ray entries followed by that with respect to entries of similar resolution.

The Analysed column shows the number of residues for which the backbone conformation was analysed, and the total number of residues.

Mol	Chain	Analysed	Favoured	Allowed	Outliers	Percentiles
1	A	527/542 (97%)	517 (98%)	10 (2%)	0	<b>100</b> <b>100</b>

There are no Ramachandran outliers to report.

### 5.3.2 Protein sidechains [i](#)

In the following table, the Percentiles column shows the percent sidechain outliers of the chain as a percentile score with respect to all X-ray entries followed by that with respect to entries of similar resolution.

The Analysed column shows the number of residues for which the sidechain conformation was analysed, and the total number of residues.

Mol	Chain	Analysed	Rotameric	Outliers	Percentiles
1	A	453/463 (98%)	450 (99%)	3 (1%)	85 71

All (3) residues with a non-rotameric sidechain are listed below:

Mol	Chain	Res	Type
1	A	23	ASN
1	A	110	LEU
1	A	513	VAL

Some sidechains can be flipped to improve hydrogen bonding and reduce clashes. All (6) such sidechains are listed below:

Mol	Chain	Res	Type
1	A	161	HIS
1	A	203	HIS
1	A	271	GLN
1	A	366	ASN
1	A	446	GLN
1	A	459	HIS

### 5.3.3 RNA [i](#)

There are no RNA molecules in this entry.

## 5.4 Non-standard residues in protein, DNA, RNA chains [i](#)

There are no non-standard protein/DNA/RNA residues in this entry.

## 5.5 Carbohydrates [i](#)

There are no carbohydrates in this entry.

## 5.6 Ligand geometry

6 ligands are modelled in this entry.

In the following table, the Counts columns list the number of bonds (or angles) for which Mogul statistics could be retrieved, the number of bonds (or angles) that are observed in the model and the number of bonds (or angles) that are defined in the Chemical Component Dictionary. The Link column lists molecule types, if any, to which the group is linked. The Z score for a bond length (or angle) is the number of standard deviations the observed value is removed from the expected value. A bond length (or angle) with  $|Z| > 2$  is considered an outlier worth inspection. RMSZ is the root-mean-square of all Z scores of the bond lengths (or angles).

Mol	Type	Chain	Res	Link	Bond lengths			Bond angles		
					Counts	RMSZ	# Z  > 2	Counts	RMSZ	# Z  > 2
2	COA	A	601	-	41,50,50	0.77	1 (2%)	51,75,75	3.07	11 (21%)
3	AMP	A	602	-	22,25,25	0.80	0	23,38,38	1.93	2 (8%)
4	GOL	A	603	-	5,5,5	0.18	0	5,5,5	0.63	0
4	GOL	A	604	-	5,5,5	0.25	0	5,5,5	0.28	0
4	GOL	A	605	-	5,5,5	0.23	0	5,5,5	0.26	0
4	GOL	A	606	-	5,5,5	0.21	0	5,5,5	0.62	0

In the following table, the Chirals column lists the number of chiral outliers, the number of chiral centers analysed, the number of these observed in the model and the number defined in the Chemical Component Dictionary. Similar counts are reported in the Torsion and Rings columns. '-' means no outliers of that kind were identified.

Mol	Type	Chain	Res	Link	Chirals	Torsions	Rings
2	COA	A	601	-	-	0/44/64/64	0/3/3/3
3	AMP	A	602	-	-	0/6/26/26	0/3/3/3
4	GOL	A	603	-	-	0/4/4/4	0/0/0/0
4	GOL	A	604	-	-	0/4/4/4	0/0/0/0
4	GOL	A	605	-	-	0/4/4/4	0/0/0/0
4	GOL	A	606	-	-	0/4/4/4	0/0/0/0

All (1) bond length outliers are listed below:

Mol	Chain	Res	Type	Atoms	Z	Observed(Å)	Ideal(Å)
2	A	601	COA	O4B-C1B	2.14	1.44	1.41

All (13) bond angle outliers are listed below:

Mol	Chain	Res	Type	Atoms	Z	Observed(°)	Ideal(°)
2	A	601	COA	CDP-CBP-CAP	-10.22	91.10	108.82
2	A	601	COA	CEP-CBP-CAP	-9.45	92.43	108.82

*Continued on next page...*

Continued from previous page...

Mol	Chain	Res	Type	Atoms	Z	Observed(°)	Ideal(°)
2	A	601	COA	N3A-C2A-N1A	-9.42	120.80	128.86
3	A	602	AMP	N3-C2-N1	-8.12	121.91	128.86
2	A	601	COA	C7P-C6P-C5P	-2.55	108.12	112.31
3	A	602	AMP	C4-C5-N7	-2.33	107.16	109.41
2	A	601	COA	C6P-C7P-N8P	-2.07	107.66	111.85
2	A	601	COA	O9A-P3B-O8A	2.03	115.64	107.59
2	A	601	COA	C7P-N8P-C9P	2.96	128.03	122.59
2	A	601	COA	C3P-N4P-C5P	4.41	131.21	122.85
2	A	601	COA	CEP-CBP-CDP	5.88	121.43	109.16
2	A	601	COA	CEP-CBP-CCP	6.41	118.68	108.23
2	A	601	COA	CDP-CBP-CCP	7.07	119.77	108.23

There are no chirality outliers.

There are no torsion outliers.

There are no ring outliers.

1 monomer is involved in 4 short contacts:

Mol	Chain	Res	Type	Clashes	Symm-Clashes
2	A	601	COA	4	0

## 5.7 Other polymers [i](#)

There are no such residues in this entry.

## 5.8 Polymer linkage issues [i](#)

There are no chain breaks in this entry.

## 6 Fit of model and data

### 6.1 Protein, DNA and RNA chains

In the following table, the column labelled ‘#RSRZ > 2’ contains the number (and percentage) of RSRZ outliers, followed by percent RSRZ outliers for the chain as percentile scores relative to all X-ray entries and entries of similar resolution. The OWAB column contains the minimum, median, 95<sup>th</sup> percentile and maximum values of the occupancy-weighted average B-factor per residue. The column labelled ‘Q < 0.9’ lists the number of (and percentage) of residues with an average occupancy less than 0.9.

Mol	Chain	Analysed	<RSRZ>	#RSRZ>2	OWAB(Å <sup>2</sup> )	Q<0.9
1	A	528/542 (97%)	0.54	55 (10%) <b>6</b> <b>7</b>	12, 18, 40, 62	0

All (55) RSRZ outliers are listed below:

Mol	Chain	Res	Type	RSRZ
1	A	488	GLY	14.2
1	A	490	THR	9.3
1	A	523	PRO	7.9
1	A	518	ALA	7.6
1	A	487	ASN	6.9
1	A	489	SER	6.3
1	A	516	VAL	6.1
1	A	534	ALA	5.8
1	A	517	ASP	5.6
1	A	484	VAL	5.5
1	A	525	GLY	5.5
1	A	143	PHE	5.5
1	A	462	ILE	5.4
1	A	520	PRO	5.1
1	A	486	SER	4.8
1	A	485	ARG	4.8
1	A	463	SER	4.8
1	A	515	PHE	4.7
1	A	157	GLU	4.6
1	A	526	LYS	4.5
1	A	491	ILE	4.5
1	A	464	ASP	4.3
1	A	514	PHE	4.1
1	A	492	THR	4.1
1	A	375	LYS	4.1
1	A	461	ASN	4.1
1	A	524	SER	3.9

*Continued on next page...*

*Continued from previous page...*

Mol	Chain	Res	Type	RSRZ
1	A	513	VAL	3.8
1	A	457	LEU	3.8
1	A	459	HIS	3.8
1	A	495	GLU	3.5
1	A	272	ARG	3.5
1	A	519	ILE	3.5
1	A	522	SER	3.4
1	A	482	PHE	3.3
1	A	167	GLN	3.3
1	A	496	VAL	3.1
1	A	528	LEU	3.0
1	A	412	LYS	2.8
1	A	456	LEU	2.8
1	A	493	GLU	2.8
1	A	460	PRO	2.8
1	A	154	SER	2.7
1	A	237[A]	HIS	2.7
1	A	499	PHE	2.7
1	A	527	ILE	2.6
1	A	136	ASN	2.5
1	A	483	VAL	2.5
1	A	465	ALA	2.4
1	A	530	LYS	2.3
1	A	498	ASP	2.3
1	A	376	THR	2.2
1	A	458	ASN	2.2
1	A	502	LYS	2.1
1	A	481	ALA	2.0

## 6.2 Non-standard residues in protein, DNA, RNA chains [i](#)

There are no non-standard protein/DNA/RNA residues in this entry.

## 6.3 Carbohydrates [i](#)

There are no carbohydrates in this entry.

## 6.4 Ligands [i](#)

In the following table, the Atoms column lists the number of modelled atoms in the group and the number defined in the chemical component dictionary. The B-factors column lists the minimum,

median, 95<sup>th</sup> percentile and maximum values of B factors of atoms in the group. The column labelled 'Q< 0.9' lists the number of atoms with occupancy less than 0.9.

Mol	Type	Chain	Res	Atoms	RSCC	RSR	B-factors(Å <sup>2</sup> )	Q<0.9
4	GOL	A	605	6/6	0.23	0.57	95,96,96,96	0
4	GOL	A	603	6/6	0.81	0.17	25,26,26,27	0
2	COA	A	601	48/48	0.87	0.16	21,27,43,44	0
4	GOL	A	606	6/6	0.96	0.08	17,18,18,18	0
4	GOL	A	604	6/6	0.96	0.09	18,18,18,19	0
3	AMP	A	602	23/23	0.98	0.08	13,14,14,15	0

## 6.5 Other polymers [i](#)

There are no such residues in this entry.