



wwPDB X-ray Structure Validation Summary Report ⓘ

Dec 12, 2023 – 10:38 pm GMT

PDB ID : 4BTW
Title : Crystal structure of human vascular adhesion protein-1 in complex with pyridazinone inhibitors
Authors : Bligt-Linden, E.; Pihlavisto, M.; Szatmari, I.; Otwinowski, Z.; Smith, D.J.; Lazar, L.; Fulop, F.; Salminen, T.A.
Deposited on : 2013-06-19
Resolution : 2.80 Å(reported)

This is a wwPDB X-ray Structure Validation Summary Report for a publicly released PDB entry.

We welcome your comments at validation@mail.wwpdb.org

A user guide is available at

<https://www.wwpdb.org/validation/2017/XrayValidationReportHelp>

with specific help available everywhere you see the ⓘ symbol.

The types of validation reports are described at

<http://www.wwpdb.org/validation/2017/FAQs#types>.

The following versions of software and data (see [references ⓘ](#)) were used in the production of this report:

MolProbity : 4.02b-467
Mogul : 1.8.4, CSD as541be (2020)
Xtriage (Phenix) : 1.13
EDS : 2.36
buster-report : 1.1.7 (2018)
Percentile statistics : 20191225.v01 (using entries in the PDB archive December 25th 2019)
Refmac : 5.8.0158
CCP4 : 7.0.044 (Gargrove)
Ideal geometry (proteins) : Engh & Huber (2001)
Ideal geometry (DNA, RNA) : Parkinson et al. (1996)
Validation Pipeline (wwPDB-VP) : 2.36

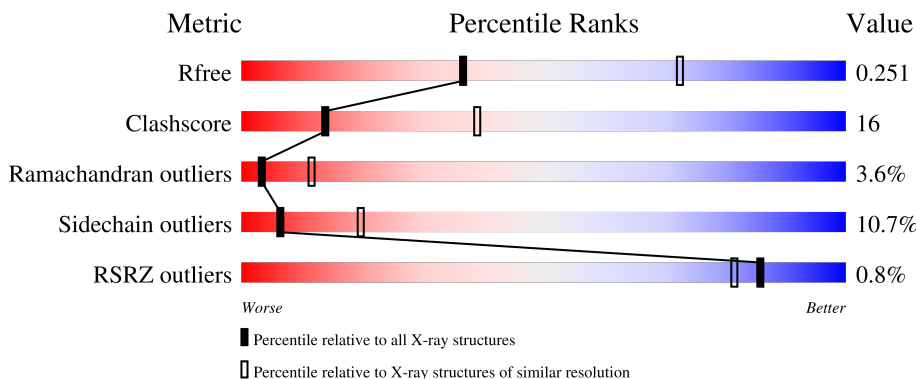
1 Overall quality at a glance

The following experimental techniques were used to determine the structure:

X-RAY DIFFRACTION

The reported resolution of this entry is 2.80 Å.

Percentile scores (ranging between 0-100) for global validation metrics of the entry are shown in the following graphic. The table shows the number of entries on which the scores are based.



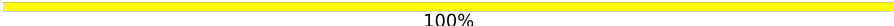

Metric	Whole archive (#Entries)	Similar resolution (#Entries, resolution range(Å))
R_{free}	130704	3140 (2.80-2.80)
Clashscore	141614	3569 (2.80-2.80)
Ramachandran outliers	138981	3498 (2.80-2.80)
Sidechain outliers	138945	3500 (2.80-2.80)
RSRZ outliers	127900	3078 (2.80-2.80)

The table below summarises the geometric issues observed across the polymeric chains and their fit to the electron density. The red, orange, yellow and green segments of the lower bar indicate the fraction of residues that contain outliers for ≥ 3 , 2, 1 and 0 types of geometric quality criteria respectively. A grey segment represents the fraction of residues that are not modelled. The numeric value for each fraction is indicated below the corresponding segment, with a dot representing fractions $\leq 5\%$. The upper red bar (where present) indicates the fraction of residues that have poor fit to the electron density. The numeric value is given above the bar.

Mol	Chain	Length	Quality of chain
1	A	737	 60% 30% 6%
1	B	737	 59% 30% 6%
2	C	3	 67% 33%
3	D	2	 100%

Continued on next page...

Continued from previous page...

Mol	Chain	Length	Quality of chain
3	F	2	 100%
4	E	5	 40% 60%

The following table lists non-polymeric compounds, carbohydrate monomers and non-standard residues in protein, DNA, RNA chains that are outliers for geometric or electron-density-fit criteria:

Mol	Type	Chain	Res	Chirality	Geometry	Clashes	Electron density
7	NAG	A	1770	X	-	-	-
7	NAG	A	1771	X	-	-	-
7	NAG	B	1774	X	-	-	X

2 Entry composition i

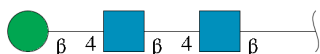
There are 9 unique types of molecules in this entry. The entry contains 11573 atoms, of which 0 are hydrogens and 0 are deuteriums.

In the tables below, the ZeroOcc column contains the number of atoms modelled with zero occupancy, the AltConf column contains the number of residues with at least one atom in alternate conformation and the Trace column contains the number of residues modelled with at most 2 atoms.

- Molecule 1 is a protein called MEMBRANE PRIMARY AMINE OXIDASE.

Mol	Chain	Residues	Atoms					ZeroOcc	AltConf	Trace
			Total	C	N	O	S			
1	A	711	Total 5609	C 3599	N 970	O 1020	S 20	0	0	0
1	B	705	Total 5562	C 3571	N 959	O 1012	S 20	0	0	0

- Molecule 2 is an oligosaccharide called beta-D-mannopyranose-(1-4)-2-acetamido-2-deoxy-beta-D-glucopyranose-(1-4)-2-acetamido-2-deoxy-beta-D-glucopyranose.



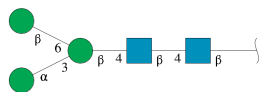
Mol	Chain	Residues	Atoms				ZeroOcc	AltConf	Trace
			Total	C	N	O			
2	C	3	Total 39	C 22	N 2	O 15	0	0	0

- Molecule 3 is an oligosaccharide called 2-acetamido-2-deoxy-beta-D-glucopyranose-(1-4)-2-acetamido-2-deoxy-beta-D-glucopyranose.



Mol	Chain	Residues	Atoms				ZeroOcc	AltConf	Trace
			Total	C	N	O			
3	D	2	Total 28	C 16	N 2	O 10	0	0	0
3	F	2	Total 28	C 16	N 2	O 10	0	0	0

- Molecule 4 is an oligosaccharide called alpha-D-mannopyranose-(1-3)-[beta-D-mannopyranose-(1-6)]beta-D-mannopyranose-(1-4)-2-acetamido-2-deoxy-beta-D-glucopyranose-(1-4)-2-acetamido-2-deoxy-beta-D-glucopyranose.



Mol	Chain	Residues	Atoms				ZeroOcc	AltConf	Trace
			Total	C	N	O			
4	E	5	61	34	2	25	0	0	0

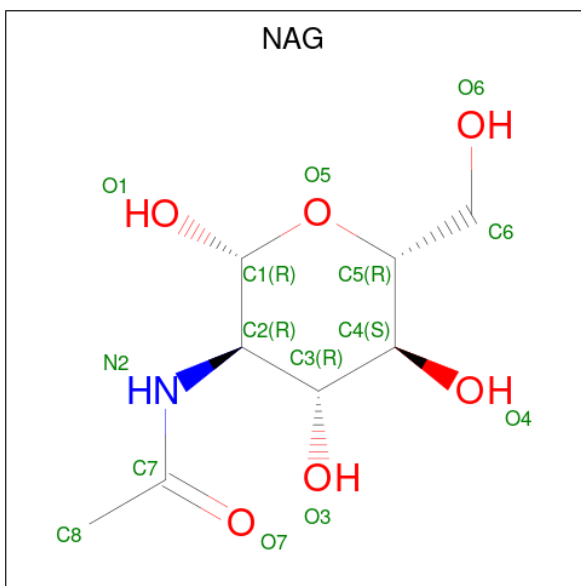
- Molecule 5 is COPPER (II) ION (three-letter code: CU) (formula: Cu).

Mol	Chain	Residues	Atoms		ZeroOcc	AltConf
			Total	Cu		
5	A	1	1	1	0	0
5	B	1	1	1	0	0

- Molecule 6 is CALCIUM ION (three-letter code: CA) (formula: Ca).

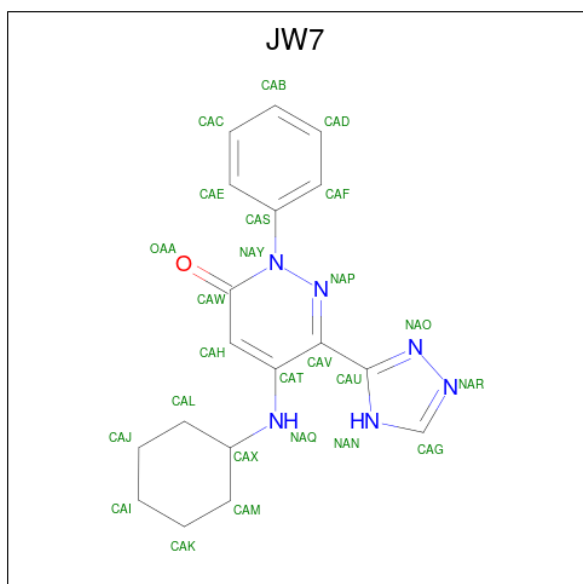
Mol	Chain	Residues	Atoms		ZeroOcc	AltConf
			Total	Ca		
6	A	2	2	2	0	0
6	B	2	2	2	0	0

- Molecule 7 is 2-acetamido-2-deoxy-beta-D-glucopyranose (three-letter code: NAG) (formula: C₈H₁₅NO₆).



Mol	Chain	Residues	Atoms				ZeroOcc	AltConf
7	A	1	Total	C	N	O	0	0
			14	8	1	5		
7	A	1	Total	C	N	O	0	0
			14	8	1	5		
7	B	1	Total	C	N	O	0	0
			14	8	1	5		
7	B	1	Total	C	N	O	0	0
			14	8	1	5		
7	B	1	Total	C	N	O	0	0
			14	8	1	5		

- Molecule 8 is 5-(cyclohexylamino)-2-phenyl-6-(1H-1,2,4-triazol-5-yl)-3(2H)-pyridazinone (three-letter code: JW7) (formula: C₁₈H₂₀N₆O).



Mol	Chain	Residues	Atoms				ZeroOcc	AltConf
8	A	1	Total	C	N	O	0	0
			25	18	6	1		
8	B	1	Total	C	N	O	0	0
			25	18	6	1		

- Molecule 9 is water.

Mol	Chain	Residues	Atoms		ZeroOcc	AltConf
9	A	64	Total	O	0	0
			64	64		

Continued on next page...

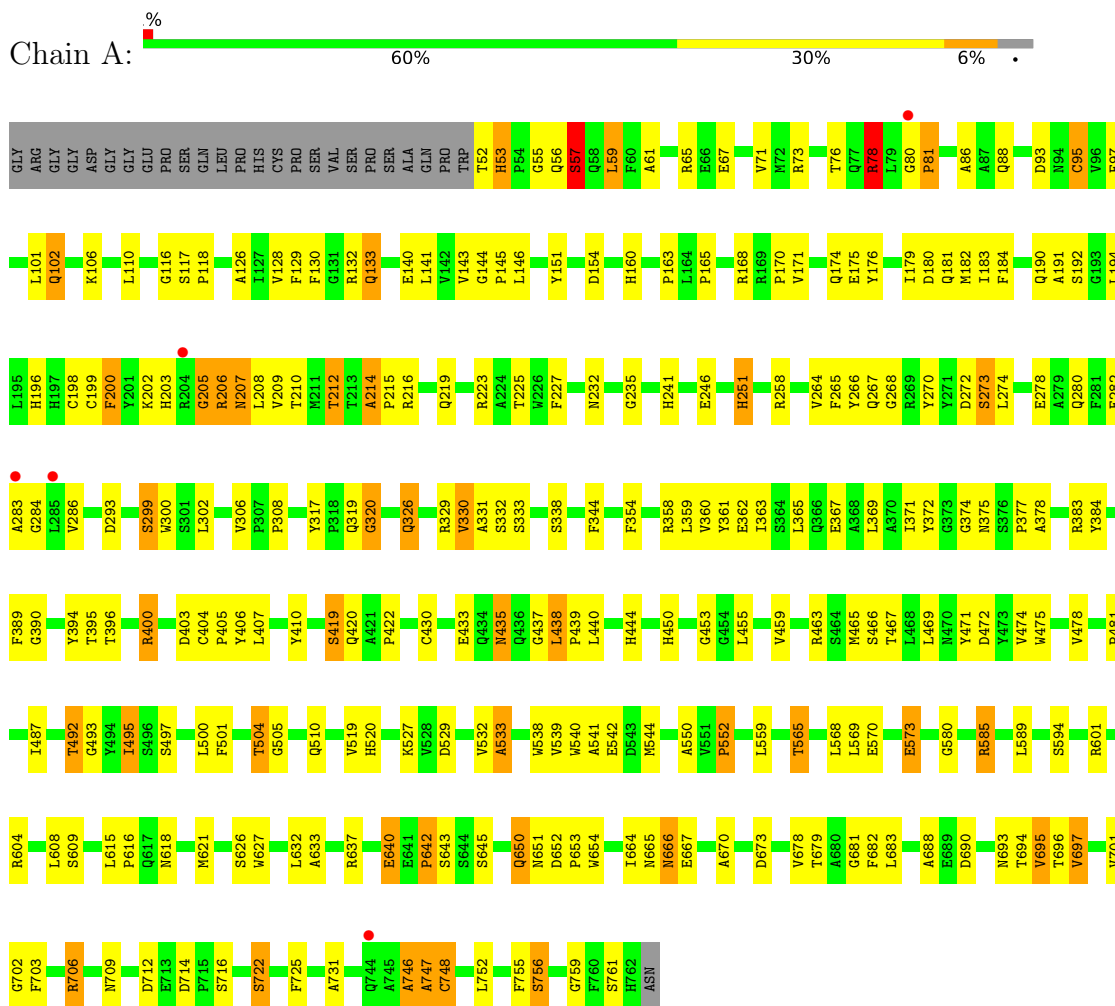
Continued from previous page...

Mol	Chain	Residues	Atoms		ZeroOcc	AltConf
9	B	42	Total	O	0	0
			42	42		

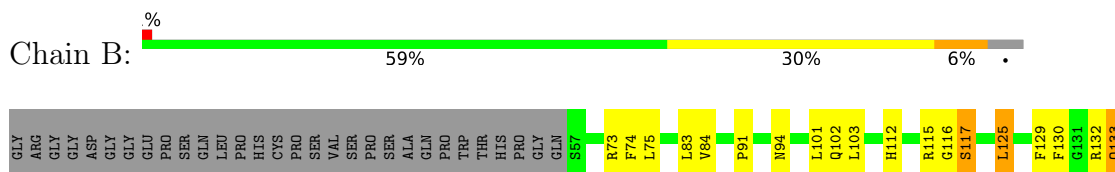
3 Residue-property plots i

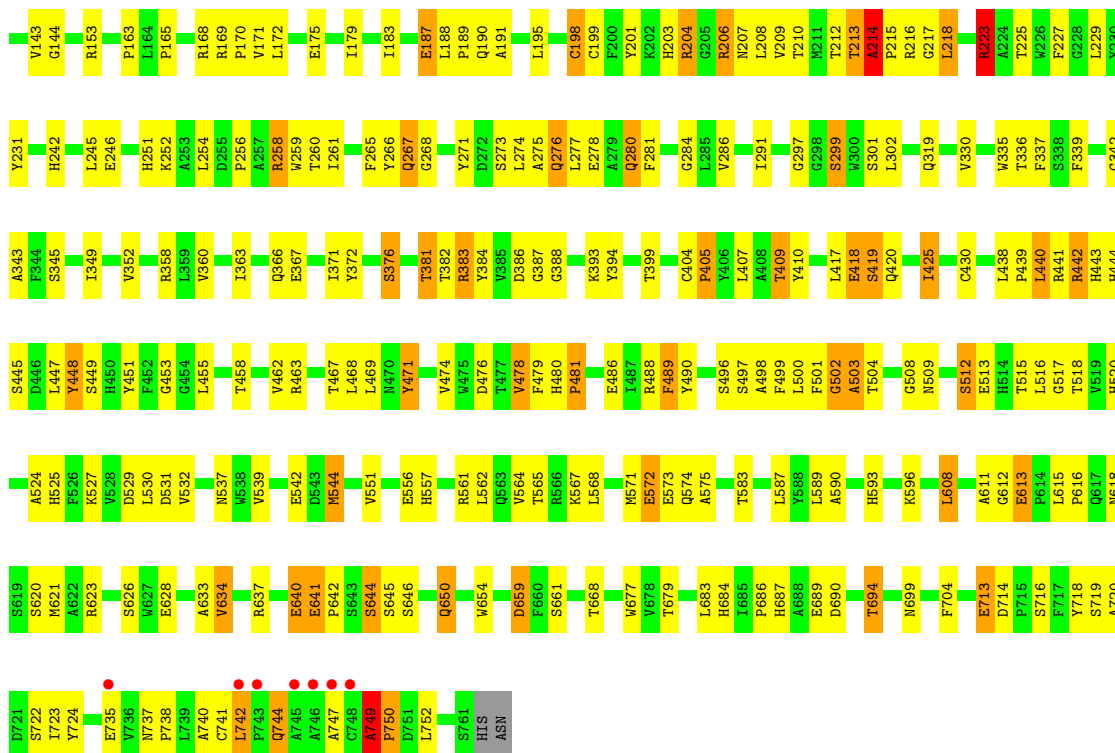
These plots are drawn for all protein, RNA, DNA and oligosaccharide chains in the entry. The first graphic for a chain summarises the proportions of the various outlier classes displayed in the second graphic. The second graphic shows the sequence view annotated by issues in geometry and electron density. Residues are color-coded according to the number of geometric quality criteria for which they contain at least one outlier: green = 0, yellow = 1, orange = 2 and red = 3 or more. A red dot above a residue indicates a poor fit to the electron density ($RSRZ > 2$). Stretches of 2 or more consecutive residues without any outlier are shown as a green connector. Residues present in the sample, but not in the model, are shown in grey.

• Molecule 1: MEMBRANE PRIMARY AMINE OXIDASE



• Molecule 1: MEMBRANE PRIMARY AMINE OXIDASE





- Molecule 2: beta-D-mannopyranose-(1-4)-2-acetamido-2-deoxy-beta-D-glucopyranose-(1-4)-2-acetamido-2-deoxy-beta-D-glucopyranose

Chain C: 67% 33%

MAG1
MAG2
BNA3

- Molecule 3: 2-acetamido-2-deoxy-beta-D-glucopyranose-(1-4)-2-acetamido-2-deoxy-beta-D-glucopyranose

Chain D: 100%

MAG1
MAG2

- Molecule 3: 2-acetamido-2-deoxy-beta-D-glucopyranose-(1-4)-2-acetamido-2-deoxy-beta-D-glucopyranose

Chain F: 100%

MAG1
MAG2

- Molecule 4: alpha-D-mannopyranose-(1-3)-[beta-D-mannopyranose-(1-6)]beta-D-mannopyranose-(1-4)-2-acetamido-2-deoxy-beta-D-glucopyranose-(1-4)-2-acetamido-2-deoxy-beta-D-glucopyranose

Chain E:



4 Data and refinement statistics

Property	Value	Source
Space group	P 65 2 2	Depositor
Cell constants a, b, c, α , β , γ	226.47Å 226.47Å 219.25Å 90.00° 90.00° 120.00°	Depositor
Resolution (Å)	49.39 – 2.80 49.34 – 2.80	Depositor EDS
% Data completeness (in resolution range)	77.9 (49.39-2.80) 77.9 (49.34-2.80)	Depositor EDS
R_{merge}	0.32	Depositor
R_{sym}	(Not available)	Depositor
$\langle I/\sigma(I) \rangle$ ¹	1.63 (at 2.81Å)	Xtrriage
Refinement program	REFMAC 5.7.0032	Depositor
R, R_{free}	0.205 , 0.260 0.199 , 0.251	Depositor DCC
R_{free} test set	3176 reflections (5.00%)	wwPDB-VP
Wilson B-factor (Å ²)	53.3	Xtrriage
Anisotropy	0.531	Xtrriage
Bulk solvent k_{sol} (e/Å ³), B_{sol} (Å ²)	0.30 , 43.1	EDS
L-test for twinning ²	$\langle L \rangle = 0.44$, $\langle L^2 \rangle = 0.26$	Xtrriage
Estimated twinning fraction	No twinning to report.	Xtrriage
F_o, F_c correlation	0.92	EDS
Total number of atoms	11573	wwPDB-VP
Average B, all atoms (Å ²)	62.0	wwPDB-VP

Xtrriage's analysis on translational NCS is as follows: *The largest off-origin peak in the Patterson function is 2.51% of the height of the origin peak. No significant pseudotranslation is detected.*

¹Intensities estimated from amplitudes.

²Theoretical values of $\langle |L| \rangle$, $\langle L^2 \rangle$ for acentric reflections are 0.5, 0.333 respectively for untwinned datasets, and 0.375, 0.2 for perfectly twinned datasets.

5 Model quality [i](#)

5.1 Standard geometry [i](#)

Bond lengths and bond angles in the following residue types are not validated in this section: JW7, CU, MAN, BMA, NAG, CA, TPQ

The Z score for a bond length (or angle) is the number of standard deviations the observed value is removed from the expected value. A bond length (or angle) with $|Z| > 5$ is considered an outlier worth inspection. RMSZ is the root-mean-square of all Z scores of the bond lengths (or angles).

Mol	Chain	Bond lengths		Bond angles	
		RMSZ	# $ Z > 5$	RMSZ	# $ Z > 5$
1	A	0.73	1/5774 (0.0%)	0.95	6/7874 (0.1%)
1	B	0.73	2/5724 (0.0%)	0.93	8/7805 (0.1%)
All	All	0.73	3/11498 (0.0%)	0.94	14/15679 (0.1%)

Chiral center outliers are detected by calculating the chiral volume of a chiral center and verifying if the center is modelled as a planar moiety or with the opposite hand. A planarity outlier is detected by checking planarity of atoms in a peptide group, atoms in a mainchain group or atoms of a sidechain that are expected to be planar.

Mol	Chain	#Chirality outliers	#Planarity outliers
1	A	0	3
1	B	0	4
All	All	0	7

All (3) bond length outliers are listed below:

Mol	Chain	Res	Type	Atoms	Z	Observed(Å)	Ideal(Å)
1	B	641	GLU	CG-CD	6.26	1.61	1.51
1	B	641	GLU	CD-OE2	5.39	1.31	1.25
1	A	540	TRP	CB-CG	-5.39	1.40	1.50

The worst 5 of 14 bond angle outliers are listed below:

Mol	Chain	Res	Type	Atoms	Z	Observed(°)	Ideal(°)
1	B	223	ARG	NE-CZ-NH1	7.22	123.91	120.30
1	A	78	ARG	NE-CZ-NH1	6.41	123.51	120.30
1	A	529	ASP	CB-CG-OD2	-6.30	112.63	118.30
1	B	531	ASP	CB-CG-OD1	5.96	123.66	118.30
1	B	223	ARG	NE-CZ-NH2	-5.91	117.34	120.30

There are no chirality outliers.

5 of 7 planarity outliers are listed below:

Mol	Chain	Res	Type	Group
1	A	198	CYS	Peptide
1	A	205	GLY	Peptide
1	A	437	GLY	Peptide
1	B	213	THR	Peptide
1	B	214	ALA	Peptide

5.2 Too-close contacts

In the following table, the Non-H and H(model) columns list the number of non-hydrogen atoms and hydrogen atoms in the chain respectively. The H(added) column lists the number of hydrogen atoms added and optimized by MolProbity. The Clashes column lists the number of clashes within the asymmetric unit, whereas Symm-Clashes lists symmetry-related clashes.

Mol	Chain	Non-H	H(model)	H(added)	Clashes	Symm-Clashes
1	A	5609	0	5351	171	1
1	B	5562	0	5313	197	0
2	C	39	0	34	1	0
3	D	28	0	25	0	0
3	F	28	0	25	0	0
4	E	61	0	52	3	0
5	A	1	0	0	0	0
5	B	1	0	0	0	0
6	A	2	0	0	0	0
6	B	2	0	0	0	0
7	A	28	0	26	0	0
7	B	56	0	52	2	0
8	A	25	0	20	4	0
8	B	25	0	20	6	0
9	A	64	0	0	1	0
9	B	42	0	0	8	0
All	All	11573	0	10918	353	1

The all-atom clashscore is defined as the number of clashes found per 1000 atoms (including hydrogen atoms). The all-atom clashscore for this structure is 16.

The worst 5 of 353 close contacts within the same asymmetric unit are listed below, sorted by their clash magnitude.

Atom-1	Atom-2	Interatomic distance (Å)	Clash overlap (Å)
1:A:367:GLU:OE2	1:A:645:SER:OG	1.75	1.04
1:A:492:THR:HG21	1:B:441:ARG:HA	1.42	1.01
1:A:80:GLY:O	1:A:81:PRO:O	1.90	0.90
1:B:620:SER:HG	1:B:654:TRP:HD1	1.11	0.90
1:A:495:ILE:HB	9:A:2046:HOH:O	1.70	0.89

All (1) symmetry-related close contacts are listed below. The label for Atom-2 includes the symmetry operator and encoded unit-cell translations to be applied.

Atom-1	Atom-2	Interatomic distance (Å)	Clash overlap (Å)
1:A:326:GLN:OE1	1:A:326:GLN:OE1[10_665]	1.91	0.29

5.3 Torsion angles [i](#)

5.3.1 Protein backbone [i](#)

In the following table, the Percentiles column shows the percent Ramachandran outliers of the chain as a percentile score with respect to all X-ray entries followed by that with respect to entries of similar resolution.

The Analysed column shows the number of residues for which the backbone conformation was analysed, and the total number of residues.

Mol	Chain	Analysed	Favoured	Allowed	Outliers	Percentiles	
1	A	708/737 (96%)	599 (85%)	82 (12%)	27 (4%)	3	10
1	B	702/737 (95%)	607 (86%)	71 (10%)	24 (3%)	3	13
All	All	1410/1474 (96%)	1206 (86%)	153 (11%)	51 (4%)	3	11

5 of 51 Ramachandran outliers are listed below:

Mol	Chain	Res	Type
1	A	81	PRO
1	A	116	GLY
1	A	206	ARG
1	A	214	ALA
1	A	267	GLN

5.3.2 Protein sidechains [i](#)

In the following table, the Percentiles column shows the percent sidechain outliers of the chain as a percentile score with respect to all X-ray entries followed by that with respect to entries of similar resolution.

The Analysed column shows the number of residues for which the sidechain conformation was analysed, and the total number of residues.

Mol	Chain	Analysed	Rotameric	Outliers	Percentiles	
1	A	590/610 (97%)	530 (90%)	60 (10%)	7	22
1	B	585/610 (96%)	519 (89%)	66 (11%)	6	18
All	All	1175/1220 (96%)	1049 (89%)	126 (11%)	6	20

5 of 126 residues with a non-rotameric sidechain are listed below:

Mol	Chain	Res	Type
1	A	748	CYS
1	B	626	SER
1	B	207	ASN
1	B	613	GLU
1	B	659	ASP

Sometimes sidechains can be flipped to improve hydrogen bonding and reduce clashes. All (4) such sidechains are listed below:

Mol	Chain	Res	Type
1	A	53	HIS
1	A	102	GLN
1	B	112	HIS
1	B	593	HIS

5.3.3 RNA [i](#)

There are no RNA molecules in this entry.

5.4 Non-standard residues in protein, DNA, RNA chains [i](#)

2 non-standard protein/DNA/RNA residues are modelled in this entry.

In the following table, the Counts columns list the number of bonds (or angles) for which Mogul statistics could be retrieved, the number of bonds (or angles) that are observed in the model and the number of bonds (or angles) that are defined in the Chemical Component Dictionary. The Link column lists molecule types, if any, to which the group is linked. The Z score for a bond

length (or angle) is the number of standard deviations the observed value is removed from the expected value. A bond length (or angle) with $|Z| > 2$ is considered an outlier worth inspection. RMSZ is the root-mean-square of all Z scores of the bond lengths (or angles).

Mol	Type	Chain	Res	Link	Bond lengths			Bond angles		
					Counts	RMSZ	# Z > 2	Counts	RMSZ	# Z > 2
1	TPQ	B	471	1	13,14,15	1.48	2 (15%)	15,19,21	1.78	3 (20%)
1	TPQ	A	471	1	13,14,15	1.58	2 (15%)	15,19,21	1.67	3 (20%)

In the following table, the Chirals column lists the number of chiral outliers, the number of chiral centers analysed, the number of these observed in the model and the number defined in the Chemical Component Dictionary. Similar counts are reported in the Torsion and Rings columns. '-' means no outliers of that kind were identified.

Mol	Type	Chain	Res	Link	Chirals	Torsions	Rings
1	TPQ	B	471	1	-	2/5/22/24	0/1/1/1
1	TPQ	A	471	1	-	0/5/22/24	0/1/1/1

All (4) bond length outliers are listed below:

Mol	Chain	Res	Type	Atoms	Z	Observed(Å)	Ideal(Å)
1	A	471	TPQ	C3-C4	3.79	1.41	1.35
1	B	471	TPQ	C3-C4	2.94	1.40	1.35
1	A	471	TPQ	C6-C1	2.68	1.41	1.34
1	B	471	TPQ	C6-C1	2.57	1.41	1.34

The worst 5 of 6 bond angle outliers are listed below:

Mol	Chain	Res	Type	Atoms	Z	Observed(°)	Ideal(°)
1	B	471	TPQ	CB-CA-C	-4.36	103.29	111.47
1	A	471	TPQ	O5-C5-C4	3.57	125.22	119.38
1	B	471	TPQ	C6-C1-C2	3.56	121.38	118.64
1	A	471	TPQ	CB-CA-C	-3.20	105.47	111.47
1	A	471	TPQ	C6-C1-C2	2.78	120.77	118.64

There are no chirality outliers.

All (2) torsion outliers are listed below:

Mol	Chain	Res	Type	Atoms
1	B	471	TPQ	N-CA-CB-C1
1	B	471	TPQ	C-CA-CB-C1

There are no ring outliers.

1 monomer is involved in 1 short contact:

Mol	Chain	Res	Type	Clashes	Symm-Clashes
1	B	471	TPQ	1	0

5.5 Carbohydrates [i](#)

12 monosaccharides are modelled in this entry.

In the following table, the Counts columns list the number of bonds (or angles) for which Mogul statistics could be retrieved, the number of bonds (or angles) that are observed in the model and the number of bonds (or angles) that are defined in the Chemical Component Dictionary. The Link column lists molecule types, if any, to which the group is linked. The Z score for a bond length (or angle) is the number of standard deviations the observed value is removed from the expected value. A bond length (or angle) with $|Z| > 2$ is considered an outlier worth inspection. RMSZ is the root-mean-square of all Z scores of the bond lengths (or angles).

Mol	Type	Chain	Res	Link	Bond lengths			Bond angles		
					Counts	RMSZ	# Z > 2	Counts	RMSZ	# Z > 2
2	NAG	C	1	2,1	14,14,15	0.74	0	17,19,21	1.56	4 (23%)
2	NAG	C	2	2	14,14,15	0.81	1 (7%)	17,19,21	1.61	4 (23%)
2	BMA	C	3	2	11,11,12	0.63	0	15,15,17	1.52	3 (20%)
3	NAG	D	1	3,1	14,14,15	0.62	0	17,19,21	1.49	3 (17%)
3	NAG	D	2	3	14,14,15	0.78	0	17,19,21	1.34	2 (11%)
4	NAG	E	1	4,1	14,14,15	0.57	0	17,19,21	1.23	1 (5%)
4	NAG	E	2	4	14,14,15	0.48	0	17,19,21	1.83	4 (23%)
4	BMA	E	3	4	11,11,12	0.79	0	15,15,17	2.15	4 (26%)
4	MAN	E	4	4	11,11,12	0.54	0	15,15,17	2.59	4 (26%)
4	BMA	E	5	4	11,11,12	0.70	0	15,15,17	2.33	6 (40%)
3	NAG	F	1	3,1	14,14,15	0.85	0	17,19,21	2.08	5 (29%)
3	NAG	F	2	3	14,14,15	0.64	0	17,19,21	1.49	3 (17%)

In the following table, the Chirals column lists the number of chiral outliers, the number of chiral centers analysed, the number of these observed in the model and the number defined in the Chemical Component Dictionary. Similar counts are reported in the Torsion and Rings columns. '-' means no outliers of that kind were identified.

Mol	Type	Chain	Res	Link	Chirals	Torsions	Rings
2	NAG	C	1	2,1	-	2/6/23/26	0/1/1/1
2	NAG	C	2	2	-	2/6/23/26	0/1/1/1
2	BMA	C	3	2	-	2/2/19/22	0/1/1/1

Continued on next page...

Continued from previous page...

Mol	Type	Chain	Res	Link	Chirals	Torsions	Rings
3	NAG	D	1	3,1	-	3/6/23/26	0/1/1/1
3	NAG	D	2	3	-	0/6/23/26	0/1/1/1
4	NAG	E	1	4,1	-	2/6/23/26	0/1/1/1
4	NAG	E	2	4	-	0/6/23/26	0/1/1/1
4	BMA	E	3	4	-	1/2/19/22	0/1/1/1
4	MAN	E	4	4	-	0/2/19/22	0/1/1/1
4	BMA	E	5	4	-	0/2/19/22	0/1/1/1
3	NAG	F	1	3,1	-	2/6/23/26	0/1/1/1
3	NAG	F	2	3	-	1/6/23/26	0/1/1/1

All (1) bond length outliers are listed below:

Mol	Chain	Res	Type	Atoms	Z	Observed(Å)	Ideal(Å)
2	C	2	NAG	O5-C1	-2.13	1.40	1.43

The worst 5 of 43 bond angle outliers are listed below:

Mol	Chain	Res	Type	Atoms	Z	Observed(°)	Ideal(°)
4	E	4	MAN	C1-O5-C5	8.35	123.50	112.19
3	F	1	NAG	C2-N2-C7	5.39	130.58	122.90
4	E	3	BMA	C3-C4-C5	5.29	119.68	110.24
4	E	5	BMA	C1-C2-C3	5.07	115.89	109.67
4	E	3	BMA	O4-C4-C3	-4.71	99.46	110.35

There are no chirality outliers.

5 of 15 torsion outliers are listed below:

Mol	Chain	Res	Type	Atoms
3	D	1	NAG	C3-C2-N2-C7
3	F	1	NAG	C3-C2-N2-C7
2	C	3	BMA	O5-C5-C6-O6
3	D	1	NAG	O5-C5-C6-O6
2	C	3	BMA	C4-C5-C6-O6

There are no ring outliers.

4 monomers are involved in 4 short contacts:

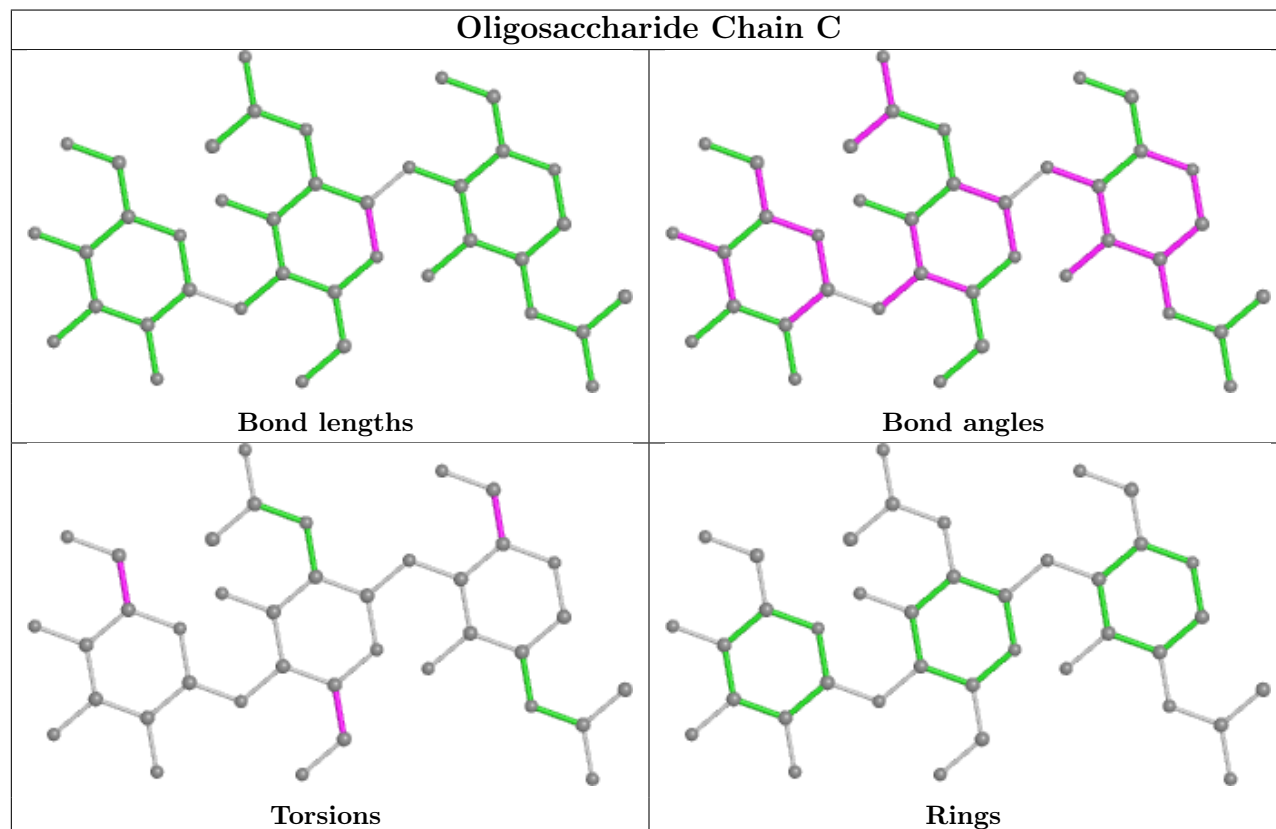
Mol	Chain	Res	Type	Clashes	Symm-Clashes
4	E	5	BMA	2	0
4	E	1	NAG	1	0

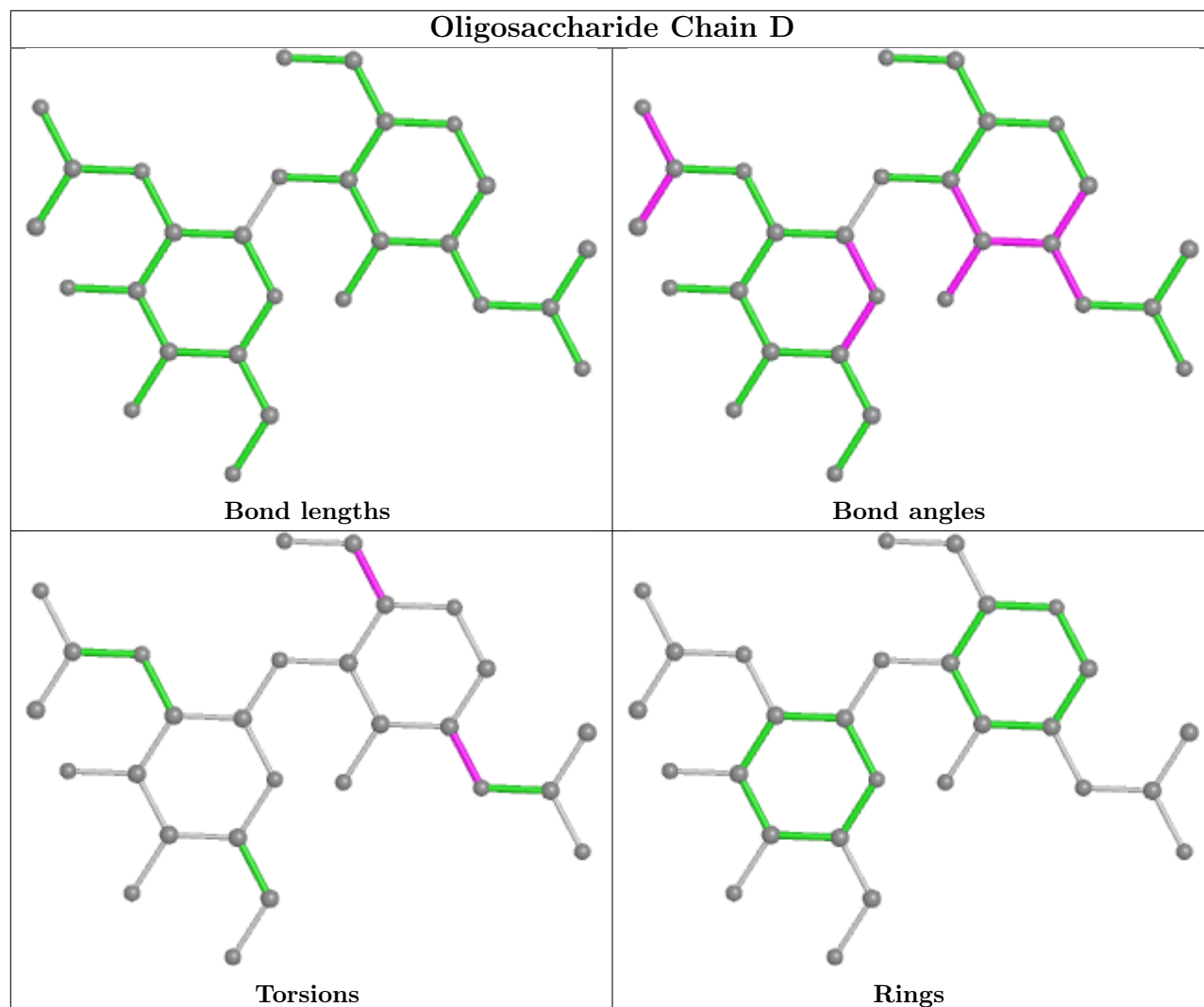
Continued on next page...

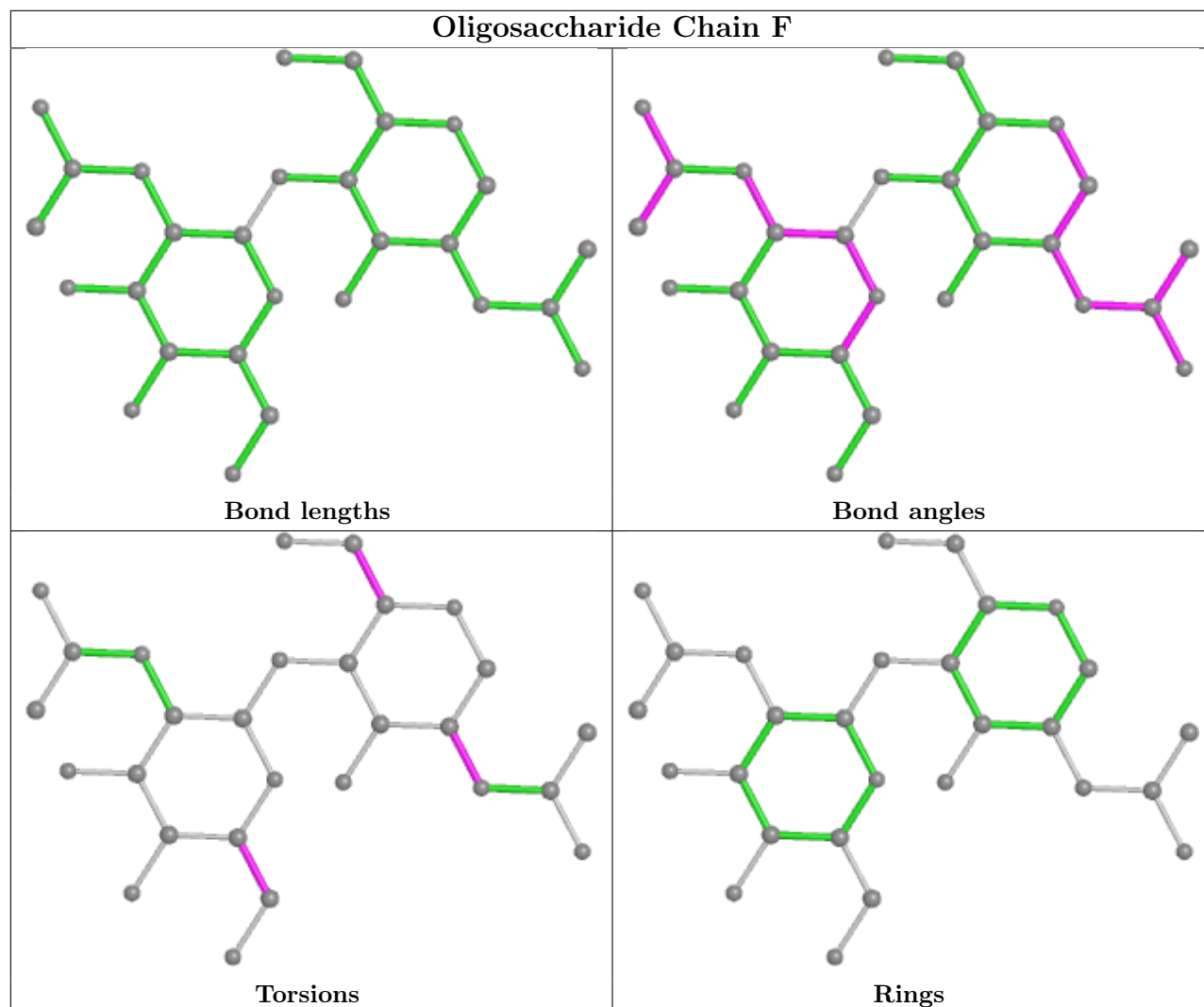
Continued from previous page...

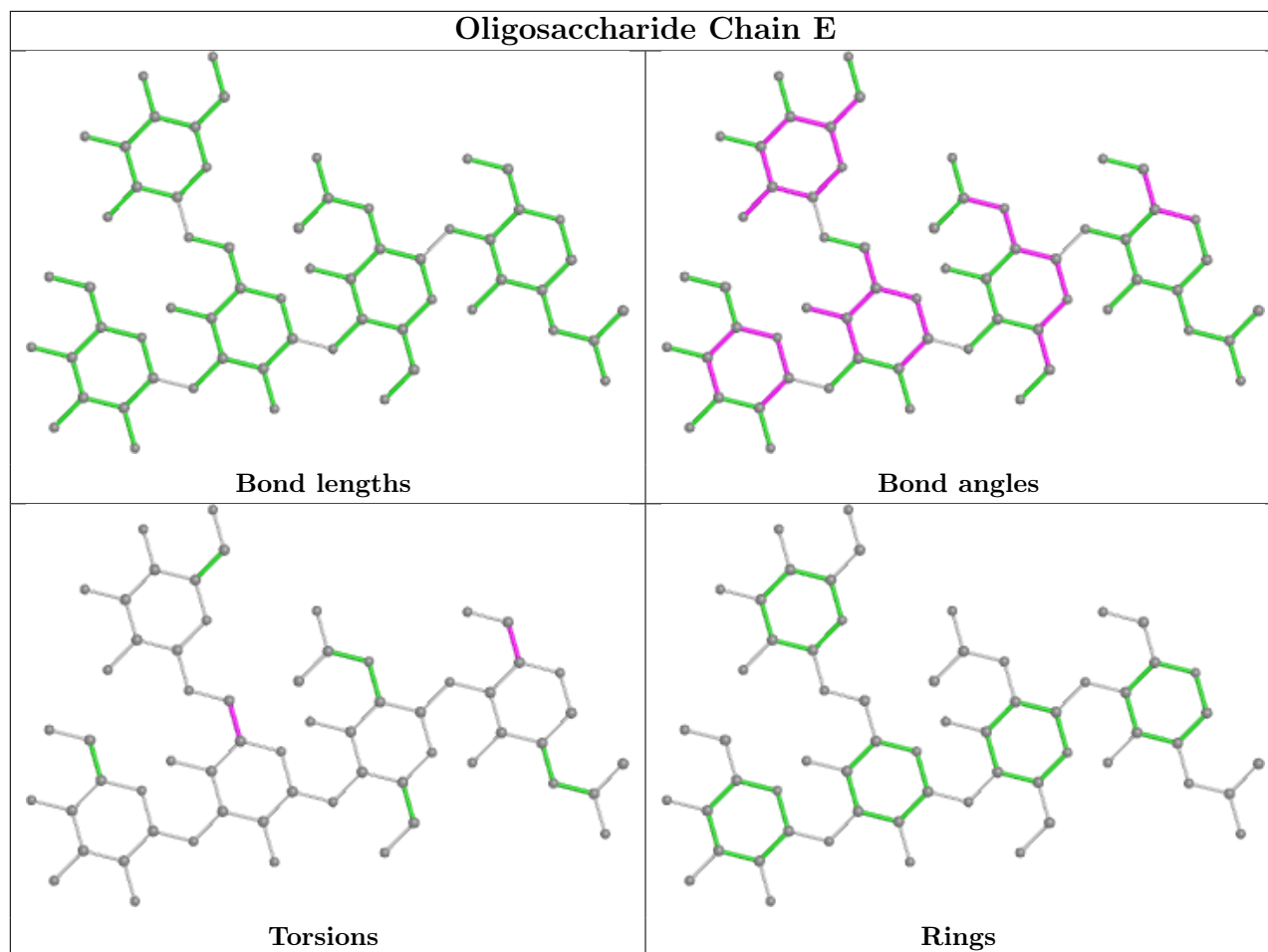
Mol	Chain	Res	Type	Clashes	Symm-Clashes
4	E	3	BMA	2	0
2	C	1	NAG	1	0

The following is a two-dimensional graphical depiction of Mogul quality analysis of bond lengths, bond angles, torsion angles, and ring geometry for oligosaccharide.









5.6 Ligand geometry [i](#)

Of 14 ligands modelled in this entry, 6 are monoatomic - leaving 8 for Mogul analysis.

In the following table, the Counts columns list the number of bonds (or angles) for which Mogul statistics could be retrieved, the number of bonds (or angles) that are observed in the model and the number of bonds (or angles) that are defined in the Chemical Component Dictionary. The Link column lists molecule types, if any, to which the group is linked. The Z score for a bond length (or angle) is the number of standard deviations the observed value is removed from the expected value. A bond length (or angle) with $|Z| > 2$ is considered an outlier worth inspection. RMSZ is the root-mean-square of all Z scores of the bond lengths (or angles).

Mol	Type	Chain	Res	Link	Bond lengths			Bond angles		
					Counts	RMSZ	# $ Z > 2$	Counts	RMSZ	# $ Z > 2$
7	NAG	A	1770	1	14,14,15	1.19	2 (14%)	17,19,21	2.14	5 (29%)
7	NAG	B	1774	1	14,14,15	1.45	1 (7%)	17,19,21	2.62	7 (41%)
7	NAG	A	1771	1	14,14,15	1.78	3 (21%)	17,19,21	3.35	9 (52%)
7	NAG	B	1773	1	14,14,15	1.00	1 (7%)	17,19,21	2.79	5 (29%)
8	JW7	A	2000	-	25,28,28	1.83	5 (20%)	28,38,38	2.85	8 (28%)

Mol	Type	Chain	Res	Link	Bond lengths			Bond angles		
					Counts	RMSZ	# Z > 2	Counts	RMSZ	# Z > 2
7	NAG	B	1775	1	14,14,15	0.71	0	17,19,21	1.44	2 (11%)
8	JW7	B	2000	-	25,28,28	1.97	4 (16%)	28,38,38	2.62	10 (35%)
7	NAG	B	1772	-	14,14,15	0.76	0	17,19,21	1.68	2 (11%)

In the following table, the Chirals column lists the number of chiral outliers, the number of chiral centers analysed, the number of these observed in the model and the number defined in the Chemical Component Dictionary. Similar counts are reported in the Torsion and Rings columns. '-' means no outliers of that kind were identified.

Mol	Type	Chain	Res	Link	Chirals	Torsions	Rings
7	NAG	A	1770	1	1/1/5/7	2/6/23/26	0/1/1/1
7	NAG	B	1774	1	1/1/5/7	4/6/23/26	0/1/1/1
7	NAG	A	1771	1	1/1/5/7	1/6/23/26	0/1/1/1
7	NAG	B	1773	1	-	2/6/23/26	0/1/1/1
8	JW7	A	2000	-	-	4/8/20/20	0/4/4/4
7	NAG	B	1775	1	-	2/6/23/26	0/1/1/1
8	JW7	B	2000	-	-	5/8/20/20	0/4/4/4
7	NAG	B	1772	-	-	1/6/23/26	0/1/1/1

The worst 5 of 16 bond length outliers are listed below:

Mol	Chain	Res	Type	Atoms	Z	Observed(Å)	Ideal(Å)
8	B	2000	JW7	OAA-CAW	6.36	1.37	1.23
8	A	2000	JW7	OAA-CAW	6.14	1.36	1.23
8	B	2000	JW7	CAS-NAY	-5.15	1.33	1.43
7	A	1771	NAG	C1-C2	4.79	1.59	1.52
7	B	1774	NAG	C1-C2	4.47	1.59	1.52

The worst 5 of 48 bond angle outliers are listed below:

Mol	Chain	Res	Type	Atoms	Z	Observed(°)	Ideal(°)
8	A	2000	JW7	NAN-CAU-NAO	-10.57	105.96	114.72
8	B	2000	JW7	NAN-CAU-NAO	-8.72	107.49	114.72
7	B	1773	NAG	C1-O5-C5	8.45	123.64	112.19
7	B	1774	NAG	C1-O5-C5	6.43	120.91	112.19
7	A	1771	NAG	C2-N2-C7	6.43	132.06	122.90

All (3) chirality outliers are listed below:

Mol	Chain	Res	Type	Atom
7	A	1770	NAG	C1
7	A	1771	NAG	C1
7	B	1774	NAG	C1

5 of 21 torsion outliers are listed below:

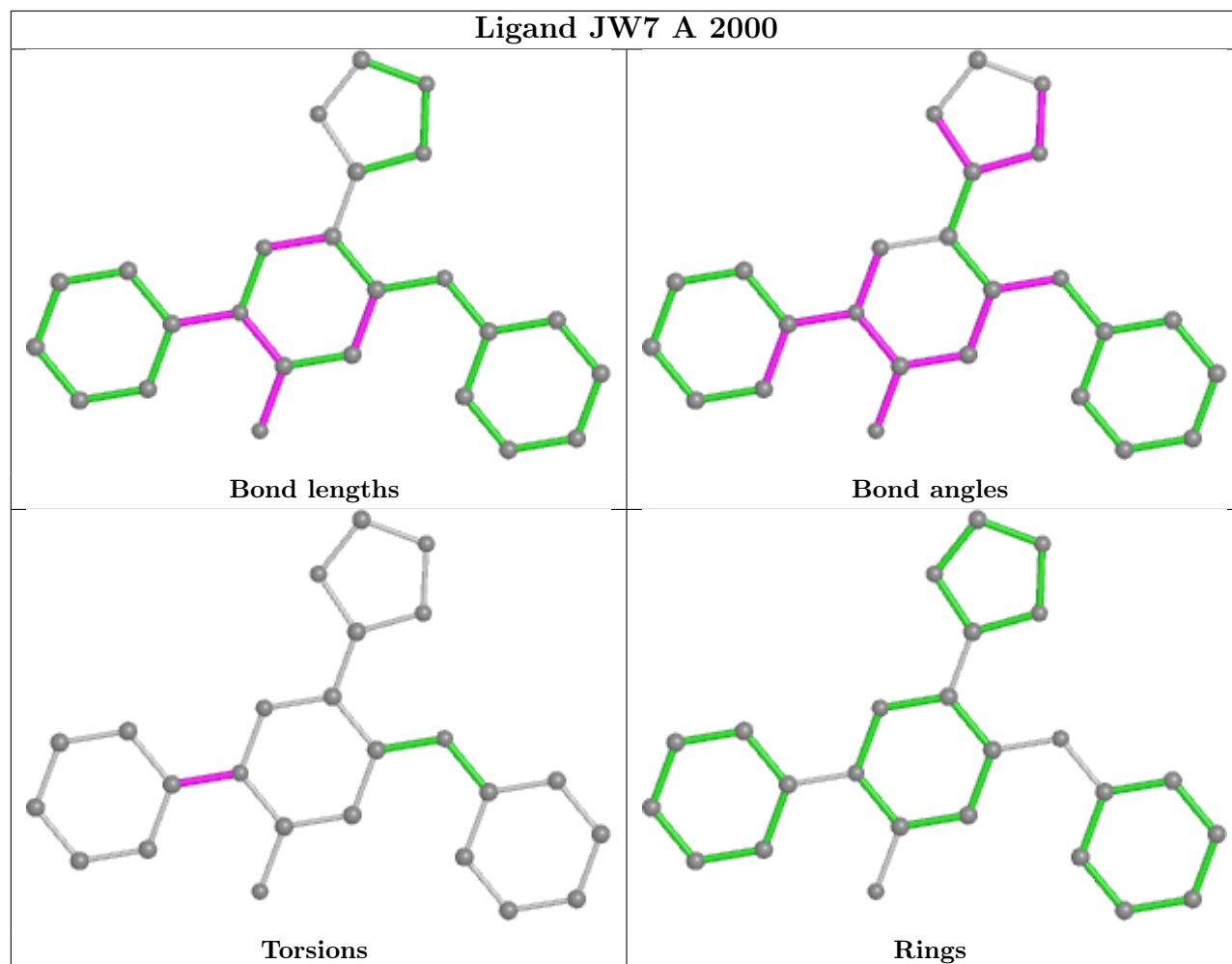
Mol	Chain	Res	Type	Atoms
7	A	1770	NAG	C4-C5-C6-O6
8	A	2000	JW7	CAE-CAS-NAY-CAW
8	A	2000	JW7	CAF-CAS-NAY-CAW
8	B	2000	JW7	CAE-CAS-NAY-CAW
8	B	2000	JW7	CAF-CAS-NAY-CAW

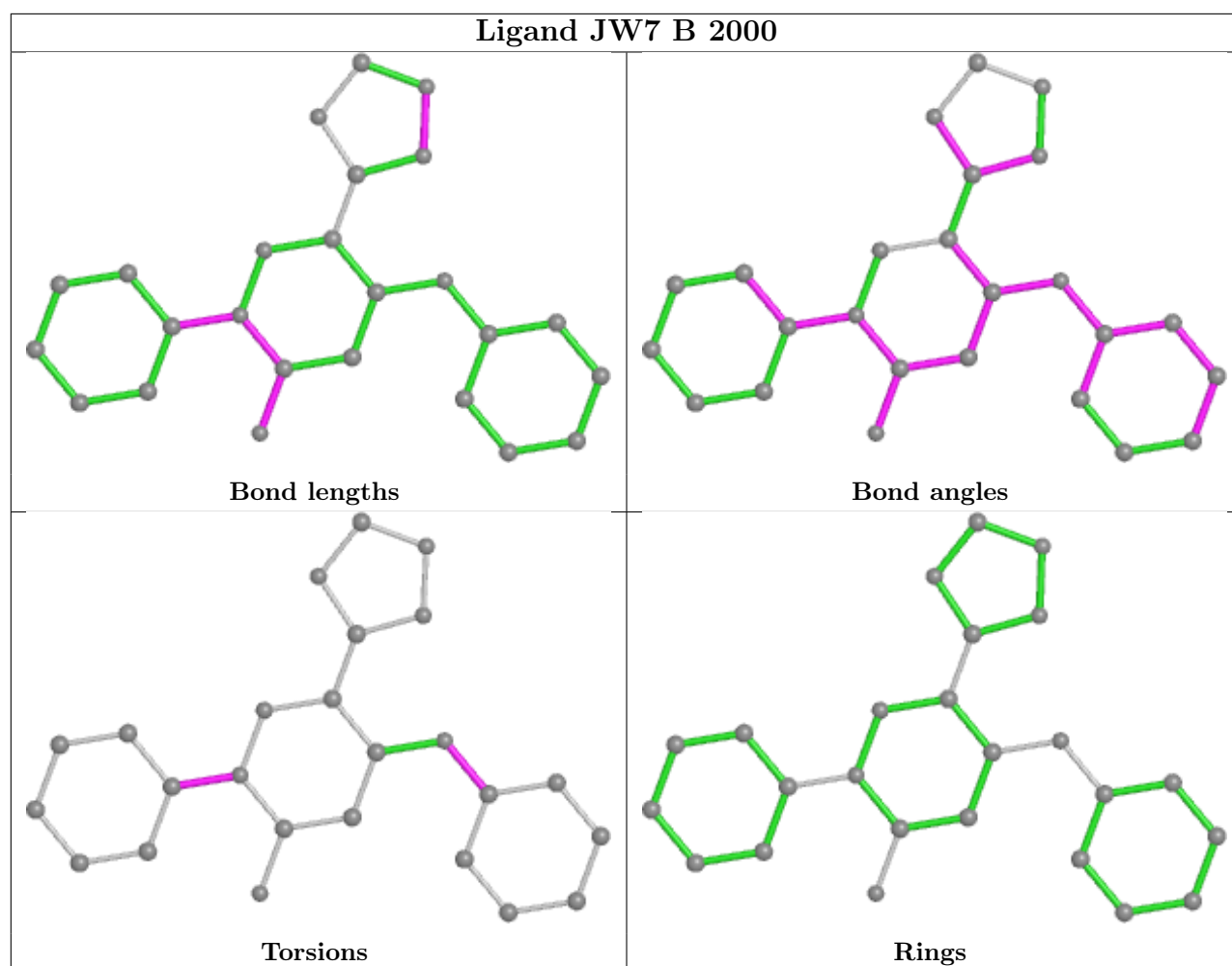
There are no ring outliers.

4 monomers are involved in 12 short contacts:

Mol	Chain	Res	Type	Clashes	Symm-Clashes
7	B	1774	NAG	1	0
7	B	1773	NAG	1	0
8	A	2000	JW7	4	0
8	B	2000	JW7	6	0

The following is a two-dimensional graphical depiction of Mogul quality analysis of bond lengths, bond angles, torsion angles, and ring geometry for all instances of the Ligand of Interest. In addition, ligands with molecular weight > 250 and outliers as shown on the validation Tables will also be included. For torsion angles, if less than 5% of the Mogul distribution of torsion angles is within 10 degrees of the torsion angle in question, then that torsion angle is considered an outlier. Any bond that is central to one or more torsion angles identified as an outlier by Mogul will be highlighted in the graph. For rings, the root-mean-square deviation (RMSD) between the ring in question and similar rings identified by Mogul is calculated over all ring torsion angles. If the average RMSD is greater than 60 degrees and the minimal RMSD between the ring in question and any Mogul-identified rings is also greater than 60 degrees, then that ring is considered an outlier. The outliers are highlighted in purple. The color gray indicates Mogul did not find sufficient equivalents in the CSD to analyse the geometry.





5.7 Other polymers [i](#)

There are no such residues in this entry.

5.8 Polymer linkage issues [i](#)

There are no chain breaks in this entry.

6 Fit of model and data [i](#)

6.1 Protein, DNA and RNA chains [i](#)

In the following table, the column labelled ‘#RSRZ > 2’ contains the number (and percentage) of RSRZ outliers, followed by percent RSRZ outliers for the chain as percentile scores relative to all X-ray entries and entries of similar resolution. The OWAB column contains the minimum, median, 95th percentile and maximum values of the occupancy-weighted average B-factor per residue. The column labelled ‘Q < 0.9’ lists the number of (and percentage) of residues with an average occupancy less than 0.9.

Mol	Chain	Analysed	<RSRZ>	#RSRZ>2	OWAB(Å ²)	Q<0.9
1	A	710/737 (96%)	-0.49	5 (0%) 87 84	39, 58, 82, 138	0
1	B	704/737 (95%)	-0.41	7 (0%) 82 77	38, 59, 91, 153	0
All	All	1414/1474 (95%)	-0.45	12 (0%) 86 81	38, 59, 86, 153	0

The worst 5 of 12 RSRZ outliers are listed below:

Mol	Chain	Res	Type	RSRZ
1	B	746	ALA	5.4
1	B	747	ALA	5.0
1	B	745	ALA	4.3
1	B	748	CYS	2.9
1	B	735	GLU	2.8

6.2 Non-standard residues in protein, DNA, RNA chains [i](#)

In the following table, the Atoms column lists the number of modelled atoms in the group and the number defined in the chemical component dictionary. The B-factors column lists the minimum, median, 95th percentile and maximum values of B factors of atoms in the group. The column labelled ‘Q < 0.9’ lists the number of atoms with occupancy less than 0.9.

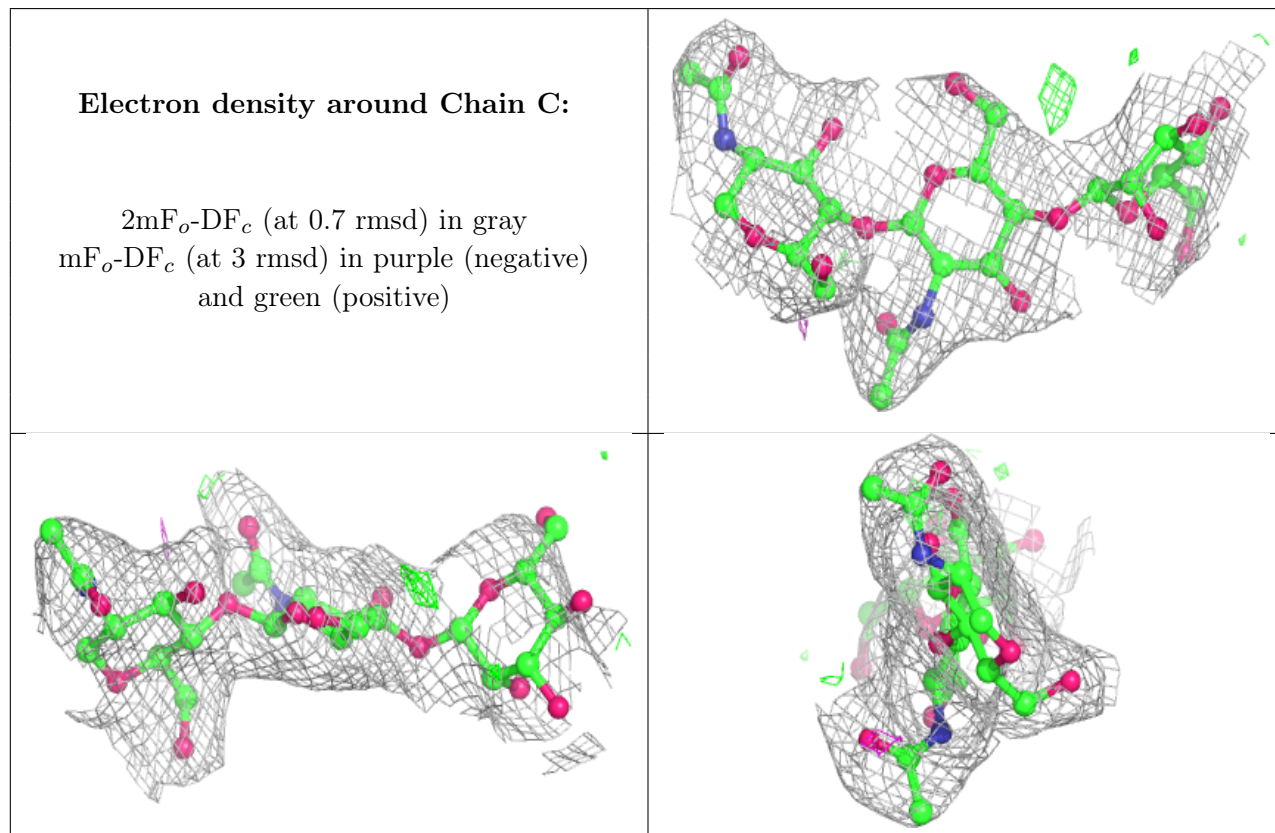
Mol	Type	Chain	Res	Atoms	RSCC	RSR	B-factors(Å ²)	Q<0.9
1	TPQ	A	471	14/15	0.98	0.19	43,48,52,54	0
1	TPQ	B	471	14/15	0.98	0.26	44,53,56,59	0

6.3 Carbohydrates [i](#)

In the following table, the Atoms column lists the number of modelled atoms in the group and the number defined in the chemical component dictionary. The B-factors column lists the minimum, median, 95th percentile and maximum values of B factors of atoms in the group. The column labelled ‘Q < 0.9’ lists the number of atoms with occupancy less than 0.9.

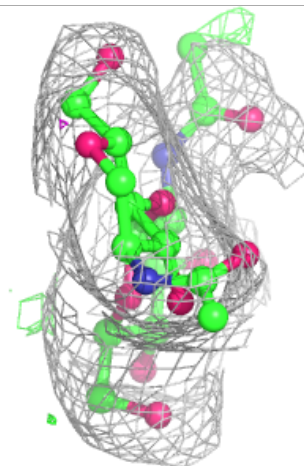
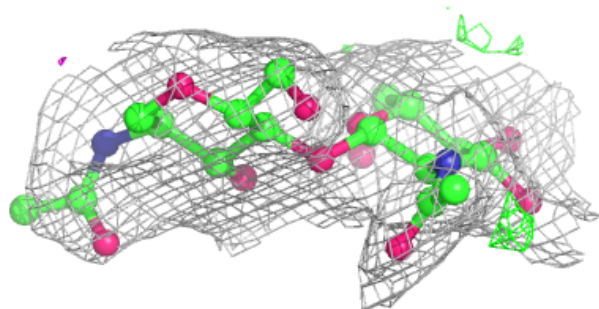
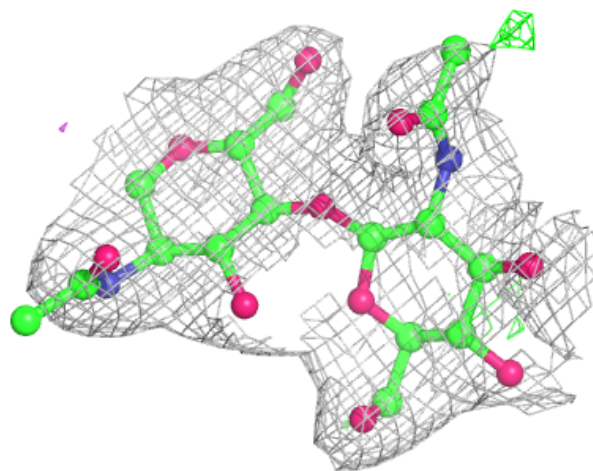
Mol	Type	Chain	Res	Atoms	RSCC	RSR	B-factors(\AA^2)	Q<0.9
4	BMA	E	5	11/12	0.72	0.26	116,140,161,163	0
2	BMA	C	3	11/12	0.77	0.30	110,116,124,128	0
3	NAG	D	2	14/15	0.88	0.18	91,112,124,126	0
4	MAN	E	4	11/12	0.89	0.31	112,126,141,142	0
4	BMA	E	3	11/12	0.89	0.19	116,126,135,160	0
4	NAG	E	2	14/15	0.91	0.18	67,101,115,119	0
3	NAG	F	2	14/15	0.91	0.17	105,119,128,130	0
2	NAG	C	2	14/15	0.94	0.18	63,76,95,112	0
3	NAG	F	1	14/15	0.95	0.11	70,86,93,104	0
2	NAG	C	1	14/15	0.97	0.13	65,71,75,77	0
3	NAG	D	1	14/15	0.98	0.10	72,83,99,101	0
4	NAG	E	1	14/15	0.98	0.09	49,56,59,66	0

The following is a graphical depiction of the model fit to experimental electron density for oligosaccharide. Each fit is shown from different orientation to approximate a three-dimensional view.



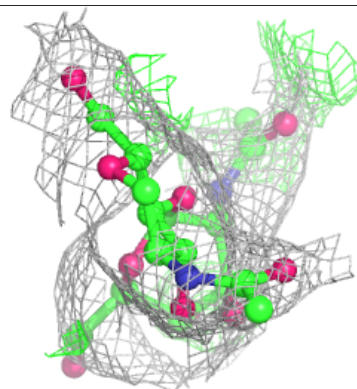
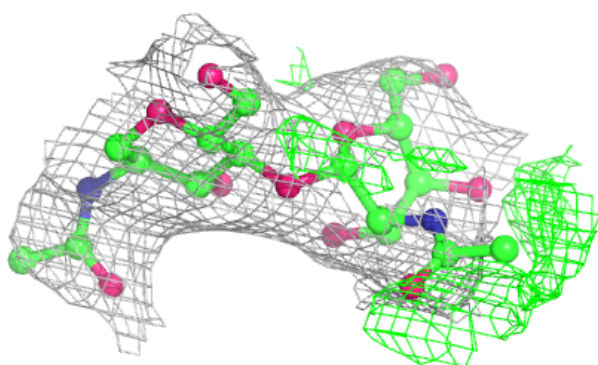
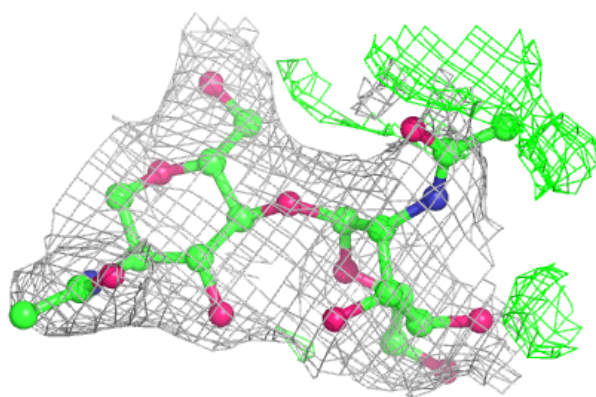
Electron density around Chain D:

$2mF_o-DF_c$ (at 0.7 rmsd) in gray
 mF_o-DF_c (at 3 rmsd) in purple (negative)
and green (positive)

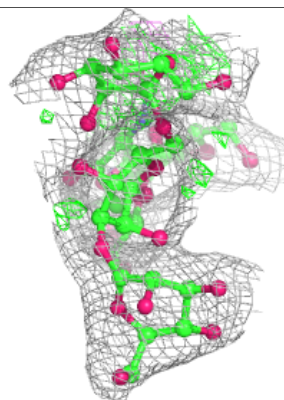
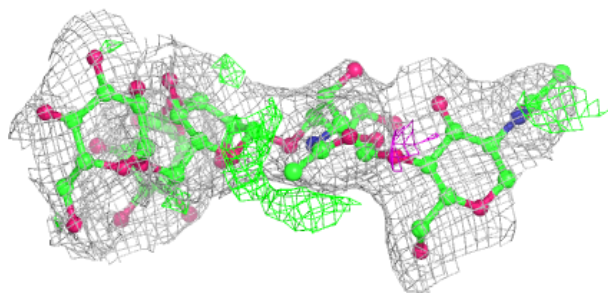
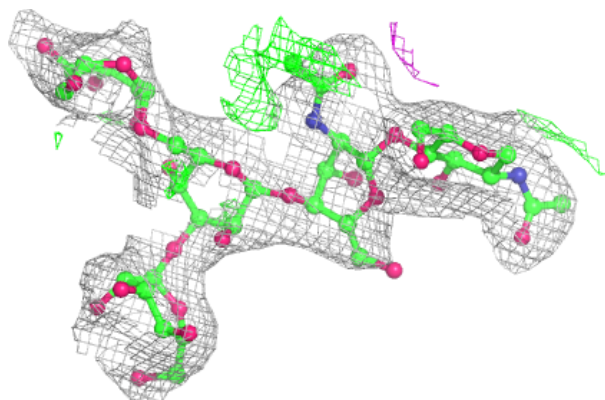


Electron density around Chain F:

$2mF_o-DF_c$ (at 0.7 rmsd) in gray
 mF_o-DF_c (at 3 rmsd) in purple (negative)
and green (positive)

**Electron density around Chain E:**

$2mF_o-DF_c$ (at 0.7 rmsd) in gray
 mF_o-DF_c (at 3 rmsd) in purple (negative)
and green (positive)

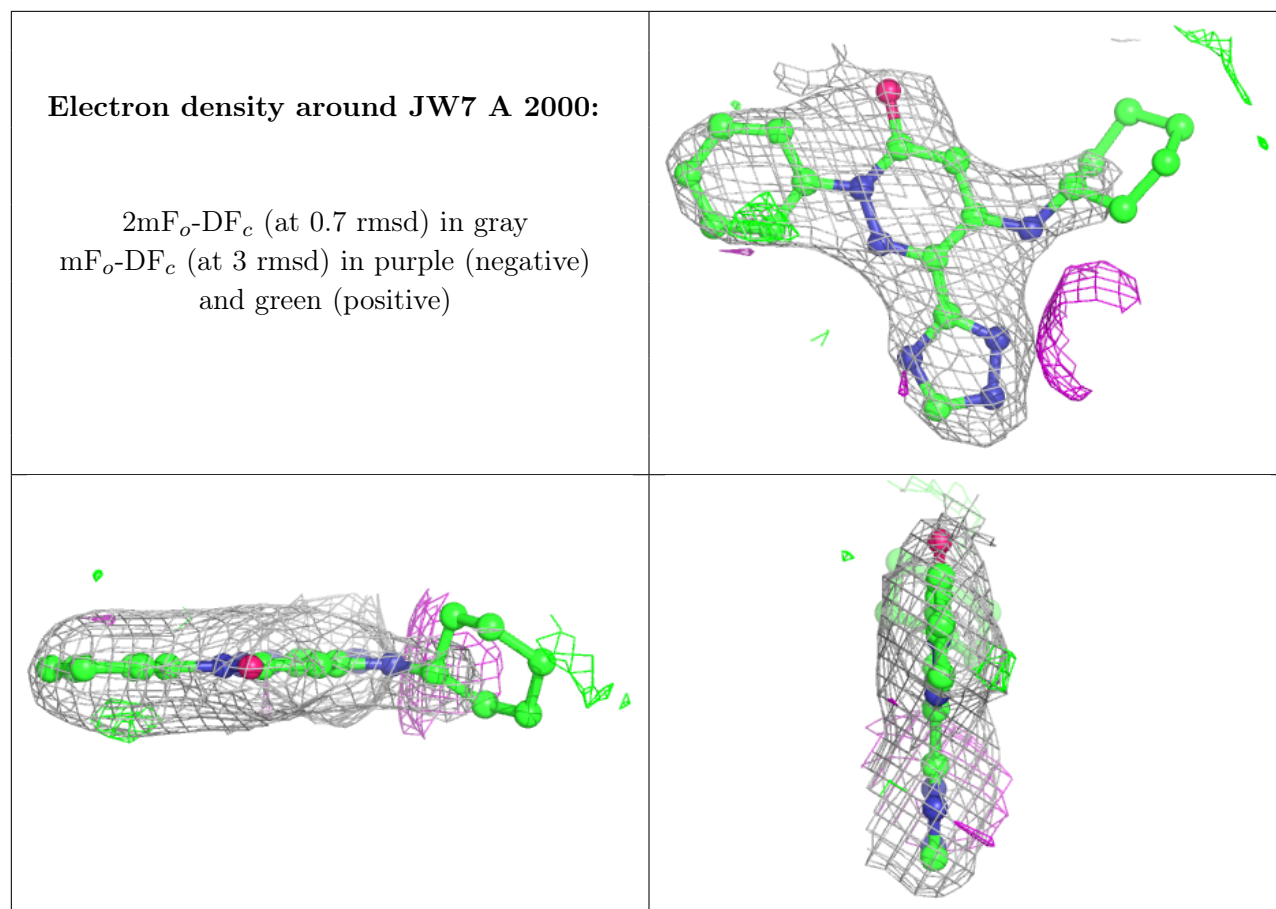


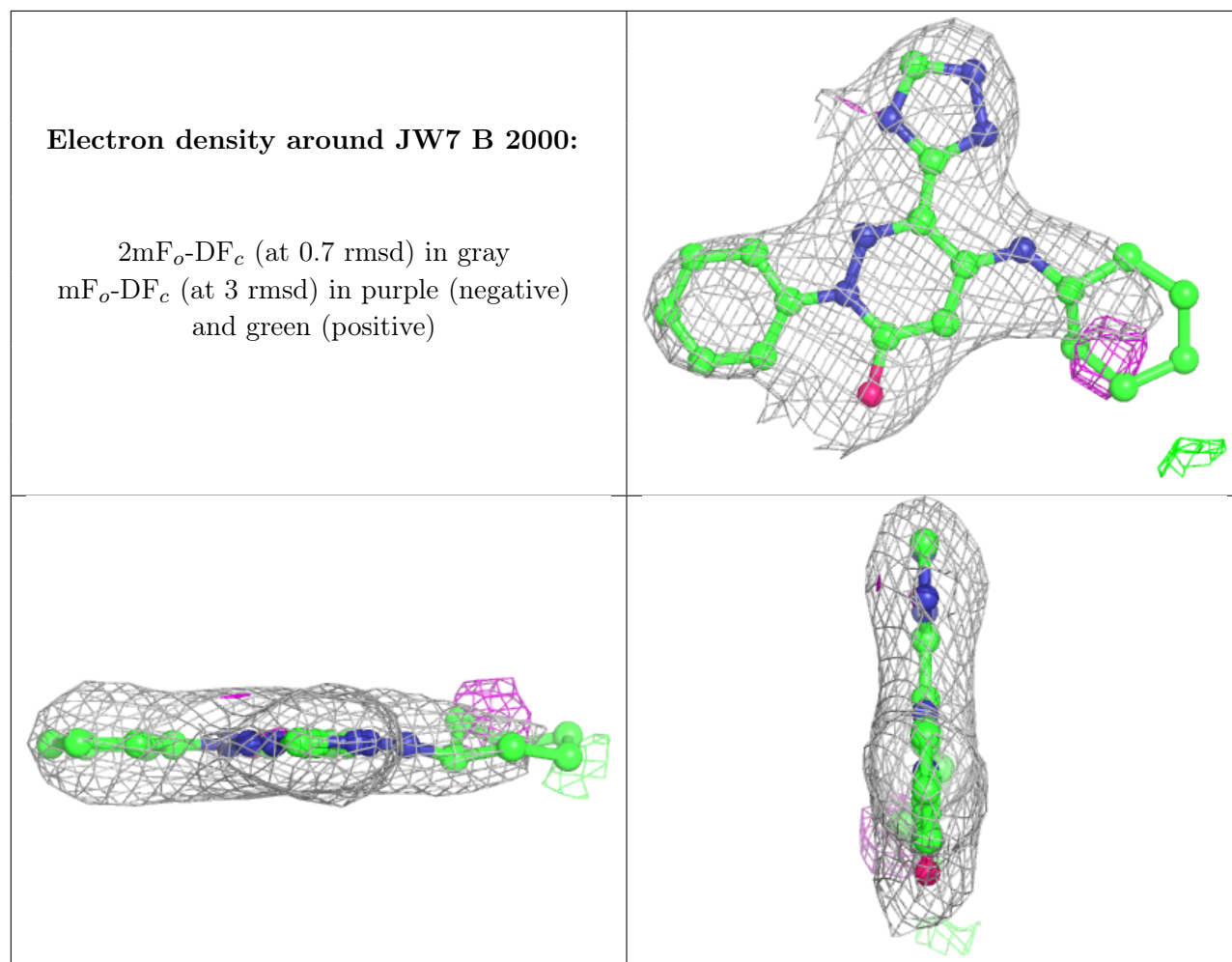
6.4 Ligands

In the following table, the Atoms column lists the number of modelled atoms in the group and the number defined in the chemical component dictionary. The B-factors column lists the minimum, median, 95th percentile and maximum values of B factors of atoms in the group. The column labelled 'Q< 0.9' lists the number of atoms with occupancy less than 0.9.

Mol	Type	Chain	Res	Atoms	RSCC	RSR	B-factors(\AA^2)	Q<0.9
7	NAG	B	1774	14/15	0.54	0.40	94,121,135,136	0
7	NAG	B	1772	14/15	0.73	0.31	103,132,140,141	0
7	NAG	B	1773	14/15	0.79	0.23	87,129,136,136	0
7	NAG	A	1771	14/15	0.82	0.24	77,97,104,105	0
7	NAG	B	1775	14/15	0.84	0.28	72,97,107,109	0
7	NAG	A	1770	14/15	0.85	0.31	74,93,115,115	0
8	JW7	A	2000	25/25	0.91	0.28	65,90,143,148	0
6	CA	A	1764	1/1	0.92	0.04	59,59,59,59	0
6	CA	A	1763	1/1	0.96	0.06	51,51,51,51	0
8	JW7	B	2000	25/25	0.96	0.20	46,54,97,99	0
6	CA	B	1763	1/1	0.98	0.06	51,51,51,51	0
6	CA	B	1764	1/1	0.98	0.03	60,60,60,60	0
5	CU	A	1762	1/1	1.00	0.20	54,54,54,54	0
5	CU	B	1762	1/1	1.00	0.18	54,54,54,54	0

The following is a graphical depiction of the model fit to experimental electron density of all instances of the Ligand of Interest. In addition, ligands with molecular weight > 250 and outliers as shown on the geometry validation Tables will also be included. Each fit is shown from different orientation to approximate a three-dimensional view.





6.5 Other polymers [i](#)

There are no such residues in this entry.