



# Full wwPDB X-ray Structure Validation Report ⓘ

Sep 26, 2023 – 04:08 AM EDT

PDB ID : 6BTL  
Title : Crystal structure of Trypanothione Reductase from Trypanosoma brucei in complex with inhibitor RD117 1-[2-(Piperazin-1-yl)ethyl]-5-{5-[1-(pyrrolidin-1-yl)cyclohexyl]-1,3-thiazol-2-yl}-1H-indole  
Authors : Bryson, S.; De Gasparo, R.; Krauth-Siegel, R.L.; Diederich, F.; Pai, E.F.  
Deposited on : 2017-12-06  
Resolution : 2.80 Å(reported)

This is a Full wwPDB X-ray Structure Validation Report for a publicly released PDB entry.

We welcome your comments at [validation@mail.wwpdb.org](mailto:validation@mail.wwpdb.org)

A user guide is available at

<https://www.wwpdb.org/validation/2017/XrayValidationReportHelp>

with specific help available everywhere you see the ⓘ symbol.

The types of validation reports are described at

<http://www.wwpdb.org/validation/2017/FAQs#types>.

---

The following versions of software and data (see [references ⓘ](#)) were used in the production of this report:

MolProbity : 4.02b-467  
Mogul : 1.8.5 (274361), CSD as541be (2020)  
Xtriage (Phenix) : 1.13  
EDS : 2.35.1  
buster-report : 1.1.7 (2018)  
Percentile statistics : 20191225.v01 (using entries in the PDB archive December 25th 2019)  
Refmac : 5.8.0158  
CCP4 : 7.0.044 (Gargrove)  
Ideal geometry (proteins) : Engh & Huber (2001)  
Ideal geometry (DNA, RNA) : Parkinson et al. (1996)  
Validation Pipeline (wwPDB-VP) : 2.35.1

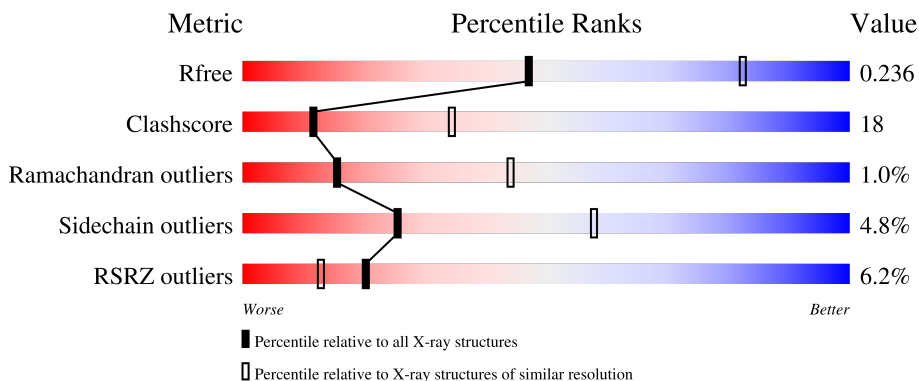
# 1 Overall quality at a glance

The following experimental techniques were used to determine the structure:

*X-RAY DIFFRACTION*

The reported resolution of this entry is 2.80 Å.

Percentile scores (ranging between 0-100) for global validation metrics of the entry are shown in the following graphic. The table shows the number of entries on which the scores are based.



Metric	Whole archive (#Entries)	Similar resolution (#Entries, resolution range(Å))
$R_{free}$	130704	3140 (2.80-2.80)
Clashscore	141614	3569 (2.80-2.80)
Ramachandran outliers	138981	3498 (2.80-2.80)
Sidechain outliers	138945	3500 (2.80-2.80)
RSRZ outliers	127900	3078 (2.80-2.80)

The table below summarises the geometric issues observed across the polymeric chains and their fit to the electron density. The red, orange, yellow and green segments of the lower bar indicate the fraction of residues that contain outliers for  $\geq 3$ , 2, 1 and 0 types of geometric quality criteria respectively. A grey segment represents the fraction of residues that are not modelled. The numeric value for each fraction is indicated below the corresponding segment, with a dot representing fractions  $\leq 5\%$ . The upper red bar (where present) indicates the fraction of residues that have poor fit to the electron density. The numeric value is given above the bar.

Mol	Chain	Length	Quality of chain
1	A	495	 7% 63% 34% ..
1	B	495	 5% 68% 29% ..



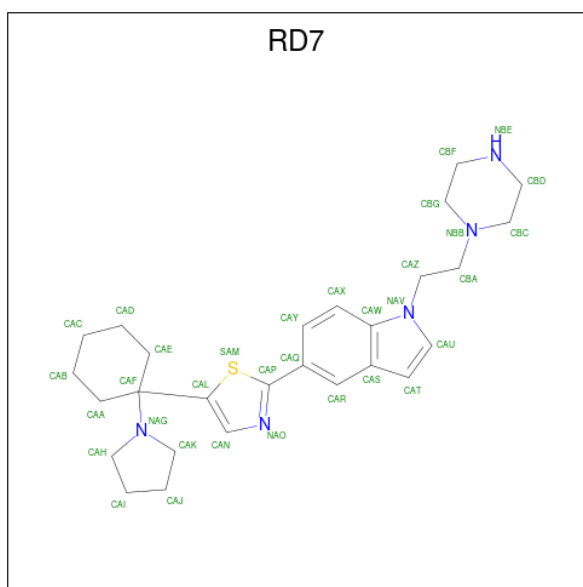
Mol	Chain	Residues	Atoms					ZeroOcc	AltConf
			Total	C	N	O	P		
2	A	1	53	27	9	15	2	0	0
2	B	1	53	27	9	15	2	0	0

- Molecule 3 is SULFATE ION (three-letter code: SO4) (formula: O<sub>4</sub>S).



Mol	Chain	Residues	Atoms			ZeroOcc	AltConf
			Total	O	S		
3	A	1	5	4	1	0	0
3	A	1	5	4	1	0	0
3	A	1	5	4	1	0	0
3	A	1	5	4	1	0	0
3	B	1	5	4	1	0	0

- Molecule 4 is 1-[2-(piperazin-1-yl)ethyl]-5-[5-[1-(pyrrolidin-1-yl)cyclohexyl]-1,3-thiazol-2-yl]-1H-indole (three-letter code: RD7) (formula: C<sub>27</sub>H<sub>37</sub>N<sub>5</sub>S).



Mol	Chain	Residues	Atoms				ZeroOcc	AltConf
4	A	1	Total	C	N	S	0	0
			33	27	5	1		
4	B	1	Total	C	N	S	0	0
			33	27	5	1		

- Molecule 5 is GLYCEROL (three-letter code: GOL) (formula:  $C_3H_8O_3$ ).



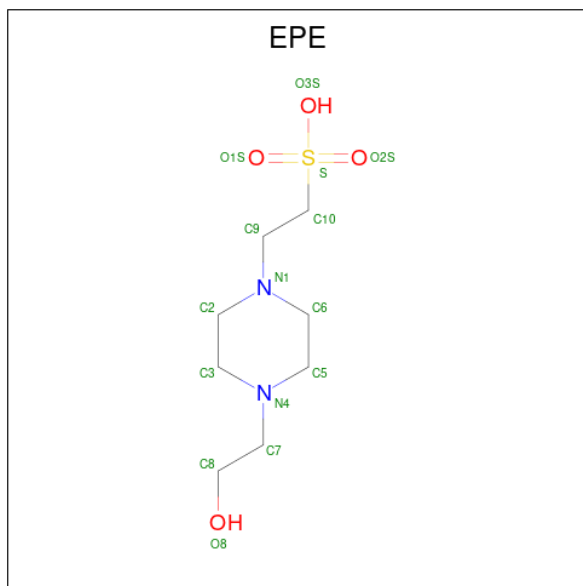
Mol	Chain	Residues	Atoms				ZeroOcc	AltConf
5	A	1	Total	C	H	O	0	0
			14	3	8	3		
5	B	1	Total	C	H	O	0	0
			14	3	8	3		

*Continued on next page...*

Continued from previous page...

Mol	Chain	Residues	Atoms				ZeroOcc	AltConf
5	B	1	Total	C	H	O	0	0
			14	3	8	3		
5	B	1	Total	C	H	O	0	0
			14	3	8	3		

- Molecule 6 is 4-(2-HYDROXYETHYL)-1-PIPERAZINE ETHANESULFONIC ACID (three-letter code: EPE) (formula: C<sub>8</sub>H<sub>18</sub>N<sub>2</sub>O<sub>4</sub>S).



Mol	Chain	Residues	Atoms					ZeroOcc	AltConf	
6	B	1	Total	C	N	O	S	0	0	
			15	8	2	4	1			
6	B	1	Total	C	H	N	O	S	0	0
			32	8	17	2	4	1		

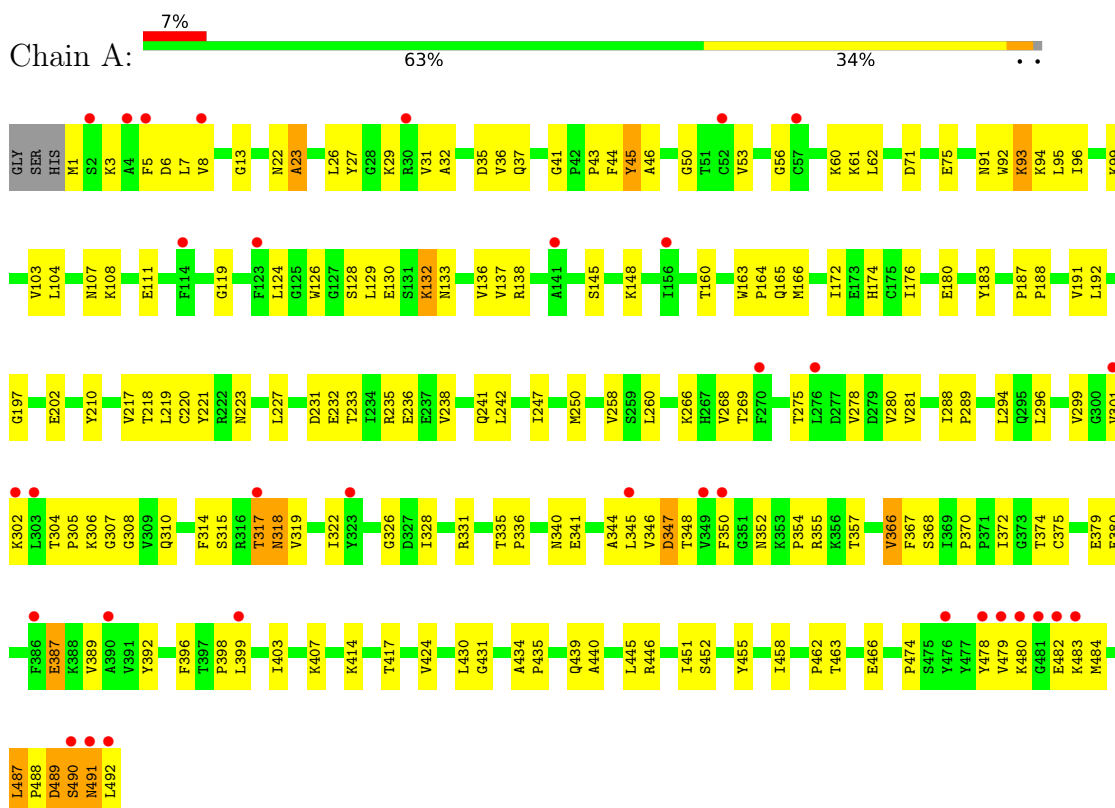
- Molecule 7 is water.

Mol	Chain	Residues	Atoms		ZeroOcc	AltConf
7	A	4	Total	O	0	0
			4	4		
7	B	5	Total	O	0	0
			5	5		

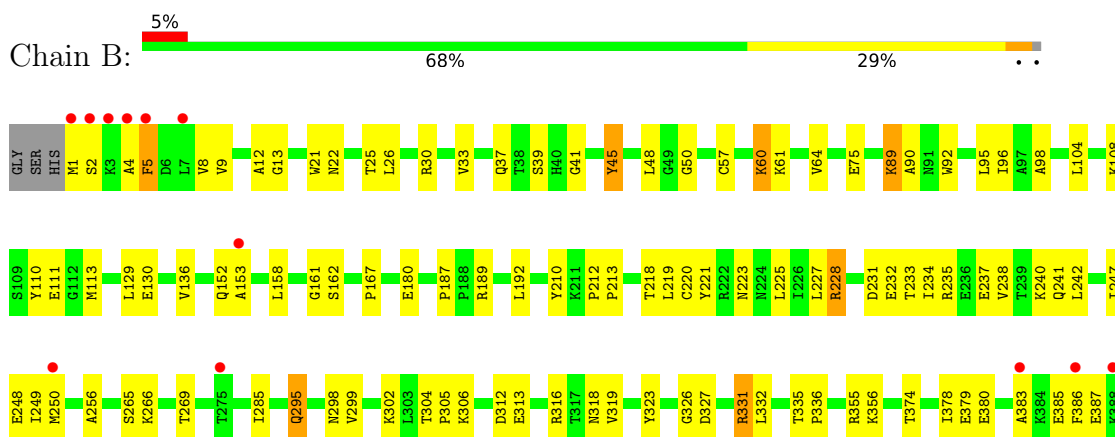
### 3 Residue-property plots [i](#)

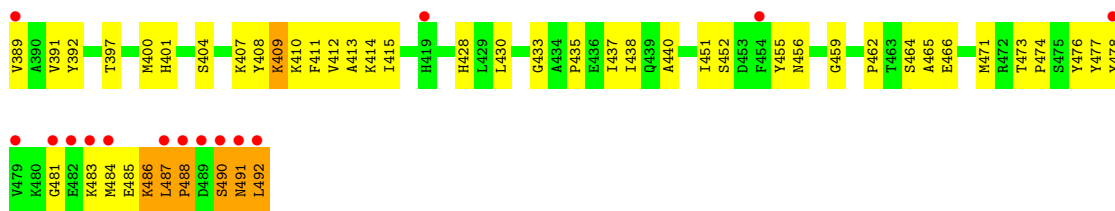
These plots are drawn for all protein, RNA, DNA and oligosaccharide chains in the entry. The first graphic for a chain summarises the proportions of the various outlier classes displayed in the second graphic. The second graphic shows the sequence view annotated by issues in geometry and electron density. Residues are color-coded according to the number of geometric quality criteria for which they contain at least one outlier: green = 0, yellow = 1, orange = 2 and red = 3 or more. A red dot above a residue indicates a poor fit to the electron density ( $RSRZ > 2$ ). Stretches of 2 or more consecutive residues without any outlier are shown as a green connector. Residues present in the sample, but not in the model, are shown in grey.

- Molecule 1: Trypanothione reductase



- Molecule 1: Trypanothione reductase







## 4 Data and refinement statistics

Property	Value	Source
Space group	P 43 21 2	Depositor
Cell constants a, b, c, $\alpha$ , $\beta$ , $\gamma$	117.66Å 117.66Å 225.16Å 90.00° 90.00° 90.00°	Depositor
Resolution (Å)	47.67 – 2.80 47.67 – 2.80	Depositor EDS
% Data completeness (in resolution range)	99.4 (47.67-2.80) 99.4 (47.67-2.80)	Depositor EDS
$R_{merge}$	0.14	Depositor
$R_{sym}$	(Not available)	Depositor
$\langle I/\sigma(I) \rangle$ <sup>1</sup>	1.18 (at 2.81Å)	Xtrriage
Refinement program	PHENIX (1.12_2829: ???)	Depositor
R, $R_{free}$	0.197 , 0.236 0.199 , 0.236	Depositor DCC
$R_{free}$ test set	1917 reflections (4.84%)	wwPDB-VP
Wilson B-factor (Å <sup>2</sup> )	79.3	Xtrriage
Anisotropy	0.338	Xtrriage
Bulk solvent $k_{sol}$ (e/Å <sup>3</sup> ), $B_{sol}$ (Å <sup>2</sup> )	0.30 , 49.3	EDS
L-test for twinning <sup>2</sup>	$\langle  L  \rangle = 0.46$ , $\langle L^2 \rangle = 0.28$	Xtrriage
Estimated twinning fraction	No twinning to report.	Xtrriage
$F_o, F_c$ correlation	0.95	EDS
Total number of atoms	7781	wwPDB-VP
Average B, all atoms (Å <sup>2</sup> )	91.0	wwPDB-VP

Xtrriage's analysis on translational NCS is as follows: *The largest off-origin peak in the Patterson function is 3.71% of the height of the origin peak. No significant pseudotranslation is detected.*

<sup>1</sup>Intensities estimated from amplitudes.

<sup>2</sup>Theoretical values of  $\langle |L| \rangle$ ,  $\langle L^2 \rangle$  for acentric reflections are 0.5, 0.333 respectively for untwinned datasets, and 0.375, 0.2 for perfectly twinned datasets.

## 5 Model quality [i](#)

### 5.1 Standard geometry [i](#)

Bond lengths and bond angles in the following residue types are not validated in this section: RD7, SO4, EPE, FAD, GOL

The Z score for a bond length (or angle) is the number of standard deviations the observed value is removed from the expected value. A bond length (or angle) with  $|Z| > 5$  is considered an outlier worth inspection. RMSZ is the root-mean-square of all Z scores of the bond lengths (or angles).

Mol	Chain	Bond lengths		Bond angles	
		RMSZ	# Z  >5	RMSZ	# Z  >5
1	A	0.28	0/3814	0.46	0/5174
1	B	0.27	0/3814	0.45	0/5174
All	All	0.28	0/7628	0.46	0/10348

There are no bond length outliers.

There are no bond angle outliers.

There are no chirality outliers.

There are no planarity outliers.

### 5.2 Too-close contacts [i](#)

In the following table, the Non-H and H(model) columns list the number of non-hydrogen atoms and hydrogen atoms in the chain respectively. The H(added) column lists the number of hydrogen atoms added and optimized by MolProbity. The Clashes column lists the number of clashes within the asymmetric unit, whereas Symm-Clashes lists symmetry-related clashes.

Mol	Chain	Non-H	H(model)	H(added)	Clashes	Symm-Clashes
1	A	3736	0	3746	143	0
1	B	3736	0	3746	130	0
2	A	53	0	31	3	0
2	B	53	0	31	1	0
3	A	20	0	0	1	0
3	B	5	0	0	0	0
4	A	33	0	0	1	0
4	B	33	0	0	1	0
5	A	6	8	8	1	0
5	B	18	24	24	2	0
6	B	30	17	34	1	0

*Continued on next page...*

Continued from previous page...

Mol	Chain	Non-H	H(model)	H(added)	Clashes	Symm-Clashes
7	A	4	0	0	0	0
7	B	5	0	0	0	0
All	All	7732	49	7620	269	0

The all-atom clashscore is defined as the number of clashes found per 1000 atoms (including hydrogen atoms). The all-atom clashscore for this structure is 18.

All (269) close contacts within the same asymmetric unit are listed below, sorted by their clash magnitude.

Atom-1	Atom-2	Interatomic distance (Å)	Clash overlap (Å)
1:B:487:LEU:HB3	1:B:488:PRO:CD	1.69	1.21
1:B:487:LEU:HB3	1:B:488:PRO:HD2	1.13	1.13
1:B:304:THR:HG22	1:B:306:LYS:H	1.23	0.99
1:A:348:THR:HG22	1:A:354:PRO:HA	1.47	0.95
1:B:486:LYS:H	1:B:486:LYS:HE2	1.40	0.86
1:A:370:PRO:HG2	1:A:430:LEU:HD11	1.64	0.79
1:B:221:TYR:CE2	1:B:223:ASN:HB2	2.18	0.79
1:A:93:LYS:H	1:A:93:LYS:HD2	1.49	0.78
1:A:489:ASP:OD1	1:A:489:ASP:N	2.14	0.77
1:B:392:TYR:HB3	1:B:471:MET:HE3	1.67	0.77
1:B:484:MET:HE3	1:B:487:LEU:HA	1.67	0.76
1:A:22:ASN:O	1:A:346:VAL:HG11	1.88	0.74
1:A:348:THR:HG22	1:A:355:ARG:H	1.52	0.74
1:B:487:LEU:CB	1:B:488:PRO:CD	2.53	0.72
1:B:130:GLU:HB2	1:B:136:VAL:HG13	1.70	0.71
1:A:301:VAL:HG13	1:A:317:THR:HG21	1.72	0.71
1:B:92:TRP:HB3	1:B:187:PRO:HD3	1.74	0.70
1:A:392:TYR:HE1	1:A:474:PRO:HG3	1.56	0.70
1:B:95:LEU:HD22	1:B:210:TYR:CZ	2.27	0.69
1:B:302:LYS:HG3	1:B:318:ASN:ND2	2.07	0.69
1:A:302:LYS:HD2	1:A:310:GLN:OE1	1.93	0.69
1:B:234:ILE:O	1:B:238:VAL:HG12	1.94	0.68
1:A:392:TYR:CE2	1:A:451:ILE:HG12	2.28	0.68
1:A:221:TYR:CE2	1:A:223:ASN:HB2	2.28	0.67
1:B:492:LEU:HD13	1:B:492:LEU:N	2.10	0.66
1:B:110:TYR:O	1:B:113:MET:HB3	1.96	0.66
1:A:93:LYS:H	1:A:93:LYS:CD	2.09	0.65
1:B:486:LYS:HD2	1:B:486:LYS:C	2.17	0.65
1:B:304:THR:HG23	1:B:305:PRO:HD2	1.77	0.65
1:A:27:TYR:OH	1:A:347:ASP:HB3	1.96	0.65
1:A:317:THR:HG22	1:A:318:ASN:OD1	1.97	0.65

Continued on next page...

*Continued from previous page...*

Atom-1	Atom-2	Interatomic distance (Å)	Clash overlap (Å)
1:A:241:GLN:OE1	1:A:370:PRO:HG3	1.97	0.65
1:B:392:TYR:CB	1:B:471:MET:HE3	2.26	0.65
1:B:415:ILE:HD12	1:B:471:MET:HE2	1.80	0.64
1:A:165:GLN:HB2	1:A:288:ILE:HG23	1.79	0.63
1:A:29:LYS:HE2	1:A:350:PHE:CD1	2.33	0.63
1:B:295:GLN:HG2	1:B:298:ASN:ND2	2.13	0.63
1:A:462:PRO:HG2	1:B:61:LYS:HG3	1.78	0.63
1:A:389:VAL:HB	1:A:478:TYR:HB2	1.80	0.63
1:A:379:GLU:HG2	1:A:380:GLU:OE1	1.98	0.62
1:B:242:LEU:HD22	1:B:247:ILE:HD12	1.81	0.62
1:B:304:THR:HG22	1:B:306:LYS:N	2.06	0.62
1:A:29:LYS:HE2	1:A:350:PHE:HD1	1.64	0.62
1:B:435:PRO:O	1:B:438:ILE:HG22	2.00	0.61
1:B:491:ASN:HB3	1:B:492:LEU:HD13	1.82	0.61
1:B:392:TYR:HB2	1:B:415:ILE:HB	1.83	0.61
1:A:92:TRP:HB3	1:A:187:PRO:HD3	1.82	0.61
1:A:227:LEU:HD12	1:A:238:VAL:HG11	1.82	0.61
1:A:344:ALA:O	1:A:348:THR:HG23	1.99	0.61
1:B:486:LYS:HE2	1:B:486:LYS:N	2.12	0.61
1:B:9:VAL:HB	1:B:33:VAL:HG22	1.83	0.60
1:B:452:SER:HA	1:B:455:TYR:CZ	2.35	0.60
1:A:197:GLY:HA3	3:A:502:SO4:O1	2.02	0.60
1:A:6:ASP:CG	1:A:29:LYS:HG3	2.22	0.60
1:A:130:GLU:HB2	1:A:136:VAL:HG23	1.83	0.60
1:B:313:GLU:OE1	1:B:356:LYS:HD2	2.02	0.60
1:A:392:TYR:HE2	1:A:451:ILE:HG12	1.66	0.59
1:A:392:TYR:CE1	1:A:474:PRO:HG3	2.37	0.59
1:A:490:SER:O	1:A:490:SER:OG	2.20	0.59
1:A:446:ARG:HB3	1:A:446:ARG:HH11	1.66	0.59
1:A:491:ASN:OD1	1:A:491:ASN:N	2.35	0.59
1:B:228:ARG:NH1	5:B:508:GOL:O2	2.34	0.59
1:A:392:TYR:HE1	1:A:474:PRO:CG	2.15	0.59
1:A:446:ARG:HB3	1:A:446:ARG:NH1	2.18	0.59
1:A:91:ASN:ND2	1:A:94:LYS:HB2	2.17	0.59
1:B:385:GLU:HG2	1:B:386:PHE:CE1	2.38	0.59
1:B:397:THR:OG1	1:B:410:LYS:HG2	2.03	0.59
1:A:163:TRP:CG	1:A:164:PRO:HD2	2.38	0.58
1:B:379:GLU:OE1	1:B:414:LYS:NZ	2.35	0.58
1:B:378:ILE:HG22	1:B:428:HIS:CE1	2.39	0.58
1:B:75:GLU:HB3	1:B:404:SER:HB2	1.84	0.58
1:A:235:ARG:O	1:A:238:VAL:HG12	2.03	0.57

*Continued on next page...*

*Continued from previous page...*

Atom-1	Atom-2	Interatomic distance (Å)	Clash overlap (Å)
1:A:326:GLY:HA3	2:A:501:FAD:O2P	2.05	0.57
1:A:392:TYR:HD1	1:A:474:PRO:HA	1.68	0.57
1:B:41:GLY:O	1:B:45:TYR:N	2.37	0.57
1:A:91:ASN:OD1	1:A:93:LYS:HD2	2.05	0.57
1:A:8:VAL:HG12	1:A:32:ALA:HB3	1.87	0.57
1:A:375:CYS:SG	1:A:445:LEU:HD22	2.45	0.57
1:B:492:LEU:HD13	1:B:492:LEU:H	1.68	0.57
1:A:231:ASP:OD2	1:A:414:LYS:HD2	2.05	0.57
1:B:90:ALA:HB1	1:B:210:TYR:CD1	2.38	0.57
1:A:37:GLN:HG3	1:A:44:PHE:HD2	1.70	0.56
1:A:95:LEU:HD22	1:A:210:TYR:CZ	2.40	0.56
1:A:176:ILE:HB	1:A:180:GLU:HB2	1.86	0.56
1:B:241:GLN:OE1	1:B:409:LYS:HA	2.06	0.56
1:A:348:THR:HG22	1:A:355:ARG:N	2.20	0.56
1:A:417:THR:HG22	1:A:424:VAL:HA	1.87	0.56
1:B:389:VAL:HB	1:B:478:TYR:HB2	1.87	0.56
1:A:163:TRP:CD2	1:A:164:PRO:HD2	2.40	0.56
1:A:13:GLY:HA2	1:A:50:GLY:CA	2.35	0.55
1:A:392:TYR:CD1	1:A:474:PRO:HA	2.41	0.55
1:B:219:LEU:HD23	1:B:220:CYS:N	2.21	0.55
1:B:237:GLU:O	1:B:241:GLN:HG3	2.06	0.55
1:A:306:LYS:H	1:A:306:LYS:HD2	1.71	0.55
1:B:92:TRP:CZ2	1:B:96:ILE:HD11	2.41	0.55
1:A:348:THR:CG2	1:A:355:ARG:H	2.19	0.55
1:B:60:LYS:O	1:B:64:VAL:HG23	2.06	0.55
1:A:174:HIS:CD2	1:A:260:LEU:HG	2.42	0.55
1:A:348:THR:CG2	1:A:354:PRO:HA	2.29	0.55
1:A:108:LYS:O	1:A:111:GLU:HB3	2.07	0.54
4:A:505:RD7:CAN	4:A:505:RD7:CAK	2.86	0.54
1:B:13:GLY:HA2	1:B:50:GLY:CA	2.38	0.54
1:B:383:ALA:HB1	1:B:481:GLY:HA2	1.88	0.54
4:B:504:RD7:CAN	4:B:504:RD7:CAK	2.86	0.54
1:B:452:SER:HA	1:B:455:TYR:CE2	2.42	0.54
1:B:411:PHE:CE2	1:B:464:SER:HB3	2.43	0.54
1:A:242:LEU:HD22	1:A:247:ILE:HD12	1.89	0.54
1:B:192:LEU:HD11	1:B:220:CYS:SG	2.48	0.54
1:A:258:VAL:HG22	1:A:268:VAL:HG22	1.90	0.54
1:B:192:LEU:HA	1:B:218:THR:O	2.07	0.54
1:A:478:TYR:CE1	1:A:483:LYS:HB2	2.43	0.54
1:B:5:PHE:CD1	1:B:5:PHE:N	2.75	0.54
1:A:440:ALA:HB3	1:B:440:ALA:HB3	1.89	0.53

*Continued on next page...*

*Continued from previous page...*

Atom-1	Atom-2	Interatomic distance (Å)	Clash overlap (Å)
1:A:37:GLN:OE1	1:A:43:PRO:HD2	2.09	0.53
1:B:299:VAL:HG12	1:B:319:VAL:HG21	1.89	0.53
1:B:4:ALA:HA	1:B:152:GLN:HB2	1.91	0.53
1:B:8:VAL:CG2	1:B:153:ALA:HB2	2.39	0.53
1:B:485:GLU:CD	1:B:485:GLU:H	2.10	0.53
1:A:278:VAL:HG21	1:A:281:VAL:HG22	1.91	0.52
1:A:221:TYR:CZ	1:A:223:ASN:HB2	2.44	0.52
1:B:492:LEU:N	1:B:492:LEU:CD1	2.73	0.52
1:A:439:GLN:HE22	1:B:459:GLY:HA2	1.73	0.52
1:B:104:LEU:HG	1:B:108:LYS:HE3	1.91	0.52
1:A:192:LEU:HD12	1:A:218:THR:O	2.09	0.52
1:B:237:GLU:OE1	1:B:240:LYS:HD2	2.10	0.51
1:B:387:GLU:H	1:B:387:GLU:CD	2.13	0.51
1:A:366:VAL:O	1:A:368:SER:N	2.39	0.51
1:A:396:PHE:CE2	1:A:398:PRO:HA	2.46	0.51
1:A:126:TRP:O	1:A:137:VAL:HA	2.11	0.51
1:A:446:ARG:HH21	1:B:456:ASN:HB3	1.75	0.51
1:B:248:GLU:C	1:B:249:ILE:HD12	2.31	0.51
1:B:411:PHE:HE1	1:B:413:ALA:HB2	1.76	0.51
1:B:167:PRO:HD3	1:B:285:ILE:CD1	2.41	0.51
1:B:391:VAL:HG11	1:B:476:TYR:CZ	2.45	0.50
1:B:484:MET:CE	1:B:487:LEU:HA	2.37	0.50
1:A:60:LYS:HG2	1:A:61:LYS:N	2.27	0.50
1:A:13:GLY:HA2	1:A:50:GLY:HA3	1.92	0.50
1:B:265:SER:C	1:B:266:LYS:HD2	2.32	0.50
1:A:160:THR:C	2:A:501:FAD:H52A	2.32	0.50
1:A:368:SER:OG	1:A:370:PRO:O	2.24	0.50
1:B:392:TYR:CZ	1:B:451:ILE:HG12	2.47	0.50
1:B:129:LEU:HD11	1:B:158:LEU:HD21	1.93	0.50
1:B:335:THR:HB	1:B:336:PRO:HD3	1.93	0.50
1:A:366:VAL:HB	1:A:372:ILE:HB	1.94	0.49
1:B:266:LYS:HD2	1:B:266:LYS:N	2.26	0.49
1:A:130:GLU:HG3	1:A:136:VAL:HG21	1.94	0.49
1:B:220:CYS:HA	1:B:250:MET:O	2.12	0.49
1:B:12:ALA:HB1	1:B:48:LEU:HD12	1.93	0.49
1:B:167:PRO:HD3	1:B:285:ILE:HD13	1.93	0.49
1:B:162:SER:HB3	1:B:327:ASP:HB3	1.95	0.48
1:B:130:GLU:HB2	1:B:136:VAL:CG1	2.41	0.48
5:A:506:GOL:O2	1:B:355:ARG:NH1	2.46	0.48
1:A:22:ASN:O	1:A:23:ALA:HB2	2.13	0.48
1:A:132:LYS:HG2	1:A:133:ASN:OD1	2.13	0.48

*Continued on next page...*

*Continued from previous page...*

Atom-1	Atom-2	Interatomic distance (Å)	Clash overlap (Å)
1:A:487:LEU:HD23	1:A:488:PRO:HD2	1.95	0.48
1:B:219:LEU:HD23	1:B:219:LEU:C	2.33	0.48
1:B:242:LEU:HD22	1:B:247:ILE:CD1	2.43	0.48
1:A:266:LYS:HD2	1:A:266:LYS:N	2.29	0.48
1:B:4:ALA:O	1:B:30:ARG:NH1	2.47	0.47
1:A:318:ASN:OD1	1:A:318:ASN:N	2.39	0.47
1:B:37:GLN:NE2	1:B:39:SER:O	2.45	0.47
1:B:233:THR:OG1	1:B:414:LYS:HE3	2.14	0.47
1:A:341:GLU:HA	1:A:357:THR:HG21	1.97	0.47
1:A:403:ILE:HD12	1:B:98:ALA:HB1	1.95	0.47
1:B:232:GLU:HA	1:B:235:ARG:HD3	1.96	0.47
1:A:44:PHE:O	1:A:46:ALA:N	2.48	0.47
1:A:219:LEU:C	1:A:219:LEU:HD23	2.34	0.47
1:A:304:THR:HB	1:A:305:PRO:HD2	1.96	0.47
1:A:434:ALA:HB3	1:A:435:PRO:HD3	1.96	0.47
1:B:92:TRP:CB	1:B:187:PRO:HD3	2.42	0.47
1:B:227:LEU:HD12	1:B:238:VAL:HG11	1.97	0.47
1:A:41:GLY:HA2	1:A:183:TYR:CZ	2.50	0.47
1:A:452:SER:HA	1:A:455:TYR:CZ	2.50	0.47
1:A:352:ASN:C	1:A:354:PRO:HD3	2.35	0.47
1:B:474:PRO:HG2	1:B:477:TYR:CZ	2.50	0.46
1:B:487:LEU:HD22	1:B:488:PRO:HD3	1.96	0.46
1:A:61:LYS:HE3	1:A:367:PHE:CE2	2.50	0.46
1:B:231:ASP:O	1:B:235:ARG:HG3	2.14	0.46
1:B:89:LYS:HB2	1:B:89:LYS:NZ	2.31	0.46
1:A:22:ASN:HB3	1:A:26:LEU:HD12	1.96	0.46
1:B:462:PRO:HA	1:B:466:GLU:OE2	2.15	0.46
1:B:256:ALA:HB3	1:B:269:THR:O	2.16	0.46
1:A:233:THR:OG1	1:A:414:LYS:HE3	2.16	0.45
1:B:408:TYR:O	1:B:410:LYS:N	2.48	0.45
1:B:486:LYS:C	1:B:486:LYS:CD	2.85	0.45
1:B:92:TRP:O	1:B:96:ILE:HG12	2.16	0.45
1:B:225:LEU:HB3	5:B:508:GOL:O3	2.16	0.45
1:A:92:TRP:CZ2	1:A:96:ILE:HD11	2.52	0.45
1:B:412:VAL:HB	1:B:430:LEU:HB3	1.98	0.45
1:B:189:ARG:HA	1:B:212:PRO:HD2	1.99	0.45
1:A:99:LYS:O	1:A:103:VAL:HG23	2.17	0.45
1:B:380:GLU:OE1	1:B:380:GLU:N	2.31	0.45
1:A:56:GLY:O	1:A:60:LYS:HB3	2.17	0.45
1:A:5:PHE:HB2	1:A:8:VAL:HG13	1.99	0.45
1:A:269:THR:HG23	1:A:275:THR:HG22	1.98	0.45

*Continued on next page...*



*Continued from previous page...*

Atom-1	Atom-2	Interatomic distance (Å)	Clash overlap (Å)
1:A:463:THR:O	1:A:466:GLU:HG2	2.17	0.45
1:B:45:TYR:OH	1:B:180:GLU:HG3	2.17	0.44
1:A:487:LEU:C	1:A:487:LEU:CD2	2.85	0.44
1:B:474:PRO:HG2	1:B:477:TYR:CE1	2.52	0.44
1:A:138:ARG:HB3	1:A:145:SER:OG	2.17	0.44
1:A:129:LEU:HD21	1:A:322:ILE:HD13	1.99	0.44
1:A:392:TYR:O	1:A:414:LYS:HA	2.17	0.44
1:A:5:PHE:C	1:A:7:LEU:N	2.71	0.44
1:A:340:ASN:OD1	1:A:357:THR:HG22	2.18	0.44
1:A:22:ASN:CB	1:A:26:LEU:HD12	2.48	0.44
1:A:60:LYS:HD2	1:A:202:GLU:OE1	2.18	0.44
1:A:306:LYS:O	1:A:308:GLY:N	2.51	0.44
1:A:29:LYS:HG2	1:A:350:PHE:CE1	2.52	0.43
1:A:220:CYS:HA	1:A:250:MET:O	2.18	0.43
1:B:95:LEU:HD22	1:B:210:TYR:CE2	2.53	0.43
1:B:401:HIS:HA	1:B:404:SER:OG	2.18	0.43
1:B:221:TYR:HE1	6:B:505:EPE:H32	1.84	0.43
1:A:335:THR:HB	1:A:336:PRO:HD3	2.01	0.43
1:A:392:TYR:HE2	1:A:451:ILE:CG1	2.28	0.43
1:A:31:VAL:N	1:A:119:GLY:O	2.48	0.43
1:A:315:SER:HB2	1:A:345:LEU:HD13	1.99	0.43
1:B:8:VAL:HG23	1:B:153:ALA:HB2	2.00	0.43
1:A:6:ASP:O	1:A:350:PHE:HZ	2.02	0.43
1:A:430:LEU:HD12	1:A:431:GLY:N	2.34	0.43
1:A:314:PHE:O	1:A:315:SER:HB2	2.18	0.43
1:B:75:GLU:CB	1:B:404:SER:HB2	2.49	0.43
1:A:289:PRO:HG3	1:A:308:GLY:CA	2.48	0.43
1:A:45:TYR:OH	1:A:180:GLU:HG3	2.19	0.42
1:B:391:VAL:HG11	1:B:476:TYR:OH	2.19	0.42
1:A:35:ASP:OD1	1:A:36:VAL:N	2.50	0.42
1:A:94:LYS:O	1:A:94:LYS:HD3	2.19	0.42
1:B:108:LYS:O	1:B:111:GLU:O	2.38	0.42
1:A:3:LYS:HB3	1:A:3:LYS:HE2	1.77	0.42
1:A:160:THR:OG1	1:A:328:ILE:HD12	2.19	0.42
1:A:166:MET:HE3	1:A:172:ILE:HD11	2.01	0.42
1:A:289:PRO:HG3	1:A:308:GLY:HA2	2.02	0.42
1:A:317:THR:HG22	1:A:318:ASN:H	1.84	0.42
1:A:53:VAL:O	1:A:103:VAL:HG13	2.19	0.42
1:A:299:VAL:HG12	1:A:299:VAL:O	2.19	0.42
1:A:458:ILE:HG23	1:B:336:PRO:HB2	2.01	0.42
1:A:93:LYS:HD2	1:A:93:LYS:N	2.27	0.42

*Continued on next page...*



Continued from previous page...

Atom-1	Atom-2	Interatomic distance (Å)	Clash overlap (Å)
1:A:104:LEU:HG	1:A:108:LYS:HE3	2.02	0.42
1:A:124:LEU:O	1:A:148:LYS:HE2	2.19	0.42
1:A:191:VAL:CG1	1:A:217:VAL:HG22	2.50	0.42
1:B:221:TYR:CZ	1:B:223:ASN:HB2	2.54	0.42
1:B:331:ARG:HB3	1:B:332:LEU:H	1.64	0.42
1:B:326:GLY:HA3	2:B:501:FAD:O2P	2.19	0.42
1:A:396:PHE:HE2	1:A:398:PRO:HA	1.85	0.42
1:B:8:VAL:HG21	1:B:153:ALA:HB2	2.01	0.42
1:B:231:ASP:OD2	1:B:414:LYS:HD2	2.20	0.42
1:B:478:TYR:CE1	1:B:483:LYS:HB2	2.55	0.42
1:A:104:LEU:HD12	1:A:107:ASN:HB2	2.02	0.41
1:B:242:LEU:CD2	1:B:247:ILE:HD12	2.49	0.41
1:A:188:PRO:HB3	1:A:280:VAL:CG2	2.51	0.41
1:A:299:VAL:HG12	1:A:319:VAL:HG21	2.01	0.41
1:A:439:GLN:HG2	1:B:465:ALA:HB1	2.01	0.41
1:B:21:TRP:CE2	1:B:25:THR:HG21	2.55	0.41
1:B:22:ASN:O	1:B:26:LEU:HB2	2.21	0.41
1:B:385:GLU:HG2	1:B:386:PHE:CD1	2.56	0.41
1:B:161:GLY:HA2	1:B:327:ASP:HB2	2.03	0.41
1:A:62:LEU:HD23	1:A:62:LEU:HA	1.90	0.41
1:A:340:ASN:C	1:A:357:THR:HG21	2.41	0.41
1:B:212:PRO:HB2	1:B:213:PRO:HD2	2.02	0.41
1:A:3:LYS:HE2	1:A:3:LYS:CA	2.50	0.41
1:B:249:ILE:HD12	1:B:249:ILE:N	2.35	0.41
1:B:312:ASP:OD2	1:B:316:ARG:HB2	2.21	0.41
1:A:71:ASP:O	1:A:75:GLU:HG3	2.21	0.41
1:B:379:GLU:OE2	1:B:476:TYR:OH	2.32	0.41
1:B:407:LYS:HE3	1:B:407:LYS:HB2	1.68	0.41
1:B:433:GLY:O	1:B:437:ILE:HG13	2.21	0.40
1:A:3:LYS:HE2	1:A:3:LYS:HA	2.02	0.40
1:A:294:LEU:HB3	1:A:296:LEU:HD21	2.04	0.40
2:A:501:FAD:H9	2:A:501:FAD:H1'1	1.87	0.40
1:B:316:ARG:HG2	1:B:323:TYR:CE2	2.56	0.40

There are no symmetry-related clashes.

## 5.3 Torsion angles [i](#)

### 5.3.1 Protein backbone [i](#)

In the following table, the Percentiles column shows the percent Ramachandran outliers of the chain as a percentile score with respect to all X-ray entries followed by that with respect to entries of similar resolution.

The Analysed column shows the number of residues for which the backbone conformation was analysed, and the total number of residues.

Mol	Chain	Analysed	Favoured	Allowed	Outliers	Percentiles	
1	A	490/495 (99%)	442 (90%)	43 (9%)	5 (1%)	15	44
1	B	490/495 (99%)	461 (94%)	24 (5%)	5 (1%)	15	44
All	All	980/990 (99%)	903 (92%)	67 (7%)	10 (1%)	15	44

All (10) Ramachandran outliers are listed below:

Mol	Chain	Res	Type
1	A	23	ALA
1	B	488	PRO
1	A	307	GLY
1	B	490	SER
1	A	45	TYR
1	B	45	TYR
1	B	409	LYS
1	A	387	GLU
1	B	487	LEU
1	A	366	VAL

### 5.3.2 Protein sidechains [i](#)

In the following table, the Percentiles column shows the percent sidechain outliers of the chain as a percentile score with respect to all X-ray entries followed by that with respect to entries of similar resolution.

The Analysed column shows the number of residues for which the sidechain conformation was analysed, and the total number of residues.

Mol	Chain	Analysed	Rotameric	Outliers	Percentiles	
1	A	405/407 (100%)	382 (94%)	23 (6%)	20	50
1	B	405/407 (100%)	389 (96%)	16 (4%)	31	65
All	All	810/814 (100%)	771 (95%)	39 (5%)	25	58

All (39) residues with a non-rotameric sidechain are listed below:

Mol	Chain	Res	Type
1	A	1	MET
1	A	93	LYS
1	A	128	SER
1	A	132	LYS
1	A	232	GLU
1	A	236	GLU
1	A	317	THR
1	A	318	ASN
1	A	331	ARG
1	A	347	ASP
1	A	374	THR
1	A	387	GLU
1	A	399	LEU
1	A	407	LYS
1	A	479	VAL
1	A	480	LYS
1	A	482	GLU
1	A	484	MET
1	A	487	LEU
1	A	489	ASP
1	A	490	SER
1	A	491	ASN
1	A	492	LEU
1	B	1	MET
1	B	2	SER
1	B	5	PHE
1	B	57	CYS
1	B	60	LYS
1	B	89	LYS
1	B	228	ARG
1	B	295	GLN
1	B	331	ARG
1	B	374	THR
1	B	400	MET
1	B	473	THR
1	B	486	LYS
1	B	490	SER
1	B	491	ASN
1	B	492	LEU

Sometimes sidechains can be flipped to improve hydrogen bonding and reduce clashes. All (1) such sidechains are listed below:

Mol	Chain	Res	Type
1	B	298	ASN

### 5.3.3 RNA [i](#)

There are no RNA molecules in this entry.

### 5.4 Non-standard residues in protein, DNA, RNA chains [i](#)

There are no non-standard protein/DNA/RNA residues in this entry.

### 5.5 Carbohydrates [i](#)

There are no monosaccharides in this entry.

### 5.6 Ligand geometry [i](#)

15 ligands are modelled in this entry.

In the following table, the Counts columns list the number of bonds (or angles) for which Mogul statistics could be retrieved, the number of bonds (or angles) that are observed in the model and the number of bonds (or angles) that are defined in the Chemical Component Dictionary. The Link column lists molecule types, if any, to which the group is linked. The Z score for a bond length (or angle) is the number of standard deviations the observed value is removed from the expected value. A bond length (or angle) with  $|Z| > 2$  is considered an outlier worth inspection. RMSZ is the root-mean-square of all Z scores of the bond lengths (or angles).

Mol	Type	Chain	Res	Link	Bond lengths			Bond angles		
					Counts	RMSZ	# Z  > 2	Counts	RMSZ	# Z  > 2
6	EPE	B	505	-	15,15,15	0.84	1 (6%)	18,20,20	1.73	6 (33%)
5	GOL	A	506	-	5,5,5	0.26	0	5,5,5	0.25	0
5	GOL	B	506	-	5,5,5	0.94	0	5,5,5	0.97	0
3	SO4	A	503	-	4,4,4	0.15	0	6,6,6	0.04	0
2	FAD	B	501	-	53,58,58	0.45	0	68,89,89	0.51	2 (2%)
3	SO4	A	507	-	4,4,4	0.13	0	6,6,6	0.06	0
5	GOL	B	507	-	5,5,5	0.93	0	5,5,5	1.00	0
3	SO4	A	504	-	4,4,4	0.14	0	6,6,6	0.06	0
4	RD7	B	504	-	35,38,38	2.28	7 (20%)	35,54,54	1.00	3 (8%)
5	GOL	B	508	-	5,5,5	0.94	0	5,5,5	0.99	0
4	RD7	A	505	-	35,38,38	2.29	8 (22%)	35,54,54	1.00	3 (8%)
6	EPE	B	503	-	15,15,15	0.85	1 (6%)	18,20,20	1.71	5 (27%)
3	SO4	A	502	-	4,4,4	0.15	0	6,6,6	0.06	0

Mol	Type	Chain	Res	Link	Bond lengths			Bond angles		
					Counts	RMSZ	# Z  > 2	Counts	RMSZ	# Z  > 2
3	SO4	B	502	-	4,4,4	0.14	0	6,6,6	0.06	0
2	FAD	A	501	-	53,58,58	0.45	0	68,89,89	0.50	1 (1%)

In the following table, the Chirals column lists the number of chiral outliers, the number of chiral centers analysed, the number of these observed in the model and the number defined in the Chemical Component Dictionary. Similar counts are reported in the Torsion and Rings columns. '-' means no outliers of that kind were identified.

Mol	Type	Chain	Res	Link	Chirals	Torsions	Rings
6	EPE	B	505	-	-	6/9/19/19	0/1/1/1
5	GOL	A	506	-	-	0/4/4/4	-
5	GOL	B	506	-	-	1/4/4/4	-
5	GOL	B	508	-	-	2/4/4/4	-
2	FAD	B	501	-	-	8/30/50/50	0/6/6/6
5	GOL	B	507	-	-	1/4/4/4	-
6	EPE	B	503	-	-	7/9/19/19	0/1/1/1
4	RD7	B	504	-	-	3/15/46/46	0/6/6/6
4	RD7	A	505	-	-	1/15/46/46	0/6/6/6
2	FAD	A	501	-	-	6/30/50/50	0/6/6/6

All (17) bond length outliers are listed below:

Mol	Chain	Res	Type	Atoms	Z	Observed(Å)	Ideal(Å)
4	B	504	RD7	CAP-SAM	-7.43	1.63	1.73
4	A	505	RD7	CAP-SAM	-7.40	1.63	1.73
4	A	505	RD7	CAL-SAM	-5.76	1.63	1.74
4	B	504	RD7	CAL-SAM	-5.75	1.63	1.74
4	B	504	RD7	CAW-NAV	-4.89	1.33	1.39
4	A	505	RD7	CAW-NAV	-4.87	1.33	1.39
4	A	505	RD7	CAX-CAW	-3.75	1.33	1.41
4	B	504	RD7	CAX-CAW	-3.71	1.33	1.41
4	A	505	RD7	CAR-CAS	-3.70	1.33	1.42
4	B	504	RD7	CAR-CAS	-3.66	1.33	1.42
4	B	504	RD7	CAS-CAW	-3.41	1.33	1.41
4	A	505	RD7	CAS-CAW	-3.40	1.33	1.41
4	B	504	RD7	CAU-NAV	-3.34	1.33	1.38
4	A	505	RD7	CAU-NAV	-3.28	1.33	1.38
6	B	503	EPE	C10-S	2.81	1.81	1.77
6	B	505	EPE	C10-S	2.67	1.81	1.77
4	A	505	RD7	CAA-CAF	-2.10	1.52	1.54

All (20) bond angle outliers are listed below:

Mol	Chain	Res	Type	Atoms	Z	Observed(°)	Ideal(°)
6	B	505	EPE	C7-N4-C5	3.65	120.56	111.23
6	B	503	EPE	C5-N4-C3	3.35	116.38	108.83
6	B	505	EPE	C5-N4-C3	3.27	116.19	108.83
6	B	505	EPE	C7-N4-C3	3.06	119.07	111.23
6	B	503	EPE	C7-N4-C3	2.75	118.28	111.23
6	B	503	EPE	C7-N4-C5	2.75	118.27	111.23
6	B	503	EPE	O2S-S-C10	2.66	110.12	106.92
6	B	503	EPE	O1S-S-C10	2.57	110.01	106.92
6	B	505	EPE	O1S-S-C10	2.34	109.73	106.92
2	B	501	FAD	C5A-C6A-N6A	2.27	123.81	120.35
2	A	501	FAD	C5A-C6A-N6A	2.27	123.80	120.35
4	B	504	RD7	CAN-CAL-SAM	-2.23	109.78	112.00
4	A	505	RD7	CAN-CAL-SAM	-2.23	109.78	112.00
4	B	504	RD7	CAB-CAA-CAF	-2.19	109.44	113.15
4	B	504	RD7	CAD-CAE-CAF	-2.18	109.46	113.15
4	A	505	RD7	CAB-CAA-CAF	-2.16	109.49	113.15
4	A	505	RD7	CAD-CAE-CAF	-2.15	109.50	113.15
6	B	505	EPE	C6-N1-C2	2.05	113.43	108.83
6	B	505	EPE	O3S-S-C10	2.03	109.06	105.77
2	B	501	FAD	P-O3P-PA	-2.03	125.87	132.83

There are no chirality outliers.

All (35) torsion outliers are listed below:

Mol	Chain	Res	Type	Atoms
2	A	501	FAD	C5B-O5B-PA-O1A
2	A	501	FAD	O4B-C4B-C5B-O5B
2	A	501	FAD	C3B-C4B-C5B-O5B
2	B	501	FAD	C1'-C2'-C3'-C4'
4	A	505	RD7	CAL-CAF-NAG-CAH
4	B	504	RD7	CBA-CAZ-NAV-CAU
4	B	504	RD7	CBA-CAZ-NAV-CAW
5	B	508	GOL	O1-C1-C2-O2
6	B	503	EPE	C9-C10-S-O2S
6	B	503	EPE	C9-C10-S-O3S
6	B	505	EPE	C8-C7-N4-C5
6	B	505	EPE	C9-C10-S-O1S
2	B	501	FAD	O4B-C4B-C5B-O5B
2	B	501	FAD	C3B-C4B-C5B-O5B
4	B	504	RD7	NAV-CAZ-CBA-NBB
6	B	503	EPE	C8-C7-N4-C3

*Continued on next page...*

*Continued from previous page...*

Mol	Chain	Res	Type	Atoms
5	B	508	GOL	O1-C1-C2-C3
2	B	501	FAD	O2'-C2'-C3'-O3'
6	B	505	EPE	C9-C10-S-O3S
2	B	501	FAD	O2'-C2'-C3'-C4'
6	B	505	EPE	C10-C9-N1-C2
6	B	505	EPE	C10-C9-N1-C6
2	A	501	FAD	C5B-O5B-PA-O3P
2	A	501	FAD	C5B-O5B-PA-O2A
2	B	501	FAD	C1'-C2'-C3'-O3'
6	B	503	EPE	C9-C10-S-O1S
6	B	505	EPE	C9-C10-S-O2S
6	B	503	EPE	N4-C7-C8-O8
6	B	503	EPE	C10-C9-N1-C2
6	B	503	EPE	C10-C9-N1-C6
5	B	506	GOL	O1-C1-C2-O2
2	B	501	FAD	P-O3P-PA-O1A
5	B	507	GOL	O1-C1-C2-C3
2	A	501	FAD	O3'-C3'-C4'-C5'
2	B	501	FAD	O4'-C4'-C5'-O5'

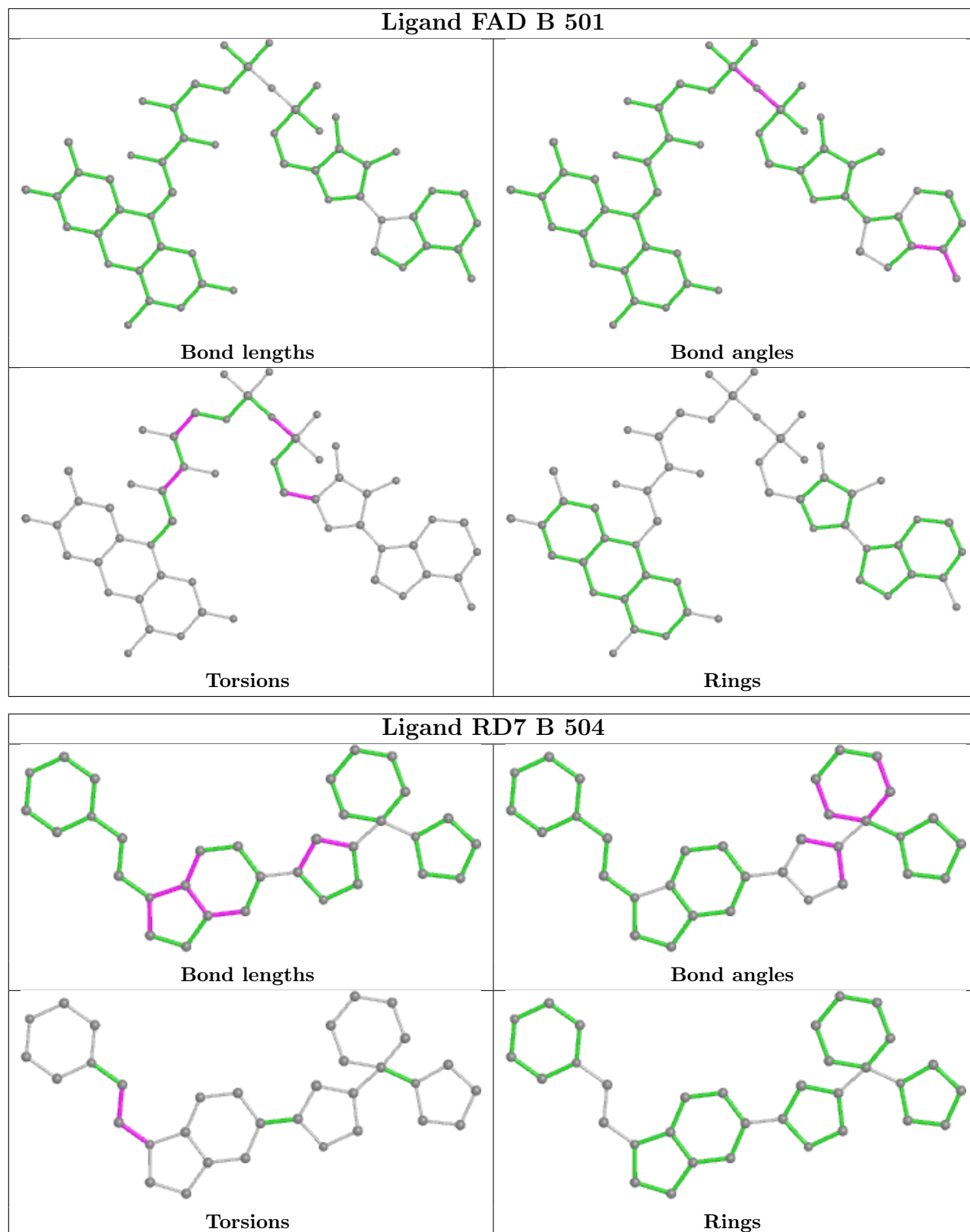
There are no ring outliers.

8 monomers are involved in 11 short contacts:

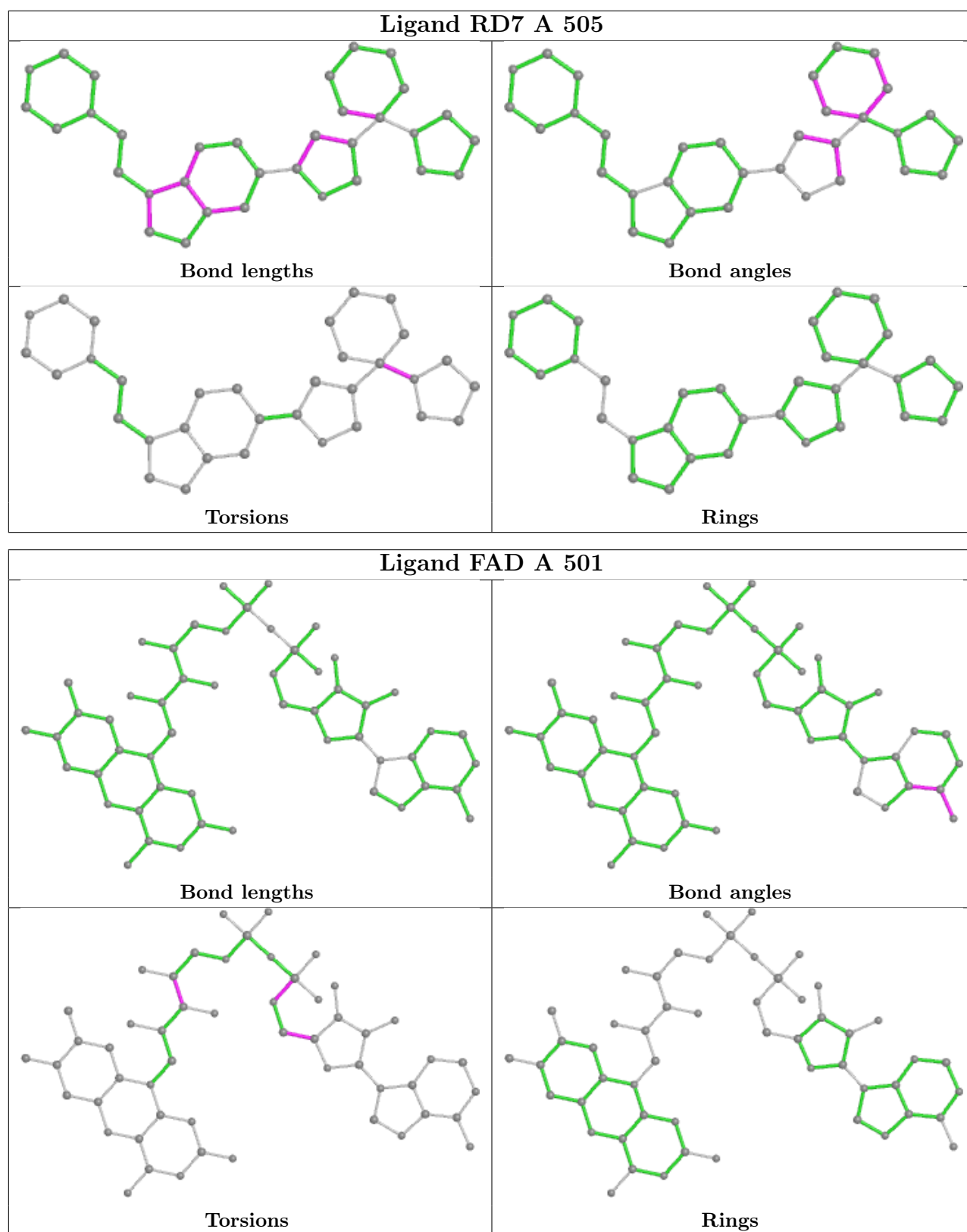
Mol	Chain	Res	Type	Clashes	Symm-Clashes
6	B	505	EPE	1	0
5	A	506	GOL	1	0
2	B	501	FAD	1	0
4	B	504	RD7	1	0
5	B	508	GOL	2	0
4	A	505	RD7	1	0
3	A	502	SO4	1	0
2	A	501	FAD	3	0

The following is a two-dimensional graphical depiction of Mogul quality analysis of bond lengths, bond angles, torsion angles, and ring geometry for all instances of the Ligand of Interest. In addition, ligands with molecular weight > 250 and outliers as shown on the validation Tables will also be included. For torsion angles, if less than 5% of the Mogul distribution of torsion angles is within 10 degrees of the torsion angle in question, then that torsion angle is considered an outlier. Any bond that is central to one or more torsion angles identified as an outlier by Mogul will be highlighted in the graph. For rings, the root-mean-square deviation (RMSD) between the ring in question and similar rings identified by Mogul is calculated over all ring torsion angles. If the average RMSD is greater than 60 degrees and the minimal RMSD between the ring in question and

any Mogul-identified rings is also greater than 60 degrees, then that ring is considered an outlier. The outliers are highlighted in purple. The color gray indicates Mogul did not find sufficient equivalents in the CSD to analyse the geometry.







## 5.7 Other polymers [\(i\)](#)

There are no such residues in this entry.

## 5.8 Polymer linkage issues

There are no chain breaks in this entry.

## 6 Fit of model and data

### 6.1 Protein, DNA and RNA chains

In the following table, the column labelled ‘#RSRZ > 2’ contains the number (and percentage) of RSRZ outliers, followed by percent RSRZ outliers for the chain as percentile scores relative to all X-ray entries and entries of similar resolution. The OWAB column contains the minimum, median, 95<sup>th</sup> percentile and maximum values of the occupancy-weighted average B-factor per residue. The column labelled ‘Q < 0.9’ lists the number of (and percentage) of residues with an average occupancy less than 0.9.

Mol	Chain	Analysed	<RSRZ>	#RSRZ>2	OWAB(Å <sup>2</sup> )	Q<0.9
1	A	492/495 (99%)	0.40	34 (6%) 16 10	52, 90, 137, 211	0
1	B	492/495 (99%)	0.38	27 (5%) 25 16	49, 79, 126, 197	0
All	All	984/990 (99%)	0.39	61 (6%) 20 13	49, 85, 131, 211	0

All (61) RSRZ outliers are listed below:

Mol	Chain	Res	Type	RSRZ
1	A	5	PHE	7.9
1	B	488	PRO	6.4
1	A	492	LEU	6.3
1	B	491	ASN	6.2
1	A	491	ASN	5.8
1	B	483	LYS	5.2
1	B	490	SER	5.2
1	A	323	TYR	4.8
1	A	490	SER	4.7
1	B	489	ASP	4.6
1	A	156	ILE	4.6
1	A	301	VAL	4.3
1	A	276	LEU	4.3
1	B	484	MET	4.1
1	B	481	GLY	4.1
1	A	2	SER	4.1
1	A	114	PHE	4.0
1	A	30	ARG	3.8
1	B	492	LEU	3.8
1	B	482	GLU	3.7
1	A	350	PHE	3.6
1	A	302	LYS	3.6
1	B	479	VAL	3.5
1	A	8	VAL	3.4

*Continued on next page...*

*Continued from previous page...*

Mol	Chain	Res	Type	RSRZ
1	B	1	MET	3.4
1	A	483	LYS	3.3
1	B	4	ALA	3.2
1	B	386	PHE	3.1
1	B	3	LYS	3.0
1	A	481	GLY	2.8
1	A	482	GLU	2.8
1	A	390	ALA	2.8
1	B	389	VAL	2.8
1	A	345	LEU	2.8
1	B	478	TYR	2.8
1	A	303	LEU	2.7
1	A	480	LYS	2.7
1	B	454	PHE	2.7
1	B	487	LEU	2.6
1	A	476	TYR	2.6
1	B	7	LEU	2.6
1	A	479	VAL	2.5
1	B	2	SER	2.5
1	B	388	LYS	2.5
1	B	419	HIS	2.5
1	B	5	PHE	2.5
1	A	141	ALA	2.5
1	A	4	ALA	2.4
1	A	399	LEU	2.4
1	B	275	THR	2.4
1	B	250	MET	2.3
1	A	317	THR	2.3
1	B	153	ALA	2.2
1	A	123	PHE	2.2
1	A	478	TYR	2.1
1	A	270	PHE	2.1
1	A	386	PHE	2.1
1	A	349	VAL	2.1
1	A	57	CYS	2.1
1	A	52	CYS	2.0
1	B	383	ALA	2.0

## 6.2 Non-standard residues in protein, DNA, RNA chains

There are no non-standard protein/DNA/RNA residues in this entry.

### 6.3 Carbohydrates [i](#)

There are no monosaccharides in this entry.

### 6.4 Ligands [i](#)

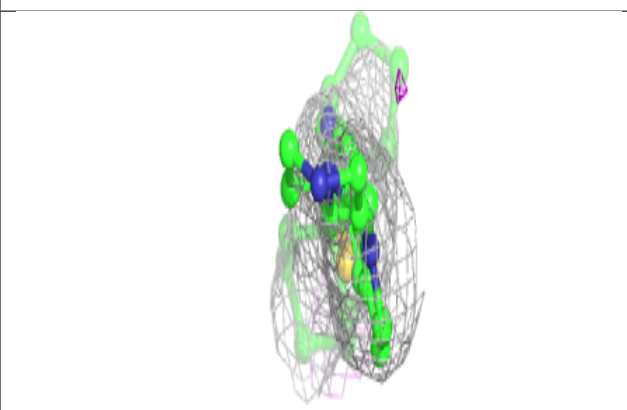
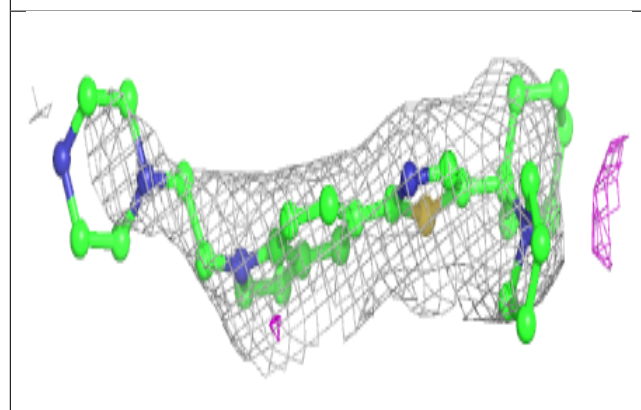
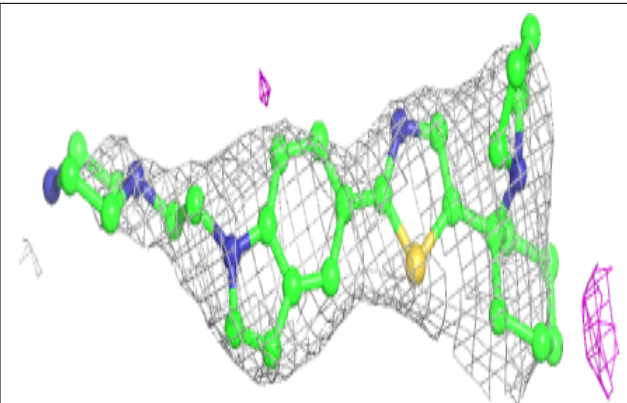
In the following table, the Atoms column lists the number of modelled atoms in the group and the number defined in the chemical component dictionary. The B-factors column lists the minimum, median, 95<sup>th</sup> percentile and maximum values of B factors of atoms in the group. The column labelled 'Q< 0.9' lists the number of atoms with occupancy less than 0.9.

Mol	Type	Chain	Res	Atoms	RSCC	RSR	B-factors(Å <sup>2</sup> )	Q<0.9
3	SO4	A	504	5/5	0.59	0.26	200,201,202,210	0
3	SO4	B	502	5/5	0.75	0.38	196,196,202,205	0
6	EPE	B	505	15/15	0.76	0.24	116,148,177,181	0
5	GOL	A	506	6/6	0.79	0.25	113,135,138,138	0
5	GOL	B	508	6/6	0.83	0.18	120,143,165,166	0
4	RD7	A	505	33/33	0.83	0.27	133,157,168,169	0
5	GOL	B	506	6/6	0.86	0.24	112,135,150,158	0
3	SO4	A	507	5/5	0.89	0.31	156,157,159,162	0
4	RD7	B	504	33/33	0.89	0.27	101,138,160,163	0
3	SO4	A	502	5/5	0.89	0.32	130,130,141,154	0
5	GOL	B	507	6/6	0.90	0.13	127,152,160,164	0
3	SO4	A	503	5/5	0.93	0.12	131,133,138,150	0
2	FAD	A	501	53/53	0.95	0.22	68,86,95,106	0
2	FAD	B	501	53/53	0.95	0.22	37,59,84,92	0
6	EPE	B	503	15/15	0.96	0.19	88,93,115,119	0

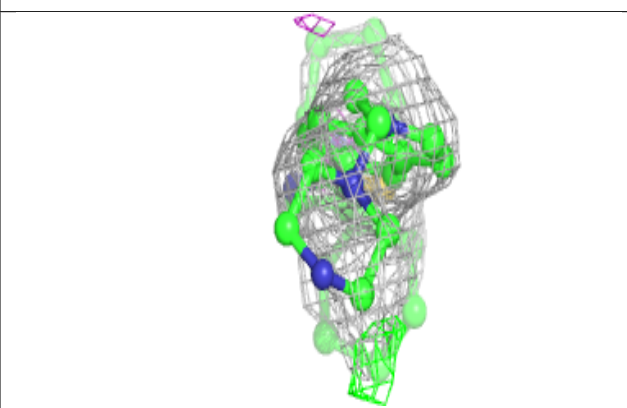
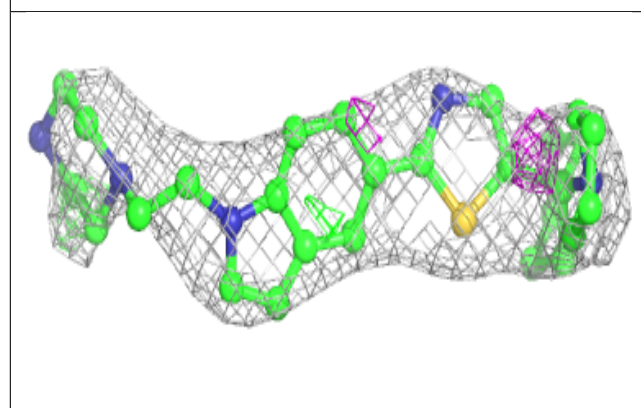
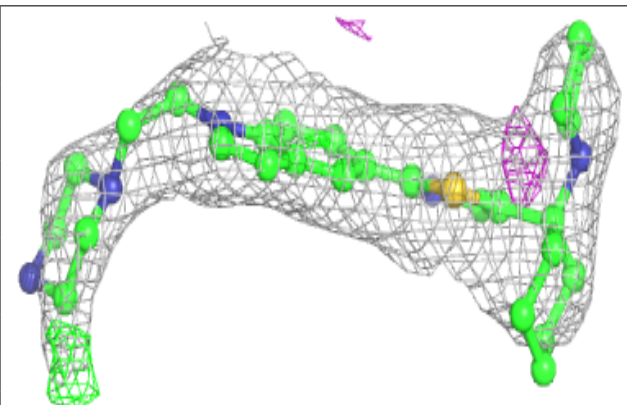
The following is a graphical depiction of the model fit to experimental electron density of all instances of the Ligand of Interest. In addition, ligands with molecular weight > 250 and outliers as shown on the geometry validation Tables will also be included. Each fit is shown from different orientation to approximate a three-dimensional view.

**Electron density around RD7 A 505:**

$2mF_o-DF_c$  (at 0.7 rmsd) in gray  
 $mF_o-DF_c$  (at 3 rmsd) in purple (negative)  
and green (positive)

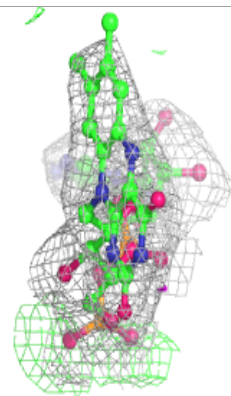
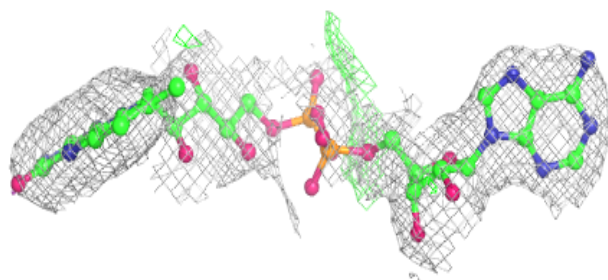
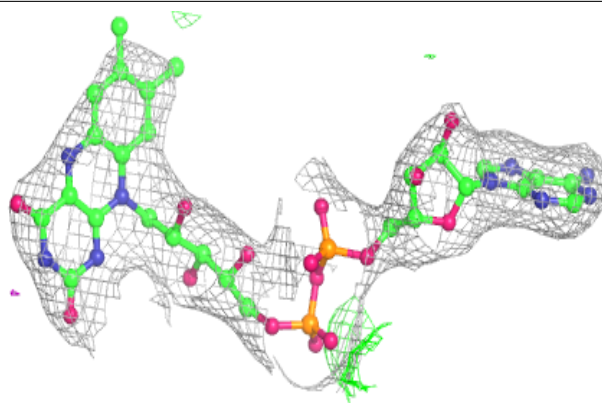
**Electron density around RD7 B 504:**

$2mF_o-DF_c$  (at 0.7 rmsd) in gray  
 $mF_o-DF_c$  (at 3 rmsd) in purple (negative)  
and green (positive)

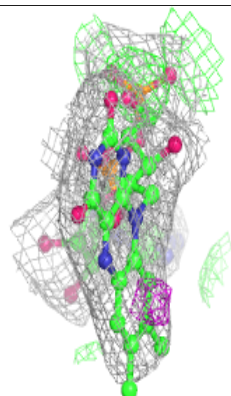
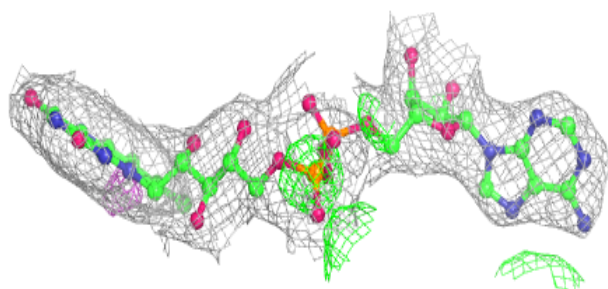
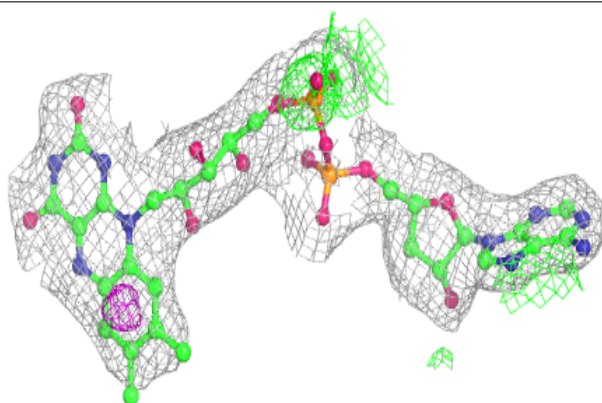


**Electron density around FAD A 501:**

$2mF_o-DF_c$  (at 0.7 rmsd) in gray  
 $mF_o-DF_c$  (at 3 rmsd) in purple (negative)  
and green (positive)

**Electron density around FAD B 501:**

$2mF_o-DF_c$  (at 0.7 rmsd) in gray  
 $mF_o-DF_c$  (at 3 rmsd) in purple (negative)  
and green (positive)



## 6.5 Other polymers [i](#)

There are no such residues in this entry.