



# Full wwPDB X-ray Structure Validation Report ⓘ

Dec 3, 2023 – 12:35 pm GMT

PDB ID : 2BUR  
Title : Crystal Structure Of Wild-Type Protocatechuate 3,4-Dioxygenase from Acinetobacter Sp. ADP1 in Complex with 4-hydroxybenzoate  
Authors : Vetting, M.W.; Valley, M.P.; D'Argenio, D.A.; Ornston, L.N.; Lipscomb, J.D.; Ohlendorf, D.H.  
Deposited on : 2005-06-17  
Resolution : 1.80 Å(reported)

This is a Full wwPDB X-ray Structure Validation Report for a publicly released PDB entry.

We welcome your comments at [validation@mail.wwpdb.org](mailto:validation@mail.wwpdb.org)

A user guide is available at

<https://www.wwpdb.org/validation/2017/XrayValidationReportHelp>

with specific help available everywhere you see the ⓘ symbol.

The types of validation reports are described at

<http://www.wwpdb.org/validation/2017/FAQs#types>.

---

The following versions of software and data (see [references ⓘ](#)) were used in the production of this report:

MolProbity : **FAILED**  
Mogul : 1.8.4, CSD as541be (2020)  
Xtriage (Phenix) : 1.13  
EDS : 2.36  
Percentile statistics : 20191225.v01 (using entries in the PDB archive December 25th 2019)  
Refmac : 5.8.0158  
CCP4 : 7.0.044 (Gargrove)  
Ideal geometry (proteins) : Engh & Huber (2001)  
Ideal geometry (DNA, RNA) : Parkinson et al. (1996)  
Validation Pipeline (wwPDB-VP) : 2.36

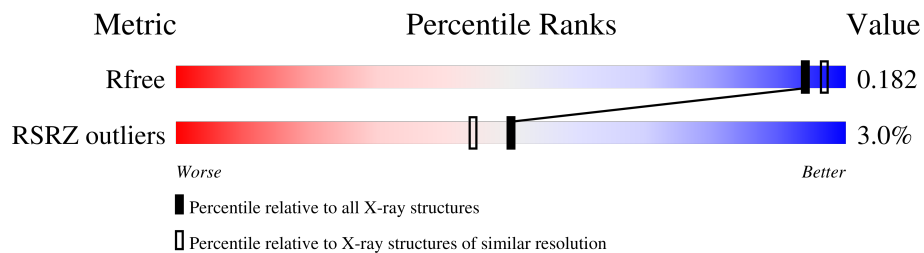
# 1 Overall quality at a glance

The following experimental techniques were used to determine the structure:

*X-RAY DIFFRACTION*

The reported resolution of this entry is 1.80 Å.

Percentile scores (ranging between 0-100) for global validation metrics of the entry are shown in the following graphic. The table shows the number of entries on which the scores are based.



Metric	Whole archive (#Entries)	Similar resolution (#Entries, resolution range(Å))
$R_{free}$	130704	5950 (1.80-1.80)
RSRZ outliers	127900	5850 (1.80-1.80)

MolProbity failed to run properly - the sequence quality summary graphics cannot be shown.

## 2 Entry composition [i](#)

There are 5 unique types of molecules in this entry. The entry contains 3818 atoms, of which 0 are hydrogens and 0 are deuteriums.

In the tables below, the ZeroOcc column contains the number of atoms modelled with zero occupancy, the AltConf column contains the number of residues with at least one atom in alternate conformation and the Trace column contains the number of residues modelled with at most 2 atoms.

- Molecule 1 is a protein called PROTOCATECHUATE 3,4-DIOXYGENASE ALPHA CHAIN.

Mol	Chain	Residues	Atoms				ZeroOcc	AltConf	Trace
			Total	C	N	O			
1	A	202	1602	1010	285	307	0	0	0

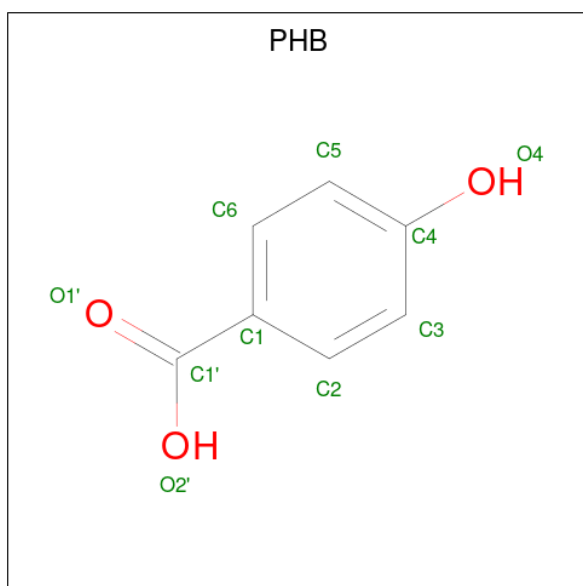
- Molecule 2 is a protein called PROTOCATECHUATE 3,4-DIOXYGENASE BETA CHAIN.

Mol	Chain	Residues	Atoms					ZeroOcc	AltConf	Trace
			Total	C	N	O	S			
2	B	238	1938	1233	346	354	5	0	1	0

- Molecule 3 is FE (III) ION (three-letter code: FE) (formula: Fe).

Mol	Chain	Residues	Atoms		ZeroOcc	AltConf
			Total	Fe		
3	B	1	1	1	0	0

- Molecule 4 is P-HYDROXYBENZOIC ACID (three-letter code: PHB) (formula: C<sub>7</sub>H<sub>6</sub>O<sub>3</sub>).



Mol	Chain	Residues	Atoms			ZeroOcc	AltConf
4	B	1	Total	C	O	0	0
			10	7	3		

- Molecule 5 is water.

Mol	Chain	Residues	Atoms		ZeroOcc	AltConf
5	A	96	Total	O	0	0
			96	96		
5	B	171	Total	O	0	0
			171	171		

MolProbity failed to run properly - this section is therefore empty.

### 3 Data and refinement statistics

Property	Value	Source
Space group	I 2 3	Depositor
Cell constants a, b, c, $\alpha$ , $\beta$ , $\gamma$	144.90Å 144.90Å 144.90Å 90.00° 90.00° 90.00°	Depositor
Resolution (Å)	30.00 – 1.80 32.40 – 1.79	Depositor EDS
% Data completeness (in resolution range)	99.5 (30.00-1.80) 99.7 (32.40-1.79)	Depositor EDS
$R_{merge}$	0.04	Depositor
$R_{sym}$	(Not available)	Depositor
$\langle I/\sigma(I) \rangle$ <sup>1</sup>	6.48 (at 1.79Å)	Xtrriage
Refinement program	CNS 1.0	Depositor
R, $R_{free}$	0.163 , 0.193 0.154 , 0.182	Depositor DCC
$R_{free}$ test set	2402 reflections (5.06%)	wwPDB-VP
Wilson B-factor (Å <sup>2</sup> )	23.0	Xtrriage
Anisotropy	0.000	Xtrriage
Bulk solvent $k_{sol}$ (e/Å <sup>3</sup> ), $B_{sol}$ (Å <sup>2</sup> )	0.33 , 47.5	EDS
L-test for twinning <sup>2</sup>	$\langle  L  \rangle = 0.42$ , $\langle L^2 \rangle = 0.25$	Xtrriage
Estimated twinning fraction	0.010 for -l,-k,-h	Xtrriage
$F_o, F_c$ correlation	0.97	EDS
Total number of atoms	3818	wwPDB-VP
Average B, all atoms (Å <sup>2</sup> )	24.0	wwPDB-VP

Xtrriage's analysis on translational NCS is as follows: *The largest off-origin peak in the Patterson function is 3.03% of the height of the origin peak. No significant pseudotranslation is detected.*

<sup>1</sup>Intensities estimated from amplitudes.

<sup>2</sup>Theoretical values of  $\langle |L| \rangle$ ,  $\langle L^2 \rangle$  for acentric reflections are 0.5, 0.333 respectively for untwinned datasets, and 0.375, 0.2 for perfectly twinned datasets.

## 4 Model quality [i](#)

### 4.1 Standard geometry [i](#)

MolProbity failed to run properly - this section is therefore empty.

### 4.2 Too-close contacts [i](#)

MolProbity failed to run properly - this section is therefore empty.

### 4.3 Torsion angles [i](#)

#### 4.3.1 Protein backbone [i](#)

MolProbity failed to run properly - this section is therefore empty.

#### 4.3.2 Protein sidechains [i](#)

MolProbity failed to run properly - this section is therefore empty.

#### 4.3.3 RNA [i](#)

MolProbity failed to run properly - this section is therefore empty.

### 4.4 Non-standard residues in protein, DNA, RNA chains [i](#)

There are no non-standard protein/DNA/RNA residues in this entry.

### 4.5 Carbohydrates [i](#)

There are no monosaccharides in this entry.

### 4.6 Ligand geometry [i](#)

Of 2 ligands modelled in this entry, 1 is monoatomic - leaving 1 for Mogul analysis.

In the following table, the Counts columns list the number of bonds (or angles) for which Mogul statistics could be retrieved, the number of bonds (or angles) that are observed in the model and the number of bonds (or angles) that are defined in the Chemical Component Dictionary. The Link column lists molecule types, if any, to which the group is linked. The Z score for a bond

length (or angle) is the number of standard deviations the observed value is removed from the expected value. A bond length (or angle) with  $|Z| > 2$  is considered an outlier worth inspection. RMSZ is the root-mean-square of all Z scores of the bond lengths (or angles).

Mol	Type	Chain	Res	Link	Bond lengths			Bond angles		
					Counts	RMSZ	# Z  > 2	Counts	RMSZ	# Z  > 2
4	PHB	B	999	3	10,10,10	0.97	1 (10%)	13,13,13	0.82	0

In the following table, the Chirals column lists the number of chiral outliers, the number of chiral centers analysed, the number of these observed in the model and the number defined in the Chemical Component Dictionary. Similar counts are reported in the Torsion and Rings columns. '-' means no outliers of that kind were identified.

Mol	Type	Chain	Res	Link	Chirals	Torsions	Rings
4	PHB	B	999	3	-	0/4/4/4	0/1/1/1

All (1) bond length outliers are listed below:

Mol	Chain	Res	Type	Atoms	Z	Observed(Å)	Ideal(Å)
4	B	999	PHB	C1-C1'	2.25	1.54	1.49

There are no bond angle outliers.

There are no chirality outliers.

There are no torsion outliers.

There are no ring outliers.

No monomer is involved in short contacts.

## 4.7 Other polymers [i](#)

There are no such residues in this entry.

## 4.8 Polymer linkage issues [i](#)

There are no chain breaks in this entry.

## 5 Fit of model and data [i](#)

### 5.1 Protein, DNA and RNA chains [i](#)

In the following table, the column labelled ‘#RSRZ > 2’ contains the number (and percentage) of RSRZ outliers, followed by percent RSRZ outliers for the chain as percentile scores relative to all X-ray entries and entries of similar resolution. The OWAB column contains the minimum, median, 95<sup>th</sup> percentile and maximum values of the occupancy-weighted average B-factor per residue. The column labelled ‘Q < 0.9’ lists the number of (and percentage) of residues with an average occupancy less than 0.9.

Mol	Chain	Analysed	<RSRZ>	#RSRZ>2	OWAB(Å <sup>2</sup> )	Q<0.9
1	A	202/209 (96%)	0.18	9 (4%) 33 27	16, 25, 42, 64	0
2	B	238/241 (98%)	-0.23	4 (1%) 70 66	15, 20, 37, 47	0
All	All	440/450 (97%)	-0.04	13 (2%) 50 44	15, 21, 40, 64	0

All (13) RSRZ outliers are listed below:

Mol	Chain	Res	Type	RSRZ
1	A	178	ASP	6.2
1	A	42	ASP	5.6
1	A	177	ARG	5.3
2	B	303	ILE	4.9
1	A	179	GLY	3.7
2	B	370	ASP	3.2
1	A	192	GLU	3.1
1	A	27	ASN	2.8
1	A	180	GLU	2.8
1	A	43	ASN	2.5
2	B	499	GLN	2.5
1	A	26	ALA	2.4
2	B	414	GLN	2.2

### 5.2 Non-standard residues in protein, DNA, RNA chains [i](#)

There are no non-standard protein/DNA/RNA residues in this entry.

### 5.3 Carbohydrates [i](#)

There are no monosaccharides in this entry.



## 5.4 Ligands [i](#)

In the following table, the Atoms column lists the number of modelled atoms in the group and the number defined in the chemical component dictionary. The B-factors column lists the minimum, median, 95<sup>th</sup> percentile and maximum values of B factors of atoms in the group. The column labelled 'Q< 0.9' lists the number of atoms with occupancy less than 0.9.

Mol	Type	Chain	Res	Atoms	RSCC	RSR	B-factors(Å <sup>2</sup> )	Q<0.9
4	PHB	B	999	10/10	0.93	0.11	26,27,28,30	0
3	FE	B	600	1/1	1.00	0.04	21,21,21,21	0

## 5.5 Other polymers [i](#)

There are no such residues in this entry.