



Full wwPDB X-ray Structure Validation Report ⓘ

Oct 19, 2024 – 12:15 PM EDT

PDB ID : 5BVH
Title : CO-bound form of Selenium incorporated nitrogenase MoFe-protein (Av1-Se-CO) from *A. vinelandii*
Authors : Spatzal, T.; Perez, K.A.; Howard, J.B.; Rees, D.C.
Deposited on : 2015-06-05
Resolution : 1.53 Å (reported)

This is a Full wwPDB X-ray Structure Validation Report for a publicly released PDB entry.

We welcome your comments at validation@mail.wwpdb.org

A user guide is available at

<https://www.wwpdb.org/validation/2017/XrayValidationReportHelp>

with specific help available everywhere you see the ⓘ symbol.

The types of validation reports are described at

<http://www.wwpdb.org/validation/2017/FAQs#types>.

The following versions of software and data (see [references ⓘ](#)) were used in the production of this report:

MolProbity : 4.02b-467
Mogul : 2022.3.0, CSD as543be (2022)
Xtrriage (Phenix) : 1.20.1
EDS : 3.0
buster-report : 1.1.7 (2018)
Percentile statistics : 20231227.v01 (using entries in the PDB archive December 27th 2023)
CCP4 : 9.0.003 (Gargrove)
Density-Fitness : 1.0.11
Ideal geometry (proteins) : Engh & Huber (2001)
Ideal geometry (DNA, RNA) : Parkinson et al. (1996)
Validation Pipeline (wwPDB-VP) : 2.39

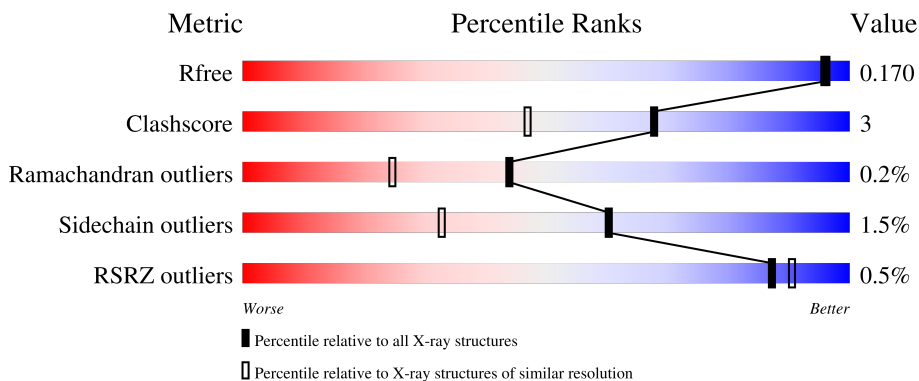
1 Overall quality at a glance

The following experimental techniques were used to determine the structure:

X-RAY DIFFRACTION

The reported resolution of this entry is 1.53 Å.

Percentile scores (ranging between 0-100) for global validation metrics of the entry are shown in the following graphic. The table shows the number of entries on which the scores are based.



Metric	Whole archive (#Entries)	Similar resolution (#Entries, resolution range(Å))
R_{free}	164625	3511 (1.56-1.52)
Clashscore	180529	3784 (1.56-1.52)
Ramachandran outliers	177936	3720 (1.56-1.52)
Sidechain outliers	177891	3717 (1.56-1.52)
RSRZ outliers	164620	3510 (1.56-1.52)

The table below summarises the geometric issues observed across the polymeric chains and their fit to the electron density. The red, orange, yellow and green segments of the lower bar indicate the fraction of residues that contain outliers for ≥ 3 , 2, 1 and 0 types of geometric quality criteria respectively. A grey segment represents the fraction of residues that are not modelled. The numeric value for each fraction is indicated below the corresponding segment, with a dot representing fractions $\leq 5\%$. The upper red bar (where present) indicates the fraction of residues that have poor fit to the electron density. The numeric value is given above the bar.

Mol	Chain	Length	Quality of chain
1	A	492	
1	C	492	
2	B	523	
2	D	523	

2 Entry composition

There are 11 unique types of molecules in this entry. The entry contains 18236 atoms, of which 0 are hydrogens and 0 are deuteriums.

In the tables below, the ZeroOcc column contains the number of atoms modelled with zero occupancy, the AltConf column contains the number of residues with at least one atom in alternate conformation and the Trace column contains the number of residues modelled with at most 2 atoms.

- Molecule 1 is a protein called Nitrogenase molybdenum-iron protein alpha chain.

Mol	Chain	Residues	Atoms					ZeroOcc	AltConf	Trace
			Total	C	N	O	S			
1	A	477	Total	C	N	O	S	0	10	0
			3859	2452	662	717	28			
1	C	477	Total	C	N	O	S	0	11	0
			3868	2455	663	722	28			

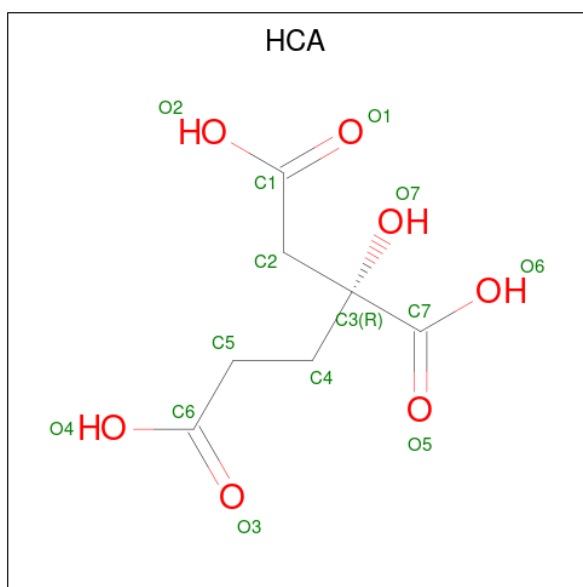
There are 2 discrepancies between the modelled and reference sequences:

Chain	Residue	Modelled	Actual	Comment	Reference
A	440	GLN	GLU	conflict	UNP P07328
C	440	GLN	GLU	conflict	UNP P07328

- Molecule 2 is a protein called Nitrogenase molybdenum-iron protein beta chain.

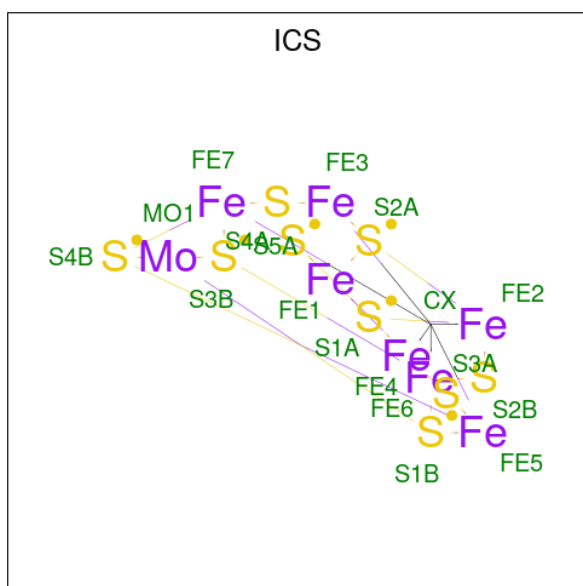
Mol	Chain	Residues	Atoms					ZeroOcc	AltConf	Trace
			Total	C	N	O	S			
2	B	522	Total	C	N	O	S	0	11	0
			4243	2704	718	791	30			
2	D	522	Total	C	N	O	S	0	13	0
			4277	2727	722	795	33			

- Molecule 3 is 3-HYDROXY-3-CARBOXY-ADIPIC ACID (three-letter code: HCA) (formula: C₇H₁₀O₇).



Mol	Chain	Residues	Atoms	ZeroOcc	AltConf
3	A	1	Total C O 14 7 7	0	0
3	C	1	Total C O 14 7 7	0	0

- Molecule 4 is iron-sulfur-molybdenum cluster with interstitial carbon (three-letter code: ICS) (formula: CFe_7MoS_9).



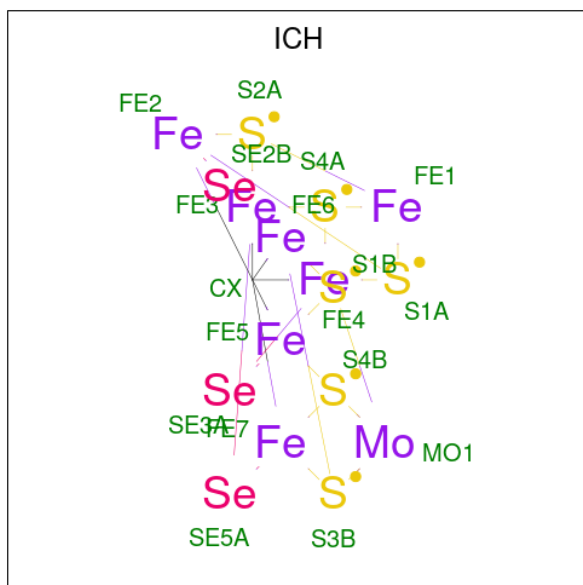
Mol	Chain	Residues	Atoms	ZeroOcc	AltConf
4	A	1	Total C Fe Mo S 17 1 7 1 8	0	1

Continued on next page...

Continued from previous page...

Mol	Chain	Residues	Atoms					ZeroOcc	AltConf
			Total	C	Fe	Mo	S		
4	C	1	17	1	7	1	8	0	1

- Molecule 5 is iron-sulfur-molybdenum cluster with interstitial carbon with selenium incorporated (three-letter code: ICH) (formula: $\text{CFe}_7\text{MoS}_6\text{Se}_3$).



Mol	Chain	Residues	Atoms					ZeroOcc	AltConf	
			Total	C	Fe	Mo	S			Se
5	A	1	18	1	7	1	6	3	0	1
5	C	1	18	1	7	1	6	3	0	1

- Molecule 6 is IMIDAZOLE (three-letter code: IMD) (formula: $\text{C}_3\text{H}_5\text{N}_2$).

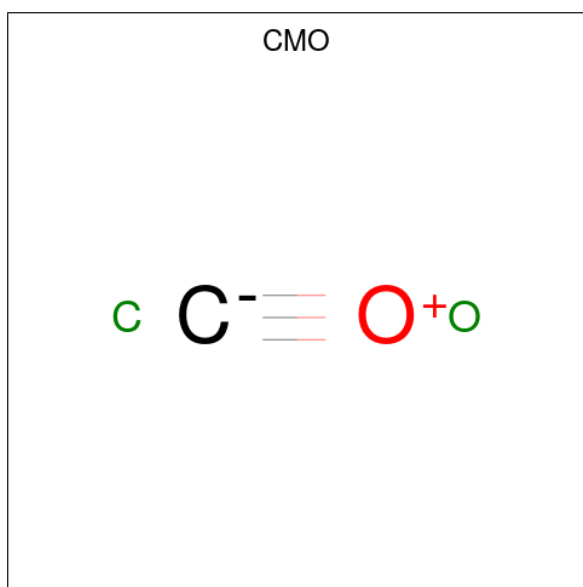


Mol	Chain	Residues	Atoms	ZeroOcc	AltConf
6	A	1	Total C N 5 3 2	0	0
6	B	1	Total C N 5 3 2	0	0
6	B	1	Total C N 5 3 2	0	0
6	B	1	Total C N 5 3 2	0	0
6	C	1	Total C N 5 3 2	0	0
6	D	1	Total C N 5 3 2	0	0
6	D	1	Total C N 5 3 2	0	0
6	D	1	Total C N 5 3 2	0	0

- Molecule 7 is CHLORIDE ION (three-letter code: CL) (formula: Cl).

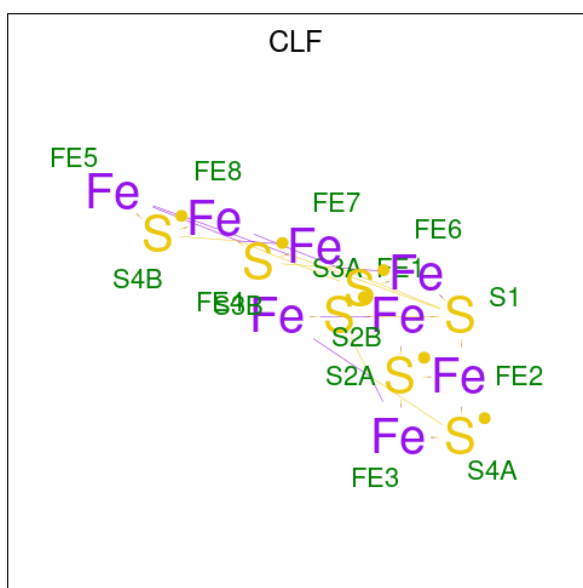
Mol	Chain	Residues	Atoms	ZeroOcc	AltConf
7	A	1	Total Cl 1 1	0	0
7	C	1	Total Cl 1 1	0	0

- Molecule 8 is CARBON MONOXIDE (three-letter code: CMO) (formula: CO).



Mol	Chain	Residues	Atoms			ZeroOcc	AltConf
8	A	1	Total	C	O	0	1
			2	1	1		
8	C	1	Total	C	O	0	1
			2	1	1		

- Molecule 9 is FE(8)-S(7) CLUSTER (three-letter code: CLF) (formula: Fe₈S₇).



Mol	Chain	Residues	Atoms			ZeroOcc	AltConf
9	A	1	Total	Fe	S	0	0
			15	8	7		
9	C	1	Total	Fe	S	0	0
			15	8	7		

- Molecule 10 is FE (II) ION (three-letter code: FE2) (formula: Fe).

Mol	Chain	Residues	Atoms		ZeroOcc	AltConf
10	B	2	Total 2	O 2	0	0

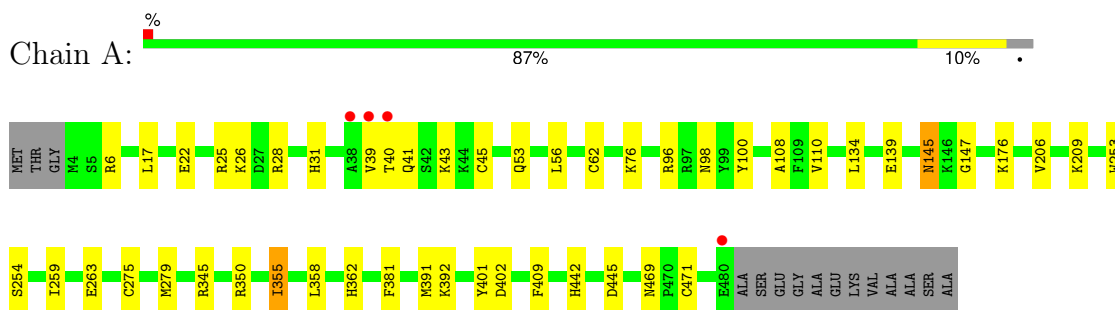
- Molecule 11 is water.

Mol	Chain	Residues	Atoms		ZeroOcc	AltConf
11	A	383	Total 383	O 383	0	0
11	B	509	Total 509	O 509	0	0
11	C	389	Total 389	O 389	0	0
11	D	532	Total 532	O 532	0	0

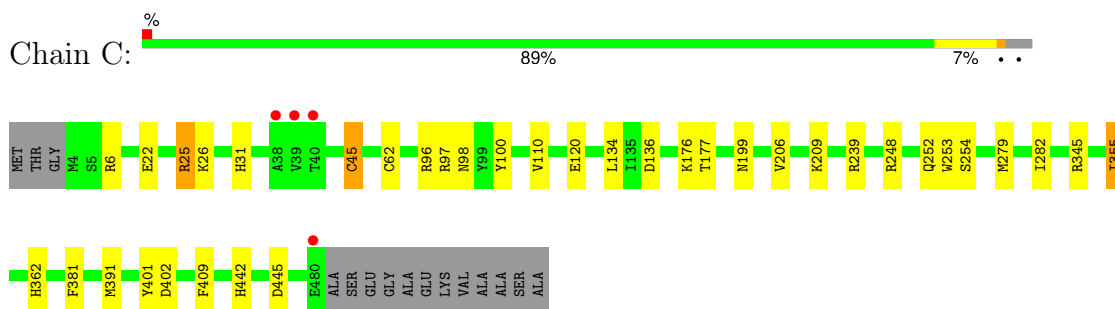
3 Residue-property plots [i](#)

These plots are drawn for all protein, RNA, DNA and oligosaccharide chains in the entry. The first graphic for a chain summarises the proportions of the various outlier classes displayed in the second graphic. The second graphic shows the sequence view annotated by issues in geometry and electron density. Residues are color-coded according to the number of geometric quality criteria for which they contain at least one outlier: green = 0, yellow = 1, orange = 2 and red = 3 or more. A red dot above a residue indicates a poor fit to the electron density ($RSRZ > 2$). Stretches of 2 or more consecutive residues without any outlier are shown as a green connector. Residues present in the sample, but not in the model, are shown in grey.

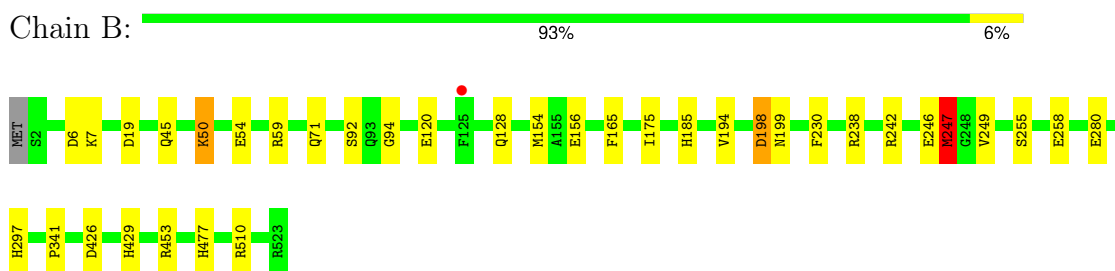
- Molecule 1: Nitrogenase molybdenum-iron protein alpha chain



- Molecule 1: Nitrogenase molybdenum-iron protein alpha chain

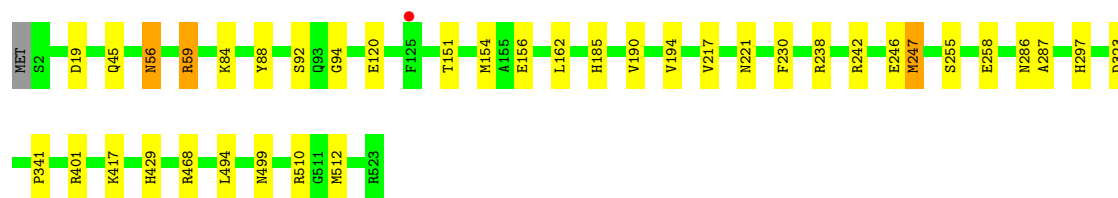


- Molecule 2: Nitrogenase molybdenum-iron protein beta chain



- Molecule 2: Nitrogenase molybdenum-iron protein beta chain





4 Data and refinement statistics i

Property	Value	Source
Space group	P 1 21 1	Depositor
Cell constants a, b, c, α , β , γ	81.07Å 130.83Å 107.32Å 90.00° 110.64° 90.00°	Depositor
Resolution (Å)	100.43 – 1.53 100.43 – 1.53	Depositor EDS
% Data completeness (in resolution range)	96.1 (100.43-1.53) 96.1 (100.43-1.53)	Depositor EDS
R_{merge}	(Not available)	Depositor
R_{sym}	0.13	Depositor
$\langle I/\sigma(I) \rangle$ ¹	2.02 (at 1.53Å)	Xtrriage
Refinement program	REFMAC 5.8.0123	Depositor
R, R_{free}	0.144 , 0.160 0.157 , 0.170	Depositor DCC
R_{free} test set	14889 reflections (4.93%)	wwPDB-VP
Wilson B-factor (Å ²)	11.0	Xtrriage
Anisotropy	0.307	Xtrriage
Bulk solvent k_{sol} (e/Å ³), B_{sol} (Å ²)	0.32 , 31.8	EDS
L-test for twinning ²	$\langle L \rangle = 0.49$, $\langle L^2 \rangle = 0.32$	Xtrriage
Estimated twinning fraction	0.018 for h,-k,-h-l	Xtrriage
F_o, F_c correlation	0.97	EDS
Total number of atoms	18236	wwPDB-VP
Average B, all atoms (Å ²)	13.0	wwPDB-VP

Xtrriage's analysis on translational NCS is as follows: *The largest off-origin peak in the Patterson function is 3.69% of the height of the origin peak. No significant pseudotranslation is detected.*

¹Intensities estimated from amplitudes.

²Theoretical values of $\langle |L| \rangle$, $\langle L^2 \rangle$ for acentric reflections are 0.5, 0.333 respectively for untwinned datasets, and 0.375, 0.2 for perfectly twinned datasets.

5 Model quality [i](#)

5.1 Standard geometry [i](#)

Bond lengths and bond angles in the following residue types are not validated in this section: HCA, CLF, ICH, IMD, CMO, CL, FE2, ICS

The Z score for a bond length (or angle) is the number of standard deviations the observed value is removed from the expected value. A bond length (or angle) with $|Z| > 5$ is considered an outlier worth inspection. RMSZ is the root-mean-square of all Z scores of the bond lengths (or angles).

Mol	Chain	Bond lengths		Bond angles	
		RMSZ	# Z >5	RMSZ	# Z >5
1	A	0.72	0/3946	0.93	10/5315 (0.2%)
1	C	0.72	0/3956	0.89	9/5332 (0.2%)
2	B	0.74	0/4350	0.86	7/5878 (0.1%)
2	D	0.72	0/4381	0.86	9/5916 (0.2%)
All	All	0.73	0/16633	0.89	35/22441 (0.2%)

Chiral center outliers are detected by calculating the chiral volume of a chiral center and verifying if the center is modelled as a planar moiety or with the opposite hand. A planarity outlier is detected by checking planarity of atoms in a peptide group, atoms in a mainchain group or atoms of a sidechain that are expected to be planar.

Mol	Chain	#Chirality outliers	#Planarity outliers
1	A	0	1
1	C	0	1
All	All	0	2

There are no bond length outliers.

All (35) bond angle outliers are listed below:

Mol	Chain	Res	Type	Atoms	Z	Observed(°)	Ideal(°)
1	A	279[A]	MET	CG-SD-CE	-14.36	77.23	100.20
1	A	279[B]	MET	CG-SD-CE	-14.36	77.23	100.20
2	B	19	ASP	CB-CG-OD2	-7.47	111.58	118.30
1	A	6	ARG	NE-CZ-NH2	-7.19	116.70	120.30
2	B	238	ARG	NE-CZ-NH2	-6.75	116.93	120.30
1	C	25	ARG	NE-CZ-NH1	6.69	123.65	120.30
2	D	59	ARG	NE-CZ-NH1	6.51	123.56	120.30
1	C	345[A]	ARG	NE-CZ-NH2	-6.46	117.07	120.30
1	C	345[B]	ARG	NE-CZ-NH2	-6.46	117.07	120.30
1	C	248	ARG	NE-CZ-NH2	-6.37	117.11	120.30

Continued on next page...

Continued from previous page...

Mol	Chain	Res	Type	Atoms	Z	Observed(°)	Ideal(°)
1	A	6	ARG	NE-CZ-NH1	6.32	123.46	120.30
1	C	248	ARG	NE-CZ-NH1	6.22	123.41	120.30
2	B	19	ASP	CB-CG-OD1	6.17	123.85	118.30
2	B	247	MET	CG-SD-CE	-6.11	90.42	100.20
1	A	345[A]	ARG	NE-CZ-NH2	-5.99	117.30	120.30
1	A	345[B]	ARG	NE-CZ-NH2	-5.99	117.30	120.30
2	D	238	ARG	NE-CZ-NH2	-5.88	117.36	120.30
1	A	28	ARG	NE-CZ-NH1	5.80	123.20	120.30
2	B	510	ARG	NE-CZ-NH2	-5.78	117.41	120.30
1	A	350	ARG	NE-CZ-NH1	5.76	123.18	120.30
2	D	401	ARG	NE-CZ-NH2	-5.68	117.46	120.30
1	C	136	ASP	CB-CG-OD1	5.32	123.09	118.30
2	D	510	ARG	NE-CZ-NH1	5.30	122.95	120.30
1	C	6	ARG	NE-CZ-NH2	-5.29	117.65	120.30
2	D	323	ASP	CB-CG-OD1	5.28	123.06	118.30
1	A	409	PHE	CB-CG-CD2	-5.24	117.13	120.80
2	B	59	ARG	NE-CZ-NH1	5.23	122.91	120.30
2	B	198	ASP	CB-CG-OD2	-5.22	113.61	118.30
2	D	247[A]	MET	CG-SD-CE	-5.20	91.88	100.20
2	D	247[B]	MET	CG-SD-CE	-5.20	91.88	100.20
2	D	19	ASP	CB-CG-OD2	-5.18	113.64	118.30
1	C	409	PHE	CB-CG-CD1	5.17	124.42	120.80
1	A	409	PHE	CB-CG-CD1	5.07	124.35	120.80
1	C	97	ARG	NE-CZ-NH1	5.06	122.83	120.30
2	D	468	ARG	NE-CZ-NH1	5.05	122.82	120.30

There are no chirality outliers.

All (2) planarity outliers are listed below:

Mol	Chain	Res	Type	Group
1	A	96	ARG	Sidechain
1	C	96	ARG	Sidechain

5.2 Too-close contacts [\(i\)](#)

In the following table, the Non-H and H(model) columns list the number of non-hydrogen atoms and hydrogen atoms in the chain respectively. The H(added) column lists the number of hydrogen atoms added and optimized by MolProbity. The Clashes column lists the number of clashes within the asymmetric unit, whereas Symm-Clashes lists symmetry-related clashes.

Mol	Chain	Non-H	H(model)	H(added)	Clashes	Symm-Clashes
1	A	3859	0	3800	28	0
1	C	3868	0	3785	26	0
2	B	4243	0	4125	34	0
2	D	4277	0	4164	34	0
3	A	14	0	6	2	0
3	C	14	0	6	1	0
4	A	17	0	0	0	0
4	C	17	0	0	0	0
5	A	18	0	0	2	0
5	C	18	0	0	1	0
6	A	5	0	5	0	0
6	B	15	0	15	2	0
6	C	5	0	5	1	0
6	D	15	0	15	2	0
7	A	1	0	0	0	0
7	C	1	0	0	0	0
8	A	2	0	0	0	0
8	C	2	0	0	0	0
9	A	15	0	0	0	0
9	C	15	0	0	0	0
10	B	2	0	0	0	0
11	A	383	0	0	1	0
11	B	509	0	0	5	0
11	C	389	0	0	3	0
11	D	532	0	0	5	0
All	All	18236	0	15926	112	0

The all-atom clashscore is defined as the number of clashes found per 1000 atoms (including hydrogen atoms). The all-atom clashscore for this structure is 3.

All (112) close contacts within the same asymmetric unit are listed below, sorted by their clash magnitude.

Atom-1	Atom-2	Interatomic distance (Å)	Clash overlap (Å)
1:A:45[B]:CYS:SG	1:A:391:MET:HE1	1.74	1.27
1:A:45[B]:CYS:SG	1:A:391:MET:CE	2.42	1.07
2:B:453[B]:ARG:HD3	2:D:512[B]:MET:HG2	1.09	1.05
2:B:453[B]:ARG:CD	2:D:512[B]:MET:HG2	1.87	1.05
2:B:453[B]:ARG:CD	2:D:512[B]:MET:CG	2.35	1.04
2:B:453[B]:ARG:HD3	2:D:512[B]:MET:CG	1.87	1.03
2:B:453[B]:ARG:HD2	2:D:512[B]:MET:SD	2.01	0.99
1:C:45[A]:CYS:SG	1:C:391:MET:CE	2.50	0.99
1:C:45[A]:CYS:SG	1:C:391:MET:HE2	2.05	0.96

Continued on next page...

Continued from previous page...

Atom-1	Atom-2	Interatomic distance (Å)	Clash overlap (Å)
2:B:453[B]:ARG:HD2	2:D:512[B]:MET:CG	2.01	0.91
2:B:477:HIS:H	2:D:499:ASN:HD21	1.16	0.90
1:C:45[A]:CYS:SG	1:C:391:MET:HE1	2.17	0.84
2:B:426:ASP:H	2:B:429:HIS:HD2	1.26	0.83
2:B:453[B]:ARG:CD	2:D:512[B]:MET:SD	2.67	0.82
1:C:206:VAL:HA	1:C:209[B]:LYS:HE2	1.66	0.76
1:A:22:GLU:OE2	1:A:26:LYS:HE3	1.86	0.76
2:B:92:SER:OG	2:B:154[B]:MET:HG2	1.85	0.75
2:B:453[B]:ARG:NH2	11:B:701:HOH:O	2.19	0.74
2:B:50:LYS:NZ	11:B:702:HOH:O	2.20	0.71
6:D:601:IMD:H4	11:D:756:HOH:O	1.89	0.70
1:A:209[B]:LYS:HE3	1:A:263:GLU:OE2	1.93	0.69
2:B:230:PHE:H	2:B:297:HIS:HE1	1.42	0.65
1:C:31:HIS:HD2	1:C:402:ASP:OD2	1.79	0.65
2:B:71:GLN:HE22	2:B:199:ASN:HD22	1.43	0.64
1:A:31:HIS:HD2	1:A:402:ASP:OD2	1.80	0.63
2:B:230:PHE:H	2:B:297:HIS:CE1	2.17	0.63
1:C:239:ARG:HH11	1:C:252:GLN:HE21	1.45	0.62
1:C:31:HIS:HE1	11:C:603:HOH:O	1.82	0.62
2:D:230:PHE:H	2:D:297:HIS:HE1	1.48	0.61
1:A:469:ASN:HD22	1:A:471:CYS:H	1.48	0.61
2:B:280:GLU:OE1	6:B:601:IMD:H5	2.00	0.61
1:A:45[B]:CYS:SG	1:A:391:MET:HE3	2.36	0.61
2:D:120:GLU:OE2	6:D:603:IMD:H4	2.01	0.61
2:D:230:PHE:H	2:D:297:HIS:CE1	2.19	0.60
1:C:177:THR:HG21	1:C:209[B]:LYS:NZ	2.17	0.59
1:A:41:GLN:HE21	1:A:43:LYS:H	1.50	0.59
2:B:297:HIS:HD2	11:B:731:HOH:O	1.83	0.59
2:D:297:HIS:HD2	11:D:735:HOH:O	1.86	0.58
2:D:56:ASN:HD21	2:D:59:ARG:HH21	1.50	0.58
1:A:31:HIS:HE1	11:A:603:HOH:O	1.86	0.57
1:A:206:VAL:HA	1:A:209[A]:LYS:HE2	1.86	0.57
2:D:45[A]:GLN:HG2	11:D:901:HOH:O	2.05	0.57
2:B:120:GLU:OE2	6:B:603:IMD:H2	2.05	0.56
2:D:92:SER:OG	2:D:154[B]:MET:HG2	2.05	0.56
1:C:199:ASN:HD21	1:C:279[A]:MET:HA	1.72	0.55
2:D:185:HIS:HE1	11:D:842:HOH:O	1.89	0.55
1:C:25:ARG:HD3	11:C:663:HOH:O	2.08	0.54
1:A:209[B]:LYS:CE	1:A:263:GLU:OE2	2.56	0.53
2:D:242:ARG:HD3	2:D:246[B]:GLU:OE2	2.09	0.53
2:B:50:LYS:CE	2:B:54:GLU:HG3	2.39	0.52

Continued on next page...

Continued from previous page...

Atom-1	Atom-2	Interatomic distance (Å)	Clash overlap (Å)
1:A:209[B]:LYS:NZ	1:A:263:GLU:OE2	2.41	0.52
1:C:177:THR:CG2	1:C:209[B]:LYS:NZ	2.72	0.52
2:B:45[A]:GLN:HG2	11:B:802:HOH:O	2.09	0.52
2:B:185:HIS:HE1	11:B:867:HOH:O	1.91	0.52
1:C:120[B]:GLU:HG3	2:D:190:VAL:HG22	1.91	0.52
1:C:199:ASN:HD22	1:C:282:ILE:H	1.56	0.52
1:C:177:THR:CG2	1:C:209[B]:LYS:HZ3	2.23	0.52
2:B:242:ARG:HD3	2:B:246[A]:GLU:OE2	2.10	0.51
2:B:426:ASP:H	2:B:429:HIS:CD2	2.17	0.51
2:B:194:VAL:HB	2:B:297:HIS:CG	2.47	0.48
1:A:381:PHE:CZ	5:A:503[B]:ICH:SE2B	3.16	0.48
2:B:156:GLU:OE2	2:B:185:HIS:HD2	1.97	0.48
1:C:177:THR:OG1	1:C:209[B]:LYS:NZ	2.45	0.48
1:A:145:ASN:HD22	1:A:147:GLY:H	1.60	0.48
1:C:134:LEU:C	1:C:134:LEU:HD23	2.34	0.48
2:D:56:ASN:HD22	2:D:59:ARG:HE	1.62	0.47
1:A:139:GLU:OE2	1:A:176:LYS:HE3	2.14	0.47
2:B:247:MET:HG3	2:B:341:PRO:HD3	1.96	0.47
1:A:17[A]:LEU:HB3	1:A:25:ARG:HG3	1.96	0.47
2:D:194:VAL:HB	2:D:297:HIS:CG	2.49	0.47
1:A:62:CYS:HB3	2:B:94:GLY:HA3	1.97	0.46
1:A:442:HIS:HB3	3:A:501:HCA:O6	2.16	0.46
1:A:39:VAL:HG11	1:A:45[A]:CYS:SG	2.56	0.46
1:C:177:THR:HG21	1:C:209[B]:LYS:HZ3	1.81	0.46
2:D:156:GLU:OE2	2:D:185:HIS:HD2	1.99	0.46
1:A:209[A]:LYS:NZ	1:A:259:ILE:HD11	2.30	0.45
2:B:247:MET:HB3	2:B:249:VAL:HG23	1.97	0.45
1:C:199:ASN:HD21	1:C:279[B]:MET:HA	1.81	0.45
1:A:134:LEU:C	1:A:134:LEU:HD23	2.37	0.45
1:C:62:CYS:HB3	2:D:94:GLY:HA3	1.99	0.45
2:D:56:ASN:ND2	2:D:59:ARG:HH21	2.14	0.45
1:C:442:HIS:HB3	3:C:501:HCA:O5	2.17	0.44
1:A:100:TYR:CE1	1:A:110:VAL:HB	2.52	0.44
2:B:128:GLN:HE22	2:B:165:PHE:HA	1.83	0.44
2:D:84:LYS:HE3	11:D:723:HOH:O	2.17	0.44
1:C:100:TYR:CE1	1:C:110:VAL:HB	2.53	0.44
2:D:247[B]:MET:HG3	2:D:341:PRO:HD3	1.99	0.43
1:C:22:GLU:HG3	1:C:26:LYS:HE3	2.00	0.43
1:C:45[B]:CYS:HB2	1:C:391:MET:HE1	2.01	0.42
1:A:275:CYS:HA	1:A:358:LEU:HD22	2.01	0.42
1:A:442:HIS:CG	3:A:501:HCA:H52	2.55	0.42

Continued on next page...

Continued from previous page...

Atom-1	Atom-2	Interatomic distance (Å)	Clash overlap (Å)
1:C:199:ASN:HD22	1:C:282:ILE:N	2.17	0.42
1:C:253:TRP:HA	1:C:254:SER:HA	1.82	0.42
2:D:217:VAL:H	2:D:286:ASN:ND2	2.18	0.42
2:B:71:GLN:NE2	2:B:199:ASN:HD22	2.15	0.42
2:D:151:THR:HG23	2:D:162:LEU:HD11	2.02	0.42
2:D:221:ASN:OD1	2:D:287:ALA:HA	2.20	0.42
1:A:253:TRP:HA	1:A:254:SER:HA	1.85	0.42
1:A:381:PHE:HZ	5:A:503[B]:ICH:SE2B	2.51	0.42
2:B:92:SER:HG	2:B:154[B]:MET:HG2	1.83	0.41
1:C:381:PHE:CZ	5:C:503[B]:ICH:SE2B	3.23	0.41
1:A:53:GLN:HB2	1:A:56:LEU:HD12	2.02	0.41
2:B:50:LYS:HE2	2:B:54:GLU:HG3	2.03	0.41
2:B:198:ASP:HB2	2:B:297:HIS:O	2.21	0.41
6:C:504:IMD:H2	11:C:884:HOH:O	2.20	0.41
2:B:453[B]:ARG:HD2	2:D:512[B]:MET:HG3	1.95	0.40
2:D:494:LEU:HD23	2:D:494:LEU:C	2.42	0.40
1:A:76:LYS:O	1:A:108:ALA:HA	2.21	0.40

There are no symmetry-related clashes.

5.3 Torsion angles [i](#)

5.3.1 Protein backbone [i](#)

In the following table, the Percentiles column shows the percent Ramachandran outliers of the chain as a percentile score with respect to all X-ray entries followed by that with respect to entries of similar resolution.

The Analysed column shows the number of residues for which the backbone conformation was analysed, and the total number of residues.

Mol	Chain	Analysed	Favoured	Allowed	Outliers	Percentiles	
1	A	484/492 (98%)	463 (96%)	20 (4%)	1 (0%)	44	25
1	C	486/492 (99%)	468 (96%)	17 (4%)	1 (0%)	44	25
2	B	531/523 (102%)	523 (98%)	7 (1%)	1 (0%)	44	25
2	D	533/523 (102%)	523 (98%)	9 (2%)	1 (0%)	44	25
All	All	2034/2030 (100%)	1977 (97%)	53 (3%)	4 (0%)	44	25

All (4) Ramachandran outliers are listed below:

Mol	Chain	Res	Type
2	B	255	SER
2	D	255	SER
1	A	355	ILE
1	C	355	ILE

5.3.2 Protein sidechains [i](#)

In the following table, the Percentiles column shows the percent sidechain outliers of the chain as a percentile score with respect to all X-ray entries followed by that with respect to entries of similar resolution.

The Analysed column shows the number of residues for which the sidechain conformation was analysed, and the total number of residues.

Mol	Chain	Analysed	Rotameric	Outliers	Percentiles	
1	A	415/415 (100%)	407 (98%)	8 (2%)	52	23
1	C	414/415 (100%)	406 (98%)	8 (2%)	52	23
2	B	460/455 (101%)	453 (98%)	7 (2%)	60	33
2	D	463/455 (102%)	459 (99%)	4 (1%)	75	56
All	All	1752/1740 (101%)	1725 (98%)	27 (2%)	60	33

All (27) residues with a non-rotameric sidechain are listed below:

Mol	Chain	Res	Type
1	A	40	THR
1	A	98	ASN
1	A	145	ASN
1	A	355	ILE
1	A	362	HIS
1	A	392	LYS
1	A	401	TYR
1	A	445	ASP
2	B	6[A]	ASP
2	B	6[B]	ASP
2	B	7	LYS
2	B	50	LYS
2	B	175	ILE
2	B	247	MET
2	B	258	GLU
1	C	45[A]	CYS
1	C	45[B]	CYS
1	C	98	ASN

Continued on next page...

Continued from previous page...

Mol	Chain	Res	Type
1	C	176	LYS
1	C	355	ILE
1	C	362	HIS
1	C	401	TYR
1	C	445	ASP
2	D	56	ASN
2	D	88	TYR
2	D	258	GLU
2	D	417	LYS

Sometimes sidechains can be flipped to improve hydrogen bonding and reduce clashes. All (36) such sidechains are listed below:

Mol	Chain	Res	Type
1	A	31	HIS
1	A	41	GLN
1	A	145	ASN
1	A	384	ASN
1	A	468	ASN
1	A	469	ASN
2	B	71	GLN
2	B	128	GLN
2	B	130	ASN
2	B	168	ASN
2	B	185	HIS
2	B	225	ASN
2	B	294	GLN
2	B	297	HIS
2	B	363	HIS
2	B	418	ASN
2	B	429	HIS
1	C	31	HIS
1	C	119	GLN
1	C	199	ASN
1	C	252	GLN
1	C	271	ASN
1	C	384	ASN
1	C	468	ASN
2	D	56	ASN
2	D	130	ASN
2	D	185	HIS
2	D	225	ASN
2	D	286	ASN

Continued on next page...

Continued from previous page...

Mol	Chain	Res	Type
2	D	294	GLN
2	D	297	HIS
2	D	363	HIS
2	D	418	ASN
2	D	429	HIS
2	D	499	ASN
2	D	518	ASN

5.3.3 RNA [i](#)

There are no RNA molecules in this entry.

5.4 Non-standard residues in protein, DNA, RNA chains [i](#)

There are no non-standard protein/DNA/RNA residues in this entry.

5.5 Carbohydrates [i](#)

There are no oligosaccharides in this entry.

5.6 Ligand geometry [i](#)

Of 22 ligands modelled in this entry, 4 are monoatomic - leaving 18 for Mogul analysis.

In the following table, the Counts columns list the number of bonds (or angles) for which Mogul statistics could be retrieved, the number of bonds (or angles) that are observed in the model and the number of bonds (or angles) that are defined in the Chemical Component Dictionary. The Link column lists molecule types, if any, to which the group is linked. The Z score for a bond length (or angle) is the number of standard deviations the observed value is removed from the expected value. A bond length (or angle) with $|Z| > 2$ is considered an outlier worth inspection. RMSZ is the root-mean-square of all Z scores of the bond lengths (or angles).

Mol	Type	Chain	Res	Link	Bond lengths			Bond angles		
					Counts	RMSZ	# Z > 2	Counts	RMSZ	# Z > 2
5	ICH	A	503[B]	1	0,30,30	-	-	-		
9	CLF	C	507	2,1	0,24,24	-	-	-		
4	ICS	C	502[A]	1	4,28,30	1.84	1 (25%)	-		
9	CLF	A	507	2,1	0,24,24	-	-	-		
5	ICH	C	503[B]	1	0,30,30	-	-	-		
6	IMD	A	504	-	3,5,5	0.22	0	4,5,5	0.62	0
6	IMD	C	504	-	3,5,5	0.40	0	4,5,5	0.64	0

Mol	Type	Chain	Res	Link	Bond lengths			Bond angles		
					Counts	RMSZ	# Z > 2	Counts	RMSZ	# Z > 2
6	IMD	D	601	-	3,5,5	0.48	0	4,5,5	0.58	0
3	HCA	A	501	-	13,13,13	1.05	0	15,18,18	1.61	5 (33%)
3	HCA	C	501	-	13,13,13	1.08	0	15,18,18	1.32	2 (13%)
6	IMD	B	602	-	3,5,5	0.18	0	4,5,5	0.88	0
4	ICS	A	502[A]	1	4,28,30	1.66	1 (25%)	-		
6	IMD	B	603	-	3,5,5	0.39	0	4,5,5	0.52	0
6	IMD	D	602	-	3,5,5	0.38	0	4,5,5	0.65	0
8	CMO	A	506[C]	-	0,1,1	-	-	-		
6	IMD	B	601	-	3,5,5	0.54	0	4,5,5	0.60	0
6	IMD	D	603	-	3,5,5	0.38	0	4,5,5	0.48	0
8	CMO	C	506[C]	-	0,1,1	-	-	-		

In the following table, the Chirals column lists the number of chiral outliers, the number of chiral centers analysed, the number of these observed in the model and the number defined in the Chemical Component Dictionary. Similar counts are reported in the Torsion and Rings columns. '2' means no outliers of that kind were identified.

Mol	Type	Chain	Res	Link	Chirals	Torsions	Rings
9	CLF	C	507	2,1	-	-	0/12/10/10
9	CLF	A	507	2,1	-	-	0/12/10/10
6	IMD	A	504	-	-	-	0/1/1/1
6	IMD	C	504	-	-	-	0/1/1/1
6	IMD	D	601	-	-	-	0/1/1/1
3	HCA	A	501	-	-	3/17/17/17	-
6	IMD	B	602	-	-	-	0/1/1/1
3	HCA	C	501	-	-	0/17/17/17	-
6	IMD	B	603	-	-	-	0/1/1/1
6	IMD	D	602	-	-	-	0/1/1/1
6	IMD	B	601	-	-	-	0/1/1/1
6	IMD	D	603	-	-	-	0/1/1/1

All (2) bond length outliers are listed below:

Mol	Chain	Res	Type	Atoms	Z	Observed(Å)	Ideal(Å)
4	C	502[A]	ICS	S3A-FE5	2.85	2.31	2.24
4	A	502[A]	ICS	S3A-FE5	2.79	2.31	2.24

All (7) bond angle outliers are listed below:

Mol	Chain	Res	Type	Atoms	Z	Observed(°)	Ideal(°)
3	C	501	HCA	C4-C5-C6	3.01	119.75	112.77

Continued on next page...

Continued from previous page...

Mol	Chain	Res	Type	Atoms	Z	Observed(°)	Ideal(°)
3	A	501	HCA	C4-C5-C6	2.78	119.21	112.77
3	A	501	HCA	O6-C7-C3	2.74	118.40	113.14
3	C	501	HCA	O6-C7-C3	2.44	117.82	113.14
3	A	501	HCA	O4-C6-C5	2.37	121.47	114.00
3	A	501	HCA	O5-C7-C3	-2.21	117.81	122.09
3	A	501	HCA	O1-C1-C2	-2.03	117.20	122.95

There are no chirality outliers.

All (3) torsion outliers are listed below:

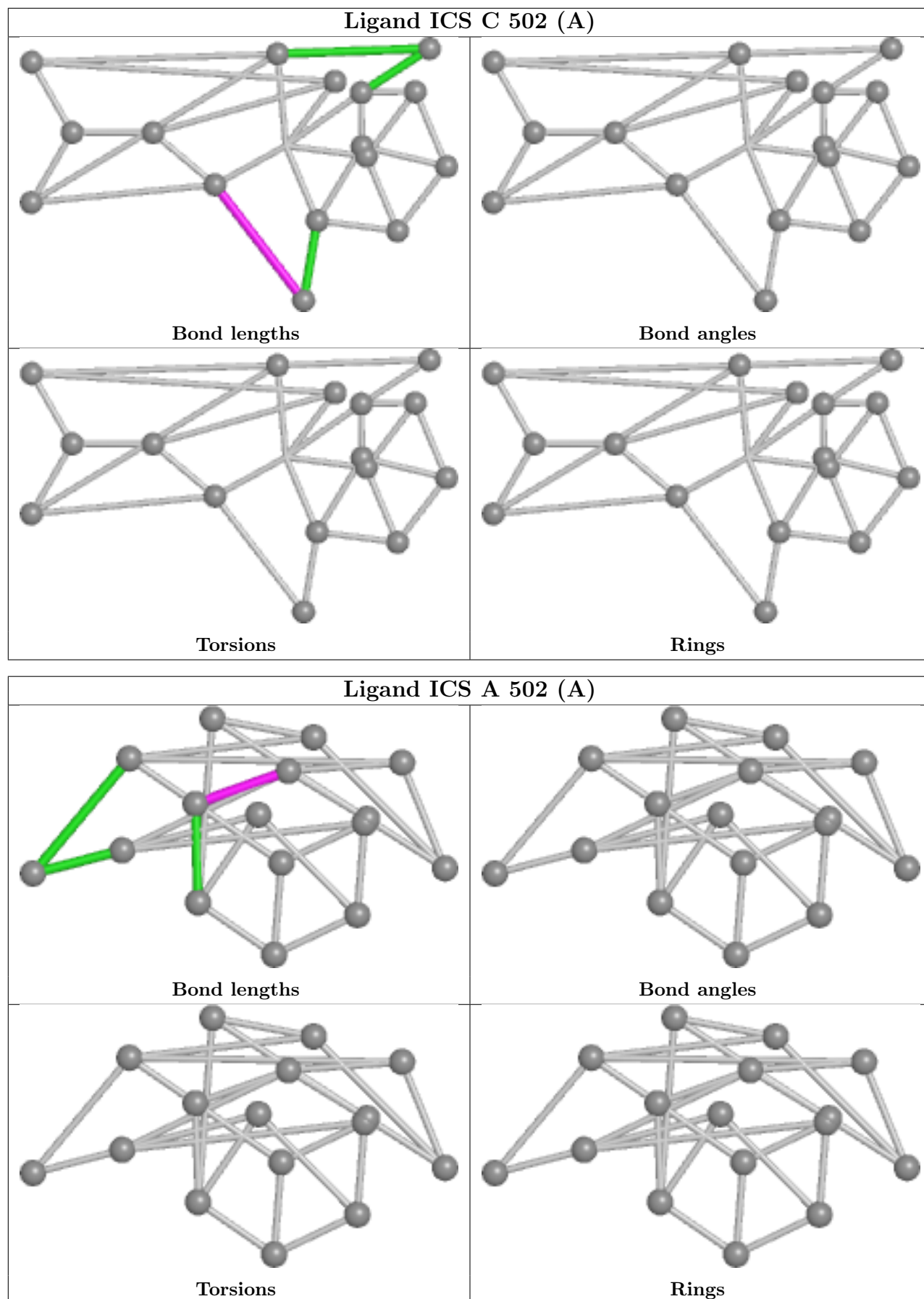
Mol	Chain	Res	Type	Atoms
3	A	501	HCA	C4-C3-C7-O6
3	A	501	HCA	O1-C1-C2-C3
3	A	501	HCA	O2-C1-C2-C3

There are no ring outliers.

9 monomers are involved in 11 short contacts:

Mol	Chain	Res	Type	Clashes	Symm-Clashes
5	A	503[B]	ICH	2	0
5	C	503[B]	ICH	1	0
6	C	504	IMD	1	0
6	D	601	IMD	1	0
3	A	501	HCA	2	0
3	C	501	HCA	1	0
6	B	603	IMD	1	0
6	B	601	IMD	1	0
6	D	603	IMD	1	0

The following is a two-dimensional graphical depiction of Mogul quality analysis of bond lengths, bond angles, torsion angles, and ring geometry for all instances of the Ligand of Interest. In addition, ligands with molecular weight > 250 and outliers as shown on the validation Tables will also be included. For torsion angles, if less than 5% of the Mogul distribution of torsion angles is within 10 degrees of the torsion angle in question, then that torsion angle is considered an outlier. Any bond that is central to one or more torsion angles identified as an outlier by Mogul will be highlighted in the graph. For rings, the root-mean-square deviation (RMSD) between the ring in question and similar rings identified by Mogul is calculated over all ring torsion angles. If the average RMSD is greater than 60 degrees and the minimal RMSD between the ring in question and any Mogul-identified rings is also greater than 60 degrees, then that ring is considered an outlier. The outliers are highlighted in purple. The color gray indicates Mogul did not find sufficient equivalents in the CSD to analyse the geometry.



5.7 Other polymers [i](#)

There are no such residues in this entry.

5.8 Polymer linkage issues [i](#)

There are no chain breaks in this entry.

6 Fit of model and data [i](#)

6.1 Protein, DNA and RNA chains [i](#)

In the following table, the column labelled ‘#RSRZ > 2’ contains the number (and percentage) of RSRZ outliers, followed by percent RSRZ outliers for the chain as percentile scores relative to all X-ray entries and entries of similar resolution. The OWAB column contains the minimum, median, 95th percentile and maximum values of the occupancy-weighted average B-factor per residue. The column labelled ‘Q < 0.9’ lists the number of (and percentage) of residues with an average occupancy less than 0.9.

Mol	Chain	Analysed	<RSRZ>	#RSRZ>2	OWAB(Å ²)	Q<0.9
1	A	477/492 (96%)	-0.41	4 (0%) 82 87	5, 12, 24, 39	22 (4%)
1	C	477/492 (96%)	-0.44	4 (0%) 82 87	5, 12, 23, 37	24 (5%)
2	B	522/523 (99%)	-0.52	1 (0%) 92 93	4, 11, 20, 27	21 (4%)
2	D	522/523 (99%)	-0.52	1 (0%) 92 93	4, 11, 21, 33	20 (3%)
All	All	1998/2030 (98%)	-0.48	10 (0%) 87 90	4, 11, 21, 39	87 (4%)

All (10) RSRZ outliers are listed below:

Mol	Chain	Res	Type	RSRZ
1	A	480[A]	GLU	8.8
2	D	125	PHE	5.3
1	C	38	ALA	5.2
2	B	125	PHE	4.2
1	A	38	ALA	4.1
1	A	39	VAL	3.6
1	C	39	VAL	3.5
1	C	40	THR	3.1
1	C	480	GLU	2.7
1	A	40	THR	2.4

6.2 Non-standard residues in protein, DNA, RNA chains [i](#)

There are no non-standard protein/DNA/RNA residues in this entry.

6.3 Carbohydrates [i](#)

There are no monosaccharides in this entry.

6.4 Ligands [i](#)

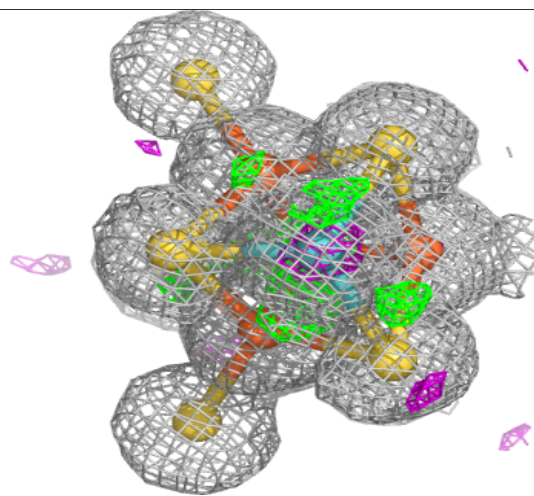
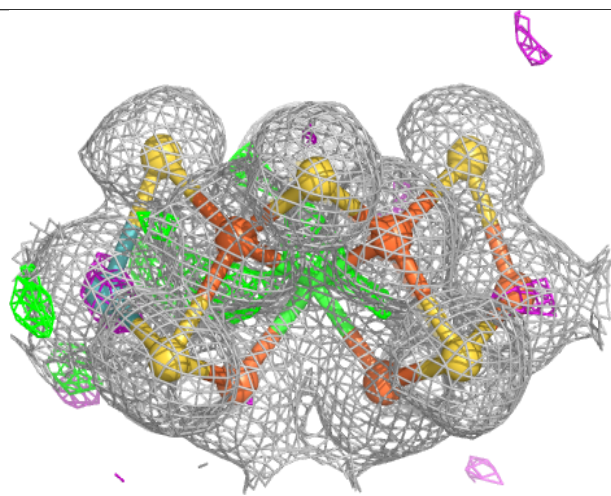
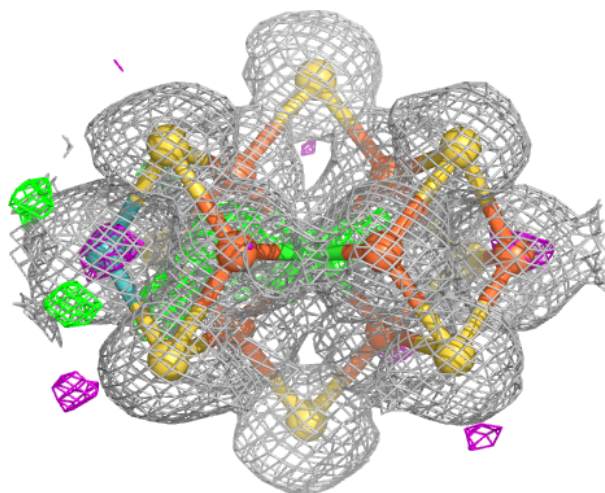
In the following table, the Atoms column lists the number of modelled atoms in the group and the number defined in the chemical component dictionary. The B-factors column lists the minimum, median, 95th percentile and maximum values of B factors of atoms in the group. The column labelled 'Q< 0.9' lists the number of atoms with occupancy less than 0.9.

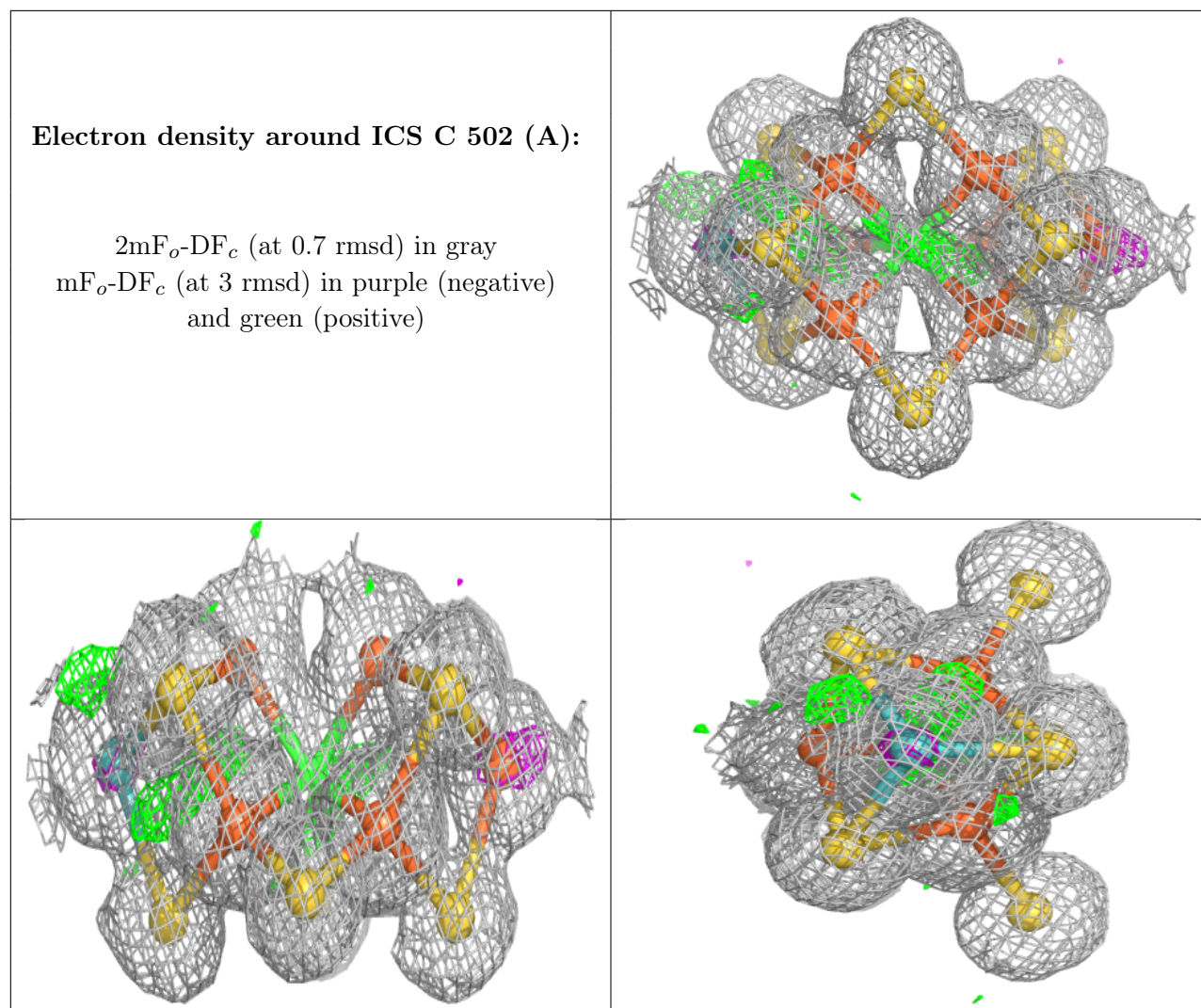
Mol	Type	Chain	Res	Atoms	RSCC	RSR	B-factors(Å ²)	Q<0.9
6	IMD	B	601	5/5	0.87	0.12	24,25,25,25	0
6	IMD	B	603	5/5	0.87	0.11	24,25,26,26	0
6	IMD	D	603	5/5	0.90	0.11	27,27,27,28	0
6	IMD	C	504	5/5	0.91	0.09	22,22,23,24	0
6	IMD	A	504	5/5	0.94	0.08	24,24,25,25	0
6	IMD	D	601	5/5	0.95	0.06	11,12,12,13	0
6	IMD	B	602	5/5	0.95	0.06	11,11,11,12	0
6	IMD	D	602	5/5	0.96	0.07	19,20,20,20	0
3	HCA	A	501	14/14	0.98	0.04	8,8,10,10	0
3	HCA	C	501	14/14	0.99	0.03	8,8,11,11	0
7	CL	A	505	1/1	0.99	0.03	11,11,11,11	1
8	CMO	A	506[C]	2/2	0.99	0.05	7,7,7,8	0
8	CMO	C	506[C]	2/2	0.99	0.05	7,7,7,7	0
5	ICH	C	503[B]	18/18	1.00	0.01	4,8,9,10	18
4	ICS	A	502[A]	17/18	1.00	0.01	7,8,9,9	17
7	CL	C	505	1/1	1.00	0.02	10,10,10,10	1
4	ICS	C	502[A]	17/18	1.00	0.01	7,8,8,9	17
5	ICH	A	503[B]	18/18	1.00	0.01	4,8,9,10	18
9	CLF	A	507	15/15	1.00	0.01	8,8,8,8	0
9	CLF	C	507	15/15	1.00	0.01	8,8,9,9	0
10	FE2	B	604	1/1	1.00	0.03	9,9,9,9	1
10	FE2	B	605	1/1	1.00	0.02	10,10,10,10	1

The following is a graphical depiction of the model fit to experimental electron density of all instances of the Ligand of Interest. In addition, ligands with molecular weight > 250 and outliers as shown on the geometry validation Tables will also be included. Each fit is shown from different orientation to approximate a three-dimensional view.

Electron density around ICS A 502 (A):

$2mF_o-DF_c$ (at 0.7 rmsd) in gray
 mF_o-DF_c (at 3 rmsd) in purple (negative)
and green (positive)





6.5 Other polymers [i](#)

There are no such residues in this entry.