



# Full wwPDB X-ray Structure Validation Report ⓘ

Dec 16, 2024 – 12:53 AM EST

PDB ID : 1BXG  
Title : PHENYLALANINE DEHYDROGENASE STRUCTURE IN TERNARY COMPLEX WITH NAD<sup>+</sup> AND BETA-PHENYLPROPIONATE  
Authors : Vanhooke, J.L.; Thoden, J.B.; Brunhuber, N.M.W.; Blanchard, J.L.; Holden, H.M.  
Deposited on : 1998-10-02  
Resolution : 2.30 Å(reported)

This is a Full wwPDB X-ray Structure Validation Report for a publicly released PDB entry.

We welcome your comments at [validation@mail.wwpdb.org](mailto:validation@mail.wwpdb.org)

A user guide is available at

<https://www.wwpdb.org/validation/2017/XrayValidationReportHelp>

with specific help available everywhere you see the ⓘ symbol.

The types of validation reports are described at

<http://www.wwpdb.org/validation/2017/FAQs#types>.

---

The following versions of software and data (see [references ⓘ](#)) were used in the production of this report:

MolProbity : 4.02b-467  
Mogul : 2022.3.0, CSD as543be (2022)  
Xtrriage (Phenix) : **NOT EXECUTED**  
EDS : **NOT EXECUTED**  
buster-report : 1.1.7 (2018)  
Percentile statistics : 20231227.v01 (using entries in the PDB archive December 27th 2023)  
Ideal geometry (proteins) : Engh & Huber (2001)  
Ideal geometry (DNA, RNA) : Parkinson et al. (1996)  
Validation Pipeline (wwPDB-VP) : 2.40

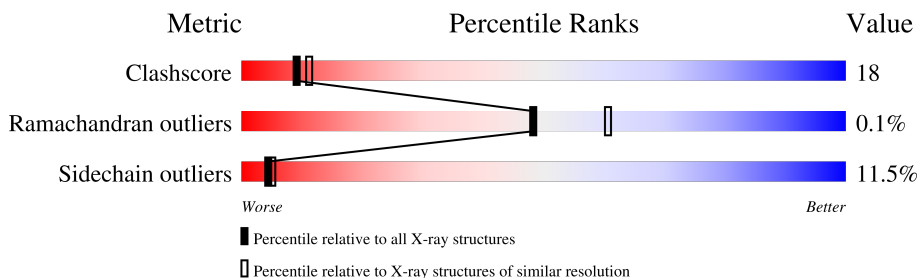
# 1 Overall quality at a glance

The following experimental techniques were used to determine the structure:

*X-RAY DIFFRACTION*

The reported resolution of this entry is 2.30 Å.

Percentile scores (ranging between 0-100) for global validation metrics of the entry are shown in the following graphic. The table shows the number of entries on which the scores are based.



Metric	Whole archive (#Entries)	Similar resolution (#Entries, resolution range(Å))
Clashscore	180529	6698 (2.30-2.30)
Ramachandran outliers	177936	6640 (2.30-2.30)
Sidechain outliers	177891	6640 (2.30-2.30)

The table below summarises the geometric issues observed across the polymeric chains and their fit to the electron density. The red, orange, yellow and green segments of the lower bar indicate the fraction of residues that contain outliers for  $\geq 3$ , 2, 1 and 0 types of geometric quality criteria respectively. A grey segment represents the fraction of residues that are not modelled. The numeric value for each fraction is indicated below the corresponding segment, with a dot representing fractions  $\leq 5\%$

Note EDS was not executed.

Mol	Chain	Length	Quality of chain
1	A	356	
2	B	356	

The following table lists non-polymeric compounds, carbohydrate monomers and non-standard residues in protein, DNA, RNA chains that are outliers for geometric or electron-density-fit criteria:

Mol	Type	Chain	Res	Chirality	Geometry	Clashes	Electron density
6	PO4	B	900	-	X	-	-

## 2 Entry composition [i](#)

There are 7 unique types of molecules in this entry. The entry contains 5318 atoms, of which 0 are hydrogens and 0 are deuteriums.

In the tables below, the ZeroOcc column contains the number of atoms modelled with zero occupancy, the AltConf column contains the number of residues with at least one atom in alternate conformation and the Trace column contains the number of residues modelled with at most 2 atoms.

- Molecule 1 is a protein called PHENYLALANINE DEHYDROGENASE.

Mol	Chain	Residues	Atoms					ZeroOcc	AltConf	Trace
			Total	C	N	O	S			
1	A	349	2517	1555	449	503	10	0	0	0

There are 2 discrepancies between the modelled and reference sequences:

Chain	Residue	Modelled	Actual	Comment	Reference
A	19	SER	ARG	SEE REMARK 999	UNP Q59771
A	20	LYS	GLU	SEE REMARK 999	UNP Q59771

- Molecule 2 is a protein called PHENYLALANINE DEHYDROGENASE.

Mol	Chain	Residues	Atoms					ZeroOcc	AltConf	Trace
			Total	C	N	O	S			
2	B	347	2510	1551	449	499	11	0	0	0

There is a discrepancy between the modelled and reference sequences:

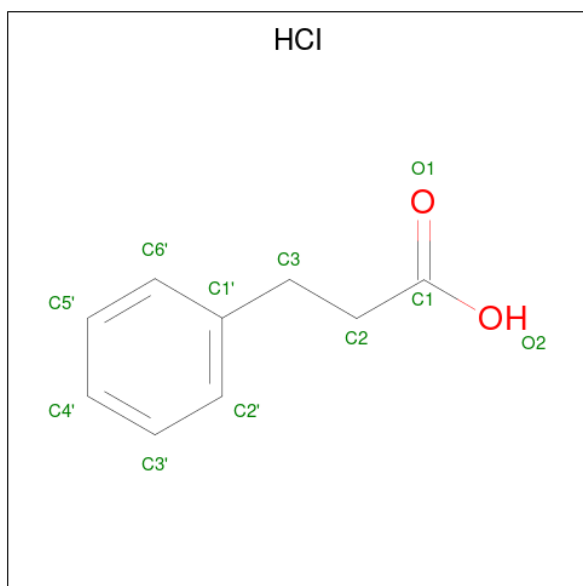
Chain	Residue	Modelled	Actual	Comment	Reference
B	420	MET	GLU	SEE REMARK 999	UNP Q59771

- Molecule 3 is NICOTINAMIDE-ADENINE-DINUCLEOTIDE (three-letter code: NAD) (formula: C<sub>21</sub>H<sub>27</sub>N<sub>7</sub>O<sub>14</sub>P<sub>2</sub>).



Mol	Chain	Residues	Atoms				ZeroOcc	AltConf	
			Total	C	N	O			P
3	A	1	44	21	7	14	2	0	0
3	B	1	44	21	7	14	2	0	0

- Molecule 4 is HYDROCINNAMIC ACID (three-letter code: HCI) (formula:  $C_9H_{10}O_2$ ).

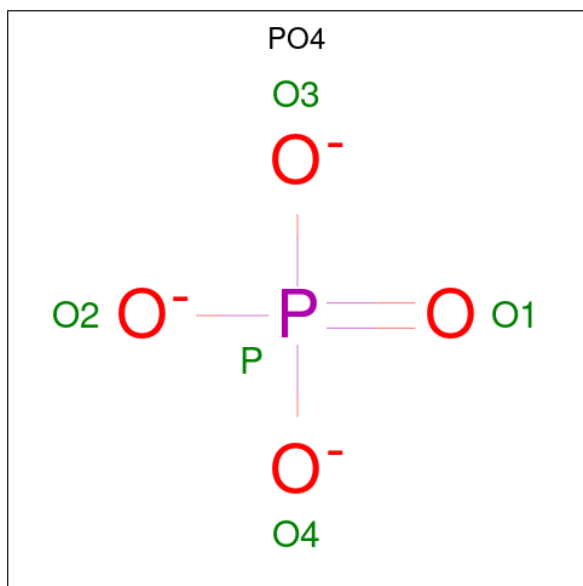


Mol	Chain	Residues	Atoms		ZeroOcc	AltConf
			Total	C O		
4	A	1	11	9 2	0	0
4	B	1	11	9 2	0	0

- Molecule 5 is POTASSIUM ION (three-letter code: K) (formula: K).

Mol	Chain	Residues	Atoms	ZeroOcc	AltConf
5	B	1	Total K 1 1	0	0

- Molecule 6 is PHOSPHATE ION (three-letter code: PO4) (formula: O<sub>4</sub>P).



Mol	Chain	Residues	Atoms	ZeroOcc	AltConf
6	B	1	Total O P 5 4 1	0	0

- Molecule 7 is water.

Mol	Chain	Residues	Atoms	ZeroOcc	AltConf
7	A	89	Total O 89 89	0	0
7	B	86	Total O 86 86	0	0

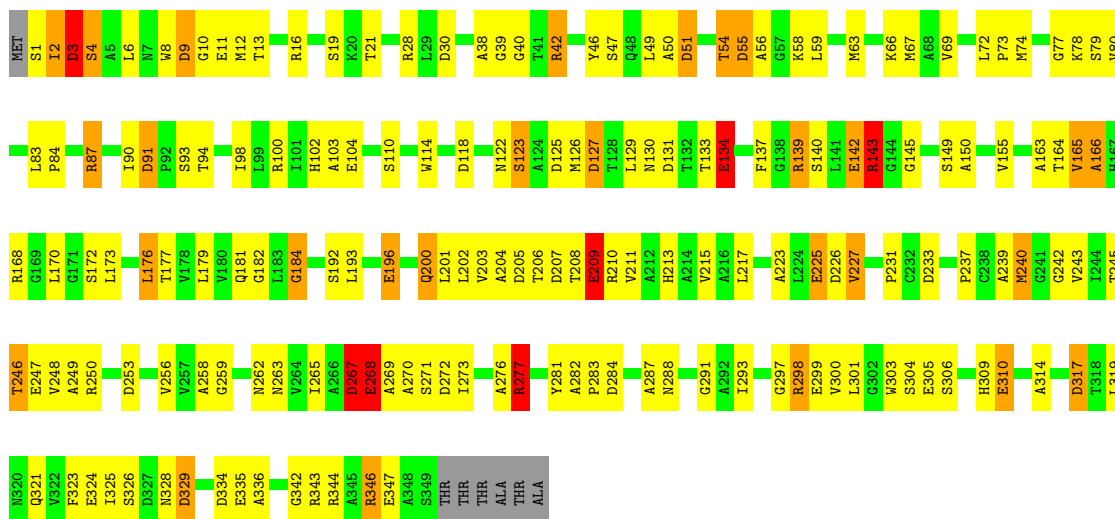
### 3 Residue-property plots

These plots are drawn for all protein, RNA, DNA and oligosaccharide chains in the entry. The first graphic for a chain summarises the proportions of the various outlier classes displayed in the second graphic. The second graphic shows the sequence view annotated by issues in geometry. Residues are color-coded according to the number of geometric quality criteria for which they contain at least one outlier: green = 0, yellow = 1, orange = 2 and red = 3 or more. Stretches of 2 or more consecutive residues without any outlier are shown as a green connector. Residues present in the sample, but not in the model, are shown in grey.

Note EDS was not executed.

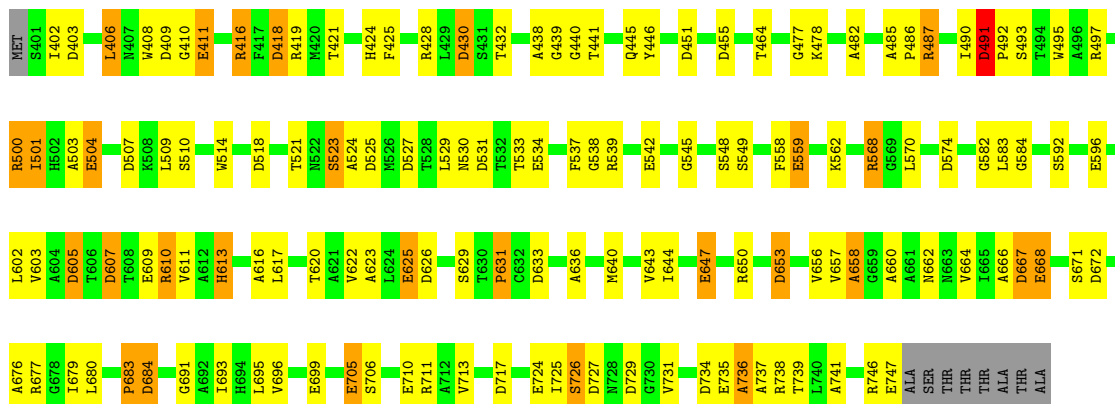
- Molecule 1: PHENYLALANINE DEHYDROGENASE

Chain A: 



- Molecule 2: PHENYLALANINE DEHYDROGENASE

Chain B: 



## 4 Data and refinement statistics

Xtrriage (Phenix) and EDS were not executed - this section is therefore incomplete.

Property	Value	Source
Space group	P 21 21 21	Depositor
Cell constants a, b, c, $\alpha$ , $\beta$ , $\gamma$	65.51Å 116.96Å 111.55Å 90.00° 90.00° 90.00°	Depositor
Resolution (Å)	30.00 – 2.30	Depositor
% Data completeness (in resolution range)	88.0 (30.00-2.30)	Depositor
$R_{merge}$	0.07	Depositor
$R_{sym}$	0.07	Depositor
Refinement program	TNT 5E	Depositor
R, $R_{free}$	0.170 , (Not available)	Depositor
Estimated twinning fraction	No twinning to report.	Xtrriage
Total number of atoms	5318	wwPDB-VP
Average B, all atoms (Å <sup>2</sup> )	29.0	wwPDB-VP

## 5 Model quality [i](#)

### 5.1 Standard geometry [i](#)

Bond lengths and bond angles in the following residue types are not validated in this section: K, HCl, PO4, NAD

The Z score for a bond length (or angle) is the number of standard deviations the observed value is removed from the expected value. A bond length (or angle) with  $|Z| > 5$  is considered an outlier worth inspection. RMSZ is the root-mean-square of all Z scores of the bond lengths (or angles).

Mol	Chain	Bond lengths		Bond angles	
		RMSZ	# Z  >5	RMSZ	# Z  >5
1	A	1.02	15/2555 (0.6%)	1.69	57/3480 (1.6%)
2	B	1.01	17/2548 (0.7%)	1.67	74/3470 (2.1%)
All	All	1.02	32/5103 (0.6%)	1.68	131/6950 (1.9%)

All (32) bond length outliers are listed below:

Mol	Chain	Res	Type	Atoms	Z	Observed(Å)	Ideal(Å)
1	A	196	GLU	CD-OE2	8.82	1.35	1.25
2	B	747	GLU	CD-OE1	8.66	1.35	1.25
1	A	335	GLU	CD-OE1	8.05	1.34	1.25
2	B	559	GLU	CD-OE2	7.93	1.34	1.25
1	A	142	GLU	CD-OE2	7.92	1.34	1.25
1	A	268	GLU	CD-OE2	7.50	1.33	1.25
2	B	710	GLU	CD-OE1	7.39	1.33	1.25
2	B	735	GLU	CD-OE1	7.26	1.33	1.25
2	B	724	GLU	CD-OE1	7.16	1.33	1.25
1	A	310	GLU	CD-OE2	7.02	1.33	1.25
2	B	504	GLU	CD-OE1	6.78	1.33	1.25
1	A	347	GLU	CD-OE1	6.75	1.33	1.25
2	B	705	GLU	CD-OE1	6.55	1.32	1.25
1	A	225	GLU	CD-OE1	6.42	1.32	1.25
1	A	104	GLU	CD-OE1	6.42	1.32	1.25
2	B	596	GLU	CD-OE1	6.31	1.32	1.25
1	A	299	GLU	CD-OE1	6.28	1.32	1.25
2	B	625	GLU	CD-OE1	6.21	1.32	1.25
1	A	134	GLU	CD-OE1	6.04	1.32	1.25
2	B	668	GLU	CD-OE1	6.03	1.32	1.25
2	B	534	GLU	CD-OE1	5.94	1.32	1.25
2	B	609	GLU	CD-OE1	5.82	1.32	1.25
2	B	647	GLU	CD-OE2	5.74	1.31	1.25
1	A	324	GLU	CD-OE1	5.65	1.31	1.25

*Continued on next page...*



*Continued from previous page...*

Mol	Chain	Res	Type	Atoms	Z	Observed(Å)	Ideal(Å)
2	B	409	ASP	CG-OD1	5.59	1.38	1.25
1	A	299	GLU	CD-OE2	-5.49	1.19	1.25
2	B	699	GLU	CD-OE2	5.47	1.31	1.25
1	A	209	GLU	CD-OE1	5.13	1.31	1.25
2	B	542	GLU	CD-OE2	5.13	1.31	1.25
1	A	305	GLU	CD-OE2	5.11	1.31	1.25
1	A	9	ASP	CG-OD1	5.04	1.36	1.25
2	B	411	GLU	CD-OE1	5.02	1.31	1.25

All (131) bond angle outliers are listed below:

Mol	Chain	Res	Type	Atoms	Z	Observed(°)	Ideal(°)
2	B	416	ARG	NE-CZ-NH1	13.44	127.02	120.30
2	B	711	ARG	NE-CZ-NH2	-13.39	113.61	120.30
1	A	277	ARG	NE-CZ-NH1	11.55	126.08	120.30
1	A	16	ARG	NE-CZ-NH2	-11.09	114.75	120.30
1	A	42	ARG	NE-CZ-NH1	10.30	125.45	120.30
1	A	46	TYR	CB-CG-CD1	-10.28	114.83	121.00
2	B	416	ARG	NE-CZ-NH2	-9.56	115.52	120.30
1	A	125	ASP	CB-CG-OD1	-9.43	109.81	118.30
1	A	343	ARG	NE-CZ-NH1	9.37	124.98	120.30
1	A	298	ARG	NE-CZ-NH2	-9.30	115.65	120.30
2	B	734	ASP	CB-CG-OD2	-9.20	110.02	118.30
1	A	334	ASP	CB-CG-OD1	8.96	126.36	118.30
2	B	409	ASP	CB-CG-OD1	-8.88	110.31	118.30
1	A	334	ASP	CB-CG-OD2	-8.86	110.33	118.30
1	A	100	ARG	NE-CZ-NH2	-8.60	116.00	120.30
1	A	343	ARG	NE-CZ-NH2	-8.53	116.03	120.30
1	A	131	ASP	CB-CG-OD1	-8.48	110.67	118.30
1	A	30	ASP	CB-CG-OD2	-8.45	110.69	118.30
1	A	16	ARG	NE-CZ-NH1	8.40	124.50	120.30
1	A	143	ARG	NE-CZ-NH1	8.38	124.49	120.30
2	B	667	ASP	CB-CG-OD2	8.18	125.66	118.30
1	A	233	ASP	CB-CG-OD1	-7.86	111.23	118.30
2	B	613	HIS	N-CA-CB	-7.80	96.55	110.60
2	B	430	ASP	CB-CG-OD2	-7.64	111.42	118.30
2	B	633	ASP	CB-CG-OD1	-7.58	111.48	118.30
1	A	272	ASP	CB-CG-OD1	7.49	125.04	118.30
2	B	607	ASP	CB-CG-OD2	7.46	125.01	118.30
2	B	667	ASP	CB-CG-OD1	-7.42	111.62	118.30
2	B	409	ASP	CB-CG-OD2	7.39	124.95	118.30
1	A	150	ALA	N-CA-CB	7.35	120.39	110.10

*Continued on next page...*

*Continued from previous page...*

Mol	Chain	Res	Type	Atoms	Z	Observed(°)	Ideal(°)
1	A	91	ASP	CB-CG-OD1	7.34	124.91	118.30
2	B	677	ARG	NE-CZ-NH1	7.24	123.92	120.30
2	B	568	ARG	NE-CZ-NH2	-7.23	116.68	120.30
2	B	523	SER	CB-CA-C	7.21	123.81	110.10
2	B	568	ARG	NE-CZ-NH1	7.13	123.86	120.30
1	A	284	ASP	CB-CG-OD2	7.11	124.70	118.30
1	A	125	ASP	CB-CG-OD2	7.09	124.68	118.30
2	B	451	ASP	CB-CG-OD1	-7.02	111.98	118.30
2	B	430	ASP	CB-CG-OD1	6.90	124.51	118.30
2	B	672	ASP	CB-CG-OD2	-6.90	112.09	118.30
1	A	287	ALA	N-CA-CB	-6.89	100.45	110.10
2	B	574	ASP	CB-CG-OD2	6.86	124.47	118.30
2	B	464	THR	CA-CB-CG2	-6.85	102.81	112.40
2	B	677	ARG	NE-CZ-NH2	-6.83	116.88	120.30
1	A	131	ASP	CB-CG-OD2	6.78	124.40	118.30
2	B	441	THR	CA-CB-CG2	-6.71	103.00	112.40
2	B	574	ASP	CB-CG-OD1	-6.71	112.26	118.30
1	A	298	ARG	NE-CZ-NH1	6.71	123.65	120.30
1	A	3	ASP	CB-CG-OD2	-6.67	112.30	118.30
1	A	21	THR	CA-CB-CG2	-6.57	103.21	112.40
1	A	143	ARG	NE-CZ-NH2	-6.53	117.03	120.30
2	B	741	ALA	CB-CA-C	-6.50	100.35	110.10
1	A	46	TYR	CB-CG-CD2	6.49	124.90	121.00
1	A	210	ARG	NE-CZ-NH1	6.45	123.52	120.30
2	B	418	ASP	CB-CG-OD1	-6.43	112.52	118.30
2	B	518	ASP	CB-CG-OD1	6.37	124.03	118.30
2	B	711	ARG	NE-CZ-NH1	6.36	123.48	120.30
2	B	537	PHE	CB-CA-C	-6.36	97.68	110.40
2	B	607	ASP	CB-CG-OD1	-6.28	112.64	118.30
1	A	226	ASP	CB-CG-OD1	-6.26	112.66	118.30
1	A	55	ASP	CB-CG-OD2	-6.18	112.74	118.30
1	A	91	ASP	CB-CG-OD2	-6.18	112.74	118.30
1	A	267	ASP	CB-CG-OD2	6.16	123.84	118.30
1	A	317	ASP	CB-CG-OD1	-6.15	112.76	118.30
2	B	491	ASP	CB-CG-OD1	-6.15	112.77	118.30
2	B	710	GLU	N-CA-CB	-6.14	99.55	110.60
1	A	166	ALA	CB-CA-C	-6.11	100.94	110.10
2	B	500	ARG	NE-CZ-NH1	6.03	123.32	120.30
1	A	233	ASP	CB-CG-OD2	6.03	123.73	118.30
1	A	30	ASP	CB-CG-OD1	6.03	123.73	118.30
2	B	451	ASP	CB-CG-OD2	6.01	123.71	118.30
2	B	736	ALA	CB-CA-C	5.97	119.06	110.10

*Continued on next page...*

*Continued from previous page...*

Mol	Chain	Res	Type	Atoms	Z	Observed(°)	Ideal(°)
2	B	672	ASP	CB-CG-OD1	5.97	123.67	118.30
2	B	633	ASP	CB-CG-OD2	5.96	123.67	118.30
1	A	51	ASP	CB-CG-OD2	5.94	123.64	118.30
2	B	428	ARG	NE-CZ-NH2	-5.93	117.34	120.30
2	B	676	ALA	CB-CA-C	-5.92	101.23	110.10
2	B	717	ASP	CB-CG-OD2	5.92	123.62	118.30
2	B	491	ASP	CB-CG-OD2	5.89	123.60	118.30
2	B	727	ASP	CB-CG-OD1	-5.88	113.01	118.30
2	B	734	ASP	CB-CG-OD1	5.85	123.57	118.30
1	A	258	ALA	N-CA-CB	5.84	118.28	110.10
2	B	653	ASP	CB-CG-OD1	-5.75	113.12	118.30
2	B	518	ASP	CB-CG-OD2	-5.74	113.13	118.30
2	B	610	ARG	CA-CB-CG	-5.71	100.84	113.40
1	A	49	LEU	CB-CA-C	5.68	120.98	110.20
2	B	418	ASP	CB-CG-OD2	5.64	123.38	118.30
2	B	623	ALA	N-CA-CB	5.63	117.98	110.10
1	A	143	ARG	CD-NE-CZ	5.62	131.46	123.60
1	A	276	ALA	CB-CA-C	-5.61	101.69	110.10
2	B	605	ASP	CB-CG-OD2	5.60	123.34	118.30
2	B	650	ARG	NE-CZ-NH1	5.59	123.10	120.30
1	A	100	ARG	NE-CZ-NH1	5.58	123.09	120.30
2	B	521	THR	N-CA-CB	5.55	120.84	110.30
1	A	346	ARG	NE-CZ-NH1	5.55	123.07	120.30
1	A	87	ARG	NE-CZ-NH1	-5.54	117.53	120.30
1	A	250	ARG	N-CA-CB	-5.50	100.69	110.60
1	A	127	ASP	CB-CG-OD1	-5.49	113.36	118.30
2	B	738	ARG	NE-CZ-NH1	5.48	123.04	120.30
2	B	500	ARG	NE-CZ-NH2	-5.45	117.57	120.30
2	B	666	ALA	CB-CA-C	5.43	118.25	110.10
2	B	531	ASP	N-CA-CB	5.42	120.35	110.60
2	B	660	ALA	N-CA-CB	-5.41	102.53	110.10
2	B	653	ASP	CB-CG-OD2	5.41	123.16	118.30
1	A	329	ASP	CB-CG-OD1	-5.40	113.44	118.30
1	A	227	VAL	CA-CB-CG1	-5.39	102.82	110.90
2	B	626	ASP	CB-CG-OD2	5.37	123.13	118.30
1	A	51	ASP	CB-CG-OD1	-5.36	113.48	118.30
2	B	738	ARG	NE-CZ-NH2	-5.36	117.62	120.30
2	B	724	GLU	CB-CA-C	5.35	121.11	110.40
1	A	203	VAL	CA-CB-CG1	-5.34	102.88	110.90
2	B	487	ARG	NE-CZ-NH2	-5.33	117.63	120.30
2	B	631	PRO	N-CA-CB	5.31	109.67	103.30
1	A	118	ASP	N-CA-CB	5.30	120.14	110.60

*Continued on next page...*

Continued from previous page...

Mol	Chain	Res	Type	Atoms	Z	Observed(°)	Ideal(°)
2	B	455	ASP	CB-CG-OD1	-5.26	113.56	118.30
2	B	525	ASP	CB-CG-OD1	-5.23	113.59	118.30
2	B	446	TYR	CB-CG-CD1	-5.22	117.87	121.00
1	A	192	SER	N-CA-CB	5.21	118.31	110.50
2	B	717	ASP	CB-CG-OD1	-5.20	113.62	118.30
1	A	155	VAL	CG1-CB-CG2	-5.17	102.62	110.90
2	B	403	ASP	CB-CG-OD2	-5.13	113.68	118.30
2	B	696	VAL	CA-CB-CG2	-5.13	103.21	110.90
2	B	693	ILE	CA-CB-CG1	-5.12	101.27	111.00
2	B	729	ASP	CB-CG-OD1	-5.10	113.71	118.30
1	A	272	ASP	CB-CG-OD2	-5.09	113.72	118.30
2	B	650	ARG	CB-CA-C	-5.08	100.23	110.40
1	A	118	ASP	CB-CG-OD1	5.08	122.87	118.30
2	B	658	ALA	CB-CA-C	5.02	117.62	110.10
1	A	9	ASP	CA-CB-CG	-5.01	102.38	113.40
2	B	683	PRO	N-CA-CB	5.00	109.31	103.30
2	B	501	ILE	CA-CB-CG1	-5.00	101.50	111.00

There are no chirality outliers.

There are no planarity outliers.

## 5.2 Too-close contacts [i](#)

In the following table, the Non-H and H(model) columns list the number of non-hydrogen atoms and hydrogen atoms in the chain respectively. The H(added) column lists the number of hydrogen atoms added and optimized by MolProbity. The Clashes column lists the number of clashes within the asymmetric unit, whereas Symm-Clashes lists symmetry-related clashes.

Mol	Chain	Non-H	H(model)	H(added)	Clashes	Symm-Clashes
1	A	2517	0	2474	109	0
2	B	2510	0	2465	73	0
3	A	44	0	26	1	0
3	B	44	0	26	8	0
4	A	11	0	9	0	0
4	B	11	0	9	1	0
5	B	1	0	0	0	0
6	B	5	0	0	0	0
7	A	89	0	0	7	0
7	B	86	0	0	2	0
All	All	5318	0	5009	183	0

The all-atom clashscore is defined as the number of clashes found per 1000 atoms (including hydrogen atoms). The all-atom clashscore for this structure is 18.

All (183) close contacts within the same asymmetric unit are listed below, sorted by their clash magnitude.

Atom-1	Atom-2	Interatomic distance (Å)	Clash overlap (Å)
2:B:402:ILE:HG23	2:B:406:LEU:HD12	1.36	1.03
2:B:584:GLY:HA2	2:B:610:ARG:HH21	1.27	0.98
1:A:8:TRP:CZ3	1:A:10:GLY:HA3	1.99	0.97
1:A:8:TRP:CH2	1:A:10:GLY:HA3	2.05	0.92
1:A:173:LEU:HA	1:A:176:LEU:HD12	1.59	0.83
2:B:486:PRO:O	2:B:490:ILE:HD12	1.78	0.83
2:B:607:ASP:O	2:B:611:VAL:HG23	1.80	0.80
1:A:140:SER:OG	1:A:143:ARG:HB2	1.82	0.79
1:A:50:ALA:O	1:A:54:THR:HG23	1.83	0.79
2:B:402:ILE:CG2	2:B:406:LEU:HD12	2.14	0.78
2:B:402:ILE:HG23	2:B:406:LEU:CD1	2.13	0.78
2:B:440:GLY:H	2:B:478:LYS:HZ3	1.30	0.77
2:B:613:HIS:O	2:B:617:LEU:HG	1.85	0.76
2:B:440:GLY:H	2:B:478:LYS:NZ	1.85	0.74
1:A:87:ARG:HA	1:A:90:ILE:HD12	1.67	0.74
1:A:267:ASP:HB2	1:A:268:GLU:OE1	1.89	0.73
1:A:215:VAL:HG13	7:A:428:HOH:O	1.89	0.73
1:A:38:ALA:HB2	1:A:74:MET:CE	2.19	0.73
2:B:605:ASP:HA	3:B:760:NAD:C2A	2.19	0.72
2:B:605:ASP:OD2	3:B:760:NAD:H1B	1.90	0.72
1:A:40:GLY:H	1:A:78:LYS:NZ	1.88	0.71
1:A:165:VAL:HG13	1:A:170:LEU:HB2	1.73	0.70
1:A:91:ASP:OD1	1:A:94:THR:N	2.22	0.70
2:B:485:ALA:HB1	2:B:486:PRO:HD2	1.75	0.68
1:A:38:ALA:HB2	1:A:74:MET:HE3	1.76	0.67
2:B:539:ARG:O	2:B:545:GLY:HA3	1.94	0.67
1:A:177:THR:CG2	1:A:202:LEU:HD11	2.25	0.67
2:B:584:GLY:HA2	2:B:610:ARG:NH2	2.08	0.66
1:A:51:ASP:N	1:A:51:ASP:OD1	2.29	0.66
1:A:2:ILE:HG22	1:A:3:ASP:N	2.11	0.66
1:A:123:SER:O	1:A:126:MET:HB2	1.95	0.65
1:A:325:ILE:HB	1:A:336:ALA:HB1	1.77	0.65
1:A:165:VAL:HG12	1:A:166:ALA:N	2.13	0.64
1:A:172:SER:O	1:A:176:LEU:HD11	1.98	0.64
2:B:485:ALA:O	2:B:490:ILE:HD11	1.98	0.64
2:B:684:ASP:HB3	7:B:64:HOH:O	1.98	0.63
1:A:134:GLU:O	1:A:134:GLU:HG3	1.99	0.63

*Continued on next page...*

*Continued from previous page...*

Atom-1	Atom-2	Interatomic distance (Å)	Clash overlap (Å)
2:B:418:ASP:OD2	2:B:421:THR:HG23	1.99	0.62
1:A:56:ALA:HB2	1:A:80:VAL:CG2	2.29	0.62
2:B:605:ASP:OD1	3:B:760:NAD:O2B	2.17	0.61
1:A:9:ASP:OD2	2:B:419:ARG:NH1	2.35	0.60
1:A:40:GLY:H	1:A:78:LYS:HZ2	1.50	0.60
2:B:613:HIS:O	2:B:616:ALA:HB3	2.02	0.59
2:B:530:ASN:HA	2:B:533:THR:O	2.04	0.58
1:A:314:ALA:O	1:A:317:ASP:HB3	2.03	0.58
1:A:273:ILE:O	1:A:277:ARG:HG3	2.03	0.58
1:A:122:ASN:O	1:A:126:MET:HG2	2.04	0.58
1:A:268:GLU:OE1	1:A:269:ALA:N	2.33	0.58
2:B:582:GLY:HA2	3:B:760:NAD:N3A	2.18	0.57
2:B:683:PRO:HG2	2:B:737:ALA:HB2	1.85	0.57
1:A:8:TRP:CE3	1:A:10:GLY:HA3	2.38	0.57
2:B:439:GLY:HA3	2:B:477:GLY:O	2.06	0.55
2:B:523:SER:HB2	2:B:538:GLY:O	2.06	0.55
1:A:127:ASP:OD2	1:A:140:SER:HB3	2.08	0.54
1:A:269:ALA:O	1:A:273:ILE:HG13	2.08	0.54
1:A:282:ALA:HB1	1:A:319:LEU:HD11	1.90	0.53
2:B:500:ARG:O	2:B:500:ARG:HG2	2.04	0.53
2:B:605:ASP:HA	3:B:760:NAD:H2A	1.89	0.53
1:A:149:SER:HB2	1:A:291:GLY:HA2	1.91	0.53
2:B:500:ARG:O	2:B:504:GLU:HG3	2.08	0.53
2:B:605:ASP:HA	3:B:760:NAD:N3A	2.24	0.52
1:A:1:SER:HB3	1:A:4:SER:HB2	1.92	0.52
2:B:418:ASP:OD1	2:B:497:ARG:NH2	2.41	0.52
1:A:249:ALA:O	1:A:277:ARG:NH1	2.43	0.52
2:B:549:SER:HB2	2:B:691:GLY:HA2	1.93	0.51
1:A:268:GLU:CD	1:A:269:ALA:H	2.13	0.51
1:A:237:PRO:HD2	1:A:259:GLY:HA3	1.93	0.50
2:B:438:ALA:HA	2:B:514:TRP:O	2.11	0.50
2:B:487:ARG:HB3	7:B:92:HOH:O	2.11	0.50
2:B:558:PHE:O	2:B:562:LYS:HG3	2.11	0.50
1:A:240:MET:CE	1:A:243:VAL:CG1	2.90	0.50
1:A:163:ALA:O	1:A:166:ALA:HB3	2.12	0.50
1:A:242:GLY:N	1:A:263:ASN:O	2.43	0.50
1:A:300:VAL:HG12	1:A:301:LEU:N	2.26	0.50
1:A:39:GLY:HA3	1:A:77:GLY:O	2.12	0.49
1:A:56:ALA:HB2	1:A:80:VAL:HG21	1.93	0.49
2:B:424:HIS:HB2	2:B:482:ALA:HB3	1.93	0.49
1:A:42:ARG:NH1	7:A:362:HOH:O	2.11	0.49

*Continued on next page...*

*Continued from previous page...*

Atom-1	Atom-2	Interatomic distance (Å)	Clash overlap (Å)
1:A:173:LEU:CA	1:A:176:LEU:HD12	2.36	0.49
2:B:636:ALA:HA	2:B:658:ALA:O	2.12	0.49
1:A:323:PHE:O	1:A:326:SER:HB3	2.12	0.49
1:A:127:ASP:OD1	1:A:139:ARG:HG2	2.13	0.48
1:A:200:GLN:C	1:A:201:LEU:HD23	2.33	0.48
1:A:40:GLY:H	1:A:78:LYS:HZ1	1.62	0.48
1:A:56:ALA:HB2	1:A:80:VAL:HG23	1.96	0.48
1:A:181:GLN:HE21	1:A:237:PRO:HA	1.79	0.48
1:A:170:LEU:HD23	1:A:170:LEU:N	2.28	0.48
2:B:602:LEU:HD23	2:B:620:THR:HB	1.96	0.48
2:B:411:GLU:HG3	2:B:430:ASP:O	2.14	0.47
2:B:644:ILE:HD12	2:B:664:VAL:CG1	2.44	0.47
1:A:246:THR:HG22	1:A:247:GLU:N	2.27	0.47
1:A:13:THR:HG23	1:A:28:ARG:HG2	1.97	0.47
1:A:245:THR:OG1	1:A:248:VAL:HG23	2.14	0.47
1:A:248:VAL:O	1:A:248:VAL:HG12	2.14	0.47
2:B:491:ASP:HB2	2:B:492:PRO:HD2	1.97	0.47
2:B:726:SER:HA	2:B:731:VAL:CG2	2.44	0.47
1:A:87:ARG:CA	1:A:90:ILE:HD12	2.39	0.47
1:A:173:LEU:HA	1:A:173:LEU:HD12	1.56	0.47
2:B:656:VAL:CG1	2:B:657:VAL:N	2.77	0.47
1:A:91:ASP:OD1	1:A:91:ASP:O	2.33	0.47
1:A:342:GLY:O	1:A:346:ARG:HG3	2.14	0.47
1:A:2:ILE:CG2	1:A:3:ASP:N	2.76	0.46
1:A:240:MET:HE1	1:A:243:VAL:CG1	2.46	0.46
1:A:268:GLU:CG	1:A:269:ALA:H	2.28	0.46
2:B:668:GLU:O	2:B:668:GLU:HG3	2.16	0.46
1:A:11:GLU:O	1:A:12:MET:HB2	2.15	0.46
2:B:503:ALA:HB2	2:B:529:LEU:CD2	2.44	0.46
1:A:325:ILE:O	1:A:329:ASP:HB2	2.16	0.46
2:B:559:GLU:HG3	2:B:713:VAL:HA	1.97	0.46
1:A:114:TRP:HB3	1:A:137:PHE:CE2	2.51	0.46
2:B:656:VAL:HG12	2:B:657:VAL:N	2.30	0.46
2:B:726:SER:HA	2:B:731:VAL:HG23	1.97	0.45
1:A:265:ILE:HG22	1:A:267:ASP:O	2.16	0.45
2:B:662:ASN:ND2	4:B:761:HCl:O1	2.41	0.45
1:A:63:MET:O	1:A:67:MET:HG2	2.17	0.45
2:B:491:ASP:CB	2:B:492:PRO:HD2	2.47	0.45
1:A:38:ALA:CB	1:A:74:MET:CE	2.92	0.45
1:A:231:PRO:HA	1:A:253:ASP:HB3	1.97	0.45
2:B:631:PRO:HA	2:B:653:ASP:HB3	1.99	0.45

*Continued on next page...*



*Continued from previous page...*

Atom-1	Atom-2	Interatomic distance (Å)	Clash overlap (Å)
1:A:72:LEU:HA	1:A:73:PRO:HD3	1.83	0.44
1:A:309:HIS:CD2	1:A:309:HIS:C	2.91	0.44
2:B:644:ILE:O	2:B:644:ILE:HG22	2.16	0.44
2:B:731:VAL:HG23	2:B:736:ALA:HB2	1.99	0.44
2:B:695:LEU:HD23	2:B:695:LEU:HA	1.61	0.44
1:A:103:ALA:HB2	1:A:129:LEU:HD22	1.98	0.44
1:A:223:ALA:O	1:A:227:VAL:HG23	2.18	0.44
2:B:605:ASP:OD2	3:B:760:NAD:O3B	2.31	0.44
1:A:6:LEU:HD23	1:A:6:LEU:HA	1.84	0.44
2:B:680:LEU:HA	2:B:680:LEU:HD12	1.76	0.44
1:A:240:MET:CE	1:A:243:VAL:HG12	2.48	0.43
3:B:760:NAD:H71N	3:B:760:NAD:H4N	1.35	0.43
1:A:184:GLY:N	7:A:369:HOH:O	2.46	0.43
1:A:213:HIS:CD2	1:A:217:LEU:HD11	2.53	0.43
1:A:267:ASP:O	1:A:270:ALA:HB3	2.19	0.43
1:A:298:ARG:HD2	1:A:303:TRP:O	2.18	0.43
1:A:319:LEU:HD23	1:A:319:LEU:HA	1.86	0.43
1:A:69:VAL:O	1:A:344:ARG:NH1	2.42	0.43
1:A:127:ASP:O	1:A:130:ASN:HB3	2.17	0.43
1:A:182:GLY:HA3	1:A:239:ALA:HB2	1.99	0.43
1:A:139:ARG:O	1:A:145:GLY:HA3	2.18	0.43
1:A:207:ASP:O	1:A:211:VAL:HG23	2.19	0.43
2:B:524:ALA:O	2:B:527:ASP:HB2	2.19	0.43
1:A:164:THR:HG21	1:A:256:VAL:HG13	1.99	0.43
1:A:328:ASN:N	1:A:328:ASN:HD22	2.17	0.43
1:A:59:LEU:O	1:A:63:MET:HG2	2.18	0.43
1:A:66:LYS:HE2	1:A:288:ASN:OD1	2.18	0.43
2:B:568:ARG:HG3	2:B:568:ARG:HH11	1.83	0.43
2:B:607:ASP:O	2:B:610:ARG:HB2	2.19	0.43
1:A:281:TYR:O	1:A:283:PRO:HD3	2.18	0.43
2:B:495:TRP:HA	2:B:495:TRP:CE3	2.54	0.43
1:A:38:ALA:CB	1:A:74:MET:HE2	2.49	0.43
1:A:129:LEU:HD23	1:A:129:LEU:HA	1.65	0.42
1:A:173:LEU:HA	1:A:176:LEU:CD1	2.42	0.42
1:A:263:ASN:HB3	7:A:417:HOH:O	2.18	0.42
2:B:679:ILE:HG21	2:B:679:ILE:HD13	1.73	0.42
1:A:83:LEU:HA	1:A:84:PRO:HD3	1.79	0.42
2:B:501:ILE:O	2:B:504:GLU:HB2	2.20	0.42
2:B:529:LEU:HA	2:B:529:LEU:HD23	1.75	0.42
1:A:4:SER:HB3	7:A:386:HOH:O	2.20	0.42
1:A:102:HIS:CE1	7:A:390:HOH:O	2.72	0.42

*Continued on next page...*



Continued from previous page...

Atom-1	Atom-2	Interatomic distance (Å)	Clash overlap (Å)
2:B:503:ALA:HB2	2:B:529:LEU:HD22	2.01	0.42
1:A:204:ALA:O	1:A:205:ASP:HB2	2.19	0.42
1:A:297:GLY:O	1:A:303:TRP:N	2.53	0.42
2:B:603:VAL:O	2:B:622:VAL:N	2.52	0.42
2:B:617:LEU:HA	2:B:617:LEU:HD23	1.76	0.42
2:B:408:TRP:CH2	2:B:410:GLY:HA3	2.55	0.41
2:B:509:LEU:HD23	2:B:509:LEU:HA	1.80	0.41
1:A:306:SER:O	1:A:310:GLU:HG3	2.20	0.41
1:A:268:GLU:CD	1:A:268:GLU:N	2.74	0.41
2:B:725:ILE:O	2:B:726:SER:C	2.57	0.41
2:B:731:VAL:CG2	2:B:736:ALA:HB2	2.51	0.41
1:A:87:ARG:HA	1:A:90:ILE:CD1	2.44	0.41
1:A:293:ILE:HG21	1:A:293:ILE:HD13	1.79	0.41
2:B:425:PHE:CD1	2:B:425:PHE:N	2.89	0.41
1:A:102:HIS:ND1	7:A:390:HOH:O	2.37	0.41
2:B:487:ARG:HA	2:B:490:ILE:HD13	2.02	0.41
2:B:583:LEU:HA	2:B:583:LEU:HD23	1.72	0.41
1:A:98:ILE:HD13	1:A:98:ILE:HG21	1.87	0.40
2:B:416:ARG:NH1	2:B:501:ILE:HG23	2.36	0.40
1:A:209:GLU:O	1:A:213:HIS:HB2	2.22	0.40
1:A:301:LEU:HD23	1:A:301:LEU:HA	1.92	0.40
3:A:360:NAD:H71N	3:A:360:NAD:H4N	1.48	0.40
1:A:130:ASN:HA	1:A:133:THR:O	2.21	0.40

There are no symmetry-related clashes.

## 5.3 Torsion angles [i](#)

### 5.3.1 Protein backbone [i](#)

In the following table, the Percentiles column shows the percent Ramachandran outliers of the chain as a percentile score with respect to all X-ray entries followed by that with respect to entries of similar resolution.

The Analysed column shows the number of residues for which the backbone conformation was analysed, and the total number of residues.

Mol	Chain	Analysed	Favoured	Allowed	Outliers	Percentiles
1	A	347/356 (98%)	328 (94%)	18 (5%)	1 (0%)	37 47
2	B	345/356 (97%)	331 (96%)	14 (4%)	0	100 100

Continued on next page...

*Continued from previous page...*

Mol	Chain	Analysed	Favoured	Allowed	Outliers	Percentiles
All	All	692/712 (97%)	659 (95%)	32 (5%)	1 (0%)	48 60

All (1) Ramachandran outliers are listed below:

Mol	Chain	Res	Type
1	A	184	GLY

### 5.3.2 Protein sidechains [i](#)

In the following table, the Percentiles column shows the percent sidechain outliers of the chain as a percentile score with respect to all X-ray entries followed by that with respect to entries of similar resolution.

The Analysed column shows the number of residues for which the sidechain conformation was analysed, and the total number of residues.

Mol	Chain	Analysed	Rotameric	Outliers	Percentiles
1	A	256/261 (98%)	220 (86%)	36 (14%)	3 3
2	B	255/261 (98%)	232 (91%)	23 (9%)	8 10
All	All	511/522 (98%)	452 (88%)	59 (12%)	4 5

All (59) residues with a non-rotameric sidechain are listed below:

Mol	Chain	Res	Type
1	A	2	ILE
1	A	3	ASP
1	A	4	SER
1	A	19	SER
1	A	47	SER
1	A	54	THR
1	A	55	ASP
1	A	58	LYS
1	A	79	SER
1	A	93	SER
1	A	110	SER
1	A	123	SER
1	A	134	GLU
1	A	139	ARG
1	A	142	GLU
1	A	143	ARG
1	A	165	VAL

*Continued on next page...*

*Continued from previous page...*

<b>Mol</b>	<b>Chain</b>	<b>Res</b>	<b>Type</b>
1	A	168	ARG
1	A	176	LEU
1	A	179	LEU
1	A	193	LEU
1	A	196	GLU
1	A	200	GLN
1	A	206	THR
1	A	208	THR
1	A	209	GLU
1	A	225	GLU
1	A	240	MET
1	A	246	THR
1	A	262	ASN
1	A	267	ASP
1	A	268	GLU
1	A	271	SER
1	A	277	ARG
1	A	304	SER
1	A	321	GLN
2	B	406	LEU
2	B	432	THR
2	B	445	GLN
2	B	491	ASP
2	B	493	SER
2	B	507	ASP
2	B	510	SER
2	B	548	SER
2	B	570	LEU
2	B	592	SER
2	B	625	GLU
2	B	629	SER
2	B	640	MET
2	B	643	VAL
2	B	647	GLU
2	B	667	ASP
2	B	671	SER
2	B	684	ASP
2	B	705	GLU
2	B	706	SER
2	B	726	SER
2	B	739	THR
2	B	746	ARG

Sometimes sidechains can be flipped to improve hydrogen bonding and reduce clashes. All (9) such sidechains are listed below:

Mol	Chain	Res	Type
1	A	45	GLN
1	A	71	ASN
1	A	181	GLN
1	A	213	HIS
1	A	294	HIS
1	A	309	HIS
1	A	328	ASN
2	B	581	GLN
2	B	720	ASN

### 5.3.3 RNA [i](#)

There are no RNA molecules in this entry.

## 5.4 Non-standard residues in protein, DNA, RNA chains [i](#)

There are no non-standard protein/DNA/RNA residues in this entry.

## 5.5 Carbohydrates [i](#)

There are no oligosaccharides in this entry.

## 5.6 Ligand geometry [i](#)

Of 6 ligands modelled in this entry, 1 is monoatomic - leaving 5 for Mogul analysis.

In the following table, the Counts columns list the number of bonds (or angles) for which Mogul statistics could be retrieved, the number of bonds (or angles) that are observed in the model and the number of bonds (or angles) that are defined in the Chemical Component Dictionary. The Link column lists molecule types, if any, to which the group is linked. The Z score for a bond length (or angle) is the number of standard deviations the observed value is removed from the expected value. A bond length (or angle) with  $|Z| > 2$  is considered an outlier worth inspection. RMSZ is the root-mean-square of all Z scores of the bond lengths (or angles).

Mol	Type	Chain	Res	Link	Bond lengths			Bond angles		
					Counts	RMSZ	$\# Z  > 2$	Counts	RMSZ	$\# Z  > 2$
3	NAD	B	760	-	42,48,48	2.34	10 (23%)	50,73,73	2.76	18 (36%)
6	PO4	B	900	5	4,4,4	2.71	4 (100%)	6,6,6	0.48	0

Mol	Type	Chain	Res	Link	Bond lengths			Bond angles		
					Counts	RMSZ	# Z  > 2	Counts	RMSZ	# Z  > 2
4	HCI	A	361	-	11,11,11	1.51	3 (27%)	13,13,13	1.85	2 (15%)
3	NAD	A	360	-	42,48,48	1.92	8 (19%)	50,73,73	1.78	14 (28%)
4	HCI	B	761	-	11,11,11	1.68	2 (18%)	13,13,13	1.25	1 (7%)

In the following table, the Chirals column lists the number of chiral outliers, the number of chiral centers analysed, the number of these observed in the model and the number defined in the Chemical Component Dictionary. Similar counts are reported in the Torsion and Rings columns. '-' means no outliers of that kind were identified.

Mol	Type	Chain	Res	Link	Chirals	Torsions	Rings
3	NAD	B	760	-	-	10/26/62/62	0/5/5/5
4	HCI	A	361	-	-	3/5/5/5	0/1/1/1
4	HCI	B	761	-	-	4/5/5/5	0/1/1/1
3	NAD	A	360	-	-	11/26/62/62	0/5/5/5

All (27) bond length outliers are listed below:

Mol	Chain	Res	Type	Atoms	Z	Observed(Å)	Ideal(Å)
3	B	760	NAD	PA-O3	-7.14	1.51	1.59
3	A	360	NAD	PN-O3	6.44	1.66	1.59
3	B	760	NAD	C3N-C7N	-5.95	1.41	1.50
3	B	760	NAD	C4N-C3N	5.12	1.47	1.39
3	A	360	NAD	C4N-C3N	4.77	1.46	1.39
3	B	760	NAD	C5N-C4N	4.40	1.46	1.38
3	B	760	NAD	C2N-C3N	4.33	1.45	1.39
4	B	761	HCI	O2-C1	-4.29	1.16	1.30
3	A	360	NAD	C2N-N1N	4.18	1.39	1.35
3	A	360	NAD	O4B-C1B	-4.10	1.35	1.40
3	B	760	NAD	O4B-C1B	-4.06	1.35	1.40
3	B	760	NAD	C2N-N1N	3.66	1.39	1.35
4	A	361	HCI	O2-C1	-3.37	1.19	1.30
3	A	360	NAD	C2N-C3N	3.31	1.44	1.39
3	A	360	NAD	C3N-C7N	-3.21	1.45	1.50
6	B	900	PO4	P-O4	-2.96	1.46	1.54
6	B	900	PO4	P-O3	-2.96	1.46	1.54
3	B	760	NAD	C1B-N9A	-2.92	1.42	1.49
3	A	360	NAD	C2A-N1A	2.75	1.38	1.33
3	B	760	NAD	C2A-N1A	2.73	1.38	1.33
4	B	761	HCI	O1-C1	2.73	1.31	1.22
6	B	900	PO4	P-O2	-2.59	1.47	1.54
4	A	361	HCI	C5'-C6'	-2.52	1.34	1.38

Continued on next page...

*Continued from previous page...*

Mol	Chain	Res	Type	Atoms	Z	Observed(Å)	Ideal(Å)
3	A	360	NAD	C5N-C4N	2.43	1.43	1.38
6	B	900	PO4	P-O1	-2.28	1.45	1.50
4	A	361	HCI	O1-C1	2.25	1.29	1.22
3	B	760	NAD	PN-O3	-2.24	1.57	1.59

All (35) bond angle outliers are listed below:

Mol	Chain	Res	Type	Atoms	Z	Observed(°)	Ideal(°)
3	B	760	NAD	C5N-C4N-C3N	-8.13	112.37	120.36
3	B	760	NAD	C3N-C7N-N7N	-6.27	110.01	117.74
3	B	760	NAD	C4D-O4D-C1D	-5.80	104.61	109.92
3	B	760	NAD	O2A-PA-O3	5.07	120.98	107.27
3	B	760	NAD	O7N-C7N-C3N	4.73	125.39	119.60
3	B	760	NAD	C6N-N1N-C2N	-4.72	117.86	121.88
3	B	760	NAD	C6N-C5N-C4N	4.63	126.12	119.45
3	B	760	NAD	C4B-O4B-C1B	-4.57	105.74	109.92
3	B	760	NAD	O3-PN-O1N	-4.52	97.10	110.70
4	A	361	HCI	O1-C1-C2	-4.51	108.79	123.09
3	A	360	NAD	C5N-C4N-C3N	-4.10	116.33	120.36
3	A	360	NAD	C3N-C7N-N7N	-3.81	113.05	117.74
3	A	360	NAD	C2N-C3N-C7N	3.79	130.41	119.46
4	A	361	HCI	O2-C1-C2	3.78	125.94	114.00
3	B	760	NAD	C5A-C6A-N6A	3.75	126.02	120.31
3	B	760	NAD	C2N-C3N-C7N	3.48	129.52	119.46
3	A	360	NAD	O2N-PN-O3	3.30	116.20	107.27
3	B	760	NAD	C4N-C3N-C7N	-3.21	112.31	121.06
3	A	360	NAD	C4N-C3N-C7N	-3.20	112.35	121.06
3	A	360	NAD	O3D-C3D-C4D	3.15	120.13	111.08
3	B	760	NAD	C2D-C3D-C4D	-2.98	96.85	102.61
3	A	360	NAD	C6N-C5N-C4N	2.91	123.65	119.45
3	A	360	NAD	O2D-C2D-C3D	-2.66	103.28	111.82
3	A	360	NAD	C5A-C6A-N6A	2.53	124.16	120.31
3	B	760	NAD	C4A-C5A-N7A	2.52	112.00	109.34
3	A	360	NAD	O7N-C7N-C3N	2.50	122.66	119.60
3	B	760	NAD	C5B-C4B-C3B	-2.42	106.50	115.21
3	B	760	NAD	C1B-N9A-C4A	-2.38	122.46	126.64
4	B	761	HCI	O1-C1-C2	-2.33	115.71	123.09
3	A	360	NAD	C4A-C5A-N7A	2.32	111.79	109.34
3	B	760	NAD	O3D-C3D-C4D	2.31	117.70	111.08
3	A	360	NAD	C4B-O4B-C1B	2.28	112.01	109.92
3	B	760	NAD	O5B-C5B-C4B	-2.22	101.44	108.99
3	A	360	NAD	O2A-PA-O3	2.10	112.95	107.27

*Continued on next page...*

*Continued from previous page...*

Mol	Chain	Res	Type	Atoms	Z	Observed(°)	Ideal(°)
3	A	360	NAD	C6N-N1N-C2N	-2.06	120.13	121.88

There are no chirality outliers.

All (28) torsion outliers are listed below:

Mol	Chain	Res	Type	Atoms
3	A	360	NAD	C5D-O5D-PN-O3
3	A	360	NAD	C5D-O5D-PN-O1N
3	A	360	NAD	C5D-O5D-PN-O2N
3	B	760	NAD	C5B-O5B-PA-O2A
3	B	760	NAD	C5B-O5B-PA-O3
3	B	760	NAD	C5D-O5D-PN-O1N
3	B	760	NAD	O4D-C4D-C5D-O5D
3	B	760	NAD	C3B-C4B-C5B-O5B
3	B	760	NAD	C3D-C4D-C5D-O5D
4	A	361	HCI	C1-C2-C3-C1'
3	A	360	NAD	O4D-C4D-C5D-O5D
3	A	360	NAD	C3D-C4D-C5D-O5D
3	B	760	NAD	O4B-C4B-C5B-O5B
3	A	360	NAD	O4B-C4B-C5B-O5B
3	A	360	NAD	C3B-C4B-C5B-O5B
4	B	761	HCI	C1-C2-C3-C1'
3	A	360	NAD	C5B-O5B-PA-O2A
3	A	360	NAD	C5B-O5B-PA-O3
3	B	760	NAD	C5D-O5D-PN-O3
3	B	760	NAD	C5D-O5D-PN-O2N
3	A	360	NAD	PA-O3-PN-O2N
4	B	761	HCI	C6'-C1'-C3-C2
4	A	361	HCI	C6'-C1'-C3-C2
4	B	761	HCI	C2'-C1'-C3-C2
3	A	360	NAD	PA-O3-PN-O1N
3	B	760	NAD	PN-O3-PA-O1A
4	B	761	HCI	O2-C1-C2-C3
4	A	361	HCI	C2'-C1'-C3-C2

There are no ring outliers.

3 monomers are involved in 10 short contacts:

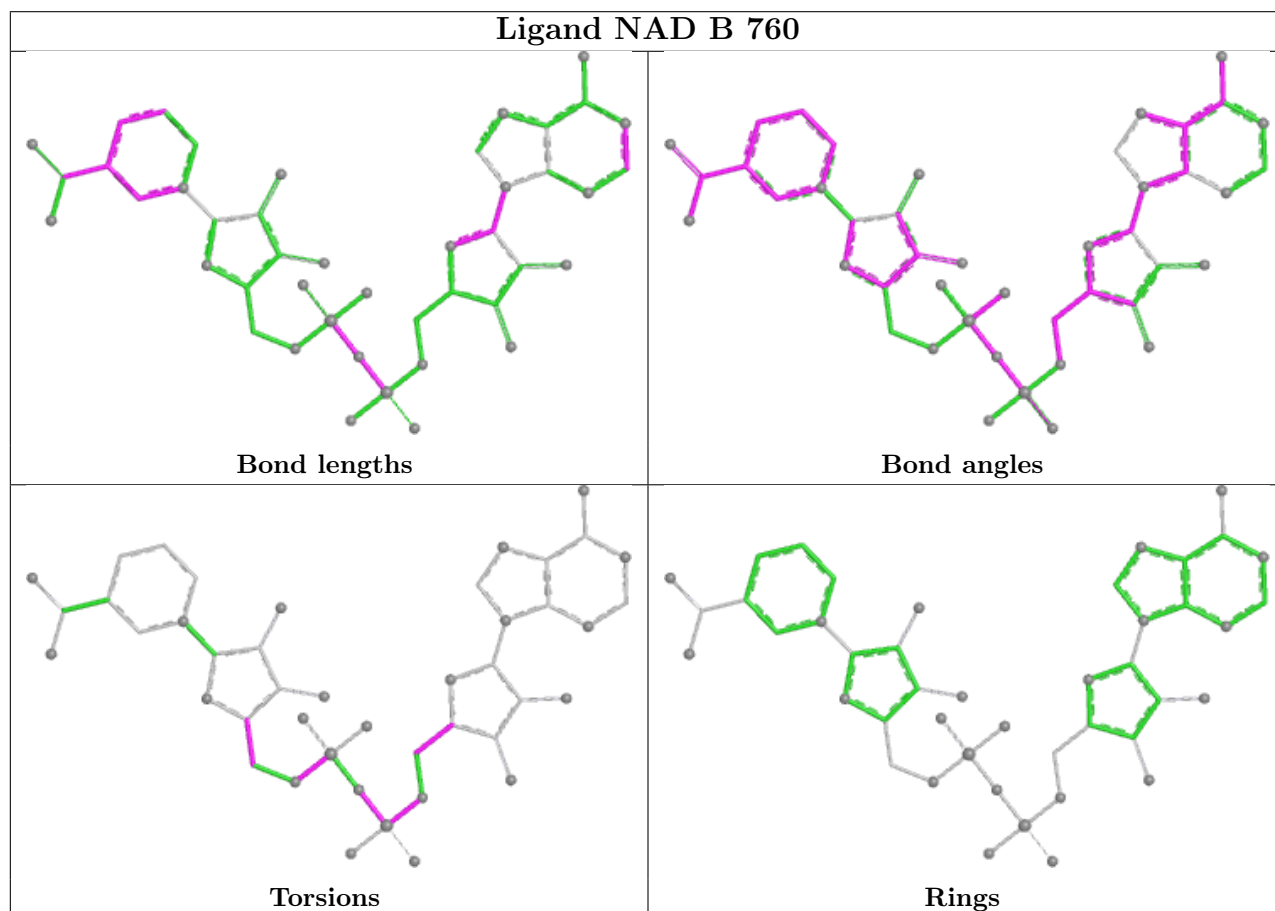
Mol	Chain	Res	Type	Clashes	Symm-Clashes
3	B	760	NAD	8	0
3	A	360	NAD	1	0

*Continued on next page...*

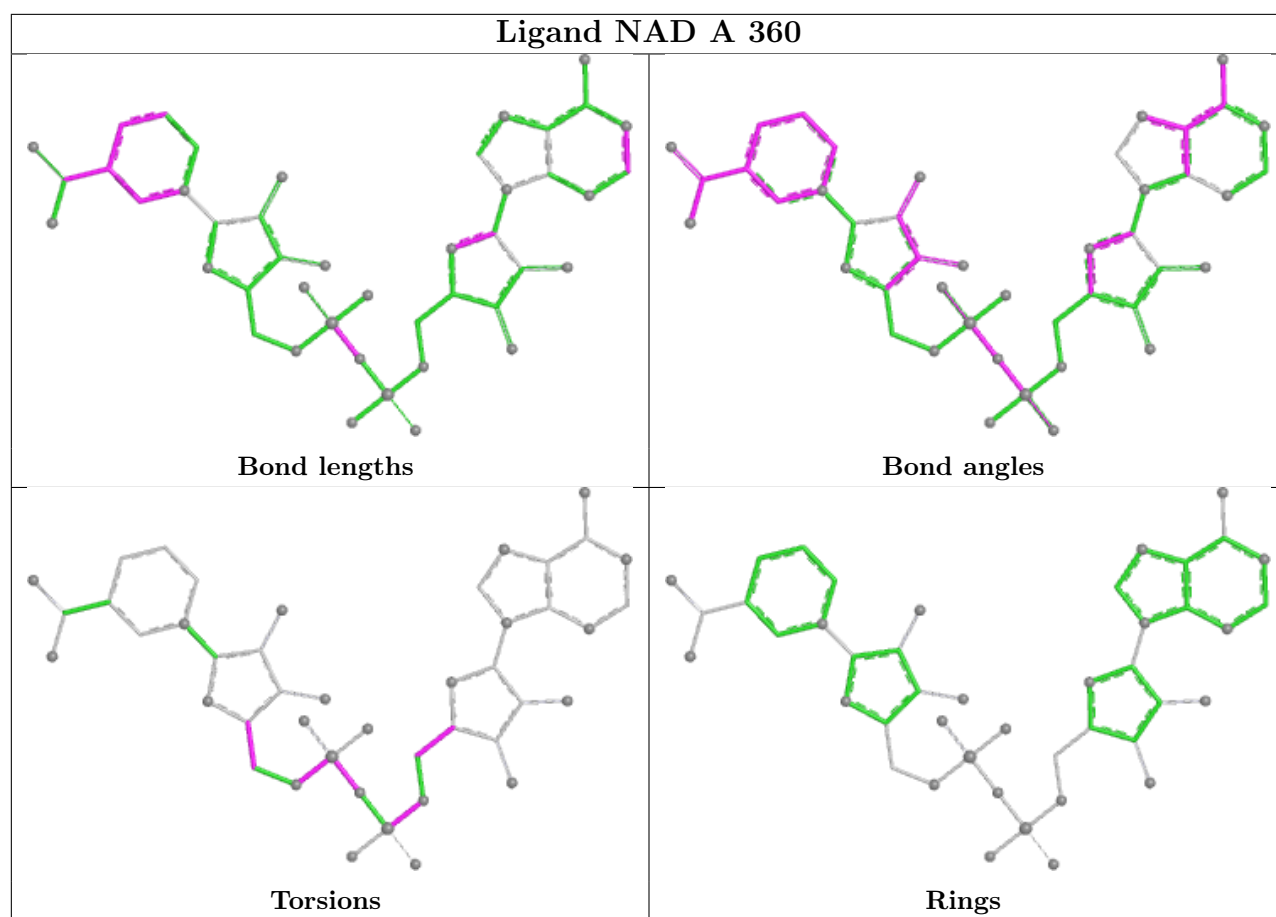
Continued from previous page...

Mol	Chain	Res	Type	Clashes	Symm-Clashes
4	B	761	HCI	1	0

The following is a two-dimensional graphical depiction of Mogul quality analysis of bond lengths, bond angles, torsion angles, and ring geometry for all instances of the Ligand of Interest. In addition, ligands with molecular weight > 250 and outliers as shown on the validation Tables will also be included. For torsion angles, if less than 5% of the Mogul distribution of torsion angles is within 10 degrees of the torsion angle in question, then that torsion angle is considered an outlier. Any bond that is central to one or more torsion angles identified as an outlier by Mogul will be highlighted in the graph. For rings, the root-mean-square deviation (RMSD) between the ring in question and similar rings identified by Mogul is calculated over all ring torsion angles. If the average RMSD is greater than 60 degrees and the minimal RMSD between the ring in question and any Mogul-identified rings is also greater than 60 degrees, then that ring is considered an outlier. The outliers are highlighted in purple. The color gray indicates Mogul did not find sufficient equivalents in the CSD to analyse the geometry.







## 5.7 Other polymers [i](#)

There are no such residues in this entry.

## 5.8 Polymer linkage issues [i](#)

There are no chain breaks in this entry.

## 6 Fit of model and data

### 6.1 Protein, DNA and RNA chains

EDS was not executed - this section is therefore empty.

### 6.2 Non-standard residues in protein, DNA, RNA chains

EDS was not executed - this section is therefore empty.

### 6.3 Carbohydrates

EDS was not executed - this section is therefore empty.

### 6.4 Ligands

EDS was not executed - this section is therefore empty.

### 6.5 Other polymers

EDS was not executed - this section is therefore empty.