



Full wwPDB X-ray Structure Validation Report ⓘ

May 15, 2020 – 03:10 pm BST

PDB ID : 1BXW
Title : OUTER MEMBRANE PROTEIN A (OMPA) TRANSMEMBRANE DOMAIN
Authors : Schulz, G.E.; Pautsch, A.
Deposited on : 1998-10-03
Resolution : 2.50 Å(reported)

This is a Full wwPDB X-ray Structure Validation Report for a publicly released PDB entry.

We welcome your comments at validation@mail.wwpdb.org

A user guide is available at

<https://www.wwpdb.org/validation/2017/XrayValidationReportHelp>

with specific help available everywhere you see the ⓘ symbol.

The following versions of software and data (see [references ⓘ](#)) were used in the production of this report:

MolProbity : 4.02b-467
Mogul : 1.8.5 (274361), CSD as541be (2020)
Xtriage (Phenix) : 1.13
EDS : 2.11
buster-report : 1.1.7 (2018)
Percentile statistics : 20191225.v01 (using entries in the PDB archive December 25th 2019)
Refmac : 5.8.0158
CCP4 : 7.0.044 (Gargrove)
Ideal geometry (proteins) : Engh & Huber (2001)
Ideal geometry (DNA, RNA) : Parkinson et al. (1996)
Validation Pipeline (wwPDB-VP) : 2.11

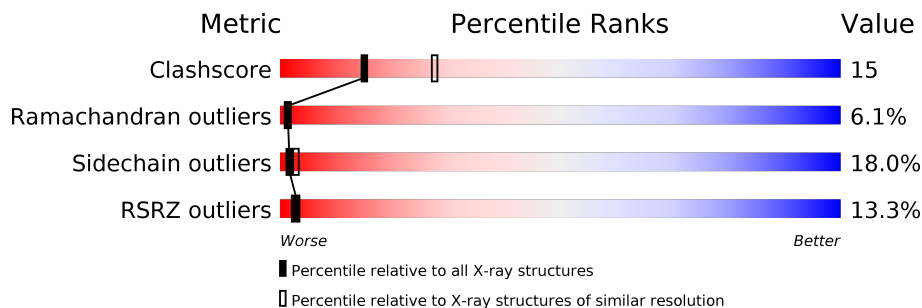
1 Overall quality at a glance

The following experimental techniques were used to determine the structure:

X-RAY DIFFRACTION

The reported resolution of this entry is 2.50 Å.

Percentile scores (ranging between 0-100) for global validation metrics of the entry are shown in the following graphic. The table shows the number of entries on which the scores are based.



Metric	Whole archive (#Entries)	Similar resolution (#Entries, resolution range(Å))
Clashscore	141614	5346 (2.50-2.50)
Ramachandran outliers	138981	5231 (2.50-2.50)
Sidechain outliers	138945	5233 (2.50-2.50)
RSRZ outliers	127900	4559 (2.50-2.50)

The table below summarises the geometric issues observed across the polymeric chains and their fit to the electron density. The red, orange, yellow and green segments on the lower bar indicate the fraction of residues that contain outliers for ≥ 3 , 2, 1 and 0 types of geometric quality criteria respectively. A grey segment represents the fraction of residues that are not modelled. The numeric value for each fraction is indicated below the corresponding segment, with a dot representing fractions $\leq 5\%$. The upper red bar (where present) indicates the fraction of residues that have poor fit to the electron density. The numeric value is given above the bar.

Mol	Chain	Length	Quality of chain
1	A	172	

The following table lists non-polymeric compounds, carbohydrate monomers and non-standard residues in protein, DNA, RNA chains that are outliers for geometric or electron-density-fit criteria:

Mol	Type	Chain	Res	Chirality	Geometry	Clashes	Electron density
2	C8E	A	172	-	-	-	X

2 Entry composition [i](#)

There are 3 unique types of molecules in this entry. The entry contains 1390 atoms, of which 0 are hydrogens and 0 are deuteriums.

In the tables below, the ZeroOcc column contains the number of atoms modelled with zero occupancy, the AltConf column contains the number of residues with at least one atom in alternate conformation and the Trace column contains the number of residues modelled with at most 2 atoms.

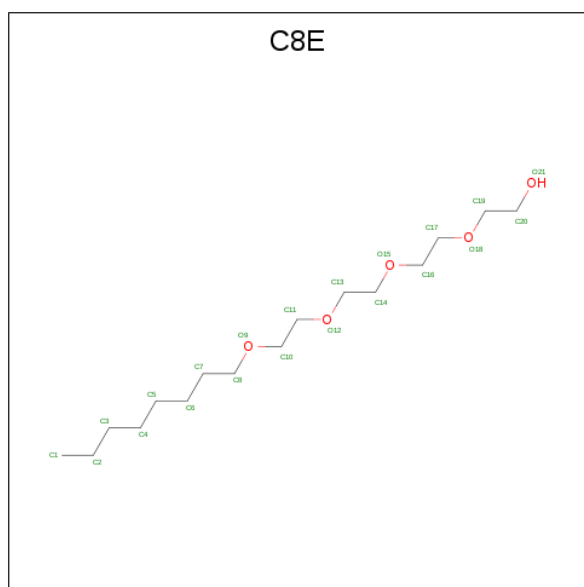
- Molecule 1 is a protein called PROTEIN (OUTER MEMBRANE PROTEIN A).

Mol	Chain	Residues	Atoms					ZeroOcc	AltConf	Trace
			Total	C	N	O	S			
1	A	172	1330	844	225	256	5	158	0	0

There are 4 discrepancies between the modelled and reference sequences:

Chain	Residue	Modelled	Actual	Comment	Reference
A	0	MET	ALA	SEE REMARK 999	UNP P0A910
A	23	LEU	PHE	ENGINEERED MUTATION	UNP P0A910
A	34	LYS	GLN	ENGINEERED MUTATION	UNP P0A910
A	107	TYR	LYS	ENGINEERED MUTATION	UNP P0A910

- Molecule 2 is (HYDROXYETHYLOXY)TRI(ETHYLOXY)OCTANE (three-letter code: C8E) (formula: $C_{16}H_{34}O_5$).



Mol	Chain	Residues	Atoms			ZeroOcc	AltConf
2	A	1	Total	C	O	0	0
			21	16	5		

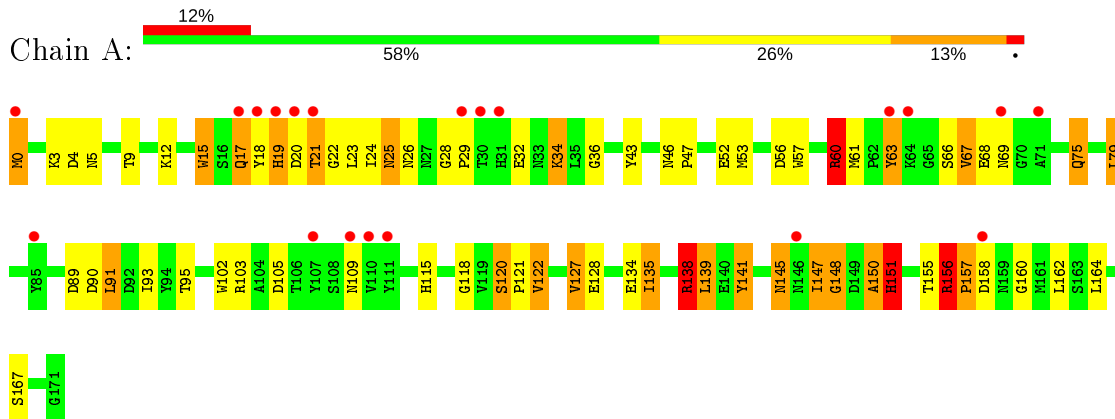
- Molecule 3 is water.

Mol	Chain	Residues	Atoms		ZeroOcc	AltConf
3	A	39	Total	O	0	0
			39	39		

3 Residue-property plots [i](#)

These plots are drawn for all protein, RNA and DNA chains in the entry. The first graphic for a chain summarises the proportions of the various outlier classes displayed in the second graphic. The second graphic shows the sequence view annotated by issues in geometry and electron density. Residues are color-coded according to the number of geometric quality criteria for which they contain at least one outlier: green = 0, yellow = 1, orange = 2 and red = 3 or more. A red dot above a residue indicates a poor fit to the electron density ($RSRZ > 2$). Stretches of 2 or more consecutive residues without any outlier are shown as a green connector. Residues present in the sample, but not in the model, are shown in grey.

- Molecule 1: PROTEIN (OUTER MEMBRANE PROTEIN A)



4 Data and refinement statistics

Property	Value	Source
Space group	C 1 2 1	Depositor
Cell constants a, b, c, α , β , γ	69.18Å 77.95Å 50.93Å 90.00° 91.52° 90.00°	Depositor
Resolution (Å)	50.00 – 2.50 23.25 – 2.50	Depositor EDS
% Data completeness (in resolution range)	89.0 (50.00-2.50) 88.4 (23.25-2.50)	Depositor EDS
R_{merge}	(Not available)	Depositor
R_{sym}	0.03	Depositor
$\langle I/\sigma(I) \rangle$ ¹	3.46 (at 2.50Å)	Xtrriage
Refinement program	REFMAC	Depositor
R, R_{free}	0.189 , 0.235 0.193 , (Not available)	Depositor DCC
R_{free} test set	No test flags present.	wwPDB-VP
Wilson B-factor (Å ²)	43.6	Xtrriage
Anisotropy	0.232	Xtrriage
Bulk solvent k_{sol} (e/Å ³), B_{sol} (Å ²)	0.29 , 71.5	EDS
L-test for twinning ²	$\langle L \rangle = 0.50$, $\langle L^2 \rangle = 0.34$	Xtrriage
Estimated twinning fraction	0.029 for -h,-k,l	Xtrriage
F_o, F_c correlation	0.94	EDS
Total number of atoms	1390	wwPDB-VP
Average B, all atoms (Å ²)	56.0	wwPDB-VP

Xtrriage's analysis on translational NCS is as follows: *The largest off-origin peak in the Patterson function is 10.93% of the height of the origin peak. No significant pseudotranslation is detected.*

¹Intensities estimated from amplitudes.

²Theoretical values of $\langle |L| \rangle$, $\langle L^2 \rangle$ for acentric reflections are 0.5, 0.333 respectively for untwinned datasets, and 0.375, 0.2 for perfectly twinned datasets.

5 Model quality i

5.1 Standard geometry i

Bond lengths and bond angles in the following residue types are not validated in this section: C8E

The Z score for a bond length (or angle) is the number of standard deviations the observed value is removed from the expected value. A bond length (or angle) with $|Z| > 5$ is considered an outlier worth inspection. RMSZ is the root-mean-square of all Z scores of the bond lengths (or angles).

Mol	Chain	Bond lengths		Bond angles	
		RMSZ	# Z >5	RMSZ	# Z >5
1	A	1.80	12/1365 (0.9%)	2.44	57/1852 (3.1%)

Chiral center outliers are detected by calculating the chiral volume of a chiral center and verifying if the center is modelled as a planar moiety or with the opposite hand. A planarity outlier is detected by checking planarity of atoms in a peptide group, atoms in a mainchain group or atoms of a sidechain that are expected to be planar.

Mol	Chain	#Chirality outliers	#Planarity outliers
1	A	0	2

All (12) bond length outliers are listed below:

Mol	Chain	Res	Type	Atoms	Z	Observed(Å)	Ideal(Å)
1	A	21	THR	C-N	37.32	2.00	1.33
1	A	157	PRO	N-CD	-26.26	1.11	1.47
1	A	157	PRO	C-N	22.02	1.84	1.34
1	A	157	PRO	N-CA	-14.78	1.22	1.47
1	A	157	PRO	CA-C	-8.21	1.36	1.52
1	A	156	ARG	CA-C	7.94	1.73	1.52
1	A	28	GLY	C-N	6.59	1.46	1.34
1	A	148	GLY	N-CA	6.00	1.55	1.46
1	A	23	LEU	N-CA	5.75	1.57	1.46
1	A	24	ILE	N-CA	5.72	1.57	1.46
1	A	156	ARG	NE-CZ	5.45	1.40	1.33
1	A	157	PRO	C-O	5.44	1.34	1.23

All (57) bond angle outliers are listed below:

Mol	Chain	Res	Type	Atoms	Z	Observed(°)	Ideal(°)
1	A	21	THR	O-C-N	-34.57	64.44	123.20

Continued on next page...

Continued from previous page...

Mol	Chain	Res	Type	Atoms	Z	Observed(°)	Ideal(°)
1	A	151	HIS	O-C-N	27.15	166.14	122.70
1	A	157	PRO	N-CD-CG	-22.63	69.25	103.20
1	A	157	PRO	N-CA-CB	-21.75	77.20	103.30
1	A	157	PRO	O-C-N	20.00	154.71	122.70
1	A	151	HIS	CB-CA-C	-19.09	72.21	110.40
1	A	157	PRO	CA-N-CD	-18.39	85.76	111.50
1	A	151	HIS	CA-C-N	-17.37	78.99	117.20
1	A	21	THR	CA-C-N	-12.93	90.33	116.20
1	A	151	HIS	C-N-CA	11.98	151.66	121.70
1	A	150	ALA	O-C-N	10.99	140.29	122.70
1	A	25	ASN	O-C-N	9.23	137.47	122.70
1	A	155	THR	O-C-N	-9.09	108.15	122.70
1	A	156	ARG	N-CA-CB	-8.82	94.73	110.60
1	A	4	ASP	CA-C-N	8.33	135.53	117.20
1	A	135	ILE	CA-CB-CG2	7.79	126.48	110.90
1	A	138	ARG	CD-NE-CZ	7.63	134.28	123.60
1	A	156	ARG	NE-CZ-NH2	7.42	124.01	120.30
1	A	150	ALA	CA-C-N	-7.38	100.97	117.20
1	A	157	PRO	N-CA-C	7.33	131.16	112.10
1	A	60	ARG	NE-CZ-NH1	7.32	123.96	120.30
1	A	157	PRO	CA-C-N	-7.30	101.13	117.20
1	A	157	PRO	CA-C-O	-7.18	102.98	120.20
1	A	22	GLY	O-C-N	7.07	134.00	122.70
1	A	60	ARG	CD-NE-CZ	6.98	133.37	123.60
1	A	138	ARG	CA-CB-CG	6.73	128.20	113.40
1	A	138	ARG	NE-CZ-NH2	-6.63	116.98	120.30
1	A	60	ARG	NE-CZ-NH2	-6.63	116.99	120.30
1	A	24	ILE	C-N-CA	-6.58	105.24	121.70
1	A	157	PRO	CB-CG-CD	-6.58	80.83	106.50
1	A	155	THR	C-N-CA	-6.55	105.33	121.70
1	A	75	GLN	CB-CA-C	6.54	123.49	110.40
1	A	67	VAL	C-N-CA	-6.54	105.36	121.70
1	A	25	ASN	CA-C-N	-6.47	102.96	117.20
1	A	122	VAL	CB-CA-C	-6.40	99.24	111.40
1	A	90	ASP	CB-CG-OD1	6.36	124.02	118.30
1	A	156	ARG	CB-CA-C	6.20	122.80	110.40
1	A	120	SER	N-CA-CB	-6.13	101.30	110.50
1	A	28	GLY	O-C-N	-6.11	109.49	121.10
1	A	156	ARG	NH1-CZ-NH2	-6.00	112.80	119.40
1	A	141	TYR	CB-CG-CD1	-5.96	117.43	121.00
1	A	147	ILE	O-C-N	-5.92	113.14	123.20
1	A	151	HIS	N-CA-CB	5.90	121.23	110.60

Continued on next page...

Continued from previous page...

Mol	Chain	Res	Type	Atoms	Z	Observed(°)	Ideal(°)
1	A	68	GLU	N-CA-C	5.82	126.70	111.00
1	A	20	ASP	C-N-CA	5.78	136.16	121.70
1	A	156	ARG	NE-CZ-NH1	5.78	123.19	120.30
1	A	155	THR	CA-C-N	5.74	129.82	117.20
1	A	156	ARG	N-CA-C	5.74	126.49	111.00
1	A	21	THR	N-CA-CB	5.72	121.18	110.30
1	A	150	ALA	C-N-CA	5.67	135.87	121.70
1	A	151	HIS	CA-CB-CG	5.64	123.18	113.60
1	A	63	TYR	CA-CB-CG	-5.56	102.83	113.40
1	A	22	GLY	C-N-CA	5.51	135.47	121.70
1	A	4	ASP	O-C-N	-5.25	114.29	122.70
1	A	95	THR	N-CA-CB	5.18	120.14	110.30
1	A	157	PRO	CA-CB-CG	-5.15	94.21	104.00
1	A	15	TRP	N-CA-CB	5.10	119.77	110.60

There are no chirality outliers.

All (2) planarity outliers are listed below:

Mol	Chain	Res	Type	Group
1	A	156	ARG	Mainchain,Peptide

5.2 Too-close contacts

In the following table, the Non-H and H(model) columns list the number of non-hydrogen atoms and hydrogen atoms in the chain respectively. The H(added) column lists the number of hydrogen atoms added and optimized by MolProbity. The Clashes column lists the number of clashes within the asymmetric unit, whereas Symm-Clashes lists symmetry related clashes.

Mol	Chain	Non-H	H(model)	H(added)	Clashes	Symm-Clashes
1	A	1330	0	1240	35	6
2	A	21	0	34	2	0
3	A	39	0	0	5	0
All	All	1390	0	1274	35	6

The all-atom clashscore is defined as the number of clashes found per 1000 atoms (including hydrogen atoms). The all-atom clashscore for this structure is 15.

All (35) close contacts within the same asymmetric unit are listed below, sorted by their clash magnitude.

Atom-1	Atom-2	Interatomic distance (Å)	Clash overlap (Å)
1:A:0:MET:HB2	1:A:89:ASP:O	1.69	0.91
1:A:19:HIS:H	1:A:34:LYS:HE3	1.57	0.69
1:A:17:GLN:HA	1:A:17:GLN:HE21	1.59	0.67
1:A:19:HIS:HB2	1:A:34:LYS:HE3	1.77	0.66
1:A:46:ASN:HB2	1:A:47:PRO:HD2	1.79	0.65
1:A:32:GLU:OE2	1:A:34:LYS:HE2	1.96	0.65
1:A:3:LYS:HD2	3:A:181:HOH:O	1.99	0.63
1:A:15:TRP:HB2	3:A:199:HOH:O	2.02	0.57
1:A:139:LEU:HD23	1:A:164:LEU:HD23	1.87	0.56
1:A:79:LEU:HD13	2:A:172:C8E:H22	1.89	0.55
1:A:12:LYS:HE3	3:A:207:HOH:O	2.07	0.55
1:A:43:TYR:CE2	2:A:172:C8E:H111	2.44	0.53
1:A:12:LYS:HG3	3:A:207:HOH:O	2.10	0.52
1:A:19:HIS:N	1:A:34:LYS:HE3	2.23	0.52
1:A:103:ARG:NH2	1:A:105:ASP:OD1	2.44	0.50
1:A:0:MET:CB	1:A:89:ASP:O	2.53	0.49
1:A:9:THR:O	1:A:167:SER:HB2	2.13	0.48
1:A:17:GLN:HA	1:A:17:GLN:NE2	2.27	0.48
1:A:19:HIS:HB3	3:A:191:HOH:O	2.15	0.46
1:A:19:HIS:CB	1:A:34:LYS:HE3	2.45	0.45
1:A:17:GLN:O	1:A:17:GLN:HG3	2.18	0.43
1:A:36:GLY:HA3	1:A:57:TRP:O	2.19	0.43
1:A:162:LEU:HA	1:A:162:LEU:HD23	1.86	0.43
1:A:93:ILE:HG22	1:A:127:VAL:CG2	2.49	0.42
1:A:141:TYR:CZ	1:A:160:GLY:HA3	2.54	0.42
1:A:17:GLN:CA	1:A:17:GLN:HE21	2.25	0.42
1:A:141:TYR:OH	1:A:160:GLY:HA3	2.20	0.41
1:A:19:HIS:HB2	1:A:34:LYS:CE	2.48	0.41
1:A:12:LYS:HE2	1:A:56:ASP:OD1	2.21	0.41
1:A:145:ASN:HD22	1:A:145:ASN:C	2.23	0.41
1:A:60:ARG:HH11	1:A:60:ARG:HG2	1.86	0.41
1:A:102:TRP:CE2	1:A:118:GLY:HA3	2.56	0.41
1:A:120:SER:HA	1:A:121:PRO:HD3	1.89	0.41
1:A:91:LEU:HD21	1:A:127:VAL:HG13	2.03	0.40
1:A:128:GLU:OE2	1:A:138:ARG:HD2	2.21	0.40

All (6) symmetry-related close contacts are listed below. The label for Atom-2 includes the symmetry operator and encoded unit-cell translations to be applied.

Atom-1	Atom-2	Interatomic distance (Å)	Clash overlap (Å)
1:A:26:ASN:OD1	1:A:29:PRO:CA[2_556]	1.44	0.76

Continued on next page...

Continued from previous page...

Atom-1	Atom-2	Interatomic distance (Å)	Clash overlap (Å)
1:A:26:ASN:OD1	1:A:29:PRO:C[2_556]	1.68	0.52
1:A:26:ASN:OD1	1:A:29:PRO:N[2_556]	1.72	0.48
1:A:5:ASN:OD1	1:A:147:ILE:CD1[2_657]	2.03	0.17
1:A:26:ASN:OD1	1:A:29:PRO:O[2_556]	2.08	0.12
1:A:26:ASN:CG	1:A:29:PRO:N[2_556]	2.11	0.09

5.3 Torsion angles [i](#)

5.3.1 Protein backbone [i](#)

In the following table, the Percentiles column shows the percent Ramachandran outliers of the chain as a percentile score with respect to all X-ray entries followed by that with respect to entries of similar resolution.

The Analysed column shows the number of residues for which the backbone conformation was analysed, and the total number of residues.

Mol	Chain	Analysed	Favoured	Allowed	Outliers	Percentiles
1	A	164/172 (95%)	140 (85%)	14 (8%)	10 (6%)	1 1

All (10) Ramachandran outliers are listed below:

Mol	Chain	Res	Type
1	A	21	THR
1	A	25	ASN
1	A	66	SER
1	A	157	PRO
1	A	18	TYR
1	A	67	VAL
1	A	150	ALA
1	A	151	HIS
1	A	156	ARG
1	A	148	GLY

5.3.2 Protein sidechains [i](#)

In the following table, the Percentiles column shows the percent sidechain outliers of the chain as a percentile score with respect to all X-ray entries followed by that with respect to entries of similar resolution.

The Analysed column shows the number of residues for which the sidechain conformation was

analysed, and the total number of residues.

Mol	Chain	Analysed	Rotameric	Outliers	Percentiles
1	A	133/134 (99%)	109 (82%)	24 (18%)	1 3

All (24) residues with a non-rotameric sidechain are listed below:

Mol	Chain	Res	Type
1	A	0	MET
1	A	17	GLN
1	A	19	HIS
1	A	34	LYS
1	A	52	GLU
1	A	53	MET
1	A	60	ARG
1	A	61	MET
1	A	63	TYR
1	A	69	ASN
1	A	75	GLN
1	A	79	LEU
1	A	91	LEU
1	A	109	ASN
1	A	115	HIS
1	A	122	VAL
1	A	127	VAL
1	A	134	GLU
1	A	135	ILE
1	A	138	ARG
1	A	139	LEU
1	A	145	ASN
1	A	151	HIS
1	A	158	ASP

Some sidechains can be flipped to improve hydrogen bonding and reduce clashes. All (3) such sidechains are listed below:

Mol	Chain	Res	Type
1	A	17	GLN
1	A	75	GLN
1	A	146	ASN

5.3.3 RNA [i](#)

There are no RNA molecules in this entry.

5.4 Non-standard residues in protein, DNA, RNA chains [i](#)

There are no non-standard protein/DNA/RNA residues in this entry.

5.5 Carbohydrates [i](#)

There are no carbohydrates in this entry.

5.6 Ligand geometry [i](#)

1 ligand is modelled in this entry.

In the following table, the Counts columns list the number of bonds (or angles) for which Mogul statistics could be retrieved, the number of bonds (or angles) that are observed in the model and the number of bonds (or angles) that are defined in the Chemical Component Dictionary. The Link column lists molecule types, if any, to which the group is linked. The Z score for a bond length (or angle) is the number of standard deviations the observed value is removed from the expected value. A bond length (or angle) with $|Z| > 2$ is considered an outlier worth inspection. RMSZ is the root-mean-square of all Z scores of the bond lengths (or angles).

Mol	Type	Chain	Res	Link	Bond lengths			Bond angles		
					Counts	RMSZ	# Z > 2	Counts	RMSZ	# Z > 2
2	C8E	A	172	1	20,20,20	0.85	0	19,19,19	2.26	6 (31%)

In the following table, the Chirals column lists the number of chiral outliers, the number of chiral centers analysed, the number of these observed in the model and the number defined in the Chemical Component Dictionary. Similar counts are reported in the Torsion and Rings columns. '-' means no outliers of that kind were identified.

Mol	Type	Chain	Res	Link	Chirals	Torsions	Rings
2	C8E	A	172	1	-	11/18/18/18	-

There are no bond length outliers.

All (6) bond angle outliers are listed below:

Mol	Chain	Res	Type	Atoms	Z	Observed(°)	Ideal(°)
2	A	172	C8E	O12-C13-C14	4.91	132.55	110.39
2	A	172	C8E	O15-C14-C13	4.66	131.40	110.39
2	A	172	C8E	O18-C17-C16	3.99	128.37	110.39
2	A	172	C8E	O18-C19-C20	2.68	121.84	110.07
2	A	172	C8E	C7-C6-C5	-2.67	100.89	114.42
2	A	172	C8E	O9-C8-C7	2.65	124.20	110.26

There are no chirality outliers.

All (11) torsion outliers are listed below:

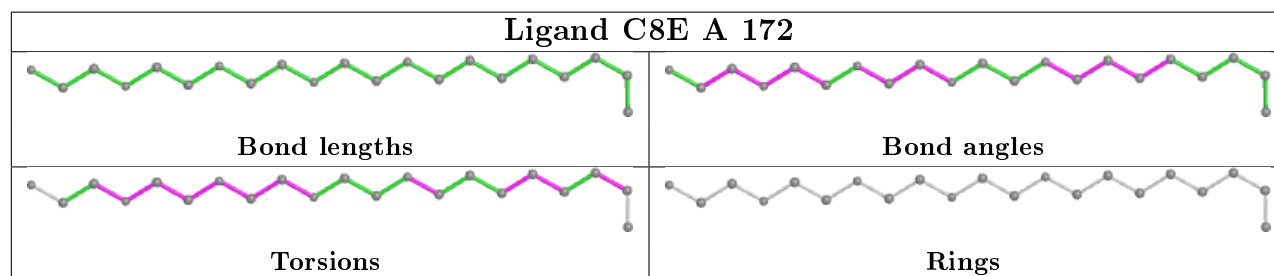
Mol	Chain	Res	Type	Atoms
2	A	172	C8E	O12-C13-C14-O15
2	A	172	C8E	C3-C4-C5-C6
2	A	172	C8E	C1-C2-C3-C4
2	A	172	C8E	C13-C14-O15-C16
2	A	172	C8E	C14-C13-O12-C11
2	A	172	C8E	C17-C16-O15-C14
2	A	172	C8E	C4-C5-C6-C7
2	A	172	C8E	C20-C19-O18-C17
2	A	172	C8E	C7-C8-O9-C10
2	A	172	C8E	O15-C16-C17-O18
2	A	172	C8E	C16-C17-O18-C19

There are no ring outliers.

1 monomer is involved in 2 short contacts:

Mol	Chain	Res	Type	Clashes	Symm-Clashes
2	A	172	C8E	2	0

The following is a two-dimensional graphical depiction of Mogul quality analysis of bond lengths, bond angles, torsion angles, and ring geometry for all instances of the Ligand of Interest. In addition, ligands with molecular weight > 250 and outliers as shown on the validation Tables will also be included. For torsion angles, if less than 5% of the Mogul distribution of torsion angles is within 10 degrees of the torsion angle in question, then that torsion angle is considered an outlier. Any bond that is central to one or more torsion angles identified as an outlier by Mogul will be highlighted in the graph. For rings, the root-mean-square deviation (RMSD) between the ring in question and similar rings identified by Mogul is calculated over all ring torsion angles. If the average RMSD is greater than 60 degrees and the minimal RMSD between the ring in question and any Mogul-identified rings is also greater than 60 degrees, then that ring is considered an outlier. The outliers are highlighted in purple. The color gray indicates Mogul did not find sufficient equivalents in the CSD to analyse the geometry.



5.7 Other polymers [i](#)

There are no such residues in this entry.

5.8 Polymer linkage issues [i](#)

The following chains have linkage breaks:

Mol	Chain	Number of breaks
1	A	5

All chain breaks are listed below:

Model	Chain	Residue-1	Atom-1	Residue-2	Atom-2	Distance (Å)
1	A	68:GLU	C	69:ASN	N	3.19
1	A	64:LYS	C	65:GLY	N	3.14
1	A	146:ASN	C	147:ILE	N	2.10
1	A	21:THR	C	22:GLY	N	2.00
1	A	157:PRO	C	158:ASP	N	1.84

6 Fit of model and data [i](#)

6.1 Protein, DNA and RNA chains [i](#)

In the following table, the column labelled '#RSRZ> 2' contains the number (and percentage) of RSRZ outliers, followed by percent RSRZ outliers for the chain as percentile scores relative to all X-ray entries and entries of similar resolution. The OWAB column contains the minimum, median, 95th percentile and maximum values of the occupancy-weighted average B-factor per residue. The column labelled 'Q< 0.9' lists the number of (and percentage) of residues with an average occupancy less than 0.9.

Mol	Chain	Analysed	<RSRZ>	#RSRZ>2	OWAB(Å ²)	Q<0.9
1	A	150/172 (87%)	0.63	20 (13%) 3 2	24, 45, 137, 191	4 (2%)

All (20) RSRZ outliers are listed below:

Mol	Chain	Res	Type	RSRZ
1	A	18	TYR	16.6
1	A	21	THR	12.5
1	A	29	PRO	12.2
1	A	63	TYR	8.9
1	A	30	THR	7.5
1	A	19	HIS	7.4
1	A	158	ASP	7.3
1	A	20	ASP	6.4
1	A	64	LYS	5.3
1	A	69	ASN	4.9
1	A	31	HIS	4.7
1	A	146	ASN	4.6
1	A	0	MET	3.6
1	A	109	ASN	3.5
1	A	111	TYR	3.1
1	A	107	TYR	2.9
1	A	17	GLN	2.6
1	A	71	ALA	2.5
1	A	85	TYR	2.3
1	A	110	VAL	2.0

6.2 Non-standard residues in protein, DNA, RNA chains [i](#)

There are no non-standard protein/DNA/RNA residues in this entry.

6.3 Carbohydrates [i](#)

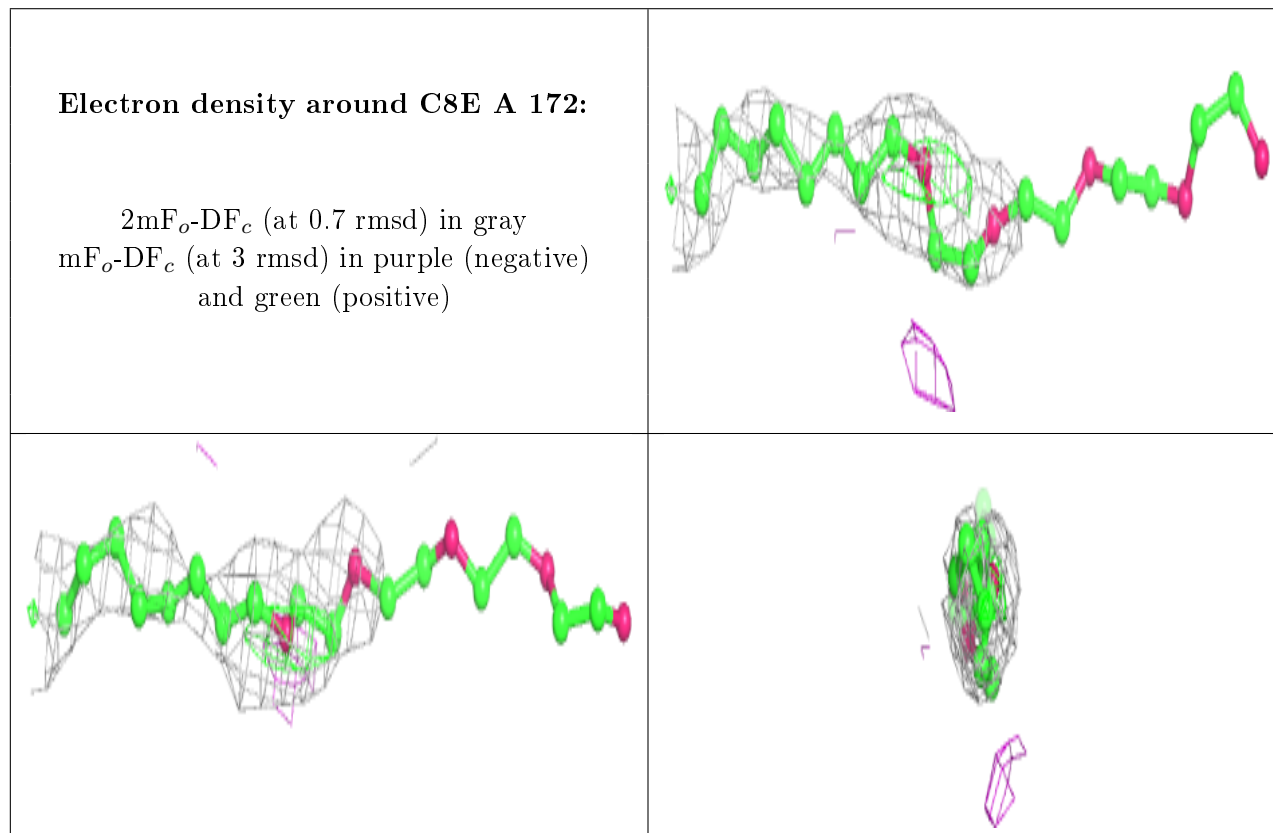
There are no carbohydrates in this entry.

6.4 Ligands [i](#)

In the following table, the Atoms column lists the number of modelled atoms in the group and the number defined in the chemical component dictionary. The B-factors column lists the minimum, median, 95th percentile and maximum values of B factors of atoms in the group. The column labelled 'Q< 0.9' lists the number of atoms with occupancy less than 0.9.

Mol	Type	Chain	Res	Atoms	RSCC	RSR	B-factors(Å ²)	Q<0.9
2	C8E	A	172	21/21	0.14	0.98	36,89,124,126	21

The following is a graphical depiction of the model fit to experimental electron density of all instances of the Ligand of Interest. In addition, ligands with molecular weight > 250 and outliers as shown on the geometry validation Tables will also be included. Each fit is shown from different orientation to approximate a three-dimensional view.



6.5 Other polymers [i](#)

There are no such residues in this entry.