



Full wwPDB X-ray Structure Validation Report ⓘ

Apr 21, 2018 – 11:45 AM EDT

PDB ID : 6C2Y
Title : Human GRK2 in complex with Gbetagamma subunits and CCG257142
Authors : Bouley, R.; Tesmer, J.J.G.
Deposited on : 2018-01-09
Resolution : 2.74 Å(reported)

This is a Full wwPDB X-ray Structure Validation Report for a publicly released PDB entry.

We welcome your comments at validation@mail.wwpdb.org

A user guide is available at

<https://www.wwpdb.org/validation/2017/XrayValidationReportHelp>

with specific help available everywhere you see the ⓘ symbol.

The following versions of software and data (see [references ⓘ](#)) were used in the production of this report:

MolProbity : 4.02b-467
Mogul : 1.7.3 (157068), CSD as539be (2018)
Xtriage (Phenix) : 1.13
EDS : rb-20031021
Percentile statistics : 20171227.v01 (using entries in the PDB archive December 27th 2017)
Refmac : 5.8.0158
CCP4 : 7.0 (Gargrove)
Ideal geometry (proteins) : Engh & Huber (2001)
Ideal geometry (DNA, RNA) : Parkinson et al. (1996)
Validation Pipeline (wwPDB-VP) : rb-20031021

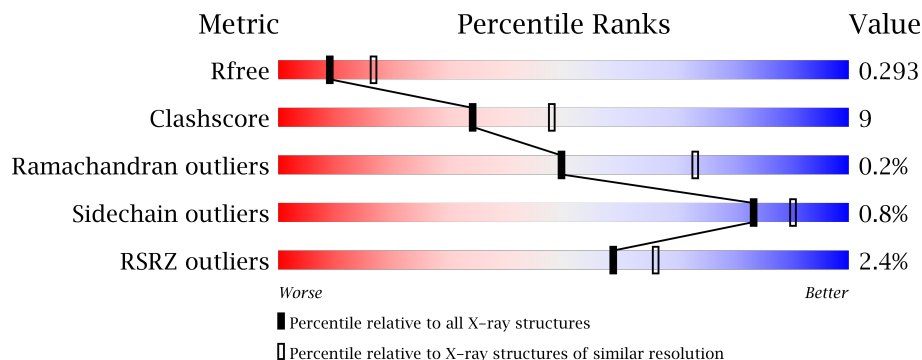
1 Overall quality at a glance

The following experimental techniques were used to determine the structure:

X-RAY DIFFRACTION

The reported resolution of this entry is 2.74 Å.

Percentile scores (ranging between 0-100) for global validation metrics of the entry are shown in the following graphic. The table shows the number of entries on which the scores are based.



Metric	Whole archive (#Entries)	Similar resolution (#Entries, resolution range(Å))
R_{free}	111664	1033 (2.76-2.72)
Clashscore	122126	1084 (2.76-2.72)
Ramachandran outliers	120053	1064 (2.76-2.72)
Sidechain outliers	120020	1065 (2.76-2.72)
RSRZ outliers	108989	1008 (2.76-2.72)

The table below summarises the geometric issues observed across the polymeric chains and their fit to the electron density. The red, orange, yellow and green segments on the lower bar indicate the fraction of residues that contain outliers for ≥ 3 , 2, 1 and 0 types of geometric quality criteria. A grey segment represents the fraction of residues that are not modelled. The numeric value for each fraction is indicated below the corresponding segment, with a dot representing fractions $\leq 5\%$. The upper red bar (where present) indicates the fraction of residues that have poor fit to the electron density. The numeric value is given above the bar.

Mol	Chain	Length	Quality of chain
1	A	689	
2	B	340	
3	G	77	

2 Entry composition [i](#)

There are 5 unique types of molecules in this entry. The entry contains 8159 atoms, of which 0 are hydrogens and 0 are deuteriums.

In the tables below, the ZeroOcc column contains the number of atoms modelled with zero occupancy, the AltConf column contains the number of residues with at least one atom in alternate conformation and the Trace column contains the number of residues modelled with at most 2 atoms.

- Molecule 1 is a protein called Beta-adrenergic receptor kinase 1.

Mol	Chain	Residues	Atoms					ZeroOcc	AltConf	Trace
			Total	C	N	O	S			
1	A	617	5060	3228	885	913	34	0	0	0

There is a discrepancy between the modelled and reference sequences:

Chain	Residue	Modelled	Actual	Comment	Reference
A	670	ALA	SER	engineered mutation	UNP P25098

- Molecule 2 is a protein called Guanine nucleotide-binding protein G(I)/G(S)/G(T) subunit beta-1.

Mol	Chain	Residues	Atoms					ZeroOcc	AltConf	Trace
			Total	C	N	O	S			
2	B	336	2580	1592	462	505	21	0	0	0

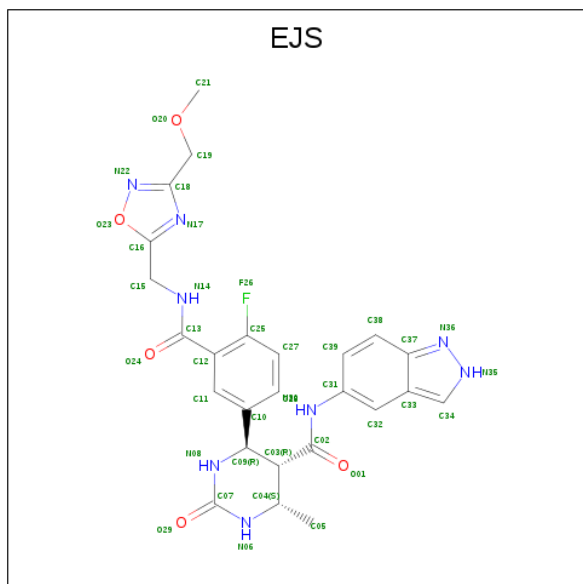
- Molecule 3 is a protein called Guanine nucleotide-binding protein G(I)/G(S)/G(O) subunit gamma-2.

Mol	Chain	Residues	Atoms					ZeroOcc	AltConf	Trace
			Total	C	N	O	S			
3	G	57	438	274	77	84	3	0	0	0

There are 7 discrepancies between the modelled and reference sequences:

Chain	Residue	Modelled	Actual	Comment	Reference
G	-5	HIS	-	expression tag	UNP P63212
G	-4	HIS	-	expression tag	UNP P63212
G	-3	HIS	-	expression tag	UNP P63212
G	-2	HIS	-	expression tag	UNP P63212
G	-1	HIS	-	expression tag	UNP P63212
G	0	HIS	-	expression tag	UNP P63212
G	68	SER	CYS	engineered mutation	UNP P63212

- Molecule 4 is (4R,5R,6S)-4-[4-fluoro-3-({[3-(methoxymethyl)-1,2,4-oxadiazol-5-yl]methyl}carbamoyl)phenyl]-N-(2H-indazol-5-yl)-6-methyl-2-oxohexahydropyrimidine-5-carboxamide (three-letter code: EJS) (formula: C₂₅H₂₅FN₈O₅).



Mol	Chain	Residues	Atoms					ZeroOcc	AltConf
			Total	C	F	N	O		
4	A	1	39	25	1	8	5	0	0

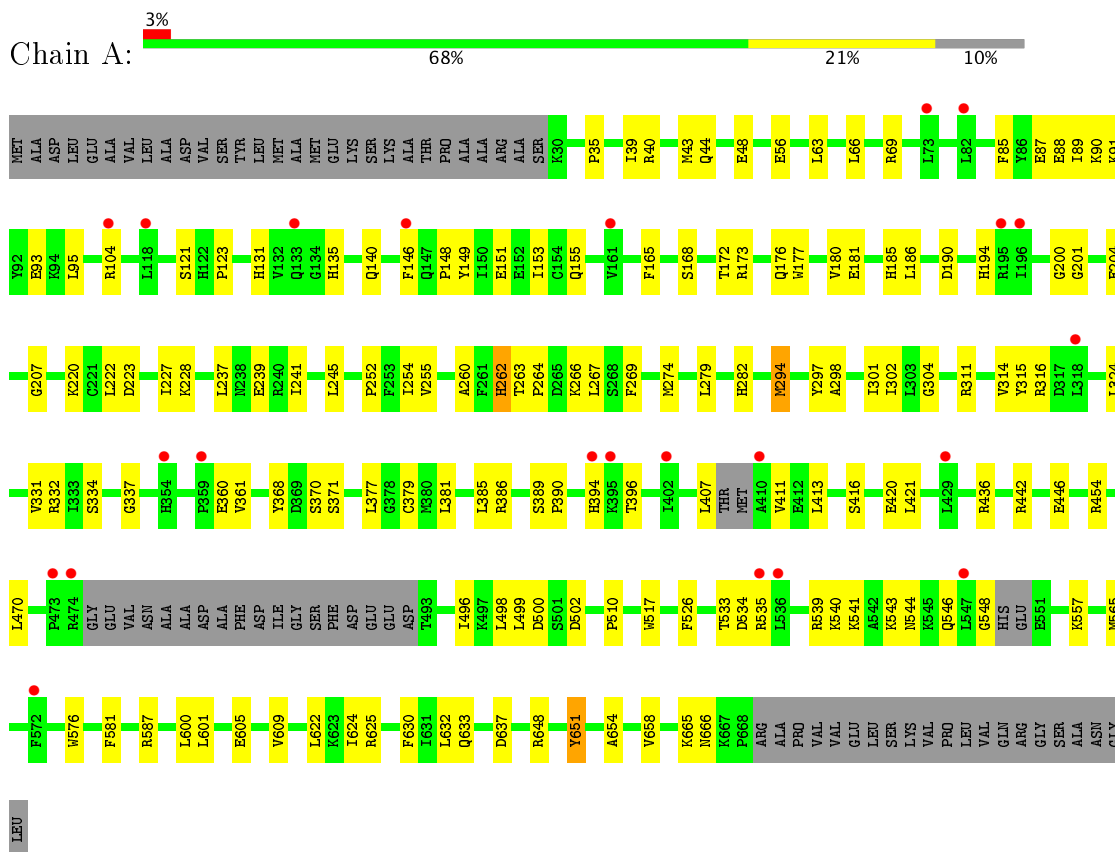
- Molecule 5 is water.

Mol	Chain	Residues	Atoms		ZeroOcc	AltConf
5	A	24	Total	O	0	0
			24	24		
5	B	17	Total	O	0	0
			17	17		
5	G	1	Total	O	0	0
			1	1		

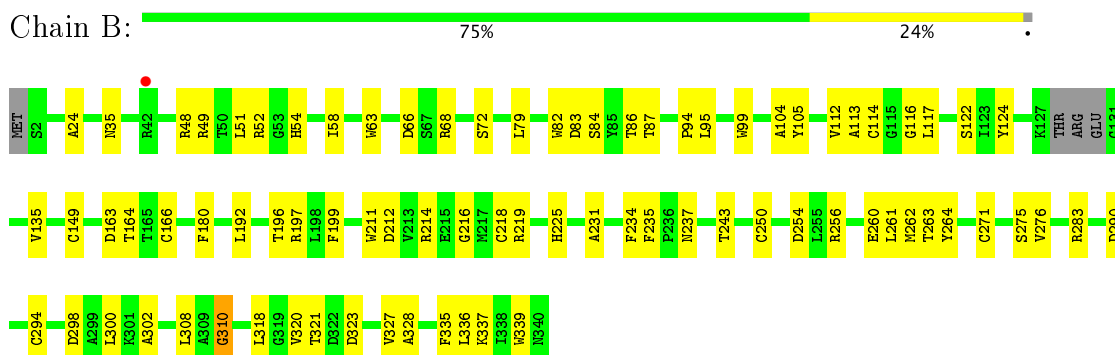
3 Residue-property plots [i](#)

These plots are drawn for all protein, RNA and DNA chains in the entry. The first graphic for a chain summarises the proportions of the various outlier classes displayed in the second graphic. The second graphic shows the sequence view annotated by issues in geometry and electron density. Residues are color-coded according to the number of geometric quality criteria for which they contain at least one outlier: green = 0, yellow = 1, orange = 2 and red = 3 or more. A red dot above a residue indicates a poor fit to the electron density ($RSRZ > 2$). Stretches of 2 or more consecutive residues without any outlier are shown as a green connector. Residues present in the sample, but not in the model, are shown in grey.

- Molecule 1: Beta-adrenergic receptor kinase 1



- Molecule 2: Guanine nucleotide-binding protein G(I)/G(S)/G(T) subunit beta-1



- Molecule 3: Guanine nucleotide-binding protein G(I)/G(S)/G(O) subunit gamma-2

Chain G:  66% 8% 26%



4 Data and refinement statistics

Property	Value	Source
Space group	C 2 2 21	Depositor
Cell constants a, b, c, α , β , γ	60.56Å 240.45Å 212.80Å 90.00° 90.00° 90.00°	Depositor
Resolution (Å)	48.32 – 2.74 53.20 – 2.74	Depositor EDS
% Data completeness (in resolution range)	95.7 (48.32-2.74) 95.7 (53.20-2.74)	Depositor EDS
R_{merge}	0.30	Depositor
R_{sym}	(Not available)	Depositor
$\langle I/\sigma(I) \rangle$ ¹	1.49 (at 2.73Å)	Xtrriage
Refinement program	PHENIX (1.10.1_2155: ???)	Depositor
R, R_{free}	0.244 , 0.292 0.245 , 0.293	Depositor DCC
R_{free} test set	1965 reflections (4.95%)	wwPDB-VP
Wilson B-factor (Å ²)	56.3	Xtrriage
Anisotropy	0.480	Xtrriage
Bulk solvent k_{sol} (e/Å ³), B_{sol} (Å ²)	0.30 , 23.3	EDS
L-test for twinning ²	$\langle L \rangle = 0.46$, $\langle L^2 \rangle = 0.29$	Xtrriage
Estimated twinning fraction	No twinning to report.	Xtrriage
F_o, F_c correlation	0.90	EDS
Total number of atoms	8159	wwPDB-VP
Average B, all atoms (Å ²)	68.0	wwPDB-VP

Xtrriage's analysis on translational NCS is as follows: *The largest off-origin peak in the Patterson function is 2.97% of the height of the origin peak. No significant pseudotranslation is detected.*

¹Intensities estimated from amplitudes.

²Theoretical values of $\langle |L| \rangle$, $\langle L^2 \rangle$ for acentric reflections are 0.5, 0.333 respectively for untwinned datasets, and 0.375, 0.2 for perfectly twinned datasets.

5 Model quality [i](#)

5.1 Standard geometry [i](#)

Bond lengths and bond angles in the following residue types are not validated in this section: EJS

The Z score for a bond length (or angle) is the number of standard deviations the observed value is removed from the expected value. A bond length (or angle) with $|Z| > 5$ is considered an outlier worth inspection. RMSZ is the root-mean-square of all Z scores of the bond lengths (or angles).

Mol	Chain	Bond lengths		Bond angles	
		RMSZ	# Z >5	RMSZ	# Z >5
1	A	0.24	0/5173	0.38	0/6948
2	B	0.24	0/2626	0.45	0/3558
3	G	0.23	0/444	0.36	0/599
All	All	0.24	0/8243	0.40	0/11105

There are no bond length outliers.

There are no bond angle outliers.

There are no chirality outliers.

There are no planarity outliers.

5.2 Too-close contacts [i](#)

In the following table, the Non-H and H(model) columns list the number of non-hydrogen atoms and hydrogen atoms in the chain respectively. The H(added) column lists the number of hydrogen atoms added and optimized by MolProbity. The Clashes column lists the number of clashes within the asymmetric unit, whereas Symm-Clashes lists symmetry related clashes.

Mol	Chain	Non-H	H(model)	H(added)	Clashes	Symm-Clashes
1	A	5060	0	5058	92	0
2	B	2580	0	2483	55	0
3	G	438	0	447	7	0
4	A	39	0	0	2	0
5	A	24	0	0	2	0
5	B	17	0	0	1	0
5	G	1	0	0	0	0
All	All	8159	0	7988	147	0

The all-atom clashscore is defined as the number of clashes found per 1000 atoms (including hydrogen atoms). The all-atom clashscore for this structure is 9.

All (147) close contacts within the same asymmetric unit are listed below, sorted by their clash magnitude.

Atom-1	Atom-2	Interatomic distance (Å)	Clash overlap (Å)
2:B:310:GLY:O	2:B:337:LYS:NZ	2.07	0.88
2:B:254:ASP:HB2	2:B:261:LEU:HD11	1.68	0.76
1:A:315:TYR:OH	1:A:334:SER:O	2.05	0.75
1:A:228:LYS:NZ	1:A:502:ASP:OD2	2.14	0.75
2:B:79:LEU:HD11	2:B:114:CYS:SG	2.29	0.73
2:B:212:ASP:OD2	2:B:219:ARG:NH2	2.22	0.73
1:A:386:ARG:NH2	1:A:416:SER:OG	2.23	0.71
1:A:360:GLU:OE2	1:A:371:SER:OG	2.06	0.68
2:B:86:THR:O	2:B:87:THR:OG1	2.11	0.68
1:A:88:GLU:OE1	1:A:104:ARG:NH2	2.27	0.67
1:A:200:GLY:HA3	4:A:701:EJS:C12	2.27	0.65
1:A:121:SER:O	1:A:123:PRO:HD3	1.96	0.65
2:B:163:ASP:O	2:B:164:THR:OG1	2.16	0.63
2:B:256:ARG:NH2	5:B:401:HOH:O	2.24	0.63
2:B:283:ARG:HG2	3:G:51:LEU:HD11	1.81	0.62
1:A:56:GLU:N	1:A:56:GLU:OE1	2.32	0.62
2:B:283:ARG:NH1	2:B:298:ASP:OD1	2.33	0.61
1:A:90:LYS:HD3	1:A:93:GLU:OE1	2.00	0.61
1:A:587:ARG:HD2	1:A:600:LEU:HD22	1.83	0.61
1:A:565:MET:HE1	1:A:632:LEU:HD13	1.83	0.61
2:B:271:CYS:HB2	2:B:290:ASP:HB3	1.85	0.59
2:B:294:CYS:HB3	2:B:308:LEU:HB2	1.84	0.59
2:B:320:VAL:HG22	2:B:327:VAL:HG12	1.82	0.59
1:A:498:LEU:O	1:A:499:LEU:HB2	2.02	0.58
2:B:52:ARG:HG2	2:B:335:PHE:CE1	2.39	0.58
1:A:605:GLU:HB3	1:A:624:ILE:HG23	1.86	0.57
1:A:40:ARG:HB2	1:A:172:THR:HG23	1.85	0.57
1:A:223:ASP:O	1:A:227:ILE:HG13	2.03	0.57
1:A:222:LEU:HD13	4:A:701:EJS:C21	2.33	0.57
1:A:298:ALA:O	1:A:302:ILE:HG13	2.05	0.56
2:B:192:LEU:HD23	2:B:199:PHE:HB3	1.88	0.56
1:A:87:GLU:HG2	1:A:91:LYS:HE3	1.89	0.55
1:A:454:ARG:NH1	5:A:802:HOH:O	2.38	0.55
1:A:360:GLU:OE2	1:A:436:ARG:NH2	2.40	0.54
1:A:95:LEU:HD11	1:A:104:ARG:HG3	1.90	0.54
1:A:609:VAL:HG22	1:A:622:LEU:HD22	1.90	0.54
1:A:177:TRP:O	1:A:180:VAL:HG22	2.08	0.54
2:B:262:MET:SD	2:B:302:ALA:HB2	2.48	0.53
1:A:245:LEU:O	1:A:311:ARG:HD3	2.09	0.53
1:A:149:TYR:O	1:A:153:ILE:HG13	2.08	0.53

Continued on next page...

Continued from previous page...

Atom-1	Atom-2	Interatomic distance (Å)	Clash overlap (Å)
1:A:194:HIS:HB2	1:A:207:GLY:O	2.08	0.53
1:A:557:LYS:HE2	2:B:94:PRO:HB2	1.91	0.53
2:B:211:TRP:CZ3	2:B:218:CYS:HB2	2.44	0.53
1:A:544:ASN:O	1:A:548:GLY:N	2.41	0.52
1:A:228:LYS:HD2	1:A:496:ILE:HD11	1.91	0.51
1:A:576:TRP:CZ3	1:A:633:GLN:HB2	2.45	0.51
2:B:275:SER:OG	2:B:318:LEU:HG	2.11	0.51
1:A:89:ILE:HG23	1:A:146:PHE:HB2	1.93	0.50
1:A:181:GLU:HB2	1:A:517:TRP:CZ3	2.47	0.50
1:A:377:LEU:O	1:A:381:LEU:HG	2.11	0.50
1:A:35:PRO:O	1:A:176:GLN:NE2	2.34	0.49
2:B:79:LEU:HG	2:B:95:LEU:HD21	1.92	0.49
2:B:99:TRP:CB	2:B:117:LEU:HB2	2.42	0.49
1:A:389:SER:OG	1:A:390:PRO:HD2	2.12	0.49
1:A:173:ARG:NH2	1:A:534:ASP:OD1	2.46	0.49
1:A:274:MET:SD	1:A:332:ARG:HD2	2.53	0.49
2:B:283:ARG:CG	3:G:51:LEU:HD11	2.42	0.49
1:A:222:LEU:HD12	1:A:269:PHE:CE1	2.48	0.48
1:A:394:HIS:NE2	1:A:396:THR:HB	2.29	0.48
2:B:63:TRP:CZ2	2:B:328:ALA:HB2	2.49	0.48
1:A:151:GLU:O	1:A:155:GLN:HG3	2.14	0.48
1:A:39:ILE:HG13	1:A:43:MET:HG2	1.97	0.47
1:A:88:GLU:HA	1:A:91:LYS:HD2	1.96	0.47
3:G:41:CYS:O	3:G:45:ALA:HB2	2.14	0.47
1:A:314:VAL:HG12	1:A:370:SER:HA	1.94	0.47
1:A:379:CYS:HA	1:A:390:PRO:HG3	1.96	0.47
2:B:124:TYR:CZ	2:B:135:VAL:HG22	2.50	0.47
1:A:44:GLN:O	1:A:48:GLU:HG3	2.13	0.47
2:B:283:ARG:CB	3:G:51:LEU:HD11	2.44	0.47
1:A:385:LEU:HD13	1:A:421:LEU:HD21	1.96	0.47
1:A:565:MET:HB2	1:A:581:PHE:CE1	2.49	0.47
1:A:315:TYR:O	1:A:316:ARG:HB2	2.15	0.47
1:A:535:ARG:O	1:A:539:ARG:HG3	2.15	0.47
2:B:99:TRP:O	2:B:116:GLY:HA3	2.15	0.47
2:B:321:THR:OG1	2:B:323:ASP:OD1	2.21	0.47
2:B:196:THR:O	2:B:196:THR:HG22	2.15	0.47
2:B:48:ARG:NH1	3:G:62:ARG:HG2	2.30	0.46
1:A:601:LEU:HD21	1:A:624:ILE:HD11	1.98	0.46
2:B:283:ARG:NH1	2:B:300:LEU:HB2	2.31	0.46
1:A:282:HIS:HB3	1:A:470:LEU:CD2	2.45	0.46
1:A:185:HIS:NE2	1:A:637:ASP:OD2	2.48	0.46

Continued on next page...

Continued from previous page...

Atom-1	Atom-2	Interatomic distance (Å)	Clash overlap (Å)
1:A:648:ARG:HA	1:A:651:TYR:CD2	2.51	0.46
1:A:297:TYR:O	1:A:301:ILE:HG13	2.16	0.46
2:B:197:ARG:HG2	2:B:214:ARG:HH12	1.81	0.46
1:A:66:LEU:HD22	1:A:69:ARG:HH21	1.81	0.46
2:B:260:GLU:OE2	2:B:263:THR:OG1	2.34	0.46
1:A:173:ARG:HH12	1:A:533:THR:HG21	1.81	0.46
1:A:260:ALA:O	1:A:510:PRO:HA	2.16	0.46
2:B:83:ASP:OD2	2:B:86:THR:OG1	2.30	0.46
1:A:131:HIS:ND1	1:A:148:PRO:HG2	2.32	0.45
2:B:66:ASP:OD2	2:B:68:ARG:HB3	2.15	0.45
1:A:222:LEU:HD12	1:A:269:PHE:HE1	1.81	0.45
2:B:49:ARG:HG3	2:B:84:SER:O	2.17	0.45
1:A:541:LYS:O	1:A:541:LYS:HD3	2.16	0.45
2:B:51:LEU:HB2	2:B:336:LEU:HB2	1.99	0.44
1:A:223:ASP:HA	1:A:266:LYS:HD3	1.99	0.44
1:A:135:HIS:HB3	1:A:140:GLN:O	2.18	0.44
2:B:104:ALA:HB2	2:B:149:CYS:O	2.17	0.44
1:A:411:VAL:O	1:A:413:LEU:HD12	2.18	0.44
1:A:654:ALA:O	1:A:658:VAL:HG23	2.18	0.44
2:B:113:ALA:HA	2:B:122:SER:O	2.18	0.44
1:A:361:VAL:HA	1:A:368:TYR:CE2	2.53	0.44
1:A:498:LEU:HD12	1:A:498:LEU:O	2.17	0.44
1:A:630:PHE:HE2	1:A:632:LEU:HD21	1.83	0.44
1:A:324:LEU:O	1:A:331:VAL:HA	2.18	0.44
1:A:543:LYS:O	1:A:546:GLN:HB3	2.18	0.43
2:B:231:ALA:HB1	2:B:276:VAL:HG22	1.99	0.43
2:B:235:PHE:HD2	2:B:237:ASN:OD1	2.01	0.43
2:B:72:SER:CB	2:B:336:LEU:HD11	2.47	0.43
1:A:239:GLU:HB2	1:A:337:GLY:HA2	2.00	0.43
1:A:442:ARG:HB2	1:A:446:GLU:HG3	2.01	0.43
2:B:52:ARG:HG2	2:B:335:PHE:CD1	2.53	0.43
1:A:282:HIS:HB3	1:A:470:LEU:HD23	2.01	0.43
1:A:254:ILE:HD11	1:A:304:GLY:O	2.18	0.43
1:A:262:HIS:HB3	1:A:267:LEU:HD23	2.01	0.43
2:B:124:TYR:CE2	2:B:135:VAL:HG22	2.53	0.43
1:A:625:ARG:HH12	1:A:666:ASN:ND2	2.17	0.42
2:B:99:TRP:HB3	2:B:117:LEU:HB2	2.00	0.42
2:B:51:LEU:HB3	2:B:82:TRP:CE3	2.54	0.42
1:A:540:LYS:O	1:A:544:ASN:N	2.50	0.42
2:B:166:CYS:HB2	2:B:180:PHE:HB2	2.01	0.42
1:A:85:PHE:O	1:A:89:ILE:HG13	2.18	0.42

Continued on next page...

Continued from previous page...

Atom-1	Atom-2	Interatomic distance (Å)	Clash overlap (Å)
1:A:294:MET:HG2	1:A:385:LEU:HD21	2.01	0.42
2:B:48:ARG:HB3	3:G:61:PHE:HB3	2.00	0.42
2:B:180:PHE:HB3	2:B:211:TRP:CE3	2.55	0.42
2:B:72:SER:HB3	2:B:336:LEU:HD11	2.01	0.42
1:A:201:GLY:N	5:A:806:HOH:O	2.53	0.42
2:B:308:LEU:HD22	2:B:339:TRP:CE3	2.55	0.42
1:A:204:GLU:N	1:A:204:GLU:OE1	2.52	0.41
1:A:279:LEU:HA	1:A:279:LEU:HD23	1.93	0.41
1:A:624:ILE:HG22	1:A:625:ARG:N	2.35	0.41
2:B:180:PHE:CE1	2:B:216:GLY:HA2	2.55	0.41
1:A:63:LEU:HD22	1:A:526:PHE:CD1	2.56	0.41
1:A:237:LEU:O	1:A:241:ILE:HG13	2.20	0.41
2:B:112:VAL:HG23	2:B:124:TYR:HB2	2.01	0.41
1:A:263:THR:HB	1:A:264:PRO:HD2	2.02	0.41
1:A:252:PRO:HA	1:A:332:ARG:NH2	2.35	0.41
1:A:420:GLU:HG2	1:A:421:LEU:N	2.36	0.41
1:A:255:VAL:HG21	1:A:324:LEU:HD12	2.03	0.41
2:B:24:ALA:O	3:G:29:LYS:NZ	2.44	0.40
2:B:250:CYS:HB2	2:B:264:TYR:HB2	2.03	0.40
1:A:165:PHE:O	1:A:168:SER:OG	2.29	0.40
1:A:186:LEU:HA	1:A:190:ASP:OD2	2.21	0.40
1:A:220:LYS:HE2	1:A:222:LEU:HD11	2.02	0.40
1:A:658:VAL:O	1:A:665:LYS:HB3	2.21	0.40
2:B:225:HIS:NE2	2:B:243:THR:OG1	2.50	0.40
2:B:54:HIS:CD2	2:B:58:ILE:HG12	2.56	0.40

There are no symmetry-related clashes.

5.3 Torsion angles [i](#)

5.3.1 Protein backbone [i](#)

In the following table, the Percentiles column shows the percent Ramachandran outliers of the chain as a percentile score with respect to all X-ray entries followed by that with respect to entries of similar resolution.

The Analysed column shows the number of residues for which the backbone conformation was analysed, and the total number of residues.

Mol	Chain	Analysed	Favoured	Allowed	Outliers	Percentiles
1	A	609/689 (88%)	581 (95%)	27 (4%)	1 (0%)	49 73

Continued on next page...

Continued from previous page...

Mol	Chain	Analysed	Favoured	Allowed	Outliers	Percentiles	
2	B	332/340 (98%)	316 (95%)	15 (4%)	1 (0%)	43	66
3	G	55/77 (71%)	54 (98%)	1 (2%)	0	100	100
All	All	996/1106 (90%)	951 (96%)	43 (4%)	2 (0%)	49	73

All (2) Ramachandran outliers are listed below:

Mol	Chain	Res	Type
1	A	500	ASP
2	B	310	GLY

5.3.2 Protein sidechains [i](#)

In the following table, the Percentiles column shows the percent sidechain outliers of the chain as a percentile score with respect to all X-ray entries followed by that with respect to entries of similar resolution.

The Analysed column shows the number of residues for which the sidechain conformation was analysed, and the total number of residues.

Mol	Chain	Analysed	Rotameric	Outliers	Percentiles	
1	A	553/608 (91%)	549 (99%)	4 (1%)	85	91
2	B	279/283 (99%)	276 (99%)	3 (1%)	76	86
3	G	46/64 (72%)	46 (100%)	0	100	100
All	All	878/955 (92%)	871 (99%)	7 (1%)	83	90

All (7) residues with a non-rotameric sidechain are listed below:

Mol	Chain	Res	Type
1	A	262	HIS
1	A	294	MET
1	A	407	LEU
1	A	651	TYR
2	B	35	ASN
2	B	105	TYR
2	B	234	PHE

Some sidechains can be flipped to improve hydrogen bonding and reduce clashes. All (1) such sidechains are listed below:

Mol	Chain	Res	Type
2	B	340	ASN

5.3.3 RNA [i](#)

There are no RNA molecules in this entry.

5.4 Non-standard residues in protein, DNA, RNA chains [i](#)

There are no non-standard protein/DNA/RNA residues in this entry.

5.5 Carbohydrates [i](#)

There are no carbohydrates in this entry.

5.6 Ligand geometry [i](#)

1 ligand is modelled in this entry.

In the following table, the Counts columns list the number of bonds (or angles) for which Mogul statistics could be retrieved, the number of bonds (or angles) that are observed in the model and the number of bonds (or angles) that are defined in the Chemical Component Dictionary. The Link column lists molecule types, if any, to which the group is linked. The Z score for a bond length (or angle) is the number of standard deviations the observed value is removed from the expected value. A bond length (or angle) with $|Z| > 2$ is considered an outlier worth inspection. RMSZ is the root-mean-square of all Z scores of the bond lengths (or angles).

Mol	Type	Chain	Res	Link	Bond lengths			Bond angles		
					Counts	RMSZ	# Z > 2	Counts	RMSZ	# Z > 2
4	EJS	A	701	-	36,43,43	2.61	12 (33%)	41,61,61	2.04	8 (19%)

In the following table, the Chirals column lists the number of chiral outliers, the number of chiral centers analysed, the number of these observed in the model and the number defined in the Chemical Component Dictionary. Similar counts are reported in the Torsion and Rings columns. '-' means no outliers of that kind were identified.

Mol	Type	Chain	Res	Link	Chirals	Torsions	Rings
4	EJS	A	701	-	-	0/20/40/40	0/5/5/5

All (12) bond length outliers are listed below:

Mol	Chain	Res	Type	Atoms	Z	Observed(Å)	Ideal(Å)
4	A	701	EJS	C03-C09	-4.82	1.50	1.56
4	A	701	EJS	C04-N06	-3.52	1.43	1.47
4	A	701	EJS	O01-C02	-2.25	1.18	1.23
4	A	701	EJS	O29-C07	-2.23	1.18	1.23
4	A	701	EJS	O24-C13	-2.16	1.18	1.23
4	A	701	EJS	C10-C09	2.21	1.54	1.51
4	A	701	EJS	C19-C18	2.30	1.53	1.50
4	A	701	EJS	C09-N08	4.77	1.50	1.46
4	A	701	EJS	C02-N30	5.19	1.45	1.35
4	A	701	EJS	C13-N14	5.62	1.46	1.33
4	A	701	EJS	C07-N06	6.31	1.48	1.34
4	A	701	EJS	C07-N08	6.81	1.49	1.34

All (8) bond angle outliers are listed below:

Mol	Chain	Res	Type	Atoms	Z	Observed(°)	Ideal(°)
4	A	701	EJS	C10-C09-C03	-4.15	106.73	111.81
4	A	701	EJS	C10-C09-N08	-3.15	105.63	110.85
4	A	701	EJS	C27-C25-C12	-2.55	120.18	123.11
4	A	701	EJS	C09-N08-C07	-2.41	117.72	123.72
4	A	701	EJS	C04-N06-C07	-2.14	120.16	123.78
4	A	701	EJS	C11-C12-C25	2.42	119.83	116.82
4	A	701	EJS	C05-C04-C03	2.89	119.93	113.13
4	A	701	EJS	C05-C04-N06	8.83	118.17	109.39

There are no chirality outliers.

There are no torsion outliers.

There are no ring outliers.

1 monomer is involved in 2 short contacts:

Mol	Chain	Res	Type	Clashes	Symm-Clashes
4	A	701	EJS	2	0

5.7 Other polymers [i](#)

There are no such residues in this entry.

5.8 Polymer linkage issues [i](#)

There are no chain breaks in this entry.

6 Fit of model and data

6.1 Protein, DNA and RNA chains

In the following table, the column labelled ‘#RSRZ> 2’ contains the number (and percentage) of RSRZ outliers, followed by percent RSRZ outliers for the chain as percentile scores relative to all X-ray entries and entries of similar resolution. The OWAB column contains the minimum, median, 95th percentile and maximum values of the occupancy-weighted average B-factor per residue. The column labelled ‘Q< 0.9’ lists the number of (and percentage) of residues with an average occupancy less than 0.9.

Mol	Chain	Analysed	<RSRZ>	#RSRZ>2	OWAB(Å ²)	Q<0.9
1	A	617/689 (89%)	0.36	23 (3%) 41 47	36, 71, 125, 161	0
2	B	336/340 (98%)	0.17	1 (0%) 93 96	39, 55, 79, 122	0
3	G	57/77 (74%)	0.08	0 100 100	49, 67, 97, 115	0
All	All	1010/1106 (91%)	0.28	24 (2%) 59 66	36, 62, 115, 161	0

All (24) RSRZ outliers are listed below:

Mol	Chain	Res	Type	RSRZ
1	A	402	ILE	6.9
1	A	118	LEU	3.4
1	A	359	PRO	3.3
1	A	572	PHE	3.1
1	A	410	ALA	2.8
1	A	474	ARG	2.7
1	A	161	VAL	2.6
1	A	82	LEU	2.6
1	A	429	LEU	2.5
1	A	394	HIS	2.5
1	A	547	LEU	2.5
1	A	133	GLN	2.5
1	A	395	LYS	2.5
1	A	354	HIS	2.4
1	A	73	LEU	2.4
2	B	42	ARG	2.4
1	A	146	PHE	2.4
1	A	536	LEU	2.3
1	A	535	ARG	2.3
1	A	196	ILE	2.3
1	A	473	PRO	2.2
1	A	318	LEU	2.1
1	A	195	ARG	2.1

Continued on next page...

Continued from previous page...

Mol	Chain	Res	Type	RSRZ
1	A	104	ARG	2.0

6.2 Non-standard residues in protein, DNA, RNA chains [i](#)

There are no non-standard protein/DNA/RNA residues in this entry.

6.3 Carbohydrates [i](#)

There are no carbohydrates in this entry.

6.4 Ligands [i](#)

In the following table, the Atoms column lists the number of modelled atoms in the group and the number defined in the chemical component dictionary. The B-factors column lists the minimum, median, 95th percentile and maximum values of B factors of atoms in the group. The column labelled 'Q< 0.9' lists the number of atoms with occupancy less than 0.9.

Mol	Type	Chain	Res	Atoms	RSCC	RSR	B-factors(Å ²)	Q<0.9
4	EJS	A	701	39/39	0.90	0.28	44,55,77,80	0

6.5 Other polymers [i](#)

There are no such residues in this entry.